

Research article

## CFEOM1, the classic familial form of congenital fibrosis of the extraocular muscles, is genetically heterogeneous but does not result from mutations in *ARIX*

Elizabeth C Engle\*<sup>1,2,3</sup>, Nathalie McIntosh<sup>1</sup>, Koki Yamada<sup>1,3</sup>, Bjorn A Lee<sup>1</sup>, Roger Johnson<sup>4</sup>, Michael O'Keefe<sup>5</sup>, Robert Letson<sup>6</sup>, Arnold London<sup>7</sup>, Evan Ballard<sup>8</sup>, Mark Ruttum<sup>9</sup>, Naomichi Matsumoto<sup>10</sup>, Nakamichi Saito<sup>11</sup>, Mary Louise Z Collins<sup>12</sup>, Lisa Morris<sup>13</sup>, Monte Del Monte<sup>13</sup>, Adriano Magli<sup>14</sup> and Teresa de Berardinis<sup>14</sup>

Address: <sup>1</sup>Division of Genetics, Childrens Hospital, Boston, MA, USA, <sup>2</sup>Department of Neurology, Children's Hospital, Boston, MA, USA, <sup>3</sup>Harvard Medical School, Boston, MA, USA, <sup>4</sup>Department of Ophthalmology, Children's Hospital and Regional Medical Center, Seattle, WA, USA, <sup>5</sup>Department of Ophthalmology, Children's Hospital, Dublin, Ireland, <sup>6</sup>Department of Ophthalmology, University of Minnesota, St. Paul, MN, USA, <sup>7</sup>Department of Ophthalmology, Aspen Medical Group, St. Paul, MN, USA, <sup>8</sup>Department of Ophthalmology, Associated Eye Care, St. Paul, MN, USA, <sup>9</sup>Department of Ophthalmology, Medical College of Wisconsin, Milwaukee, WI, USA, <sup>10</sup>Department of Human Genetics, Nagasaki University School of Medicine, Nagasaki, Japan, <sup>11</sup>Department of Ophthalmology, Saiseikai Fukuoka General Hospital, Fukuoka, Japan, <sup>12</sup>Department of Ophthalmology, Greater Baltimore Medical Center and the Johns Hopkins University, Baltimore, MD, USA, <sup>13</sup>Department of Ophthalmology, University of Michigan, Ann Arbor, MI, USA and <sup>14</sup>Dipartimento di Scienze Oftalmologiche, Università degli Studi di Napoli Dipartimento di Scienze Oftalmologiche, Naples, Italy

E-mail: Elizabeth C Engle\* - engle@enders.tch.harvard.edu; Nathalie McIntosh - mcintosh@brandeis.edu; Koki Yamada - kamada@enders.tch.harvard.edu; Bjorn A Lee - bjornl@mail.vet.upenn.edu; Roger Johnson - rhjohnson@aol.com; Michael O'Keefe - mokeefe@materprivate.ie; Robert Letson - letso001@tc.umn.edu; Arnold London - london005@tc.umn.edu; Evan Ballard - eaballard@associatedeyecare.com; Mark Ruttum - mruttum@mcw.edu; Naomichi Matsumoto - naomat@net.nagasaki-u.ac.jp; Nakamichi Saito - nksaito@med.kyushu-u.ac.jp; Mary Collins - mcollins@gbmc.org; Lisa Morris - lisamor@umich.edu; Monte Monte - madm@umich.edu; Adriano Magli - magli@cds.unina.it; Teresa de Berardinis - debera@libero.com

\*Corresponding author

Published: 6 March 2002

Received: 29 November 2001

BMC Genetics 2002, 3:3

Accepted: 6 March 2002

This article is available from: <http://www.biomedcentral.com/1471-2156/3/3>

© 2002 Engle et al; licensee BioMed Central Ltd. Verbatim copying and redistribution of this article are permitted in any medium for any purpose, provided this notice is preserved along with the article's original URL.

### Abstract

**Background:** To learn about the molecular etiology of strabismus, we are studying the genetic basis of 'congenital fibrosis of the extraocular muscles' (CFEOM). These syndromes are characterized by congenital restrictive ophthalmoplegia affecting muscles in the oculomotor and trochlear nerve distribution. Individuals with the classic form of CFEOM are born with bilateral ptosis and infraducted globes. When all affected members of a family have classic CFEOM, we classify the family as a CFEOM1 pedigree. We have previously determined that a CFEOM1 gene maps to the *FEOM1* locus on chromosome 12cen. We now identify additional pedigrees with CFEOM1 to determine if the disorder is genetically heterogeneous and, if so, if any affected members of CFEOM1 pedigrees or sporadic cases of classic CFEOM harbor mutations in *ARIX*, the CFEOM2 disease gene.

**Results:** Eleven new CFEOM1 pedigrees were identified. All demonstrated autosomal dominant inheritance, and nine were consistent with linkage to *FEOM1*. Two small CFEOM1 families were not linked to *FEOM1*, and both were consistent with linkage to *FEOM3*. We screened two CFEOM1 families consistent with linkage to *FEOM2* and 5 sporadic individuals with classic CFEOM and did not detect *ARIX* mutations.

**Conclusions:** The phenotype of two small CFEOM1 families does not map to *FEOM1*, establishing genetic heterogeneity for this disorder. These two families may harbor mutations in the *FEOM3* gene, as their phenotype is consistent with linkage to this locus. Thus far, we have not identified *ARIX* mutations in any affected members of CFEOM1 pedigrees or in any sporadic cases of classic CFEOM.

---

## Background

Congenital fibrosis of the extraocular muscles (CFEOM) and Duane syndrome (DS) are complex strabismus disorders that present with congenital restrictive ophthalmoplegia with or without ptosis. These disorders were traditionally believed to reflect primary structural extraocular muscle (EOM) anomalies and have been referred to as 'congenital fibrosis syndromes' [1]. Neuropathology studies of DS [2,3] and one form of CFEOM (CFEOM1) [4], and the identification of *ARIX* as the gene mutated in a second form of CFEOM (CFEOM2) [5], however, support our hypothesis that CFEOM results from maldevelopment of the oculomotor (nIII) and/or trochlear (nIV) nuclei and DS results from maldevelopment of the abducens (nVI) nucleus. The continued definition of these phenotypes and identification of the underlying disease genes will assist clinical diagnostics and lead to a better understanding of the unique developmental features of the oculomotor lower motor neuron unit.

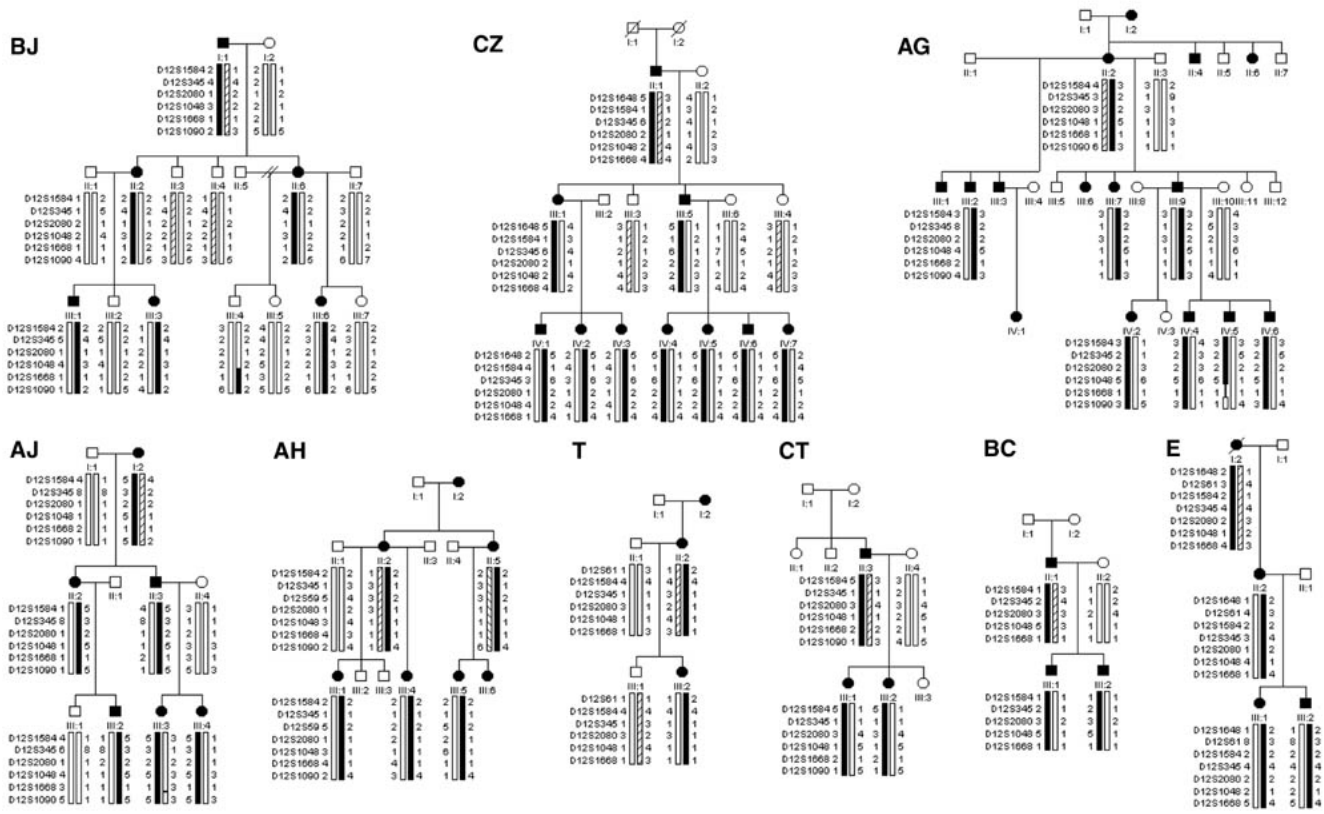
Although several distinct CFEOM phenotypes have been defined [6–8], each likely resulting from maldevelopment of a unique combination of alpha motor neurons in nIII and/or nIV, most reports of CFEOM families describe a stereotypical clinical phenotype. The affected members of these pedigrees are born with bilateral ptosis and restrictive ophthalmoplegia. The primary vertical position of each eye is downward and cannot be elevated above the midline. On forced duction testing there is resistance to passive movement of the globe. Although the primary position of both eyes is infraducted, there is variability in the secondary position of each eye (i.e. exotropic, esotropic, or neutral), and the degree of residual horizontal movement within the lower quadrants (full to completely restricted). This CFEOM phenotype was first described in the medical literature in 1840 [9] and was recognized to occur as a familial trait in 1879 [10]. Subsequently, families segregating this phenotype have been published under myriad names [1,4,6,11–21]. We now refer to individuals with this phenotype as having "classic CFEOM" and to families in which all affected members have this phenotype as "CFEOM1 pedigrees". We previously mapped a CFEOM1 locus, referred to as *FEOM1*, to a  $\leq 3$  cM region spanning the centromere of chromosome 12, flanked by *D12S1584* (*AFM136xf6*) on the p-arm and *D12S1668* (*AFMb320wd9*) on the q-arm [6,15].

In addition to families with CFEOM1, we have identified several less common familial CFEOM phenotypes (CFEOM2 and CFEOM3). These phenotypes are classified as CFEOM based on the presence of affected members with congenital restrictive ophthalmoplegia affecting extraocular muscles in the nIII/nIV distribution. By definition, however, one or more affected family members do not have the classic CFEOM phenotype. In families with CFEOM2, the eyes of affected family members are fixed in an exotropic, or outward, position. Thus far, this phenotype segregates as an autosomal recessive trait and maps to the *FEOM2* locus on chromosome 11q13 [8], and affected individuals carry homozygous mutations in *ARIX*[5]. *ARIX* encodes a homeodomain transcription factor required for nIII and nIV development in mice and zebrafish [22,23]. In families with CFEOM3, the CFEOM phenotype is variably expressed. Some affected members have classic CFEOM. Others, however, are unilaterally affected, the primary position of the eye is orthotropic rather than infraducted, and/or the eye can be raised into the upper quadrants. Thus far, this phenotype segregates as an autosomal dominant trait and maps to either *FEOM3* on 16qter [7] or to *FEOM1*[24].

In our attempt to understand phenotype-genotype correlations between specific CFEOM phenotypes and *FEOM* loci, we noted that the CFEOM1 phenotype in all pedigrees reported to date maps to the *FEOM1* locus. To determine if CFEOM1 is indeed genetically homogeneous, we identified all unpublished CFEOM1 pedigrees in our database, analyzed them for linkage to the *FEOM* loci, and found that most but not all were consistent with linkage to *FEOM1*. The two small pedigrees not linked to *FEOM1* were consistent with linkage to *FEOM3*. In addition, to further define the spectrum of human *ARIX* mutations, we identified all CFEOM1 families consistent with linkage to *FEOM2* or sporadic individuals with classic CFEOM and determined that none harbored mutations in the *ARIX* gene.

## Results

From our database, 33 pedigrees were of sufficient size and had sufficient clinical data and 14 sporadic individuals had sufficient clinical data to qualify for the study. Of these, 20 pedigrees met CFEOM1 and 5 sporadic individuals met classic CFEOM inclusion criteria. Although not an inclusion criterion for the study, the CFEOM1 pheno-



**Figure 1**

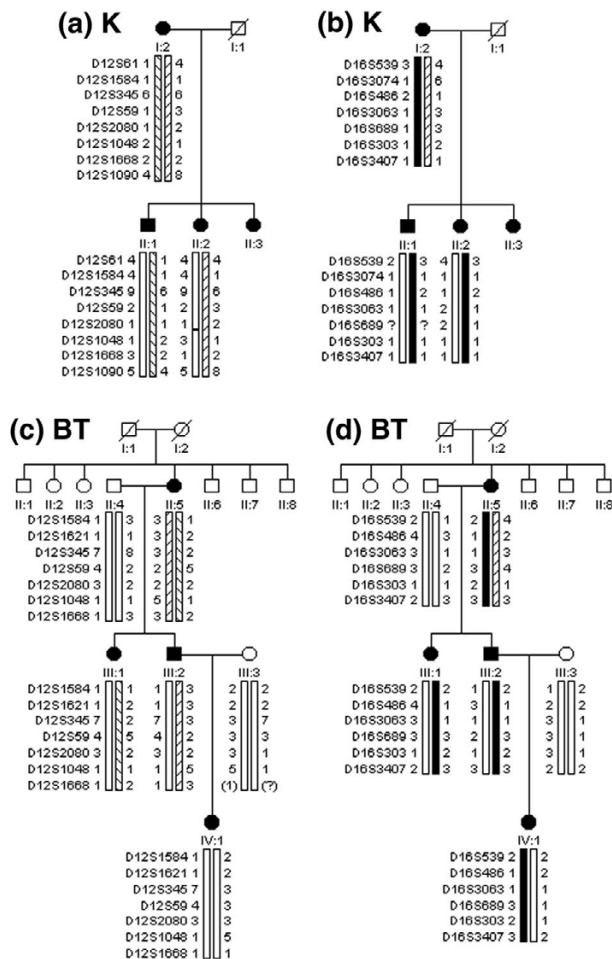
Haplotype analysis of pedigrees BJ, CZ, AG, AJ, AH, T, CT, BC, and E at the *FEOM1* locus. Black symbols denote those individuals who are clinically affected with classic CFEOM. Genotyping data and schematic segregating haplotype bars for chromosome 12cen markers are shown below the symbol for each study participant. Allele sizes here and in figure 2 were assigned as linkage studies were performed are not equivalent when compared between families. Black bars denote the potential disease-associated region. Diagonally hatched or white bars highlight the inheritance of the non-disease-associated haplotypes. References to specific individuals within the text refer to the generation number (Roman numeral) and position within generation (Arabic numeral). In all 9 pedigrees each family's disease-associated haplotype is inherited by all CFEOM1 individuals and by no asymptomatic individuals.

type in all 20 families was inherited as an autosomal dominant trait with full penetrance. The phenotype in 9 of the 20 pedigrees was previously demonstrated to map to the *FEOM1* locus [6,15,25,26] (Table 1). Therefore, the remaining 11 families were included in this study (Figs. 1 & 2, Table 1, and see additional files 1–3 [Additional File 1, Additional File 2, Additional File 3].

The 11 families are ethnically diverse, not consanguineous and, to the best of our knowledge, unrelated. Eight of the families reside in the US and are of mixed European ancestry (BJ, AG, AJ, AH, CT, E, K, BT), while families CZ, T, and BC are of Italian, Irish, and Japanese ancestry, respectively. Family history of CFEOM in several previous generations was documented in two pedigrees (AG, T), and a previous family history was recounted but could not

be corroborated in five others (BJ, AJ, AH, E, K). In contrast, in pedigrees CZ, BC, CT and BT, neither the parents nor more distant relatives of the eldest affected family member were reportedly affected. Examination of individuals I-1 and I-2 of pedigrees BC and CT confirmed their unaffected status. Individuals I-1 and I-2 in pedigrees CZ and BT were deceased. These data suggest that the *CFEOM1* mutation rate is not negligible. Cytogenetic analyses, when performed, did not reveal abnormalities (Table 1).

Nine of the 11 *CFEOM1* pedigrees contain too few participants to establish linkage to a specific locus. Haplotype analysis of these families using multiple markers that span the critical region of a given locus can, however, eliminate linkage to the locus, determine genetic heterogeneity, and



**Figure 2**  
Haplotype analysis for pedigrees K at the (a) *FEOM1* and (b) *FEOM3* loci and BT at the (c) *FEOM1* and (d) *FEOM3* loci. Symbols are defined in the legend to figure 1. In each family the CFEOM1 phenotype is co-inherited with *FEOM3* markers and not with *FEOM1* markers.

guide future mutation analyses. If the phenotype results from a mutation at a given locus, haplotype analysis at that locus will be consistent with linkage. If the phenotype does not result from a mutation at a given locus, however, haplotype data from a small family may be consistent or inconsistent with linkage. Thus, haplotype data in a small family that is consistent with linkage can result either from a disease mutation at that locus or by chance. Haplotype data in a small family that is inconsistent with linkage strongly suggests that the family's phenotype is not linked to the locus.

**Linkage to *FEOM1***

Genetic analyses of the two largest families (BJ, CZ) established linkage of their phenotype to the *FEOM1* locus

(Fig. 1, Table 1 & see Additional File 1). Maximum lod scores of 3.01 were obtained at a theta value of zero for the fully informative markers *D12S59* and *D12S1048* in family BJ, and the fully informative markers *D12S1648*, *D12S345*, and *D12S59* in family CZ.

Linkage to *FEOM1* was ruled out in family BT (see Additional file 1). A lod score of -2 was obtained at a theta value of 0.04 for the fully informative markers *D12S1621*, *D12S59* and *D12S1668*. The *FEOM1* critical region is  $\leq 3$  cM, and a theta of 0.04 corresponds to a genetic distance of approximately 4 cM, thus eliminating linkage of this family's CFEOM disease gene to the entire *FEOM1* critical region. Exclusion of linkage to the *FEOM1* locus is further supported by haplotype analysis of this family (Fig. 2c). The affected sister and brother inherit different *FEOM1* haplotypes from their affected mother, and the brother's affected daughter inherits her unaffected paternal grandfather's *FEOM1* haplotype, thus proving non-association between the *FEOM1* haplotype and the disease phenotype.

The eight remaining CFEOM pedigrees were too small to produce statistically significant lod scores; however, seven of the eight families displayed haplotype and linkage data consistent with linkage to the *FEOM1* locus (Fig. 1, see Additional File 1). Genetic and haplotype analysis of all nine families consistent with linkage to the *FEOM1* locus did not reveal any recombination events within the previously defined *FEOM1* critical region.

The smallest family, K, revealed haplotype and linkage data that was inconsistent with linkage to the *FEOM1* locus (Fig. 2a, see Additional File 1). A lod score of -2 was obtained at a theta value of 0.002 for the only two informative markers, *D12S59* and *D12S1090*. These theta values eliminate linkage to only 0.8 cM of the  $< 3$  cM *FEOM1* critical region and, therefore, this locus cannot be formally ruled out. Nevertheless, the minimum number of recombination events in this family occurs only if the affected son and daughter inherit different *FEOM1* haplotypes from their affected mother, thus strongly suggesting that the disease gene in this family does not map to the chromosome 12 locus.

Genetic heterogeneity was tested taking into account the eleven new families. Admixture analysis of the two-point data with the HOMOG program showed evidence for linkage to *FEOM1* with heterogeneity for both markers tested (*D12S345* and *D12S1048*). Chi-squares of 34.601 and 40.377 were obtained for *D12S345* and *D12S1048* respectively which resulted in significant likelihood ratios of  $3.26 \times 10^7$  and  $5.86 \times 10^8$ . Alpha (the proportion of linked families) was 0.90.

**Table 1: Summary of the genetic analysis of CFEOM1 pedigrees**

Pedigree	CFEOM Phenotype	Inheritance	Forced Ductions	Cytogenetic analysis	FEOM1	FEOM3	FEOM2	ARIX mutations	Publication
A	CFEOM1	AD	+	normal	<b>LINKED</b>				refs. [6,15]
B	CFEOM1	AD	+	normal	<b>LINKED</b>				refs. [6,15]
C	CFEOM1	AD	+	not done	<b>LINKED</b>				ref. [15]
H	CFEOM1	AD	+	normal	<b>LINKED</b>				ref. [15]
AA	CFEOM1	AD	+	normal	<b>LINKED</b>				ref. [15]
AC	CFEOM1	AD	+	normal	<b>LINKED</b>				ref. [15]
AD	CFEOM1	AD	+	normal	<b>LINKED</b>				ref. [15]
CD	CFEOM1	AD	+	not done	<b>LINKED</b>				ref. [25]
CB	CFEOM1	AD	not done	not done	c/w linkage	nc/w linkage	NOT LINKED		ref. [26]
BJ	CFEOM1	AD	+	normal	<b>LINKED</b>				current
CZ	CFEOM1	AD	+	normal	<b>LINKED</b>				current
AG	CFEOM1	AD	+	normal	c/w linkage	NOT LINKED	NOT LINKED		current
AJ	CFEOM1	AD	+	not done	c/w linkage	nc/w linkage	nc/w linkage		current
AH	CFEOM1	AD	+	normal	c/w linkage	nc/w linkage	nc/w linkage	current	
T	CFEOM1	AD	+	not done	c/w linkage	nc/w linkage	nc/w linkage		current
CT	CFEOM1	AD	+	normal	c/w linkage	nc/w linkage	nc/w linkage	current	
BC	CFEOM1	AD	+	not done	c/w linkage	nc/w linkage	(c/w linkage)	none	current
E	CFEOM1	AD	+	normal	c/w linkage	c/w linkage	NOT LINKED		current
K	CFEOM1	AD	+	normal	nc/w linkage	c/w linkage	(c/w linkage)	none	current
BT	CFEOM1	AD	+	normal	NOT LINKED	c/w linkage	nc/w linkage		current

AD = autosomal dominant; + = positive forced duction testing for restriction; c/w linkage = consistent with linkage; nc/w linkage = not consistent with linkage.

### Linkage to FEOM3

All families except BJ and CZ were analyzed for linkage to the 5.6 cM *FEOM3* locus flanked by *D16S486* and 16qter. Of the seven small families consistent with linkage to *FEOM1*, only the largest (AG) can be definitively excluded from linkage to *FEOM3* (see Additional File 2). Five of the remaining families (AJ, AH, T, BC, CT) showed haplotype data inconsistent with linkage to *FEOM3*, but the theta values obtained at lod scores of -2 were insufficient to rule out the entire *FEOM3* critical region.

The two families whose phenotype did not map to *FEOM1* (K, BT) had haplotype and linkage data consistent with linkage to *FEOM3* (Fig. 2b & 2d, see Additional File 2). In addition, one of the small families consistent with linkage to the *FEOM1* locus (E) had haplotype and linkage data that was also consistent with linkage to the *FEOM3* locus (see Additional File 2).

### Linkage to FEOM2

All families whose phenotype was not linked to *FEOM1* or *FEOM3* were tested for linkage to *FEOM2*. Assuming autosomal dominant inheritance with complete penetrance, two families (AG, E) are not linked and five families are inconsistent with linkage (AJ, AH, T, CT, BT) to the *FEOM2* locus (see Additional File 3). Family BC is consistent with linkage to both the *FEOM2* and *FEOM1* loci (maximum lod score 0.3 at both loci), and family K is consistent with linkage to both the *FEOM2* and *FEOM3* loci (maximum lod score 0.3 at both loci).

### ARIX mutation analysis

Genomic DNA samples from affected member of pedigree BC and K and 5 sporadic individuals with classic CFEOM were used as templates to sequence the three *ARIX* exons and flanking introns. No mutations were identified.

### Discussion

We have established clinical criteria for classic CFEOM and CFEOM1, and have identified 5 sporadic individuals with classic CFEOM and 20 pedigrees with CFEOM1. Of these 20 pedigrees, 18 are linked, or consistent with linkage, to the *FEOM1* locus. Two small CFEOM1 pedigrees are not consistent with linkage, however, establishing that CFEOM1 is genetically heterogeneous.

Eleven of the 20 pedigrees are large enough to establish linkage to a specific locus; we previously reported that the CFEOM1 phenotype in 9 of these pedigrees maps to the *FEOM1* locus [6,15,25,26] and we now demonstrate that the remaining two also map to *FEOM1*. Our analysis of the remaining 9 CFEOM1 pedigrees demonstrates that 6 most likely result from mutations in the *FEOM1* gene. Five of these 6 are consistent with linkage to *FEOM1* and are either not linked or not consistent with linkage to *FEOM2* and *FEOM3*. One is consistent with linkage to *FEOM1* and not *FEOM3* and, although consistent with linkage to *FEOM2*, *ARIX* mutations were not identified. Therefore, although not proved, the CFEOM1 phenotype in these 6 families seems likely to result from mutations in the *FEOM1* gene. The phenotype of a seventh family, E, is

consistent with linkage to both *FEOM1* and *FEOM3* and will be screened for mutations at both these loci.

In contrast to the 18 pedigrees whose CFEOM1 phenotype is consistent with linkage to *FEOM1*, pedigree BT is not linked to *FEOM1* and pedigree K is inconsistent with linkage to this locus. It is notable that haplotype analysis of both these small CFEOM1 families demonstrates co-inheritance with the *FEOM3* locus. In the reported family whose autosomal dominant CFEOM3 phenotype maps to the *FEOM3* locus, 9 of the 17 affected members had classic CFEOM. Our current data now suggests that, at least in small pedigrees, CFEOM1 can also map to the *FEOM3* locus. It will require the identification of additional large CFEOM1 families to determine if they too can map to this locus.

*ARIX*, which encodes a transcription factor critical to nIII and nIV development in mice and zebrafish [22,23], was recently identified as the *FEOM2* gene mutated in affected members of CFEOM2 families [5]. It was unknown, however, if classic CFEOM may also result from mutations in this gene. We now find that we are unable to identify *ARIX* mutations underlying classic CFEOM in either sporadic cases or in individuals from CFEOM1 families.

This finding is consistent with our prediction that, compared to *ARIX*, the genes mutated in CFEOM1 may have a more restricted function in the development of nIII and that their expression may actually be regulated by *ARIX*. This prediction is based on the CFEOM1 phenotype and on the neuropathological study of an affected member of a CFEOM1 pedigree whose disease gene maps to the *FEOM1* locus. This study revealed absence of the superior division of the oculomotor nerve and the corresponding central caudal and medial nIII subnuclei, and marked abnormalities of the levator palpebrae superioris and superior rectus muscles [4]. These findings suggest that while *ARIX* is necessary for both nIII and nIV development, the CFEOM1 genes may be necessary for the development of only these two specific nIII subnuclei.

## Conclusions

The genetic analysis of the 11 CFEOM1 pedigrees in this report demonstrates that this disorder is genetically heterogeneous. While the phenotype of all large CFEOM1 pedigrees analyzed thus far map to the *FEOM1* locus, smaller CFEOM1 pedigrees may harbor mutations in the *FEOM3* gene. The CFEOM1 phenotype does not, however, appear to result from mutations in *ARIX*. The CFEOM1 families identified in this study contribute critical alleles toward the identification of the mutated *FEOM1* and *FEOM3* genes. Once identified, we anticipate that the study of the function of these genes will contribute to our understanding of midbrain motor neuron development.

## Materials and Methods

### Subjects

We established inclusion criteria for this study as follows. First, we established criteria for a "classic CFEOM individual" as an individual with congenital nonprogressive bilateral ophthalmoplegia and ptosis, an infraducted primary position of each eye with the inability to raise either eye above the midline, and forced duction testing positive for restriction, if testing was performed. We then established criteria for a "CFEOM1 pedigree" as a family in which every affected member met the criteria for "classic CFEOM". Second, we reviewed all participants enrolled in our ongoing CFEOM study and determined which individuals and which pedigrees met these two criteria. For a pedigree to be considered, we required clinical examination records and/or photographs/videos of the primary positions of gaze for all affected study participants. Third, from these CFEOM1 pedigrees we identified those with a family structure sufficient for linkage analysis. Pedigrees were required to have affected study participants in three or more generations, or affected study participants in two generations with at least two participating offspring of affected individuals, or two or more affected study participants within one generation. In this way we did not assume a mode of inheritance. Lastly, sporadic individuals with classic CFEOM were screened for *ARIX* mutations. The study was approved by the Children's Hospital institutional review board, and all study participants signed informed consent forms. Our methods adhered to the Declaration of Helsinki for research involving human subjects.

### Molecular studies

Blood samples were obtained from all participating family members, and lymphocyte DNA was extracted using the Puregene kit (Gentra, Research Triangle Park, NC). Chromosome analyses of GTG banded metaphase cells at a 400 band level minimum resolution were performed on one or more affected family members of each family whenever possible to rule out cytogenetic abnormalities. All families were analyzed for linkage to the *FEOM1* locus. Families not linked to the *FEOM1* locus were also analyzed for linkage to the *FEOM2* and *FEOM3* loci. Linkage studies were conducted using three or more locus specific polymorphic DNA micro satellite markers for each family. The *FEOM1* markers included *D12S1648*, *D12S61*, *D12S1584*, *D12S1621*, *D12S345*, *D12S59*, *D12S2080*, *D12S1048*, *D12S1668*, and *D12S1090*[6,15]. The *FEOM2* markers included *D11S1337*, *D11S4162*, *D11S4196*, *D11S1314*, and *D11S1369*[8]. The *FEOM3* markers included *D16S539*, *D16S3077*, *D16S498*, *D16S486*, *D16S476*, *D16S3063*, *D16S689*, *D16S2621*, *D16S303*, and *D16S3407*[7]. The primer sequences for these polymorphisms are available from the Genome Database [<http://gdbwww.gdb.org>]. Unlabeled primers were

purchased from Genosys Biotechnologies, Inc. [http://www.genosys.com]. Fluorescently labeled primers were purchased from Research Genetics, Inc. [http://www.researchgenetics.com]. Radioactive products were made by 30 cycles of PCR amplification of 10- $\mu$ l reaction volumes containing 10–30 ng of genomic DNA, 40 ng of each primer, 200  $\mu$ M each of dATP, dTTP, dGTP, and dCTP, 1  $\mu$ Ci  $\alpha$ -<sup>32</sup>P-dCTP (3,000 Ci mmol<sup>-1</sup>) and 0.5 U Taq polymerase (Perkin Elmer). The radioactively labeled PCR products were separated on 6% denaturing polyacrylamide sequencing gels, and the alleles were visualized by autoradiography [6]. For the fluorescently labeled products,  $\alpha$ -<sup>32</sup>P-dCTP was omitted, fluorescent primers were used, and the products were analyzed in an ABI Prism™ 377 DNA Sequencer (Perkin Elmer) following the manufacturer's specifications.

#### Lod score calculations

An individual was scored as affected based on clinical examination records and/or photographs of primary position of gaze. Lod scores were calculated using the Fastlink version 3.0 package of programs [27], assuming autosomal dominant inheritance with complete penetrance, and a disease incidence of 1 in 1,000,000 births, as described previously [7,8]. Because of the absence of specific allele frequencies for each of the ethnic groups represented in the study, we assumed ten marker alleles of equal frequency. To assess nonallelic heterogeneity linkage data from two FEOM1 markers spanning the FEOM1 critical region (D12S345 and D12S1048) were analyzed using a HOMOG version 3.35 program [28].

#### ARIX mutation detection

ARIX was PCR amplified from genomic DNA using five primer sets and sequenced on an automated ABI 377 DNA sequencer (PE-Applied Biosystems) as described previously [5].

#### Additional material

##### Additional file 1

Table 2: Two-point linkage data between CFEOM1 and the FEOM1 locus

Click here for file

[http://www.biomedcentral.com/content/supplementary/1471-2156-3-3-S1.pdf]

##### Additional file 2

Table 3: Two-point linkage data between CFEOM1 and the FEOM3 locus

Click here for file

[http://www.biomedcentral.com/content/supplementary/1471-2156-3-3-S2.pdf]

##### Additional file 3

Table 4: Two-point linkage data between CFEOM1 and the FEOM2 locus

Click here for file

[http://www.biomedcentral.com/content/supplementary/1471-2156-3-3-S3.pdf]

#### Acknowledgements

This work was supported by National Eye Institute EY12498 and EY13583 and by the Children's Hospital Mental Retardation Research Center (P30 HD18655).

#### References

1. Brown HW: **Congenital structural muscle anomalies.** In: *Strabismus Ophthalmic Symposium*. 1950:205-236
2. Hotchkiss MG, Miller NR, Clark AW, Green WG: **Bilateral Duane's retraction syndrome: A clinical-pathological case report.** *Arch Ophthalmol* 1980, **98**:870-874
3. Miller NR, Kiel SM, Green WR, Clark AW: **Unilateral Duane's retraction syndrome (type 1).** *Arch Ophthalmol* 1982, **100**:1468-1472
4. Engle EC, Goumernov B, McKeown CA, Schatz M, Johns DR, Porter JD, Beggs AH: **Oculomotor nerve and muscle abnormalities in congenital fibrosis of the extraocular muscles.** *Annals of Neurology* 1997, **41**:314-325
5. Nakano M, Yamada K, Fain J, Sener EC, Selleck CJ, Awad AH, Zwaan J, Mullaney PB, Bosley TM, Engle EC: **Homozygous mutations in ARIX(PHOX2A) result in congenital fibrosis of the extraocular muscles type 2.** *Nat Genet* 2001, **29**:315-320
6. Engle EC, Kunkel LM, Specht LA, Beggs AH: **Mapping a gene for congenital fibrosis of the extraocular muscles to the centromeric region of chromosome 12.** *Nature Genetics* 1994, **7**:69-73
7. Doherty E, Macy M, Wang S, Dykeman C, Melanson M, Engle E: **CFEOM3: a new extraocular congenital fibrosis syndrome that maps to 16q24.2-q24.3.** *Investigative Ophthalmology and Visual Science* 1999, **40**:1687-1694
8. Wang S, Zwaan J, Mullaney P, Jabak M, Al-Awad A, Beggs A, Engle E: **Congenital fibrosis of the extraocular muscles type 2 (CFEOM2), an inherited exotropic strabismus fixus, maps to distal 11q13.** *American Journal of Human Genetics* 1998, **63**:517-525
9. Baumgarten M: **Erfahrungen über den strabismus und die Muskeldurchschneidung am Auge in physiologisch-pathologischer und therapeutischer Beziehung.** *Monatsschr Med Augenheilkd Chir* 1840, **3**:474-499
10. Heuck G: **Ueber angeborenen vererbten Beweglichkeits - Defect der Augen.** *Klin Monatsbl Augenheilkd* 1879, **17**:253-278
11. Black G, Perveen R, Hatchwell E, Reck A, Clayton-Smith J: **Locus heterogeneity in autosomal dominant congenital external ophthalmoplegia.** *Journal of Medical Genetics* 1998, **35**:985-988
12. Bradburn AA: **Hereditary ophthalmoplegia in five generations.** *Trans Ophthalmol Soc* 1912, **32**:142-153
13. Catford GV: **A familial musculo-fascial anomaly.** *Trans Ophthalmol Soc UK* 1966, **86**:19-36
14. Cibis GV: **Congenital familial external ophthalmoplegia with co-contraction.** *Ophthalmic Paediatrics and Genetics* 1984, **4**:163-168
15. Engle EC, Marondel I, Houtman WA, de Vries B, Lowenstein A, Lazar M, Ward DC, Kucherlapati R, Beggs AH: **Congenital fibrosis of the extraocular muscles (autosomal dominant congenital external ophthalmoplegia): genetic homogeneity, linkage refinement, and physical mapping on chromosome 12.** *American Journal of Human Genetics* 1995, **57**:1086-1094
16. Harley RD, Rodrigues MM, Crawford JS: **Congenital fibrosis of the extraocular muscles.** *Journal of Pediatric Ophthalmology and Strabismus* 1978, **15**:346-358
17. Houtman WA, vanWeerden TW, Robinson PH, deVries B, Hoogenraad TU: **Hereditary congenital external ophthalmoplegia.** *Ophthalmologica* 1986, **193**:207-218
18. Laughlin RC: **Congenital fibrosis of the extraocular muscles; a report of six cases.** *Am J Ophthalmology* 1956, **41**:432-438
19. Lees F: **Congenital static familial ophthalmoplegia.** *J Neurol Neurosurg Psychiatry* 1960, **23**:46-51
20. McKusick VA: **Mendelian inheritance in man: catalogs of autosomal dominant, autosomal recessive, and X-linked phenotypes,** 1990
21. Traboulsi E, Jaafar M, Kattan H, Parks M: **Congenital fibrosis of the extraocular muscles: Report of 24 cases illustrating the clinical spectrum and surgical management.** *American Orthoptic Journal* 1993, **43**:45-53
22. Guo S, Brush J, Teraoka H, Goddard A, Wilson SW, Mullins MC, Rosenthal A: **Development of noradrenergic neurons in the**

- zebrafish hindbrain requires BMP, FGF8, and the homeodomain protein soulless/Phox2a.** *Neuron* 1999, **24**:555-566
23. Pattyn A, Morin X, Cremer H, Goridis C, Brunet JF: **Expression and interactions of the two closely related homeobox genes Phox2a and Phox2b during neurogenesis.** *Development* 1997, **124**:4065-4075
  24. Sener EC, Lee BA, Turgut B, Akarsu AN, Engle EC: **New clinical variation of a fibrosis syndrome in a Turkish family maps to the CFEOM1 locus on chromosome 12.** *Arch Ophthalmol* 2000, **118**:1090-1097
  25. Flaherty MP, Grattan-Smith P, Steinberg A, Jamieson R, Engle EC: **Congenital fibrosis of the extraocular muscles associated with cortical dysplasia and maldevelopment of the basal ganglia.** *Ophthalmology* 2001, **108**:1313-1322
  26. Hart B, Carlow T, Engle E: **Congenital fibrosis of the extraocular muscles type 1: MRI and clinical findings.** In: *Proceedings of the American Society of Neuroradiology, 38th Annual Meeting; Atlanta.* 2000:317
  27. Cottingham RW Jr, Idury RM, Schäffer AA: **Faster Sequential Genetic Linkage Computations.** *American Journal of Human Genetics* 1993, **53**:252-263
  28. Ott J: *Analysis of Human Genetic Linkage, Rev. ed. edn.* 1991

Publish with **BioMed Central** and every scientist can read your work free of charge

"BioMedcentral will be the most significant development for disseminating the results of biomedical research in our lifetime."

Paul Nurse, Director-General, Imperial Cancer Research Fund

Publish with **BMC** and your research papers will be:

- available free of charge to the entire biomedical community
- peer reviewed and published immediately upon acceptance
- cited in PubMed and archived on PubMed Central
- yours - you keep the copyright

Submit your manuscript here:

<http://www.biomedcentral.com/manuscript/>



[editorial@biomedcentral.com](mailto:editorial@biomedcentral.com)