

# Safety of endoscopic pancreatic necrosectomy compared with percutaneous and surgical necrosectomy: a nationwide inpatient study



## Authors

Daryl Ramai<sup>1</sup>, Dan M. McEntire<sup>1</sup>, Kameron Tavakolian<sup>2</sup>, Joseph Heaton<sup>2</sup>, Saurabh Chandan<sup>3</sup>, Banreet Dhindsa<sup>4</sup>, Amaninder Dhaliwal<sup>5</sup>, Marcello Maida<sup>6</sup>, Andrea Anderloni<sup>7</sup>, Antonio Facciorusso<sup>8</sup>, Douglas G. Adler<sup>9</sup>

## Institutions

- 1 Gastroenterology & Hepatology, University of Utah Health, Salt Lake City, Utah, United States
- 2 Department of Medicine, Jersey Shore University Medical Center, Neptune City, New Jersey, United States
- 3 Division of Gastroenterology & Hepatology, CHI Health Creighton University Medical Center, Omaha, Nebraska, United States
- 4 Gastroenterology & Hepatology, University of Nebraska Medical Center, Omaha, Nebraska, United States
- 5 Gastroenterology, McLeod Health Center, Florence, South Carolina, United States
- 6 Gastroenterology and Endoscopy Unit, S. Elia-Raimondi Hospital, Caltanissetta, Italy
- 7 Digestive Endoscopy Unit, Humanitas Clinical, and Research Center - IRCCS, Milano, Italy
- 8 Section of Gastroenterology, Department of Medical Sciences, University of Foggia, Foggia, Italy
- 9 Center for Advanced Therapeutic Endoscopy (CATE), Porter Adventist Hospital/PEAK Gastroenterology, Denver, Colorado, United States

submitted 11.10.2022

accepted after revision 6.12.2022

published online 07.12.2022

## Bibliography

Endosc Int Open 2023; 11: E330–E339

DOI 10.1055/a-1994-6214

ISSN 2364-3722

© 2022. The Author(s).

This is an open access article published by Thieme under the terms of the Creative Commons Attribution-NonDerivative-NonCommercial License, permitting copying and reproduction so long as the original work is given appropriate credit. Contents may not be used for commercial purposes, or adapted, remixed, transformed or built upon. (<https://creativecommons.org/licenses/by-nc-nd/4.0/>)

Georg Thieme Verlag KG, Rüdigerstraße 14,  
70469 Stuttgart, Germany

Supplementary material is available under  
<https://doi.org/10.1055/a-1994-6214>

## Corresponding author

Douglas G. Adler MD, FACC, AGAF, FASGE, Professor of Medicine, Director; Center for Advanced Therapeutic Endoscopy (CATE), Porter Adventist Hospital, Centura Health, Denver, Colorado

Phone: +1-801-581-7878

Fax: +1-801-581-8007

[douglasadler@centura.org](mailto:douglasadler@centura.org)

## ABSTRACT

**Background and study aims** Pancreatic necrosis is an independent predictor of morbidity and mortality among patients with acute pancreatitis. We compared the safety and outcomes of three techniques including endoscopic necrosectomy, fluoroscopy-guided percutaneous necrosectomy by an interventional radiologist, and surgical necrosectomy.

**Patients and methods** Using the Nationwide Readmissions Database, we identified hospitalized patients who underwent pancreatic necrosectomy from 2016 to 2019. They were identified using the International Classification of Diseases, 10th Revision, Procedure Coding System.

**Results:** Of the 2,281 patients meeting the selection criteria, the method of pancreatic necrosectomy was as follows: endoscopy (n=672), percutaneous (n=1,338), and surgery (n=271). Compared to surgery, the rate of mortality was lowest for endoscopy (hazard ratio (HR) 0.27; 95% CI 0.08–0.90;  $P=0.033$ ) followed by percutaneous (HR 0.44; 95% CI, 0.20–0.98;  $P=0.045$ ). Endoscopy was associated with less post-procedure bleeding compared to percutaneous and surgical necrosectomy ( $P<0.001$ ), as well as lower rates of post-procedure renal failure ( $P<0.001$ ) and respiratory failure ( $P=0.002$ ). Endoscopy was associated with average shorter lengths of stay and total hospital costs when compared with percutaneous and surgical approaches, respectively (20.1 vs 25.8 vs 38.3 days;  $P<0.001$ ) and (\$ 57K vs \$ 76K vs \$ 123K;  $P<0.001$ ).

**Conclusions** Endoscopic necrosectomy is associated with significantly lower risk of inpatient mortality, adverse events, length of stay, and cost when compared to percutaneous and surgical approaches.

## Introduction

In the United States, acute pancreatitis is the third most common hospital-related gastrointestinal disorder. Acute pancreatitis is a considerable health care burden with an estimated annual cost of \$2.2 billion [1,2]. Necrotizing disease develops in approximately 15% to 20% of patients with pancreatitis and carries a mortality rate as high as 39% [3,4]. The 2020 American Gastroenterological Association (AGA) guidelines recommend drainage and/or debridement of pancreatic necrosis with symptoms or associated complications such as obstruction, recurrent pancreatitis, or fistula formation [5].

Traditionally, open necrosectomy was the gold standard approach in managing necrotizing pancreatitis [6]. However, earlier surgical debridement techniques were associated with significant morbidity and mortality [7–11]. The current standard of care involves a minimally invasive “step-up” approach involving endoscopic methods of drainage and/or debridement and has largely made direct surgical necrosectomy a thing of the past [5,12–14]. Furthermore, current evidence suggest that endoscopy may offer long-term advantages over the percutaneous approach [15]. This paradigm shift is supported by the literature with studies reporting similar or improved mortality and reduced complication rates including but not limited to organ failure, pancreatic fistula, incisional hernia, and pancreatic insufficiency with endoscopy [16–19].

Nevertheless, nationwide studies evaluating the effect of surgical, percutaneous, and endoscopic intervention on clinical outcomes is not well described in the literature. Thus, we aimed to examine the effect of each of these interventions on 30-day readmission rates, inpatient mortality, and healthcare utilization using a nationwide inpatient database.

## Patients and methods

### Data source

A national retrospective cohort study was conducted using the Healthcare Cost and Utilization Project (HCUP) Nationwide Readmissions Database (NRD) from 2016 to 2019. The NRD is a database of inpatient admissions and readmissions representing about 60% of all-payer hospitalizations and the United States population [20]. International Classification of Diseases, Tenth Revision (ICD-10) codes were used to identify diagnoses and procedures. Patients were included in the study if they were at least 18 years of age with a non-elective admission diagnosis of pancreatic necrosis (ICD-10-CM codes K85.9, K85.01, K85.02, K85.11, K85.12, K85.21, K85.22, K85.31, K85.32, K85.81, K85.82) and further stratified according to endoscopic (ICD-10-CM code 0F9G8), percutaneous (by an interventional radiologist) (ICD-10-CM code 0F9G3), and surgical necrosectomy (ICD-10-CM codes 0F9G0) from January to November; patients were excluded if admitted in December to track 30-day readmission rates. Readmissions were also excluded if related to a traumatic injury.

## Characteristics

Baseline patient characteristics included demographical variables (age and gender), length of hospital stay for index admission, elective admission, day of admission, hospital teaching status, number of beds, type of insurance (Medicare, Medicaid, private, self-pay, other), rural-urban district code, household income, discharge outcome (death or survival), and 30-day readmission status. We calculated the Elixhauser comorbidity index to adjust for multiple comorbidities, which accounts for 29 clinical variables [21]. Elixhauser comorbidity software by Quan et al. is a user-available program utilized to classify comorbidities [22, 23].

## Outcomes

Outcomes included readmission rates, length of stay, cost, adverse events, and mortality. Readmissions were identified using the unique identifier “nrd\_visitlink”. Readmissions were included if they occurred after an index admission, met the inclusion criteria, and were within 30 days. Inherently, patients who died during the index hospitalization were excluded. Patients with multiple readmissions had their primary and subsequent readmissions identified and separated for analysis. Time to readmission was calculated from the day of index admission discharge to the day of readmission. Total cost was provided per individual patient within the NRD database and extracted for analysis. We calculated and compared median and interquartile costs for each treatment modality.

## Statistical analysis

Missing data were examined quantitatively and plotted for visualization. Little’s test was used to determine if data were missing completely at random (MCAR) with significance at  $P < 0.05$ . Data were also analyzed using the covariate-dependent missingness (CDM) assumption, an extension of Little’s test, accounting for covariates and unequal variances [24]. Variables with more than 2% missing data that failed Little’s MCAR and CDM testing underwent multiple imputations (25 datasets) for sensitivity analysis [25].

Data was analyzed by descriptive statistics; categorical values were represented as percentages, while continuous variables were represented by median and interquartile ranges. Pearson  $\chi^2$  tests were used to compare categorical variables. Kaplan Meier estimations were used to illustrate differences in 30-day mortality among each modality. We used multivariable regression analysis to evaluate the effect of each treatment modality on outcome variables; cox proportion regression analysis was used to determine the risk of mortality. All statistical analyses were performed with Stata 17 (College Station, Texas, United States). The study was determined to be exempt from Institutional Review Board review because human subjects were not involved. Data was acquired from a de-identified registry publicly accessible.

► **Table 1** Study characteristics of patients undergoing surgical, percutaneous, and endoscopic necrosectomy.

Variables	Surgical necrosectomy		Percutaneous necrosectomy		Endoscopic necrosectomy		Obs, n	P value
	%	SE	%	SE	%	SE		
Hospital procedure volume								
▪ 1st quintile	1.05	(0.75)	2.61	(0.54)	1.01	(0.46)	45	0.000
▪ 2nd quintile	5.04	(1.83)	4.75	(0.80)	0.99	(0.50)	84	
▪ 3rd quintile	11.93	(2.86)	7.30	(1.07)	4.37	(1.21)	159	
▪ 4th quintile	21.40	(3.78)	12.99	(1.54)	13.33	(2.16)	321	
▪ 5th quintile	60.58	(4.89)	72.35	(2.22)	80.30	(2.64)	1,672	
▪ Total	100.00		100.00		100.00		2,281	
Indicator of sex								
▪ Male	66.96	(4.82)	66.75	(1.81)	62.51	(2.79)	1,494	0.463
▪ Female	33.04	(4.82)	33.25	(1.81)	37.49	(2.79)	786	
▪ Total	100.00		100.00		100.00		2,281	
Calendar year								
▪ 2016	6.34	(1.92)	5.16	(0.98)	0.00	(0.00)	86	0.000
▪ 2017	35.16	(5.26)	39.83	(3.05)	5.43	(1.45)	665	
▪ 2018	30.57	(4.77)	26.57	(2.49)	42.43	(4.27)	723	
▪ 2019	27.93	(4.73)	28.44	(2.73)	52.13	(4.29)	806	
▪ Total	100.00		100.00		100.00		2,281	
Insurance carrier								
▪ Medicare	30.07	(4.26)	31.48	(1.98)	29.69	(2.90)	671	0.923
▪ Medicaid	22.16	(3.76)	19.55	(1.75)	17.75	(2.27)	421	
▪ Private insurance	44.27	(5.36)	44.28	(2.08)	47.63	(2.78)	986	
▪ Self-pay	3.51	(1.56)	4.69	(0.87)	4.94	(1.49)	101	
▪ Total	100.00		100.00		100.00		2,179	
Median household income								
▪ 0–25th percentile	22.69	(4.08)	22.06	(1.63)	24.31	(2.85)	516	0.663
▪ 26th to 50th percentile (median)	30.27	(4.16)	31.21	(2.03)	26.12	(2.45)	669	
▪ 51st to 75th percentile	31.06	(3.59)	27.93	(1.84)	28.32	(2.78)	643	
▪ 76th to 100th percentile	15.98	(3.09)	18.80	(1.66)	21.25	(2.52)	434	
▪ Total	100.00		100.00		100.00		2,262	
Bed size of hospital								
▪ Small	5.27	(1.89)	5.41	(1.00)	2.89	(1.29)	106	0.274
▪ Medium	21.52	(4.61)	15.13	(1.84)	14.72	(2.60)	360	
▪ Large	73.21	(4.78)	79.45	(2.07)	82.38	(2.85)	1,815	
▪ Total	100.00		100.00		100.00		2,281	

► **Table 1** (Continuation)

Variables	Surgical necrosectomy		Percutaneous necrosectomy		Endoscopic necrosectomy		Obs, n	P value
	%	SE	%	SE	%	SE		
Hospital urban-rural designation								
▪ Large metropolitan areas with at least 1 million residents	59.92	(5.21)	65.75	(2.91)	70.11	(3.72)	1,513	0.197
▪ Small metropolitan areas with less than 1 million residents	40.08	(5.21)	33.42	(2.89)	29.89	(3.72)	756	
▪ Micropolitan areas	0.00	(0.00)	0.83	(0.34)	0.00	(0.00)	11	
▪ Total	100.00		100.00		100.00		2,281	
Teaching status								
▪ Metropolitan non-teaching	10.23	(2.70)	7.86	(1.11)	3.42	(0.98)	156	0.022
▪ Metropolitan teaching	89.77	(2.70)	91.31	(1.17)	96.58	(0.98)	2,114	
▪ Non-metropolitan hospital	0.00	(0.00)	0.83	(0.34)	0.00	(0.00)	11	
▪ Total	100.00		100.00		100.00		2,281	
Patient Location								
▪ Central counties of metro areas of >= 1 million population	21.89	(3.61)	25.80	(1.97)	25.53	(2.91)	574	0.426
▪ Fringe counties of metro areas of ≥ 1 million population	24.72	(4.53)	21.84	(1.67)	26.47	(3.13)	535	
▪ Counties in metro areas of 250,000–999,999 population	30.00	(4.21)	22.86	(1.83)	20.91	(2.67)	526	
▪ Counties in metro areas of 50,000–249,999 population	7.91	(2.47)	14.09	(1.55)	11.45	(1.92)	286	
▪ Micropolitan counties	10.62	(2.68)	8.76	(1.30)	8.21	(1.78)	201	
▪ Not metropolitan or micropolitan counties	4.85	(1.99)	6.66	(1.20)	7.44	(1.55)	152	
▪ Total	100.00		100.00		100.00		2,274	
Admission day is a weekend								
▪ Admitted Monday-Friday	72.90	(3.91)	72.90	(1.75)	77.02	(2.39)	1,690	0.344
▪ Admitted Saturday-Sunday	27.10	(3.91)	27.10	(1.75)	22.98	(2.39)	590	
▪ Total	100.00		100.00		100.00		2,281	

## Results

### Study characteristics

Between 2016 and 2019, 2,281 patients met the selection criteria of which 34% (n=786) were females. The method of pancreatic necrosectomy (as well as average age with standard deviation) was as follows: endoscopy, 672 (52.1 ± 12.01 years); percutaneous, 1,338 (53.2 ± 11.6 years); and surgery, 271 (52.0 ± 12.01 years). The number of necrosectomies consistently increased each year with 86 procedures performed in 2016, 665 in 2017, 723 in 2018, and 806 in 2019 (► **Table 1**).

### Hospital practices

The majority of necrosectomies were performed at high-volume centers (75%, n=1,672), with a large bed capacity (79.6%, n=1,815), and located typically in the central counties of large metropolitan areas with a population exceeding 1 million people (66.3%, n=1,513). Clinical centers were likely to be metropolitan teaching hospitals (92.7%, n=2,114), and the most common payer for the inpatients was private insurance (45%, n=986), followed by Medicare (30.8%, n=671).

► **Table 2** Multivariable cox regression showing the risk of readmission for patients undergoing surgical, percutaneous, and endoscopic necrosectomy.

Variables	Hazard ratio	P value	95% CI
Necrosectomy			
▪ Surgical	1.00		
▪ Percutaneous	1.48	0.156	[0.86–2.53]
▪ Endoscopic	1.43	0.247	[0.78–2.63]
Hospital procedure volume			
▪ 1st quintile	1.00		
▪ 2nd quintile	1.00	0.998	[0.35–2.86]
▪ 3rd quintile	0.73	0.567	[0.24–2.17]
▪ 4th quintile	1.02	0.964	[0.39–2.68]
▪ 5th quintile	0.92	0.866	[0.36–2.34]
▪ Age in years at admission	1.00	0.522	[0.98–1.01]
Indicator of sex			
▪ Male	1.00		
▪ Female	1.00	0.999	[0.71–1.42]
Calendar year			
▪ 2016	1.00		
▪ 2017	1.32	0.472	[0.62–2.81]
▪ 2018	1.40	0.368	[0.67–2.94]
▪ 2019	1.72	0.150	[0.82–3.62]
Insurance carrier			
▪ Medicare	1.00		
▪ Medicaid	1.01	0.956	[0.62–1.65]
▪ Private insurance	1.11	0.574	[0.77–1.61]
▪ Self-pay	0.84	0.724	[0.32–2.21]
Median household income			
▪ 0–25th percentile	1.00		
▪ 26th to 50th percentile	1.16	0.498	[0.76–1.77]
▪ 51st to 75th percentile	1.30	0.277	[0.81–2.07]
▪ 76th to 100th percentile	1.33	0.295	[0.78–2.25]
Bed size of hospital			
▪ Small	1.00		
▪ Medium	1.15	0.758	[0.47–2.79]
▪ Large	1.30	0.531	[0.57–2.98]
Hospital urban-rural designation			
▪ Large metropolitan areas with ≥ 1 million residents	1.00		
▪ Small metropolitan areas with < 1 million residents	1.52	0.081	[0.95–2.43]
▪ Micropolitan areas	1.17	0.780	[0.38–3.63]

► **Table 2** (Continuation)

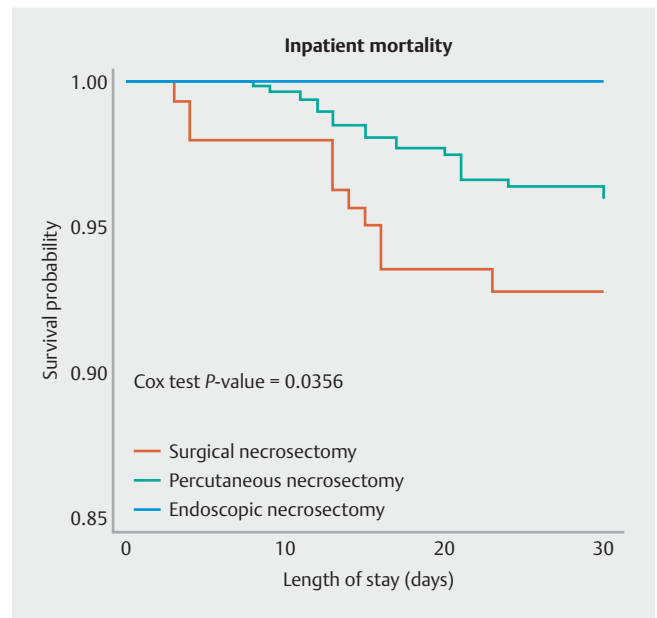
Variables	Hazard ratio	P value	95% CI
Teaching status			
▪ Metropolitan non-teaching	1.00		
▪ Metropolitan teaching	0.97	0.934	[0.53–1.80]
▪ Non-metropolitan hospital	1.00		
Patient location			
▪ Central counties of metro areas ≥ 1 million population	1.00		
▪ Fringe counties of metro areas ≥ 1 million population	0.96	0.851	[0.63–1.47]
▪ Counties in metro areas of 250,000–999,999 population	1.01	0.975	[0.55–1.84]
▪ Counties in metro areas of 50,000–249,999 population	1.02	0.955	[0.57–1.83]
▪ Micropolitan counties	1.00	0.999	[0.45–2.23]
▪ Not metropolitan or micropolitan counties	1.18	0.679	[0.54–2.60]
▪ Admission day is a weekend	0.80	0.233	[0.55–1.16]
▪ Elixhauser Comorbidity Summary	1.10	0.013	[1.02–1.18]

## Readmissions

From the total cohort of patients, approximately 24.2% (n = 552) of patients who underwent necrosectomy experienced 30-day hospital readmission. Using multivariable cox regression analysis, compared to surgery, percutaneous necrosectomy had a mildly higher risk for readmission followed by endoscopy, however, this was not statistically significant (percutaneous hazard ratio (HR): 1.48, 95% CI 0.86 – 2.53,  $P=0.156$ ; endoscopy HR: 1.43, 95% CI 0.78 – 2.63,  $P=0.247$ ) (► **Table 2**).

## Mortality and adverse events

Kaplan Meier survival analysis comparing endoscopy, percutaneous, and surgical necrosectomy revealed that endoscopy was associated with the lowest 30-day mortality outcome ( $P=0.0356$ ) (► **Fig. 1**). Using adjusted Cox proportion regression models, compared to surgery, the risks of mortality was lowest for endoscopy (HR: 0.27; 95% CI 0.08–0.90;  $P=0.033$ ) followed by percutaneous (HR: 0.44; 95% CI, 0.20–0.98;  $P=0.045$ ) (► **Table 3**). Endoscopy was associated with less post-procedure bleeding and need for transfusion of blood products compared to percutaneous and surgical necrosectomy (n = 74 vs n = 195 vs n = 102;  $P<0.001$  and n = 41 vs n = 177 vs n = 51;  $P<0.001$ , respectively). Endoscopy and surgery had similar rates of acute kidney injury (AKI); however, the rate of AKI was lower when compared to percutaneous necrosectomy (n = 134, vs n = 449, vs n = 133;  $P<0.001$ ). Endoscopic necrosectomy was least likely to be associated with respiratory failure when compared to percutaneous and surgical approaches (n < 10, vs n = 18, vs n = 13;  $P=0.002$ ), see **Supplementary Table 1**. Due to HCUP guidelines, data with counts < 10 could not be presented.



► **Fig. 1** Survival curve comparing endoscopic, percutaneous, and surgical necrosectomy using cox regression analysis.

## Length of stay and cost

Endoscopy was associated with an average shorter length of stay of 20.1 days compared to 25.8 days for percutaneous necrosectomy and 38.3 days for surgical necrosectomy ( $P<0.001$ ). Total hospital costs were lowest for endoscopy compared to percutaneous and surgical necrosectomies, respectively (\$57K vs \$76K vs \$123K,  $P<0.001$ ).

► **Table 3** Multivariable cox regression showing mortality risk.

Variables	Hazard Ratio	P value	95% CI
Necrosectomy			
▪ Surgical	1.00		
▪ Percutaneous	0.44	0.045	[0.20–0.98]
▪ Endoscopic	0.27	0.033	[0.08–0.90]
Hospital procedure volume			
▪ 1st quintile	1.00		
▪ 2nd quintile	586303537.04		
▪ 3rd quintile	637016451.05	0.000	[7.3e+07–5.5e+09]
▪ 4th quintile	1172755835.53	0.000	[8.9e+07–1.5e+10]
▪ 5th quintile	1036563885.57	0.000	[6.8e+07–1.6e+10]
▪ Age in years at admission	1.05	0.004	[1.02–1.09]
Indicator of sex			
▪ Male	1.00		
▪ Female	0.68	0.411	[0.27–1.70]
Calendar year			
▪ 2016	1.00		
▪ 2017	1.53	0.514	[0.43–5.45]
▪ 2018	3.36	0.010	[1.33–8.47]
▪ 2019	3.66	0.010	[1.36–9.82]
Insurance carrier			
▪ Medicare	1.00		
▪ Medicaid	0.67	0.663	[0.11–3.98]
▪ Private insurance	1.33	0.504	[0.58–3.06]
▪ Self-pay	1.03	0.959	[0.29–3.64]
Median household income			
▪ 0–25th percentile	1.00		
▪ 26th to 50th percentile (median)	1.52	0.469	[0.49–4.78]
▪ 51st to 75th percentile	0.93	0.907	[0.28–3.09]
▪ 76th to 100th percentile	0.62	0.461	[0.17–2.22]
Bed size of hospital			
▪ Small	1.00		
▪ Medium	3.00	0.499	[0.12–73.47]
▪ Large	1.71	0.761	[0.05–53.50]
Hospital urban-rural designation			
▪ Large metropolitan areas with ≥ 1 million residents	1.00		
▪ Small metropolitan areas with < 1 million residents	1.40	0.586	[0.41–4.76]
▪ Micropolitan areas	0.00		

► **Table 3** (Continuation)

Variables	Hazard Ratio	P value	95% CI
Teaching status of urban hospitals			
▪ Metropolitan non-teaching	1.00		
▪ Metropolitan teaching	1.86	0.563	[0.23–15.09]
▪ Non-metropolitan hospital	1.00		
Patient Location: NCHS Urban-Rural Code			
▪ Central counties of metro areas ≥ 1 million population	1.00		
▪ Fringe counties of metro areas ≥ 1 million population	0.98	0.963	[0.38–2.49]
▪ Counties in metro areas of 250,000–999,999 population	1.07	0.924	[0.26–4.47]
▪ Counties in metro areas of 50,000–249,999 population	0.92	0.903	[0.22–3.82]
▪ Micropolitan counties	0.38	0.355	[0.05–2.98]
▪ Not metropolitan or micropolitan counties	0.70	0.758	[0.07–6.82]
▪ Admission day is a weekend	0.73	0.497	[0.30–1.79]
▪ Elixhauser Comorbidity Summary	0.99	0.956	[0.80–1.23]

## Discussion

To our knowledge, this is the first nationwide study to assess outcomes and healthcare utilization among patients undergoing three therapeutic modalities for pancreatic necrosectomy using endoscopic, percutaneous, and surgical approaches. This study includes several novel observations.

First, the number of necrosectomies identified in this nationwide database increased each year and were primarily performed at academic teaching hospitals. It is unclear what is driving this increased number of pancreatic necrosectomies and may be multifactorial. However, anecdotally, since the widespread adoption of lumen apposing metal stents (LAMS) into clinical practice as well as the adoption of a ‘step-up’ approach, the number of necrosectomies has shifted towards endoscopy from percutaneous and surgical approaches. However, this may not fully explain the rise observed in this study and may reflect a limitation of the database pertaining to a change in coding from ICD-9 to ICD-10.

Readmission rates were similar for all three methods. Our data is in-line with a single center UK study comparing endoscopic, minimal access retroperitoneal (MARPN), and open necrosectomy which reported similar readmission rates among these modalities ( $P=0.850$ ) [26]. A US study by Bang et al. compared endoscopic and surgical approaches, which also reported similar readmission rates between the two cohorts ( $P=0.145$ ) [27].

Second, endoscopy was associated with significantly less mortality (despite controlling for the severity of illness across multiple parameters using Elixhauser comorbidity scores). When compared to surgery, patients undergoing endoscopic necrosectomy were 73% less likely to experience mortality, while the percutaneous approach was associated with 54% less mortality. To this end, a meta-analysis comparing endoscopic

and surgical drainage for necrotizing pancreatitis comprising of 11,807 patients showed that the pooled rate of mortality following surgical necrosectomy was 22% (95% confidence interval [CI]: 19%–26%) and 3% (95%CI:2%–4%) in the endoscopic drainage cohort [28]. Khan et al. performed a meta-analysis comparing endoscopic and percutaneous drainage of pancreatic fluid collections which included seven studies with 490 patients [29]. The study reported that five deaths occurred during 30-day follow-up in the percutaneous group, while no deaths occurred in the endoscopic group ( $P=0.16$ ). Our study looked at real-world outcomes using a readmission claims database to provide nationally representative and comparative data across all three modalities; our analysis demonstrated that endoscopy was least likely to be associated with inpatient mortality as well as less blood transfusion requirements and incidence of respiratory failure.

Third, endoscopy had the shortest average length of hospital stay. On average, patients stayed a total of 20 days if they had an endoscopic necrosectomy compared to 38 days with percutaneous necrosectomy and 38.3 days with surgical necrosectomy. The randomized trial by Bang et al. showed that patients who had endoscopic necrosectomy spent on average 16.5 ( $\pm 12.2$ ) days in the hospital compared with patients who had surgery spent on average 23.3 (17.5) days in the hospital [27]. However, this was not statistically significant ( $P=0.57$ ) likely due to the small sample size ( $n=66$ ). However, a trend towards statistical significance ( $P=0.57$ ) together with the findings in our study provides more evidence that patients who undergo endoscopic interventions for treating pancreatic necrosis are likely to experience shorter hospital lengths of stay.

When compared to the cost of surgery, endoscopic necrosectomy, on average, was associated with \$66K less cost per patient. Patients who underwent percutaneous necrosectomy experienced an average reduction of \$47K compared to the cost



associated with surgery. These findings are consistent with prior observations [27]. Prasath et al. performed a cost-effectiveness analysis comparing endoscopic and surgical necrosectomy [30]. The study showed that using an endoscopic step-up approach was the dominant economic strategy with 7.92 QALYs for \$90,864.09. Using a surgical step-up approach resulted in a decrease of 0.09 QALYs and a cost increase of \$10,067.89 while open necrosectomy resulted in a decrease of 0.4 QALYs and an increased cost of \$18,407.52.

Our study has limitations. First, admissions were identified using only the primary diagnosis, consistent with best used methodologies provided by HCUP. This accepted protocol ensures that only patients with pancreatic necrosis are identified. Nonetheless, patients may be missed if their disease led to admission but was not listed as the first diagnosis or if they were treated as outpatients. Second, due to the retrospective observational nature of this study, residual confounders may be missed, and causality cannot be established. Third, while we were able to control for severity of illness, we were unable to account for why patients were treated by a specific modality. In theory, percutaneous and/or surgical approaches could be used for more complex cases and thereby influence outcomes. Furthermore, despite controlling for severity of illness, mortality in severe acute pancreatitis can be due to several other systemic factors including the presence of infected necrosis not fully accounted for in our study. Fourth, the NRD does not provide medications, laboratory, or imaging results. Finally, as comorbidities are identified using the presence of specific ICD-10 codes, the potential for coding errors or missed coding may skew the results.

## Conclusions

Our study is the first to compare endoscopic, percutaneous, and surgical necrosectomy across a validated nationwide inpatient database. This study highlights the safety and economic impact of using endoscopy as the preferred method for necrosectomy in patients with pancreatic necrosis.

## Competing interests

Dr. Douglas G. Adler is a consultant for Boston Scientific and Micro Tech. All other authors have no relevant conflict of interests.

## References

- [1] Shaheen NJ, Hansen RA, Morgan DR et al. The burden of gastrointestinal and liver diseases, 2006. *Am J Gastroenterol* 2006; 101: 2128–2138
- [2] Fagenholz PJ, Fernández-del Castillo C, Harris NS et al. Direct medical costs of acute pancreatitis hospitalizations in the United States. *Pancreas* 2007; 35: 302–307
- [3] Beger HG, Rau B, Mayer J et al. Natural course of acute pancreatitis. *World J Surg* 1997; 21: 130–135
- [4] Banks PA, Freeman ML. Practice Parameters Committee of the American College of Gastroenterology. Practice guidelines in acute pancreatitis. *Am J Gastroenterol* 2006; 101: 2379–2400
- [5] Baron TH, DiMaio CJ, Wang AY et al. American Gastroenterological Association Clinical Practice Update: Management of Pancreatic Necrosis. *Gastroenterology* 2020; 158: 67–75.e1
- [6] Traverso LW, Kozarek RA. Pancreatic necrosectomy: definitions and technique. *J Gastrointest Surg* 2005; 9: 436–439
- [7] Tsiotos GG, Luque-de León E, Sarr MG. Long-term outcome of necrotizing pancreatitis treated by necrosectomy. *Br J Surg* 1998; 85: 1650–1653
- [8] Rau B, Bothe A, Beger HG. Surgical treatment of necrotizing pancreatitis by necrosectomy and closed lavage: changing patient characteristics and outcome in a 19-year, single-center series. *Surgery* 2005; 138: 28–39
- [9] Connor S, Alexakis N, Raraty MG et al. Early and late complications after pancreatic necrosectomy. *Surgery* 2005; 137: 499–505
- [10] Howard TJ, Patel JB, Zyromski N et al. Declining morbidity and mortality rates in the surgical management of pancreatic necrosis. *J Gastrointest Surg* 2007; 11: 43–49
- [11] Haghshenas Kashani A, Laurence JM, Kwan V et al. Endoscopic necrosectomy of pancreatic necrosis: a systematic review. *Surg Endosc* 2011; 25: 3724–3730
- [12] Working Group IAP/APA Acute Pancreatitis Guidelines. IAP/APA evidence-based guidelines for the management of acute pancreatitis. *Pancreatol* 2013; 13: e1–e15
- [13] Arvanitakis M, Dumonceau JM, Albert J et al. Endoscopic management of acute necrotizing pancreatitis: European Society of Gastrointestinal Endoscopy (ESGE) evidence-based multidisciplinary guidelines. *Endoscopy* 2018; 50: 524–546
- [14] Ramai D, Enofe I, Deliwala SS et al. Early (<4 Weeks) Versus Standard (≥ 4 Weeks) Endoscopic Drainage of Pancreatic Walled-Off Fluid Collections: A Systematic Review and Meta-analysis [published online ahead of print, 2022 Nov 14]. *Gastrointest Endosc* 2022; doi:10.1016/j.gie.2022.11.003
- [15] Onnekink AM, Boxhoorn L, Timmerhuis HC et al. Endoscopic Versus Surgical Step-Up Approach for Infected Necrotizing Pancreatitis (EXTENSION): long-term follow-up of a randomized trial. *Gastroenterology* 2022; 163: 712–722.e14
- [16] van Santvoort HC, Besselink MG, Bakker OJ et al. A step-up approach or open necrosectomy for necrotizing pancreatitis. *N Engl J Med* 2010; 362: 1491–1502
- [17] van Brunschot S, van Grinsven J, van Santvoort HC et al. Endoscopic or surgical step-up approach for infected necrotising pancreatitis: a multicentre randomised trial. *Lancet* 2018; 391: 51–58
- [18] Hollemans RA, Bakker OJ, Boermeester MA et al. Superiority of step-up approach vs open necrosectomy in long-term follow-up of patients with necrotizing pancreatitis. *Gastroenterology* 2019; 156: 1016–1026
- [19] Ricci C, Pagano N, Ingaldi C et al. Treatment for infected pancreatic necrosis should be delayed, possibly avoiding an open surgical approach: a systematic review and network meta-analysis. *Ann Surg* 2021; 273: 251–257
- [20] HCUP Nationwide Readmissions Database (NRD). Healthcare Cost and Utilization Project (HCUP). Rockville, MD: Agency for Healthcare Research and Quality; 2019: <https://www.hcup-us.ahrq.gov/nrdoverview.jsp>
- [21] Moore BJ, White S, Washington R et al. Identifying increased risk of readmission and in-hospital mortality using hospital administrative data: The AHRQ Elixhauser Comorbidity index. *Med Care* 2017; 55: 698–705

- [22] Quan H, Sundararajan V, Halfon P et al. Coding algorithms for defining comorbidities in ICD-9-CM and ICD-10 administrative data. *Med Care* 2005; 43: 1130–1139
- [23] van Walraven C, Austin PC, Jennings A et al. A modification of the Elixhauser comorbidity measures into a point system for hospital death using administrative data. *Med Care* 2009; 47: 626–633
- [24] Li C. Little's test of missing completely at random. *Stata J* 2013; 13: 795–809
- [25] Royston P. Multiple imputation of missing values. *Stata J* 2004; 4: 227–241
- [26] Saunders R, Hughes FE, Evans JC et al. Cost analysis and outcomes of endoscopic, minimal access and open pancreatic necrosectomy. *Ann Surg Open* 2021; 2: e068
- [27] Bang JY, Arnoletti JP, Holt BA et al. An endoscopic transluminal approach, compared with minimally invasive surgery, reduces complications and costs for patients with necrotizing pancreatitis. *Gastroenterology* 2019; 156: 1027–1040
- [28] Mohamadnejad M, Anushiravani A, Kasaeian A et al. Endoscopic or surgical treatment for necrotizing pancreatitis: Comprehensive systematic review and meta-analysis. *Endosc Int Open* 2022; 10: E420–E428
- [29] Khan MA, Hammad T, Khan Z. Endoscopic versus percutaneous management for symptomatic pancreatic fluid collections: a systematic review and meta-analysis. *Endosc Int Open* 2018; 6: E474–E483
- [30] Prasath V, Quinn PL, Oliver JB et al. Cost-effectiveness analysis of infected necrotizing pancreatitis management in an academic setting. *Pancreatology* 2022; 22: 185–193