


REVIEW

Public Health / Behavior

Do eating behavior traits predict energy intake and body mass index? A systematic review and meta-analysis

Clarissa Dakin¹  | Kristine Beaulieu¹ | Mark Hopkins² | Catherine Gibbons¹ |
Graham Finlayson¹ | R. James Stubbs¹

¹Appetite Control and Energy Balance Research Group (ACEB), School of Psychology, Faculty of Medicine and Health, University of Leeds, Leeds, UK

²School of Food Science & Nutrition, University of Leeds, Leeds, UK

Correspondence

Clarissa Dakin, Appetite Control and Energy Balance Research Group (ACEB), School of Psychology, Faculty of Medicine and Health, University of Leeds, Leeds, UK.
Email: psscda@leeds.ac.uk

Funding information

Slimming World

[Correction added on 18 November 2022, after first online publication: The order of author names have been corrected in this version.]

Summary

At present, it is unclear whether eating behavior traits (EBT) predict objectively measured short-term energy intake (EI) and longer-term energy balance as estimated by body mass index (BMI). This systematic review examined the impact of EBT on BMI and laboratory-based measures of EI in adults (≥ 18 years) in any BMI category, excluding self-report measures of EI. Articles were searched up until 28th October 2021 using MEDLINE, PsycINFO, EMBASE and Web of Science. Sixteen EBT were identified and the association between 10 EBT, EI and BMI were assessed using a random-effects meta-analysis. Other EBT outcomes were synthesized qualitatively. Risk of bias was assessed with the mixed methods appraisal tool. A total of 83 studies were included (mean BMI = 25.20 kg/m², mean age = 27 years and mean sample size = 70). Study quality was rated moderately high overall, with some concerns in sampling strategy and statistical analyses. Susceptibility to hunger ($n = 6$) and binge eating ($n = 7$) were the strongest predictors of EI. Disinhibition ($n = 8$) was the strongest predictor of BMI. Overall, EBT may be useful as phenotypic markers of susceptibility to overconsume or develop obesity (PROSPERO: CRD42021288694).

KEYWORDS

eating behavior, energy intake, obesity

1 | INTRODUCTION

Obesity is a common, serious, and costly condition with significant health care and societal costs.¹ There is current interest in identifying psychological and physiological markers that characterize individuals who are susceptible to weight gain. Eating behaviors influence amount and types of foods eaten and hence energy intake (EI).² Eating behavior traits (EBT) are considered to be reliable, acquired indices of food-related behaviors.³ EBT have been extensively studied in an attempt to identify potential markers that detect tendency to overconsume.⁴ This has led to the development of several constructs and

psychometric measures, which aim to capture important individual differences in eating behavior and disordered eating symptomology, for example, the Three Factor Eating Questionnaire (TFEQ) with subscales for cognitive restraint, susceptibility to hunger and disinhibition.⁵ Many EBT have been reported to be associated with excess food intake.⁶⁻⁹ However, 'overconsumption' is often assessed by other self-report measures which are prone to misreporting and not truly representative of actual food intake.¹⁰ For example, in a systematic review on the associations between emotions and eating behavior, the majority of studies associated self-reported emotions with another self-reported EBT as a proxy of food intake.¹¹ Associations

This is an open access article under the terms of the [Creative Commons Attribution-NonCommercial-NoDerivs](https://creativecommons.org/licenses/by-nc-nd/4.0/) License, which permits use and distribution in any medium, provided the original work is properly cited, the use is non-commercial and no modifications or adaptations are made.

© 2022 The Authors. *Obesity Reviews* published by John Wiley & Sons Ltd on behalf of World Obesity Federation.

between EBT and EI have yet to be extensively reviewed and little is known about which EBTs influence objectively measured EI.

Previous systematic reviews have begun to answer these questions indirectly by examining associations between EBT and BMI.^{9,11,12} BMI is an index of long-term energy balance status. Vainik, Dagher, Dubé and Fellows¹² found that several different personality measures were consistently associated with BMI. However, very few measures included were eating-related. French, Epstein, Jeffery, Blundell and Wardle⁹ reviewed seven eating behavior dimensions and found that most of the available data showed positive cross-sectional associations with BMI. However, very few studies reported measures of EI and only four measures were eating-related. Overall, disinhibition had the largest empirical support to link it prospectively with weight gain and a narrative review also found that disinhibition plays a significant role in obesity, diet quality and uncontrolled eating patterns.¹³ As few measures associated with psychological eating behavior have been reviewed, this systematic review aimed to assess all possible psychological EBT.

EBT are theoretical constructs operationalized through eating-related measures. There is currently no database of EBT, and studies often refer to these traits with different names, for example, overeating measures, eating behavior dimensions, appetite measures and eating attitudes. Consequently, a conceptual diagram was developed to capture the scales used to assess EBT and to a-priori allocate all of the collected scales to theoretical domains (see Figure 1). Firstly, a scoping exercise was conducted to create EBT domains, then subdomains were identified, which formed the basis for the search strategy.

Secondly, this systematic review was conducted to identify studies that included measures of both EI and BMI in the same population. This systematic review included only laboratory-based measures of EI. Use of a controlled environment allows for more standardized, objective measurement of EI.¹⁴ This is more accurate and precise than self-report EI.¹⁵

The primary aim of this systematic review was to examine whether EBT predicts short-term EI and whether there is evidence that this effect translates into longer term energy balance, as estimated by BMI. The specific research questions of the review were: (1) What measures are used to capture EBT? (2) How well do these measures predict short term EI? (3) How well do these measures predict BMI? (4) Do some EBT and questionnaires used to measure EBT better predict EI or BMI than others?

2 | METHODS

2.1 | Information sources and search strategy

Four electronic databases were searched: MEDLINE (Ovid), PsycINFO (Ovid), EMBASE (Ovid) and Web of Science (core collection). The MEDLINE, Embase and PsychInfo strategies were run simultaneously as a multi-file search in Ovid on 28th October 2021. Searches for all databases are included in Table S1. The conceptual diagram, alongside the identification of key databases formed the basis for the search strategy (see Figure 1). All proposed EBT and their domains were

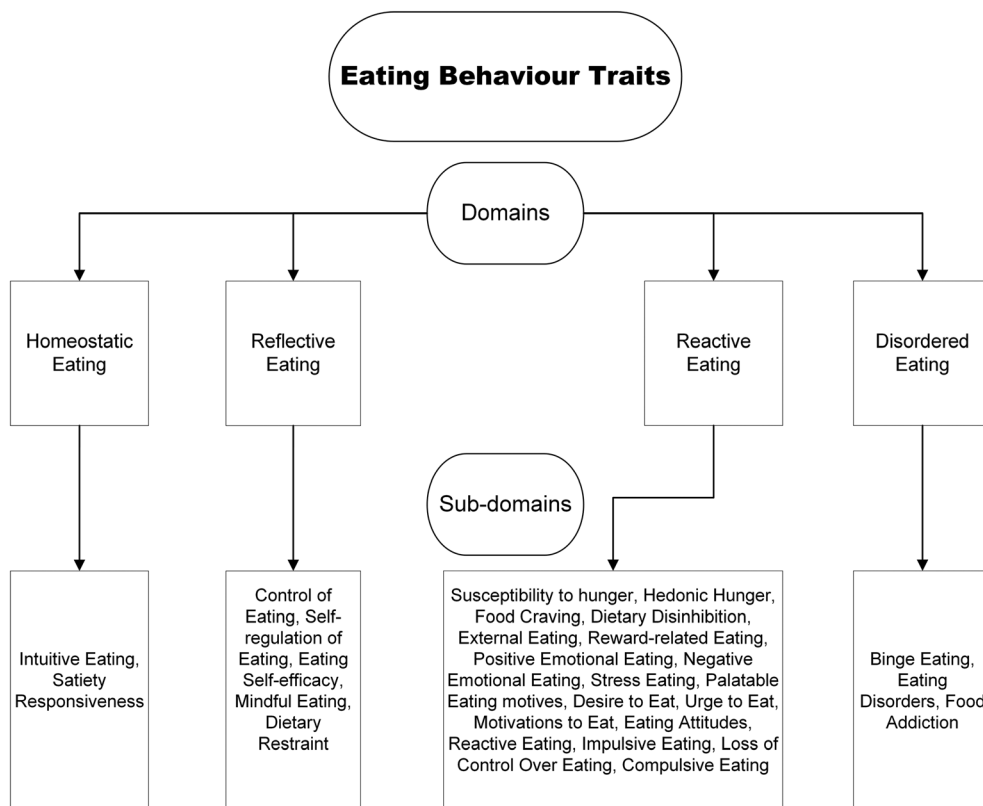


FIGURE 1 A conceptual diagram of eating behavior traits.

included in the search. Key databases such as the UCL database for eating behavior questionnaires,¹⁶ NIH obesity measures,¹⁷ and Arab psychology scales¹⁸ were used to find relevant eating-related questionnaires to include in the search. Because many studies use EBT but not in relation to measured eating behavior, the search also required studies to include key words related to eating behavior or eating traits (see Table S1). The two outcome measures were EI and BMI (and their related terms, see Table S1). Limits were set to include articles published in English (as translating studies into English could lead to relevant information being mistranslated) and humans. The search strategies were peer reviewed by three experts in the field (KB, JS, GF) prior to execution using the PRESS checklist.¹⁹ Duplicates were removed using Screenatron's 'deduplication' tool and were checked to ensure all duplicates found were actual duplications. This systematic review followed PRISMA guidelines²⁰ and was pre-registered with PROSPERO (registration number = CRD42021288694).

2.2 | Study selection, inclusion, and exclusion

Articles were included if they recruited adults (≥ 18 years including older adults) in any BMI category. The presence of the following was not excluded: type 2 diabetes, pre-menopausal/post-menopausal women, cardiovascular diseases. Those with the following comorbidities were excluded: Parkinson's disease, anorexia, bulimia nervosa, binge eating disorder, cancers, inflammatory bowel diseases, intellectual deficiency, psychiatric conditions, sleep disorders, those having undergone weight loss surgery (gastric bypass or bariatric surgery) and those who were pregnant. As binge eating was identified as an EBT in the scoping exercise, any study that used a binge eating scale (e.g., binge eating scale²¹) to classify binge eaters was included. However, if studies identified participants with binge eating disorder using a version of the DSM, for example, DSM-5,²² this was not recognized as an EBT and these studies were excluded. Studies that measured psychological variables, for example, stress or mood, were excluded unless an EBT was also measured, for example, emotional eating. In cases where studies measured other variables alongside EBT, the reviewers discussed whether these variables would be considered potential contaminants of the outcomes. For example, an alcohol preload or a food craving protocol were considered potential contaminants and were excluded if no data was given for a control condition. Self-report measures of EI were excluded as this systematic review focused on laboratory-based measures of EI but were saved for a future review. Laboratory-based measures of EI also included studies where EI was measured in a laboratory and weighed food was given to participants to take home and bring back to be re-weighed, as this measure of EI is considered in the literature to be ad-libitum EI.

All titles and abstracts were assessed for eligibility by the main author (CD) and were also independently screened by three researchers (MH, JS, GF), with uncertainty regarding eligibility discussed among the researchers. Reference lists from the resulting reviews were also screened to identify additional articles. Full texts were retrieved and assessed for eligibility by CD and were also

independently assessed by JS and GF. Intervention studies that included results for a control condition or baseline measures were included. Studies that only measured one of the outcomes variables (EI or BMI) were excluded. If a study measured both outcome variables but the results for one of the outcome measures was missing, the study authors were contacted for the missing outcome results. In this case, the study was included for data extraction as both outcome variables were measured. Thirty-three authors were contacted about missing data. Five authors responded with the necessary data.

2.3 | Data extraction and synthesis

Data was extracted by one author (CD) and was cross-checked for data extraction errors by JS and GF. Data was extracted using the data collection form for intervention reviews (randomized control trials and non-randomized control trials) from the Cochrane group.²³ The characteristics of each included article consisted of title, study ID, publication type, study design, aim of the study, ethical information, number of participants, population characteristics (age, BMI, % female, ethnicity, population description, method of recruitment, inclusion/exclusion criteria), description of EBT, description of outcomes (method, definition, unit of measurement and validation information for the collection and measurement of BMI and EI), study funding sources, possible conflicts of interests, data and analysis (results, including number of participants, means and standard deviations where possible, unit of analysis, statistical methods used and appropriateness of these), key conclusions of study authors and references to other available studies. Where means and standard deviations were not reported, correlations, F-values or t-values were extracted, and standard errors were converted to standard deviations. Effects on EI and BMI were examined using a random-effects meta-analysis because it was anticipated that there would be considerable between-study heterogeneity. All analyses were carried out in the R environment, version 2021.09.0.²⁴ The following R packages were used: dmetar,²⁵ esc,²⁶ tidyverse,²⁷ and meta.²⁸

Meta-analysis of the effect of each EBT on BMI and EI was performed when ≥ 2 effect sizes were available for each trait. For each analysis, effect sizes were pooled using the *r* value from correlations and were transformed to Fisher's *Z*.²⁹ Where correlations were not present, the available raw data were transformed into Fisher's *Z*. Where one study provided data for more than one questionnaire (e.g., all participants completed the DEBQ and TFEQ), the sample size was halved to prevent 'double counting', which can artificially inflate effect sizes and distort results.^{30,31} If studies provided data for multiple types of EI outcome, for example, sweet, and savory EI, or provided data for multiple preloads, the selected outcomes were pooled to provide a single 'total EI' correlation, to prevent overpowering of a single study. Effect sizes based on Fisher's *Z* were interpreted as very small (≤ 0.05), small ($>0.05 - <0.10$), moderate ($>0.10 - <0.30$), large ($>0.30 - <0.40$), and very large (≥ 0.40).³² The restricted maximum likelihood estimator was used to calculate heterogeneity variance and heterogeneity was also evaluated using the I-squared

statistic (I^2), with values inferred as low (<25%), moderate (25%–75%), and high (>75%). However, the I^2 statistic was interpreted cautiously when the number of studies in each meta-analysis was <7. In this case, it is advised that confidence intervals should supplement the I^2 statistic; therefore, confidence intervals were also provided for each meta-analysis.³³ Knapp-Hartung adjustments³⁴ were also used to calculate the confidence interval around the pooled effect. The Knapp-Hartung adjustment can reduce the chance of false positives, especially when the number of studies is small.³⁵ The results of the meta-analyses are presented as forest plots, which include the authors, standard error (SE), questionnaire type, correlation (COR), 95% confidence intervals, weight and Hedges G ³⁶ that is converted from Fisher's Z .

Further analysis of outliers and influential cases was conducted using a leave-one-out analysis in addition to identifying influential cases, and results are reported for both the main meta-analyses and further analyses where outliers or influential cases were removed. Publication bias was assessed by visually inspecting the funnel plot and Egger's regression test when the number of included studies was <10. Duval and Tweedie's trim-and-fill method was also used. Two subgroup analyses were conducted to test whether the effect of restraint on BMI and EI was influenced by the type of questionnaire used because the questionnaires used to measure restraint varied across studies. Additionally, a subgroup analysis tested whether the use of a preload influenced the correlation between restraint and EI. Studies were split into 'no preload' and 'preload' categories. For the preload studies, effect sizes were conducted for both no preload and preload groups, and sample size was halved to prevent double counting.^{30,31} Where studies included multiple preload conditions, the largest preload condition was used to calculate the effect size. Subgroup analyses were also conducted to test the influence of meal type (1 test meal vs. multiple test meals) where there were ≥ 10 effect sizes available for each EBT and ≥ 2 per category.

2.4 | Quality assessment

To assess risk of bias, the excel version of the mixed method appraisal tool (MMAT) for appraising studies was used.³⁷ It is a critical appraisal tool designed for systematic mixed studies reviews (including qualitative, quantitative, and mixed methods studies). The MMAT has been pilot tested and has high content validity.³⁸ The following questions were answered to determine the risk of bias: is the sampling strategy relevant to address the research question, is the sample representative of the target population, are the measurements appropriate, is the risk of nonresponse bias low and is the statistical analysis appropriate to answer the research question? The four assessment items represented flaws if answered "No/cannot tell." It is discouraged to calculate an overall score from the ratings of each criterion; therefore, a detailed discussion of the ratings follows. Quality assessment was completed by the main reviewer (CD) and was cross-checked by JS and GF.

3 | RESULTS

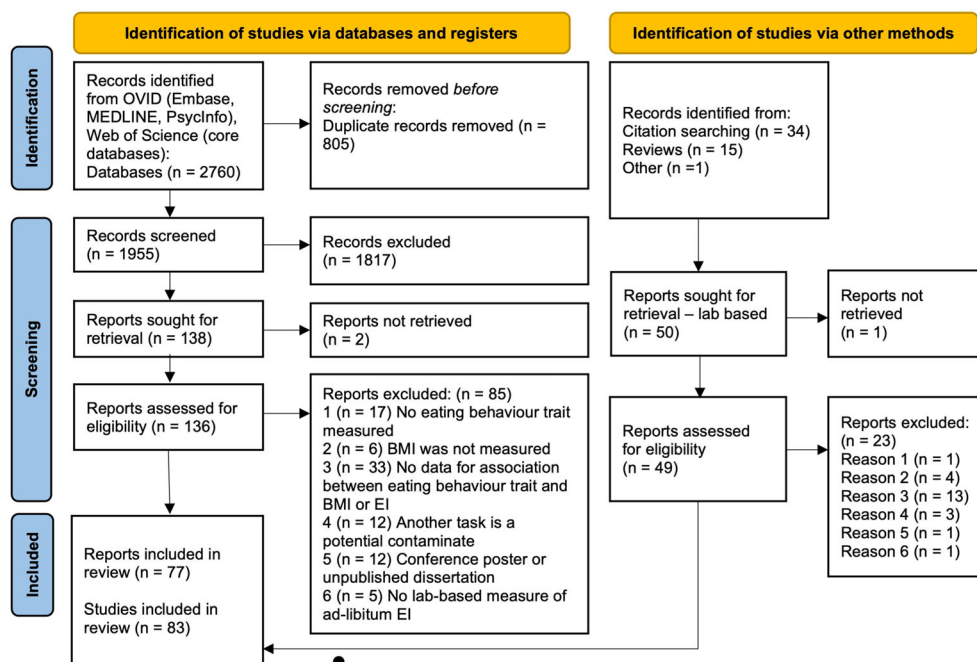
2,760 articles were retrieved from the four databases. After deduplication, 1955 articles remained for title and abstract screening. The reasons for excluding any studies that did not meet the inclusion criteria during full text screening are shown in the flow diagram in Figure 2. Seventy-seven papers met the inclusion criteria and were included in this systematic review, with some papers consisting of several studies. In total, 83 studies were included. Several studies could not be synthesized for each EBT meta-analysis; therefore, the number of studies included in each meta-analysis varies. Where meta-analysis was not possible, associations between the EBT and outcome variables are qualitatively summarized. Table 1 gives the included questionnaires used to measure EBT and their abbreviations.

3.1 | Study characteristics

Study characteristics are summarized in Table 2 (see Table S2 for more detailed characteristics). The studies were published between 1975 and 2021. All data from the studies are cross-sectional. The following EBT were identified, restraint ($n = 50$), disinhibition ($n = 17$), emotional eating ($n = 12$), binge eating ($n = 8$), external eating ($n = 7$), susceptibility to hunger ($n = 6$), hedonic hunger ($n = 4$), satiety responsiveness ($n = 3$ via Satiety Quotient, SQ) and $n = 1$ via AEBQ), intuitive eating ($n = 3$), food craving ($n = 1$), mindful eating ($n = 1$), eating disorders ($n = 1$), food addiction ($n = 1$), eating self-efficacy ($n = 1$), control of eating ($n = 1$), reward-related eating ($n = 1$). The mean (range) of the total sample size was 70 (18–273). The mean (range) age of participants was 27 years (19–59 years); BMI was 25.20 kg/m² (21.0–36.8 kg/m²). Males and females were included in 25 studies, females only in 56 studies, males only in 1 study and no data was given for 1 study. BMI was objectively measured in 52 studies, self-reported in 10 studies, and in 21 studies, there was no information for how BMI was measured. Measures of EI varied widely across studies. EI was measured over one test meal in 69 studies and across multiple test meals in 14 studies. Studies also used various types of food to measure EI. Overall, snack foods were the most popular EI measure ($n = 29$). Multiple food items ($n = 21$), pasta ($n = 8$), cookies ($n = 5$), ice cream ($n = 5$), popcorn ($n = 3$), sandwiches ($n = 3$), vending machines ($n = 2$), beef casserole ($n = 2$), risotto ($n = 1$), pizza ($n = 1$), milkshake ($n = 1$), Boost (a nutritionally complete liquid supplement, $n = 1$) and breakfast foods ($n = 1$) were also used.

3.2 | Study quality

Overall, studies scored relatively high on study quality for four out of five quality criteria. Studies scored low for sampling strategies because none used probability sampling and most recruited via opportunity sampling. Studies did define their target population by presenting inclusion and exclusion criteria, and some included a-priori sample size calculations. Respondents and the target population were well

FIGURE 2 Flow diagram of study selection

matched and the reasons why certain individuals were excluded were made clear. All questionnaires have been validated and in 51 studies, BMI was measured objectively in the laboratory. The measurements of EI were, for most studies, not previously validated and the most frequently used type of food was snacks ($n = 28$). The extent to which findings of eating behavior, using energy dense snacks can generalize to wider and more typical eating behavior is unknown. The majority of studies also attempted to reduce possible confounders by providing participants with a standardized breakfast, testing during normal lunch hours and keeping testing times between participants consistent.

The risk of non-response bias in studies included in this systematic review was low, no studies reported high drop-out rates. Lastly, study quality was high for the appropriateness of statistical analysis used in studies. However, in some studies, the method used to split participants into groups was a limitation. Using a median split to identify low or high scorers could have misclassified individuals and lead to null findings.¹¹ Indeed, van Strien, Herman, Anschutz, Engels and de Weerth¹¹⁹ found that if a median split was used, their results would have become non-significant. Additionally, in Dalton, Hollingworth, Blundell and Finlayson,⁶⁰ 40% of the participants were unclassified based on their SQ score. Therefore, any findings cannot be generalized to a wider population if almost half of the sample could not be classified into a level of satiety responsiveness.

3.3 | Study findings

3.3.1 | Intuitive eating

A meta-analysis of 2 studies ($n = 262$) found no significant correlation between intuitive eating and EI ($r = 0.32$ [$-0.30, 2.00$],

$p = 0.096$). A meta-analysis of 3 studies ($n = 317$) found that intuitive eating was negatively correlated with BMI ($r = -0.26$ [$-0.45, -0.04$], $p = 0.036$, Figure S1) and this represents a moderate effect size. Heterogeneity was low ($I^2 = 0.0\%$, $Q = 1.66$, $p = 0.436$). One study was identified as an influential case.⁵⁷ With this study removed from the meta-analysis, the overall effect size increased; however, the effect became non-significant ($r = -0.30$ [$-0.86, 0.58$], $p = 0.156$). The trim-and-fill method suggested no missing studies.

3.3.2 | Mindful eating

Anderson, Reilly, Schaumberg, Dmochowski and Anderson⁵⁸ found no significant association between mindful eating and EI ($r = 0.15$) or mindful eating and BMI ($r = 0.01$).

3.3.3 | Satiety responsiveness

Only one effect size was available; therefore, meta-analysis could not be conducted. However, of the four studies that measured satiety responsiveness, three reported that higher satiety responsiveness as associated with reduced EI^{60,62,63} and one reported no significant effect.⁶² A meta-analysis of 3 studies ($n = 197$) found a moderate negative correlation between satiety responsiveness and BMI ($r = -0.18$ [$-0.31, -0.04$], $p = 0.031$, Figure S2). Heterogeneity was low ($I^2 = 0.0\%$, $Q = 0.41$, $p = 0.815$). No studies were identified as outliers or influential cases. Two missing studies were suggested to the right (adjusted $r = -0.15$ [$-0.24, -0.06$], $p = 0.009$).

TABLE 1 Table of questionnaires included and their abbreviations

Questionnaire	Abbreviation	Subscales	Reference paper
Intuitive Eating Scale	IES	Reliance On Hunger and Satiety (RHSC), Unlimited Permission to Eat (UPE), Eating for Physical Rather Than Emotional Reasons (EPR)	Tylka ³⁹
Intuitive Eating Scale-2	IES-2	RHSC, UPE, EPR, Body-Food Choice Congruence (B-FCC)	Tylka and Kroon Van Diest ⁴⁰
Mindful Eating Questionnaire	MEQ	Disinhibition, Awareness, External Cues, Emotional Response, Distraction	Framson, Kristal, Schenk, Littman, Zeliadt and Benitez ⁴¹
Satiety Quotient	SQ	Desire To Eat, Hunger, Fullness, Satiety, Prospective Food Consumption (PFC)	Green, Delargy, Joanes and Blundell ⁴²
Adult Eating Behavior Questionnaire	AEBQ	Hunger (H), Food Responsiveness (FR), Emotional Over-Eating (EOE), Enjoyment of Food (EF), Satiety Responsiveness (SR), Emotional Under-Eating (EUE), Food Fussiness (FF), Slowness in Eating (SE)	Hunot, Fildes, Croker, Llewellyn, Wardle and Beeken ⁴³
Three Factor Eating Questionnaire	TFEQ	Disinhibition, Dietary Restraint, Susceptibility to Hunger	Stunkard and Messick ⁵
Restraint Scale	RS		Herman and Mack ⁴⁴
Revised Restraint Scale	RRS		Herman, Polivy and Silver ⁴⁵
Dutch Eating Behavior Questionnaire	DEBQ	Restraint Eating, Emotional Eating, External Eating	van Strien, Frijters, Bergers and Defares ⁴⁶
Control of Eating Questionnaire	COEQ	Craving Control, Positive Mood, Craving for Sweet, Craving for Savory	Dalton, Finlayson, Blundell and Hill ⁴⁷
Power of Food Scale	PFS	Food Available, Food Present, Food Tasted	Lowe, Butryn, Didie, Annunziato, Thomas, Crerand, Ochner, Coletta, Bellace and Wallaert ⁴⁸
Food Craving Inventory	FCI	High fats, Sweets, Carbohydrates, Fast-Food Fats and Subjective, Behavioral	White, Whisenhunt, Williamson, Greenway and Netemeyer ⁴⁹
Binge Eating Scale	BES		Gormally, Black, Daston and Rardin ²¹
Eating Disorders Examination Questionnaire	EDE-Q	Restraint, Eating Concern, Shape Concern, Weight Concern	Fairburn, Cooper and O'Connor ⁵⁰
Eating Disorders Assessment Scale	EDAS	Restrained Eating, Binge Eating, Purging, Preoccupation with Body Image, and Body Weight.	Akkermann, Herik, Aluoja and Järv ⁵¹
Eating Disorders Diagnostics Scale	EDDS	Anorexia Nervosa, Bulimia Nervosa, Binge Eating Disorder, Noneating Disordered	Stice, Telch and Rizvi ⁵²
Eating Disorders Inventory	EDI-2	EBT related subscales: Drive for Thinness, Bulimia, Body Dissatisfaction	Garner ⁵³
Eating Self-Efficacy	WEL	Negative Emotions, Availability, Social Pressure, Physical Discomfort, Positive Activities	Clark, Abrams, Niaura, Eaton and Rossi ⁵⁴
Reward-based Eating Drive Questionnaire	RED-9, RED-13, RED-X5	Loss of Control Over Eating, Lack of Satiety, Preoccupation with Food	Vainik, Eun Han, Epel, Janet Tomiyama, Dagher and Mason ⁵⁵
Yale Food Addiction Scale-2	YFAS-2		Gearhardt, Corbin and Brownell ⁵⁶

3.3.4 | Restraint

Meta-analysis of 49 studies ($n = 2,594$) showed a small but significant, negative correlation between restraint and EI (52 study arms, $r = -0.07$, $[-0.12, -0.01]$, $p = 0.015$, Figure 3). Heterogeneity was moderate ($I^2 = 41.8\%$, $Q = 87.70$, $p = 0.001$). Four outliers were identified^{68,74,78,79} and the one-study-removed procedure identified

one influential case.⁷⁴ With these outliers removed, the effect size slightly increased ($r = -0.09$ $[-0.14, -0.05]$, $p < 0.001$). Heterogeneity was low ($I^2 = 10.2\%$) and the Q test was non-significant ($Q = 52.32$, $p = 0.275$). The funnel plot did not suggest any evidence of publication bias (Figure S3), no missing studies were suggested, and Egger's test was non-significant ($p = 0.680$). The association between restraint and EI was influenced by the type of questionnaire used to

TABLE 2 Eating behavior traits: Summary of included studies

Eating behavior trait	Questionnaire used to assess eating behavior trait	Cross-sectional study reference	Associations with	
			EI	BMI
Intuitive eating (IE)	IES	Anderson, Schaumberg, Anderson and Reilly ⁵⁷	NS and ↑	↓
	IES	Anderson, Reilly, Schaumberg, Dmochowski and Anderson ⁵⁸	NS	NS
	IES-2	Ruzanska and Warschburger ⁵⁹	NS and ↑	↓
	Total		3 NS 2 ↑	1 NS 2 ↓
Mindful eating	MEQ	Anderson, Reilly, Schaumberg, Dmochowski and Anderson ⁵⁸	NS	NS
	Total		1 NS	1 NS
Satiety Responsiveness	SQ	Dalton, Hollingworth, Blundell and Finlayson ⁶⁰	↓	NS
	SQ desire to eat	Drapeau, Blundell, Therrien, Lawton, Richard and Tremblay ⁶¹	NS	NS
	SQ for PFC		NS	NS
	SQ for fullness		↓	NS
	SQ for hunger		NS	NS
	SQ	Drapeau, Jacob, Panahi and Tremblay ⁶²	NS	NS
AEBQ		Zuraikat, Roe, Smethers, Reihart and Rolls ⁶³	↓	NS*
	Total		4 NS 3 ↓	7 NS
Dietary restraint	TFEQ	Anderson, Reilly, Schaumberg, Dmochowski and Anderson ⁵⁸	NS	↑
	TFEQ	Ard, Desmond, Allison and Conway ⁶⁴	↓	
	TFEQ	Bellisle, Dalix, Airinei, Hercberg and Péneau ⁶⁵	NS	NS
	TFEQ	Bryant, Caudwell, Blundell, Hopkins and King ⁶⁶	NS	
	TFEQ	Chambers and Yeomans ⁶⁷	NS	NS
	RS	Coelho, Polivy, Herman and Pliner ⁶⁸	↑	↑
	RRS	Cools, Schotte and McNally ⁶⁹	↓	
	RS	de Witt Huberts, Evers and de Ridder ⁷⁰ study 1	NS	↑
	RS	de Witt Huberts, Evers and de Ridder ⁷⁰ study 2	NS	↑
	RS	de Witt Huberts, Evers and de Ridder ⁷⁰ study 3	NS	NS
	DEBQ	Dweck, Jenkins and Nolan ⁷¹		↑
	RRS	Fedoroff, Polivy and Herman ⁷²	↓	
	TFEQ	Finlayson, Blundell, Bordes, Griffioen-Roose and de Graaf ⁷³	NS	NS
	DEBQ	Finlayson et al. ⁷³	NS and ↑	
	RS	Guerrieri, Nederkoorn, Schrooten, Martijn and Jansen ⁷⁴	↑	↑
	TFEQ	Haynes, Lee and Yeomans ⁷⁵	↓	NS
	DEBQ	Herhaus and Petrowski ⁷⁶	NS	NS
	RS	Herman and Mack ⁴⁴	↑ and ↓	NS
	RS	Herman, Polivy and Silver ⁴⁵	↑	
	DEBQ	Higgs, Williamson and Attwood ⁷⁷	NS	NS
	TFEQ	Hofmann and Friese ⁷⁸	↓	
	DEBQ	Hopkins et al. ¹¹³	↓	NS
	DEBQ	Jansen ⁷⁹ study 1	↑	NS
		Jansen ⁷⁹ study 2	↑	↑
	RS	Jansen, Merkelbach, Oosterlaan, Tuiten and Van Den Hout ⁸⁰	NS	↑

(Continues)

TABLE 2 (Continued)

Eating behavior trait	Questionnaire used to assess eating behavior trait	Cross-sectional study reference	Associations with	
			EI	BMI
	RS	Lattimore and Maxwell ⁸¹	NS	
	TFEQ	Martin, Williamson, Geiselman, Walden, Smeets, Morales and Redmann Jr ⁸²	NS	NS
	TFEQ	McNeil, Lamothe, Cameron, Riou, Cadieux, Lafreniere, Goldfield, Willbond, Prud'homme and Doucet ⁸³	NS	
	RRS	Myhre, Buchwald, Kratz, Goldberg, Polivy, Melhorn, Schur and Cummings ⁸⁴	NS	NS
	DEBQ	Oliver, Wardle and Gibson ⁸⁵	NS	
	DEBQ	Ouwens, van Strien and van der Staak ⁸⁶	NS	
	TFEQ	Ouwens, van Strien and van der Staak ⁸⁶	NS	
	RS	Ouwens, van Strien and van der Staak ⁸⁶	NS	
	TFEQ	Peluso ⁸⁷	NS	NS
	TFEQ	Rideout, McLean and Barr ⁸⁸	↓	NS
	DEBQ	Robinson and Haynes ¹¹⁵	NS	NS
	TFEQ	Rolls, Castellanos, Shide, Miller, Pelkman, Thorwart and Peters ⁸⁹	NS	NS
	TFEQ	Ruddock, Field and Hardman ⁹⁰	↓	NS
	TFEQ	Schoch and Raynor ⁹¹	↓	↑
	RRS	Schotte, Cools and McNally ⁹²	NS	↑
	RS	Shapiro and Anderson ⁹³	NS	
	DEBQ	Sim, Lee and Cheon ⁹⁴	NS	
	TFEQ	Smith, Geiselman, Williamson, Champagne, Bray and Ryan ⁹⁵	NS	↑
	RS and TFEQ	Stice, Fisher and Lowe ⁹⁶ study 1	NS	NS
	TFEQ and EDEQ-R	Stice, Fisher and Lowe ⁹⁶ study 2	NS	
	TFEQ	Stice, Sysko, Roberto and Allison ⁹⁷	NS	
	TFEQ	Stinson, Votruba, Venti, Krakoff, Gluck and Perez ⁹⁸	↓	NS
	DEBQ	van Strien and Ouwens ⁹⁹	NS	
	TFEQ	Visona and George ¹⁰⁰	NS	NS
	DEBQ	Wallis and Hetherington ¹⁰¹	NS	NS
	DEBQ	Wallis and Hetherington ¹⁰²	↓	↑
	DEBQ	Wardle and Beales ¹⁰³	↑	NS
	TFEQ	Westenhoefer, Broeckmann, Münch and Pudel ¹⁰⁴	NS	↑
	RRS	Westenhoefer, Broeckmann, Münch and Pudel ¹⁰⁴	↑	↑
	TFEQ	Yeomans and Coughlan ¹⁰⁵	NS	NS
	TFEQ	Yeomans, Tovey, Tinley and Haynes ¹⁰⁶		NS
	TFEQ	Zambrowicz, Schebendach, Sysko, Mayer, Walsh and Steinglass ¹⁰⁷	↓	
	EDE-2	Zambrowicz, Schebendach, Sysko, Mayer, Walsh and Steinglass ¹⁰⁷	NS	
		Total	36 NS	24
			9 ↑	NS
			13 ↓	14 ↑

TABLE 2 (Continued)

Eating behavior trait	Questionnaire used to assess eating behavior trait	Cross-sectional study reference	Associations with	
			EI	BMI
Control of eating	COEQ	Dalton, Finlayson, Blundell and Hill ⁴⁷	↓	↓
	Craving control		↓	↓
	Positive mood		↓	↓
	Lack of Craving for sweet ^a			
	Total		3 ↓	3 ↓
Hedonic hunger/food reward sensitivity	PFS	Appelhans, Liebman, Woolf, Pagoto, Schneider and Whited ¹⁰⁸	NS	NS
	PFS	Ely, Howard and Lowe ¹⁰⁹	NS and ↑	↑
	PFS	Finlayson et al. ⁷³	NS	NS
	PFS	Nolan-Poupert, Veldhuizen, Geha and Small ¹¹⁰	NS	
	Total		4 NS	2 NS
Food craving	FCI	Martin, O'Neil, Tollefson, Greenway and White ¹¹¹	↑	
	Total		1 ↑	
Dietary disinhibition	TFEQ	Ard, Desmond, Allison and Conway ⁶⁴	NS	
	TFEQ	Bryant, Caudwell, Blundell, Hopkins and King ⁶⁶	NS	
	TFEQ	Chambers and Yeomans ⁶⁷	NS and ↑	
	TFEQ	Epstein, Lin, Carr and Fletcher ¹¹²	↑	↑
	TFEQ	Finlayson, Blundell, Bordes, Griffioen-Roose and de Graaf ⁷³	NS and ↑	↑
	TFEQ	Haynes, Lee and Yeomans ⁷⁵	↑	NS
	TFEQ	Higgs, Williamson and Attwood ⁷⁷	NS	NS
	TFEQ	Martin, Williamson, Geiselman, Walden, Smeets, Morales and Redmann Jr. ⁸²		NS
	TFEQ	McNeil, Lamothe, Cameron, Riou, Cadieux, Lafreniere, Goldfield, Willbond, Prud'homme and Doucet ⁸³	NS	
	DEBQ	Ouwens, van Strien and van der Staak ⁸⁶	↑	
	TFEQ	Ouwens, van Strien and van der Staak ⁸⁶	↑	
	TFEQ	Ruddock, Field and Hardman ⁹⁰	↑	NS
	TFEQ	Smith, Geiselman, Williamson, Champagne, Bray and Ryan ⁹⁵	↑	↑
	TFEQ	Stinson, Votruba, Venti, Krakoff, Gluck and Perez ⁹⁸	NS	↑
	TFEQ	Westenhoefer, Broeckmann, Münch and Pudel ¹⁰⁴	↑	↑
	TFEQ	Yeomans and Coughlan ¹⁰⁵	NS	↑
	TFEQ	Yeomans, Tovey, Tinley and Haynes ¹⁰⁶	↑	↑
	TFEQ	Zambrowicz, Schebendach, Sysko, Mayer, Walsh and Steinglass ¹⁰⁷	NS	
	Total		9 NS	4 NS
			10 ↑	7 ↑
Susceptibility to Hunger	TFEQ	Bryant, Caudwell, Blundell, Hopkins and King ⁶⁶	↑	
	TFEQ	Finlayson, Blundell, Bordes, Griffioen-Roose and de Graaf ⁷³	NS	NS
	TFEQ	McNeil, Lamothe, Cameron, Riou, Cadieux, Lafreniere, Goldfield, Willbond, Prud'homme and Doucet ⁸³	↑	
	TFEQ	Stinson, Votruba, Venti, Krakoff, Gluck and Perez ⁹⁸	NS	↑
	TFEQ	Westenhoefer, Broeckmann, Münch and Pudel ¹⁰⁴	↑	↑

(Continues)

TABLE 2 (Continued)

Eating behavior trait	Questionnaire used to assess eating behavior trait	Cross-sectional study reference	Associations with	
			EI	BMI
	TFEQ	Zambrowicz, Schebendach, Sysko, Mayer, Walsh and Steinglass ¹⁰⁷	NS	
		Total	3 NS 3 ↑	1 NS 2 ↑
External eating	DEBQ	Dweck, Jenkins and Nolan ⁷¹		NS
	DEBQ	Finlayson et al. ⁷³	↑	NS
	DEBQ	Hopkins, Michalowska, Whybrow, Horgan and Stubbs ¹¹³	NS	NS
	DEBQ	Kakoschke, Kempes and Tiggemann ¹¹⁴	↑	
	DEBQ	Robinson and Haynes ¹¹⁵	NS	NS
	DEBQ	van Strien, Donker and Ouwens ¹¹⁶	↑	
	DEBQ	van Strien and Ouwens ⁹⁹	NS	
		Total	3 NS 3 ↑	4 NS
Emotional eating	DEBQ	Dweck, Jenkins and Nolan ⁷¹	NS	NS
	DEBQ	Evers, de Ridder and Adriaanse ¹¹⁷ study 3	NS	NS
	DEBQ	Evers, de Ridder and Adriaanse ¹¹⁷ study 4	NS	NS
	DEBQ	Evers, de Ridder and Adriaanse ¹¹⁷ study 5	NS	NS
	DEBQ	Finlayson et al. ⁷³	NS and ↑	↑
	DEBQ	Hopkins, Michalowska, Whybrow, Horgan and Stubbs ¹¹³	NS	NS
	DEBQ	Oliver, Wardle and Gibson ⁸⁵	NS	
	DEBQ	Raspopow, Abizaïd, Matheson and Anisman ¹¹⁸	NS	NS*
	DEBQ	Robinson and Haynes ¹¹⁵	NS	NS
	DEBQ	van Strien, Donker and Ouwens ¹¹⁶	↑	
	DEBQ	van Strien, Herman, Anschutz, Engels and de Weerth ¹¹⁹		↑
	DEBQ	van Strien and Ouwens ⁹⁹	↑	
	DEBQ	Wallis and Hetherington ¹⁰¹	NS	NS
	DEBQ	Wallis and Hetherington ¹⁰²		NS
		Total	10 NS 3 ↑	9 NS 2 ↑
Binge eating	BES	Alger, Seagle and Ravussin ¹²⁰		
	EDAS	Arumae, Kreegipuu and Vainik ¹²¹	↑	NS
	BES	Dalton, Blundell and Finlayson ¹²²	↑	NS*
	BES	Dalton, Blundell and Finlayson ¹²³	↑	NS*
	BES	Finlayson, Arlotti, Dalton, King and Blundell ⁴	↑	↑
	BES	Finlayson et al. ⁷³	NS	↑
	BES	Nasser, Gluck and Geliebter ¹²⁴	NS	NS
	BES	Stinson, Votruba, Venti, Krakoff, Gluck and Perez ⁹⁸	NS	↑
		Total	3 NS 4 ↑	4 NS 3 ↑
Eating disorders	EDDS	Anderson, Reilly, Schaumberg, Dmochowski and Anderson ⁵⁸	NS	↑
	EDI-2	Long, Meyer, Leung and Wallis ¹²⁵	NS	
		Total	2 NS	1 ↑
Food addiction	YFAS 2.0	Schulte, Sonnevile and Gearhardt ¹²⁶	NS	NS
		Total	1 NS	1 NS

TABLE 2 (Continued)

Eating behavior trait	Questionnaire used to assess eating behavior trait	Cross-sectional study reference	Associations with	
			EI	BMI
Eating self-efficacy	WEL	Vijayvargiya, Chedid, Wang, Atieh, Maselli, Burton, Clark, Acosta and Camilleri ¹²⁷	↓	
		Total	1 ↓	
Reward-related eating	RED-X5	Vainik, Eun Han, Epel, Janet Tomiyama, Dagher and Mason ⁵⁵	↑	↑
	RED-9			
	RED-13	Total	1 ↑	1 ↑
Total scores	TFEQ	Bellisle and Dalix ¹²⁸	NS	NS
	DEBQ	Bellisle and Dalix ¹²⁸	NS	NS
	TFEQ	Nolan-Poupart, Veldhuizen, Geha and Small ¹¹⁰	NS	
	Total		3 NS	2 NS

Note: blank = outcome was measured but the data was not available as authors were contacted but did not reply, NS = non-significant, NS* = significant association with body fat or body weight, ↑ = significance positive association, ↓ = significant negative association, ^a= reverse coded. If two results are presented for one outcome (e.g., NS and ↑), the effect differed depending on the group or condition tested.

measure restraint ($p < 0.001$, Table S3). For the TFEQ, RRS and EDE-Q, restraint was negatively correlated with EI. Whereas, for the RS and DEBQ, restraint was positively correlated with EI. A random-effects meta-regression was undertaken to test for differences in effect sizes between questionnaires used to measure restraint and EI. The meta-regression was significant ($p < 0.05$); however, TFEQ was the only variable that was significantly associated with EI ($p < 0.01$). Further subgroup analyses revealed that the effect of restraint on EI was not significantly influenced by the number of test meals (one vs. multiple test meals, $p = 0.103$) or BMI group (healthy, overweight, obese, $p = 0.553$). Lastly, the association between restraint and EI was influenced by a preload. Consuming a preload was associated with increased EI, while not consuming a preload was associated with decreased EI ($p = 0.040$, see Table S4).

Meta-analysis of 32 studies ($n = 1869$) showed that restraint was positively correlated with BMI, and this effect was moderate ($r = 0.20$ [0.12, 0.28], $p < 0.001$, Figure 4). Heterogeneity was moderate ($I^2 = 61.2\%$, $Q = 79.86$, $p < 0.001$). Four outliers were identified.^{58,79,89,100} Without these studies included, there was no change in the overall effect size ($r = 0.20$ [0.13, 0.26], $p < 0.001$). However, heterogeneity decreased ($I^2 = 34.8\%$, $Q = 41.38$, $p = 0.038$). Using the leave-one-out method, no studies were identified as influential. The funnel plot (Figure S4) suggested little evidence of publication bias, no missing studies were identified, and Egger's test was non-significant ($p = 0.753$). The effect of restraint on BMI did not depend on the type of questionnaire used to measure restraint ($p = 0.103$).

3.3.5 | Control of eating

Dalton, Finlayson, Blundell and Hill⁴⁷ found that craving control and positive mood were negatively associated with EI ($r = -0.20$, $p < 0.05$, $r = -0.21$, $p < 0.05$) and BMI ($r = -0.31$, $p < 0.001$, $r = -0.23$, $p < 0.01$) respectively, whereas craving for sweet foods

was positively associated with EI ($r = 0.40$, $p < 0.001$) and BMI ($r = 0.23$, $p < 0.01$).

3.3.6 | Hedonic hunger

A meta-analysis of 4 studies ($n = 183$) found no significant correlation between hedonic hunger and EI ($r = 0.13$ [-0.08, 0.33], $p = 0.147$). Additionally, a meta-analysis of 2 studies ($n = 92$) also found a non-significant association between hedonic hunger and BMI ($r = 0.05$ [-1.00, 1.00], $p = 0.868$).

3.3.7 | Food craving

Martin et al.¹¹¹ reported that scores on the FCI were associated with increased total EI ($r = 0.22$, $p < 0.05$); however, there was no data for the effect of FCI on BMI.

3.3.8 | Susceptibility to hunger

A meta-analysis of 6 studies ($n = 362$) found susceptibility to hunger was positively associated with EI, and this effect was moderate-to-large ($r = 0.27$ [0.19, 0.35], $p < 0.001$, see Figure S5). Heterogeneity was low ($I^2 = 0.0\%$, $Q = 2.05$, $p = 0.843$). No outliers or influential cases were identified. Three missing studies were identified to the left (adjusted $r = 0.22$ [0.13, 0.31], $p < 0.001$). A meta-analysis of 3 studies ($n = 245$) found a moderate positive correlation between susceptibility to hunger and BMI ($r = 0.20$ [0.11, 0.28], $p = 0.011$; Figure S6). Heterogeneity was small ($I^2 = 0.0\%$, $Q = 0.20$, $p = 0.903$). No outliers or influential cases were identified. Two missing studies were identified to the left (adjusted $r = 0.17$ [0.11, 0.23], $p = 0.002$).

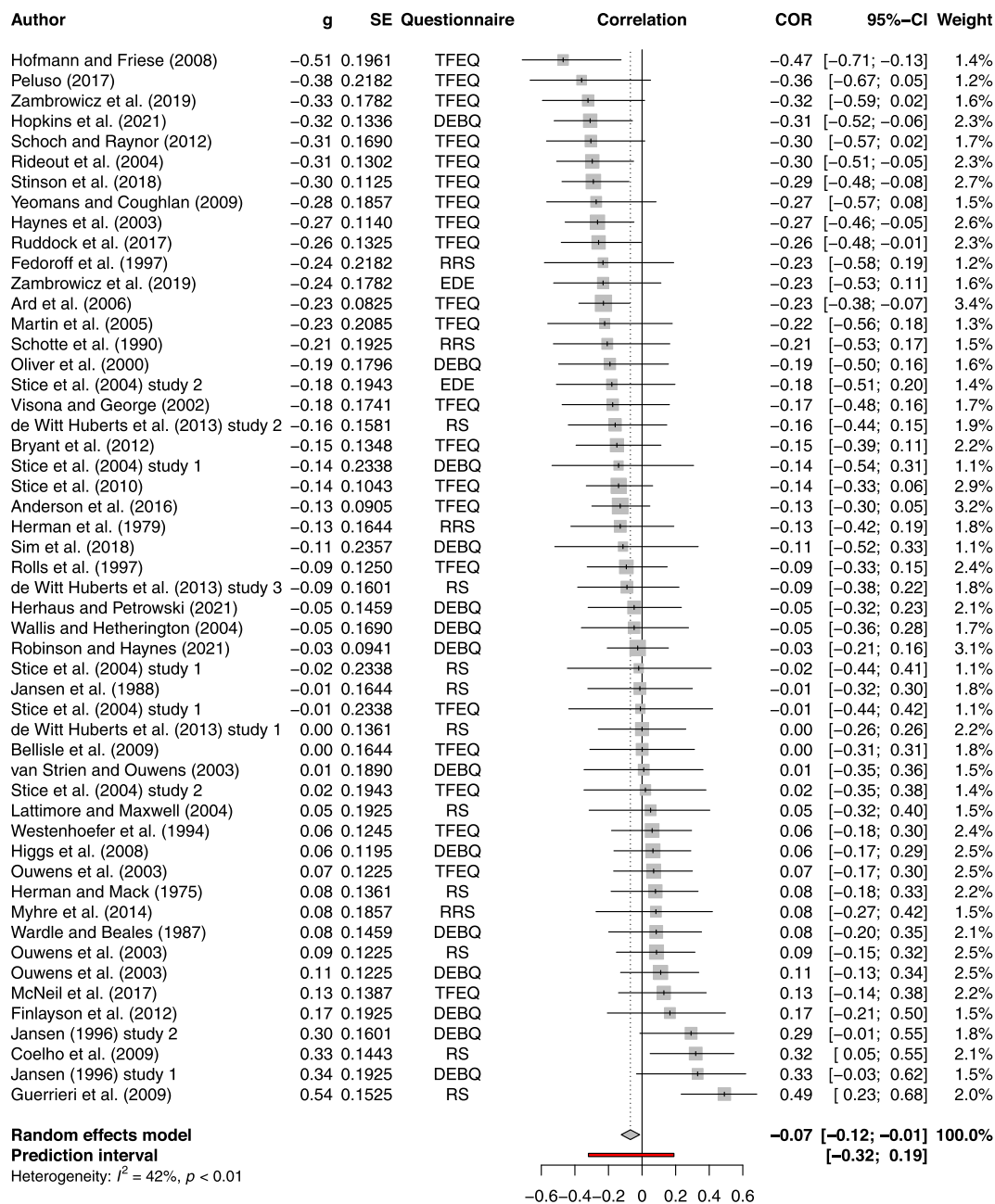


FIGURE 3 Forest plot of the effect of restraint on EI

3.3.9 | External eating

A meta-analysis of 6 studies ($n = 583$) found that external eating was positively correlated with EI, and this effect was moderate ($r = 0.17$ [0.07, 0.27], $p = 0.007$, see Figure S7). Heterogeneity was low ($I^2 = 0.0\%$, $Q = 4.46$, $p = 0.485$). Two influential studies were identified.^{115,116} With these studies removed, the effect size slightly increased ($r = 0.18$ [0.01, 0.34], $p = 0.044$). Heterogeneity was low ($I^2 = 0.0\%$, $Q = 2.21$, $p = 0.531$). One missing study was identified to the left (adjusted $r = 0.16$ [0.06, 0.26], $p = 0.008$). A meta-analysis of 4 studies ($n = 269$) found no significant correlation between external eating and BMI ($r = -0.08$ [-0.28, 0.12], $p = 0.285$).

3.3.10 | Emotional eating

A meta-analysis of 10 studies ($n = 608$) found a small-to-moderate, positive correlation between emotional eating and EI ($r = 0.12$ [0.00, 0.24], $p = 0.042$, see Figure S8). Heterogeneity was moderate ($I^2 = 32.1\%$, $Q = 13.26$, $p = 0.151$). No influential studies were identified. The funnel plot did not suggest any publication bias (Figure S9), one missing study was identified to the left (adjusted $r = 0.11$ [-0.02, 0.23], $p = 0.088$) and the Egger's regression test was non-significant ($p = 0.800$). The effect of emotional eating on EI was not influenced by the number of test meals ($p = 0.342$). A meta-analysis of 10 studies ($n = 737$) found that emotional eating

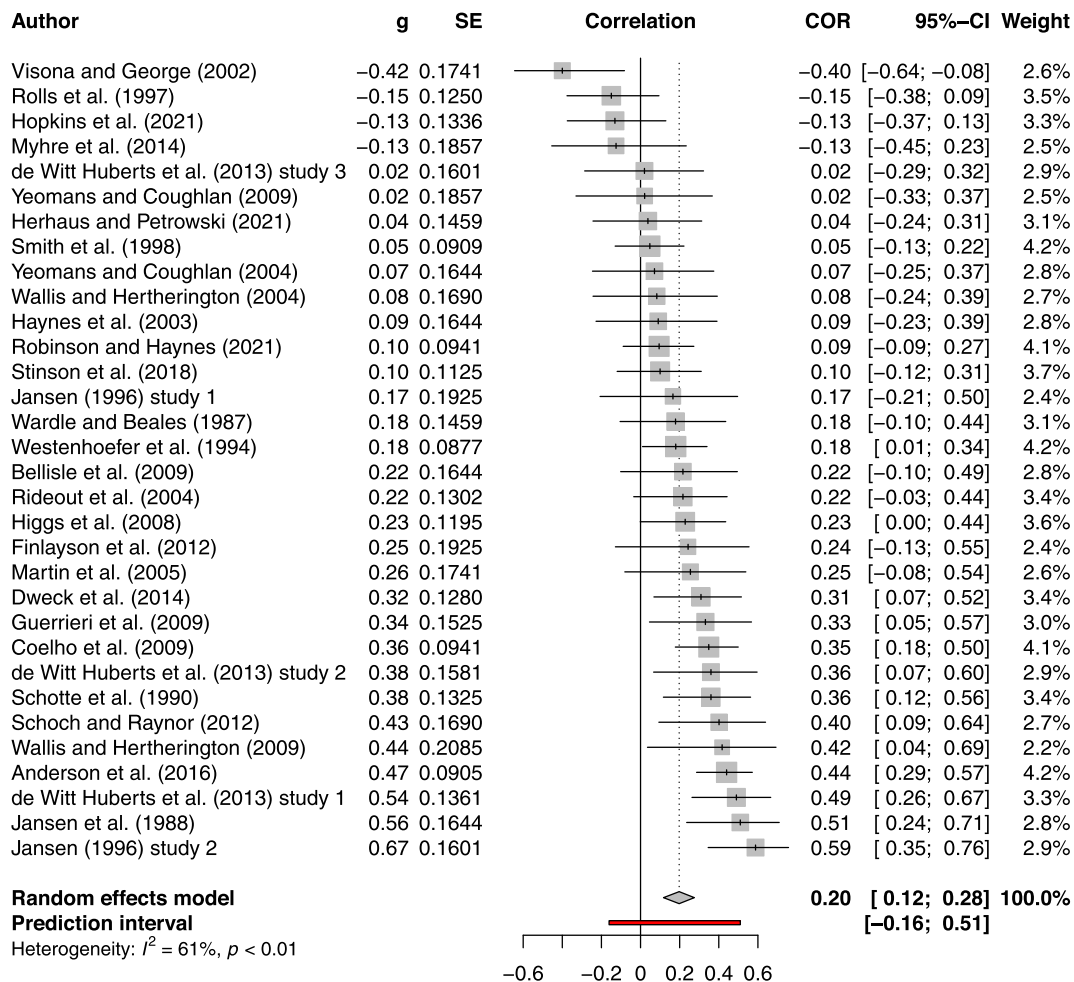


FIGURE 4 Forest plot of the effect of restraint on BMI

was positively correlated with BMI ($r = 0.19$ [0.13, 0.25] $p < 0.001$). This effect was moderate (Figure S10). Heterogeneity was low ($I^2 = 0.0\%$, $Q = 5.17$, $p = 0.819$). No influential cases were identified. The funnel plot did not suggest any publication bias (Figure S11), No missing studies were suggested, and the Egger's test was non-significant ($p = 0.860$).

3.3.11 | Disinhibition

A meta-analysis of 14 studies ($n = 1,172$) found a moderate positive correlation between disinhibition and EI ($r = 0.19$ [0.14, 0.24], $p < 0.001$, see Figure S12). Heterogeneity was low ($I^2 = 0.0\%$, $Q = 9.74$, $p = 0.715$). Influence diagnostics identified one influential case.¹¹² With this study removed, the overall effect size increased ($r = 0.21$ [0.14, 0.27], $p < 0.001$). Heterogeneity was low ($I^2 = 0.0\%$, $Q = 8.88$, $p = 0.713$). The funnel plot showed little evidence of publication bias (Figure S13), one missing study was suggested to the right (adjusted $r = 0.20$ [0.14, 0.25], $p < 0.001$), and Egger's test was non-significant ($p = 0.973$). The effect of disinhibition on EI was not influenced by the number of test meals ($p = 0.341$). Meta-analysis of

8 studies ($n = 618$) showed a moderate-to-large, positive correlation between disinhibition and BMI ($r = 0.28$ [0.19, 0.38], $p < 0.001$, Figure S14). Heterogeneity was low ($I^2 = 13.8\%$, $Q = 8.12$, $p = 0.322$). One influential case was identified.⁹⁵ Without this study included, there was a small decrease in the overall effect size ($r = 0.25$ [0.16, 0.33], $p < 0.001$). Heterogeneity was low ($I^2 = 0.0\%$, $Q = 3.68$, $p = 0.720$). No missing studies were suggested.

3.3.12 | Binge eating

A meta-analysis of 7 studies ($n = 249$) found a moderate, positive correlation between binge eating and EI ($r = 0.26$ [0.08, 0.43], $p < 0.001$, see Figure S15). Heterogeneity was low ($I^2 = 0.0\%$, $Q = 3.68$, $p = 0.720$). Two influential studies were identified.^{98,123} With these studies removed, the overall effect size increased slightly ($r = 0.28$ [0.11, 0.43], $p = 0.010$). Heterogeneity was low ($I^2 = 0.0\%$, $Q = 2.02$, $p = 0.731$). Two missing studies were suggested to the left (adjusted $r = 0.17$ [-0.04, 0.37], $p = 0.098$). A meta-analysis of 7 studies ($n = 277$) found a moderate positive correlation between binge eating and BMI ($r = 0.21$ [0.07, 0.34],

$p = 0.011$, see Figure S16). Heterogeneity was low ($I^2 = 0.0\%$, $Q = 5.30$, $p = 0.506$). No influential studies were identified. One missing study was identified to the right (adjusted $r = 0.23$ [0.09, 0.36], $p = 0.006$).

3.3.13 | Disordered eating

A meta-analysis of 2 studies ($n = 152$) was conducted to test the correlation between eating disorder symptomology and EI. The analysis was non-significant ($r = -0.17$ [-0.98, 0.96], $p = 0.499$).

Only one effect size was available to test the effect of eating disorders on BMI; therefore, a meta-analysis could not be conducted. However, Anderson, Reilly, Schaumberg, Dmochowski and Anderson⁵⁸ did report that increased scores on the EDSS were associated with increased BMI ($r = 0.40$, $p < 0.05$). The YFAS 2.0 was not significantly associated with EI or BMI.¹²⁶

3.3.14 | Other EBT

Eating self-efficacy was negatively associated with EI ($r = -0.26$, $p < 0.05$).¹²⁷ Three measures of reward-related eating were positively correlated with EI (RED-X5: $r = 0.31$, $p < 0.05$, RED-9: $r = 0.35$, $p < 0.05$, RED-13: $r = 0.32$, $p < 0.05$) and BMI (RED-X5: $r = 0.18$, $p < 0.05$, RED-9: $r = 0.17$, $p < 0.06$, RED-13: $r = 0.18$, $p < 0.05$).

3.3.15 | Summary of meta-analyses findings

Figure 5 displays the overall effect sizes for each EBT on EI and BMI. A positive effect size indicates that the EBT is positively correlated with EI or BMI. A negative effect size indicates that the EBT is negatively correlated with EI or BMI. Intuitive eating and eating disorder symptomology are not displayed in Figure 5 due to the small number of studies included in these meta-analyses and

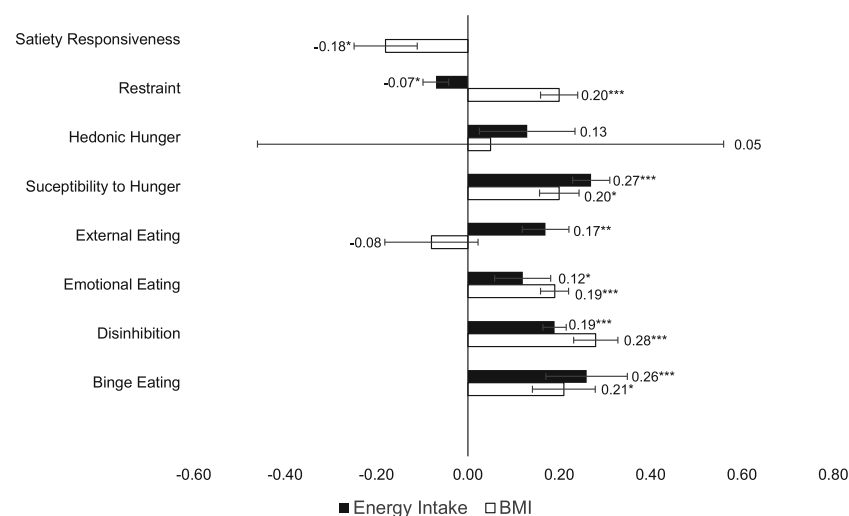


FIGURE 5 Summary of meta-analyses findings. Note: black line = Energy Intake, white line with black border = BMI, error bars indicate standard error, * $p < 0.05$, ** $p < 0.01$, *** $p < 0.001$.

the large variability in their correlations with EI and BMI. Figure 6 displays the effect sizes for the subgroup analysis testing the correlation between restraint and EI influenced by the questionnaire used to measure restraint. Error bars in both figures reflect standard error.

4 | DISCUSSION

The aims of this systematic review and meta-analyses were to (1) identify which measures are used to capture EBT, (2) assess how well these measures associate with short term EI and (3), BMI, (4) and evaluate whether some EBT and questionnaires used to measure EBT are better at predicting EI or BMI than others. Sixteen EBT were identified. However, the majority of EBT included were restraint, disinhibition, emotional eating, external eating, and binge eating. Considering the >45 years of research on human eating behavior, this systematic review demonstrates that relatively few studies on EBT have been conducted in relation to indices of objectively measured short-term EI as well as long-term energy balance status (BMI). For most of the EBT

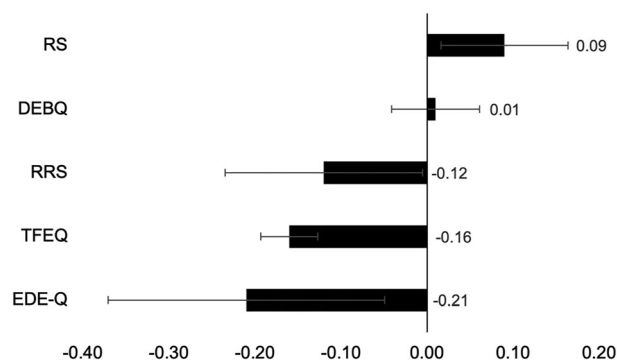


FIGURE 6 Bar graph of the subgroup analysis results, testing the correlation between restraint and EI influenced by the questionnaire used to measure restraint

identified (aside from restraint), this research has been accomplished in only a small number of studies. Additionally, the majority of traits were measured using a single questionnaire (see Table 1), which were often older measures such as TFEQ or RS. This means that there are additional, typically newer questionnaires with no research that met the inclusion criteria for this systematic review, for example, the Positive and Negative Emotional Eating Scale.¹²⁹ Future research should assess the validity of these traits in relation to EI and BMI.

Overall, the meta-analyses demonstrated that EBT do significantly predict both EI and BMI. Effect sizes were generally moderate, with some analyses reaching larger effects. Susceptibility to hunger and binge eating were the strongest predictors of EI, whereas disinhibition was the strongest predictor of BMI. Although intuitive eating was moderately correlated with BMI, this meta-analysis was based on a very small number of studies. If there are not at least two adequately powered studies per meta-analysis, there may not be enough information to contribute an accurate conclusion of evidence about that EBT.¹³⁰ Therefore, drawing conclusions about intuitive eating and satiety responsiveness requires caution. Below, the main outcomes of the systematic review are discussed.

4.1 | Restraint

Restraint as a concept relates to a cognitive intention to restrict food intake, which is not necessarily reflected in actual reduction in EI or adherence to a weight reducing diet.¹⁰³ This meta-analysis found a positive association between restraint and BMI, which is consistent with previous cross-sectional studies.^{131,132} However, negative findings between restraint and BMI have also emerged in the literature.¹³³ The finding of this systematic review could suggest that although restrained individuals attempt to restrict their food intake, increased restraint puts them at a higher risk of overeating (disinhibition), leading to a positive energy balance and consequently an increased BMI. However, the results of this systematic review do not agree with this prediction. Increased restraint was associated with decreased short-term EI. This finding is more consistent with the interpretation that people with a higher BMI invoke strategies of dietary restraint to manage their weight. Approximately 40% of the adult population report at least one weight management attempt in the preceding 12 months.¹³⁴ It is also evident from the weight management literature that the majority of weight management attempts have limited success and are subject to weight regain.¹³⁵

Previous literature examining associations between restraint and EI have also been inconsistent, which is demonstrated in this systematic review as both positive and negative associations were found between restraint and EI. Research has highlighted that the different measures used to assess restraint could be influencing the different outcomes (research question 4). Heatherton, Herman, Polivy, King and McGree¹³⁶ suggest that the TFEQ may be better able to identify individuals who are successful in restricting their food intake, whereas the RS is better able to identify individuals who are unsuccessful in dieting. Indeed, the subgroup analysis found a significant effect of

questionnaire type, such that the TFEQ was associated with decreased EI, whereas the RS was associated with increased EI (see Appendix). The EDE-Q and TFEQ had the largest effect size therefore suggesting these measures may be better at predicting EI. This analysis suggests that each questionnaire may not be measuring exactly the same construct and generates questions about which scale is best at measuring restraint. The RS, for example, could be contaminated by other constructs such as disinhibition, as items on this scale refer to overeating, for example, "Do you have feelings of guilt after overeating?" This may explain why the RS was positively associated with EI.¹⁰³ Moreover, there is also a potential need to re-evaluate what is meant by the construct of restraint. Is restraint a measure of concern controlling intake and its consequences, or could it be a measure of motivation or success in restraining intake like the TFEQ appears to measure or perhaps a combination of these considerations? There is a need to clearly define and achieve consensus about what restraint is and what it is not.

A prediction of restraint theory is that the likelihood of a binge/overeating episode should be increased after consuming a preload only in high restraint individuals. This is because dieters who have just broken their diet are predicted to subsequently overeat.^{103,137} In the current analysis, the correlation between restraint and EI was influenced by a preload such that the use of a preload was associated with increased EI, whereas no preload was associated with decreased EI (see Supporting Information). Nevertheless, Ouwens, van Strien and van der Staak⁸⁶ reported no significant effect of restraint on EI influenced by a preload. The researchers highlight that not all dieters will show this disinhibition effect; but a particular subgroup might. Restrained eaters can therefore be split into two subpopulations: successful dieters and unsuccessful dieters. Successful dieters are characterized by high restraint and low levels of tendency toward overeating. Unsuccessful dieters are characterized by high restraint and are prone to overeating, meaning they are more likely to show a disinhibition effect after a preload. Westenhoefer, Broeckmann, Münch and Pudel¹⁰⁴ provided evidence for this idea and found that overeating only occurred in participants who displayed high scores on both restraint and disinhibition, as measured by the TFEQ.

More recent research such as Bryant, Caudwell, Blundell, Hopkins and King⁶⁶ and Chambers and Yeomans⁶⁷ have tested this effect by splitting participants into four groups based on their restraint (high vs. low; HR vs. LR) and disinhibition (high vs. low; HD vs. LD) scores using the TFEQ (HD/HR, HD/LR, LD/HR, LD/LR). A limitation of the current systematic review is that effect sizes were pooled so that high restraint included high and low disinhibition and low restraint included both high and low disinhibition. By not keeping the four groups separate, the analysis may have been insensitive to the effects of differing disinhibition levels. Consequently, future research could conduct a multi-level meta-analysis of restraint on EI, which can account for the influence of other variables such as disinhibition and emotional eating. Based on these findings, one must consider that restraint itself may not be a homogenous construct. Westenhoefer, Broeckmann, Münch and Pudel¹⁰⁴ proposed that restraint can be split into rigid and flexible control, with rigid control

relating to an all-or-nothing approach. In contrast, flexible control reflects a less stringent approach to restriction of intake. These subscales could reflect successful and unsuccessful dieters and may better account for the differing effects of restraint on EI. Unfortunately, only two studies in this review^{66,104} split restraint into flexible and rigid control and therefore testing the validity of this concept is currently not possible. Overall, this systematic raises questions about the current definition of restraint and whether it should be altered. If restraint is associated with increased BMI, then attempting to restrain intake as a dietary approach to weight loss may not be effective and other approaches should be utilized.

4.2 | Emotional eating

Another interesting finding of this systematic review was that emotional eating was positively correlated with short term EI and BMI, although there were two studies in the meta-analysis that found a negative correlation between emotional eating and EI.^{71,101} The small-to-moderate effect size could have been influenced by the inclusion of only control conditions in this systematic review. Conditions that attempted to influence the emotional state of participants were excluded to reduce potential contaminants of the specific emotional eating trait effect. However, studies have shown that emotional eaters increased their food intake after a negative mood induction, compared with a neutral or positive mood induction.^{119,138} A limitation of this systematic review was that only one study presented data for the positive and negative subscales of emotional eating,¹¹⁶ and therefore the influence of positive or negative emotional eating could not be assessed. Further research should look to test systematically whether emotion valence, as well as emotion induction conditions increase EI in high emotional eaters versus low emotional eaters.

4.3 | Disinhibition

The overall finding that disinhibition was positively associated with short-term EI and BMI supports previous research^{6,9} and suggests that associations between uncontrolled eating and food intake are more consistently measured by scales capturing disinhibition, potentially because disinhibition is a 'pure' measure of uncontrolled eating. These findings suggest that increased disinhibition is an indicator of risk for potential weight gain and could be targeted in weight loss interventions characterize participants at risk of weight regain. Disinhibition could influence weight regain¹³⁹ and research has found that participants who maintained weight loss were characterized by lower disinhibition scores.¹⁴⁰ Niemeier, Phelan, Fava and Wing¹⁴¹ found that higher internal disinhibition predicted less successful weight loss and studies have consistently shown that successful weight loss is associated with a decrease in disinhibition.¹⁴²⁻¹⁴⁴ If weight loss interventions can successfully target and reduce participants' uncontrolled eating behavior (disinhibition), this approach may improve weight outcomes.

Furthermore, binge eating and susceptibility to hunger were also consistent predictors of EI and BMI and may be useful constructs to target in weight loss interventions. Assessing whether other traits are associated with behavior change is another important direction for future research. For example, studies have found that higher baseline emotional eating was associated with more weight gain over time,¹⁴⁵ meaning emotional eating could also be targeted in weight loss interventions. Mindfulness-based interventions have also been used to help participants decrease their tendency to eat in response to negative emotions.¹⁴⁶ Future research should assess which traits are prospectively associated with weight change or weight maintenance, as well as investigating the long-term efficacy of interventions utilizing EBT. Ultimately, disinhibition is a robust EBT that should be used in weight loss interventions and further research should strive to find ways to reduce levels of disinhibition in those scoring high on this subscale.

4.4 | Methodological comments

This systematic review included only laboratory-based measures of EI because there is substantial evidence that self-report measures are susceptible to misreporting.¹⁰ However, laboratory-based measures of EI are highly susceptible to experimental design and demand characteristics. For example, Long, Meyer, Leung and Wallis¹²⁵ highlight that eating in a laboratory is an unnaturalistic setting and could distract and impede a participant's focus on internal signals of hunger and satiety, which could influence their EI. Another concern relates to how well one single eating episode can generalize to usual eating behavior.⁵⁹ Snacking once in a test meal (often involving unusual foods) may not be an accurate reflection on a participant's normal EI. Fourteen studies did test EI over multiple test meals, which helps to reduce this limitation. However, there were still 68 studies that tested a single eating episode and therefore, multiple test meal methods are not commonplace in eating behavior research. There are also issues relating to the 'observer effect', whereby participants behavior is biased by the awareness that they are being observed and that they are participating in a food-related study.¹⁴⁷ Studies rarely attempt to disguise that a meal is being used to measure food consumption and this transparency may alter the way a participant eats.¹⁴ Laboratory measures of food intake may have limited generalizability to normal every day eating behavior. However, the current meta-analyses generalize over multiple test designs and test meals which helps to overcome the role of specific research designs.

Another limitation of many studies included in this systematic review is the potential for other variables measured to contaminate the EI outcome. Although studies that included potential contaminants were excluded, there were still some tasks which may have influenced the outcomes. For example, Coelho, Polivy, Herman and Pliner,⁶⁸ included a control condition that required participants to complete an arithmetic problem-solving task and a word-recall task. The researchers found that the participants could not complete the

test within the time provided and could have exposed the participants to task failure or ego threat which may have affected the participant mood/emotions.

4.5 | Conceptual comments

An important consideration of EBT is uncertainty over the extent to which individuals are capable of accurately assessing their own eating behavior, for example, emotional eating. Evers, de Ridder and Adriaanse¹¹⁷ suggests a 'triple recall bias', whereby people are generally unable to perceive their own behavior, they underreport their EI and personality disturbances, and retrospective emotional ratings are known to be highly sensitive to recall bias. Consequently, questionnaires that measure emotional eating are asking participants to recall their negative or positive emotions, food intake and association between both, all three of which may be biased. It is therefore possible that in some populations, for example, the elderly and young children, recall methods may not yield accurate findings and as such, should not be used. However, recommendations for specific population where EBT assessments should not be measured is beyond the scope of this analysis. The triple recall bias can also be extended to other psychological EBT, which raises concerns over their construct validity and questions whether EBT measuring what they were designed to measure? Interestingly, new developments in real time digital tracking of energy balance behaviors,¹⁴⁸⁻¹⁵² digital ecological momentary assessments and mobile video recording¹⁵³ could be a new avenue for more ecological assessments of EI to capture EBT.

Most studies test the validity of EBT against very short-term EI, often over one test day. In order to relate EBT to long-term outcomes, EI and BMI need to be measured longitudinally. This also holds true for studies that aim to assess how EBT change in weight management interventions. In the short term, EBT are not expected to change because they are long-term processes. Therefore, to examine how EBT are associated with behavior change, they also need to be measured over a longer period of time.

5 | CONCLUSIONS

The outcome of this review has demonstrated that many EBT are associated with short-term EI and BMI, with disinhibition, susceptibility to hunger and binge eating having the largest effect sizes for EI and BMI. These findings highlight the potential use of these EBT as phenotypic markers of susceptibility to overconsume, develop obesity, or to influence outcomes in weight management interventions. Dietary restraint is evidently a complex construct and further research with preload conditions and separate subscales are needed to fully understand its effect on EI. The effect of emotional eating may have been limited by not including mood or stress induction conditions. However, this review still indicates it plays a role in EI and BMI. Importantly, there are methodological and conceptual issues with EBT

that need to be stressed when utilizing these traits in eating behavior research. This does not mean they should not be used but a greater focus on objective indices of what such traits should predict (food intake and EI, BMI or weight change) might improve their use in explaining eating behavior and energy balance in the wider population.

ACKNOWLEDGMENT

The authors would like to thank Slimming World for supporting and funding this work.

CONFLICTS OF INTEREST

Pr. James Stubbs consults for Slimming World UK through The University of Leeds. Slimming World was not involved in the analysis or interpretation of this review.

AUTHOR CONTRIBUTIONS

CD, JS, GF, and MH performed the literature search, study selection, data extraction, and quality assessment. CD performed the meta-analysis and drafted the manuscript. All authors critically revised the manuscript.

ORCID

Clarissa Dakin  <https://orcid.org/0000-0002-6346-3606>

REFERENCES

1. De Onis M, Blössner M, Borghi E. Global prevalence and trends of overweight and obesity among preschool children. *Am J Clin Nutr.* 2010;92(5):1257-1264. doi:10.3945/ajcn.2010.29786
2. Blundell JE, Stubbs R, Golding C, et al. Resistance and susceptibility to weight gain: individual variability in response to a high-fat diet. *Physiol Behav.* 2005;86(5):614-622. doi:10.1016/j.physbeh.2005.08.052
3. Llewellyn C, Wardle J. Behavioral susceptibility to obesity: gene-environment interplay in the development of weight. *Physiol Behav.* 2015;152(Pt B):494-501. doi:10.1016/j.physbeh.2015.07.006
4. Finlayson G, Arlotti A, Dalton M, King N, Blundell JE. Implicit wanting and explicit liking are markers for trait binge eating. A susceptible phenotype for overeating. *Appetite.* 2011;57(3):722-728. doi:10.1016/j.appet.2011.08.012
5. Stunkard AJ, Messick S. The three-factor eating questionnaire to measure dietary restraint, disinhibition and hunger. *J Psychosom Res.* 1985;29(1):71-83. doi:10.1016/0022-3999(85)90010-8
6. Vainik U, Garcia-Garcia I, Dagher A. Uncontrolled eating: a unifying heritable trait linked with obesity, overeating, personality and the brain. *Eur J Neurosci.* 2019;50(3):2430-2445. doi:10.1111/ejn.14352
7. Blundell JE, King NA, Bryant EJ. Disinhibition: its effects on appetite and weight regulation. *Obes Rev.* 2008;9(5):409-419. doi:10.1111/j.1467-789X.2007.00426.x
8. Espel-Huyhn HM, Muratore AF, Lowe MR. A narrative review of the construct of hedonic hunger and its measurement by the power of food scale. *Obes Sci Pract.* 2018;4(3):238-249. doi:10.1002/osp4.161
9. French A, Epstein LH, Jeffery RW, Blundell JE, Wardle J. Eating behavior dimensions. Associations with energy intake and body weight. A review. *Appetite.* 2012;59(2):541-549. doi:10.1016/j.appet.2012.07.001

10. Stubbs RJ, O'Reilly LM, Whybrow S, et al. Measuring the difference between actual and reported food intakes in the context of energy balance under laboratory conditions. *Br J Nutr*. 2014;111(11):2032-2043. doi:10.1017/S0007114514000154
11. Devonport TJ, Nicholls W, Fullerton C. A systematic review of the association between emotions and eating behaviour in normal and overweight adult populations. *J Health Psychol*. 2019;24(1):3-24. doi:10.1177/1359105317697813
12. Vainik U, Dagher A, Dubé L, Fellows LK. Neurobehavioural correlates of body mass index and eating behaviours in adults: a systematic review. *Neurosci Biobehav Rev*. 2013;37(3):279-299. doi:10.1016/j.neubiorev.2012.11.008
13. Bryant EJ, Rehman J, Pepper LB, Walters ER. Obesity and eating disturbance: the role of TFEQ restraint and disinhibition. *Curr Obes Rep*. 2019;8(4):363-372. doi:10.1007/s13679-019-00365-x
14. Robinson E, Haynes A, Hardman CA, Jones A, Kemps E, Higgs S. The bogus taste test: validity as a measure of laboratory food intake. *Appetite*. 2017;116:223-231. doi:10.1016/j.appet.2017.05.002
15. Dhurandhar NV, Schoeller D, Brown AW, et al. Energy balance measurement: when something is not better than nothing. *Int J Obes (Lond)*. 2015;39(7):1109-1113. doi:10.1038/ijo.2014.199
16. UCL. Eating Behavior Questionnaires. Accessed 21/03/2022. <https://www.ucl.ac.uk/epidemiology-health-care/research/behavioural-science-and-health/resources/questionnaires/eating-behaviour-questionnaires>
17. Grid-Enabled Measures Database. Obesity. Accessed 21/03/2022. <https://www.gem-measures.org/Public/GEMSearchResults.aspx?allm=true&srchterm=obesity>
18. Arab Psychology. Psychological Scales. Accessed 21/03/2022. <https://scales.arabpsychology.com>
19. McGowan J, Sampson M, Salzwedel DM, Cogo E, Foerster V, Lefebvre C. PRESS peer review of electronic search strategies: 2015 guideline statement. *J Clin Epidemiol*. 2016;75:40-46. doi:10.1016/j.jclinepi.2016.01.021
20. Shamseer L, Moher D, Clarke M, et al. Preferred reporting items for systematic review and meta-analysis protocols (PRISMA-P) 2015: elaboration and explanation. *BMJ*. 2015;349:g7647.
21. Gormally J, Black S, Daston S, Rardin D. The assessment of binge eating severity among obese persons. *Addict Behav*. 1982;7(1):47-55. doi:10.1016/0306-4603(82)90024-7
22. American Psychiatric Association. *Diagnostic and statistical manual of mental disorders: DSM-5*. 5th ed. Washington, DC: American Psychiatric Association; 2013. doi:10.1176/appi.books.9780890425596.
23. Cochrane. Data Extraction Forms. Accessed 21/03/2022. <https://dplp.cochrane.org/data-extraction-forms>
24. R Core Team. R: A language and environment for statistical computing. R Foundation for Statistical Computing. <https://www.R-project.org/>
25. Harrer M, Cuijpers P, Furukawa T, Ebert D. Companion R Package For The Guide 'Doing Meta-Analysis in R'. 2019. <http://dmetar.protectlab.org/>
26. Lüdtke D. esc: Effect Size Computation for Meta Analysis (Version 0.5.1). 2019; doi:10.5281/zenodo.1249218, <https://CRAN.R-project.org/package=esc>
27. Wickham, Averick M, Bryan J, et al. Welcome to the tidyverse. *J Open Source Softw*. 2019;4(43):1686. doi:10.21105/joss.01686
28. Balduzzi S, Rücker G, Schwarzer G. How to perform a meta-analysis with R: a practical tutorial. *Evid Based Ment Health*. 2019;22(4):153-160. doi:10.1136/ebmental-2019-300117
29. Fisher RA. Statistical methods for research workers. In: *Breakthroughs in statistics*. Springer; 1992:66-70. doi:10.1007/978-1-4612-4380-9_6.
30. Higgins JP, Thomas J, Chandler J, et al. *Cochrane handbook for systematic reviews of interventions*. John Wiley & Sons; 2019. doi:10.1002/9781119536604.
31. Harrer M, Cuijpers P, Furukawa TA, Ebert DD. *Doing meta-analysis with R: A hands-on guide*. Chapman and Hall/CRC; 2021. doi:10.1201/9781003107347.
32. Funder DC, Ozer DJ. Evaluating effect size in psychological research: sense and nonsense. *Adv Methods Pract Psychol Sci*. 2019;2(2):156-168. doi:10.1177/2515245919847202
33. von Hippel PT. The heterogeneity statistic I^2 can be biased in small meta-analyses. *BMC Med Res Methodol*. 2015;15(1):1, 35-8. doi:10.1186/s12874-015-0024-z
34. Knapp G, Hartung J. Improved tests for a random effects meta-regression with a single covariate. *Stat Med*. 2003;22(17):2693-2710. doi:10.1002/sim.1482
35. Int'Hout J, Ioannidis J, Borm GF. The Hartung-Knapp-Sidik-Jonkman method for random effects meta-analysis is straightforward and considerably outperforms the standard DerSimonian-Laird method. *BMC Med Res Methodol*. 2014;14(1):1-12. doi:10.1186/1471-2288-14-25
36. Hedges LV. Distribution theory for Glass's estimator of effect size and related estimators. *J Educ Stat*. 1981;6(2):107-128. doi:10.3102/10769986006002107
37. Hong Q, Pluye P, Fàbregues S, et al. Mixed Methods Appraisal Tool (MMAT) Version 2018. Accessed 21/03/2022. http://mixedmethodsappraisaltoolpublic.pbworks.com/w/file/attach/127916259/MMAT_2018_criteria-manual_2018-08-01_ENG.pdf
38. Hong QN, Fàbregues S, Bartlett G, et al. The mixed methods appraisal tool (MMAT) version 2018 for information professionals and researchers. *Educ Inf*. 2018;34(4):285-291. doi:10.3233/EFI-180221
39. Tylka TL. Development and psychometric evaluation of a measure of intuitive eating. *J Couns Psychol*. 2006;53(2):226-240. doi:10.1037/0022-0167.53.2.226
40. Tylka TL, Kroon Van Diest AM. The intuitive eating scale-2: item refinement and psychometric evaluation with college women and men. *J Couns Psychol*. 2013;60(1):137-153. doi:10.1037/a0030893
41. Framson C, Kristal AR, Schenk JM, Littman AJ, Zeliadt S, Benitez D. Development and validation of the mindful eating questionnaire. *J Am Diet Assoc*. 2009;109(8):1439-1444. doi:10.1016/j.jada.2009.05.006
42. Green S, Delargy H, Joanes D, Blundell J. A satiety quotient: a formulation to assess the satiating effect of food. *Appetite*. 1997;29(3):291-304. doi:10.1006/appe.1997.0096
43. Hunot C, Fildes A, Croker H, Llewellyn CH, Wardle J, Beeken RJ. Appetitive traits and relationships with BMI in adults: development of the adult eating behaviour questionnaire. *Appetite*. 2016;105:356-363. doi:10.1016/j.appet.2016.05.024
44. Herman CP, Mack D. Restrained and unrestrained eating. *J Pers*. 1975;43(4):647-660. doi:10.1111/j.1467-6494.1975.tb00727.x
45. Herman CP, Polivy J, Silver R. Effects of an observer on eating behavior: the induction of "sensible" eating. *J Pers*. 1979;47(1):85-99. doi:10.1111/j.1467-6494.1979.tb00616.x
46. van Strien T, Frijters JE, Bergers GP, Defares PB. The Dutch eating behavior questionnaire (DEBQ) for assessment of restrained, emotional, and external eating behavior. *Int J Eat Disord*. 1986;5(2):295-315. doi:10.1002/1098-108X(198602)5:2<30.CO;2-T
47. Dalton M, Finlayson G, Blundell J, Hill A. Preliminary validation and principal components analysis of the control of eating questionnaire (CoEQ) for the experience of food craving. *Eur J Clin Nutr*. 2015;69(12):1313-1317. doi:10.1038/ejcn.2015.57
48. Lowe MR, Butryn ML, Didie ER, et al. The power of food scale. A new measure of the psychological influence of the food environment. *Appetite*. 2009;53(1):114-118. doi:10.1016/j.appet.2009.05.016
49. White MA, Whisenhunt BL, Williamson DA, Greenway FL, Netemeyer RG. Development and validation of the food-craving inventory. *Obes Res*. 2002;10(2):107-114. doi:10.1038/oby.2002.17

50. Fairburn CG, Cooper Z, O'Connor M. The eating disorder examination. *Int J Eat Disord*. 1993;6:1-8.
51. Akkermann K, Herik M, Aluoja A, Järv A. *Constructing an assessment scale for eating disorders*. Tartu: Department of Psychology of University of Tartu; 2010.
52. Stice E, Telch CF, Rizvi SL. Development and validation of the eating disorder diagnostic scale: a brief self-report measure of anorexia, bulimia, and binge-eating disorder. *Psychol Assess*. 2000;12(2):123-131. doi:10.1037/1040-3590.12.2.123
53. Garner DM. *Eating disorder Inventory-2; pro-fessional manual*. Psychological assessment resources; 1991.
54. Clark MM, Abrams DB, Niaura RS, Eaton CA, Rossi JS. Self-efficacy in weight management. *J Consult Clin Psychol*. 1991;59(5):739-744. doi:10.1037/0022-006X.59.5.739
55. Vainik U, Eun Han J, Epel ES, Janet Tomiyama A, Dagher A, Mason AE. Rapid assessment of reward-related eating: the RED-X5. *Obesity*. 2019;27(2):325-331. doi:10.1002/oby.22374
56. Gearhardt AN, Corbin WR, Brownell KD. Development of the Yale food addiction scale version 2.0. *Psychol Addict Behav*. 2016;30(1):113-121. doi:10.1037/adb0000136
57. Anderson DA, Schaumberg K, Anderson LM, Reilly EE. Is level of intuitive eating associated with plate size effects? *Eat Behav*. 2015;18:125-130. doi:10.1016/j.eatbeh.2015.05.005
58. Anderson LM, Reilly EE, Schaumberg K, Dmochowski S, Anderson DA. Contributions of mindful eating, intuitive eating, and restraint to BMI, disordered eating, and meal consumption in college students. *Eat Weight Disord*. 2016;21(1):83-90. doi:10.1007/s40519-015-0210-3
59. Ruzanska UA, Warschburger P. How is intuitive eating related to self-reported and laboratory food intake in middle-aged adults? *Eat Behav*. 2020;38:101405. doi:10.1016/j.eatbeh.2020.101405
60. Dalton M, Hollingworth S, Blundell J, Finlayson G. Weak satiety responsiveness is a reliable trait associated with hedonic risk factors for overeating among women. *Nutrients*. 2015;7(9):7421-7436. doi:10.3390/nu7095345
61. Drapeau V, Blundell J, Therrien F, Lawton C, Richard D, Tremblay A. Appetite sensations as a marker of overall intake. *Br J Nutr*. 2005;93(2):273-280. doi:10.1079/BJN20041312
62. Drapeau V, Jacob R, Panahi S, Tremblay A. Effect of energy restriction on eating behavior traits and psychobehavioral factors in the low satiety phenotype. *Nutrients*. 2019;11(2):245. doi:10.3390/nu11020245
63. Zuraikat FM, Roe LS, Smethers AD, Reihart LW, Rolls BJ. Does the cost of a meal influence the portion size effect? *Appetite*. 2018;127:341-348. doi:10.1016/j.appet.2018.05.020
64. Ard JD, Desmond RA, Allison DB, Conway JM. Dietary restraint and disinhibition do not affect accuracy of 24-hour recall in a multiethnic population. *J am Diet Assoc*. 2006;106(3):434-437. doi:10.1016/j.jada.2005.12.006
65. Bellisle F, Dalix A-M, Airinei G, Hercborg S, Péneau S. Influence of dietary restraint and environmental factors on meal size in normal-weight women. A laboratory study. *Appetite*. 2009;53(3):309-313. doi:10.1016/j.appet.2009.07.006
66. Bryant EJ, Caudwell P, Blundell JE, Hopkins ME, King NA. Psychomarkers of weight loss. The roles of TFEQ disinhibition and restraint in exercise-induced weight management. *Appetite*. 2012;58(1):234-241. doi:10.1016/j.appet.2011.09.006
67. Chambers L, Yeomans MR. Individual differences in satiety response to carbohydrate and fat. Predictions from the three factor eating questionnaire (TFEQ). *Appetite*. 2011;56(2):316-323. doi:10.1016/j.appet.2011.01.003
68. Coelho JS, Polivy J, Herman CP, Pliner P. Wake up and smell the cookies. Effects of olfactory food-cue exposure in restrained and unrestrained eaters. *Appetite*. 2009;52(2):517-520. doi:10.1016/j.appet.2008.10.008
69. Cools J, Schotte DE, McNally RJ. Emotional arousal and overeating in restrained eaters. *J Abnorm Psychol*. 1992;101(2):348-351. doi:10.1037/0021-843X.101.2.348
70. de Witt Huberts JC, Evers C, de Ridder DT. Double trouble: restrained eaters do not eat less and feel worse. *Psychol Health*. 2013;28(6):686-700. doi:10.1080/08870446.2012.751106
71. Dweck JS, Jenkins SM, Nolan LJ. The role of emotional eating and stress in the influence of short sleep on food consumption. *Appetite*. 2014;72:106-113. doi:10.1016/j.appet.2013.10.001
72. Fedoroff ID, Polivy J, Herman CP. The effect of pre-exposure to food cues on the eating behavior of restrained and unrestrained eaters. *Appetite*. 1997;28(1):33-47. doi:10.1006/appe.1996.0057
73. Finlayson G, Blundell JE, Bordes I, Griffioen-Roose S, de Graaf C. Susceptibility to overeating affects the impact of savory or sweet drinks on satiation, reward, and food intake in nonobese women. *J Nutr*. 2012;142(1):125-130. doi:10.3945/jn.111.148106
74. Guerrieri R, Nederkoorn C, Schrooten M, Martijn C, Jansen A. Inducing impulsivity leads high and low restrained eaters into overeating, whereas current dieters stick to their diet. *Appetite*. 2009;53(1):93-100. doi:10.1016/j.appet.2009.05.013
75. Haynes C, Lee MD, Yeomans MR. Interactive effects of stress, dietary restraint, and disinhibition on appetite. *Eat Behav*. 2003;4(4):369-383. doi:10.1016/j.eatbeh.2003.07.005
76. Herhaus B, Petrowski K. The effect of restrained eating on acute stress-induced food intake in people with obesity. *Appetite*. 2021;159:105045. doi:10.1016/j.appet.2020.105045
77. Higgs S, Williamson AC, Attwood AS. Recall of recent lunch and its effect on subsequent snack intake. *Physiol Behav*. 2008;94(3):454-462. doi:10.1016/j.physbeh.2008.02.011
78. Hofmann W, Friese M. Impulses got the better of me: alcohol moderates the influence of implicit attitudes toward food cues on eating behavior. *J Abnorm Psychol*. 2008;117(2):420-427. doi:10.1037/0021-843X.117.2.420
79. Jansen A. How restrained eaters perceive the amount they eat. *Br J Clin Psychol*. 1996;35(3):381-392. doi:10.1111/j.2044-8260.1996.tb01192.x
80. Jansen A, Merckelbach H, Oosterlaan J, Tuiten A, Van Den Hout M. Cognitions and self-talk during food intake of restrained and unrestrained eaters. *Behav Res Ther*. 1988;26(5):393-398. doi:10.1016/0005-7967(88)90072-1
81. Lattimore P, Maxwell L. Cognitive load, stress, and disinhibited eating. *Eat Behav*. 2004;5(4):315-324. doi:10.1016/j.eatbeh.2004.04.009
82. Martin CK, Williamson DA, Geiselman PJ, et al. Consistency of food intake over four eating sessions in the laboratory. *Eat Behav*. 2005;6(4):365-372. doi:10.1016/j.eatbeh.2005.03.002
83. McNeil J, Lamothe G, Cameron JD, et al. Investigating predictors of eating: is resting metabolic rate really the strongest proxy of energy intake? *Am J Clin Nutr*. 2017;106(5):ajcn153718. doi:10.3945/ajcn.117.153718
84. Myhre R, Buchwald D, Kratz M, et al. A twin study of differences in the response of plasma ghrelin to a milkshake preload in restrained eaters. *Physiol Behav*. 2014;129:50-56. doi:10.1016/j.physbeh.2014.02.008
85. Oliver G, Wardle J, Gibson EL. Stress and food choice: a laboratory study. *Psychosom Med*. 2000;62(6):853-865. doi:10.1097/00006842-200011000-00016
86. Ouwens MA, van Strien T, van der Staak CP. Tendency toward overeating and restraint as predictors of food consumption. *Appetite*. 2003;40(3):291-298. doi:10.1016/S0195-6663(03)00006-0
87. Peluso A. Comparison of mindful and slow eating strategies on acute energy intake. *Dissertation Abstracts International: Section B: The Sciences and Engineering*. 2017;78(5-B[E]).
88. Rideout CA, McLean JA, Barr SI. Women with high scores for cognitive dietary restraint choose foods lower in fat and energy. *J am Diet Assoc*. 2004;104(7):1154-1157. doi:10.1016/j.jada.2004.04.024

89. Rolls BJ, Castellanos VH, Shide DJ, et al. Sensory properties of a nonabsorbable fat substitute did not affect regulation of energy intake. *Am J Clin Nutr.* 1997;65(5):1375-1383. doi:10.1093/ajcn/65.5.1375
90. Ruddock HK, Field M, Hardman CA. Exploring food reward and calorie intake in self-perceived food addicts. *Appetite.* 2017;115:36-44. doi:10.1016/j.appet.2016.12.003
91. Schoch AH, Raynor HA. Social desirability, not dietary restraint, is related to accuracy of reported dietary intake of a laboratory meal in females during a 24-hour recall. *Eat Behav.* 2012;13(1):78-81. doi:10.1016/j.eatbeh.2011.11.010
92. Schotte DE, Cools J, McNally RJ. Film-induced negative affect triggers overeating in restrained eaters. *J Abnorm Psychol.* 1990;99(3):317-320. doi:10.1037/0021-843X.99.3.317
93. Shapiro JR, Anderson DA. Counterregulatory eating behavior in multiple item test meals. *Eat Behav.* 2005;6(2):169-178. doi:10.1016/j.eatbeh.2004.08.001
94. Sim AY, Lee LL, Cheon BK. When exercise does not pay: counterproductive effects of impending exercise on energy intake among restrained eaters. *Appetite.* 2018;123:120-127. doi:10.1016/j.appet.2017.12.017
95. Smith CF, Geiselman PJ, Williamson DA, Champagne CM, Bray GA, Ryan DH. Association of dietary restraint and disinhibition with eating behavior, body mass, and hunger. *Eat Weight Disord: EWD.* 1998;3(1):7-15. doi:10.1007/BF03354907
96. Stice E, Fisher M, Lowe MR. Are dietary restraint scales valid measures of acute dietary restriction? Unobtrusive observational data suggest not. *Psychol Assess.* 2004;16(1):51-59. doi:10.1037/1040-3590.16.1.51
97. Stice E, Sysko R, Roberto CA, Allison S. Are dietary restraint scales valid measures of dietary restriction? Additional objective behavioral and biological data suggest not. *Appetite.* 2010;54(2):331-339. doi:10.1016/j.appet.2009.12.009
98. Stinson EJ, Votruba SB, Ventri C, Krakoff J, Gluck ME, Perez M. Food insecurity is associated with maladaptive eating behaviors and objectively measured overeating. *Obesity.* 2018;26(12):1841-1848. doi:10.1002/oby.22305
99. van Strien T, Ouwens MA. Counterregulation in female obese emotional eaters: Schachter, Goldman, and Gordon's (1968) test of psychosomatic theory revisited. *Eat Behav.* 2003;3(4):329-340. doi:10.1016/S1471-0153(02)00092-2
100. Visona C, George VA. Impact of dieting status and dietary restraint on postexercise energy intake in overweight women. *Obes Res.* 2002;10(12):1251-1258. doi:10.1038/oby.2002.170
101. Wallis DJ, Hetherington MM. Stress and eating: the effects of ego-threat and cognitive demand on food intake in restrained and emotional eaters. *Appetite.* 2004;43(1):39-46. doi:10.1016/j.appet.2004.02.001
102. Wallis DJ, Hetherington MM. Emotions and eating. Self-reported and experimentally induced changes in food intake under stress. *Appetite.* 2009;52(2):355-362. doi:10.1016/j.appet.2008.11.007
103. Wardle J, Beales S. Restraint and food intake: an experimental study of eating patterns in the laboratory and in normal life. *Behav Res Ther.* 1987;25(3):179-185. doi:10.1016/0005-7967(87)90044-1
104. Westenhoefer J, Broeckmann P, Münch A-K, Pudel V. Cognitive control of eating behavior and the disinhibition effect. *Appetite.* 1994;23(1):27-41. doi:10.1006/appe.1994.1032
105. Yeomans MR, Coughlan E. Mood-induced eating. Interactive effects of restraint and tendency to overeat. *Appetite.* 2009;52(2):290-298. doi:10.1016/j.appet.2008.10.006
106. Yeomans MR, Tovey H, Tinley E, Haynes C. Effects of manipulated palatability on appetite depend on restraint and disinhibition scores from the three-factor eating questionnaire. *Int J Obes (Lond).* 2004;28(1):144-151. doi:10.1038/sj.ijo.0802483
107. Zambrowicz R, Schebendach J, Sysko R, Mayer LES, Walsh BT, Steinglass JE. Relationship between three factor eating questionnaire-restraint subscale and food intake. *Int J Eat Disord.* 2019;52(3):255-260. doi:10.1002/eat.23014
108. Appelhans BM, Liebman R, Woolf K, Pagoto SL, Schneider KL, Whited MC. Inhibiting food reward: delay discounting, food reward sensitivity, and palatable food intake in overweight and obese women. *Obesity.* 2011;19(11):2175-2182. doi:10.1038/oby.2011.57
109. Ely AV, Howard J, Lowe MR. Delayed discounting and hedonic hunger in the prediction of lab-based eating behavior. *Eat Behav.* 2015;19:72-75. doi:10.1016/j.eatbeh.2015.06.015
110. Nolan-Poupart S, Veldhuizen MG, Geha P, Small DM. Midbrain response to milkshake correlates with ad libitum milkshake intake in the absence of hunger. *Appetite.* 2013;60:168-174. doi:10.1016/j.appet.2012.09.032
111. Martin CK, O'Neil PM, Tollefson G, Greenway FL, White MA. The association between food cravings and consumption of specific foods in a laboratory taste test. *Appetite.* 2008;51(2):324-326. doi:10.1016/j.appet.2008.03.002
112. Epstein LH, Lin H, Carr KA, Fletcher KD. Food reinforcement and obesity. Psychological moderators. *Appetite.* 2012;58(1):157-162. doi:10.1016/j.appet.2011.09.025
113. Hopkins M, Michalowska J, Whybrow S, Horgan GW, Stubbs RJ. Identification of psychological correlates of dietary misreporting under laboratory and free-living environments. *Br J Nutr.* 2021;126(2):264-275. doi:10.1017/S000711452000389X
114. Kakoschke N, Kemps E, Tiggemann M. External eating mediates the relationship between impulsivity and unhealthy food intake. *Physiol Behav.* 2015;147:117-121. doi:10.1016/j.physbeh.2015.04.030
115. Robinson E, Haynes A. Individual differences and moderating participant characteristics in the effect of reducing portion size on meal energy intake: pooled analysis of three randomized controlled trials. *Appetite.* 2021;159:105047. doi:10.1016/j.appet.2020.105047
116. van Strien T, Donker MH, Ouwens MA. Is desire to eat in response to positive emotions an 'obese' eating style: is kummerspeck for some people a misnomer? *Appetite.* 2016;100:225-235. doi:10.1016/j.appet.2016.02.035
117. Evers C, de Ridder DTD, Adriaanse MA. Assessing yourself as an emotional eater: mission impossible? *Health Psychol.* 2009;28(6):717-725. doi:10.1037/a0016700
118. Raspopov K, Abizaid A, Matheson K, Anisman H. Anticipation of a psychosocial stressor differentially influences ghrelin, cortisol and food intake among emotional and non-emotional eaters. *Appetite.* 2014;74:35-43. doi:10.1016/j.appet.2013.11.018
119. van Strien T, Herman CP, Anschutz DJ, Engels RC, de Weerth C. Moderation of distress-induced eating by emotional eating scores. *Appetite.* 2012;58(1):277-284. doi:10.1016/j.appet.2011.10.005
120. Alger S, Seagle H, Ravussin E. Food-intake and energy expenditure in obese female bingers and non-bingers. *Int J Obes (Lond).* 1995;19(1):11-16.
121. Arumae K, Kreegipuu K, Vainik U. Assessing the overlap between three measures of food reward. *Front Psychol.* 2019;10:883. doi:10.3389/fpsyg.2019.00883
122. Dalton M, Blundell J, Finlayson G. Effect of BMI and binge eating on food reward and energy intake: further evidence for a binge eating subtype of obesity. *Obes Facts.* 2013;6(4):348-359. doi:10.1159/000354599
123. Dalton M, Blundell J, Finlayson GS. Examination of food reward and energy intake under laboratory and free-living conditions in a trait binge eating subtype of obesity. *Front Psychol.* 2013;4:757. doi:10.3389/fpsyg.2013.00757
124. Nasser JA, Gluck ME, Geliebter A. Impulsivity and test meal intake in obese binge eating women. *Appetite.* 2004;43(3):303-307. doi:10.1016/j.appet.2004.04.006

125. Long S, Meyer C, Leung N, Wallis DJ. Effects of distraction and focused attention on actual and perceived food intake in females with non-clinical eating psychopathology. *Appetite*. 2011;56(2):350-356. doi:10.1016/j.appet.2010.12.018
126. Schulte EM, Sonnevile KR, Gearhardt AN. Subjective experiences of highly processed food consumption in individuals with food addiction. *Psychol Addict Behav*. 2019;33(2):144-153. doi:10.1037/adb0000441
127. Vijayvargiya P, Chedid V, Wang XJ, et al. Associations of gastric volumes, ingestive behavior, calorie and volume intake, and fullness in obesity. *Am J Physiol Gastrointest Liver Physiol*. 2020;319(2):G238-G244. doi:10.1152/ajpgi.00140.2020
128. Bellisle F, Dalix AM. Cognitive restraint can be offset by distraction, leading to increased meal intake in women. *Am J Clin Nutr*. 2001;74(2):197-200. doi:10.1093/ajcn/74.2.197
129. Sultson H, Kukk K, Akkermann K. Positive and negative emotional eating have different associations with overeating and binge eating: construction and validation of the positive-negative emotional eating scale. *Appetite*. 2017;116:423-430. doi:10.1016/j.appet.2017.05.035
130. Turner RM, Bird SM, Higgins JP. The impact of study size on meta-analyses: examination of underpowered studies in Cochrane reviews. *PLoS ONE*. 2013;8(3):e59202. doi:10.1371/journal.pone.0059202
131. de Lauzon-Guillain B, Basdevant A, Romon M, et al. Is restrained eating a risk factor for weight gain in a general population? *Am J Clin Nutr*. 2006;83(1):132-138. doi:10.1093/ajcn/83.1.132
132. Lluch A, Herbeth B, Mejean L, Siest G. Dietary intakes, eating style and overweight in the Stanislas family study. *Int J Obes (Lond)*. 2000;24(11):1493-1499. doi:10.1038/sj.ijo.0801425
133. Johnson F, Pratt M, Wardle J. Dietary restraint and self-regulation in eating behavior. *Int J Obes (Lond)*. 2012;36(5):665-674. doi:10.1038/ijo.2011.156
134. Santos I, Sniehotta FF, Marques MM, Carraça EV, Teixeira PJ. Prevalence of personal weight control attempts in adults: a systematic review and meta-analysis. *Obes Rev*. 2017;18(1):32-50. doi:10.1111/obr.12466
135. Stubbs RJ, Duarte C, O'Driscoll R, Turicchi J, Michalowska J. Developing evidence-based behavioural strategies to overcome physiological resistance to weight loss in the general population. *Proc Nutr Soc*. 2019;78(4):576-589. doi:10.1017/S0029665119001083
136. Heatherton TF, Herman CP, Polivy J, King GA, McGree ST. The (mis) measurement of restraint: an analysis of conceptual and psychometric issues. *J Abnorm Psychol*. 1988;97(1):19-28. doi:10.1037/0021-843X.97.1.19
137. Mela DJ. Determinants of food choice: relationships with obesity and weight control. *Obes Res*. 2001;9(S11):249S-255S. doi:10.1038/oby.2001.127
138. van Strien T, Cebolla A, Etchemendy E, et al. Emotional eating and food intake after sadness and joy. *Appetite*. 2013;66:20-25. doi:10.1016/j.appet.2013.02.016
139. Elfhag K, Rössner S. Who succeeds in maintaining weight loss? A conceptual review of factors associated with weight loss maintenance and weight regain. *Obes Rev*. 2005;6(1):67-85. doi:10.1111/j.1467-789X.2005.00170.x
140. Karlsson J, Hallgren P, Kral J, Lindroos A-K, Sjöström L, Sullivan M. Predictors and effects of long-term dieting on mental well-being and weight loss in obese women. *Appetite*. 1994;23(1):15-26. doi:10.1006/appe.1994.1031
141. Niemeier HM, Phelan S, Fava JL, Wing RR. Internal disinhibition predicts weight regain following weight loss and weight loss maintenance. *Obesity*. 2007;15(10):2485-2494. doi:10.1038/oby.2007.295
142. Chaput J-P, Drapeau V, Hetherington M, Lemieux S, Provencher V, Tremblay A. Psychobiological impact of a progressive weight loss program in obese men. *Physiol Behav*. 2005;86(1-2):224-232. doi:10.1016/j.physbeh.2005.07.014
143. Foster G, Wadden T, Swain R, Stunkard A, Platte P, Vogt R. The eating inventory in obese women: clinical correlates and relationship to weight loss. *Int J Obes (Lond)*. 1998;22(8):778-785. doi:10.1038/sj.ijo.0800659
144. Pekkarinen T, Takala I, Mustajoki P. Two year maintenance of weight loss after a VLCD and behavioural therapy for obesity: correlation to the scores of questionnaires measuring eating behaviour. *Int J Obes Relat Metab Disord*. 1996;20(4):332-337.
145. Konttinen H. Emotional eating and obesity in adults: the role of depression, sleep and genes. *Proc Nutr Soc*. 2020;79(3):283-289. doi:10.1017/S0029665120000166
146. Mantzios M, Wilson JC. Mindfulness, eating Behaviours, and obesity: a review and reflection on current findings. *Curr Obes Rep*. 2015;4(1):141-146. doi:10.1007/s13679-014-0131-x
147. Nichols AL, Maner JK. The good-subject effect: investigating participant demand characteristics. *J Gen Psychol*. 2008;135(2):151-166. doi:10.3200/GENP.135.2.151-166
148. O'Driscoll R, Turicchi J, Hopkins M, et al. Comparison of the validity and generalizability of machine learning algorithms for the prediction of energy expenditure: validation study. *JMIR Mhealth Uhealth*. 2021;9(8):e23938. doi:10.2196/23938
149. O'Driscoll R, Turicchi J, Hopkins M, Horgan GW, Finlayson G, Stubbs JR. Improving energy expenditure estimates from wearable devices: a machine learning approach. *J Sports Sci*. 2020;38(13):1496-1505. doi:10.1080/02640414.2020.1746088
150. Sanghvi A, Redman LM, Martin CK, Ravussin E, Hall KD. Validation of an inexpensive and accurate mathematical method to measure long-term changes in free-living energy intake. *Am J Clin Nutr*. 2015;102(2):353-358. doi:10.3945/ajcn.115.111070
151. Shook RP, Hand GA, O'Connor DP, et al. Energy intake derived from an energy balance equation, validated activity monitors, and dual X-ray absorptiometry can provide acceptable caloric intake data among young adults. *J Nutr*. 2018;148(3):490-496. doi:10.1093/jn/nxx029
152. Peng J, Shi P, Qiu J, et al. Clustering Egocentric Images in Passive Dietary Monitoring with Self-Supervised Learning. *arXiv preprint arXiv:220812160*. 2022.
153. Lo FPW, Jobarteh ML, Sun Y, et al. An Intelligent Passive Food Intake Assessment System with Egocentric Cameras. *arXiv preprint arXiv:210503142*. 2021.

SUPPORTING INFORMATION

Additional supporting information can be found online in the Supporting Information section at the end of this article.

How to cite this article: Dakin C, Beaulieu K, Hopkins M, Gibbons C, Finlayson G, Stubbs RJ. Do eating behavior traits predict energy intake and body mass index? A systematic review and meta-analysis. *Obesity Reviews*. 2023;24(1):e13515. doi:10.1111/obr.13515