

Anthropology

Correction for “Long-term trends in human body size track regional variation in subsistence transitions and growth acceleration linked to dairying,” by Jay T. Stock, Emma Pomeroy, Christopher B. Ruff, Marielle Brown, Matthew A. Gasperetti, Fa-Jun Li, Lisa Maher, Caroline Malone, Veena Mushrif-Tripathy, Eóin Parkinson, Michael Rivera, Yun Ysi Siew, Sofija Stefanovic, Simon Stoddart, Gunita Zariņa, and Jonathan C. K. Wells, which published January 17, 2023; 10.1073/pnas.2209482119 (*Proc. Natl. Acad. Sci. U.S.A.* **120**, e2209482119).

The authors note that Fig. 4 appeared incorrectly: “The originally published image for Fig. 4 contained an error in the plot for Northern Europe, which duplicated the scatterplot of data for Central Europe.”

The corrected figure and its legend appear below. The online version has been corrected.

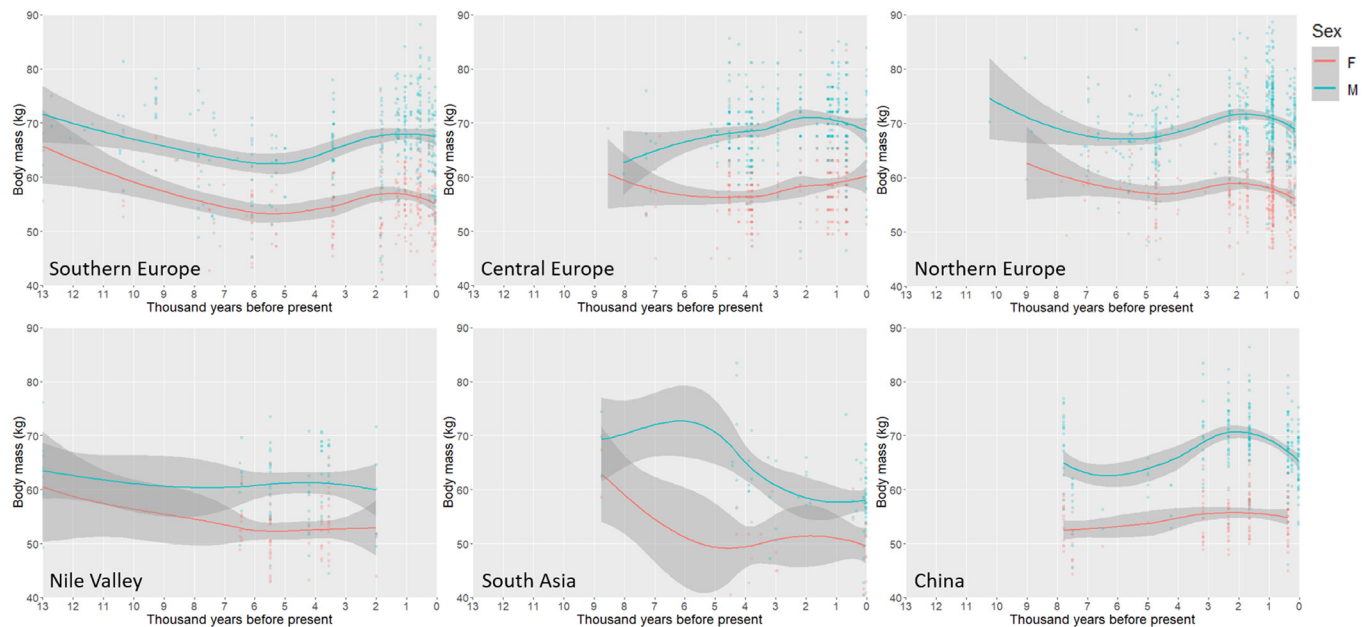


Fig. 4. Scatterplots with LOWESS lines illustrating temporal variation in body mass in Southern, Central, and Northern Europe, the Nile Valley, South Asia, and China. Lowess smoothing parameter: Southern Europe = 0.9, Central Europe = 0.8, Northern Europe = 0.9, Nile Valley = 1.1, South Asia = 1.1, China = 1.0. Shaded regions represent 95% CIs around fit lines.

This article is distributed under [Creative Commons Attribution-NonCommercial-NoDerivatives License 4.0 \(CC BY-NC-ND\)](https://creativecommons.org/licenses/by-nc-nd/4.0/).

Published March 27, 2023.