

## Corrigendum

# Corrigendum to: Modification of ER $\alpha$ by UFM1 Increases Its Stability and Transactivity for Breast Cancer Development

Hee Min Yoo<sup>1,2,3,\*</sup>, Jong Ho Park<sup>1</sup>, Jae Yeon Kim<sup>1</sup>, and Chin Ha Chung<sup>1,4,\*</sup>

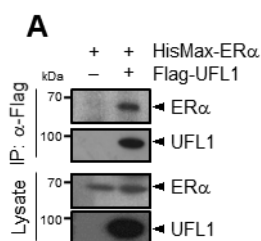
<sup>1</sup>School of Biological Sciences, Seoul National University, Seoul 08826, Korea, <sup>2</sup>Biometrology Group, Korea Research Institute of Standards and Science (KRISS), Daejeon 34113, Korea, <sup>3</sup>Department of Precision Measurement, University of Science & Technology (UST), Daejeon 34113, Korea, <sup>4</sup>The Second Division of Natural Sciences, Korea National Academy of Sciences, Seoul 06579, Korea

\*Correspondence: hmy@kriss.re.kr (HMY); chchung@snu.ac.kr (CHC)  
<https://doi.org/10.14348/molcells.2022.0029>  
[www.molcells.org](http://www.molcells.org)

**Corrigendum to:** Mol. Cells 2022; 45(6): 425-434  
<https://doi.org/10.14348/molcells.2022.0029>

In the article by Yoo et al. that appeared in the journal, the panel A in Fig. 1, the panel C in Fig. 6, and Fig. 6C legend have been corrected by the authors as shown below because the authors made image duplications during the arrangement of the images and typo errors in Fig. 6C legend. This correction will not affect the conclusions of this article.

Fig. 1



Published online April 6, 2023

eISSN: 0219-1032

©The Korean Society for Molecular and Cellular Biology.

©This is an open-access article distributed under the terms of the Creative Commons Attribution-NonCommercial-ShareAlike 3.0 Unported License. To view a copy of this license, visit <http://creativecommons.org/licenses/by-nc-sa/3.0/>.

Fig. 6

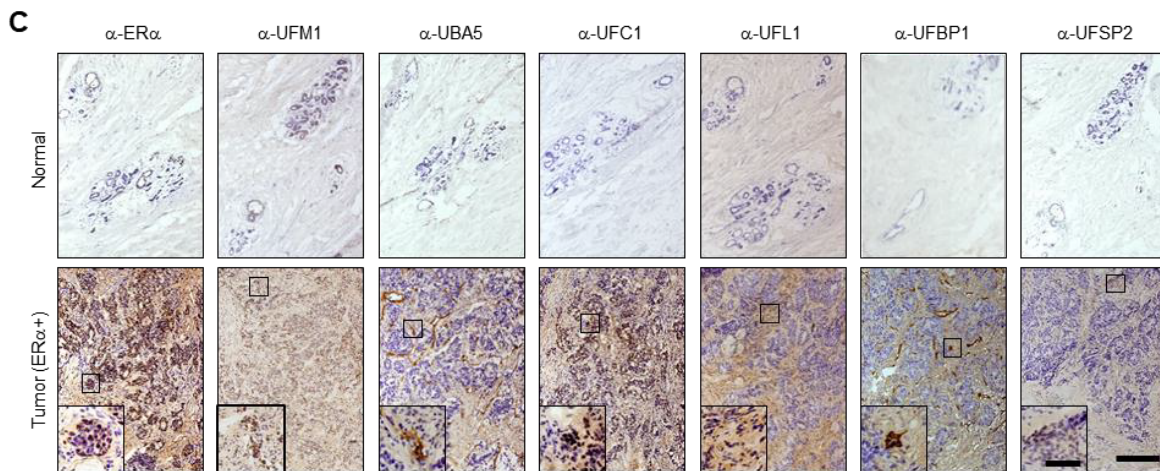


Fig. 6C legend

(C) Normal and ER $\alpha$ -positive tumor tissues were subjected to immunohistochemical analysis. The large boxes (scale bar = 500  $\mu$ m) show the magnified view of the small boxes (scale bar = 100  $\mu$ m).