



Published in final edited form as:

Cell Metab. 2023 April 04; 35(4): 722. doi:10.1016/j.cmet.2023.03.011.

NRF2 activation induces NADH-reductive stress, providing a metabolic vulnerability in lung cancer

Tommy Weiss-Sadan,

Maolin Ge^{*},

Makiko Hayashi,

Magdy Gohar,

Cong-Hui Yao,

Adriaan de Groot,

Stefan Harry,

Alexander Carlin,

Hannah Fischer,

Lei Shi,

Ting-Yu Wei,

Charles H. Adelman,

Konstantin Wolf,

Tristan Vornbäumen,

Benedikt R. Dürr,

Mariko Takahashi,

Marianne Richter,

Junbing Zhang,

Tzu-Yi Yang,

Vindhya Vijay,

David E. Fisher,

Aaron N. Hata,

Marcia C. Haigis,

Raul Mostoslavsky,

Nabeel Bardeesy,

Thales Papagiannakopoulos,

Liron Bar-Peled^{*}

In the originally published version of this article, a panel was mistakenly duplicated in Figure 4C. The image was duplicated when we were assembling the figure. This error has

^{*}Correspondence: mge1@mgh.harvard.edu (M.G.), lbar-peled@mgh.harvard.edu (L.B.-P).
(*Cell Metabolism* 35, 487–503.e1–e7; March 7, 2023)

been corrected and does not affect the conclusions of the paper. The authors apologize for any confusion that this error may have caused.

Author Manuscript

Author Manuscript

Author Manuscript

Author Manuscript

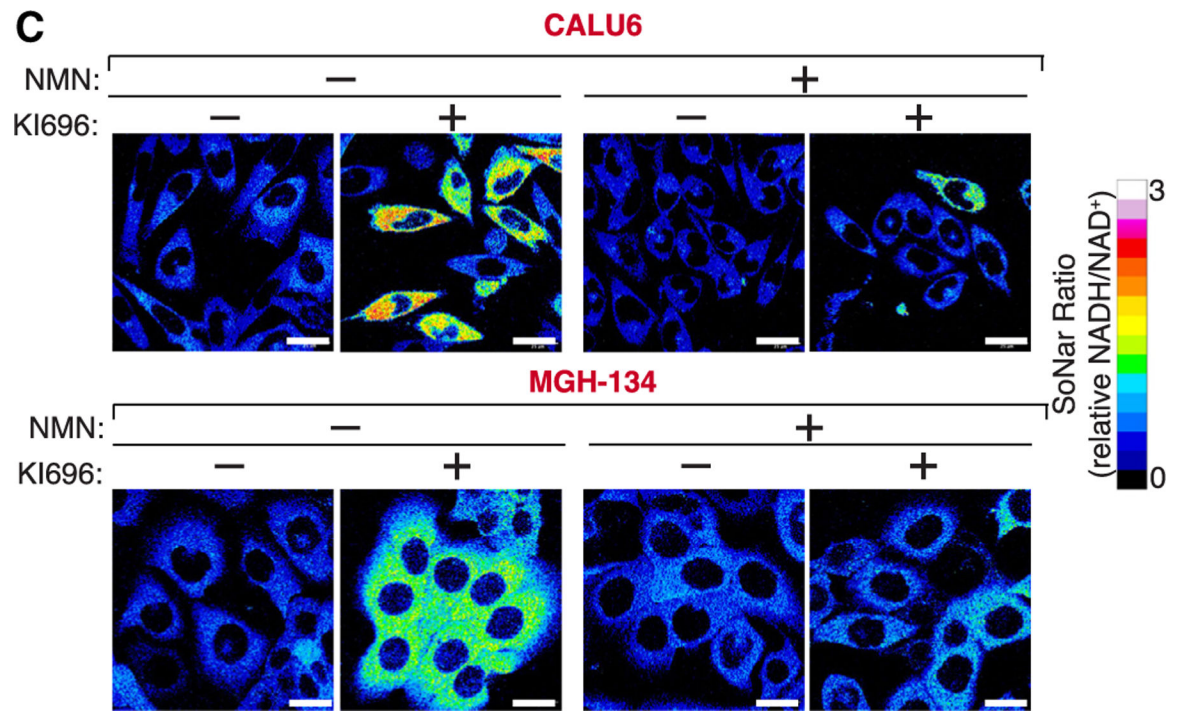


Figure 4C.
NRF2 induces NADH-reductive stress in *KEAP1*-dependent cells (corrected)