

Karihtala K, Leivonen S-K, Karjalainen-Lindsberg M-L, et al.
 Checkpoint protein expression in the tumor microenvironment
 defines the outcome of classical Hodgkin lymphoma patients.
Blood Adv. 2022;6(6):1919-1931.

In the color legends for Figures 2B, 3A, 4B and 5A, the colors for “Alive” and “Dead” under “Survival” were transposed. “Dead” should be orange, and “Alive” should be green. The corrected Figures 2-5 are shown below.

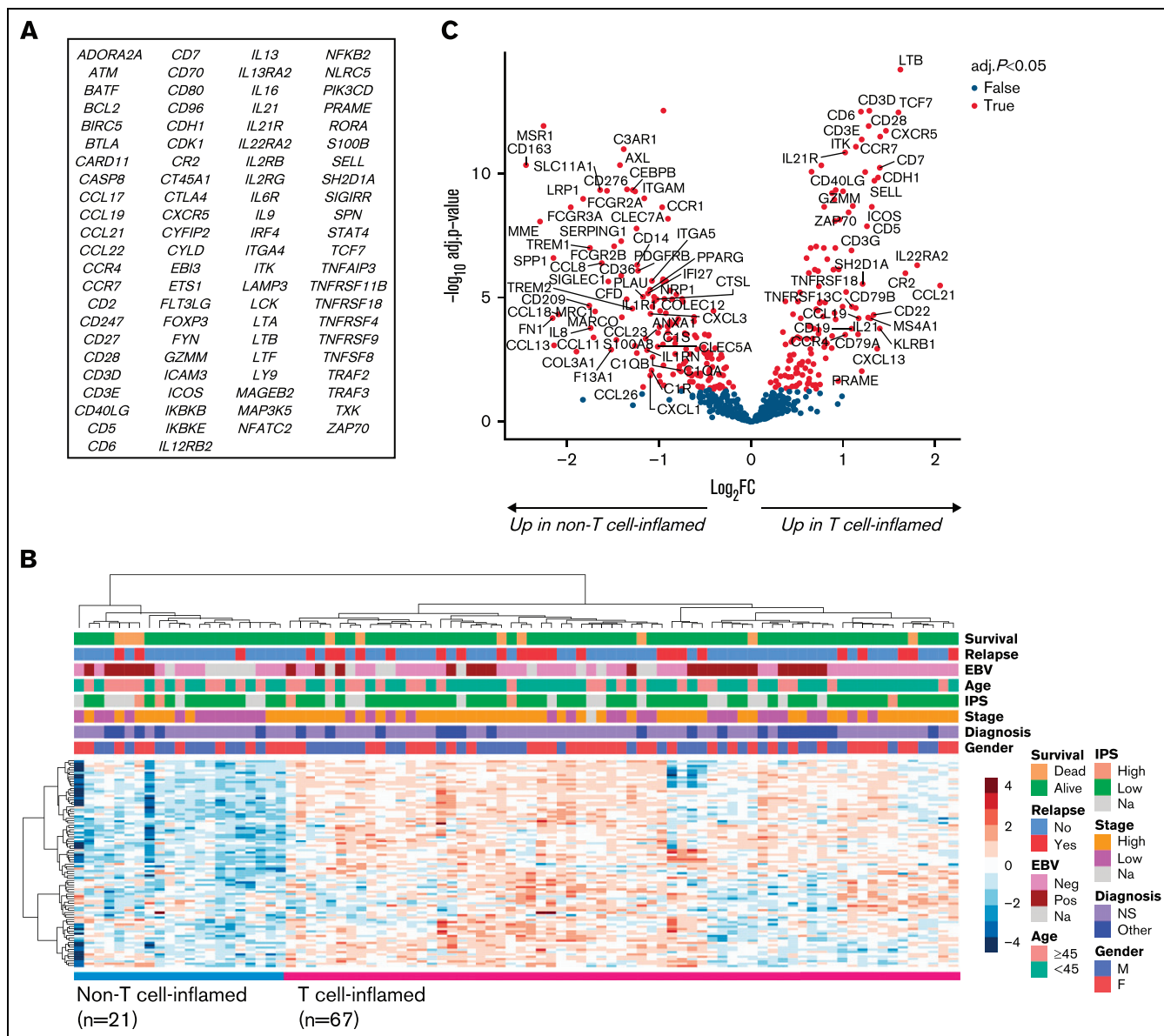


Figure 2.

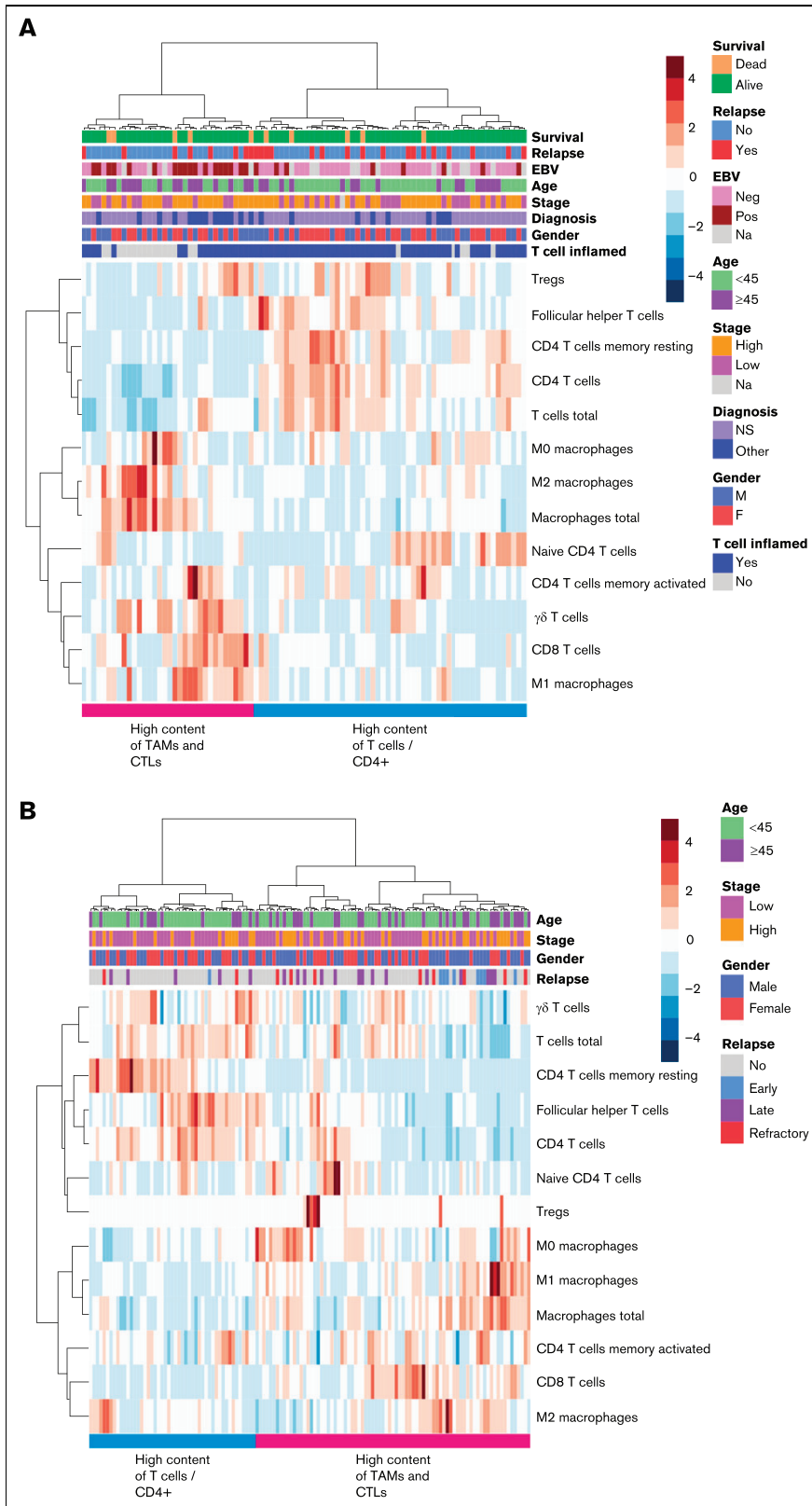


Figure 3.

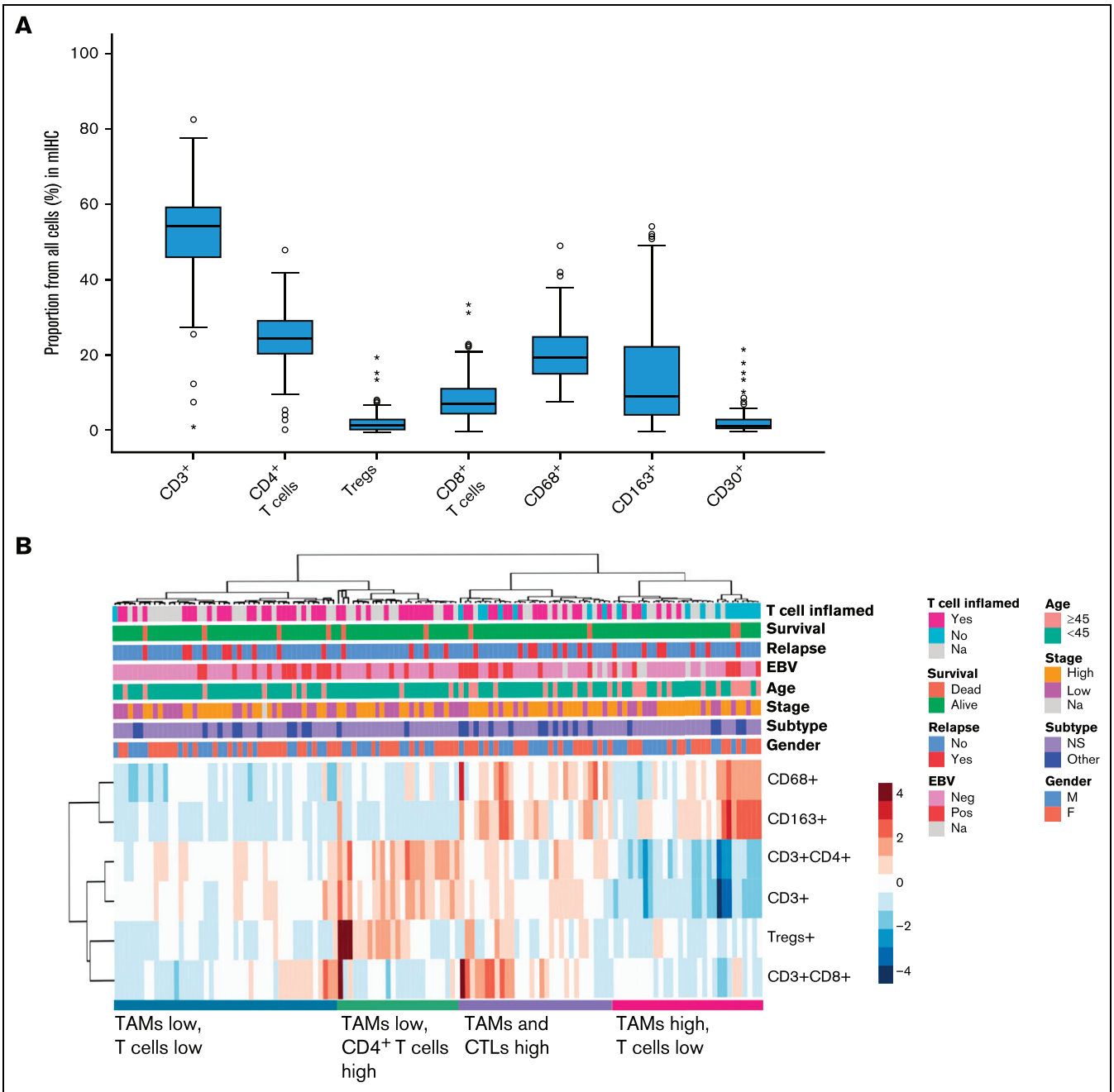


Figure 4.

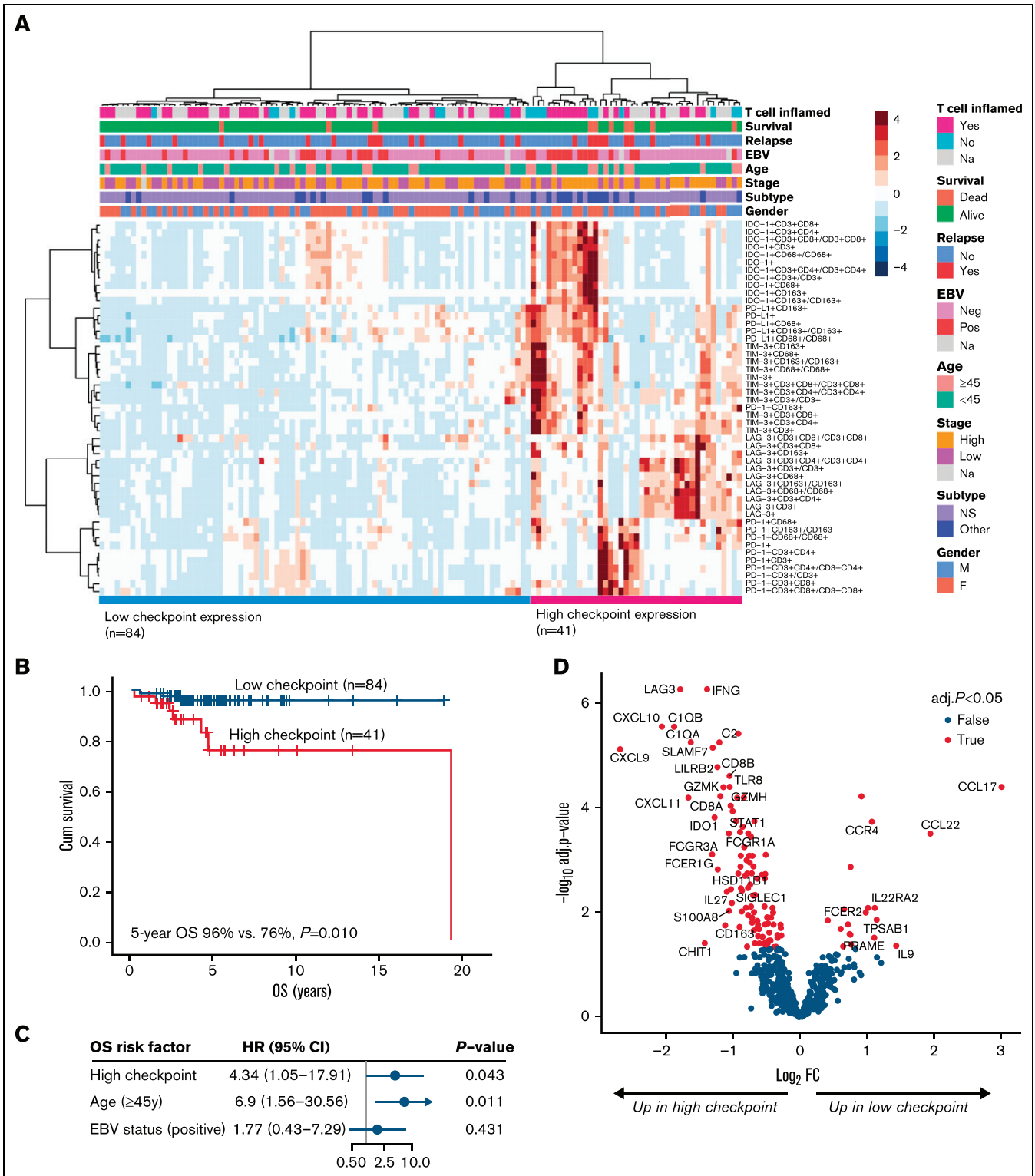


Figure 5.

<https://doi.org/10.1182/bloodadvances.2022008775>

© 2023 by The American Society of Hematology