

A family showing no evidence of linkage between the ataxia telangiectasia gene and chromosome 11q22-23

D Hernandez, C M McConville, M Stacey, C G Woods, M M Brown, P Shutt, G Rysiecki, A M R Taylor

Abstract

We have studied an inbred family in which two cousins presented with the same clinical features of ataxia telangiectasia (AT). Both patients are still ambulatory at ages 25 and 20. Cellular features of both patients are typical of AT and include increased radiosensitivity and an increased level of spontaneously occurring chromosome aberrations in peripheral blood lymphocytes. Linkage studies and haplotype analysis show no clear evidence that the gene for AT in this family is on chromosome 11q22-23. As previously reported AT families from complementation groups AB, C, and D have all shown linkage to this region of 11q22-23. Our study is of importance in suggesting additional locus heterogeneity.

(J Med Genet 1993;30:135-40)

Ataxia telangiectasia (AT) is a recessively inherited disorder showing progressive cerebellar degeneration in which patients are predisposed to developing lymphoid tumours.¹² A gene for ataxia telangiectasia has been mapped to chromosome 11q22-23,³⁻⁵ a region associated with neurological and immune function loci. In view of reports of at least four complementation groups, AB, C, D, and E,^{3a} there may be a number of genes in this chromosome segment. It is clear, however, that the AT locus for patients in groups AB, and C is at 11q22-23³⁶ and both may be between *NCAM/DRD2* and *STMY/D11S385*.⁷ Fibroblasts from a group D patient have been complemented by chromosome 11 microcell fusion^{8,9} and the group D gene may be distal to *THY-1* between *D11S147* and *D11S133*.^{7,10} One group E family we have studied did not provide any support for the existence of this AT locus outside the 11q22-23 region.⁵

In addition to the evidence for genetic heterogeneity as shown by complementation, there is also evidence for cellular heterogeneity in AT. About 10 to 15% of subjects show a much smaller increase in radiosensitivity compared with other AT patients as measured chromosomally and by colony forming assays.^{11,12}

The clinical features of AT are progressive cerebellar ataxia, oculomotor apraxia, an expressionless face, choreoathetosis, dysarthria, peripheral neuropathy, and ocular telangiectasia.¹ Clinical heterogeneity may be observed. The progressive cerebellar degeneration usually begins in infancy or early

childhood¹ but the age of onset may vary up to the age of about 12 years.¹³ The rate of progress of the disorder may be variable and the presence of bulbar telangiectasia is also variable.

In the present study we describe a large family with two adult cousins with ataxia telangiectasia with a slightly milder clinical course. Genetic linkage analysis has not provided any evidence that the gene for AT in this family is located at 11q22-23.

Case reports

The proband (II.7) was a 25 year old woman and the youngest of eight sibs in a family in which the parents were first cousins and part of a large inbred family. She was unsteady from the age of 3 to 4 years but was still able to run in later childhood, although her walking was ataxic. She was short (> -2 SD for age), had vertical nystagmus, slow saccadic eye movements, slight choreiform movements of the arms, intention tremors, absent ankle reflexes, and flexor plantars. Dysarthria was present, developing in the teenage years. No cutaneous or ocular telangiectasia was evident. CT scan showed enlargement of the fourth ventricle and widening of all cerebellar fissures. AFP and immunoglobulin levels were normal. There was no intellectual impairment.

Her male cousin (II.8) presented at the age of 3 to 4 years with an ataxic gait and constant drooling. At the age of 20 he had progressive unsteadiness in walking, dysarthria, drooling, vertical nystagmus and loss of pursuit movements, choreiform movement of the hands, moderate peripheral ataxia, dysdiadochokinesis, absent ankle reflexes, flexor plantars, decreased sensitivity to vibration and pinprick, and pes cavus. A CT scan showed atrophy of the posterior fossa structures. There was no cutaneous telangiectasia. AFP and immunoglobulin levels were normal.

The remainder of the sibs and the four parents were examined and were normal (fig 1). One cousin of I.2 has Wilson's disease.

Materials and methods

CELLS AND CULTURE CONDITIONS

A normal skin fibroblast strain Con Bu, together with the classical AT fibroblast strain AT3BI and cells from the two patients II.7 and II.8, were grown in Dulbecco's modified Eagles medium (DME) supplemented with 10% FCS (Flow Laboratories), glutamine,

**CRC Laboratories,
Department of
Cancer Studies,
University of
Birmingham,
Birmingham B15 2TJ.**
D Hernandez
C M McConville
M Stacey
A M R Taylor

**Department of
Clinical Genetics,
Churchill Hospital,
Headington, Oxford
OX3 7LT.**
C G Woods

**St George's Hospital,
Blackshaw Road,
London SW17 0QT.**
M M Brown

**ICI Cellmark
Diagnostics, Abingdon
Business Park,
Abingdon OX14 1DY.**
P Shutt
G Rysiecki

Correspondence to
Dr Taylor.

Received 7 April 1992.
Revised version accepted
23 June 1992.

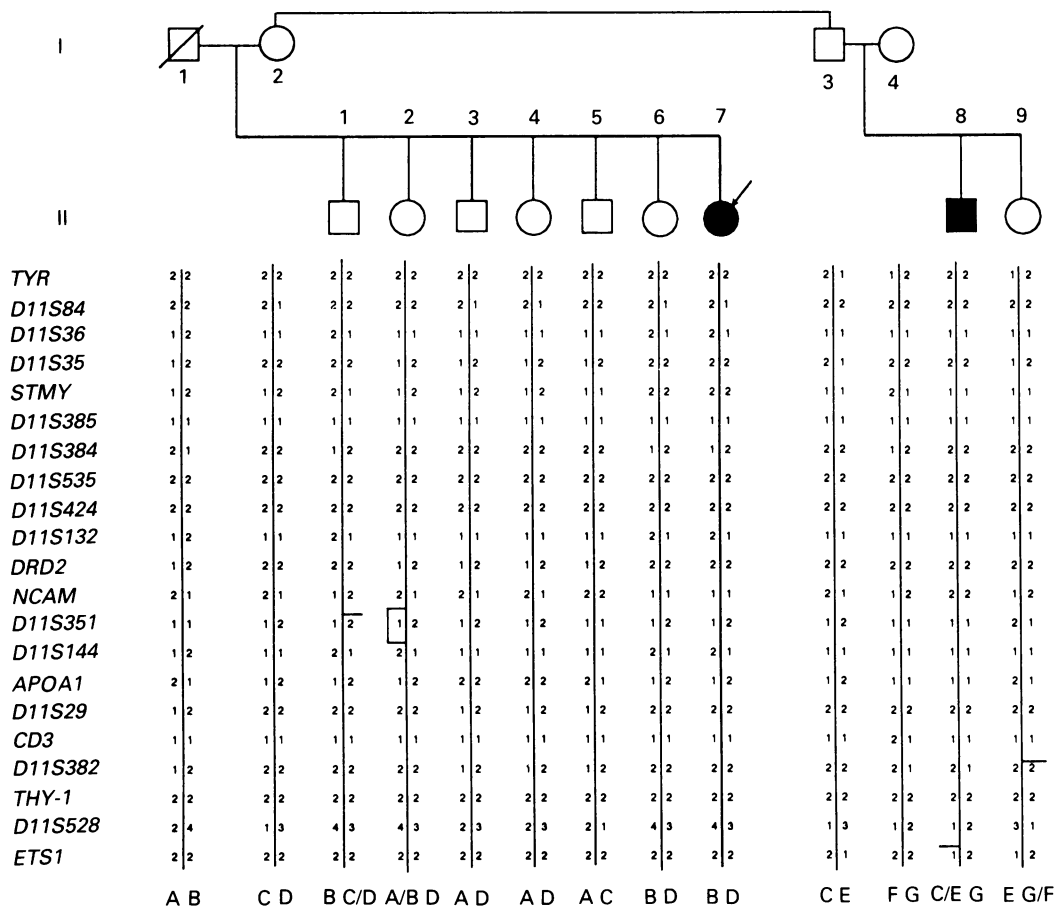


Figure 1 Pedigree of a family showing two cousins with ataxia telangiectasia. Haplotypes are given for all family members across a region of chromosome 11q22-23 between tyrosinase and ETS.

penicillin (100 IU/ml), and streptomycin (100 µg/ml) and incubated at 37°C in 5% CO₂ in air.

COLONY FORMING ASSAYS

Different cell dilutions irradiated with doses of γ rays between 1.00 and 5.00 Gray were seeded on to lethally irradiated feeder layers of the same cells (6 × 10⁴ per 9 cm dish irradiated with 35 Gray γ rays). Cells were left for 14 to 21 days in an incubator to form colonies with a change of medium once a week and were then stained with methylene blue and counted.

HUMAN-HAMSTER CELL HYBRIDS

Mononuclear cells separated from whole blood were fused with hamster a23 cells in 50% PEG 1000 for approximately one minute. Adherent hybrid colonies were selected in HAT medium. (Non-adherent lymphocytes were washed away.)

CHROMOSOME PREPARATIONS

For lymphocyte chromosome preparations 0.4 ml of heparinised whole blood was cultured in 4.0 ml of RPMI 1640 supplemented with 10% FCS, streptomycin, and penicillin. Cultures were fixed at 72 hours. Lymphocytes were also irradiated four hours before harvest at 72 hours (in the G₂ phase of the cell cycle). A Pantak constant potential industrial radio-

graphy unit at 245 keV/12 mA and half value thickness copper filter of 1 mm was used. The filter object distance was 30 cm and the dose rate 1.01 Gray/minute.

For trypsin banded chromosomes, slide preparations were incubated for one hour at 95°C, immersed in Hanks Balanced salt solution (1:1 × 10 HBSS/x 1 HBSS) for 10 minutes, washed in pH 6.8 buffer, immersed in 2.8% trypsin in buffer for about 50 seconds, and rinsed in saline. Metaphases were stained with 20% Leishman's stain in pH 6.8 buffer for about four minutes.

DNA MARKERS

The 11q22-23 markers used are given in table 1. Inserts were isolated from vector sequences by gel purification in all cases. When inserts contained repeated sequences, only a part of the insert corresponding to single copy sequence was used.

DNA PREPARATIONS AND ANALYSIS

DNA used for analysis of polymorphisms was extracted from blood samples according to the method of Kunkel *et al*¹⁴ and digested with restriction enzymes using the manufacturer's recommended conditions. II.6 and II.7 were sampled on two separate occasions and reanalysed. Southern blotting, probe radiolabelling, and hybridisation were carried out as previously described.⁴ Enzymes used to detect polymorphisms are given in table 1.

Table 1 Restriction fragment length polymorphisms detected by chromosome 11q22.23 probes.

Locus	Probe	Enzyme	Alleles (kb)	Frequency
TYR	pTyrs-33	TaqI	2.8/2.4	0.52/0.48
D11S84	p2-7-1D6	TaqI	6.4/4.2	0.28/0.72
D11S36	Φ2-14	RsaI	2.95/2.10	0.59/0.41
D11S35	Φ2-22	MspI/TaqI	4.4/4.2	0.49/0.51
STMY	STMY cDNA	TaqI	4.6/2.1+1.0	0.54/0.46
D11S385	pCJ52-75	MspI	5.5/3.5+2.0	0.89/0.11
D11S384	cCJ52-193	TaqI	8.5/4.3	0.26/0.74
D11S535	pJ12-8	XmnI	3.8/2.8	0.67/0.33
D11S424	pCJ52-77	Msp	7.3/6.8	0.25/0.75
D11S132	CRI-L424	EcoRI	9.0/6.7+2.3	0.54/0.46
DRD2	λhD2DG1	TaqI	6.6/3.7+2.9	0.24/0.76
NCAM	pHFM1	BamHI	9.8/6.3+3.8	0.77/0.23
D11S351	pCJ52-208	MspI	4.0/3.2	0.41/0.59
D11S144	pYNB3-12	MspI	2.8/2.4	0.55/0.45
APOA1	ApoA1	SstII	4.2/3.2	0.96/0.04
D11S29	pL7	TaqI	13.9/10.9/9.2	0.23/0.76/0.01
CD3E	pDJ4	TaqI	8.7/8.1	0.67/0.33
D11S382	cCJ52-12	TaqI	2.8/2.4	0.18/0.82
THY-1	pGSEBg.4	MspI	0.9/0.8	0.28/0.72
ETS	pHE5-4	AvaII	2.4/2.2	0.19/0.81
D11S528	Microsatellite repeat (see Materials and methods)			

The primers used to amplify the microsatellite repeat at the locus *D11S528* were as follows: primer 42026 5' AATGGTGTCCC-CACACATGT, primer 42027 5' TCCTAC-CTACCGAGCTTAAA.¹⁵ Primer 42027 was end labelled with 30 µCi $\gamma^{32}\text{P}$ ATP using 10 U polynucleotide kinase and purified by centrifugation through a sephadex G25 column. Polymerase chain reaction was carried out in a 25 µl volume containing 200 ng of genomic DNA template, 10 pmol each of the labelled and unlabelled primers, 200 µmol/l each of dATP, dCTP, and dTTP, 0.5 U of *Taq* polymerase (Boehringer) and *Taq* polymerase buffer (Boehringer). Samples were processed through 36 cycles consisting of 45 seconds at 94°C (three minutes for cycle 1), 30 seconds at 52°C, and 30 seconds at 72°C (five minutes for cycle 36). Aliquots of the PCR reactions (2 µl) were mixed with 8 µl formamide sample buffer, denatured at 94°C for three minutes, and 3 to 4 µl electrophoresed on a 6% denaturing polyacrylamide sequencing gel. Gels were fixed, dried, and autoradiographed for 15 hours using X-OMAT AR film (Kodak).

LINKAGE ANALYSIS

The two point and multipoint analyses were performed using LINKAGE.¹⁶ Published values for marker allele frequencies (HGM10) were used in linkage calculations. The AT gene frequency was set to 0.003 and the gene assumed to be fully penetrant. A 2:1 ratio of female:male recombination was used as suggested from previous results.⁵

DNA FINGERPRINTING

DNA samples from lymphoblastoid cell lines (5 to 8 µg) were digested overnight with *Hinf*I (New England Biolabs) and analysed on 0.7% agarose gels in TBE containing 0.5 µg/ml ethidium bromide. Gels were run at 75 V until a 2.3 kb marker fragment had migrated 20 cm. Gels were treated with 0.25 mol/l HCl (15 minutes), 0.5 mol/l NaOH, 1.5 mol/l NaCl (30 minutes), and 0.5 mol/l Tris HCl pH 7.5, 3 mol/l NaCl (30 minutes). Blotting on to Hybond N (Amersham) and UV fixation were

carried out according to manufacturers' instructions.

Multilocus probes (MLPs) 33-15 and 33-6¹⁷ were labelled and hybridised to membranes. Following stripping (30 minutes at 45°C in 0.4 mol/l NaOH, followed by 30 minutes at 45°C in 0.2 mol/l Tris pH 7.5, 0.1% SDS, 0.1 × SSC), membranes were rehybridised with cocktails of single locus probes (MS8, MS43A, and pλ3 or MS31 and MS1). Single locus probes were labelled by random hexamer priming. Prehybridisation was in 0.5 mol/l Na₂HPO₄, 7% SDS, 1 mmol/l EDTA, 0.1% BSA for 20 minutes at 65°C, and hybridisation was in 1 × SSC, 6% PEG 6000 for 15 hours at 65°C. Washing was carried out at 65°C in 40 mmol/l Na₂HPO₄ pH 7.2, 0.1% SDS (15 minutes) followed by 0.5 × SSC, 0.01% SDS (2 × 15 minutes) and 0.2 × SSC 0.01% SDS (2 × 15 minutes). Autoradiography was carried out at -70°C using Amersham Hyperfilm MP.^{17a}

Results

In addition to the clearcut clinical features of AT we also show that these patients have the typical cellular features of AT.

PRESENCE OF SPONTANEOUS CHROMOSOME ABNORMALITIES IN LYMPHOCYTES

One of the characteristic features of AT lymphocytes and a useful diagnostic aid is the presence of translocation chromosomes, especially involving chromosomes 7 and 14 in about 10% of circulating T lymphocytes.¹⁸⁻²⁰ In the present patients II.7 and II.8, 4/50 and 4/50 cells respectively showed the presence of translocations or deletions as shown in table 2. Only one of these translocations, t(7;14)(q35;q11) in patient II.8, is typical of AT. The remaining chromosome translocations and deletions are more unusual. The telomeric fusion in patient II.8 is not unusual in AT patients but they are normally associated with the presence of large translocation clones of lymphocytes.²¹ No such clonal development was seen in lymphocytes from these patients. There was no evidence of a constitutional rearrangement or deletion at 11q22-23 in patients II.7 and II.8.

CHROMOSOMAL RADIOSENSITIVITY IN PATIENTS II.7 AND II.8

After exposure of lymphocytes to both 0.5 Gray and 1.0 Gray x rays in the G₂ phase of the cell cycle, both patients showed the large in-

Table 2 Chromosome rearrangements observed in 50 cells from each of two AT homozygotes.

Patient	Rearrangement	No of cells
II.7	46,XX, t(2;6)(p21;pter)	1
	46,XX, del(7)(qter→p15:)	1
	46,XX, -15, -15, t(19;?)	1
	46,XX, t(7;14)(p15;q32)	1
II.8	46,XY, t(7;14)(q35;q11)	1
	46,XY, t(19;?)	1
	46,XY, dic(20;21)(qter;pter)	1
	46,XY, tr(3;4)	1

crease in induced chromatid type damage, compared with a normal control (table 3), which is typical of AT patients. No other family member tested showed the increased radiosensitivity. In particular lymphocytes from unaffected sib II.6 were compared with those from affected sib II.7 after exposure to γ rays and shown not to have increased radiosensitivity (table 3).

COLONY FORMING ABILITY OF CULTURED SKIN FIBROBLASTS FROM PATIENTS II.7 AND II.8 AFTER EXPOSURE TO γ RAYS

The colony forming ability of fibroblasts from patients II.7 and II.8 are shown in fig 2 together with normal fibroblasts and cells from AT3BI, a classical AT patient from complementation group AB. Clearly the survival of cells of II.7 and II.8 is greatly reduced compared with normal and no different from AT3BI.

LOCALISATION OF THE AT GENE IN THIS FAMILY

We typed each family member for 21 markers (table 1) at 11q22-23 and haplotypes together with the family pedigree are given in fig 1. The results were used to compute pairwise lod scores between each marker and AT and were also used in a multipoint analysis. Markers *D11S385*, *D11S535*, *D11S424*, *CD3*, and *THY-1* were uninformative. Significant negative lod scores (≤ -2) were obtained for markers *D11S84*, *STMY/D11S85*, *NCAM/DRD2*, *D11S351/D11S144*, and *ETS1*. The highest pairwise lod scores were obtained with *D11S35* ($Z=0.41$ at $\theta=0$), *D11S36* ($Z=0.26$ at $\theta=0$), and *D11S132* ($Z=0.26$ at $\theta=0$). Location scores (fig 3) showed significant negative values when AT was placed at $\theta=0$ from *D11S351/D11S144*, *NCAM/DRD2*, and *STMY/D11S385*. For the intervals in between scores were mostly negative, only exceeding zero when close to *THY-1*. The reason for this could be the unformativity of this marker and the large interval between *ETS1* and *THY-1*. Using the more distal marker *D11S528*, which has been mapped between *ETS* and *THY-1*, we could show that II.6 and II.7 had identical alleles, which were

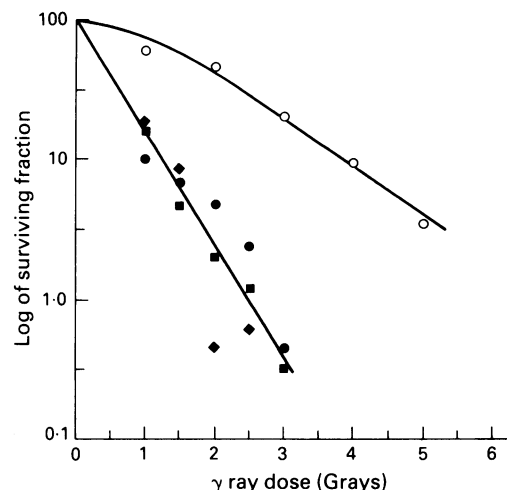


Figure 2 Survival of skin fibroblasts from the two cousins II.7 (filled circles) and II.8 (diamonds) after exposure to γ rays. Survival of cells from group A AT patient AT3BI (filled squares) and a control (open circles) are also shown.

different from II.8. This suggests there is indeed no linkage of AT with *THY-1* or the more distal marker *D11S528* in this family.

If the AT gene were on this region of chromosome 11 in this family we would expect (1) that patient II.7 would have a unique haplotype around the AT gene compared with her unaffected sibs, and (2) I.2 and I.3 would share a common region of chromosome 11 near the AT gene and this same chromosome would be present in the two patients. Inspection of the haplotypes showed the reasons for the negative lod scores obtained, in that patient II.7 and her unaffected sib II.6 have identical haplotypes. The two affected cousins, II.7 and II.8, also show very little haplotype similarity. Haplotype C shown by I.2 and I.3 has only been inherited by II.8 and not by II.7. Neither of the predictions were therefore observed. Since all possible haplotype combinations are represented (in the larger side of the family) in normal sibs the AT gene is unlikely to be in phase with either C or D maternal haplotypes. There is no evidence to support the hypothesis that the AT gene is located in this region of chromosome 11 in this family.

Other explanations for these observations have been considered, but are regarded as unlikely. (1) The possibility of a mix up in the bloods was eliminated by repeating the typings of II.6 and II.7 on DNA from a second blood sample. The duplicate samples confirmed that both sibs have identical haplotypes. In addition, DNA from sibs II.6 and II.7 were shown to be quite distinct since the sibs could be shown to have inherited different alleles for non-chromosome 11 markers. The maternally derived haplotype was checked by isolating the maternal chromosome D from II.4 in a human/hamster hybrid cell line and the typing repeated. This yielded the same alleles as the derived haplotype. (2) The possibility of non-paternity was also considered. The use of various multilocus probes, biallelic probes, and hypervariable probes suggested that this was unlikely. Multilocus probes were used to calculate percentage band share. The expected

Table 3 Induced chromosome damage following exposure at G_2 to ionising radiation.

Patient	No of cells	r	dic	f	ctg	ctb	csg	tri	qr
<i>After exposure to 0.5 Gray x rays</i>									
ATII.7	50	0	0	9	64	14	0	2	4
ATII.8	50	0	1	4	44	19	0	0	0
Normal	50	0	0	0	8	0	0	0	0
<i>After exposure to 1.0 Gray x rays</i>									
ATII.7 (i)	50	0	0	9	107	52	0	7	2
(ii)	50	0	0	8	110	38	0	5	1
ATII.8	50	0	2	5	88	29	0	7	2
II.1	50	0	0	1	8	0	0	0	0
II.3	50	0	0	0	9	0	0	0	0
II.4	50	0	0	0	7	2	0	0	0
AT 3BI	50	1	2	7	58	40	0	2	4
Normal	50	0	0	1	8	0	0	0	0
<i>After exposure to 1.0 Gray γ rays</i>									
ATII.6	20	0	0	0	16	5	0	0	0
ATII.7	20	0	0	3	46	32	0	3	1

r = rings, dic = dicentric, f = fragment, ctg = chromatid gaps, ctb = chromatid breaks, csg = chromosome gaps, tri = triradials, qr = quadriradials. (i) and (ii) are different sample times.

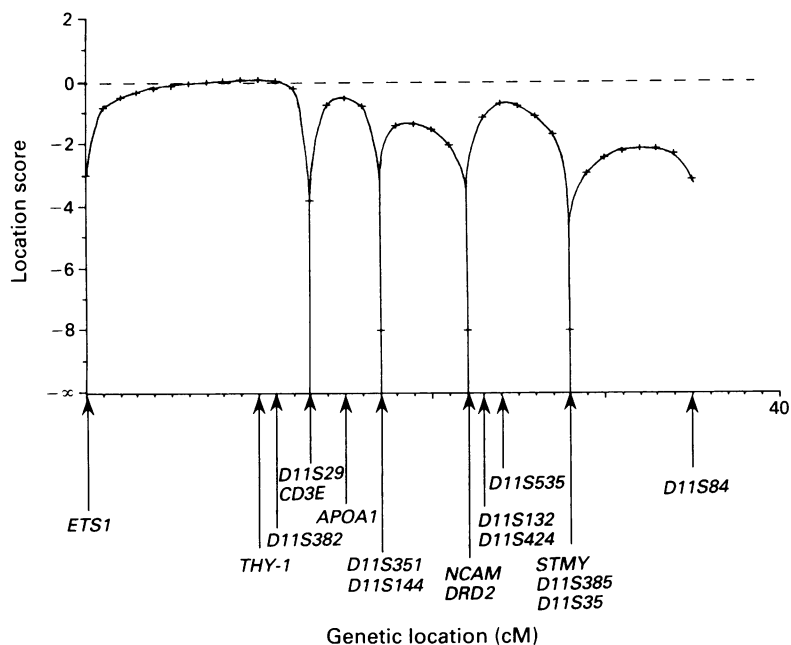


Figure 3 Location scores for a seventeen point map. (*D11S528, D11S384, D11S36, and tyrosinase were not included because of lack of information on their precise location.*)

value for first degree relatives on average is 62.5%, II.6 and II.7 shared 64.0% of their bands, which is consistent with a first degree relationship such as full sibs. The single locus analysis showed the presence of 17 bands within the sibship from the five probes used. If all the sibs share the same parents we would expect a maximum of 20 bands. The presence of more than 20 bands would indicate that one or more of the sibship had a different parent from the rest. Overall, these results support the hypothesis that II.6 and II.7 are full sibs. We cannot absolutely rule out non-paternity but clearly this is very unlikely. A major disparity, however, between the affected cousins is that II.7 does not show haplotype C, which is a maternal chromosome. (3) There is a possibility that there is a submicroscopic deletion in one of the chromosomes of II.7 which would make her hemizygous for the AT allele, while her normal sib, II.6, has a normal allele, giving her a normal phenotype. An alternative might be that a rare double recombination might have occurred between the maternal chromosomes, whereby II.7 inherited part of chromosome C with the mutant allele. Both a double recombination and deletion would explain the apparent haplotype identity between II.6 and II.7 and lack of similarity between II.7 and II.8. The combination of B/C is, however, already observed in sib II.1 for the region above *NCAM/DRD2* with no phenotypic effect. The combination B/C below *NCAM/DRD2* is, however, not seen in any of the normal sibs, and so a rare genetic event such as a double recombination or gene conversion might have occurred in this region.

It is striking, however, that two observations consistent with the AT gene being on chromosome 11 in this inbred family are (1) that both

of the sibs I.2 and I.3 with AT children share the same chromosome (C in I.2), and (2) that patient II.8 is homozygous for all 16 markers between tyrosinase and *CD3* inclusively. On the smaller side of the family, the haplotypes are consistent with the gene being on chromosome 11.

Discussion

The two AT patients described here are clinically unusual in still being ambulatory at the ages of 25 and 20 respectively, even though ataxic gait was first noted between the ages of 3 and 4 in both. Neither patient had evidence of cutaneous or bulbar telangiectasia, but all the remaining clinical features of AT were present: progressive cerebellar ataxia, dysarthria, flexor plantar responses, choreoathetoid movements, odd eye movements, an expressionless face, drooling (in II.8), and short stature (in II.7). AFP levels were normal in both patients. Qualitatively some of the spontaneous chromosome aberrations in both patients were different from other patients, but increased radiosensitivity was typical of AT patients. Both the cellular features and clinical features were therefore still typical of ataxia telangiectasia.

In this inbred family it was expected that both affected subjects would show similar haplotypes and a high degree of homozygosity. Ninety percent homozygosity was observed in patient II.8 but not in II.7. Patient II.8 inherited chromosome C, which both parents of the AT children also shared but was not present in II.7. In the larger side of the family, II.7 showed the same haplotype as a phenotypically normal sib, II.6. In 50 families haplotyped this is the only instance we have encountered where an apparently identical haplotype in unaffected and affected subjects cannot easily be explained on the basis of a single recombination event⁵ (unpublished results). The proband II.7 has not inherited the maternal chromosome C which in her cousin appears to contribute to AT, but instead has a different haplotype. One explanation of this is that she is homozygous for a gene at a different locus, and therefore the extended family may be carrying more than one mutation for AT. If separate loci were responsible for the AT seen in this family then phenotypic differences might be expected between the cousins. Minor differences, for example, height and drooling, exist, but the similarities appear stronger, and this especially applies to the cellular radiosensitivity.

The possibility of a rare double recombination between the maternal chromosomes would theoretically explain the haplotype similarity between II.6 and II.7 and the difference from II.8. The recombination would have to occur telomeric to *NCAM/DRD2* because the combination B/C in this region is the only haplotype not presented in an unaffected subject. This is of interest because haplotype analysis of other reported families probably places AT group AB and group C centromeric to *NCAM/DRD2*.⁵⁷ Some evidence suggests that the locus for complemen-

tation group D patients may be in the more telomeric region¹⁰ between markers *D11S147* and *D11S133*, which are distal to *THY-1*.⁷ We do not know if our patients II.7 or II.8 belong to complementation group D but our evidence suggests that the AT gene in this family is not linked to *THY-1* or *D11S528* distal to it.

The AT homozygotes in this family appear to show a slower or less severe cerebellar degeneration compared with many other patients as judged by their degree of mobility at their age. In the family described here clinical features are milder than usual but with the presence of a typically high level of radiosensitivity. Other patients appear to have smaller increases in radiosensitivity as measured chromosomally or by cell survival, but as severe or possibly more severe cerebellar ataxia than seen here in patients II.7 and II.8. There does not appear to be a quantitative relationship between the degree of cerebellar ataxia and the level of radiosensitivity in AT patients. It is possible therefore that other genes may in some circumstances selectively modify either the radiation response or the cerebellar degeneration in different AT patients. A similar degree of radiosensitivity is seen in patients with Nijmegen breakage syndrome (NBS), but in the absence of any cerebellar ataxia.²² Cells from NBS patients, however, complement AT patients' cells suggesting the presence of a different gene producing increased radiosensitivity.²² There may therefore be several genes producing a phenotype with increased radiosensitivity with or without ataxia.

At present the simplest way in which to interpret the observations presented here is that in this family the gene for AT is not on chromosome 11q22-23.

We thank the Cancer Research Campaign and the Ataxia Telangiectasia Society of UK for financial support. DH holds a CRC studentship. We also thank Janet Gunn for typing and Sue Williams for photography. Multilocus probes 33.6 and 33.15 are the subject of patent no GBA 2166445 and worldwide patents (pending) for commercial diagnostic use.

1 Boder E. Ataxia telangiectasia: an overview. In: Gatti RA, Swift M, eds. *Ataxia telangiectasia: genetics, neuropathology and immunology of a degenerative disease of childhood*. New York: Alan R Liss, 1985:1-63.

- 2 Spector BD, Filipovich AH, Perry GS, Kersey JH. Epidemiology of cancer in ataxia telangiectasia. In: Bridges BA, Harnden DG, eds. *Ataxia telangiectasia. A cellular and molecular link between cancer, neuropathology and immune deficiency*. New York: John Wiley, 1982:103-38.
- 3 Gatti RA, Berkel I, Boder E, et al. Localisation of an ataxia telangiectasia gene to chromosome 11q22-23. *Nature* 1988;336:577-80.
- 4 McConville CM, Woods CG, Farrall M, Metcalfe JA, Taylor AMR. Analysis of 7 polymorphic markers at chromosome 11q22-23 in 35 ataxia telangiectasia families; further evidence of linkage. *Hum Genet* 1990;85:215-20.
- 5 McConville CM, Formstone CJ, Hernandez D, Thick J, Taylor AMR. Fine mapping of the chromosome 11q22-23 region using PFGE, linkage and haplotype analysis: localisation of the gene for ataxia telangiectasia to a 5cM region flanked by NCAM/DRD2 and STMY/CJ52.75, Φ 2.22. *Nucleic Acids Res* 1990;11:4335-43.
- 5a Murnane JP, Painter RB. Complementation of the defects of DNA synthesis in irradiated and unirradiated ataxia telangiectasia cells. *Proc Natl Acad Sci USA* 1982;79:1960-3.
- 6 Ziv Y, Rotman G, Frydman M, et al. The A-TC (ataxia telangiectasia complementation group C) locus localises to 11q22-23. *Genomics* 1991;9:373-5.
- 7 Sobel E, Lange E, Jaspers NGJ, et al. Ataxia telangiectasia: linkage evidence for genetic heterogeneity. *Am J Hum Genet* 1992;50:1343-8.
- 8 Komatsu K, Kodama S, Okumura Y, Koi M, Oshimura M. Restoration of radiation resistance in ataxia telangiectasia cells by the introduction of normal human chromosome 11. *Mutat Res* 1989;253:59-63.
- 9 Lambert C, Schultz RA, Smith M, et al. Functional complementation of ataxia telangiectasia group D (A-TD) cells by microcell mediated chromosome transfer and mapping of the A-TD locus to a region 11q22-23. *Proc Natl Acad Sci USA* 1991;88:5907-11.
- 10 Kapp LN, Painter RB, Yu LC, et al. Cloning of a candidate gene for ataxia telangiectasia group D. *Am J Hum Genet* 1992;51:45-54.
- 11 Cox R, Hosking P, Wilson J. Ataxia telangiectasia, evaluation of radiosensitivity in cultured skin fibroblasts as a diagnostic test. *Arch Dis Child* 1978;53:386-90.
- 12 Taylor AMR, Flude E, Laher B, et al. Variant forms of ataxia telangiectasia. *J Med Genet* 1987;24:669-77.
- 13 Woods CG, Taylor AMR. Ataxia telangiectasia in the British Isles: the clinical and laboratory features of 70 affected individuals. *Q J Med* 1992;298:169-79.
- 14 Kunkel LM, Smith KP, Bayer SH, et al. Analysis of human Y chromosome specific reiterated DNA in chromosome variants. *Proc Natl Acad Sci USA* 1975;74:1245-9.
- 15 Hauge XY, Evans GA, Litt M. Dinucleotide repeat polymorphism at the D11S528 locus. *Nucleic Acids Res* 1991;19:1964.
- 16 Lathrop GM, Lalouel JM, Julier C, Ott J. Strategies for multi-locus linkage analysis. *Proc Natl Acad Sci USA* 1984;81:3443-6.
- 17 Jeffreys AJ, Wilson V, Thein SL. Hypervariable minisatellite regions in human DNA. *Nature* 1985;314:67-73.
- 17a Ferrie RM, Smith H, Downes EA, McKechnie D, Little S. Repeat unit multipriming and hybridisation, a novel method for the production of DNA fingerprints using minisatellite probes. *Nucleic Acids Res* 1991;19:2505.
- 18 Hecht F, McCaw BK, Koler RD. Ataxia telangiectasia. Clonal growth of translocation lymphocytes. *N Engl J Med* 1973;289:286-91.
- 19 Oxford JM, Harnden DG, Parrington JM, Delhanty JDA. Specific chromosome aberrations in ataxia telangiectasia cells. *J Med Genet* 1975;12:251-62.
- 20 Taylor AMR. Cytogenetics of ataxia telangiectasia. In: Bridges BA, Harnden DG, eds. *Ataxia telangiectasia. A cellular and molecular link between cancer, neuropathology and immune deficiency*. New York: John Wiley, 1982:53-82.
- 21 Taylor AMR, Metcalfe JA, McConville CM. Increased radiosensitivity and the basic defect in ataxia telangiectasia. *Int J Radiat Biol* 1989;56:667-84.
- 22 Jaspers NGJ, Gatti RA, Baan C, Linssen PCML, Bootsma D. Genetic complementation analysis of ataxia telangiectasia and Nijmegen breakage syndrome in a survey of 50 patients. *Cytogenet Cell Genet* 1988;49:259-63.