

Ruby SM Tsang, Mark Joy, Heather Whitaker, James P Sheppard, John Williams, Julian Sherlock, Nikhil Mayor, Bernardo Meza-Torres, Elizabeth Button, Alice J Williams, Debasish Kar, Gayathri Delanerolle, Richard McManus, FD Richard Hobbs and Simon de Lusignan

## Development of a modified Cambridge Multimorbidity Score for use with SNOMED CT:

an observational English primary care sentinel network study

### Abstract

#### Background

People with multiple health conditions are more likely to have poorer health outcomes and greater care and service needs; a reliable measure of multimorbidity would inform management strategies and resource allocation.

#### Aim

To develop and validate a modified version of the Cambridge Multimorbidity Score in an extended age range, using clinical terms that are routinely used in electronic health records across the world (Systematized Nomenclature of Medicine – Clinical Terms, SNOMED CT).

#### Design and setting

Observational study using diagnosis and prescriptions data from an English primary care sentinel surveillance network between 2014 and 2019.

#### Method

In this study new variables describing 37 health conditions were curated and the associations modelled between these and 1-year mortality risk using the Cox proportional hazard model in a development dataset ( $n = 300\,000$ ). Two simplified models were then developed – a 20-condition model as per the original Cambridge Multimorbidity Score and a variable reduction model using backward elimination with Akaike information criterion as the stopping criterion. The results were compared and validated for 1-year mortality in a synchronous validation dataset ( $n = 150\,000$ ), and for 1-year and 5-year mortality in an asynchronous validation dataset ( $n = 150\,000$ ).

#### Results

The final variable reduction model retained 21 conditions, and the conditions mostly overlapped with those in the 20-condition model. The model performed similarly to the 37- and 20-condition models, showing high discrimination and good calibration following recalibration.

#### Conclusion

This modified version of the Cambridge Multimorbidity Score allows reliable estimation using clinical terms that can be applied internationally across multiple healthcare settings.

#### Keywords

general practice; medical record systems, computerised; mortality; multimorbidity; population surveillance; Systematized Nomenclature of Medicine – Clinical Terms.

### INTRODUCTION

Many epidemiological analyses, including measuring the impact of disease or the effectiveness of therapies, require a single measure of comorbidity. People with multiple health conditions ('multimorbidity') are likely to have poorer health outcomes and require more intensive treatment and monitoring, placing significant and increasing demand across the spectrum of health services.<sup>1</sup> Evaluating multimorbidity is important in allocating resources, optimising management strategies, and facilitating research. This can be achieved through composite scores that quantify the effect of specific comorbid conditions on health service use, unplanned hospital admission, and mortality.<sup>2,3</sup>

There have been a number of approaches to measuring comorbidity. The Charlson Comorbidity Index (CCI) is a commonly used composite morbidity score with condition weightings based on mortality.<sup>2</sup> However, the management of multimorbidity has

seen a paradigm shift towards a greater focus on primary care and non-hospital management of disease;<sup>4-7</sup> the CCI, having been designed for use in secondary care and based on secondary care coding systems, is not ideal for use in primary care. Moreover, the contribution of its 12 selected comorbidities since validation in 1987 has changed, requiring the index to be re-evaluated and re-validated. Other approaches have included the number of comorbidities, although the weakness of this is the lack of weighting, which captures variation in the influence of certain conditions.

To improve on these limitations, the Cambridge Multimorbidity Score (CMMS) was developed in 2020 for use in primary care practices, using data from the Clinical Practice Research Datalink (CPRD).<sup>8</sup> The CMMS used 37 conditions (and 20 in its simplified form) to predict primary care consultations, unplanned hospital admissions, and death as

**RSM Tsang** (ORCID: 0000-0002-2520-526X), BLibStud (Adv), BLibStud (Hons), MBMSc, PhD, postdoctoral researcher; **M Joy** (ORCID: 0000-0002-4974-3724), BSc, PhD, senior researcher; **JP Sheppard** (ORCID: 0000-0002-4461-8756), BSc, PhD, PG Cert, associate professor; **J Williams** (ORCID: 0000-0002-6118-0434), MBChir, MSc, senior research fellow; **J Sherlock** (ORCID: 0000-0001-7427-1936), BA, SQL developer; **B Meza-Torres** (ORCID: 0000-0001-6551-5484), MBBS, MSc, MA, PhD, postdoctoral researcher; **E Button** (ORCID: 0000-0003-0777-2508), BA, MSc, practice liaison officer and research facilitator; **AJ Williams** (ORCID: 0000-0003-4612-1468), BA, MSt, PhD, practice liaison officer and research facilitator; **D Kar** (ORCID: 0000-0002-1524-1312), MSc, FRCP, FRCGP, senior clinical researcher; **G Delanerolle** (ORCID: 0000-0002-9628-9245), MBBS, MSc, senior project manager; **R McManus** (ORCID: 0000-0003-3638-028X), MA, PhD, FRCP, FRCGP, professor of primary care; **FD Richard Hobbs** (ORCID: 0000-0001-7976-7172), CBE, MA, FRCP (London), FESC, FRCGP, FMedSci, Nuffield professor of primary care health sciences, Nuffield Department of Primary

Care Health Sciences, University of Oxford, Oxford. **H Whitaker** (ORCID: 0000-0001-5833-1863), BSc, PhD, senior statistician, Public Health England, London. **N Mayor** (ORCID: 0000-0003-2681-2501), MBBS, academic foundation doctor, Royal Surrey NHS Foundation Trust, Guildford. **S de Lusignan** (ORCID: 0000-0002-8553-2641), MSc, MD, FRCGP, FBCS, FHEA, CIP, professor of primary care and clinical informatics, Nuffield Department of Primary Care Health Sciences, University of Oxford, Oxford; director, Royal College of General Practitioners (RCGP) Research and Surveillance Centre, RCGP, London.

#### Address for correspondence

Simon de Lusignan, Nuffield Department of Primary Care Health Sciences, University of Oxford, Oxford OX2 6GG, UK.

**Email:** [simon.delusignan@phc.ox.ac.uk](mailto:simon.delusignan@phc.ox.ac.uk)

**Submitted:** 9 May 2022; **Editor's response:** 20 July 2022; **final acceptance:** 7 October 2022.

#### ©The Authors

This is the full-length article (published online 3 May 2023) of an abridged version published in print. Cite this version as: **Br J Gen Pract 2023**; DOI: <https://doi.org/10.3399/BJGP.2022.0235>

### How this fits in

Multimorbidity is associated with poorer health outcomes and greater care needs in those with COVID-19, flu, and other infections. A reliable measure of multimorbidity, such as the Cambridge Multimorbidity Score (CMMS), is needed to support infectious disease epidemiology and other research based on routine data that have their key data recorded using SNOMED CT (Systematized Nomenclature of Medicine – Clinical Terms). A modified version of the CMMS was developed and validated using SNOMED CT, which is more widely used internationally than the Read terminology used for the original version and with an extended age range that the CMMS can be applied to. The unadjusted 21-condition model performed similarly to the original CMMS in predicting mortality with excellent discrimination and reasonable calibration.

primary outcomes. The weighting-based outcome-specific scores of the CMMS are reported to outperform the CCI across all three primary outcomes. However, the original analysis excluded patients aged <21 years, which may limit its validity and utility in studies that include individuals outside of this age range.

The CMMS was originally developed and validated using comorbidities defined with Read clinical terminology, a thesaurus of clinical terms used to record patient findings and procedures in computerised medical records (CMR).<sup>9</sup> Since April 2016 the Read terminology has not been updated. It was then retired from clinical use in English general practice in 2018 and replaced by Systematized Nomenclature of Medicine – Clinical Terms (SNOMED CT),<sup>10</sup> which is used in electronic health records across the world. Potential benefits of SNOMED CT include its comprehensive nature, its capability to be machine processed, its precise collection of clinical terminology, as well as its international implementation.

During the COVID-19 pandemic it was repeatedly reported that comorbid conditions can have a detrimental impact on the severity and prognosis of COVID-19, and individuals with underlying comorbidities are at much higher risk of severe outcomes and mortality.<sup>11</sup> It is therefore imperative that surveillance and epidemiological studies account for such comorbidities. In order to support the surveillance activity of Oxford-Royal College of General Practitioners (RCGP) Research and Surveillance Centre (RSC),

it is essential to have a single comorbidity index that can be used in these studies. The current study was conducted to develop and validate a modified version of the CMMS with an extended age range, which is solely based on SNOMED CT, and using routinely collected primary care data from the RSC.

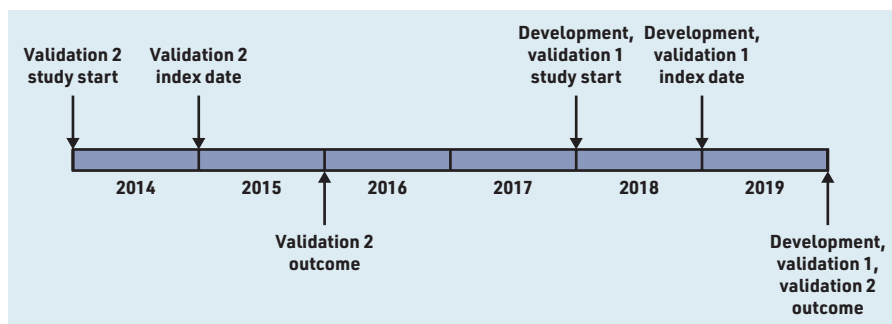
### METHOD

#### Data source and variables

The study used pseudonymised CMR data from the RSC sentinel network database, which is recruited to be representative of the general population.<sup>12</sup> The UK has registration-based primary care in which each patient registers with a single general practice. All patients who were registered for ≥12 months before the study index date (study start date) and aged ≥16 years at the study index date for each model were included.

The cohort was split into three separate datasets (development set, validation set 1 with synchronous outcome, and validation set 2 with synchronous and asynchronous outcomes) (Figure 1) using block randomisation in the ratio of 2:1:1. To minimise the effect of random variation between practices on mortality, the cohort was separated into four subsets using the best linear unbiased estimator from a mixed-effects logistic regression with age (standardised) and sex fixed effects and a practice random effect, before block randomisation (see Supplementary Figure S1). In the current study the authors further applied similar inclusion/exclusion criteria for selecting individuals to those described in the original analysis (see Supplementary Figure S2).<sup>8</sup> The authors then randomly sampled 300 000, 150 000, and 150 000 individuals from the three datasets (development set, validation set 1, and validation set 2, respectively).

The starting variables underlying the conditions used in the original development and validation were carefully curated by the authors, which was based on prior work on the epidemiology of multimorbidity in the UK,<sup>1,13</sup> with the same definitions and/or prescribing before the index date applied to SNOMED CT rather than to Read v2 (see Supplementary Table S1). The exact same set of 46 starting variables was built using 66 variables within the authors' Themes, Access, Dynamic Data Services library, and the names from the original CMMS were retained. The authors then applied the same logic and combined the anxiety and depression variables as described in Payne *et al*<sup>8</sup> to yield 37 variables. Age and sex were



**Figure 1.** Study index dates and study start dates for the development and validation cohorts (see main text for more detailed description).

included as covariates, with age censored at 95 years. The focus, for this study, was only on mortality as an outcome measure.

In this study variable curation is only carried out by practising clinicians with either the initial curation or quality assurance carried out by a practising GP. It involves searching for the relevant high-level concept clinical terms, called 'supertypes', within SNOMED CT. Clusters or individual supertypes or subtypes were excluded using a custom-built 'helper tool' within a secure network. The authors recorded the project the variable was curated for, the date, the data curator, and who conducted the quality assurance process and when; all recorded and retained on a secure digital environment. The clinical data curation team met weekly to ensure consistency across the variable-curation process.

The following variables were extracted: pseudonymised practice and patient

identifier (ID), sex, date of birth, date of death, dates of registration and deregistration with a general practice, and the 37 conditions.

### Statistical analyses

Two time-to-mortality models were constructed using Cox proportional hazards in the development dataset. First, a model with all 37 conditions as binary indicators, with sex, age (in 10 years), and a quadratic age term included as covariates was run. Then a model was run using the 20 conditions that were considered the most important in Payne *et al*<sup>8</sup> based on effect size, prevalence, and a combination of effect size and prevalence. Finally, variable reduction was conducted by entering all predictors into a model, and then using backward elimination with the Akaike information criterion (AIC)<sup>14</sup> as the stopping criterion with the 'fastbw' function in the rms package.

Model discrimination was evaluated using pseudo- $R^2$ , Somers'  $D$ , and Harrell's  $C$ .<sup>15</sup>  $R^2$  is a measure of explained variation in the model. Somers'  $D$  quantifies the prognostic separation between observations with high and low predicted risk. Harrell's  $C$  is the ratio of concordant pairs of observations to the number of comparable pairs; it estimates the concordance probability that larger predicted risks are associated with lower survival probabilities, when comparing the rankings of a pair of independent observations. Model

**Table 1.** Descriptive statistics for the three datasets sampled from the Oxford–Royal College of General Practitioners Research and Surveillance Centre

Characteristic	Development (2019) (n = 300 000)	Validation 1 (2019) (n = 150 000)	Validation 2 (2015) (n = 150 000)
Sex, male, n (%)	148 672 (49.56)	74 463 (49.64)	74 527 (49.68)
Age at index date, year			
Mean (SD)	48.44 (19.22)	48.56 (19.39)	47.84 (19.14)
Range	16–95	16–95	16–95
65–84, n (%)	59 897 (19.97)	30 372 (20.25)	28 668 (19.11)
≥85, n (%)	9390 (3.13)	4844 (3.23)	4558 (3.04)
Number of conditions			
Mean (SD)	1.35 (1.85)	1.37 (1.87)	1.28 (1.78)
Range	0–15	0–15	0–14
0, n (%)	138 076 (46.03)	68 928 (45.95)	71 635 (47.76)
1, n (%)	66 053 (22.02)	32 377 (21.58)	32 400 (21.60)
≥2, n (%)	95 871 (31.96)	48 695 (32.46)	45 965 (30.64)
Deaths in follow-up, n	3019	1433	1370/6973
Follow-up time, days, mean	351.5	352.3	353.2/1564
People with complete follow-up, n (%)	278 494 (92.83)	139 670 (93.11)	140 513 (93.68)/109 612 (73.07)
Total person-years <sup>a</sup>	288 722.4	144 679.6	145 041.6/642 341.4
Mortality rate per 1000 person-years	10.46	9.90	9.45/10.86

<sup>a</sup>Calculated person-days then divided by 365.25. SD = standard deviation.

**Table 2. Prevalence of the 37 conditions in the development dataset, and the weights for the conditions included in the final model**

Condition	Prevalence, n (%) (n = 300 000)	Weight
Hypertension	62 854 (20.95)	–
Anxiety or depression	41 744 (13.91)	0.3242
Painful condition	41 461 (13.82)	0.4455
Hearing loss	27 083 (9.03)	–
Asthma	22 348 (7.45)	–
Irritable bowel syndrome	20 671 (6.89)	-0.2037
Diabetes	20 232 (6.74)	0.2947
Thyroid disorders	18 732 (6.24)	–
Coronary heart disease	15 887 (5.30)	–
Chronic kidney disease	13 226 (4.41)	0.2137
Diverticular disease of intestine	10 502 (3.50)	–
Disorder of prostate	10 397 (3.47)	-0.1878
Atrial fibrillation	9105 (3.03)	0.3349
Alcohol problems	9064 (3.02)	0.7922
COPD	7542 (2.51)	0.7022
Stroke and TIA	7415 (2.47)	–
Rheumatoid arthritis	7352 (2.45)	–
Constipation	6311 (2.10)	0.3830
Cancer	5924 (1.97)	1.2026
Peptic ulcer disease	5071 (1.69)	–
Chronic sinusitis	4995 (1.67)	–
Heart failure	4686 (1.56)	0.5052
Psychoactive substance misuse	4139 (1.38)	0.4493
Blindness and low vision	3823 (1.27)	–
Dementia	3709 (1.24)	0.9380
Psoriasis or eczema	2794 (0.93)	–
Epilepsy	2580 (0.86)	0.4775
Schizophrenia or bipolar disorder	2402 (0.80)	0.4825
Inflammatory bowel disease	2371 (0.79)	–
Chronic liver disease and viral hepatitis	2345 (0.78)	0.6862
Anorexia or bulimia	2222 (0.74)	–
Migraine	1594 (0.53)	–
Bronchiectasis	1530 (0.51)	–
Learning disability	1290 (0.43)	0.6373
Parkinsonism	920 (0.31)	0.5462
Multiple sclerosis	853 (0.28)	0.7616
Peripheral vascular disease	650 (0.22)	0.3346

COPD = chronic obstructive pulmonary disease. TIA = transient ischaemic attack.

calibration was assessed using a calibration curve, and recalibration was performed using resampling cross-validation to correct for overfitting with the 'calibrate' function in the rms package. Using model results from the development dataset, then performance of the models was evaluated in two validation datasets with synchronous and asynchronous outcomes (that is, 1-year

follow-up in validation set 1, and 1-year and 5-year follow-ups in validation set 2 as visualised in Figure 1).

All data preparation and analyses were conducted in R (version 4.1.0),<sup>16</sup> using the following packages: ggplot2 (version 0.9.1),<sup>17</sup> lme4 (version 1.1-27),<sup>18</sup> lubridate (version 1.7.10),<sup>19</sup> randomizr (version 0.20.0),<sup>20</sup> rms (version 6.2-0),<sup>21</sup> survival (version 3.2-11),<sup>22,23</sup> tableone (version 0.12.0),<sup>24</sup> and tidyverse (version 1.3.1).<sup>25</sup>

### Ethical considerations

A single comorbidity measure was required for the authors' surveillance activity for Public Health England; its surveillance activities are now subsumed into the new UK Health Security Agency. Pseudonymised data for surveillance are extracted from volunteer general practices under Regulation 3 of the Health Service (Control of Patient Information) Regulations 2002 for health protection.

All potentially identifiable data were pseudonymised as close to source as possible and not made available to researchers; data were not extracted for patients who opted out of data sharing. All data are stored and processed at the Oxford-RCGP Clinical Informatics Digital Hub, University of Oxford. This is listed by Health Data Research UK as a trusted research environment and meets the standards of NHS Digital's Data Security and Protection toolkit (organisation code: EE133863-MSD-NDPCHS).

### RESULTS

The three datasets were generally comparable in distribution of age, sex, number of conditions, and follow-up time (Table 1). Individuals in validation set 2 were slightly younger and healthier as a result of the earlier study index date.

The prevalence of the included 37 conditions in the development dataset is presented in Table 2. Both the rates and the rankings show similar patterns to those observed in CPRD.<sup>8</sup> The top 20 conditions by prevalence and by effect size are listed in Supplementary Table S2.

Discrimination of 1-year mortality using the 37-condition model were high in both validation sets 1 and 2 (Harrell's C 0.92 for both models), and discrimination of 5-year mortality was only marginally worse in the validation dataset (Harrell's C 0.91) (Table 3). Prediction of 1-year and 5-year mortality using the original simplified 20-condition model showed a similar pattern.

## Funding

The UK Health Security Agency (UKHSA) is the principal funder of the Oxford-Royal College of General Practitioners (RCGP) Research and Surveillance Centre (RSC). While no specific funding was allocated for this project, a single multimorbidity measure was required by UKHSA. James P Sheppard is funded by the Wellcome Trust/Royal Society via a Sir Henry Dale Fellowship (reference: 211182/Z/18/Z). James P Sheppard also receives funding via a National Institute for Health Research (NIHR) Oxford Biomedical Research Centre Senior Fellowship. This publication presents independent research supported by the NIHR. The views expressed are those of the author(s) and not necessarily those of the NHS, the NIHR, or the Department of Health and Social Care.

## Ethical approval

The Cambridge Multimorbidity Score variable was created to support the authors' work with UKHSA, providing a single measure of comorbidity, primarily for vaccine effectiveness studies. The authors' UKHSA role in disease surveillance is approved by the Caldicott Guardian of UKHSA, and approved under Regulation 3 of The Health Service (Control of Patient Information) Regulations 2002.

**Table 3. Model discrimination, as assessed using pseudo- $R^2$ , Somers'  $D$ , and Harrell's  $C$**

Statistic	37-condition model	20-condition model	Reduced model
Pseudo- $R^2$	0.153	0.152	0.153
Somers' $D$	0.851	0.847	0.851
Harrell's $C^a$			
Development	0.9253 (0.0022)	0.9236 (0.0022)	0.9255 (0.0021)
Validation 1	0.9200 (0.0035)	0.9184 (0.0035)	0.9206 (0.0035)
Validation 2, 1-year follow-up	0.9204 (0.0033)	0.9182 (0.0033)	0.9203 (0.0033)
Validation 2, 5-year follow-up	0.9071 (0.0016)	0.9055 (0.0016)	0.9072 (0.0016)

<sup>a</sup>Data in brackets are standard error.

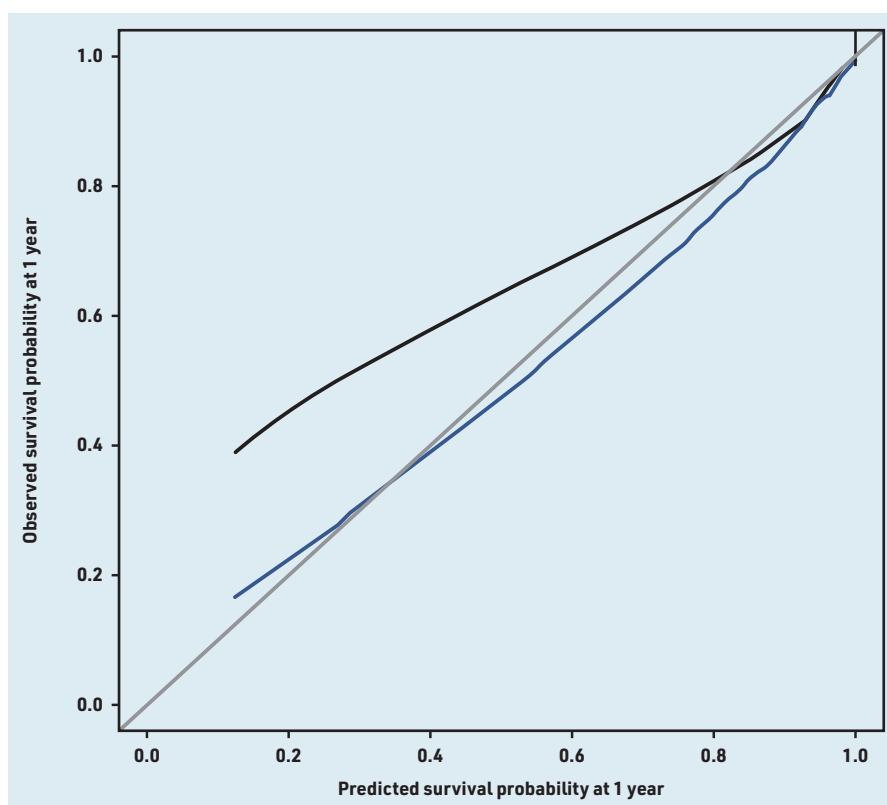
The current study's reduced model retained 21 conditions, which partly overlapped with those in the 20-condition model (Table 4), and showed similar performance. The model had reasonable calibration, although it was found to underpredict survival at lower risks (<60%). Much of this underprediction was removed in predictions adjusted for overfitting (Figure 2).

## DISCUSSION

### Summary

In this study, a modified version of the CMMS was developed and validated for use with a wider age range and using SNOMED CT.

The reduced 21-condition model performed similarly to both the full model and the original 20-condition model in predicting mortality with excellent discrimination and reasonable calibration. The performance of the model was also similar to that of the original CMMS. The authors have opted to use the unadjusted 21-condition model as this will maximise its use in studies of different designs, where researchers can apply their own adjustments for age and sex. The authors plan to use this multimorbidity score in their epidemiological studies (including COVID-19 studies), and to make this available to the wider international SNOMED CT community.



**Figure 2. Observed-predicted calibration curve for the 21-condition model using 2000 bootstrap samples. Mean 0.008 (standard error = 0.9). Quantile 0.01. Black = observed. Blue = optimism corrected. Grey = ideal.**

**Table 4. HRs (95% CIs) of the predictors from the three models<sup>a</sup>**

Predictor	37-condition model	20-condition model	Reduced model
Age, 10 years	1.22 (1.02 to 1.47)	1.24 (1.03 to 1.49)	–
[Age, 10 years] <sup>2</sup>	1.05 (1.03 to 1.06)	1.05 (1.03 to 1.06)	1.06 (1.06 to 1.06)
Sex, male	1.33 (1.23 to 1.45)	1.29 (1.19 to 1.39)	1.34 (1.24 to 1.46)
Cancer in the past 5 years	3.31 (2.99 to 3.67)	3.23 (2.92 to 3.58)	3.33 (3.00 to 3.69)
Dementia	2.57 (2.33 to 2.84)	2.60 (2.35 to 2.87)	2.55 (2.32 to 2.82)
Alcohol problems	2.17 (1.84 to 2.55)	2.52 (2.18 to 2.92)	2.21 (1.88 to 2.60)
Multiple sclerosis	2.13 (1.32 to 3.44)	–	2.14 (1.33 to 3.46)
Chronic liver disease and viral hepatitis	1.98 (1.57 to 2.49)	–	1.99 (1.58 to 2.50)
Chronic obstructive pulmonary disease	1.96 (1.76 to 2.18)	1.97 (1.77 to 2.18)	2.02 (1.83 to 2.23)
Learning disability	1.88 (1.14 to 3.10)	–	1.89 (1.15 to 3.11)
Parkinsonism	1.71 (1.39 to 2.11)	–	1.73 (1.40 to 2.13)
Heart failure	1.66 (1.49 to 1.85)	1.67 (1.50 to 1.86)	1.66 (1.49 to 1.84)
Epilepsy	1.59 (1.25 to 2.02)	1.61 (1.27 to 2.04)	1.61 (1.27 to 2.04)
Schizophrenia or bipolar disorder	1.59 (1.22 to 2.06)	1.65 (1.27 to 2.13)	1.62 (1.25 to 2.10)
Psychoactive substance misuse	1.57 (1.20 to 2.04)	–	1.57 (1.20 to 2.04)
Painful condition	1.55 (1.42 to 1.68)	1.56 (1.43 to 1.69)	1.56 (1.44 to 1.69)
Constipation	1.47 (1.33 to 1.62)	1.51 (1.37 to 1.67)	1.47 (1.33 to 1.62)
Peripheral vascular disease	1.39 (1.07 to 1.81)	–	1.40 (1.08 to 1.82)
Atrial fibrillation	1.39 (1.27 to 1.53)	1.39 (1.26 to 1.52)	1.40 (1.27 to 1.53)
Anxiety or depression	1.38 (1.27 to 1.50)	1.41 (1.29 to 1.53)	1.38 (1.27 to 1.50)
Diabetes	1.31 (1.20 to 1.43)	1.33 (1.22 to 1.45)	1.34 (1.23 to 1.46)
Psoriasis or eczema	1.27 (1.03 to 1.57)	–	–
Chronic kidney disease	1.24 (1.14 to 1.35)	1.24 (1.14 to 1.36)	1.24 (1.14 to 1.35)
Anorexia or bulimia	1.22 (0.66 to 2.28)	–	–
Peptic ulcer	1.13 (0.98 to 1.30)	–	–
Stroke and TIA	1.11 (1.00 to 1.24)	1.11 (1.00 to 1.23)	–
Bronchiectasis	1.11 (0.87 to 1.41)	–	–
Asthma currently treated	1.05 (0.93 to 1.18)	1.04 (0.93 to 1.17)	–
Hypertension	1.04 (0.96 to 1.13)	1.04 (0.96 to 1.13)	–
Thyroid disorders	1.03 (0.92 to 1.14)	–	–
Coronary heart disease	1.00 (0.91 to 1.09)	0.99 (0.91 to 1.08)	–
Rheumatoid arthritis	0.98 (0.85 to 1.12)	0.98 (0.86 to 1.13)	–
Chronic sinusitis	1.98 (1.57 to 2.49)	–	–
Blindness and low vision	0.96 (0.84 to 1.11)	–	–
Hearing loss	0.92 (0.85 to 1.00)	0.92 (0.85 to 1.00)	–
Diverticular disease of intestine	0.92 (0.82 to 1.02)	–	–
Disorder of prostate	0.83 (0.74 to 0.93)	–	0.83 (0.74 to 0.93)
Irritable bowel syndrome	0.83 (0.71 to 0.95)	0.81 (0.70 to 0.94)	0.82 (0.71 to 0.94)
Inflammatory bowel disease	0.65 (0.43 to 0.97)	–	–
Migraine	0.59 (0.25 to 1.42)	–	–

<sup>a</sup>A blank cell indicates that the risk factor concerned was not included in the relevant model. HR = hazard ratio. TIA = transient ischaemic attack.

### Strengths and limitations

The study used a large, up-to-date, nationally representative cohort, which included all patients aged ≥16 years,

and the results were validated using both synchronous and asynchronous datasets. As this study arose from the need for a single comorbidity measure to support the authors' surveillance activity during the pandemic the authors sampled the development and validation datasets only from their cohort and therefore the index was not validated in other independent samples. The analysis was based on SNOMED CT, which is now used across English general practice as well as internationally. The authors believe the results are generalisable to other cohorts and potentially other countries that use similarly coded primary care data. A full list of clinical terms that make up the variables are provided in Supplementary Appendix S1. The authors' logic model and weightings, for others to use in other databases, are provided in Supplementary Appendix S2.

CMMS weights were only derived for mortality and not unplanned hospital admissions or primary care consultations. Mortality tends to be the most commonly used outcome in the development of comorbidity indices in the literature,<sup>26</sup> and it was felt that having only one set of weights would allow it to be easier to apply to, and interpret in, different datasets.

The list of conditions used in this study were exactly as included in the original development and validation of the CMMS by Payne *et al.*,<sup>8</sup> which was based on earlier literature on multimorbidity in primary care.<sup>1,13</sup> These studies did not include other common conditions that might be expected to be included in other multimorbidity indices or that are highly clinically relevant (for example, obesity).

### Comparison with existing literature

A number of comorbidity indices and adaptations have been developed in administrative data studies, which are either solely diagnosis based or solely medication based.<sup>26</sup> The current score uses a different approach that combines information from clinical terms as well as prescriptions, and additionally includes a 12-month timeframe in the definition of certain conditions. This allows the severity and/or recency of some conditions (for example, constipation and cancer) to be taken into account in the calculation of the score.

The current study retained a slightly different set of conditions in the reduced model to that in Payne *et al.*<sup>8</sup> As variable reduction in the current model was based on AIC rather than the combination of effect size and prevalence, the modified score included some less prevalent conditions that are strongly associated with mortality such

---

## Data

The Oxford-RCGP RSC dataset can be accessed by researchers; approval is on a project-by-project basis (<https://orchid.phc.ox.ac.uk/index.php/rcgp-rsc>). Ethical approval by an NHS Research Ethics Committee/other appropriate approval is needed before any data release. Researchers wishing to directly analyse patient-level pseudonymised data will be required to complete information governance training and work on the data from the secure servers at the University of Oxford. Patient-level data cannot be taken out of the secure network.

## Provenance

Freely submitted; externally peer reviewed.

## Competing interests

Simon de Lusignan is Director of the RCGP RSC; he has had grants through his University from AstraZeneca, GSK, Lilly, MSD, Sanofi, Seqirus, and Takeda; and has been an advisory board member for AstraZeneca, Sanofi, Seqirus, and Pfizer.

## Acknowledgements

The authors acknowledge patients who do not opt out of data sharing, and practices who share data with Oxford-RCGP RSC. They also acknowledge EMIS, TPP, In Practice Systems, and Wellbeing for facilitating pseudonymisation of clinical data as close to source as possible.

## Open access

This article is Open Access: CC BY 4.0 licence (<http://creativecommons.org/licenses/by/4.0/>).

## Discuss this article

Contribute and read comments about this article: [bjgp.org/letters](http://bjgp.org/letters)

as multiple sclerosis and learning disability. The differences in included conditions and weightings between the current model and Payne *et al*'s<sup>8</sup> may also be partly explained by age group differences in multimorbidity patterns as the current study used a lower age cut-off of 16 years. Earlier research has shown that, although multimorbidity in later life tends to involve multiple 'concordant' conditions (typically vascular and metabolic conditions), multimorbidity in earlier adulthood generally involves a mix of physical and mental conditions.<sup>27</sup>

## Implications for research and practice

With an ageing population, multimorbidity is increasingly prevalent, particularly in developed countries. Multimorbidity is known to be associated with higher healthcare use, higher healthcare costs, greater mortality, as well as higher risk of active patient safety incidents (for example, adverse drug events) or precursors of safety incidents (for example, medication non-adherence).<sup>28</sup> Some earlier studies also suggest particular clusters of multimorbidity, for example, those that involve mental disorders, maybe associated with poorer outcomes,<sup>28</sup> and this is also reflected in the modified version of CMMS where a number of mental conditions and substance use disorders are included. A better understanding of multimorbidity and the specific conditions or clusters that

lead to poorer outcomes would inform healthcare coordination and delivery, and the development of interventions to improve outcomes in the subgroups of patients at highest risk.

As this version of the CMMS was developed based on a population-based cohort, its relevance and generalisability to specialised settings, for example, a mental health service where the patients' demographic and clinical characteristics may be quite different, remains unclear. Future research should explore whether such a measure is useful in guiding care decision making and better organisation of health services in a range of settings and different subgroups of the population.

In conclusion, in this study the development and validation of a modified version of the CMMS for predicting mortality is described. The inclusion of a wider age range may improve the generalisability of the score over the original. As it is based on SNOMED CT rather than Read codes, it is applicable to today's English general practice data and this should also increase its applicability in other contexts. Future research should investigate whether a measure of multimorbidity may be helpful in informing healthcare coordination and delivery, especially across a range of different healthcare settings.

## REFERENCES

1. Cassell A, Edwards D, Harshfield A, *et al*. The epidemiology of multimorbidity in primary care: a retrospective cohort study. *Br J Gen Pract* 2018; DOI: <https://doi.org/10.3399/bjgp18X695465>.
2. Charlson ME, Pompei P, Ales KL, *et al*. A new method of classifying prognostic comorbidity in longitudinal studies: development and validation. *J Chronic Dis* 1987; **40(5)**: 373–383.
3. Elixhauser A, Steiner C, Harris DR, *et al*. Comorbidity measures for use with administrative data. *Med Care* 1998; **36(1)**: 8–27.
4. Deyo RA, Cherkin DC, Ciol MA. Adapting a clinical comorbidity index for use with ICD-9-CM administrative databases. *J Clin Epidemiol* 1992; **45(6)**: 613–619.
5. Sundararajan V, Henderson T, Perry C, *et al*. New ICD-10 version of the Charlson comorbidity index predicted in-hospital mortality. *J Clin Epidemiol* 2004; **57(12)**: 1288–1294.
6. Palella FJ, Jr, Delaney KM, Moorman AC, *et al*. Declining morbidity and mortality among patients with advanced human immunodeficiency virus infection. *N Engl J Med* 1998; **338(13)**: 853–860.
7. Zavascki AP, Fuchs SC. The need for reappraisal of AIDS score weight of Charlson comorbidity index. *J Clin Epidemiol* 2007; **60(9)**: 867–868.
8. Payne RA, Mendonca SC, Elliott MN, *et al*. Development and validation of the Cambridge Multimorbidity Score. *Can Med Assoc J* 2020; **192(5)**: E107–E114.
9. NHS Digital. Read codes. 2022. <https://digital.nhs.uk/services/terminology-and-classifications/read-codes> (accessed 24 Apr 2023).
10. NHS Digital. SNOMED CT. 2023. <https://digital.nhs.uk/services/terminology-and-classifications/snomed-ct> (accessed 24 Apr 2023).
11. Thakur B, Dubey P, Benitez J, *et al*. A systematic review and meta-analysis of geographic differences in comorbidities and associated severity and mortality among individuals with COVID-19. *Sci Rep* 2021; **11(1)**: 8562.
12. Leston M, Elson WH, Watson C, *et al*. Representativeness, vaccination uptake and COVID clinical outcomes 2020–21 in the UK's Oxford-RCGP Research and Surveillance Network: cohort profile. *JMIR Public Health Surveill* 2022; **8(12)**: e39141.
13. Barnett K, Mercer SW, Norbury M, *et al*. Epidemiology of multimorbidity and implications for health care, research, and medical education: a cross-sectional study. *Lancet* 2012; **380(9836)**: 37–43.
14. Akaike H. A new look at the statistical model identification. *IEEE Trans Automat Contr* 1974; **19(6)**: 716–723.
15. Harrell FE, Jr, Califf RM, Pryor DB, *et al*. Evaluating the yield of medical tests. *JAMA* 1982; **247(18)**: 2543–2546.
16. R Core Team. *R: a language and environment for statistical computing*. Vienna: R Foundation for Statistical Computing, 2021.
17. Wickham H. *ggplot2: elegant graphics for data analysis*. New York, NY: Springer-Verlag, 2016.
18. Bates D, Mächler M, Bolker B, *et al*. Fitting linear mixed-effects models using lme4. *J Stat Softw* 2015; **67(1)**: 1–48.
19. Grolemund G, Wickham H. Dates and times made easy with lubridate. *J Stat Softw* 2011; **40(3)**: 1–25.
20. Coppock A. randomizr: easy-to-use tools for common forms of random assignment and sampling. 2023. <https://CRAN.R-project.org/package=randomizr> (accessed 24 Apr 2023).
21. Harrell FE, Jr. rms: regression modeling strategies. 2023. <https://CRAN.R-project.org/package=rms> (accessed 24 Apr 2023).
22. Therneau TM. Survival: survival analysis. 2023. <https://CRAN.R-project.org/package=survival> (accessed 24 Apr 2023).
23. Therneau TM, Grambsch PM. *Modeling survival data: extending the Cox model*. New York, NY: Springer, 2000.
24. Yoshida K, Bartel A. tableone: create 'Table 1' to describe baseline characteristics with or without propensity score weights. 2022. <https://CRAN.R-project.org/package=tableone> (accessed 24 Apr 2023).
25. Wickham H, Averick M, Bryan J, *et al*. Welcome to the tidyverse. *J Open Source Softw* 2019; **4(43)**: 1686.
26. Yurkovich M, Avina-Zubieta JA, Thomas J, *et al*. A systematic review identifies valid comorbidity indices derived from administrative health data. *J Clin Epidemiol* 2015; **68(1)**: 3–14.
27. McLean G, Gunn J, Wyke S, *et al*. The influence of socioeconomic deprivation on multimorbidity at different ages: a cross-sectional study. *Br J Gen Pract* 2014; DOI: <https://doi.org/10.3399/bjgp14X680545>.
28. Panagioti M, Stokes J, Esmail A, *et al*. Multimorbidity and patient safety incidents in primary care: a systematic review and meta-analysis. *PLoS One* 2015; **10(8)**: e0135947.