

## *Enterococcus faecalis* Adhesin, Ace, Mediates Attachment to Extracellular Matrix Proteins Collagen Type IV and Laminin as well as Collagen Type I

SREEDHAR R. NALLAPAREDDY,<sup>1,2</sup> XIANG QIN,<sup>1,2,3</sup> GEORGE M. WEINSTOCK,<sup>2,3</sup>  
MAGNUS HÖÖK,<sup>3,4</sup> AND BARBARA E. MURRAY<sup>1,2,3\*</sup>

Division of Infectious Diseases, Department of Internal Medicine,<sup>1</sup> Center for the Study of Emerging and Re-emerging Pathogens,<sup>2</sup> Department of Microbiology and Molecular Genetics,<sup>3</sup> University of Texas Medical School, and Center for Extracellular Matrix Biology, Institute of Biosciences and Technology, Texas A&M University System Health Science Center,<sup>4</sup> Houston, Texas 77030

Received 10 April 2000/Returned for modification 12 May 2000/Accepted 16 June 2000

**Adhesin-mediated binding to extracellular matrix (ECM) proteins is thought to be a crucial step in the pathogenic process of many bacterial infections. We have previously reported conditional adherence of most *Enterococcus faecalis* isolates, after growth at 46°C, to ECM proteins collagen types I and IV and laminin; identified an *E. faecalis*-specific gene, *ace*, whose encoded protein has characteristics of a bacterial adhesin; and implicated Ace in binding to collagen type I. In this study, we constructed an *ace* disruption mutant from *E. faecalis* strain OG1RF that showed marked reduction in adherence to collagen types I and IV and laminin when compared to the parental OG1RF strain after growth at 46°C. Polyclonal immune serum raised against the OG1RF-derived recombinant Ace A domain reacted with a single ~105-kDa band of mutanolysin extracts from OG1RF grown at 46°C, while no band was detected in extracts from OG1RF grown at 37°C, nor from the OG1RF *ace* mutant grown at 37 or 46°C. IgGs purified from the anti-Ace A immune serum inhibited adherence of 46°C-grown *E. faecalis* OG1RF to immobilized collagen type IV and laminin as well as collagen type I, at a concentration as low as 1 µg/ml, and also inhibited the 46°C-evoked adherence of two clinical isolates tested. We also showed in vitro interaction of collagen type IV with Ace from OG1RF mutanolysin extracts on a far-Western blot. Binding of recombinant Ace A to immobilized collagen types I and IV and laminin was demonstrated in an enzyme-linked immunosorbent assay and was shown to be concentration dependent. These results indicate that Ace A mediates the conditional binding of *E. faecalis* OG1RF to collagen type IV and laminin in addition to collagen type I.**

Collagens, proteoglycans, and structural glycoproteins such as fibronectin and laminin (LN) are found in the extracellular matrix (ECM) of all eukaryotic tissues and are frequently exploited for colonization by microbes and initiation of infections (5, 13, 38). Collagen contains a characteristic Gly-X-Y repeating tripeptide sequence, where X and Y often are proline and hydroxyproline, respectively. Segments of the collagen polypeptides containing this repeat sequence form characteristic triple helix structures with a rope-like appearance. In mammals, collagen occurs in close to 20 genetically different types, some of which show a tissue-specific distribution. For example, collagen type IV (CIV) is found exclusively in basement membranes, whereas collagen type I (CI) has a relatively broad distribution (16). LNs, which also occur in several genetically distinct forms, are composed of three polypeptides that are partly associated to form a characteristic cross, as revealed by electron microscopy. In the long arm of the cross, the three polypeptides form a rope-like structure resembling that seen in collagen. The LNs are components of the basement membrane, where they contribute to the structural integrity of the tissue and to cell signaling (1, 2, 6, 40).

In normal tissues, most ECMs are covered by epithelial or

endothelial cells and hence are not available for binding. However, any type of trauma that damages host tissues may expose the ECM and allow microbial colonization and infection. During the past decade, several microorganisms, including streptococci and staphylococci, have been shown to express surface components that recognize ECM molecules, including collagen and LN (5, 12–15, 20, 30, 31, 33–35).

Our earlier investigations on adherence of clinical isolates of *Enterococcus faecalis*, regardless of their source, showed that most isolates displayed conditional binding to CI, CIV, and mouse LN. The adherence phenotype was termed conditional because it was observed after growth at 46°C, but not, for most isolates, after growth at 37°C (39); in these experiments, we defined adherence as being present if >5% of total labeled cells were bound to the ECM-coated wells. We then identified a putative collagen binding gene, *ace*, in the *E. faecalis* strain V583 partial database (24), and based on structural similarities to Cna of *Staphylococcus aureus*, followed by some biochemical and biophysical characterization, we assigned a CI binding function to Ace (24).

In the present investigation, we constructed an *E. faecalis* strain OG1RF *ace* mutant and showed that it is deficient in adherence to CI, CIV, and LN. We also found that polyclonal anti-Ace A antibodies raised against recombinant OG1RF-derived Ace A protein inhibited adherence of wild-type OG1RF to these three ECM proteins. Using far-Western blots and solid-phase enzyme-linked immunosorbent assays (ELISAs), we confirmed in vitro Ace A binding to CI, CIV, and LN.

\* Corresponding author. Mailing address: Center for the Study of Emerging and Re-emerging Pathogens, Division of Infectious Diseases, Department of Internal Medicine, University of Texas Medical School at Houston, 6431 Fannin St., Houston, TX 77030. Phone: (713) 500-6767. Fax: (713) 500-5495. E-mail: infdis@heart.med.uth.tmc.edu.

TABLE 1. Bacterial strains and plasmids used in this study

Strain or plasmid	Relevant characteristics <sup>a</sup>	Source or reference
<b>Strains</b>		
<i>E. faecalis</i>		
OG1RF	Adh <sup>+</sup> Fus <sup>r</sup> Rif <sup>r</sup>	18, 39
TX5256	OG1RF <i>ace</i> ::pTEX5253; <i>ace</i> insertion disruption mutant of OG1RF; Adh <sup>-</sup> Fus <sup>r</sup> Kan <sup>r</sup> Rif <sup>r</sup>	This study
<i>E. coli</i>		
DH5 $\alpha$	<i>E. coli</i> host strain used for routine cloning	Stratagene
INV $\alpha$ F'	<i>E. coli</i> host strain for cloning of PCR products	Invitrogen
LMG194	<i>E. coli</i> strain for expression of recombinant proteins	Invitrogen
TX5252	INV $\alpha$ F' (pTEX5252); Amp <sup>r</sup> Kan <sup>r</sup>	This study
TX5253	DH5 $\alpha$ (pTEX5253); Kan <sup>r</sup>	This study
TX5254	LMG194 (pTEX5254); Amp <sup>r</sup>	This study
<b>Plasmids</b>		
pTEX4577	Derived from pBluescript SK <sup>-</sup> , used for insertion disruption mutagenesis in enterococci	28
pBAD/HisA	Expression vector	Invitrogen
pTEX5252	1,003-bp intragenic <i>ace</i> PCR product cloned into pCR2.1 (TA cloning vector)	This study
pTEX5253	1,100-bp <i>XhoI-KpnI</i> intragenic <i>ace</i> fragment from pTEX5252 cloned into pTEX4577	This study
pTEX5254	1,008-bp OG1RF <i>ace</i> (coding for complete A domain) cloned into pBAD/HisA expression vector	This study

<sup>a</sup> Adh<sup>+</sup>, adherence to CI, CIV, and LN after growth at 46°C; Adh<sup>-</sup>, markedly reduced adherence to CI, CIV, and LN; Amp<sup>r</sup>, ampicillin resistant; Fus<sup>r</sup>, fusidic acid resistant; Kan<sup>r</sup>, kanamycin resistant; Rif<sup>r</sup>, rifampin resistant.

#### MATERIALS AND METHODS

**Bacterial strains and culture conditions.** The strains and plasmids used in this study are listed in Table 1. *E. faecalis* strain OG1RF, a derivative of *E. faecalis* OG1, and *E. faecalis* strain V583 have been described previously (18, 25). *E. faecalis* strain MC02152, isolated from a patient with endocarditis, was kindly provided by J. M. Steckelberg, Mayo Clinic, Minneapolis, Minn. *Escherichia coli* cells were grown in Luria-Bertani (LB) broth or on LB agar with appropriate antibiotics overnight at 37°C. Enterococci were grown either in brain heart infusion (BHI) broth or agar or in Todd-Hewitt broth or agar (Difco Laboratories, Detroit, Mich.) overnight at 37°C for routine purposes and at 46°C for adherence assays. Antibiotics were used at the following concentrations: for *E. coli*, kanamycin, 50  $\mu$ g/ml; ampicillin, 50 to 100  $\mu$ g/ml; for the *E. faecalis* mutant, kanamycin, 2,000  $\mu$ g/ml. All constructs were given TX numbers as shown in Table 1. Plasmids from these constructs were assigned respective pTEX numbers.

**Chemicals.** CI and CIV were purchased from Sigma Chemical Co. (St. Louis, Mo.). Mouse LN (isolated from the Engelbreth-Holm-Swarm sarcoma) was purchased from Life Technologies (Grand Island, N.Y.). Tran<sup>35</sup>S-label and bovine serum albumin (BSA) were purchased from ICN Biomedicals, Inc. (Costa Mesa, Calif.). Oligonucleotide primers were purchased from Life Technologies. PCR buffers were purchased from Invitrogen Corporation (Carlsbad, Calif.). All other chemicals used in the investigation were of molecular biology grade.

**General DNA techniques.** DNA preparation, purification, restriction digestion, agarose gel electrophoresis, and ligation were performed by standard methods (26). Chromosomal DNA from *E. faecalis* was prepared according to the method described by Murray and colleagues (18). PCR amplification of DNA was performed on a DNA thermal cycler (Perkin-Elmer Corp., Norwalk, Conn.). Preparation of agarose plugs, pulsed-field gel electrophoresis (PFGE), and Southern blot analysis were carried out according to previously described methods (17, 22). Radioactive DNA probes were prepared by random-primed labeling according to the protocol supplied (Life Technologies). Electroporation of *E. coli* and *E. faecalis* was carried out with a Bio-Rad Gene Pulser as described previously (11). Isopropylthio- $\beta$ -D-galactoside (IPTG) and 5-bromo-4-chloro-3-indolyl- $\beta$ -galactoside (X-Gal) were used at 0.5 mM and 80  $\mu$ g/ml, respectively. DNA sequencing reactions were performed by the *Taq* dye-deoxy terminator method on an automated ABI Prism sequencer (Applied Biosystems, Foster City, Calif.).

**Construction of a mutation in the *ace* gene of *E. faecalis* OG1RF.** The *E. faecalis* OG1RF *ace* gene was disrupted by using a suicide vector pTEX4577 (28) containing an internal fragment of the *ace* gene. A 1,003-bp internal fragment (coding for the A domain of Ace of *E. faecalis* strain OG1RF) was amplified by PCR with AceF2 (5'-GAGCAAAAGTTCAATCGTTGAC-3') and AceR3 (5'-GTCTGTCTTTTCACTTGTCTTCT-3') primers and cloned into the TA cloning vector pCR2.1 (Invitrogen Corp., Carlsbad, Calif.) resulting in TX5252. A 1,100-bp *XhoI-KpnI* DNA fragment from pTEX5252 was recombined into a pBlue-script derivative, pTEX4577, and the resulting recombinant plasmid was designated as pTEX5253. Competent cells of *E. faecalis* OG1RF were electroporated with 5  $\mu$ g of purified pTEX5253 in 2  $\mu$ l of sterile water (22). Transformants showing growth on Todd-Hewitt agar supplemented with 2,000  $\mu$ g of kanamycin per ml were selected, and one was designated as TX5256. Chromosomal DNA

from agarose plugs was analyzed by PFGE after *NotI* or *SmaI* restriction digestion and hybridization to confirm the disruption. To further confirm the location of pTEX4577 within *ace*, chromosomal DNA from TX5256 was PCR amplified with the AceF1 (5'-CTATTGTCAACTTCTGAAAAAG-3') primer and T7 or T3 primers from pTEX4577, and the resulting PCR products were sequenced. To test for the stability of this disruption mutation, OG1RF *ace*::pTEX5253 (TX5256) was grown overnight at 37 or 46°C in BHI broth without kanamycin and then reinoculated into BHI broth, grown again overnight two times, and then plated on BHI agar. Approximately 3,000 colonies grown on BHI agar were subpatched on BHI agar supplemented with 2,000  $\mu$ g of kanamycin per ml to screen for colonies that had lost resistance to kanamycin.

**Adherence assay.** Adherence to CI, CIV, and LN was tested by a previously described assay with some modifications (39). Bacteria were streaked from freezer vials onto BHI agar and incubated at 37°C overnight. A few colonies were picked and resuspended in BHI, and 10<sup>8</sup> CFU were inoculated into 5 ml of BHI broth with 10  $\mu$ Ci of Tran<sup>35</sup>S-label per ml. The cultures were grown at 46°C for 16 h and then harvested by centrifugation at 2,800  $\times g$  for 15 min. The cell pellets were washed three times in phosphate-buffered saline (PBS) buffer and resuspended in 0.1% Tween 80–0.1% BSA in PBS. The cell density was adjusted to an optical density at 600 nm (OD<sub>600</sub>) of 0.2. One microgram of ECM proteins in a total volume of 50  $\mu$ l of PBS was used to coat Immulon 1 Removawells (Dynatech Laboratories, Chantilly, Va.) and incubated at 4°C overnight. After decanting, the wells were blocked with 200  $\mu$ l of 0.2% BSA in PBS at 4°C for 2 h and then washed with PBS three times. A total volume of 50  $\mu$ l of labeled bacteria was added to each well and incubated at room temperature for 2 h with gentle shaking at 70 rpm. The wells were washed with 0.1% Tween 80–0.1% BSA in PBS three times. Each detachable well was separated and placed into a vial with 2 ml of scintillation liquid and counted in a liquid scintillation counter (LKB Wallace, San Francisco, Calif.). Fifty microliters of labeled bacteria (adjusted to an OD<sub>600</sub> of 0.2) was counted to determine the total amount of radioactivity added to each well. The percentage of adherence was calculated with the formula (radioactivity of bound cells/radioactivity of total cells added)  $\times$  100. The assays were performed in duplicate. Isolates were considered to adhere to ECM proteins if >5% of total labeled cells bound to the well.

**Cloning, expression, and purification of Ace A from OG1RF.** A 1,008-bp DNA fragment coding for the complete A domain was amplified from pTEX5252 (derived from OG1RF) by using AceFc (5'-CAGAACTCGAGTTGAGCAAAAAGTTCAATC-3') and AceRc (5'-TGGAGGTACCCTAGTCTGTCTTTTTCAC TTG-3') primers (introduced restriction sites are underlined) and cloned into pBAD/HisA expression vector (Invitrogen) followed by electroporation into the *E. coli* host LMG194, and one of the resulting colonies (designated as TX5254) was verified for the fidelity of the sequence and confirmed as correct by sequencing. Following electrophoresis of lysates on 10% NuPAGE Bis-Tris gels (NOVEX, San Diego, Calif.), Western transfer was carried out according to the protocol supplied by NOVEX, and His-tagged recombinant protein was detected with anti-His (penta) antibodies (Qiagen, Inc., Valencia, Calif.).

The recombinant Ace A domain was overexpressed by inoculating 1 liter of LB broth with 10 ml of an overnight culture of TX5254. Following 2.5 h of growth at 37°C, arabinose was added to a final concentration of 0.2% to induce protein expression, and incubation was continued for an additional 6 h. The bacterial cell

pellet was lysed by sonication in denaturing lysis buffer (8 M urea, 0.1 M  $\text{NaH}_2\text{PO}_4$ , 0.01 M Tris-HCl [pH 8.0]) containing 5 mM imidazole, and the supernatant was purified by metal chelation ( $\text{Ni}^{2+}$ ) chromatography. The bound proteins were washed with a mixture of 8 M urea, 0.1 M  $\text{NaH}_2\text{PO}_4$ , and 0.01 M Tris-HCl (pH 6.3) and neutralized with renaturing buffer (50 mM Tris-HCl, 50 mM NaCl, 50 mM  $\text{NaH}_2\text{PO}_4$  [pH 8.0]); after washing with renaturing buffer containing 20 to 40 mM imidazole, the recombinant protein was eluted with a linear gradient of 50 to 400 mM imidazole in renaturing buffer, and the fractions were analyzed by sodium dodecyl sulfate-polyacrylamide gel electrophoresis (SDS-PAGE). Fractions containing eluted recombinant Ace A were pooled, dialyzed against 25 mM Tris-HCl (pH 8.0), concentrated by lyophilization, and repurified by metal chelation ( $\text{Ni}^{2+}$ ) chromatography. Purified recombinant Ace A protein showed a single band on SDS-PAGE.

**Production of rabbit polyclonal serum.** After verifying a single reacting band of His-tagged recombinant Ace A on a Western blot probed with anti-His (penta) antibodies (Qiagen, Inc.), this protein was used to raise polyclonal antibodies by immunization of rabbits at Bethyl Laboratories, Inc. (Montgomery, Tex.) and stored at  $-70^\circ\text{C}$ . Antibody titers of sera were determined by enzyme-linked immunosorbent assay (ELISA) with preimmune serum as a control.

**Protein extraction and Western blotting.** Protein extracts from *E. faecalis* OG1RF were prepared by using mutanolysin (Sigma Chemical Co.). *E. faecalis* OG1RF cells grown at 37 and  $46^\circ\text{C}$  were washed and resuspended in 1/10 volume of 0.02 M Tris-HCl (pH 7.0)–0.01 M  $\text{MgSO}_4$  buffer containing 100 mM phenylmethylsulfonyl fluoride (PMSF). Mutanolysin was added to a final concentration of 5 U/1  $\text{OD}_{600}$  of cells and incubated at  $37^\circ\text{C}$  for 1 h in a rotating shaker. The supernatant collected after centrifugation at  $11,750 \times g$  for 15 min was concentrated by lyophilization. Protein concentrations were estimated by bicinchoninic acid assay (Pierce, Rockford, Ill.). Mutanolysin extracts from the *E. faecalis* OG1RF wild type and Ace insertion mutant (TX5256) were electrophoresed on 4 to 12% NuPAGE Bis-Tris gels (NOVEX) under reducing conditions in MOPS (3-[N-morpholino]propanesulfonic acid) buffer, and transferred to a polyvinylidene difluoride (PVDF) membrane. Electrophoresis and transfer were carried out according to the protocol supplied by NOVEX. Membranes were then incubated with either anti-Ace A polyclonal antiserum or preimmune serum (antibody I) followed by protein A-horseradish peroxidase conjugate (antibody II), and developed with 4-chloronaphthol in the presence of  $\text{H}_2\text{O}_2$ .

**Far-Western blot assay.** Mutanolysin-PMSF extracts from the parental *E. faecalis* OG1RF and its *ace* insertion mutant (TX5256) were electrophoresed on 4 to 12% NuPAGE Bis-Tris gel (NOVEX) under nonreducing conditions in MOPS buffer and transferred to a PVDF membrane. After overnight renaturation in blocking buffer, the membrane was further incubated with 10  $\mu\text{g}$  of CIV per ml for about 16 h at  $4^\circ\text{C}$  with gentle shaking. Bound CIV on Western blots was detected with anti-CIV monoclonal antibodies (Sigma Chemical Co.) followed by horseradish peroxidase-conjugated goat anti-mouse immunoglobulin G (IgG) antibodies (Life Technologies, Inc.), and developed with 4-chloronaphthol in the presence of  $\text{H}_2\text{O}_2$ .

**Elution of antibodies specific to Ace.** Because the Ace immune serum previously described (24) was found to react with several bands, we eluted Ace A-specific antibodies from anti-Ace (OG1RF) rabbit immune serum by the method described below and used in the adherence inhibition assay. Recombinant Ace A protein was electrophoresed on 10% NuPAGE Bis-Tris gels (NOVEX) and transferred to a PVDF membrane. Membranes were blocked with 5% skim milk and incubated with polyclonal serum raised against recombinant Ace A of OG1RF. Following visualization of the antibodies bound to Ace on a cut strip by the procedure described in the previous section, the area containing the antigen-anti-Ace antibody complex was excised and incubated with 10 ml of 100 mM glycine (pH 2.5) for 15 min at room temperature to elute Ace-specific antibodies. After neutralization with 1 ml of 1 M Tris (pH 8.0), the solution was transferred to a clean tube and stored at  $-20^\circ\text{C}$  until use (7).

**IgG purification and inhibition of adherence.** IgGs were purified from both preimmune rabbit serum and polyclonal immune rabbit serum raised against recombinant Ace by affinity column chromatography with the Immunopure (G) IgG purification kit as per the supplied protocol (Pierce). Labeled bacteria were incubated with various concentrations of either preimmune rabbit IgGs or anti-Ace A IgGs for 1 h at  $37^\circ\text{C}$  and then centrifuged at  $2,800 \times g$  followed by resuspension in PBS with 0.1% Tween 80 and 0.1% BSA to remove excess unbound IgGs, prior to addition of labeled cells to the ECM-coated wells in adherence assay described earlier. Eluted Ace-specific antibodies were also used in the inhibition assay.

**Binding of recombinant Ace to collagens and LN.** Microtiter plates were coated with 10  $\mu\text{g}$  of ECM proteins or BSA in 100  $\mu\text{l}$  of PBS and allowed to incubate overnight at  $4^\circ\text{C}$ . Wells were washed five times with PBST (PBS with 0.01% Tween 20). After blocking wells with 5% BSA, wells were again washed. Various concentrations of recombinant Ace A (1 to 200  $\mu\text{g}/100 \mu\text{l}$ ) in PBS with 0.1% BSA were added to the wells and incubated at  $37^\circ\text{C}$ . After 4 h, unbound protein was removed by washing with PBST. Bound proteins were detected by penta-His monoclonal antibodies (Qiagen, Inc.) that recognize the His tag of the recombinant Ace A protein, followed by horseradish peroxidase-conjugated goat anti-mouse IgG antibodies (Life Technologies, Inc.). Relative binding was measured by monitoring  $A_{450}$  following the addition of 3, 3', 5, 5'-tetramethylbenzidine and  $\text{H}_2\text{O}_2$ . In a parallel set of experiments, CI-, CIV-, and LN-precoated

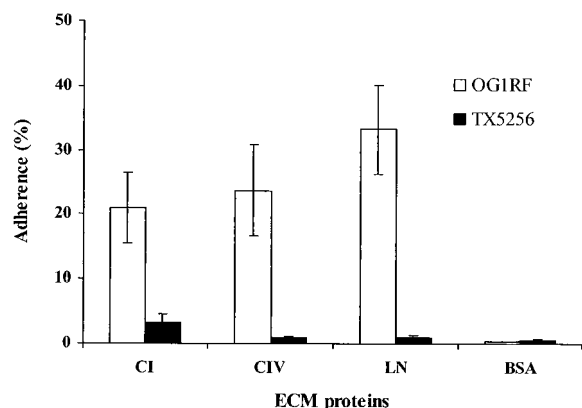


FIG. 1. Adherence of *E. faecalis* OG1RF and TX5256 (OG1RF *ace*: pTEX5253) to immobilized CI, CIV, LN, and BSA. Adherence was tested in wells coated with 1  $\mu\text{g}$  of ECM proteins (see text). Bars represent the mean percentages of cells bound  $\pm$  standard deviations for six wells. Results are representative of three independent experiments. BSA was used as a negative control.

wells were digested with collagenase VII (Sigma Chemical Co.) before incubation with recombinant Ace A.

## RESULTS

**Construction of an *ace* disruption mutation and stability.** Following electroporation of OG1RF with the suicide vector pTEX5253 and selection on kanamycin, 14 recombinant OG1RF colonies were recovered. DNA from three kanamycin-resistant OG1RF derivative colonies was digested with *NorI* or *SmaI*, followed by PFGE; hybridization with an *ace* probe, prepared by amplification with the AceF2 and AceR3 primers, showed two *ace* hybridizing bands (as expected for insertion duplication mutants, since there are single *NorI* and *SmaI* restriction sites in pTEX5253). OG1RF processed the same way showed a single hybridizing fragment. One of these colonies was designated as TX5256. The correct insertion, resulting from integration of pTEX5253, was also verified by sequencing of the PCR product amplified from TX5256 genomic DNA by using AceF1 and T7 primers and was found to have occurred at nucleotide 1101.

All colonies of TX5256 tested after passing through multiple generations without antibiotic selection retained the ability to grow on BHI agar supplemented with 2,000  $\mu\text{g}$  of kanamycin per ml, indicating the stability of this mutation.

**Adherence of the OG1RF *ace* mutant (OG1RF *ace*: pTEX5253).** Adherence of OG1RF and the mutant TX5256 to ECM proteins (CI, CIV, and LN) was tested. The *ace* mutant grown at  $46^\circ\text{C}$  showed a 6.4-fold decrease in percentage of binding to CI (from 21.1% to 3.3%) when compared to OG1RF. Similarly, the *ace* mutant grown at  $46^\circ\text{C}$  showed a substantial decrease in adherence to CIV (27.4-fold decrease relative to OG1RF) and LN (32.9-fold decrease relative to OG1RF) (Fig. 1). This reduced adherence was also found in two other *ace*-disrupted kanamycin-resistant colonies tested (data not shown).

**Western analysis of mutanolysin preparations of *E. faecalis* OG1RF and the OG1RF *ace* mutant.** Anti-Ace A polyclonal immune rabbit serum reacted with a single  $\sim 105$ -kDa band of mutanolysin-PMSF extracts prepared from  $46^\circ\text{C}$ -grown OG1RF, whereas no bands were detected from mutanolysin-PMSF extracts of  $37^\circ\text{C}$ -grown OG1RF (Fig. 2A). The apparent observed molecular mass is higher than predicted (calculated

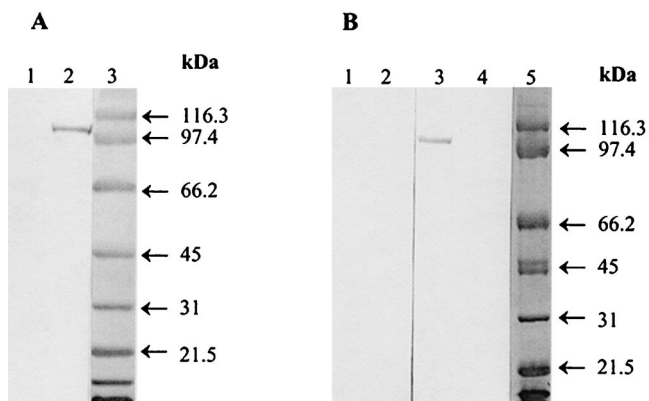


FIG. 2. Western blots of *E. faecalis* OG1RF and its *ace* mutant, TX5256 (OG1RF *ace*::pTEX5253). (A) Mutanolysin surface preparations probed with anti-Ace A polyclonal immune serum. Lanes: 1 and 2, protein extracts from 37°C- and 46°C-grown OG1RF, respectively; 3, molecular mass standards. (B) Mutanolysin surface preparations of 46°C-grown *E. faecalis* OG1RF and TX5256. Lanes: 1 and 2, OG1RF and TX5256 protein extracts, respectively, probed with rabbit preimmune serum; 3 and 4, OG1RF and TX5256 protein extracts, respectively, probed with anti-Ace A polyclonal immune serum; and 5, molecular mass standards.

based on the sequence described in the companion paper [19]), perhaps due to the acidic nature of the Ace protein (24), which has a pI of 4.2 as calculated from the amino acid sequence. The OG1RF *ace* mutant (TX5256) grown at 46°C demonstrated loss of the ~105-kDa immunoreactive protein band seen in OG1RF grown at 46°C (Fig. 2B).

**Influence of anti-Ace IgGs on adherence of *E. faecalis* OG1RF to ECM proteins.** We have previously reported inhibition of adherence of a 46°C-grown *E. faecalis* OG1RF *gelE* mutant (28) to CI by IgGs purified from *E. faecalis* EF1 anti-Ace A antibodies (24). However, that serum reacted with several bands on Western blots. Using IgGs that were purified from *E. faecalis* OG1RF anti-Ace A polyclonal immune serum, we tested the influence of anti-Ace IgGs on adherence of OG1RF to CIV and LN as well as to CI. Using 0.001 to 100 µg of either purified preimmune IgGs or purified anti-Ace IgGs per ml, inhibition of adherence was tested. Preincubation with as little as 1 µg of anti-Ace IgGs per ml considerably inhibited adherence to CIV and LN, in addition to CI, whereas preimmune serum had no effect on adherence over the range of concentrations tested (Table 2). Antibodies eluted from recombinant Ace A were also tested in the adherence inhibition assay. As shown in Fig. 3, eluted antibodies at a 1-µg/ml concentration eliminated 46°C-grown OG1RF adherence to the three ECM proteins, CI, CIV, and LN (28- to 37-fold decrease relative to OG1RF).

We also examined the ability of these anti-Ace A IgGs (purified from rabbit polyclonal immune serum raised against OG1RF-derived recombinant Ace A) to inhibit adherence of two clinical *E. faecalis* strains, V583 and MC02152, to CI, CIV, and LN that showed conditional binding at 46°C. Preincubation of these strains with anti-Ace A IgGs at a 20-µg/ml concentration inhibited adherence to CI, CIV, and LN; relative to preimmune serum, adherence decreased by about 8.5- to 13.4-fold as shown in Table 3. Purified IgGs from preimmune serum had no effect on adherence at this concentration.

**CIV interaction with Ace by far-Western blotting.** We used far-Western analysis and examined CIV's interaction with the ~105-kDa Ace protein to determine the direct association of CIV with Ace. Probing of mutanolysin-PMSF extracts (prepared from 46°C-grown OG1RF) on a Western blot with CIV,

TABLE 2. Inhibition of adherence of 46°C-grown *E. faecalis* OG1RF to ECM proteins by IgGs purified from anti-Ace A (OG1RF-derived) rabbit immune serum

ECM	% of cells bound at IgG concn of <sup>a</sup> :																									
	0 µg/ml			0.001 µg/ml			0.01 µg/ml			0.1 µg/ml			1 µg/ml			10 µg/ml			100 µg/ml							
	PI		Anti-Ace	PI		Anti-Ace	PI		Anti-Ace	PI		Anti-Ace	PI		Anti-Ace	PI		Anti-Ace	PI		Anti-Ace					
CI	24.6 ± 3.88	25.3 ± 6.78	20.1 ± 4.04	27.2 ± 4.95	18.0 ± 4.09	24.5 ± 5.35	6.3 ± 1.04	21.6 ± 2.86	2.2 ± 0.38	22.0 ± 3.12	2.3 ± 0.44	23.8 ± 3.66	1.5 ± 0.37	29.6 ± 5.31	30.3 ± 6.15	26.2 ± 8.35	28.8 ± 6.12	20.3 ± 3.05	28.9 ± 6.61	7.9 ± 3.49	25.9 ± 8.98	3.2 ± 1.89	26.6 ± 5.12	2.8 ± 0.81	26.0 ± 4.73	2.2 ± 1.25
CIV	29.6 ± 5.31	30.2 ± 1.94	26.2 ± 5.15	31.4 ± 7.89	21.8 ± 1.97	29.1 ± 4.67	8.6 ± 2.04	26.4 ± 7.51	3.5 ± 1.25	28.3 ± 4.25	2.8 ± 0.56	32.0 ± 3.03	2.1 ± 0.49	32.0 ± 5.91	0.7 ± 0.05	0.5 ± 0.09	1.8 ± 0.08	0.5 ± 0.03	0.8 ± 0.16	0.6 ± 0.26	0.6 ± 0.26	0.7 ± 0.12	0.6 ± 0.26	0.4 ± 0.06	0.9 ± 0.12	0.7 ± 0.05
LN	32.0 ± 5.91	30.2 ± 1.94	26.2 ± 5.15	31.4 ± 7.89	21.8 ± 1.97	29.1 ± 4.67	8.6 ± 2.04	26.4 ± 7.51	3.5 ± 1.25	28.3 ± 4.25	2.8 ± 0.56	32.0 ± 3.03	2.1 ± 0.49	BSA	0.9 ± 0.12	0.7 ± 0.05	0.5 ± 0.09	1.8 ± 0.08	0.5 ± 0.03	0.8 ± 0.16	0.6 ± 0.26	0.6 ± 0.26	0.7 ± 0.12	0.6 ± 0.26	0.4 ± 0.06	

<sup>a</sup> Values are means ± standard deviations for six wells. Results are representative of three independent experiments. PI, IgGs purified from preimmune rabbit serum; Anti-Ace, IgGs purified from polyclonal anti-Ace A rabbit immune serum.

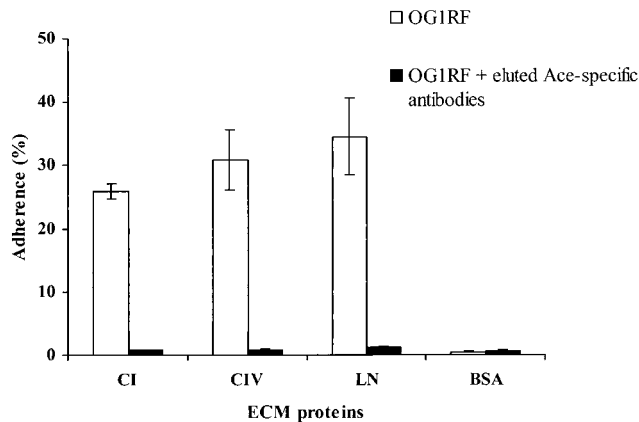


FIG. 3. Inhibition of adherence of *E. faecalis* OG1RF to ECM proteins by eluted Ace A-specific antibodies. These antibodies were eluted with recombinant Ace A on the Western blot and were from anti-Ace A polyclonal immune serum. Labeled bacteria were incubated with 1  $\mu$ g of eluted Ace-specific antibodies per ml for 1 h at 37°C. Adherence was tested in wells coated with 1  $\mu$ g of ECM proteins (see text). Bars represent the mean percentages of cells bound  $\pm$  standard deviations for four wells. Results are representative of two independent experiments.

followed by detection with anti-CIV monoclonal antibodies, identified a single  $\sim$ 105-kDa protein band, whereas no band was detected from mutanolysin extracts of the OG1RF *ace* mutant (Fig. 4).

#### Binding of recombinant Ace A domain to ECM proteins.

The results from an ELISA demonstrating the binding of recombinant Ace A to immobilized CI, CIV, and LN are shown in Fig. 5. Binding of recombinant Ace protein to the collagens and laminin was found to be concentration dependent and exhibited saturation kinetics. Fibrinogen, to which none of the *E. faecalis* isolates bound in our assay (39), was used as a control. The percentage of Ace bound to fibrinogen was the same as to BSA at all of the concentrations tested (data not shown). As evident from Fig. 5, binding of Ace A to CIV was slightly greater than its binding to CI and LN. The results from collagenase VII-treated wells showed that the binding of recombinant Ace A to CI and CIV was markedly reduced after collagenase treatment, whereas LN-coated wells were unaffected by collagenase treatment, indicating that the LN was not substantially contaminated by collagen (data not shown).

## DISCUSSION

We previously showed that the majority of *E. faecalis* isolates adhered, after growth at 46°C, to CI, CIV, and LN (39). An examination of the adherence process revealed that (i) *E. fae-*

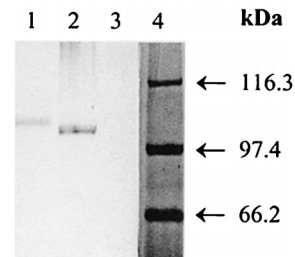


FIG. 4. Far-Western blot assay of extracts of 46°C-grown *E. faecalis* OG1RF and its *ace* mutant TX5256. OG1RF and TX5256 extracts on PVDF membrane were probed with 10  $\mu$ g of CIV per ml, and bound CIV was detected with anti-CIV monoclonal antibodies. Lanes: 1, CIV (positive control); 2 and 3, OG1RF and TX5256 mutanolysin extracts; and 4, molecular mass standards.

*calis* strain OG1RF adherence was dependent on the amounts of CI, CIV, and LN in the substrates; (ii) OG1RF adherence to ECM proteins was inhibited after preincubation of the bacteria with soluble ECM proteins; (iii) trypsin treatment of the bacteria rendered the cells nonadhesive; (iv) digestion of the CI and CIV substrates with collagenase destroyed their ability to support adhesion of strain OG1RF, whereas bacteria still adhered to collagenase-digested LN substrate; and (v) scanning electron microscopy of *E. faecalis* OG1RF adhered to LN-coated wells showed single cells evenly distributed over the substrate (39). We recently identified a gene, *ace*, in the *E. faecalis* strain V583 partial genome database that encodes a protein with a structural organization similar to the collagen binding microbial surface component recognizing adhesive matrix molecules (MSCRAMM), Cna, from *S. aureus*. Both proteins contain features characteristic of cell wall-anchored proteins at the C terminus preceded by a region composed of B repeats and an N-terminal A region. The A region of Cna contains the collagen binding domain, which has a  $\beta$ -barrel structure as revealed by X-ray analysis of protein crystals (36). One of the  $\beta$ -sheets contains a "trench" that was identified as a putative collagen binding site. Computational docking experiments showed that the binding trench could accommodate the rope-like collagen structure (23, 36). The A region of Ace has significant sequence similarity to the corresponding domain of Cna. We therefore expressed a recombinant form of the Ace A region and showed by circular dichroism spectroscopy that the secondary structures of the Ace and Cna A regions are very similar (24). In fact, computational analysis suggested that the putative ligand binding domain of Ace adopts a structure very similar to that determined for the corresponding domain of Cna with a predicted binding trench. Furthermore, the recombinant Ace A region bound CI, and antibodies raised against

TABLE 3. Inhibition of adherence of 46°C-grown *E. faecalis* clinical isolates V583 and MC02152 to ECM proteins by IgGs (20  $\mu$ g/ml) purified from anti-Ace A (OG1RF-derived) rabbit immune serum

ECM	% of cells bound <sup>a</sup>					
	V583			MC02152		
	No IgG	PI	Anti-Ace	No IgG	PI	Anti-Ace
CI	29.2 $\pm$ 1.87	28.1 $\pm$ 2.84	3.2 $\pm$ 0.17	26.0 $\pm$ 1.61	24.4 $\pm$ 1.31	2.9 $\pm$ 0.46
CIV	38.1 $\pm$ 8.66	33.6 $\pm$ 6.81	2.5 $\pm$ 0.17	27.7 $\pm$ 0.39	26.5 $\pm$ 1.84	2.3 $\pm$ 0.13
LN	29.4 $\pm$ 1.96	27.6 $\pm$ 3.53	2.7 $\pm$ 0.78	26.7 $\pm$ 1.22	23.5 $\pm$ 0.76	1.9 $\pm$ 0.52
BSA	0.7 $\pm$ 0.10	0.6 $\pm$ 0.07	0.6 $\pm$ 0.01	0.6 $\pm$ 0.12	0.5 $\pm$ 0.19	0.6 $\pm$ 0.17

<sup>a</sup> Values are mean percentages of cells bound  $\pm$  standard deviations for six wells. Results are representative of three independent experiments. PI, IgGs purified from preimmune rabbit serum; Anti-Ace, IgGs purified from polyclonal anti-Ace A rabbit immune serum.

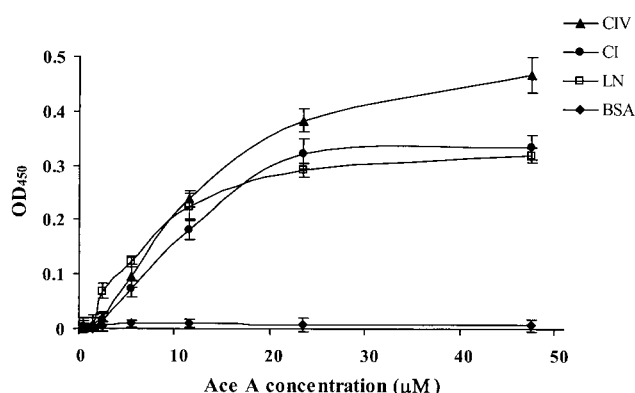


FIG. 5. Binding of recombinant Ace A to immobilized ECM proteins CI, CIV, and LN (10 µg) as a function of concentration of Ace A. BSA was used as a negative control. All OD<sub>450</sub> values were corrected for the response of penta-His monoclonal antibodies with CI, CIV, and LN, respectively. Data points represent the mean OD<sub>450</sub> values ± standard deviations for six wells representing three independent experiments.

the recombinant protein inhibited adherence of *E. faecalis* to CI substrate (24).

In the current study, we have characterized the *E. faecalis*-specific (*R. W. Duh, K. V. Singh, K. Malathum, and B. E. Murray, submitted for publication*) *ace* gene from strain OG1RF and found that an OG1RF *ace* mutant showed markedly reduced binding not only to immobilized CI, but also to CIV and LN, raising the possibility that the same MSCRAMM is responsible for adherence to the three ECM proteins. However, since this mutant was generated by a chromosomal insertion, the possibility remains that the inserted plasmid may have had a polar effect on downstream genes that are responsible for some of the observed effect.

To detect the Ace protein in *E. faecalis* OG1RF, we raised polyclonal antibodies against recombinant Ace A of OG1RF that has been expressed in *E. coli*. These anti-Ace A antibodies detected an ~105-kDa protein in 46°C-grown OG1RF, but not in 37°C-grown OG1RF; the OG1RF *ace* mutant was found to lack the ~105-kDa protein. Detection of this anti-Ace reactive band in 46°C-grown OG1RF mutanolysin extracts, but not in 37°C-grown OG1RF, correlates with the previously reported conditional (growth at 46°C) binding (39). We have also sequenced the complete *ace* gene from OG1RF (19). The deduced amino acid sequence of OG1RF Ace adhesin predicts a 75.6-kDa protein, which is ~30 kDa smaller than the observed molecular size on the Western blot. Similar results were found for Ace proteins of the other *E. faecalis* strains studied in the companion paper (19) as well as for *E. faecalis* EF1 and EF2 (24). This difference may be due to the highly acidic nature of the Ace protein (24). Another possibility is that the difference in migration might be due to association of Ace with peptidoglycan, although mutanolysin treatment is known to free at least some proteins from peptidoglycan (8). However, several lines of evidence strongly indicate that the protein identified in mutanolysin-PMSF extracts is indeed the *ace* gene product. The evidence includes the following: (i) anti-Ace A polyclonal antibodies reacted with a single ~105-kDa band in mutanolysin extracts prepared from 46°C-grown *E. faecalis* OG1RF; (ii) preimmune serum did not react with any band in these extracts; and (iii) there was loss of the ~105-kDa protein band in the *ace* insertion mutant. In a companion paper, we also report that protein size variation among various *E. faecalis* strains corresponds to the number of B repeats (19).

To confirm the direct involvement of Ace, and not possible downstream gene products, in 46°C-evoked adherence of *E. faecalis* to CI, CIV, and LN, we tested the ability of anti-Ace A IgGs to inhibit binding of *E. faecalis* OG1RF to these immobilized ECM proteins. The inhibition of the adherence of 46°C-grown OG1RF to CI, CIV, and LN by anti-Ace A IgGs as well as by eluted Ace-specific antibodies provides evidence that the ~105-kDa protein of OG1RF is the adhesin that mediates binding to these three ECM proteins. We also tested the ability of these IgGs to block adherence of the two clinical strains V583 and MC02152 after growth at 46°C. The inhibited adherence to CI, CIV, and LN by anti-Ace IgGs in these two strains further corroborates the involvement of Ace A in strains that showed conditional adherence. We confirmed the CIV affinity to the ~105-kDa OG1RF Ace protein by using a far-Western blot and then extended this result to test the binding ability of the recombinant Ace A domain to CI, CIV, and LN in an ELISA. In the ELISAs, OG1RF-derived recombinant Ace A protein bound to CI as well as to CIV and LN. These ELISA results implicate the A domain of Ace in binding to CI, CIV, and LN. It is tempting to speculate that the proposed trench on the Ace A domain that has been implicated in binding the triple helix collagen structure (Y. Xu, R. T. Owens and M. Höök, unpublished results) is also responsible for binding the rigid triple helix structure of the LN long arm. By analogy, the collagen binding integrins  $\alpha 1\beta 1$  and  $\alpha 2\beta 1$ , both of which both contain a trench in the binding domain, have been shown to bind LN in addition to several types of collagens, including CI and CIV (3, 21, 32).

Similar to the *E. faecalis* Ace adhesin, other adhesins have been reported to bind to different ECM proteins. The plasmid-encoded outer membrane protein YadA of *Yersinia enterocolitica* has been shown to bind to several types of collagens (27), LN (4, 29), and fibronectin (37). A 150-kDa fibrinogen binding adhesin of *Porphyromonas (Bacteroides) gingivalis* also recognized fibronectin (9, 10). Switalski et al. (34) showed that the collagen-binding MSCRAMM from *S. aureus* (later identified as Cna) recognizes many types of collagens and McGavin et al. (15) identified an *S. aureus* surface protein that could bind with broad specificity to several ECM proteins, including fibrinogen, fibronectin, and vitronectin.

In conclusion, the results from the constructed OG1RF *ace* mutant and the inhibition of binding of OG1RF and of two clinical isolates to all three ECM proteins by anti-Ace A antibodies demonstrate that the A domain of Ace mediates adherence of *E. faecalis* to CIV and LN in addition to CI. Further supporting evidence for Ace A-mediated binding was obtained from the CIV far-Western analysis and the ELISAs showing binding of recombinant Ace A to both collagens and LN. Additional studies will be needed to determine what if any contribution *ace* may make to the ability of *E. faecalis* to colonize and/or cause infection in humans.

#### ACKNOWLEDGMENT

This work was supported by NIH grant AI33516 from NIAID, the Division of Microbiology and Infectious Diseases, to B. E. Murray.

#### REFERENCES

1. Beck, K., I. Hunter, and J. Engel. 1990. Structure and function of laminin: anatomy of a multidomain glycoprotein. *FASEB J.* 4:148-160.
2. Engel, J. 1992. Laminins and other strange proteins. *Biochemistry* 31:10643-10651.
3. Ettner, N., W. Göhring, T. Sasaki, K. Mann, and R. Timpl. 1998. The N-terminal globular domain of the laminin  $\alpha 1$  chain binds to  $\alpha 1\beta 1$  and  $\alpha 2\beta 1$  integrins and to the heparan sulfate-containing domains of perlecan. *FEBS Lett.* 430:217-221.
4. Flügel, A., H. Schulze-Koops, J. Heesemann, K. Kühn, L. Sorokin, H.

- Burkhardt, K. von der Mark, and F. Emmrich. 1994. Interaction of enteropathogenic *Yersinia enterocolitica* with complex basement membranes and the extracellular matrix proteins collagen type IV, laminin-1 and -2, and nidogen/entactin. *J. Biol. Chem.* **269**:29732–29738.
5. Foster, T. J., and M. Höök. 1998. Surface protein adhesins of *Staphylococcus aureus*. *Trends Microbiol.* **6**:484–488.
  6. Gehlsen, K. R., L. Dillner, E. Engvall, and E. Ruoslahti. 1988. The human laminin receptor is a member of the integrin family of cell adhesion receptors. *Science* **241**:1228–1229.
  7. Harlow, E., and D. Lane. 1988. *Antibodies: a laboratory manual*. Cold Spring Harbor Laboratory Press, Cold Spring Harbor, N.Y.
  8. Juarez, Z. E., and M. W. Stinson. 1999. An extracellular protease of *Streptococcus gordonii* hydrolyzes type IV collagen and collagen analogues. *Infect. Immun.* **67**:271–278.
  9. Lantz, M. S., R. D. Allen, P. Bounelis, L. M. Switalski, and M. Höök. 1990. *Bacteroides gingivalis* and *Bacteroides intermedius* recognize different sites on human fibrinogen. *J. Bacteriol.* **172**:716–726.
  10. Lantz, M. S., R. D. Allen, L. W. Duck, J. L. Blume, L. M. Switalski, and M. Höök. 1991. Identification of *Porphyromonas gingivalis* components that mediate its interactions with fibronectin. *J. Bacteriol.* **173**:4263–4270.
  11. Li, X., G. M. Weinstock, and B. E. Murray. 1995. Generation of auxotrophic mutants of *Enterococcus faecalis*. *J. Bacteriol.* **177**:6866–6873.
  12. Lindmark, H., and B. Guss. 1999. SFS, a novel fibronectin-binding protein from *Streptococcus equi*, inhibits the binding between fibronectin and collagen. *Infect. Immun.* **67**:2383–2388.
  13. Ljungh, A., A. P. Moran, and T. Wadström. 1996. Interactions of bacterial adhesins with extracellular matrix and plasma proteins: pathogenic implications and therapeutic possibilities. *FEMS Immunol. Med. Microbiol.* **16**:117–126.
  14. Lopes, J. D., M. dos Reis, and R. R. Brentani. 1985. Presence of laminin receptors in *Staphylococcus aureus*. *Science* **229**:275–277.
  15. McGavin, M. H., D. Krajewska-Pietrasik, C. Rydén, and M. Höök. 1993. Identification of a *Staphylococcus aureus* extracellular matrix-binding protein with broad specificity. *Infect. Immun.* **61**:2479–2485.
  16. Miller, E. J., and S. Gay. 1987. The collagens: an overview and update. *Methods Enzymol.* **144**:3–41.
  17. Murray, B. E., K. V. Singh, J. D. Heath, B. R. Sharma, and G. M. Weinstock. 1990. Comparison of genomic DNAs of different enterococcal isolates using restriction endonucleases with infrequent recognition sites. *J. Clin. Microbiol.* **28**:2059–2063.
  18. Murray, B. E., K. V. Singh, R. P. Ross, J. D. Heath, G. M. Dunny, and G. M. Weinstock. 1993. Generation of restriction map of *Enterococcus faecalis* OG1 and investigation of growth requirements and regions encoding biosynthetic function. *J. Bacteriol.* **175**:5216–5223.
  19. Nallapareddy, S. R., K. V. Singh, R.-W. Duh, G. M. Weinstock, and B. E. Murray. Diversity of *ace*, a gene encoding a microbial surface component recognizing adhesive matrix molecules, from different strains of *Enterococcus faecalis* and evidence for production of Ace during human infections. *Infect. Immun.* **68**:5210–5217.
  20. Patti, J. M., H. Jonsson, B. Guss, L. M. Switalski, K. Wiberg, M. Lindberg, and M. Höök. 1992. Molecular characterization and expression of a gene encoding a *Staphylococcus aureus* collagen adhesin. *J. Biol. Chem.* **267**:4766–4772.
  21. Pfaff, M., W. Göhring, J. C. Brown, and R. Timpl. 1994. Binding of purified collagen receptors ( $\alpha 1\beta 1$ ,  $\alpha 2\beta 1$ ) and RGD-dependent integrins to laminins and laminin fragments. *Eur. J. Biochem.* **225**:975–984.
  22. Qin, X., F. Teng, Y. Xu, K. V. Singh, G. M. Weinstock, and B. E. Murray. 1998. Targeted mutagenesis of enterococcal genes. *Methods Cell Sci.* **20**:21–33.
  23. Rich, R. L., B. Demeler, K. Ashby, C. C. S. Deivanayagam, J. W. Petrich, J. M. Patti, S. V. L. Narayana, and M. Höök. 1998. Domain structure of the *Staphylococcus aureus* collagen adhesin. *Biochemistry* **37**:15423–15433.
  24. Rich, R. L., B. Kreikemeyer, R. T. Owens, S. LaBrenz, S. V. L. Narayana, G. M. Weinstock, B. E. Murray, and M. Höök. 1999. Ace is a collagen-binding MSCRAMM from *Enterococcus faecalis*. *J. Biol. Chem.* **274**:26939–26945.
  25. Sahn, D. F., J. Kissinger, M. S. Gilmore, P. R. Murray, R. Mulder, J. Solliday, and B. Clarke. 1989. In vitro susceptibility studies of vancomycin-resistant *Enterococcus faecalis*. *Antimicrob. Agents Chemother.* **33**:1588–1591.
  26. Sambrook, J., E. F. Fritsch, and T. Maniatis. 1989. *Molecular cloning: a laboratory manual*, 2nd ed. Cold Spring Harbor Laboratory Press, Cold Spring Harbor, N.Y.
  27. Schulze-Koops, H., H. Burkhardt, J. Heesemann, K. von der Mark, and F. Emmrich. 1992. Plasmid-encoded outer membrane protein YadA mediates specific binding of enteropathogenic yersiniae to various types of collagen. *Infect. Immun.* **60**:2153–2159.
  28. Singh, K. V., X. Qin, G. M. Weinstock, and B. E. Murray. 1998. Generation and testing of mutants of *Enterococcus faecalis* in a mouse peritonitis model. *J. Infect. Dis.* **178**:1416–1420.
  29. Skurnik, M., Y. el Tahir, M. Saarinen, S. Jalkanen, and P. Toivanen. 1994. YadA mediates specific binding of enteropathogenic *Yersinia enterocolitica* to human intestinal submucosa. *Infect. Immun.* **62**:1252–1261.
  30. Spellerberg, B., E. Rozdzinski, S. Martin, J. Weber-Heynemann, N. Schnitzler, R. Lütticken, and A. Podbielski. 1999. Lmb, a protein with similarities to the LraI adhesin family, mediates attachment of *Streptococcus agalactiae* to human laminin. *Infect. Immun.* **67**:871–878.
  31. Speziale, P., G. Raucci, L. Visai, L. M. Switalski, R. Timpl, and M. Höök. 1986. Binding of collagen to *Staphylococcus aureus* Cowan 1. *J. Bacteriol.* **167**:77–81.
  32. Sung, U., J. J. O'Rear, and P. D. Yurchenco. 1993. Cell and heparin binding in the distal long arm of laminin: identification of active and cryptic sites with recombinant and hybrid glycoprotein. *J. Cell Biol.* **123**:1255–1268.
  33. Switalski, L. M., H. Murchison, R. Timpl, R. Curtiss III, and M. Höök. 1987. Binding of laminin to oral and endocarditis strains of viridans streptococci. *J. Bacteriol.* **169**:1095–1101.
  34. Switalski, L. M., P. Speziale, and M. Höök. 1989. Isolation and characterization of a putative collagen receptor from *Staphylococcus aureus* strain Cowan 1. *J. Biol. Chem.* **264**:21080–21086.
  35. Switalski, L. M., P. Speziale, M. Höök, T. Wadström, and R. Timpl. 1984. Binding of *Streptococcus pyogenes* to laminin. *J. Biol. Chem.* **259**:3734–3738.
  36. Symersky, J., J. M. Patti, M. Carson, K. House-Pompeo, M. Teale, D. Moore, L. Jin, A. Schneider, L. J. DeLucas, M. Höök, and S. V. L. Narayana. 1997. Structure of the collagen-binding domain from a *Staphylococcus aureus* adhesin. *Nat. Struct. Biol.* **4**:833–838.
  37. Terti, R., M. Skurnik, T. Vartio, and P. Kussela. 1992. Adhesion protein YadA of *Yersinia* species mediates binding of bacteria to fibronectin. *Infect. Immun.* **60**:3021–3024.
  38. Westerlund, B., and T. K. Korhonen. 1993. Bacterial proteins binding to the mammalian extracellular matrix. *Mol. Microbiol.* **9**:687–694.
  39. Xiao, J., M. Höök, G. M. Weinstock, and B. E. Murray. 1998. Conditional adherence of *Enterococcus faecalis* to extracellular matrix proteins. *FEMS Immunol. Med. Microbiol.* **21**:287–295.
  40. Yurchenco, P. D., and J. C. Schittny. 1990. Molecular architecture of basement membranes. *FASEB J.* **4**:1577–1590.

Editor: E. I. Tuomanen