

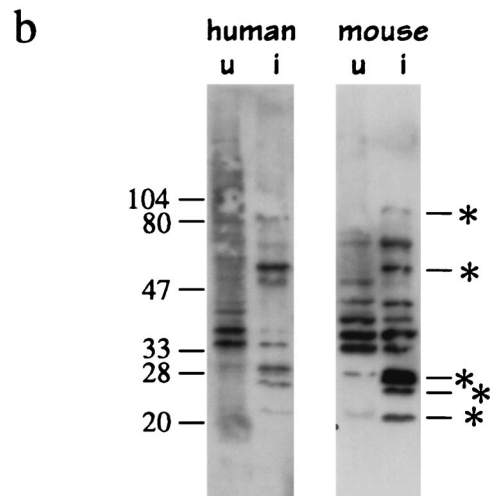
ERRATA

Antibody-Mediated Elimination of the Obligate Intracellular Bacterial Pathogen *Ehrlichia chaffeensis* during Active Infection

GARY M. WINSLOW, ERIC YAGER, KONSTANTIN SHILO, ERIN VOLK,
ANDREW REILLY, AND FREDERICK K. CHU

Wadsworth Center, New York State Department of Health, Albany, New York 12201-2002, and Department of Biomedical Sciences, School of Public Health, University at Albany, Albany, New York 12201-0509

Volume 68, no. 4, p. 2187–2195. Page 2191, Fig. 3: Panel b should appear as shown below.



Identification by Subtractive Hybridization of a Novel Insertion Sequence Specific for Virulent Strains of *Porphyromonas gingivalis*

KOICHI SAWADA, SUSUMU KOKEGUCHI, HIROSHI HONGYO, SATOKO SAWADA,
MANABU MIYAMOTO, HIROSHI MAEDA, FUSANORI NISHIMURA,
SHOGO TAKASHIBA, AND YOJI MURAYAMA

*Department of Periodontology and Endodontology and Department of Orthodontics,
Okayama University Dental School, Okayama 700-8525, Japan*

Volume 67, no. 11, p. 5621–5625, 1999. Page 5622, column 1, line 8 from bottom: “1.8 and 6.0 kb” should read “2.0 and 15.0 kb.”
Page 5623, column 1, lines 5 and 6 from bottom: “1.8 to 6.0 kb” should read “2.0 to 15.0 kb.”
Page 5623, column 2, line 11 from bottom: “1.8 and 6.0 kb” should read “2.0 and 15.0 kb.”
Page 5623, column 2, lines 9 and 10 from bottom: “2.3 and 5.0 kb” should read “4.0 and 13.0 kb.”
Page 5623, column 2, Fig. 3: Figure 3 should appear as shown below.

