



## Correction: Performance of PfHRP2-RDT for malaria diagnosis during the first year of life in a high malaria transmission area in Burkina Faso

Hamtandi Magloire Natama<sup>1</sup> · Tiampan Edwig Traoré<sup>1</sup> · Toussaint Rouamba<sup>1</sup> · M. Athanase Somé<sup>1</sup> · Serge Henri Zango<sup>1</sup> · Eduard Rovira-Vallbona<sup>2</sup> · Hermann Sorgho<sup>1</sup> · Pieter Guetens<sup>3</sup> · Maminata Coulibaly-Traoré<sup>1</sup> · Innocent Valéa<sup>1</sup> · Halidou Tinto<sup>1</sup> · Anna Rosanas-Urgell<sup>3</sup>

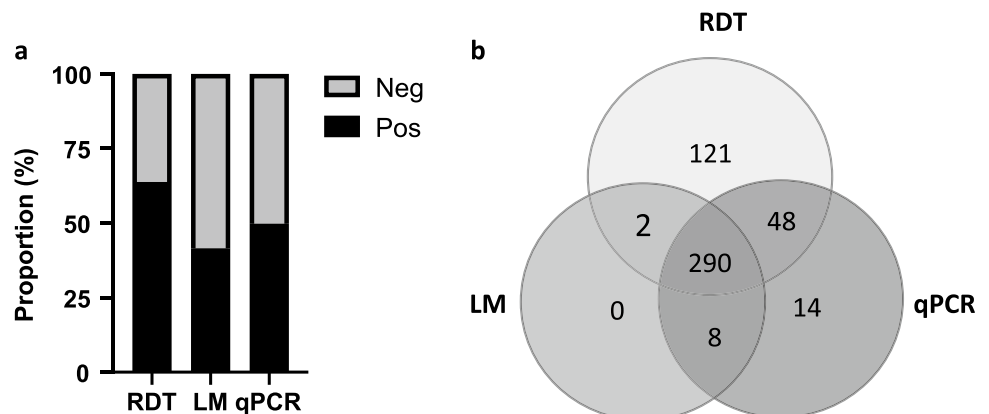
Accepted: 8 February 2023 / Published online: 22 February 2023  
© Indian Society for Parasitology 2023

**Correction to: Journal of Parasitic Diseases**  
<https://doi.org/10.1007/s12639-023-01566-x>

**Publisher's Note** Springer Nature remains neutral with regard to jurisdictional claims in published maps and institutional affiliations.

In this article, the format of Fig. 2[a and b] was published incorrectly; the Fig. 2 should have appeared as shown below.

**Fig. 2** Malaria diagnosis by RDT, LM and qPCR. (a) Stacked bar chart showing the relative proportion of positive samples per diagnostic tool; (b) Venn diagram showing matched and discrepancy positive results between SD-Bioline Malaria RDT P.f<sup>®</sup>, LM and qPCR



The original article can be found online at <https://doi.org/10.1007/s12639-023-01566-x>.

✉ Hamtandi Magloire Natama  
natamagloire@yahoo.fr

<sup>1</sup> Institut de Recherche en Sciences de La Santé (IRSS), Unité de Recherche Clinique de Nanoro, Nanoro, Burkina Faso

<sup>2</sup> Universitat de Barcelona, Barcelona Institute for Global Health (ISGlobal), Barcelona, Spain

<sup>3</sup> Department of Biomedical Sciences, Institute of Tropical Medicine, Antwerp, Belgium