

**CORRECTION**

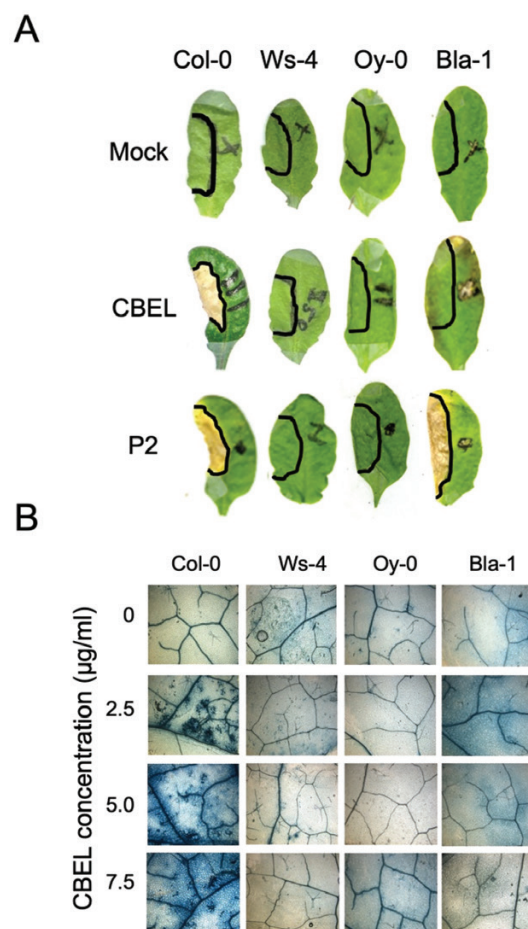
## Correction: Pathogen-associated molecular pattern-triggered immunity and resistance to the root pathogen *Phytophthora parasitica* in *Arabidopsis*

This is a correction to: Pathogen-associated molecular pattern-triggered immunity and resistance to the root pathogen *Phytophthora parasitica* in *Arabidopsis*, *Journal of Experimental Botany*, Volume 64, Issue 12, September 2013, Pages 3615–3625, <https://doi.org/10.1093/jxb/ert195>

The authors would like to correct parts of [Figure 3](#) and [Figure 7](#) that were included by mistake in the originally published manuscript.

These errors did not affect the conclusions drawn.

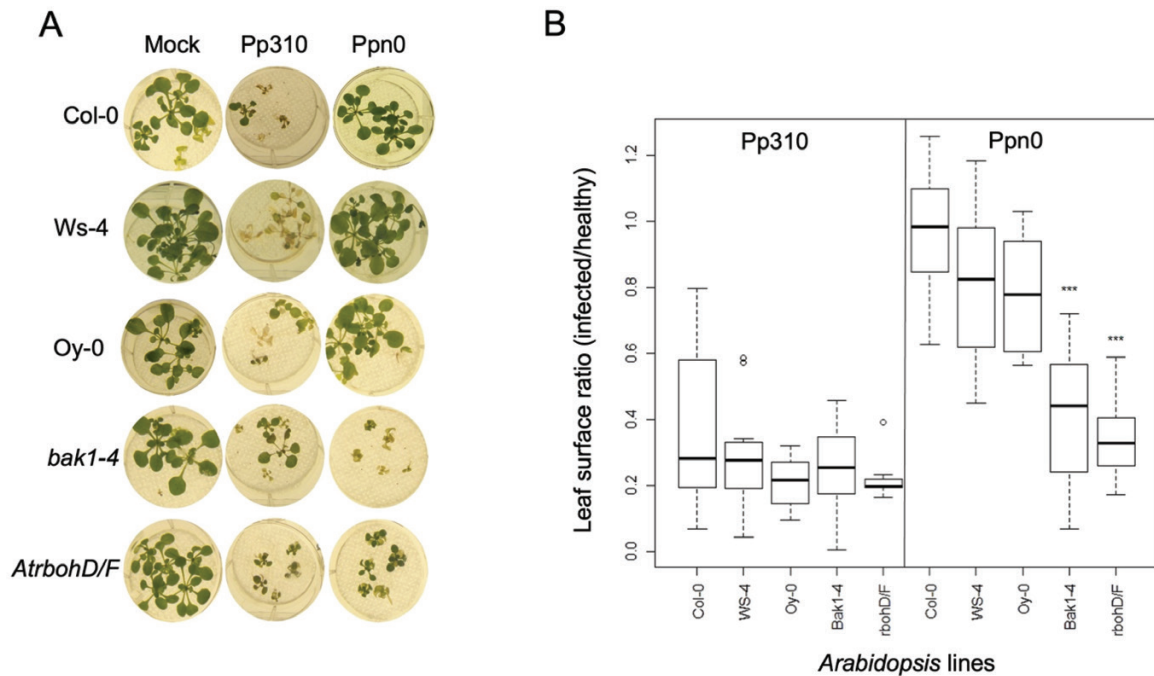
[Figure 3B](#) originally included an incorrect image for Col-0 infiltrated with 7.5 µg/ml CBEL. The corrected version of [Figure 3](#) is given below:



**Figure 3:** Identification of *Arabidopsis* lines insensitive to cellulose binding elicitor lectin (CBEL). (A) *Arabidopsis* leaves (Col-0, Ws-4, Oy-0, Bla-1) treated with mock, CBEL (5 µg ml<sup>-1</sup>), and P2 (50 µg ml<sup>-1</sup>) 10 days later after infiltration. (B) Trypan blue staining of the CBEL-infiltrated area 48h after treatment.

Figure 7A originally included incorrect images for Col-0 inoculated with *Phytophthora parasitica* Pp310, Col-0 inoculated with *Phytophthora parasitica* Ppn0, and for the Oy-0 mock control.

The corrected version of Figure 7 is given below. Representative images of different experimental replicates are shown that were grown under the same conditions at different times:



**Figure 7:** Susceptibility of *Arabidopsis* mutants and lines to *Phytophthora parasitica*. Seedlings grown on liquid MS medium were inoculated with  $10^3$  zoospores from *Phytophthora parasitica* Pp310 and Ppn0 strains as indicated. (A) Symptoms obtained 7 days after inoculation. Representative images of different experimental replicates are shown that were grown under the same conditions at different times. (B) Quantification of disease was achieved by measuring the ratio of green leaf area between inoculated and healthy plants. Analysis of variance was performed to detect potential 'line' and 'strain' effects on the ratio of inoculated to non-inoculated leaf green area. Following ANOVA, pairwise Student t-test identified those lines which differed significantly from others in terms of response to *Phytophthora* strains. \*\*\*  $P < 0.001$ . The data presented are 10–15 independent replicates.

These details have been corrected only in this correction notice to preserve the published version of record.