

Astaxanthin inhibits integrin $\alpha 5$ expression by suppressing activation of JAK1/STAT3 in *Helicobacter pylori*-stimulated gastric epithelial cells

JIEUN WOO, JOO WEON LIM and HYEYOUNG KIM

Department of Food and Nutrition, College of Human Ecology, Yonsei University, Seoul 03722, Republic of Korea

Received December 23, 2022; Accepted April 27, 2023

DOI: 10.3892/mmr.2023.13014

Abstract. Integrins act as cell-matrix adhesion molecules involved in cell attachment to the extracellular matrix and generate signals that respond to cancer metastasis. Integrin $\alpha 5\beta 1$ is a heterodimer with $\alpha 5$ and $\beta 1$ subunits and mediates cell adhesion and migration of cancer cells. Integrins are transcriptionally regulated by the Janus kinase (JAK)/STAT signaling pathways. Our previous study revealed that *Helicobacter pylori* increased the levels of reactive oxygen species (ROS), which activate JAK1/STAT3 in gastric cancer AGS cells *in vitro*. Astaxanthin (ASX) has been reported to be an effective antioxidant and anticancer nutrient. The present study investigated whether ASX suppresses *H. pylori*-induced integrin $\alpha 5$ expression, cell adhesion and migration and whether ASX reduces ROS levels and suppresses phosphorylation of JAK1/STAT3 in gastric cancer AGS cells stimulated with *H. pylori*. The effect of ASX was determined using a dichlorofluorescein fluorescence assay, western blot analysis, adhesion assay and wound-healing assay in AGS cells stimulated with *H. pylori*. The results demonstrated that *H. pylori* increased the expression levels of integrin $\alpha 5$, without affecting integrin $\beta 1$, and increased cell adhesion and migration of AGS cells. ASX reduced ROS levels and suppressed JAK1/STAT3 activation, integrin $\alpha 5$ expression, cell adhesion and migration of *H. pylori*-stimulated AGS cells. In addition, both a JAK/STAT inhibitor, AG490, and an integrin $\alpha 5\beta 1$ antagonist, K34C, suppressed cell adhesion and migration in *H. pylori*-stimulated AGS cells. AG490 inhibited integrin $\alpha 5$ expression in AGS cells stimulated with *H. pylori*. In conclusion, ASX inhibited *H. pylori*-induced integrin $\alpha 5$ -mediated cell adhesion and migration by decreasing the levels of ROS

and suppressing JAK1/STAT3 activation in gastric epithelial cells.

Introduction

Helicobacter pylori is the major pathogen in atrophic gastritis, peptic ulcers and gastric cancer (1). The underlying mechanism of *H. pylori*-mediated gastric carcinogenesis is the production of reactive oxygen species (ROS) by neutrophil activation or by *H. pylori* itself in the infected gastric epithelial cells (2). Our previous studies indicated that *H. pylori* induced NADPH oxidase activation, resulting in increased production of ROS in human gastric epithelial cells (3,4).

ROS are composed of hydroxyl radicals, superoxide anion and hydrogen peroxide (5). The normal range of ROS levels can be strictly controlled by antioxidant defense systems such as superoxide dismutase (SOD), catalase and glutathione peroxidase in mammalian cells (6). However, excessive ROS generation potentially causes oxidative stress, which leads to tumor initiation, growth and progression, resulting in cancer development (6-8). ROS activate Janus kinase (JAK)/STAT signaling and phosphorylate STAT3 in stem cells and a human salivary gland cell line (9,10). Inflammatory stimuli such as cytokines potentially activate JAKs via phosphorylation; thereafter, activated JAKs recruit STATs (11). Activated/phosphorylated (p-)STATs form dimers that translocate from the cytoplasm to the nucleus, regulating the expression of pro-inflammatory genes such as interleukin-6 by binding to specific promoter sequences (12). Activated STAT3 mediates the expression of cancer-inducing genes related to tumor cell survival, migration and metastasis (13,14) such as integrin $\beta 6$ (15).

Integrins are heterodimeric, transmembrane proteins that comprise α and β subunits (16). Mammals possess 18 α and eight β integrin subunits that combine to form 24 types of $\alpha\beta$ integrin heterodimers (17). Different integrin heterodimers bind to different extracellular ligands and distinct integrin heterodimers are present in various tissues (18). Among these integrins, integrin $\alpha 5\beta 1$ is a heterodimer with $\alpha 5$ and $\beta 1$ subunits. Integrin $\alpha 5\beta 1$ is related to tumor metastasis and carcinogenesis (17). Integrin-mediated cell adhesion serves an important role in cancer metastasis by inducing further cell migration and invasion (19,20). Integrin $\alpha 5$ promotes migration and invasion through STAT3 signaling in non-small cell lung cancer cells (21).

Correspondence to: Dr Joo Weon Lim or Professor Hyeeyoung Kim, Department of Food and Nutrition, College of Human Ecology, Yonsei University, 50 Yonsei-ro, Seodaemun, Seoul 03722, Republic of Korea

E-mail: jwlim11@yonsei.ac.kr

E-mail: kim626@yonsei.ac.kr

Key words: adhesion, astaxanthin, *Helicobacter pylori*, integrin, migration

Our previous study showed that an *H. pylori* strain originally isolated from a Korean patient (HP99) increased integrin $\alpha 5/\beta 1$ expression, which was inhibited by treatment with diphenyleneiodonium chloride, an inhibitor of NADPH oxidase in AGS cells (22). The results clearly demonstrated the involvement of NADPH oxidase in *H. pylori*-induced integrin expression. In addition, HP99 induces the expression of proteinase-activated receptor-2, which mediates $\alpha 5/\beta 1$ expression and cell adhesion to fibronectin in gastric epithelial AGS cells (23). A study using a cDNA microarray of 352 cancer-related genes demonstrated that *H. pylori* (strain NCTC11637) increased integrin $\alpha 5$ expression in AGS cells (24). Since *H. pylori* increases ROS-mediated activation of the JAK1/STAT3 signaling pathway in AGS cells (25), JAK1/STAT3 may be involved in the upregulation of integrin expression in *H. pylori*-stimulated AGS cells.

Astaxanthin (ASX) is a red-orange and lipid-soluble oxycarotenoid pigment (26). It is found in seafood such as shrimp, lobster, trout, krill and salmon (26). ASX can scavenge ROS in both the inner and outer membrane of the cells (27). Therefore, ASX may inhibit development of oxidative stress-induced diseases, including inflammatory diseases (28). Furthermore, ASX has anticancer effects, inducing anti-proliferative activity and suppressing cell migration and invasion in colorectal cancer, breast cancer, melanoma, gastric cancer and oral cancer cells (29-31). By inhibiting matrix metalloproteinase-1, -2 and -9 expression, ASX suppresses melanoma cancer cell migration and metastasis (30). ASX inhibits cancer development and progression by inhibiting STAT3 signaling in oral squamous carcinoma cells (31). Another study demonstrated that, in *H. pylori*-stimulated cells, ASX treatment activated peroxisome proliferator-activated receptor γ (PPAR- γ) to induce the expression of its downstream antioxidant gene catalase, and suppressed intracellular and mitochondrial ROS production (32). Furthermore, ASX prevents *H. pylori*-induced decreases in SOD2 levels and SOD activity, and reduces mitochondrial ROS in gastric epithelial cells (33). Therefore, ASX may suppress *H. pylori*-induced cell adhesion and migration by reducing ROS-mediated activation of STAT3 and expression of integrins in gastric epithelial cells.

The present study aimed to determine whether ASX suppresses integrin $\alpha 5/\beta 1$ expression, cell adhesion and migration by inhibiting the JAK1/STAT3 signaling pathway in *H. pylori*-stimulated gastric epithelial cells. In addition, integrin $\alpha 5/\beta 1$ expression, cell adhesion and migration were determined after treatment with a JAK/STAT inhibitor, AG490, and an integrin $\alpha 5/\beta 1$ antagonist, K34C, in *H. pylori*-stimulated cells.

Materials and methods

Cell line and culture conditions. The AGS human gastric epithelial cell line (CRL 1739) was obtained from American Type Culture Collection. Cells were cultured in complete medium comprising RPMI 1640 medium (Gibco; Thermo Fisher Scientific, Inc.) supplemented with 100 U/ml penicillin, 2 mM glutamine, 10% FBS (Gibco; Thermo Fisher Scientific, Inc.) and 100 μ g/ml streptomycin. Subsequently, the cells were cultured in a cell incubator at 37°C in a humidified atmosphere with 95% air and 5% CO₂.

Bacterial strain. *H. pylori*, strain NCTC11637 [cytotoxin-associated gene (cag) A⁺, vacuolating cytotoxin gene

(vac) A⁺ strain], was obtained from American Type Culture Collection. The bacterium was inoculated on chocolate agar plates (Becton, Dickinson and Company) at 37°C under micro-aerophilic conditions (low levels of dioxygen but CO₂-enriched environment) using an anaerobic chamber (BBL Campy Pouch® System; Becton, Dickinson and Company).

Reagents. ASX (Sigma-Aldrich; Merck KGaA) was dissolved in DMSO at 4 mM and stored in nitrogen gas at -80°C. Before use for treatment, the ASX stock solution was thawed at 21-23°C and diluted in 100% FBS to the desired concentrations (final concentration of 1 and 5 μ M). The JAK/STAT inhibitor AG490 (cat. no. T3434; R&D Systems, Inc.) and integrin $\alpha 5/\beta 1$ antagonist K34C (*N*-(2,6-Dimethylbenzoyl)-*O*-[3-(2-pyridinylamino)propyl]-L-tyrosine; cat. no. 5114; R&D Systems, Inc.) were dissolved in DMSO at 50 mM.

Culture of AGS cells with *H. pylori*. AGS cells (8x10⁴/2 ml or 4x10⁵/10 ml) were seeded and cultured overnight to achieve 80% confluency. Whole *H. pylori* was harvested from the chocolate agar plates, suspended in antibiotic-free RPMI 1640 medium supplemented with 10% FBS, and subsequently added to the cells. The cells were culture with *H. pylori* in a cell incubator at 37°C in a humidified atmosphere with 95% air and 5% CO₂ at a ratio of 1:50 for 30 min (to determine the levels of intracellular ROS, p-JAK1, JAK1, p-STAT3 and STAT3), 6 h (to determine the expression levels of integrin $\alpha 5$ and $\beta 1$), 20 h (for the migration assay) and 24 h (for the adhesion assay).

Experimental protocol. AGS cells [1.5x10⁵/2 ml (for measurement of intracellular ROS levels) or 7.5x10⁵/10 ml (for Western blot analysis)] were treated at 37°C with ASX (1 or 5 μ M) for 3 h before stimulation with *H. pylori*. Thereafter, cells were stimulated with *H. pylori* at 37°C for 30 min (to determine the levels of intracellular ROS, p-JAK1, JAK1, p-STAT3 and STAT3), 6 h (to determine the expression levels of integrin $\alpha 5$ and $\beta 1$), 20 h (for the migration assay) and 24 h (for the adhesion assay). To determine the involvement of JAK/STAT and integrin in cell adhesion and migration, the cells were pretreated with AG490 (40 μ M) and K34C (20 μ M) at 37°C for 2 h and stimulated with *H. pylori* at 37°C for 20 h (for the migration assay) and 24 h (for the adhesion assay). For each experiment, the untreated cells were cultured with *H. pylori* for 30 min (to determine the levels of intracellular ROS, p-JAK1, JAK1, p-STAT3 and STAT3), 6 h (to determine the expression levels of integrin $\alpha 5$ and $\beta 1$), 20 h (for the migration assay) and 24 h (for the adhesion assay) with the vehicle DMSO (0.1%) alone instead of ASX, AG490 or K34C.

To determine whether AG490 and K34C have an effect on the inhibitory activity of ASX on integrin $\alpha 5$ and $\beta 1$ expression in *H. pylori*-stimulated cells, cells were pretreated with ASX (5 μ M), AG490 (40 μ M) and K34C (20 μ M) at 37°C, and then stimulated with *H. pylori* at 37°C for 6 h. The pretreatment period for ASX was 3 h, while that of AG490 or K34C was 2 h. Protein expression levels of integrin $\alpha 5$ and $\beta 1$ were determined using western blot analysis as described below.

To determine the appropriate incubation time for ROS level, activation of JAK1/STAT3, integrin expression and adhesion assays, time-course experiments were performed after stimulation of AGS cells with *H. pylori*. AGS cells (1.5x10⁵/2 ml/well

in 6-well plates) were stimulated with *H. pylori* at 37°C for 20, 30 and 60 min (for intracellular ROS levels), 15, 30 and 60 min (for total and phospho-specific levels of JAK/STAT proteins), 2, 4, 6 and 8 h (for integrin expression), or 6, 12, 18 and 24 h (for the adhesion assay).

Measurement of intracellular ROS levels. The cells were treated with 10 µg/ml dichlorofluorescein diacetate (Sigma-Aldrich; Merck KGaA) at 37°C for 30 min. Dichlorofluorescein fluorescence (excitation, 495 nm; emission, 535 nm) was detected using a Victor3 Multi-label Counter (PerkinElmer, Inc.) [https://resources.perkinelmer.com/lab-solutions/resources/docs/bro_victor3.pdf]. Intracellular ROS levels were normalized to the cell numbers and expressed as the relative percentage of control cells. Normalization was achieved by dividing intracellular ROS levels by the cell numbers.

Preparation of cell extracts. The cells were harvested using trypsin-EDTA and pelleted by centrifugation at 1,000 x g at 4°C for 5 min. The cell pellets were resuspended with lysis buffer containing 10 mM Tris (pH 7.4), 15 mM NaCl, 1% NP-40 and commercial protease inhibitor complex (Complete; Roche Diagnostics GmbH), and lysed by drawing the cells through a 1-ml syringe with several rapid strokes. The mixture was then incubated at 0°C on ice for 30 min and centrifuged at 13,000 x g at 4°C for 15 min. The supernatant was collected and used as whole-cell extracts. The protein concentration was determined by using the Bradford assay (Bio-Rad Laboratories, Inc.).

Western blot analysis. Whole-cell extracts (6–40 µg protein/lane) were loaded per lane, separated using 8–10% SDS-PAGE under reductive conditions and transferred to nitrocellulose membranes (Amersham; Cytiva) by electroblotting. Protein transfer was verified using reversible Ponceau S staining. Membranes were blocked using 3% non-fat, dry milk in TBS with 0.2% Tween 20 (TBS-T) at 21–23°C for 1 h. The proteins were detected by incubation with antibodies against integrin α5 (1:500 dilution) (cat. no. 610633; BD Biosciences), integrin β1 (1:500 dilution) (cat. no. 610467; BD Biosciences), p-JAK1 (1:300 dilution) (cat. no. 3331S; Cell Signaling Technology, Inc.), JAK1 (1:500 dilution) (cat. no. 3332S; Cell Signaling Technology, Inc.), p-STAT3 (1:200 dilution) (cat. no. 9131S; Cell Signaling Technology, Inc.), STAT3 (1:500 dilution) (cat. no. 4904S; Cell Signaling Technology, Inc.) and β-actin (1:2,000 dilution) (cat. no. sc-47778; Santa Cruz Biotechnology, Inc.) in TBS-T containing 3% dry milk overnight at 4°C. After washing with TBS-T, the primary antibodies were detected using HRP-conjugated secondary antibodies [anti-mouse (1:2,000 dilution) (cat. no. sc-2005 Santa Cruz Biotechnology, Inc.) or anti-rabbit (1:2,000 dilution) (cat. no. sc-2357 Santa Cruz Biotechnology, Inc.)] and visualized using the enhanced chemiluminescence detection system (Santa Cruz Biotechnology, Inc.) based on exposure to BioMax MR film (Kodak). The enhanced chemiluminescence detection system is comprised of a two-component kit containing a bottle of luminol substrate and a bottle of peroxide solution. The solutions are equilibrated to 21–23°C and then mixed in equal volumes directly before use. The levels of integrins were compared with those of β-actin. The levels of p-JAK1 or p-STAT3 were compared with those of total

JAK1 or total STAT3, respectively. Protein band density was semi-quantified using Image J software (version 1.46; National Institutes of Health). The data are presented as the mean ± standard error from three immunoblots and are shown as the relative density of the protein band normalized to the indicated protein (β-actin or total JAK1 or STAT3).

Adhesion assay. The adhesive potential of AGS cells stimulated with *H. pylori* was assessed using human fibronectin-coated 96-well strips (cat. no. ECM101; Sigma-Aldrich; Merck KGaA). Cells were pretreated with ASX at 37°C for 3 h and then stimulated with *H. pylori* at 37°C for 24 h. The cells were detached by incubation with 6.6 mM EDTA at 37°C for 5 min, washed with PBS and suspended in serum-free RPMI 1640 containing 0.02% BSA (Sigma-Aldrich; Merck KGaA) at a density of 1.5x10⁵ cells/ml. The cell suspension (100 µl) was added to each well of the fibronectin-coated plates and cells were incubated at 37°C for 1 h. The medium was removed from the wells and the cells were gently washed twice with PBS containing 0.9 mM Ca²⁺ and 0.5 mM Mg²⁺. The adherent cells were stained with 0.2% crystal violet in 10% ethanol for 5 min at 21–23°C and subsequently washed three times with PBS. After washing, cells were solubilized using solubilization buffer (a 50/50 mixture of 0.1 M NaH₂PO₄, pH 4.5 and 50% ethanol) at 21–23°C for 10 min, and the absorbance at 570 nm was quantified using a microplate reader. The percentage of adherent cells in the 0 h or 'None' (uninfected cells without any treatment) groups was set as 100%.

Wound-healing assay. Cells were seeded in 12-well plates and allowed to grow in a complete medium until 90–100% confluency. Subsequently, individual wells were scratched using a 200-µl micropipette tip to create a denuded zone (the 'wound space' of an artificially ruptured monolayer of AGS cells) of constant width (1 mm). Complete media were removed from these cells and replaced with RPMI-1640 containing 4% FBS. The cells were pretreated with 5 or 10 µM ASX at 37°C for 3 h and then stimulated with *H. pylori* at 37°C for 20 h. To determine cell migration, cell images were captured at baseline (0 h) and after 20 h of *H. pylori* stimulation using phase-contrast light microscopy. The final gap width of the scratch was measured and compared with the initial gap. The wound area was quantified using ImageJ software (version 1.46; National Institutes of Health).

Statistical analysis. Statistical analysis was performed using SPSS software, version 14 (SPSS, Inc). All values are presented as the mean ± standard error of three independent experiments. For each experiment, four samples were used for each group (total number for each group was 12). One-way ANOVA, followed by Tukey's post-hoc test, was used for statistical analysis. P<0.05 was considered to indicate a statistically significant difference.

Results

ASX inhibits integrin α5 expression in *H. pylori*-stimulated AGS cells. To determine whether *H. pylori* induces integrin α5 and β1 expression, AGS cells were stimulated with *H. pylori* for the indicated time periods. As shown in Fig. 1A, *H. pylori*

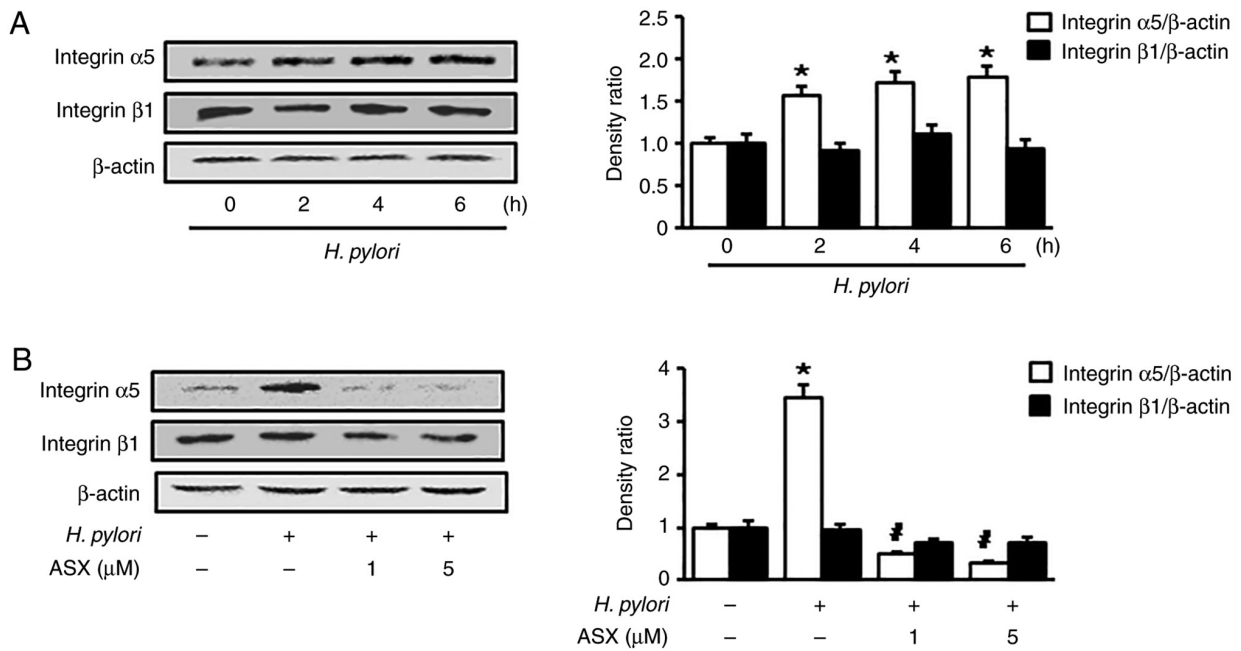


Figure 1. ASX inhibits integrin $\alpha 5$ expression in *Helicobacter pylori*-stimulated AGS cells. Western blot analysis of integrin $\alpha 5$ and $\beta 1$ in cells (A) stimulated with *H. pylori* for the indicated time periods or (B) pretreated with the indicated concentrations of ASX for 3 h, and then stimulated with *H. pylori* for 6 h. The densitometry data are presented as the mean \pm standard error from three immunoblots, and are shown as the relative density of protein bands normalized to β -actin. * $P < 0.05$ vs. (A) 0 h or (B) 'None' (unstimulated cells without ASX treatment). (B) # $P < 0.05$ vs. 'Control' (stimulated cells without ASX treatment). ASX, astaxanthin.

increased the expression levels of integrin $\alpha 5$ at 2 h, which continued to 6 h. Therefore, to measure the effect of ASX on *H. pylori*-induced integrin $\alpha 5$ expression, a 6 h-culture period was used. However, integrin $\beta 1$ expression was not altered following *H. pylori* stimulation. *H. pylori*-induced integrin $\alpha 5$ expression was suppressed by ASX treatment (final concentration, 1 and 5 μ M) at 6 h (Fig. 1B).

ASX inhibits *H. pylori*-induced cell adhesion and migration. To determine whether *H. pylori* increases the number of adherent cells, the cells were stimulated with *H. pylori* up to 24 h. *H. pylori* stimulation significantly increased the number of adherent cells at 12 h, which continued to 24 h (Fig. 2A). At 24 h of culture, the number of adherent cells in the *H. pylori*-stimulated group was two times higher compared with that of the unstimulated group ('*H. pylori* -', ASX -') (Fig. 2B). The *H. pylori*-stimulated increase in adherent cells was reduced by ASX treatment (both 1 and 5 μ M) at 24 h (Fig. 2B).

Since the percentage of wound closure reflects the migration rate, images were captured at 0 and 20 h after wounding. As shown in Fig. 2C, *H. pylori* increased the rate of wound closure, which was suppressed by ASX at 20 h.

ASX reduces ROS levels and suppresses activation of JAK1/STAT3 in *H. pylori*-stimulated cells. As shown in Fig. 3A, *H. pylori* increased intracellular ROS levels at 30 min in AGS cells. Therefore, a 30-min culture period was used to examine the effect of ASX on ROS levels in *H. pylori*-stimulated cells (Fig. 3B). Both 1 and 5 μ M ASX reduced the ROS levels, which were increased by *H. pylori* stimulation at 30 min.

Stimulation with *H. pylori* increased the p-JAK1/total-JAK1 ratio at 30 min, and this decreased at 60 min (Fig. 3C). The

p-STAT3/total-STAT3 ratio was significantly increased by *H. pylori* stimulation up to 60 min. However, the total levels of JAK1 and STAT3 were not changed by *H. pylori*. ASX markedly reduced the increased ratio of p-JAK1/total-JAK1 and p-STAT3/total-STAT3 in *H. pylori*-stimulated cells (Fig. 3D).

AG490 or K34C suppress *H. pylori*-induced integrin $\alpha 5$ expression, cell adhesion and migration. To determine the effect of JAK/STAT on integrin $\alpha 5$ expression in *H. pylori*-stimulated AGS cells, a JAK/STAT inhibitor, AG490, was used to treat the *H. pylori*-stimulated cells. AG490 reduced the *H. pylori*-induced increase in integrin $\alpha 5$ levels (Fig. 4A). To assess whether *H. pylori*-induced cell adhesion and migration are mediated by JAK/STAT activation and integrin $\alpha 5\beta 1$, AG490 and K34C, an integrin $\alpha 5\beta 1$ antagonist, were used. AG490 and K34C reduced the *H. pylori*-induced increase in adherent cells and wound closure levels (Fig. 4B and C). Therefore, *H. pylori* may increase cell adhesion and migration via JAK1/STAT3 activation and integrin $\alpha 5$ expression in AGS cells.

To determine whether AG490 and K34C have an effect on the inhibitory activity of ASX on the expression of integrin $\alpha 5$ in *H. pylori*-stimulated cells, the cells were pretreated with ASX, AG490 and K34C, followed by *H. pylori* stimulation for 6 h. The inhibitory activity of ASX on expression of integrin $\alpha 5$ was not changed by addition of AG490 in *H. pylori*-stimulated cells (Fig. 4D). As shown in Figs. 1B and 3D, the levels of integrin $\alpha 5$ expression, p-JAK1/total-JAK1 ratio, and p-STAT3/total-STAT3 ratio in *H. pylori*-stimulated cells treated with ASX (5 μ M) were lower than those of unstimulated cells (*H. pylori* -, ASX -). As shown in Fig. 4A, the level of integrin $\alpha 5$ expression in *H. pylori*-stimulated

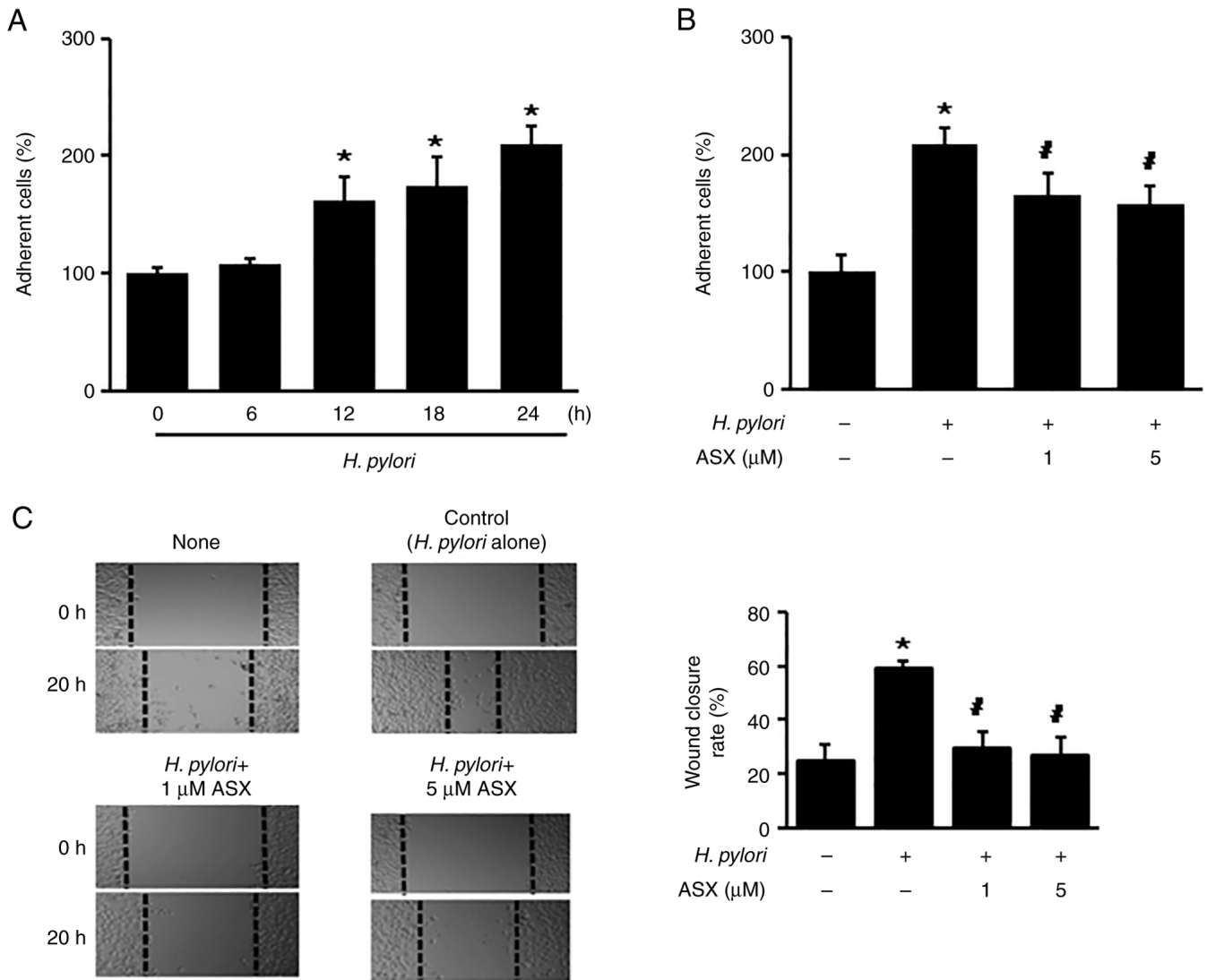


Figure 2. ASX inhibits *Helicobacter pylori*-induced cell adhesion and migration. (A) Cells were stimulated with *H. pylori* for the indicated time periods. (B) Cells were pretreated with the indicated concentrations of ASX for 3 h and then stimulated with *H. pylori* for 24 h. (A and B) Adherent cells were stained and the absorbance at 570 nm was detected. The percentage of adherent cells in the 0 h or 'None' group was set as 100%. (C) Cells were pretreated with the indicated concentrations of ASX for 3 h and then stimulated with *H. pylori* for 20 h. The wound healing assay was performed to detect cell migration. Representative images of wounds in AGS cells captured at baseline (0 h) and at 20 h (magnification, x100). Wound closure was evaluated by measuring the remaining cell-free area and expressed as a percentage of the initial cell-free area. The bar graph indicates wound closure rate (%). The results are presented as the mean \pm SE (total number of each group was 12). * $P < 0.05$ vs. 'None' (unstimulated cells without ASX treatment); # $P < 0.05$ vs. 'Control' (stimulated cells without ASX treatment). ASX, astaxanthin.

cells treated with a JAK/STAT inhibitor AG490 was similar to unstimulated cells. The results demonstrate that ASX act as an inhibitor of JAK1/STAT3 like AG490, but the inhibitory effect of ASX (5 μM) for integrin $\alpha 5$ expression was higher than the effect of AG490 (40 μM). Thus, the addition of AG490 to ASX did not have synergistic effect on inhibition by ASX on integrin $\alpha 5$ expression in *H. pylori*-stimulated cells. K34C is a selective ligand for integrin $\alpha 5\beta 1$ (34), which inhibits functions of integrin $\alpha 5\beta 1$ including migration in glioma cells (35). As shown in Fig. 4B and C, cell adhesion and migration in *H. pylori*-stimulated cells treated with of K34C (20 μM) were similar to the levels in unstimulated cells. Similarly, ASX treatment reduced *H. pylori*-induced increases in adherent cells and migration (Fig. 1B and C). These results indicate that ASX may inhibit functions of integrin $\alpha 5\beta 1$ since ASX reduced the expression of integrin $\alpha 5$ in *H. pylori*-stimulated cells. Even

though K34C is a selective functional inhibitor of integrin $\alpha 5\beta 1$, further study is necessary to determine whether K34C reduces expression of integrin $\alpha 5$ in *H. pylori*-stimulated cells.

Discussion

In the present study, ASX inhibited *H. pylori*-induced integrin $\alpha 5$ expression, cell adhesion and migration by suppressing ROS-mediated activation of JAK1/STAT3 in gastric epithelial AGS cells. In addition, both a JAK/STAT inhibitor (AG490) and an integrin $\alpha 5\beta 1$ antagonist (K34C) suppressed cell adhesion and migration in *H. pylori*-stimulated AGS cells.

For the virulence factor of *H. pylori*, cag A is a unique genomic fragment containing ~ 30 genes and is required for the secretion of the cag A protein (36). Vac A induces cytoplasmic vacuolation in gastric epithelial cells (37) and is responsible

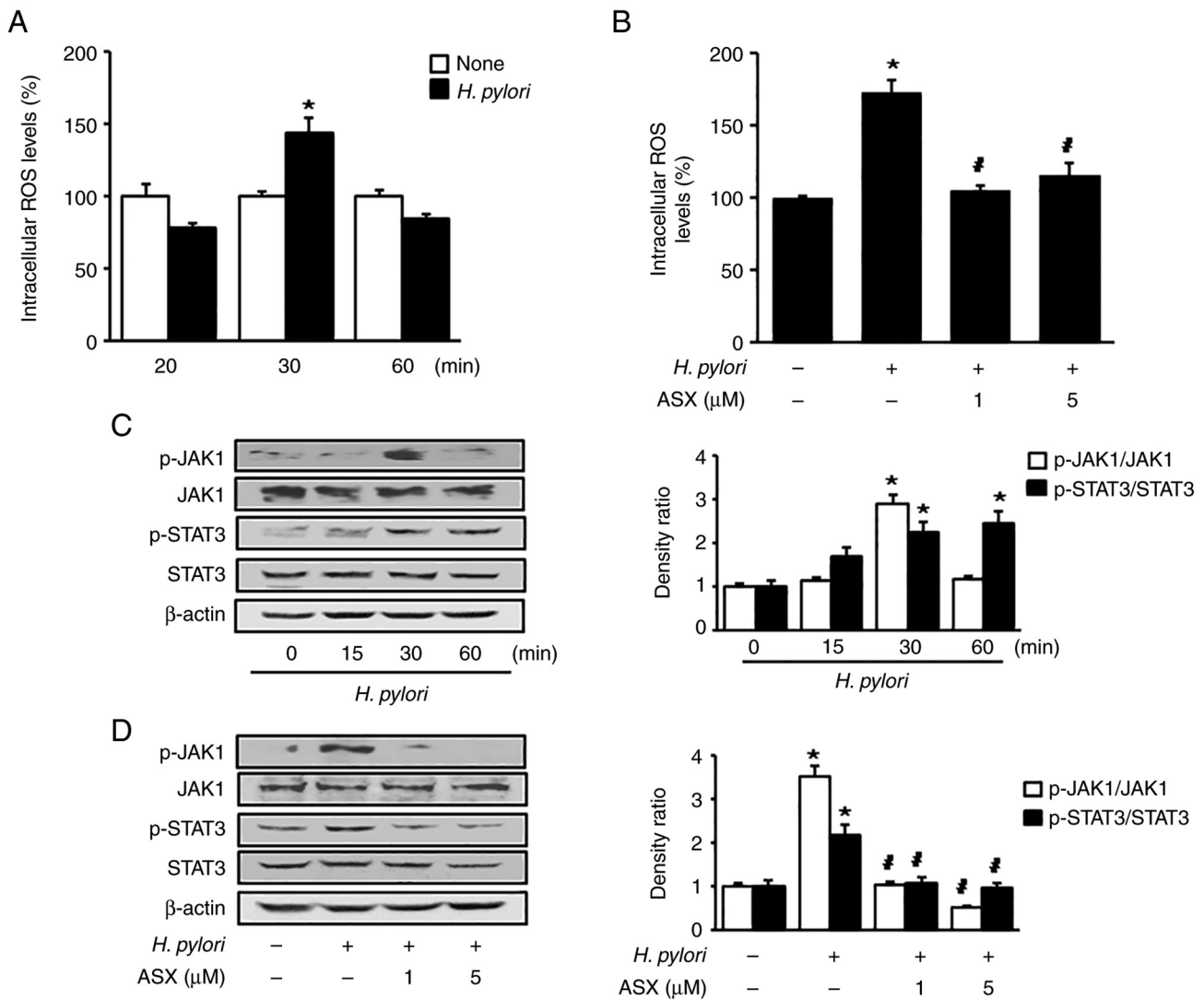


Figure 3. ASX reduces ROS levels and suppresses activation of JAK1/STAT3 in *Helicobacter pylori*-stimulated cells. (A and C) Cells were stimulated with *H. pylori* for the indicated time periods. (B and D) Cells were pre-treated with the indicated concentration of ASX for 3 h and then stimulated with *H. pylori* for 30 min. (A and B) Intracellular ROS levels were measured using dichlorofluorescein diacetate. The ROS levels in the 'None' group were set as 100%. * $P < 0.05$ vs. 'None' (unstimulated cells without ASX treatment); # $P < 0.05$ vs. 'Control' (stimulated cells without ASX treatment). (C and D) Levels of total and phosphorylated JAK1 and STAT3 were determined using western blot analysis. β -actin was used as a loading control. The densitometry data are presented as the mean \pm SE from three immunoblots, and are shown as the relative density of protein bands normalized to total JAK1 or STAT3. * $P < 0.05$ vs. (C) 0 h or (D) 'None' (unstimulated without ASX treatment). (D) # $P < 0.05$ vs. 'Control' (stimulated cells without ASX treatment). ASX, astaxanthin; JAK1, Janus kinase 1; p-, phosphorylated; ROS, reactive oxygen species.

for apoptosis in gastric epithelial cells (38). There are different allelic variants in the vac A sequence; three different families of vacA signal sequences (s1a, s1b and s2) and two different families of middle-region alleles (m1 and m2) (39). These variants are related to the differences in cytotoxin production and clinical outcomes of the *H. pylori* infection (40-42).

Regarding integrin expression in *H. pylori*-stimulated gastric epithelial cells, *H. pylori* in a Korean isolate (HP99) stimulated integrin $\alpha 5$ and $\beta 1$ expression in gastric epithelial cells (22,23). However, *H. pylori* (NCTC11637) upregulated integrin $\alpha 5$, but not integrin $\beta 1$, in gastric epithelial cells (24), which supports the present findings using NCTC11637. In a previous study by our group, HP99 was identified as *H. pylori* cag A+, vac A+ (s1, m2) strain (43), while NCTC11637 is cag A+, vac A+ (s1, m1) strain (44). These different allelic variants in the vac A sequence may

affect the expression of integrin $\alpha 5$ and $\beta 1$ expression in gastric epithelial cells.

In regard to integrin expression, cell adhesion and the virulence factor of *H. pylori*, Su *et al* (45) revealed that antibodies against $\alpha 5$ - and $\beta 1$ -integrin decreased adherence in AGS cells. Miyata *et al* (46) also demonstrated the relation of integrin $\alpha 5 \beta 1$ expression and adhesion to fibronectin in gastric cancer cells. In *H. pylori*-stimulated cells, the virulence factor cag A mediates integrin $\alpha 5 \beta 1$ expression in infected gastric epithelial cells (47). These studies showed the close relation of cag A, integrin $\alpha 5$ expression and cell adhesion in gastric epithelial cells.

To investigate the levels of ROS and JAK/STAT3, a 30 min-culture period was used, since increased ROS levels and activation of JAK1/STAT3 were observed after 30 min of stimulation with *H. pylori*. As aforementioned, cag A phosphorylation

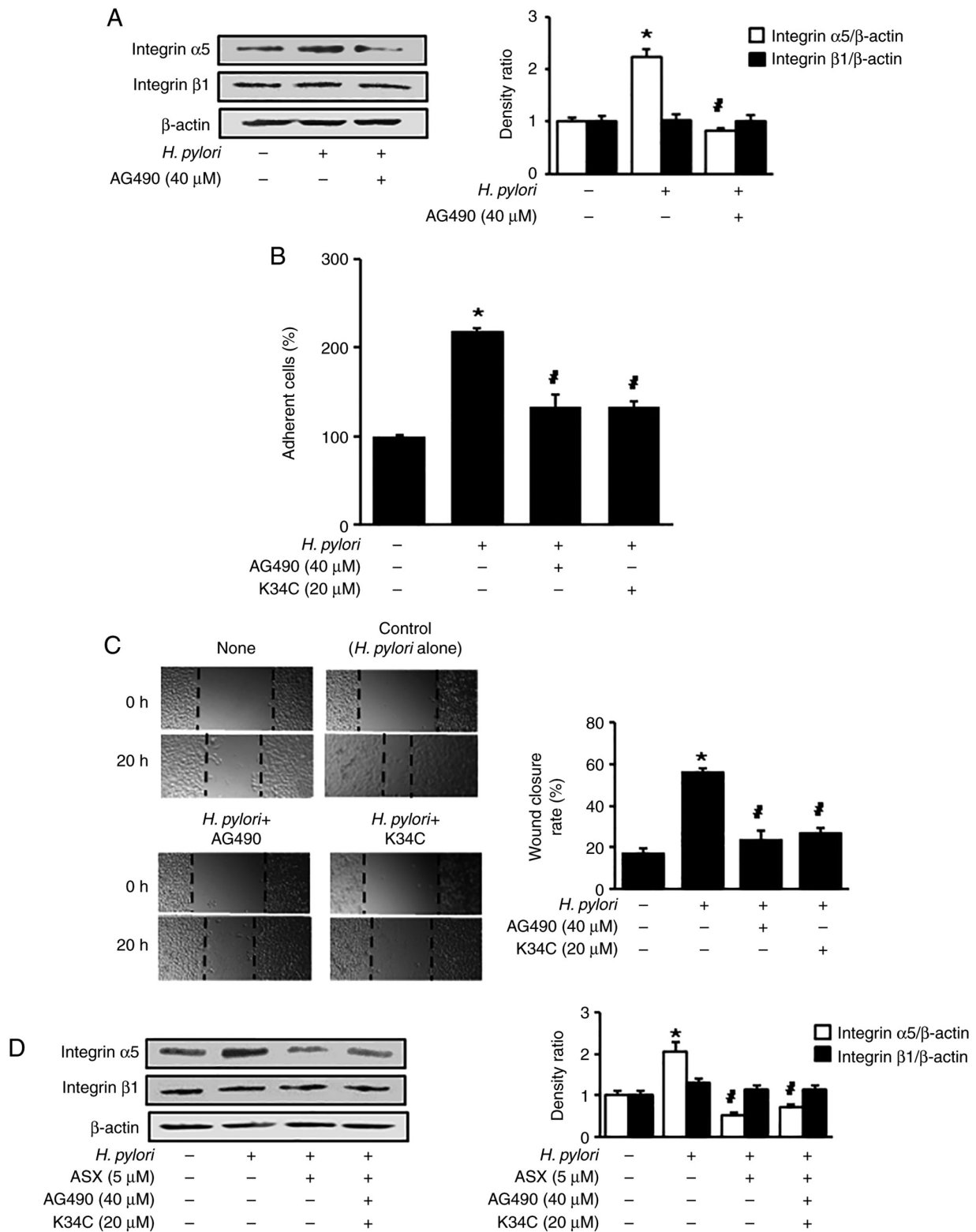


Figure 4. AG490 and K34C suppress *Helicobacter pylori*-induced integrin $\alpha 5$ expression, cell adhesion and migration. (A) Cells were pretreated with 40 μM AG490 for 2 h, and subsequently stimulated with *H. pylori* for 6 h. Protein levels of integrin $\alpha 5$ and $\beta 1$ were determined using western blot analysis, with β -actin as the loading control. (B) Cells were pretreated with 40 μM AG490 or 20 μM K34C for 2 h, and subsequently stimulated with *H. pylori* for 24 h. Adherent cells were stained and absorbance was detected at 570 nm. Results are presented as the mean \pm standard error (the total number for each group was 12). The percentage of adherent cells in the 'None' group was set as 100%. (C) Cells were pretreated with 40 μM AG490 or 20 μM K34C for 2 h, and subsequently stimulated with *H. pylori* for 20 h. The wound healing assay was performed to detect cell migration. Representative images of wounds in AGS cells were captured at baseline (0 h) and at 20 h (magnification, $\times 100$). Wound closure was evaluated by measuring the remaining cell-free area and expressed as a percentage of the initial cell-free area. The bar graph indicates wound closure rate (%). Results are presented as the mean \pm SE (the total number for each group was 12). (D) Cells were pretreated with ASX (5 μM), AG490 (40 μM) and K34C (20 μM), and then stimulated with *H. pylori* for 6 h. The pretreatment period for ASX was 3 h, while that of AG490 or K34C was 2 h. Protein levels of integrin $\alpha 5$ and $\beta 1$ were determined using western blot analysis, with β -actin as the loading control. The densitometry data are presented as the mean \pm standard error from three immunoblots, and are shown as the relative density of protein bands normalized to β -actin. * $P < 0.05$ vs. 'None' (unstimulated cells without treatment of AG490, K34C or ASX). # $P < 0.05$ vs. 'Control' (*H. pylori*-stimulated cells without treatment of AG490, K34C or ASX). ASX, astaxanthin.

is important for integrin-mediated cell adhesion in gastric epithelial cells (46). Backert *et al.* (48) found that tyrosine phosphorylation of the cag A protein occurred at 15 min and increased until 180 min in *H. pylori*-stimulated gastric epithelial cells. Tsugawa *et al.* (49) demonstrated that phosphorylated cag A was dephosphorylated by the *H. pylori* vac A, which exerted its effect by reducing intracellular glutathione and increasing ROS in gastric epithelial cells. Further studies should be performed to determine whether *H. pylori* cag A is translocated into AGS cells after 30 min of stimulation with *H. pylori*.

ROS contribute to the development of gastric cancer and ROS levels are elevated in patients with gastric cancer (50,51). *H. pylori* stimulation increases ROS levels in gastric epithelial cells (52-54), which activates the JAK1/STAT3 signaling pathway to induce cytokine IL-8 expression in gastric epithelial cells (55).

JAK/STAT signaling serves a critical role in the pathogenesis of solid tumour development (11). Furthermore, constitutively activated STAT3 increases integrin β 6 expression, which mediates tumorigenesis and enhances cell motility of prostate epithelial cells (15). JAK2-STAT5 signaling mediates the integrin-dependent migration of mesenchymal stem cells in ischemic cerebral lesions *in vivo* (56). These findings suggest a potential association among JAK/STAT, integrins and adhesion/migration in gastric cancer development (11,15,56). In the present study, integrin α 5 expression was decreased by treatment with AG490, a JAK/STAT inhibitor. These results suggest that the JAK1/STAT3 signaling pathway may regulate integrin α 5 expression. AG490 also inhibited integrin-mediated cell adhesion and migration of *H. pylori*-stimulated AGS cells. The present findings demonstrated the activation of JAK1/STAT3, as examined by detecting phosphorylation of JAK1/STAT3, in *H. pylori*-stimulated cells. Further studies are necessary to determine the translocation of STAT3 to the nucleus to induce integrin α 5 expression in *H. pylori*-stimulated AGS cells.

ASX suppressed JAK1/STAT-3 activation to inhibit invasion and angiogenesis in an oral cancer model (57). Another study reported the protective effect of ASX against breast cancer cells *in vitro* through the suppression of proliferation and migration (58). To the best of our knowledge, the novel finding of the present study is that the antioxidant effect of ASX may attenuate JAK1/STAT3 activation, integrin α 5 protein expression, cell adhesion and migration in *H. pylori*-stimulated gastric epithelial cells.

Regarding the dosage of ASX, 5 μ M ASX inhibits oxidative stress-induced cell death by reducing ROS levels and inhibiting the degradation of DNA repair protein Ku in gastric epithelial cells (59). Furthermore, 5 μ M ASX inhibits *H. pylori*-induced IL-8 expression by activating PPAR- γ and its target gene catalase in AGS cells (32). Our previous study demonstrated that 5 μ M ASX did not induce cell death, while 10 and 20 μ M ASX decreased the viable cell numbers in gastric epithelial AGS cells (60). Therefore, 1 and 5 μ M ASX were used to determine the effect of ASX on integrin expression in *H. pylori*-stimulated gastric epithelial cells in the present study.

In the present study, AGS cells were cultured with *H. pylori*. JAK1/STAT3 signaling was activated in *H. pylori*-stimulated cells. Backert *et al.* (48) and Tsugawa *et al.* (49) determined the presence of cag A or vac A in gastric epithelial cells after stimulation with *H. pylori*. Therefore, further studies should be performed to determine the presence of *H. pylori* virulence

factors in *H. pylori*-stimulated AGS cells to confirm the infection of *H. pylori* in AGS cells.

In conclusion, ASX suppressed *H. pylori*-induced cell adhesion and migration by suppressing integrin α 5 expression via the ROS-mediated JAK1/STAT3 signaling pathway in human gastric epithelial cells.

Acknowledgements

Not applicable.

Funding

The present study was supported by the BK21 FOUR project, Yonsei University, Republic of Korea.

Availability of data and materials

All data generated or analyzed during this study are included in this published article.

Authors' contributions

HK conceived and designed the experiments. JW assisted in the experimental design. JW performed the experiments. JW and JWL analyzed the data. JW and JWL confirmed the authenticity of all raw data. JW wrote the manuscript. JWL and HK reviewed and edited the manuscript. JWL designed the additional experiments for the revised manuscript. All authors have read and approved the final manuscript.

Ethics approval and consent to participate

Not applicable.

Patient consent for publication

Not applicable.

Competing interests

The authors declare that they have no competing interests.

References

1. Kusters JG, van Vliet AH and Kuipers EJ: Pathogenesis of *Helicobacter pylori* infection. Clin Microbiol Rev 19: 449-490, 2006.
2. Handa O, Naito Y and Yoshikawa T: *Helicobacter pylori*: A ROS-inducing bacterial species in the stomach. Inflamm Res 59: 997-1003, 2010.
3. Cha B, Lim JW, Kim KH and Kim H: 15-deoxy-D12,14-prostaglandin J2 suppresses RANTES expression by inhibiting NADPH oxidase activation in *Helicobacter pylori*-infected gastric epithelial cells. J Physiol Pharmacol 62: 167-174, 2011.
4. Cha B, Lim JW, Kim KH and Kim H: HSP90 β interacts with Rac1 to activate NADPH oxidase in *Helicobacter pylori*-infected gastric epithelial cells. Int J Biochem Cell Biol 42: 1455-1461, 2010.
5. Halliwell B. Reactive oxygen species in living systems: Source, biochemistry, and role in human disease. Am J Med 91: 14S-22S, 1991.
6. Snezhkina AV, Kudryavtseva AV, Kardymon OL, Savvateeva MV, Melnikova NV, Krasnov GS and Dmitriev AA: ROS generation and antioxidant defense systems in normal and malignant cells. Oxid Med Cell Longev 2019: 6175804, 2019.

7. Fiedor J and Burda K: Potential role of carotenoids as antioxidants in human health and disease. *Nutrients* 6: 466-488, 2014.
8. Sies H and Jones DP: Reactive oxygen species (ROS) as pleiotropic physiological signalling agents. *Nat Rev Mol Cell Biol* 21: 363-383, 2020.
9. Venkatabalasubramanian S: The complex interplay between JAK-STAT pathway and ROS in regulating stem cells during inflammation and cancer. In: Chakraborti S (ed) *Handbook of Oxidative Stress in Cancer: Therapeutic Aspects*. Springer, Singapore, pp1-12, 2022.
10. Charras A, Arvaniti P, Le Dantec C, Dalekos GN, Zachou K, Bordron A and Renaudineau Y: JAK inhibitors and oxidative stress control. *Front Immunol* 10: 2814, 2019.
11. Thomas SJ, Snowden JA, Zeidler MP and Danson SJ: The role of JAK/STAT signalling in the pathogenesis, prognosis and treatment of solid tumours. *Br J Cancer* 113: 365-371, 2015.
12. Pfitzner E, Kliem S, Baus D and Litterst CM: The role of STATs in inflammation and inflammatory diseases. *Curr Pharm Des* 10: 2839-2850, 2004.
13. Yu H, Kortylewski M and Pardoll D: Crosstalk between cancer and immune cells: Role of STAT3 in the tumour microenvironment. *Nat Rev Immunol* 7: 41-51, 2007.
14. Kamran MZ, Patil P and Gude RP: Role of STAT3 in cancer metastasis and translational advances. *Biomed Res Int* 2013: 421821, 2013.
15. Azare J, Leslie K, Al-Ahmadie H, Gerald W, Weinreb PH, Violette SM and Bromberg J: Constitutively activated Stat3 induces tumorigenesis and enhances cell motility of prostate epithelial cells through integrin beta 6. *Mol Cell Biol* 27: 4444-4453, 2007.
16. Park EJ, Myint PK, Ito A, Appiah MG, Darkwah S, Kawamoto E and Shimaoka M: Integrin-ligand interactions in inflammation, cancer, and metabolic disease: Insights into the multifaceted roles of an emerging ligand irisin. *Front Cell Dev Biol* 8: 588066, 2020.
17. Hou J, Yan D, Liu Y, Huang P and Cui H: The roles of integrin $\alpha 5 \beta 1$ in human cancer. *Oncotargets Ther* 13: 13329-13344, 2020.
18. Hynes RO: Integrins: Bidirectional, allosteric signaling machines. *Cell* 110: 673-687, 2002.
19. Gallant ND, Michael KE and Garcia AJ: Cell adhesion strengthening: Contributions of adhesive area, integrin binding, and focal adhesion assembly. *Mol Biol Cell* 16: 4329-4340, 2005.
20. Bendas G and Borsig L: Cancer cell adhesion and metastasis: Selectins, integrins, and the inhibitory potential of heparins. *Int J Cell Biol* 2012: 676731, 2012.
21. Yang Y, Wang Y, Che X, Hou K, Wu J, Zheng C, Cheng Y, Liu Y, Hu X and Zhang J: Integrin $\alpha 5$ promotes migration and invasion through the FAK/STAT3/AKT signaling pathway in icotinib-resistant non-small cell lung cancer cells. *Oncol Lett* 22: 556, 2021.
22. Cho SO, Kim KH, Yoon JH and Kim H: Signaling for integrin $\alpha 5 \beta 1$ expression in *Helicobacter pylori*-infected gastric epithelial AGS cells. *Ann N Y Acad Sci* 1090: 298-304, 2006.
23. Seo JH, Lim JW, Yoon JH and Kim H: Proteinase-activated receptor-2 mediates the expression of integrin $\alpha 5 \beta 1$ and $\beta 1$ in *Helicobacter pylori*-infected gastric epithelial AGS cells. *Digestion* 80: 40-49, 2009.
24. Lim JW, Kim H and Kim KH: Cell adhesion-related gene expression by *Helicobacter pylori* in gastric epithelial AGS cells. *Int J Biochem Cell Biol* 35: 1284-1296, 2003.
25. Cha B, Lim JW and Kim H: Jak1/Stat3 is an upstream signaling of NF- κ B activation in *Helicobacter pylori*-induced IL-8 production in gastric epithelial AGS cells. *Yonsei Med J* 56: 862-866, 2015.
26. Higuera-Ciajara I, Félix-Valenzuela L and Goycoolea FM: Astaxanthin: A review of its chemistry and applications. *Crit Rev Food Sci Nutr* 46: 185-196, 2006.
27. Hussein G, Sankawa U, Goto H, Matsumoto K and Watanabe H: Astaxanthin, a carotenoid with potential in human health and nutrition. *J Nat Prod* 69: 443-449, 2006.
28. Sztretye M, Dienes B, Gönczi M, Czirják T, Csernoch L, Dux L, Szentesi P and Keller-Pintér A: Astaxanthin: A potential mitochondrial-targeted antioxidant treatment in diseases and with aging. *Oxid Med Cell Longev* 2019: 3849692, 2019.
29. Faraone I, Sinisgalli C, Ostuni A, Armentano MF, Carosino M, Milella L, Russo D, Labanca F and Khan H: Astaxanthin anticancer effects are mediated through multiple molecular mechanisms: A systematic review. *Pharmacol Res* 155: 104689, 2020.
30. Chen YT, Kao CJ, Huang HY, Huang SY, Chen CY, Lin YS, Wen ZH and Wang HMD: Astaxanthin reduces MMP expressions, suppresses cancer cell migrations, and triggers apoptotic caspases of in vitro and in vivo models in melanoma. *J Funct Foods* 31: 20-31, 2017.
31. Kowshik J, Nivetha R, Ranjani S, Venkatesan P, Selvamuthukumar S, Veeravarmal V and Nagini S: Astaxanthin inhibits hallmarks of cancer by targeting the PI3K/NF- κ B/STAT3 signalling axis in oral squamous cell carcinoma models. *IUBMB Life* 71: 1595-1610, 2019.
32. Kim SH, Lim JW and Kim H: Astaxanthin inhibits mitochondrial dysfunction and interleukin-8 expression in *Helicobacter pylori*-infected gastric epithelial cells. *Nutrients* 10: 1320, 2018.
33. Kim SH, Lim JW and Kim H: Astaxanthin prevents decreases in superoxide dismutase 2 level and superoxide dismutase activity in *Helicobacter pylori*-infected gastric epithelial cells. *J Cancer Preven* 24: 54-58, 2019.
34. Martinkova E, Maglott A, Leger DA, Bonnet D, Stiborova M, Takeda K, Martin S and Dontenwill M: $\alpha 5 \beta 1$ integrin antagonists reduce chemotherapy-induced premature senescence and facilitate apoptosis in human glioblastoma cells. *Int J Cancer* 127: 1240-1248, 2010.
35. Renner G, Noulet F, Mercier MC, Choulier L, Etienne-Selloum N, Gies JP, Lehmann M, Lelong-Rebel I, Martin S and Dontenwill M: Expression/activation of $\alpha 5 \beta 1$ integrin is linked to the β -catenin signaling pathway to drive migration in glioma cells. *Oncotarget* 7: 62194-62207, 2016.
36. Diaz MI, Valdivia A, Martinez P, Palacios JL, Harris P, Novales J, Garrido E, Valderrama D, Shilling C, Kirberg A, et al: *Helicobacter pylori* vacA s1a and s1b alleles from clinical isolates from different regions of Chile show a distinct geographic distribution. *World J Gastroenterol* 11: 6366-6372, 2005.
37. Leunk RD, Johnson PT, David BC, Kraft WG and Morgan DR: Cytotoxic activity in broth-culture filtrates of *Campylobacter pylori*. *J Med Microbiol* 26: 93-99, 1988.
38. Chiozzi V, Mazzini G, Oldani A, Sciullo A, Ventura U, Romano M, Boquet P and Ricci V: Relationship between Vac A toxin and ammonia in *Helicobacter pylori*-induced apoptosis in human gastric epithelial cells. *J Physiol Pharmacol* 60: 23-30, 2009.
39. Atherton JC, Cao P, Peek RM Jr, Tummuru MK, Blaser MJ and Cover TL: Mosaicism in vacuolating cytotoxin alleles of *Helicobacter pylori*: Association of specific vacA types with cytotoxin production and peptic ulceration. *J Biol Chem* 270: 17771-17777, 1995.
40. Atherton JC, Peek RM Jr, Tham KT, Cover TL and Blaser MJ: Clinical and pathological importance of heterogeneity in vacA, the vacuolating cytotoxin gene of *Helicobacter pylori*. *Gastroenterology* 112: 92-99, 1997.
41. McClain MS, Cao P, Iwamoto H, Vinion-Dubiel AD, Szabo G, Shao Z and Cover TL: A 12-amino-acid segment, present in type s2 but not type s1 *Helicobacter pylori* VacA proteins, abolishes cytotoxin activity and alters membrane channel formation. *J Bacteriol* 183: 6499-6508, 2001.
42. Telford JL, Ghiara P, Dell'Orco M, Comanducci M, Burroni D, Bugnoli M, Tecce MF, Censini S, Covacci A, Xiang Z, et al: Gene structure of the *Helicobacter pylori* cytotoxin and evidence of its key role in gastric disease. *J Exp Med* 179: 1653-1658, 1994.
43. Seo JH, Lim JW, Kim H and Kim KH: *Helicobacter pylori* in a Korean isolate activates mitogen-activated protein kinases, AP-1, and NF- κ B and induces chemokine expression in gastric epithelial AGS cells. *Lab Invest* 84: 49-62, 2004.
44. Xerry J and Owen RJ: Conservation and microdiversity of the phospholipase A (pldA) gene of *Helicobacter pylori* infecting dyspeptics from different countries. *FEMS Immunol Med Microbiol* 32: 17-25, 2001.
45. Su B, Johansson S, Fällman M, Patarroyo M, Granström M and Normark S: Signal transduction-mediated adherence and entry of *Helicobacter pylori* into cultured cells. *Gastroenterology* 117: 595-604, 1999.
46. Miyata S, Koshikawa N, Yasumitsu H and Miyazaki K: Trypsin stimulates integrin $\alpha (5) \beta (1)$ -dependent adhesion to fibronectin and proliferation of human gastric carcinoma cells through activation of proteinase-activated receptor-2. *J Biol Chem* 275: 4592-4598, 2000.
47. Yeh YC, Cheng HC, Yang HB, Chang WL and Sheu BS: H. pylori CagL-Y58/E59 Prime Higher Integrin $\alpha 5 \beta 1$ in Adverse pH Condition to Enhance Hypochlorhydria Vicious Cycle for Gastric Carcinogenesis. *PLoS One* 8: e72735, 2013.
48. Bäckert S, Ziska E, Brinkmann V, Zimny-Arndt U, Fauconnier A, Jungblut PR, Naumann M and Meyer TF: Translocation of the *Helicobacter pylori* CagA protein in gastric epithelial cells by a type IV secretion apparatus. *Cell Microbiol* 2: 155-164, 2000.

49. Tsugawa H, Suzuki H, Saya H, Hatakeyama M, Hirayama T, Hirata K, Nagano O, Matsuzaki J and Hibi T. Reactive oxygen species-induced autophagic degradation of *Helicobacter pylori* CagA is specifically suppressed in cancer stem-like cells. *Cell Host Microbe* 12: 764-777, 2012.
50. Gu H, Huang T, Shen Y, Liu Y, Zhou F, Jin Y, Sattar H and Wei Y: Reactive oxygen species-mediated tumor microenvironment transformation: The mechanism of radioresistant gastric cancer. *Oxid Med Cell Longev* 2018: 5801209, 2018.
51. Liou GY and Storz P: Reactive oxygen species in cancer. *Free Radic Res* 44: 479-496, 2010.
52. Ding SZ, Minohara Y, Fan XJ, Wang J, Reyes VE, Patel J, Dirden-Kramer B, Boldogh I, Ernst PB and Crowe SE: *Helicobacter pylori* infection induces oxidative stress and programmed cell death in human gastric epithelial cells. *Infect Immun* 75: 4030-4039, 2007.
53. Smoot DT, Elliott TB, Verspaget HW, Jones D, Allen CR, Vernon KG, Bremner T, Kidd LCR, Kim KS, Groupman JD and Ashktorab H: Influence of *Helicobacter pylori* on reactive oxygen-induced gastric epithelial cell injury. *Carcinogenesis* 21: 2091-2095, 2000.
54. Shimoyama T, Fukuda S, Liu Q, Nakaji S, Fukuda Y and Sugawara K: Production of chemokines and reactive oxygen species by human neutrophils stimulated by *Helicobacter pylori*. *Helicobacter* 7: 170-174, 2002.
55. Choi JH, Cho SO and Kim H: α -Lipoic acid inhibits expression of IL-8 by suppressing activation of MAPK, Jak/Stat, and NF- κ B in *H. pylori*-infected gastric epithelial AGS cells. *Yonsei Med J* 57: 260-264, 2016.
56. Zhang Y, Zheng J, Zhou Z, Zhou H, Wang Y, Gong Z and Zhu J: Fractalkine promotes chemotaxis of bone marrow-derived mesenchymal stem cells towards ischemic brain lesions through Jak2 signaling and cytoskeletal reorganization. *FEBS J* 282: 891-903, 2015.
57. Kowshik J, Baba AB, Giri H, Deepak Reddy G, Dixit M and Nagini S: Astaxanthin inhibits JAK/STAT-3 signaling to abrogate cell proliferation, invasion and angiogenesis in a hamster model of oral cancer. *PLoS One* 9: e109114, 2014.
58. McCall B, McPartland CK, Moore R, Kamenetskii AF and Booth BW: Effects of astaxanthin on the proliferation and migration of breast cancer cells in vitro. *Antioxidants (Basel)* 7: 135, 2018.
59. Lee J, Lim JW and Kim H: Astaxanthin inhibits oxidative stress-induced Ku protein degradation and apoptosis in gastric epithelial cells. *Nutrients* 14: 3939, 2022.
60. Kim S, Lee H, Lim JW and Kim H: Astaxanthin induces NADPH oxidase activation and receptor-interacting protein kinase 1-mediated necroptosis in gastric cancer AGS cells. *Mol Med Rep* 24: 837, 2021.



This work is licensed under a Creative Commons Attribution-NonCommercial-NoDerivatives 4.0 International (CC BY-NC-ND 4.0) License.