

The Third French Individual and National Food Consumption (INCA3) Survey 2014–2015: method, design and participation rate in the framework of a European harmonization process

Carine Dubuisson¹, Ariane Dufour^{1,*}, Sandrine Carrillo¹, Peggy Drouillet-Pinard¹, Sabrina Havard¹ and Jean-Luc Volatier²

¹Risk Assessment Department, Methodology and Survey Unit, French Agency for Food, Environmental and Occupational Health & Safety (ANSES), 14 rue Pierre et Marie Curie, 94701 Maisons-Alfort Cedex, France:

²Risk Assessment Department, French Agency for Food, Environmental and Occupational Health & Safety (ANSES), Maisons-Alfort, France

Submitted 9 March 2018: Final revision received 31 July 2018: Accepted 20 September 2018: First published online 5 November 2018

Abstract

Objective: Assessing dietary exposure or nutrient intakes requires detailed dietary data. These data are collected in France by the cross-sectional Individual and National Studies on Food Consumption (INCA). In 2014–2015, the third survey (INCA3) was launched in the framework of the European harmonization process which introduced major methodological changes. The present paper describes the design of the INCA3 survey, its participation rate and the quality of its dietary data, and discusses the lessons learned from the methodological adaptations.

Design: Two representative samples of adults (18–79 years old) and children (0–17 years old) living in mainland France were selected following a three-stage stratified random sampling method using the national census database.

Setting: Food consumption was collected through three non-consecutive 24 h recalls (15–79 years old) or records (0–14 years old), supplemented by an FFQ. Information on food supplement use, eating habits, physical activity and sedentary behaviours, health status and sociodemographic characteristics were gathered by questionnaires. Height and body weight were measured.

Participants: In total, 4114 individuals (2121 adults, 1993 children) completed the whole protocol.

Results: Participation rate was 41.5 % for adults and 49.8 % for children. Mean energy intake was estimated as 8795 kJ/d (2102 kcal/d) in adults and 7222 kJ/d (1726 kcal/d) in children and the rate of energy intake under-reporters was 17.8 and 13.9 %, respectively.

Conclusions: Following the European guidelines, the INCA3 survey collected detailed dietary data useful for food-related and nutritional risk assessments at national and European level. The impact of the methodological changes on the participation rate should be further studied.

Keywords

Food consumption survey
European methodology harmonization
Participation rates
Dietary quality
Survey design
INCA3 survey
Energy under-reporting

The French Agency for Food, Environmental and Occupational Health & Safety (ANSES) is responsible for assessing food-related health and nutritional risks and benefits in France. Assessing dietary exposure or nutrient intakes requires detailed data on the food consumption and eating habits of individuals. For this reason, ANSES carries out the Individual and National Studies on Food Consumption (INCA surveys). Two previous surveys were carried out in 1998–1999 (INCA1)⁽¹⁾ and 2006–2007 (INCA2)⁽²⁾. The time interval between the two surveys (8 years) highlighted changes

in the dietary and nutrient intakes of the French population^(3,4). A regular update of food consumption data therefore appears essential to ensure reliable food-related risk assessments and the third INCA survey (INCA3) was conducted in 2014–2015⁽⁵⁾. Its main objective was to update the data on the foods, beverages and food supplements consumed, the nutrient intakes, the weight status, the physical activity and sedentary behaviour, the eating habits and the food purchasing, preparation and preservation practices for individuals living in mainland France.

The INCA3 survey marked a methodological turning point. It was carried out in the framework of the EU Menu Project of the European Food Safety Authority (EFSA), which is seeking to harmonize food consumption data between the Member States of the European Union. The INCA3 survey thus followed the general principles for the collection of national food consumption data drawn up by EFSA in 2009⁽⁶⁾ and updated in 2014⁽⁷⁾. The final Guidance took into account the results of two pan-European pilot studies designed to test the EU Menu methodology: (i) the Pilot study for the Assessment of Nutrient intake and food Consumption Among Kids in Europe (PANCAKE) among children aged 0–10 years old⁽⁸⁾; and (ii) the Pilot study in the view of a Pan-European dietary survey (PILOT-PANEU) among individuals aged 11–79 years old⁽⁹⁾. Regarding the INCA surveys, the dietary data collection method was changed considerably to comply with the EU Menu methodology: the seven-consecutive-day food record used in the previous INCA surveys was replaced by two or three non-consecutive 24 h recalls. This major methodological change may have affected the participation in the survey, as well as the quality of the collected dietary data.

Given this background, the present paper describes the methodology implemented in the INCA3 survey along with the participation rate and gives some insights on dietary data quality.

Methods

The French INCA3 food consumption survey is a national cross-sectional survey carried out by ANSES in mainland France between February 2014 and September 2015. Its methodology was developed in order to comply as much as possible with EFSA requirements at every stage of the protocol⁽⁷⁾.

The INCA3 survey received the ‘public interest and statistical quality’ seal of approval from France’s National Council for Statistical Information and the mandatory authorization from the French Data Protection Authority.

Sampling design

The study population includes all individuals aged from birth to 79 years old and living in mainland France. Institutionalized individuals, individuals moving out of their home within 2 months and individuals not able to be interviewed were considered ineligible.

The sampling design was developed in cooperation with the National Institute of Statistics and Economic Studies in accordance with the EFSA Guidance document⁽⁷⁾. Two independent random samples of 0- to 17-year-old children and 18- to 79-year-old adults were drawn using a three-stage cluster sampling design (geographical units, households and individuals). At the first level, 181

geographical primary sampling units were selected (Fig. 1). They fully included the thirty-seven primary sampling units containing more than 40 000 residences. The 144 remaining primary sampling units were randomly selected with probability proportional to the number of main residences, after stratification by region of residence and size of the urban area. At the second level, 25 981 households surveyed in the 2011 annual national census were randomly selected within the primary sampling units, following an allocation by region of residence and size of the primary sampling unit. Two independent household sampling frames were set up: the child (n 11 197) and the adult (n 14 784) samples. In every stratum, the households were then randomly assigned to one of the five waves of survey to ensure national representativeness at each season of the year. At the third level, an interviewer randomly selected within each household the eligible individual whose birth date (day and month) was the nearest to the recruitment date. This method was easy to perform manually during the face-to-face recruitment.

Recruitment

After receiving an information letter, the individuals were recruited by telephone or directly face-to-face. Face-to-face recruitment was chosen for the households for which a telephone number could not be found, which remained non-contactable by telephone after fifteen attempts or whose head was 65 years old or over. Recruitment required two contacts (household, then selected individual). At the household level, all eligible persons were listed to randomly select the individual to be interviewed. At the individual level, the oral consent for participation had to be obtained directly from the selected individual as well as from his/her representative for children up to 17 years old. At both levels, multiple contacts were tried (up to fifteen by telephone and four face-to-face on different days and at different times) before classifying the household/individual as ‘unresolved’. In case of refusal, the main reasons were identified. The objective was to reach 4000 participants in the survey, divided into 2000 children and 2000 adults. This sample size met the minimum EFSA requirements to estimate high percentiles in age–gender subgroups⁽⁷⁾ and proved to be sufficient for risk assessment analysis at the national level with the previous INCA2 survey.

Data collection and measurements

Data connected to food-related and nutrient risk–benefit assessment and required by the European harmonization process were collected: dietary information, physical activity and sedentary behaviour, anthropometric characteristics, health status and sociodemographic characteristics. Data related to food sufficiency and security and eating habits were also gathered to meet national-specific needs. The data were collected with questionnaires

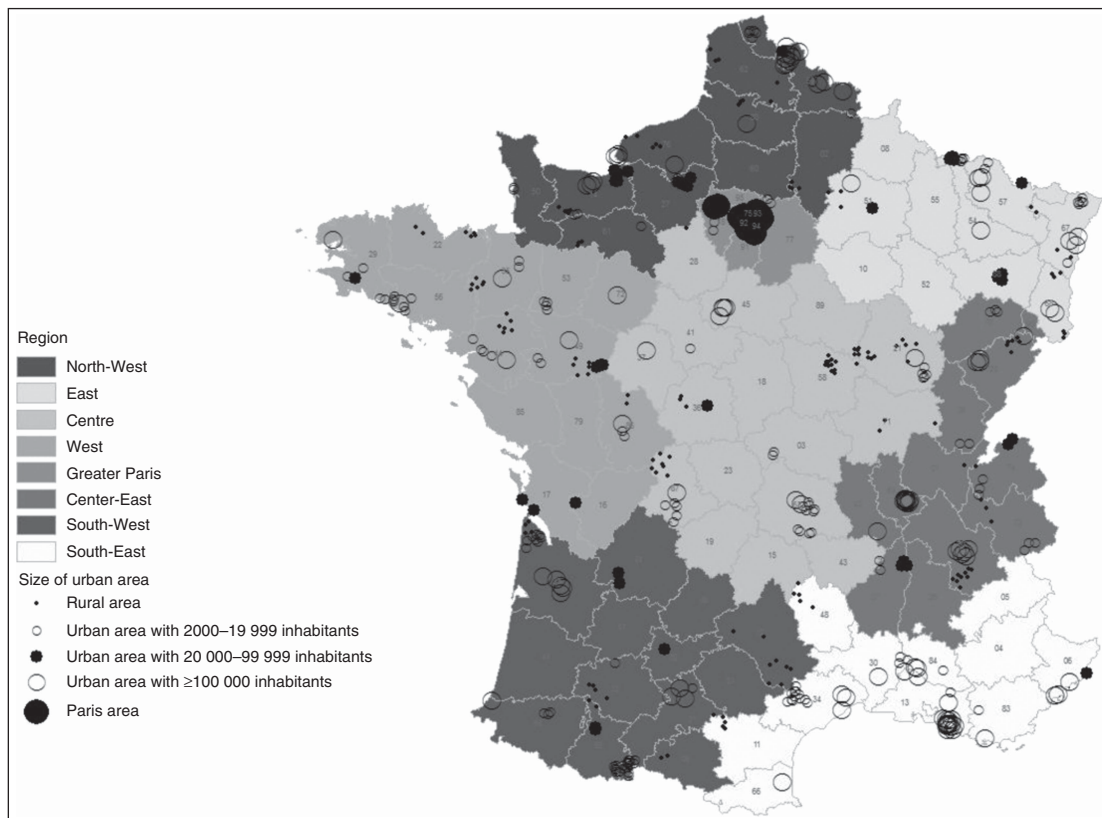


Fig. 1 Location of the 181 geographical primary sampling units of the INCA3 survey according to region and size of urban area (INCA3, Third French Individual and National Food Consumption Survey 2014–2015)

administered by interviewers, face-to-face (FAF; using a computer-assisted personal interview system) and by telephone (using a dietary software), as well as with a self-administered (SA) questionnaire available either on paper or via the Internet (using a computer-assisted web interview system). The questionnaires were completed by the individual (or his/her representative, for children aged 0–10 years). Table 1 presents a brief overview of all the data collected.

Dietary information

Dietary information was collected following the method recommended by EFSA as closely as possible. Detailed information on the consumption of foods and beverages was collected over three non-consecutive days (two weekdays and one weekend day including public holidays) spread over three weeks. The 24 h recall method was used for individuals aged 15 to 79 years old and the 24 h open-ended food record method for individuals aged 0 to 14 years old. In both methods, the dietary information was collected by a telephone interview using the standardized and computerized 24 h recall program GloboDiet (formerly EPIC-Soft) developed by the International Agency for Research on Cancer^(10–13). The GloboDiet methodology has already been proved to produce reliable dietary data for epidemiological studies⁽¹⁴⁾ and food consumption surveys^(15–18) and its use was successfully

validated in a French context during the European Food Consumption Validation (EFCOVAL) project^(19,20). An updated French-specific version of GloboDiet was prepared for the INCA3 survey.

In the French version, each 24 h food recall/record was divided into ten eating occasions including four main meals (breakfast, lunch, afternoon snack, dinner) and six between-meals snacks (before breakfast, during the morning, pre-lunch aperitif, during the afternoon, pre-dinner aperitif, during the evening/the night). In the case of 0- to 5-month-old infants, the day was divided into four periods of 6 h (morning, afternoon, evening, night). The individuals were asked to report their dietary intake by identifying all the foods and beverages consumed during the day or at night, describing them through a sequence of nineteen possible 'facets' and their descriptors (Table 2) and quantifying the consumed portion sizes. In the case of breast-fed infants, only the breast-feeding frequency was collected, as recommended by EFSA⁽⁷⁾ and tested in the PANCAKE study⁽⁸⁾. Food portion sizes were estimated using pictures of food servings and household measures (glass, cups) or drawings of food shapes and thickness, or directly expressed by weight/volume or standard units (such as commercial food portions). A picture book was specially developed for the INCA3 survey. It included a selection of photographs from the PANCAKE study and EPIC-Soft picture

Table 1 Summary of data collected in the INCA3 survey and methods of data collection

Type of data collected	Short description of data collected	Method of data collection
Food consumption	All foods and beverages consumed over the past 24 h	24 h recalls/records → Globodiet questionnaire
	Consumption frequency of about seventy-five food groups over the past one to twelve months	FFQ → Individual SA questionnaire (paper or Internet)
Food supplements	Consumer status and information on the five most frequently consumed food supplements over the past one to twelve months	FAF questionnaire
Sociodemographic background	Sociodemographic characteristics (individual and head of household) Geographical characteristics Standard of living Food insecurity	FAF questionnaire
Physical activity and sedentary behaviour	Physical activities: activities at home, at work, domestic activities	FAF questionnaire (3- to 17-year-old children)
	Sedentary behaviours: time in front of a screen, sedentary time at work, in hobbies, home transportation	Individual SA questionnaire (17- to 79-year-old adults)
Anthropometric characteristics and health status	Weight and height measurements Chronic pathologies or disabilities Smoking status Specific questions for women: pregnancy, feeding, menopause Special diets	FAF questionnaire Individual SA questionnaire (paper or Internet)
Eating habits	Eating occasions and locations	Individual SA questionnaire (paper or Internet)
	Consumption of foods grown or bred by the household or by friends or relations Consumption of organic foods Consumption of foods obtained directly from the wild Consumption of raw foods of animal origin Food-related information sources, reading of foods labels Food preparation Food storage Household treatment of drinking-water Specific questions for 0- to 35-month-old children: practices regarding preparation and storage of baby bottles, type of milk consumed	Household SA questionnaire (paper or Internet)

INCA3, Third French Individual and National Food Consumption Survey 2014–2015; FAF, administered face-to-face; SA, self-administered.

books^(21,22), supplemented by pictures of French-specific dishes taken following the protocol used for the PANCAKE picture book. It also included drawings of full-scale shapes of slices of bread, cakes, pies or pizzas commonly found in France. The perception of the new food serving pictures and drawings⁽²³⁾ was validated on 509 individuals following the protocol used for the validation of the PANCAKE pictures⁽²¹⁾ (C Dubuisson, C Moquet & P Drouillet-Pinard, unpublished results).

The food consumption data collected on the three days were supplemented by a self-reported FFQ dealing with the consumption frequency of seventy-five food groups (including alcoholic beverages) over a reference period (one month for infants aged 0–15 months, three months for toddlers aged 16–24 months, six months for toddlers aged 25–35 months and twelve months for individuals aged 3–79 years). In addition, intake of food supplements was collected using a FAF questionnaire dealing with the five most frequently consumed food supplements over the past one to twelve months depending on the age of the participant as for the FFQ. Five products were sufficient to cover the whole consumption since only 0.8 % of adults and 0.2 % of children reported having consumed more than five products during the preceding year.

Sociodemographic background

Information on the household income, wealth and food sufficiency and security, and on the occupational and education levels of the selected person (or their caregivers for children aged 0–17 years) and of the head of the household (according to the National Institute of Statistics and Economic Studies' definition⁽²⁴⁾) was gathered during the home visit. The questions related to income, occupational and education levels were derived from the French census questionnaire⁽²⁵⁾, while the questions on food security came from the US Household Food Security Survey Module six-item short form⁽²⁶⁾. Additional data on geographical characteristics and household composition were available in the sampling frame or collected during the recruitment.

Physical activity and sedentary behaviour

The physical activity and sedentary behaviour of the participant were collected using the Recent Physical Activity Questionnaire (RPAQ) for adults aged 18–79 years⁽²⁷⁾, the Youth Risk Behaviour Survey (YRBS) questionnaire for children aged 11–17 years⁽²⁸⁾ and a French-specific questionnaire for children aged 3–10 years, developed by Santé Publique France and compared with an

Table 2 Description of the facets used in the INCA3 survey to describe foods and beverages

Name of the facet	Short description	Examples of descriptors
Source (animal origin)	Animal source of the food	For milk → cow, sheep, etc.
Physical state/form as quantified	Physical state in which the food was quantified	For milk → powder, liquid, reconstituted from powder
Cooking method	Cooking method applied to the food as consumed	For potato → fried, boiled, steamed
Preservation method	Preservation method applied to the food during its storage and before consumption	For French beans → fresh, canned, frozen
Packing medium	Type of medium in which the food was preserved before consumption	For canned fruits → syrup, light syrup, fruit juice
Sugar content	Type and content of sugar in the commercial food as consumed	For soft drinks → diet, sweetened, sugar-reduced
Fat content	Fat content of the commercial food as consumed	For milk → whole, skimmed, half-skimmed, fat-reduced
Type of packaging	Material of the packaging surrounding the food before consumption	For soft drinks → glass or plastic (bottle), metal (can)
Food production	Place of production of the food	Home-made, commercial, fast food, restaurant
Brand name/product name	Brand name of the commercial food	
Skin/peel consumed	Consumption or not of the fruit or vegetable peel or of the animal-based skin	Peel consumed, peel not consumed
Visible fat consumed	Consumption or not of the visible fat of the meat or meat product	Fat consumed, fat not consumed
Type of fat used	Type of fat used as ingredient during the preparation of the complex food	For cake → butter, oil
Type of milk/liquid used	Type of liquid used as ingredient during the preparation of the complex food	For omelette → milk, cream
Salt/sodium content	Salt content of the commercial food as consumed	Not salted, salt-reduced or normally salted
Extent of cooking	Internal and external extent of cooking of the food as consumed (assessed based on pictures)	Internal cooking: For meat → very rare, rare, medium, well done External cooking: For meat → grilled a little, medium grilled, very grilled, burned
Flavoured/added component	Characteristic ingredient or flavour of the food	For yoghurt → plain, strawberry flavoured, with strawberry pieces
Food/ingredient source	Production origin of food (or main ingredients)	Self-production, fishing–hunting–gathering, commercial
Purchase section	Section of shop where the food was bought	Ambient, fresh, frozen

INCA3, Third French Individual and National Food Consumption Survey 2014–2015.

accelerometer in children aged 6–10 years old (Santé Publique France, unpublished results). No information was collected for infants and toddlers.

Anthropometric characteristics and health status

Body weight and height of the individual were measured during the home visit. For participants aged 2–79 years, weight was measured in light clothes and without shoes to the nearest 0.1 kg using an electronic scale (Beurer GS 320; max. 180 kg). Height was measured to the nearest centimetre, in a standing position without shoes, with a tape measure and a set square. For children aged 0–24 months, weight was calculated by the difference between the weight of the caregiver holding the child and the weight of the caregiver alone, and height was measured in a lying position. In case of refusal, the participant was asked to declare his/her body weight and height.

A few questions on health status of the selected person were included in the SA questionnaire to identify special diets, like food allergy or vegetarianism, as well as pregnant and breast-feeding women. Participants were also asked about their smoking habits.

Eating habits

Data on eating habits were collected using the SA questionnaire divided into two sections (individual and household). The individual section was completed by the selected person (or his/her representative for children aged 0–10 years) and dealt with habits regarding eating occasions and locations, consumption of foods grown or bred by the household (e.g. vegetable garden, chicken breeding), of foods collected in the wild (e.g. hunting, fishing, gathering), of raw foods of animal origin and of organic foods. Individual habits regarding food-related information sources and

the reading of food labels were also collected. The household section was completed by the person(s) responsible for food purchases and meal preparation in the household and gathered information on habits related to food preparation and storage, treatment of drinking-water, as well as selection criteria and usual places of food purchase. Specific questions on breast-feeding, feeding-bottle preparation and storage, and diet diversification were also asked for children aged 0 to 35 months old.

Finally, the temperature in the refrigerator was measured using a probe thermometer and use-by dates for pre-packaged fresh produces stored in the refrigerator were read during the home visit.

Study design

All seasons and days of the week were covered to account for variations in the seasonal and day-to-day food intake. After the recruitment phase, data collection started with a home visit (Fig. 2). During this home visit, the FAF questionnaire was administered, the SA questionnaire and the tools required for the dietary interviews (picture book, food record for children) were delivered and the participant was given explanations on how to use or complete them. Finally, the anthropometric measurements and the readings from the household’s refrigerator were taken. After the home visit, participants were telephoned three times to perform the dietary interviews. The three days of 24 h record for the 0- to 14-year-old children were planned

during the home visit and a reminder was issued the day before by a telephone call, whereas no appointments were made for the 24h recalls for the 15- to 79-year-old individuals. For the latter, the capture of two weekdays and one weekend day was controlled by a computerized algorithm. If the participants did not have the picture book at the moment of the call, an appointment was made later in the day to perform the interview. At the end of the third dietary interview, the completion of the SA questionnaire and the FFQ was checked.

Interviewers

The data collection was subcontracted to a professional polling organization. Its professional interviewers were chosen for the INCA3 survey based on their experience on studies with a similar protocol or topic. Although they had no specific background in nutrition, they were used to recruiting participants and to collecting information by computerized questionnaires. Two kinds of interviewers were involved: 148 ‘home-visit’ interviewers in charge of the home visits and forty-seven ‘telephone’ interviewers (working on-site at the polling organization) in charge of the administration of the dietary interview with the GloboDiet software. They were also all in charge of recruitment of participants.

To ensure data quality and reliability, all interviewers were trained. The home-visit interviewers followed a one-day training session in the recruitment of participants, the

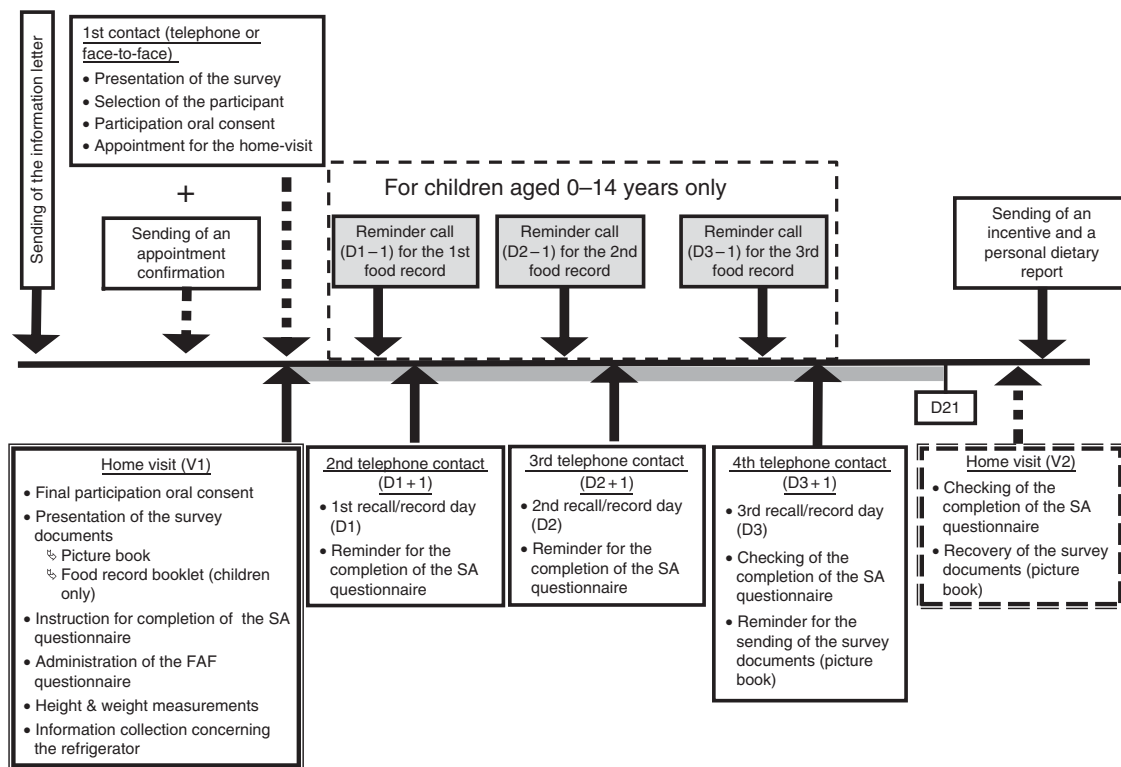


Fig. 2 Protocol of the INCA3 survey for the participants (INCA3, Third French Individual and National Food Consumption Survey 2014–2015; SA, self-administered; FAF, administered face-to-face; V1/V2, visit 1/visit 2; D1/D2/D3/D21, day 1/day 2/day 3/day 21)

survey protocol, the administration of the FAF questionnaire, the weight and height measurements, the refrigerator measurements and the explanation of the survey tools. The interviewers were given detailed written instructions and lists of arguments to help persuade individuals participate in the survey. The telephone interviewers followed a half-day training session on the recruitment of participants and a three-day session on the collection of dietary information using the GloboDiet software. The latter was specifically adapted to their background. It focused on the information to collect and mixed half theoretical explanations and half practical exercises following step by step the GloboDiet questionnaire. By the end of the training session, the interviewers were able to perform a complete interview. For the fieldwork, a questionnaire was established for the 'quick list' step of the interview (quick listing of all foods and beverages consumed over the ten different occasions). This questionnaire included useful reminders on consumption occasions or foods usually forgotten when reporting dietary intake and the interviewers were asked to strictly follow it. Questions for the description and quantification steps were also labelled and included in the GloboDiet software and provided useful reminders of the information to collect. After the training session, dietary interviews were monitored to check that they were being administered correctly. Interviewers were notified of any improvable points. During all the fieldwork, two dietitians were also available on-site throughout the interview sessions to help the interviewers in coding good information when necessary.

Throughout the fieldwork period, both the home-visit and telephone interviewers' work was followed up daily

regarding several performance indicators: recruitment rate, interview duration and dietary information accuracy. When problems were raised, corrective actions were implemented. However, because no improvement was noticed, eight 'home-visit' interviewers and two 'telephone' interviewers were excluded.

Data analysis

Participation rates

Three levels of participation were defined to keep the largest number of participants in each part of the survey: (i) SURVEY participation corresponded to participation in the home visit only; (ii) SA participation corresponded to participation in the home visit and completion of both individual (including FFQ) and household sections of the self-administered questionnaire; and (iii) DIET participation corresponded to participation in the home visit, completion of the individual section (including FFQ) of the SA questionnaire and completion of at least two dietary interviews (Fig. 3). Household (HH) participation was also defined for the household contact level: it was validated by the selection of the individual to be interviewed.

The participation rates were calculated following the EFSA recommendations, based on the definitions provided by the European Health Examination Survey⁽²⁹⁾:

1. Participation rate 1 (PR1) = (number of participants) / (number of eligible AND unresolved individuals/households);
2. Participation rate 2 (PR2) = (number of participants) / (number of eligible individuals/households).

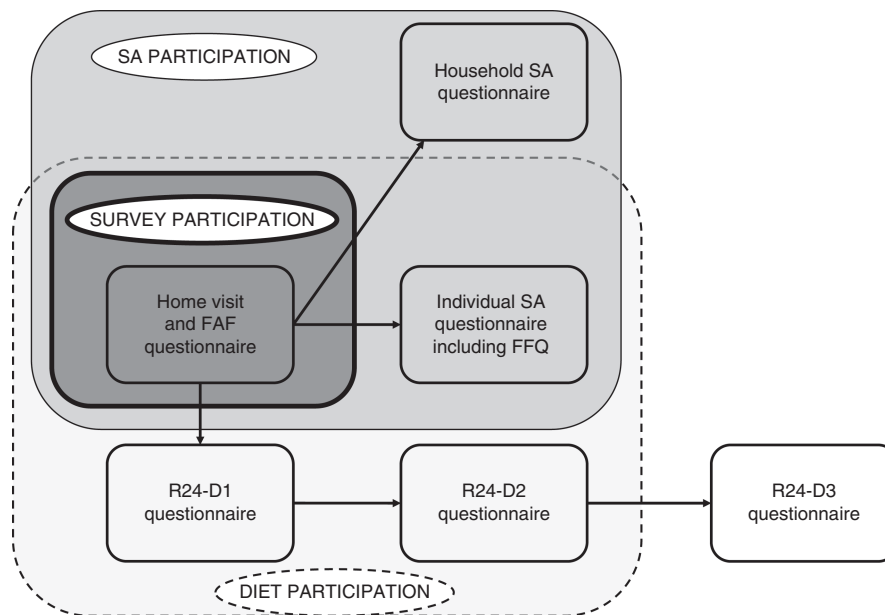


Fig. 3 Three different levels of participation defined in the INCA3 study (INCA3, Third French Individual and National Food Consumption Survey 2014–2015; SA, self-administered; FAF, administered face-to-face; R24; 24 h recall/record; D1/D2/D3, day 1/ day 2/day 3)

Weighting

The individual weighting factors were estimated to ensure the national representativeness of the final samples. The method consisted of a non-response correction followed by a margin calibration applied successively at the household and individual levels. The non-response correction intended to reduce the sampling bias by correcting the initial probability of inclusion⁽³⁰⁾. The probability of inclusion was modelled by a logistic regression which included explicative variables available in the sample frame (region of residence, size of urban area, size of housing, number of rooms, professional category of the head of household, size of household and occupancy status of household) or coming from the study field (method of recruitment). The margin calibration aims at reducing the sampling variance by calibrating the distribution of several characteristics observed in the survey sample on national reference data⁽³¹⁾. The calibration was applied on region of residence, size of urban area, professional category of the head of household and size of household, gender, age, education level and season of interview. The reference margins were derived from the 2014 national continuous employment survey except for season (25 % per season). To correct the over-representation of weekend days, an additional weighting factor was applied for the DIET sample, accounting for the type of day. Weighting factors were calculated for each level of participation (SURVEY, SA, DIET and HH). Thanks to this process, the final samples were representative for the variables used for the calibration at the national level. Both final individual weighting factors and the sampling design effect were taken into account for appropriate individual data analysis.

Assessment of food and nutritional intakes

As required by EFSA for harmonization purposes, all foods and beverages recorded in the survey, as well as their descriptors, were recoded according to the EFSA food classification system (FoodEx2)⁽³²⁾.

In addition, to assess nutrient intakes, all the dietary data were linked to a survey-specific food composition table derived from the database on the nutritional composition of foods from the French Information Centre on Food Quality (CIQUAL) updated in 2016⁽³³⁾. Each CIQUAL food item was associated with a composition in fifty-four nutrients including energy, macronutrients, eleven minerals, thirteen vitamins and fourteen fatty acids.

Assessment of physical activity levels

The physical activity level (PAL) was assessed differently by age class, taking the WHO recommendations into account. For the 3- to 10-year-old children, frequencies of playing outdoors, physical education at school and physical education outside school and means of transport to go to school were used to classify them into low PAL (2 d/week or less with physical activity (PA) and passive

transport), high PAL (5 d/week or more with PA and active transport) or moderate PAL (other situations). For the 11- to 17-year-old adolescents, low PAL was attributed to those practising moderate or intense PA fewer than 5 times/week and intense PA fewer than 3 times/week; high PAL to those practising moderate or intense PA daily or intense PA at least 5 times/week; and moderate PAL to the other situations. For the 18- to 79-year-old adults, the relevant RPAQ activities were classified according to their metabolic equivalents of task (MET) into moderate (3 to 5.99 MET) or intense (6 or more MET) PA. Then, high PAL was defined as at least 3 d with intense PA reaching 1500 MET-min/week, or at least moderate or intense PA daily reaching 3000 MET-min/week. Moderate PAL was defined as at least 3 d/week with intense PA during an average 25 min/d, or at least 5 d/week with intense PA during an average 30 min/d, or at least 5 d with moderate or intense PA reaching 600 MET-min/week. Low PAL corresponded to other situations.

Dietary data quality indicator

The main features of the dietary interviews were assessed using two indicators published by the International Agency for Research on Cancer⁽¹⁰⁾ (interview duration and number of foods per interview), completed by the mean energy intake per interview. At the individual level, the dietary data quality was assessed through three indicators calculated by age–gender subgroup: (i) mean energy intake (EI); (ii) mean reported EI:BMR; and (iii) prevalence of energy misreporters. BMR was estimated from the Henry equations taking into account age, gender, height and weight information⁽³⁴⁾. Misreporters were identified at the individual level using the method recommended by EFSA⁽³⁵⁾ consisting of the Goldberg cut-off method⁽³⁶⁾, updated by Black⁽³⁷⁾. It is based on the comparison of EI:BMR according to cut-off values depending on the individual's PAL (low, moderate or high as defined above). Dietary energy misreporting was estimated for the DIET participant samples, after exclusion of the children under 1 year old and breast-fed children (n 62).

All analyses were computed using the statistical software package on STATA/MP version 14.2. The `svyset` function was used to account for the complex INCA3 sampling frame design. A P value of 0.05 was used as the threshold of significance.

Results

Participation rates

At the household level, the HH participation rates PR1 and PR2 were respectively 48.1 and 57.9 % for the child sample (Fig. 4) and 41.4 and 52.1 % for the adult sample (Fig. 5). The child sample showed a greater rate of ineligible households (24.2 *v.* 14.4 % for adult sample) but a lower rate of unresolved households (12.9 *v.* 17.6 %). Among the

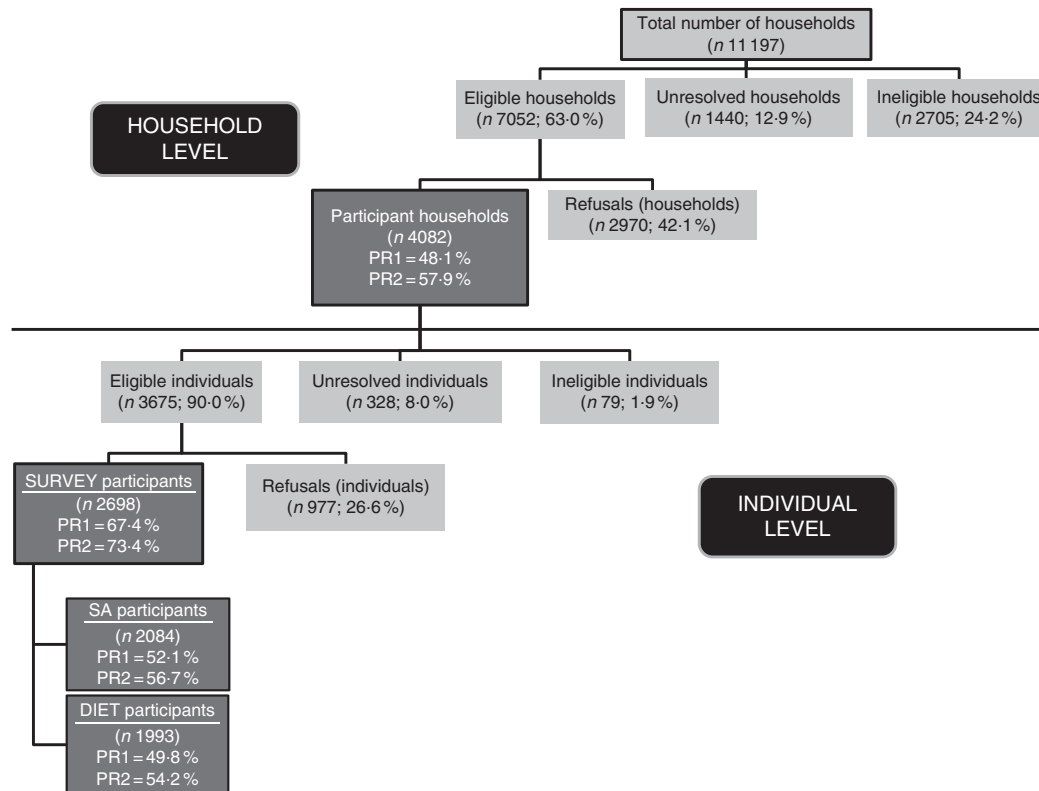


Fig. 4 Description of the participation for the child sample in the INCA3 study (INCA3, Third French Individual and National Food Consumption Survey 2014–2015; SA, self-administered; PR1 (participation rate 1) = number of participants/(number of eligible AND unresolved individuals or households); PR2 (participation rate 2) = number of participants/number of eligible individuals or households)

eligible and contacted households, 42.1 % for the child sample and 47.9 % for the adult sample refused to list the household's eligible individuals preventing a participant from being selected.

At the individual level, a total of 5855 individuals (2698 children and 3157 adults) completed the home visit (SURVEY participation), 4372 (2084 children and 2288 adults) also completed the SA questionnaire (SA participation) and 4114 (1993 children and 2121 adults) validated the third level of participation (DIET) reaching the expected sample size (Figs 4 and 5). However, almost one-quarter of children and one-third of adults dropped out during the protocol. Finally, the DIET participation rates PR1 and PR2 were respectively 49.8 and 54.2 % among children and 41.5 and 44.9 % among adults. Among the eligible and contacted individuals, 26.6 % for the child sample and 33.2 % for the adult sample refused to participate.

Overall, the main reasons for ineligibility were the quality of the addresses themselves (destroyed/imprecise or uninhabited/secondary residence; 7 to 8 % of the household sampling frame), age range non-compliance (1.5 % of the household sampling frame for adults and 12.4 % for children), non-French speaking (2 %) or long-term unavailability of the selected person (1 to 1.4 %). The

main reasons for refusal were 'not interested' (49 % at the household level and 34 % at the individual level) and 'no time or not available' (respectively 16 and 33 %), as well as the refusal of the home visit (12 %) at the individual level.

Description of the participants

The unweighted breakdown of the SURVEY, SA and DIET participants according to age, gender, education level and size of the household compared with national reference data is presented in Table 3 for the child sample and in Table 4 for the adult sample.

Child sample

For the child sample, the gender breakdown of the final survey sample was similar to the national reference data. But this was not the case for the other characteristics. Children aged 0–3 years were under-represented and adolescents aged 11–17 years were over-represented. This age distribution distortion remained the same irrespective of the participation level (SURVEY, SA or DIET). The children whose household head held at least the French high-school leaving certificate (Baccalauréat) were over-represented, this trend becoming more marked with the participation level. Inversely, children whose household

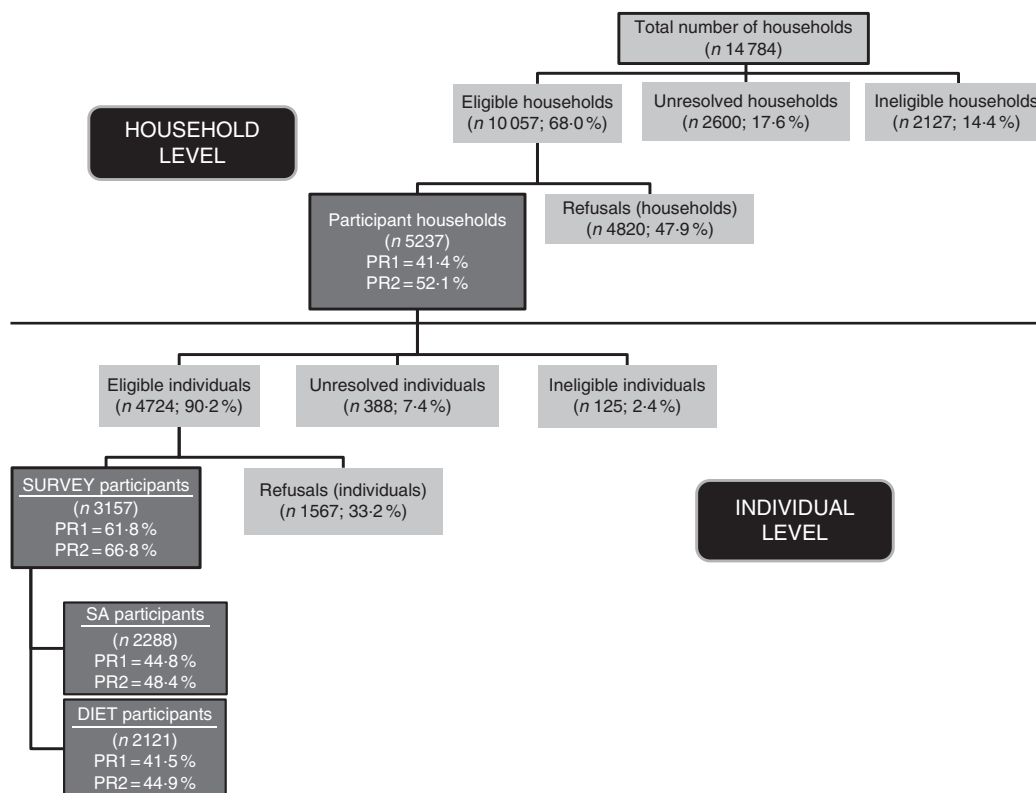


Fig. 5 Description of the participation for the adult sample in the INCA3 study (INCA3, Third French Individual and National Food Consumption Survey 2014–2015; SA, self-administered; PR1 (participation rate 1) = number of participants/(number of eligible AND unresolved individuals or households); PR2 (participation rate 2) = number of participants/number of eligible individuals or households)

Table 3 Raw breakdown (%) of the SURVEY, SA and DIET participants in the INCA3 survey for the child sample according to socio-demographic characteristics, compared with national population statistics

	SURVEY participants (n 2698)	SA participants (n 2084)	DIET participants (n 1993)	National population† (n 13 863 076)
Gender				
Boys	52.1	51.1	51.2	51.1
Girls	47.9	48.9	48.8	48.8
Age				
0–3 years old	11.4	11.0	10.9	20.9
4–6 years old	16.8	17.2	17.3	17.4
7–10 years old	23.9	24.9	24.1	22.6
11–14 years old	27.3	26.5	27.3	22.7
15–17 years old	20.6	20.4	20.4	16.3
Level of education of the head of household				
No diploma or primary school diploma	9.9	7.5	7.3	16.7
Lower secondary school diploma	30.8	29.5	28.7	32.3
High-school leaving certificate to 2 years of higher education	39.1	41.1	41.6	32.2
3 or more years of higher education	20.2	21.9	22.4	18.8
Household size				
2 persons	5.4	4.6	4.5	4.8
3 persons	24.8	24.7	23.9	20.8
4 persons	43.9	45.4	46.2	40.7
5 persons and over	25.9	25.3	25.4	33.7

SA, self-administered; INCA3, Third French Individual and National Food Consumption Survey 2014–2015.

†National continuous employment survey (EEC 2014) carried out by the National Institute of Statistics and Economic Studies.

head was unqualified were more and more under-represented according the participation level. Finally, children from large families (five persons or more) were

constantly under-represented irrespective of the level of participation, as opposed to the children from families of three or four persons.

Table 4 Raw breakdown (%) of the SURVEY, SA and DIET participants in the INCA3 survey for the adult sample according to socio-demographic characteristics, compared with national population statistics

	SURVEY participants (n 3157)	SA participants (n 2288)	DIET participants (n 2121)	National population† (n 45 382 917)
Gender				
Men	43.6	42.3	41.8	48.5
Women	56.4	57.7	58.2	51.5
Age				
18–44 years old	41.0	37.3	36.9	46.0
45–64 years old	36.0	38.7	39.0	36.4
65–79 years old	23.0	24.0	24.1	17.6
Level of education of the participant				
No diploma or primary school diploma	15.2	12.8	11.9	20.6
Lower secondary school diploma	29.3	28.4	27.3	30.7
High-school leaving certificate to 2 years of higher education	38.6	39.8	40.6	32.1
3 or more years of higher education	16.9	19.0	20.2	16.6
Household size				
1 person	27.3	27.1	27.5	17.7
2 persons	38.0	39.4	39.8	35.0
3 persons	14.5	14.2	14.0	18.7
4 persons	14.0	14.5	14.1	18.3
5 persons and over	6.1	4.8	4.6	10.3

SA, self-administered; INCA3, Third French Individual and National Food Consumption Survey 2014–2015.

†National continuous employment survey (EEC 2014) carried out by the National Institute of Statistics and Economic Studies.

Adult sample

For the adult sample, differences with regard to the national population were observed for each characteristic and mostly increased with the participation level. Regardless of the participation level, women were over-represented. Young adults (18–44 years old) were under-represented, mainly among the SA and DIET participants, whereas the elderly (65–79 years old) and to a lesser extent the middle-aged adults were over-represented in the same categories of participants. As observed for the child sample, individuals with at least the French high-school leaving certificate were over-represented and unqualified individuals under-represented. Finally, a large over-representation of single adults and a slight over-representation of adults from two-person households were constantly observed irrespective of the participation level, when compared with other adults.

The distortions observed in the final samples proved the need for the weighting process to reduce sampling bias. The weighted breakdown was thus in line with the national breakdown.

Dietary data quality

The main characteristics of the 12 210 dietary interviews are presented in the Table 5. Only few deviations from the protocol were observed. Almost 97 % of the participants completed the three dietary telephone interviews and about 99 % of the children and 97 % of the adults respected the two weekdays and one weekend day repartition. It took on average 22 d and 36 d to collect the three dietary interviews in the child and adult samples,

respectively, which was more than expected for the adult sample. The dietary interviews were well distributed over the seven days of the week in the child sample (between 12 and 17 % according to the day) but more fluctuant in the adult sample (only 7.7 % for Fridays and 20.0 % for Sundays). Adults reported on average more foods by interview (twenty-four foods) than children (eighteen foods), corresponding to a mean energy intake of respectively 8648 kJ (2067 kcal) and 7376 kJ (1763 kcal) per interview. Only in the child sample was a small decrease in mean energy intake observed between the first and the third interview (–335 kJ (–80 kcal); $P < 0.01$).

Regarding the DIET participants, the mean individual energy intake was assessed at 7222 kJ/d (1726 kcal/d) for children (Table 6) and 8795 kJ/d (2102 kcal/d) for adults (Table 7). It was associated with age and gender in both samples: energy intake being lower in women, young children and elderly. Mean EI:BMR was 1.56 for children and 1.40 for adults and was linked to age in children and to gender in adults (up to 65 years old). Finally, 13.9 % of the children and 17.8 % of the adults were identified as under-reporters, while respectively 2.2 and 2.6 % were identified as over-reporters. The proportion of under-reporters was associated with age in children (regardless of gender), increasing from 1.5 % for children aged 4–6 years to 40.4 % for adolescents aged 15–17 years. Under-reporting was not associated with age or gender in adults. Among the age-gender subgroups, one (15- to 17-year-old girls) appeared to be particularly biased for reported energy intake (with mean EI:BMR = 1.13 and rate of under-reporters = 47 %).

Table 5 Description of the dietary interviews in the INCA3 survey according to the sample (row data)

	Children		Adults	
	(n 1993)		(n 2121)	
Information at individual level				
Only two R24, %		2.6		3.8
Only weekdays, %		1.2		2.6
Only weekend days, %		0.3		0.4
Number of days between first and last R24, mean and sd		21.7		36.3
Information at day level	(n 5927)		(n 6283)	
Interview duration (min), mean and sd	30.8	11.9	39.4	16.6
Number of reported foods/d, mean and sd				
Day 1	18.8	5.3	24.3	7.5
Day 2	18.0	5.6	23.7	7.3
Day 3	17.4	5.5	23.3	7.5
Total	18.0	5.5	23.8	7.5
Individual energy intake (kcal)†, mean and sd				
Day 1	1805	726	2092	875
Day 2	1757	693	2067	880
Day 3	1724	707	2039	847
Total	1763	709	2067	868
Day repartition, %				
Monday		14.9		14.3
Tuesday		14.7		18.8
Wednesday		11.9		11.2
Thursday		13.7		14.8
Friday		11.4		7.7
Saturday		17.1		13.2
Sunday		16.3		20.0
Season repartition, %				
Winter		33.4		25.6
Spring		29.9		36.0
Summer		19.5		22.6
Autumn		17.2		15.8

INCA3, Third French Individual and National Food Consumption Survey 2014–2015; R24, 24 h recall/record.

†To convert to kJ, multiply kcal values by 4.184.

Table 6 Energy intake (mean and sd), EI:BMR (mean and 95 % CI) and prevalence of under-reporters (% and 95 % CI) among 1- to 17-year-old children (n 1934) in the INCA3 survey according to age and gender

	Boys (n 984)			Girls (n 950)			All (n 1934)			Test‡
	Mean or %	sd or 95% CI		Mean or %	sd or 95% CI		Mean or %	sd or 95% CI		
Energy intake (kcal/d)‡, mean and sd										
1–3 years old	n 159	1229	174	1168	245		1199	211		NS
4–6 years old	n 345	1582	371	1465	318		1525	351		*
7–10 years old	n 481	1928	403	1728	432		1830	430		***
11–14 years old	n 543	2078	584	1991	870		2036	746		NS
15–17 years old	n 406	2187	781	1580	576		1888	772		***
All	n 1934	1823	582	1624	606		1726	602		***
Test§			***			***			***	
EI:BMR, mean and 95% CI										
1–3 years old	n 159	1.65	1.55, 1.75	1.69	1.58, 1.80		1.67	1.59, 1.75		NS
4–6 years old	n 345	1.69	1.58, 1.80	1.67	1.60, 1.73		1.58	1.63, 1.72		NS
7–10 years old	n 481	1.70	1.63, 1.77	1.62	1.54, 1.70		1.66	1.63, 1.72		NS
11–14 years old	n 543	1.46	1.41, 1.52	1.58	1.33, 1.83		1.52	1.39, 1.65		NS
15–17 years old	n 406	1.26	1.17, 1.35	1.13	1.06, 1.20		1.20	1.14, 1.25		*
All	n 1934	1.55	1.51, 1.59	1.57	1.49, 1.64		1.56	1.52, 1.60		NS
Test§			***			***			***	
Prevalence of under-reporters, % and 95% CI										
1–3 years old	n 159	0.0	–	0.0	–		0.0	–		–
4–6 years old	n 345	2.6	0.9, 6.7	0.4	0.1, 2.0		1.5	0.6, 3.7		*
7–10 years old	n 481	1.0	0.2, 4.5	8.7	4.9, 15.1		4.8	2.6, 8.7		***
11–14 years old	n 543	23.4	16.6, 32.1	23.2	15.1, 34.0		23.3	17.5, 30.3		NS
15–17 years old	n 406	34.0	25.4, 43.9	47.0	37.7, 56.5		40.4	33.9, 47.4		NS
All	n 1934	12.0	9.7, 14.8	15.8	12.5, 19.9		13.9	11.8, 16.3		NS
Test§			***			***			***	

EI, energy intake; INCA3, Third French Individual and National Food Consumption Survey 2014–2015.

‡Test by gender: *P < 0.05, **P < 0.01, ***P < 0.001.

†To convert to kJ, multiply kcal values by 4.184.

§Test by age: *P < 0.05, **P < 0.01, ***P < 0.001.

Table 7 Energy intake (mean and SD), EI:BMR (mean and 95% CI) and prevalence of under-reporters (% and 95% CI) among 18- to 79-year-old adults (*n* 2121) in the INCA3 survey according to age and gender

	Men (<i>n</i> 887)			Women (<i>n</i> 1234)			All (<i>n</i> 2121)			Test†
	Mean or	%	SD or 95% CI	Mean or	%	SD or 95% CI	Mean or	%	SD or 95% CI	
Energy intake (kcal/d)‡, mean and SD										
18–44 years old	<i>n</i> 783	2530	690	1860	576	2190	718	***		***
45–64 years old	<i>n</i> 827	2435	705	1763	623	2089	760	***		***
65–79 years old	<i>n</i> 511	2185	810	1656	652	1900	799	***		***
All	<i>n</i> 2121	2438	737	1787	617	2102	765	***		***
Test§			**		**			***		
EI:BMR, mean and 95% CI										
18–44 years old	<i>n</i> 783	1.50	1.41, 1.60	1.37	1.27, 1.46	1.44	1.38, 1.50	*		*
45–64 years old	<i>n</i> 827	1.43	1.37, 1.50	1.32	1.24, 1.39	1.38	1.32, 1.43	*		*
65–79 years old	<i>n</i> 511	1.37	1.27, 1.46	1.33	1.26, 1.41	1.35	1.29, 1.41	NS		NS
All	<i>n</i> 2121	1.45	1.40, 1.51	1.34	1.30, 1.39	1.40	1.36, 1.43	**		**
Test§			NS		NS		NS			
Prevalence of under-reporters, % and 95% CI										
18–44 years old	<i>n</i> 783	14.3	10.2, 19.7	19.8	14.5, 26.5	17.1	13.8, 20.9	NS		NS
45–64 years old	<i>n</i> 827	15.7	11.4, 21.2	20.9	15.1, 28.4	18.4	14.3, 23.3	NS		NS
65–79 years old	<i>n</i> 511	18.2	11.6, 27.3	19.4	13.1, 27.9	18.9	14.0, 24.9	NS		NS
All	<i>n</i> 2121	15.4	12.8, 18.5	20.2	16.3, 24.6	17.8	15.3, 20.6	NS		NS
Test§			NS		NS		NS			

EI, energy intake; INCA3, Third French Individual and National Food Consumption Survey 2014–2015.

†Test by gender: **P* < 0.05, ***P* < 0.01, ****P* < 0.001.

‡To convert to kJ, multiply kcal values by 4.184.

§Test by age: **P* < 0.05, ***P* < 0.01, ****P* < 0.001.

Discussion

The INCA3 survey provides an update of the French database on dietary and nutrient intakes, eating habits regarding food safety issues, and physical activity and sedentary behaviour based on a representative sample of individuals aged 0–79 years.

Participation rates

At the individual level, the SURVEY participation rate PR1 was 67% for children and 62% for adults. This rate decreased to 50% for children and 42% for adults for the DIET level. In the previous INCA2 survey, the participation rates were 75% for children and 70% for adults for the SURVEY level and respectively 70 and 64% for the DIET level. Thus, the participation declined by 8 points for the SURVEY level and by almost 20 points for the DIET level between the two surveys. The trend in decrease for the SURVEY participation was similar to those observed in health surveys in Europe (estimated at 1 to 1.5 points per year) and may be linked to an overall tendency for lower participation of the European population in surveys^(38,39). However, the decrease was much more marked for the DIET level, raising the question of the impact of the new protocol on response rate. Indeed, the four contacts necessary to complete the whole protocol for the INCA3 survey left more opportunities of dropping out (about –20 points between SURVEY and DIET participation rates) than the two home visits required in the INCA2 survey (–6 points). A negative impact of the multiple-contacts protocol on participation rates has already been observed

in health surveys, with a significant decrease of 40 points from the beginning to the end of the protocol⁽³⁸⁾. In the INCA3 survey, the dropouts were mainly divided into refusals (51% in adults and 43% in children) and loss to follow-up (33% in adults and 25% in children). The completion of dietary interviews without appointment for adults may explain the higher rate of loss to follow-up. They were more difficult to join, as illustrated by the greater number of days needed to perform the three dietary interviews.

The participation rate remains a crucial issue, since high participation rates limit the risk of sampling bias in the results and conclusions derived from the survey⁽⁴⁰⁾. Therefore, many measures were taken in the INCA3 survey to reach as high a participation rate as possible. First, awareness of the survey was boosted locally and nationally by a media campaign and an information letter sent to the town hall of each geographical primary sampling unit. Second, the number of unresolved or dropout cases was limited by switching from telephone to FAF recruitment when the household/individual remained non-contactable and by reminder emails sent to the participants after a period without any contact. These emails proved to be very efficient for increasing the participation rate, as already observed⁽⁴¹⁾. Despite all these actions, the rate of DIET participation remained below the initial expectations (60%) and distortions regarding sociodemographic characteristics compared with the national population reference data were observed. The non-response determinants in the INCA3 survey were in accordance with those already known for dietary or health surveys: gender (in adults), age, size of household and socio-economic

characteristics^(40–43). Studies on health surveys have underlined that the non-respondents usually behave differently, and mainly in an unhealthier way, from the respondents, leading to underestimating the rate of unhealthy behaviours in the population^(40,41,44,45). For the INCA3 survey, no information was available to assess whether the non-respondents eat differently from the respondents, since no information on their dietary habits was collected. On the contrary, we can assume that the eligibility criteria for the survey did not impact the reliability of the survey to assess dietary exposure for the national population aged 0–79 years. Indeed, the high rate of ineligibility was mainly explained by the quality of the addresses from the sampling frame rather than by a strong selection bias in the population.

Dietary data quality

The quality of the dietary data collected in the INCA3 survey was assessed through several indicators.

Regarding the characteristics of the dietary interviews, the average number of foods reported per day by adults in our study (twenty-four) was in the high range of those reported in PILOT-PANEU (from sixteen in Bulgaria to twenty-five in Finland)⁽¹⁰⁾. Regarding a global indicator like energy intake misreporting, the proportion of over-reporters was negligible (fewer than 100 individuals among the 4114 DIET participants) while under-reporting was more prevalent but remained under 20 % in both the child (14 %) and adult (18 %) samples. In children, an inverse association with age was observed with a maximum of 40 % of under-reporters among adolescents aged 15–17 years which is consistent with findings from other studies⁽⁴⁶⁾. The high rate of under-reporter adolescents should be taken into account for food-related risk assessment, by comparing the dietary exposure assessed while keeping or excluding the under-reporters before deriving conclusions. More generally, the percentages of under-reporters identified in the INCA3 survey are in the lower range of what is usually observed for dietary studies, proving the quality of the collected dietary data. Indeed, the percentage of under-reporters in studies using the 24 h recall method ranged from 22 to 31 % in adults⁽⁴⁷⁾ and from 16 to 57 % among children aged 8–18 years⁽⁴⁶⁾. In particular, using the same method for dietary information collection and identification of misreporters, under-reporters in PILOT-PANEU accounted for 31 % in 11- to 14-year-old children, 40 % in 15- to 17-year-old adolescents and 31 % in 18- to 69-year-old adults⁽⁹⁾ against respectively 23, 40 and 18 % (for 18- to 79-year-old adults) in the INCA3 survey. Similarly, the under-reporters were higher in the national Belgian dietary survey carried out with GloboDiet in the same period (2014): 5 % in 3- to 9-year-old children, 36 % in 10- to 17-year-old adolescents and 31 % in 18- to 64-year-old adults⁽⁴⁸⁾. This demonstrates that the administration

of GloboDiet dietary interviews by professional interviewers rather than dietitians ensured the collection of reliable dietary data. Nevertheless, it required some adaptations of the GloboDiet protocol. Regarding the software updating, the terms used for the food identification and description were labelled to be as understandable as possible for both interviewers and interviewees and common brand names were added as synonyms in the food list. Regarding the training, its content and organization were specially designed to meet the interviewers' skills and help them learn how to use GloboDiet and collect the right information. The additional questionnaires developed for the quick list, the description and quantification steps were very useful for interviewers with no background in nutrition and ensured standardization of the dietary data collected between interviewers and interviewees.

Even though EFSA recommends at least one face-to-face interview, we chose to perform all the INCA3 dietary interviews by telephone in order to supervise the dietary interviewers on-site and limit the interviewer training cost. Our choice should not have impacted the data quality since telephone interviews proved to be as efficient as face-to-face interviews for collecting dietary data with GloboDiet⁽⁴⁹⁾.

Strengths and limitations of the harmonization process for the INCA3 survey

The INCA3 survey was designed to comply as much as possible with the EFSA Guidance. Compared with the previous INCA surveys, the major changes concerned the inclusion of infants and toddlers, the change of the dietary data collection method (from a self-administered food record to telephone-administered 24 h recalls/records) and the interview protocol.

Moving from one methodology to another had a cost. First, the new methodology was more time-consuming, particularly regarding the use of the GloboDiet software. Indeed, it took time to revise seventy unrelated .txt files of the software, considering that nearly all of them interacted with each other, but also to check and clean the collected data (with regard to their complexity) and to code them according to the FoodEx2 classification. Afterwards, GloboDiet was considered user-friendly by our interviewers and proved to be appropriate to collect very detailed dietary data in a nutrient intake or risk assessment perspective and in a harmonized way. Second, the new methodology increased the fieldwork costs. Actually, the costs of the interviewers' training and worktime were higher with the EFSA methodology since the dietary recalls/records were administered whereas the previous INCA food record was self-administered. Third, as previously described, the new protocol doubled the number of contacts required to complete the whole protocol which may have had a negative impact on response rate. This led to extending the fieldwork duration (from 12 to 19 months) in order to

recruit the expected number of individuals. Finally, from a national public health point of view, the dietary and nutrient intakes collected in the INCA3 survey are no longer comparable with the results of the previous INCA surveys. Thus, it is not possible to monitor the changes in the dietary and nutrient intakes of the French population using the three INCA surveys.

On the other hand, by taking part in the harmonization process, the INCA3 survey provides dietary data for the French population that are standardized and more easily comparable with data from the other European countries involved in the EU Menu Project. This will allow food safety and nutrient intakes in France to be compared with those of other European countries and possibly identify specific risks for the French population. Moreover, the very detailed description of the dietary intake required by EFSA will enable more refined food-related health and nutritional risk assessments at the national level too. The methodological changes also seemed to improve the collection of the dietary intake. The rate of under-reporters was 3 points lower and total energy intake from out-of-home dietary intake 6 points higher (up from 3 to 9 %) in the INCA3 survey than in the INCA2 survey. These improvements can be partly explained by the standardized questionnaires implemented for the quick list, description and quantification steps of the GloboDiet interview. The administration of standardized questionnaires also helped to collect data with a more homogeneous quality between participants and enabled to better capture the precise description of the food eaten than the previous self-administered food record. In addition, the limitation of the number of surveyed days (three instead of seven) avoided the fatigue effect observed with the 7 d food record⁽⁵⁰⁾. No difference was shown in the energy intake between the interviews according to their order.

Conclusions

The French national dietary survey (INCA3) updated the national data on dietary intake of the French population in a harmonized way with European practice. This harmonization process implied major adaptations of the previous methodology of the INCA survey according to the EFSA Guidance, particularly with regard to collecting the dietary information. Many challenges during the survey preparation or the fieldwork were faced and overcome successfully.

The new survey tools proved to be efficient for collecting very detailed and reliable data on dietary intake that will be very useful for food-hazard and nutrient risk assessment as well as for underpinning nutrition and food policies, at both national and European levels.

Acknowledgements

Acknowledgements: The authors would like to thank the GfK team (interviewers, dietitians and supervisors) for the collection of the data and all families for their cooperation. They also want to thank the scientific experts involved in the survey scientific committee and working group for their help for the design of the survey. *Financial support:* The INCA3 survey was supported by EFSA (contract number CT/EFSA/DCM/2011/02/02) and Santé Publique France (contract number G639A); by grants from the Ministries for Health and Agriculture; and by ANSES. *Conflict of interest:* The authors declare that there are no conflicts of interest. *Authorship:* C.D. designed the study, analysed and interpreted the data, and wrote the manuscript. A.D. contributed to the study design, data collection and analysis, and assisted in writing the paper. S.C., P.D.-P., S.H. and J.-L.V. contributed to the study design, data collection and analyses. All the authors reviewed the manuscript. *Ethics of human subject participation:* This study was conducted according to the guidelines laid down in the Declaration of Helsinki and all procedures involving human subjects were approved by the Comité Consultatif sur le Traitement de l'Information en matière de Recherche dans le domaine de la Santé (CCTIRS; Advisory Committee on Information Processing in Health Research). Verbal informed consent was obtained from all subjects. Verbal consent was witnessed and formally recorded.

References

1. Volatier J-L (2000) *Enquête INCA individuelle et nationale sur les consommations alimentaires*. Paris: Tec & Doc.
2. Agence française de sécurité sanitaire de l'alimentation (2009) *Etude individuelle nationale des consommations alimentaires (INCA 2) (2006–2007)*. Report no. 978-2-11-097789-2. Maisons-Alfort: AFSSA.
3. Dubuisson C, Lioret S, Touvier M *et al.* (2010) Trends in food and nutritional intakes of French adults from 1999 to 2007: results from the INCA surveys. *Br J Nutr* **103**, 1035–1048.
4. Lioret S, Dubuisson C, Dufour A *et al.* (2010) Trends in food intake in French children from 1999 to 2007: results from the INCA (étude Individuelle Nationale des Consommations Alimentaires) dietary surveys. *Br J Nutr* **103**, 585–601.
5. Agence nationale de sécurité sanitaire de l'alimentation de l'environnement et du travail (2017) *Etude individuelle nationale des consommations alimentaires 3 (INCA 3)*. Report no. 979-10-286-0170. Maisons-Alfort: ANSES.
6. European Food Safety Authority (2009) General principles for the collection of national food consumption data in the view of a pan-European dietary survey. *EFSA J* **7**, 1435.
7. European Food Safety Authority (2014) Guidance on the EU Menu methodology. *EFSA J* **12**, 3944.
8. Ocké M, de Boer E, Brants H *et al.* (2012) *PANCAKE – Pilot study for the Assessment of Nutrient intake and food Consumption Among Kids in Europe*. Report no. EN-339. Parma: EFSA.

9. Ambrus A, Horvath Z, Farkas Z *et al.* (2013) *Pilot Study in the View of a Pan-European Dietary Survey – Adolescents, Adults and Elderly. Report* no. EN-508. Parma: EFSA.
10. International Agency for Research on Cancer (2013) *Food Consumption Data Collection Methodology for the EU Menu Survey (EMP-PANEU) Final Report. EFSA Supporting Publication* no. 2013:EN-485. Parma: EFSA.
11. Slimani N, Casagrande C, Nicolas G *et al.* (2011) The standardized computerized 24-h dietary recall method EPIC-Soft adapted for pan-European dietary monitoring. *Eur J Clin Nutr* **65**, Suppl. 1, S5–S15.
12. Slimani N, Deharvend G, Charrondiere RU *et al.* (1999) Structure of the standardized computerized 24-h diet recall interview used as reference method in the 22 centers participating in the EPIC project. European Prospective Investigation into Cancer and Nutrition. *Comput Methods Programs Biomed* **58**, 251–266.
13. Voss S, Charrondiere UR, Slimani N *et al.* (1998) EPIC-SOFT a European computer program for 24-hour dietary protocols. *Z Ernahrungswiss* **37**, 227–233.
14. Slimani N, Bingham S, Runswick S *et al.* (2003) Group level validation of protein intakes estimated by 24-hour diet recall and dietary questionnaires against 24-hour urinary nitrogen in the European Prospective Investigation into Cancer and Nutrition (EPIC) calibration study. *Cancer Epidemiol Biomarkers Prev* **12**, 784–795.
15. Cypers K, Lebacqz T & Bel S (2015) Introduction et méthodologie. In *Enquête de consommation alimentaire 2014–2015 rapport 1*, pp. 1–35 [T Lebacqz and E Teppers, editors]. Brussels: Scientific Institute of Public Health (Wiv-ISP).
16. Gose M, Krems C, Heuer T *et al.* (2016) Trends in food consumption and nutrient intake in Germany between 2006 and 2012: results of the German National Nutrition Monitoring (NEMONIT). *Br J Nutr* **115**, 1498–1507.
17. Huybrechts I, Casagrande C, Nicolas G *et al.* (2011) Inventory of experiences from national/regional dietary monitoring surveys using EPIC-Soft. *Eur J Clin Nutr* **65**, Suppl. 1, S16–S28.
18. Crispim SP, Nicolas G, Casagrande C *et al.* (2014) Quality assurance of the international computerized 24 h dietary recall method (EPIC-Soft). *Br J Nutr* **111**, 506–515.
19. Crispim SP, de Vries JH, Geelen A *et al.* (2011) Two non-consecutive 24 h recalls using EPIC-Soft software are sufficiently valid for comparing protein and potassium intake between five European centres-results from the European Food Consumption Validation (EFCOVAL) study. *Br J Nutr* **105**, 447–458.
20. Crispim SP, Geelen A, Souverein OW *et al.* (2011) Biomarker-based evaluation of two 24-h recalls for comparing usual fish, fruit and vegetable intakes across European centers in the EFCOVAL Study. *Eur J Clin Nutr* **65**, Suppl. 1, S38–S47.
21. Trolle E, Vandevijvere S, Ruprich J *et al.* (2013) Validation of a food quantification picture book targeting children of 0–10 years of age for pan-European and national dietary surveys. *Br J Nutr* **110**, 2298–2308.
22. Van Kappel A, Amoyel J, Slimani N *et al.* (1995) *EPIC-Soft Picture Book for Estimating Food Portion Sizes*. Lyon: IARC.
23. Nelson M & Haraldsdottir J (1998) Food photographs: practical guidelines I. Design and analysis of studies to validate portion size estimates. *Public Health Nutr* **1**, 219–230.
24. Institut national de la statistique et des études économiques (2016) *Personne de référence de la famille*. <https://www.insee.fr/fr/metadonnees/definition/c1707> (accessed July 2018).
25. Institut national de la statistique et des études économiques (2017) *Recensement de la population – Bulletin individuel*. <http://www.le-recensement-et-moi.fr/rpetmoi/pdf/Bulletin-individuel.pdf> (accessed July 2018).
26. US Department of Agriculture (2012) Six-Item Short Form of the Food Security Survey Module. <https://www.ers.usda.gov/topics/food-nutrition-assistance/food-security-in-the-us/survey-tools/#six> (accessed July 2018).
27. Golubic R, May AM, Benjaminsen Borch K *et al.* (2014) Validity of electronically administered Recent Physical Activity Questionnaire (RPAQ) in ten European countries. *PLoS One* **9**, e92829.
28. Troped PJ, Wiecha JL, Fragala MS *et al.* (2007) Reliability and validity of YRBS physical activity items among middle school students. *Med Sci Sports Exerc* **39**, 416–425.
29. Tolonen H (2013) *EHES Manual. Part A. Planning and Preparation of the Survey*. Helsinki: National Institute for Health and Welfare.
30. Caron N (1996) *Les principales techniques de correction de la non-réponse et les modèles associés. Document de travail* no. 9604. Paris: INSEE.
31. Deville J-C & Särndal C-E (1992) Calibration estimators in survey sampling. *J Am Stat Assoc* **87**, 376–382.
32. European Food Safety Authority (2015) *The Food Classification and Description System FoodEx2 (Revision 2)*. EFSA Supporting Publication no. 2015:EN-804. Parma: EFSA.
33. Agence nationale de sécurité sanitaire de l'alimentation de l'environnement et du travail (2016) *Ciqual: Table de composition nutritionnelle des aliments*. <https://ciqual.anses.fr/> (accessed July 2018).
34. Henry CJ (2005) Basal metabolic rate studies in humans: measurement and development of new equations. *Public Health Nutr* **8**, 1133–1152.
35. EFSA Panel on Dietetic Products Nutrition and Allergies (2013) Scientific Opinion on Dietary Reference Values for energy. *EFSA J* **11**, 3005.
36. Goldberg GR, Black AE, Jebb SA *et al.* (1991) Critical evaluation of energy intake data using fundamental principles of energy physiology: 1. Derivation of cut-off limits to identify under-reporting. *Eur J Clin Nutr* **45**, 569–581.
37. Black AE, Goldberg GR, Jebb SA *et al.* (1991) Critical evaluation of energy intake data using fundamental principles of energy physiology: 2. Evaluating the results of published surveys. *Eur J Clin Nutr* **45**, 583–599.
38. Mindell JS, Giampaoli S, Goesswald A *et al.* (2015) Sample selection, recruitment and participation rates in health examination surveys in Europe – experience from seven national surveys. *BMC Med Res Methodol* **15**, 78.
39. Tolonen H, Helakorpi S, Talala K *et al.* (2006) 25-Year trends and socio-demographic differences in response rates: Finnish adult health behaviour survey. *Eur J Epidemiol* **21**, 409–415.
40. Volken T (2013) Second-stage non-response in the Swiss health survey: determinants and bias in outcomes. *BMC Public Health* **13**, 167.
41. Christensen AI, Ekholm O, Glumer C *et al.* (2014) Effect of survey mode on response patterns: comparison of face-to-face and self-administered modes in health surveys. *Eur J Public Health* **24**, 327–332.
42. Demarest S, Van der Heyden J, Charafeddine R *et al.* (2013) Socio-economic differences in participation of households in a Belgian national health survey. *Eur J Public Health* **23**, 981–985.
43. Martikainen P, Laaksonen M, Piha K *et al.* (2007) Does survey non-response bias the association between occupational social class and health? *Scand J Public Health* **35**, 212–215.
44. Tolonen H, Dobson A, Kulathinal S *et al.* (2005) Effect on trend estimates of the difference between survey respondents and non-respondents: results from 27 populations in the WHO MONICA Project. *Eur J Epidemiol* **20**, 887–898.

45. Tolonen H, Laatikainen T, Helakorpi S *et al.* (2010) Marital status, educational level and household income explain part of the excess mortality of survey non-respondents. *Eur J Epidemiol* **25**, 69–76.
46. Forrestal SG (2011) Energy intake misreporting among children and adolescents: a literature review. *Matern Child Nutr* **7**, 112–127.
47. Poslusna K, Ruprich J, de Vries JH *et al.* (2009) Misreporting of energy and micronutrient intake estimated by food records and 24 hour recalls, control and adjustment methods in practice. *Br J Nutr* **101**, Suppl. 2, S73–S85.
48. De Ridder K (2016) Energie. In *Enquête de consommation alimentaire 2014–2015 rapport 4*, pp. 469–514 [S Bel and J Tafforeau, editors]. Brussels: Scientific Institute of Public Health (WiV-ISP).
49. Brustad M, Skeie G, Braaten T *et al.* (2003) Comparison of telephone vs face-to-face interviews in the assessment of dietary intake by the 24 h recall EPIC SOFT program – the Norwegian calibration study. *Eur J Clin Nutr* **57**, 107–113.
50. Dufour A, Dubuisson C, Volatier J-L *et al.* (2012) Influence of duration of recording period on food and energy intake in the French adult population. Presented at *8th International Conference on Diet and Activity Methods*, Rome, Italy, 14–17 May 2012.