

Effects of the COVID-19 pandemic on secondary care for cardiovascular disease in the UK: an electronic health record analysis across three countries

F. Lucy Wright¹, Kate Cheema², Raph Goldacre¹, Nick Hall¹, Naomi Herz², Nazrul Islam¹, Zainab Karim², David Moreno-Martos³, Daniel R Morales^{3,4}, Daniel O'Connell², Enti Spata¹, Ashley Akbari ⁵, Mark Ashworth⁶, Mark Barber⁷, Norman Briffa⁸, Dexter Canoy⁹, Spiros Denaxas ^{10,11}, Kamlesh Khunti¹², Amanj Kurdi ¹³, Mamas Mamas ¹⁴, Rouven Priedon¹¹, Cathie Sudlow¹¹, Eva JA Morris¹, Ben Lacey¹ and Amitava Banerjee ^{10,15,*}, on behalf of the CVD-COVID-UK Consortium

¹The Big Data Institute, Nuffield Department of Population Health, University of Oxford, Oxford OX3 7LF, UK; ²British Heart Foundation, London NW1 7AW, UK; ³Division of Population Health and Genomics, University of Dundee, Dundee DD1 4HN, UK; ⁴Department of Public Health, University of Southern Denmark, Odense DK-5000, Denmark; ⁵Population Data Science, Swansea University Medical School, Faculty of Medicine, Health & Life Science, Swansea University, Wales, Swansea, SA2 8QA, UK; ⁶Primary Care Research Group, King's College London, London SE1 1UL, UK; ⁷Scottish Stroke Care Audit, Public Health Scotland, Glasgow G2 6QE, UK; ⁸Department of Cardiothoracic Surgery, Sheffield Teaching Hospitals NHS Foundation Trust, Sheffield S10 2JF, UK; ⁹Population Health Sciences Institute, University of Newcastle, Newcastle NE2 4AX, UK; ¹⁰Institute of Health Informatics, University College London, London NW1 2DA, UK; ¹¹British Heart Foundation Data Science Centre, Health Data Research UK, London NW1 2BE, UK; ¹²Leicester Diabetes Centre, University of Leicester, Leicester LE5 4PW, UK; ¹³Strathclyde Institute of Pharmacy and Biomedical Science, University of Strathclyde, Glasgow G4 0RE, UK; ¹⁴Keele Cardiovascular Research Group, Keele University, Stoke on Trent ST5 5BG, UK; and ¹⁵Department of Cardiology, Barts Health NHS Trust, London E1 1BB, UK

Received 4 November 2022; revised 9 November 2022; accepted 14 November 2022; online publish-ahead-of-print 16 November 2022

Background

Although morbidity and mortality from COVID-19 have been widely reported, the indirect effects of the pandemic beyond 2020 on other major diseases and health service activity have not been well described.

Methods and results

Analyses used national administrative electronic hospital records in England, Scotland, and Wales for 2016–21. Admissions and procedures during the pandemic (2020–21) related to six major cardiovascular conditions [acute coronary syndrome (ACS), heart failure (HF), stroke/transient ischaemic attack (TIA), peripheral arterial disease (PAD), aortic aneurysm (AA), and venous thromboembolism (VTE)] were compared with the annual average in the pre-pandemic period (2016–19). Differences were assessed by time period and urgency of care.

In 2020, there were 31 064 (–6%) fewer hospital admissions [14 506 (–4%) fewer emergencies, 16 560 (–23%) fewer elective admissions] compared with 2016–19 for the six major cardiovascular diseases (CVDs) combined. The proportional reduction in admissions was similar in all three countries. Overall, hospital admissions returned to pre-pandemic levels in 2021. Elective admissions remained substantially below expected levels for almost all conditions in all three countries [–10 996 (–15%) fewer admissions]. However, these reductions were offset by higher than expected total emergency admissions [+25 878 (+6%) higher admissions], notably for HF and stroke in England, and for VTE in all three countries. Analyses for procedures showed similar temporal variations to admissions.

Conclusion

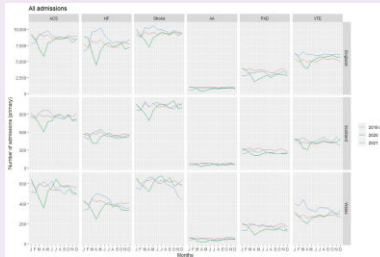
The present study highlights increasing emergency cardiovascular admissions during the pandemic, in the context of a substantial and sustained reduction in elective admissions and procedures. This is likely to increase further the demands on cardiovascular services over the coming years.

* Corresponding author: Tel: +02035495449, Fax: +02076798002, Email: ami.banerjee@ucl.ac.uk

Graphical Abstract

Monthly total admissions for CVD as primary diagnosis across subtypes, across three countries in the UK and across pre-pandemic (2016–2019) and pandemic (2020–2021) periods.

Key question: What is the impact in 2020 and 2021 of the COVID-19 pandemic on hospital admissions and procedures for six major CVDs in England, Scotland, and Wales?



Keywords

Key finding: In 2020, there were 6% fewer hospital admissions (emergency: –4%, elective: –23%) compared with 2016–19 for six major CVDs, across three UK countries. Overall, admissions returned to pre-pandemic levels in 2021, but elective admissions remained below expected levels.

Take-home message: There were increasing emergency cardiovascular admissions during the pandemic, with substantial and sustained reduction in elective admissions and procedures. This is likely to increase further the demands on cardiovascular services over the coming years.

COVID-19?’, which could inform risk prediction models and CVD prevention priorities during pandemics. Second, ‘How has clinical activity varied across subtypes¹⁴, admissions and procedures during the pandemic?’, to understand impact of changing pandemic waves and policy landscapes, including vaccinations and lockdowns. Third, ‘Are CVD admissions and procedures affected more for elective or emergency activity?’, to inform service planning and resource utilisation during and post-COVID-19. In the [CVD-COVID-UK/COVID-IMPACT consortium](#), national electronic health record (EHR) data are available for pandemic-related research.^{15,16}

Introduction

Since the early stages of the coronavirus (COVID-19) pandemic, acute workload on health systems managing those with the virus has led to direct effects (e.g. hospitalisations, intensive care admissions, and mortality of infected individuals).^{1–3} In addition, indirect effects have impacted non-COVID diseases by health system strain and changes in behaviours, documented across some individual specialties, clinical procedures, and countries but only in the first year of the pandemic.^{4–7}

The role of non-communicable diseases (NCDs) and their care as a COVID-related risk factor and outcome is consistent with a ‘syndemic’—‘characterised by biological and social interactions between conditions and states, interactions that increase a person’s susceptibility to harm or worsen health outcomes.’⁸ However, pandemic planning and preparedness excludes modelling of indirect effects, which have not been of this scale in prior public health emergencies. Moreover, pandemic monitoring has focused on metrics of infection, excluding NCDs as a risk factor or indirect outcome.⁹

Cardiovascular disease (CVD) is the greatest burden of disease in UK and globally.¹⁰ Any attempt to quantify indirect effects or NCDs must consider CVD. Even in the early first wave, there were indirect effects across six CVD subtypes in nine UK hospitals with reduced admissions, emergency department attendances and procedures after lockdown (23 March 2020) by 58, 53, 31, and –88% respectively, compared with prior years.² Several studies confirmed indirect effects in different CVD subtypes and countries.^{7,11–13} However, over 2 years into the pandemic with increasing non-COVID care backlogs in the UK and other countries, three questions remain. First, ‘was the risk profile of individuals with CVD different before and during

Objectives

Using EHR phenotypes for CVD and associated procedures,¹⁴ the indirect impact of the COVID pandemic on CVD can be studied with access to data for 65.7 million individuals across multiple sources with > 700 validated phenotyping algorithms. For six major CVD subtypes [acute coronary syndrome (ACS), heart failure (HF), stroke/transient ischaemic attack (TIA), peripheral arterial disease (PAD), aortic aneurysm (AA), and venous thromboembolism (VTE)] in three UK countries (England, Scotland, and Wales), we investigated hospital activity before (2016–19) and during the COVID-19 pandemic (2020–21) by: (i) demographic characteristics; (ii) admissions and procedures; and (iii) urgency of care.

Methods

Setting and data sources

National administrative hospital records for England, Scotland, and Wales were used for this study and data sources are shown in supplementary material online, *Figure S1*. Data were accessed through each country’s trusted research environment (TRE), which was made possible through agreements with Health Data Research UK for the British Heart Foundation Data Science Centre’s CVD-COVID-UK/COVID-IMPACT research programme.^{15,16} For England, data were obtained from the Admitted Patient Care Hospital Episode Statistics in NHS Digital’s TRE service for England. For Scotland, the Scottish Morbidity Records (SMR 01) for General/Acute Inpatient and Day Case admission in the Scottish National Safe Haven was the data source¹⁷ and for Wales, it was the Patient Episode Database Wales in the Secure Anonymised Information Linkage (SAIL) Databank.¹⁸ These datasets cover inpatient admissions to all NHS hospitals including day cases.

Data extraction and analysis of patient-level hospital data was undertaken in each nation's TRE using common data specifications and analysis codes, accounting for differences in data structure and clinical coding procedures between the three nations. In the raw form, each record represents a new admission, a change between medical specialists within the same admission or an inter-hospital transfer. To minimise over-counting, a record that represented a continuous hospital stay and included changes between medical specialists within the same admission and accounted for inter-hospital transfers was created. Only aggregated data were shared.

Study population

The study population included all individuals admitted to hospital in England, Scotland, or Wales with a primary diagnosis of each CVD subtype between 1 January, 2016 and 31 December, 2021- the study period covers 4 years before the COVID-19 pandemic for comparison with the first 2 years of the pandemic. The study population also included all individuals admitted for each of the associated CVD procedures to ensure that all procedures were captured, since the associated CVD subtype diagnosis might not necessarily be recorded as the primary diagnosis for these admissions.

Admissions for cardiovascular diseases diagnoses and procedures

Included CVD diagnoses were ACS, HF, stroke/TIA, PAD, AA, and VTE. Associated CVD procedures were percutaneous coronary intervention, coronary artery bypass graft surgery, pacemaker/cardiac resynchronisation therapy, ventricular assist device/heart transplant, stroke thrombolysis/thrombectomy, carotid endarterectomy/stenting, cerebral aneurysm coiling, AA repair, peripheral limb angioplasty, limb revascularisation, bypass/amputation, and pulmonary artery embolectomy/embolectomy.

Phenotypes for CVD diagnoses were defined using the international classification of diseases, 10th revision (ICD-10 codes) and procedures using office of population censuses and surveys classification of interventions and procedures, version 4 (OPCS-4 codes). These were chosen to align with an earlier study² and a few minor modifications were made to OPCS-4 codes after clinical and academic expert consensus (e.g. additional codes for coronary artery bypass surgery or pacemaker insertion). For procedures, we counted all recorded procedures in a single admission. Details of diagnostic and procedural clinical terminology codes are in supplementary material online, *Table S1*.

Admissions, not individuals, were counted. One patient may have been readmitted for a CVD subtype or procedure, or had an admission for other CVD subtypes or procedures during the study period, and each admission was counted. Admissions were classified as emergency or elective using the admission type variable in each dataset. Generally, emergency admissions were, when the admission was unpredictable and at short notice due to clinical need, such as referrals from accident and emergency, a general practitioner, or a clinic. Admissions were classified as elective when the decision to admit could be separated from the time of the actual admission such as being admitted from a waiting list, or having the admission booked or planned at the time when it was deemed clinically necessary.

Statistical analysis

Analyses were for men and women combined and for all ages. Demographic characteristics of individuals admitted to hospital pre-pandemic and those admitted during the first 2 years of the pandemic for CVD subtypes and procedures were investigated. The characteristics were for each admission and included sex, age, and ethnic group, and Charlson comorbidity index using ICD-10 codes from the admission.¹⁹ The average number of people in each category of the selected demographic characteristic was divided by the average number of admissions. Due to small

numbers (<5) in some categories, characteristics for 2020 and 2021 were reported as an average of the 2 years. For all other analyses, 2020 and 2021 are reported separately. The average of 2016–19 was selected as the comparator for all analyses, using a four-year period to give stability over time.

Initially all admissions (emergency and elective combined) were assessed. To explore indirect effects of the pandemic on unplanned and planned CVD care and inform policy responses, admissions were reported separately as emergency or elective, respectively. Annual counts were calculated within the three time periods of interest: pre-pandemic 2016–19, and pandemic 2020 and 2021. The percentage change between time periods was calculated by subtracting the total for each pandemic year from the 2016–19 average and dividing by the 2016–19 average. Percentage changes were calculated with 95% confidence intervals, assuming pre-pandemic annual counts followed a negative binomial distribution. Monthly counts of admissions were also calculated and plotted to show trends during the years. The analyses were performed according to a pre-specified protocol and analysis plan with phenotyping and analysis code, which is available at https://github.com/BHFDSC/CCU003_04.

Results

Study population

We identified a total of 1 973 104 and 970 374 admissions and 16 16 550 and 635 187 procedures in 2016–19 and 2020–21 respectively.

Demographic characteristics

There were no major differences by age, gender, or ethnic group between 2016–19 and 2020–21 for admissions (Supplementary material online, *Table S2*) or procedures (Supplementary material online, *Table S3*) across countries, or CVD subtypes. The Charlson comorbidity profile was more severe in 2020–21, compared to 2016–19, for all admissions and all procedures in England, except ventricular assist device/transplant and PA embolectomy. In Scotland, individuals with PAD (20.4 vs. 17.9%) and VTE (18.8 vs. 17.9%) had more severe comorbidities in 2020–21, compared with pre-pandemic, but otherwise, in Scotland and Wales, there were no notable differences by comorbidities in admissions or procedures between pre- and post-pandemic periods.

Hospital admissions

Total admissions

In 2020, there were 31 064 (-6%) fewer admissions for all six CVD subtypes combined in the three countries overall, compared with the expected 2016–19 numbers. In 2021, there was an overall increase of 14 884 (+3%) admissions. Figure 1 shows annual counts and percentage change in total admissions for CVD as the primary diagnosis for all CVD and across subtypes for each country. In 2020, admissions for all CVD in the three individual countries were lower than expected (-6% in England, -6% in Scotland, and -7% in Wales). In 2021, admissions in England were 4% higher than expected, but in Scotland and Wales, numbers were similar to 2016–19.

For most CVD subtypes, admissions in 2020 were lower than expected across countries compared with 2016–19 (Figure 1). Admissions for ACS, AA, and PAD were lower in all three countries (annual % change range: -6 to -27%), and for HF in Wales (-13%). For stroke/TIA in England, admission numbers were somewhat lower (-3%). For the remaining CVD subtypes, the observed numbers of admissions in 2020 were similar to those in 2016–19. In 2021 in all three countries, admissions for AA and PAD continued to remain lower than expected (range: -10% AA in Scotland to -19% AA in Wales) and there were more admissions for VTE than expected (range: +11% in Scotland to +27% in Wales). In England, there

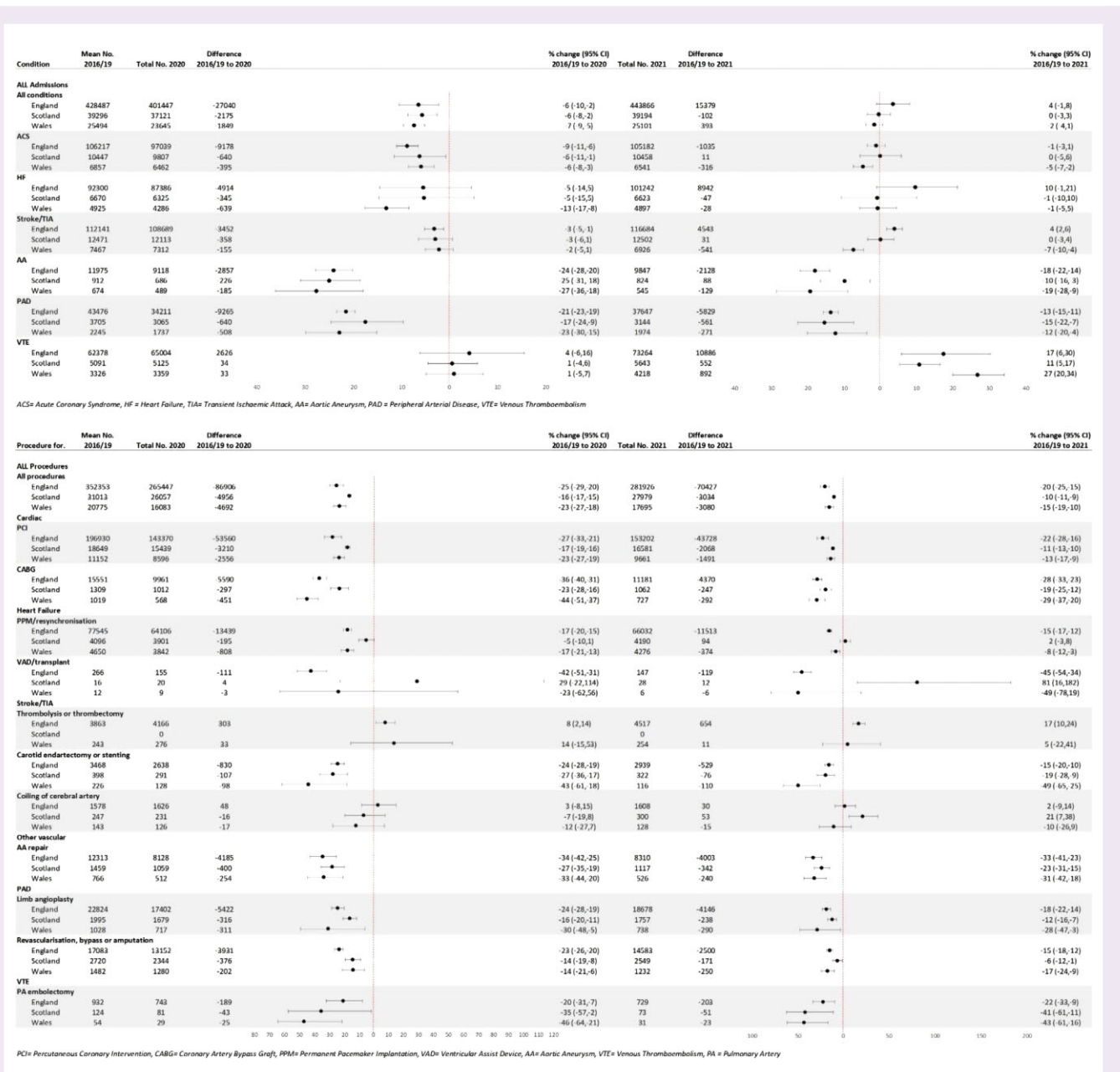


Figure 1. Annual counts and percentage change in total admissions and procedures between pre-pandemic (2016–19) and pandemic (2020–21) periods for cardiovascular disease as primary diagnosis for all cardiovascular disease and across subtypes and across three countries in the UK.

were somewhat more admissions for stroke/TIA in England (+4%). In Scotland, admissions for ACS, HF, and stroke/TIA were similar in 2021 compared to 2016–19. In Wales, admissions for ACS and stroke/TIA were lower, -5 and -7% respectively.

The observed changes were not uniform throughout the two pandemic years (Graphical abstract). In 2020, monthly admissions for all CVD subtypes in all three countries decreased from January, with greatest reductions in April, compared to 2016–19. Admissions remained lower than expected during the rest of 2020, except VTE admissions which increased above 2016–19 levels by May/June 2020 and throughout 2021. In 2021, monthly admissions for all CVD subtypes were lower than 2016–19 levels in January and February in all three countries, except VTE. Timing and extent of recovery to expected levels varied by CVD subtype and country.

Urgency of care

In 2020, there were 14 506 (-4%) fewer emergency admissions than expected for all CVD in the three countries combined, and the proportion reduction was similar in all three countries. For most CVD subtypes, emergency admissions in all three countries were similar to those in 2016–19 (Figure 2). The exceptions were ACS in England (-8%), HF in Wales (-13%), stroke/TIA in England (-3%), AA in England and Scotland (-9 and -12% respectively), and PAD in England (-5%). There were also fewer elective admissions for all CVD in 2020 with a total of 16 560 (-23%) fewer in the three countries (-22% for England and Wales, -30% for Scotland). For most CVD subtypes across countries compared with 2016–19, elective admissions were lower (e.g. -16% ACS in England and stroke/TIA in Scotland, -35% HF in Scotland). Admissions with the greatest reductions were AA

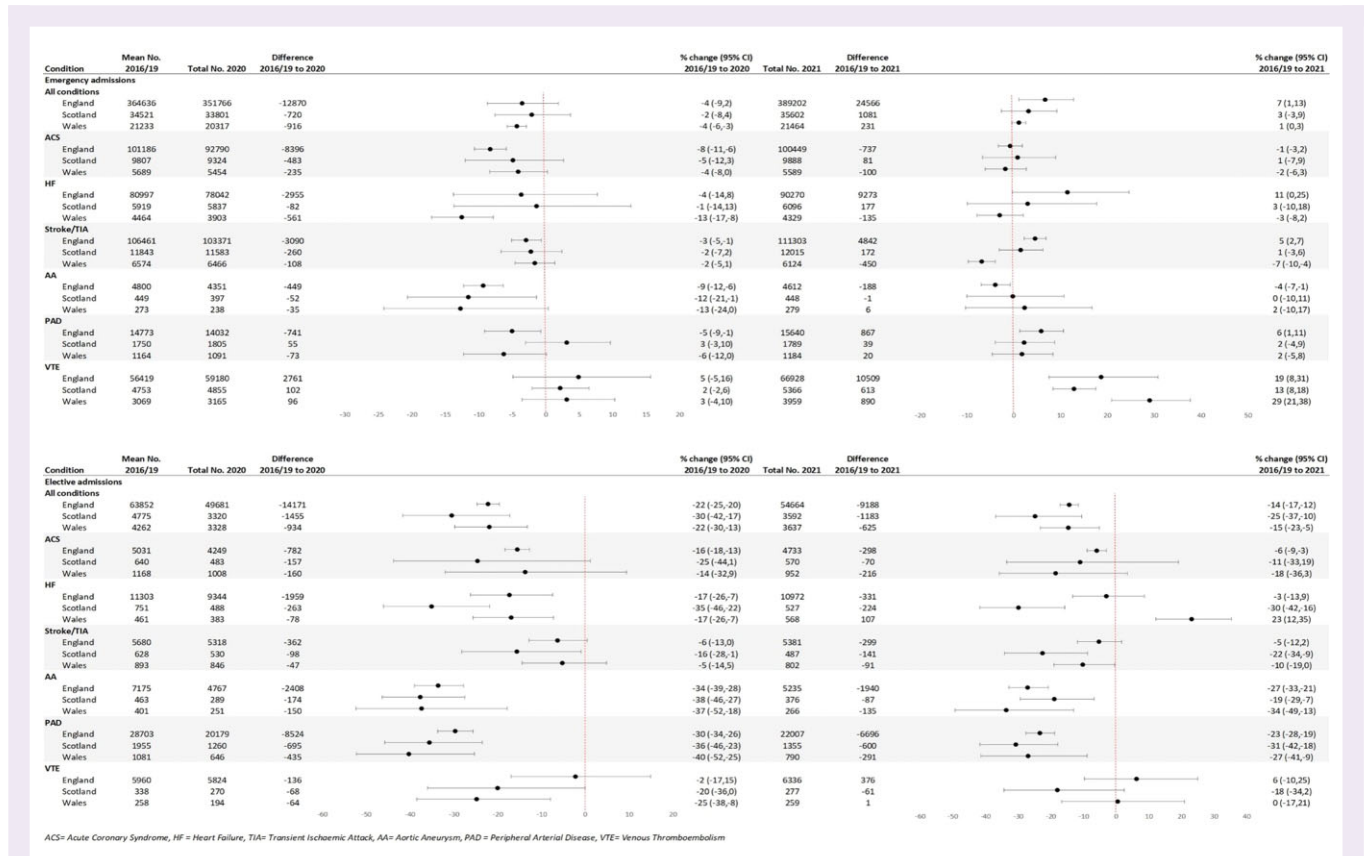


Figure 2. Annual counts and percentage change in total emergency and elective admissions between pre-pandemic (2016–19) and pandemic (2020–21) periods for cardiovascular disease as primary diagnosis for all cardiovascular disease and across subtypes and across three countries in the UK.

(−34, −38, and −37%) and PAD (−30, −36, and −40%) in England, Scotland, and Wales respectively. Admission numbers were similar to 2016–19 for ACS in Scotland and Wales, Stroke/TIA in England and Wales and VTE in England and Scotland. No admissions for CVD subtypes were higher than expected.

In 2021, there were 25 878 (+6%) more emergency CVD admissions in the three countries combined. This was driven by the 7% higher number of admissions in England, while in Scotland and Wales numbers returned to expected levels (Figure 2). For most CVD subtypes across countries, the number of emergency admissions returned to expected levels, although there were some exceptions. Admissions were higher than expected in all three countries for VTE (England +19%, Scotland +29%, and Wales +13%). In England, admissions were higher than expected for HF (+11%), stroke/TIA (+5%), and PAD (+6%) and somewhat lower for AA (−4%). Elective admissions remained lower in 2021 with 10 996 (−15%) fewer CVD admissions than in 2016–19 in the three countries combined (England −14%, Scotland −25%, and Wales −15%). For individual CVD subtypes, elective admissions remained below pre-pandemic levels across all subtypes and countries, except HF in Wales (+23%) (Figure 2). Monthly emergency and elective admissions across CVD subtypes and across countries decreased between January and April 2020 (Figures 3 and 4 respectively). Emergency activity returned to 2016–19 levels by June/July 2020, except for VTE which remained higher throughout the rest of 2020 and 2021. Between February and April 2021, emergency CVD admissions exceeded 2016–19 levels,

then decreased, particularly in Wales, where ACS, HF, and stroke admissions decreased to lower than pre-pandemic levels (Figure 3). Other than VTE, elective admissions did not return to expected levels by end of 2021, across CVD subtypes and countries (Figure 4). Reductions for elective and emergency admissions were greater in England and Wales.

Procedures

Total procedures

In 2020, there were 96 554 (−24%) fewer total procedures for all six CVD subtypes combined in the three UK countries compared with the expected number in 2016–19. In 2021, there were 76 541 (−19%) fewer CVD procedures. In 2020, admissions for all CVD procedures in the three individual countries were lower than expected and varied by country (England −25%, Scotland −16%, Wales −23%) (Figure 1). In 2021, there was a small increase (5–8%) in all CVD procedures in the three countries, but numbers remained below expected levels (England −20%, Scotland −10%, and Wales −15%).

There were major reductions across most individual CVD procedures in 2020 compared to 2016–19. These included percutaneous coronary intervention (range: −17% in Scotland to −27% in England), coronary artery bypass graft surgery (−23% in Scotland to −44% in Wales), carotid endarterectomy (England −24% to Wales −43%) and limb angioplasty (−16% in England to −30% in Wales). Only

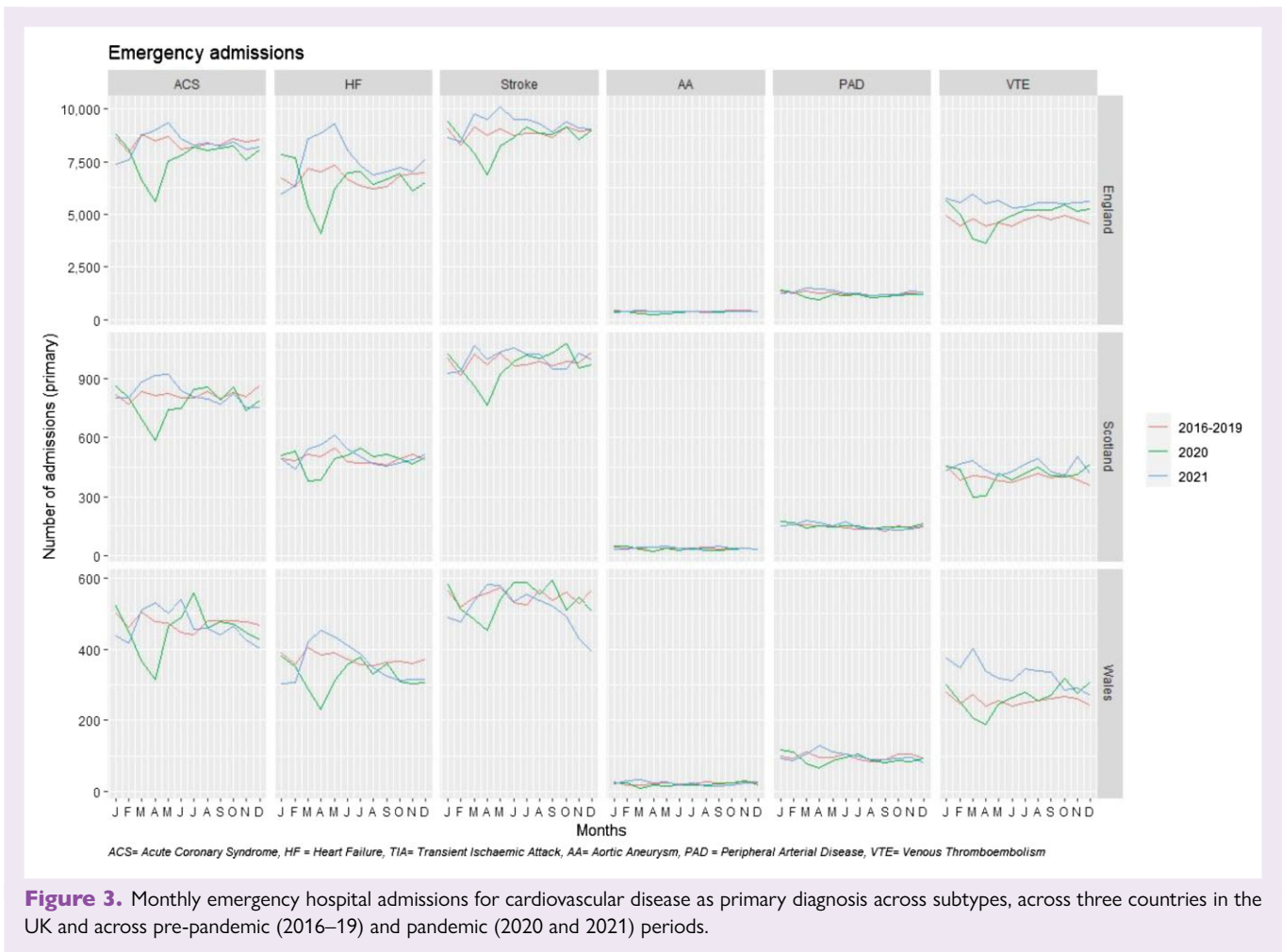


Figure 3. Monthly emergency hospital admissions for cardiovascular disease as primary diagnosis across subtypes, across three countries in the UK and across pre-pandemic (2016–19) and pandemic (2020 and 2021) periods.

stroke thrombolysis in England was higher than expected (+8%), and cerebral artery coiling in all three countries was similar to 2016–19. In 2021, although there was some improvement, most CVD procedures remained well below the expected levels in all three countries, ranging from –6% for PAD re-vascularisation in Scotland to –49% for carotid endarterectomy in Wales. Only stroke thrombolysis in England (+17%), cerebral artery coiling in Scotland (+21%), and ventricular assist device or heart transplant in Scotland (+81%) were higher, but numbers were low and confidence intervals wide. Generally, monthly numbers of CVD procedures were lower in 2020 and 2021, compared to 2016–19 across countries (Figure 5).

Observed changes were not consistent throughout 2020 and 2021 (Figure 5). In 2020, monthly admissions for all CVD procedures in all three countries decreased from January, with greatest reductions in April, compared to 2016–19. Overall admissions for procedures all CVD subtypes remained lower than expected during the rest of 2020 and 2021 in all three countries.

Urgency of care

In 2020 there were 11 775 (–9%) fewer emergency CVD procedures than in 2016–19 in all three countries combined. The proportion change varied between countries (England –10%, Scotland +3%, and Wales –4%) (Figure 6). The total number of individual emergency CVD procedures was either lower than or similar to 2016–19. Examples of procedures that were lower were coronary artery bypass graft surgery (–26% in England, –57% in Wales), carotid endarterectomy

(–36% in Wales), AA repair (–23% in England and –25% in Wales) and pulmonary artery embolectomy (–20% in England). Some procedures were higher in 2020 than expected: permanent pacemaker or resynchronisation therapy in Scotland (+20%) and cerebral artery coiling (+15% in England and +47% in Wales), although numbers were relatively low.

In 2021 there were only 1990 (–2%) fewer emergency CVD procedures in all three countries combined, with some variation observed between countries (England –2%, Scotland +10%, and Wales 0%). Generally, there was variability across individual CVD procedures and countries (Figure 6). For example, emergency coronary artery bypass graft surgery was lower in England (–9%) and Wales (–53%) and higher in Scotland (+46%). However, AA repair across all three countries remained lower in 2021 than in 2016–19 (England –19%, Scotland –18%, and Wales –33%).

For elective CVD procedures in 2020, there were 84 766 (–31%) fewer procedures combined for all three countries (England and Wales –32%, Scotland –21%). Individual elective procedures were all lower in 2020 compared to 2016–19 across countries, except stroke thrombolysis was higher in England (+230%, $N +81$). The reduction in CVD procedures varied by country and procedure, e.g. –39, –39, and –24% for CABG, and –29, –24, and –41% for limb angioplasty in England, Wales, and Scotland, respectively.

In 2021, the reduction in elective procedures persisted with 74 566 (–27%) fewer elective CVD procedures combined for all three countries (England –29%, Scotland –15%, and Wales –23%) (Figure 6).

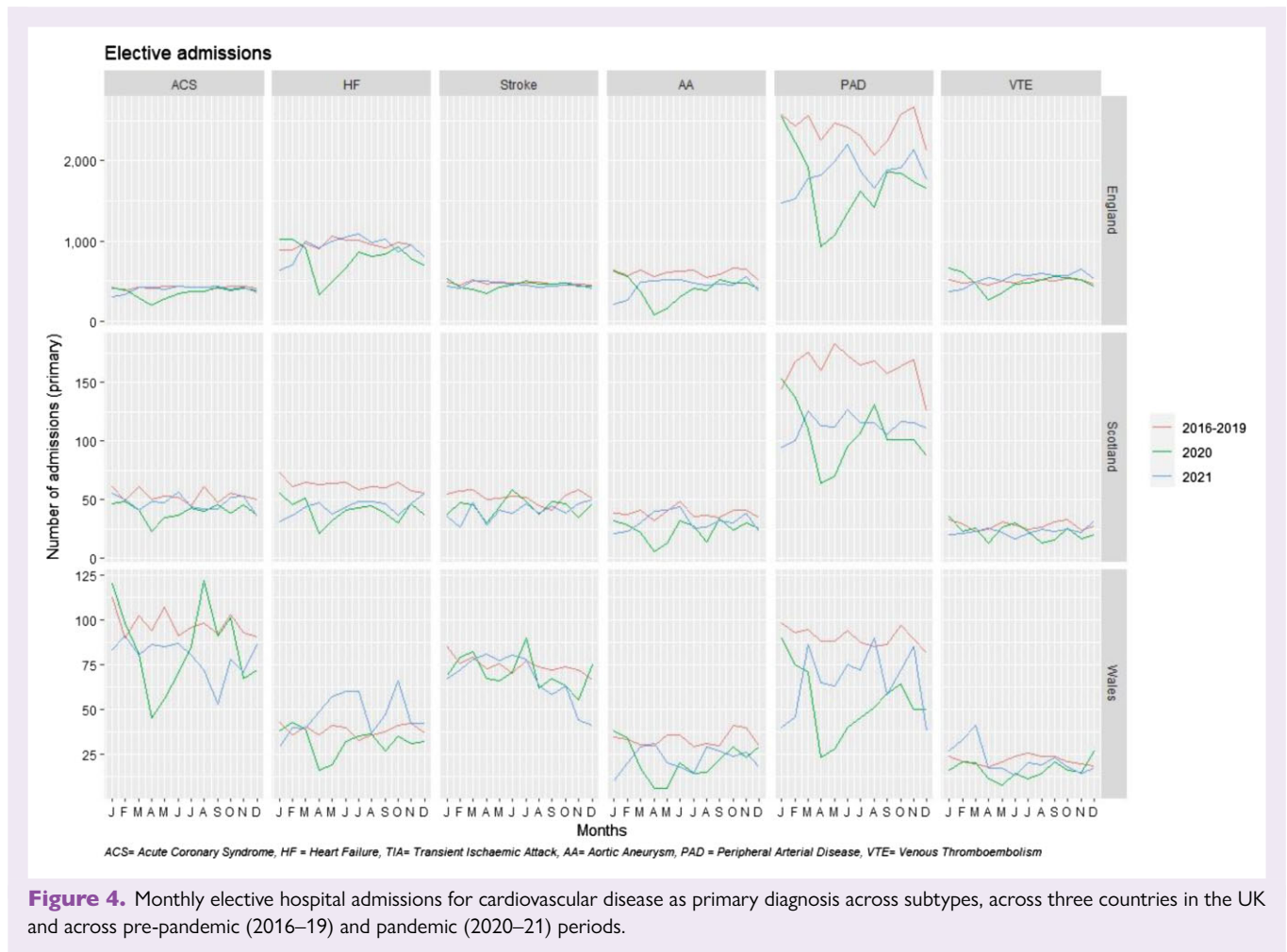


Figure 4. Monthly elective hospital admissions for cardiovascular disease as primary diagnosis across subtypes, across three countries in the UK and across pre-pandemic (2016–19) and pandemic (2020–21) periods.

The reductions continued for all individual elective procedures, except stroke thrombolysis in England. Between January and April 2020, monthly emergency procedures decreased for AA, ACS, HF, and PAD, recovering to pre-pandemic levels in late 2020 and 2021. (Supplementary material online, *Figure S2*). Monthly elective procedures decreased in January to April 2020, across subtypes and countries, and had not recovered to 2016–19 levels by end of 2021 (Supplementary material online, *Figure S3*).

Discussion

In the first comprehensive study to use national routinely collected electronic hospital data in the pandemic context across CVD subtypes, admissions, procedures, urgency of care, and countries, we demonstrate three major findings. First, there were profound reductions across CVD subtypes and countries during the pandemic, particularly for procedural activity which reduced by a third in 2020 and by a quarter in 2021, compared with pre-pandemic levels. Second, except for VTE, although emergency admissions and procedures had returned to pre-pandemic levels by 2021, elective activity remained significantly reduced, especially for procedures. Third, the comorbidity profile for CVD admissions and procedures was more severe during the pandemic than pre-pandemic in England for most CVD subtypes but did not generally differ between 2020–21 and 2016–19 for Scotland and Wales.

Despite multiple analyses of indirect effects in the UK and other countries using EHR,^{11–14,20} these effects have been neglected in pandemic surveillance and policy responses.²¹ Moreover, prior analyses have tended to be disease- or procedure-specific and have not taken a system-level view across diseases and countries.²² We now confirm previous reports of reduced activity for admissions and for PCI and other CVD-related procedures, showing variation by timing, speed, and extent of recovery across subtypes. Given the significant backlogs across services in the UK^{23–25} and other countries,²⁶ there is an urgent need to monitor and understand these indirect impacts of the COVID-19 pandemic, to develop coordinated, but tailored responses, based on subtype, type and urgency of care, and country. Without urgent action, indirect and long-term consequences could create far greater burden and cost to individuals, populations, and health systems than acute, direct effects.

Reductions in emergency care are likely to require different approaches to workforce and resource planning, compared with elective care, and for admissions vs. procedures.^{27,28} Therefore, the greater effect on procedural activity and the relatively slower recovery of elective procedural activity, especially in England and Wales, requires further investigation, explanation, and mitigation strategies. The widespread strain on health systems due to COVID-19 is unprecedented and staff and resource shortages over successive waves may provide part of the explanation. In 2021, some emergency admissions were greater than pre-pandemic levels, which may in part, be related to the reduction in elective admissions and procedures the year

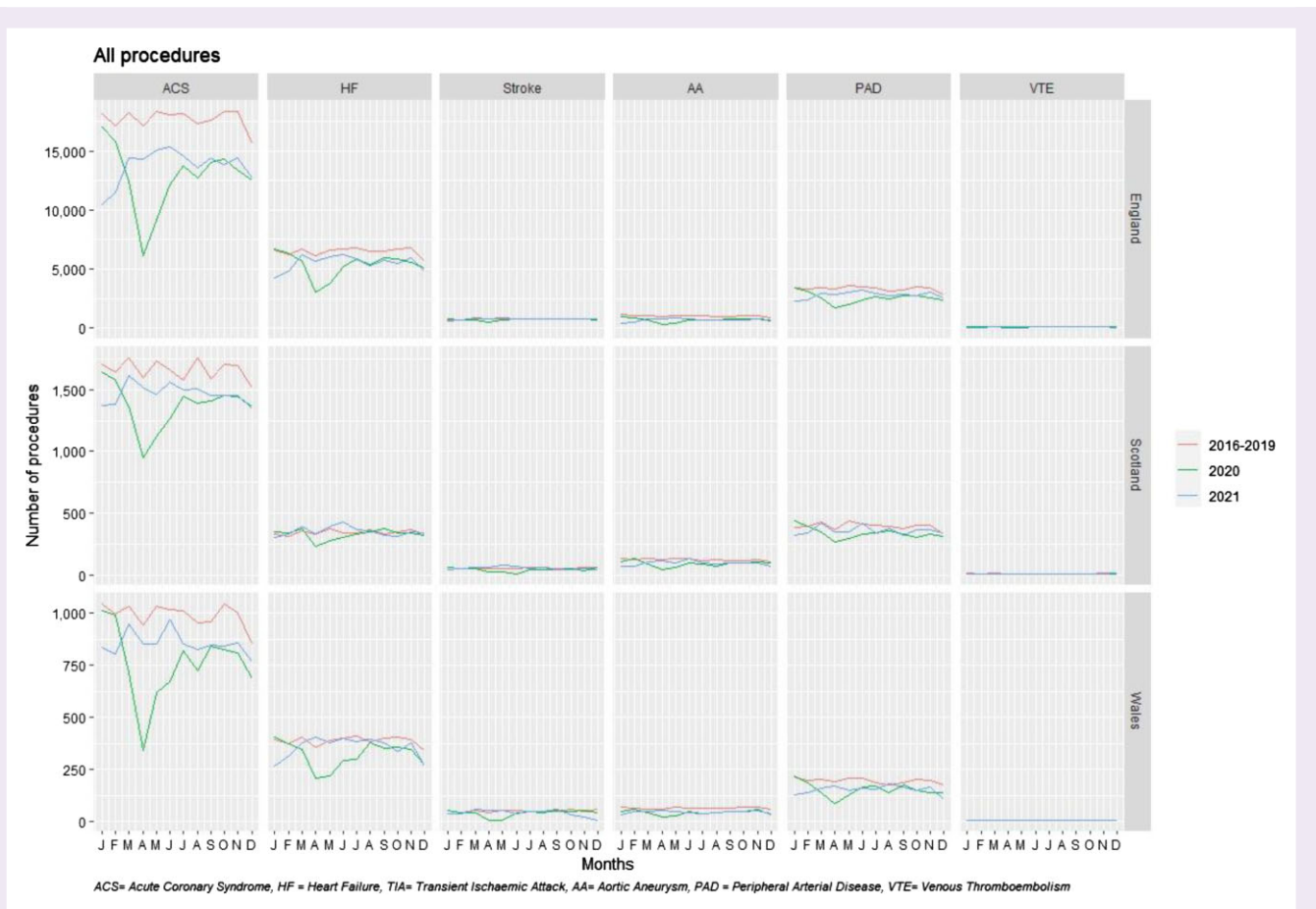


Figure 5. Monthly total procedures for cardiovascular disease across subtypes, across three countries in the UK and across pre-pandemic (2016–19) and pandemic (2020–21) periods.

before. There may also have been changes in coding of admissions as ‘emergency’ or ‘urgent’ so that they were less delayed during the pandemic.

Although projections from national and international efforts such as the Global Burden of Disease Study provide important context,²⁹ more detailed national- and local-level data regarding CVD re-admissions, and non-COVID and CVD deaths are required for informed health policy. Ultimately, answers require standardised, near real-time data which has become possible in the COVID-19 context but has historically not been a priority. To-date, admissions and procedures have been tracked in a ‘rear view mirror’, which is not fit-for-purpose for surveillance and planning during public health emergencies such as pandemics, due partly to specialty- and disease-specific silos, and partly due to a culture of retrospective data collection, monitoring, and analysis. For example, the UK’s National Heart Failure Audit and National Audit of PCI publish annual reports with a one year delay, which has been further delayed or de-prioritised during the pandemic³⁰ and national AA screening data during the pandemic has not been published.³¹ National EHR data can and should be used to study CVD and non-COVID diseases and services at scale, with low-hanging fruits for public health and policy planning during and post-pandemic.

Late presentation, greater severity of illness, and inequalities in access to healthcare have been invoked to explain increased rates of CVD during the pandemic. The finding of similar baseline char-

acteristics before and during the pandemic among most individuals presenting with CVD and undergoing CVD-related procedures in Scotland and Wales suggests that these patient-level factors (including age, sex, and ethnicity) do not fully explain the reductions in CVD care during the pandemic, and that system-level factors may be more important. However, for most CVD subtypes in England, there was greater comorbidity burden in those presenting during pandemic years than during pre-pandemic years, which could suggest decreased prevention, late presentation, and/or reduced access to CVD services. We show differences by subtype, by urgency of care, and by country, which may signify different reasons for reductions in activity and therefore different, nuanced solutions. For example, the higher impact on CABG, carotid endarterectomy, and PAD procedures needs to be explored. There is now clear evidence of increased VTE risk associated with COVID-19, up to 1 year after infection, which at least partly explains the observed increase in VTE admissions and procedures.³² We have only considered certain CVD admissions and procedures, but indirect effects across all diseases and procedures are likely. A complex interplay of factors makes analysis difficult with successive pandemic waves, lockdowns, vaccination programmes, and changing COVID-19-related policies. However, without a whole-system perspective and better up-to-date data, the indirect effect across diseases cannot be quantified, tackled, or predicted. Only then can the correct, nuanced approaches to workforce, public health priorities, and health resource utilisation be planned.

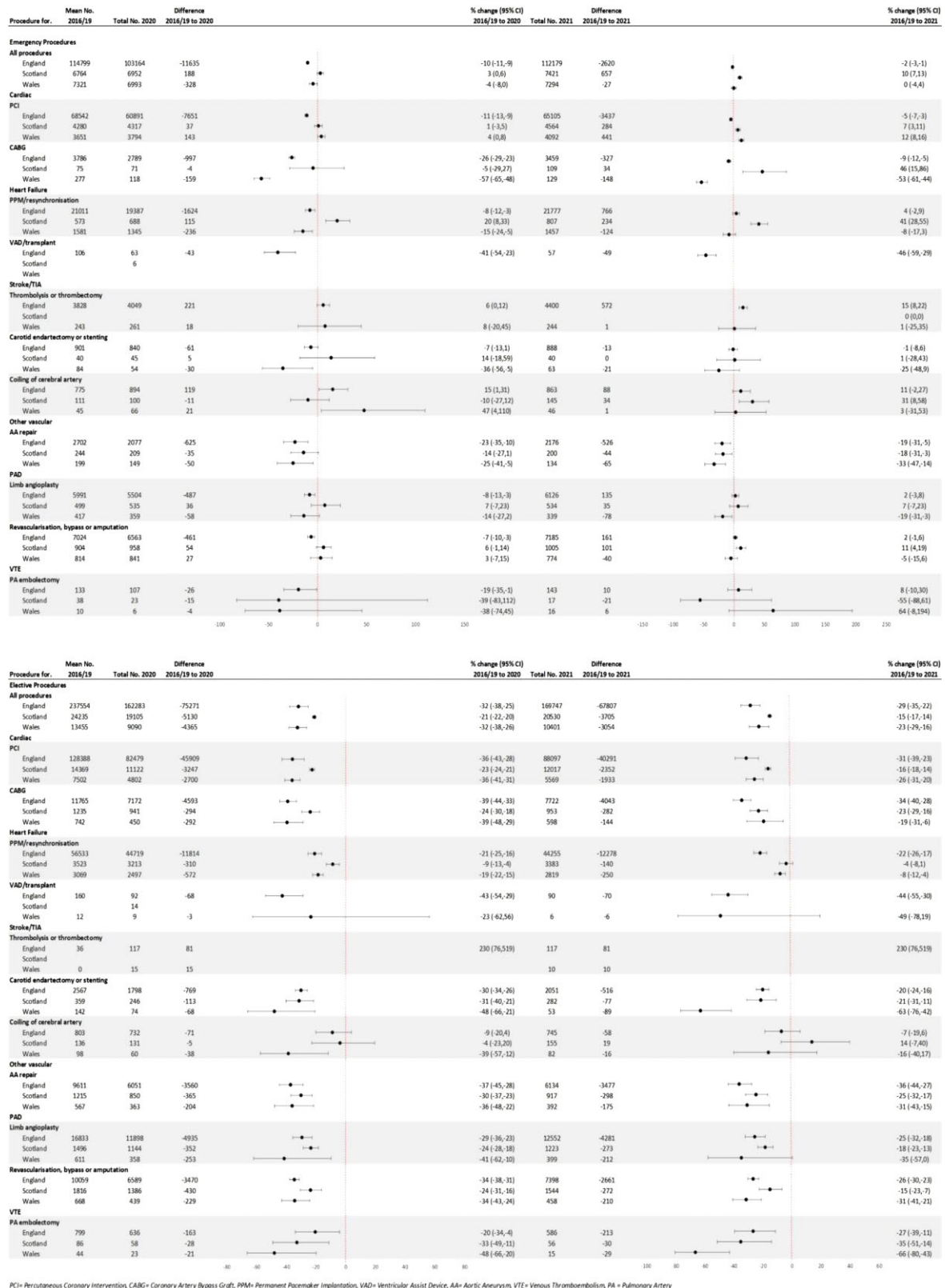


Figure 6. Annual counts and percentage change in total emergency and elective procedures between pre-pandemic (2016–19) and pandemic (2020–21) periods for all cardiovascular procedures and across subtypes and across three countries in the UK.

Strengths/limitations

Our analyses used standardised, validated, open-source coding in national level EHR data in the most comprehensive investigation of indirect effects to-date. We used pre-pandemic data for comparison. We used the same methods for admissions and procedures across diseases, CVD subtypes and comparable datasets across countries.¹⁷ Our study does have some limitations. First, we only investigated some, not all CVD admissions and procedure. Second, there were low numbers for certain procedures, particularly in Scotland and Wales. Third, we only examined inpatient and not outpatient or emergency department activity. Fourth, we only had socio-demographic and comorbidity data at baseline and not tracked over time. Fifth, we do not look in detail at impact of lockdowns, vaccination, and successive waves. Sixth, we are reliant on EHR and coding errors are possible though prior published studies suggest that this is unlikely to be a major issue. Seventh, we did not investigate impact of changes in CVD admissions or procedures on CVD-related mortality, which should be considered in future studies. Eighth, using these data and analyses, we could not conclude whether observed changes were due to patient-driven (e.g. fear of hospital attendance), staff shortage (e.g. redeployment, sickness), or hospital policy (e.g. cancellation of elective procedures), which will require further research. Finally, our analyses only concerned UK healthcare system and data, and may not be necessarily generalisable to other countries and settings.

Implications for clinical practice and policy

Our results suggest that procedural activity needs to be prioritised and planned to provide timely services for high-risk patients during pandemics. Data about potential indirect effects needs to be collected and monitored, and ways of collecting, storing, and analysing data need to be standardised across diseases and procedures, i.e. we cannot have every specialty and disease developing its own methods and 're-inventing the wheel'. During planning for pandemics, NCD surveillance needs to be a part of the preparation and during pandemics, it should be a part of the dashboards.

Implications for research

With the advent of national TRE data, the type of research which we have conducted needs to be scaled up. Open-source data and methods can facilitate valid comparisons within and across countries, but differences in capture and coding of data need to be taken into account. Our methods and our results have application to other diseases^{19,20} and other countries, with potential implications for current and future pandemic policy. The science of pandemic preparedness has been largely restricted to infection dynamics. Future prediction models have to incorporate NCDs, and should include indirect effects, which may be as profound as direct effects.

Conclusions

There have been wide and far-reaching reductions in secondary care for CVD throughout the pandemic, with incomplete recovery, particularly for procedural and elective activity, even 2 years into the COVID-19 pandemic. Monitoring and protection of cardiovascular and non-COVID services should be part of pandemic planning in future.

Supplementary material

Supplementary material is available at *European Heart Journal—Quality of Care and Clinical Outcomes* online.

Acknowledgment

This work is carried out with the support of the BHF Data Science Centre led by HDR UK (BHF Grant no. SP/19/3/34678). This study makes use of de-identified data held in NHS Digital's TRE for England, the SAIL Databank and the Scottish National Data Safe Haven and made available via the BHF Data Science Centre's CVD-COVID-UK/COVID-IMPACT consortium. This work uses data provided by patients and collected by the NHS as part of their care and support. We would also like to acknowledge all data providers who make health relevant data available for research.

The study makes use of anonymised data held in the Scottish National Safe Haven. The authors would like to acknowledge the support of the eDRIS Team (Public Health Scotland) for their involvement in obtaining approvals, provisioning and linking data and the use of the secure analytical platform within the National Safe Haven.

This study makes use of anonymised data held in the SAIL Databank. This work uses data provided by patients and collected by the NHS as part of their care and support. We would also like to acknowledge all data providers who make anonymised data available for research. We wish to acknowledge the collaborative partnership that enabled acquisition and access to the de-identified data, which led to this output. The collaboration was led by the Swansea University Health Data Research UK team under the direction of the Welsh Government Technical Advisory Cell (TAC) and includes the following groups and organisations: the SAIL Databank, Administrative Data Research (ADR) Wales, Digital Health and Care Wales (DHCW), Public Health Wales, NHS Shared Services Partnership (NWSSP) and the Welsh Ambulance Service Trust (WAST). All research conducted has been completed under the permission and approval of the SAIL independent Information Governance Review Panel (IGRP) project number 0911.

The Big Data Institute has received funding from the Li Ka Shing Foundation and Robertson Foundations, the Medical Research Council, British Heart Foundation, and is supported by the NIHR Oxford Biomedical Research Centre.

Funding

The British Heart Foundation Data Science Centre (grant No SP/19/3/34678, awarded to Health Data Research (HDR) UK) funded co-development (with NHS Digital) of the TRE, provision of linked datasets, data access, user software licences, computational usage, and data management and wrangling support with additional contributions from the HDR UK Data and Connectivity component of the UK Government Chief Scientific Adviser's National Core Studies programme to coordinate national covid-19 priority research. Consortium partner organisations funded the time of contributing data analysts, biostatisticians, epidemiologists, and clinicians. This work was supported by the Con-COV team funded by the Medical Research Council (grant number: MR/V028367/1).

This work was supported by Health Data Research UK, which receives its funding from HDR UK Ltd (HDR-9006) funded by the UK Medical Research Council, Engineering and Physical Sciences Research Council, Economic and Social Research Council, Department of Health and Social Care (England), Chief Scientist Office of the Scottish Government Health and Social Care Directorates, Health and Social Care Research and Development Division (Welsh Government), Public Health Agency (Northern Ireland), British Heart Foundation (BHF) and the Wellcome Trust.

This work was supported by the ADR Wales programme of work, aligned to the priority themes 410 as identified in the Welsh Government's national strategy: Prosperity for All. ADR Wales brings together data science experts at Swansea University Medical School, staff from the Wales Institute of Social and Economic Research, Data and Methods (WISERD) at Cardiff University and specialist

teams within the Welsh Government to develop new evidence which supports Prosperity for All by using the SAIL Databank at Swansea University, to link and analyse anonymised data. ADR Wales is part of the Economic and Social Research Council (part of UK Research and Innovation) funded ADR UK (grant ES/S007393/1). This work was supported by the Wales COVID-19 Evidence Centre, funded by Health and Care Research Wales.

Conflict of interest

A.B. has received research grants from National Institute for Health and Care Research (NIHR), British Medical Association, UK Research and Innovation, European Union, and AstraZeneca. A.B. is trustee of the South Asian Health Foundation and Long COVID SOS. Other authors have declared no potential conflicts of interest with respect to the research, authorship, and/or publication of this article.

Authors' contributions

A.B., F.L.W., and E.M. conceptualised the study. F.L.W. and A.B. were the project leads. F.L.W. and A.B. created the data specifications. N.Hall, K.C., D.O'C., Z.K., and D.M-M. were responsible for data extraction. N.I., K.C., D.O'C., D. M-M., and R.G. conducted data analyses. R.G. and E.S. provided statistical advice. F.L.W., E.M., B.L., R.G., and A.B. reviewed the methods and interpreted the data. K.C., N.Herz and N.I. produced the graphics. C.S. is the Director of the BHF Data Science Centre and coordinated approvals for and access to data within NHS Digital's TRE for England, the SAIL Databank and the Scottish National Safe Haven for CVD-COVID-UK/COVID-IMPACT. F.L.W. and A.B. drafted the manuscript and all authors reviewed and edited the final version of the manuscript.

Ethics

The North East—Newcastle and North Tyneside 2 research ethics committee provided ethical approval for the CVD-COVID-UK/COVID-IMPACT research programme (REC No 20/NE/0161) to access, within secure trusted research environments, unconsented, whole-population, de-identified data from electronic health records collected as part of patients' routine healthcare.

Data availability

The data used in this study are available in NHS Digital's TRE for England, but as restrictions apply they are not publicly available (<https://digital.nhs.uk/coronavirus/coronavirus-data-services-updates/trusted-research-environment-service-for-england>). The CVD-COVID-UK/COVID-IMPACT programme led by the BHF Data Science Centre (<https://www.hdruk.ac.uk/helping-with-health-data/bhf-data-science-centre/>) received approval to access data in NHS Digital's TRE for England from the Independent Group Advising on the Release of Data (IGARD) (<https://digital.nhs.uk/about-nhs-digital/corporate-information-and-documents/independent-group-advising-on-the-release-of-data>) via an application made in the Data Access Request Service (DARS) Online system (ref. DARS-NIC-381078-Y9C5K) (<https://digital.nhs.uk/services/data-access-request-service-dars/dars-products-and-services>). The CVD-COVID-UK/COVID-IMPACT Approvals & Oversight Board (<https://www.hdruk.ac.uk/projects/cvd-covid-uk-project/>) subsequently granted approval to this project to access the data within NHS Digital's TRE for England, the Scottish National Safe Haven and the SAIL Databank. The de-identified data used in this study were made available to accredited researchers only. Those wishing to gain access to the data should contact bhfdsc@hdruk.ac.uk in the first instance.

Data used in this study are available in the Scottish National Safe Haven (Project Number: 2021–0102), but as restrictions apply they are not publicly available. Access to data may be granted on application to, and subject to approval by, the Public Benefit and Privacy Panel for Health and Social Care (PBPP (<https://www.informationgovernance.scot.nhs.uk/pbpphpsc/>)). Applications are coordinated by eDRIS (electronic Data Research and Innovation Service (<https://www.isdscotland.org/Products-and-services/Edris/>)). The anonymised data used in this study was made available to accredited researchers only through the Public Health Scotland (PHS) eDRIS User Agreement (https://www.isdscotland.org/Products-and-services/Edris/_docs/eDRIS-User-Agreement-v16.pdf).

The data used in this study are available in the SAIL Databank at Swansea University, Swansea, UK, but as restrictions apply they are not publicly available. All proposals to use SAIL data are subject to review by an independent Information Governance Review Panel (IGRP). Before any data can be accessed, approval must be given by the IGRP. The IGRP gives careful consideration to each project to ensure proper and appropriate use of SAIL data. When access has been granted, it is gained through a privacy protecting safe haven and remote access system referred to as the SAIL Gateway. SAIL has established an application process to be followed by anyone who would like to access data via SAIL at <https://www.saildatabank.com/application-process>

References

- Banerjee A, Pasea L, Harris S, Gonzalez-Izquierdo A, Torralbo A, Shallcross L et al. Estimating excess 1-year mortality associated with the COVID-19 pandemic according to underlying conditions and age: a population-based cohort study. *Lancet North Am Ed.* 2020;**395**:1715–1725.
- Ball S, Banerjee A, Berry C, Boyle JR, Bray B, Bradlow W et al. Monitoring indirect impact of COVID-19 pandemic on services for cardiovascular diseases in the UK. *Heart.* 2020;**106**:1890–1897.
- Banerjee A, Chen S, Pasea L, Lai AG, Katsoulis M, Denaxas S et al. Excess deaths in people with cardiovascular diseases during the COVID-19 pandemic. *Eur J Prev Cardiol.* 2021;**28**:1599–1609.
- Lai AG, Pasea L, Banerjee A, Hall G, Denaxas S, Chang WH et al. Estimated impact of the COVID-19 pandemic on cancer services and excess 1-year mortality in people with cancer and multimorbidity: near real-time data on cancer care, cancer deaths and a population-based cohort study. *BMJ Open.* 2020;**10**:e043828.
- Ho KMA, Banerjee A, Lawler M, Rutter MD, Lovat LB. Predicting endoscopic activity recovery in England after COVID-19: a national analysis. *Lancet Gastroenterol Hepatol.* 2021;**6**:381–390.
- Islam N, Shkolnikov VM, Acosta RJ, Klimkin I, Kawachi I, Irizarry RA et al. Excess deaths associated with covid-19 pandemic in 2020: age and sex disaggregated time series analysis in 29 high income countries. *BMJ.* 2021;**373**:n1137.
- Martin GP, Curzen N, Goodwin AT, Nolan J, Balacumaraswami L, Ludman PF et al. Indirect impact of the COVID-19 pandemic on activity and outcomes of transcatheter and surgical treatment of aortic stenosis in England. *Circ Cardiovasc Interv.* 2021;**14**:e010413.
- Horton R. Offline: COVID-19 is not a pandemic. *Lancet North Am Ed.* 2020;**396**:874.
- Mizani MA, Dashtban A, Pasea L, Lai AG, Thygesen J, Tomlinson C et al. CVD-COVID-UK Consortium. Using national electronic health records for pandemic preparedness: validation of a parsimonious model for predicting excess deaths among those with COVID-19—a data-driven retrospective cohort study. *J R Soc Med.* 2022. doi:10.1177/01410768221131897
- Vos T, Allen C, Arora M, Barber RM, Brown A, Carter A et al. Global, regional, and national incidence, prevalence, and years lived with disability for 310 diseases and injuries, 1990–2015: a systematic analysis for the Global Burden of Disease Study 2015. *Lancet North Am Ed.* 2016;**388**:1545–1602.
- Guarinello GG, D'Amico RC, Miranda ANM, Novack J, Coral FE. Impacto da COVID-19 no perfil cirúrgico dos pacientes de cirurgia vascular em serviço de referência em Curitiba. *J Vasc Bras.* 2022;**21**:e20220027.
- Lechner I, Reindl M, Tiller C, Holzknicht M, Troger F, Fink P et al. Impact of COVID-19 pandemic restrictions on ST-elevation myocardial infarction: a cardiac magnetic resonance imaging study. *Eur Heart J.* 2022;**43**:1141–1153.

13. Shoaib A, van Spall HGC, Wu J, Cleland JGF, McDonagh TA, Rashid M et al. Substantial decline in hospital admissions for heart failure accompanied by increased community mortality during COVID-19 pandemic. *Eur Heart J Qual Care Clin Outcomes*. 2021;**7**:378–387.
14. Denaxas S, Gonzalez-Izquierdo A, Direk K, Fitzpatrick NK, Fatemifar G, Banerjee A et al. UK phenomics platform for developing and validating electronic health record phenotypes: CALIBER. *J Am Med Inform Assoc*. 2019;**26**:1545–1559.
15. Thygesen JH, Tomlinson C, Hollings S, Mizani MA, Handy A, Akbari A et al. COVID-19 trajectories among 57 million adults in England: a cohort study using electronic health records. *The Lancet Digital Health*. 2022;**4**:e542–e557.
16. Wood A, Denholm R, Hollings S, Cooper J, Ip S, Walker V et al. Linked electronic health records for research on a nationwide cohort of more than 54 million people in England: data resource. *BMJ*. 2021;**373**:n826.
17. ISD Scotland. SMR Datasets. <https://www.ndc.scot.nhs.uk/Data-Dictionary/SMR-Datasets/SMR01-General-Acute-Inpatient-and-Day-Case/> (Accessed 10/10/2022)
18. Jones KH, Ford DV, Jones C, Dsilva R, Thompson S, Brooks CJ et al. A case study of the Secure Anonymous Information Linkage (SAIL) Gateway: a privacy protecting remote access system for health related research and evaluation. *J Biomed Inform*. 2014;**50**:196–204.
19. Szakmany T, Hollinghurst J, Pugh R et al. Frailty assessed by administrative tools and mortality in patients with pneumonia admitted to the hospital and ICU in Wales. *Sci Rep*. 2021;**11**:13407.
20. Banerjee A, Chen S, Pasea L et al. Excess deaths in people with cardiovascular diseases during the COVID-19 pandemic. *Eur J Prev Cardiol*. 2021;**28**:1599–1609.
21. Banerjee A, Sudlow C, Lawler M. Indirect effects of the pandemic: highlighting the need for data-driven policy and preparedness. *J R Soc Med*. 2022;**115**:249–251.
22. Grimm F, Johansen A, Knight H, Brine R, Deeny SR. Indirect effect of the COVID-19 pandemic on hospital mortality in patients with hip fracture: a competing risk survival analysis using linked administrative data. *BMJ Qual Saf*. 2022. doi:10.1136/bmjqs-2022-014896.
23. UK Government. Department of Health and Social Care. Direct and indirect health impacts of COVID-19 in England: emerging Omicron impacts. 4 August 2022. <https://www.gov.uk/government/publications/direct-and-indirect-health-impacts-of-covid-19-in-england-emerging-omicron-impacts/direct-and-indirect-health-impacts-of-covid-19-in-england-emerging-omicron-impacts>
24. Friebl R, Fistein J, Maynou L, Anderson M. Emergency contracting and the delivery of elective care services across the English National Health Service and independent sector during COVID-19: a descriptive analysis. *BMJ Open*. 2022;**12**:e055875.
25. McLellan A, Abbasi K. The NHS is not living with Covid, it's dying from it. *BMJ*. 2022;**378**:o1779.
26. van Ginneken E, Reed S, Siciliani L, Eriksen A, Schlepper L, Tille F et al. European Observatory on Health Systems and Policies. Addressing backlogs and managing waiting lists during and beyond the COVID-19 pandemic. *Policy Brief*. 2022;**47**. <https://www.who.int/europe/news/item/20-07-2022-covid-19-has-caused-major-disruptions-and-backlogs-in-health-care-new-who-study-finds>
27. McCabe R, Schmit N, Christen P, D'Aeth JC, Løchen A, Rizmie D et al. Adapting hospital capacity to meet changing demands during the COVID-19 pandemic. *BMC Med*. 2020;**18**:329.
28. Nehme R, Puchkova A, Parlikad A. A predictive model for the post-pandemic delay in elective treatment. *Oper Res Health Care*. 2022;**34**:100357.
29. Roth GA, Johnson C, Abajobir A, Abd-Allah F, Abera SF, Abyu G et al. Global, regional, and national burden of cardiovascular diseases for 10 causes, 1990 to 2015. *J Am Coll Cardiol*. 2017;**70**:1–25. doi: 10.1016/j.jacc.2017.04.052. Epub 2017 May 17.
30. National Institute for Cardiovascular Outcomes Research (NICOR). *NICOR COVID-19 Report. Rapid cardiovascular data: we need it now (and in the future)*. 2021. <https://www.nicor.org.uk/covid-19-and-nicor/nicor-covid-19-report/>
31. UK Government. Abdominal aortic aneurysm screening: standards report 2019 to 2020. Data report for abdominal aortic aneurysm screening for 1 April 2019 to 31 March 2020. 25 Feb 2021. <https://www.gov.uk/government/statistics/abdominal-aortic-aneurysm-screening-standards-report-2019-to-2020>
32. Knight R, Walker V, Ip S, Cooper JA, Bolton T, Keene S et al. Association of COVID-19 with major arterial and venous thrombotic diseases: a population-wide cohort study of 48 million adults in England and Wales. *Circulation*. 2022;**146**:892–906.