



***In vitro* Cleavage Assays Using Purified Recombinant *Drosophila* Caspases for Substrate Screening**

Prathibha Yarikipati,

Andreas Bergmann

UMass Chan Medical School, Department of Molecular, Cell and Cancer Biology, 364 Plantation Street, LRB 419, Worcester, MA, USA

Abstract

Caspases are very specific cell death proteases that are involved in apoptotic and non-apoptotic processes. While the role of caspases during apoptosis has been very well defined and many apoptotic proteolytic substrates of caspases have been identified and characterized, the role of caspases for non-apoptotic processes is not well understood. In particular, few non-apoptotic substrates of caspases have been identified thus far. Here, in order to facilitate the identification and characterization of potential caspase substrates, a protocol that allows the testing of candidate substrates in caspase cleavage assays *in vitro* is described. This protocol includes the production and purification of recombinant caspase proteins, the production of the candidate substrates either recombinantly or in a cell-free expression system, and the actual *in vitro* cleavage reaction followed by SDS-PAGE and immunoblotting. This protocol is tailored for the *Drosophila* caspases Dronc and Drice but can easily be adopted for caspases from other organisms including mammals.

SUMMARY:

Here we present a protocol to express and purify recombinant *Drosophila* caspases Dronc and Drice, and their use in *in vitro* cleavage assays.

INTRODUCTION:

Programmed cell death or apoptosis is executed by a class of highly specialized cell death proteases termed caspases (reviewed in reference¹). Caspases are Cys proteases that contain a Cys residue in the catalytic site. They have defined consensus cleavage sites and cleave substrates proteolytically after Asp residues (although the *Drosophila* caspase Dronc has also been reported to cleave after Glu residues²). They are subdivided into initiator (also known as apical or upstream) and effector (executioner or downstream) caspases. Initiator caspases activate effector caspases. For example, in mammals, the initiator caspase Caspase-9 cleaves and activates the effector caspase Caspase-3³. Likewise, in *Drosophila melanogaster*, the caspase-9-ortholog Dronc cleaves and activates the caspase-3-ortholog

corresponding author: Andreas Bergmann (andreas.bergmann@umassmed.edu).

A complete version of this article that includes the video component is available at <http://dx.doi.org/10.3791/64392>.

DISCLOSURES:

The authors declare no competing interests.

Drice^{2,4}. During apoptosis, effector caspases cleave hundreds of substrates leading to the death of the cell⁵.

Caspases are synthesized as inactive proenzymes (zymogens) in the cell. In this form, they contain an N-terminal prodomain, a large subunit with the catalytic Cys in the central portion of the proenzyme, and a small subunit at the C-terminus¹ (Figure 1). The mechanism of activation is different between initiator and effector caspases. Initiator caspases (Caspase-9, Dronc) require dimerization for activation which occurs by incorporation into a large protein complex, termed the apoptosome⁶. For the incorporation into the apoptosome, Caspase-9 and Dronc carry a caspase activation and recruitment domain (CARD) in the N-terminal prodomain (Figure 1). The apoptosome component Apaf-1 also contains a CARD and recruits Caspase-9 or Dronc via CARD/CARD interaction into the apoptosome^{3,6,7}. While Caspase-9 and Dronc can be proteolytically processed in the apoptosome, this processing is not fully required for enzymatic activity^{8,9}.

In contrast, effector caspases (Caspase-3, Drice) do not carry a CARD in their prodomains and are not incorporated into large protein complexes for activation¹. They are dependent on proteolytic cleavage by active Caspase-9 or Dronc¹, respectively. The active effector caspase forms a tetramer composed of two large and two small subunits, and thus contains two catalytic sites (Figure 1). Importantly for this protocol, recombinant expression of caspases in *E.coli* causes auto-processing and activation of caspases including Drice¹⁰ and Dronc^{2,8,9,11,12}, even in the absence of Apaf-1. This auto-processing allows to perform *in vitro* cleavage assays of candidate substrates with recombinant caspase protein.

Caspases are not only involved in apoptosis, but they can also have many non-apoptotic functions including proliferation, differentiation, cell migration, neuronal pruning, innate immunity, and others¹³⁻¹⁵. It is currently unknown how cells can survive despite containing active caspases during non-apoptotic processes. It is possible that these cells activate caspases only at sub-lethal levels¹⁶ or they sequester active caspases in non-apoptotic compartments of the cell such as the plasma membrane^{17,18}. Therefore, the identification and verification of non-apoptotic substrates will not only reveal how caspases mediate non-apoptotic processes but may also help to understand how cells can survive in the presence of active caspases.

Candidate proteins as caspase substrates can be identified using genetic and biochemical methods. Identified proteins can be checked for the presence of the consensus Dronc cleavage sites. This can be done by simply inspecting the protein sequence by hand or using more sophisticated online bioinformatic tools such as CasCleave (<https://sunflower.kuicr.kyoto-u.ac.jp/~sjn/Cascleave/>)^{19,20}. These tools use the known consensus cleavage sites of caspases and structural considerations to predict novel targets of caspases. While CasCleave incorporates the information of verified substrates from human Caspases-1, -3, -6, -7, and -8, it may nevertheless also be useful for the purposes described here as these caspases and their consensus cleavage sites are well conserved. However, because the Dronc cleavage site is not well defined (two studies identified two different optimal cleavage sites, TATD/E² and LALD⁹), the candidate substrates are also examined for the presence of other caspase cleavage site including Drice.

To validate the predicted substrates of caspases, additional assays are necessary. One of these assays is the demonstration that a given caspase can actually cleave the candidate protein *in vitro*. Here, we provide a convenient protocol for *in vitro* caspase cleavage assays. Using this protocol, candidate substrates are tested with Dronc as the caspase. They can also be tested as substrates of Drice. Although this protocol is written for the *Drosophila* caspases Dronc and Drice, it can also be adapted for caspases from other organisms.

The extraction and purification of Dronc and Drice along with the *in vitro* cleavage assay must be performed on the same day due to the loss of catalytic activity by these caspases. This protocol has been modified and optimized from previous publications^{8,9,11,12,21,22}. In this protocol, four different caspase proteins are recombinantly expressed in the *E.coli* strain BL21(DE3)pLysS. These proteins are: 6xHis-Dronc^{wt}, 6xHis-Dronc^{C318A}, 6xHis-Drice^{wt} and 6xHis-Drice^{C211A}. Each of these proteins is tagged with 6- Histidine residues (6xHis) tag at the N-terminus for purification. Dronc^{wt} and Drice^{wt} are the wild-type proteins and can auto-process into the active caspase upon recombinant expression. Dronc^{C318A} and Drice^{C211A} encode mutant forms of Dronc and Drice that change the catalytic Cys residue to an Ala residue. These constructs are catalytically inactive and cannot auto-process (see also Figure 2A). They are used as controls in the cleavage assay. Because Drice^{C211A} cannot auto-process, it is also used as the model substrate for Dronc^{wt} in the *in vitro* cleavage assay described here.

PROTOCOL:

1. Recombinant Caspase Expression in Bacteria

1.1. Clone the gene of interest (Caspase or putative substrate) into a bacterial expression vector with N- and/or C-terminal tag(s) using standard protocols²³.

NOTE: Tags can increase the solubility of the recombinant proteins and are used for purification of the recombinant proteins. Here, Dronc, Drice and their catalytic mutants are cloned into the vector pET28a which provides an N-terminal 6xHis tag (pET28a-6xHis-Dronc^{wt}, pET28a-6xHis-Dronc^{C318A}, pET28a-6xHis-Drice^{wt}, pET28a-6xHis-Drice^{C211A}) (for primer information see Supplementary Table 2).

1.2. Transform the vectors with the genes of interest into competent BL21(DE3)pLysS *E.coli* cells using standard procedures^{23,24}. Plate the transformation mixture on LB agar plates with the appropriate antibiotic (kanamycin in case of pET28a) to select transformed bacteria. (Refer to Supplementary Table 1).

1.3. Pick a colony from the plate and inoculate in 5 mL LB medium containing the appropriate antibiotic to grow overnight at 37 °C at 220 rpm on a shaking platform.

1.4. On the next day, prepare 30–50 mL (per sample) of LB medium with antibiotic and add 1 mL of the overnight grown culture. The optical density at 600 nm (OD₆₀₀) using a bio photometer/spectrophotometer should be between 0.1 and 0.2.

1.5. Grow the culture at 37 °C at 220 rpm on a shaking platform until OD₆₀₀ reaches 0.6. Check OD₆₀₀ every hour until it reaches 0.6. This will take about 2 to 3 hours.

1.6. To induce protein (caspase) expression, add IPTG to a final concentration of 0.1–0.2 mM (dilute 1:1,000 – 1:500 from IPTG stock, see Supplementary Table 1).

1.7. Grow the cultures for 3 h at 30 °C at 220 rpm.

NOTE: Time and temperature are dependent on what kind of protein is being expressed and its solubility. These conditions may need to be adjusted.

1.6. After 3 hours, spin down the cultures in 50 mL centrifuge tubes for 20 min at 4 °C at 2000 × g. Discard the supernatant and proceed with the pellet.

NOTE: The protocol can be stopped at this point and continued later. Bacterial pellets can be frozen at –80 °C.

2. Small-scale Recombinant Caspases extraction

2.1. Remove the frozen tubes with the pelleted cultures from –80 °C storage and keep them on ice for 10 min to soften the pellet.

2.2. After 10 min, add 0.6 mL of bacterial cell lysis buffer (Supplementary Table 1) supplemented with freshly added protease inhibitors, 10 mg/mL of lysozyme and 50 units/mL benzonase into the pellet-containing tubes using a pipette controller with a 1 mL serological pipette.

2.3. With the same pipette tip, dissolve the pellet by pipetting up and down until a clear pale-yellow solution without any pellet particles is visible. Incubate for 30 min on ice.

2.4. Centrifuge the lysates for 40 min at 17,000 × g at 4 °C.

2.5. Transfer the supernatants into 1.5 mL microcentrifuge tube. This is the crude extract containing the caspases.

2.6. Keep the tubes on ice and proceed for purification with Ni-NTA agarose.

3. Small-scale His-tagged Caspases Purification.

3.1. Add 0.2 mL of the 50% slurry of Ni-NTA agarose to each tube of the caspase extracts from step 2.5. Rotate tubes on end-on-end rotator for 1 h at 4 °C.

3.2. After 1 h, add the extract with the Ni-NTA agarose to 1 mL polypropylene columns with the tip intact, placed in a rack. Let it stand for 5 min.

3.3. After 5 min, remove the cap of the columns and let the supernatant flow out by gravity flow.

3.4. Carefully add 1 mL wash buffer (Supplementary Table 1) to the columns without disturbing the packed resin of Ni-NTA agarose and wash it through gravity flow.

3.5. Perform washing step three times.

3.6. For elution of the caspases, place 1.5 mL microcentrifuge tubes under the collecting nozzle of the columns after complete draining of the wash buffer.

3.7. Add 0.5 mL of elution buffer (supplemented with 1x protease inhibitors immediately before use) to each column and collect the eluate in the 1.5 mL microcentrifuge tubes.

NOTE: The fine purified eluate will be transparent in color.

3.9. Keep the eluates on ice and measure the concentration of proteins by Bradford assay²⁵. Confirm purity/homogeneity of purified caspases by SDS-PAGE followed by Coomassie Blue staining²⁶.

NOTE: The yield of a 50 mL LB culture ranges between 0.5 and 1.5 mg of caspase protein. Given that 0.5 mL elution buffer is used for elution, the concentration ranges from 1 to 3 mg/mL. It is important to use the purified caspase eluates for *in vitro* cleavage assays on the same day of lysis and purification as these caspase preparations lose activity over night.

4. Expression of the putative caspase substrate in cell-free expression systems.

NOTE: In this protocol, Drice, the natural substrate of Dronc, is prepared by both recombinant expression in *E.coli* (see Section 3 above) and by expression in rabbit reticulocyte lysate (RRL), a mammalian cell-free expression system (this section, see below).

4.1. Clone the gene of the putative substrate into an expression vector containing either a T7, T3 or SP6 promoter using standard procedures²³.

NOTE: In this protocol, Drice^{C211A} is being used as the model substrate and was cloned into the vector pT7CFE1-N-Myc which carries a T7 promoter for gene expression and tags the putative protein substrate with an N-terminal Myc-tag for detection by immunoblotting.

4.2. In RRL, candidate substrates can be synthesized either radioactively or non-radioactively.

4.2.1. Non-radioactive synthesis: In a 0.5 mL microcentrifuge tube, add 25 μ L of RRL lysate, 2 μ L of reaction buffer, 0.5 μ L of Amino Acid Mixture -Minus Leucine (1mM), 0.5 μ L of Amino Acid Mixture-Minus Methionine (1mM), 1 μ L of Ribonuclease Inhibitor (40U/ μ L), 2 μ L of DNA Template (0.5 μ g/ μ L) and 1 μ L of T7-RNA Polymerase. Add nuclease-free water to adjust the final volume of the reaction to 50 μ L. Mix the components by pipetting up and down five times.

NOTE: The RRL lysate contains 100–200 mg/ml of endogenous proteins. For *in vitro* translation reactions, provide the RRL at 50% concentration (here 25 μ L/50 μ L reaction).

4.2.2. Radioactive synthesis: In a 0.5 mL microcentrifuge tube, add 25 μ L of RRL lysate, 2 μ L of reaction buffer, 0.5 μ L of Amino Acid Mixture-Minus Methionine (1mM), 1 μ L of Ribonuclease Inhibitor (40U/ μ L), 2 μ L of DNA Template (0.5 μ g/ μ L), 2 μ L of S³⁵-labeled Methionine (1000 Ci/mmol at 10 mCi/mL) and 1 μ L of T7-RNA Polymerase. Add nuclease-

free water to adjust the final volume of the reaction to 50 μ L. Mix the components by pipetting up and down five times. Dispose of tips and tubes in a radioactive waste container.

NOTE: Do not add the Amino Acid Mixture without Leucine. The pT7CFE1 vector uses a T7 promoter for protein expression. Other vectors use T3 or SP6 promoters. In that case, T3 or SP6 RNA polymerases should be used instead of T7 RNA polymerase. Please make sure that the DNA template is of high purity.

4.3. Incubate the reaction at 30 $^{\circ}$ C for 90 min.

4.4. Spin briefly for 10 s and place tubes on ice. Check the expression level of the putative substrate in RRL by SDS-PAGE and immunoblotting/autoradiography.

NOTE: The amount of RRL extract added to the cleavage reaction should be based on the amount of protein that can be detected by the detection method (either immunoblotting or S^{35} autoradiography). Proceed to *in vitro* cleavage assay (next section) or store at -80° C.

5. *In vitro* Cleavage Assay with substrates generated with RRL

5.1. Take the putative substrate(s) generated, as described in Section 4. In this protocol, N-Myc-Drice^{C211A} is used as model substrate.

5.2. Depending on the expression level of the putative substrate (to be determined separately by immunoblot or autoradiography analysis, see Step 4.4.), use 1–10 μ l of the RRL lysate programmed with the protein of interest in the cleavage assay.

5.3. Add 10 μ g of purified caspase protein generated in Sections 1, 2 and 3.

5.4. Bring the total reaction volume to 50 μ L with caspase assay buffer.

5.5. Incubate the reactions in a water bath at 30 $^{\circ}$ C for 3 h. Make sure to include the appropriate controls in the cleavage assay. Here, the catalytic mutant Dronc^{C318A} is used as control.

5.6. After 3 h, stop the reactions by transferring the tubes on ice.

5.7. Add one volume of LDS sample buffer containing 50 mM DTT. The reaction is stopped completely with the addition of LDS sample buffer.

5.8. Incubate the samples at 75 $^{\circ}$ C in a heat block for 10 min.

5.9. Quickly spin, mix by flicking, load 24 μ L per sample and run SDS-PAGE (see section 7) or store the samples at -20° C.

6. *In vitro* cleavage assay with bacterially expressed recombinant substrate protein

6.1. Add 10 μ g of purified candidate substrate (here 6xHis-Drice^{C211A}, generated in Sections 1, 2 and 3) to a 1.5 mL microcentrifuge tube.

6.2. Add 10 μg of purified caspase proteins generated in Sections 1 and 2. Bring total volume to 50 μl using caspase assay buffer.

6.3. Follow steps 5.5. to 5.9.

7. SDS-PAGE and immunoblotting

7.1. Load the cleavage reactions (24 μL) onto 4–12% Tris-Glycine or Bis-Tris gradient gels (Table of Materials) and perform protein electrophoresis and immunoblotting (or autoradiography if using S^{35} -labeled substrates) to visualize results using standard procedures^{27,28}.

NOTE: Here, in this protocol, Bis-Tris gradient gels with Mops running buffer and LDS loading buffer were used. In general, the commonly used PAGE protocols of Tris-Glycine gels run with Tris-Glycine-SDS running buffer and SDS-loading buffer do work well.

REPRESENTATIVE RESULTS:

This protocol provides step-by-step instructions for the caspase protein induction in *E.coli*, purification of the recombinant *Drosophila* caspases Dronc and Drice, the synthesis of candidate substrates and the *in vitro* cleavage reaction with candidate substrates (here Drice^{C211A}) and the caspase Dronc. The catalytic mutant Drice^{C211A} was used as model substrate in this assay because it does not have auto-processing activity (Figure 2A) and remains full-length until it is cleaved by Dronc^{wt}. Drice^{C211A} should always be used as a positive control to validate that the Dronc^{wt} preparation has enzymatic activity.

Figure 2A provides a representative example of the expression and purification of recombinant caspases. Four different recombinant caspases were induced and purified: 6xHis-Dronc^{wt}, 6xHis-Dronc^{C318A}, 6xHis-Drice^{wt} and 6xHis-Drice^{C211A}. The purified caspases were run by SDS-PAGE, immunoblotted and the blot was probed with an anti-His antibody (diluted 1:5,000; followed by anti-mouse IgG, HRP-linked antibody (1:10,000)). Unprocessed 6xHis-Dronc (proDronc) runs at a relative molecular weight (MW_r) of 55 kDa (lane 2), unprocessed 6xHis-Drice (proDrice) has a MW_r of 35 kDa (lane 4). Auto-processing of the caspases is visible by the appearance of bands of smaller MW_r which due to the presence of the His-tag at the N-terminus represent the large subunits of the caspases (Figure 1). In the case of 6x-Dronc, the large subunit has a MW_r of 40 kDa (lane 1). The large subunit of 6x-Drice runs at 23 kDa (lane 3). The catalytic mutants 6xHis-Dronc^{C318A} and 6xHis-Drice^{C211A} fail to auto-process and are only detectable as full-length proteins (lanes 2 and 4).

Figure 2B. To demonstrate that the bacterially-produced and purified 6xHis-Dronc^{wt} preparation has enzymatic activity, an *in vitro* cleavage assay as described in this protocol was performed. As negative control, the catalytic mutant 6xHis-Dronc^{C318A} was used. The substrate was RRL-generated N-Myc-Drice^{C211A} which is tagged with a Myc-tag at the N-terminus. After the *in vitro* cleavage reaction, the proteins were separated by SDS-PAGE, immunoblotted and the blots were incubated with an anti-Myc antibody (diluted 1:1,000); followed by anti-mouse IgG, HRP-linked antibody (1:10,000) to detect N-Myc-Drice^{C211A}.

Successful cleavage and thus enzymatic activity of the caspase can be demonstrated by the appearance of at least one band of smaller MW_r compared to the full-length, unprocessed form of the substrate. Unprocessed, full-length N-Myc-Drice^{C211A} has a MW_r of 40 kDa (lanes 2 and 4), whereas the large subunit of processed N-Myc-Drice^{C211A} runs at 30 kDa (lane 3). Lane 1 represents the unprogrammed RRL lysate (no plasmid/transcript added). Lane 2 demonstrates *in vitro* production of Drice^{C211A} by RRL expression. Lane 3 contains the *in vitro* cleavage reaction with 6xHis-Dronc^{wt}. Lane 4 contains the *in vitro* cleavage reaction with 6xHis-Dronc^{C318A}.

Figure 2C. An *in vitro* cleavage reaction that uses both recombinant and purified caspase (6xHis-Dronc^{wt} and 6x-His-Dronc^{C318A}) and substrate (6xHis-Drice^{C211A}) according to this protocol, was analyzed by SDS-PAGE and immunoblot. For analysis of the cleavage reaction, the anti-cleaved Drice antibody (diluted 1:5,000; followed by anti-rabbit IgG, HRP-linked antibody (1:10,000)) was used in this immunoblot. The anti-cleaved Drice antibody detects its neo-epitope in the large subunit (23 kDa) of 6xHis-Drice^{C211A} only after processing by 6xHis-Dronc^{wt} (lane 1). The catalytic mutant 6xHis-Dronc^{C318A} is unable to process 6xHis-Drice^{C211A} in this assay and full-length 6xHis-Drice^{C211A} appears as faint unprocessed band of 35 kDa (lane 2).

DISCUSSION:

The bulk of our knowledge about caspases and caspase function has been derived from intense work in apoptosis during the last three decades. It is very well established that initiator caspases proteolytically process effector caspases, and hundreds of proteins have been identified as effector caspase substrates during apoptosis^{5,29}. In contrast, much less is known about the function of caspases for non-apoptotic processes and which non-apoptotic substrates they are processing. It is conceivable that initiator caspases are key decision makers here. During apoptosis, they activate effector caspases causing cell death. However, to trigger non-apoptotic processes, they may activate different proteins (other than effector caspases) which control the non-apoptotic process. This protocol tests candidate proteins as substrates of the initiator caspase Dronc in *Drosophila*^{17,30}.

The substrates to be tested in the cleavage assay can be produced either in an *in vitro* mammalian cell-free expression system such as RRL or by recombinant expression in *E.coli*. There are several advantages for *in vitro* expression using RRL over bacterial expression. The RRL expression protocol is simple and fast, allowing many different substrates to be prepared in parallel. In many cases, the RRL extract containing the protein of interest can be stored at $-80\text{ }^{\circ}\text{C}$ before use in the cleavage assay (although this needs to be determined separately for each substrate). The putative substrate can be labeled with S^{35} -Met which allows easy analysis by autoradiography after SDS-PAGE. That is particularly useful, if no substrate-specific antibody is available. Alternatively, if S^{35} -Met labeling is not desired, the putative substrate can be tagged with common tags such as Flag, HA or Myc tags which allows detection of caspase cleavage by immunoblotting.

It needs to be strongly emphasized that the success of this protocol depends on the careful and consistent purification of the recombinant Dronc and Drice proteins. Unfortunately,

these proteins cannot be stored – not even short-term - neither in the fridge nor frozen. They lose enzymatic activity overnight in any stored form. Therefore, they need to be prepared freshly on the day of the cleavage assay. Regardless of the candidate protein(s) being tested, Drice^{C211A} should always be used as a positive control to validate the enzymatic activity of the Dronc^{wt} preparation (see Figure 2B, C). Alternatively, the activity of the Dronc and Drice preparations can also be tested by *in vitro* cleavage of fluorogenic synthetic tetrapeptide substrates^{2,9,31}.

If antibodies are used to detect the candidate substrates, they need to be validated by the user^{32,33}. That applies also to commercially available antibodies that detect epitope tags such as Flag, HA, Myc or others. Poor antibody quality can obscure important results. Double-epitope-tagging of the candidate substrates on both the N- and C-terminus with different tags is also recommended³⁴. If cleavage occurs, double tagging helps to trace both cleavage products and may help to elucidate if cleavage occurs at one or more sites.

While this protocol easily validates the known biological substrate of Dronc, Drice, there are also limitations. One limitation is that this is an *in vitro* protocol with recombinant proteins. In these assays, the caspases are present at an unphysiologically high concentration which is evident from the observation that they can spontaneously auto-process in *E.coli*. The spontaneous auto-processing usually does not occur under physiological conditions. This high caspase concentration may cause spurious activity resulting in false positives. False positives can be eliminated by lowering the caspase concentration in the *in vitro* cleavage reaction. Furthermore, as outlined in more detail below, additional assays are necessary to confirm genuine substrates and to eliminate false positives.

The recombinant caspases may not have the same specificity as they have in their normal cellular environment *in vivo*. For example, the activity of caspases can be modified by post-translational modifications. These are not present on recombinant proteins. Furthermore, *in vivo*, initiator caspases including Dronc are incorporated into large protein complexes such as the apoptosome. Under the conditions of this protocol, formation of the apoptosome is not achieved. That would require recombinant expression of *Drosophila* Apaf-1 (aka Dark or Hac-1)^{35–37} which has challenges of its own. Therefore, *in vitro*, Dronc may not have the same specificity that it has *in vivo*.

It is also conceivable that Dronc is incorporated into a different protein complex for non-apoptotic processes. This may confer a different cleavage specificity to Dronc which could also explain why Dronc does not induce apoptosis under non-apoptotic conditions. Related to this, CasCleave uses the known cleavage consensus sites to predict new caspase substrates. However, it is unknown if the same cleavage consensus sites are also used for non-apoptotic processes. In fact, recently it was shown that Caspase-3 changes its preferred consensus site during a non-apoptotic process in the developing auditory brainstem in the chick embryo³⁸. Likewise, if initiator caspases are incorporated into different protein complexes, they may have a different specificity and thus may cleave at different consensus sequences.

These limitations illustrate that it is not sufficient to solely rely on the *in vitro* cleavage assays described in this protocol. Alternative approaches should be employed to further validate the results obtained using this protocol. Ideally, *in vivo* assays should be used to address the following questions: Is the candidate protein proteolytically processed during the non-apoptotic process *in vivo*? If so, is the same cleavage site used *in vivo* and *in vitro*? What is the consequence if the cleavage is blocked by mutagenesis of the cleavage site? Is the processing of the candidate substrate dependent on caspases, and if so, which one? What is the role of the cleavage fragments for the non-apoptotic process? These questions can be easily addressed in genetic model organisms such as *C.elegans* and *Drosophila* using standard genetic and transgenic methods.

In summary, this protocol describes a reliable and consistent method to produce enzymatically active caspases, specifically the *Drosophila* caspases Dronc and Drice. The ultimate goal of this protocol is to examine if Dronc can cleave candidate substrates *in vitro* which were identified by genetic, biochemical or bioinformatics approaches. As explained in the previous paragraph, additional assays are required to validate these proteins as caspase substrates *in vivo*. Given the degree of conservation of caspase genes across metazoa, it should be possible to adapt this protocol to caspases from other organisms as well.

Supplementary Material

Refer to Web version on PubMed Central for supplementary material.

ACKNOWLEDGMENTS:

We would like to thank Dr. Elif Kamber-Kaya for her help to establish the protocol in the lab. Dr. Guy Salvesen kindly provided the Drice^{C211A} mutant⁹. This work was funded by a MIRA award from the National Institute of General Medical Sciences (NIGMS) of the National Institutes of Health (NIH) under grant number 2R35GM118330. The funders had no role in study design, data collection and analysis, decision to publish, or preparation of the manuscript.

REFERENCES:

1. Kumar S Caspase function in programmed cell death. *Cell Death and Differentiation*. 14 (1), 32–43, (2007). [PubMed: 17082813]
2. Hawkins CJ et al. The *Drosophila* caspase DRONC cleaves following glutamate or aspartate and is regulated by DIAP1, HID, and GRIM. *Journal of Biological Chemistry*. 275 (35), 27084–27093, (2000). [PubMed: 10825159]
3. Li P et al. Cytochrome c and dATP-dependent formation of Apaf-1/caspase-9 complex initiates an apoptotic protease cascade. *Cell*. 91 (4), 479–489, (1997). [PubMed: 9390557]
4. Meier P, Silke J, Leever SJ, Evan GI The *Drosophila* caspase DRONC is regulated by DIAP1. *EMBO Journal*. 19 (4), 598–611, (2000). [PubMed: 10675329]
5. Timmer JC, Salvesen GS Caspase substrates. *Cell Death and Differentiation*. 14 (1), 66–72, (2007). [PubMed: 17082814]
6. Zou H, Li Y, Liu X, Wang X An APAF-1.cytochrome c multimeric complex is a functional apoptosome that activates procaspase-9. *Journal of Biological Chemistry*. 274 (17), 11549–11556, (1999). [PubMed: 10206961]
7. Zou H, Henzel WJ, Liu X, Lutschg A, Wang X Apaf-1, a human protein homologous to *C. elegans* CED-4, participates in cytochrome c-dependent activation of caspase-3. *Cell*. 90 (3), 405–413, (1997). [PubMed: 9267021]

8. Stennicke HR et al. Caspase-9 can be activated without proteolytic processing. *Journal of Biological Chemistry*. 274 (13), 8359–8362, (1999). [PubMed: 10085063]
9. Snipas SJ, Drag M, Stennicke HR, Salvesen GS Activation mechanism and substrate specificity of the *Drosophila* initiator caspase DRONC. *Cell Death and Differentiation*. 15 (5), 938–945, (2008). [PubMed: 18309328]
10. Fraser AG, Evan GI Identification of a *Drosophila melanogaster* ICE/CED-3-related protease, drICE. *EMBO Journal*. 16 (10), 2805–2813, (1997). [PubMed: 9184225]
11. Denton D, Mills K, Kumar S Methods and protocols for studying cell death in *Drosophila*. *Methods in Enzymology*. 446 17–37, (2008). [PubMed: 18603114]
12. Dorstyn L, Kumar S A biochemical analysis of the activation of the *Drosophila* caspase DRONC. *Cell Death and Differentiation*. 15 (3), 461–470, (2008). [PubMed: 18084239]
13. Aram L, Yacobi-Sharon K, Arama E CDPs: caspase-dependent non-lethal cellular processes. *Cell Death and Differentiation*. 24 (8), 1307–1310, (2017). [PubMed: 28695898]
14. Arama E, Baena-Lopez LA, Fearnhead HO Non-lethal message from the Holy Land: The first international conference on nonapoptotic roles of apoptotic proteins. *FEBS Journal*. 288 (7), 2166–2183, (2021). [PubMed: 32885609]
15. Baena-Lopez LA All about the caspase-dependent functions without cell death. *Seminars in Cell and Developmental Biology*. 82 77–78, (2018). [PubMed: 29339195]
16. Florentin A, Arama E Caspase levels and execution efficiencies determine the apoptotic potential of the cell. *Journal of Cell Biology*. 196 (4), 513–527, (2012). [PubMed: 22351928]
17. Amcheslavsky A et al. Plasma Membrane Localization of Apoptotic Caspases for Non-apoptotic Functions. *Developmental Cell*. 45 (4), 450–464 e453, (2018). [PubMed: 29787709]
18. Bergmann A Are membranes non-apoptotic compartments for apoptotic caspases? *Oncotarget*. 9 (60), 31566–31567, (2018). [PubMed: 30167077]
19. Song J et al. Cascleave: towards more accurate prediction of caspase substrate cleavage sites. *Bioinformatics*. 26 (6), 752–760, (2010). [PubMed: 20130033]
20. Wang M et al. Cascleave 2.0, a new approach for predicting caspase and granzyme cleavage targets. *Bioinformatics*. 30 (1), 71–80, (2014). [PubMed: 24149049]
21. Kamber Kaya HE, Ditzel M, Meier P, Bergmann A An inhibitory mono-ubiquitylation of the *Drosophila* initiator caspase Dronc functions in both apoptotic and non-apoptotic pathways. *PLoS Genetics*. 13 (2), e1006438, (2017). [PubMed: 28207763]
22. Stennicke HR, Salvesen GS Caspases: preparation and characterization. *Methods*. 17 (4), 313–319, (1999). [PubMed: 10196102]
23. Green MR, Sambrook J *Molecular Cloning: A Laboratory Manual* (4th edition). (Cold Spring Harbor, NY: Cold Spring Harbor Laboratory Press, 2012).
24. Froger A, Hall JE Transformation of plasmid DNA into *E. coli* using the heat shock method. *Journal of Visualized Experiments*. 10.3791/253 (6), 253, (2007). [PubMed: 18997900]
25. Bradford MM A rapid and sensitive method for the quantitation of microgram quantities of protein utilizing the principle of protein-dye binding. *Analytical Biochemistry*. 72 248–254, (1976). [PubMed: 942051]
26. Brunelle JL, Green R Coomassie blue staining. *Methods in Enzymology*. 541 161–167, (2014). [PubMed: 24674070]
27. Hirano S Western blot analysis. *Methods in Molecular Biology*. 926 87–97, (2012). [PubMed: 22975958]
28. Kim B Western Blot Techniques. *Methods in Molecular Biology*. 1606 133–139, (2017). [PubMed: 28501998]
29. Luthi AU, Martin SJ The CASBAH: a searchable database of caspase substrates. *Cell Death and Differentiation*. 14 (4), 641–650, (2007). [PubMed: 17273173]
30. Fogarty CE et al. Extracellular Reactive Oxygen Species Drive Apoptosis-Induced Proliferation via *Drosophila* Macrophages. *Current Biology*. 26 (5), 575–584, (2016). [PubMed: 26898463]
31. Song Z et al. Biochemical and genetic interactions between *Drosophila* caspases and the proapoptotic genes *rpr*, *hid*, and *grim*. *Molecular and Cellular Biology*. 20 (8), 2907–2914, (2000). [PubMed: 10733594]

32. Edfors F et al. Enhanced validation of antibodies for research applications. *Nature Communications*. 9 (1), 4130, (2018).
33. Uhlen M et al. A proposal for validation of antibodies. *Nature Methods*. 13 (10), 823–827, (2016). [PubMed: 27595404]
34. Brizzard B Epitope tagging. *Biotechniques*. 44 (5), 693–695, (2008). [PubMed: 18474046]
35. Kanuka H et al. Control of the cell death pathway by Dapaf-1, a *Drosophila* Apaf-1/CED-4-related caspase activator. *Molecular Cell*. 4 (5), 757–769, (1999). [PubMed: 10619023]
36. Rodriguez A et al. Dark is a *Drosophila* homologue of Apaf-1/CED-4 and functions in an evolutionarily conserved death pathway. *Nature Cell Biology*. 1 (5), 272–279, (1999). [PubMed: 10559939]
37. Zhou L, Song Z, Tittel J, Steller H HAC-1, a *Drosophila* homolog of APAF-1 and CED-4 functions in developmental and radiation-induced apoptosis. *Molecular Cell*. 4 (5), 745–755, (1999). [PubMed: 10619022]
38. Weghorst F, Mirzakhanyan Y, Hernandez KL, Gershon PD, Cramer KS Non-Apoptotic Caspase Activity Preferentially Targets a Novel Consensus Sequence Associated With Cytoskeletal Proteins in the Developing Auditory Brainstem. *Frontiers in Cell and Developmental Biology*. 10 844844, (2022). [PubMed: 35330912]

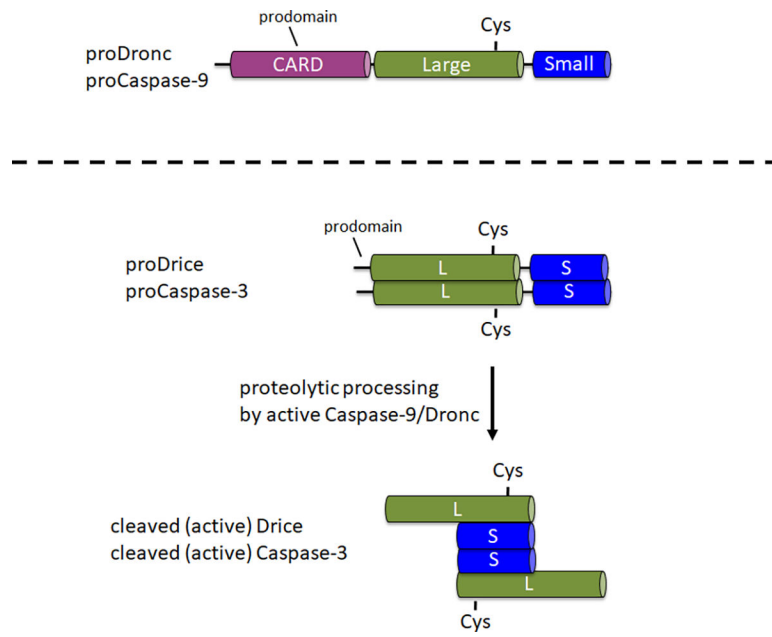


Figure 1: Domain structure of initiator caspases Caspase-9 and Dronc and effector caspases Caspase-3 and Drice.

CARD – caspase activation and recruitment domain; Cys - relative location of the catalytic Cysteine residue; L – large subunit; S – small subunit. The location of the N-terminal prodomains is indicated.

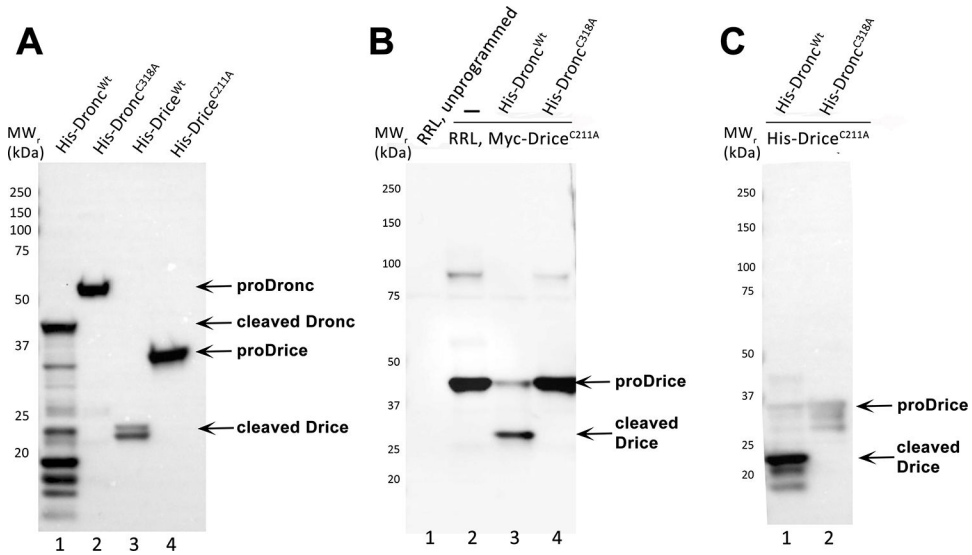


Figure 2. Representative results.

(A) Immunoblot analysis of purified recombinant 6xHis-Dronc and 6xHis-Drice preparations, probed with an anti-His antibody. Unprocessed (proDronc and proDrice) and cleaved 6xHis-Dronc and 6xHis-Drice are indicated by arrows. MW markers are indicated on the left.

(B) Immunoblot analysis of the *in vitro* cleavage reaction of RRL-generated N-Myc-Drice with caspases 6xHis-Dronc^{wt} (lane 3) or 6xHis-Dronc^{C318A} (lane 4) probed with an anti-Myc antibody. Unprogrammed and programmed (N-Myc-Drice^{C211A}) RRL extracts are loaded and separated in lanes 1 and 2. Unprocessed (proDrice) and cleaved N-Myc-Drice are indicated by arrows. MW markers are indicated on the left.

(C) Immunoblot analysis of the *in vitro* cleavage reaction of bacterially expressed and purified recombinant 6xHis-Drice^{C211A} with caspases 6xHis-Dronc^{wt} (lane 1) or 6xHis-Dronc^{C318A} (lane 2), probed with an anti-cleaved Drice antibody. Full-length (proDrice) and cleaved 6xHis-Drice^{C211A} are indicated by arrows. MW markers are indicated on the left.

Name of Material/Equipment	Company	Catalog Number	Comments/Description
14 ml Polypropylene round bottom tubes	Fisher Scientific	352029	For growing plasmid cultures
1 ml Serological Pipets, Sterile	celltreat	229001B	For bacterial cell lysis in 50 ml tubes
Ampicillin	Fisher	BP1760–25	
Anti-His antibody	Sigma-Aldrich	MA1–21315	
Anti-mouse IgG, HRP-linked Antibody	Cell signaling	7076P2	
Anti-Myc antibody	Santa Cruz Biotechnology	sc-40	
Anti-rabbit IgG, HRP-linked Antibody	Cell signaling	7074P2	
Benchtop Centrifuge	Eppendorf	5415 R	
Benzonase	Sigma-Aldrich	E1014–5KU	
BioPhotometer	Eppendorf	#6131	
BL21(DE3)pLysS Competent Cells	Promega	L1195	
Centrifuge rotor	Beckman Coulter	JA-25.50	
CHAPS	Sigma-Aldrich	C3023–1G	
ChemiDoc with image software	Bio-Rad	Universal Hood II	For Chemiluminescence imaging
Chemiluminescence Substrate	ThermoFisher Scientific	34095	For Chemiluminescence imaging
Cleaved Drosophila ICE (drICE) (Asp230) Antibody	Cell Signaling Technology	9478S	
Disposable cuvettes	Fisher Scientific	14955128	Used to measure bacterial growth and protein concentration
Dithiothreitol (DTT)	Bio-Rad	#1610610	
Erlenmeyer flasks, 1000 ml	Millipore sigma	CLS49801L	For LB agar media preparation and autoclaving
Erlenmeyer flasks, 250 ml	Millipore sigma	CLS4980250	For bacterial culture growth and induction
Ethylene-diamine-tetra-acetic Acid (EDTA)	Sigma-Aldrich	E5134	
Gel extraction kit	Qiagen	28704	
Gel tank SDS-PAGE system	ThermoFisher Scientific	STM1001	
Glycine	Sigma-Aldrich	G8898	
Halt Protease Inhibitor Cocktail (100X)	ThermoFisher scientific	87786	
HEPES	Sigma-Aldrich	H3375	
His-Drice-pet28a	this study	N/A	Available from authors
His-DriceC211A-pet28a	this study	N/A	Available from authors
His-Dronc-pet28a	this study	N/A	Available from authors
His-DroncC318A-pet28a	this study	N/A	Available from authors
Imidazole	Sigma-Aldrich	I2399–100G	
Isopropyl-β-D-thiogalactopyranoside (IPTG)	ThermoFisher Scientific	FERR0392	
Kanamycin	Fisher Scientific	BP906–5	

Name of Material/Equipment	Company	Catalog Number	Comments/Description
LB Agar, Miller (Powder)	Fisher Scientific	BP1425-500	
LB Broth, Miller	Fisher Scientific	BP1426-500	
Lysozyme	ThermoFisher Scientific	90082	
Microbiological plate incubator	Fisher Scientific	11-690-650D	For colony growth after transformation
Microcentrifuge tubes, 0.5mL	Eppendorf	22363611	
Microcentrifuge tubes, 1.5mL	Eppendorf	22363204	
Midiprep kit	Qiagen	12243	
Mini tube rotator	Fisher Scientific	05-450-127	for mixing bacterial lysates and Ni-NTA agarose
Miniprep kit	Qiagen	27106	
Motorized Pipette Controller	Gilson	F110120	For using serological pipettes
NaH ₂ PO ₄	Fisher Scientific	BP330-1	
Ni-NTA Agarose	Qiagen	30210	
NuPAGE 4 to 12%, Bis-Tris, 1.0 mm, Midi Protein Gel, 20-well	ThermoFisher Scientific	WG1402BOX	
NuPAGE LDS Sample Buffer (4X)	ThermoFisher Scientific	NP0007	
NuPAGE MOPS SDS Running Buffer (20X)	ThermoFisher Scientific	NP0001	
NuPAGE Transfer Buffer (20X)	Invitrogen	NP00061	
Orbital shaking incubator with temperature control	New Brunswick Scientific	C25 incubator shaker	
Petridish 100mm × 15mm	Fisher Scientific	FB0875712	
Plating beads	Zymo research	S1001	For spreading culture on AmpR/KanR plates
Polypropylene Columns (1 ml)	Qiagen	34924	For purification of His-tagged proteins
Precision Plus Protein Standards	Bio-Rad	#161-0374	
Protein Assay Dye Reagent Concentrate	Bio-Rad	#5000006	
pT7CFE1-NMyc	ThermoFisher Scientific	88863	For cloning substrates for RRL expression
PVDF membrane	Invitrogen	LC2007	
QiaRack	Qiagen	19095	For holding polypropylene columns during purification
Refrigerated High speed Centrifuge	Beckman Coulter	Avanti J-25	
rRNasin Ribonuclease Inhibitor	Promega	N251A	For RRL expression
Sodium chloride	Fisher Scientific	BP358-212	
Sodium Hydroxide	Fisher Scientific	BP359-500	
Sterile Falcon tubes, 15mL	Fisher Scientific	05-527-90	
Sterile Falcon tubes, 50ml	Fisher Scientific	14-959-49A	
Sucrose	Sigma-Aldrich	S70903-250G	
TnT Coupled Reticulocyte Lysate -T7	Promega	L4611	

Name of Material/Equipment	Company	Catalog Number	Comments/Description
Tris-base	Fisher Scientific	BP154-1	
Tween 20	Sigma-Aldrich	P1379	
Waterbath	Fisher Scientific	2340	
Western wet transferring cassette	Thermofisher Scientific	STM2001	

Author Manuscript

Author Manuscript

Author Manuscript

Author Manuscript