

Research



Cite this article: Sheard C, Street SE, Evans C, Lala KN, Healy SD, Sugasawa S. 2023 Beak shape and nest material use in birds. *Phil. Trans. R. Soc. B* **378**: 20220147. <https://doi.org/10.1098/rstb.2022.0147>

Received: 16 December 2022
Accepted: 6 March 2023

One contribution of 20 to a theme issue ‘The evolutionary ecology of nests: a cross-taxon approach’.

Subject Areas:
evolution

Keywords:
object manipulation, form-function
coevolution, bird nests, morphology,
construction, behaviour

Authors for correspondence:
Catherine Sheard
e-mail: catherine.sheard@bristol.ac.uk
Shoko Sugasawa
e-mail: ss244@st-andrews.ac.uk

[†]Formerly Kevin N. Laland.

Electronic supplementary material is available online at <https://doi.org/10.6084/m9.figshare.c.6677602>.

Beak shape and nest material use in birds

Catherine Sheard¹, Sally E. Street², Caitlin Evans³, Kevin N. Lala^{3,†}, Susan D. Healy³ and Shoko Sugasawa³

¹School of Earth Sciences, University of Bristol, Life Sciences Building, 24 Tyndall Avenue, Bristol BS8 1TQ, UK
²Department of Anthropology, Durham University, Dawson Building, South Road, Durham DH1 3LE, UK
³School of Biology, University of St Andrews, Harold Mitchell Building, St Andrews KY16 9TJ, UK

CS, 0000-0002-8259-1275; SES, 0000-0001-8939-8016; CE, 0000-0001-7978-7966

The evolution of behaviour can both influence, and be influenced by, morphology. Recent advances in methods and data availability have facilitated broad-scale investigations of physical form and behavioural function in many contexts, but the relationship between animal morphology and object manipulation—particularly objects used in construction—remains largely unknown. Here, we employ a new global database of nest materials used by 5924 species of birds together with phylogenetically informed random forest models to evaluate the link between beak shape and these nest-building materials. We find that beak morphology, together with species diet and access to materials, can predict nest-material use above chance and with high accuracy (68–97%). Much of this relationship, however, is driven by phylogenetic signal and sampling biases. We therefore conclude that while variation in nest material use is linked with that of beak shape across bird species, these correlations are modulated by the ecological context and evolutionary history of these species.

This article is part of the theme issue ‘The evolutionary ecology of nests: a cross-taxon approach’.

1. Introduction

The ability to manipulate objects can have significant evolutionary consequences, as animals can gain substantial fitness from successful object manipulation during foraging, transport or construction [1,2]. Indeed, skilled forelimb movements, including object manipulation, appear to have been acquired early in the tetrapod lineage [3,4], and the ability of primate hands to manipulate objects is considered a key innovation in that clade’s evolutionary history [3,5,6]. For example, efficient tool-making capacity is linked to specific morphological characteristics in hands, such as broad fingertips or enlarged muscles in the thumb and little finger [7,8]. The evolutionary effects of these innovations, however, are confounded by multiple other selection pressures acting on limbs, including locomotion, and studying this phenomenon is hindered by the lack of standard behavioural descriptions that could be analysed in a comparative context [4]. Furthermore, far less is known about the evolutionary causes and consequences of object manipulation in animals that lack hands or paws, despite diverse examples of animals manipulating objects using other body parts such as mouths and fins [1,9].

Avian nest building provides a particularly useful example of construction behaviour without hands. Most (but not all) of the roughly 10 000 extant species of birds build nests, and there is considerable diversity in the structure of, and material used in, nests. Across bird species, nest structures range from simple scrapes on the ground to excavated cavities to elaborate, multi-chambered constructs [10,11], and the materials used to build nests include mud, grass, twigs, feathers, and artificial materials such as plastic [12–15]. The chief appendage birds use to build these nests is their beak, although some birds additionally use their body and feet [16,17]. An extensive body of literature

spanning Darwin's descriptions of Galapagos finches [18] to modern phylogenetic studies has examined the link between interspecific variation in beak shape and diet [19–21], foraging strategy [19], song [22,23] and the environment [24,25]. The extent to which beak morphology correlates with species-level differences in nest-building materials, however, is currently unknown, beyond speculation that there is little to no relationship between the two [26]. This is surprising, given that nest building is crucial to an individual's reproductive success, with the interaction between a beak and nest materials key to forming the resulting structure of the nest [27]. Moreover, while behaviours such as nest-material selection have been widely assumed to be a particularly plastic and evolvable trait (e.g. [28]), beak shape is also highly evolvable [29,30], suggesting that these two traits may potentially coevolve.

Recent comparative work has begun to examine broad-scale correlates of the interspecific variation in nest structure (e.g. [31]), site (e.g. [32]), and size (e.g. [33]), but little is known about the evolutionary sources of interspecific variation in nest-material use itself. We here attempt to determine if the extensive species-level diversity in avian beak morphology can be linked to the wide variation in nest-material use, using flexible machine-learning algorithms known as random forest models. As beaks are 'multi-purpose organs' [26] that are used for many different tasks beyond nest building, such as foraging, we anticipate that any potential form-function correlations are modulated to some extent by ecological variables. We first present a new database of nest materials for 5924 species of birds from 38 of 40 orders and 180 of 194 families. We then combine this data on nest materials with beak traits from AVONET [34], as well as information about species diet and proxies for material availability, to evaluate the associations between beak morphology and nest-material use across the class. We also distinguish between species that use a single type of material (nest-material specialists) and species that use multiple types of material (nest-material generalists). Finally, we use simulations to control for the shared evolutionary history between related species (phylogenetic signal) and for sampling biases.

2. Material and methods

(a) Data collection

Descriptions of nest materials were collated from the *Handbook of the Birds of the World Alive* (2017–2018), *Neotropical Birds Online* (2019–2020) and the *Birds of North America Online* (2019–2020), all of which sources have subsequently been combined into a single publication, the *Birds of the World* [35]. Each nest material used by each species was then scored as belonging to one of seven categories: binder (e.g. mud, sand, saliva, peat, droppings), fibre (e.g. feathers, fur, hair, plant down, moss, fern, fungi, root-lets), filamentous grass-like material (here termed 'grass', including stems, grassy vines, Spanish moss, seaweed, kelp, algae), leaf, mineral (e.g. shell, bones, pebble), silk or twig (e.g. wood, root, bark, liana, woody vines, heather). For each species, we also recorded what we term the 'primary' material from these seven categories, here defined as either the material category indicated in-text as the most commonly used; the only category reported; or, in absence of any other information, the category of the first material listed (following Wilman *et al.* [36] and Pigot *et al.* [19]). Species with different primary materials depending on the source consulted were considered 'mixed'.

We omitted from analysis species lacking data on material use, those that do not build nests, and those with ambiguous descriptions of material type (e.g. owing to scorer uncertainty when identifying materials from images, owing to contradictory information within a species entry, or owing to ambiguity between nest materials and substrate), leaving a total of 5924 species out of 9993 species with phylogenetic information (figure 1).

To capture key dimensions of beak size and shape, four linear morphological measurements were obtained from AVONET [34]: total bill length, bill length from the nares, bill width at the nares, and bill depth at the nares. Although these traits are intercorrelated (as well as correlated with other ecological variables included in these models), we left each variable untransformed in order to improve ecological interpretability. We also included the AVONET body mass measurement, to control for beak shape allometry as well as in part for the known correlations between body mass and life history.

To represent species diet, we used the three AVONET variables 'trophic level' (carnivore, herbivore, scavenger, or omnivore), 'trophic niche' (one of 10 dietary categories, e.g. invertivore, frugivore, granivore) and primary lifestyle, here termed 'trophic lifestyle' for consistency (aerial, aquatic, generalist, insectivore, or terrestrial). As a proxy for access to materials (material access), we included three variables. First, we used two measures of habitat, one simple ('habitat density': dense, semi-open or open), and one complex (one of 11 categories, e.g. forest, desert, grassland). We assumed that different materials will be available in each of the different habitats listed. Second, we approximated material access using the AVONET variable of hand-wing index (HWI; a common proxy for flight ability, see [39]). We assumed that stronger long-distance fliers may have access to more types of material than short-distance fliers, and that different flight styles might face different predation pressures during the nest-building phase [40,41]. HWI is, however, also closely related to migratory behaviour, so to partition the flight ability variable from this relationship, we also included the AVONET variable of migration (sedentary, partially migratory, or migratory). Further details can be found in the electronic supplementary material, table S1.

(b) Random forest models

To assess the relationship between beak shape and nest material, we considered three different types of response variable. First, we considered each material category as a separate binary variable (i.e. either that species is or is not known to use that material). Second, we used the categorical trait 'primary material' (i.e. the material category assigned as the most commonly used by each species) as the response variable. Third, we ran a set of models with only material specialists, or species scored as building using only one category. These were similar in structure to the primary material models, but on a reduced dataset. For each model, we ran random forest models using the R package *randomForest* [42] in R v. 4.1.3 [43] using 5000 decision trees; random forest models were selected to account for the complex, nonlinear structure of the data [44] and generally follow the same basic analytic outline as in [19]. In brief, random forest models are a type of machine learning algorithm that use the input variables to create decision trees to predict a categorical classification. We first ran a naive set of models with only the beak morphology traits as predictor variables to establish a baseline estimate of the correlation between these two suites of traits. We then included all potential predictor variables—four measures of beak morphology, three measures of species diet, and four measures of material access—to address the central questions of this study. To provide an estimate of the strength of each predictor within these models, we then ran versions of each model with each predictor variable removed (marginal contribution) and versions of each model with only

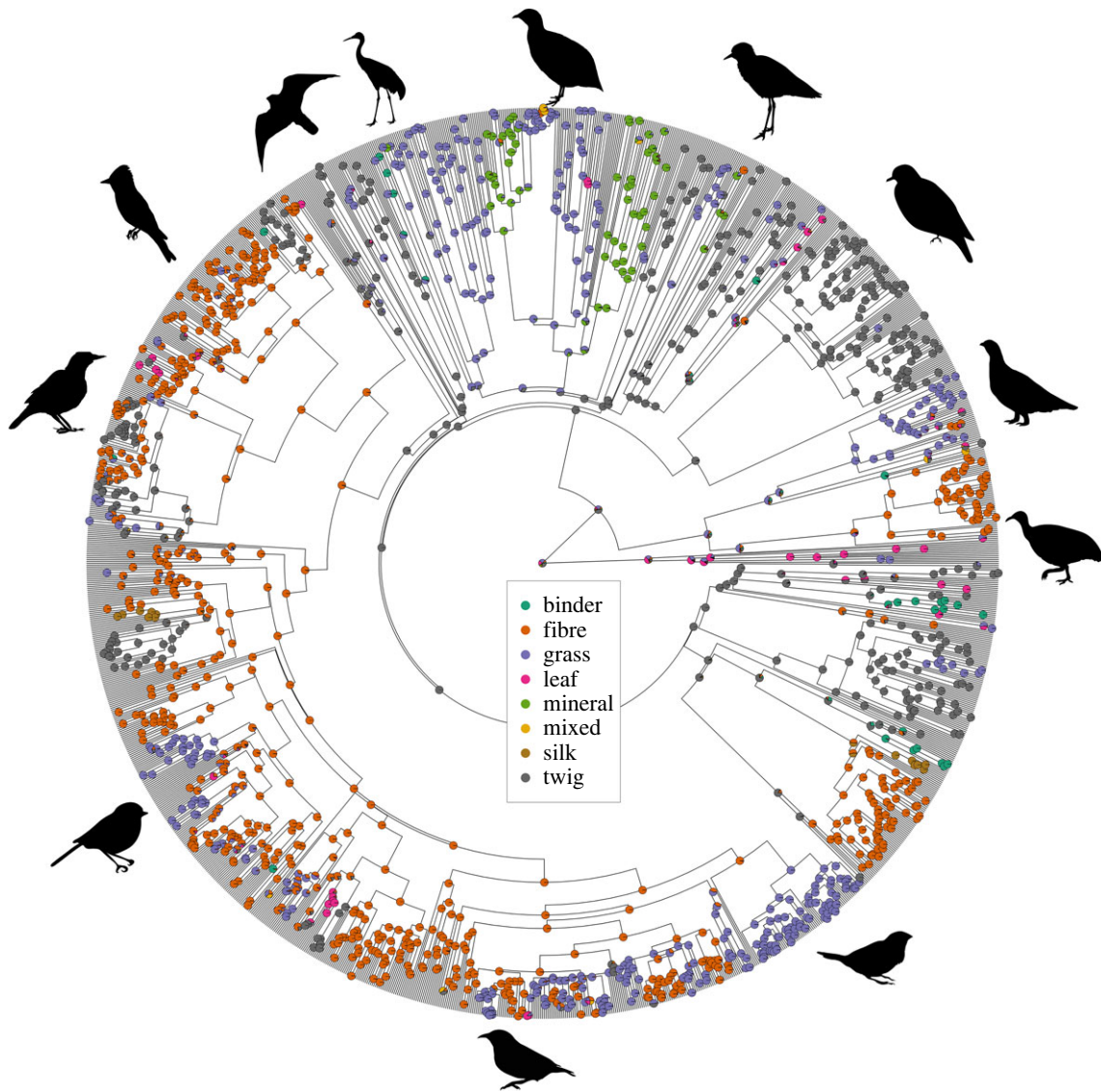


Figure 1. Phylogenetic distribution of material specialists. Shown for display purposes only is an arbitrary topology from the Global Bird Tree (Jetz *et al.* [37]) as well as an ancestral state reconstruction assuming equal transition rates calculated using the ‘ace’ function in the R package *ape* [38]. Illustrative silhouettes from phylopic.org indicate approximate phylogenetic positions; please see the electronic supplementary material for further information on image licensing.

one of each predictor variable included (independent contribution).

There are two major sources of bias in this modelling approach. The first is phylogenetic inertia: similarity in the response and predictor variables could be the result of shared evolutionary history rather than a true ecological relationship. To evaluate the effect of this phenomenon, for each of the six continuous and six discrete predictor variable in our models (see the electronic supplementary material, table S1), we first generated simulated data using 100 topologies randomly selected from the Hackett backbone of the Global Bird Tree [37] and realistic Brownian motion parameters, calculated with the ‘fit-Continuous’ and ‘sim.char’ commands in the R package *geiger* [45]. We then re-ran the random forest models on these simulated datasets. A prediction success rate on the simulated data that is close to that of the observed data would indicate high phylogenetic signal in this modelling approach; a low prediction success rate on the simulated data would indicate that shared evolutionary history is playing little role in driving the observed ecological correlations. Further information on the phylogenetic simulations can be found in the electronic supplementary material.

The second source of bias is the asymmetry of the data: some material categories occur more frequently than others, and thus a

model could be achieving apparent success by simply guessing the common categories and ignoring the rare ones. To evaluate the extent to which this strategy may be driving the reported model results, for each model we also present the predictive power of a ‘downsampled’ version, where species from more frequent response categories are omitted from the model at random until an equal number of species remain for each category. The results we present are the median from 100 such downsampling attempts. In this case, a prediction success rate within the downsampled data close to that of the observed data would indicate that the frequency of the materials plays little role in the model outcome.

To improve reproducibility in the simulations, all models are preceded by a ‘set.seed’ function, but all such six-digit seeds were generated randomly.

(c) Phylogenetic generalized linear models

To provide phylogenetically corrected estimates of the relationships between nest-material use and the 12 morphological and ecological variables considered here, we also ran a set of phylogenetic generalized linear models (GLMs) using the function ‘*phylglm*’ in the package *phylolm* [46]. These GLMs could only be used for binary response variables (as opposed to the random forest models, which provide comparable structures

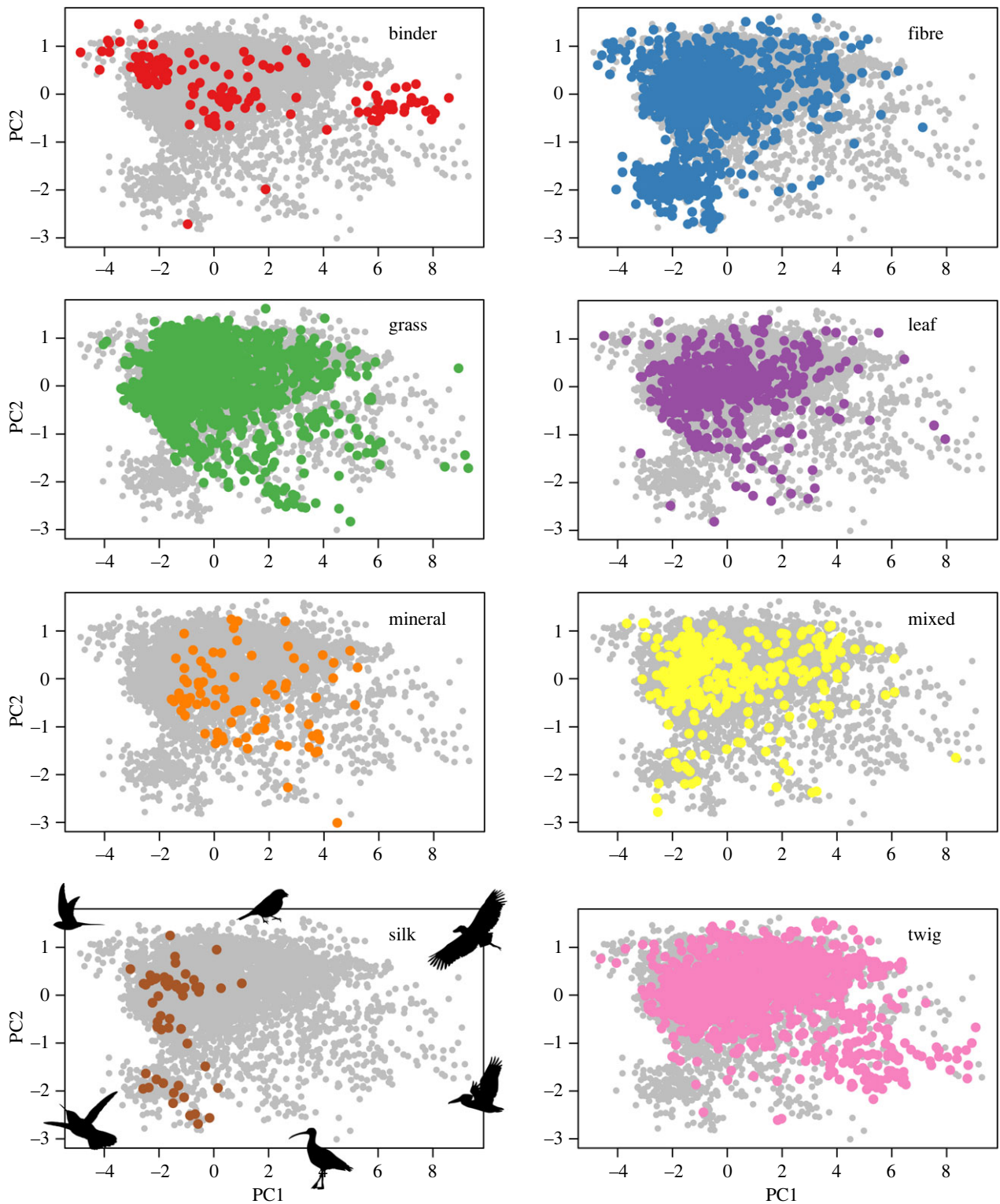


Figure 2. Partitioning of beak morphospace by primary nest material. Within each panel, coloured dots denote species with the listed primary nest material; grey dots denote all other species. Axes represent the first (x -axis) and second (y -axis) principal component of a morphospace formed of the four beak morphology variables and body size. PC1 is generally a measure of bill size, ranging from swiftlets (lowest) to storks and pelicans (highest); PC2 is a ratio of width/depth to length, ranging from the long-billed curlew (lowest) to wood-partridges and frogmouths (highest). Illustrative silhouettes from phylopic.org on the 'silk' panel indicate approximate morphospace positions; please see the electronic supplementary material for further information on image licensing.

for both binomial and multinomial responses), and unlike random forest models assumes a linear relationship within the logit link.

To reduce multicollinearity among the predictor variables, we first ran a principal components analysis on the four beak morphology variables together with body size using the function 'prcomp' (figure 2, where these traits are also included for visualization purposes) and included the first two variables

(principal component 1 (PC1), broadly interpretable as size; and principal component 2 (PC2), broadly interpretable as shape) in our models; we also ran model selection procedures to determine the models of best fit, based on Akaike information criterion (AIC) fit, with $\Delta AIC > 2$ considered statistically meaningful. All models were run on a consensus tree computed from the 100 topologies used in the phylogenetic simulations, using TREEANNOTATOR [47], and all continuous variables were

Table 1. Model predictive power of individual nest materials. (All models were run on a sample size of 5924 species. The models considered each material as a binary (i.e. either a species is known to use that material, or it is not) and used the 12 morphological and ecological variables to assign each species to a category. High model accuracy rates (close to 100) indicate models able to successfully predict nest-material use based on the species' morphological and ecological traits; low accuracy rates (close to 0) indicate low success. Phylogenetic simulation accuracy rates indicate success rates on simulated data; the higher this number, the more likely it is that shared evolutionary history is biasing these models. Downsampled predictive power indicates model accuracy results on subsamples with equal category sizes; in this column, values close to the overall accuracy rate indicate low levels of frequency bias.

material	sample size	accuracy rate	phylogenetic simulation accuracy rate	downsampled predictive power
binder	409	94.7	93.6	78.7
fibre	3989	79.3	76.2	73.9
grass	3661	72.3	68.3	70.2
leaf	2185	68.8	66.6	65.5
mineral	186	97.2	96.9	85.2
silk	991	85.5	84.6	79.2
twig	2776	71.5	66.4	70.9

scaled to have a mean of 0 and variance of 1 to improve coefficient interpretability.

3. Results

Random forest models indicate a link between beak morphology and nest-material use: the four beak shape variables, together with body mass, can correctly predict primary nest-material use in 48.4% of cases (rising to 59.8% when restricted to material specialists and with the ecologically meaningless 'mixed' category omitted), as well as individual material use from 63.8% of cases (leaf) to 96.8% of cases (mineral) (electronic supplementary material, table S2). The addition of alternative drivers and confounding ecological effects (i.e. measures of diet and material availability) further increase the predictive power of these models, with primary nest material correctly predicted 56.0% of the time (rising to 70.0% of the time within material specialists and with the 'mixed' category omitted; electronic supplementary material, table S2), and with individual material use correctly predicted between 68.8% of the time (leaf) and 97.2% of the time (mineral) (table 1).

Our main model considers the ability of beak morphology and the additional covariates controlling for species diet and access to material to correctly predict species-level primary material use, out of eight potential choices (figures 2 and 3; electronic supplementary material, tables S3–S4). This model was correct in 56.0% of cases and was most successful at predicting grass use (69.2% success) and least successful at silk use (0% success). Many categories were frequently mis-identified by the model as grass or fibre, suggesting a possible sampling bias, and both binder and leaves were further frequently mis-identified as twigs. Although the 'mixed' category, denoting species where the primary material scoring differed between sources, has little ecological meaning, removing it from the model only slightly improved accuracy to 59.7% (electronic supplementary material, figure S1, table S5).

Among specialists, random forest models were able to predict nest material 68.5% of the time (electronic supplementary material, figure S2, tables S6–S7), or 70% of the time with the 'mixed' category omitted (electronic supplementary material, figure S3, table S8). Within this sample, the

models were most successful at predicting fibre (82.2% success), although again least successful with silk (0% success).

These predictor variables are, however, inter-correlated, and thus extracting an independent correlation between a single variable and the model success is difficult. Across all species, HWI (a proxy for flight ability, [48,49]), body mass and habitat type had the largest independent contributions to models predicting primary nest material (electronic supplementary material, table S4), but said roles were relatively modest. Among nest-material specialists, the most independently informative variable was trophic lifestyle (i.e. whether a species was aerial, aquatic, generalist, insessorial or terrestrial; electronic supplementary material, table S7), although, again, this value represented a small marginal contribution. Models predicting specific material use indicate a somewhat larger independent contribution of body mass and HWI, though with generally low predictive values overall (electronic supplementary material, tables S9–S15); this probably reflects the high correlations among the other predictor variables, such as between the beak shape and dietary traits (e.g. [19,39] for more information on how these variables relate to one another).

While the direction and magnitude of these effects are difficult to assess because of the structure of the random forest models, in general, among the trophic lifestyles, aerial species use binder a disproportionate amount, while insessorial (perching) species disproportionately use fibre and terrestrial species disproportionately use grass (electronic supplementary material, figure S4). Species with high HWI (high flight ability) tend to use minerals and species with low HWI (low flight ability) tend to use leaves, with silk and binder use found in species with very broad ranges of flight ability (electronic supplementary material, figure S5). Species that use twig, binder or mineral as primary material also tended to be larger, while species that use silk as a primary material tend to be very small (electronic supplementary material, figure S6).

It is important to note, however, that there are two major sources of bias inherent in this modelling approach. Phylogenetic simulations suggest that 66.4–96.9% of interspecific variation in individual nest-material use (table 1), as well as 48.6% of variation in primary nest material (electronic supplementary material, table S4) and 56.6% of the variation

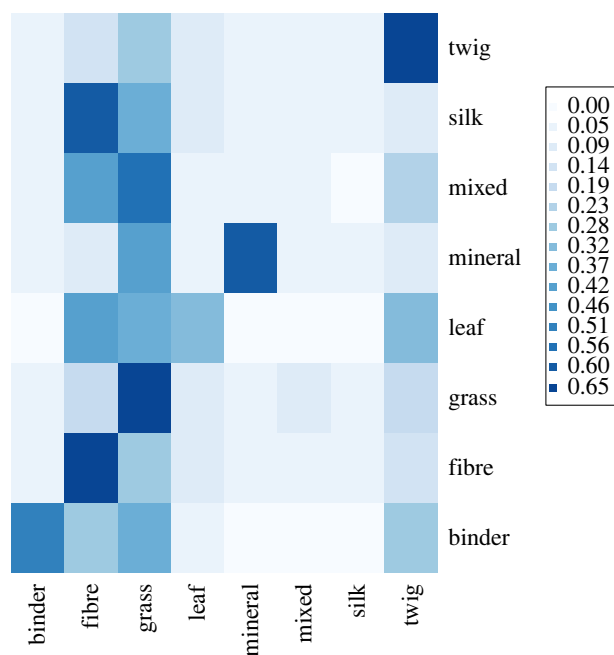


Figure 3. Confusion matrix for the primary material model, including beak morphology and all ecological co-variables as predictors. Rows represent observed material; columns represent model-assigned guesses. Dark blue indicates popular guesses for that row (i.e. a larger proportion of guesses for a given observed material), while white or light blue indicates rare guesses. The category ‘mixed’ indicates mixed evidence for primary material between sources ($n = 331$). See the electronic supplementary material, table S3 for total values.

among the material specialists (electronic supplementary material, table S7), can be attributed to phylogenetic signal under Brownian motion. (For comparison, about 65% of the variation in the main model of [19] could be attributed to phylogenetic simulations, and the marginal R^2 of phylogenetic generalized linear mixed models in other avian traits can be as high as 0.95 [50] or 0.36 [51].) Furthermore, the models predicting primary material and material specialism were partially dependent on frequency bias; downsampled models were only able to predict 43.6% (primary material, electronic supplementary material, table S4) and 47.8% (material specialism, electronic supplementary material, table S6) of the interspecific variation. The models predicting individual material use were somewhat less sensitive to frequency bias, with all down-sampled models scoring at least 65% accuracy (table 1).

Phylogenetic GLMs broadly confirm our findings that beak size and shape correlate with, but are not the main drivers of, nest-material use. Beak size (PC1) and shape (PC2) were identified in model selection procedures as significant correlates of the use of binder, fibre, grass (shape only), silk (size only) and twig, but not leaf or mineral (electronic supplementary material, tables S16–S23).

4. Discussion

Here, we demonstrate that variation in beak shape and nest material can be linked across a large sample of birds, but that these relationships are modulated by ecological co-variables, phylogenetic signal and frequency bias. For example, while grass is used by birds with many different beak sizes and shapes (other than small, pointy ones), silk is generally

only used by small-billed species (of any width/depth: length ratio), and binder is generally only used by species with especially bulky bills (of any size). Given the complexity of these relationships, this is not necessarily evidence of co-evolution (i.e. evolutionary changes between traits that affect each other reciprocally). That such relationships exist at this interspecific scale, however, even after controlling for many forms of bias in the machine-learning approach, indicates an under-appreciated link between selection for object manipulation and broad-scale variation in beak shape. Beaks are a multi-purpose tool [24], and for those species that build a nest, that nest is a key component of avian reproduction and parental care [2,11,52]; we here establish a correlation between these two suites of traits.

Avian beaks serve many ecological purposes, with variation in beak size and shape previously associated with, for example, diet, foraging strategy, song and environmental gradients [19–25,53]. Indeed, some of these previously demonstrated correlations seem to conflict with each other, in part apparently dependent on the phylogenetic scale analysed (e.g. class [19] versus order [20,53]) and/or on which co-variables are included in the modelling approach (e.g. [23]). The potential evolutionary causes and effects of variation in beak morphology are therefore not straightforward; for each of these correlations, it could be that selection acting on one relationship is guiding another, or that some of these correlates of beak shape are themselves co-evolving. While we have controlled for some ecological co-variables within our models, no single study can capture all possible alternative drivers of both beak morphology and nest-material use, particularly not in a sample where the phylogenetic signal is so high. Instead, we offer this broad-scale correlation as a first step, and call on other studies, at many different levels, to establish the exact evolutionary mechanisms driving this pattern. For example, comparative studies of beak shape and diet have begun to explicitly include biomechanical data on the physical properties of the beak (e.g. [21,54]), while a clearer understanding of how different bill morphologies interact with different nest materials could highlight biologically relevant aspects of nest materials that could then inform future comparative work. Material rigidity, for example, could together with individual preferences be linked with zebra finch (*Taeniopygia guttata*) fledgling success in an experimental setting [2]; it could be that different bill shapes are better adapted for manipulating materials with different optimum rigidities.

Although nest structure and location are clearly shaped by natural selection [40,41], nest-material choice is sometimes considered a plastic and opportunistic trait [2,11]. In pied flycatchers, for example, nest-material choice varies with material availability [55], while cigarette butts are incorporated into the nests of house sparrows (*Passer domesticus*) and house finches (*Haemorhous mexicanus*) at a greater rate in urban environments [56], and the incorporation of wool into great tit nests correlates with the proximity of sheep [57]. Other material preferences, however, seem to be more stable [58,59], and might be driven, for example, by sexual selection or by selection for particular thermal or anti-predator properties [33,60–63]. Moreover, the correlations that we find here, over and above the effects of phylogenetic signal and sampling biases, do indicate that interspecific variation in the beak shape and in coarse nest material preferences can be linked. Furthermore, the confusion matrices of our models may indicate which broad categories of material

could fulfil similar ecological roles; for example, while the models were frequently able to predict which species used twigs as a primary material, there was less predictive success with leaves (e.g. figure 3). It thus may be that twigs serve a more mechanically distinct role in the nest structure than do leaves, and thus the incorporation of twigs into nests might be less plastic (or less evolvable) than the incorporation of leaves. Indeed, this may even suggest a potential link between beak morphology and other aspects of nest design, such as nest structure.

We find that body mass and HWI (an index of flight ability and common proxy for dispersal) are consistently meaningful predictors of interspecific variation in nest-material use. The relationship between body mass and nest material may reflect energetic constraints (e.g. that only larger birds can carry and manipulate heavier materials) and/or the need for the nests of larger birds to maintain structural integrity via stronger materials [15,64,65]. Across a sample of 591 passerine species, heavier birds are known to use more woody material in the outside of the nest [64], but otherwise little is known about how mass relates to nest construction on a comparative scale. The relationship with HWI is less easily interpreted. It could be that birds of different flight abilities have different access to materials (e.g. if the association between high HWI and mineral material usage reflects the need to fly farther to obtain suitable pebbles); there is an energetic cost of nest building [66], and many individuals may build nests by opportunistic material gathering [55]. Alternatively, as HWI tends to be lower in tropical species [39], which in turn tend to be under-studied [67], this result could reflect bias in research effort. If, for example, tropical birds were more likely to be identified as nest-material specialists based on under-documentation rather than true representation of nests, the machine-learning algorithms could be using a

small HWI to produce this hypothetical trend rather than predicting a real ecological relationship.

Outside the primates, very little is known about the role of object manipulation as either a cause or a consequence of morphological variation. In a global sample of birds, we have here established a strong correlation between species-level nest-material use and beak morphology, highlighting that form-function co-evolution can occur even in a relatively variable trait. This relationship, however, is tempered by underlying phylogenetic and sampling biases. Further comparative data on how specific beak measurements translate to nest-building efficiency, as well as on the physical role of different nest materials in structuring a nest [15], will clarify the evolutionary links between nest-material choice and beak shapes.

Data accessibility. The data are included in an Excel file as the electronic supplementary material [68].

Authors' contributions. C.S.: conceptualization, data curation, formal analysis, writing—original draft, writing—review and editing; S.E.S.: data curation, writing—review and editing; C.E.: data curation, writing—review and editing; K.N.L.: supervision, writing—review and editing; S.D.H.: supervision, writing—review and editing; S.S.: conceptualization, writing—original draft, writing—review and editing.

All authors gave final approval for publication and agreed to be held accountable for the work performed therein.

Conflict of interest declaration. We declare we have no competing interests.

Funding. This work was supported by a BBSRC Discovery Fellowship (grant no. BB/S01019X/1); the John Templeton Foundation (grant no. 60501); and the European Research Council (grant no. 788203).

Acknowledgements. We would like to thank Camille Troisi, Andrew Clark, Antonia Yovcheva and Alexis Tréboal for help with data collection as well as Alex Pigot and Matteo Battini for early discussions on random forest modelling.

References

- Sugasawa S, Webb B, Healy SD. 2021 Object manipulation without hands. *Proc. R. Soc. B* **288**, 20203184. (doi:10.1098/rspb.2020.3184)
- Breen AJ, Healy SD, Guillette LM. 2021 Reproductive consequences of material use in avian nest construction. *Behav. Processes* **193**, 104507. (doi:10.1016/j.beproc.2021.104507)
- Pouydebat E, Bardo A. 2019 An interdisciplinary approach to the evolution of grasping and manipulation. *Biol. J. Linn. Soc.* **127**, 535–542. (doi:10.1093/biolinnean/blz058)
- Iwaniuk AN, Whishaw IQ. 2000 On the origin of skilled forelimb movements. *Trends Neurosci.* **23**, 372–376. (doi:10.1016/S0166-2236(00)01618-0)
- Lovejoy CO, Simpson SW, White TD, Asfaw B, Suwa G. 2009 Careful climbing in the Miocene: the forelimbs of *Ardipithecus ramidus* and humans are primitive. *Science* **326**, 70–70e78. (doi:10.1126/science.1175827)
- Napier JR. 1960 Studies of the hands of living primates. *Proc. Zool. Soc. Lond.* **134**, 647–657. (doi:10.1111/j.1469-7998.1960.tb05606.x)
- Kivell TL, Lemelin P, Richmond BG, Schmitt D. 2016 *The evolution of the primate hand: anatomical, developmental, functional, and paleontological evidence*. New York, NY: Springer.
- Kivell TL. 2015 Evidence in hand: recent discoveries and the early evolution of human manual manipulation. *Phil. Trans. R. Soc. B* **370**, 20150105. (doi:10.1098/rstb.2015.0105)
- Barber I. 2013 The evolutionary ecology of nest construction: insight from recent fish studies. *Avian Biol. Res.* **6**, 83–98. (doi:10.3184/175815513X13609538379947)
- Collias NE, Collias EC. 2014 *Nest building and bird behavior*. Princeton, NJ: Princeton University Press.
- Hansell M. 2000 *Bird nests and construction behaviour*. Cambridge, UK: Cambridge University Press.
- Sugasawa S, Edwards SC, Stanforth R, Bruton E, Hansell M, Reilly M, Healy SD. 2021 A non-destructive approach to collect nest material data using photographs. *Ibis* **163**, 1457–1462. (doi:10.1111/ibi.12961)
- Tomás G, Merino S, Martínez-de la Puente J, Moreno J, Morales J, Rivero-de Aguilar J. 2013 Nest size and aromatic plants in the nest as sexually selected female traits in blue tits. *Behav. Ecol.* **24**, 926–934. (doi:10.1093/beheco/art015)
- Biddle LE, Goodman AM, Deeming DC. 2017 Construction patterns of birds' nests provide insight into nest-building behaviours. *PeerJ* **5**, e3010. (doi:10.7717/peerj.3010)
- Biddle LE, Deeming DC, Goodman AM. 2018 Birds use structural properties when selecting materials for different parts of their nests. *J. Ornithol.* **159**, 999–1008. (doi:10.1007/s10336-018-1571-y)
- Breen AJ, Guillette LM, Healy SD. 2016 What can nest-building birds teach us? *Comp. Cogn. Behav. Rev.* **11**, 83–102. (doi:10.3819/ccbr.2016.110005)
- Collias EC, Collias NE. 1964 The development of nest-building behavior in a weaverbird. *Auk* **81**, 42–52. (doi:10.2307/4082609)
- Darwin C. 1859 *On the origin of species*. London, UK: John Murray.
- Pigot AL *et al.* 2020 Macroevolutionary convergence connects morphological form to ecological function in birds. *Nat. Ecol. Evol.* **4**, 230–239. (doi:10.1038/s41559-019-1070-4)
- Bright JA, Marugán-Lobón J, Rayfield EJ, Cobb SN. 2019 The multifactorial nature of beak and skull shape evolution in parrots and cockatoos (Psittaciformes). *BMC Evol. Biol.* **19**, 104. (doi:10.1186/s12862-019-1432-1)

21. Navalón G, Bright JA, Marugán-Lobón J, Rayfield EJ. 2019 The evolutionary relationship among beak shape, mechanical advantage, and feeding ecology in modern birds. *Evolution* **73**, 422–435. (doi:10.1111/evo.13655)
22. Derryberry EP, Seddon N, Claramunt S, Tobias JA, Baker A, Aleixo A, Brumfield RT. 2012 Correlated evolution of beak morphology and song in the neotropical woodcreeper radiation. *Evolution* **66**, 2784–2797. (doi:10.1111/j.1558-5646.2012.01642.x)
23. Sebastianelli M, Lukhele SM, Nwankwo EC, Hadjioannou L, Kirschel ANG. 2022 Continent-wide patterns of song variation predicted by classical rules of biogeography. *Ecol. Lett.* **25**, 2448–2462. (doi:10.1111/ele.14102)
24. Friedman NR, Miller ET, Ball JR, Kasuga H, Remeš V, Economo EP. 2019 Evolution of a multifunctional trait: shared effects of foraging ecology and thermoregulation on beak morphology, with consequences for song evolution. *Proc. R. Soc. B* **286**, 20192474. (doi:10.1098/rspb.2019.2474)
25. Friedman NR, Harmáčková L, Economo EP, Remeš V. 2017 Smaller beaks for colder winters: thermoregulation drives beak size evolution in Australasian songbirds. *Evolution* **71**, 2120–2129. (doi:10.1111/evo.13274)
26. Hansell M. 2007 *Built by animals: the natural history of animal architecture*. Oxford, UK: Oxford University Press.
27. Sugawara S, Pritchard DJ. 2022 The significance of building behavior in the evolution of animal architecture. *Ecol. Res.* **37**, 316–324. (doi:10.1111/1440-1703.12309)
28. Mayr E. 1982 *The growth of biological thought: diversity, evolution, and inheritance*. Cambridge, MA: Harvard University Press.
29. Abzhanov A, Kuo WP, Hartmann C, Grant BR, Grant PR, Tabin CJ. 2006 The calmodulin pathway and evolution of elongated beak morphology in Darwin's finches. *Nature* **442**, 563–567. (doi:10.1038/nature04843)
30. Abzhanov A, Protas M, Grant BR, Grant PR, Tabin CJ. 2004 Bmp4 and morphological variation of beaks in Darwin's finches. *Science* **305**, 1462–1465. (doi:10.1126/science.1098095)
31. Fang YT, Tuanmu MN, Hung CM. 2018 Asynchronous evolution of interdependent nest characters across the avian phylogeny. *Nat. Commun.* **9**, 1863. (doi:10.1038/s41467-018-04265-x)
32. Hall ZJ, Street SE, Auty S, Healy SD. 2015 The coevolution of building nests on the ground and domed nests in Timaliidae. *Auk* **132**, 584–593. (doi:10.1642/AUK-15-23.1)
33. Vanadzina K, Street SE, Healy SD, Laland KN, Sheard C. 2022 Global drivers of variation in cup nest size in passerine birds. *J. Anim. Ecol.* **92**, 338–351. (doi:10.1111/1365-2656.13815)
34. Tobias JA *et al.* 2022 AVONET: morphological, ecological and geographical data for all birds. *Ecol. Lett.* **25**, 581–597. (doi:10.1111/ele.13898)
35. Billerman SM, Keeney MK, Rodewald PG, Schulenberg TS. 2022 *Birds of the world*. Ithaca, NY: Cornell Laboratory of Ornithology.
36. Wilman H, Belmaker J, Simpson J, Rosa CDL, Rivadeneira MM, Jetz W. 2014 EltonTraits 1.0: species-level foraging attributes of the world's birds and mammals. *Ecology* **95**, 2027. (doi:10.1890/13-1917.1)
37. Jetz W, Thomas GH, Joy JB, Hartmann K, Mooers AO. 2012 The global diversity of birds in space and time. *Nature* **491**, 444–448. (doi:10.1038/nature11631)
38. Paradis E, Claude J, Strimmer K. 2004 APE: analyses of phylogenetics and evolution in R language. *Bioinformatics* **20**, 289–290. (doi:10.1093/bioinformatics/btg412)
39. Sheard C, Neate-Clegg MHC, Alioravainen N, Jones SEI, Vincent C, MacGregor HEA, Bregman TP, Claramunt S, Tobias JA. 2020 Ecological drivers of global gradients in avian dispersal inferred from wing morphology. *Nat. Commun.* **11**, 2463. (doi:10.1038/s41467-020-16313-6)
40. Lima SL. 2009 Predators and the breeding bird: behavioral and reproductive flexibility under the risk of predation. *Biol. Rev.* **84**, 485–513. (doi:10.1111/j.1469-185X.2009.00085.x)
41. Mainwaring MC, Hartley IR, Lambrechts MM, Deeming DC. 2014 The design and function of birds' nests. *Ecol. Evol.* **4**, 3909–3928. (doi:10.1002/ece3.1054)
42. Liaw A, Wiener M. 2002 Classification and regression by randomForest. *R News* **2**, 18–22.
43. R Core Team. 2022 *R: a language and environment for statistical computing*. Vienna, Austria: R Foundation for Statistical Computing.
44. Breiman L. 2001 Random forests. *Mach. Learn.* **45**, 5–32. (doi:10.1023/A:1010933404324)
45. Pennell MW, Eastman JM, Slater GJ, Brown JW, Uyeda JC, FitzJohn RG, Alfaro ME, Harmon LJ. 2014 geiger v2.0: an expanded suite of methods for fitting macroevolutionary models to phylogenetic trees. *Bioinformatics* **30**, 2216–2218. (doi:10.1093/bioinformatics/btu181)
46. Tung Ho LS, Ané C. 2014 A Linear-time algorithm for Gaussian and non-Gaussian trait evolution models. *Syst. Biol.* **63**, 397–408. (doi:10.1093/sysbio/syu005)
47. Drummond AJ, Rambaut A. 2007 BEAST: Bayesian evolutionary analysis by sampling trees. *BMC Evol. Biol.* **7**, 214. (doi:10.1186/1471-2148-7-214)
48. Claramunt S, Derryberry EP, Renssen JV, Brumfield RT. 2012 High dispersal ability inhibits speciation in a continental radiation of passerine birds. *Proc. R. Soc. B* **279**, 1567–1574. (doi:10.1098/rspb.2011.1922)
49. Lockwood R, Swaddle JP, Rayner JMV. 1998 Avian wingtip shape reconsidered: wingtip shape indices and morphological adaptations to migration. *J. Avian Biol.* **29**, 273–292. (doi:10.2307/3677110)
50. Tobias JA, Sheard C, Seddon N, Meade A, Cotton AJ, Nakagawa S. 2016 Territoriality, social bonds, and the evolution of communal signaling in birds. *Front. Ecol. Evol.* **4**, 74. (doi:10.3389/fevo.2016.00074)
51. Stoddard MC, Yong EH, Akkaynak D, Sheard C, Tobias JA, Mahadevan L. 2017 Avian egg shape: form, function, and evolution. *Science* **356**, 1249–1254. (doi:10.1126/science.aaj1945)
52. Järvinen P, Brommer JE. 2020 Lining the nest with more feathers increases offspring recruitment probability: selection on an extended phenotype in the blue tit. *Ecol. Evol.* **10**, 13 327–13 333. (doi:10.1002/ece3.6931)
53. Bright JA, Marugán-Lobón J, Cobb SN, Rayfield EJ. 2016 The shapes of bird beaks are highly controlled by nondietary factors. *Proc. Natl Acad. Sci USA* **113**, 5352–5357. (doi:10.1073/pnas.1602683113)
54. Soons J, Genbrugge A, Podos J, Adriaens D, Aerts P, Dircx J, Herrel A. 2015 Is beak morphology in Darwin's finches tuned to loading demands? *PLoS ONE* **10**, e0129479. (doi:10.1371/journal.pone.0129479)
55. Briggs KB, Deeming DC. 2016 Use of materials in nest construction by pied flycatchers *Ficedula hypoleuca* reflects localized habitat and geographical location. *Bird Study* **63**, 516–524. (doi:10.1080/00063657.2016.1238867)
56. Suárez-Rodríguez M, López-Rull I, Macías García C. 2013 Incorporation of cigarette butts into nests reduces nest ectoparasite load in urban birds: new ingredients for an old recipe? *Biol. Lett.* **9**, 20120931. (doi:10.1098/rsbl.2012.0931)
57. Britt J, Deeming DC. 2011 First-egg date and air temperature affect nest construction in blue tits *Cyanistes caeruleus*, but not in great tits *Parus major*. *Bird Study* **58**, 78–89. (doi:10.1080/00063657.2010.524916)
58. Surgy J, Feu CRD, Deeming DC. 2012 Opportunistic use of a wool-like artificial material as lining of tit (Paridae) nests. *Condor* **114**, 385–392. (doi:10.1525/cond.2012.110111)
59. García-Navas V, Valera F, Griggio M. 2015 Nest decorations: an 'extended' female badge of status? *Anim. Behav.* **99**, 95–107. (doi:10.1016/j.anbehav.2014.10.024)
60. Soler JJ, Møller AP, Soler M. 1998 Nest building, sexual selection and parental investment. *Ecol. Evol.* **12**, 427–441. (doi:10.1023/A:1006520821219)
61. Mainwaring MC, Deeming DC, Jones CI, Hartley IR. 2014 Adaptive latitudinal variation in common blackbird *Turdus merula* nest characteristics. *Ecol. Evol.* **4**, 851–861. (doi:10.1002/ece3.952)
62. Mulder T, Campbell CJ, Ruxton GD. 2021 Evaluation of disruptive camouflage of avian cup-nests. *Ibis* **163**, 150–158. (doi:10.1111/ibi.12848)
63. Sergio F, Blas J, Blanco G, Tanferna A, López L, Lemus JA, Hiraldo F. 2011 Raptor nest decorations are a reliable threat against conspecifics. *Science* **331**, 327–330. (doi:10.1126/science.1199422)
64. Deeming DC. 2018 Use of woody materials in nests reflects body mass in passerines. *Bird Study* **65**, 417–421. (doi:10.1080/00063657.2018.1504876)
65. Heenan CB, Seymour RS. 2011 Structural support, not insulation, is the primary driver for avian cup-shaped nest design. *Proc. R. Soc. B* **278**, 2924–2929. (doi:10.1098/rspb.2010.2798)
66. Mainwaring MC, Hartley IR. 2013 The energetic costs of nest building in birds. *Avian Biol. Res.* **6**, 12–17. (doi:10.3184/175815512X13528994072997)
67. Ducatez S, Lefebvre L. 2014 Patterns of research effort in birds. *PLoS ONE* **9**, e89955. (doi:10.1371/journal.pone.0089955)
68. Sheard C, Street SE, Evans C, Lala KN, Healy SD, Sugawara S. 2023 Beak shape and nest material use in birds. Figshare. (doi:10.6084/m9.figshare.c.6677602)