



# HHS Public Access

Author manuscript

*Nature*. Author manuscript; available in PMC 2023 July 12.

Published in final edited form as:

*Nature*. 2021 September ; 597(7875): 196–205. doi:10.1038/s41586-021-03620-1.

## A roadmap for the Human Developmental Cell Atlas

*A full list of authors and affiliations appears at the end of the article.*

### Abstract

The Human Developmental Cell Atlas (HDCA) initiative, which is part of the Human Cell Atlas, aims to create a comprehensive reference map of cells during development. This will be critical to understanding normal organogenesis, the effect of mutations, environmental factors and infectious agents on human development, congenital and childhood disorders, and the cellular basis of ageing, cancer and regenerative medicine. Here we outline the HDCA initiative and the challenges of mapping and modelling human development using state-of-the-art technologies to create a reference atlas across gestation. Similar to the Human Genome Project, the HDCA will integrate the output from a growing community of scientists who are mapping human development into a unified atlas. We describe the early milestones that have been achieved and the use of human stem-cell-derived cultures, organoids and animal models to inform the HDCA, especially for prenatal tissues that are hard to acquire. Finally, we provide a roadmap towards a complete atlas of human development.

Most modern developmental biology research has historically focused on model organisms. Owing to practical challenges, human development—from a fertilized ovum to a fully formed fetus at birth—has remained a poorly understood ‘black box’. The implications of a human developmental cell atlas for understanding human development are far-reaching, as many congenital disorders and childhood cancers may originate during susceptible windows of development<sup>1–3</sup>. The clinical relevance of the atlas extends into adulthood for ageing, cancer and applications in regenerative medicine and stem cell therapies<sup>4–6</sup>. Furthermore, embryonic and fetal stem cells<sup>7,8</sup> and developmental trajectories provide an essential reference and guide for engineering human stem-cell-derived models<sup>9–13</sup>, organoids<sup>14</sup> and cellular therapies.

**Correspondence and requests for materials** should be addressed to M.H. [m.a.haniffa@ncl.ac.uk](mailto:m.a.haniffa@ncl.ac.uk).

\* A list of authors and their affiliations appears at the end of the paper.

**Author contributions** M.H., D.T. and S. Linnarsson are coordinators of the HCA Developmental Biological Network. M.H., S.A.T. and A. Regev conceived the idea, co-ordinated the writing process, wrote parts of the paper and edited all sections. A.H. designed and created the figures. All other authors wrote parts of the paper and provided feedback on all parts.

**Competing interests** A. Regev is a co-founder and equity holder of Celsius Therapeutics, an equity holder in Immunitas, and was a Scientific Advisory Board member of Thermo Fisher Scientific, Syros Pharmaceuticals, Neogene Therapeutics and Asimov until 31 July 2020. From 1 August 2020, A. Regev and O.R.-R. are employees of Genentech. S.A.T. has consulted for Genentech and Roche, and is a remunerated member of Scientific Advisory Boards for GlaxoSmithKline, Biogen and Foresite Labs. J. Lundeberg is a scientific advisor for 10x Genomics. All other authors declare no competing interests.

Additional information

**Supplementary information** The online version contains supplementary material available at <https://doi.org/10.1038/s41586-021-03620-1>.

**Peer review information** *Nature* thanks Oliver Pourquié, Susana Chuva de Sousa Lopes and the other, anonymous, reviewer(s) for their contribution to the peer review of this work.

**Reprints and permissions information** is available at <http://www.nature.com/reprints>.

Human development begins with a fertilized oocyte that divides and differentiates through preimplantation, embryonic and fetal stages (Fig. 1). Early studies began with morphometric and qualitative assessments of human embryos, leading to development of the Carnegie staging system<sup>15</sup> (Fig. 1). Advances in imaging, cytometry and genomics technologies have provided further insights into the complex spatiotemporal changes during organogenesis<sup>16</sup>. Recent progress in single-cell profiling technologies has revolutionized our ability to study human development at an unprecedented resolution<sup>17</sup>. Leveraging these advances to build a comprehensive atlas of human development (from the fertilized oocyte to birth) at cellular resolution is an ambitious endeavour that is similar in scale to the Human Genome Project, which required multidisciplinary scientific expertise from disparate fields working together collaboratively. Such a community has arisen from the grassroots assembly of global researchers who are working as part of the Human Cell Atlas (HCA)<sup>18</sup> initiative. As with the Human Genome Project, the HCA will be a foundational scientific resource, composed of diverse data types and available freely through browsable and searchable web portals that visualize cells across anatomical space and developmental time.

The HDCA is a strategic focus of HCA<sup>19</sup>, and is pursued by scientists from individual laboratories as well as large national and international research consortia (Supplementary Table 1); the HDCA is open to all who adhere to its mission and open science values<sup>20</sup>. The HDCA aims for equity, inclusivity and diversity both in terms of scientific participation and the representation of human tissue samples. We encourage any interested researcher to become a member, participate, register their study and contribute their data and publications to the HDCA and HCA<sup>21</sup>.

## Building a developmental cell atlas

The successful construction of a HDCA poses substantial scientific challenges in terms of experimental measurement technologies, computational analysis and visualization algorithms (Fig. 2). In particular, the dynamic nature of gestation creates challenges for designing a sampling strategy, especially to capture transient morphological changes in the first eight weeks. A major endeavour for the HDCA will be to develop the conceptual and computational framework to capture development with respect to cellular and morphological changes. The HDCA, through coordination with the HCA Organoid Network<sup>22</sup>, will incorporate data from in vitro culture model and organoid systems<sup>23</sup> to cautiously infer development between seven days and four weeks after conception (a period in which samples are difficult to obtain) (Fig. 1b, c).

The successful delivery of the HDCA will leverage the Human Genome Project-initiated restructuring of how large science projects are funded, conducted, coordinated and shared (based on the Fort Lauderdale Principles<sup>24</sup>) that forms the basis for the HCA, its committees (for example, computation and ethics) and 'Biological Networks'<sup>20</sup>. This organizational framework has enabled researchers to form large-scale coordinated collaborations across technologies and biological disciplines: developmental biology, embryology, genetics and model systems, computational biology, clinical specialities (including in vitro fertilization), clinical genetics and pathology, as well as coordination with funders. Partnerships with

allied biological networks, including organoid and paediatric atlas projects, will facilitate clinical applications.

## Ethics, resources and data sharing

Accessing human developmental samples is constrained by general and geographically specific ethical and legal challenges. These include issues relating to donation, access to and research use of legally defined developing human tissue material, regulatory approvals processes and cultural sensitivities. Research on human embryos and fetuses is supported within European and national regulations, such as the UK National Research Ethics Service (NRES) and the French Agence de Biomédecine. In the UK, studies on preimplantation human embryos (up to 14 days after conception) are governed by the Human Fertilisation and Embryology Authority and a research ethics committee (such as NRES). However, in the USA, research on donated human embryonic and fetal materials has increasingly been restricted over the past two decades, despite the existence of similar regulatory oversight.

Nonetheless, resources to support research in human development (such as the UK's Human Developmental Biology Resource (HDBR)<sup>25</sup>) provide material to researchers. Recipients of HDBR tissue who are not based in the UK require their own project-specific ethics approval, before receipt of material. The HDBR provides embryonic and fetal samples from 4 to 20 weeks after conception with karyotype information and, increasingly, with anonymized maternal DNA and clinical history. Material from fetuses with prenatally diagnosed disorders is also available. The French Human Developmental Cell Atlas (HuDeCA) (<https://hudeca.genouest.org>) has recently been established, and aspires to constitute a comprehensive European resource of human embryonic or early fetal samples.

The international sharing of genomic sequencing and clinical data derived from prenatal or paediatric tissue samples is subject to data protection regulation that considers live versus deceased status, consent regarding research data use and confidentiality. Data from living donors are shared under appropriate access controls. The HCA Ethics Working Group is developing tools, guidance notes<sup>26</sup>, consent-form templates and sampling information for embryonic, fetal and paediatric tissue material, and international data-sharing guidance for the HDCA.

## Mapping development across space and time

Development is intricately orchestrated in three spatial dimensions and gestation time. Human embryogenesis cannot be easily assessed at high resolution *in vivo*<sup>27</sup>. Time-lapse studies are limited to *in vitro* pre-implantation embryos. The application of high-throughput genomics technologies to dissociated cells and tissue sections *in situ* is beginning to provide data of unprecedented resolution (Fig. 3, Table 1).

## Cellular and molecular heterogeneity

Single-cell molecular profiles based on RNA, chromatin accessibility, methylation or select protein signatures have enabled a more nuanced definition of cell types and states. The data underpinning such definitions are increasingly derived from single-cell RNA sequencing

(scRNA-seq), barcoded antibodies and accessible chromatin sequencing of dissociated cells<sup>28,29</sup>. Resolving cell types and trajectories at high granularity is aided by full-length scRNA-seq, but is primarily performed by profiling large numbers of cells. Cell-type definition is currently guided by existing knowledge from model organisms and adult cellular profiles, which may not faithfully reflect prenatal cell types, transient cell types that are present only during development and transitional states of differentiation.

To overcome these challenges, many time points need to be profiled and defined cell states need to be mapped back into their 3D space over time and functionally characterized. High levels of multiplexing can attain this level of granularity at an affordable cost for a complete human developmental cell atlas<sup>30,31</sup>. Molecular profiles, morphology, functional assessment and other features can reflect the multifaceted state of a cell. For example, the transcriptome reflects the present and potential future of a cell; protein expression captures the immediate past and present state of a cell; chromatin profiles reveal its invariant type and potential for future differentiation; and ontogeny reveals its history.

The field of developmental biology has traditionally drawn on ontogenic relationships to define cell types, but this is challenging in humans for whom information is captured as snapshots across gestation. CRISPR scarring is applicable only in stem cells, organoid systems and short-term explants<sup>32,33</sup>. The tracking of somatic mutations is the only available technology to definitively determine ontogeny, but is limited by its current lack of scalability<sup>34,35</sup>. Recent methods that rely on the simultaneous measurement of mitochondrial DNA and RNA, transcriptome and open chromatin may overcome this challenge<sup>36,37</sup>. We anticipate the field moving towards a consensus cell ontology that integrates multimodal single-cell profiling data as well as legacy knowledge of embryonic cell-type definitions augmented by information from diverse animal models.

## Mapping cells in 2D and 3D

Spatial genomics methods to measure RNA in tissue sections typically offer a trade-off: high-resolution (single-cell and subcellular) methods that typically measure hundreds of transcripts or whole transcriptome profiles at a multicellular level<sup>38,39</sup>. This trade-off can be mitigated by integration with single-cell profiles from dissociated cells, expanding the genomic coverage by predicting the spatial expression of unmeasured genes or enhancing resolution by deconvolution of multicellular measurements. Tissue clearing methods to render organs transparent<sup>40</sup>, combined with whole-mount protein immunostaining and RNA single-molecule fluorescence in situ hybridization (FISH)<sup>41,42</sup>, can now provide 3D molecular profiling at cellular or subcellular resolution using light-sheet microscopy<sup>43–45</sup>. Increasing multiplex capacity and use of artificial intelligence and machine learning algorithms to overcome data analytical challenges have successfully been deployed to image whole-organismal vasculature following tissue clearing<sup>46,47</sup>.

## Biophysical methods and live imaging

Mounting evidence from *Drosophila* and other models shows that mechanical forces have a key role in development processes and tissue morphogenesis<sup>48</sup>. Surface tension and

pressure can be measured in single cells of preimplantation mouse embryos<sup>49</sup>. Adapting these technologies to human preimplantation embryos and stem-cell-based embryo models<sup>50</sup> can build a spatiotemporal mechanical atlas.

## Positional landmarks in development

A standard coordinate system for locations in the human body (a common coordinate framework (CCF)) is crucial for the HCA and HDCA<sup>51</sup>. Two types of systems are useful: absolute (similar to postcode or zip code addresses) and relative (similar to a landmark-based address system). CCF anatomical ‘postcodes’ enable the integration of multimodal datasets of different spatial and longitudinal resolution. The Allen Mouse Brain Reference Atlas version 3 provides a CCF of 3D anatomical features and local features grouped in a hierarchy to facilitate multilevel analysis of the mouse brain. Efforts are currently underway to establish CCFs for adult human organs within the Human Biomolecular Atlas Program of the National Institutes of Health (NIH). The HDCA will need to develop a CCF that incorporates space and time, as well as cell movement and patterns during organogenesis on the basis of existing macro-level 3D coordinates for human embryos (such as the HDBR atlas (<http://hdbratlas.org/>) and the Transparent Human Embryo (<https://transparent-human-embryo.com/>)).

## Computation and data visualization

Among the key algorithmic challenges to integrating data into a developmental atlas are (1) mapping cells with more intermediate states compared to adult counterparts; (2) inferring time orderings and lineage relations, including branching lineages and multiple paths converging on the same outcome; (3) inferring spatial movement of cells; (4) building a temporal series of CCFs, each as a probabilistic model for a time window as well as a model for their morphing along space and time<sup>52</sup>; (5) mapping across modalities and time points (for example, chromatin states in one time window to RNA and protein levels of another); and (6) regulatory and molecular network inference within and across cells. Theories and insights from multiple fields will be required to model the mechanisms that underpin tissue formation and growth. It is likely that additional emergent properties of cells and their ecosystems will be discovered using interdisciplinary approaches. These will need new vocabularies, ontologies and modelling approaches to be understood. The HDCA community must also apply FAIR (findability, accessibility, interoperability and reusability) principles to help to ensure reproducibility and data accessibility<sup>53</sup>.

Computational integration of multi-omics data for visualizations similar to that of Google Maps, such as the Open Microscopy Environment (<https://www.openmicroscopy.org/>), will enable zooming to the single-cell level from a large-volume tissue view. Additional complexity will combine visualizations from imaging and sequencing data. A sophisticated abstraction of raw data and integration across modalities, anchored by a developmental CCF, will be essential. Links to clinical relevance and applications will enhance the utility of the atlas.

## Emerging cell atlases of human development

The advantages of whole tissue or organ profiling compared to lineage-centric analysis include comprehensive cellular analysis and the discovery of emergent biological properties. For example, the developing liver functions as a haematopoietic organ during early gestation until the middle of the second trimester, before it functionally transitions into a metabolic organ similar to the adult liver<sup>54</sup>. To meet the high demand for erythropoiesis during development, the human skin and adrenal glands can also support erythrocyte maturation during the first trimester<sup>54,55</sup>.

In contrast to our terrestrial postnatal life, the human embryo and fetus exist in an aquatic environment: our lung, gut and skin are exposed to amniotic fluid. In contrast to the postnatal lung, the developing lung does not perform oxygen transfer or receive the same volume of blood through the pulmonary veins. The effect of these physiological factors on individual tissues and the role of the placenta and maternal decidua in supporting human embryogenesis and fetal life are emerging<sup>56,57</sup>.

Current organ atlases of brain, gut, heart, liver, kidney, placenta, thymus and skin (Table 1) underscore the importance of studying human samples and have revealed unique aspects of human development that are not conserved with animal model systems<sup>58–61</sup>. These include timelines of development during gestation, cell-type markers and the expression pattern of transcription factors between mouse and human organs<sup>62,63</sup>.

The specification of functional tissue niches occurs during both prenatal and postnatal life. Studies of the fetal gut have highlighted the importance of interactions between the epithelial and mesenchymal compartments in allowing the formation of villi, and have identified fetal gut transcription factors that are aberrantly activated in individuals with paediatric Crohn's disease<sup>64</sup>. Comparison between the developing and adult kidney have demonstrated the establishment of a dedicated spatial zonation pattern that protects against uropathogenic bacterial challenges postnatally<sup>61,65</sup>. Single-cell transcriptomics of germ cells during development have provided important insights into the main pathways that control their differentiation<sup>66,67</sup>, with ongoing studies focused on exploring the regulatory mechanisms of sex determination (<https://hugodeca-project.eu>).

Early developmental studies of the brain have focused on human and primate cortical development<sup>68–70</sup>. The developing human and rodent midbrain, which contains the clinically relevant dopaminergic cell groups that are lost in individuals with Parkinson's disease, has also extensively been studied<sup>63,71,72</sup>, as have the developing mouse spinal cord and cerebellum<sup>73,74</sup>, the hypothalamic arcuate nucleus and the diencephalon<sup>75</sup>.

Atlases of distributed systems (such as the immune system) have been initiated, detailing haematopoietic organs such as the yolk sac<sup>76,77</sup> and liver<sup>54</sup>, lymphoid tissues such as thymus (in which T cells differentiate)<sup>78</sup> and non-lymphoid tissues such as skin and kidney, in which immune cells reside. These studies have revealed an intrinsic change in the differentiation potential of haematopoietic stem progenitor cells with gestational time, together with the importance of the local tissue microenvironment for blood and immune-cell development.

## Model organisms and culture systems

Our understanding of human development has largely been inferred from studies on animal model systems that are not always conserved across species<sup>79</sup> (Fig. 1). Two recent studies contrast the kinetics of development between human and mouse, highlighting the need for caution in interpreting heterospecific graft studies and findings from nonprimate preclinical models<sup>80,81</sup>. However, the feasibility of perturbation and in-depth mechanistic studies using animal models and culture systems provide a valuable scaffold and complement the HDCA, particularly for the immediate weeks after implantation during which human samples are inaccessible.

Single-cell molecular profiling has transformed many aspects of developmental biology research across all major model organisms<sup>82–86</sup>, providing mechanistic insights into fundamental biological processes (including the early specification of germ layers and diversification of early cardiovascular cells)<sup>29,87</sup>. Comparative biology has the potential to make major contributions to cell ontology. The availability of parallel human and model species data will support expanded cross-species analyses. Computational analysis can align cells and inferred lineages across species to extrapolate findings from nonprimate models and help to optimize animal models of normal and pathological human development. From a computational perspective, it will be important to develop tools for better annotation of 3' and 5' untranslated regions of animal model data, as most scRNA-seq technologies capture only these regions. The development of computational tools that can robustly map developmental trajectories across species and that can account for different developmental kinetics between cell types within and between species will be required. Comparative studies of human and mouse preimplantation and gastrulation embryos have revealed conserved and divergent transcriptional programs. For example, *Klf2* expression in mouse embryo-fated epiblast progenitor cells is not observed in humans; by contrast, *KLF17* is enriched in human, but not mouse, epiblast<sup>88</sup>.

The self-organization of human embryonic tissue can be captured from the earliest moments in vitro<sup>50,89</sup>, and extended to gastrulation, anterior–posterior embryonic patterning and the early phases of somitogenesis<sup>11</sup>. The recent human gastrulation embryo dataset will be informative as a benchmark to further refine in vitro directed differentiation of human cells, including gastruloid models<sup>11</sup>. Other processes during organogenesis can also be monitored, including the clock control of somite segmentation<sup>90,91</sup>, boundary formations during hepato-biliary–pancreatic organ budding<sup>92</sup> and patterning of the neural tube. Protocols are now established to mimic the development of diverse human tissues that exhibit morphologies and physiological functionalities of developing human tissues. These organoid systems include hair-bearing skin<sup>93</sup>; the small intestine with a crypt–villus axis<sup>94</sup>; region-specific<sup>95</sup> and multiregion<sup>96</sup> brain tissue that models neurogenesis, neural migration and synapse formation; multilayered neural retina with photoreception responses<sup>97</sup>; and arterio-venous specification during blood vessel development<sup>98</sup>.

A comprehensive reference atlas of the cell types and states that are present during human development will be critical to benchmark stem-cell-derived organoids. Such roadmap comparisons will highlight similarities<sup>69</sup> and deficiencies<sup>99</sup>, and define strategies for

improving organoids for disease modelling. In the future, high-fidelity human stem-cell-derived human organoids and single-cell multi-omic modalities will be powerful tools to understand the mechanisms that control human organogenesis.

## Clinical relevance and applications

The interaction of genotype and environment that leads to phenotype underlies developmental disorders. A range of childhood and adult disorders have their origins in prenatal life (Fig. 4). These include structural birth defects<sup>100</sup>, neurodevelopmental disorders (including schizophrenia)<sup>101</sup>, childhood cancers<sup>2,65</sup>, inborn errors of immunity<sup>102</sup>, infertility and differences of sex development<sup>103</sup>, as well as many paediatric disorders<sup>104</sup>. Thousands of rare genetic diseases can each present a spectrum of perturbed developmental sequelae at birth, and sometimes differ widely in medical presentation even when classified as the same disease or condition<sup>105</sup>. As examples, Down syndrome (trisomy 21)<sup>106</sup> and 22q11.2 deletion syndrome<sup>107</sup> separately present substantial risks for schizophrenia, Alzheimer's disease and hypothyroidism starting in adolescence<sup>108</sup>. Identifying the aetiology of developmental disorders and the effects of maternal genotype, paternal age and other external risk factors (such as diet, alcohol, toxins, endocrine disruptors and pathogens) has been hampered by our limited understanding of normal development in humans.

Development atlases are also revealing the pathogenesis of childhood cancers (Fig. 4). Paediatric and adult brain tumours in their early stages often present impaired developmental programs within tumour cells<sup>109,110</sup>. Comparing the expression profile of tumour cells with the HDCA can identify the cancer cell of origin and its oncogenic pathways. For example, a single-cell atlas of the developing mouse cerebellum has been used to investigate subtypes of human medulloblastoma (a paediatric brain tumour)<sup>2,111</sup>, and cell states during nephrogenesis revealed the developmental cellular origin of Wilms' tumour<sup>65</sup>. High-resolution mapping of developing immune cells will inform the molecular basis and extent of disease phenotypes of childhood leukaemias and primary immunodeficiencies.

Many adult cancers also recapitulate a dysregulated version of human developmental programs<sup>112</sup>. The acquisition of early developmental molecular programs is characteristic of malignant pathology, and is a previously unrecognized hallmark of immunological disease and the cancer immune environment<sup>113,114</sup>. HDCA data have also facilitated our understanding of the differential susceptibility of adult and prenatal cells to SARS-CoV-2 through examination of viral entry receptor and protease expression in a wide range of organs<sup>115</sup>.

Cell and tissue engineering for clinical therapies and regenerative medicine are areas with considerable potential for the direct utility of the HDCA. Cell therapies derived from human pluripotent stem cells are now entering early clinical trials for the treatment of Parkinson's disease<sup>116</sup>, using protocols that were refined on the basis of developmental studies of midbrain dopaminergic neurons<sup>72</sup>. Similar approaches are being followed to develop a range of other stem cell products for human trials<sup>117</sup>. Haematopoietic stem cell transplantation is an established and widely used treatment for many haematological, and increasingly non-haematological, disorders. Leveraging the potency factors of fetal haematopoietic stem



cells could have a substantial benefit for patients who receive transplants of haematopoietic stem cells.

## Towards a whole embryo atlas

The initial HCA white paper emphasized 12 distinct organ systems within the human body and highlighted the importance of a developmental cell atlas. Integrated multi-organ analyses will provide insights into the tissue microenvironment that shapes resident epithelial, stroma and immune cells and the cellular heterogeneity of innervating blood vessels, lymphatics and peripheral nerves. Eventually, this may illuminate system-level lineage development and cell fate decisions across an entire organism. The datasets from profiling based on human developmental organs have been critical in interpreting recent multi-organ developmental atlases<sup>55,118</sup>.

There are several large-scale organ-based studies being undertaken by HDCA researchers. These include the NIH 'Brain Research through Advancing Innovative Neurotechnologies' (BRAIN) initiative (including the BRAIN Initiative Cell Census Network (BICCN) consortium) focusing on the developing human cortex; the Swedish Human Cell Atlas consortium performing large-scale scRNA-seq, assay for transposase-accessible chromatin using sequencing (ATAC-seq) and spatial-omic analyses of the developing human brain, heart<sup>119</sup> and lung during the first trimester; the French HuDeCA consortium mapping eight first-trimester human organs using 3D imaging and scRNA-seq; the European Union (EU) Horizon 2020-funded developing brain (Braintime) and gonad (HUGODECA) projects; the NIH Developmental Genotype-Tissue Expression (dGTEx)<sup>120</sup> project; and UK consortia funded by the Wellcome Trust and Medical Research Council. The logical next step will be to coordinate these efforts and extend the current approach to contextualize the development of different cell lineages across all organs.

However, multi-organ approaches do not permit the analysis of distributed tissue networks as a continuum from a single donor sample. Whole-embryo analysis has been limited to very early preimplantation samples<sup>88,121,122</sup> and one gastrulation-stage embryo<sup>123</sup>. Multi-omics suspension and spatial-genomics profiling of anatomically dissected units from whole human embryos at six to seven weeks after conception are being undertaken by the HDCA researchers based in the UK. We anticipate a first whole human embryo profiling within the next two years. On the basis of existing HDCA data and the rapid changes during early development, we propose a minimum of three replicates for each biologically relevant gestation period (for example, each week from six weeks after conception). All such data produced and shared by the global research community (formally registered with the HCA or not) contributes to the HDCA. Defining a universal organizing framework for these data will enable them to be unified into a complete atlas that will be a transformative resource for the research and clinical communities.

## Supplementary Material

Refer to Web version on PubMed Central for supplementary material.

## Authors

Muzlifah Haniffa<sup>1,2,3,45,✉</sup>, Deanne Taylor<sup>4,5,45</sup>, Sten Linnarsson<sup>6,45</sup>, Bruce J. Aronow<sup>7</sup>, Gary D. Bader<sup>8</sup>, Roger A. Barker<sup>9,10</sup>, Pablo G. Camara<sup>11</sup>, J. Gray Camp<sup>12</sup>, Alain Chédotal<sup>13</sup>, Andrew Copp<sup>14</sup>, Heather C. Etchevers<sup>15</sup>, Paolo Giacobini<sup>16</sup>, Berthold Göttgens<sup>9,17</sup>, Guoji Guo<sup>18</sup>, Ania Hupalowska<sup>19</sup>, Kylie R. James<sup>2</sup>, Emily Kirby<sup>20</sup>, Arnold Kriegstein<sup>21</sup>, Joakim Lundeberg<sup>22</sup>, John C. Marioni<sup>23</sup>, Kerstin B. Meyer<sup>2</sup>, Kathy K. Niakan<sup>24,25</sup>, Mats Nilsson<sup>26</sup>, Bayanne Olabi<sup>1</sup>, Dana Pe'er<sup>27</sup>, Aviv Regev<sup>19,28,44</sup>, Jennifer Rood<sup>19</sup>, Orit Rozenblatt-Rosen<sup>19,44</sup>, Rahul Satija<sup>29</sup>, Sarah A. Teichmann<sup>2,30</sup>, Barbara Treutlein<sup>31</sup>, Roser Vento-Tormo<sup>2</sup>, Simone Webb<sup>1</sup>, Pascal Barbry<sup>32</sup>, Omer Bayraktar<sup>2</sup>, Sam Behjati<sup>2</sup>, Andreas Bosio<sup>33</sup>, Bruno Canque<sup>34</sup>, Frédéric Chalmel<sup>35</sup>, Yorick Gitton<sup>13</sup>, Deborah Henderson<sup>1</sup>, Anne Jorgensen<sup>36</sup>, Steven Lisgo<sup>1</sup>, Jinyue Liu<sup>37</sup>, Emma Lundberg<sup>22</sup>, Jean-Léon Maitre<sup>38</sup>, Séverine Mazaud-Guittot<sup>35</sup>, Elizabeth Robertson<sup>39</sup>, Antoine Rolland<sup>35</sup>, Raphael Scharfmann<sup>40</sup>, Michèle Souyri<sup>41</sup>, Erik Sundström<sup>42</sup>, Stéphane Zaffran<sup>15</sup>, Matthias Zilbauer<sup>42,43</sup>,

Human Cell Atlas Developmental Biological Network\*

## Affiliations

<sup>1</sup>Biosciences Institute, Newcastle University, Newcastle upon Tyne, UK.

<sup>2</sup>Wellcome Sanger Institute, Hinxton, UK.

<sup>3</sup>Department of Dermatology and NIHR Newcastle Biomedical Research Centre, Newcastle Hospitals NHS Foundation Trust, Newcastle upon Tyne, UK.

<sup>4</sup>Department of Biomedical and Health Informatics (DBHi), The Children's Hospital of Philadelphia, Philadelphia, PA, USA.

<sup>5</sup>Department of Pediatrics, University of Pennsylvania Perelman School of Medicine, Philadelphia, PA, USA.

<sup>6</sup>Division of Molecular Neurobiology, Department of Medical Biochemistry and Biophysics, Karolinska Institutet, Stockholm, Sweden.

<sup>7</sup>Division of Developmental Biology and Biomedical Informatics, Cincinnati Children's Hospital Medical Centre, Cincinnati, OH, USA.

<sup>8</sup>The Donnelly Centre, University of Toronto, Toronto, Ontario, Canada.

<sup>9</sup>Wellcome and MRC Cambridge Stem Cell Institute, University of Cambridge, Cambridge, UK.

<sup>10</sup>Department of Clinical Neurosciences, University of Cambridge, Cambridge, UK.

<sup>11</sup>Department of Genetics, University of Pennsylvania Perelman School of Medicine, Philadelphia, PA, USA.

<sup>12</sup>Institute of Molecular and Clinical Ophthalmology Basel (IOB), University of Basel, Basel, Switzerland.

<sup>13</sup>INSERM, CNRS, Institut de la Vision, Sorbonne Université, Paris, France.

- <sup>14</sup>Developmental Biology and Cancer Programme, UCL Great Ormond Street Institute of Child Health, London, UK.
- <sup>15</sup>MMG, INSERM, U1251, Aix Marseille Université, Marseille, France.
- <sup>16</sup>Laboratory of Development and Plasticity of the Neuroendocrine Brain, Inserm, CHU Lille, Lille Neuroscience and Cognition, UMR-S 1172, Université Lille, Lille, France.
- <sup>17</sup>Department of Haematology, University of Cambridge, Cambridge, UK.
- <sup>18</sup>Center for Stem Cell and Regenerative Medicine, Zhejiang University School of Medicine, Hangzhou, China.
- <sup>19</sup>Klarman Cell Observatory, Broad Institute of Harvard and MIT, Cambridge, MA, USA.
- <sup>20</sup>Centre of Genomics and Policy, McGill University, Montreal, Quebec, Canada.
- <sup>21</sup>Department of Neurology, University of California San Francisco (UCSF), San Francisco, CA, USA.
- <sup>22</sup>Science for Life Laboratory, KTH Royal Institute of Technology, Solna, Sweden.
- <sup>23</sup>Cancer Research Institute UK Cambridge Institute, University of Cambridge, Cambridge, UK.
- <sup>24</sup>Francis Crick Institute, London, UK.
- <sup>25</sup>Centre for Trophoblast Research, Department of Physiology, Development and Neuroscience, University of Cambridge, Cambridge, UK.
- <sup>26</sup>Science for Life Laboratory, Department of Biochemistry and Biophysics, Stockholm University, Stockholm, Sweden.
- <sup>27</sup>Computational and Systems Biology Program, Sloan Kettering Institute, Memorial Sloan Kettering Cancer Center, New York, NY, USA.
- <sup>28</sup>Department of Biology, Massachusetts Institute of Technology, Cambridge, MA, USA.
- <sup>29</sup>New York Genome Center, New York University, New York, NY, USA.
- <sup>30</sup>Cavendish Laboratory, Department of Physics, University of Cambridge, Cambridge, UK.
- <sup>31</sup>Department of Biosystems Science and Engineering, Eidgenössische Technische Hochschule (ETH) Zurich, Basel, Switzerland.
- <sup>32</sup>Institut de Pharmacologie Moléculaire et Cellulaire, UMR7275, CNRS/UNS, Université Côte d'Azur, Valbonne, France.
- <sup>33</sup>Miltenyi Biotec B.V. & Co. KG, Bergisch Gladbach, Germany.

<sup>34</sup>Laboratoire Développement du Système Immunitaire, Ecole Pratique des Hautes Etudes, INSERM U976, Institut de Recherche Saint Louis, Centre Hayem, Hôpital Saint Louis 1, Paris, France.

<sup>35</sup>Inserm, EHESP, Irset (Institut de recherche en santé, environnement et travail) UMR\_S 1085, Université Rennes, Rennes, France.

<sup>36</sup>University Department of Growth and Reproduction, EDMaRC, Rigshospitalet, University of Copenhagen, Copenhagen, Denmark.

<sup>37</sup>Genome Institute of Singapore, Singapore, Singapore.

<sup>38</sup>Institut Curie, Paris, France.

<sup>39</sup>Sir William Dunn School of Pathology, University of Oxford, Oxford, UK.

<sup>40</sup>U1016 INSERM Institut Cochin, Groupe Hospitalier Cochin Port Royal, Paris, France.

<sup>41</sup>INSERM UMRS 1131, Institut de Recherche Saint Louis, Paris, France.

<sup>42</sup>Division of Neurobiology, Care Sciences and Society, Karolinska Institutet, Stockholm, Sweden.

<sup>43</sup>University of Cambridge, Cambridge, UK.

<sup>44</sup>Present address: Genentech, South San Francisco, CA, USA.

<sup>45</sup>These authors jointly supervised this work: Muzlifah Haniffa, Deanne Taylor, Sten Linnarsson.

## Acknowledgements

The HDCA initiative receives funding from Wellcome, the UK Research and Innovation Medical Research Council, EU Horizon 2020, INSERM (HuDeCA) and the Knut and Alice Wallenberg and Erling-Persson foundations. We thank the HCA Executive Office and T. Andrews for their support. This publication is part of the Human Cell Atlas - <https://www.humancellatlas.org/publications/>

## References

- Behjati S, Lindsay S, Teichmann SA & Haniffa M Mapping human development at single-cell resolution. *Development* 145, dev152561 (2018). [PubMed: 29439135]
- Vladoiu MC et al. Childhood cerebellar tumours mirror conserved fetal transcriptional programs. *Nature* 572, 67–73 (2019). [PubMed: 31043743]
- Velmeshev D et al. Single-cell genomics identifies cell type-specific molecular changes in autism. *Science* 364, 685–689 (2019). [PubMed: 31097668]
- Gulsuner S et al. Spatial and temporal mapping of de novo mutations in schizophrenia to a fetal prefrontal cortical network. *Cell* 154, 518–529 (2013). [PubMed: 23911319]
- Simmons RA Developmental origins of adult disease. *Pediatr. Clin. North Am* 56, 449–466 (2009). [PubMed: 19501686]
- Laughney AM et al. Regenerative lineages and immune-mediated pruning in lung cancer metastasis. *Nat. Med* 26, 259–269 (2020). [PubMed: 32042191]
- Sozen B, Jorgensen V, Zhu M, Cui T & Zernicka-Goetz M Reconstructing human early embryogenesis in vitro with pluripotent stem cells Preprint at 10.1101/2021.03.12.435175 (2021).
- Yu L et al. Blastocyst-like structures generated from human pluripotent stem cells. *Nature* 591, 620–626 (2021). [PubMed: 33731924]

9. Liu X et al. Modelling human blastocysts by reprogramming fibroblasts into iBlastoids. *Nature* 591, 627–632 (2021). [PubMed: 33731926]
10. Simunovic M et al. A 3D model of a human epiblast reveals BMP4-driven symmetry breaking. *Nat. Cell Biol* 21, 900–910 (2019). [PubMed: 31263269]
11. Moris N et al. An in vitro model of early anteroposterior organization during human development. *Nature* 582, 410–415 (2020). [PubMed: 32528178]
12. Shao Y et al. A pluripotent stem cell-based model for post-implantation human amniotic sac development. *Nat. Commun* 8, 208 (2017). [PubMed: 28785084]
13. Warmflash A, Sorre B, Etoc F, Siggia ED & Brivanlou AH A method to recapitulate early embryonic spatial patterning in human embryonic stem cells. *Nat. Methods* 11, 847–854 (2014). [PubMed: 24973948]
14. Camp JG, Wollny D & Treutlein B Single-cell genomics to guide human stem cell and tissue engineering. *Nat. Methods* 15, 661–667 (2018). [PubMed: 30171231] This review highlights the potential utility of single-cell genomics to optimize cell and tissue engineering, with a focus on emerging methodologies that can guide this process (such as transcription factor combinatorics, spatial reconstruction, CRISPR–Cas9 screens and lineage-coupled transcriptomics).
15. Morgan L *Icons of Life: A Cultural History of Human Embryos* (Univ. California Press, 2009).
16. Blonder LX *Morphogenesis: The cellular and molecular processes of developmental anatomy*. By Jonathan Bard. xi 313 pp. New York: Cambridge University Press. 1990. \$37.95. (paper). *Am. J. Hum. Biol* 5, 245–246 (1993).
17. Aldridge S & Teichmann SA Single cell transcriptomics comes of age. *Nat. Commun* 11, 4307 (2020). [PubMed: 32855414]
18. Human Cell Atlas. Home, <https://www.humancellatlas.org/> (2021).
19. Regev A et al. Science forum: the human cell atlas. *eLife* 6, e27041 (2017). [PubMed: 29206104]
20. The HCA Consortium. The Human Cell Atlas White Paper, [https://www.humancellatlas.org/wp-content/uploads/2019/11/HCA\\_WhitePaper\\_18Oct2017-copyright.pdf](https://www.humancellatlas.org/wp-content/uploads/2019/11/HCA_WhitePaper_18Oct2017-copyright.pdf) (2019).
21. Human Cell Atlas. Register, <https://www.humancellatlas.org/register> (2021).
22. Bock C et al. The organoid cell atlas. *Nat. Biotechnol* 39, 13–17 (2021). [PubMed: 33384458]
23. Subbaraman N Lab-grown structures mimic human embryo’s earliest stage yet. *Nature* 591, 510–511 (2021). [PubMed: 33731911]
24. Trust Wellcome. Sharing Data from Large-scale Biological Research Projects: A System of Tripartite Responsibility, <http://www.genome.gov/Pages/Research/WellcomeReport0303.pdf> (Wellcome Trust, 2003).
25. Gerrelli D, Lisgo S, Copp AJ & Lindsay S Enabling research with human embryonic and fetal tissue resources. *Development* 142, 3073–3076 (2015). [PubMed: 26395135] The HDBR is a biobank that collects and distributes material for research from human embryos (from 4 weeks after conception) and fetuses (up to 22 weeks after conception); <https://www.hdbr.org/> shows the range of facilities offered by the HDBR and provides access for prospective users.
26. Human Cell Atlas. Ethics, <https://www.humancellatlas.org/ethics/> (2021).
27. Huang Q et al. Intravital imaging of mouse embryos. *Science* 368, 181–186 (2020). [PubMed: 32273467]
28. Mereu E et al. Benchmarking single-cell RNA-sequencing protocols for cell atlas projects. *Nat. Biotechnol* 38, 747–755 (2020). [PubMed: 32518403]
29. Argelaguet R et al. Multi-omics profiling of mouse gastrulation at single-cell resolution. *Nature* 576, 487–491 (2019). [PubMed: 31827285]
30. Cao J et al. Comprehensive single-cell transcriptional profiling of a multicellular organism. *Science* 357, 661–667 (2017). [PubMed: 28818938]
31. McGinnis CS et al. MULTI-seq: sample multiplexing for single-cell RNA sequencing using lipid-tagged indices. *Nat. Methods* 16, 619–626 (2019). [PubMed: 31209384]
32. Fujii M, Clevers H & Sato T Modeling human digestive diseases with CRISPR-Cas9-modified organoids. *Gastroenterology* 156, 562–576 (2019). [PubMed: 30476497]

33. Artegiani B et al. Fast and efficient generation of knock-in human organoids using homology-independent CRISPR–Cas9 precision genome editing. *Nat. Cell Biol* 22, 321–331 (2020). [PubMed: 32123335]
34. Lee-Six H et al. Population dynamics of normal human blood inferred from somatic mutations. *Nature* 561, 473–478 (2018). [PubMed: 30185910]
35. D’Gama AM & Walsh CA Somatic mosaicism and neurodevelopmental disease. *Nat. Neurosci* 21, 1504–1514 (2018). [PubMed: 30349109]
36. Ludwig LS et al. Lineage tracing in humans enabled by mitochondrial mutations and single-cell genomics. *Cell* 176, 1325–1339 (2019). [PubMed: 30827679]
37. Lareau CA et al. Massively parallel single-cell mitochondrial DNA genotyping and chromatin profiling. *Nat. Biotechnol* 39, 451–461 (2021). [PubMed: 32788668]
38. Ståhl PL et al. Visualization and analysis of gene expression in tissue sections by spatial transcriptomics. *Science* 353, 78–82 (2016). [PubMed: 27365449]
39. Wang X et al. Three-dimensional intact-tissue sequencing of single-cell transcriptional states. *Science* 361, eaat5691 (2018). [PubMed: 29930089]
40. Ueda HR et al. Tissue clearing and its applications in neuroscience. *Nat. Rev. Neurosci* 21, 61–79 (2020). [PubMed: 31896771]
41. Yang B et al. Single-cell phenotyping within transparent intact tissue through whole-body clearing. *Cell* 158, 945–958 (2014). [PubMed: 25088144]
42. Sylwestrak EL, Rajasethupathy P, Wright MA, Jaffe A & Deisseroth K Multiplexed intact-tissue transcriptional analysis at cellular resolution. *Cell* 164, 792–804 (2016). [PubMed: 26871636]
43. Casoni F et al. Development of the neurons controlling fertility in humans: new insights from 3D imaging and transparent fetal brains. *Development* 143, 3969–3981 (2016). [PubMed: 27803058]
44. Belle M et al. Tridimensional visualization and analysis of early human development. *Cell* 169, 161–173 (2017). [PubMed: 28340341] A 3D map of first-trimester human development by tissue clearing and light-sheet imaging, providing high-resolution images of the developing cardiopulmonary, vascular, peripheral nervous, muscular and urogenital systems, as well as insights into complex processes such as skin innervation and the differential vascularization of male and female genital systems.
45. Zhao S et al. Cellular and molecular probing of intact human organs. *Cell* 180, 796–812 (2020). [PubMed: 32059778]
46. Todorov MI et al. Machine learning analysis of whole mouse brain vasculature. *Nat. Methods* 17, 442–449 (2020). [PubMed: 32161395]
47. Kirst C et al. Mapping the fine-scale organization and plasticity of the brain vasculature. *Cell* 180, 780–795 (2020). [PubMed: 32059781]
48. Gracia M et al. Mechanical impact of epithelial-mesenchymal transition on epithelial morphogenesis in *Drosophila*. *Nat. Commun* 10, 2951 (2019). [PubMed: 31273212]
49. Dumortier JG et al. Hydraulic fracturing and active coarsening position the lumen of the mouse blastocyst. *Science* 365, 465–468 (2019). [PubMed: 31371608]
50. Shahbazi MN, Siggia ED & Zernicka-Goetz M Self-organization of stem cells into embryos: a window on early mammalian development. *Science* 364, 948–951 (2019). [PubMed: 31171690]
51. Rood JE et al. Toward a common coordinate framework for the human body. *Cell* 179, 1455–1467 (2019). [PubMed: 31835027]
52. Bonneel N Optimal Transport for Computer Graphics and Temporal Coherence of Image Processing Algorithms. PhD thesis, Sorbonne Univ. (2018).
53. Wilkinson MD et al. The FAIR guiding principles for scientific data management and stewardship. *Sci. Data* 3, 160018 (2016). [PubMed: 26978244]
54. Popescu D-M et al. Decoding human fetal liver haematopoiesis. *Nature* 574, 365–371 (2019). [PubMed: 31597962] A detailed single-cell characterization of fetal liver blood and immune-cell development, revealing inferred differentiation trajectories from haematopoietic stem cells and gestation-specific potential for the differentiation of haematopoietic stem cells.

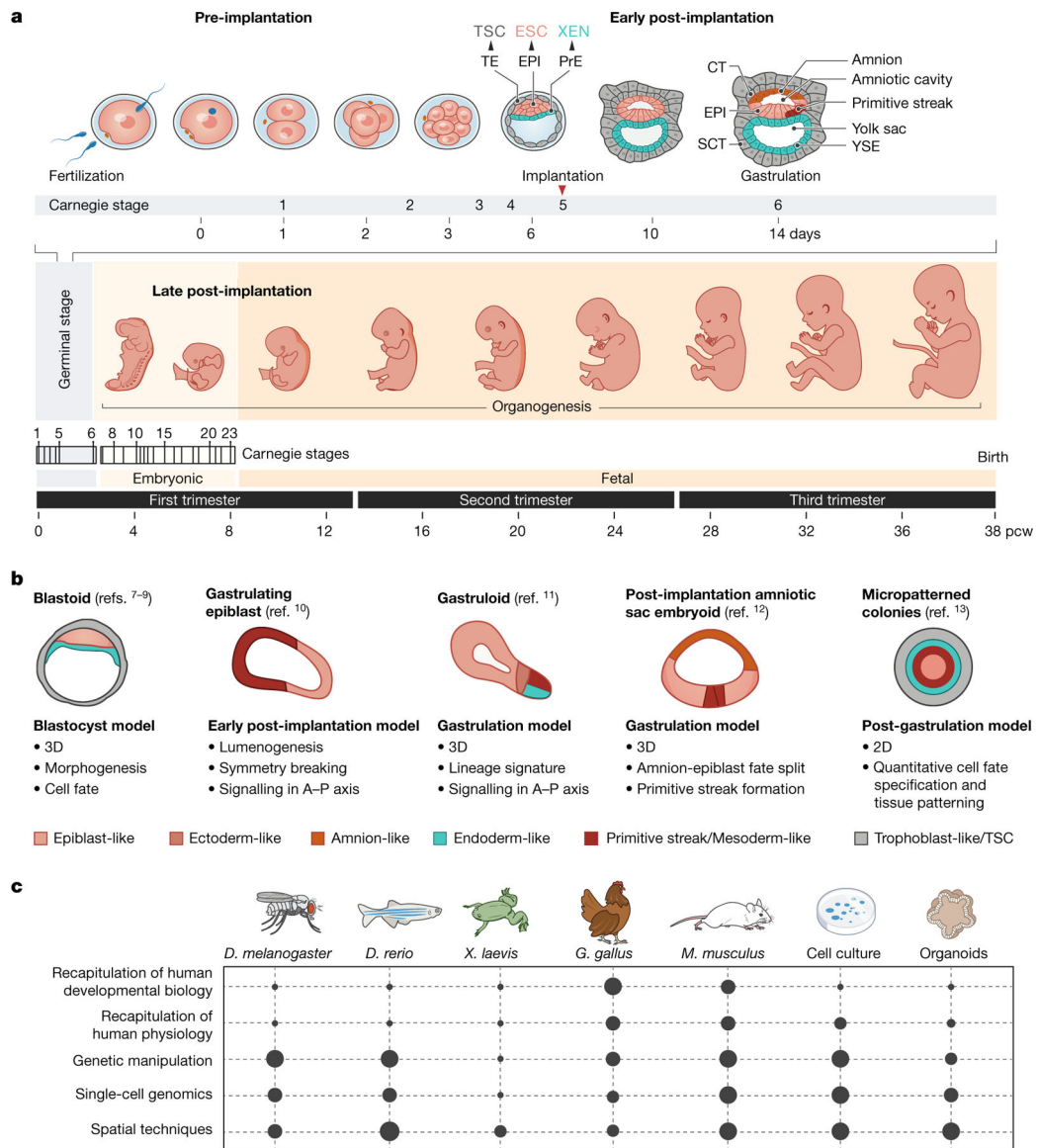
55. Cao J et al. A human cell atlas of fetal gene expression. *Science* 370, eaba7721 (2020). [PubMed: 33184181] One of a set of two studies focusing on integrating single-cell gene expression<sup>55</sup> and chromatin accessibility<sup>118</sup> from 15 first- and second-trimester human organs.
56. Vento-Tormo R et al. Single-cell reconstruction of the early maternal-fetal interface in humans. *Nature* 563, 347–353 (2018). [PubMed: 30429548] A detailed scRNA-seq analysis of first-trimester decidua and placenta, highlighting the cell–cell interactions that take place at the maternal–fetal interface during human development using a receptor–ligand database (CellPhoneDB).
57. Suryawanshi H et al. A single-cell survey of the human first-trimester placenta and decidua. *Sci. Adv* 4, eaau4788 (2018). [PubMed: 30402542]
58. Holloway EM et al. Mapping development of the human intestinal niche at single-cell resolution. *Cell Stem Cell* 28, 568–580 (2021). [PubMed: 33278341]
59. Pollen AA et al. Low-coverage single-cell mRNA sequencing reveals cellular heterogeneity and activated signaling pathways in developing cerebral cortex. *Nat. Biotechnol* 32, 1053–1058 (2014). [PubMed: 25086649]
60. Han X et al. Construction of a human cell landscape at single-cell level. *Nature* 581, 303–309 (2020). [PubMed: 32214235] A single-cell gene expression study of multiple organs during first- and second-trimester human development, with comparative analyses between human and mouse to identify conserved genetic networks.
61. Stewart BJ et al. Spatiotemporal immune zonation of the human kidney. *Science* 365, 1461–1466 (2019). [PubMed: 31604275]
62. Cui Y et al. Single-cell transcriptome analysis maps the developmental track of the human heart. *Cell Rep* 26, 1934–1950 (2019). [PubMed: 30759401]
63. La Manno G et al. Molecular diversity of midbrain development in mouse, human, and stem cells. *Cell* 167, 566–580 (2016). [PubMed: 27716510]
64. Elmentaite R, Ross A, James KR, Ortmann D & Gomes T Single-cell sequencing of developing human gut reveals transcriptional links to childhood Crohn’s disease. *Dev. Cell* 55, 771–783 (2020). [PubMed: 33290721]
65. Young MD et al. Single-cell transcriptomes from human kidneys reveal the cellular identity of renal tumors. *Science* 361, 594–599 (2018). [PubMed: 30093597] Comparative single-cell analyses of fetal, paediatric and adult kidneys and of Wilms’ tumours, demonstrating the origin of Wilms’ tumour as aberrant nephron development.
66. Vértesy Á et al. Parental haplotype-specific single-cell transcriptomics reveal incomplete epigenetic reprogramming in human female germ cells. *Nat. Commun* 9, 1873 (2018). [PubMed: 29760424]
67. Li L et al. Single-cell RNA-seq analysis maps development of human germline cells and gonadal niche interactions. *Cell Stem Cell* 20, 858–873 (2017). [PubMed: 28457750]
68. Nowakowski TJ et al. Spatiotemporal gene expression trajectories reveal developmental hierarchies of the human cortex. *Science* 358, 1318–1323 (2017). [PubMed: 29217575]
69. Camp JG et al. Human cerebral organoids recapitulate gene expression programs of fetal neocortex development. *Proc. Natl Acad. Sci. USA* 112, 15672–15677 (2015). [PubMed: 26644564]
70. Lu Y et al. Single-cell analysis of human retina identifies evolutionarily conserved and species-specific mechanisms controlling development. *Dev. Cell* 53, 473–491 (2020). [PubMed: 32386599]
71. Tiklová K et al. Single-cell RNA sequencing reveals midbrain dopamine neuron diversity emerging during mouse brain development. *Nat. Commun* 10, 581 (2019). [PubMed: 30718509]
72. Kee N et al. Single-cell analysis reveals a close relationship between differentiating dopamine and subthalamic nucleus neuronal lineages. *Cell Stem Cell* 20, 29–40 (2017). [PubMed: 28094018]
73. Rosenberg AB, Roco CM, Muscat RA & Kuchina A Single-cell profiling of the developing mouse brain and spinal cord with split-pool barcoding. *Science* 360, 176–182 (2018). [PubMed: 29545511]
74. Carter RA et al. A single-cell transcriptional atlas of the developing murine cerebellum. *Curr. Biol* 28, 2910–2920 (2018). [PubMed: 30220501]

75. Huisman C et al. Single cell transcriptome analysis of developing arcuate nucleus neurons uncovers their key developmental regulators. *Nat. Commun* 10, 3696 (2019). [PubMed: 31420539]
76. Utz SG et al. Early fate defines microglia and non-parenchymal brain macrophage development. *Cell* 181, 557–573 (2020). [PubMed: 32259484]
77. Ginhoux F & Jung S Monocytes and macrophages: developmental pathways and tissue homeostasis. *Nat. Rev. Immunol* 14, 392–404 (2014). [PubMed: 24854589]
78. Park J-E et al. A cell atlas of human thymic development defines T cell repertoire formation. *Science* 367, eaay3224 (2020). [PubMed: 32079746]
79. Rossant J & Tam PPL New insights into early human development: lessons for stem cell derivation and differentiation. *Cell Stem Cell* 20, 18–28 (2017). [PubMed: 28061351]
80. Rayon T et al. Species-specific pace of development is associated with differences in protein stability. *Science* 369, eaba7667 (2020). [PubMed: 32943498]
81. Matsuda M et al. Species-specific segmentation clock periods are due to differential biochemical reaction speeds. *Science* 369, 1450–1455 (2020). [PubMed: 32943519]
82. Pijuan-Sala B et al. A single-cell molecular map of mouse gastrulation and early organogenesis. *Nature* 566, 490–495 (2019). [PubMed: 30787436] A densely sampled time-course analysis covering mouse gastrulation and early organogenesis provides an scRNA-seq reference atlas, which is then exploited to provide insights into early blood and endothelial development through parallel analysis of mouse chimeras that lack the key regulator TAL1 (also known as SCL).
83. Wagner DE et al. Single-cell mapping of gene expression landscapes and lineage in the zebrafish embryo. *Science* 360, 981–987 (2018). [PubMed: 29700229]
84. Briggs JA et al. The dynamics of gene expression in vertebrate embryogenesis at single-cell resolution. *Science* 360, eaar5780 (2018). [PubMed: 29700227]
85. Cao J et al. The single-cell transcriptional landscape of mammalian organogenesis. *Nature* 566, 496–502 (2019). [PubMed: 30787437]
86. Cusanovich DA et al. The cis-regulatory dynamics of embryonic development at single-cell resolution. *Nature* 555, 538–542 (2018). [PubMed: 29539636]
87. Lescroart F et al. Defining the earliest step of cardiovascular lineage segregation by single-cell RNA-seq. *Science* 359, 1177–1181 (2018). [PubMed: 29371425]
88. Blakeley P et al. Defining the three cell lineages of the human blastocyst by single-cell RNA-seq. *Development* 142, 3151–3165 (2015). [PubMed: 26293300]
89. Deglincerti A et al. Self-organization of the in vitro attached human embryo. *Nature* 533, 251–254 (2016). [PubMed: 27144363]
90. Matsuda M et al. Recapitulating the human segmentation clock with pluripotent stem cells. *Nature* 580, 124–129 (2020). [PubMed: 32238941]
91. Diaz-Cuadros M et al. In vitro characterization of the human segmentation clock. *Nature* 580, 113–118 (2020). [PubMed: 31915384]
92. Koike H et al. Modelling human hepato-biliary-pancreatic organogenesis from the foregut-midgut boundary. *Nature* 574, 112–116 (2019). [PubMed: 31554966]
93. Lee J et al. Hair-bearing human skin generated entirely from pluripotent stem cells. *Nature* 582, 399–404 (2020). [PubMed: 32494013]
94. Spence JR et al. Directed differentiation of human pluripotent stem cells into intestinal tissue in vitro. *Nature* 470, 105–109 (2011). [PubMed: 21151107]
95. Marton RM & Paccani SP Organoid and assembloid technologies for investigating cellular crosstalk in human brain development and disease. *Trends Cell Biol* 30, 133–143 (2020). [PubMed: 31879153]
96. Lancaster MA et al. Cerebral organoids model human brain development and microcephaly. *Nature* 501, 373–379 (2013). [PubMed: 23995685]
97. Quadrato G et al. Cell diversity and network dynamics in photosensitive human brain organoids. *Nature* 545, 48–53 (2017). [PubMed: 28445462]
98. Wimmer RA et al. Human blood vessel organoids as a model of diabetic vasculopathy. *Nature* 565, 505–510 (2019). [PubMed: 30651639]



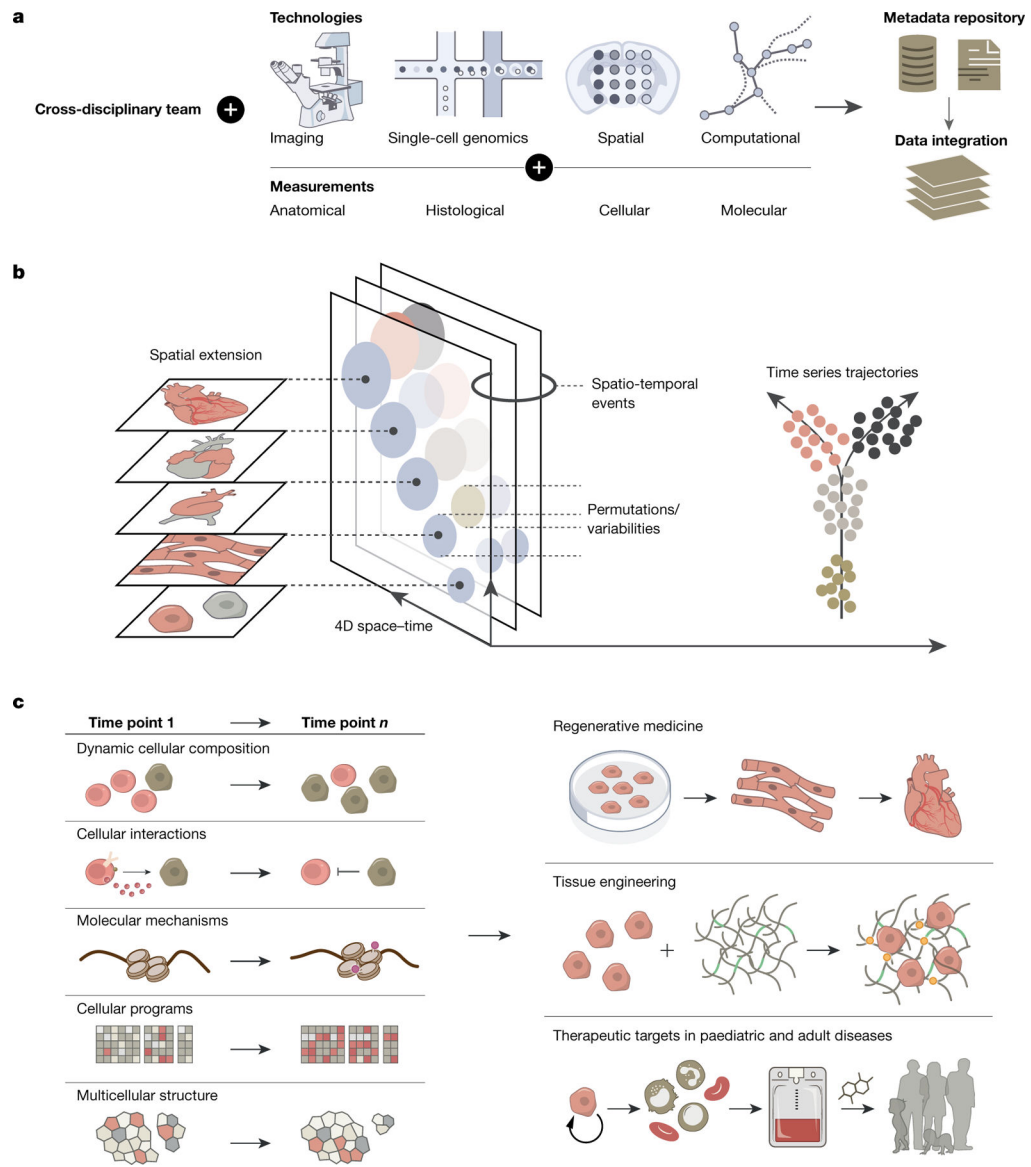
99. Bhaduri A et al. Cell stress in cortical organoids impairs molecular subtype specification. *Nature* 578, 142–148 (2020). [PubMed: 31996853]
100. Homsy J et al. De novo mutations in congenital heart disease with neurodevelopmental and other congenital anomalies. *Science* 350, 1262–1266 (2015). [PubMed: 26785492]
101. Barnat M et al. Huntington’s disease alters human neurodevelopment. *Science* 369, 787–793 (2020). [PubMed: 32675289]
102. Zhang S-Y et al. Human inborn errors of immunity to infection affecting cells other than leukocytes: from the immune system to the whole organism. *Curr. Opin. Immunol* 59, 88–100 (2019). [PubMed: 31121434]
103. Croft B et al. Human sex reversal is caused by duplication or deletion of core enhancers upstream of SOX9. *Nat. Commun* 9, 5319 (2018). [PubMed: 30552336]
104. Taylor DM et al. The pediatric cell atlas: defining the growth phase of human development at single-cell resolution. *Dev. Cell* 49, 10–29 (2019). [PubMed: 30930166]
105. Haendel M et al. How many rare diseases are there? *Nat. Rev. Drug Discov* 19, 77–78 (2020). [PubMed: 32020066]
106. Ly A et al. DSCAM is a netrin receptor that collaborates with DCC in mediating turning responses to netrin-1. *Cell* 133, 1241–1254 (2008). [PubMed: 18585357]
107. Yamagishi H & Srivastava D Unraveling the genetic and developmental mysteries of 22q11 deletion syndrome. *Trends Mol. Med* 9, 383–389 (2003). [PubMed: 13129704]
108. Biswas AB & Furniss F Cognitive phenotype and psychiatric disorder in 22q11.2 deletion syndrome: a review. *Res. Dev. Disabil* 53–54, 242–257 (2016).
109. Jessa S et al. Stalled developmental programs at the root of pediatric brain tumors. *Nat. Genet* 51, 1702–1713 (2019). [PubMed: 31768071]
110. Tirosh I et al. Single-cell RNA-seq supports a developmental hierarchy in human oligodendrogloma. *Nature* 539, 309–313 (2016). [PubMed: 27806376]
111. Hovestadt V et al. Medulloblastomics revisited: biological and clinical insights from thousands of patients. *Nat. Rev. Cancer* 20, 42–56 (2020). [PubMed: 31819232]
112. Phillips HS et al. Molecular subclasses of high-grade glioma predict prognosis, delineate a pattern of disease progression, and resemble stages in neurogenesis. *Cancer Cell* 9, 157–173 (2006). [PubMed: 16530701]
113. Sharma A et al. Onco-fetal reprogramming of endothelial cells drives immunosuppressive macrophages in hepatocellular carcinoma. *Cell* 183, 377–394 (2020). [PubMed: 32976798]
114. Reynolds G et al. Developmental cell programs are co-opted in inflammatory skin disease. *Science* 371, eaba6500 (2021). [PubMed: 33479125] Comparative analyses of fetal skin with healthy and diseased adult skin, revealing the co-option of developmental cell programs in two common inflammatory skin conditions (atopic dermatitis and psoriasis).
115. Sungnak W et al. SARS-CoV-2 entry factors are highly expressed in nasal epithelial cells together with innate immune genes. *Nat. Med* 26, 681–687 (2020). [PubMed: 32327758]
116. Barker RA, Parmar M, Studer L & Takahashi J Human trials of stem cell-derived dopamine neurons for Parkinson’s disease: dawn of a new era. *Cell Stem Cell* 21, 569–573 (2017). [PubMed: 29100010]
117. Takahashi J Preparing for first human trial of induced pluripotent stem cell-derived cells for Parkinson’s disease: an interview with Jun Takahashi. *Regen. Med* 14, 93–95 (2019). [PubMed: 30644333]
118. Domcke S et al. A human cell atlas of fetal chromatin accessibility. *Science* 370, eaba7612 (2020). [PubMed: 33184180]
119. Asp M et al. A spatiotemporal organ-wide gene expression and cell atlas of the developing human heart. *Cell* 179, 1647–1660 (2019). [PubMed: 31835037] A temporal and 3D spatial map of the developing human heart from the first trimester by using a combination of transcriptome-wide scRNA-seq and spatial transcriptomics methods with cellular validation by in situ sequencing.
120. NHGRI & NICHD. Developmental Genotype-Tissue Expression (dGTEx) <https://www.genome.gov/Funded-Programs-Projects/Developmental-Genotype-Tissue-Expression> (2020).

121. Yan L et al. Single-cell RNA-seq profiling of human preimplantation embryos and embryonic stem cells. *Nat. Struct. Mol. Biol* 20, 1131–1139 (2013). [PubMed: 23934149] A comprehensive scRNA-seq analysis of human oocytes to blastocyst-stage embryos that has widely been used to investigate lineage-associated gene expression and as a comparative analysis to human pluripotent stem cell lines.
122. Petropoulos S et al. Single-cell RNA-seq reveals lineage and X chromosome dynamics in human preimplantation embryos. *Cell* 165, 1012–1026 (2016). [PubMed: 27062923]
123. Tyser RCV et al. A spatially resolved single cell atlas of human gastrulation Preprint at [10.1101/2020.07.21.213512](https://doi.org/10.1101/2020.07.21.213512) (2020).
124. Elmentaite R et al. Cells of the human intestinal tract mapped across space and time. *Nature*, [10.1038/s41586-021-03852-1](https://doi.org/10.1038/s41586-021-03852-1) (2021).



**Fig. 1 | Human embryo development and model systems.**

**a**, Timeline of human development from fertilization to birth. CT, cytotrophoblast; ESC, embryonic stem cell; EPI, epiblast; PrE, primitive endoderm; pcw, post-conception weeks; SCT, syncytiotrophoblast; TE, trophoctoderm; TSC, trophoblast stem cell; XEN, extraembryonic endoderm; YSE, yolk sac endoderm. **b**, Models derived from human stem cells, and associated studies. In vitro model systems to study early embryonic development. A–P, anterior– posterior. **c**, Experimental model systems to study development, including *Drosophila melanogaster*, *Danio rerio*, *Xenopus laevis*, *Gallus gallus*, *Mus musculus*, cell culture and organoids, and their amenability to facilitating various aspects of scientific study.



**Fig. 2 | Building the HDCA.**

**a**, ‘How to build an atlas’ modules, including an interdisciplinary team (biological disciplines, clinical specialities, computational scientists and technology engineers), multimodal technologies and integration of data across platforms. **b**, Key features of the HDCA. Single-cell measurements across three-dimensional space (alongside a fourth dimension of time) allow for the capture of dynamic developmental processes, including cell proliferation, migration and regulation. Spatial extension captures cell proliferation (changes in organ size and shape), and the sensing and control of morphogenesis; spatio-temporal events include cell differentiation and replication, and changes in cellular composition and gene expression. Permutations and variabilities outline the spatial determinants of cell differentiation, mechanical adhesive feedback and heterocellular signalling by ligands. Time series trajectories reveal fate-biased migrating progenitors, lineage specifications and cell migration. **c**, Utility and applications of the HDCA: cellular and molecular biological

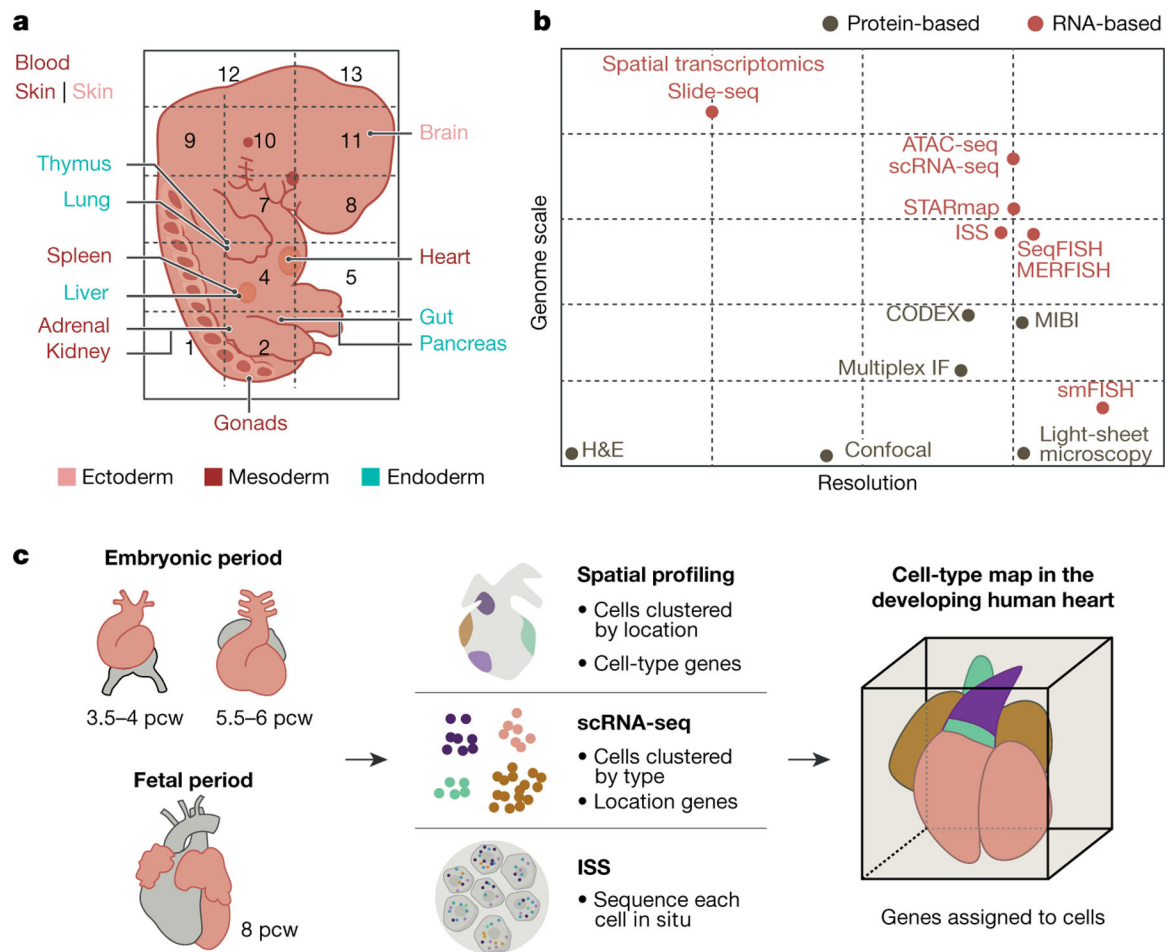
insights into the coordination of organ development across the whole embryo (left) are applied to advance regenerative medicine, tissue engineering and therapeutic strategies (right).

Author Manuscript

Author Manuscript

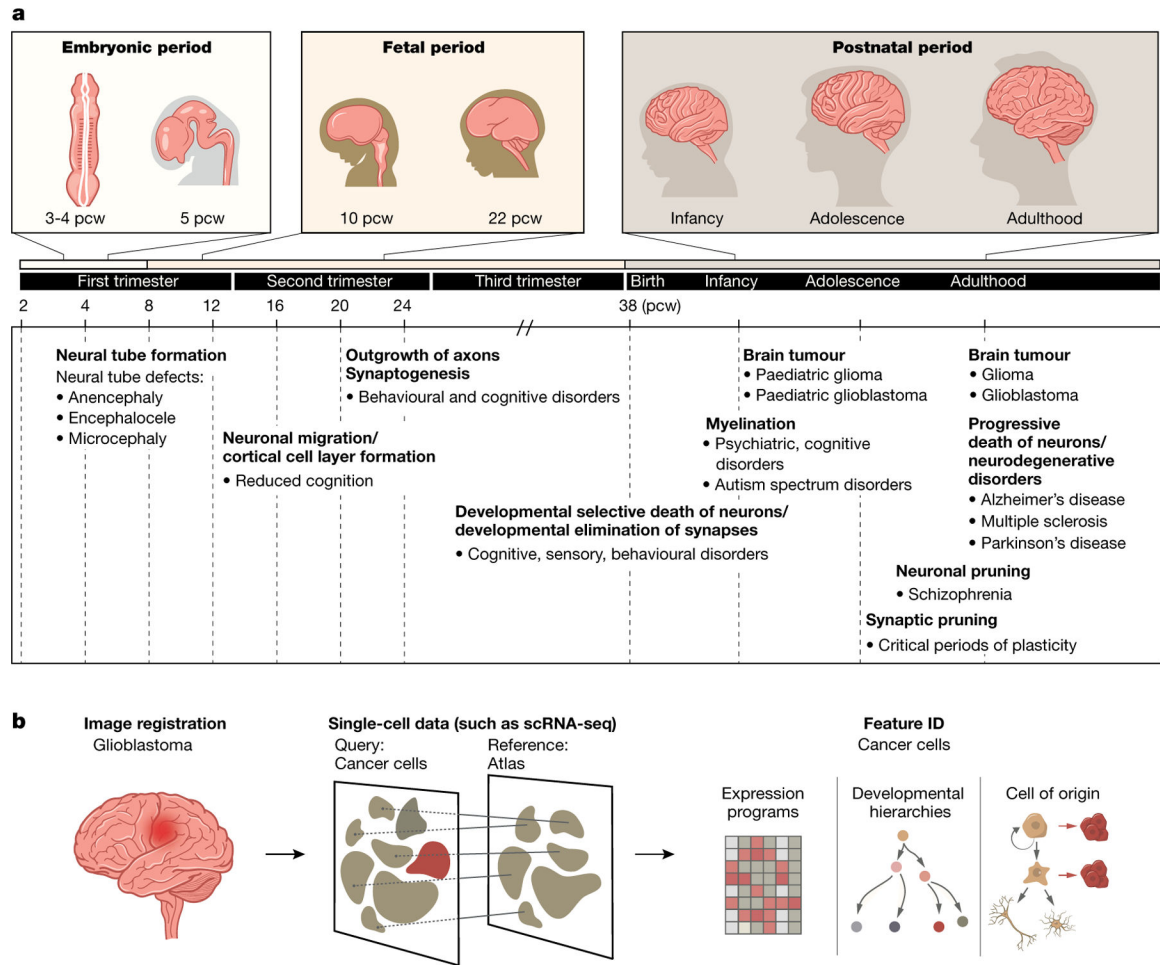
Author Manuscript

Author Manuscript



**Fig. 3 |. Multi-omics profiling and data integration.**

**a**, Organ or anatomical unit profiling of a prenatal embryo derived from multiple germ layers. **b**, Single-cell atlas technologies by relative resolution and genome scale. CODEX, co-detection by indexing; H&E, haematoxylin and eosin staining; IF, immunofluorescence; ISS, in situ sequencing; MERFISH, multiplexed error-robust FISH; MIBI, multiplexed ion beam imaging; seqFISH, sequential FISH; smFISH, single-molecule FISH; STARmap, spatially resolved transcript annotation readout mapping. **c**, Integration of datasets from different technologies (for example, spatial transcriptomics, scRNA-seq and targeted ISS) to profile organs or whole embryos.



**Fig. 4 |. Clinical relevance and applications of the HDCA.**

**a**, Diseases related to brain development, across lifespan. A timeline of brain development across human life, with examples of diseases with onset at different gestational stages and ages. **b**, Disease state compared to developmental atlas, showing how a single-cell atlas with temporal and spatial information can be used as a reference to understand disease states.

Table 1 |

## Publications registered with the HDCA

Organ	Stage	Main highlights	Publications
Brain	First and second trimester	Specific brain regions studied, including prefrontal cortex and neocortex; tracing of developmental trajectories of cells; characterization of mechanisms that underlie neuron generation and circuit formation	Refs. <sup>59,60,63</sup>
Gut	First and second trimester, organoids	Profile of transcriptomes of cycling epithelial precursor cells; evaluation of the effect of mesenchymal cells on LGR5 stem cells; comparison of transcriptomes of ex vivo tissues and in vitro fetal organoids, and of transcriptome profiles from paediatric Crohn's disease epithelium with matched healthy controls	Refs. <sup>58,60,64,124</sup>
Heart	First and second trimester	Identification of unique gene profiles that correspond to distinct anatomical regions in each developmental stage; integration of scRNA-seq and spatial data; generation of a web resource of the human developing heart	Refs. <sup>57,60,62,119</sup>
Liver and fetal haematopoiesis	First and second trimester	Identification of the repertoire of human blood and immune cells, and of differentiation trajectories from haematopoietic stem cells and multipotent progenitors; evaluation of the effect of tissue microenvironment on blood and immune-cell development	Refs. <sup>54,60</sup>
Kidney	First trimester	Identification of both known and unknown transcription factors associated with nephron development; characterization of myeloid and lymphoid populations present during fetal development	Refs. <sup>54,60,61,65</sup>
Placenta	First trimester	Characterization of cellular organization of the decidua and placenta; identification of perivascular and stromal cellular subsets; development of a repository of ligand–receptor complexes, and of a statistical tool to predict the cell-type specificity of cell–cell communication via receptor–ligand interactions	Ref. <sup>56</sup>
Thymus	First and second-trimester, paediatric	Identification of more than 50 cell states, novel subpopulations of thymic fibroblasts and epithelial cells, and a cellular network of the thymic niche for T cell development	Ref. <sup>78</sup>
Skin	First trimester	Identification of physiological erythropoiesis; enrichment of innate immune cells; co-option of developmental programs identified in adult inflammatory skin diseases	Refs. <sup>54,114</sup>
Multi-organ	First and second trimester	Integrated analyses of transcriptomes and chromatin accessibility from several fetal organs, including brain, heart, lung, gut, kidney, adrenal glands, stomach, pancreas, spleen, gonads, muscle, eye and skin	Refs. <sup>60,85,118</sup>

There are 48 researchers from 13 countries currently registered with the HDCA. Developmental datasets are contributed to public repositories, including the HCA Data Coordination Portal. Further information on HCA publications is available at <https://www.humancellatlas.org/publications>.