

RESEARCH

Open Access



Psittacosis caused severe community-acquired pneumonia accompanied by acute hypoxic respiratory failure: a multicenter retrospective cohort study from China

Xiao Tang^{1†}, Na Wang^{2†}, Gang Liu^{3†}, Hai Tan^{4†}, Ai-Min Li^{5†}, Yan-Qiu Gao^{6†}, Meng-Ying Yao^{7†}, Na Wang^{8†}, Hui-Dan Jing⁹, Qing-Guo Di¹⁰, Liang Chen¹¹, Rui Wang¹, Xu-Yan Li¹, Ying Li¹, Xue Yuan¹, Yu Zhao¹, Qi Li^{3*}, Zhao-Hui Tong^{1,12*} and Bing Sun^{1,12*}

Abstract

Introduction Psittacosis can cause severe community-acquired pneumonia (CAP). The clinical manifestations of psittacosis range from subclinical to fulminant psittacosis with multi-organ failure. It is essential to summarize the clinical characteristic of patients with severe psittacosis accompanied by acute hypoxic respiratory failure (AHRF).

Methods This retrospective study included patients with severe psittacosis caused CAP accompanied by AHRF from 19 tertiary hospitals of China. We recorded the clinical data, antimicrobial therapy, respiratory support, complications, and outcomes. *Chlamydia psittaci* was detected on the basis of metagenomic next-generation sequencing performed on bronchoalveolar lavage fluid samples. Patient outcomes were compared between the treatment methods.

Results This study included 45 patients with severe CAP and AHRF caused by psittacosis from April 2018 to May 2021. The highest incidence of these infections was between September and April. There was a history of poultry contact in 64.4% of the patients. The median PaO₂/FiO₂ of the patients was 119.8 (interquartile range, 73.2 to 183.6) mmHg. Four of 45 patients (8.9%) died in the ICU, and the median ICU duration was 12 days (interquartile range, 8 to 21) days. There were no significant differences between patients treated with fluoroquinolone initially and continued after the diagnosis, fluoroquinolone initially followed by tetracycline, and fluoroquinolone combined with tetracycline.

[†]Xiao Tang, Na Wang, Gang Liu, Hai Tan, Ai-Min Li, Yan-Qiu Gao, Meng-Ying Yao and Na Wang contributed equally to this work.

*Correspondence:

Qi Li
liqioliver@sina.com
Zhao-Hui Tong
tongzhh@hotmail.com
Bing Sun
ricusunbing@126.com

Full list of author information is available at the end of the article



© The Author(s) 2023. **Open Access** This article is licensed under a Creative Commons Attribution 4.0 International License, which permits use, sharing, adaptation, distribution and reproduction in any medium or format, as long as you give appropriate credit to the original author(s) and the source, provide a link to the Creative Commons licence, and indicate if changes were made. The images or other third party material in this article are included in the article's Creative Commons licence, unless indicated otherwise in a credit line to the material. If material is not included in the article's Creative Commons licence and your intended use is not permitted by statutory regulation or exceeds the permitted use, you will need to obtain permission directly from the copyright holder. To view a copy of this licence, visit <http://creativecommons.org/licenses/by/4.0/>. The Creative Commons Public Domain Dedication waiver (<http://creativecommons.org/publicdomain/zero/1.0/>) applies to the data made available in this article, unless otherwise stated in a credit line to the data.

Conclusion Psittacosis caused severe CAP seems not rare, especially in the patients with the history of exposure to poultry or birds. Empirical treatment that covers atypical pathogens may benefit such patients, which fluoroquinolones might be considered as an alternative.

Keywords Psittacosis, Severe community-acquired pneumonia, Acute hypoxic respiratory failure, Fluoroquinolone, Intensive care unit

Introduction

Psittacosis is caused by *Chlamydia psittaci*, an intracellular gram-negative bacterium. It is a zoonosis that commonly infects birds. Although not always present, exposure to birds is a major risk factor for infection [1]. Psittacosis was found to be responsible for 1.03% of all community-acquired pneumonias (CAPs) in a meta-analysis [2]. It also accounts for 2.3% of cases of severe CAP [3]. The clinical manifestations range from subclinical or brief to multi-organ failure that was less commonly reported as fulminant psittacosis [4–7]. Before the advent of antimicrobial agents, the mortality of pneumonia caused by *C. psittaci* was 15–20% [8]. However, mortality is rare today.

Psittacosis can be diagnosed on the basis of clinical presentation and tests that detect the human pathogenic *C. psittaci*, such as microimmunofluorescence, indirect fluorescence antibody, culture, or polymerase chain reaction (PCR) [1]. Metagenomic next-generation sequencing (mNGS) was recently developed for disease screening and diagnosis. Many recent reports have described the use of mNGS for the diagnosis of psittacosis in patients with severe CAP [9–11]. However, psittacosis is not routinely tested for in pneumonia diagnostic panels in many countries. Therefore, psittacosis may be underestimated and unrecognized, especially for the critically ill patients. Early diagnosis and treatment is essential for such patients. In this multicenter retrospective study, we evaluated the clinical characteristics and outcomes of patients with severe CAP and acute hypoxic respiratory failure (AHRF) caused by psittacosis admitted to the intensive care units (ICUs).

Materials and methods

Study design and patients

This retrospective study included patients with severe CAP and AHRF caused by psittacosis who were admitted to the 19 tertiary hospitals of China from April 2018 to May 2021. Patients were included if they fulfilled the following criteria: (1) severe CAP [12]; (2) AHRF (arterial partial pressure of oxygen [PaO_2] < 60 mmHg on room air, and arterial partial pressure of carbon dioxide [PaCO_2] < 45 mmHg), or need for > 6 L/min oxygen for respiratory support, and respiratory symptoms < 72 h; (3) *C. psittaci* detected in sputum or bronchoalveolar lavage fluid (BALF) using mNGS; (4) samples included blood,

sputum, and BALF culture with negative results of routine microbiological tests; (5) ICU admission; (6)

the diagnosis of psittacosis pneumonia independently decided by two physicians according to the clinical manifestation, microbiological tests results and lung computed tomography (CT). This study was reviewed and approved by the Ethics Committee of Beijing Chao-Yang Hospital of China (2021-Ke-389). Because this was a retrospective study, consent was waived by the Ethics Committee of the Beijing Chao-Yang Hospital. All methods were carried out in accordance with relevant guidelines and regulations.

Data collection

Demographic and clinical data of the patients were entered into an electronic case report form. The collected data included the demographic characteristics, comorbidities, symptoms, signs, laboratory tests, microbiological findings, and radiologic images of the lung (chest X-ray and computed tomography [CT]). The treatment process during ICU admission such as, antimicrobial therapy, respiratory support, complications, and outcomes were also recorded, in addition to an experienced radiologist in pulmonary imaging experience's interpretation who was blinded to the clinical data reviewed the CT images. CT images were evaluated and defined according to the Fleischner Society glossary of terms for thoracic imaging [13]. The extent of disease at CT was evaluated as CT score [14].

Microbiological tests

Sputum, blood, serum, and BALF samples were collected at admission and during ICU admission. Sputum and BALF samples were tested on bacterial and fungal smear and culture, and real-time PCR for common viruses that cause respiratory disease including influenza virus, adenovirus, rhinovirus, respiratory syncytial virus, cytomegalovirus, etc. Serum samples were used for *M. pneumoniae*, *C. pneumoniae*, and *L. pneumophila* antibodies.

BALF samples were processed using mNGS to screen for pathogenic microorganisms at Vision Medicals Co., Ltd. (Guangzhou, China). The BALF samples were then subjected to nucleic acid extraction (Vision Medicals Cat# VM001, Guangzhou, China). DNA libraries were prepared and sequenced on an Illumina Nextseq sequencer for clinical metagenomic analysis. Sequence

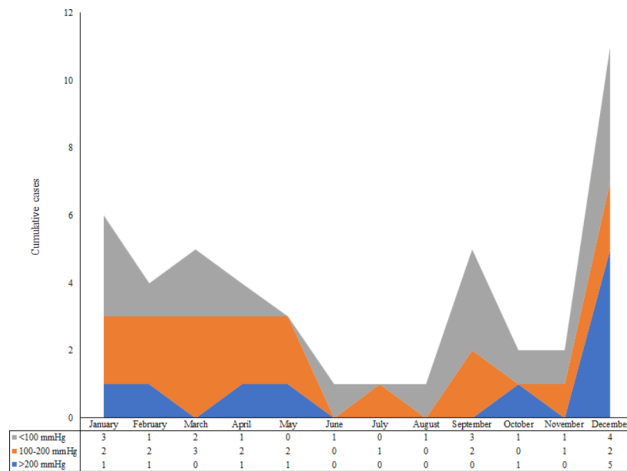


Fig. 1 Cumulative number of cases by PaO₂/FiO₂ in 12 months
FiO₂, fraction of inspired oxygen; PaO₂, arterial partial pressure of oxygen

analysis was performed through Vision Medicals' IDseq™ commercial bioinformatic pipeline. Briefly, reads that mapped to human genome and plasmids were removed. And the remaining reads were taxonomically classified by aligning to Vision Medicals' curated microbial database.

Statistical analysis

SPSS software (version 22.0; IBM Corp., Armonk, NY, USA) was used for the statistical analysis. Continuous variables are presented as mean ± standard deviation (SD) or median (interquartile range, IQR). Chi-squared tests were used to analyze the categorical variables, and Mann–Whitney *U* test was used to analyze the continuous. Univariate analysis was used for the comparison of different treatments. *P*-value < 0.05 was considered to be statistically significant.

Results

From April 2018 to May 2021, 45 patients with severe CAP and AHRF were diagnosed with psittacosis. *C. psittaci* was detected using mNGS on BALF samples. Droplet digital PCR validation was carried out while preparing this study, all the samples showed positive results of *C. psittaci*. It was found psittacosis occurred throughout the year, especially with the high incidence between September and April. The median PaO₂/FiO₂ of the patients was 119.8 (IQR, 73.2 to 183.6) mmHg, and the time distribution did not vary with the PaO₂/FiO₂ (Fig. 1). The mean age was 60 ± 14 years, and 27 (60.0%) patients were males. A history of poultry exposure was found in 64.4% of the patients. The median duration from symptom onset to admission was 7 (IQR, 4 to 10) days (Table 1).

Table 1 Characteristics of patients with psittacosis-induced severe community-acquired pneumonia and acute hypoxic respiratory failure

	Patients (n = 45)
Gender (Male)	27 (60.0)
Age (y)	60 ± 14
Contact history of poultry (n,%)	29 (64.4)
Smoking (n,%)	15 (33.3)
Symptom onset to admission (days)	7 (4, 10)
Symptom onset to ICU (days)	7 (5, 10)
BMI (kg/m²)	23.9 ± 2.8
Underlying diseases (n,%)	
Hypertension	19 (42.2)
Diabetes mellitus	12 (26.7)
Coronary heart disease	8 (17.8)
Chronic heart failure	4 (8.9)
Chronic renal failure	3 (6.7)
Pregnancy	3 (6.7)
Immunosuppression	3 (6.7)
Complications (n,%)	
Hepatic injury	24 (53.3)
Cardiac insufficiency	10 (22.2)
Acute renal failure	8 (17.8)
Pleural effusion	8 (17.8)
Altered consciousness	7 (15.6)
Septic shock	3 (6.7)
Symptom (n,%)	
Fever	44 (97.8)
Highest temperature (°C)	39.4 (39.0, 40.0)
Cough	36 (80.0)
Expectoration	29 (64.4)
Dyspnea	29 (64.4)
Shortness of breath	17 (37.8)
Chills	13 (28.9)
Fatigue	13 (28.9)
Chest tightness	8 (17.8)
Shivering	7 (15.6)
Muscle soreness	7 (15.6)
Nausea	4 (8.9)
Chest pain	2 (4.4)
Vital signs	
Systolic blood pressure (mmHg)	130 ± 25
Diastolic blood pressure (mmHg)	74 ± 12
Heart rate (beats per minute)	100 ± 21
Respiratory rate (times per minute)	24 (20, 30)
APACHE II score	11 (8, 17)
SOFA score	5 (3, 7)

APACHE, Acute Physiology and Chronic Health Evaluation; BMI, body mass index; ICU, intensive care unit; SOFA, sequential organ failure assessment

Clinical characteristics and laboratory examination

Almost all of the patients had high fever, and the highest recorded temperature was 39.4 °C (IQR, 39.0 to 40.0). Patients commonly presented with cough, expectoration,

and dyspnea. The median Acute Physiology and Chronic Health Evaluation (APACHE) II and sequential organ failure assessment (SOFA) scores were 11 (IQR, 8 to 17) and 5 (IQR, 3 to 7), respectively. More than half of the patients (53.3%) had hepatic injury, 10 patients had heart failure, and eight patients had acute renal failure during admission (Table 1).

The median white blood cell count was $8.39 \times 10^9/L$ (IQR, 6.02 to 11.77), which was at the upper limit of the normal range ($4-10 \times 10^9/L$). The median lymphocyte count was $0.50 \times 10^9/L$ (IQR, 0.34 to 0.58), which was significantly lower than the normal range ($0.8 \times 10^9/L$; $p < 0.001$). Glutamic-oxaloacetic transaminase, alanine aminotransferase, and bilirubin were mildly elevated. The median serum procalcitonin (PCT) level was 1.64 ng/mL (IQR, 0.42 to 4.88), which was significantly higher than the normal (0.5 ng/mL) [15]. The other laboratory results are shown in Table 2. Lung CT in most patients showed consolidation and infiltrate appeared in multiple lobes and segmental of bilateral lungs, lesions were more common in the lower lobes (Fig. 2).

Treatment and outcome

Before the diagnosis was confirmed, 30 patients received fluoroquinolone and 2 received azithromycin. None of the patients received tetracycline. The remaining 13 were empirically given β -lactam antibiotics or antivirals included oseltamivir. After the diagnosis was confirmed, 12 patients who initially received fluoroquinolones were shifted to tetracycline, and the other 18 patients continued fluoroquinolones. Among patients who empirically used β -lactam antibiotics or antivirals, eight were given fluoroquinolones combined with tetracycline, two were given tetracycline, and one was given fluoroquinolones alone (Table 2). The median duration from admission to start of targeted therapy was 5 days (IQR, 3 to 10).

Sixteen patients received non-invasive positive pressure ventilation (NIPPV), and four of them were intubated because of failure of NIPPV. Twenty patients (44.4%) were intubated and received invasive mechanical ventilation (IMV), whereas two received veno-venous extracorporeal membrane oxygenation. Four of 45 patients (8.9%) died in the ICU, and the median ICU stay duration was 12 days (IQR, 8 to 21). The median hospitalization duration was 15 days (IQR, 12 to 27) (Table 3). The lung CT of the survival patients before discharge from ICUs most commonly showed consolidation and infiltrates absorbed and residual ground-glass opacities and reticular/fibrotic lesions (Fig. 2). The median CT score at the time of discharged was 4.3 ± 3.1 , which was marked decreased compared with admission of 12.5 ± 5.6 .

Table 2 Laboratory tests during admission

	Patients (n = 45)
Blood routine test	
White blood cell count ($\times 10^9/L$)	8.39 (6.02, 11.77)
Neutrophil count ($\times 10^9/L$)	7.30 (5.26, 10.59)
Lymphocyte count ($\times 10^9/L$)	0.50 (0.34, 0.68)
Monocyte count ($\times 10^9/L$)	0.29 (0.11, 0.38)
Hemoglobin (g/L)	114.5 (97.0, 128.5)
Hematocrit (%)	32.9 (28.9, 37.5)
Platelets ($\times 10^9/L$)	200.5 (129.0, 300.0)
Coagulation function	
Prothrombin time (s)	13.2 (12.0, 14.7)
Activated partial thromboplastin time (s)	31.2 (28.3, 34.4)
Fibrinogen (mg/dL)	687.5 (465.4, 816.0)
D-Dimer (pg/mL)	3.1 (2.2, 6.8)
Biochemical tests	
Albumin (g/L)	27.3 (23.1, 30.6)
Troponin I (ng/mL)	0.02 (0.01, 0.08)
Aspartate aminotransferase (U/L)	64.5 (32.7, 108.0)
Alanine aminotransferase (U/L)	52.6 (37.0, 87.0)
Lactate dehydrogenase (U/L)	485 (399, 644)
Total bilirubin ($\mu\text{mol/L}$)	13.2 (7.1, 19.5)
Direct bilirubin ($\mu\text{mol/L}$)	7.0 (5.4, 11.4)
Serum urea nitrogen (mmol/L)	6.2 (4.9, 11.4)
Creatinine ($\mu\text{mol/L}$)	63.8 (48.0, 82.0)
Glycosylated hemoglobin (%)	6.2 (5.7, 7.0)
B-type brain natriuretic peptide (pg/ml)	178.0 (57.5, 246.5)
Immunity and infection markers	
Erythrocyte sedimentation rate (mm/h)	50 (45, 56)
C reactive protein (mg/dL)	24.5 (16.0, 29.3)
CD3 + lymphocyte ($\nu\mu\text{L}$)	291 (266, 477)
CD4 + CD3 + lymphocyte ($\nu\mu\text{L}$)	195 (172, 368)
CD8 + CD3 + lymphocyte ($\nu\mu\text{L}$)	75 (66, 107)
CD4/CD8	2.8 (2.6, 3.0)
Immunoglobulin G (mg/dL)	854.5 (679.5, 1145.8)
Immunoglobulin A (mg/dL)	220.9 (168.5, 281.5)
Immunoglobulin M (mg/dL)	76.4 (51.8, 90.2)
Complement c3 (mg/dL)	90.8 (69.2, 115.0)
Complement c4 (mg/dL)	22.1 (16.8, 29.2)
Procalcitonin (ng/mL)	1.64 (0.42, 4.88)
Arterial blood gas analysis	
pH	7.47 (7.41, 7.51)
PaCO ₂ (mmHg)	32.6 (26.5, 38.4)
PaO ₂ (mmHg)	65.5 (59.1, 75.0)
Lactate (mmol/L)	1.4 (1.2, 2.0)
PaO ₂ /FiO ₂ (mmHg)	119.8 (73.2, 183.6)

FiO₂, fraction of inspired oxygen; PaCO₂, arterial carbon dioxide partial pressure; PaO₂, arterial partial pressure of oxygen

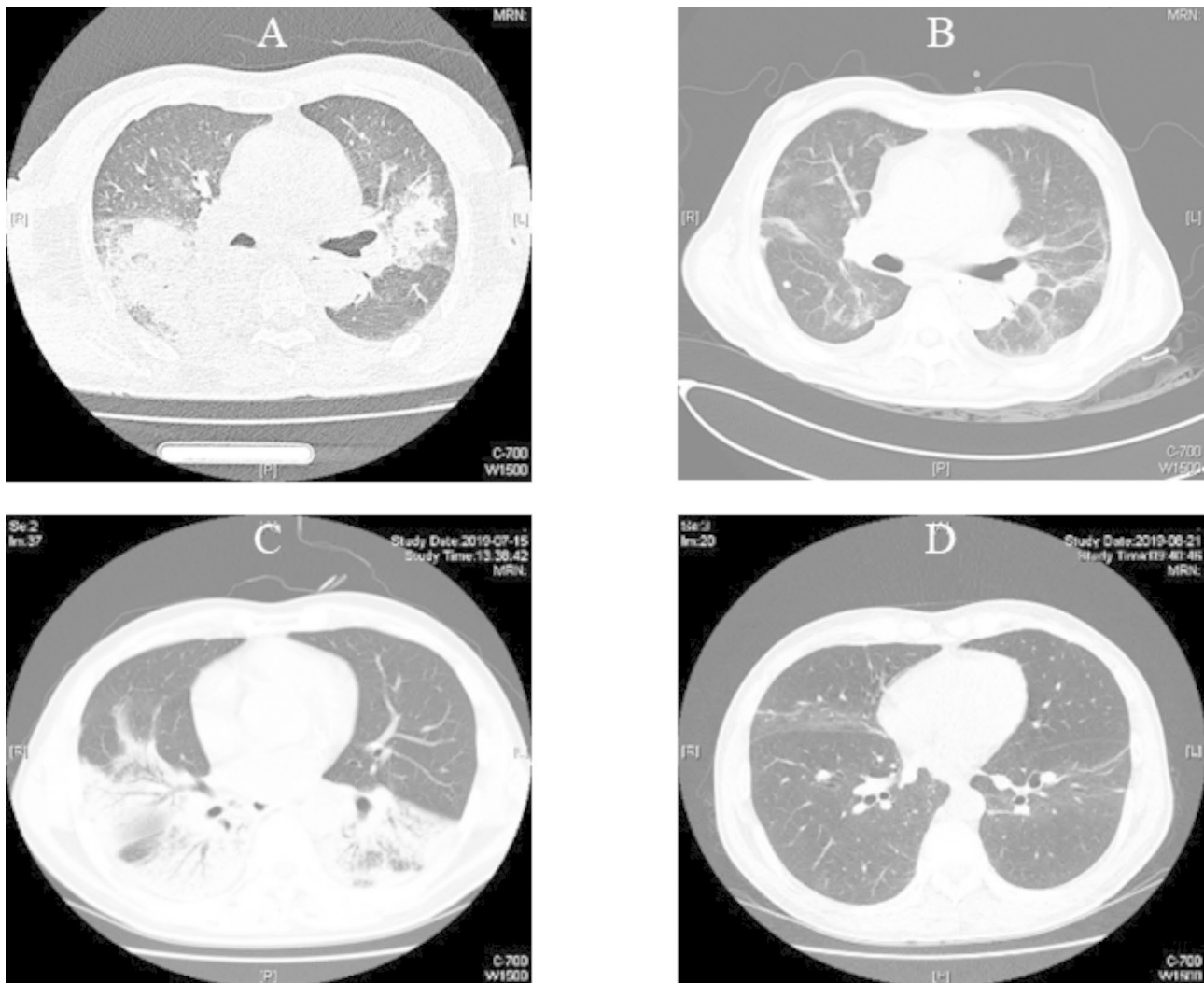


Fig. 2 Lung computed tomography findings of the patients with psittacosis caused severe community acquired pneumonia

Figure-2A was the lung CT of an 80 years old male of psittacosis pneumonia while admission, which showed consolidation and infiltrate in bilateral lungs. Figure-2B showed reticular lesions and ground-glass opacities residually in bilateral lungs before discharged from ICU. Figure-2C showed a 54 years old female, consolidation and infiltrate in lower lobes of bilateral lungs. Figure-2D showed few reticular in bilateral lungs before discharged

Comparison of treatment methods

Because only a few patients received azithromycin and tetracycline alone, we compared the clinical characteristics and outcomes between patients who received fluoroquinolone initially and shift to tetracycline after diagnosis, fluoroquinolone initially and continued after diagnosis, and fluoroquinolone combined with tetracycline.

There were no significant differences between the three groups in terms of the demographic data, duration from symptom onset to admission, and disease severity (Table 4). The white blood cell and neutrophil counts were significantly higher among patients who received fluoroquinolone initially and after diagnosis compared to the other patients ($p=0.015$). Among patients who received fluoroquinolone initially and after diagnosis, 11

received IMV and 6 underwent continuous renal replacement therapy, which was more common compared to the other two groups. There was no difference in in-hospital mortality and hospitalization duration between the three groups.

Discussion

To the best of our knowledge, this was the largest cohort study of psittacosis accompanied by AHRF from mainland China. In this study, we found psittacosis may present with varying AHRF severity, and the common seasons of psittacosis were autumn and winter. Fluoroquinolones may have efficacy equivalent to tetracycline. Considering the limited diagnostic ability, standard empirical treatment should follow CAP guidelines [12, 16], which recommend that treatment should cover atypical pathogens

Table 3 Treatment and outcome of patients with psittacosis

	Patients (n = 45)
Initial antibiotic treatment (n,%)	
β-lactam antibiotics or antivirals	13 (28.9)
Fluoroquinolones	30 (66.7)
Azithromycin	2 (4.4)
Targeted therapy (n,%)	
None	2 (4.4)
Fluoroquinolone initially, changed to tetracycline	12 (26.7)
Fluoroquinolone initially, continued after diagnosis	18 (40.0)
Azithromycin initially, continued after diagnosis	1 (2.2)
Azithromycin initially, changed to tetracycline	1 (2.2)
Fluoroquinolone combined with tetracycline after diagnosis	8 (17.8)
Fluoroquinolone after diagnosis	1 (2.2)
Tetracycline after diagnosis	2 (4.4)
Corticosteroid	11 (24.4)
Cumulative dose (mg)	530 (200, 760)
Time from admission (d)	4 (2, 7)
Duration (day)	6 (5, 18)
Respiratory support	
HFNC	26 (57.8)
Highest FiO ₂	0.6 (0.5, 0.7)
Highest flow rate (L/min)	50 (40, 60)
NIPPV	16 (35.6)
Highest FiO ₂	0.6 (0.5, 0.8)
Highest PEEP (cmH ₂ O)	6 (5, 8)
Failure (n,%)	4 (25.0)
IMV	20 (44.4)
Highest FiO ₂	1.0 (0.8, 1.0)
Highest PEEP (cmH ₂ O)	12 (10, 14)
Highest Pi (cmH ₂ O)	15 (13, 18)
Duration (hr)	168 (131, 252)
Prone position (n,%)	11 (24.4)
ECMO (n,%)	2 (4.4)
CRRT (n,%)	6 (13.3)
ICU duration (day)	12 (8, 21)
Hospitalization duration (day)	15 (12, 27)
Mortality rate (n,%)	4 (8.9%)

CRRT, continuous renal replacement therapy; ECMO, extracorporeal membrane oxygenation; FiO₂, fraction of inspired oxygen; HFNC, high-flow nasal canula oxygen therapy; ICU, intensive care unit; IMV, invasive mechanical ventilation; NIPPV, non-invasive positive pressure ventilation; PEEP, positive end expiratory pressure; Pi, inspiratory pressure

to improve the prognosis of patients with psittacosis and AHRF.

C. psittaci was reported to account for 2.3% of cases of severe CAP [3]. The mortality rate of patients with psittacosis admitted to the ICU was as high as 15% [17]. It is essential to recognize psittacosis based on the symptoms

in patients with CAP and AHRF. Patients should receive early targeted therapy for a better prognosis. *C. psittaci* infection presents with an abrupt onset of fever, chills, headache, malaise, and myalgias. A non-productive cough is usually present and can be accompanied by breathing difficulty or chest tightness. Radiographic findings may include lobar or interstitial infiltrates [1]. About 70% of psittacosis patients had a known past exposure to poultry [18]. The incubation period for the illness is 5–14 days [19]. Age older than 65 years, male sex [20], and abnormal CK and BNP levels [21] were the risk factors for severe cases.

Similar to previous reports, there were atypical clinical manifestations of psittacosis in our study, which makes differentiation of psittacosis from other infections difficult. Although psittacosis can occur at any time of the year, most patients presented in autumn and winter. Therefore, the outbreak of psittacosis coincided with that of influenza. However, most psittacosis patients had a history of poultry exposure, and it is important to differentiate it from other infections that are transmitted from poultry, including H7N9, H5N1, H5N6, etc. The difficulty in differentiation between these pathogens partly explains why 30% of the patients in this study received antivirals initially. In addition, we found the white blood cell count was in the normal range, the lymphocyte count was slightly reduced, and PCT was slightly elevated (almost lower than 2 ng/mL). Most patients with psittacosis had impaired liver function. Lung CT showed consolidation and infiltrates appeared in multiple lobes and segments of bilateral lungs. These presentations may help to differentiate psittacosis from other similar infections that present with severe CAP.

Rapid diagnosis is essential for a good prognosis of CAP patients. Psittacosis can be diagnosed on the basis of a suggestive clinical presentation and detection of *C. psittaci* in human specimens. The current confirmatory laboratory tests for psittacosis include PCR and serologic tests (complement binding reactions, enzyme-linked immunosorbent assay, immunofluorescence tests, and immuno-peroxidase tests) [22]. In recent years, PCR has become the most commonly used diagnostic method for psittacosis [2, 23]. However, to ensure biosafety, this test can only be performed in special laboratories [24].

mNGS can theoretically detect all pathogens in a clinical sample and is especially suitable for rare, novel, and atypical etiologies of complicated infectious diseases [25]. The use of NGS for the diagnosis of a suspected outbreak of psittacosis-induced severe CAP and ARDS was first reported in 2014 [9]. With the recent increase in the use of mNGS, psittacosis is being increasingly and rapidly screened and diagnosed. It seemed superior to the traditional methods [10, 11]. In particular, mNGS has great potential for use for rapid diagnosis during public

Table 4 Comparison between treatment methods

	Fluoroquinolone initially, continued after diagnosis (n = 18)	Fluoroquinolone initially, changed to tetracycline (n = 12)	Fluoroquinolone combined with tetracycline after diagnosis (n = 8)	P-value
Age (y)	56 (47, 64)	62 (52, 68)	61 (54, 73)	0.757
Gender (Male)	18 (55.6)	10 (83.3)	2 (25.0)	0.034
Symptom onset to admission (days)	9 (5, 10)	7 (6, 7)	4 (4, 7)	0.140
Symptom onset to ICU (day)	9 (5, 11)	7 (6, 9)	10 (5, 10)	0.556
APACHE II score	11 (8, 20)	7 (6, 13)	14 (10, 15)	0.901
SOFA score	5 (2, 10)	3 (2, 4)	6 (4, 6)	0.416
White blood cell count ($\times 10^9/L$)	10.32 (7.36, 11.80)	7.58 (5.00, 11.98)	6.38 (5.70, 7.50)	0.015
Neutrophil count ($\times 10^9/L$)	9.47 (6.89, 11.04)	6.77 (3.94, 10.03)	5.73 (4.94, 6.82)	0.015
Lymphocyte count ($\times 10^9/L$)	0.52 (0.36, 0.67)	0.62 (0.42, 0.86)	0.46 (0.33, 0.54)	0.659
Aspartate aminotransferase (U/L)	80.0 (63.0, 123.0)	96.0 (58.0, 198.8)	52.1 (40.0, 74.0)	0.024
Alanine aminotransferase (U/L)	43.5 (36.0, 69.0)	75.0 (46.4, 121.0)	70.0 (59.0, 87.0)	0.082
Serum urea nitrogen (mmol/L)	6.58 (4.89, 7.43)	5.10 (3.83, 9.40)	6.49 (2.80, 7.51)	0.329
Creatinine ($\mu\text{mol/L}$)	68.4 (44.5, 108.1)	71.5 (52.6, 80.0)	53.3 (33.8, 73.6)	1.000
PaO ₂ /FiO ₂ (mmHg)	120.8 (67.8, 200.0)	100.0 (92.5, 119.6)	133.6 (80.0, 148.3)	0.329
Duration from admission to targeted therapy	-	-	6 (2, 10)	-
Respiratory support				
HFNC	13 (72.2)	6 (50.0)	4 (50.0)	0.376
NIPPV	7 (38.9)	3 (25.0)	4 (50.0)	0.509
NIPPV failure	3 (16.7)	1 (8.3)	0 (0)	0.423
IMV	11 (61.1)	5 (41.7)	1 (12.5)	0.069
CRRT	4 (22.2)	0 (0)	0 (0)	0.083
Corticosteroids	6 (31.6)	1 (7.7)	2 (28.6)	0.269
Mortality rate	1 (5.6)	2 (16.7)	0 (0)	0.352
ICU duration (d)	14 (12, 22)	11 (9, 19)	7 (6, 11)	0.117
Hospitalization duration (d)	15 (13, 27)	14 (12, 26)	17 (14, 24)	0.649

APACHE, Acute Physiology and Chronic Health Evaluation; CRRT, continuous renal replacement therapy; FiO₂, fraction of inspired oxygen; HFNC, high-flow nasal canula oxygen therapy; ICU, intensive care unit; IMV, invasive mechanical ventilation; NIPPV, non-invasive positive pressure ventilation; PaO₂, arterial partial pressure of oxygen, SOFA, sequential organ failure assessment.

health crisis [26, 27]. Rapid diagnosis is essential for critically ill patients with severe pneumonia and AHRE. In our previous work, we found that mNGS improved the sensitivity of pathogen detection in BALF and provides clinical guidance for management. Additionally, dynamic changes in reads could indirectly reflect therapeutic effectiveness [28]. Due to its sensitivity, speed, and cost-effectiveness, mNGS has the potential for routine use in diagnostics, and may even partly replace the traditional paradigm of serial tests [25].

In this study, psittacosis patients with AHRE who were admitted to the ICU had a better outcome, with a mortality rate of 8.9%, which was lower than previous reports [17]. In addition to appropriate organ support, standard empirical treatment for CAP covered atypical pathogens, including *C. psittaci*, which might play an important role. Tetracyclines are the drugs of choice for *C. psittaci* infection in humans, and are prescribed for 10–14 days [1, 12, 16]. Most *C. psittaci* infections respond to antibiotics within 1–2 days. In this study, 30 patients received fluoroquinolones as the initial empirical antibiotics. After diagnosis, only 12 patients were shifted to tetracycline,

and the other patients continued using fluoroquinolones. Because few patients had received azithromycin or tetracycline individually, we only compared patients who received fluoroquinolone individually with those who received fluoroquinolone combined with tetracycline. Although the proportion of patients who required IMV and continuous renal replacement therapy was slightly greater among the fluoroquinolone group compared to the other groups, the mortality rate and hospitalization stay duration were not significantly different between the groups. Although tetracycline is the preferred antibiotic for chlamydial infections in non-pregnant adults, some studies have reported that fluoroquinolones are active against chlamydia in vitro or in veterinary medicine [29, 30]. The results of this study provide more evidence for the use of fluoroquinolone for patients with psittacosis, especially those with severe CAP and AHRE.

There were still some limitations to this study. First, this was a retrospective study with a small sample size, and the patients were exclusively from mainland China. Therefore, the results may not be generalizable to all populations. However, considering the low incidence rate

of psittacosis, the results of this study have certain clinical value. Second, we could not include all severe CAP patients treated at the study centers. Therefore, the actual incidence of psittacosis among severe CAP patients could not be calculated. Third, microbiological diagnosis of psittacosis was based on mNGS, which is not included in the diagnostic criteria for psittacosis. However, droplet digital PCR validation (DDPCR) was carried out in this study, which could strengthen the diagnose accuracy. Fourth, because of insufficient data on respiratory support, we could not analyze respiratory mechanics parameters or respiratory support parameters in patients with AHRE. Lastly, only four patients died in this study. Therefore, factors related to poor prognosis could not be determined.

Conclusion

Psittacosis caused severe CAP was not rare, especially in the patients with the history of exposure to poultry or birds. It may present with varying AHRE severity. Novel microbiological technologies may improve the diagnostic potential. Empirical treatment that covers atypical pathogens may benefit such patients, which fluoroquinolones might be considered as an alternative. The results need to be verified in large, well-designed, prospective randomized controlled studies to further evaluate the treatment and outcomes of psittacosis.

List of abbreviations

AHRE	Acute hypoxic respiratory failure
APACHE	Acute Physiology and Chronic Health Evaluation
CAP	Community-acquired pneumonia
CT	Computed tomography
DDPCR	Droplet digital PCR validation
ICU	Intensive care units
IMV	Invasive mechanical ventilation
IQR	Interquartile range
mNGS	Metagenomic next-generation sequencing
NIPPV	Non-invasive positive pressure ventilation
PaO ₂	Partial oxygen pressure
PCR	Polymerase chain reaction
PCT	Procalcitonin
SD	Standard deviation
SOFA	Sequential organ failure assessment

Acknowledgements

Not applicable.

Authors' contributions

Z.H.T., Q.L., and B.S. conceived the idea, designed, and supervised the study. Z.H.Y., Q.L., and B.S. had full access to all of the data and took responsibility for the integrity of the data. X.T. and N.W. drafted the manuscript. N.W., G.L., H.T., A.M.L., Y.Q.G., M.Y.Y., N.W., H.D.J., Q.G.D., L.C., X.Y., and Y.Z. collected data. R.W., X.Y.L., and Y.L. analyzed data and performed statistical analysis. All authors reviewed and approved the final version of the manuscript. CONSORTIUM NAME Severe community-acquired pneumonia and acute respiratory failure study group 1 Xiao Tang, Rui Wang, Xu-Yan Li, Ying Li, Xue Yuan, Yu Zhao, Zhao-Hui Tong, Bing Sun. Department of Respiratory and Critical Care Medicine, Beijing Chao-Yang Hospital, Capital Medical University, Beijing Institute of Respiratory Medicine, Beijing, China; 2 Na Wang. Department of Pulmonary and critical care medicine, Beijing Luhe Hospital, Capital Medical University, Beijing, China; 3 Gang Liu, Qi Li. Department Pulmonary and critical care medical center, Xinqiao hospital, Army Medical University, the Chinese

People's Liberation Army Respiratory Disease Institute, Chongqing, China; 4 Hai Tan. Department of Respiratory and Critical Care Medicine, General Hospital of Ningxia Medical University, Xi Ning, Ningxia Hui Autonomous Region, China; 5 Ai-Min Li. Respiratory and Critical Care Medicine, First Hospital of Shanxi Medical University, Taiyuan, Shanxi Province, China; 6 Yan-Qiu Gao. Respiratory Intensive Care Unit, Zhengzhou Central Hospital Affiliated to Zhengzhou University, Zhengzhou, Henan Province, China; 7 Meng-Ying Yao. Department of Respiratory Intensive Care Unit The First Affiliated Hospital of Zhengzhou University, Zhengzhou, Henan Province, China; 8 Na Wang. Department of Pulmonary, The first hospital of Fangshan district, Beijing, China; 9 Hui-Dan Jing. Department of Intensive Care Unit, Daping Hospital, Army Medical University, Chongqing, China; 10 Qing-Guo Di. Department of Pulmonary and Critical Care Medicine, Cangzhou Central Hospital, Cangzhou, Hebei Province, China; 11 Liang Chen. Department of Respiratory and Critical Care Medicine, Beijing Jingmei Group General Hospital, Beijing, China. 12 Ru-Fang Li, Department of Pulmonary and Critical Care Medicine, The First People's Hospital of Yunnan Province, Kunming, Yunan Province, China; 13 Ling Zhang, Department of Pulmonary and Critical Care Medicine, Chengdu Second People's Hospital, Chengdu, Sichuan Province, China; 14 Xiu-Zhen Jia, Respiratory intensive care unit, Inner Mongolia People's Hospital, Hohhot, Inner Mongolia Autonomous Region, China; 15 Yong-Hui Zhang, Department of critical care medicine, The First Affiliated Hospital of Army Medical University, Chongqing, China; 16 Peng Chen, Department of Emergency, Enze Hospital, Taizhou Enze Medical Center (Group), Taizhou, Zhejiang Province, China; 17 Ying Tian, Medical intensive care unit, First hospital of Qinhuangdao, Qinhuangdao, Hebei Province, China.

Funding

This work was supported by the Clinical medicine development project of Beijing Hospital Authority (XMLX202105), clinical diagnosis and treatment technology and translational research project of Beijing (Z201100005520030), Excellent Talents Development Project of Public Health Technology (XUEKEDAITOUREN-01-19) and Reform and Development Program of the Beijing Institute of Respiratory Medicine (Ggyfz202332).

Data availability

Data is deposited in China National Microbiology Data Center (NMDC) with accession numbers NMDC10018302 (<https://nmcd.cn/resource/genomics/project/detail/NMDC10018302>).

Declarations

Ethics approval and consent to participate

This study was approved by the Ethics Committee of Beijing Chao-Yang Hospital of China (2021-Ke-389). Because this was a retrospective study, consent was waived by the Ethics Committee of the Beijing Chao-Yang Hospital.

Consent for publication

Not applicable.

Competing interest

The authors declare that they have no competing interests

Author details

¹Department of Respiratory and Critical Care Medicine, Beijing Institute of Respiratory Medicine and Beijing Chao-Yang Hospital, Capital Medical University, Beijing, China

²Department of Pulmonary and critical care medicine, Beijing Luhe Hospital, Capital Medical University, Beijing, China

³Department Pulmonary and critical care medical center, Xinqiao hospital, Army Medical University, the Chinese People's Liberation Army Respiratory Disease Institute, Chongqing, China

⁴Department of Respiratory and Critical Care Medicine, General Hospital of Ningxia Medical University, Ningxia Hui Autonomous Region, Xi Ning, China

⁵Respiratory and Critical Care Medicine, First Hospital of Shanxi Medical University, Taiyuan, Shanxi Province, China

⁶Respiratory Intensive Care Unit, Zhengzhou Central Hospital Affiliated to Zhengzhou University, Zhengzhou, Henan Province, China

- ⁷Department of Respiratory Intensive Care Unit, The First Affiliated Hospital of Zhengzhou University, Zhengzhou, Henan Province, China
- ⁸Department of Pulmonary, The first hospital of Fangshan district, Beijing, China
- ⁹Department of Intensive Care Unit, Daping Hospital, Army Medical University, Chongqing, China
- ¹⁰Department of Pulmonary and Critical Care Medicine, Cangzhou Central Hospital, Cangzhou, Hebei Province, China
- ¹¹Department of Respiratory and Critical Care Medicine, Beijing Jingmei Group General Hospital, Beijing, China
- ¹²Department of Respiratory and Critical Care Medicine, Beijing Institute of Respiratory Medicine and Beijing Chao-Yang Hospital, Capital Medical University, Beijing, China

Received: 14 December 2022 / Accepted: 26 April 2023

Published online: 14 August 2023

References

- Balsamo G, Maxted AM, Midla JW, Murphy JM, Wohrle R, Edling TM, et al. Compendium of Measures to control Chlamydia psittaci infection among humans (psittacosis) and Pet Birds (Avian Chlamydiosis), 2017. *J Avian Med Surg.* 2017;31(3):262–82.
- Hogerwerf L, B DEG, Baan B, WVDH. Chlamydia psittaci (psittacosis) as a cause of community-acquired pneumonia: a systematic review and meta-analysis. *Epidemiol Infect.* 2017;145(15):3096–105.
- Ishiguro T, Takayanagi N, Yamaguchi S, Yamakawa H, Nakamoto K, Takaku Y, et al. Etiology and factors contributing to the severity and mortality of community-acquired pneumonia. *Intern Med.* 2013;52(3):317–24.
- Meijer R, van Biezen P, Prins G, Boiten HJ. Multi-organ failure with necrotic skin lesions due to infection with Chlamydia psittaci. *Int J Infect Dis.* 2021;106:262–4.
- Fraeyman A, Boel A, Van Vaerenbergh K, De Beenhouwer H. Atypical pneumonia due to Chlamydia psittaci: 3 case reports and review of literature. *Acta Clin Belg.* 2010;65(3):192–6.
- Arenas-Valls N, Chacon S, Perez A, Del Pozo R. Atypical Chlamydia Psittaci Pneumonia. Four Related Cases. *Arch Bronconeumol.* 2017;53(5):277–9.
- Raeven VM, Spoorenberg SM, Boersma WG, van de Garde EM, Cannegieter SC, Voorn GP, et al. Atypical aetiology in patients hospitalised with community-acquired pneumonia is associated with age, gender and season; a data-analysis on four dutch cohorts. *BMC Infect Dis.* 2016;16:299.
- Dunnahoo GL, Hampton BC. Psittacosis: occurrence in the United States and Report of 97% mortality in a shipment of Psittacine Birds while under Quarantine. *Public Health Reports.* 1945;60(13):354.
- Fischer N, Rohde H, Indenbirken D, Gunther T, Reumann K, Lutgehetmann M, et al. Rapid metagenomic diagnostics for suspected outbreak of severe pneumonia. *Emerg Infect Dis.* 2014;20(6):1072–5.
- Chen X, Cao K, Wei Y, Qian Y, Liang J, Dong D, et al. Metagenomic next-generation sequencing in the diagnosis of severe pneumonias caused by Chlamydia psittaci. *Infection.* 2020;48(4):535–42.
- Gu L, Liu W, Ru M, Lin J, Yu G, Ye J, et al. The application of metagenomic next-generation sequencing in diagnosing Chlamydia psittaci pneumonia: a report of five cases. *BMC Pulm Med.* 2020;20(1):65.
- Cao B, Huang Y, She DY, Cheng QJ, Fan H, Tian XL, et al. Diagnosis and treatment of community-acquired pneumonia in adults: 2016 clinical practice guidelines by the chinese thoracic society, Chinese Medical Association. *Clin Respir J.* 2018;12(4):1320–60.
- Hansell DM, Bankier AA, MacMahon H, McLoud TC, Muller NL, Remy J. Fleischner Society: glossary of terms for thoracic imaging. *Radiology.* 2008;246(3):697–722.
- Ooi GC, Khong PL, Muller NL, Yiu WC, Zhou LJ, Ho JC, et al. Severe acute respiratory syndrome: temporal lung changes at thin-section CT in 30 patients. *Radiology.* 2004;230(3):836–44.
- Christ-Crain M, Jaccard-Stolz D, Bingisser R, Gencay MM, Huber PR, Tamm M, et al. Effect of procalcitonin-guided treatment on antibiotic use and outcome in lower respiratory tract infections: cluster-randomised, single-blinded intervention trial. *Lancet.* 2004;363(9409):600–7.
- Metlay JP, Waterer GW, Long AC, Anzueto A, Brozek J, Crothers K, et al. Diagnosis and treatment of adults with community-acquired Pneumonia. An Official Clinical Practice Guideline of the American thoracic society and infectious Diseases Society of America. *Am J Respir Crit Care Med.* 2019;200(7):e45–e67.
- Gacouin A, Revest M, Lethuille J, Fillatre P, Jouneau S, Piau C, et al. Distinctive features between community-acquired pneumonia (CAP) due to Chlamydia psittaci and CAP due to Legionella pneumophila admitted to the intensive care unit (ICU). *Eur J Clin Microbiol Infect Dis.* 2012;31(10):2713–8.
- Cilloniz C, Torres A, Niederman M, van der Eerden M, Chalmers J, Welte T, et al. Community-acquired pneumonia related to intracellular pathogens. *Intensive Care Med.* 2016;42(9):1374–86.
- Yung AP, Grayson ML. Psittacosis—a review of 135 cases. *Med J Aust.* 1988;148(5):228–33.
- Ni Y, Zhong H, Gu Y, Liu L, Zhang Q, Wang L, et al. Clinical features, treatment, and Outcome of Psittacosis Pneumonia: a Multicenter Study. *Open Forum Infect Dis.* 2023;10(2):ofac518.
- Su S, Su X, Zhou L, Lin P, Chen J, Chen C, et al. Severe Chlamydia psittaci pneumonia: clinical characteristics and risk factors. *Ann Palliat Med.* 2021;10(7):8051–60.
- Nieuwenhuizen AA, Dijkstra F, Notermans DW, van der Hoek W. Laboratory methods for case finding in human psittacosis outbreaks: a systematic review. *BMC Infect Dis.* 2018;18(1):442.
- Spoorenberg SM, Bos WJ, van Hanne E, Dijkstra F, Heddemer ER, van Velzen-Blad H, et al. Chlamydia psittaci: a relevant cause of community-acquired pneumonia in two dutch hospitals. *Neth J Med.* 2016;74(2):75–81.
- Dumke R, Schnee C, Pletz MW, Rupp J, Jacobs E, Sachse K, et al. Mycoplasma pneumoniae and Chlamydia spp. infection in community-acquired pneumonia, Germany, 2011–2012. *Emerg Infect Dis.* 2015;21(3):426–34.
- Goldberg B, Sichtig H, Geyer C, Ledebner N, Weinstock GM. Making the Leap from Research Laboratory to Clinic: Challenges and Opportunities for Next-Generation sequencing in Infectious Disease Diagnostics. *MBio.* 2015;6(6):e01888–15.
- Chen L, Liu W, Zhang Q, Xu K, Ye G, Wu W, et al. RNA based mNGS approach identifies a novel human coronavirus from two individual pneumonia cases in 2019 Wuhan outbreak. *Emerg Microbes Infect.* 2020;9(1):313–9.
- Li T, Mbala-Kingebeni P, Naccache SN, Theze J, Bouquet J, Federman S, et al. Metagenomic next-generation sequencing of the 2014 Ebola Virus Disease Outbreak in the Democratic Republic of the Congo. *J Clin Microbiol.* 2019;57(9).
- Li Y, Sun B, Tang X, Liu YL, He HY, Li XY, et al. Application of metagenomic next-generation sequencing for bronchoalveolar lavage diagnostics in critically ill patients. *Eur J Clin Microbiol Infect Dis.* 2020;39(2):369–74.
- Bommana S, Polkinghorne A. Mini review: Antimicrobial Control of Chlamydial Infections in animals: current Practices and Issues. *Front Microbiol.* 2019;10:113.
- Donati M, Rodriguez Fermepein M, Olmo A, D'Apote L, Cevenini R. Comparative in-vitro activity of moxifloxacin, minocycline and azithromycin against Chlamydia spp. *J Antimicrob Chemother.* 1999;43(6):825–7.
- Cunha BA. The chlamydial pneumonias. *Drugs Today (Barc).* 1998;34(12):1005–12.

Publisher's Note

Springer Nature remains neutral with regard to jurisdictional claims in published maps and institutional affiliations.