











OPEN LETTER

**REVISED** **ECORISK2050: An Innovative Training Network for predicting the effects of global change on the emission, fate, effects, and risks of chemicals in aquatic ecosystems [version 2; peer review: 2 approved]**

Samuel A. Welch <sup>1</sup>, Taylor Lane<sup>2</sup>, Alizée O.S Desrousseaux<sup>2</sup>, Joanke van Dijk<sup>3</sup>, Annika Mangold-Döring<sup>4</sup>, Rudrani Gajraj<sup>5</sup>, John D. Hader <sup>6</sup>, Markus Hermann <sup>4</sup>, Anju Parvathi Ayillyath Kuttayeri<sup>7</sup>, Sophie Mentzel<sup>1</sup>, Poornima Nagesh<sup>3</sup>, Francesco Polazzo <sup>3</sup>, Sabrina K. Roth <sup>6</sup>, Alistair B.A. Boxall<sup>2</sup>, Benny Chefetz<sup>7</sup>, Stefan C. Dekker<sup>3</sup>, Josef Eitzinger <sup>5</sup>, Merete Grung <sup>1</sup>, Matthew MacLeod<sup>6</sup>, S. Jannicke Moe <sup>1</sup>, Andreu Rico<sup>8</sup>, Anna Sobek<sup>6</sup>, Annemarie P. van Wezel<sup>3</sup>, Paul van den Brink<sup>4</sup>

<sup>1</sup>Norwegian Institute for Water Research, Oslo, 0579, Norway

<sup>2</sup>Environment Department, University of York, Heslington, York, UK

<sup>3</sup>Copernicus Institute of Sustainable Development, Utrecht University, Utrecht, The Netherlands

<sup>4</sup>Aquatic Ecology and Water Quality Management Group, Wageningen University, Wageningen, 6700 AA, The Netherlands

<sup>5</sup>Institute of Meteorology and Climatology, Department of Water, Atmosphere and Environment (WAU), University of Natural Resources and Life sciences (BOKU), Vienna, Austria

<sup>6</sup>Department of Environmental Science, Stockholm University, Stockholm, 106 91, Sweden

<sup>7</sup>Department of Soil and Water Sciences, The Hebrew University of Jerusalem, Rehovot, 7610001, Israel

<sup>8</sup>IMDEA Water Institute, Science and Technology Campus of the University of Alcalá, Alcalá de Henares, Madrid, 28805, Spain

**v2** First published: 20 Dec 2021, 1:154  
<https://doi.org/10.12688/openreseurope.14283.1>

Latest published: 16 May 2022, 1:154  
<https://doi.org/10.12688/openreseurope.14283.2>




### Abstract


By 2050, the global population is predicted to reach nine billion, with almost three quarters living in cities. The road to 2050 will be marked by changes in land use, climate, and the management of water and food across the world. These global changes (GCs) will likely affect the emissions, transport, and fate of chemicals, and thus the exposure of the natural environment to chemicals.

ECORISK2050 is a Marie Skłodowska-Curie Innovative Training Network that brings together an interdisciplinary consortium of academic, industry and governmental partners to deliver a new generation of scientists, with the skills required to study and manage the effects of GCs on chemical risks to the aquatic environment. The research and training goals are to: (1) assess how inputs and

### Open Peer Review

Approval Status  

	1	2
<b>version 2</b> (revision) 16 May 2022		 <a href="#">view</a>
<b>version 1</b> 20 Dec 2021	 <a href="#">view</a>	 <a href="#">view</a>

1. **Luděk Bláha** , Masaryk University, Brno, Czech Republic

behaviour of chemicals from agriculture and urban environments are affected by different environmental conditions, and how different GC scenarios will drive changes in chemical risks to human and ecosystem health; (2) identify short-to-medium term adaptation and mitigation strategies, to abate unacceptable increases to risks, and (3) develop tools for use by industry and policymakers for the assessment and management of the impacts of GC-related drivers on chemical risks.

This project will deliver the next generation of scientists, consultants, and industry and governmental decision-makers who have the knowledge and skillsets required to address the changing pressures associated with chemicals emitted by agricultural and urban activities, on aquatic systems on the path to 2050 and beyond.

### Keywords

climate change, ecotoxicology, innovative training network, emerging chemicals, agricultural pollution, PCPPs, global change

2. **Hans-Christian Bruun Hansen**, University of Copenhagen, Frederiksberg, Denmark

Any reports and responses or comments on the article can be found at the end of the article.



This article is included in the [Earth and Environmental Sciences](#) gateway.



This article is included in the [Marie-Sklodowska-Curie Actions \(MSCA\)](#) gateway.



This article is included in the [Nanomaterials](#) collection.



This article is included in the [Combating Global Pollution](#) collection.

**Corresponding author:** Samuel A. Welch ([sam@samwelch.co.uk](mailto:sam@samwelch.co.uk))

**Author roles:** **Welch SA:** Visualization, Writing – Original Draft Preparation, Writing – Review & Editing; **Lane T:** Writing – Original Draft Preparation, Writing – Review & Editing; **Desrousseaux AOS:** Writing – Original Draft Preparation; **van Dijk J:** Writing – Original Draft Preparation; **Mangold-Döring A:** Writing – Original Draft Preparation; **Gajraj R:** Writing – Original Draft Preparation; **Hader JD:** Writing – Original Draft Preparation; **Hermann M:** Writing – Original Draft Preparation; **Parvathi Ayillyath Kutteyeri A:** Writing – Original Draft Preparation; **Mentzel S:** Writing – Original Draft Preparation; **Nagesh P:** Writing – Original Draft Preparation; **Polazzo F:** Writing – Original Draft Preparation; **Roth SK:** Writing – Original Draft Preparation; **Boxall ABA:** Conceptualization, Funding Acquisition, Supervision, Visualization, Writing – Original Draft Preparation; **Chefetz B:** Funding Acquisition, Supervision, Writing – Original Draft Preparation; **Dekker SC:** Supervision, Writing – Original Draft Preparation; **Eitzinger J:** Funding Acquisition, Supervision, Writing – Original Draft Preparation, Writing – Review & Editing; **Grung M:** Supervision, Writing – Original Draft Preparation; **MacLeod M:** Supervision, Writing – Original Draft Preparation; **Moe SJ:** Funding Acquisition, Supervision, Writing – Original Draft Preparation, Writing – Review & Editing; **Rico A:** Funding Acquisition, Supervision, Writing – Original Draft Preparation; **Sobek A:** Supervision, Writing – Review & Editing; **van Wezel AP:** Funding Acquisition, Supervision, Writing – Original Draft Preparation; **van den Brink P:** Conceptualization, Funding Acquisition, Project Administration, Supervision, Writing – Review & Editing

**Competing interests:** No competing interests were disclosed.

**Grant information:** This project has received funding from the European Union's Horizon 2020 research and innovation programme under the Marie Skłodowska-Curie grant agreement No 813124.

*The funders had no role in study design, data collection and analysis, decision to publish, or preparation of the manuscript.*

**Copyright:** © 2022 Welch SA *et al.* This is an open access article distributed under the terms of the [Creative Commons Attribution License](#), which permits unrestricted use, distribution, and reproduction in any medium, provided the original work is properly cited.

**How to cite this article:** Welch SA, Lane T, Desrousseaux AOS *et al.* **ECORISK2050: An Innovative Training Network for predicting the effects of global change on the emission, fate, effects, and risks of chemicals in aquatic ecosystems [version 2; peer review: 2 approved]** Open Research Europe 2022, 1:154 <https://doi.org/10.12688/openreseurope.14283.2>

**First published:** 20 Dec 2021, 1:154 <https://doi.org/10.12688/openreseurope.14283.1>

**REVISED Amendments from Version 1**

This paper has been updated in response to peer reviews. Additional information on deliverables, publications and outreach produced as part of the ECORISK 2050 project, as well as project partners, has been added. Two diagrams, a conference poster summarising the project, and a conceptual model of probabilistic risk assessment have been added. Minor changes have been made to language to clarify some uncertainties raised by reviewers.

**Any further responses from the reviewers can be found at the end of the article**

## Introduction

### Disclaimer

The views expressed in this article are those of the author(s). Publication in Open Research Europe does not imply endorsement of the European Commission.

**Background and aims of ECORISK2050.** As the human population develops and evolves throughout the 21<sup>st</sup> century, certain global changes (GCs) are expected to occur, that could modify the way humans and the environment are exposed to chemicals (EEA, 2015). Intensifying urbanisation is of increasing concern, as growing cities are areas of high population density where chemical consumption is rising, concentrated, diverse, and difficult to manage (Brooks, 2019). Furthermore, the world's growing and urbanising population will require greater clean water supplies and larger quantities of crop and livestock foodstuffs to be produced through agriculture. These challenges will in turn drive the development and usage of novel irrigation methods, fertilizers, pesticides, and pharmaceuticals to adapt to new pests, diseases, and climatic factors (FAO, 2018; van Vuuren *et al.*, 2019; Webb & Buratini, 2016). Thus, technology such as the use of second and third generation nanomaterials, more efficient water reuse techniques, or a transition towards using novel treatments for disease such as biologics, are likely to be increasingly relevant in the near future (Camboni *et al.*, 2019).

Climate change (CC), in unison with other GCs, will affect the overall emissions, environmental transport pathways, and fate of chemicals, changing how chemical exposure occurs in the environment and humans (Bloomfield *et al.*, 2006; Boxall *et al.*, 2009; Gouin *et al.*, 2013). Climate change is anticipated to provoke a range of effects across various levels of biological systems, causing changes at the individual level, such as organisms having an increased or decreased sensitivity to chemicals, shifts at the population level due to altered feeding strategies, and a restructuring of ecosystems due to changes in trophic level complexity and resilience (Hooper *et al.*, 2013; Moe *et al.*, 2013). Certain aspects of CC are of specific interest, such as the effects of overall increased temperatures, which has been previously demonstrated to enhance the toxicity of certain, but not all, chemical stressors (Arenas-Sánchez *et al.*, 2019; Cairns *et al.*, 1978). In addition, extreme weather events, which includes heatwaves, droughts, intense precipitation, and floods, are forecast to occur

more frequently and with greater severity in the future, and these events have the disposition to alter the mobility and ecological interactions of chemicals in and between agricultural and aquatic environments, providing potential pathways for chemical exposure in previously uncontaminated areas (Jiménez Cisneros *et al.*, 2014).

Confronting the challenge of evaluating how GC will affect chemical exposure and risks of wildlife, humans, and the environment they inhabit, requires tackling uncertainty and addressing open questions (Brack *et al.*, 2015; Chapman, 2018; Holmstrup *et al.*, 2010). For instance, the types and concentrations of chemicals released into the environment, the locations and to degrees of exposure to these chemicals, and the vulnerability of communities to climate and chemical stressors in different regions of the European Union could be different under future environmental conditions compared to today (Balbus *et al.*, 2013; Moe *et al.*, 2013). Modern testing approaches and models used for risk assessment of chemicals are not designed for predicting future risks, as they do not take a systems approach, and thus often disregard temperature-fate and effect relationships, novel transport pathways such as (waste)water-reuse scenarios, and the effects of climate-induced stressors on biodiversity and ecosystem functions (Carter *et al.*, 2019; Hooper *et al.*, 2013; Su *et al.*, 2019). Lastly, current approaches to environmental risk assessment (ERA) tend to compartmentalize risks, primarily considering the risks of chemicals in different applications in isolation, and ecological risks are typically treated separately from human health risks (Ågerstrand & Beronius, 2016).

The ECORISK2050 innovative training network was initiated with support from the European Union Horizon 2020 program to support the European Union goal of a non-toxic environment by 2050. Taking a holistic approach to address the many challenges in chemical risk assessment under GC, ECORISK2050 brings together an interdisciplinary team of experts in global change, scenario development, environmental modelling, environmental chemistry, exposure assessment, ecology, ecotoxicology, and risk assessment, drawing on intersectoral input from academic beneficiaries and key stakeholders from the chemical and water industries and regulatory sectors (Table 1). This paper provides an overview of the ECORISK2050 projects as well as the individual sub-projects and scientific questions that will be addressed. The specific research objectives of the project are:

- To assess how the inputs of chemicals from agriculture and urban environments and their fate and transport will be affected by GC for different European scenarios, in order to assess changes in risks to human and ecosystem health.
- To identify potential adaptation and mitigation strategies, which can be implemented in the short and medium term, to abate unacceptable changes in risks, and use the GC scenarios to develop robust implementation pathways for these strategies.
- To develop a set of tools for use by industry and policy-makers that allow the impacts of a range of GC-related drivers on chemical risks to be assessed and managed.

**Table 1. Full summary of ESR primary institutions (in bold), and secondment partners, across academia, the public sector, and industry.**

ESR	Academic/Research	Public/Governmental	Industry/Business
1	<b>Utrecht University</b> University of Natural Resources and Life Sciences	PBL Netherlands Environmental Assessment Agency	
2	<b>University of York</b> Wageningen University		
3	<b>University of Natural Resources and Life Sciences</b> Norwegian Institute for Water Research		Meles GMBH Austrian Chamber of Agriculture
4	<b>University of York</b>		wca environment Ltd
5	<b>Hebrew University of Jerusalem</b> Weizmann Institute of Science		
6	<b>Stockholm University</b> Utrecht University		Käppala Wastewater Treatment Plant
7	<b>Wageningen University</b> IMDEA Water		Bayer AG
8	<b>IMDEA Water</b> Wageningen University Wageningen Environmental Research Ruhr University Bochum Leibniz-Institute of Freshwater Ecology and Inland Fisheries		
9	<b>Stockholm University</b> IMDEA Water	Swedish Environmental Protection Agency	
10	<b>Wageningen University</b> Norwegian Institute for Water Research		ibacon GmbH
11	<b>Norwegian Institute for Water Research</b> Wageningen University IMDEA Water Norwegian Institute of Bioeconomy		
12	<b>Norwegian Institute for Water Research</b> University of York	Norwegian Institute for Public Health	
13	<b>Utrecht University</b> Norwegian Institute for Water Research	KWR Water Research Institute	

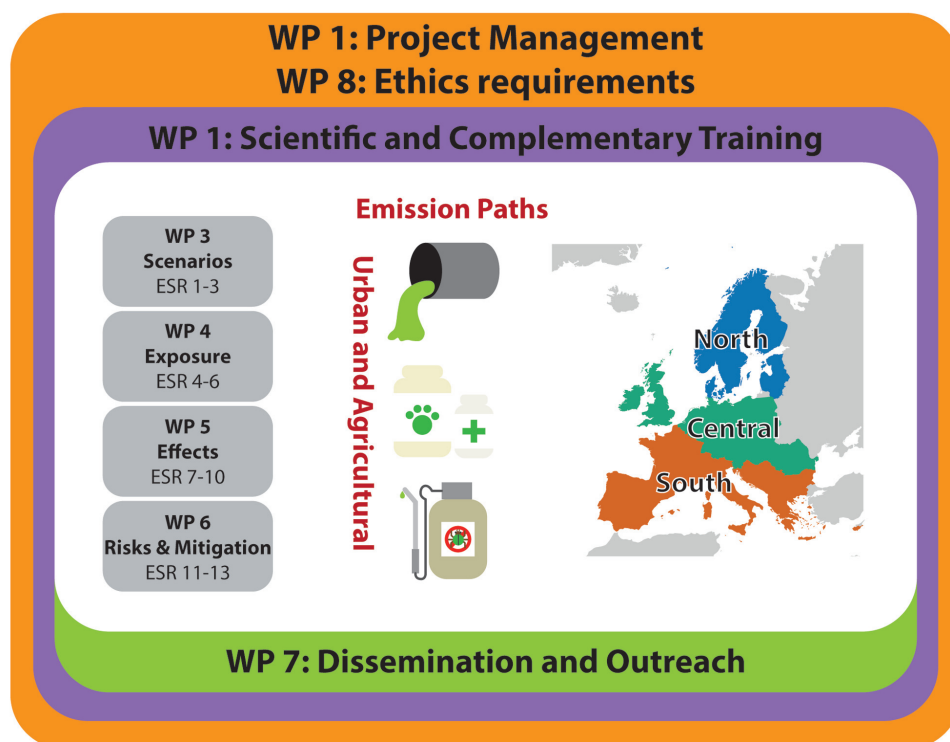
**Project structure.** ECORISK2050 has four interrelated research work packages (WPs 3-6; [Figure 1](#); [Table 2](#)) and three additional WPs (WPs 1, 2, and 7) which focus on management, training, and ensuring impact. The research WPs will address the interaction between global change and environmental risks by developing scenarios for the future and assessing changes in exposure and effects, which will then be integrated in a risk and mitigation WP ([Figure 1](#)). Scenarios will include both agricultural and urban environments located in the southern, central, and northern regions of Europe ([Figure 1](#)).

The ECORISK2050 project comprises 13 sub-projects each delivered by an early-stage researcher (ESR), distributed across four research WPs ([Figure 2](#)). These sub-projects cover scenario development, modelling studies, laboratory and semi-field-based fate and effect studies, as well as environmental

risk assessment and management approaches, to understand how chemical risks will change in a range of GC scenarios, and what effective solutions can be implemented.

The 13 ESRs ([Figure 3](#)) are hosted and supervised by eight beneficiaries and co-supervised by 16 partner organisations. The beneficiaries include six universities and two research institutes, located around Europe (The Netherlands, United Kingdom (UK), Norway, Sweden, Austria, Spain) and in Israel. The partner organisations include research institutes, companies, governmental agencies, a consultancy firm, a university, and a wastewater treatment organisation ([Table 1](#)). The early-stage researchers are all enrolled in a PhD program.

**Work package 3: scenarios.** Scenarios – projections of different possible futures ([Rosentrater, 2010](#)) – have been used by



**Figure 1.** Schematic overview showing the Work Packages and ESR projects included in ECORISK2050.

**Table 2.** Description of the objectives and expected outputs of the four experimental and modelling work packages in the ECORISK2050 project.

Work package	Objectives	Expected output
Scenarios (WP 3)	<ul style="list-style-type: none"> <li>Develop chemical emission scenarios of agricultural and urban systems in Europe under global change, considering circular economy and non-toxic environment options</li> <li>Develop agronomic land use and management scenarios for different representative climate and socioeconomic scenarios</li> <li>Identify main pest pressures considering farm management options under the named scenarios</li> <li>Estimate chemical inputs under different environmental characteristics of selected European agricultural and urban systems</li> </ul>	<ul style="list-style-type: none"> <li>Global climate/land use/agronomic management and emission scenarios downscaled to the three case study regions</li> <li>Chemical emission scenarios of urban systems in selected case study regions</li> <li>Chemical emission scenarios from pest management options under scenarios in selected agricultural systems</li> </ul>
Exposure (WP 4)	<ul style="list-style-type: none"> <li>Develop models for estimating the effects of environmental change on the fate of chemicals in aquatic environments and uptake into organisms with different species traits</li> <li>Develop new models for estimating changes in human exposure to chemicals via crop items resulting from an increase in wastewater re-use systems</li> <li>Develop an exposure modelling framework for estimating concentrations of emerging contaminants in river basins, drinking water, and fish/shellfish, now and in the future</li> </ul>	<ul style="list-style-type: none"> <li>Modelling approaches for estimating the effects of key environmental change parameters on the fate and uptake of chemicals</li> <li>Crop uptake models and human exposure models for contaminants in water re-use systems</li> <li>Exposure modelling framework for estimating effects of environmental change on chemical exposure in river basins and drinking water</li> <li>Future ecological and human exposure scenarios for chemical contaminants</li> </ul>

Work package	Objectives	Expected output
Effects (WP 5)	<ul style="list-style-type: none"> <li>Assess and compare the sensitivity and vulnerability of aquatic populations and communities to global change and chemical pollution under different geographical and biological (community composition) scenarios</li> <li>Quantify the impacts of chemicals on key ecological functions</li> <li>Develop a set of validated <i>in silico</i> tools to evaluate the effects of the chemicals at different levels of biological organisation</li> </ul>	<ul style="list-style-type: none"> <li>Comparison of sensitivity and vulnerability to climate change and chemical stress in different geographical regions</li> <li>New framework for evaluating the influence of community structure and global change on the vulnerability to chemicals</li> <li>EU-level chemical vulnerability maps and scenarios</li> <li>New framework for assessing the resilience of microbial communities to chemical stress</li> <li>Determination of the chemical effects on microbial ecological functions and chemical tolerance limits</li> <li>New modelling framework for assessing the combined effects of chemical and global change stressors</li> </ul>
Risk and Mitigation (WP 6)	<ul style="list-style-type: none"> <li>Assess and compare the sensitivity and vulnerability of aquatic populations and communities to global change and chemical pollution under different geographical and biological (community composition) scenarios</li> <li>Quantify the impacts of chemicals on key ecological functions</li> <li>Develop a set of validated <i>in silico</i> tools to evaluate the effects of the chemicals at different levels of biological organisation</li> </ul>	<ul style="list-style-type: none"> <li>Comparison of sensitivity and vulnerability to climate change and chemical stress in different geographical regions</li> <li>New framework for evaluating the influence of community structure and global change on the vulnerability to chemicals</li> <li>EU-level chemical vulnerability maps and scenarios</li> <li>New framework for assessing the resilience of microbial communities to chemical stress</li> <li>Determination of the chemical effects on microbial ecological functions and chemical tolerance limits</li> <li>New modelling framework for assessing the combined effects of chemical and global change stressors</li> </ul>

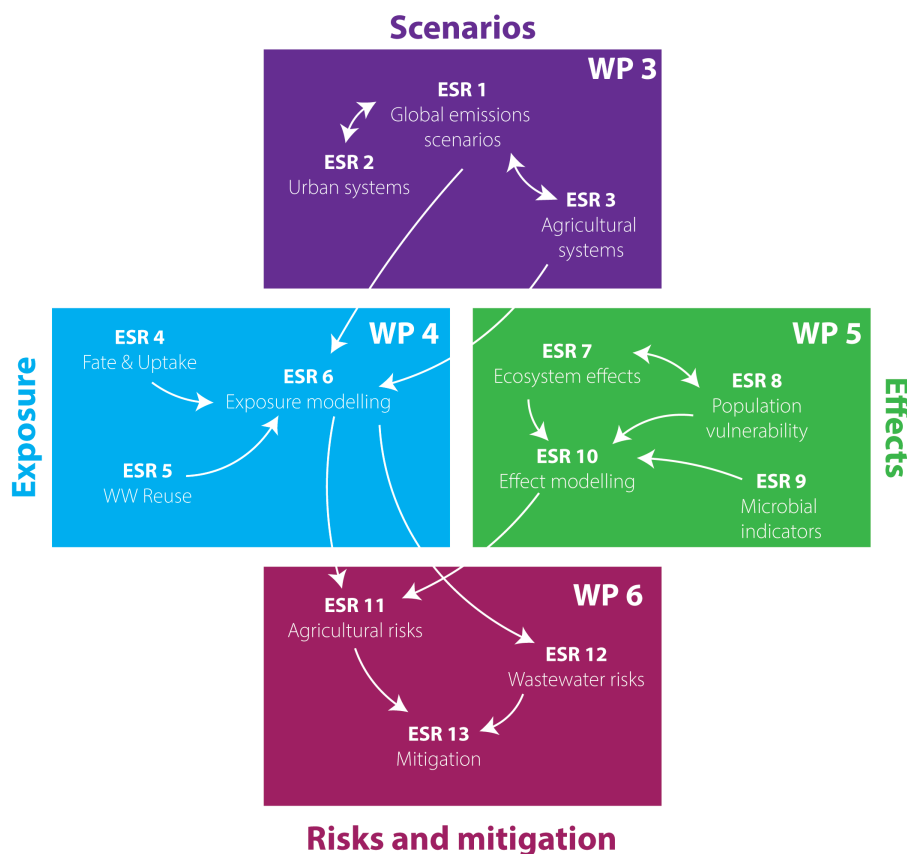


Figure 2. Scheme illustrating the interlinkages between the 13 ECORISK2050 ESR projects.



## ECORISK2050: Emission, fate, effects and risks of chemicals in aquatic ecosystems under global change



S. Welch, P. van den Brink, B. Chefetz, S. Dekker, J. Eitzinger, M. MacLeod, J. Moe, A. Rico, M. Vighi, A. van Wezel, A. Boxall  
Corresponding author: Jannicke Moe, [jmoe@iwa.no](mailto:jmoe@iwa.no), Norwegian Institute for Water Research, Gaustadalleen 21, NO-0348, Oslo, Norway

The Innovative Training Network ECORISK2050 is a training platform for the assessment of chemical risks in 2050 under the influence by global climate change and urbanization. This interdisciplinary consortium consists of 13 PhD students, and 8 universities and research institutes, supported by 14 industry and regulatory governmental partners.

### Modelling Exposure to Pharmaceuticals and Pesticides

**4. Chemical fate and uptake**  
Taylor Lane — University of York, UK

**5. Wastewater reuse exposure**  
Anju Ayillyath — Hebrew University of Jerusalem, Israel

**6. Modelling aquatic exposure in rivers**  
John Hader — Stockholm University, Sweden

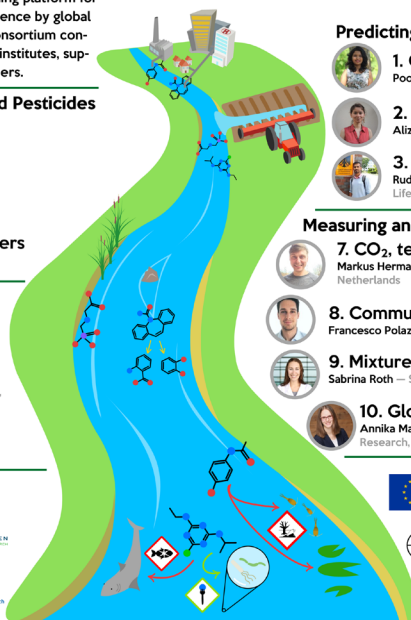
### Assessing Risks and Planning Mitigation

**11. Forecasting agricultural risk**  
Sophie Mentzel — Norwegian Institute for Water Research, Norway

**12. Predicting pharmaceutical risk**  
Samuel Welch — Norwegian Institute for Water Research, Norway

**13. Developing mitigation strategies**  
Joanke van Dijk — Utrecht University, The Netherlands

### Beneficiaries:



### Predicting Scenarios of Global Change

**1. Climate scenarios in Europe**  
Poornima Nagesh — Utrecht University, The Netherlands

**2. Urban chemical emission scenarios**  
Alizée Desrousseaux — University of York, UK

**3. Agricultural chemical emissions**  
Rudrani Gajraj — University of Natural Resources and Life Sciences, Vienna, Austria

### Measuring and Modelling Ecotoxicological Effects

**7. CO<sub>2</sub>, temperature and community effects**  
Markus Hermann — Wageningen University and Research, The Netherlands

**8. Community composition and vulnerability**  
Francesco Polazzo — IMDEA Water Institute, Spain

**9. Mixture toxicity and microbe communities**  
Sabrina Roth — Stockholm University, Sweden

**10. Global change, chemicals & communities**  
Annika Mangold-Döring — Wageningen University and Research, The Netherlands

This project received funding from the EU Horizon 2020 program under Marie Skłodowska-Curie grant agreement No 813124.



**Figure 3.** Conference poster designed for ECORISK2050 to summarise project themes and contributions of ESRs. Author's work.

the scientific community for decades to analyse climate change (van Vuuren *et al.*, 2012). They are an essential tool for stakeholders – politicians, public institutes, and private companies – to aid effective decision-making and move towards a desired future (Pilli-Sihvola *et al.*, 2015). The scenario work package will develop qualitative and quantitative scenarios for chemical emissions at urban, agricultural, and regional scales in the future. Chemical emissions will be studied and divided into five categories with different drivers and sources: pharmaceuticals, personal care products, pesticides, industrial chemicals, and food chemicals. ECORISK2050 scenarios will be based on shared socio-economic pathways (SSPs), a scenario framework for socio-economic change research. SSPs are qualitative scenarios describing five alternative future societies based on changes in demographics, human development, economics and lifestyles, technology, and environment and natural resources. These drivers lead to societies where adaptation to challenge and mitigation of impacts range from easier to harder to implement. Representative concentration pathways (RCPs) - quantitative projections of future levels of greenhouse gases - will also be used, and the combination of SSPs and RCPs will allow us to study possible future societies in the context of projected greenhouse gas concentrations (O'Neill *et al.*, 2014). Within ECORISK2050, scenarios will be specifically adapted to urban, agricultural, and regional scales, and to chemical emissions, which will address difficulties stakeholders have in using scenarios that are not relevant or specific enough to individual contexts (Carlsson *et al.*, 2018). This will

require that drivers to be adapted to chemical emissions and to specific types of chemicals. Thus, we aim to study and quantify chemical emissions scenarios, under not only climate change, but socio-economic, technological, and lifestyle change as well. To summarise, pharmaceuticals, personal care products, pesticides, industrial chemicals, and food chemical scenarios will be developed based on SSPs and RCPs. These scenarios will focus on developing qualitative and quantitative measures of global change at the following spatial scales:

- Global chemical emission scenarios downscaled for three European regions located in northern, central, and southern Europe, specifically driven by agronomic land-use changes and management.
- Local-level scenarios focusing on chemical emissions in urban environments.

Chemical emission scenarios will then be used to drive models for the exposure, effect, and risk assessment packages.

### ESR 1: Global chemical emission scenarios

The high production and widespread use of chemicals for a range of applications has resulted in their continuous release and omnipresent distribution in the environment (Bai *et al.*, 2018). A key challenge in assessing the risk of chemical pollution and their environmental impact is producing reliable estimates of chemical releases into the environment (Arnot *et al.*, 2012; Douziech *et al.*, 2018). The sheer number of chemicals and



range of emissions sources (industrial, agricultural, residential, among others) makes it a complex task to estimate chemical emissions. At present, there are over 350,000 chemicals and mixtures of chemicals registered for production and use (Wang *et al.*, 2020), with continuous addition of new chemicals in the market (van Wezel *et al.*, 2017).

The use of chemicals is expected to grow rapidly driven by drivers such as demographic change (Bunke *et al.*, 2019), population growth, change in consumption patterns and climate change (Mateo-Sagasta *et al.*, 2018), which could lead to further emissions of chemicals, posing significant water quality concerns. This creates the need to understand the multitude of chemical emissions over time. To better understand how the future chemical emissions will change, it is important to understand how socio-economic drivers will influence the production and use of chemicals. Socio-economic scenario analysis has been a useful tool in investigating the long-term consequences of anthropogenic change and mitigation options (Krieger *et al.*, 2012).

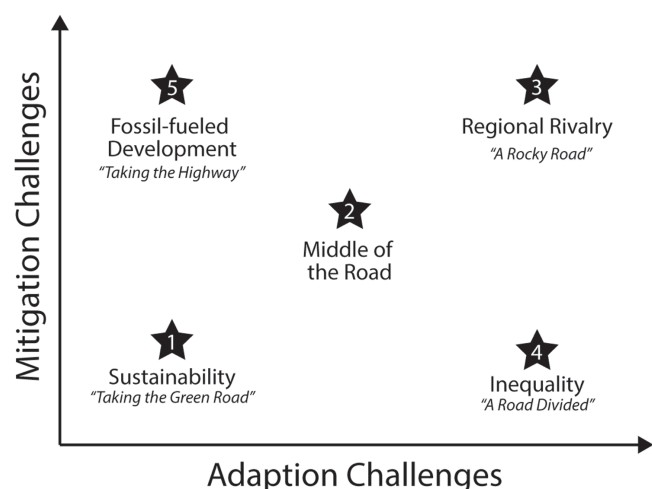
In this component of the ECORISK2050 project, socio-economic scenario analysis will be used to understand the past, current, and possible chemical emission trends that are mediated by socio-economic drivers. SSPs from the [Integrated Model to Assess the Global Environment \(IMAGE3.0\)](#) model will be used as input for our empirical emission models to develop emission scenarios for chemicals (Figure 4). Regional and global emission scenarios will include three SSP scenarios: SSP1 (“Sustainability”), SSP2 (“Middle of the Road”) and SSP3 (“Regional Rivalry”), including changes in animal husbandry. Future chemical emissions will be estimated based on emission factors and activities (e.g., total population, GDP, harvested area, crop production, feed stock, sector value added, among others) for industrial chemicals, pesticides, and pharmaceuticals in Europe. Regional emission scenarios will focus on three different regions (northern, central, and

southern Europe) for to the future until the year 2100. The developed chemical emission scenarios will be used to model the combined chemical load of multiple chemicals on surface waters and their impacts on water quality. Furthermore, target scenarios will be developed describing mitigation efforts

### ESR 2: Urban emission scenarios

Cities and other urban environments are attractive areas to live with access to public services, employment, culture, and other types of leisure (Ruth & Franklin, 2014). The high concentration of population and industries in urban areas requires the use of great quantities of chemicals, causing chemical pollution in the surrounding aquatic environment. This pollution usually results from ineffective wastewater treatment, or direct release into the environment through leakage (Petrie *et al.*, 2015). From heavy metal-contaminated cigarette butt leachate causing cellular abnormalities in mussels (Montalvão *et al.*, 2019), to air pollution provoking the development of respiratory and cardiovascular diseases in humans (Sciaraffa *et al.*, 2017), urban chemical pollution is causing worldwide adverse effects and is negatively affecting cities’ liveability (Martínez-Bravo *et al.*, 2019).

Present and future risks of chemical pollution in cities will be studied in ECORISK2050 with spatial and temporal models and scenarios development. Chemical emissions for the year 2050 will be studied for the cities of York (UK), Madrid (Spain), and Oslo (Norway). To focus scenarios and models on the most toxic chemicals, prioritisation of chemicals in urban environments will first be conducted based on published measurements of pollutant concentrations in cities, and a priority list of chemicals for urban environments will be developed. A one-year monitoring of rivers in York, Madrid and Oslo will then be conducted upstream, within, and downstream of the city centre and wastewater treatment plants. A spatial and temporal model to estimate current chemical emissions to the aquatic environment will then be constructed using data collected.



**Figure 4.** Five SSPs representing different combinations of challenges to mitigation and to adaptation. Original work, based on O'Neill *et al.*, 2014.

To analyse different emission situations up to 2050, local urban scenarios will be developed. First, SSPs in combination with RCPs will be downscaled to local scenarios. At local workshops, stakeholders, such as public representatives, local business leaders, retailers, schoolteachers, and wastewater treatment engineers, will provide input to the development of qualitative scenarios that will represent realistic storylines for development up to 2050. While the three cities’ scenarios will be driven by common large-scale factors, demographic and geographic specificities of each city will also be implemented. These scenario storylines for each city will then be translated into corresponding emission scenarios and chemical concentration trends in the environment by 2050. The list of priority chemicals, scenarios and modelled concentrations will be shared with exposure, effect, and risk assessment work packages as a basis for assessment on the species and community level.

### ESR 3: Agricultural emission scenarios

Agricultural chemicals include chemical fertilisers and plant protection products (PPPs) such as herbicides, insecticides,

and fungicides, and are used to stimulate crop productivity (Lamichhane *et al.*, 2016). Their residues pose a significant threat to small streams and catchments (Beketov & Liess, 2008). Pesticide consumption in the EU continues to increase in spite of rising restrictions on their use (Jess *et al.*, 2014; Lamichhane *et al.*, 2016), due to the increased metabolic activity, reproduction, and survival of pests (FAO, 2019). Simultaneously, climate change is expected to further affect crop yields, soil fertility, pesticide use, and nutrient runoff in Europe (Deutsch *et al.*, 2018; Eitzinger *et al.*, 2013; Kocmánková *et al.*, 2009; Olesen *et al.*, 2011).

Predicted impacts of specific pests on agricultural production under emission scenarios determined by simulation models covering shorter time periods have been made available (Eitzinger *et al.*, 2013; FAO, 2019) but are still under evaluation (Deutsch *et al.*, 2018; Svobodová *et al.*, 2014). Entomologists face several challenges in modelling pest impacts, and have proposed semi-quantitative and quantitative approaches to determine the abundance, distribution, phenology, physiology, population dynamics, seasonal dynamics, and timely forecasts (short-term, and long-term) of pests. Existing insect modelling approaches usually focus on individual components of the system devoid of crop growth requirement and management patterns (Tonnang *et al.*, 2017). Quantitative pest simulation models are required to build predictions on pest risks under different climate change and crop management scenarios. However, many current approaches do not consider meteorological drivers, and are not connected to chemical emission rates, or show little accuracy in simulating emission rates at high temporal resolutions. For the ECORISK2050 project, the database of selected agroecosystems from case study regions (Norway, Austria) for pest models will be established, followed by identification and investigation of critical chemical emission risks and pest pressures, under the applied scenario combinations of climate and crop management.

A modelling framework is required which uses daily gridded meteorological data and spatially varying soil and agricultural practice data for simulating processes in the soil, atmosphere, and vegetation compartments (Li & Jin, 2013). SSP scenarios will be used to estimate future emission factors and for down-scaling to the case study regions in Norway and Austria (Li *et al.*, 2005). At the regional scale, scenarios for site-specific cropping patterns, pest risks and multiple weather-related risk assessment will be examined. Agricultural emission scenarios will be modelled, including a reference scenario based on SSPs, climate change scenarios based on the outputs of general circulation models (GCMs) using RCP 2.6, 4.5, and 8.5, and existing crop and pest models.

**Work package 4: Exposure.** Modelling the chemical fate of environmental pollutants, from source to receptor, offers risk assessors and regulators the predictive capabilities required to make knowledge-based decisions that are protective of ecological and human health (Di Guardo *et al.*, 2018; Su *et al.*, 2019). Various direct and indirect factors related to GC over the coming decades are expected to influence the emissions, fate,

and transport of environmental pollutants, not only through alterations to the environment but also through shifts in demographic and socio-economic patterns, and this will alter chemical exposure routes for humans and the environment (Balbus *et al.*, 2013).

For instance, a review by Lamon *et al.* (2009) discussed possible ways that changes in temperature, precipitation, and other environmental factors could influence the behaviour and fate of persistent organic pollutants in the environment. While several modelling studies have investigated the impact that changes in some of these environmental factors could have on chemical fate and transport, and found modest impacts (changes up to an order of two to three-fold), these studies focused on neutral organic compounds rather than ionizing compounds (Gouin *et al.*, 2013; Kong *et al.*, 2014). Furthermore, extreme weather events are becoming more frequent as a consequence of CC and the associated implications for chemical fate and transport, particularly from intense precipitation events, warrants further development of modelling scenarios (Boxall *et al.*, 2009). Additionally, the use of reclaimed wastewater and biosolids in agriculture is forecast to increase in the future, thereby altering the emissions of contaminants to the environment and creating a need to investigate how the type, fate, and transport of chemicals from these emission sources may change under projected climate conditions (Boxall *et al.*, 2009; Carter *et al.*, 2019; Fu *et al.*, 2019).

Ultimately, existing exposure modelling approaches have so far not fully captured all anticipated aspects of GC (Boxall *et al.*, 2009; Di Guardo *et al.*, 2018). Therefore, specific research aims of ECORISK2050 are to:

- Develop models for estimating the effects of environmental change on the fate, uptake, and metabolism of pharmaceutical and agricultural chemicals in aquatic systems and organisms under future water chemistry parameters.
- Develop new models for estimating changes in human exposure to pharmaceuticals and agricultural chemicals via crop items resulting from an increase in wastewater reuse systems; and
- Develop a fate, transport, and exposure modelling framework for estimating concentrations of pharmaceuticals and agricultural chemicals in river basins, drinking water, and fish/shellfish, as well as the present and future associated human and ecological exposure concentrations.

By combining the parameterisation work with the modelling frameworks and emissions scenarios (WP 3), the research discussed in this section will provide the exposure information required for the risk assessment and mitigation work (WP 6) performed by ESRs 11–13.

#### **ESR 4: Fate, uptake, and metabolism of novel contaminants in aquatic environments**

Freshwater environmental quality leading up to 2050 and beyond is anticipated to shift in response to aspects of GC such

as land use conversions related to urbanisation, agricultural practices, environmental pollution, and climate change (Gouin *et al.*, 2013; Jiménez Cisneros *et al.*, 2014). For example, increases in surface water temperatures, increased loads of organic carbon, decreases in freshwater pH, and increases in salinity for systems that are prone to saltwater intrusion, are all possible or likely in the future (Hasler *et al.*, 2018; Hoegh-Guldberg *et al.*, 2018; Noacco *et al.*, 2017; Webb & Nobilis, 2007).

Chemical fate processes in aquatic environments such as sorption, volatilisation, degradation, and bioaccumulation, can be influenced by changes in these factors; as an example, temperature increases the rate of chemical and biological reactions, while pH affects the uptake of ionisable chemicals (Gouin *et al.*, 2013). Incorporating the various effects that changes in these environmental conditions can have on chemical fate processes into multimedia fate and exposure models is becoming increasingly relevant (Di Guardo *et al.*, 2018), particularly for an expanded chemical domain which focuses on ionisable chemicals and chemical transformation products (Franco *et al.*, 2010).

Therefore, the ECORISK2050 project aims to determine how predicted shifts in future environmental conditions will influence the fate of emerging chemical contaminants representing a range of physicochemical properties. Bioaccumulation and the metabolism of chemical compounds will also be investigated in freshwater organisms with contrasting species-specific traits. Conjointly, the fate and uptake studies will support generating modelled predictions for external and internal exposure concentrations of emerging chemical contaminants of concern under future environmental conditions. Experimental studies will also evaluate the effects of changing environmental conditions (e.g., temperature and moisture content) on key fate processes such as sorption and biodegradation.

#### ESR 5: Agricultural systems and wastewater reuse exposure

Water shortage is one of the most serious environmental issues faced worldwide (Sapkota, 2019) and is an especially major concern in arid and semi-arid regions. Water-related issues are increasing with GCs like population growth, altered weather patterns and increased pollution. Meanwhile, agricultural sectors contribute 92% of global water consumption (Hoekstra & Mekonnen, 2012). Thus, wastewater irrigation has been identified as an efficient practice to manage the enormous water stress in agricultural practices (Goldstein *et al.*, 2014). In Israel, more than 70% of the wastewater produced is reused, and more than 85% of treated wastewater is used for agricultural applications (Bixio *et al.*, 2006; Goldstein *et al.*, 2014).

Simultaneously, pharmaceutical and personal care products (PPCPs) have become an integral part of day-to-day life. Consequently, the parent compounds and by-products of PPCPs have been detected in domestic wastewater (Ternes *et al.*, 2007). Conventional treatment technologies are not sufficient to completely remove PPCPs from wastewater (Andreozzi *et al.*, 2004), meaning these chemicals can leach into the soil through wastewater irrigation. PPCPs and their metabolites, having low

sorption affinity and high mobility in soil, can contaminate nearby sources of water (Paz *et al.*, 2016). Those pharmaceutical compounds that have a high resistance to biodegradation will accumulate in soil, and as a result, their uptake by plants will increase (Grossberger *et al.*, 2014). Furthermore, pharmaceutical compounds will accumulate in higher concentrations in crops grown in soils with low organic matter and clay content (Ben Mordechay *et al.*, 2018; Goldstein *et al.*, 2014). The presence of PPCPs and their metabolites in the agricultural environment raises concerns due to the potential ecological and health risk associated with human exposure to these pollutants (Paltiel *et al.*, 2016; Schapira *et al.*, 2020). These risks can be more serious in countries where raw wastewater or semi-treated wastewater is used for irrigation (Carter *et al.*, 2019).

Knowledge about the uptake, accumulation, and transformation potentials of PPCPs in plants, as well as plant uptake of PPCPs in various soil conditions, is limited (Fu *et al.*, 2019; Wu *et al.*, 2015). An extensive study on soil, water, and food contamination by PPCPs would be beneficial for understanding the potential human health risk and degree of treatment required for the agricultural reuse of wastewater. This experimental work within the ECORISK2050 project will explore the fate and behaviour of pharmaceutical compounds in the agricultural environment, and these data will be used to develop crop uptake and exposure models for wastewater reuse farming systems.

#### ESR 6: Human and aquatic environment exposure scenarios

Linking of the GC scenarios developed within ECORISK2050 to the fate, transport, and uptake of pharmaceuticals and agricultural chemicals in aquatic environments will be accomplished using exposure modelling framework at a range of spatial scales. Modelling scenarios will consider aquatic and land-based fate processes, direct aquatic emissions from STPs, and emissions due to the application of pesticides, reused wastewater, and biosolids to agricultural fields. Local/catchment-scale modelling will likely employ a multimedia watershed chemical fate model such as the INCA-Contaminants model (Nizzetto *et al.*, 2016). Such models are capable of describing transient/extreme precipitation events on chemical fate; this environmental factor is likely to change due to CC (e.g., Boxall *et al.*, 2009) but its impacts on the chemical fate of a wide variety of chemicals is not well established. Regional/continental-scale fate and transport modelling will consider emissions from European sewage treatment plants (as in Grill *et al.* (2016)) as well as runoff emissions from agricultural regions and will likely utilise a version of the BETR modelling framework (Gouin *et al.*, 2013; Wöhrschimmel *et al.*, 2013) with possible enhancements, to better represent European river and lake environments. Emissions from STPs can be determined using the SimpleTreat 4.0 model (Struijs, 2014), accounting for changes to the influent wastewater resulting from global change (e.g., temperature and population increase). Environmental parameters used in the chemical fate modelling will reflect various CC scenarios (e.g., Kong *et al.*, 2014) and the impacts of changes in long-term averages as well as changes in short-duration events on chemical fate will be explored. Fate

and exposure modelling will be conducted in the context of a chemical property space, for the range of properties associated with pharmaceuticals and agricultural chemicals (similar to Gouin *et al.*, 2013; and Wöhrnschimmel *et al.*, 2013); however, integrated exposures can also be determined considering the projected use of chemicals with specific properties.

Using the ACC-HUMAN model (Czub & McLachlan, 2004) or a similar bioaccumulation model along with country-resolved ingestion rates of fish and shellfish (e.g., EFSA, 2011), ingestion exposure estimates will be derived for humans. Estimated removal of chemicals through surface water purification could also be considered to estimate drinking water exposures. The exposure estimates derived from this modelling, combined with the agricultural-based ingestion exposures estimated by ESR 4, will provide a complete picture of human exposure to ingestion of pharmaceuticals and agricultural chemicals under the GC scenarios.

**Work Package 5: Effects.** The influence of anthropogenic activities and climate change is not only expected to modify chemical exposure, but also to be responsible for dramatic changes to the physiology of aquatic organisms and the structure of aquatic ecosystems, which can influence their sensitivity and recovery capacity to chemical stress (Moe *et al.*, 2013). For example, an increase in water temperature is generally related to a higher toxicity of chemicals, but also contributes to shorter recovery times in affected populations (Arenas-Sánchez *et al.*, 2019). On the other hand, future alterations of water temperatures, nutrient availability and hydrological regimes are expected to affect species interactions and to modify the structure of aquatic communities (Jackson *et al.*, 2016), thus influencing their biological trait distribution and their resilience to specific chemical stressors.

The extent to which GC stressors are going to affect ecosystems in Europe is not spatially homogeneous, and the tolerance of aquatic organisms to the combination of GC stressors and chemical pollutants will likely also vary across biogeographic regions (Van den Berg *et al.*, 2019). Thus, any investigation of the responses of aquatic ecosystems to chemical pollution requires the evaluation of aquatic organisms under local exposure and stress conditions. For this purpose, novel approaches, and tools to manipulate environmental variables in multiple species test settings (micro and mesocosms) will be developed within ECORISK2050. Furthermore, the extent to which aquatic communities can tolerate the influence of complex chemical mixtures and their capacity to maintain ecosystem functions will be investigated to assess the potential for disruption of ecosystem services in alternative future scenarios.

The aim of this WP will be to investigate the interactive effects of GC stressors and chemical pollution on ecosystem structure and function, and to develop a set of tools that allow the integration of GC on future chemical effect assessments and on the derivation of environmental quality standards. Particularly, the work programmed within this WP is intended to:

- Describe the interactive effects of GC stressors and chemical pollution on aquatic populations and communities.

- Compare the sensitivity and vulnerability of aquatic ecosystems to chemical pollution and GC in different biogeographic regions of Europe.
- Develop and test new concepts for assessing the effects of complex chemical mixtures on ecosystem structure and functioning.
- Develop a set of *in silico* tools capable of integrating GC stressors on the risk assessment of chemicals at different levels of biological organisation.

#### **ESR 7: Combined effects of stress posed by global climate change and chemicals**

In the context of global climate change, increased mean temperatures and a lower water pH can be expected (Masson-Delmotte *et al.*, 2021). Besides these gradual environmental changes, there is growing empirical and computational evidence of increases in the severity and frequency of extreme weather events, such as heatwaves or warm spells, until the end of this century (Donat & Alexander, 2012; Meehl & Tebaldi, 2004; Woolway *et al.*, 2021). Climate-chemical effect studies have mainly applied increased mean temperatures in constant temperature regimes (Holmstrup *et al.*, 2010; Noyes *et al.*, 2009), instead of environmentally realistic daily temperature fluctuations, including seasonal variations (Willming & Maul, 2016; Willming *et al.*, 2013). However, with these fluctuations having more adverse effects than elevated mean temperatures on species under chemical stress, the importance of temperature variability and high environmental realism is highlighted (Vasseur *et al.*, 2014; Verheyen & Stoks, 2019). Therefore, a constant temperature regime might not be representative of exposure conditions in natural habitats where temperature variation and extreme events may occur, now and in the future.

In contrast to climate change-driven temperature fluctuations, which have been relatively intensively investigated in aquatic systems, far less is known about how changes in dissolved CO<sub>2</sub> concentrations affect the ecology of freshwater systems (Andersen *et al.*, 2005; Christensen *et al.*, 2006). To our knowledge, no studies have examined the combination of CO<sub>2</sub> and chemical stressors on freshwater populations, communities, or ecosystems, although the effects of CO<sub>2</sub> increases mediated by ocean acidification have been investigated (Hasler *et al.*, 2018).

Research under ECORISK2050 will focus on enabling the manipulation of GC-influenced environmental variables in mesocosms using a mobile, multifunctional device. The device will be used to assess the sensitivity and recovery capacity of freshwater populations and communities exposed to pesticides and future GC-scenarios, in mesocosms along a south-to-north gradient in Europe. Finally, these experiments will be used to identify different adaptive capacities and sensitivities to GC-relevant combinations of multiple stressors.

#### **ESR 8: Multiple stressor effects on ecosystem vulnerability**

This research project investigates the interactions between GC and toxic chemicals in modelled and experimental freshwater systems at the population, community, and ecosystem level.



The examination of the responses to multiple stress sources at different levels of biological organisation will be conducted through several micro- and mesocosm experiments simulating both lentic and lotic conditions. By doing so, peculiar features of the aquatic communities and populations, such as resistance, recovery and resilience will be studied under future exposure conditions and using additional stressors (e.g., eutrophication, hydrological stress). Eventually, the multidimensional concept of ecological stability (Donohue *et al.*, 2013) will be used for the first time to quantify multiple stressor effects on populations and communities. This approach will be used to derive recommendations for future ecosystem management.

Alongside the experimental work, a new modelling framework will be developed. The framework will be based on the common currency of biological traits. Biological traits have recently been used to assess the sensitivity of aquatic invertebrates to both known toxic chemicals and GCC variables separately (Sandin *et al.*, 2014; Van den Berg *et al.*, 2019). Taking advantage of the collaboration and expertise of the project partners, data and models will be combined to develop a new modelling framework, able to assess aquatic invertebrates' vulnerability to the combined effects of climate change and chemicals by 2050 at the European level. Particularly, maps describing changes in the relative portion of invertebrates that are sensitive to chemicals with different modes of action in different geographic areas will be delivered. The framework will be composed of several steps and data will be gathered from numerous databases. First, present climatic and hydrological conditions will be studied and used as a baseline to produce predictions on future climatic and hydrological variables (Schneider *et al.*, 2013). Then, data on present species distribution will be combined with the predicted future environmental conditions to assess how species distribution is likely to change by 2050. The derived future species distribution will be used to predict the vulnerability of aquatic invertebrates to chemicals with different modes of action by 2050, based on species traits related to sensitivity and population recovery.

#### **ESR 9: Effects of chemical mixtures on microbial communities**

Microbes are the largest part of the earth's biomass and are key components of biogeochemical processes (Falkowski *et al.*, 2008). Disturbance of microbial services can thus cause significant harm to environmental systems. Microbial communities have a high level of diversity and can rapidly modify their energetic performance and activity to respond to changing environmental conditions, including chemical pollution or GC stressors (Acosta-González & Marqués, 2016). Given the overall good understanding of bacterial cells, their short generation times, and the ease of studying bacterial responses in the laboratory, bacteria offer an excellent, yet underutilised, approach for assessing the biological activity of chemical pollutants in a changing climate (Girotti *et al.*, 2008; van Wezel & Opperhuizen, 1995).

Recently published studies report the effects of single contaminants on microbial communities, but knowledge about impacts of the combination of chemicals occurring in the environment is still scarce (Milan *et al.*, 2018; Yan *et al.*, 2018). The

two main reasons for this lack of knowledge are: 1) measuring concentrations of all potential contaminants in the environment is unrealistic due to the technical challenges and analytical costs, and 2) the sum of measured concentrations for different chemicals does not provide information about the exposure level of the mixture, because toxic concentrations are compound-specific. This makes the exposure, hazard, and risk assessments of chemical mixtures in the environment extremely challenging (Gobas *et al.*, 2018). The concept of 'chemical activity' offers a way to overcome these constraints for chemical mixtures of neutral chemicals at concentrations below their specific toxic concentration, by enabling the conversion of concentrations of various chemicals into a common, unitless currency (Gobas *et al.*, 2018). In such cases, when many neutral organic chemicals are present at low concentrations, additive toxicity is often observed (Escher *et al.*, 2002). This holds true even when the substances are not related chemically or exhibit different modes of action when acting alone at acute levels (Escher & Hermens, 2002). This phenomenon is defined as baseline toxicity, or narcosis (Escher *et al.*, 2002) and is related to disturbances in cell membrane functioning (van Wezel & Opperhuizen, 1995). As more hazardous, persistent, and toxic chemicals are expected to be used worldwide, the concept of chemical activity offers an integrative tool to quantify the biological potency of chemical mixtures. During this project, experiments will be implemented to analyse mixture effects on the structure and function of microbial communities to open the way for a better understanding of the effects of chemical mixtures in a changing environment.

#### **ESR 10: Modelling the interaction between climate change and chemical effects**

Ecosystems in the real world are subject to a variety of stressors acting on different levels of biological organisation (individual, population, community, and ecosystem). Empirically examining all possible stressor interactions at all biological levels is constrained by time and resources, even when focus is limited to freshwater systems. Thus, supplementary to the experimental studies approach, *in silico* modelling approaches are needed to detect important mechanistic links between multiple stressors (i.e., chemicals and GC) and their effects on freshwater ecosystems, and support ecological risk assessments.

Mechanistic effect models, like toxicokinetic-toxicodynamic modelling approaches, are becoming more accepted in the field of environmental risk assessment (Ockleford *et al.*, 2018). While these approaches focus on chemical stressors, GC-related stressors are rarely included. However, exposure to chemicals at higher temperatures can alter toxicokinetics, resulting in observations of increased or reduced effects on the exposed organism (Harwood *et al.*, 2009). Furthermore, chemical, and GC-related stressors can affect different levels of biological organisation directly or indirectly (Bracewell *et al.*, 2019). It is therefore important to understand the joint effects caused by chemicals and GC-related stressors as well as how they can be transferred from lower to higher levels of biological organisation.

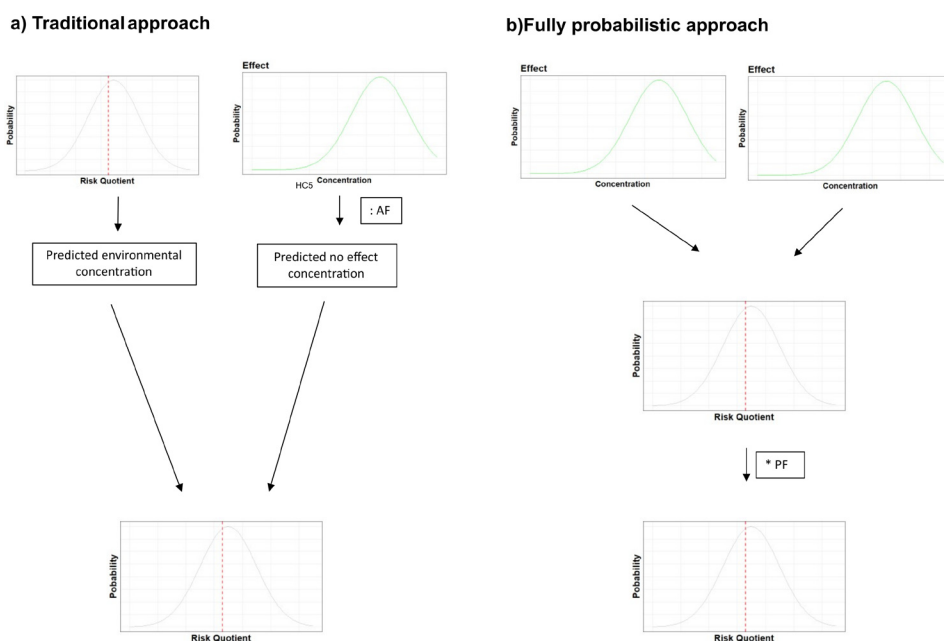
This research aims to extend existing modelling frameworks (e.g., toxicokinetic-toxicodynamic modelling and DEBtox—dynamic-energy-budget theory) to enable predictions under future multiple stressor scenarios. To that end, a modelling tool for assessing the combined effects of temperature and pesticides on individual freshwater invertebrates will be developed. In a bottom-up approach, individual responses will be propagated to higher levels of biological organisation, using individual-based models like ChimERA (De Laender *et al.*, 2014). Additionally, theoretical modelling approaches will be used to investigate the role of intra- and inter-species relationships in population and community response to chemical and GC-related stressors. Ultimately, these tools could be implemented in chemical effect assessment by preceding and informing experimental investigations through extrapolations to future climate conditions.

**Work Package 6: Risks and mitigation.** Prospective ERAs are essential to assess the potential consequences of predicted exposure to hazardous chemicals for natural ecosystems, as a basis for informed risk management decisions. In Europe, ERAs need to be carried out according to chemical legislations, which are based on the precautionary principle to safeguard human and environmental health (EFSA, 2013). An ERA is usually defined in probabilistic terms, such as “evaluating how likely it is that the environment may be impacted as a result of exposure to one or more environmental stressors [...]” (EPA, 2014). Nevertheless, traditional ERA frameworks do not estimate the probability of adverse outcomes, but rather a single-value risk quotient: the ratio of the measured or predicted environmental concentration (PEC) of a chemical to the predicted no-effect concentration (PNEC) (EEA, 1998). The PNEC corresponds to the highest concentration at which no adverse effects are observed in any tested species, modified by various assessments factors to

account for limited information and other sources of uncertainties. This outcome has a binary interpretation: if the risk quotient for a given scenario exceeds 1, then the substance is considered to present a potential risk to the environment, otherwise the substance is considered safe.

Although such risk assessment frameworks have been used for decades, they have also been criticized for being opaque and handling uncertainties in subjective ways (Verdonck *et al.*, 2003). Moreover, regulatory ERAs are traditionally based on single substances using single species tests performed in controlled lab conditions, and therefore must be extrapolated to assess and predict risks that chemicals and their mixtures pose to the real environment (Topping *et al.*, 2020). Current risk assessment methods often include some probabilistic components (Figure 5), such as the species sensitivity distribution to characterise effects (Posthuma *et al.*, 2019). However, past efforts to apply fully probabilistic methods for risk calculation, accounting for uncertainty in both exposure and effects, have posed challenges for calculation, visualisation and communication to stakeholders (Jager *et al.*, 2001).

Bayesian networks (BNs), a graphical probabilistic modelling tool, are a promising method for improving ERA (Hart & Pollino, 2008). However, despite many recent examples (reviewed by Kaikkonen *et al.*, 2021), the method is still not incorporated into regulatory frameworks. In this work package, we will explore the potential of BN modelling to explicitly account for uncertainties in both exposure and effects, from both single chemicals and mixtures, from both agricultural and urban sources. This approach will also include uncertainty in projections from future climate and demographic scenarios (WP 3).



**Figure 5. Comparison of traditional ERA of a substance with probabilistic approaches, such as Bayesian networks.** HC5: Concentration of a chemical hazardous to 5% of species; AF: Assessment Factor; PF: Precautionary Factor. Adapted from Mentzel *et al.*, 2021, with permission.



Furthermore, integrating risk mitigation options into ERAs, i.e., a solution-focused approach has been introduced to improve the utility of ERAs and to ensure that adequate risk management decisions are taken (Munthe *et al.*, 2019). The BN models to be developed for risk characterisation within ECORISK2050 will be extended to incorporate such alternative decisions and their effectiveness (Carriger & Newman, 2012), and thereby function as decision-supporting tools.

The research aims of this WP are:

- Develop and apply a probabilistic model for risk assessment of agricultural chemicals under current and future GC scenarios.
- Apply probabilistic models for assessment of PPCP from wastewater emissions under current and future GC scenarios.
- Assess the effectiveness of different mitigation options to improve future wastewater quality.

#### **ESR 11: Probabilistic risk assessment of pesticides and their mixtures under global change scenarios**

Within the EU, ERA of pesticides is conducted on individual products using a framework of tiers of increasing specificity and decreasing conservatism. If an overestimate of environmental concentrations, for instance, produces a value far below levels at which a chemical is predicted to cause adverse effects, then typically no further assessment is needed for the substance to be authorised (EFSA, 2013).

The traditional approach, conducted on a substance-by-substance basis using surrogate species under regulatory frameworks, is considered protective for all species. Probabilistic ERA can be used to move to a more holistic approach in ERA and overcome some of the shortcomings of today's prospective and retrospective frameworks, as they lack consideration of real spatial and temporal exposure, and widely exclude the assessment of multiple chemical (mixture) exposure as well as other factors that influence the exposure to or effects of these chemicals (Topping *et al.*, 2020).

While current probabilistic approaches use the probability distribution to extract a single number to enter into the risk quotient (Posthuma *et al.*, 2019), less attention is paid to risk uncertainty intervals or the visualisation of risk (Verdonck *et al.*, 2003). This project will use BNs that can overcome these limitations by simultaneously integrating multiple assessment endpoints, multiple stressors, and permitting the better consideration of mixtures' risks to the environment. BNs offer further flexibility in data sources (Chen & Pollino, 2012), incorporating direct measurements or output from models (Pitchforth & Mengersen, 2013) even where empirical data are absent, using expert opinions to establish baseline information and establish the probability and magnitude of environmental and anthropogenic effects (Stelzenmüller *et al.*, 2018). The flexibility of BNs means that they can be a useful tool to assess the risks of pesticides to the environment, by incorporating

probability distributions in the model to derive risk estimate distributions. They can also be developed towards risk assessment of pesticide mixtures, by incorporating mathematical methods currently in use and distributions for both the effect and exposure parts. Additionally, the BN model can be used to combine the output of pesticide prediction models (e.g., WISPE) that account for future climate projections, crops scenarios, and pesticide exposure models, with risk estimation calculations that predict ecological risk of pesticides under future conditions, while also integrating the uncertainties quantified as probability distributions at each step.

#### **ESR 12: Probabilistic risk assessment of pharmaceuticals in the freshwater environment**

The regulation of pharmaceuticals in Europe has long been driven by medical needs, leaving environmental risk assessment a largely descriptive measure, based on the comparison of lab-extrapolated effect thresholds and concentrations predicted from market penetration and dose sizes (EMA, 2018). As demographic and climatic shifts drive intensifying and diversifying stressors in the aquatic environment, the importance of effective and comprehensive risk assessment approaches that adequately account for future uncertainty can only grow.

Predicting environmental concentrations from pharmaceutical sales data remains a potential alternate approach, where data are available (Grung *et al.*, 2008). In Norway, the Norwegian Institute of Public Health collects spatially and temporally categorised data, allowing predicted concentrations to be informed by real-world variation in use. By comparing conventional predicted concentrations to sales-based predictions and measured concentrations, we can better quantify uncertainty in the emission-to-toxicity pathway. Furthermore, through explicit modelling of these pathways, we can also consider uncertainty in persistence of pollutants as part of the overall risk profile, rather than employing a simple numerical cut-off point.

In the ESR 12 project, we will develop a probabilistic model integrating these pathways, their uncertainty, and the overall risk assessment process within a Norwegian setting, following the Bayesian network risk assessment approach described for ESR 11. It is then planned that a more integrated risk assessment framework can be developed (Sperotto *et al.*, 2017), allowing for better modelling and communication of the relationships between urbanisation and demographic changes, pharmaceutical pollution, and environmental changes. This approach can be used to deliver a risk-based prioritisation list of pharmaceutical pollutants in Norway as well as in other European countries.

#### **ESR 13: Mitigation options to reach a toxic-free environment**

It is evident that effective mitigation options are needed to reduce chemical emissions into the environment. Currently, the main focus is on wastewater treatment to remove chemicals. However, considering the limits of technological treatments, other options are urgently needed (Kümmerer *et al.*, 2018; van Wezel *et al.*, 2017). Within ECORISK2050, options covering the design, authorisation, use and waste stage of chemicals will be assessed.

During the chemical design, the concept of ‘green chemistry’ can be applied to develop less hazardous chemicals with increased biodegradability, whilst their initial function is maintained. Recently, [Keijer \*et al.\* \(2019\)](#) proposed a framework for ‘circular chemistry’, by expanding the principles of green chemistry to the entire life cycle of chemical products and considering by-products as a resource instead of waste. Implemented correctly, circular chemistry would not only minimise chemical risks but could also support the European strategy for a circular economy, among others.

Authorisation of chemicals in the EU is managed through different legislative frameworks which are organised per market type ([van Dijk \*et al.\*, 2021](#)). Within these frameworks, an ERA for the aquatic environment needs to be submitted as part of the chemical registration requirements. Risk assessment outcomes are used to manage substances prior to placement on the market through classification, labelling, restrictions, or outright bans on usage of chemicals. Current risk assessments need to be adjusted as assessments are ill-equipped to deal with important environmental and economic phenomena including mixture toxicity, other chemical uses than those assessed, and regrettable substitution, where banned substances are replaced with new, potentially more harmful chemicals. Furthermore, as a given substance can be regulated under multiple legislative frameworks and environmental risk assessment procedures between frameworks differ, there is potential for inconsistency among marketing authorisation for chemicals.

Chemicals are used both professionally — for instance, pesticides in agricultural practices, pharmaceuticals in hospitals — and non-professionally, like biocides in household

products. Mandatory mitigation options are only available for professional users. Environmental risks of chemicals are currently underestimated due to unregulated emissions from non-professional use ([Wieck \*et al.\*, 2018](#)), highlighting the importance of the sustainable use of chemicals by non-professional users, too. Reduced and sustainable use of chemicals can be achieved by applying the principles of ‘essential use’ to phase out certain applications ([Cousins \*et al.\*, 2019](#)).

Lastly, technological treatment options of wastewater will be assessed, as these will remain indispensable since chemical emissions to the environment cannot always be prevented. The ECORISK2050 project will seek to determine an appropriate combination of mitigation options across the whole chemical life cycle, to close the gap to a toxic-free environment.

### Results and dissemination

The ECORISK2050 project has, and continues to actively develop contacts with the wider public and scientific community. At time of writing, the ESRs and supervisors on this project have produced a number of papers and deliverables, and organised several events:

- Eight journal articles have been lead-authored by ESRs across a number of relevant journals ([Table 3](#)).
- Seventeen Massive Open Online Courses (MOOCs) have been produced, recorded and made publicly available via ECORISK 2050’s website ([Table 4](#)).
- Various poster and platform presentations have been given by ESRs at international conferences including the

**Table 3. Summary of papers published as of April 2022 by ECORISK2050 Early Stage Researchers.**

ESR(s)	Journal articles
13	van Dijk, J., Flerlage, H., Beijer, S., Slootweg, J. C., & van Wezel, A. P. (2022). Safe and sustainable by design: A computer-based approach to redesign chemicals for reduced environmental hazards. <i>Chemosphere</i> , 134050.
8, 9, 7, 10	Polazzo, F., Roth, S.K., Hermann, M., Mangold-Döring, A., Rico, A., Sobek, A., Van den Brink, P.J. and Jackson, M.C. (2021). Combined effects of heatwaves and micropollutants on freshwater ecosystems: towards an integrated assessment of extreme events in multiple stressors research. <i>Global Change Biology</i> .
8	Polazzo, F., dos Anjos, T. B. O., Arenas-Sánchez, A., Romo, S., Vighi, M., & Rico, A. (2021). Effect of multiple agricultural stressors on freshwater ecosystems: The role of community structure, trophic status, and biodiversity-functioning relationships on ecosystem responses. <i>Science of The Total Environment</i> , 151052.
11	Mentzel S, Grung M, Tollefsen KE, Stenrød M, Petersen K, Moe SJ. Development of a Bayesian network for probabilistic risk assessment of pesticides. <i>Integr Environ Assess Manag</i> . 2021 Oct 7. doi: 10.1002/ieam.4533. Epub ahead of print. PMID: 34618406.
8	Polazzo, F., & Rico, A. (2021). Effects of multiple stressors on the dimensionality of ecological stability. <i>Ecology Letters</i> .
13	van Dijk, J., Leopold, A., Flerlage, H., van Wezel, A., Seiler, T. B., Enrici, M. H., & Bloor, M. C. (2021). The EU Green Deal’s ambition for a toxic-free environment: filling the gap for science-based policymaking. <i>Integrated Environmental Assessment and Management</i> .
13	van Dijk, J., Gustavsson, M., Dekker, S.C., van Wezel, A.P. (2021). Towards ‘one substance – one assessment’: An analysis of EU chemical registration and aquatic risk assessment frameworks. <i>Journal of Environmental Management</i> , 280, 111692.
8	Polazzo F., Marina T.I., Crettaz-Minaglia M., Rico A. (2022). Food web rewiring drives long-term compositional differences and late-disturbance interactions at the community level. <i>Proceedings of the National Academy of Sciences</i> , ;119(17): e2117364119.

**Table 4. 17 Massive Open Online Courses hosted and made publicly available by ECORISK 2050.**

Name	Presenters	Date
Towards Sustainable Environmental Quality: Some Lessons Learned from the Global Horizon Scanning Project	Bryan W. Brooks, Baylor University	June 2019
Application of Mathematical Modelling Languages and Statistical Optimisation Methods in Physiologically Based Toxicokinetic (PBTK) to Quantitative Adverse Outcome Pathway (qAOP) Models	Ian Edlund, Clemson University	September 2019
Ecological Economics Perspectives: Large Scale Challenges to Climate and Environment	Thomas Hahn, Stockholm Resilience Centre	September 2019
'The Anthropocene', Planetary Boundaries and Social-Ecological Resilience	Sarah Cornell, Stockholm Resilience Centre	September 2019
Plastic Debris in Rivers	Tim van Emmerik, Wageningen University	October 2019
An Insight in to Visual Communication for Scientists	Melissa Goma, IPCC	November 2019
Integrating Decision Analysis and Causal Modelling with Ecological Risk Assessments	John Carriger, US EPA	May 2020
Master Your Uncertainty when Assessing Risk	Ullrika Sahlin, Lund University	June 2020
Dynamic Models for the Prediction of Chemical Fate in the Environment	Antonio Di Guardo, University of Insubria	September 2020
Developing Integrated Scenarios with an Application to Chemical Solution	Kasper Kok, Wageningen University	September 2020
Improving the Use of Science to Inform Environmental Policy and Decision Making	Valery Forbes, University of Minnesota	October 2020
A Deadly Combination in a Changing World: Pesticide Toxicity and Global Warming	Julie Verheyen, KU Leuven	November 2020
The EU Chemicals Strategy for Sustainability	Antonio Franco, Joint Research Centre	December 2020
State of Practice for Ecological Risk Assessment – What We Can Do – But Don't!	Anne Fairbrother, Exponent	December 2020
Toxicological Trade Barriers: Governing Chemicals at the OECD	Colleen Lanier Christensen, Harvard University	March 2021
Panel Discussion on Safe and Responsible Reuse of Waste Water Resources	Annemarie van Wezel, University of Amsterdam Benny Chefetz, Hebrew University of Jerusalem Anders Finnson, Swedish Water Marlene Ågerstrand, Stockholm University	May 2021
Application of Ecological Risk Assessment in the Era of Climate Change	Wayne Landis, Western Washington University	May 2021

Society for Environmental Toxicology and Chemistry and European Geosciences Union's annual meetings.

- Non peer-reviewed ECORISK 2050 project deliverables produced by ESRs have, in some cases, been made publicly available via the website.

We further plan, before the conclusion of the project in April 2023, to:

- Disseminate results to partners and beneficiaries at a concluding workshop to be held in October 2022
- Produce policy briefs for government agencies, regional authorities and other public bodies involved in policy-making such as the European Commission, ECHA, EFSA, EMA, JRC, EEA and OECD, as well as for

National authorities in the countries of the participating organisations.

- Produce advice notes for companies outlining the results produced and the key issues that companies should consider.
- Provide information to the public through articles and features for popular science magazines in each country.
- Provide information to school pupils through open days and ESR participation in the school liaison activities of their host institutions.

We continue to update our website, and the Twitter account @EcoITN is used as the main channel to publish updates about ongoing and finished work of the ESRs, conferences and group

meetings. ECORISK2050 is coordinated by Paul J van den Brink ([paul.vandenbrink@wur.nl](mailto:paul.vandenbrink@wur.nl)).

## Abbreviations

ESR = early stage researcher, GC = global change, IPCC = Intergovernmental Panel on Climate Change, RCP = representative concentration pathway, SSP = shared socio-economic

pathway, PPCP = pharmaceuticals and personal care products, WP = work package, TKTD = toxicokinetic-toxicodynamic, GCC = global climate change, ERA = environmental risk assessment, MOOC = Massive Open Online Course

## Data availability

No data are associated with this article.

## References

- Acosta-González A, Marqués S: **Bacterial diversity in oil-polluted marine coastal sediments.** *Curr Opin Biotechnol.* 2016; **38**: 24–32.  
[PubMed Abstract](#) | [Publisher Full Text](#)
- Ågerstrand M, Beronius A: **Weight of evidence evaluation and systematic review in EU chemical risk assessment: Foundation is laid but guidance is needed.** *Environ Int.* 2016; **92-93**: 590–596.  
[PubMed Abstract](#) | [Publisher Full Text](#)
- Andersen T, Pedersen O, Andersen FØ: **Nutrient concentrations in a *Littorella uniflora* community at higher CO<sub>2</sub> concentrations and reduced light intensities.** *Freshwater Biol.* 2005; **50**(7): 1178–1189.  
[Publisher Full Text](#)
- Andreozzi R, Caprio V, Ciniglia C, et al.: **Antibiotics in the environment: Occurrence in Italian STPs, fate, and preliminary assessment on algal toxicity of amoxicillin.** *Environ Sci Technol.* 2004; **38**(24): 6832–6838.  
[PubMed Abstract](#) | [Publisher Full Text](#)
- Arenas-Sánchez A, López-Heras I, Nozal L, et al.: **Effects of increased temperature, drought, and an insecticide on freshwater zooplankton communities.** *Environ Toxicol Chem.* 2019; **38**(2): 396–411.  
[PubMed Abstract](#) | [Publisher Full Text](#)
- Arnot JA, Brown TN, Wania F, et al.: **Prioritizing chemicals and data requirements for screening-level exposure and risk assessment.** *Environ Health Perspect.* 2012; **120**(11): 1565–1570.  
[PubMed Abstract](#) | [Publisher Full Text](#) | [Free Full Text](#)
- Bai X, Lutz A, Carroll R, et al.: **Occurrence, distribution, and seasonality of emerging contaminants in urban watersheds.** *Chemosphere.* 2018; **200**: 133–142.  
[PubMed Abstract](#) | [Publisher Full Text](#) | [Free Full Text](#)
- Balbus JM, Boxall AB, Fenske RA, et al.: **Implications of global climate change for the assessment and management of human health risks of chemicals in the natural environment.** *Environ Toxicol Chem.* 2013; **32**(1): 62–78.  
[PubMed Abstract](#) | [Publisher Full Text](#) | [Free Full Text](#)
- Beketov MA, Liess M: **Potential of 11 Pesticides to Initiate Downstream Drift of Stream Macroinvertebrates.** *Arch Environ Contam Toxicol.* 2008; **55**(2): 247–253.  
[PubMed Abstract](#) | [Publisher Full Text](#)
- Ben Mordechay E, Tarchitzky J, Chen Y, et al.: **Composted biosolids and treated wastewater as sources of pharmaceuticals and personal care products for plant uptake: A case study with carbamazepine.** *Environ Pollut.* 2018; **232**: 164–172.  
[PubMed Abstract](#) | [Publisher Full Text](#)
- Bixio D, Thoeve C, De Koning J, et al.: **Wastewater reuse in Europe.** *Desalination.* 2006; **187**(1–3): 89–101.  
[Publisher Full Text](#)
- Bloomfield JP, Williams RJ, Goody DC, et al.: **Impacts of climate change on the fate and behaviour of pesticides in surface and groundwater—A UK perspective.** *Sci Total Environ.* 2006; **369**(1–3): 163–177.  
[PubMed Abstract](#) | [Publisher Full Text](#)
- Boxall AB, Hardy A, Beulke S, et al.: **Impacts of climate change on indirect human exposure to pathogens and chemicals from agriculture.** *Environ Health Perspect.* 2009; **117**(4): 508–514.  
[PubMed Abstract](#) | [Publisher Full Text](#) | [Free Full Text](#)
- Bracewell S, Verdonschot RCM, Schäfer RB, et al.: **Qualifying the effects of single and multiple stressors on the food web structure of Dutch drainage ditches using a literature review and conceptual models.** *Sci Total Environ.* 2019; **684**: 727–740.  
[PubMed Abstract](#) | [Publisher Full Text](#)
- Brack W, Altenburger R, Schüürmann G, et al.: **The SOLUTIONS project: Challenges and responses for present and future emerging pollutants in land and water resources management.** *Sci Total Environ.* 2015; **503-504**: 22–31.  
[PubMed Abstract](#) | [Publisher Full Text](#)
- Brooks BW: **Greening chemistry and ecotoxicology towards sustainable environmental quality.** *Green Chem.* 2019; **21**(10): 2575–2582.  
[Publisher Full Text](#)
- Bunke D, Moritz S, Brack W, et al.: **Developments in society and implications for emerging pollutants in the aquatic environment.** *Environ Sci Eur.* 2019; **31**: 32.  
[Publisher Full Text](#)
- Cairns JJ, Buikema ALJ, Heath AG, et al.: **Effects of temperature on aquatic organism sensitivity to selected chemicals.** Water Resources Research Center, Virginia Polytechnic Institute and State University. 1978.  
[Reference Source](#)
- Camboni M, Hanlon J, Pérez-García R, et al.: **A state of play study of the market for so called “next generation” nanomaterials.** *European Chemicals Agency.* 2019.  
[Publisher Full Text](#)
- Carlsson P, Breivik K, Brorström-Lundén E, et al.: **Polychlorinated biphenyls (PCBs) as sentinels for the elucidation of Arctic environmental change processes: a comprehensive review combined with ArcRisk project results.** *Environ Sci Pollut Res Int.* 2018; **25**(23): 22499–22528.  
[PubMed Abstract](#) | [Publisher Full Text](#) | [Free Full Text](#)
- Carriger JF, Newman MC: **Influence diagrams as decision-making tools for pesticide risk management.** *Integr Environ Assess Manag.* 2012; **8**(2): 339–350.  
[PubMed Abstract](#) | [Publisher Full Text](#)
- Carter LJ, Chefetz B, Abdeen Z, et al.: **Emerging investigator series: Towards a framework for establishing the impacts of pharmaceuticals in wastewater irrigation systems on agro-ecosystems and human health.** *Environ Sci Process Impacts.* 2019; **21**(4): 605–622.  
[PubMed Abstract](#) | [Publisher Full Text](#)
- Chapman PM: **Negatives and Positives: Contaminants and Other Stressors in Aquatic Ecosystems.** *Bull Environ Contam Toxicol.* 2018; **100**(1): 3–7.  
[PubMed Abstract](#) | [Publisher Full Text](#)
- Chen SH, Pollino CA: **Good practice in Bayesian network modelling.** *Environ Modell Softw.* 2012; **37**: 134–145.  
[Publisher Full Text](#)
- Christensen MR, Graham MD, Vinebrooke RD, et al.: **Multiple anthropogenic stressors cause ecological surprises in boreal lakes.** *Glob Change Biol.* 2006; **12**(12): 2316–2322.  
[Publisher Full Text](#)
- Cousins IT, Goldenman G, Herzke D, et al.: **The concept of essential use for determining when uses of PFASs can be phased out.** *Environ Sci Process Impacts.* 2019; **21**(11): 1803–1815.  
[PubMed Abstract](#) | [Publisher Full Text](#) | [Free Full Text](#)
- Czub G, McLachlan MS: **A food chain model to predict the levels of lipophilic organic contaminants in humans.** *Environ Toxicol Chem.* 2004; **23**(10): 2356–2366.  
[PubMed Abstract](#) | [Publisher Full Text](#)
- De Laender F, van den Brink PJ, Janssen CR, et al.: **The ChimERA project: coupling mechanistic exposure and effect models into an integrated platform for ecological risk assessment.** *Environ Sci Pollut Res Int.* 2014; **21**(9): 6263–6267.  
[PubMed Abstract](#) | [Publisher Full Text](#)
- Deutsch CA, Tewksbury JJ, Tigchelaar M, et al.: **Increase in crop losses to insect pests in a warming climate.** *Science.* 2018; **361**(6405): 916–919.  
[PubMed Abstract](#) | [Publisher Full Text](#)
- Di Guardo A, Gouin T, MacLeod M, et al.: **Environmental fate and exposure models: advances and challenges in 21<sup>st</sup> century chemical risk assessment.** *Environ Sci Process Impacts.* 2018; **20**(1): 58–71.  
[PubMed Abstract](#) | [Publisher Full Text](#)
- Donat MG, Alexander LV: **The shifting probability distribution of global daytime and night-time temperatures.** *Geophys Res Lett.* 2012; **39**(14).  
[Publisher Full Text](#)
- Donohue I, Petchey OL, Montoya JM, et al.: **On the dimensionality of ecological stability.** *Ecol Lett.* 2013; **16**(4): 421–429.  
[PubMed Abstract](#) | [Publisher Full Text](#)



- Douziech M, van Zelm R, Oldenkamp R, *et al.*: **Estimation of chemical emissions from down-the-drain consumer products using consumer survey data at a country and wastewater treatment plant level.** *Chemosphere*. 2018; **193**: 32–41.  
[PubMed Abstract](#) | [Publisher Full Text](#)
- EEA: **Assessment of global megatrends — 2014 update.** European Environmental Agency, Luxembourg, 2015.
- EFSA: **Use of the EFSA Comprehensive European Food Consumption Database in Exposure Assessment.** *EFSA Journal*. 2011; **9**(3): 2097.  
[Publisher Full Text](#)
- EFSA: **Guidance on tiered risk assessment for plant protection products for aquatic organisms in edge-of-field surface waters.** *EFSA Journal*. 2013; **11**(7): 3290.  
[Publisher Full Text](#)
- Eitzinger J, Trnka M, Semerádová D, *et al.*: **Regional climate change impacts on agricultural crop production in Central and Eastern Europe - hotspots, regional differences and common trends.** *J Agr Sci*. 2013; **151**(6): 787–812.  
[Publisher Full Text](#)
- EMA: **Revised guideline to assess risk of human medicines for the environment.** European Medicines Agency, 2018.  
[Reference Source](#)
- EPA: **Ecological Risk Assessment.** In: US EPA. 2014; Accessed 25 Feb 2021.
- Escher BI, Eggen RIL, Schreiber U, *et al.*: **Baseline Toxicity (Narcosis) of Organic Chemicals Determined by In Vitro Membrane Potential Measurements in Energy-Transducing Membranes.** *Environ Sci Technol*. 2002; **36**(9): 1971–1979.  
[PubMed Abstract](#) | [Publisher Full Text](#)
- Escher BI, Hermens JLM: **Modes of Action in Ecotoxicology: Their Role in Body Burdens, Species Sensitivity, QSARs, and Mixture Effects.** *Environ Sci Technol*. 2002; **36**(20): 4201–4217.  
[PubMed Abstract](#) | [Publisher Full Text](#)
- Fairman R, Mead CD, Williams WP: **Environmental Risk Assessment - Approaches, Experiences and Information Sources.** European Environment Agency, 1998.  
[Reference Source](#)
- Falkowski PG, Fenchel T, Delong EF: **The Microbial Engines That Drive Earth's Biogeochemical Cycles.** *Science*. 2008; **320**(5879): 1034–1039.  
[PubMed Abstract](#) | [Publisher Full Text](#)
- FAO: **The future of food and agriculture - Alternative pathways to 2050.** Food and Agriculture Organisation, Rome, 2018.  
[Reference Source](#)
- FAO: **Plant Pests and diseases in the context of climate change and climate variability, food security and biodiversity risks (September).** FAO European commission on agriculture (2019)., Budapest, Hungary, 2019.
- Franco A, Ferranti A, Davidsen C, *et al.*: **An unexpected challenge: ionizable compounds in the REACH chemical space.** *Int J Life Cycle Assess*. 2010; **15**: 321–325.  
[Publisher Full Text](#)
- Fu Q, Malchi T, Carter LJ, *et al.*: **Pharmaceutical and Personal Care Products: From Wastewater Treatment into Agro-Food Systems.** *Environ Sci Technol*. 2019; **53**(24): 14083–14090.  
[PubMed Abstract](#) | [Publisher Full Text](#)
- Girotti S, Ferri EN, Fumo MG, *et al.*: **Monitoring of environmental pollutants by bioluminescent bacteria.** *Anal Chim Acta*. 2008; **608**(1): 2–29.  
[PubMed Abstract](#) | [Publisher Full Text](#)
- Gobas FAPC, Mayer P, Parkerton TF, *et al.*: **A chemical activity approach to exposure and risk assessment of chemicals: Focus articles are part of a regular series intended to sharpen understanding of current and emerging topics of interest to the scientific community.** *Environ Toxicol Chem*. 2018; **37**(5): 1235–1251.  
[PubMed Abstract](#) | [Publisher Full Text](#) | [Free Full Text](#)
- Goldstein M, Shenker M, Chefetz B: **Insights into the uptake processes of wastewater-borne pharmaceuticals by vegetables.** *Environ Sci Technol*. 2014; **48**(10): 5593–5600.  
[PubMed Abstract](#) | [Publisher Full Text](#)
- Gouin T, Armitage JM, Cousins IT, *et al.*: **Influence of global climate change on chemical fate and bioaccumulation: The role of multimedia models.** *Environ Toxicol Chem*. 2013; **32**(1): 20–31.  
[PubMed Abstract](#) | [Publisher Full Text](#) | [Free Full Text](#)
- Grill G, Khan U, Lehner B, *et al.*: **Risk assessment of down-the-drain chemicals at large spatial scales: Model development and application to contaminants originating from urban areas in the Saint Lawrence River Basin.** *Sci Total Environ*. 2016; **541**: 825–838.  
[PubMed Abstract](#) | [Publisher Full Text](#)
- Grossberger A, Hadar Y, Borch T, *et al.*: **Biodegradability of pharmaceutical compounds in agricultural soils irrigated with treated wastewater.** *Environ Pollut*. 2014; **185**: 168–177.  
[PubMed Abstract](#) | [Publisher Full Text](#)
- Grung M, Källqvist T, Sakshaug S, *et al.*: **Environmental assessment of Norwegian priority pharmaceuticals based on the EMEA guideline.** *Ecotoxicol Environ Saf*. 2008; **71**(2): 328–340.  
[PubMed Abstract](#) | [Publisher Full Text](#)
- Hart BT, Pollino CA: **Increased Use of Bayesian Network Models Will Improve Ecological Risk Assessments.** *Hum Ecol Risk Assess*. 2008; **14**(5): 851–853.  
[Publisher Full Text](#)
- Harwood AD, You J, Lydy MJ: **Temperature as a toxicity identification evaluation tool for pyrethroid insecticides: Toxicokinetic confirmation.** *Environ Toxicol Chem*. 2009; **28**(5): 1051–1058.  
[PubMed Abstract](#) | [Publisher Full Text](#)
- Hasler CT, Jeffrey JD, Schneider EVC, *et al.*: **Biological consequences of weak acidification caused by elevated carbon dioxide in freshwater ecosystems.** *Hydrobiologia*. 2018; **806**: 1–12.  
[Publisher Full Text](#)
- Hoegh-Guldberg O, Jacob D, Taylor M, *et al.*: **Impacts of 1.5°C of Global Warming on Natural and Human Systems.** IPCC, 2018.  
[Reference Source](#)
- Hoekstra AY, Mekonnen MM: **The water footprint of humanity.** *Proc Natl Acad Sci U S A*. 2012; **109**(9): 3232–3237.  
[PubMed Abstract](#) | [Publisher Full Text](#) | [Free Full Text](#)
- Holmstrup M, Bindsø AM, Oostingh GJ, *et al.*: **Interactions between effects of environmental chemicals and natural stressors: A review.** *Sci Total Environ*. 2010; **408**(18): 3746–3762.  
[PubMed Abstract](#) | [Publisher Full Text](#)
- Hooper MJ, Ankley GT, Cristol DA, *et al.*: **Interactions between chemical and climate stressors: A role for mechanistic toxicology in assessing climate change risks.** *Environ Toxicol Chem*. 2013; **32**(1): 32–48.  
[PubMed Abstract](#) | [Publisher Full Text](#) | [Free Full Text](#)
- Jackson MC, Loewen CJG, Vinebrooke RD, *et al.*: **Net effects of multiple stressors in freshwater ecosystems: A meta-analysis.** *Glob Chang Biol*. 2016; **22**(1): 180–189.  
[PubMed Abstract](#) | [Publisher Full Text](#)
- Jager T, Vermeire TG, Rikken MG, *et al.*: **Opportunities for a probabilistic risk assessment of chemicals in the European Union.** *Chemosphere*. 2001; **43**(2): 257–264.  
[PubMed Abstract](#) | [Publisher Full Text](#)
- Jess S, Kildea S, Moody A, *et al.*: **European Union policy on pesticides: implications for agriculture in Ireland.** *Pest Manag Sci*. 2014; **70**(11): 1646–1654.  
[PubMed Abstract](#) | [Publisher Full Text](#)
- Jiménez Cisneros B, Oki T, Arnell N, *et al.*: **Freshwater resources.** In: *Climate Change 2014: Impacts, Adaptation, and Vulnerability. Part A: Global and Sectoral Aspects. Contribution of Working Group II to the Fifth Assessment Report of the Intergovernmental Panel on Climate Change.* IPCC, 2014; 229–269.  
[Reference Source](#)
- Kaikkonen L, Parviainen T, Rahikainen M, *et al.*: **Bayesian Networks in Environmental Risk Assessment: A Review.** *Integr Environ Assess Manag*. 2021; **17**(1): 62–78.  
[PubMed Abstract](#) | [Publisher Full Text](#) | [Free Full Text](#)
- Keijer T, Bakker V, Slootweg JC: **Circular chemistry to enable a circular economy.** *Nat Chem*. 2019; **11**(3): 190–195.  
[PubMed Abstract](#) | [Publisher Full Text](#)
- Kocmánková E, Trnka M, Juroch J, *et al.*: **Impact of climate change on the occurrence and activity of harmful organisms.** *Plant Protect Sci*. 2009; **45**: S48–S52.  
[Publisher Full Text](#)
- Kong D, MacLeod M, Cousins IT: **Modelling the influence of climate change on the chemical concentrations in the Baltic Sea region with the POPCYCLING-Baltic model.** *Chemosphere*. 2014; **110**: 31–40.  
[PubMed Abstract](#) | [Publisher Full Text](#)
- Kriegler E, O'Neill BC, Hallegatte S, *et al.*: **The need for and use of socio-economic scenarios for climate change analysis: A new approach based on shared socio-economic pathways.** *Glob Environ Change*. 2012; **22**(4): 807–822.  
[Publisher Full Text](#)
- Kümmerer K, Dionysiou DD, Olsson O, *et al.*: **A path to clean water.** *Science*. 2018; **361**(6399): 222–224.  
[PubMed Abstract](#) | [Publisher Full Text](#)
- Lamichhane JR, Dachbrodt-Saaydeh S, Kudsk P, *et al.*: **Toward a Reduced Reliance on Conventional Pesticides in European Agriculture.** *Plant Dis*. 2016; **100**(1): 10–24.  
[PubMed Abstract](#) | [Publisher Full Text](#)
- Lamon L, Dalla Valle M, Critto A, *et al.*: **Introducing an integrated climate change perspective in POPs modelling, monitoring and regulation.** *Environ Pollut*. 2009; **157**(7): 1971–1980.  
[PubMed Abstract](#) | [Publisher Full Text](#)
- Li R, Jin J: **Modeling of temporal patterns and sources of atmospherically transported and deposited pesticides in ecosystems of concern: A case study of toxaphene in the Great Lakes.** *J Geophys Res Atmos*. 2013; **118**(20): 11863–11874.  
[Publisher Full Text](#)
- Li YF, Venkatesh S, Li D: **Modeling global emissions and residues of pesticides.** *Environ Model Assess*. 2005; **9**: 237–243.  
[Publisher Full Text](#)
- Martínez-Bravo MM, Martínez-del-Río J, Antolín-López R: **Trade-offs among urban sustainability, pollution and livability in European cities.** *J Clean Prod*.

- 2019; **224**: 651–660.  
[Publisher Full Text](#)
- Masson-Delmotte V, Zhai P, Pirani A, *et al.*: **Climate Change 2021: The Physical Science Basis**. Contribution of Working Group I to the Sixth Assessment Report of the Intergovernmental Panel on Climate Change. Cambridge University Press; 2021.
- Mateo-Sagasta J, Zadeh SM, Turrall, H: **More people, more food, worse water?: a global review of water pollution from agriculture**. FAO, Rome, 2018.  
[Reference Source](#)
- Meehl GA, Tebaldi C: **More Intense, More Frequent, and Longer Lasting Heat Waves in the 21st Century**. *Science*. 2004; **305**(5686): 994–997.  
[PubMed Abstract](#) | [Publisher Full Text](#)
- Mentzel S, Grung M, Tollefsen KE, *et al.*: **Development of a Bayesian network for probabilistic risk assessment of pesticides**. *Integr Environ Assess Manag*. 2021.  
[PubMed Abstract](#) | [Publisher Full Text](#)
- Milan M, Carraro L, Fariselli P, *et al.*: **Microbiota and environmental stress: how pollution affects microbial communities in Manila clams**. *Aquat Toxicol*. 2018; **194**: 195–207.  
[PubMed Abstract](#) | [Publisher Full Text](#)
- Moe SJ, De Schampelaere K, Clements WH, *et al.*: **Combined and interactive effects of global climate change and toxicants on populations and communities**. *Environ Toxicol Chem*. 2013; **32**(1): 49–61.  
[PubMed Abstract](#) | [Publisher Full Text](#) | [Free Full Text](#)
- Montalvão MF, Chagas TQ, da Silva Alvarez TG, *et al.*: **How leachates from wasted cigarette butts influence aquatic life? A case study on freshwater mussel *Anodonta trapesialis***. *Sci Total Environ*. 2019; **689**: 381–389.  
[PubMed Abstract](#) | [Publisher Full Text](#)
- Munthe J, Lexén J, Skårman T, *et al.*: **Increase coherence, cooperation and cross-compliance of regulations on chemicals and water quality**. *Environ Sci Eur*. 2019; **31**: 64.  
[Publisher Full Text](#)
- Nizzetto L, Butterfield D, Futter M, *et al.*: **Assessment of contaminant fate in catchments using a novel integrated hydrobiogeochemical-multimedia fate model**. *Sci Total Environ*. 2016; **544**: 553–563.  
[PubMed Abstract](#) | [Publisher Full Text](#)
- Noacco V, Wagener T, Worrall F, *et al.*: **Human impact on long-term organic carbon export to rivers**. *J Geophys Res Biogeosci*. 2017; **122**(4): 947–965.  
[Publisher Full Text](#)
- Noyes PD, McElwee MK, Miller HD, *et al.*: **The toxicology of climate change: Environmental contaminants in a warming world**. *Environ Int*. 2009; **35**(6): 971–986.  
[PubMed Abstract](#) | [Publisher Full Text](#)
- Ockleford C, Adriaanse P, Beryn P, *et al.*: **Scientific Opinion on the state of the art of Toxicokinetic/Toxicodynamic (TKTD) effect models for regulatory risk assessment of pesticides for aquatic organisms**. *EFSA J*. 2018; **16**(8): e05377.  
[PubMed Abstract](#) | [Publisher Full Text](#) | [Free Full Text](#)
- Olesen JE, Trnka M, Kersebaum KC, *et al.*: **Impacts and adaptation of European crop production systems to climate change**. *Eur J Agron*. 2011; **34**(2): 96–112.  
[Publisher Full Text](#)
- O'Neill BC, Kriegler E, Riahi K, *et al.*: **A new scenario framework for climate change research: The concept of shared socioeconomic pathways**. *Clim Change*. 2014; **122**: 387–400.  
[Publisher Full Text](#)
- Paltiel O, Fedorova G, Tadmor G, *et al.*: **Human Exposure to Wastewater-Derived Pharmaceuticals in Fresh Produce: A Randomized Controlled Trial Focusing on Carbamazepine**. *Environ Sci Technol*. 2016; **50**(8): 4476–4482.  
[PubMed Abstract](#) | [Publisher Full Text](#)
- Paz A, Tadmor G, Malchi T, *et al.*: **Fate of carbamazepine, its metabolites, and lamotrigine in soils irrigated with reclaimed wastewater: Sorption, leaching and plant uptake**. *Chemosphere*. 2016; **160**: 22–29.  
[PubMed Abstract](#) | [Publisher Full Text](#)
- Petrie B, Barden R, Kasprzyk-Hordern B: **A review on emerging contaminants in wastewaters and the environment: Current knowledge, understudied areas and recommendations for future monitoring**. *Water Res*. 2015; **72**: 3–27.  
[PubMed Abstract](#) | [Publisher Full Text](#)
- Pilli-Sihvola K, van Oort B, Hanssen-Bauer I, *et al.*: **Communication and use of climate scenarios for climate change adaptation in Finland, Sweden and Norway**. *Local Environment*. 2015; **20**: 510–524.  
[Publisher Full Text](#)
- Pitchforth J, Mengersen K: **A proposed validation framework for expert elicited Bayesian Networks**. *Expert Syst Appl*. 2013; **40**(1): 162–167.  
[Publisher Full Text](#)
- Posthuma L, van Gils J, Zijp MC, *et al.*: **Species sensitivity distributions for use in environmental protection, assessment, and management of aquatic ecosystems for 12 386 chemicals**. *Environ Toxicol Chem*. 2019; **38**(4): 905–917.  
[PubMed Abstract](#) | [Publisher Full Text](#) | [Free Full Text](#)
- Rosenrater LD: **Representing and using scenarios for responding to climate change**. *WIREs Clim Chg*. 2010; **1**(2): 253–259.  
[Publisher Full Text](#)
- Ruth M, Franklin RS: **Livability for all? Conceptual limits and practical implications**. *Appl Geogr*. 2014; **49**: 18–23.  
[PubMed Abstract](#) | [Publisher Full Text](#) | [Free Full Text](#)
- Sandin L, Schmidt-Kloiber A, Svenning JC, *et al.*: **A trait-based approach to assess climate change sensitivity of freshwater invertebrates across Swedish ecoregions**. *Curr Zool*. 2014; **60**(2): 221–232.  
[Publisher Full Text](#)
- Sapkota AR: **Water reuse, food production and public health: Adopting transdisciplinary, systems-based approaches to achieve water and food security in a changing climate**. *Environ Res*. 2019; **171**: 576–580.  
[PubMed Abstract](#) | [Publisher Full Text](#)
- Schapira M, Manor O, Golan N, *et al.*: **Involuntary human exposure to carbamazepine: A cross-sectional study of correlates across the lifespan and dietary spectrum**. *Environ Int*. 2020; **143**: 105951.  
[PubMed Abstract](#) | [Publisher Full Text](#)
- Schneider C, Laizé CLR, Acreman MC, *et al.*: **How will climate change modify river flow regimes in Europe? *Hydro Earth Syst Sci***. 2013; **17**(1): 325–339.  
[Publisher Full Text](#)
- Sciaraffa R, Borghini A, Montuschi P, *et al.*: **Impact of air pollution on respiratory diseases in urban areas: a systematic review: Daniele Ignazio La Milia**. *Eur J Public Health*. 2017; **27**(suppl\_3): cxx189.117.  
[Publisher Full Text](#)
- Sperotto A, Molina JL, Torresan S, *et al.*: **Reviewing Bayesian Networks potentials for climate change impacts assessment and management: A multi-risk perspective**. *J Environ Manage*. 2017; **202**(Pt 1): 320–331.  
[PubMed Abstract](#) | [Publisher Full Text](#)
- Stelzenmüller V, Coll M, Mazaris AD, *et al.*: **A risk-based approach to cumulative effect assessments for marine management**. *Sci Total Environ*. 2018; **612**: 1132–1140.  
[PubMed Abstract](#) | [Publisher Full Text](#)
- Struijs J: **SimpleTreat 4.0: a model to predict the fate and emission of chemicals in wastewater treatment plants**. National Institute for Public Health and the Environment, The Netherlands, 2014.  
[Reference Source](#)
- Su C, Zhang H, Cridge C, *et al.*: **A review of multimedia transport and fate models for chemicals: Principles, features and applicability**. *Sci Total Environ*. 2019; **668**: 881–892.  
[PubMed Abstract](#) | [Publisher Full Text](#)
- Svobodová E, Trnka M, Dubrovský M, *et al.*: **Determination of areas with the most significant shift in persistence of pests in Europe under climate change**. *Pest Manag Sci*. 2014; **70**(5): 708–715.  
[PubMed Abstract](#) | [Publisher Full Text](#)
- Ternes TA, Bonerz M, Herrmann N, *et al.*: **Irrigation of treated wastewater in Braunschweig, Germany: An option to remove pharmaceuticals and musk fragrances**. *Chemosphere*. 2007; **66**(5): 894–904.  
[PubMed Abstract](#) | [Publisher Full Text](#)
- Tonnang HEZ, Hervé BDB, Biber-Freudenberger L, *et al.*: **Advances in crop insect modelling methods—Towards a whole system approach**. *Ecol Modell*. 2017; **354**: 88–103.  
[Publisher Full Text](#)
- Topping CJ, Aldrich A, Beryn P: **Overhaul environmental risk assessment for pesticides**. *Science*. 2020; **367**(6476): 360–363.  
[PubMed Abstract](#) | [Publisher Full Text](#)
- van den Berg SJP, Baveco H, Butler E, *et al.*: **Modeling the Sensitivity of Aquatic Macroinvertebrates to Chemicals Using Traits**. *Environ Sci Technol*. 2019; **53**(10): 6025–6034.  
[PubMed Abstract](#) | [Publisher Full Text](#) | [Free Full Text](#)
- van Dijk J, Gustavsson M, Dekker SC, *et al.*: **Towards 'one substance - one assessment': An analysis of EU chemical registration and aquatic risk assessment frameworks**. *J Environ Manage*. 2021; **280**: 111692.  
[PubMed Abstract](#) | [Publisher Full Text](#)
- van Vuuren DP, Bijl DL, Bogaart P, *et al.*: **Integrated scenarios to support analysis of the food-energy-water nexus**. *Nat Sustain*. 2019; **2**: 1132–1141.  
[Publisher Full Text](#)
- van Vuuren DP, Kok MTJ, Girod B, *et al.*: **Scenarios in Global Environmental Assessments: Key characteristics and lessons for future use**. *Glob Environ Change*. 2012; **22**: 884–895.  
[Publisher Full Text](#)
- van Wezel AP, Opperhuizen A: **Narcosis Due to Environmental Pollutants in Aquatic Organisms: Residue-Based Toxicity, Mechanisms, and Membrane Burdens**. *Crit Rev Toxicol*. 1995; **25**(3): 255–279.  
[PubMed Abstract](#) | [Publisher Full Text](#)
- van Wezel AP, ter Laak TL, Fischer A, *et al.*: **Mitigation options for chemicals of emerging concern in surface waters; operationalising solutions-focused risk assessment**. *Environ Sci: Water Res Technol*. 2017; **3**(3): 403–414.  
[Publisher Full Text](#)
- Vasseur DA, DeLong JP, Gilbert B, *et al.*: **Increased temperature variation poses a greater risk to species than climate warming**. *Proc Biol Sci*. 2014; **281**(1779): 20132612.  
[PubMed Abstract](#) | [Publisher Full Text](#) | [Free Full Text](#)
- Verdonck FA, Aldenberg T, Jaworska J, *et al.*: **Limitations of current risk characterization methods in probabilistic environmental risk assessment**.



*Environ Toxicol Chem.* 2003; **22**(9): 2209–2213.

[PubMed Abstract](#) | [Publisher Full Text](#)

Verheyen J, Stoks R: **Temperature variation makes an ectotherm more sensitive to global warming unless thermal evolution occurs.** *J Anim Ecol.* 2019; **88**(4): 624–636.

[PubMed Abstract](#) | [Publisher Full Text](#)

Wang Z, Walker GW, Muir DCG, *et al.*: **Toward a Global Understanding of Chemical Pollution: A First Comprehensive Analysis of National and Regional Chemical Inventories.** *Environ Sci Technol.* 2020; **54**(5): 2575–2584.

[PubMed Abstract](#) | [Publisher Full Text](#)

Webb R, Buratini J: **Global Challenges for the 21st Century: the Role and Strategy of the Agri-Food Sector.** *Anim Reprod.* 2016; **13**(3): 133–142.

[PubMed Abstract](#) | [Publisher Full Text](#)

Webb BW, Nobilis F: **Long-term changes in river temperature and the influence of climatic and hydrological factors.** *Hydrol Sci J.* 2007; **52**(1): 74–85.

[PubMed Abstract](#) | [Publisher Full Text](#)

Wieck S, Olsson O, Kümmerer K: **Not only biocidal products: Washing and cleaning agents and personal care products can act as further sources of biocidal active substances in wastewater.** *Environ Int.* 2018; **115**: 247–256.

[PubMed Abstract](#) | [Publisher Full Text](#)

Willming MM, Maul JD: **Direct and indirect toxicity of the fungicide**

**pyraclostrobin to *Hyalella azteca* and effects on leaf processing under realistic daily temperature regimes.** *Environ Pollut.* 2016; **211**: 435–442.

[PubMed Abstract](#) | [Publisher Full Text](#)

Willming MM, Qin G, Maul JD: **Effects of environmentally realistic daily temperature variation on pesticide toxicity to aquatic invertebrates.** *Environ Toxicol Chem.* 2013; **32**(12): 2738–2745.

[PubMed Abstract](#) | [Publisher Full Text](#)

Woolway RI, Jennings E, Shatwell T, *et al.*: **Lake heatwaves under climate change.** *Nature.* 2021; **589**(7842): 402–7.

[PubMed Abstract](#) | [Publisher Full Text](#)

Wöhrnschimmel H, MacLeod M, Hungerbühler K: **Emissions, fate and transport of persistent organic pollutants to the arctic in a changing global climate.** *Environ Sci Technol.* 2013; **47**(5): 2323–2330.

[PubMed Abstract](#) | [Publisher Full Text](#)

Wu X, Dodgen LK, Conkle JL, *et al.*: **Plant uptake of pharmaceutical and personal care products from recycled water and biosolids: A review.** *Sci Total Environ.* 2015; **536**: 655–666.

[PubMed Abstract](#) | [Publisher Full Text](#)

Yan Q, Xu Y, Yu Y, *et al.*: **Effects of pharmaceuticals on microbial communities and activity of soil enzymes in mesocosm-scale constructed wetlands.** *Chemosphere.* 2018; **212**: 245–253.

[PubMed Abstract](#) | [Publisher Full Text](#)

# Open Peer Review

Current Peer Review Status:  

---

## Version 2

Reviewer Report 07 June 2022

<https://doi.org/10.21956/openreseurope.16002.r29285>

© 2022 Hansen H. This is an open access peer review report distributed under the terms of the [Creative Commons Attribution License](#), which permits unrestricted use, distribution, and reproduction in any medium, provided the original work is properly cited.



### Hans-Christian Bruun Hansen

Department of Plant and Environmental Sciences, University of Copenhagen, Frederiksberg, Denmark

I think it is fine. It can be somewhat difficult for the reader to very clearly pinpoint what is the exactly new thing about the project compared with previous risk assessments. Personally, I think that the development is going faster than here anticipated and the chemicals we will deal with in the future probably may not be classical pesticides, pharmaceuticals and similar. We are seeing a dramatic food shift, the green transition will change the industry towards biological products, new soil amendments will appear, and so on. It could be interesting to have a stronger delineation of that and what are the chemicals that the future will deal with. So a last thing could be to revise the abstract so i) the novelty of the project is clearer, and ii) what are the novel chemicals and scenarios not known today that will be dealt with.

**Competing Interests:** No competing interests were disclosed.

**I confirm that I have read this submission and believe that I have an appropriate level of expertise to confirm that it is of an acceptable scientific standard.**

---

## Version 1

Reviewer Report 18 February 2022

<https://doi.org/10.21956/openreseurope.15410.r28241>

© 2022 Hansen H. This is an open access peer review report distributed under the terms of the [Creative Commons Attribution License](#), which permits unrestricted use, distribution, and reproduction in any medium, provided the original work is properly cited.

**Hans-Christian Bruun Hansen**

<sup>1</sup> Department of Plant and Environmental Sciences, University of Copenhagen, Frederiksberg, Denmark

<sup>2</sup> Department of Plant and Environmental Sciences, University of Copenhagen, Frederiksberg, Denmark

The paper describes the idea and objectives of an EU ITN training network called Ecorisk2050 with a focus on how global change affects the emission, fate, effects and risks of chemicals in aquatic ecosystems.

The paper provides a short background and formulation of the main objectives and anticipated results, and the project structure, and then runs through the work that each ESR has to do. A lot of focus on models and scenarios.

It is difficult to criticize or comment on the content - as it is. However, it is very generic and as a reader, I got lost in all the text and the lack of concrete content, directions or work. The work as it is outlined seems to require not just 13 ESRs, but hundreds of people - it is overwhelming. As I guess the project has been running since late 2019 or early 2020 there must be some concrete lines of thinking and results. And more graphics could be produced to help understand what are the novel parts. It should be possible to show figures or graphics where you have global stressors and then the major impacts you are investigating.

I couldn't clearly understand how climate effects on cropping patterns and crop migration in Europe affects agrochemicals dispersion and fate. The green transition agenda is moving fast - so where are all the "biologicals" and gene technologies used in biopesticide approaches? Cropping patterns are shifting fast as farmers have to use more leguminous protein-producing crops - this may have many consequences.

You may also help the reader on the model side. If you are not experienced with models, then you get lost here. So what are the conceptual approaches and the novelties that you introduce in order to be able to handle and model the global changes? Most of the agricultural contaminants have passed soil systems before they are seen in rivers, lakes or groundwater. Where are fate processes in soils as affected by climate (which ESRs) - must be one of the most critical points.

For urban environments flooding and flushes must be critical, but how is it included?

Another development that is running fast is the analytical capabilities - non-target approaches I guess will be the standard in 10 years. So talking about 2050 - how do we get the new analytical capabilities and data explosion included in risk assessment? So regulation may change substantially as the list of risk chemicals may grow exponentially.

The dissemination activities, the training activities and the collaboration between academia and industry needs more emphasis. When reading this paper how can the reader get insight, learn, get involved and be trained? And how will regulation and public authorities as well as other stakeholders get on board?

**In conclusion:**

An interesting topic and ITN - very relevant and set for a lot of interesting research. However, for the reader, it is difficult to get much concrete from the paper as it is too generic. I suggest you try to work with figures and graphics to communicate your ideas, and to include examples/boxed to make things concrete.

**Is the rationale for the Open Letter provided in sufficient detail? (Please consider whether existing challenges in the field are outlined clearly and whether the purpose of the letter is explained)**

Yes

**Does the article adequately reference differing views and opinions?**

Yes

**Are all factual statements correct, and are statements and arguments made adequately supported by citations?**

Yes

**Is the Open Letter written in accessible language? (Please consider whether all subject-specific terms, concepts and abbreviations are explained)**

Yes

**Where applicable, are recommendations and next steps explained clearly for others to follow? (Please consider whether others in the research community would be able to implement guidelines or recommendations and/or constructively engage in the debate)**

Partly

**Competing Interests:** No competing interests were disclosed.

**Reviewer Expertise:** Environmental Science and Technology, Chemosphere, Chem. Engin. J., Water Research, J. Hazardous Materials, Environtal Toxicology and Chemistry, J. Agricultural and Food Chemisry, and many others

**I confirm that I have read this submission and believe that I have an appropriate level of expertise to confirm that it is of an acceptable scientific standard, however I have significant reservations, as outlined above.**

Author Response 09 May 2022

**Sam Welch**

Thank you for your review of our paper. We've attempted to address the following feedback:

***As I guess the project has been running since late 2019 or early 2020 there must be some concrete lines of thinking and results. And more graphics could be produced to help understand what are the novel parts. It should be possible to show figures or graphics where you have global stressors and then the major impacts you are investigating.***

Deliverables and outputs, including novel published work so far, are summarised later in the paper. Two additional figures have been added, summarising a) the overall project and ESRs and b) probabilistic risk assessment.

***I couldn't clearly understand how climate effects on cropping patterns and crop migration in Europe affects agrochemicals dispersion and fate. The green transition agenda is moving fast - so where are all the "biologicals" and gene technologies used in biopesticide approaches? Cropping patterns are shifting fast as farmers have to use more leguminous protein-producing crops - this may have many consequences.***

ESR11 addresses in the last paragraph interactions between climate effects and agrochemical dispersion and fate; more information can be found in their papers. Biopesticide approaches are largely outside of the scope of the project, as a work addressing chemical pollution.

***You may also help the reader on the model side. If you are not experienced with models, then you get lost here. So what are the conceptual approaches and the novelties that you introduce in order to be able to handle and model the global changes? Most of the agricultural contaminants have passed soil systems before they are seen in rivers, lakes or groundwater. Where are fate processes in soils as affected by climate (which ESRs) - must be one of the most critical points.***

Planned modelling of global changes largely involves the employment of existing scenarios and approaches to answer the questions posed in the paper, rather than novel approaches. ESR3 hopes to include some consideration of climate-driven effects on fate processes in soils, while ESR 11 is currently working to combine Bayesian Networks and the WISPE exposure prediction model, which includes climate conditions and their effect on the pesticide exposure via fate and transport in soil, although this is not ready yet for publication.

***For urban environments flooding and flushes must be critical, but how is it included?***

We agree with reviewer comment that flooding and flushes are critical for urban environments, especially for specific environments like York where these problems already occur. Future climatic events including flooding, rainfall or droughts are included in the RCPs scenarios. In the developments of our scenarios, RCPs climate events data will be included and therefore considered on the future chemical emissions in urban environments. Phrasing of the manuscript has been updated to clarify this.

***Another development that is running fast is the analytical capabilities - non-target approaches I guess will be the standard in 10 years. So talking about 2050 - how do we get the new analytical capabilities and data explosion included in risk assessment? So regulation may change substantially as the list of risk chemicals may grow exponentially.***

Although this is an important issue, ESR 11 and 12's work focuses on mainly on prospective risk assessment, using past data to predict future risk. Probabilistic risk assessment may be better placed to address more complex data, but ultimately the scope of the ECORISK 2050 project does not include these particular future concerns.

***The dissemination activities, the training activities and the collaboration between academia and industry needs more emphasis. When reading this paper how can the reader***

***get insight, learn, get involved and be trained? And how will regulation and public authorities as well as other stakeholders get on board?***

We've sought to address this request by adding tables summarising: a) government, industry and academic partners and b) online courses delivered as part of the project's outreach work. Although the training element of this project has largely completed, we have updated the Results and Dissemination section to clarify our remaining planned work, hosting a concluding workshop to present to stakeholders in October 2022 and the creation of policy briefs.

**Competing Interests:** No competing interests were disclosed.

Reviewer Report 26 January 2022

<https://doi.org/10.21956/openreseurope.15410.r28239>

© 2022 Bláha L. This is an open access peer review report distributed under the terms of the [Creative Commons Attribution License](#), which permits unrestricted use, distribution, and reproduction in any medium, provided the original work is properly cited.



**Luděk Bláha** 

<sup>1</sup> Faculty of Science, RECETOX, Masaryk University, Brno, Czech Republic

<sup>2</sup> Faculty of Science, RECETOX, Masaryk University, Brno, Czech Republic

This Open letter introduces and summarizes the objectives and (planned) activities of the ECORISK2050 ITN. This is an ambitious project with several components and complex outcomes. The text is well elaborated, it is informative, and provides a number of inspirations for readers. In addition to outlining the challenges, it also provides reasonable approaches how to tackle them (namely through individual projects of ESRs).

The following points could be considered:

The text ends with the Dissemination and Outreach section (and there are no Conclusions). I think that reader would benefit from having a brief or illustrative conclusions/summary at the end. It could, for example, provide some highlights (e.g. highlight limited number of the most important or practical outcomes/tools, etc).

The ITN runs since 2019, and there are certainly already some solid results/outcomes. The text is written in the future time (what will be done) but it might be beneficial to provide a current update on what has been actually achieved so far.

**Is the rationale for the Open Letter provided in sufficient detail? (Please consider whether existing challenges in the field are outlined clearly and whether the purpose of the letter is explained)**

Yes



**Does the article adequately reference differing views and opinions?**

Yes

**Are all factual statements correct, and are statements and arguments made adequately supported by citations?**

Yes

**Is the Open Letter written in accessible language? (Please consider whether all subject-specific terms, concepts and abbreviations are explained)**

Yes

**Where applicable, are recommendations and next steps explained clearly for others to follow? (Please consider whether others in the research community would be able to implement guidelines or recommendations and/or constructively engage in the debate)**

Yes

**Competing Interests:** No competing interests were disclosed.

**Reviewer Expertise:** Environmental Toxicology

**I confirm that I have read this submission and believe that I have an appropriate level of expertise to confirm that it is of an acceptable scientific standard.**

Author Response 06 May 2022

**Sam Welch**

Thank you for your review of our paper. We've addressed the following feedback:  
***The text ends with the Dissemination and Outreach section (and there are no Conclusions). I think that reader would benefit from having a brief or illustrative conclusions/summary at the end. It could, for example, provide some highlights (e.g. highlight limited number of the most important or practical outcomes/tools, etc).***

***The ITN runs since 2019, and there are certainly already some solid results/outcomes. The text is written in the future time (what will be done) but it might be beneficial to provide a current update on what has been actually achieved so far.***

Tables have been added, summarising the journal articles and project deliverables published at time of writing, as well as the now concluded series of Massive Open Online Courses organised by the project and now freely available online.

**Competing Interests:** No competing interests were disclosed.