

Research Paper

Melatonin Potentiates Sensitivity to 5-Fluorouracil in Gastric Cancer Cells by Upregulating Autophagy and Downregulating Myosin Light-Chain Kinase

Xiaorui Shi^{1#}, Hongxia Li^{3#}, Zhangyong Dan^{1#}, Chuanlin Shu¹, Rumeng Zhu¹, Qingling Yang⁴, Yi Wang^{1,2,4✉}, Huaqing Zhu^{1✉}

1. Laboratory of Molecular Biology, Department of Biochemistry, Anhui Medical University, Hefei 230032, China.
2. Department of Biological Engineering, School of Life Sciences, Anhui Medical University, Hefei 230032, China.
3. Department of Oncology, The Third Affiliated Hospital of Anhui Medical University, Hefei 230032, China.
4. Anhui Province Key Laboratory of Translational Cancer Research, Bengbu Medical College, Anhui 233030, China.

These authors contributed equally to this work.

✉ Corresponding authors: Professor Huaqing Zhu, E-mail: aydzhq@126.com (H.Z.); Dr. Yi Wang, E-mail: wangyi@ahmu.edu.cn (Y.W.).

© The author(s). This is an open access article distributed under the terms of the Creative Commons Attribution License (<https://creativecommons.org/licenses/by/4.0/>). See <http://ivyspring.com/terms> for full terms and conditions.

Received: 2023.04.17; Accepted: 2023.07.23; Published: 2023.08.21

Abstract

5-Fluorouracil is an effective chemotherapeutic drug for gastric cancer. However, the acquisition of chemotherapeutic resistance remains a challenge in treatment. Melatonin can enhance the therapeutic effect of 5-fluorouracil; however, the underlying mechanisms are not well understood. We investigated the effects of combinations of melatonin and 5-fluorouracil on the proliferation, migration and invasion of gastric cancer cells. Melatonin significantly potentiated the 5-fluorouracil-mediated inhibition of proliferation, migration and invasion in gastric cancer cells, which potentiates sensitivity to 5-FU by promoting the activation of Beclin-1-dependent autophagy and targeting the myosin light-chain kinase (MLCK) signaling pathway. Previous studies have shown that autophagy might be associated with the MLCK signaling pathway. The autophagy inhibitor, 3-methyladenine, effectively rescued the migratory and invasive capabilities of gastric cancer cells, while also reducing expression level of MLCK and the phosphorylation level of MLC. This indicates that autophagy is involved in tumor metastasis, which may be related to inhibition of the MLCK signaling pathway. Our findings indicate that melatonin can improve the effectiveness of 5-fluorouracil in gastric cancer and could be used as a supplemental agent in the treatment of gastric cancer with 5-fluorouracil.

Keywords: melatonin; 5-Fluorouracil; autophagy; gastric cancer; MLCK

Introduction

Gastric cancer (GC) is an aggressive and among the most common malignant tumors worldwide, being the second major cause of cancer-related deaths [1-4]. It arises from the inner lining of the stomach and can spread rapidly to the nearby organs and tissues. Although significant progress has been made in the treatment of GC, the mortality rate among patients with the disease remains alarmingly high. The persistently high mortality rate may be attributed to the frequent recurrence of tumors and occurrence of distant metastases [5-9].

5-Fluorouracil (5-FU) is an effective chemotherapeutic drug for GC treatment [10-12]. It is a pyrimidine analog and an antimetabolite that inhibits the synthesis of thymine nucleotides, inhibits DNA synthesis, and thereby, the growth of cells, ultimately leading to tumor treatment. However, the development of 5-FU resistance and side effects are two major obstacles to its clinical application [13]. Combination of 5-FU with other agents has been used as an effective treatment for GC [14,15].

Melatonin (MLT), also known as pineal hormone, is an indole hormone, mainly produced in the pineal glands of humans and other mammals [16]. MLT has anti-inflammatory, antioxidant, free radical-scavenging, antiautophagy and other biological functions [17]. Several studies have shown that MLT exhibits chemotherapeutic potential against human cancers by regulating cell growth, proliferation and autophagy [18,19]. MLT has been proven to improve drug efficacy, reduce drug toxicity and overcome chemotherapy resistance in cancer; however, the role of MLT in combination with 5-FU in gastric cancer therapy deserves further investigation [20,21].

Myosin light-chain kinase (MLCK) is a key enzyme that regulates a number of cytoskeletal regulatory proteins. It plays a crucial role in regulating the contraction and relaxation of smooth muscle cells by phosphorylating the myosin light chain (MLC) [22]. The phosphorylation of MLC triggers a cascade of cytoskeletal regulatory proteins that ultimately lead to changes in the shape and movement of cells. In addition to its role in smooth muscle cells, MLCK is also involved in various cellular processes, such as cell proliferation, migration and invasion, particularly in cancer cells, where it has been shown to promote tumor growth and metastasis. Thus, MLCK is an attractive target for the development of anticancer therapies [23-28].

In this study, we investigated whether MLT can act synergistically with 5-FU in the treatment of GC using *in vitro* experiments on SGC-7901 and MGC-803 cell lines. We also examined the effects of 5-FU and MLT combination treatment on the expression levels of MLCK and autophagy-related proteins as well as the phosphorylation level of MLC to decipher the mechanisms underlying the effects of these two drugs in SGC-7901 and MGC-803 cells. We show that MLT potentiates the effects of 5-FU in improving gastric cancer sensitivity through multiple signaling pathways, which suggests that this combination therapy may be a more effective method for chemotherapy of GC.

Materials and Methods

Cell culture

GC cell lines, SGC-7901 and MGC-803, were obtained from the American Type Culture Collection (ATCC, Manassas, VA, USA). Cells were cultured in Dulbecco's modified Eagle Medium (DMEM; WISENT, Uruguay, South America) containing 10% fetal bovine serum (FBS; WISENT) under 5% CO₂ at 37 °C. The cells were treated with MLT (1 mM), 5-FU (1 or 10 µg/mL) or their combination for 48 h.

Cell proliferation assay

Cell proliferation was assayed using the MTT method [29]. Hundred microliter cell suspension was added to the wells of 96-well plates at a density of 1.0×10^4 cells per well, with six replicates for each group. Following treatment of cells with MLT (0, 0.125, 0.25, 0.5 or 1 mM) or 5-FU (1, 10, 20, 50 or 100 µg/mL) or with their combination for 24, 48 or 72 h, MTT solution (20 µL; 5 mg/mL) was added to each well. After incubation at 37 °C for 4 h, the MTT solution was replaced with 150 µL dimethyl sulfoxide (DMSO). The optical density (OD) of the solution in each well was measured at 490 nm using a microplate reader after shaking at a low speed for 10 min. The optimum concentrations of MLT and 5-FU were determined based on the MTT assay results.

Immunofluorescence

GC cells were treated with the drugs and then fixed with 4% paraformaldehyde for 10 min, permeabilized with 0.1% Triton X-100 at 4 °C for 1 min and blocked with 2% bovine serum albumin (BSA) for 1 h at 37 °C. After two washes with phosphate-buffered saline (PBS), the cells were blocked with goat serum at 37 °C for 30 min. The cells were then incubated overnight with the primary antibody Ki67 (Invitrogen, USA) at 4 °C. All samples were incubated with 4',6-diamidino-2-phenylindole (DAPI) in the dark for 15 min after exposure to goat anti-rabbit IgG (H&L) for 1 h. Finally, the cells were visualized using a fluorescence microscope.

Western blot analysis

GC cells were lysed in RIPA lysis buffer containing 50 mM Tris (pH 7.4), and the extracted protein was quantified using a BCA Protein Assay Reagent Kit (Beyotime, Shanghai, China). Each sample was then separated by electrophoresis on a 10% SDS-polyacrylamide gel and electroblotted onto a nitrocellulose membrane. The membranes were blocked with 5% skimmed milk in Tris Buffered Saline Tween (TBST) for 2 h and incubated overnight at 4 °C with primary antibodies against MLCK (Santa Cruz Biotechnology, Cat# sc-365352), phosphorylated myosin light chain (pMLC) (Cell Signaling Technology, Cat# 3674), MLC (Cell Signaling Technology, Cat# 8505), p62 (Abmart, Cat# sc-48402), Beclin-1 (Abmart, Cat# T55092), LC3B (Cell Signaling Technology, Cat# 3868) or GAPDH (Santa Cruz Biotechnology, Cat# sc-365062). The PVDF membranes were then washed three times with TBST and incubated with secondary antibodies diluted in 3% milk for 2 h at room temperature. The membranes were washed three times with TBST, and the protein bands were visualized using chemiluminescence.

Wound-healing assay

A wound-healing assay was performed to detect the migration ability of cells. GC cells were cultured to 100% confluence in 6-well plates. The cell monolayer was scratched with a sterile 100 μ L pipette tip, and the wells were washed with phosphate-buffered saline (PBS) to remove the cells dislodged from the wells. The wound gap was observed and photographed using a Leica DM 14000 B microscope. GC cells were treated with 5-FU, MLT or their combination and cultured in a CO₂ incubator. After 48 h, the culture medium was replaced with PBS, the wound gap was observed and photographed using a microscope equipped with a digital camera, and the width of the wound gap was measured.

Migration and invasion assay

Migration and invasion abilities of the cells were examined using the Transwell assay performed in Transwell cell culture chambers (8.0 μ m pore size) [30,31]. Briefly, 2.0×10^5 cells were inoculated in a 24-well Transwell chamber for migration experiments or in 10% FBS-containing DMEM in chambers coated with Matrigel for invasion experiments. A 200 μ L suspension of cells was added at a density of 2.0×10^5 cells/well, and 600 μ L of DMEM containing 10% FBS was added to the lower chamber. After the GC cells had adhered to the chamber wall (after 6 h), the complete medium was replaced with serum-free medium, and the cells were treated with 5-FU or a combination of MLT and 5-FU for approximately 40 h. Next, 10% serum (60 μ L) was added to the lower chamber and allowed to stand for approximately 8 h. The medium in the upper chamber was washed twice with preheated PBS. The cells were fixed with 4% paraformaldehyde (Biosharp, Beijing, China). Invasive cells on the back of the membrane were stained with 0.1% crystal violet (Biosharp). The cells that could not penetrate the membrane were removed using a wet cotton swab. The numbers of migrating or invading cells were calculated by counting in five random fields of view under a light microscope and expressed as mean \pm SE.

Autophagic flux assay

GC cells were transfected with an mRFP-GFP-LC3 adenovirus (HanBio, Shanghai, China) to detect autophagosomes and autolysosomes. After transfection for 6 h, the cells were treated with 5-FU or a combination of MLT and 5-FU. Autophagic flux was estimated by visualizing the cells using a fluorescence microscope [32,33].

Statistical analysis

All analyses were performed using the

GraphPad Prism 8.0 or ImageJ software. Data are presented as mean \pm standard deviation (SD) of triplicate samples or at least three independent experiments. The data were subjected to one-way ANOVA with Tukey's multiple comparison test and unpaired parametric *t*-test and are presented as mean \pm SD. Statistical significance was set at $p < 0.05$.

Results

Antiproliferative effect of MLT and 5-FU combination on GC cells

The rate of inhibition of GC cell proliferation was determined using the MTT assay. SGC-7901 and MGC-803 cells were treated with 0, 0.125, 0.25, 0.5 or 1 mM MLT or 1, 10, 20, 50 and 100 μ g/mL 5-FU alone or in combination (1 mM MLT and 1 or 10 μ g/mL 5-FU). As shown in Figure 1A, MLT inhibited the proliferation of GC cells in a concentration-dependent manner. However, the proliferation of GC cells was significantly inhibited (38.96%) even when treated with 1 μ g/mL 5-FU alone. The inhibition rates were 38.96% with 1 μ g/mL 5-FU alone (Figure 1A), 52.68% with a combination of 1 μ g/mL 5-FU and 1 mM MLT, and 54.82% with 10 μ g/mL 5-FU alone. Thus, for further experiments in this study, we used 1 and 10 μ g/mL 5-FU. Moreover, the inhibition rate of treatment with a combination of 10 μ g/mL 5-FU and 1 mM MLT in SGC-7901 and MGC-803 cells was >70%. GC cells were treated with MLT (1 mM) or 5-FU (1 or 10 μ g/mL) alone, with the MLT and 5-FU combination, or with a combination of 5-FU, MLT and 3-MA for 24, 48 or 72 h (Figure 1B). Compared with the treatment with MLT or 5-FU alone, the combination therapy significantly reduced cell proliferation. The cell survival was inhibited by 85%, which was well over half of the inhibition rate at 72 h. The optimal duration of the drug treatment was 48 h. Therefore, GC cells were treated with 5-FU (1 or 10 μ g/mL) alone or in combination with 1 mM MLT for 48 h.

Immunofluorescence staining showed that treatment with the combination of MLT (1 mM) and 5-FU (1 or 10 μ g/mL) resulted in fewer Ki-67-positive cells than the treatment with a single drug (Figure 1C) indicating that the combined therapy was more efficient at inhibiting the proliferation of GC cells.

Effect of treatment with MLT and 5-FU combination on the migration and invasion of GC cells

In addition to investigating the effects of MLT alone on GC cell migration and invasion, we explored the potential synergistic effects of MLT and 5-FU on the migratory and invasion abilities of GC cells using

a wound-healing assay. Treatment with MLT (1 mM) or 5-FU (1 or 10 µg/mL) alone inhibited cell migration (Figure 2A), and this effect was enhanced by the combination treatment. After 48 h, the wound in the cell layer tended to close in the DMSO group. However, the gap in the treatments with MLT (1 mM), 5-FU (1 µg/mL) alone or 5-FU (1 µg/mL) in combination with MLT failed to close. Moreover, with an increase in 5-FU concentration, the gap became larger, and the cells were in an unhealthy state. These findings suggested that combination therapy with 1 mM MLT and 1 µg/mL 5-FU significantly inhibited cell migration (Figure 2B, C).

To comprehensively evaluate the effect of the combination treatment on the migration and invasion of GC cells, we performed Transwell migration and invasion assays. These assays enable the evaluation of the ability of cells to migrate through a porous membrane or invade through a matrix-coated membrane, respectively. Migrating and invading cells on the lower surface of the Transwell chambers were stained with crystal violet, and the number of cells was counted under a light microscope. Treatment with MLT (1 mM) alone reduced the number of cells penetrating the membrane compared with the blank control (Figure 2D-H) and treatment with 5-FU (1 or 10 µg/mL) had a more prominent effect. Treatment with an MLT (1 mM) and 5-FU (1 or 10 µg/mL) combination remarkably inhibited GC cells from

penetrating Matrigel (Figure 2D-H). Quantitative analysis revealed that the combination treatment significantly enhanced the inhibition of cell migration and invasion compared with the 5-FU alone treatment (Figure 2E-H).

Effect of treatment with MLT and 5-FU combination on the MLCK signaling pathway in GC cells

We investigated the effect of treatment with the MLT and 5-FU combination on the expression level of MLCK and the phosphorylation level of MLC, which is involved in the proliferation, migration and invasion of cancer cells in GC cells using western blotting. The combination treatment markedly suppressed the expression level of MLCK and the phosphorylation level of MLC in GC cells (Figure 3A-E), which indicates that this combination treatment could inhibit the MLCK signaling pathway.

Effect of treatment with MLT and 5-FU combination on autophagy in GC cells

Autophagy plays an essential role in the progression of GC [34,35]. To determine whether the synergistic inhibition of cell growth by 5-FU and MLT was related to the activation of autophagy, we measured autophagy flux. After treatment with MLT (1 mM) or 5-FU (1 or 10 µg/mL) alone or in combination for 48 h, GC cells transfected with

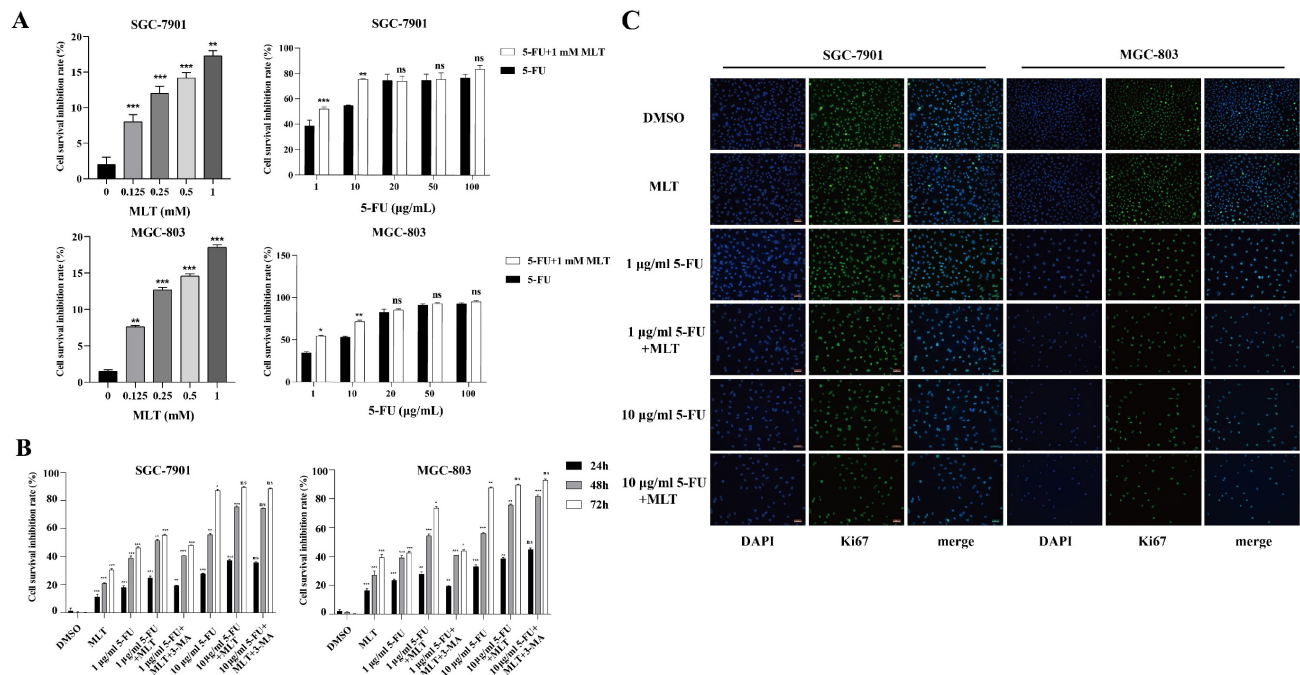


Figure 1. Effect of melatonin (MLT) and 5-fluorouracil (5-FU) combination on the proliferation, migration and invasion of gastric cancer (GC) cells. **(A, B)** The cells were treated with MLT (1 mM) or 5-FU (1 or 10 µg/mL) alone or in combination at specific doses. Following treatment for 24, 48 or 72 h, the rate of inhibition of cell proliferation was determined using the MTT assay. **(C)** Immunofluorescence staining of GCs for Ki67. The experiments were performed three times to ensure accuracy and consistency. One-way ANOVA with Tukey's multiple comparison test was used for statistical analysis. Data are presented as mean ± SD. And statistical significance is indicated using asterisks (**p* < 0.05, ***p* < 0.01, ****p* < 0.001).

MRFP-GFP-LC3 tandem fluorescent protein adenovirus were photographed using a fluorescence microscope (Figure 4A). Compared with the solvent control group, the yellow bright spots were increased in the treatment with MLT or 5-FU alone, and the effect was further increased in the combination treatment. This indicates an increase in autophagy upon treatment with the 1 mM MLT and 1 µg/mL 5-FU combination.

We further investigated the effect of the combination of MLT and 5-FU on the expression levels of autophagy-related proteins. The expression levels of LC3B and Beclin-1 were markedly upregulated, whereas that of p62 was downregulated upon treatment with the MLT (1 mM) and 5-FU (1 µg/mL) combination (Figure 4B-I). This suggests that the MLT and 5-FU combination therapy can promote autophagy in gastric cancer cell lines.

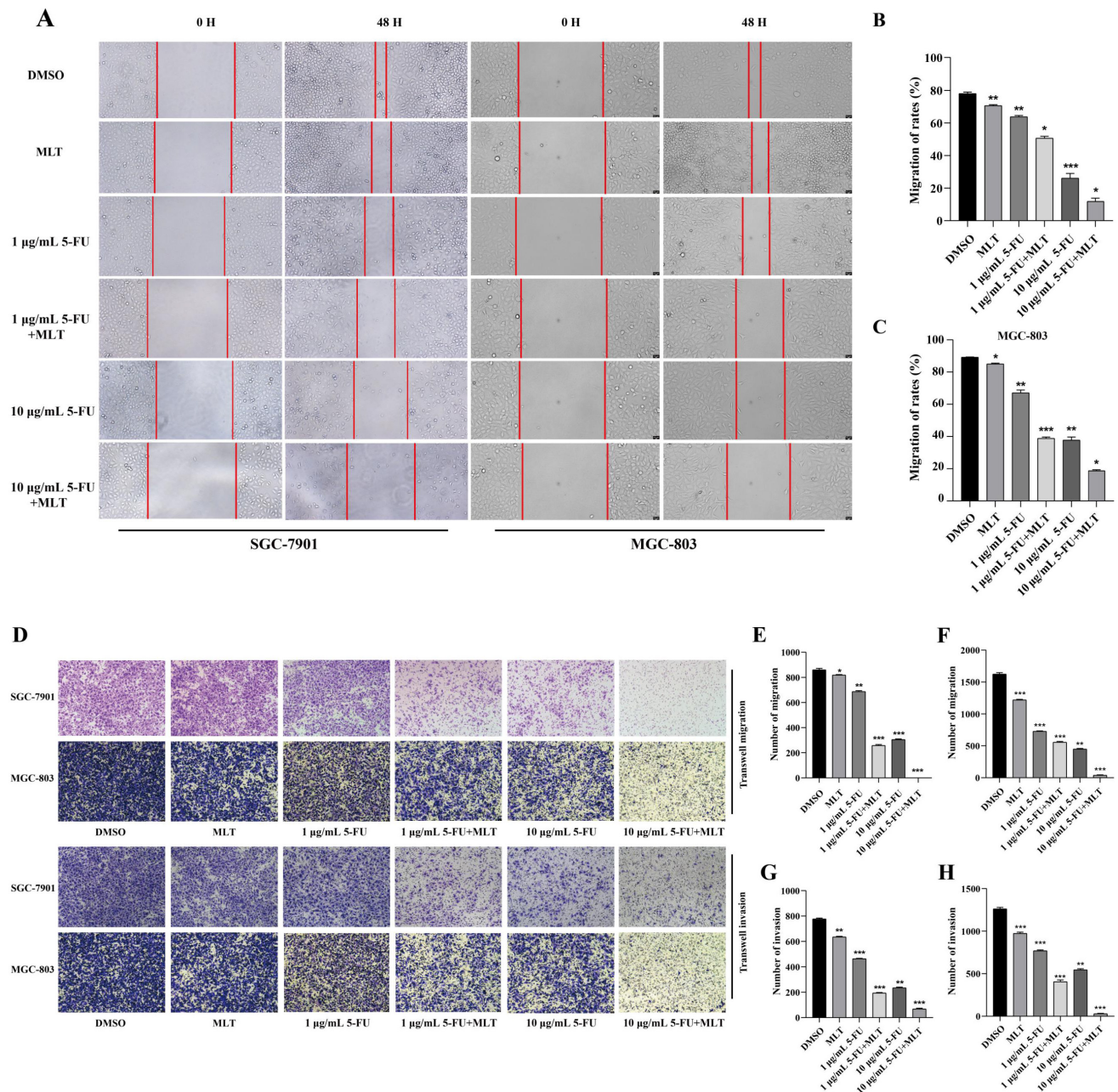


Figure 2. Assessment of cell migration and invasion using wound-healing assay. **(A)** Gastric cancer (GC) cells were cultured to confluence. And the cell monolayer, which formed, was damaged with a sterile tip of a 100 µL pipette. The cells were further treated with 5-fluorouracil (5-FU; 1 or 10 µg/mL) alone or in combination with melatonin (MLT; 1 mM). **(B, C)** The cells in culture were photographed and the width of the wound was measured at 0 and 48 h after treatment to calculate the percentage of cell migration. **(D)** Results of the Transwell migration experiment. **(E-H)** Invasion of SGC-7901 and MGC-803 cells treated with MLT or 5-FU alone or in combination for 48 h. The cells were photographed. And the percentage of invasive cells was calculated. The experiments were performed three times to ensure accuracy and consistency. One-way ANOVA with Tukey's multiple comparison test was used for statistical analysis. Data are presented as mean ± SD. And statistical significance is indicated using asterisks (**p* < 0.05, ***p* < 0.01, ****p* < 0.001).

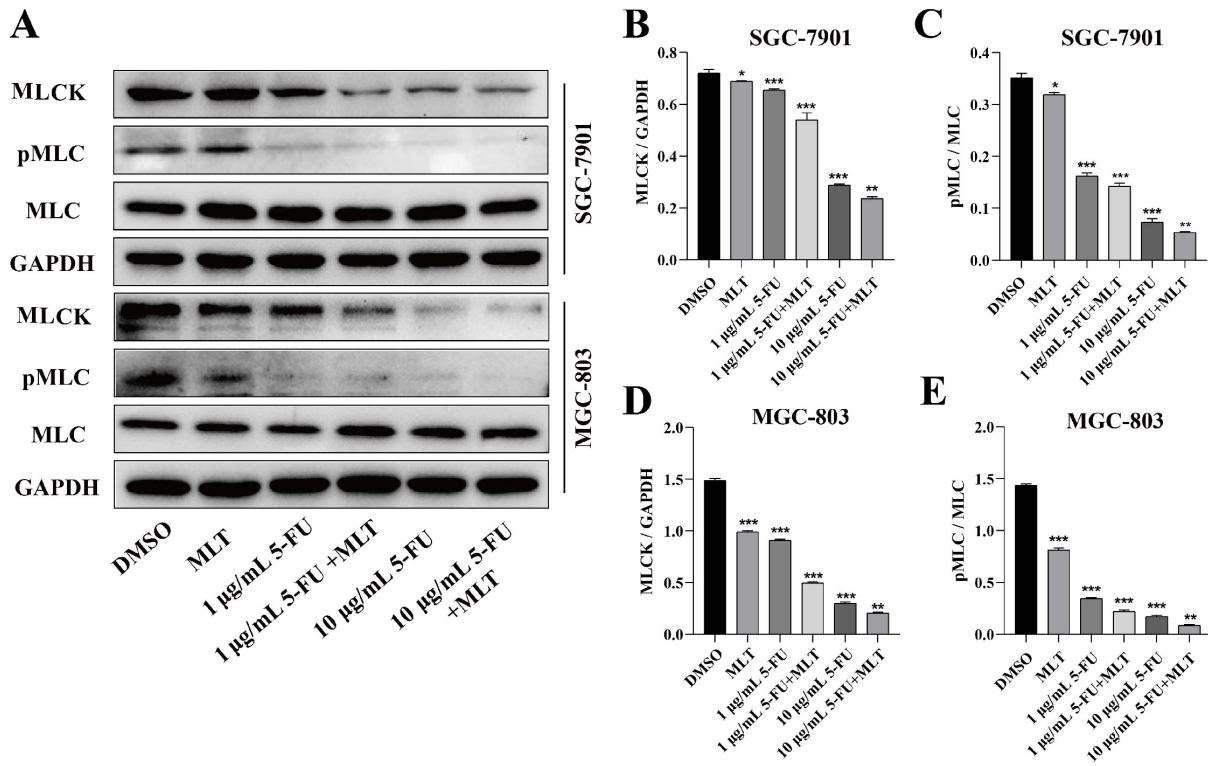


Figure 3. Effect of melatonin (MLT) and 5-fluorouracil (5-FU) on the myosin light-chain kinase (MLCK) signaling pathway in gastric cancer (GC) cells. **(A)** GC cells were cultured and treated with the MLT and 5-FU combination for 48 h. **(B-E)** The expression level of MLCK and the phosphorylation level of MLC were determined using western blotting, which were significantly downregulated by the combination treatment. The experiments were performed three times to ensure accuracy and consistency. One-way ANOVA with Tukey's multiple comparison test was used for statistical analysis. Data are presented as mean ± SD. And statistical significance is indicated using asterisks (**p* < 0.05, ***p* < 0.01, ****p* < 0.001).

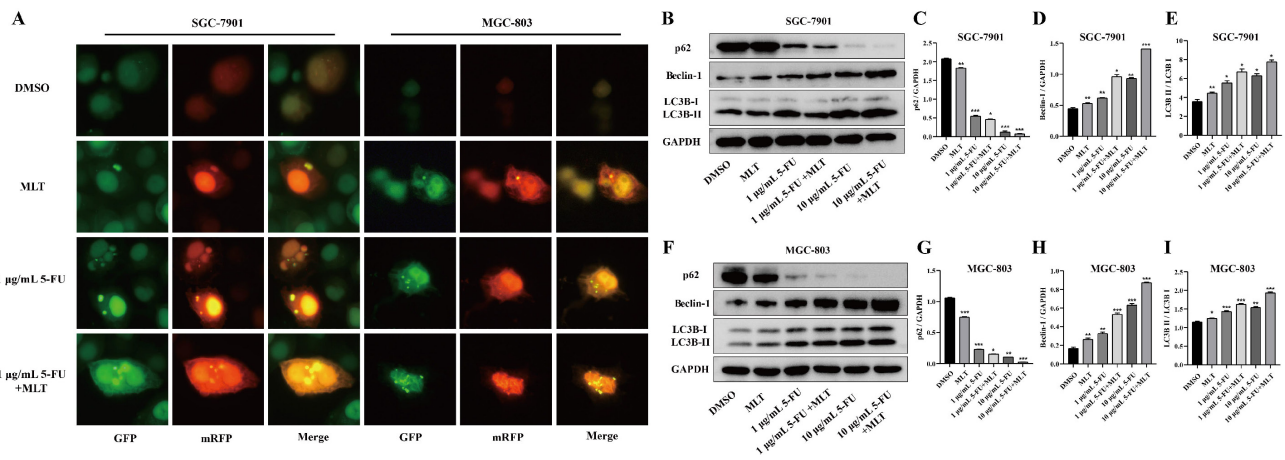


Figure 4. Effect of melatonin (MLT) and 5-fluorouracil (5-FU) combination on autophagy in gastric cancer (GC) cells. **(A)** GC cells overexpressing mRFP-GFP-LC3 were treated with MLT or 5-FU alone or in combination for 48 h. The cells were subsequently observed and photographed using a fluorescence microscope and the picture retains the scale. **(B-I)** In cells subjected to combination treatment, the expression levels of Beclin-1 and LC3B were upregulated and that of p62 was downregulated compared with that in the DMSO group. The experiments were performed three times to ensure accuracy and consistency. One-way ANOVA with Tukey's multiple comparison test was used for statistical analysis. Data are presented as mean ± SD. And statistical significance is indicated using asterisks (**p* < 0.05, ***p* < 0.01, ****p* < 0.001).

Effects of treatment with MLT and 5-FU combination in GC cells were alleviated by 3-methyladenine

Because cell proliferation, migration and invasion are pivotal processes in cancer [36,37], the autophagy inhibitor 3-methyladenine (3-MA) was used as a key factor for cancer regulation. After 48 h of treatment, the wound gap in the solvent control group

tended to close, whereas that in the drug treatment group did not (Figure 5A-C). Moreover, compared with the drug treatment group, the autophagy inhibitor 3-MA (2.5 mM) caused the wound gap to close, indicating that 3-MA promoted the migration of GC cells. The Transwell assay was performed to investigate whether 3-MA inhibited the invasive ability of the cells. The number of cells passing

through the Transwell chambers was significantly reduced in the MLT and 5-FU combination treatment groups (Figure 5D-F) compared with that in the DMSO control group. This suggests that the combination of MLT and 5-FU had a synergistic inhibitory effect on the migration and invasion of GC cells. Furthermore, treatment with 3-MA resulted in an increase in the number of cells passing through the membrane compared with that in the drug treatment group. This finding suggests that 3-MA promotes the invasion of GC cells.

We also investigated the effects of 3-MA on the expression level of MLCK, the phosphorylation level of MLC and the expression levels of three key autophagy proteins (p62, LC3B and Beclin-1) in GC cells. The expression levels of LC3B and Beclin-1 were upregulated and those of MLCK, MLC phosphorylation and p62 were downregulated upon treatment with the MLT (1 mM) and 5-FU (1 or 10 µg/mL) combination but these effects were reversed when the cells were treated with 2.5 mM 3-MA (Figure 6A-E). These results indicated the role of autophagy in the inhibition of cell proliferation, migration and invasion by MLT and 5-FU combination treatment.

Discussion

Owing to early metastasis [38-40], patients with

GC tend to have a poor prognosis and short lifespan. Metastasis involves the escape and migration of tumor cells and invasion of the basement membrane [41]. Understanding the underlying conditions that promote metastasis of GC cells is crucial for developing effective therapeutic options to control the growth and spread of GC.

5-FU is widely recognized as the first-line medicine for chemotherapy of GC owing to its ability to effectively improve overall survival rates. This drug works by inhibiting DNA and RNA synthesis in cancer cells, ultimately leading to their death. However, resistance to 5-FU results in a limited therapeutic effect [42]. Thus, there is an urgent need to improve the efficacy of 5-FU. Many studies have shown that MLT has important oncostatic properties in a myriad of cancers, including gastric and liver cancers [43-46]. Shen et al. reported that MLT exerts antiproliferative and proautophagic effects on head and neck squamous cell carcinoma (HNSCC) and can be used as a therapeutic agent for HNSCC [47]. In this study, we investigated the effects of the MLT and 5-FU combination. This combination increased the rate of survival inhibition and cytotoxic effects in SGC-7901 and MGC-803 GC cells. These results showed that treatment with 5-FU alone inhibited cell migration and invasion, whereas its combination with MLT enhanced the inhibitory effects.

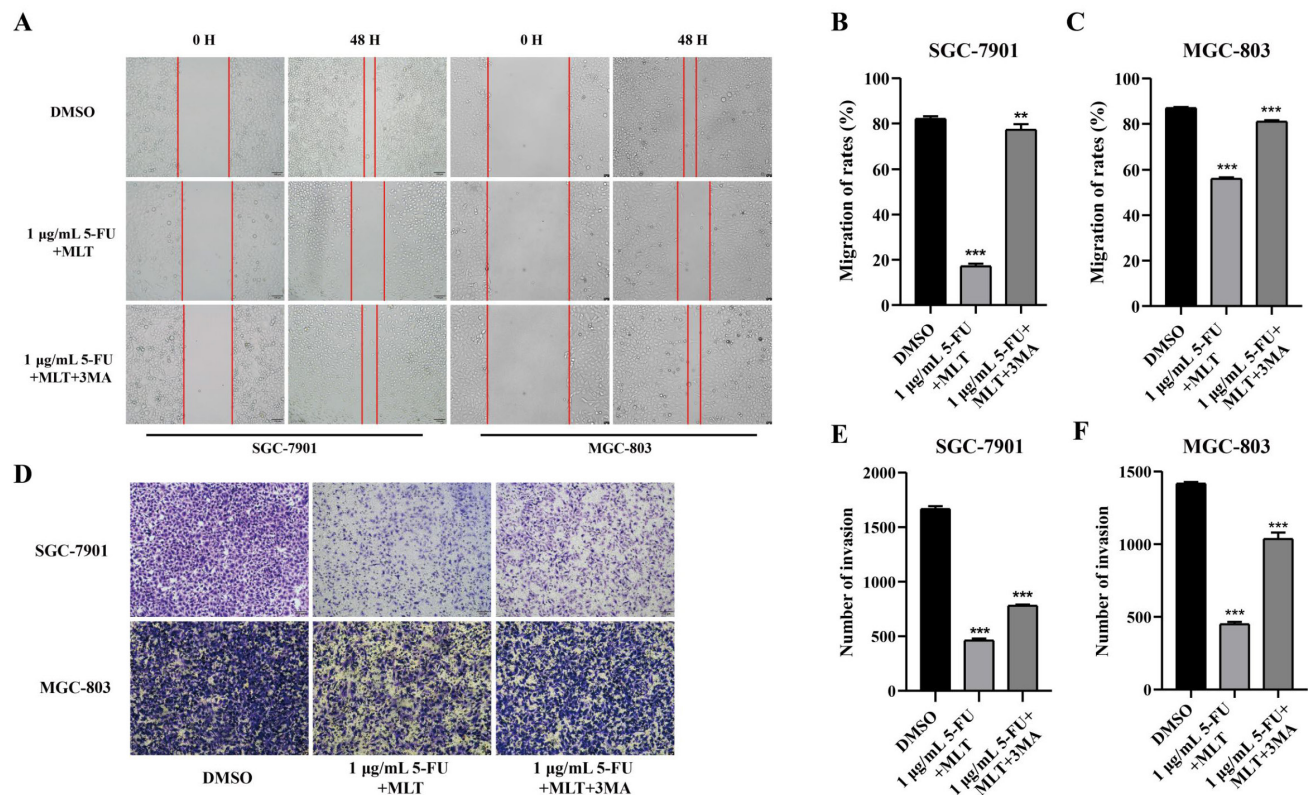


Figure 5. Effect of 3-methyladenine (3-MA) in combination with melatonin (MLT) and 5-fluorouracil (5-FU) on proliferation, migration and invasion of gastric cancer (GC) cells. (A-C) A wound-healing assay was performed to assess cell migration. GC cells were cultured to confluence. And the cell monolayer was scratched with a sterile tip of a 100 µL pipette. The cells were then left untreated or were treated with 5-fluorouracil (5-FU) and melatonin (MLT) or 5-FU, MLT and 3-MA combinations. The cells in culture were

photographed and the width of the wound was measured after 48 h of treatment. (D) Cell invasion was analyzed following treatment with either the 5-FU and MLT combination or the 5-FU, MLT and 3-MA combination for 48 h. The invasive cells were observed and photographed. (E, F) Percentage of invasive cells. The experiments were performed three times to ensure accuracy and consistency. One-way ANOVA with Tukey's multiple comparison test was used for statistical analysis. Data are presented as mean ± SD. And statistical significance is indicated using asterisks (**p < 0.01, ***p < 0.001).

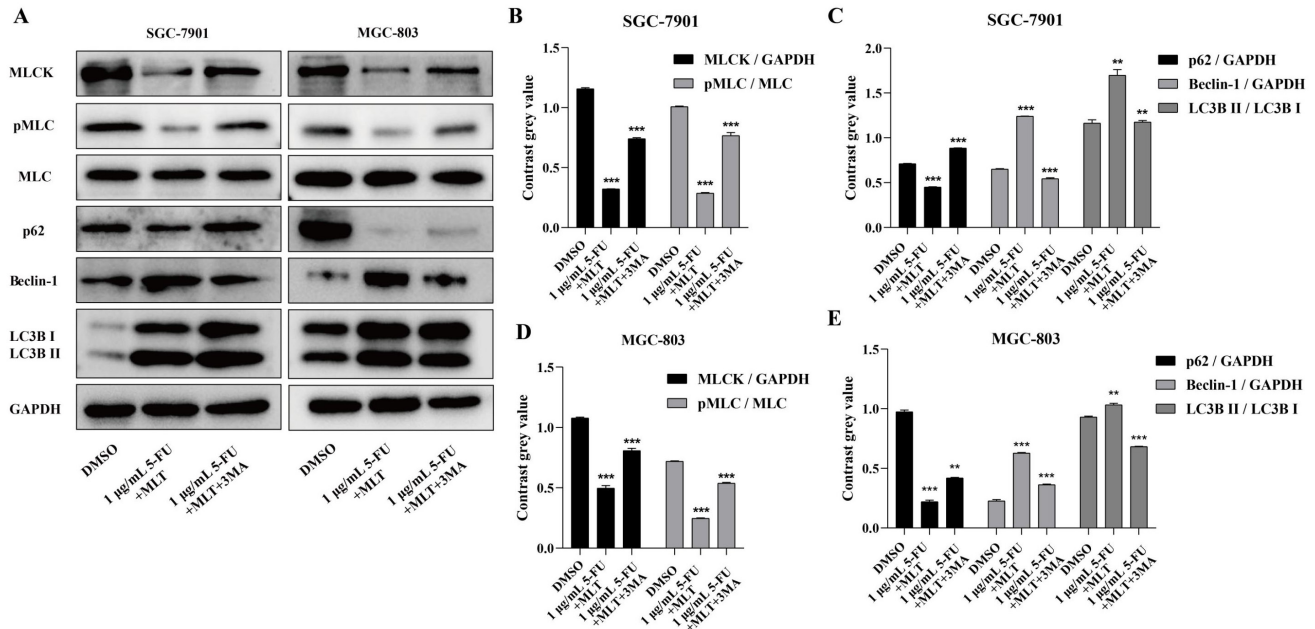


Figure 6. (A) Western blot analysis to assess the expression levels of autophagy-related proteins in response to treatment with the autophagy inhibitor, 3-methyladenine (3-MA). (B-E) The expression level of MLCK, the phosphorylation level of MLC and the expression level of p62 were significantly downregulated and the expression levels of Beclin-1 and LC3B were significantly upregulated in comparison with the DMSO group; however, these results were reversed when the cells were treated with 2.5 mM MLT. The experiments were performed three times to ensure accuracy and consistency. One-way ANOVA with Tukey's multiple comparison test was used for statistical analysis. Data are presented as mean ± SD. And statistical significance is indicated using asterisks (**p < 0.01, ***p < 0.001).

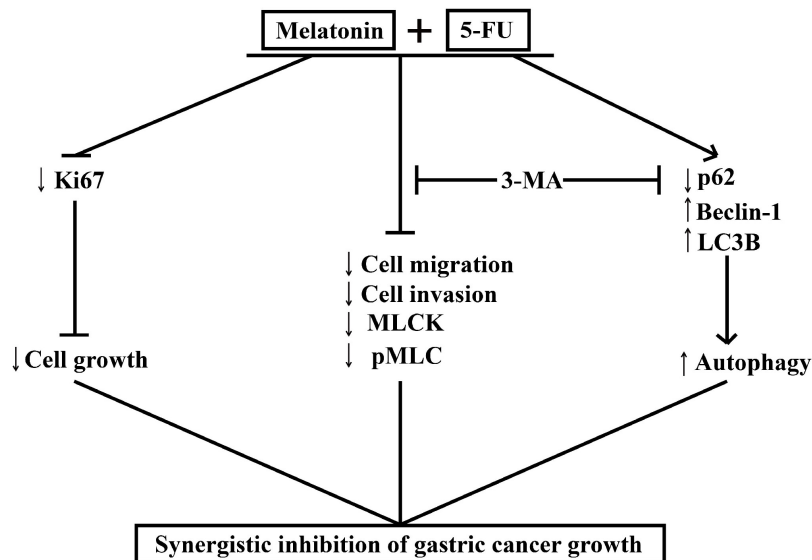


Figure 7. Melatonin synergizes the chemotherapeutic effect of 5-FU to inhibit the growth of gastric cancer by targeting multiple signaling pathways. Melatonin in combination 5-FU suppressed the expression level of Ki67, and inhibited the expression level of MLCK, the phosphorylation level of MLC and the expression level of p62, and promoted the expression levels of Beclin-1 and LC3B, thereby suppressed the MLCK signaling pathway and promoted autophagy signal pathway. And autophagy inhibitors 3-MA could reverse cell migration, cell invasion, the levels of MLCK expression, MLC phosphorylation and autophagy-related proteins expression.

MLCK is the primary protein promoting cell contractility [48], and MLC phosphorylation remarkably improves the migration and invasive abilities of GC cells [49]. Leiomyosarcomas, with high proliferative activity, exhibit high MLCK expression [50]. Numerous studies have established the pivotal role of MLCK in tumorigenesis, highlighting its

potential as a therapeutic target for various cancer types [51]. MLCK is encoded by *MYLK*, which controls smooth muscle contraction through MLC phosphorylation. Myosin II-mediated actomyosin contraction is responsible for force production during cell migration and plays a role in membrane protrusion at the frontier [52]. Because MLCK is a key

enzyme in the phosphorylation of MLC, it is thought to be required for cell migration and invasion. In our study, treatment of GC cells with 5-FU or a combination of MLT and 5-FU for 48 h resulted in the downregulation of MLCK expression. Simultaneously, the expression level of MLCK and the phosphorylation level of MLC were significantly decreased. This indicated that MLCK and MLC phosphorylation markedly improve the migration and invasive abilities of GCs.

Cancer cell migration and invasion are associated with autophagy [3,53]. Autophagic flux analysis revealed that treatment with the MLT and 5-FU combination enhanced the cytotoxic activity against GC cells by inducing autophagy. Recent studies have suggested that autophagy also contributes to cancer cell migration and invasion by regulating various signaling pathways and modulating the tumor microenvironment [54,55]. Our results showed that the expression levels of LC3B and Beclin-1 were increased, the expression level of p62 was decreased. And cell migration and invasion were hindered in GC cells treated with the 5-FU and MLT combination. Thus, the combination treatment could promote autophagy in SGC-7901 and MGC-803 cells. The autophagy inhibitor, 3-MA, could rescue the migration and invasive abilities of GC cells. The expression level of MLCK and the phosphorylation level of MLC were enhanced in the 3-MA treatment group compared with that in the drug treatment group. The expression levels of Beclin-1 and LC3B were decreased. And those of p62 were increased in the 3-MA treatment group compared with those in the drug treatment group. This indicated that autophagy is involved in tumor metastasis, which may be related to the inhibition of the MLCK signaling pathway.

Our study provides evidence that the combined treatment with 5-FU and MLT can lead to the dysfunction of GC cells, and would provide valuable insights into genetic markers related with GC. It is well known that ncRNAs are indeed closely related to the diagnosis and treatment of tumor. Zhao et al. present a new deep learning algorithm named as graph convolutional network with graph attention network (GCNAT) to predict the potential associations of disease-related metabolites. This kind of deep learning algorithm may help in the diagnosis and treatment of GC [56-61].

Conclusion

MLT synergizes with 5-FU to inhibit the growth of GC cells by enhancing their antiproliferative, antimigratory, and proautophagic activities. Our study demonstrates that MLT enhances the sensitivity of GC cells to 5-FU by enhancing autophagy and

downregulating MLCK. We examined the effects of the combination of MLT and 5-FU on the expression level of MLCK, the phosphorylation level of MLC and the expression levels of autophagy-related protein and in GC cells. The MLT and 5-FU combination reduced cell migration and invasion by enhancing autophagy and downregulating the expression level of MLCK, which was shown to be associated with enhanced autophagic activity. Moreover, the autophagy inhibitor, 3-MA, rescued the expression level of MLCK. Our study provides evidence that the combined treatment with 5-FU and MLT can lead to the dysfunction of GC cells. We showed that 5-FU in combination with MLT reduced autophagy, cell migration and invasion, thereby, minimizing the damage in GC, and that this effect was restrained through the regulation of autophagy and downregulation the expression level of MLCK (Figure 7). These findings provide new insights into the molecular mechanisms by which melatonin synergized GC cells to 5-FU treatment and suggest that such a combinatorial treatment might potentially become a more effective way in GC therapy.

Supplementary Material

Supplementary figures.

<https://www.jcancer.org/v14p2608s1.pdf>

Acknowledgments

This study was supported by the National Natural Science Foundation of China (No. 82170484), Key Research and Development Project in Anhui Province (No. 202004b11020025), Special Support Program for Innovative and Entrepreneurial Talents of Anhui Province, the open project of Anhui Province Key Laboratory of Translational Cancer Research (NO. KFKT202304), the University Science Research Project of Anhui Province (No. KJ2021A0247), and Translational Medical Program of Anhui Province (No. 2021 zhyx-C26), Translational Medical Program of Anhui Province (No. 2022 zhyx-C18).

Author Contributions

X.S. and H.L. performed the experiments. C.S., R.Z. and Q.Y. performed the analyses. H.Z. and Y.W. designed and supervised the project. Z.D. and X.S. wrote the manuscript, with input from all. All authors contributed to the manuscript.

Data Availability Statement

All raw data supporting the present study results can be obtained from the corresponding author upon reasonable request.

Competing Interests

The authors have declared that no competing interest exists.

References

- Rong L, Li Z, Leng X, et al. Salidroside induces apoptosis and protective autophagy in human gastric cancer AGS cells through the PI3K/Akt/mTOR pathway. *Biomed Pharmacother.* 2020;122:109726.
- Smyth EC, Nilsson M, Grabsch HI, van Grieken NC, Lordick F. Gastric cancer. *Lancet.* 2020;396(10251):635-648.
- Song Z, Wu Y, Yang J, Yang D, Fang X. Progress in the treatment of advanced gastric cancer. *Tumour Biol.* 2017;39(7):1010428317714626.
- Johnston FM, Beckman M. Updates on Management of Gastric Cancer. *Curr Oncol Rep.* 2019;21(8):67.
- Peng L, Sang H, Wei S, et al. circCUL2 regulates gastric cancer malignant transformation and cisplatin resistance by modulating autophagy activation via miR-142-3p/ROCK2. *Mol Cancer.* 2020;19(1):156.
- Tian S, Peng P, Li J, et al. SERPINH1 regulates EMT and gastric cancer metastasis via the Wnt/ β -catenin signaling pathway. *Aging (Albany NY).* 2020;12(4):3574-3593.
- Wei GH, Wang X. lncRNA MEG3 inhibit proliferation and metastasis of gastric cancer via p53 signaling pathway. *Eur Rev Med Pharmacol Sci.* 2017;21(17):3850-3856.
- Liu H, Xiang Y, Zong QB, et al. miR-6745-TIMP1 axis inhibits cell growth and metastasis in gastric cancer. *Aging (Albany NY).* 2021;13(21):24402-24416.
- Xia X, Zhang Z, Zhu C, et al. Neutrophil extracellular traps promote metastasis in gastric cancer patients with postoperative abdominal infectious complications. *Nat Commun.* 2022;13(1):1017.
- Li H, Lv J, Guo J, et al. 5-Fluorouracil enhances the chemosensitivity of gastric cancer to TRAIL via inhibition of the MAPK pathway. *Biochem Biophys Res Commun.* 2021;540:1108-1115.
- Li M, Chen H, He J, et al. A qualitative classification signature for post-surgery 5-fluorouracil-based adjuvant chemoradiotherapy in gastric cancer. *Radiother Oncol.* 2021;155:65-72.
- He L, Chen H, Qi Q, et al. Schisandrin B suppresses gastric cancer cell growth and enhances the efficacy of chemotherapy drug 5-FU in vitro and in vivo. *Eur J Pharmacol.* 2022;920:174823.
- Dong S, Liang S, Cheng Z, et al. ROS/PI3K/Akt and Wnt/ β -catenin signalings activate HIF-1 α -induced metabolic reprogramming to impart 5-fluorouracil resistance in colorectal cancer. *J Exp Clin Cancer Res.* 2022;41(1):15.
- Sugisawa N, Nishino H, Higuchi T, et al. A Gemcitabine Plus 5-Fluorouracil Combination Inhibits Gastric-Cancer Liver Metastasis in a PDX Model: A Novel Treatment Strategy. *Anticancer Res.* 2020;40(10):5393-5397.
- Hou G, Yuan X, Li Y, Hou G, Liu X. Cardamonin, a natural chalcone, reduces 5-fluorouracil resistance of gastric cancer cells through targeting Wnt/ β -catenin signal pathway. *Invest New Drugs.* 2020;38(2):329-339.
- Talib WH, Alsayed AR, Abuawad A, Daoud S, Mahmood AI. Melatonin in Cancer Treatment: Current Knowledge and Future Opportunities. *Molecules.* 2021;26(9):2506.
- Bhattacharya S, Patel KK, Dehari D, Agrawal AK, Singh S. Melatonin and its ubiquitous anticancer effects. *Mol Cell Biochem.* 2019;462(1-2):133-155.
- Fernández A, Ordóñez R, Reiter RJ, González-Gallego J, Mauriz JL. Melatonin and endoplasmic reticulum stress: relation to autophagy and apoptosis. *J Pineal Res.* 2015;59(3):292-307.
- Huang Y, Yuan K, Tang M, et al. Melatonin inhibiting the survival of human gastric cancer cells under ER stress involving autophagy and Ras-Raf-MAPK signalling. *J Cell Mol Med.* 2021;25(3):1480-1492.
- Mihanfar A, Yousefi B, Ghazizadeh Darband S, Sadighparvar S, Kaviani M, Majidinia M. Melatonin increases 5-fluorouracil-mediated apoptosis of colorectal cancer cells through enhancing oxidative stress and downregulating survivin and XIAP. *Bioimpacts.* 2021;11(4):253-261.
- Li Y, Li S, Zhou Y, et al. Melatonin for the prevention and treatment of cancer. *Oncotarget.* 2017;8(24):39896-39921.
- Kassianidou E, Hughes JH, Kumar S. Activation of ROCK and MLCK tunes regional stress fiber formation and mechanics via preferential myosin light chain phosphorylation. *Mol Biol Cell.* 2017;28(26):3832-3843.
- Harrison SM, Knifley T, Chen M, O'Connor KL. LPA, HGF, and EGF utilize distinct combinations of signaling pathways to promote migration and invasion of MDA-MB-231 breast carcinoma cells. *BMC Cancer.* 2013;13:501.
- Wang Y, Liu Y, Zhou W, Lin J, Wen L. Myosin Light-Chain Kinase Inhibitors Attenuate Nanoparticles-Induced Autophagy and Cytotoxicity by Suppression Endocytosis. *J Nanosci Nanotechnol.* 2019;19(7):3792-3797.
- Kim DY, Helfman DM. Loss of MLCK leads to disruption of cell-cell adhesion and invasive behavior of breast epithelial cells via increased expression of EGFR and ERK/JNK signaling. *Oncogene.* 2016;35(34):4495-4508.
- Janeczek AH, Van Alten PJ, Reyes HM, Walter RJ. Modulation of the cytoskeleton and intracellular calcium in leukocytes exhibiting a cancer-associated chemotaxis defect. *J Leukoc Biol.* 1993;54(4):351-359.
- Jiang L, Wen J, Luo W. Rho-associated kinase inhibitor, Y-27632, inhibits the invasion and proliferation of T24 and 5367 bladder cancer cells. *Mol Med Res.* 2015;12(5):7526-7530.
- Zou DB, Wei X, Hu RL, et al. Melatonin inhibits the Migration of Colon Cancer RKO cells by Down-regulating Myosin Light Chain Kinase Expression through Cross-talk with p38 MAPK. *Asian Pac J Cancer Prev.* 2015;16(14):5835-5842.
- Jiang F, Zhou JY, Zhang D, Liu MH, Chen YG. Artesunate induces apoptosis and autophagy in HCT116 colon cancer cells, and autophagy inhibition enhances the artesunate-induced apoptosis. *Int J Mol Med.* 2018;42(3):1295-1304.
- Song P, Li Y, Dong Y, et al. Estrogen receptor β inhibits breast cancer cells migration and invasion through CLDN6-mediated autophagy. *J Exp Clin Cancer Res.* 2019;38(1):354.
- Xie C, Zhou X, Liang C, et al. Apatinib triggers autophagic and apoptotic cell death via VEGFR2/STAT3/PD-L1 and ROS/Nrf2/p62 signaling in lung cancer. *J Exp Clin Cancer Res.* 2021;40(1):266.
- Fan J, Ren D, Wang J, et al. Bruceine D induces lung cancer cell apoptosis and autophagy via the ROS/MAPK signaling pathway in vitro and in vivo. *Cell Death Dis.* 2020;11(2):126.
- Pan H, Wang Y, Na K, et al. Autophagic flux disruption contributes to *Ganoderma lucidum* polysaccharide-induced apoptosis in human colorectal cancer cells via MAPK/ERK activation. *Cell Death Dis.* 2019;10(6):456.
- Kocaturk NM, Akkoc Y, Kig C, Bayraktar O, Gozuacik D, Kutlu O. Autophagy as a molecular target for cancer treatment. *Eur J Pharm Sci.* 2019;134:116-137.
- Rybstein MD, Bravo-San Pedro JM, Kroemer G, Galluzzi L. The autophagic network and cancer. *Nat Cell Biol.* 2018;20(3):243-251.
- Ma Z, Lou S, Jiang Z. PHLDA2 regulates EMT and autophagy in colorectal cancer via the PI3K/AKT signaling pathway. *Aging (Albany NY).* 2020;12(9):7985-8000.
- Xu F, Li Q, Wang Z, Cao X. Sinomenine inhibits proliferation, migration, invasion and promotes apoptosis of prostate cancer cells by regulation of miR-23a. *Biomed Pharmacother.* 2019;112:108592.
- Zhou Q, Wu X, Wang X, et al. The reciprocal interaction between tumor cells and activated fibroblasts mediated by TNF- α /IL-33/ST2L signaling promotes gastric cancer metastasis. *Oncogene.* 2020;39(7):1414-1428.
- Riihimäki M, Hemminki A, Sundquist K, Sundquist J, Hemminki K. Metastatic spread in patients with gastric cancer. *Oncotarget.* 2016;7(32):52307-52316.
- Xiang Z, Li J, Song S, et al. A positive feedback between IDO1 metabolite and COL12A1 via MAPK pathway to promote gastric cancer metastasis. *J Exp Clin Cancer Res.* 2019;38(1):314.
- Na S, Cui H, Guo Z, et al. Overexpression of Mena is associated with tumor progression and poor prognosis in oral squamous cell carcinoma via EMT. *Front Oncol.* 2022;12:1052375.
- Mahlberg R, Lorenzen S, Thuss-Patience P, Heinemann V, Pfeiffer P, Möhler M. New Perspectives in the Treatment of Advanced Gastric Cancer: S-1 as a Novel Oral 5-FU Therapy in Combination with Cisplatin. *Chemotherapy.* 2017;62(1):62-70.
- Liu D, Shi K, Fu M, Chen F. Melatonin indirectly decreases gastric cancer cell proliferation and invasion via effects on cancer-associated fibroblasts. *Life Sci.* 2021;277:119497.
- Elmahallawy EK, Mohamed Y, Abdo W, Yanai T. Melatonin and Mesenchymal Stem Cells as a Key for Functional Integrity for Liver Cancer Treatment. *Int J Mol Sci.* 2020;21(12):4521.
- Wang SW, Tai HC, Tang CH, et al. Melatonin impedes prostate cancer metastasis by suppressing MMP-13 expression. *J Cell Physiol.* 2021;236(5):3979-3990.
- Gao Y, Xiao X, Zhang C, et al. Melatonin synergizes the chemotherapeutic effect of 5-fluorouracil in colon cancer by suppressing PI3K/AKT and NF- κ B/iNOS signaling pathways. *J Pineal Res.* 2017;62(2):10.
- Shen YQ, Guerra-Librero A, Fernandez-Gil BI, et al. Combination of melatonin and rapamycin for head and neck cancer therapy: Suppression of AKT/mTOR pathway activation, and activation of mitophagy and apoptosis via mitochondrial function regulation. *J Pineal Res.* 2018;64(3):10.
- Ávila-Rodríguez D, Solano Agama C, González-Pozos S, et al. The shift in GH3 cell shape and cell motility is dependent on MLCK and ROCK. *Exp Cell Res.* 2017;354(1):1-17.
- hen Z, Liu S, Xia Y, Wu K. MiR-31 Regulates Rho-Associated Kinase-Myosin Light Chain (ROCK-MLC) Pathway and Inhibits Gastric Cancer Invasion: Roles of RhoA. *Med Sci Monit.* 2016;22:4679-4691.
- Li HS, Lin Q, Wu J, et al. Myosin regulatory light chain phosphorylation is associated with leiomyosarcoma development. *Biomed Pharmacother.* 2017;92:810-818.
- Kondratskiy A, Yassine M, Slomianny C, et al. Identification of ML-9 as a lysosomotropic agent targeting autophagy and cell death. *Cell Death Dis.* 2014;5(4):e1193.
- Wang J, Zhang C, Li C, et al. MicroRNA-92a promotes vascular smooth muscle cell proliferation and migration through the ROCK/MLCK signalling pathway. *J Cell Mol Med.* 2019;23(5):3696-3710.
- Zhou H, Yuan M, Yu Q, Zhou X, Min W, Gao D. Autophagy regulation and its role in gastric cancer and colorectal cancer. *Cancer Biomark.* 2016;17(1):1-10.
- Cao Y, Luo Y, Zou J, et al. Autophagy and its role in gastric cancer. *Clin Chim Acta.* 2019;489:10-20.
- Ravanan P, Srikumar IF, Talwar P. Autophagy: The spotlight for cellular stress responses. *Life Sci.* 2017;188:53-67.
- Hu H, Feng Z, Lin H, et al. Gene function and cell surface protein association analysis based on single-cell multiomics data. *Comput Biol Med.* 2023;157:106733.

57. Wang W, Zhang L, Sun J, Zhao Q, Shuai J. Predicting the potential human lncRNA-miRNA interactions based on graph convolution network with conditional random field. *Brief Bioinform.* 2022;23(6):bbac463.
58. Zhang L, Yang P, Feng H, Zhao Q, Liu H. Using Network Distance Analysis to Predict lncRNA-miRNA Interactions. *Interdiscip Sci.* 2021;13(3):535-545.
59. Sun F, Sun J, Zhao Q. A deep learning method for predicting metabolite-disease associations via graph neural network. *Brief Bioinform.* 2022;23(4):bbac266.
60. Wang T, Sun J, Zhao Q. Investigating cardiotoxicity related with hERG channel blockers using molecular fingerprints and graph attention mechanism. *Comput Biol Med.* 2023;153:106464.
61. Liu H, Ren G, Chen H, et al. Predicting lncRNA-miRNA interactions based on logistic matrix factorization with neighborhood regularized[J]. *Knowledge-Based Systems.* 2020;191(C).