

RESEARCH

Open Access



Interplay between *ESR1/PIK3CA* codon variants, oncogenic pathway alterations and clinical phenotype in patients with metastatic breast cancer (MBC): comprehensive circulating tumor DNA (ctDNA) analysis

Lorenzo Gerratana¹, Andrew A. Davis², Marko Velimirovic^{3,4}, Katherine Clifton², Whitney L. Hensing², Ami N. Shah⁵, Charles S. Dai^{3,4}, Carolina Reduzzi⁶, Paolo D'Amico⁵, Firas Wehbe⁵, Arielle Medford^{3,4}, Seth A. Wander^{3,4}, William J. Gradishar⁵, Amir Behdad⁵, Fabio Puglisi^{1,7}, Cynthia X. Ma², Aditya Bardia^{3,4} and Massimo Cristofanilli^{6*}

Abstract

Background although being central for the biology and druggability of hormone-receptor positive, HER2 negative metastatic breast cancer (MBC), *ESR1* and *PIK3CA* mutations are simplistically dichotomized as mutated or wild type in current clinical practice.

Methods The study analyzed a multi-institutional cohort comprising 703 patients with luminal-like MBC characterized for circulating tumor DNA through next generation sequencing (NGS). Pathway classification was defined based on previous work (i.e., RTK, RAS, RAF, MEK, NRF2, ER, WNT, MYC, P53, cell cycle, notch, PI3K). Single nucleotide variations (SNVs) were annotated for their oncogenicity through OncoKB. Only pathogenic variants were included in the models. Associations among clinical characteristics, pathway classification, and *ESR1/PIK3CA* codon variants were explored.

Results The results showed a differential pattern of associations for *ESR1* and *PIK3CA* codon variants in terms of co-occurring pathway alterations patterns of metastatic dissemination, and prognosis. *ESR1* 537 was associated with SNVs in the ER and RAF pathways, CNVs in the MYC pathway and bone metastases, while *ESR1* 538 with SNVs in the cell cycle pathway and liver metastases. *PIK3CA* 1047 and 542 were associated with CNVs in the PI3K pathway and with bone metastases.

Conclusions The study demonstrated how *ESR1* and *PIK3CA* codon variants, together with alterations in specific oncogenic pathways, can differentially impact the biology and clinical phenotype of luminal-like MBC. As novel endocrine therapy agents such as selective estrogen receptor degraders (SERDS) and PI3K inhibitors are being developed,

*Correspondence:

Massimo Cristofanilli
mac9795@med.cornell.edu

Full list of author information is available at the end of the article



© The Author(s) 2023. **Open Access** This article is licensed under a Creative Commons Attribution 4.0 International License, which permits use, sharing, adaptation, distribution and reproduction in any medium or format, as long as you give appropriate credit to the original author(s) and the source, provide a link to the Creative Commons licence, and indicate if changes were made. The images or other third party material in this article are included in the article's Creative Commons licence, unless indicated otherwise in a credit line to the material. If material is not included in the article's Creative Commons licence and your intended use is not permitted by statutory regulation or exceeds the permitted use, you will need to obtain permission directly from the copyright holder. To view a copy of this licence, visit <http://creativecommons.org/licenses/by/4.0/>. The Creative Commons Public Domain Dedication waiver (<http://creativecommons.org/publicdomain/zero/1.0/>) applies to the data made available in this article, unless otherwise stated in a credit line to the data.

these results highlight the pivotal role of ctDNA NGS to describe tumor evolution and optimize clinical decision making.

Keywords Circulating biomarker, Endocrine therapy, Next generation sequencing

Background

Metastatic breast cancer (MBC) is a treatable yet virtually incurable disease, and most deaths from breast cancer occur due to metastasis. [1, 2]. MBC often evolves via acquisition of new resistant mutations usually under the pressure of anticancer treatments. *ESR1* and *PIK3CA* mutations have been the most thoroughly studied and have been implicated in the biology and druggability of hormone-receptor positive (HR+), HER2-negative (HER2-) MBC, and have important implications for therapeutic selection [3, 4].

Alterations in the activity and expression of estrogen receptor α (ER) are often involved in MBC resistance and progression. Resistance may occur through loss of ER expression, increased expression of ER or related cofactors, post-translational modifications of ER, and/or delocalization of ER to the cellular membrane [5]. Alterations of genes involved in other pathways or epigenetic alterations of *ESR1* promoters can deregulate expression due to pathway crosstalk and modified ER activity [6–8]. Point mutations are the most common *ESR1* genetic alterations and generally arise in the ligand binding domain, most commonly in codons 538, 537, 380, and 536 [5, 8, 9]. In some situations, gene amplifications, deletions, or translocations resulting in fusions can occur [10–12].

PIK3CA mutations can occur both as single and multiple concomitant mutations. The frequency of multiple co-occurring *PIK3CA* mutations has been estimated to be approximately 8–13% with the vast majority being double mutations (88–96% among patients with multiple *PIK3CA* mutations) [13]. Double-*PIK3CA*-mutant breast cancer generally consists of a combination of a *major-mutant* hotspot (either E542, E545, or H1047) and a *minor-mutant* site (either E453, E726, or M1043) [13].

Liquid biopsies that include circulating tumor DNA (ctDNA), circulating tumor cells (CTCs) and exosomes are non-invasive diagnostic tools that are being explored in real-time early cancer detection, monitoring for minimal residual disease, and longitudinal tracking of clonal evolution in the peripheral blood [14, 15]. Due to their increasing sensitivity and decreasing cost, high throughput genomic technologies such as next-generation sequencing (NGS) are becoming widely available [16, 17]. Together with its longitudinal application and its increasing deployment in clinic, ctDNA has become a promising tool for the development of further insight related to MBC's biological evolution [18–20].

The aim of this retrospective study was to evaluate the interplay between oncogenic pathway alterations and *ESR1/PIK3CA* codon variants as these findings relate to their impact on the biological and clinical behavior of HR+HER2- MBC.

Materials and methods

Study population and design

This study retrospectively analyzed a multi-institutional cohort of 703 HR+HER2- MBC patients with ctDNA NGS sampling before starting a new treatment. Samples were collected from patients who underwent standard-of-care ctDNA testing at Northwestern University (Chicago, IL), Massachusetts General Hospital (Boston, MA) and Washington University in St. Louis (St. Louis, MO) between 2015 and 2020. No selection was made based on current or prior lines of therapy.

Baseline imaging was performed prior to ctDNA collection and start of therapy according to the treating physician's choice [e.g., Computed Tomography (CT), Positron Emission Tomography (PET)]. Sites of metastasis were categorized based on the presence of specific organ involvement (e.g., liver involvement, yes vs. no) independently from other metastatic sites.

ctDNA sample collection and analysis

Two 10-mL samples of whole blood were collected for each patient using standard stabilizing tubes (Streck, NE) at baseline before treatment start. Samples were analyzed using the commercial Guardant360™ NGS platform (Guardant Health, CA), a 72-gene panel based on single-molecule digital sequencing was utilized to detect somatic single nucleotide variants (SNVs), insertions/deletions (indels), gene fusions/rearrangements and copy number variations (CNVs) [21–23]. Mutations were annotated through the OncoKB database according to their effect (loss of function, gain of function) and pathogenicity [24]. Only pathogenic mutations based on OncoKB were included in the logistic and Cox regression models.

Pathway classification was based on previously defined profiles generated on the Cancer Genome Atlas database (i.e., RTK, RAS, RAF, MEK, NRF2, ER, WNT, MYC, P53, cell cycle, Notch, PI3K) [25]. *ESR1* and *PIK3CA* SNVs were analyzed at a codon variant level.

Mutant allele frequency was analyzed both for each *ESR1* and *PIK3CA* codon variant (codon MAF) and

based on the highest frequency across all mutated gene detected in the patient's blood sample (Overall MAF). CNVs were dichotically considered as present/absent.

Statistical analysis

Clinical and pathologic variables were reported using descriptive analyses. Categorical variables were reported as frequency distributions, whereas continuous variables were described through median and interquartile ranges (IQRs).

Associations between clinical characteristics, pathway classification, and *ESR1/PIK3CA* codon variants were explored through uni- and multivariable logistic regression, inclusive of odds ratio (OR) and 95% confidence interval (95% CI) computation.

Overall survival (OS) was defined as the time from the baseline ctDNA blood draw to death from any cause. Patients without an end point event at the last follow-up visit were censored. Differences in survival were tested by log-rank test and uni- and multivariable Cox regression with 95% CI and represented by Kaplan–Meier estimator plot. Correction for significant clinical variables after univariable testing was applied to the multivariable model (i.e., previous treatment with CDK4/6i, number of lines, lung, liver, bone, and soft tissue involvement).

Statistical analysis was conducted using StataCorp 2019 Stata Statistical Software: Release 16.1 (College Station, TX), R (version 4.1.0; The R foundation for Statistical Computing, Vienna, Austria) and JMP (version 16; SAS Institute, Cary, NC).

Results

Cohort characteristics and detected gene alterations

The cohort included 703 patients diagnosed with HR+HER2– MBC. In detail, the study included 509 patients (85%) with invasive ductal carcinoma (IDC) and 93 patients (15%) with invasive lobular carcinoma (ILC) (Table 1). The most common metastatic site was bone (548 patients, 78%), followed by liver (290 patients, 41%), lymph nodes (262 patients, 37.3%) and lung (221 patients, 31.5%) (Table 1).

Endocrine therapy (ET) was the most common previous treatment (452 patients, 74%), CDK4/6 inhibitors were the most frequent targeted therapy (322 patients, 52.8%), followed by mTOR inhibitors (105 patients, 17.2%) and PI3K inhibitors (38 patients, 6.2%) (Table 1).

Across the tested genes, *PIK3CA*, *TP53* and *ESR1* were the most altered. As expected, the most likely effect of the detected SNVs was gain of function (GOF) for *PIK3CA* and *ESR1* and loss of function (LOF) for *TP53* (Fig. 1A, B).

SNVs alterations were mainly observed in the PI3K (35%), P53 (32%), ER (28%), RAS (8%), RTK (7%) and

Table 1 Clinicopathologic characteristics of the luminal-like MBC cohort.

Characteristics	No	%
BC histological type		
NST	509	84.55
Lobular	93	15.45
BC IHC characteristics		
ER+	697	99.15
PR+	464	66.67
HER2+	0	0
Metastatic involvement		
Bone	548	78.06
Liver	290	41.31
Lymph nodes	262	37.32
Lung	221	31.48
Soft tissue	125	17.81
CNS	46	6.55
Previous treatments		
ET	452	74.10
CT	257	42.13
CDK4/6 inhibitors	322	52.79
mTOR inhibitors	105	17.21
PI3K inhibitors	38	6.23
Immunotherapy	8	1.31

NST (Non-Special Type), CNS (Central Nervous System), ET (Endocrine Therapy), CT (Chemotherapy)

cell cycle (5%) pathways. Copy number variations (CNVs) were mostly detected in the RTK (20%), cell cycle (15%), MYC (7%) PI3K (8%) and RAF (6%) pathways (Fig. 1B).

ESR1 mutations were detected in 166 patients (24%) and *PIK3CA* in 214 patients (30.5%) (Additional file 1: Table S1). The most common *ESR1* pathogenic mutations among *ESR1*-mutated patients were found in codons 537 (52 patients, 31%), 538 (34 patients, 20%), 536 (14 patients, 8%) and 380 (12 patients, 7%) (Fig. 1C, Additional file 1: Table S1). The most common *PIK3CA* codon variants were 1047 (68 patients, 32%), 545 (47 patients, 22%), and 542 (38 patients, 18%) (Fig. 1D, Additional file 1: Table S1).

Other pathogenic *PIK3CA* SNVs were observed in 28.5% (N=61) of patients, 16.82% (N=36) had more than one *PIK3CA* SNV. Among patients with *ESR1* mutations, 33% (N=54) had polyclonal alterations (Additional file 1: Table S1).

The top 10 genes were CNVs were detected were *FGFR1* (12.1%), *MYC* (9.1%), *CCND1* (8.8%), *PIK3CA* (8.3%), *EGFR* (6.8%), *BRAF* (3.8%), *CDK6* (3.4%), *RAF1* (3.3%), *CCNE1* (3.3%) and *KRAS* (3.1%) (Additional file 1: Table S2).

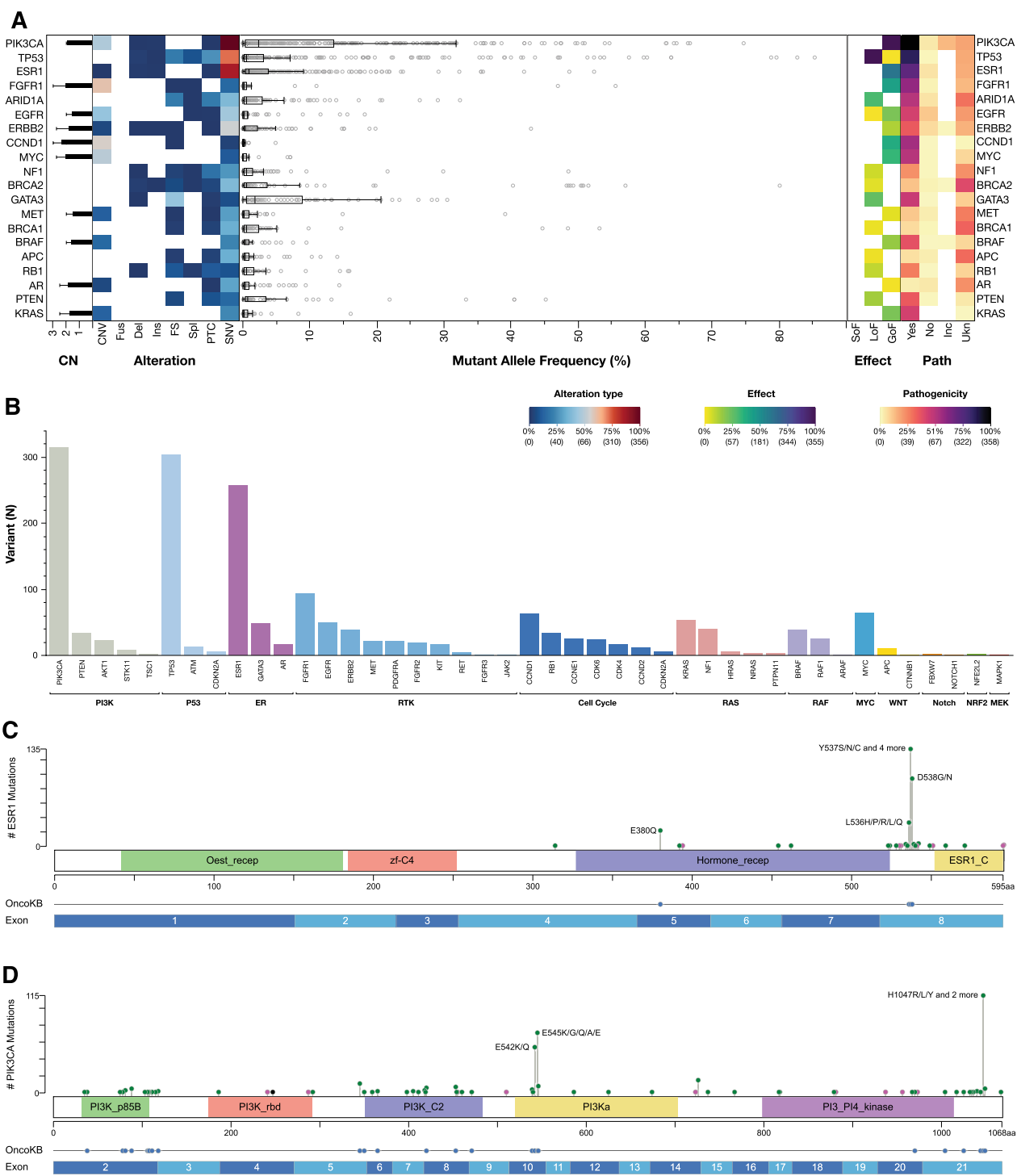


Fig. 1 Landscape plot of all detectable aberrations in ctDNA samples. **A** Incidence of the single aberrations [copy number variations (CNV), Fusions (Fus), deletions (Del), insertions (Ins), frameshift (FS), splicing variants (Spl), premature termination codons (PTC) and single nucleotide variation (SNV)] is represented on the left. The mutant allele frequency (MAF) of each mutation is shown in the middle. Effect [gain of function (GOF), loss of function (LOF) and switch of function (SOF)] and pathogenicity [yes, no, unknown (Ukn) and inconclusive (Inc)] of all the detected aberrations are shown on the right. Histogram representing different frequency distribution of gene mutations across oncogenic pathways **(B)**. Lollipop plot showing the distribution of ESR1 **(C)** and PIK3CA **(D)** mutations by their amino acid coordinates across ER and PI3K domains and across ESR1 and PIK3CA exon sequences. Oncogenic mutations are highlighted

ESR1 and PIK3CA codon variants are associated with different ctDNA alterations across oncogenic pathways

Specific codon MAF was tested across *PIK3CA* and *ESR1* variants (Fig. 2). No significant differences were observed for *ESR1* (Additional file 1: Fig. S1A). *PIK3CA* codon variants, in contrast, showed a statistically significant difference ($P < 0.0001$) (Additional file 1: Fig. S1B) with *PIK3CA* 1047 and 542 showing the highest codon MAF (Additional file 1: Fig. S1B).

The association between the main *ESR1* and *PIK3CA* codon variants (Fig. 1C, D) and concomitant gene alterations was investigated according to oncogenic pathway classification.

After multivariable logistic regression, *PIK3CA* 1047 was significantly associated with SNVs in the P53 pathway and CNVs in the PI3K (respectively OR 1.96, 95%CI 1.13–3.39 $P = 0.016$ and OR 3.25, 95%CI 1.36–7.75 $P = 0.008$) (Fig. 2, Additional file 1: Table S3).

PIK3CA 542 was significantly associated with CNVs in the PI3K pathway, SNVs in the RTK and the RAS pathways (respectively OR 3.18, 95%CI 1.15–8.76 $P = 0.025$ and OR 3.87, 95%CI 1.36–10.98 $P = 0.011$, OR 3.01, 95%CI 1.03–8.77 $P = 0.044$) (Fig. 2, Additional file 1: Table S3).

PIK3CA 545 was significantly associated with SNVs in the P53 pathway (OR 2.96, 95%CI 1.54–5.66 $P = 0.001$) (Fig. 2, Additional file 1: Table S3).

ESR1 537 was significantly associated with SNVs in the ER pathway, CNVs in the MYC pathway and SNVs in the RAF pathway (respectively OR 3.00, 95%CI 1.25–7.17 $P = 0.014$ and OR 2.74, 95%CI 1.20–6.23 $P = 0.017$, OR

5.08, 95%CI 1.15–22.40 $P = 0.032$) (Fig. 2, Additional file 1: Table S3).

ESR1 538 was significantly associated with SNVs in the cell cycle pathway (OR 5.27, 95%CI 1.82–15.30 $P = 0.002$) (Fig. 2, Additional file 1: Table S3).

No concomitant alterations were confirmed after multivariable analysis for *ESR1* 380, although a numerical difference was highlighted for SNVs in the P53 pathway (Fig. 2, Additional file 1: Table S3).

No associations were observed for *ESR1* 536.

Alterations in oncogenic pathways and ESR1 / PIK3CA codon variants are differentially associated with sites of metastasis

The association between *ESR1/PIK3CA* codon variants and alterations in oncogenic pathways were then investigated across the main metastatic sites. Correction for number of lines was applied.

After multivariable logistic regression, *ESR1* 537 alterations were significantly associated with bone and lung involvement (respectively OR 3.15, 95%CI 1.08–9.23, $P = 0.036$, OR 1.89, 95%CI 1.01–3.52, $P = 0.046$), while *ESR1* 538 alterations were associated with liver metastases only (OR 3.06, 95%CI 1.29–7.29 $P = 0.012$) (Fig. 3, Additional file 1: Table S4).

PIK3CA 1047 alterations were associated with bone metastases (OR 2.68, 95%CI: 1.02–7.05, $P = 0.046$) (Fig. 3, Additional file 1: Table S4). *PIK3CA* 542 alterations were associated with soft tissue and lymph nodes (respectively OR 2.56, 95%CI: 1.14–5.74, $P = 0.022$ and OR 2.32, 95% CI 1.15–4.68, $P = 0.018$) (Fig. 3, Additional file 1: Table S4). *PIK3CA* 545 alterations were associated

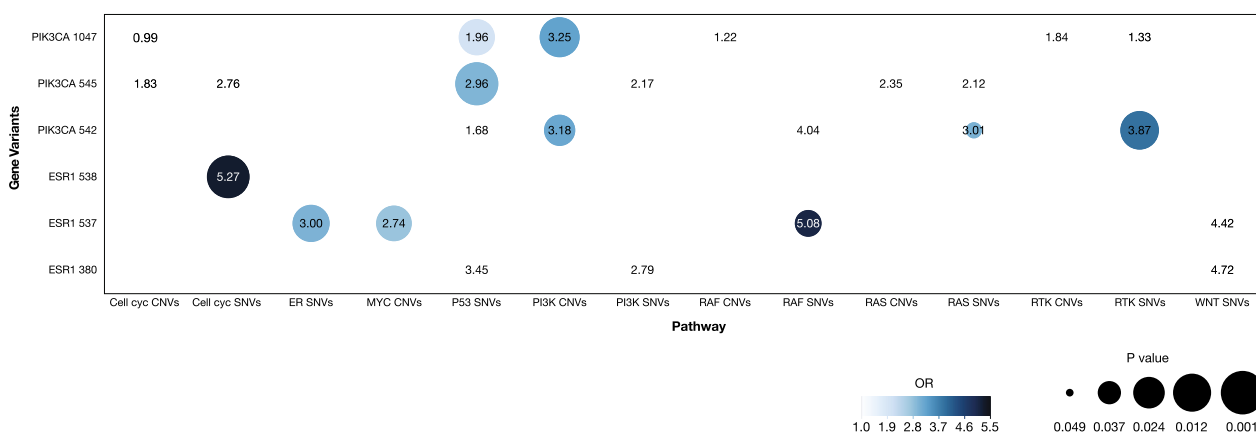


Fig. 2 Heat-map showing the association of the main *ESR1* and *PIK3CA* codon variants with concomitant ctDNA alterations in other oncogenic pathways. *PIK3CA* 1047 was associated with SNVs in the P53 pathway and CNVs in the PI3K, while *PIK3CA* 542 with CNVs in the PI3K pathway, SNVs in the RTK and SNVs in the RAS and *PIK3CA* 545 with SNVs in the P53 pathway. *ESR1* 537 was associated with SNVs in the ER pathway, CNVs in the MYC and SNVs in the RAF, *ESR1* 538 with SNVs in cell cycle pathway. Color intensity was proportional to Odds Ratio, while P value was described by size (the lower the P value, the bigger the circle). Syn, Synonymous; Ukn, Unknown; CNVs, Copy Number Variations; SNVs, Single Nucleotide Variations

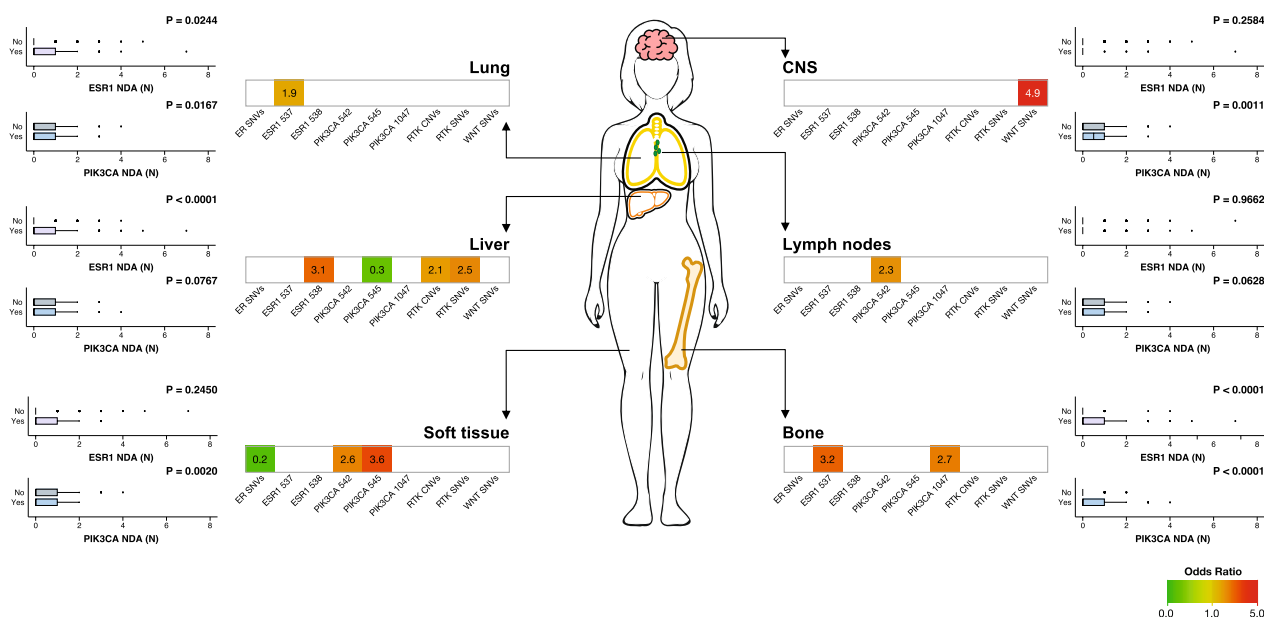


Fig. 3 Association of ESR1 and PIK3CA codon variants and alterations in oncogenic pathways with different involvement of the main metastatic sites (lung, liver, soft tissue, CNS, lymph nodes and bone). The number of concomitant detected aberrations (NDA) of ESR1 and PIK3CA across different metastatic sites was represented next to each metastatic site

with soft tissue involvement (OR 3.6, 95%CI 1.76–7.35, $P < 0.001$) and less associated with liver metastases (OR 0.3, 95%CI 0.13–0.72, $P = 0.007$) (Fig. 3, Additional file 1: Table S4).

SNVs and CNVs in the RTK pathway were significantly associated with liver metastases (respectively OR 2.47, 95%CI: 1.04–5.85, $P = 0.04$ and OR 2.12, 95% CI 1.15–3.94, $P = 0.017$) (Fig. 3, Additional file 1: Table S4). SNVs in the WNT pathway were associated with CNS metastases (OR 4.91, 95% CI 1.17–20.54, $P = 0.029$) (Fig. 3, Additional file 1: Table S4). SNVs in the ER pathway were less represented in patients with soft tissue involvement (OR 0.2, 95% CI: 0.05–0.86, $P = 0.03$) (Fig. 3, Additional file 1: Table S4).

The number of concomitant ESR1 and PIK3CA mutations was then analyzed across metastatic sites.

Patients with lung, liver and bone metastases had a significantly higher number of ESR1 mutations (respectively $P = 0.0244$, $P < 0.0001$ and $P < 0.0001$) (Fig. 3), while PIK3CA mutations were significantly higher in patients with lung, CNS, and bone metastases (respectively $P = 0.0167$, $P = 0.0011$ and $P < 0.0001$) and significantly lower in patients with soft tissue involvement ($P = 0.0020$) (Fig. 3).

ESR1 mutations impact on overall survival together with alterations in PI3K, MYC, RAS and P53 pathways

The prognostic impact of ESR1 and PIK3CA codon variants and number of concomitant mutations was

investigated in terms of OS (Fig. 4). Although the detection of ESR1 or PIK3CA mutations had a significantly unfavourable impact on OS (respectively $P < 0.0001$ and $P = 0.0410$) (Fig. 4A, B), no differential impact was observed across codon variants ($P = 0.3108$ and $P = 0.3450$) (Fig. 4A, B) or the number of concomitant ESR1 or PIK3CA SNVs ($P = 0.9414$ and $P = 0.1301$) (Fig. 4C, D). Similar results were observed for patients previously treated with CDK4/6i both for the overall impact of the ESR1 and PIK3CA mutational status (respectively $P = 0.0310$ and $P = 0.0009$) and multiple concomitant SNVs (respectively $P = 0.8074$ and $P = 0.3443$) (Fig. 4E, F). On the other hand, in patients not previously exposed to CDK4/6i only ESR1 had a significant impact on OS ($P = 0.0206$) (Fig. 4G, H).

Similar results were observed in terms of PFS in patients treated with endocrine therapy (Additional file 1: Fig. S2A–D), apart from a numerical difference according to number of PIK3CA alterations within patients with PIK3CA-mutated MBC ($P = 0.0753$) (Additional file 1: Fig. S2D).

After multivariable analysis corrected for previous treatment with CDK4/6i, number of lines, lung, liver, bone, and soft tissue involvement, the prognostic impact of ESR1 380 was confirmed (HR 2.48, 95%CI 1.01–6.07, $P < 0.048$), together with RAS pathway SNVs (HR 1.96, 95%CI 1.16–3.33, $P = 0.013$), P53 pathway SNVs (HR 1.38, 95%CI 1.17–3.17, $P = 0.034$), MYC pathway CNVs (HR 1.91, 95%CI 1.08–3.38, $P = 0.027$), and PI3K CNVs

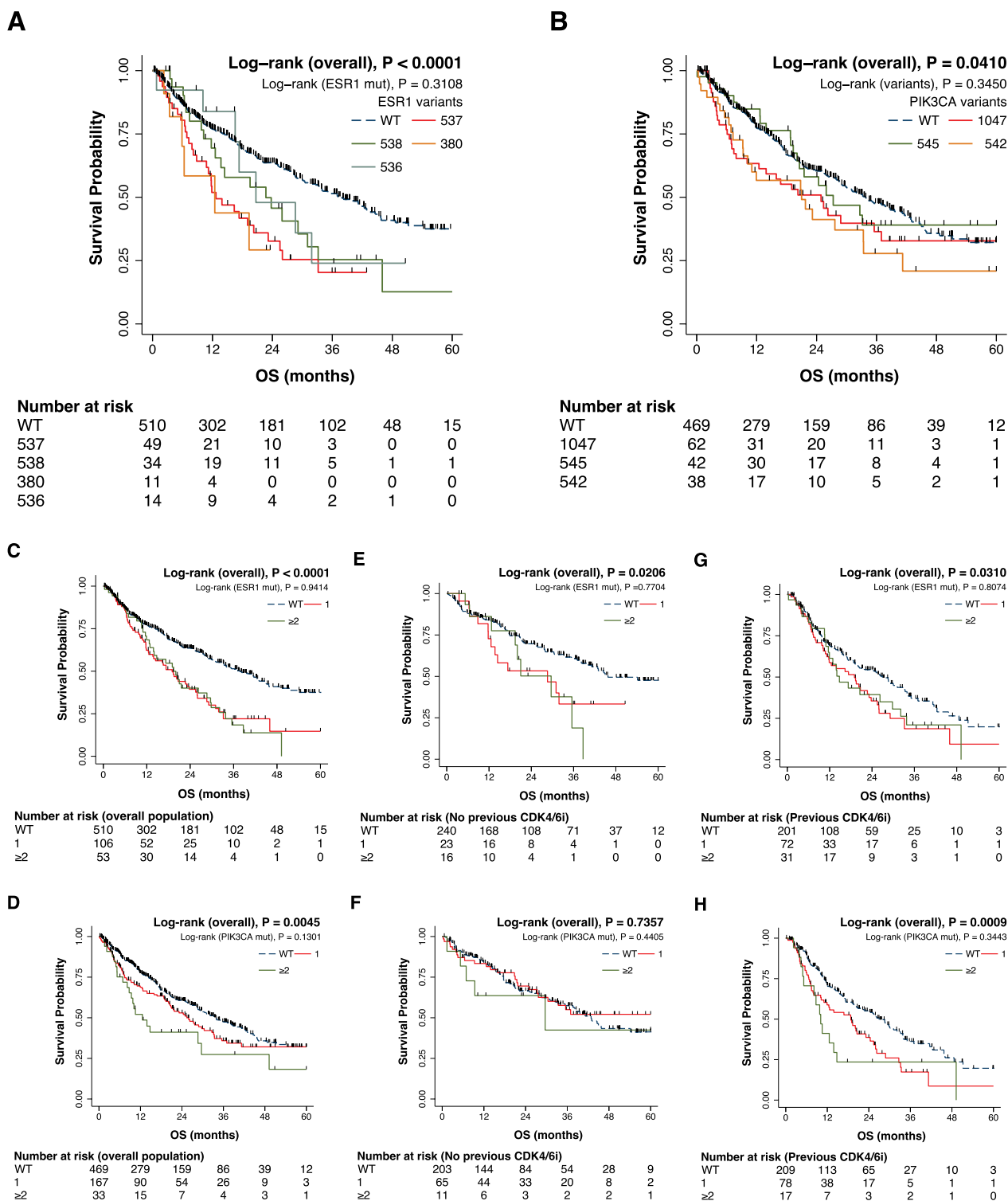


Fig. 4 Kaplan–Meier plots for the impact on overall survival (OS) of ESR1 and PIK3CA mutations. The detection of ESR1 or PIK3CA mutations had a significantly unfavorable impact on OS, however, no differential impact was observed across ESR1 or PIK3CA codon variants (A, B). Similarly, no differential prognostic impact was observed between number of concomitant ESR1 or PIK3CA alterations in the overall population (C, D) and according to previous CDK4/6i exposure (E–H). CNVs, Copy Number Variations; SNVs, Single Nucleotide Variations

(HR 2.27, 95%CI 1.16–4.47, $P=0.017$) (Table 2). Number of lines, liver, bone and soft tissue involvement had an independent impact in terms of OS (Table 2).

Discussion

Although pivotal in breast cancer biology and evolution, *ESR1* and *PIK3CA* mutations clinically are simplistically dichotomized as mutated or wild type. On the other hand, preclinical data suggests that a more precise characterization of *ESR1* and *PIK3CA* mutated variants may help improve our understanding of how these alterations and associated co-mutations drive resistance and clonal evolution [13, 26–28]. In this study we retrospectively analyzed ctDNA samples from a cohort of 703 patients to more specifically investigate the role of *ESR1* and *PIK3CA* codon variants and other oncogenic pathway alterations and their impact on the clinical phenotype of HR+HER2– MBC.

Similar to previous studies, alterations in *ESR1* and *PIK3CA* were commonly observed in our cohort [29–32]. We investigated differences in clinical phenotypes based on specific codon variants for each of these genes, together with other gene alterations on a pathway level. This approach enabled us to detect potential associations from a biological standpoint that would have been otherwise diluted by the low incidence of the single gene alterations within different pathways. Our results showed a differential pattern of associations for *ESR1* and *PIK3CA* codon variants in terms of co-occurring pathway alterations patterns of metastatic dissemination, and prognosis.

The association among *ESR1*, *PIK3CA* codon variants, and gene alterations was then explored according to oncogenic pathways classification.

PIK3CA 1047 and 542 were associated with CNVs in the PI3K pathway. Co-occurring SNVs in the PI3K pathway are well documented and are often associated with exceptional responses. On the other hand, *PIK3CA* CNVs are less well described, since clinical trials focused on PI3K inhibitors are usually focused on PCR-based diagnostic companions and therefore typically report *PIK3CA* mutations but not *PIK3CA* CNVs. Our data suggest the need for a more specific characterization since patients with co-occurring SNVs and CNVs could have different patterns of response [33].

ESR1 537 was significantly associated with SNVs in the ER and RAF pathways and CNVs in the MYC pathway, while *ESR1* 538 was associated with SNVs in the cell cycle pathway. The selection of such co-occurring alterations could be the result of prior exposure to ET, suggesting that endocrine resistance may be an emerging property of cellular-wide genetic, epigenetic, and transcriptional phenomena, rather than the result of a single

Table 2 Association of *ESR1* and *PIK3CA* codon variants and alterations in oncogenic pathways with overall survival (OS).

	HR	95% C.I.	P value	
ESR1 variants				
Wild type	1			
537	1.08	0.68	1.71	0.7594
538	0.77	0.46	1.32	0.3446
380	2.48	1.01	6.07	0.0476
536	1.06	0.41	2.74	0.9071
PIK3CA variants				
Wild type	1			
1047	0.97	0.6	1.55	0.8871
545	0.61	0.34	1.08	0.089
542	1.12	0.65	1.91	0.6849
RAS pathway SNVs				
Not altered	1			
Altered	1.96	1.16	3.33	0.0126
P53 pathway SNVs				
Not altered	1			
Altered	1.38	1.02	1.86	0.0341
Cell cycle pathway SNVs				
Not altered	1			
Altered	1.07	0.53	2.16	0.8576
ER pathway SNVs				
Not altered	1			
Altered	1.41	0.84	2.36	0.1948
PI3K pathway SNVs				
Not altered	1			
Altered	1.57	0.93	2.66	0.0925
RTK pathway CNVs				
Not altered	1			
Altered	1.2	0.77	1.86	0.4269
RAS pathway CNVs				
Not altered	1			
Altered	0.84	0.34	2.08	0.7009
RAF pathway CNVs				
Not altered	1			
Altered	0.91	0.32	2.55	0.8563
ER pathway CNVs				
Not altered	1			
Altered	0.93	0.23	3.83	0.9222
MYC pathway CNVs				
Not altered	1			
Altered	1.91	1.08	3.38	0.027
Cell cycle pathway CNVs				
Not altered	1			
Altered	1.27	0.79	2.05	0.3275
PI3K pathway CNVs				
Not altered	1			
Altered	2.27	1.16	4.47	0.0174
Lung involvement				
No	1			

Table 2 (continued)

	HR	95% C.I		P value
Yes	1.28	0.96	1.73	0.0961
Liver involvement				
No	1			
Yes	1.84	1.36	2.5	0.0001
Bone involvement				
No	1			
Yes	1.66	1.13	2.43	0.0093
Soft tissue involvement				
No	1			
Yes	2.01	1.41	2.85	0.0001
Previous CDK4/6i				
No	1			
Yes	1.14	0.82	1.58	0.4464
Treatment line				
First	1			
Second	2.24	1.39	3.63	0.001
Third	3.58	2.16	5.94	<0.0001
Fourth	2.44	1.34	4.43	0.0035
Fifth and beyond	3.52	2.18	5.68	<0.0001

CNVs, Copy Number Variations; SNVs, Single Nucleotide Variations

hit aberration [26, 34]. Multiparametric characterizations are therefore needed to better describe this phenomenon and select new therapeutic strategies that could target alterations on a pathway level [35].

It has been previously suggested that gene alterations and expression can influence the development of metastases in different sites [14, 36, 37]. Therefore, in our current study, we combined oncogenic pathways classification and codon variants to better describe how these alterations may impact site of metastasis (e.g., organotropism). Similarly to previous works, *ESR1* mutations were found to be associated with liver and bone metastases and *PIK3CA* with bone. On the other hand, when considered on a codon basis, only *ESR1* 538 was associated with liver metastases, while *ESR1* 537 and *PIK3CA* 1047 were significantly associated with bone metastases. A more complex role of *ESR1* in the biology of HR+HER2- MBC has been suggested by previous data, not only on a genetic but also on an epigenetic standpoint where liver metastases were associated with low methylation levels of the *ESR1* promoter [8, 38–41]. In addition to specific codon variants, we showed that alterations in the RTK pathway were associated with liver metastases, supporting the importance of this pathway in driving therapeutic resistance. Prior studies have shown that alterations in *ESR1*, *AKT1*, *ERBB2*, *FGFR4* and *NFI* are linked to the RTK-RAS axis in patients who develop liver metastases [38]. On one hand therapeutic targeting

of these alterations could have implications for future treatment strategies, potentially impacting specific sites of metastatic spread [42]. On the other hand, ctDNA shedding is influenced by tumor burden and may vary across metastatic sites, introducing a potential bias in the interpretation of data linked to organotropism [43].

As expected, our study confirmed the prognostic impact of alterations in *ESR1* and *PIK3CA* on OS in univariable models [44]. This significant impact on prognosis was consistent across codon variants and also in patients with polyclonal *ESR1* or *PIK3CA* mutations (Fig. 4) [13].

As new treatment options specifically targeting ER are gaining momentum, the prognostic and predictive role of *ESR1* mutations codon variants may become central in a significant number of patients with MBC [45]. In terms of oncogenic pathways, our multivariable models highlighted a significant prognostic role for RAS pathway SNVs, MYC pathway CNVs, PI3K pathway CNVs, and P53 pathway SNVs, while only *ESR1* 380 codon variant retained its prognostic impact. The prognostic impact of gene alterations according to oncogenic pathways is an emerging paradigm that has been previously explored in the translational analysis of MONALEESA 7 [20]. RTK gene alterations (defined as either SNVs and CNV in the *FGFR1*, *ERBB2*, *IGF1R*, *EGFR*, *ERBB3*, *KDR*, *KIT*, *PDGFRB*, *PDGFRA*, *ERBB4*, *VEGFA* and *IGF1* genes) were identified in 17% of patients, and similarly to our study, these patients experienced shorter PFS, especially in the ET-only arm [20]. Of note, the incidence of RTK alterations was lower in MONALEESA 7 with respect to our cohort (24%), possibly due to less exposure to prior treatments [20].

Our study has several potential limitations. First, the NGS technology used in our study was not able to define whether multiple detected mutations were concomitantly harbored by the same cell population or if they originated from different subclones. This distinction may play an important role as cis-*PIK3CA* codon variants (i.e., present on the same allele) have been observed to significantly impact treatment response and MBC biology [13]. Similarly, this limitation applies to associations between specific alterations and metastatic organotropism. If on one hand the real-world design of the study may have increased its clinical transferability, on the other it may have added potential bias due to not uniform treatment strategies across institutions, historical cohorts, and treatment lines. Moreover, timing from ctDNA and treatment start was decided on a clinical basis and not per protocol, introducing variability across patients. Finally, current clinical NGS platforms rely on targeted gene panels, potentially underestimating the tumor's mutational load and leaving out other less represented key genes across the considered oncogenic pathways.

Conclusions

ESR1 and PIK3CA codon variants, together with alterations in specific oncogenic pathways, can differentially impact the biology, and survival of patients with HR+HER2-negative metastatic breast cancer. As novel therapies such as selective estrogen receptor degraders and PI3K inhibitors are being developed and are entering clinical practice, our results highlight the pivotal role of ctDNA NGS in describing tumor evolution under treatment pressure and optimizing both clinical decision making and future drug development.

Abbreviations

95% CI	95% Confidence interval
CNVs	Copy number variations
CT	Computed Tomography
CTCs	Circulating tumor cells
ctDNA	Circulating tumor DNA
ET	Endocrine therapy
GOF	Gain of function
HER2–	HER2-negative
HR	Hazard ratio
HR+	Hormone-receptor positive
IDC	Invasive ductal carcinoma
ILC	Invasive lobular carcinoma
IQRs	Interquartile ranges
LOF	Loss of function
MAF	Mutant allele frequency
MBC	Metastatic breast cancer
NGS	Next generation sequencing
OR	Odds ratio
OS	Overall survival
PET	Positron Emission Tomography
SERDS	Selective estrogen receptor degraders
SNVs	Single nucleotide variations

Supplementary Information

The online version contains supplementary material available at <https://doi.org/10.1186/s13058-023-01718-0>.

Additional file 1. Supplementary Tables and Figures.

Acknowledgements

Not applicable.

Author contributions

Study concept and design: LG, AAD, MC. Data acquisition: AAD, KC, AJM, MV, WLH, ANS, PD. Quality control of data and algorithm: LG, AAD, KC, MV, WLH, ANS. Interpretation of data, approval and editing of the manuscript: all authors. All authors have read and approved the final version of the manuscript.

Funding

This work was supported by the Lynn Sage Cancer Research Foundation, OncoSET Precision Medicine Program, The Italian League for the Fight against Cancer (LILT) Healthcare research 2018—5 × mille program, The Italian Ministry of Health, Ricerca Corrente, The Italian Ministry of Health RF-2016-02362544, REDCap support was funded by the National Institutes of Health UL1TR001422.

Availability of data and materials

The datasets generated and analyzed during the current study are not publicly available due to data protection rules but are available from the corresponding author on reasonable request.

Declarations

Ethics approval and consent to participate

Data were combined and shared under a data use agreement and approved by the institutional review boards (IRB) of the three sites (Washington University School of Medicine St. Louis, MO; IRB#202101147, Northwestern University, Chicago, IL; IRB#STU00214133 and Massachusetts General Hospital, Boston, MA; IRB#2013P000848). The requirement for informed consent was waived by the IRB for this de-identified analysis. The study was performed in concordance with the Health Insurance Portability and Accountability Act and the Declaration of Helsinki.

Consent for publication

Not applicable.

Competing interests

L. Gerratana reports consulting or advisory role: AstraZeneca, Daiichi Sankyo, Eli Lilly, GlaxoSmithKline, Incyte, Novartis, Pfizer, Menarini Stemmline, AbbVie; research funding: Menarini Silicon Biosystems. A. A. Davis reports participating in a scientific advisory board for Pfizer, Inc. F. Puglisi Reports consulting or advisory roles from Roche, MSD, AstraZeneca, Novartis, Lilly, Pfizer, Pierre Fabre, Daiichi Sankyo, Eisai, Amgen, in addition to research funding from Eisai, AstraZeneca, Roche. C.X. Ma holds consultant or advisory roles from Novartis, Seattle Genetics, Agendia, AstraZeneca, Athenex, Bayer Health-Care Pharmaceuticals, Biovica Inc, Eisai, Olaris Inc, Philips Electronics North America, Puma Biotechnology, and SanofiGenzyme, in addition to research funding from Pfizer and Puma Biotechnology. A. Bardia reports consulting or advisory roles with Novartis, Genentech, Pfizer, Spectrum Pharmaceuticals, bioTheragnostics, Merck, Radius Health, Immunomedics, Novartis, Genentech/Roche, Radius Health, Innocrin Pharm, Sanofi, Puma Biotechnology, Daiichi Sankyo/Astra Zeneca, Foundation Medicine, Phillips Healthcare. He reports research funding from Genentech (Inst), Novartis (Inst), Pfizer (Inst), Merck (Inst), Sanofi (Inst), Radius Health (Inst), Immunomedics (Inst), Astra Zeneca/Daiichi Sankyo (Inst). M. Cristofanilli reports consulting fees from Novartis, Menarini, Eli Lilly, Sermonix, G1 Therapeutics, Foundation Medicine, Astra Zeneca, Pfizer Inc. Consulting/lecture fees from Foundation Medicine and Pfizer Inc. Travel support from Foundation Medicine. Participation on a Data Safety Monitoring Board or Advisory Board for Merck and Astra Zenca. Research funding from Pfizer Inc, Menarini, Eli Lilly, and G1 Therapeutics. The remaining authors report no conflicts of interest.

Author details

¹Department of Medical Oncology, CRO Aviano, National Cancer Institute, IRCCS, Aviano, Italy. ²Division of Oncology, Department of Medicine, Washington University School of Medicine, St. Louis, MO, USA. ³Massachusetts General Hospital, Boston, MA, USA. ⁴Harvard Medical School, Boston, MA, USA. ⁵Feinberg School of Medicine, Northwestern University, Chicago, IL, USA. ⁶Weill Cornell Medicine, 420 E 70th St, LH 204, New York, NY 10021, USA. ⁷Department of Medicine, University of Udine, Udine, Italy.

Received: 17 January 2023 Accepted: 24 September 2023

Published online: 02 October 2023

References

- Harbeck N, Penault-Llorca F, Cortes J, Gnant M, Houssami N, Poortmans P, et al. Breast Cancer. 2019. <https://doi.org/10.1038/s41572-019-0111-2>.
- Bonotto M, Gerratana L, Poletto E, Driol P, Giangreco M, Russo S, et al. Measures of outcome in metastatic breast cancer: insights from a real-world scenario. *Oncologist*. 2014;19:608–15. <https://doi.org/10.1634/theoncologist.2014-0002>.
- Criscitelli C, Marra A, Curigliano G. PIK3CA mutation assessment in HR+/HER2– metastatic breast cancer: overview for oncology clinical practice. *J Mol Pathol*. 2021;2:42–54. <https://doi.org/10.3390/jmp2010005>.
- Brett JO, Spring LM, Bardia A, Wander SA. ESR1 mutation as an emerging clinical biomarker in metastatic hormone receptor-positive breast cancer. *Breast Cancer Res*. 2021;23:85. <https://doi.org/10.1186/s13058-021-01462-3>.

5. De Santo I, McCartney A, Migliaccio I, Di Leo A, Malorni L. The emerging role of ESR1 mutations in luminal breast cancer as a prognostic and predictive biomarker of response to endocrine therapy. *Cancers (Basel)*. 2019;11:1894. <https://doi.org/10.3390/cancers11121894>.
6. de Santo I, McCartney A, Malorni L, Migliaccio I, di Leo A. The emerging role of *esr1* mutations in luminal breast cancer as a prognostic and predictive biomarker of response to endocrine therapy. *Cancers (Basel)*. 2019;11:1–15. <https://doi.org/10.3390/cancers11121894>.
7. Khatpe AS, Adebayo AK, Herodotou CA, Kumar B, Nakshatri H. Nexus between PI3K/AKT and estrogen receptor signaling in breast cancer. *Cancers (Basel)*. 2021;13:1–20. <https://doi.org/10.3390/cancers13030369>.
8. Gerratana L, Basile D, Franzoni A, Allegri L, Viotto D, Corvaja C, et al. Plasma-based longitudinal evaluation of ESR1 epigenetic status in hormone receptor-positive HER2-negative metastatic breast cancer. *Front Oncol*. 2020. <https://doi.org/10.3389/fonc.2020.550185>.
9. Rani A, Stebbing J, Giamas G, Murphy J. Endocrine resistance in hormone receptor positive breast cancer—from mechanism to therapy. *Front Endocrinol (Lausanne)*. 2019. <https://doi.org/10.3389/fendo.2019.00245>.
10. Dustin D, Gu G, Fuqua SAW. ESR1 mutations in breast cancer. *Cancer*. 2019;125:3714–28. <https://doi.org/10.1002/ncr.32345>.
11. Robinson DR, Wu YM, Vats P, Su F, Lonigro RJ, Cao X, et al. Activating ESR1 mutations in hormone-resistant metastatic breast cancer. *Nat Genet*. 2013;45:1446–51. <https://doi.org/10.1038/ng.2823>.
12. Toy W, Weir H, Razavi P, Lawson M, Goeppert AU, Mazzola AM, et al. Activating ESR1 mutations differentially affect the efficacy of ER antagonists. *Cancer Discov*. 2017;7:277–87. <https://doi.org/10.1158/2159-8290.CD-15-1523>.
13. Vasan N, Razavi P, Johnson JL, Shao H, Shah H, Antoine A, et al. Double PIK3CA mutations in cis increase oncogenicity and sensitivity to PI3Ka inhibitors. *Science*. 1979;209(366):714–23. <https://doi.org/10.1126/science.aaw9032>.
14. Gerratana L, Davis AA, Polano M, Zhang Q, Shah AN, Lin C, et al. Understanding the organ tropism of metastatic breast cancer through the combination of liquid biopsy tools. *Eur J Cancer*. 2021;143:147–57. <https://doi.org/10.1016/j.ejca.2020.11.005>.
15. Gerratana L, Basile D, Toffoletto B, Bulfoni M, Zago S, Magini A, et al. Biologically driven cut-off definition of lymphocyte ratios in metastatic breast cancer and association with exosomal subpopulations and prognosis. *Sci Rep*. 2020;10:7010. <https://doi.org/10.1038/s41598-020-63291-2>.
16. Alimirzaie S, Bagherzadeh M, Akbari MR. Liquid biopsy in breast cancer: a comprehensive review. *Clin Genet*. 2019;95:643–60. <https://doi.org/10.1111/cg.13514>.
17. Buono G, Gerratana L, Bulfoni M, Provinciali N, Basile D, Giuliano M, et al. Circulating tumor DNA analysis in breast cancer: Is it ready for prime-time? *Cancer Treat Rev*. 2019;73:73–83. <https://doi.org/10.1016/j.ctrv.2019.01.004>.
18. Gerratana L, Davis AA, Zhang Q, Basile D, Rossi G, Strickland K, et al. Longitudinal dynamics of circulating tumor cells and circulating tumor DNA for treatment monitoring in metastatic breast cancer. *JCO Precis Oncol*. 2021;943:52. <https://doi.org/10.1200/po.20.00345>.
19. Hrebien S, Citi V, Garcia-Murillas I, Cutts R, Fenwick K, Kozarewa I, et al. Early ctDNA dynamics as a surrogate for progression-free survival in advanced breast cancer in the BEECH trial. *Ann Oncol*. 2019;30:945–52. <https://doi.org/10.1093/annonc/mdz085>.
20. Bardia A, Su F, Solovieff N, Im S-A, Sohn J, Lee KS, et al. Genomic profiling of premenopausal HR+ and HER2- metastatic breast cancer by circulating tumor DNA and association of genetic alterations with therapeutic response to endocrine therapy and ribociclib. *JCO Precis Oncol*. 2021. <https://doi.org/10.1200/PO.20.00445>.
21. Lanman RB, Mortimer SA, Zill OA, Sebanovic D, Lopez R, Blau S, et al. Analytical and clinical validation of a digital sequencing panel for quantitative, highly accurate evaluation of cell-free circulating tumor DNA. *PLoS ONE*. 2015;10: e0140712. <https://doi.org/10.1371/journal.pone.0140712>.
22. Forbes SA, Beare D, Boutselakis H, Bamford S, Bindal N, Tate J, et al. COSMIC: Somatic cancer genetics at high-resolution. *Nucleic Acids Res*. 2017;45:D777–83. <https://doi.org/10.1093/nar/gkw1121>.
23. Zill OA, Banks KC, Fairclough SR, Mortimer SA, Vowles JV, Mokhtari R, et al. The landscape of actionable genomic alterations in cell-free circulating tumor DNA from 21,807 advanced cancer patients. *Clin Cancer Res*. 2018;24:3528–38. <https://doi.org/10.1158/1078-0432.CCR-17-3837>.
24. Chakravarty D, Gao J, Phillips S, Kundra R, Zhang H, Wang J, et al. OncoKB: A precision oncology knowledge base. *JCO Precis Oncol*. 2017. <https://doi.org/10.1200/po.17.00011>.
25. Sanchez-Vega F, Mina M, Armenia J, Chatila WK, Luna A, La KC, et al. Oncogenic signaling pathways in the cancer genome atlas. *Cell*. 2018;173:321–337.e10. <https://doi.org/10.1016/j.cell.2018.03.035>.
26. McDonnell DP, Norris JD, Chang C. Neomorphic ERα mutations drive progression in breast cancer and present a challenge for new drug discovery. *Cancer Cell*. 2018;33:153–5. <https://doi.org/10.1016/j.ccell.2018.01.014>.
27. Li Z, Wu Y, Yates ME, Tasdemir N, Bahreini A, Chen J, et al. Hotspot ESR1 mutations are multimodal and contextual drivers of breast cancer metastasis. *BioRxiv*. 2021. <https://doi.org/10.1101/2021.02.10.430701>.
28. Jeselsohn R, Bergholz JS, Pun M, Cornwell M, Liu W, Nardone A, et al. Allele-specific chromatin recruitment and therapeutic vulnerabilities of ESR1 activating mutations. *Cancer Cell*. 2018;33:173–186.e5. <https://doi.org/10.1016/j.ccell.2018.01.004>.
29. Jacob S, Davis AA, Gerratana L, Velimirovic M, Shah AN, Wehbe F, et al. The use of serial circulating tumor DNA to detect resistance alterations in progressive metastatic breast cancer. *Clin Cancer Res*. 2021;27:1361–70. <https://doi.org/10.1158/1078-0432.CCR-20-1566>.
30. Martínez-Sáez O, Chic N, Pascual T, Adamo B, Vidal M, González-Farré B, et al. Frequency and spectrum of PIK3CA somatic mutations in breast cancer. *Breast Cancer Res*. 2020;22:45. <https://doi.org/10.1186/s13058-020-01284-9>.
31. Tolaney SM, Toi M, Neven P, Sohn J, Grischke E-M, Llombart-Cussac A, et al. Clinical significance of PIK3CA and ESR1 mutations in circulating tumor DNA: analysis from the MONARCH 2 study of abemaciclib plus fulvestrant. *Clin Cancer Res*. 2022. <https://doi.org/10.1158/1078-0432.CCR-21-3276>.
32. Moynahan ME, Chen D, He W, Sung P, Samoila A, You D, et al. Correlation between PIK3CA mutations in cell-free DNA and everolimus efficacy in HR+, HER2- advanced breast cancer: results from BOLERO-2. *Br J Cancer*. 2017;116:726–30. <https://doi.org/10.1038/bjc.2017.25>.
33. Juric D, Janku F, Rodón J, Burris HA, Mayer IA, Schuler M, et al. Alpelisib plus fulvestrant in PIK3CA-altered and PIK3CA-wild-type estrogen receptor-positive advanced breast cancer: a phase 1b clinical trial. *JAMA Oncol*. 2019;5:e184475–e184475. <https://doi.org/10.1001/jamaoncol.2018.4475>.
34. Bulfoni M, Gerratana L, Del Ben F, Marzinotto S, Sorrentino M, Turetta M, et al. In patients with metastatic breast cancer the identification of circulating tumor cells in epithelial-to-mesenchymal transition is associated with a poor prognosis. *Breast Cancer Res*. 2016;18:30. <https://doi.org/10.1186/s13058-016-0687-3>.
35. Velimirovic M, Gerratana L, Davis AA, Hensing WL, Clifton K, Shah AN, et al. Abstract P2-07-02: Genomic predictors of rapid progression to first line endocrine and CDK4/6 inhibitor combination therapy in patients with estrogen receptor positive (ER+) HER-2 negative (HER2-) advanced breast cancer (ABC). *Cancer Res* 2022;82:P2-07-02-P2-07-02. <https://doi.org/10.1158/1538-7445.SABCS21-P2-07-02>.
36. Chen W, Hoffmann AD, Liu H, Liu X. Organotropism: new insights into molecular mechanisms of breast cancer metastasis. *NPJ Precis Oncol*. 2018;2:4. <https://doi.org/10.1038/s41698-018-0047-0>.
37. Cha S, Lee E, Won H-H. Comprehensive characterization of distinct genetic alterations in metastatic breast cancer across various metastatic sites. *NPJ Breast Cancer*. 2021;7:93. <https://doi.org/10.1038/s41523-021-00303-y>.
38. Tian C, Liu S, Wang Y, Song X. Prognosis and genomic landscape of liver metastasis in patients with breast cancer. *Front Oncol*. 2021;11:1–13. <https://doi.org/10.3389/fonc.2021.588136>.
39. Chandarlapaty S, Chen D, He W, Sung P, Samoila A, You D, et al. Prevalence of ESR1 mutations in cell-free DNA and outcomes in metastatic breast cancer: a secondary analysis of the BOLERO-2 clinical trial. *JAMA Oncol*. 2016;2:1310–5. <https://doi.org/10.1001/jamaoncol.2016.1279>.
40. Merenbakh-Lamin K, Ben-Baruch N, Yeheskel A, Dvir A, Soussan-Gutman L, Jeselsohn R, et al. D538G mutation in estrogen receptor-α: a novel mechanism for acquired endocrine resistance in breast cancer. *Cancer Res*. 2013;73:6856–64. <https://doi.org/10.1158/0008-5472.CAN-13-1197>.
41. Li Z, Wu Y, Yates ME, Tasdemir N, Bahreini A, Chen J, et al. Hotspot ESR1 mutations are multimodal and contextual modulators of breast cancer metastasis. *Cancer Res*. 2022. <https://doi.org/10.1158/0008-5472.CAN-21-2576>.

42. Morgan AJ, Giannoudis A, Palmieri C. The genomic landscape of breast cancer brain metastases: a systematic review. *Lancet Oncol.* 2021;22:e7-17. [https://doi.org/10.1016/S1470-2045\(20\)30556-8](https://doi.org/10.1016/S1470-2045(20)30556-8).
43. Davis AA, Jacob S, Gerratana L, Shah AN, Wehbe F, Katam N, et al. Landscape of circulating tumour DNA in metastatic breast cancer. *EBioMedicine.* 2020;58: 102914. <https://doi.org/10.1016/j.ebiom.2020.102914>.
44. Kaklamani VG, Richardson AL, Arteaga CL. Exploring biomarkers of phosphoinositide 3-kinase pathway activation in the treatment of hormone receptor positive, human epidermal growth receptor 2 negative advanced breast cancer. *Oncologist.* 2019;24:305–12. <https://doi.org/10.1634/theoncologist.2018-0314>.
45. Bardia A, Kaklamani V, Wilks S, Weise A, Richards D, Harb W, et al. Phase I study of elacestrant (RAD1901), a novel selective estrogen receptor degrader, in ER-positive, HER2-negative advanced breast cancer. *J Clin Oncol.* 2021;39:1360–70. <https://doi.org/10.1200/JCO.20.02272>.

Publisher's Note

Springer Nature remains neutral with regard to jurisdictional claims in published maps and institutional affiliations.

Ready to submit your research? Choose BMC and benefit from:

- fast, convenient online submission
- thorough peer review by experienced researchers in your field
- rapid publication on acceptance
- support for research data, including large and complex data types
- gold Open Access which fosters wider collaboration and increased citations
- maximum visibility for your research: over 100M website views per year

At BMC, research is always in progress.

Learn more biomedcentral.com/submissions

