



HHS Public Access

Author manuscript

Radiother Oncol. Author manuscript; available in PMC 2024 October 01.

Published in final edited form as:

Radiother Oncol. 2023 October ; 187: 109819. doi:10.1016/j.radonc.2023.109819.

Erratum to “A systematic analysis of the particle irradiation data ensemble in the key of the microdosimetric kinetic model: Should clonogenic data be used for clinical relative biological effectiveness?” [Radiother. Oncol. 185 (2023) 109730]

Daniel Suárez-García^a, Miguel Antonio Cortés-Giraldo^a, Alejandro Bertolet^{b,*}

^aDepartamento de Física Nuclear, Atómica y Molecular, Universidad de Sevilla, Sevilla, Spain

^bDepartment of Radiation Oncology, Massachusetts General Hospital and Harvard Medical School, Boston, MA, USA

The Publisher would like to point out that an error was introduced into Fig. 3 during the typesetting of this paper, whereby the error bands were cut off in a straight line at the bottom where there should have been a curve.

Fig. 3 as it should have appeared is below

The Publisher apologises for this error.

*Corresponding author at: 125 Nashua St, Suite 320, Boston, MA 02114, USA. abertoletreina@mgh.harvard.edu (A. Bertolet).

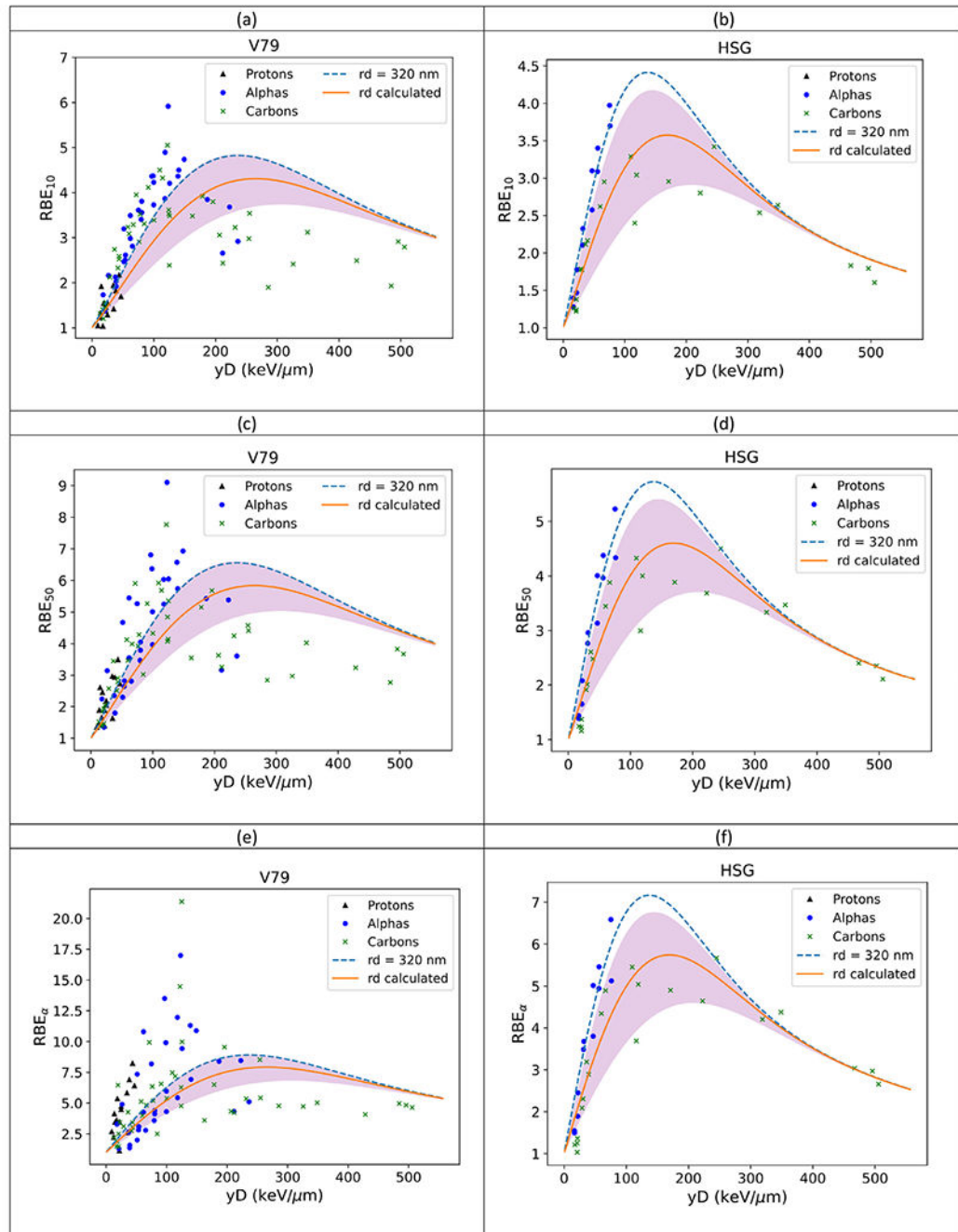


Fig. 3.

Comparison of the experimental relative biological effectiveness measured in in-vitro experiments from the PIDE database (black triangle, blue point and green cross for protons, alphas and carbons ions, respectively), calculated using the assumption $r_d = 320$ nm (blue dotted line) (see main text for details) and using r_d values calculated in this work (orange solid line), all of them as a function of y_D . Panels (a) and (b) show the RBE for the endpoint of 10% of surviving cells (RBE_{10}); panels (c) and (d) show the RBE for the endpoint of 50% of surviving cells (RBE_{50}); and panels (e) and (f) show RBE in the very low dose limit,

i.e., the quotient $RBE_{\alpha} = \alpha^*/\alpha_0$. The left panels show results for V79 cell line, and the right panels show the results for HSG cell line. The purple band over the green line show RBE calculated using the percentile 25 and percentile 75 of domain radius distribution (see Table 2). RMSE calculated for the different subplots are (a) 0.88–0.92, (b) 0.61–0.50, (c) 1.33–1.37, (d) 0.84–0.67, (e) 3.17–3.38, and (f) 1.12–0.88, for $r_d = 320$ nm and r_d calculated, respectively.