

Niti-S Esophageal Mega-Stent: An Emerging Endoscopic Tool with Different Applications in the Management of Surgical Anastomotic Leaks

Mariana Brito^{a, b} Gonçalo Nunes^{a, b} Carlos Luz^c Gabriel Oliveira^c
Pedro Pinto Marques^a Jorge Fonseca^{a, b}

^aDepartment of Gastroenterology, Hospital Garcia de Orta, Almada, Portugal; ^bPaMNEC – Grupo de Patologia Médica, Nutrição e Exercício Clínico, CiiEM, Centro de investigação interdisciplinar Egas Moniz, Monte da Caparica, Portugal; ^cDepartment of Surgery, Hospital Garcia de Orta, Almada, Portugal

Keywords

Anastomotic leak · Esophageal Mega-Stent · Esophageal stent · Endoscopy

Abstract

Introduction: Anastomotic leak (AL) is a dangerous complication in the early postoperative period after total gastrectomy or esophagectomy being associated with high mortality. Self-expandable metal stents (SEMS) play a significant role in AL management. Only one case report described the use of Mega-Stent in AL setting. The authors report a two-case series with different applications of a Niti-S esophageal Mega-Stent in AL management. **Case Report:** Case 1 is a 67-year-old male who underwent an esophagectomy due to a squamous cell carcinoma of the distal esophagus. The early postoperative period was complicated with AL and gastropleural fistula. Initially, an OTSC was deployed in the dehiscence but failed to resolve AL. The esophageal Mega-Stent was further placed in-between the esophagus and the bulb. Post-stenting contrast studies confirmed no further AL. Case 2 is an 86-year-old woman who underwent total gastrectomy with roux-en-y esophagojejunostomy due to a

gastric adenocarcinoma, complicated with AL. A partially covered metal stent (PCMS) was placed to cover the anastomosis. Computed tomography confirmed leakage persistence and a second PCMS was deployed, resolving the AL. Several weeks later, both PCMSs presented ingrowth from granulation tissue. An esophageal Mega-Stent was placed (stent-in-stent technique) and 2 weeks later, all stents were removed, with no AL recurrence. **Discussion/Conclusion:** SEMS placement for AL is a safe, well-established therapeutic technique. Limitations include stent migration and incomplete cover of large AL. Mega-Stent can be an emerging tool for endoscopic AL management.

© 2022 The Author(s).
Published by S. Karger AG, Basel

Mega-Stent esofágico Niti-S: uma ferramenta endoscópica emergente com diferentes aplicações na abordagem das deiscências anastomóticas

Palavras Chave

Deiscência anastomótica · Mega-Stent esofágico · Prótese esofágica · Endoscopia

Resumo

Introdução: A deiscência anastomótica (DA) é uma complicação grave no pós-operatório precoce da esofagectomia e gastrectomia total, pela sua elevada mortalidade. As próteses metálicas autoexpansíveis (PMAE) desempenham um papel fundamental no tratamento das DA. Na literatura, há apenas um caso descrito sobre a utilização de um *Mega-Stent* no contexto de DA, que não complicação bariátrica. Os autores reportam uma série de dois casos com diferente aplicação do *Mega-Stent* esofágico no tratamento de DA. **Descrição do caso:** Caso 1: Homem de 67 anos, submetido a esofagectomia por carcinoma epidermóide do esôfago distal. O período pós-operatório precoce foi complicado de DA com fistula gastro-pleural. Inicialmente foi colocado um *clip* OTSC no orifício da deiscência com insucesso técnico e clínico, sendo posteriormente utilizado o *Mega-Stent*, posicionado desde o esôfago até ao bulbo duodenal. Estudos contrastados posteriores confirmaram resolução da DA. Caso 2: Mulher de 86 anos, submetida a gastrectomia total com reconstrução em Y-Roux e esofagojejunoanastomose por adenocarcinoma gástrico, complicada de DA. Neste contexto foi colocada uma PMAE parcialmente coberta (PMAE-PC) sobre a área da anastomose. A tomografia computadorizada subsequente demonstrou persistência de extravasamento. Foi colocada uma segunda PMAE-PC, com posterior resolução da DA. Semanas depois, ambas as PMAE-PC apresentavam tecido de granulação nos topos, tendo sido colocado o *Mega-Stent* (técnica *stent-in-stent*) e decorridas duas semanas, todas as próteses foram facilmente extraídas, confirmando-se sucesso no tratamento da DA. **Discussão/conclusão:** A utilização de PMAE nas DA constitui uma técnica terapêutica segura e bem estabelecida, contudo passível de apresentar limitações tais como a migração ou incapacidade de cobrir totalmente DA de maiores dimensões. O *Mega-Stent* esofágico pode constituir uma ferramenta útil na terapêutica endoscópica destes doentes.

© 2022 The Author(s).
Published by S. Karger AG, Basel

Introduction

Anastomotic leaks (AL) are one of the most worrisome complications in the early postoperative period, either after a total gastrectomy or an esophagectomy [1, 2].

The AL incidence after esophagectomy ranges from 5 to 40% [3–5]; for AL post gastrectomy, several groups have reported rates of 5–7% [6, 7].

AL results in high mortality, often requiring repetitive therapeutic interventions and is associated with prolonged hospitalization [7, 8]. Early diagnosis and timely treatment are of utmost importance to avoid serious AL-related complications. However, early recognition of AL can be difficult due to the different clinical scenarios, often indistinguishable from symptoms caused by physiological postoperative inflammatory response or infection [9].

AL treatment options include conservative approach, endoscopic interventions, or surgery. The nonsurgical approach should be the initial strategy, reserving surgical reintervention for conservative measures' failure. Depending on the size and location of AL, a variety of endoscopic procedures can be selected, namely: endoscopic clips (mainly over-the-scope clips – OTSC), self-expandable metal stents (SEMS), endoscopic vacuum therapy and fibrin glue [10–12]. SEMS play a significant role in the management of these patients. There have been several reports of AL endoscopic treatment with SEMS placement [13, 14]. Only one case report described the use of an esophageal *Mega-Stent* in a patient with postesophagectomy gastropleural fistula [15]. Herein, the authors describe two examples of the utility of *Mega-Stent* in AL management.

Case Report

Case 1

A 67-year-old male was referred to the Surgery Outpatient Clinic with a 4-month history of dysphagia and weight loss. The patient was a former smoker. Other relevant past medical history included squamous cell carcinoma (SCC) of the head, surgically resected in the previous year, and colorectal cancer diagnosed 10 years before, that underwent right hemicolectomy. The upper GI endoscopy revealed a SCC of the distal esophagus. Clinical staging was cT3N3aM0, according to computed tomography (CT), endoscopic ultrasonography (EUS) and fluorodeoxyglucose positron-emission tomography (FDG-PET) findings. The patient underwent neoadjuvant chemoradiotherapy and control CT showed clinical response. Afterwards, an Ivor-Lewis esophagectomy was performed without immediate complications. Two days after the procedure, the thoracic drain poured biliary fluid. Endoscopy with fluoroscopic control was performed, confirming the suspicion of AL of the gastric staple line of the esophagogastric anastomosis (EGA). An OTSC was placed in the dehiscence orifice. The patient started total parenteral nutrition (TPN). Three days later, fever was noted and thoracic CT revealed extraluminal oral contrast from the gastric conduit to the right pleura, confirming the presence of a gastropleural fistula (Fig. 1). Repeated endoscopy identified the OTSC previously placed in situ (Fig. 2a). Immediately below the EGA, in the posterior wall of the gastric conduit, a small orifice was seen, and a fluoroscopic image confirmed extraluminal contrast

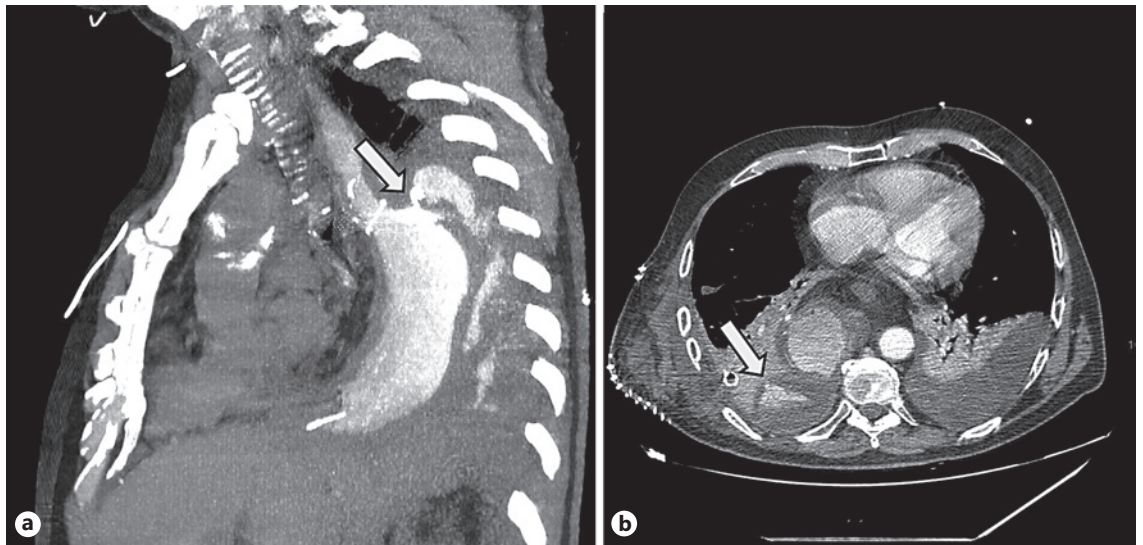


Fig. 1. Computed tomography. **a** Dehiscence of the gastric staple line of the esophagogastric anastomosis (arrow). **b** Gastropleural fistula with oral contrast in the pleural cavity (arrow).

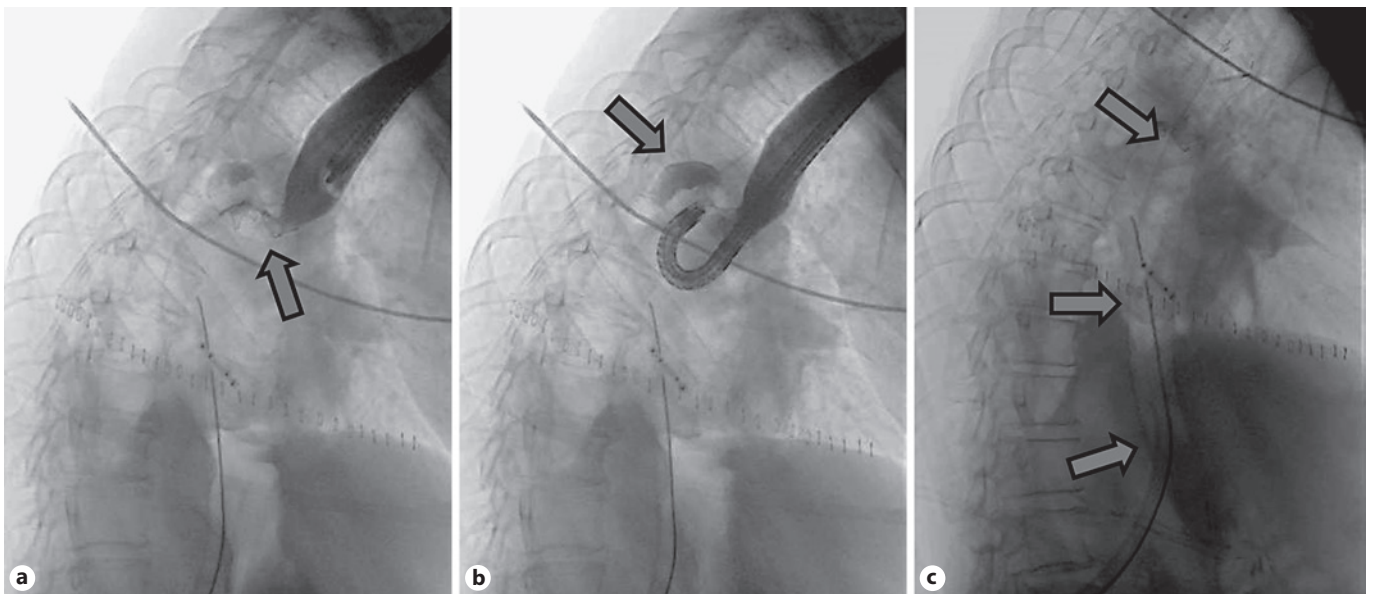


Fig. 2. Fluoroscopic image. **a** OTSC clip (arrow) placed in the first esophagogastroduodenoscopy. **b** Extraluminal contrast leakage (arrow) from the gastric conduit. **c** Niti-S™ MEGA™ Esophageal Stent (Mega-Stent), placed between the esophagus and the bulbus (arrows).

leakage (Fig. 2b). The previous OTSC clip was removed with a grasp and soft coagulation with Argon Plasma was applied at the orifice margins. Another OTSC was placed over the dehiscence orifice, and no further extraluminal contrast was observed at fluoroscopic evaluation. Given the friability of the tissue surrounding the OTSC and the failed first attempt with this method, we complemented therapy with a fully covered metal stent (FCMS). A Niti-

S™ MEGA™ Esophageal Stent (Mega-Stent) from Taewoong Medical measuring 28 × 230 mm (Fig. 3) was chosen to ensure gastric conduit exclusion and facilitate healing. The proximal end of the stent was anchored in the esophagus and the distal end in the proximal bulbus (Fig. 2c). Three through-the-scope (TTS) clips were also used at the proximal end of the Mega-Stent to avoid migration. The patient improved and subsequent radiologic con-

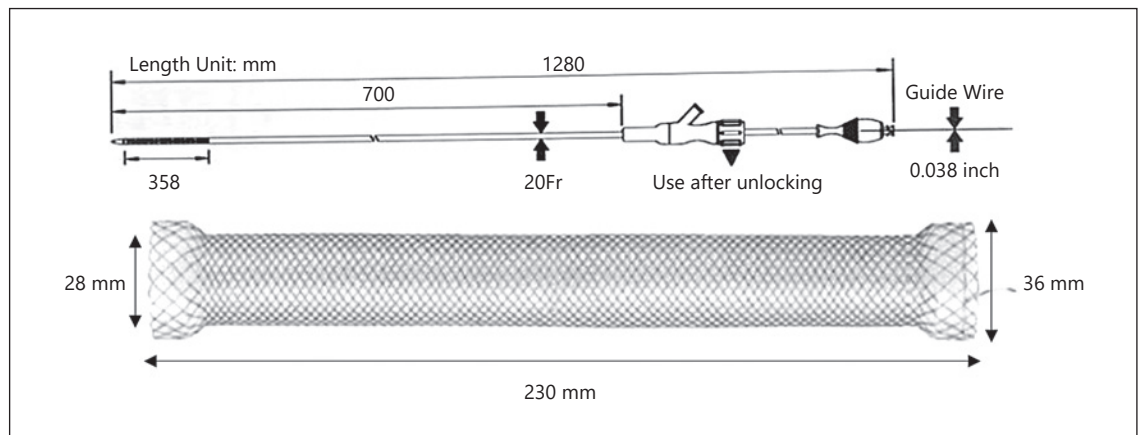


Fig. 3. Characteristics of Niti-S™ MEGA™ esophageal stent (adapted from Taewoong Medical).

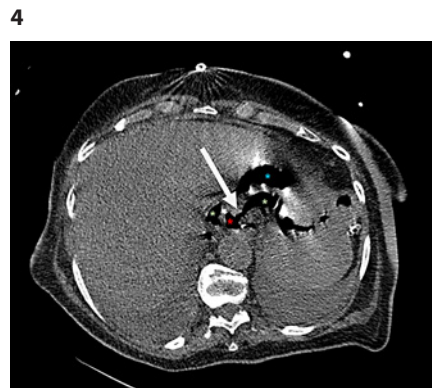
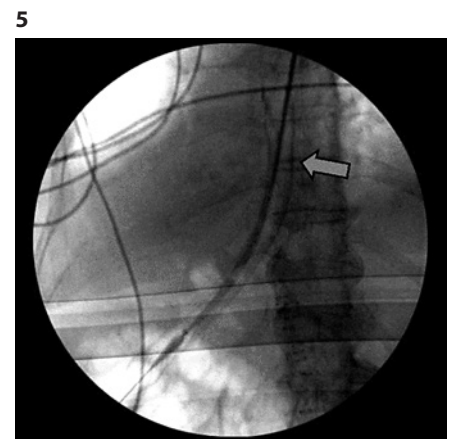


Fig. 4. Computed tomography showing anastomotic dehiscence (arrow). Red asterisk: esophagojejunal anastomosis. Blue asterisk: jejunum. Green asterisk: extraluminal air.

Fig. 5. Fluoroscopic image of partially covered metal stent placed in the esophagus, covering dehiscence.



control showed progressively AL resolution. Several infectious complications significantly increased hospital in-stay length. TPN was maintained during most of the hospital admission. Enteral nutrition was started on the 36th day after Mega-Stent placement and parenteral support was discontinued after 40 days. Before patient discharge, repeated CT confirmed absence of AL and ambulatory endoscopy was scheduled for 6 weeks later to remove the stent which was easily performed with a grasp. Scar tissue was observed in the previous AL location, and no extraluminal contrast was observed at fluoroscopic evaluation, thus confirming successful of endoscopic treatment.

Case 2

An 86-year-old woman was referred to the Surgery Outpatient Clinic with a 1-month history of low solid food dysphagia. Relevant medical history included left nephrectomy due to tuberculosis and iodine contrast allergy. Endoscopy revealed ulcerated gastric neoplasia, involving the anterior wall of the distal corpus and proximal antrum. Biopsies were consistent with well-differentiated gastric adenocarcinoma. CT and FDG-PET showed local lymph node involvement but no distant metastasis. Staging laparoscopy did not reveal peritoneal metastasis. Given the patient's good per-

formance status (ECOG-0/Karnofsky-90), total gastrectomy with Roux-en-Y esophagojejunostomy was performed without immediate complications after a thorough informed consent had been obtained. A feeding jejunostomy was also left for immediate nutritional support. On the third postoperative day, the patient presented fever, thoracalgia and dyspnea. Thoracic CT confirmed AL (Fig. 4). Endoscopy did not identify a clear dehiscence orifice. However, at fluoroscopic evaluation, extraluminal contrast was seen at the esophagojejunal anastomosis (EJA) site. A 23 × 125 mm PCMS was placed to cover the EJA (Fig. 5). The patient started TPN. Ten days after surgery, biliary drainage was noted in the thoracic drain. CT demonstrated oral contrast leakage at the proximal end of the PCMS. EGD with fluoroscopic control confirmed minimal extraluminal contrast at the proximal third of the stent. A new 23 × 125 mm PCMS was placed to cover the leakage area, the proximal end located 5 cm above the previous stent, secured with 3 TTS clips. After this intervention, the patient presented clinical improvement. Repeated CT confirmed absence of leakage. She was weaned off TPN, being discharged after 47 days due to several infectious complications. Endoscopic removal of both stents was scheduled for 10 weeks after discharge. Due to granulation tissue on both ends of the PCMS, the endoscopy team decided to place a

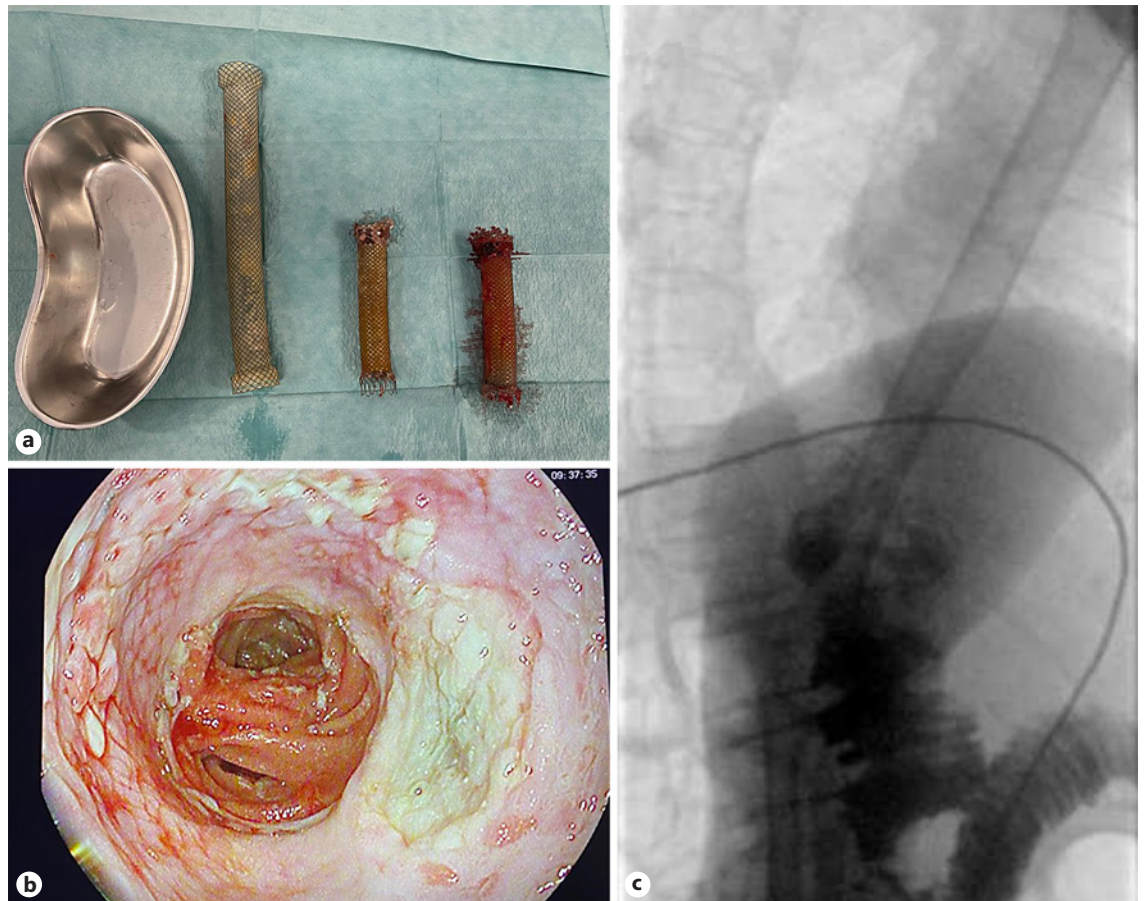


Fig. 6. **a** Three stents removed endoscopically after using the Mega-Stent for stent-in-stent technique. **b** Endoscopic image of anastomosis with no evidence of dehiscence. **c** Fluoroscopic image revealing no extraluminal leakage.

Mega-Stent to cover both uncovered tops (stent-in-stent technique). Two weeks later, the three stents could be easily removed using a grasp without complications (Fig. 6a). The anastomosis presented no dehiscence (Fig. 6b) and, at fluoroscopic evaluation, no leakage was seen (Fig. 6c).

Discussion

AL after oncologic surgery is a very serious and challenging problem. Gastrectomy plus lymphadenectomy followed by EJA is the standard treatment for gastric cancer. Despite advances in surgical techniques and perioperative management, EJA leak remains a serious and potentially fatal complication of total gastrectomy [16]. Overall, the mortality rate associated with EJA leak is approximately 30% [7]. Esophagectomy, on the other hand,

is a technically challenging procedure, prone to high incidence of complications. AL after cancer resection remains one of the most feared complications, associated with high mortality [17].

Isolated AL can sometimes be successfully managed with conservative treatment, including antibiotics, nil by mouth, nasojejunal tube or parenteral feeding. Several endoscopic approaches including SEMS, endoscopic vacuum therapy and clips have been reported to be useful in treating AL and can result in healing with minimal morbidity [11–14]. Revisional surgery presents a challenge and carries a risk of further complications. However, surgical intervention is sometimes required for refractory AL cases after failed conservative or endoscopic approach. No evidence supporting a specific treatment option for AL has been defined for lacking high-quality studies [18, 19].

Vacuum therapy has shown good results in the literature, but in both our cases, only small dehiscence orifices were observed, without a cavity contacting with esophageal lumen, thus making it an inadequate scenario to apply vacuum therapy. Also, we have little experience with this treatment, as opposed to OTSC and luminal stents. The endoscopic SEMS placement for cases of AL or fistula presents a safe and well-established therapeutic technique, with low overall procedure-related mortality. However, stent migration and failure to completely cover large AL are the main pitfalls of the procedure [20]. The use of multiple or larger stents can be a way of overcoming such limitations. Several reports described the use of a Mega-Stent for managing leaks after laparoscopic sleeve gastrectomy [21–23]. In fact, the Mega-Stent was developed for management of leaks after sleeve gastrectomy, but the EGA leak presents a similar behavior, thus Mega-Stent is a valid option in this situation. Only one case report described clinical success using a Mega-Stent in a case of postesophagectomy gastropleural fistula [15].

In our first case, the patient underwent an esophagectomy and presented AL in the proximal part of the gastric conduit. The choice of the Mega-Stent arose after a first failed attempt of AL treatment using an OTSC. Considering the abrupt diameter transition between the esophagus and the stomach, a standard sized SEMS would not properly seal the AL. Also, since conventional stents would present a significant migration risk, an esophageal Mega-Stent was selected to ensure gastric conduit exclusion and facilitate healing while minimizing dislodgment, as it could be placed and anchored between the esophagus and the bulbous. Nevertheless, we chose to place 3 TTS clips in the proximal end of the Mega-Stent to guarantee stent fixation. OTSC and endoscopic suturing are recommended to prevent stent migration. Unfortunately, we had no more OTSC with adequate size for this purpose available at that moment in our unit. Furthermore, the placement of an OTSC would be a more expensive strategy just for preventing stent migration. As endoscopic suturing was not available in our center, we considered the placement of TTS clips to be the best choice in this case. The AL was successfully treated.

Regarding the second patient, with an EJA leak after a total gastrectomy, a first PCMS was placed in attempt to treat the AL. The choice of a PCMS was to prevent stent migration. However, one stent could not resolve the AL, so we placed a second PCMS, successfully treating the AL. Stent removal was scheduled 10 weeks thereafter, but due to granulation tissue on both PCMS, we opted to perform a stent-in-stent technique using an esophageal Mega-

Stent. The use of a single standard size FCMS would not have enough length to cover both uncovered portions of the previously placed stents. The alternative would be to place two FCMS, either in the same endoscopic procedure or in different endoscopic times and removing them sequentially in two stent-in-stent approaches. In this case, the Mega-Stent proved very useful in this case since we removed all three stents 14 days later without complications. This case illustrates an alternative application of the Mega-Stent in AL management.

The authors believe that the Mega-Stent can be an emerging tool for endoscopic management of surgical AL since it is safe, easy to place, able to treat large AL and reduces the risk of stent migration. It can also be used in stent in-growth cases, avoiding the need for multiple FCMS, thus simplifying the procedure.

Statement of Ethics

Written informed consent was obtained from both patients for publication of this case report.

Conflict of Interest Statement

The authors have no conflicts of interest to declare.

Funding Sources

The authors have no funding sources regarding the present manuscript.

Author Contributions

Mariana Brito wrote the manuscript. Gonçalo Nunes performed the endoscopic procedures. Mariana Brito, Gonçalo Nunes, Carlos Luz, Gabriel Oliveira and Pedro Pinto Marques were enrolled in patients' management. Gonçalo Nunes, Gabriel Oliveira and Jorge Fonseca reviewed the manuscript. Gonçalo Nunes and Jorge Fonseca supervised the study.

Data Availability Statement

All data generated or analyzed during this study are included in this article. Further enquiries can be directed to the corresponding author.

References

- 1 van Rossum PSN, Haverkamp L, Carvello M, Ruurda JP, van Hillegersberg R. Management and outcome of cervical versus intrathoracic manifestation of cervical anastomotic leakage after transthoracic esophagectomy for cancer. *Dis Esophagus*. 2017;30(1):1–8.
- 2 Hu Z, Yin R, Fan X, Zhang Q, Feng C, Yuan F, et al. Treatment of intrathoracic anastomotic leak by nose fistula tube drainage after esophagectomy for cancer. *Dis Esophagus*. 2011;24(2):100–7.
- 3 Biere SSAY, Maas KW, Cuesta MA, van der Peet DL. Cervical or thoracic anastomosis after esophagectomy for cancer: a systematic review and meta-analysis. *Dig Surg*. 2011;28(1):29–35.
- 4 Kassis ES, Kosinski AS, Ross P, Koppes KE, Donahue JM, Daniel VC. Predictors of anastomotic leak after esophagectomy: an analysis of the society of thoracic surgeons general thoracic database. *Ann Thorac Surg*. 2013;96(6):1919–26.
- 5 Raymond DP, Seder CW, Wright CD, Magee MJ, Kosinski AS, Cassivi SD, et al. Predictors of major morbidity or mortality after resection for esophageal cancer: a society of thoracic surgeons general thoracic surgery database risk adjustment model. *Ann Thorac Surg*. 2016;102(1):207–14.
- 6 Sierzega M, Kolodziejczyk P, Kulig J. Impact of anastomotic leakage on long-term survival after total gastrectomy for carcinoma of the stomach. *Br J Surg*. 2010;97(7):1035–42.
- 7 Lang H, Piso P, Stukenborg C, Raab R, Jähne J. Management and results of proximal anastomotic leaks in a series of 1,114 total gastrectomies for gastric carcinoma. *Eur J Surg Oncol*. 2000;26(2):168–71.
- 8 Schlottmann F, Molena D. Anastomotic leak: an early complication with potentially long-term consequences. *J Thorac Dis*. 2016;8(10):E1219–20.
- 9 Moon SW, Kim JJ, Cho DG, Park JK. Early detection of complications: anastomotic leakage. *J Thorac Dis*. 2019;11(Suppl 5):S805–11.
- 10 Truong S, Böhm G, Klinge U, Stumpf M, Schumpelick V. Results after endoscopic treatment of postoperative upper gastrointestinal fistulas and leaks using combined Vicryl plug and fibrin glue. *Surg Endosc*. 2004;18(7):1105–8.
- 11 Kim YJ, Shin SK, Lee HJ, Chung HS, Lee YC, Park JC, et al. Endoscopic management of anastomotic leakage after gastrectomy for gastric cancer: how efficacious is it? *Scand J Gastroenterol*. 2013;48(1):111–8.
- 12 Groce JR, Raju GS, Hewlett A, Zwischenberger JB. Endoscopic clip closure of a gastric staple-line dehiscence (with video). *Gastrointest Endosc*. 2007;65(2):321–2.
- 13 Ahmed M, Habis S, Mahmoud A, Chin M, Saeed R. Anastomotic leak after esophagectomy for esophageal cancer treated with a stent: a case report. *Cureus*. 2019;11(2):e4055.
- 14 Brams A, Bulois P, Maunoury V, Triboulet JP, Mariette C. Treatment of thoracic anastomotic leaks after oesophagectomy with self-expanding and extractable covered stent. *Gastroenterol Clin Biol*. 2008;32(1 Pt. 1):41–5.
- 15 Ishtiaq J, Sutton J, Ahmed W. A novel management of post-oesophagectomy gastropleural fistula. *J Gastrointest Oncol*. 2016;7(6):E93–7.
- 16 Sauvanet A, Mariette C, Thomas P, Lozac'h P, Segol P, Tiret E, et al. Mortality and morbidity after resection for adenocarcinoma of the gastroesophageal junction: predictive factors. *J Am Coll Surg*. 2005;201(2):253–62.
- 17 Alanezi K, Urschel JD. Mortality secondary to esophageal anastomotic leak. *Ann Thorac Cardiovasc Surg*. 2004;10(2):71–5.
- 18 Versteegen MHP, Bouwense SAW, van Worum F, ten Broek R, Siersema PD, Rovers M, et al. Management of intrathoracic and cervical anastomotic leakage after esophagectomy for esophageal cancer: a systematic review. *World J Emerg Surg*. 2019;14:17.
- 19 Rodrigues-Pinto E, Repici A, Donatelli G, Macedo G, Devière J, van Hooft JE, et al. International multicenter expert survey on endoscopic treatment of upper gastrointestinal anastomotic leaks. *Endosc Int Open*. 2019;7(12):E1671–82.
- 20 van Boeckel PGA, Sijbring A, Vleggaar FP, Siersema PD. Systematic review: temporary stent placement for benign rupture or anastomotic leak of the oesophagus. *Aliment Pharmacol Ther*. 2011;33(12):1292–301.
- 21 Galloro G, Magno L, Musella M, Manta R, Zullo A, Forestieri P. A novel dedicated endoscopic stent for staple-line leaks after laparoscopic sleeve gastrectomy: a case series. *Surg Obes Relat Dis*. 2014;10(4):607–11.
- 22 Klimczak T, Klimczak J, Szewczyk T, Janczak P, Jurałowicz P. Endoscopic treatment of leaks after laparoscopic sleeve gastrectomy using MEGA esophageal covered stents. *Surg Endosc*. 2018;32(4):2038–45.
- 23 Billmann F, Pfeiffer A, Sauer P, Billeter A, Rupp C, Koschny R, et al. Endoscopic stent placement can successfully treat gastric leak following laparoscopic sleeve gastrectomy if and only if an eophagoduodenal megastent is used. *Obes Surg*. 2021;32(1):64–73.