

# GLUT3 regulates alternative macrophage signaling through a glucose transport-independent role

Peng Zhang, Jason Miska, and Amy B. Heimberger

Department of Neurological Surgery, Malnati Brain Tumor Institute, Northwestern University Feinberg School of Medicine, Chicago, Illinois, USA.

**Macrophages are key mediators of innate immunity whose functional state can be regulated by glucose transporters. Although abundantly expressed in macrophages, the specific function of GLUT3, an isoform of facilitative glucose transporters, has not been clearly established. In this issue of the JCI, Dong-Min Yu and colleagues identify an alternative role for GLUT3 in promoting M2 macrophage polarization. The authors demonstrated that GLUT3 was upregulated upon M2 stimulation and was required for efficient alternative macrophage polarization and function. They further showed that GLUT3-induced M2 polarization was independent of glucose transport and functioned through Ras-mediated regulation of IL-4R endocytosis and IL-4/STAT6 activation. These findings may guide the development of macrophage-targeted treatments.**

## Role of glucose transporters in macrophage function

Macrophages are key mediators of innate immunity, widely distributed throughout the body, and play an important role in regulating inflammation, tissue homeostasis, and pathogen clearance. As a heterogeneous population of myeloid cells, macrophages are well known for their highly diverse and plastic features (1). These cells rapidly respond to environmental cues or stimuli to reshape their morphology, phenotype, and functionality. An M1/M2 polarization paradigm has been broadly used to define two distinct subtypes of macrophages, i.e., M1 or proinflammatory/classically activated macrophages and M2 or antiinflammatory/alternatively activated

macrophages. However, this oversimplified dichotomization is an *in vitro* phenomenon that does not portray the full spectrum of these cells under complex scenarios (2). Despite these limitations, this paradigm has provided crucial and biologically relevant insight into the role of macrophages in the context of inflammation, tissue repair, autoimmune diseases, and tumors. Importantly, this model has led to potential actionable strategies that reprogram or repolarize macrophages as promising therapeutic approaches for various diseases (3). As such, there is a need for an in-depth understanding of macrophage polarization mechanisms.

Accumulating immunometabolism studies have characterized the correlation

between the metabolic features of macrophages and their functions (4), thereby highlighting the key role of glycolysis in regulating functional states. Glycolysis converts glucose into pyruvate for production of ATP and other intermediate products for the biosynthesis of amino acids and nucleotides (5). Several families of glucose transporters have been identified, including facilitative sugar transporters (GLUTs), Na<sup>+</sup>/glucose cotransporters (SGLTs), and sugars will eventually be exported transporters (SWEETs) (6). GLUTs are also known to regulate the immune function of macrophages. For example, overexpression of GLUT1 largely increased glucose uptake and metabolism, thus enhancing the secretion of inflammatory mediators and inflammatory function of macrophages (7). There are 13 GLUT isoforms, which have different features regarding tissue distribution, subcellular localization, and function (8). Although some GLUT isoforms, such as GLUT1, have been intensively studied, further studies deciphering the specific function of other GLUT isoforms, particularly in immune cells, await future study.

## GLUT3 is essential to M2 macrophage phenotypes

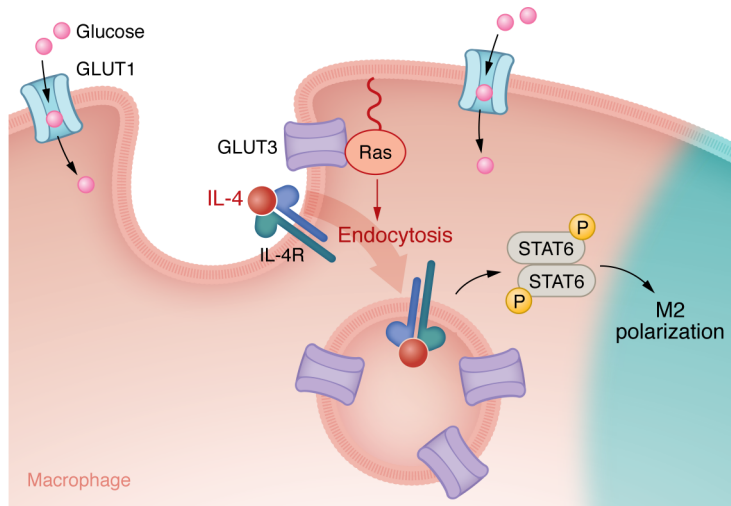
Sharing 65%–66% sequence identity (9), GLUT1 and GLUT3 are both abundantly expressed in macrophages (10), but there is limited knowledge about their specific roles in modulating immune functions of these cells. To address this knowledge gap, Dong-Min Yu and colleagues aimed to investigate (i) how the expression of these GLUTs responds to polarization stimuli, and (ii) what effects these GLUT isoforms have on polarization and function of macrophages (11). By using a variety of models, including murine bone marrow-derived macrophages (BMDMs), RAW 264.7 cells, human THP-1 cells, and peripheral blood-derived monocytes, the authors demonstrated that GLUT1 and GLUT3 were upregulated by M1 and M2 stimuli, respec-

► **Related Article:** <https://doi.org/10.1172/JCI170706>

**Conflict of interest:** ABH serves on the advisory board of Caris Life Sciences and the WCG Oncology Advisory Board, and is supported by research grants from Alnylam and AbbVie. She additionally has active granted patents titled “miRNA for treating cancer and for use with adoptive immunotherapies” (no. 9,675,633) and “Concurrent chemotherapy and immunotherapy” (no. 9,399,662), with a patent pending, “Low intensity ultrasound combination cancer therapies” (international applications PCT/US2022/019435 and US 63/158,642). PZ has pending patents “Cytotoxic lipid particles targeted to tumor-associated myeloid cells (TAMCs) and synergized with radiation therapy for treating glioblastoma” (NU2019-169; 17/089,563) and “Lipid nanoparticles and methods of using the same for treating cell proliferative diseases and disorders” (NU2022-151; 63/380,317).

**Copyright:** © 2023, Zhang et al. This is an open access article published under the terms of the Creative Commons Attribution 4.0 International License.

**Reference information:** *J Clin Invest.* 2023;133(21):e174540. <https://doi.org/10.1172/JCI174540>.



**Figure 1. GLUT3 induces M2 polarization of macrophages.** GLUT3-induced M2 polarization is glucose transport independent and functions through Ras-mediated regulation of IL-4R endocytosis and IL-4/STAT6 activation.

tively. They also generated myeloid cell-specific GLUT1-KO and GLUT3-KO mice to demonstrate that GLUT3 deficiency impaired M2 polarization of macrophages. Unlike GLUT1, GLUT3 did not appear to be the major contributor to glucose uptake and metabolism in macrophages, and the deletion of macrophage GLUT3 did not lead to compensatory upregulation of other glucose transporters. To gain further insights into the functional role of GLUT3 in M2 macrophages *in vivo*, Yu et al. used human tissues and mouse models to illustrate that GLUT3 promoted allergic inflammation and wound healing functions (11).

Mechanistically, the investigators showed that GLUT3 mediated IL-4/STAT6 signal transduction (Figure 1) — a key signaling pathway for M2 polarization (12). They showed reduced phosphorylated STAT6 (p-STAT6) in response to M2 stimulation in GLUT3-KO cells, but not impaired p-STAT1 during M1 stimulation, highlighting the role of GLUT3 in M2 polarization through STAT6 signaling. Using both genetic and pharmacological manipulation with G3iA, a GLUT3 glucose transport inhibitor, they clarified that GLUT3-mediated STAT6 activation and M2 polarization did not rely on its glucose transport activity.

Since GLUT isoforms have different subcellular localizations, Yu et al. confirmed that GLUT3 is predominantly localized intracellularly using immunoflu-

orescence and cell fractionation (11, 13). Based on the endosomal colocalization of GLUT3 and p-STAT6 after IL-4 stimulation and the fact that the STAT6 activation was impaired with an inhibitor of dynamin and endocytosis, the authors posited that endocytosis is essential for p-STAT6 induction after IL-4 stimulation. This hypothesis was confirmed based on the finding that GLUT3 deficiency impaired endocytosis but did not affect the expression of IL-4 receptor  $\alpha$  (IL-4R $\alpha$ ) or common gamma ( $\gamma_c$ ) chain, the heterodimers forming type I IL-4Rs. To understand how endosomal GLUT3 regulated IL-4R endocytosis, Yu et al. performed binding studies that found a direct interaction between the intracytoplasmic loop (ICL) domain of GLUT3 with GTP-bound Ras, which promotes IL-4R subunit endocytosis, STAT6 signaling, and M2 polarization (11).

## Conclusions and future directions

Yu et al. demonstrate the essential role of GLUT3 in polarization and function of M2 macrophages, and shed light on the underlying mechanisms. The authors conclude that endosomal GLUT3 promotes IL-4/STAT6 signaling by directly interacting with Ras and regulating IL-4R endocytosis. One highlight of this work is the identification of a unique and critical role of GLUT3 in macrophage polarization and function, which does not rely on

its glucose transport function and glycolysis in macrophages. GLUT3 is a glucose transporter that is abundantly expressed in macrophages, but its specific function, particularly in macrophages or in general immune cell populations, remains to be fully understood.

The results from Yu et al. (11) may have high scientific value and clinical importance, considering the essential function and high abundance of macrophages in various diseases. The subcellular localization of GLUT3 as well as its function in endosomal signaling and cytokine receptor signaling pathways, as revealed by this study, may open a door for future studies to explore the role of GLUT3 in regulating other receptor tyrosine kinases that also require endocytosis and endosomal enrichment for signal transduction (11). It would be intriguing to explore which cytokines and signaling pathways require GLUT3 function for optimal signal transduction. More specifically, is GLUT3 solely involved in antiinflammatory or immunosuppressive cytokine-mediated signaling? Areas of future investigation also include the function of GLUT3 in other cells such as neurons (14), tumor cells, and even other myeloid populations like microglia and tumor-associated macrophages. For example, Tsai et al. reported that GLUT3 is highly expressed in triple-negative breast cancer cells (15). This expression is correlated with a proinflammatory gene signature and activation of M1 tumor-associated macrophages through GLUT3-regulated tumor secretion of CXCL8 (15). As the crucial role of the myeloid compartment in the tumor microenvironment has emerged and gained increasing importance, how GLUT3 expression and GLUT3-targeted therapy affect tumor progression and immunotherapy outcome may be clinically relevant. This work by Yu et al. (11) may provide valuable clues for guiding the development of new macrophage-targeted therapy with potential clinical benefits. Other than GLUT3, this study may also inspire future studies to explore the unknown functions of other GLUT isoforms in addition to/rather than glucose transport.

## Acknowledgments

Support was provided by the Department of Neurological Surgery, Malnati Brain

Tumor Institute, the Lurie Comprehensive Cancer Center at Northwestern University, the NIH/National Cancer Institute (NCI) (grant R37CA266487), and Northwestern Brain Tumor SPORE (NCI grant P50CA221747).

Address correspondence to: Peng Zhang, Department of Neurological Surgery, Northwestern University Feinberg School of Medicine, Simpson and Querrey Biomedical Research Center, 303 E. Superior St., Room 6-406, Chicago, Illinois 60611, USA. Phone: 312.503.0667; Email: peng@northwestern.edu. Or to: Amy B. Heimerberger, Department of Neurological Surgery, Northwestern University Feinberg School of Medicine, Simpson and Querrey Biomedical Research Center, 303 E. Superior St., Room 6-516, Chicago, Illinois 60611, USA. Phone: 312.622.7800; Email: amy.heimerberger@northwestern.edu.

1. Ginhoux F, et al. New insights into the multi-dimensional concept of macrophage ontogeny, activation and function. *Nat Immunol.* 2016;17(1):34–40.
2. Mosser DM, Edwards JP. Exploring the full spectrum of macrophage activation. *Nat Rev Immunol.* 2008;8(12):958–969.
3. Wynn TA, et al. Macrophage biology in development, homeostasis and disease. *Nature.* 2013;496(7446):445–455.
4. Sun JX, et al. Effects of metabolism on macrophage polarization under different disease backgrounds. *Front Immunol.* 2022;13:880286.
5. Lunt SY, Vander Heiden MG. Aerobic glycolysis: meeting the metabolic requirements of cell proliferation. *Annu Rev Cell Dev Biol.* 2011;27:441–464.
6. Chen LQ, et al. Transport of sugars. *Annu Rev Biochem.* 2015;84:865–894.
7. Freerman AJ, et al. Metabolic reprogramming of macrophages: glucose transporter 1 (GLUT1)-mediated glucose metabolism drives a proinflammatory phenotype. *J Biol Chem.* 2014;289(11):7884–7896.
8. Navale AM, Paranjape AN. Glucose transporters: physiological and pathological roles. *Biophys Rev.* 2016;8(1):5–9.
9. De Zutter JK, et al. Sequence determinants of GLUT1 oligomerization: analysis by homology-scanning mutagenesis. *J Biol Chem.* 2013;288(28):20734–20744.
10. Fu Y, et al. Facilitative glucose transporter gene expression in human lymphocytes, monocytes, and macrophages: a role for GLUT isoforms 1, 3, and 5 in the immune response and foam cell formation. *Blood Cells Mol Dis.* 2004;32(1):182–190.
11. Yu D, et al. GLUT3 promotes macrophage signaling and function via Ras-mediated endocytosis in atopic dermatitis and wound healing. *J Clin Invest.* 2023;133(21):e170706.
12. Nelms K, et al. The IL-4 receptor: signaling mechanisms and biologic functions. *Annu Rev Immunol.* 1999;17:701–738.
13. McClory H, et al. Glucose transporter 3 is a Rab11-dependent trafficking cargo and its transport to the cell surface is reduced in neurons of CAG140 Huntington's disease mice. *Acta Neuropathol Commun.* 2014;2:179.
14. Maher F, et al. Glucose transporter proteins in brain. *FASEB J.* 1994;8(13):1003–1011.
15. Tsai TH, et al. Overexpression of GLUT3 promotes metastasis of triple-negative breast cancer by modulating the inflammatory tumor microenvironment. *J Cell Physiol.* 2021;236(6):4669–4680.