

RESEARCH ARTICLE

Nrf1 is not a direct target gene of SREBP1, albeit both are integrated into the rapamycin-responsive regulatory network in human hepatoma cells

Keli Liu^{1,2,3}, Shaofan Hu^{1,2,3}, Lu Qiu^{1,3,4}, Meng Wang^{1,3}, Zhengwen Zhang⁵, Guiyin Sun², Yiguo Zhang^{2,3*}

1 Bioengineering College, Chongqing University, Shapingba District, Chongqing, China, **2** Chongqing University Jiangjin Hospital, School of Medicine, Chongqing University, Jiangjin District, Chongqing, China, **3** The Laboratory of Cell Biochemistry and Topogenetic Regulation, College of Bioengineering, Chongqing University, Shapingba District, Chongqing, China, **4** School of Life Sciences, Zhengzhou University, Zhengzhou, Henan, China, **5** Laboratory of Neuroscience, Institute of Cognitive Neuroscience and School of Pharmacy, University College London, London, England, United Kingdom

* yiguo Zhang@cqu.edu.cn



OPEN ACCESS

Citation: Liu K, Hu S, Qiu L, Wang M, Zhang Z, Sun G, et al. (2023) Nrf1 is not a direct target gene of SREBP1, albeit both are integrated into the rapamycin-responsive regulatory network in human hepatoma cells. PLoS ONE 18(11): e0294508. <https://doi.org/10.1371/journal.pone.0294508>

Editor: Salvatore V Pizzo, Duke University School of Medicine, UNITED STATES

Received: February 14, 2023

Accepted: November 2, 2023

Published: November 27, 2023

Peer Review History: PLOS recognizes the benefits of transparency in the peer review process; therefore, we enable the publication of all of the content of peer review and author responses alongside final, published articles. The editorial history of this article is available here: <https://doi.org/10.1371/journal.pone.0294508>

Copyright: © 2023 Liu et al. This is an open access article distributed under the terms of the [Creative Commons Attribution License](https://creativecommons.org/licenses/by/4.0/), which permits unrestricted use, distribution, and reproduction in any medium, provided the original author and source are credited.

Data Availability Statement: All relevant data are within the paper and its [Supporting information](#) files.

Abstract

The essential role of protein degradation by ubiquitin-proteasome system is exerted primarily for maintaining cellular protein homeostasis. The transcriptional activation of proteasomal genes by mTORC1 signaling depends on Nrf1, but whether this process is directly *via* SREBP1 remains elusive. In this study, our experiment evidence revealed that Nrf1 is not a direct target of SREBP1, although both are involved in the rapamycin-responsive regulatory networks. Closely scrutinizing two distinct transcriptomic datasets unraveled no significant changes in transcriptional expression of Nrf1 and almost all proteasomal subunits in either *siSREBP2*-silencing cells or *SREBP1*^{-/-}MEFs, when compared to equivalent controls. However, distinct upstream signaling to Nrf1 dislocation by p97 and its processing by DDI1/2, along with downstream proteasomal expression, may be monitored by mTOR signaling, to various certain extents, depending on distinct experimental settings in different types of cells. Our further evidence has been obtained from *DDI1*^{-/-}(*DDI2*^{insC}) cells, demonstrating that putative effects of mTOR on the rapamycin-responsive signaling to Nrf1 and proteasomes may also be executed partially through a DDI1/2-independent mechanism, albeit the detailed regulatory events remain to be determined.

1. Introduction

The normal homeostasis must have to be maintained in all healthy life forms, due to homeostasis robustness, plasticity and resilience ensuring that their structural organization, physiological function and biological behavior are being properly performed and perpetuated at a stable, robust steady-state [1]. Conversely, defects in the maintenance of cell fitness and homeostasis have emerged as an underlying feature of a vast variety of pathologies, such as

Funding: This study was funded by the National Natural Science Foundation of China (NSFC, with two project grants 81872336 and 82073079) awarded to Prof. Yiguo Zhang. The funders had no role in study design, data collection and analysis, decision to publish, or preparation of the manuscript.

Competing interests: The authors have declared that no competing interests exist.

cancer, senescence and aging-related diseases [2–4]. Of note, protein homeostasis (i.e. proteostasis) is preserved or not, depending on a steady balance between protein synthesis and turnover [5, 6]. Interestingly, as reported by Manning's group [7], such a finely-programmed balance between protein synthesis and degradation was coordinately regulated by the mechanistic target of rapamycin complex 1 (mTORC1), a central kinase that is generally activated by cell growth- and proliferation signaling to trigger protein translation [8]. Besides, they had also shown that mTORC1 signaling activates transcriptional expression of nuclear factor erythroid 2-related factor 1 (Nrf1 with multiple isoforms, encoded by *NFE2L1*) directly by [sterol regulatory element-binding protein 1](#) (SREBP1) [7, 9], although SREBP1 has been commonly accepted as a key control of lipid synthesis and membrane homeostasis, even in response to the rather multifaceted mTOR signaling [10–12].

Intriguingly, in the present study, our evidence has been presented revealing that Nrf1 is not a direct target of SREBP1, albeit they are involved in the rapamycin-responsive regulatory networks. Further experiments are designed to determine whether p97, DDI1 (also called VSM1 (v-SNARE binding protein-1)), which is a highly conserved aspartyl protease among all eukaryotes from yeast to human [13–15] and DDI2 (only present in vertebrates [16]) exert the putative rapamycin-responsive effects on Nrf1 processing and activity to regulate the proteasomal expression. Moreover, the human HepG2-derived *DDI1*^{-/-} (*DDI2*^{msC}) cell line and tumor xenograft model have also been established herein, to further elucidate the rapamycin-responsive effects on Nrf1 and cognate proteasomes.

2. Materials and methods

2.1 Cell culture and treatments

HepG2 and HL7702 cell lines were grown in DMEM supplemented with 5 mM glutamine, 10% (v/v) fetal bovine serum (FBS), 100 units/ml of either penicillin or streptomycin, in a 37°C incubator with 5% CO₂. Additional HepG2-derived cell lines with the knockout of *DDI1*^{-/-} were herein established by CRISPR-editing of *DDI1* with specific gRNA (S1 Table in [S2 File](#)). The authenticity of *DDI1*^{-/-} cells had been confirmed by its authentication analysis. Thereafter, experimental cells were transfected with a Lipofectamine 3000 mixture with indicated plasmids or siSREBP1 (with a pair of sequences, S1 Table in [S2 File](#)) for 8 h, and allowed for recovery from transfection in a fresh medium for 24 h before being experimented. Additional cells were treated with the mTOR inhibitor rapamycin (RAPA, 20 to 200 nM) or proteasomal inhibitor MG132 (1 to 10 μM) for different time periods (4, 16 or 24h).

2.2 Expression constructs

An expression construct for human SREBP1 was made by cloning its full-length cDNA sequence into the pcDNA3 vector, with a pair of its forward and reverse primers (S1 Table in [S2 File](#)), which were synthesized by Sangon Biotech Co. (Shanghai, China). Another expression plasmid of Nrf1 was reported previously [17]. The fidelity of all these constructs was confirmed to be true by sequencing.

2.3 Luciferase reporter assay

After experimental cells (1.0×10^5) were allowed for growth in each well of the 12-well plates to reach 80% confluence, they were co-transfected with a Lipofectamine 3000 mixture with *pNrf1-luc* or *pNrf2-luc* established by Qiu *et al.* [18], plus other expression plasmids. In this dual reporter assay, the *Renilla* expression by pRL-TK served as an internal control for transfection efficiency. The resulting data were normalized from at least three independent

experiments, each of which was performed in triplicate, and thus shown as a fold change (mean \pm S.D) relative to the control values.

2.4 Quantitative real-time PCR

About 500 ng of total RNAs from experimental cells were subjected to reverse-transcriptase reaction to generate the first strand of cDNA. The newly-synthesized cDNA was used as the template for quantitative PCR in the Master Mix, before being deactivated at 95°C for 10 min, and amplified by 40 reaction cycles of annealing at 95°C for 15 s and then extending at 60°C for 30 s. The final melting curve was validated to examine the amplification quality. While β -actin mRNA level was employed as an optimal internal standard control, target gene expression levels were determined by quantitative real-time PCR, as described previously [19], with each pair of the indicated primers (S1 Table in S2 File). The resulting data were shown a fold change (mean \pm S.D) relative to the control values.

2.5 Western blotting with distinct antibodies

Total cell lysates in a lysis buffer (0.5% SDS, 0.04 mol/L DTT, pH 7.5) with protease and phosphatase inhibitors (each of cOmplete and PhosSTOP EASYpack tablets in 10 ml buffer), were denatured immediately at 100°C for 10 min, sonicated sufficiently, and diluted in 3 \times loading buffer (187.5 mmol/L Tris-HCl, pH 6.8, 6% SDS, 30% Glycerol, 150 mmol/L DTT, 0.3% Bromophenol Blue) at 100°C for 5 min. Subsequently, equal amounts of protein extracts were subjected to separation by SDS-PAGE containing 4–15% polyacrylamide, and then visualization by Western blotting with distinct antibodies as indicated (S1 Table in S2 File). Some of the blotted membranes were stripped for 30 min and re-probed with additional primary antibodies. Therein, β -actin or GAPDH served as an internal control to verify equal loading of proteins.

2.6 Subcutaneous tumor xenograft model

Mouse xenograft models were made by subcutaneously heterotransplanting human HepG2 or derived *DDIT1*^{-/-} cells. Briefly, equal amounts of cells (1×10^7) growing in the exponential phase was suspended in 0.1 ml of serum-free medium and then inoculated subcutaneously at a single site in the right upper back region of male nude mice (BALB/C nu/nu, 4–6 weeks, 18 g). The procedure of injection into all the mice was completed within 30 min. Thereafter, the formation of murine subcutaneous tumor xenografts was successively observed until they were sacrificed. These transplanted tumors were excised immediately after being executed, and also calculated in size by a standard formulate ($V = ab^2/2$). All mice were maintained under standard animal housing conditions with a 12-h dark cycle and also allowed access *ad libitum* to sterilized water and diet, according to the institutional guidelines for care and use of laboratory animals with a license SCXK (JING) 2019–0010. All experimental procedures were approved by the Ethics Committee of Chongqing Medical University.

2.7 Pathohistology with H&E staining

The xenograft tumor tissues were immersed in 4% paraformaldehyde overnight and then transferred to 70% ethanol. In processing cassettes, tumor tissues were dehydrated by a serial alcohol gradient and then embedded in paraffin wax blocks, before being sectioned into a series of 5- μ m-thick slides. Subsequently, the tissue sections were de-waxed in xylene, rehydrated through decreasing concentrations of ethanol and washed in PBS, before being stained

by routine hematoxylin and eosin (H&E) and visualized by microscopy. The resulting images were photographed herein.

2.8 Statistical analysis

Significant differences were statistically determined using the Student's t-test and Multiple Analysis of Variations (MANOVA), except for somewhere indicated. The data are here shown as a fold change (mean \pm S.D.), each of which represents at least three independent experiments that were each performed in triplicate.

3. Results and discussion

3.1 Transcriptional expression of Nrf1 is unaffected by SREBP1

Based on the data obtained from chromatin immunoprecipitation (ChIP) [7] and microarray [20, 21], Manning's group considered that aberrant activation of mTOR in *TSC2*^{-/-}MEFs led to upregulation of Nrf1 by SREBP1. However, we showed that transcriptional expression of Nrf1 was unaffected by SREBP1 knockdown or overexpression in both HepG2 and 7702 cell lines (Fig 1A to 1D). Almost no changes in transactivation of *Nrf1* or *Nrf2* promoter-driven luciferase reporters (*pNrf1-luc* and *pNrf2-luc*, established by Qiu *et al.* [18]) were determined in the cellular response to rapamycin (RAPA), but they were induced by *tert*-butylhydroquinone (tBHQ, a pro-oxidative stressor) rather than the antioxidant N-Acetyl-L-cysteine (NAC) (Fig 1E to 1H). Such discrepancy may result from a strange disparity in the cytosolic to the nuclear distribution of Nrf1 examined by Manning's lab (S1A Fig in S2 File, cropped from their extended data [7]). This is due to the authors showing abnormal accumulation of a peculiar nuclear Nrf1 isoform with a higher molecular weight than its cytosolic isoform, which is never recovered by all relevant subcellular fractionation experiments (cropped in S1B to S1D Fig in S2 File, as reported by our and other groups) [22–25]. Such strange nuclear Nrf1 accumulation revealed by Manning's group seems to challenge against the well-established spatio-temporal character of this ER-localized transcription factor [26, 27].

Intriguingly, further examination showed that abundances of all Nrf1 isoforms were marginally enhanced by silencing of SREBP1 (Fig 2A, *cf. a2 vs a1*). Accordingly increased mRNA levels of Nrf1-target *PSMB6*, *PSMB7* and *PSMB5* (encode the core proteasomal β 1, β 2 and β 5 subunits, respectively [28]) were accompanied by enhanced protein abundances of PSMB6, PSMB7 and slightly PSMB5, concomitantly with SREBP1 knockdown (Fig 2B and 2D). The difference between protein and mRNA levels of PSMB5 (as a key housekeeper in the ubiquitin-proteasomal system) suggests that its protein stability may be finely tuned by the proteasomal feedback regulatory loop, facilitating proteostasis maintenance. Conversely, phosphorylated S6 kinase 1 (pS6K1, required for protein synthesis) protein and mRNA expression levels were significantly down-regulated by *siSREBP1* (Fig 2B and 2D). Thereby, SREBP1 may be directionally responsible for regulating protein synthesis and degradation.

Next, an examination of *siSREBP1*'s effects on the upstream regulators of Nrf1 revealed that evident abundances of DDI1 and DDI2 were increased (Fig 2C). This was accompanied by modest decreases in p97/VCP protein and mRNA levels, while the ER-resident E3 ligase Hrd1 was almost unaffected by silencing of SREBP1 (Fig 2C and 2D). Further scrutinizing two distinct transcriptomic datasets (at <https://www.ncbi.nlm.nih.gov/geo/query/acc.cgi?acc=GSE93980> and = GSE90571) unraveled that, though putative SREBP1-binding sites exist in both the promoter region of Nrf1 and its first exon (S2 Fig in S2 File), no significant changes in transcriptional expression of Nrf1 and other homologous factors (Fig 2E and 2F), as well as almost all proteasomal subunits (S3A and S3B Fig in S2 File), were determined in either

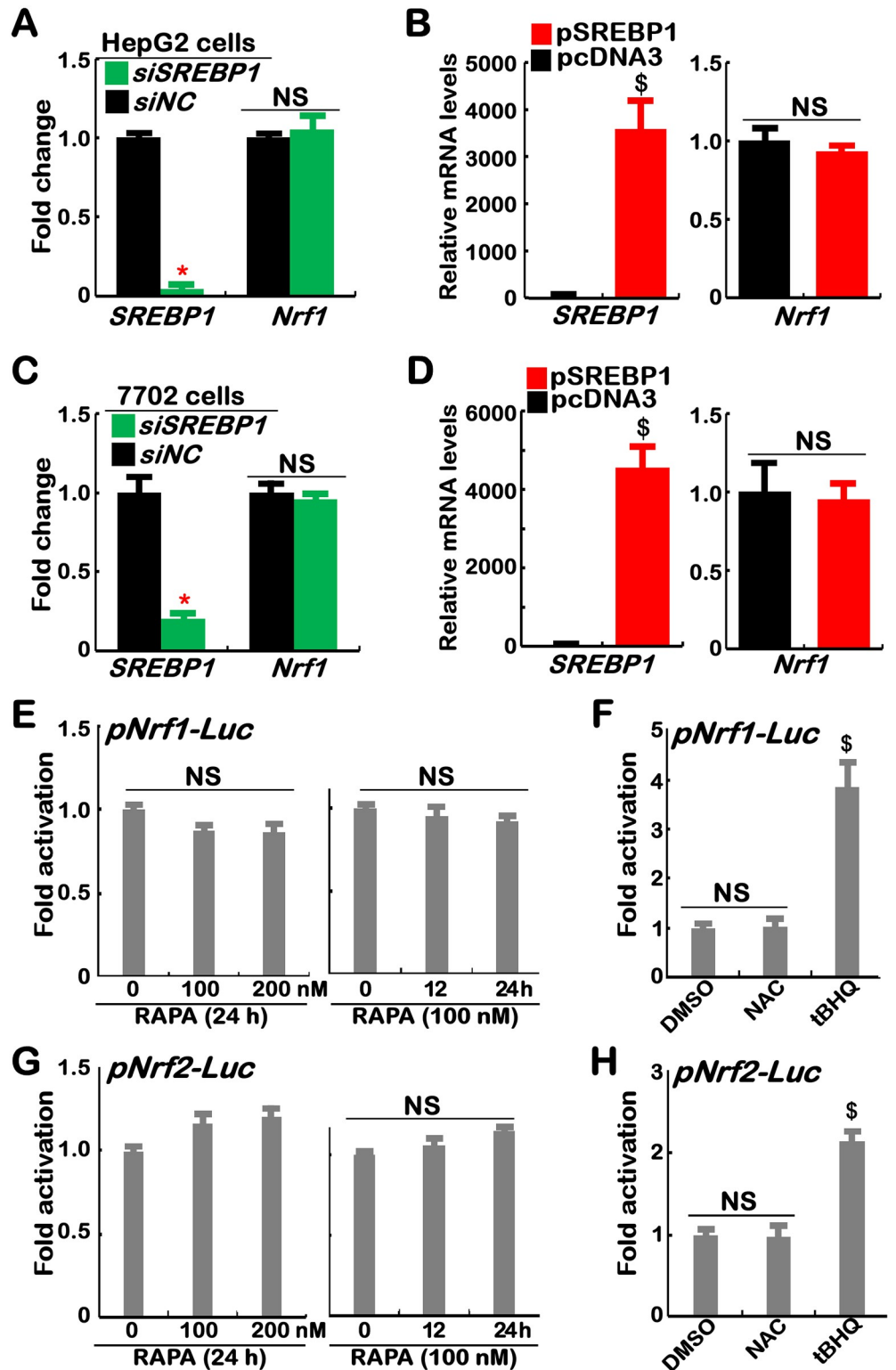


Fig 1. Transcriptional expression of Nrf1 and its reporter is unaffected by SREBP1 or rapamycin. (A to D) Two cell lines of HepG2 (A, B) and L7702 (C, D), that had been transfected with: (A, C) *siNC* (a negative control) or *siSREBP1*; (B, D) a *pSREBP1* expression construct or empty plasmid, were subjected to real-time qPCR analysis of mRNA expression levels of *SREBP1* and *Nrf1* ($n = 3 \times 3$; with significant decreases (*), $p < 0.01$), significant increases (\$), $p < 0.01$), or no significances (NS)). (E to H) HepG2 cells, that had been transfected with *pNrf1-luc* (E, F) or *pNrf2-luc*

(G, H) reporters, along with *pRL-TK* (an internal control) and then treated for 24 h with rapamycin (RAPA, at 0, 100 or 200 nM) (E, G), NAC (10 mM) or tBHQ (50 μ M) (F, H), were subjected to an assay of dual-luciferase activity ($n = 3 \times 3$) with significant increases ($p < 0.01$) or no significances (NS). All the results representing at least three independent experiments, each of which was performed in triplicates, were determined as fold changes (mean \pm S.D.) relative to equivalent controls.

<https://doi.org/10.1371/journal.pone.0294508.g001>

siSREBP2-silencing PANC-1 cells or *SREBP1*^{-/-}MEFs, when compared to their wild-type controls. Collectively, these lines of evidence together demonstrate that Nrf1 is not a direct target of SREBP1, albeit its indirect effects on upstream signaling to Nrf1 cannot be ruled out.

3.2 Discrete effects of rapamycin on the signaling to Nrf1 and proteasome

It was, to my surprise, found that stimulation of HepG2 cells by feeding 10% FBS after 10-h free-serum starvation caused significant decreases in mRNA expression levels of Nrf1 and SREBP1, but their protein abundances were strikingly increased to varying extents (Fig 3A vs 3B and 3C), and markedly diminished or abolished by rapamycin (20 nM, Fig 3B and 3C). Similar results were obtained for S6K (Fig 3C and 3D). Of note, mRNA expression of S6K, but not Nrf1 or SREBP1, was reversed and increased by rapamycin (Fig 3D). Together, these demonstrate that mTOR is likely involved in at least two different mechanisms for regulating Nrf1 and SREBP1 at mRNA and protein expression levels, which are distinctive from controlling its downstream S6K1 by potential ‘bounce-back’ response to mTOR inhibitor.

Further experimental evidence showed that Nrf1-target PSMB5, PSMB6 and PSMB7 (Fig 3B), as well as the upstream signaling DD11, DD12, p97 and Hrd1 (Fig 3E) were significantly upregulated by feeding FBS, of which all those except Hrd1 were also inhibited by rapamycin. However, their mRNA expression levels were down-regulated or unaffected by FBS, but also partially reversed or even enhanced by rapamycin (Fig 3F, cf. left vs right panels). Of note, mRNA expression of *PSMB6* and *DD12* was unaltered or down-regulated by FBS, respectively, but both were also significantly augmented by rapamycin. Overall, these results further indicate that key upstream and downstream signaling molecules of Nrf1 were, to some certain extent, influenced by mTOR involved in distinct hierarchical mechanisms.

3.3 Alteration in the putative processing of Nrf1 in *DDI1/2*-deficient cells

Since Nrf1 and *C. elegans* SKN-1A are activated by DD11 in the proteasomal ‘bounce-back’ response [14, 17, 19], we established a *DDI1*^{-/-} cell line by CRISPR-editing with specific gRNA (S4A Fig in S2 File). Further examination of *DDI1*^{-/-} cells by its DNA sequencing, real-time qPCR and Western blotting revealed that two overlapping nucleotide segments of *DDI1* were deleted from its two alleles (Fig 4A and S4B Fig in S2 File), but the remnant mRNA levels were expressed (Fig 4B and 4C). This implies there may exist alternative mRNA-splicing and in-frame translation start sites to yield two isoforms with distinct molecular weights, as described in yeast DD11 [29]. In addition to *DDI1*^{-/-}, an extra-cytosine base was inserted in the open reading of *DDI2* (S4C Fig in S2 File), thus recalled *DDI1*^{-/-}(*DDI2*^{insC}) collectively. This should be a result of *DDI1*-recognized gRNA targeting the highly conserved sequence of *DDI2* (S4A Fig in S2 File).

Assessment of subcutaneous tumor xenograft mice unraveled that no differences in *in vivo* tumorigenesis and tumor growth of *DDI1*^{-/-}(*DDI2*^{insC}) cells were observed when compared to those of its parent wild-type cells (Fig 4D and 4E). Also, no obvious changes in their tumor pathohistological sections were shown (in Fig 4F). Such *DDI1/2*-deficient cells were then treated with distinct concentrations of MG132 and subjected to determination of

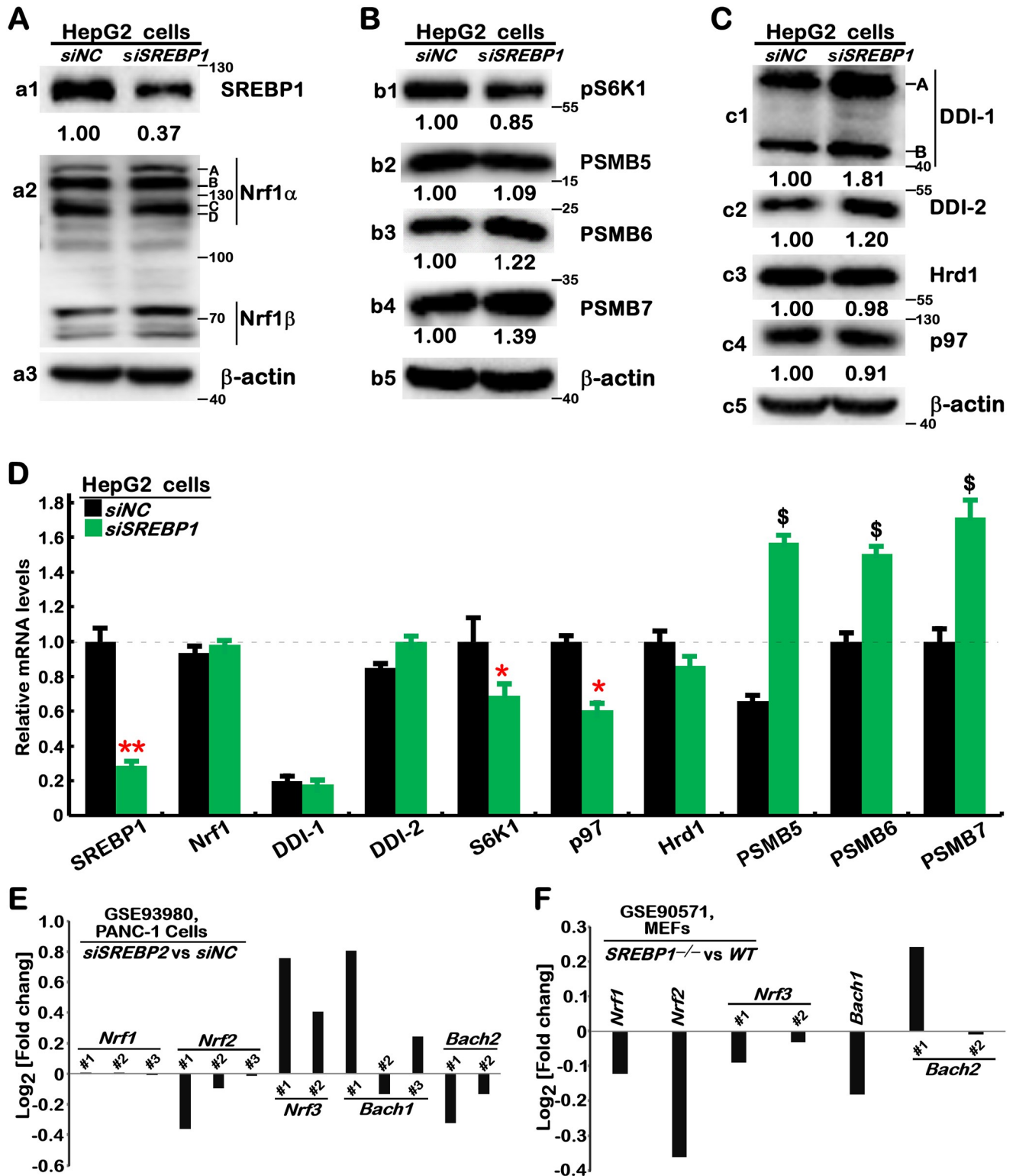


Fig 2. The upstream signaling to Nrf1 and proteasome are to no or fewer degrees, affected in SREBP1-deficient cells. (A to C) HepG2 cells were transfected with siNC or siSREBP1 for 24 h and then subjected to Western blotting with the those indicated antibodies. The intensity of immunoblots representing each protein was quantified by the Quantity-One software and shown on the bottom. (D) The mRNA levels of those examined genes were determined by real-time qPCR and shown as fold changes (mean ± S.D. n = 3×3) with significant decreases (*, $p < 0.01$) or significant increases (\$, $p < 0.01$) relative to equivalent controls. These results are representative of at least three independent experiments, each of which was performed in triplicates. (E, F)

No significant changes in transcriptional expression of Nrf1 and other homologous factors were determined by transcriptomic sequencing of *siSREBP2* vs *siNC* (<https://www.ncbi.nlm.nih.gov/geo/query/acc.cgi?acc=GSE93980>) in PANC-1 cells (E), as well as *SREBP1*^{-/-} vs *Wild-type* MEFs (<https://www.ncbi.nlm.nih.gov/geo/query/acc.cgi?acc=GSE90571>) (F).

<https://doi.org/10.1371/journal.pone.0294508.g002>

putative effects of *DDI1*^{-/-} (*DDI2*^{insC}) on the processing of Nrf1. As anticipated, the results revealed that processed Nrf1 isoforms-C/D were significantly reduced, but its full-length glycoprotein-A and deglycoprotein-B were almost unchanged following treatment of *DDI1*^{-/-} (*DDI2*^{insC}) with a lower dose (1 μM) of MG132 when compared to those measured from wild-type cells (Fig 4G, middle two lanes). By sharp contrast, a higher dose (10 μM) of MG132 treatment of *DDI1*^{-/-} (*DDI2*^{insC}) caused Nrf1 isoforms-C/D to be further diminished or abolished, but its full-length proteins-A/B were not augmented, when compared to their wild-type controls (Fig 4G, right two lanes). These demonstrate a requirement of 26S proteasome for DDI1/2-directed proteolytic processing of Nrf1 because the stability of both proteases *per se* is also controlled by ubiquitin-proteasome pathways [30, 31]. However, endogenous Nrf1 isoforms-A/B was marginally reduced in untreated *DDI1*^{-/-} (*DDI2*^{insC}) cells, where Nrf1 isoforms-C/D were rather faint to be distinguishable from wild-type controls (Fig 4G, left two lanes). This implies that Nrf1α-derived isoforms may be much unstable to be rapidly destructed, but shorter isoforms Nrf1^{ΔN}, Nrf1β and Nrf1γ were unaffected, in *DDI1/2*-deficient cells (Fig 4G, left two lanes). Such seemingly-contradictory data, showing no increased full-length Nrf1 isoforms-A/B in *DDI1*^{-/-} (*DDI2*^{insC}) cells, suggest that ER membrane-associated protein degradation and/or autophagy [32] may also be triggered in possibly ‘bounce-back’ response to *DDI1/2* deficiency.

Intriguingly, wild-type DDI1 and its short isoform in *DDI1*^{-/-} (*DDI2*^{insC}) cells were not enhanced, but slightly reduced by treatment of 1 μM or 10 μM MG132 for 4 h (Fig 4H, h1), and the reduced abundances were further decreased as treatment time was extended to 24 h (Fig 4H, h4) when compared with their untreated controls. By contrast, wild-type DDI2 and its remaining protein in *DDI1*^{-/-} (*DDI2*^{insC}) cells were largely unaffected by 24-h treatment of 1 μM or 10 μM MG132 (Fig 4H, h5), but after 4-h treatment of cells, they became marginally reduced by 1 μM MG132, and also rather augmented by 10 μM MG132 (Fig 4H, h2). Such distinct effects of this proteasomal inhibitor on DDI1 and DDI2 demonstrate that both protease stability may be governed through different mechanisms, albeit these details remain to be elucidated.

3.4 *DDI1/2*-deficient effects on the rapamycin-responsive signaling to Nrf1

Herein, we also found marked decreases in the ectopic expression of Nrf1α-derived isoforms in *DDI1*^{-/-} (*DDI2*^{insC}) cells, when compared to wild-type cells (Fig 5A, a1 and a3). Further comparisons revealed that Nrf1-target proteasomal subunits PSMB5, PSMB6, PSMB7 were accordingly downregulated to considerably lower degrees in *DDI1/2*-deficient cells (Fig 5A, a5 to a7). Also, *DDI1/2* deficiency enabled for significant downregulation of p97 (acting as key upstream signaling to Nrf1) (Fig 5B, b2), in addition to DDI2 and Nrf2 (Fig 5B, b1 and b4). Rather, a relative increase in basal expression of Keap1 (as a negative regulator of Nrf2 [33]) was determined in *DDI1*^{-/-} (*DDI2*^{insC}) cells (Fig 5B, b5). Further real-time qPCR data unraveled various decreases in mRNA expression levels of p97, DDI2, PSMB5, and PSMB7, but not of PSMB6, Nrf1 or Nrf2 in *DDI1/2*-deficient cells (Fig 5C).

As such, abundances of endogenous Nrf1α-derived proteins were significantly increased by feeding 10% FBS for 12–24 h, after 10-h free-serum starvation of *DDI1*^{-/-} (*DDI2*^{insC}) cells, and these FBS-stimulated increases were almost completely abolished by 20 nM rapamycin

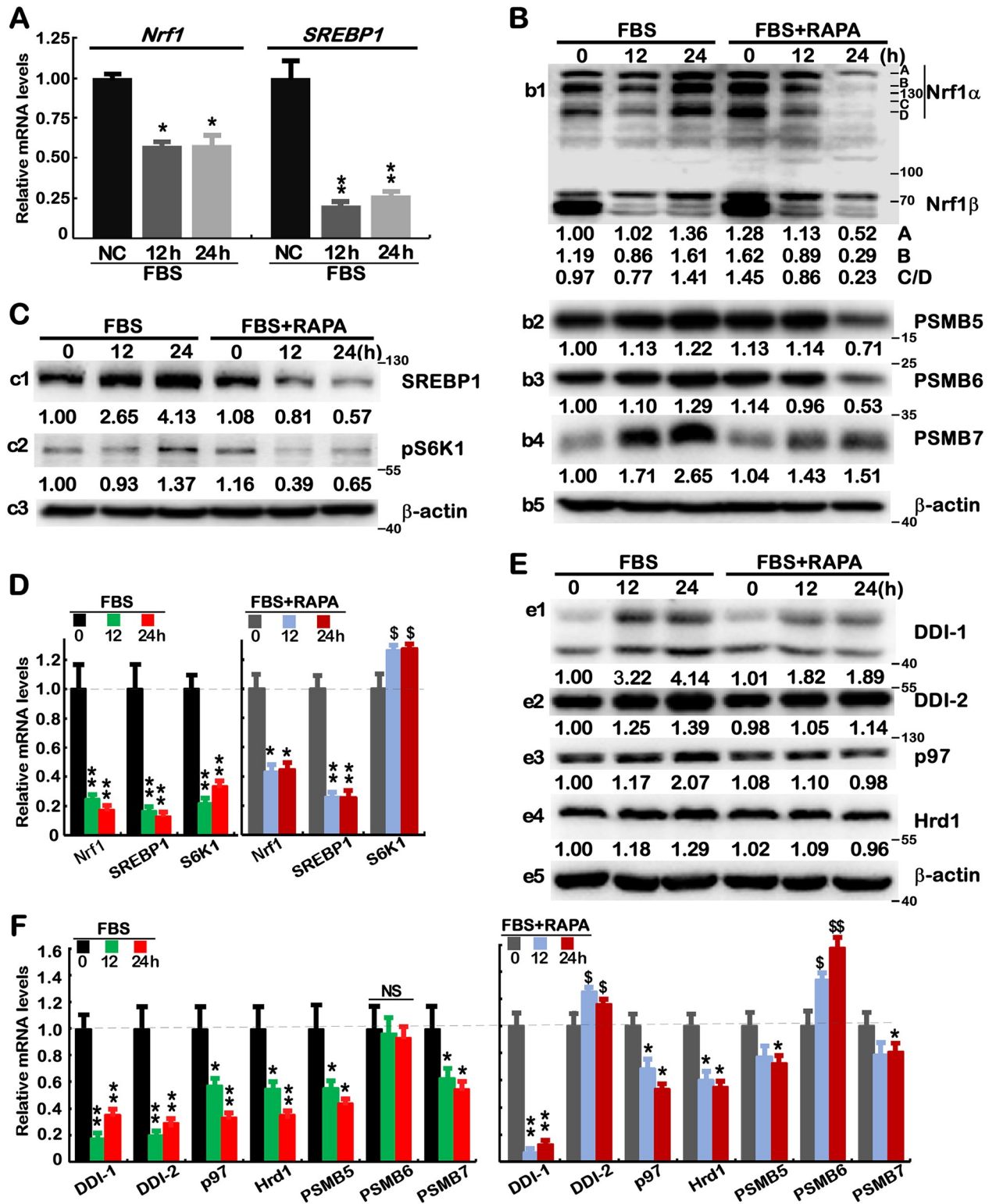


Fig 3. Distinct effects of rapamycin on FBS-altered expression of SREBP1, Nrf1 and relevant signaling molecules. (A) HepG2 cells that had been starved in a serum-free medium for 10 h and then stimulated for 12 or 24 h by feeding 10% FBS, were subjected to real-time qPCR analysis of Nrf1 and SREBP1 at mRNA expression levels. The results were shown as fold changes (mean \pm S.D. n = 3 \times 3) with significant decreases (*, $p < 0.01$; **, $p < 0.001$) relative to the negative controls (NC, with no FBS treatment). (B to F) The free-serum starved HepG2 cells were treated with 10% FBS alone or plus 20 nM RAPA for 0, 12, 24 h, before being subjected to Western blotting with indicated antibodies (B, C, E), in which the intensity of

immunoblots was calculated and shown on the bottom, or real-time qPCR analysis of indicated genes at mRNA levels (*D*, *F*). The results were shown as fold changes (mean \pm S.D. $n = 3 \times 3$) with significant decreases (*, $p < 0.01$; **, $p < 0.001$), significant increases (\$, $p < 0.01$; \$\$, $p < 0.001$), or no significant differences (NS), relative to their equivalent controls. These results are representative of at least three independent experiments, each of which was performed in triplicates.

<https://doi.org/10.1371/journal.pone.0294508.g003>

(Fig 5D, *d1*). By contrast, FBS-stimulated protein expression of Nrf2 was partially suppressed by rapamycin (Fig 5D, *d2*). However, mRNA expression levels of *Nrf1* and *Nrf2* were not induced, but rather repressed by FBS, and such repression was partially or completely reversed by rapamycin, as a result of enhanced mRNA expression of *Nrf2* by this mTOR inhibitor (Fig 5F and 5G). These data indicate there exists a feedback negative regulatory circuit between mRNA and protein expression of Nrf1 and Nrf2, during stimulation or inhibition of mTOR.

Further examinations of *DDI1*^{-/-} (*DDI2*^{insC}) cells uncovered that, upon the absence of DDI1, the remnant DDI2 were still partially enhanced by FBS, and also partially inhibited by rapamycin (Fig 5E). Thereof, FBS-repressed mRNA expression of *DDI2* was fully reversed to a slight increase by rapamycin (Fig 5F and 5G). Similarly, modest stimulation of PSMB5, PSMB6 and PSMB7, abundances by FBS was also partially inhibited by rapamycin (Fig 5E, *e3* to *e5*), but their FBS-repressed mRNA levels were not reversed by rapamycin (Fig 5F and 5G). Such opposite (stimulatory or inhibitory) effects of mTOR on rapamycin-responsive signaling to Nrf1 and downstream proteasome may partially occur in *DDI1/2*-deficient cells, implying that a *DDI1/2*-independent mechanism also accounts for this process.

3.5 Discussion

The ubiquitin proteasome system is crucial for protein degradation and homeostasis, whilst Nrf1 is a key regulatory factor for governing the transcriptional expression of all proteasome subunits. Of note, the transcriptional activation of proteasomes by mTORC1 may be in an Nrf1-dependent manner, and the mTORC1 signaling to upregulation of Nrf1-targeted proteasomal expression profiles was also considered to occur directly by SREBP1, as reported by Manning's group in 2014's Nature [7]. However, a core point from Manning's work on the control of proteasomal proteolysis by mTOR [7] was first challenged by Goldberg's group, arguing that their methodology to measure the rates of protein degradation (labelled by ³⁵S-Met/Cys rather than by ³H-Phe) and the former labelled-protein pulse-chase experimental data appear questionable [34], because the resulting data were considered to be rather inconsistent with those well-established discoveries [35, 36]. Amongst the best-studied actions of mTORC1 are enhancing protein synthesis, and also inhibiting protein degradation by autophagy and proteasomes [35, 37]. While mTORC1 is inactivated during starvation, an increase in proteolysis and autophagy provides a recycling of amino acids for next protein synthesis and energy production. As such, Manning's group showed that inhibition of mTORC1 activity for 16 h or more resulted in a delayed reduction in overall proteolysis by down-regulating transcriptional expression of proteasomal subunits [7]. Similar results were also obtained from ³H-Phe-labelled pulse-chase experiments in their reply to doubt by Goldberg's group [38]. Such discrepant results presented by Manning's and Goldberg's groups are not attributable to nuances in the assays but are inferable due to differences in their chosen culture conditions [38]. A higher dose of rapamycin (300 nM, at least 100-fold more than the IC₅₀ for inhibiting mTORC1) was employed [34] to enable two mTOR kinase complexes (i.e., mTORC1 and mTORC2) to be completely blocked in mouse embryonic fibroblasts (MEFs) with genetic loss of tuberous sclerosis complex 2 (*TSC2*^{-/-},

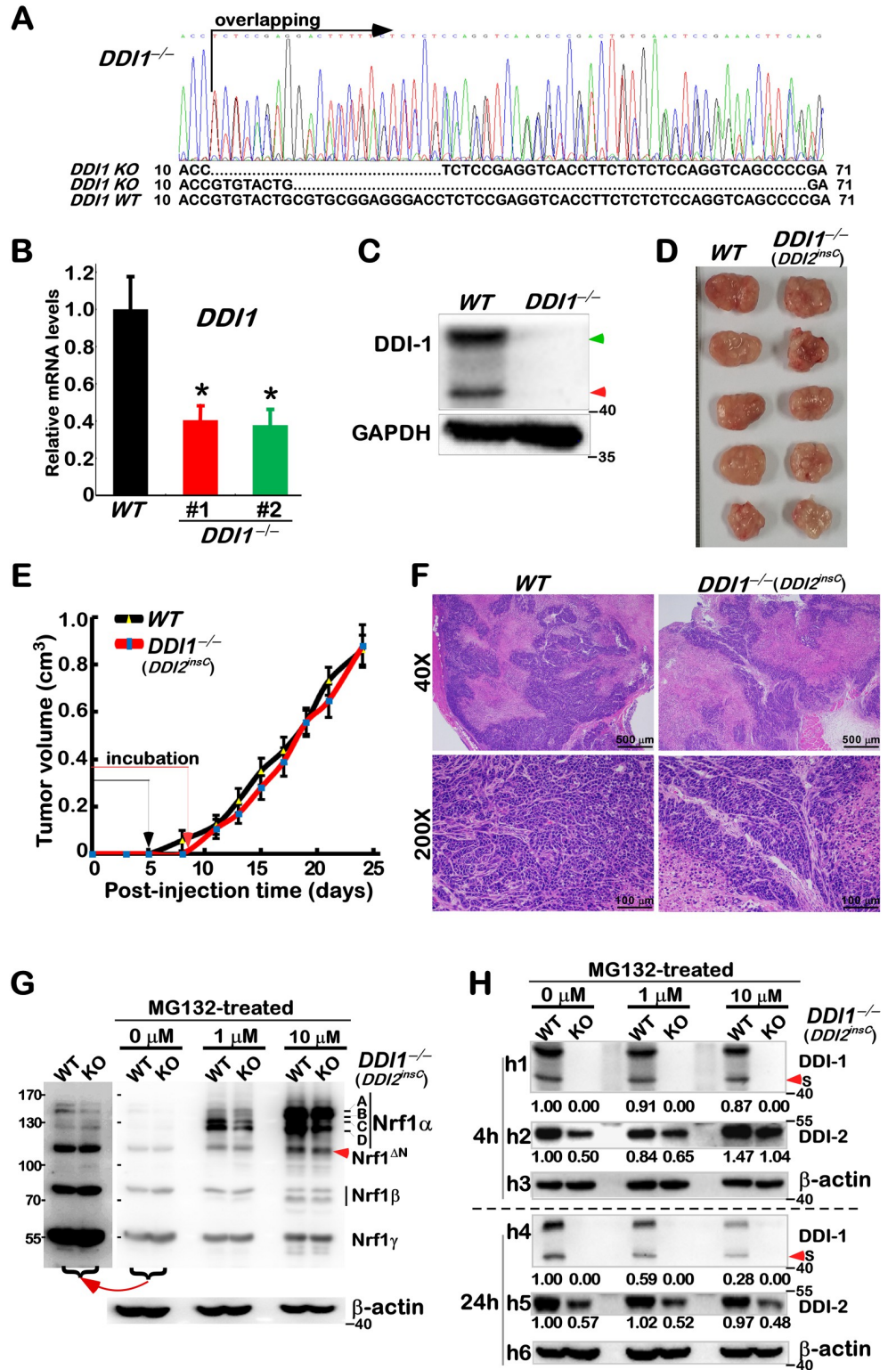


Fig 4. Changed processing of Nrf1 in DDI1/2-deficient cells, but with no different xenograft models. (A) HepG2-derived DDI1^{-/-} cells were initially identified by their genomic DNA-sequencing. The results were shown graphically, along with the alignment of two mutant alleles and wild-type (WT). (B, C) In contrast with WT cells, DDI1^{-/-} cells were further determined by real-time qPCR (B, shown by mean ± S.D. n = 3×3; *, p<0.01) and Western blotting (C), respectively. (D) No different phenotypes of xenograft tumors in nude mice were observed after murine

subcutaneous inoculation of *WT* and *DDI1*^{-/-}(*DDI2*^{insC}) hepatoma cells. (D) No differences in both tumorigenesis and *in vivo* growth between *WT* and *DDI1/2*-deficient and xenograft tumors were measured in size every two days, before being sacrificed. The results are shown as mean ± S.D. (n = 5). (F) The pathohistological images were obtained by routine HE staining of the aforementioned xenograft tumor tissues. (G, H) Both lines of *WT* and *KO* (i.e. *DDI1*^{-/-}*DDI2*^{insC}) cells were treated with MG132 at 0, 1 or 10 μM for 24 h (G, H) or 4 h (H), and then subjected to Western blotting with distinct antibodies against Nrf1, DDI1 or DDI2. In addition, a long-term exposed image was cropped from part of the corresponding gel (G). These results are representative of at least three independent experiments, each of which was performed in triplicates.

<https://doi.org/10.1371/journal.pone.0294508.g004>

that is accompanied by aberrant activation of mTOR). By contrast, a much lower dose (20 nM) of rapamycin for treatment of *TSC2*^{-/-} cells grown in the low-serum conditions [7, 38] enabled for specific separation of effects of mTORC1 from mTORC2, as described by [39]. Just under this status, it was found that *TSC2*^{-/-}-leading activation of mTORC1, rather than mTORC2, stimulates a transcriptional programme involving SREBP1 and Nrf1, leading to an evident enhancement of proteasome-mediated proteolysis exclusively by Nrf1, but not Nrf2 [7, 9].

Since Manning's work was fantastically well done [7, 38] and has gained nearly 200 citations (from the Web of Science at <https://www.webofscience.com>), it is worth interrogating why no more further experimental evidence confirming their findings has been provided to date by any other groups, so far as we know. Of particular concern is a key issue arising from Manning's work, which merits reexamination of whether mTORC1 signaling to upregulation of Nrf1-targeted proteasomal expression profiles occurs directly by SREBP1 because this controversial mechanism remains obscure. Here, we found that transcriptional expression of Nrf1 and all proteasomal subunits is almost unaffected by SREBP1 (or SREBP2), but conversely, Nrf1 contributes to negative regulation of SREBP1 involved in lipid metabolism ([40] and this study). Besides, a Yin-Yang relationship between Nrf1 and SREBP2 for maintaining cholesterol homeostasis was elaborately unraveled in Hotamisligil's laboratory [22]. Recently, a mechanistic study by Xu's group [41] has shown that activity of SREBPs is inhibited by promoting degradation of SREBP-cleavage activating protein (SCAP, a central sensor for cholesterol) through the protein-ubiquitin E3 ligase RNF5-dependent proteasomal pathway, in this process whereby this ligase is recruited to the endoplasmic reticulum (ER)-localized transmembrane protein 33 (TMEM33), a direct target of Nrf1. Therein TMEM33 is also a downstream effector of pyruvate kinase isoform 2 (PKM2), which coordinates together with p97/VCP to control the processing of Nrf1 and SREBPs, as well as their bidirectional regulatory ability to dictate lipid metabolism and homeostasis [41].

Because Nrf1 and SREBP1 manifest distinct topobiological behavior around membranes [42], they are endowed with their respective discrepant spatiotemporal partitioning and unique biological functionality to be though exerted, only after being dislocated from the ER into the nucleus so as to regulate distinct sets of target genes. In this study, we have discovered that Nrf1 is not a direct target of SREBP1, albeit both are involved in rapamycin-responsive signaling networks (Fig 6). Of note, the upstream signaling to Nrf1 dislocation by p97 and its processing by DDI1/2, along with downstream proteasomal expression, should be indirectly monitored by potent mTOR signaling networks, to various certain extents, depending on distinct experimental settings in distinct cell types. Therefore, the potential indirect effects of SREBP1 on DDI1/2 and proteasomes cannot be ruled out. Further experimental evidence from *DDI1*^{-/-}(*DDI2*^{insC}) cells demonstrates that putative effects of mTOR on the rapamycin-responsive signaling to Nrf1 and proteasome may also be executed partially through a DDI1/2-independent mechanism, albeit the detailed regulatory events remain to be elucidated.

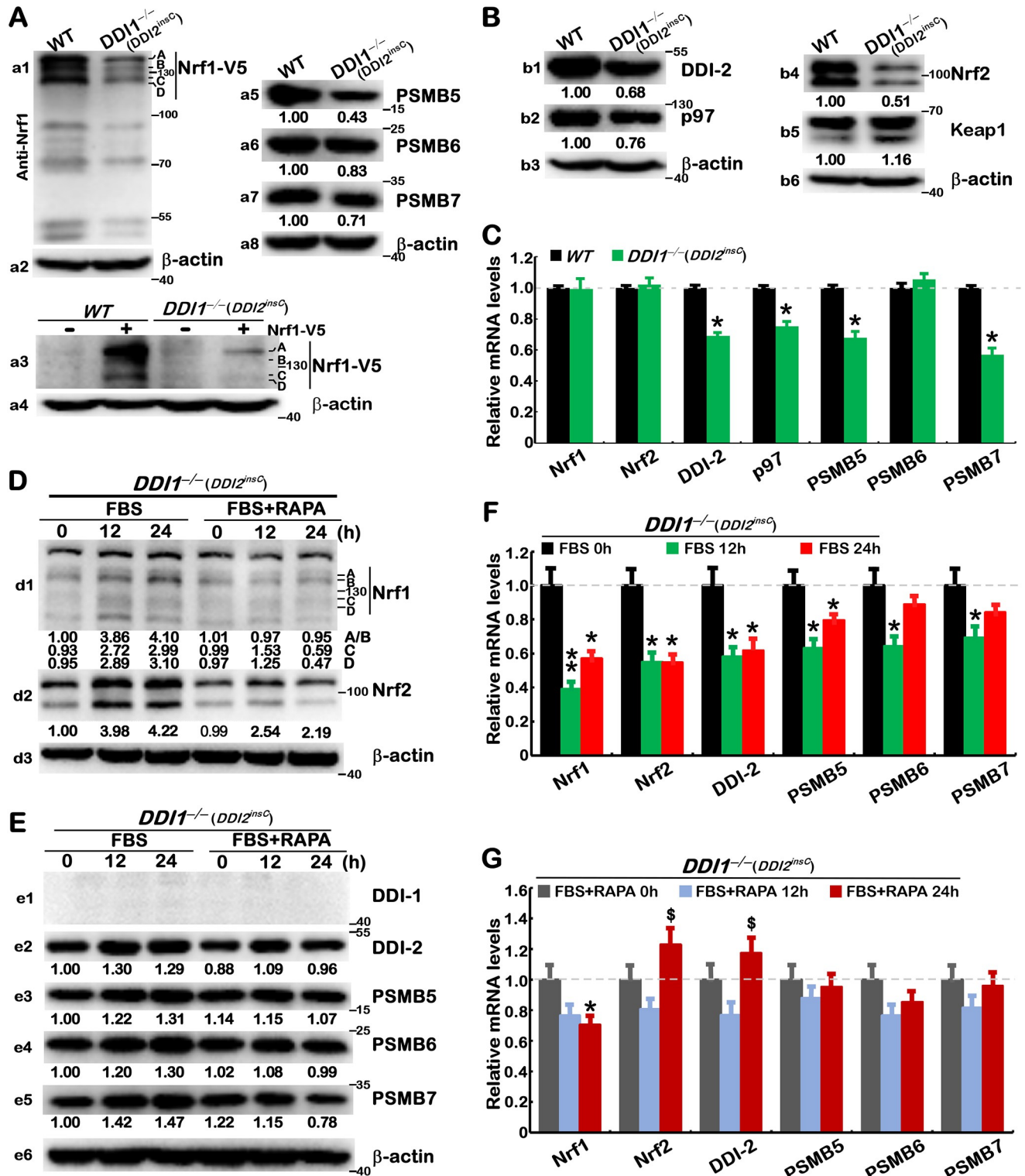


Fig 5. DDI1/2-deficient effects on the rapamycin-responsive signaling to Nrf1 and proteasome. (A) WT and DDI1^{-/-} (DDI2^{insc}) cell lines were transfected with an expression construct for Nrf1-V5 (+) or empty pcDNA3 vector (-) and then examined by Western blotting with V5 antibody (a1, a3); β-actin acts as a loading control. Their untransfected cells were also measured by immunoblotting of the core proteasomal subunits PSMB5, PSMB6, and PSMB7 (a5 to a7). (B) Further immunoblotting of DDI2, p97, Nrf2 and Keap1 was conducted in untreated WT and DDI1^{-/-} (DDI2^{insc}) cell lines. (C) Both cell lines were further assessed by real-time qPCR analysis of mRNA expression levels. The results were shown as fold changes (mean ± S.D. n = 3×3) with a significant decrease (*, p<0.01) relative to control values. (D to G) The starved DDI1^{-/-} (DDI2^{insc}) cells were treated by feeding 10% FBS alone or plus

RAPA (20 nM) for 0, 12 or 24 h, and then subjected to Western blotting with distinct antibodies (*D, E*) and real-time qPCR analysis of mRNA expression (*F, G*). The resulting data were shown as fold changes (mean \pm S.D. $n = 3 \times 3$), with a significant decrease (*, $p < 0.01$) or significant increases (\$, $p < 0.01$) relative to control values. The results are representative of at least three independent experiments, each of which was performed in triplicates.

<https://doi.org/10.1371/journal.pone.0294508.g005>

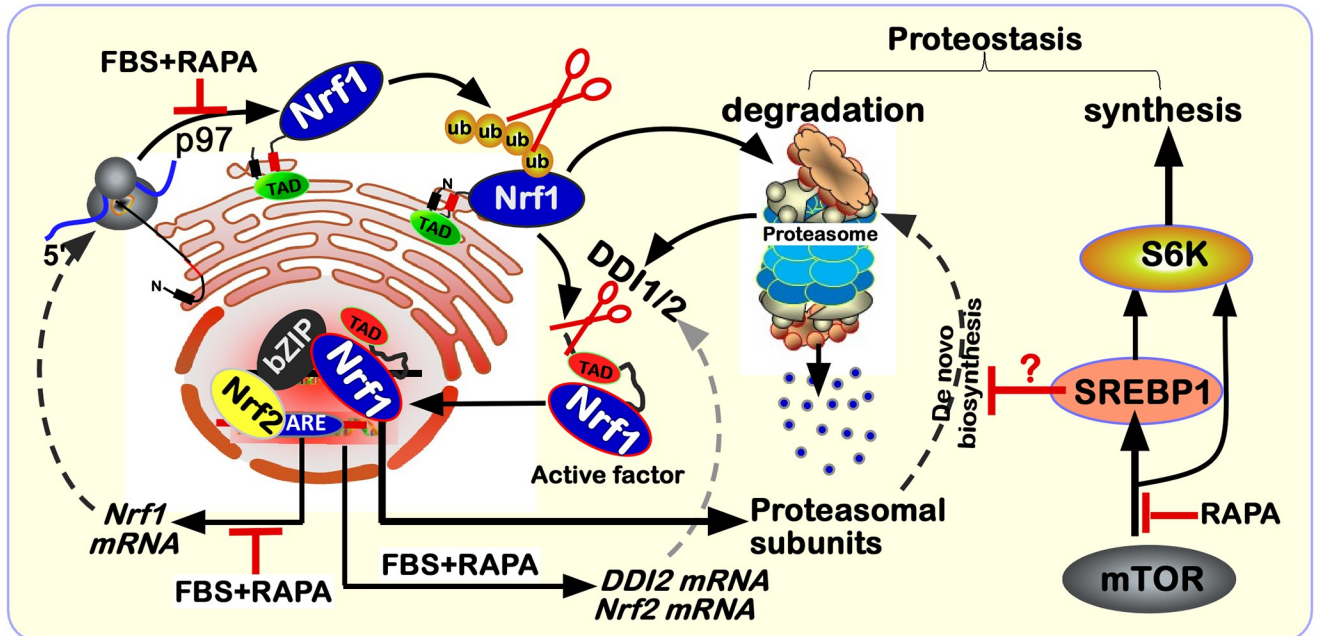


Fig 6. A model is proposed for a better understanding of the rapamycin-responsive signaling to Nrf1 and proteasomes. The ER-localized Nrf1 manifests its unique topobiological behavior with specific dislocation by p97 and proteolytic processing by DDI1/2 and proteasomes, to give rise to a mature N-terminally-truncated isoform of this CNC-bZIP factor that mediates proteasomal transcriptional expression. Herein, we found that Nrf1 is not a direct target of SREBP1 (required for lipid and cholesterol metabolism) and Nrf1-target proteasomal transcription is almost not induced, but rather inhibited by SREBP1, although both factors are also integrated into the rapamycin-responsive signaling networks. Besides, differential expression levels of p97, DDI1/2 and Nrf2 may be monitored by mTOR signaling, to various certain extents, depending on the distinct experimental settings in distinct cell types. These detailed regulatory mechanisms should warrant in-depth studies.

<https://doi.org/10.1371/journal.pone.0294508.g006>

Supporting information

S1 File. The original files of all western blots results in Figs 2–5.
(PDF)

S2 File. A supplement file containing S1–S4 Figs and S1 Table.
(PDF)

Acknowledgments

We thank to all those present and past members of Prof. Zhang's laboratory (at Chongqing University, China) for giving critical discussion and invaluable help with this work.

Author Contributions

Conceptualization: Keli Liu, Yiguo Zhang.

Data curation: Keli Liu, Shaofan Hu, Lu Qiu.

Formal analysis: Keli Liu, Lu Qiu.

Funding acquisition: Yiguo Zhang.

Investigation: Keli Liu, Shaofan Hu.

Methodology: Keli Liu, Shaofan Hu, Lu Qiu, Meng Wang.

Project administration: Guiyin Sun, Yiguo Zhang.

Resources: Guiyin Sun, Yiguo Zhang.

Software: Keli Liu, Meng Wang.

Supervision: Keli Liu, Zhengwen Zhang, Yiguo Zhang.

Validation: Keli Liu.

Visualization: Keli Liu, Meng Wang.

Writing – original draft: Keli Liu.

Writing – review & editing: Zhengwen Zhang, Yiguo Zhang.

References

1. Lopez-Otin C. and Kroemer G., Hallmarks of health. *Cell*, 2021. 184(7): p. 1929–1939. <https://doi.org/10.1016/j.cell.2021.03.033> PMID: 33798440
2. Hanahan D. and Weinberg R.A., Hallmarks of cancer: the next generation. *Cell*, 2011. 144(5): p. 646–74. <https://doi.org/10.1016/j.cell.2011.02.013> PMID: 21376230
3. Lopez-Otin C., et al., The hallmarks of aging. *Cell*, 2013. 153(6): p. 1194–217. <https://doi.org/10.1016/j.cell.2013.05.039> PMID: 23746838
4. Kotas M.E. and Medzhitov R., Homeostasis, inflammation, and disease susceptibility. *Cell*, 2015. 160(5): p. 816–827. <https://doi.org/10.1016/j.cell.2015.02.010> PMID: 25723161
5. Osinalde N., et al., Impaired proteostasis in rare neurological diseases. *Semin Cell Dev Biol*, 2019. 93: p. 164–177. <https://doi.org/10.1016/j.semcdb.2018.10.007> PMID: 30355526
6. Toyama B.H. and Hetzer M.W., Protein homeostasis: live long, won't prosper. *Nat Rev Mol Cell Biol*, 2013. 14(1): p. 55–61. <https://doi.org/10.1038/nrm3496> PMID: 23258296
7. Zhang Y., et al., Coordinated regulation of protein synthesis and degradation by mTORC1. *Nature*, 2014. 513(7518): p. 440–3. <https://doi.org/10.1038/nature13492> PMID: 25043031
8. Aramburu J., et al., Transcriptional regulation of the stress response by mTOR. *Sci Signal*, 2014. 7(332): p. re2. <https://doi.org/10.1126/scisignal.2005326> PMID: 24985347
9. Zhang Y. and Manning B.D., mTORC1 signaling activates NRF1 to increase cellular proteasome levels. *Cell Cycle*, 2015. 14(13): p. 2011–7. <https://doi.org/10.1080/15384101.2015.1044188> PMID: 26017155
10. Laplante M. and Sabatini D.M., An emerging role of mTOR in lipid biosynthesis. *Curr Biol*, 2009. 19(22): p. R1046–52. <https://doi.org/10.1016/j.cub.2009.09.058> PMID: 19948145
11. Sakai J. and Rawson R.B., The sterol regulatory element-binding protein pathway: control of lipid homeostasis through regulated intracellular transport. *Curr Opin Lipidol*, 2001. 12(3): p. 261–6. <https://doi.org/10.1097/00041433-200106000-00004> PMID: 11353328
12. Wang B. and Tontonoz P., Liver X receptors in lipid signalling and membrane homeostasis. *Nat Rev Endocrinol*, 2018. 14(8): p. 452–463. <https://doi.org/10.1038/s41574-018-0037-x> PMID: 29904174
13. Sirkis R., Gerst J.E., and Fass D., Ddi1, a eukaryotic protein with the retroviral protease fold. *J Mol Biol*, 2006. 364(3): p. 376–87. <https://doi.org/10.1016/j.jmb.2006.08.086> PMID: 17010377
14. Lehrbach N.J. and Ruvkun G., Proteasome dysfunction triggers activation of SKN-1A/Nrf1 by the aspartic protease DDI-1. *Elife*, 2016. 5: p. e17721. <https://doi.org/10.7554/eLife.17721> PMID: 27528192
15. Motyan J.A., Miczi M., and Tozser J., Dimer Interface Organization is a Main Determinant of Intermonomeric Interactions and Correlates with Evolutionary Relationships of Retroviral and Retroviral-Like Ddi1 and Ddi2 Proteases. *Int J Mol Sci*, 2020. 21(4): p. 1352. <https://doi.org/10.3390/ijms21041352> PMID: 32079302

16. Siva M., et al., Human DNA-Damage-Inducible 2 Protein Is Structurally and Functionally Distinct from Its Yeast Ortholog. *Sci Rep*, 2016. 6: p. 30443. <https://doi.org/10.1038/srep30443> PMID: 27461074
17. Xiang Y., et al., Topovectorial mechanisms control the juxtamembrane proteolytic processing of Nrf1 to remove its N-terminal polypeptides during maturation of the CNC-bZIP factor. *Toxicol Appl Pharmacol*, 2018. 360: p. 160–184. <https://doi.org/10.1016/j.taap.2018.09.039> PMID: 30268580
18. Qiu L., et al., Oncogenic Activation of Nrf2, Though as a Master Antioxidant Transcription Factor, Liberated by Specific Knockout of the Full-Length Nrf1 alpha that Acts as a Dominant Tumor Repressor. *Cancers*, 2018. 10(12): p. 520.
19. Xiang Y., et al., Mechanisms controlling the multistage post-translational processing of endogenous Nrf1 alpha/TCF11 proteins to yield distinct isoforms within the coupled positive and negative feedback circuits. *Toxicol Appl Pharmacol*, 2018. 360: p. 212–235.
20. Rome S., et al., Microarray analyses of SREBP-1a and SREBP-1c target genes identify new regulatory pathways in muscle. *Physiol Genomics*, 2008. 34(3): p. 327–37.
21. Reed B.D., et al., Genome-wide occupancy of SREBP1 and its partners NFY and SP1 reveals novel functional roles and combinatorial regulation of distinct classes of genes. *PLoS Genet*, 2008. 4(7): p. e1000133. <https://doi.org/10.1371/journal.pgen.1000133> PMID: 18654640
22. Widenmaier S.B., et al., NRF1 Is an ER Membrane Sensor that Is Central to Cholesterol Homeostasis. *Cell*, 2017. 171(5): p. 1094–1109 e15. <https://doi.org/10.1016/j.cell.2017.10.003> PMID: 29149604
23. Sotzny F., et al., TCF11/Nrf1-Mediated Induction of Proteasome Expression Prevents Cytotoxicity by Rotenone. *Antioxid Redox Signal*, 2016. 25(16): p. 870–885. <https://doi.org/10.1089/ars.2015.6539> PMID: 27345029
24. Wang M., et al., TCF11 Has a Potent Tumor-Repressing Effect Than Its Prototypic Nrf1alpha by Definition of Both Similar Yet Different Regulatory Profiles, With a Striking Disparity From Nrf2. *Front Oncol*, 2021. 11: p. 707032.
25. Zhang Y., Lucocq J.M., and Hayes J.D., The Nrf1 CNC/bZIP protein is a nuclear envelope-bound transcription factor that is activated by t-butyl hydroquinone but not by endoplasmic reticulum stressors. *Biochem J*, 2009. 418(2): p. 293–310. <https://doi.org/10.1042/BJ20081575> PMID: 18990090
26. Zhang Y. and Xiang Y., Molecular and cellular basis for the unique functioning of Nrf1, an indispensable transcription factor for maintaining cell homeostasis and organ integrity. *Biochem J*, 2016. 473(8): p. 961–1000. <https://doi.org/10.1042/BJ20151182> PMID: 27060105
27. Yuan J., Zhang S., and Zhang Y., *Nrf1 is paved as a new strategic avenue to prevent and treat cancer, neurodegenerative and other diseases*. *Toxicol Appl Pharmacol*, 2018. 360: p. 273–283.
28. Mao Y., Structure, Dynamics and Function of the 26S Proteasome. *Subcell Biochem*, 2021. 96: p. 1–151. https://doi.org/10.1007/978-3-030-58971-4_1 PMID: 33252727
29. Liu Y., Dai H., and Xiao W., UAS(MAG1), a yeast cis-acting element that regulates the expression of MAG1, is located within the protein coding region of DDI1. *Mol Gen Genet*, 1997. 255(5): p. 533–42. <https://doi.org/10.1007/s004380050526> PMID: 9294038
30. Yip M.C.J., Bodnar N.O., and Rapoport T.A., Ddi1 is a ubiquitin-dependent protease. *Proc Natl Acad Sci U S A*, 2020. 117(14): p. 7776–7781. <https://doi.org/10.1073/pnas.1902298117> PMID: 32193351
31. Dirac-Svejstrup A.B., et al., DDI2 Is a Ubiquitin-Directed Endoprotease Responsible for Cleavage of Transcription Factor NRF1. *Mol Cell*, 2020. 79(2): p. 332–341 e7. <https://doi.org/10.1016/j.molcel.2020.05.035> PMID: 32521225
32. Wang X.J., et al., A novel crosstalk between two major protein degradation systems: regulation of proteasomal activity by autophagy. *Autophagy*, 2013. 9(10): p. 1500–8. <https://doi.org/10.4161/autophagy.25573> PMID: 23934082
33. Baird L. and Yamamoto M., The Molecular Mechanisms Regulating the KEAP1-NRF2 Pathway. *Mol Cell Biol*, 2020. 40(13): p. e00099–20. <https://doi.org/10.1128/MCB.00099-20> PMID: 32284348
34. Zhao J., Garcia G.A., and Goldberg A.L., Control of proteasomal proteolysis by mTOR. *Nature*, 2016. 529(7586): p. E1–2. <https://doi.org/10.1038/nature16472> PMID: 26791731
35. He C. and Klionsky D.J., Regulation mechanisms and signaling pathways of autophagy. *Annu Rev Genet*, 2009. 43: p. 67–93. <https://doi.org/10.1146/annurev-genet-102808-114910> PMID: 19653858
36. Zhao J., et al., mTOR inhibition activates overall protein degradation by the ubiquitin proteasome system as well as by autophagy. *Proc Natl Acad Sci U S A*, 2015. 112(52): p. 15790–7. <https://doi.org/10.1073/pnas.1521919112> PMID: 26669439
37. Saxton R.A. and Sabatini D.M., mTOR Signaling in Growth, Metabolism, and Disease. *Cell*, 2017. 168(6): p. 960–976. <https://doi.org/10.1016/j.cell.2017.02.004> PMID: 28283069
38. Zhang Y. and Manning B.D., Zhang & Manning reply. *Nature*, 2016. 529(7586): p. E2–3.

39. Shimobayashi M. and Hall M.N., Making new contacts: the mTOR network in metabolism and signalling crosstalk. *Nat Rev Mol Cell Biol*, 2014. 15(3): p. 155–62. <https://doi.org/10.1038/nrm3757> PMID: [24556838](https://pubmed.ncbi.nlm.nih.gov/24556838/)
40. Deng R.Z., et al., Loss of Nrf1 rather than Nrf2 leads to inflammatory accumulation of lipids and reactive oxygen species (ROS) in human hepatoma cells, which is alleviated by 2-bromopalmitate. *BioRxiv*, 2021. <https://doi.org/10.1101/2021.09.29.462358>
41. Liu F., et al., PKM2-TMEM33 axis regulates lipid homeostasis in cancer cells by controlling SCAP stability. *EMBO J*, 2021. 40(22): p. e108065. <https://doi.org/10.15252/emj.2021108065> PMID: [34487377](https://pubmed.ncbi.nlm.nih.gov/34487377/)
42. Zhu Y.P., et al., Nach Is a Novel Subgroup at an Early Evolutionary Stage of the CNC-bZIP Subfamily Transcription Factors from the Marine Bacteria to Humans. *Int J Mol Sci*, 2018. 19(10): p. 1–26. <https://doi.org/10.3390/ijms19102927> PMID: [30261635](https://pubmed.ncbi.nlm.nih.gov/30261635/)