

CORRECTION

Open Access



Correction: Palliative radiotherapy for tumor bleeding in patients with unresectable pancreatic cancer: a single-center retrospective study

Taro Shibuki^{1*}, Mitsuhiro Sasaki¹, Shota Yamaguchi¹, Kanae Inoue¹, Tomonao Taira¹, Tomoyuki Satake¹, Kazuo Watanabe¹, Hiroshi Imaoka¹, Shuichi Mitsunaga¹, Takeshi Fujisawa², Kento Tomizawa², Hidekazu Oyoshi², Masaki Nakamura², Hidehiro Hojo² and Masafumi Ikeda¹

Radiation Oncology (2023) 18:178

<https://doi.org/10.1186/s13014-023-02367-5>

After publication of this article [1], the authors reported that in this article the graphics relating to Figs. 1, 2, 3 and 4 captions had been interchanged; the figures should have appeared as shown below.

The original article [1] has been corrected.

The online version of the original article can be found at <https://doi.org/10.1186/s13014-023-02367-5>.

*Correspondence:

Taro Shibuki

tshibuki@east.ncc.go.jp

¹Department of Hepatobiliary and Pancreatic Oncology, National Cancer Center Hospital East, 6-5-1, Kashiwanoha, Kashiwa, Chiba, Japan

²Department of Radiation Oncology and Particle Therapy, National Cancer Center Hospital East, 6-5-1, Kashiwanoha, Kashiwa, Chiba, Japan



© The Author(s) 2023. **Open Access** This article is licensed under a Creative Commons Attribution 4.0 International License, which permits use, sharing, adaptation, distribution and reproduction in any medium or format, as long as you give appropriate credit to the original author(s) and the source, provide a link to the Creative Commons licence, and indicate if changes were made. The images or other third party material in this article are included in the article's Creative Commons licence, unless indicated otherwise in a credit line to the material. If material is not included in the article's Creative Commons licence and your intended use is not permitted by statutory regulation or exceeds the permitted use, you will need to obtain permission directly from the copyright holder. To view a copy of this licence, visit <http://creativecommons.org/licenses/by/4.0/>. The Creative Commons Public Domain Dedication waiver (<http://creativecommons.org/publicdomain/zero/1.0/>) applies to the data made available in this article, unless otherwise stated in a credit line to the data.

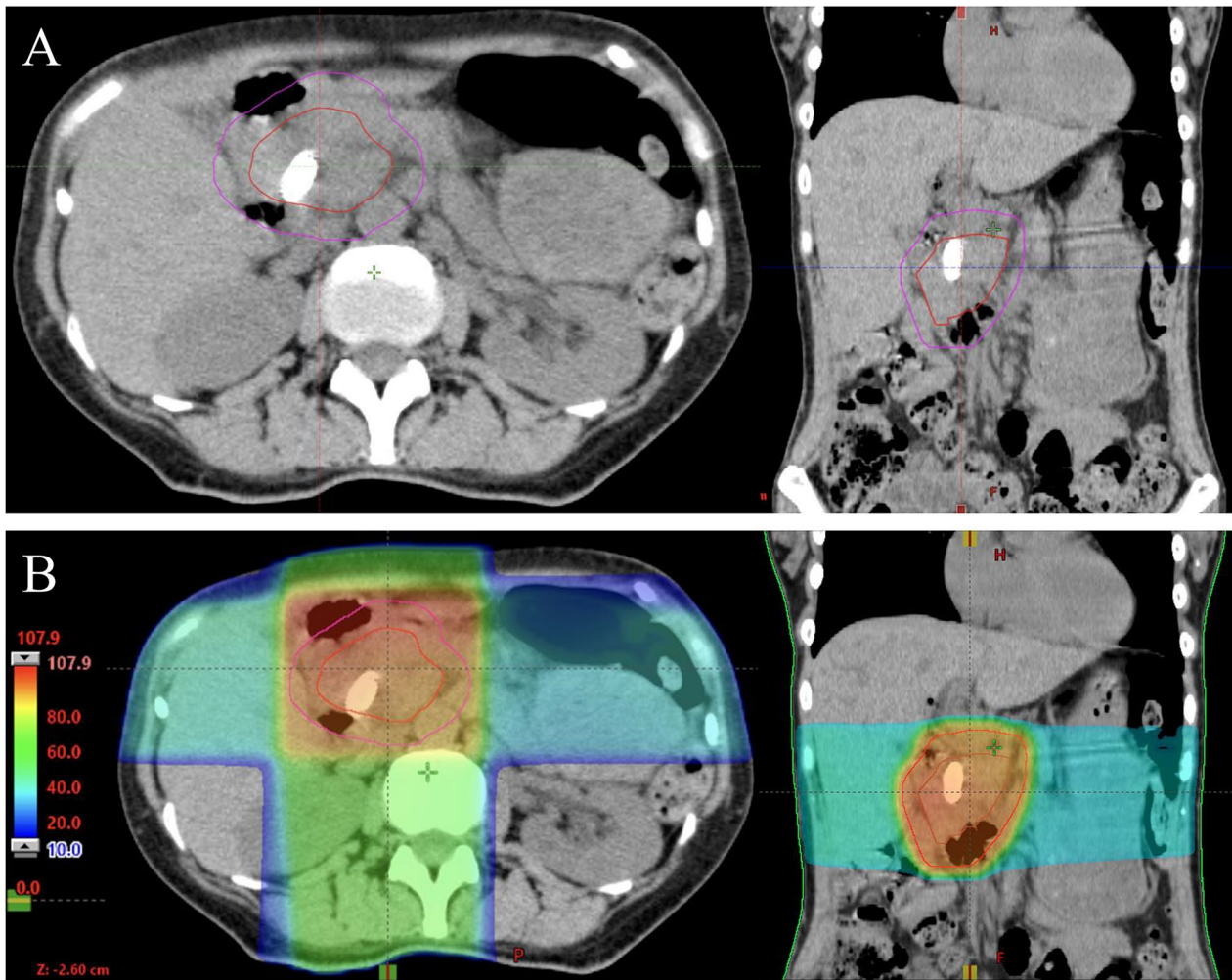


Fig. 1 A Typical clinical target volume (red line) and planning target volume (purple line). B Dose distribution with clinical target volume (red line) and planning target volume (purple line)

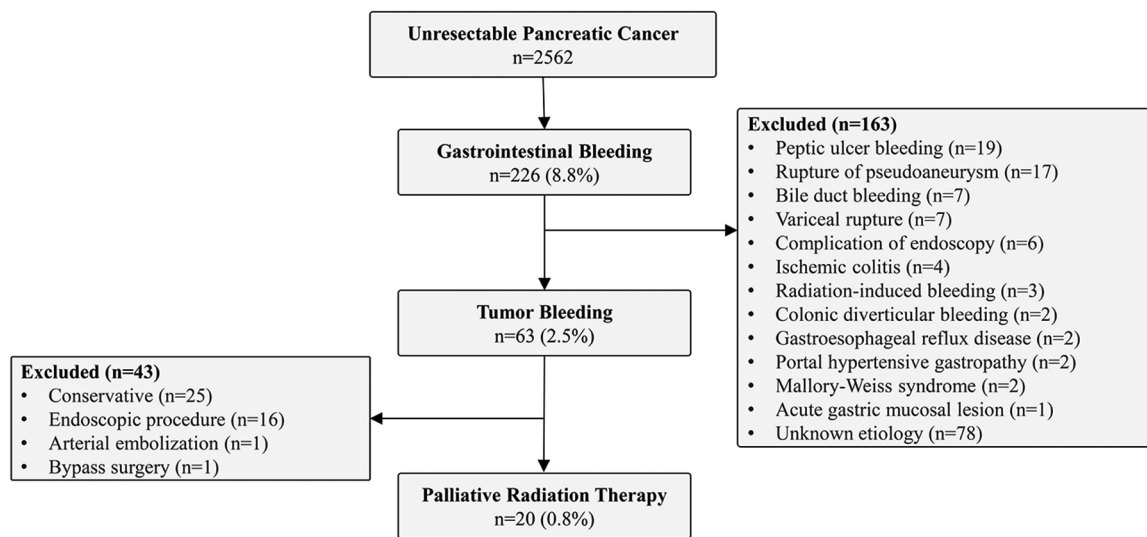


Fig. 2 Flow diagram of enrollment of the study patients

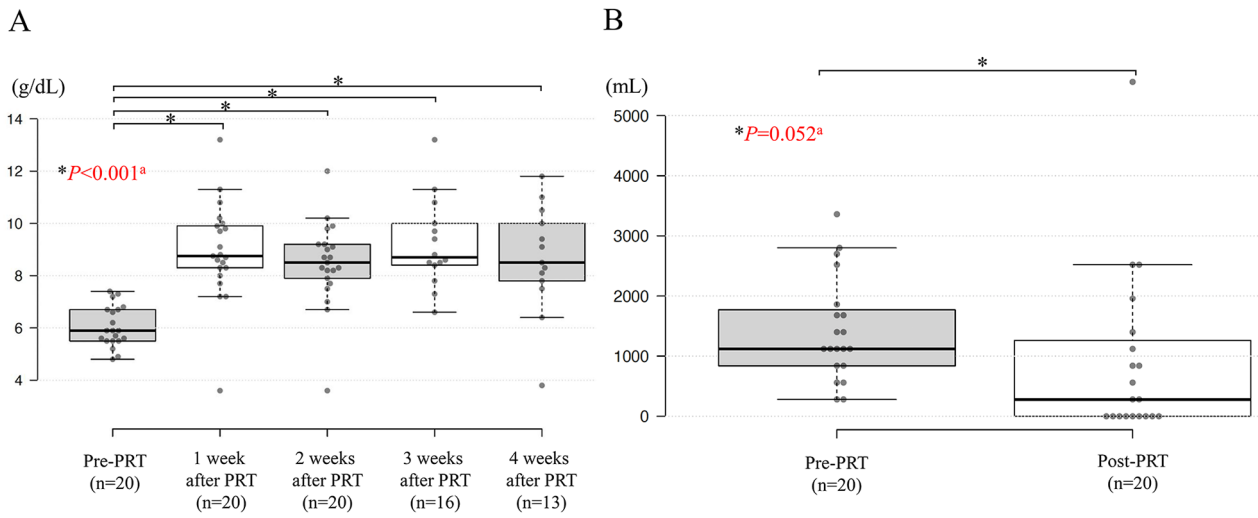


Fig. 3 **A** Hemoglobin levels before and after palliative radiotherapy. **B** The volume of red blood cell transfusion before and after palliative radiotherapy

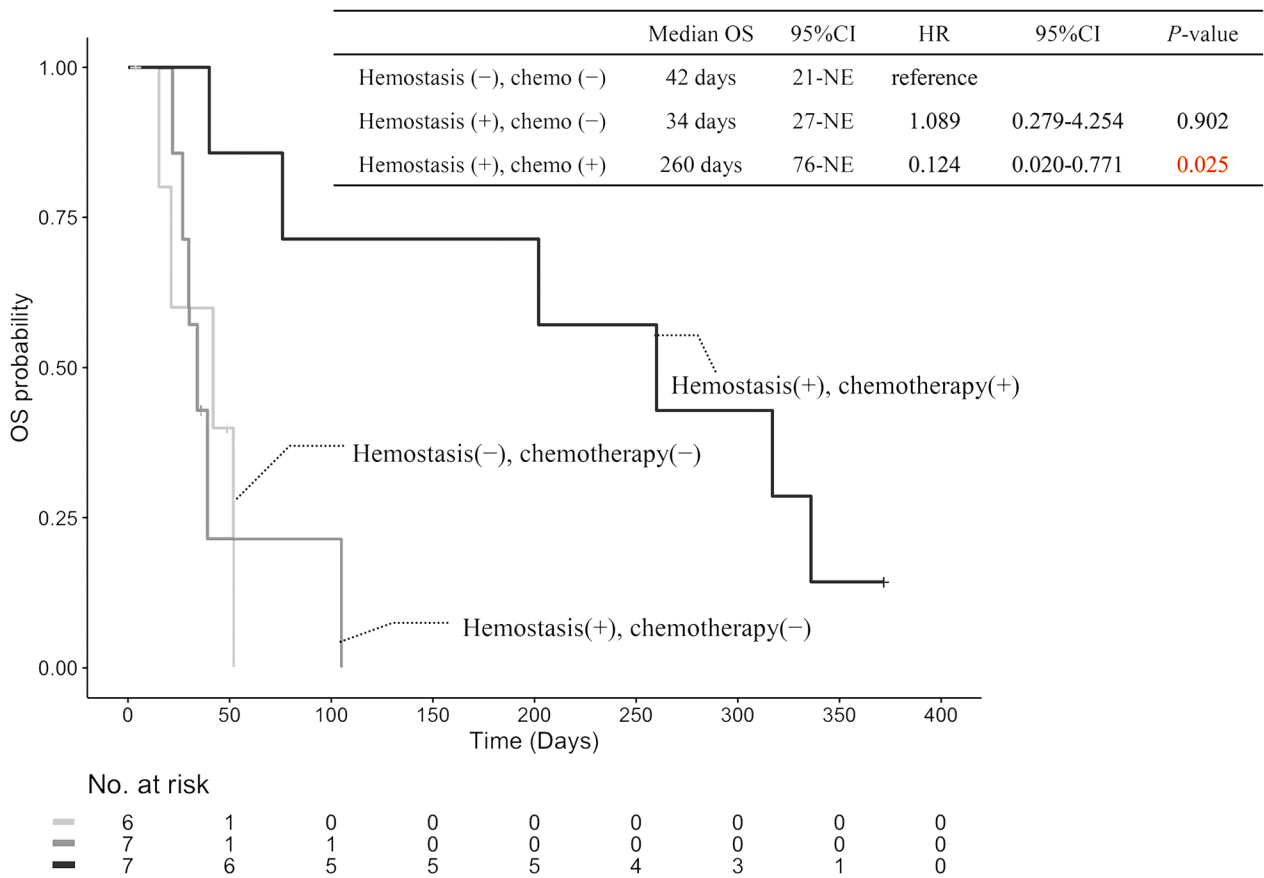


Fig. 4 Kaplan-Meier curves of OS in patients with unresectable PC who received PRT for tumor bleeding. OS overall survival, CI confidence interval, HR hazard ratio, NE not evaluable

Published online: 12 December 2023

retrospective study. *Radiat Oncol.* 2023;18:178. <https://doi.org/10.1186/s13014-023-02367-5>.

References

1. Shibuki T, Sasaki M, Yamaguchi S, et al. Palliative radiotherapy for tumor bleeding in patients with unresectable pancreatic cancer: a single-center

Publisher's Note

Springer Nature remains neutral with regard to jurisdictional claims in published maps and institutional affiliations.