

Article

Potentially Pathogenic *SORL1* Mutations Observed in Autosomal-Dominant Cases of Alzheimer's Disease Do Not Modulate APP Physiopathological Processing

Charlotte Bauer ¹, Eric Duplan ¹ , Peter Saint-George-Hyslop ² and Frédéric Checler ^{1,*} 

¹ INSERM, CNRS, IPMC, Team Labeled “Laboratory of Excellence (LABEX) Distalz”, Université Côte d’Azur, 660 Route des Lucioles, Sophia-Antipolis, 06560 Valbonne, France; bauer@ipmc.cnrs.fr (C.B.); duplan@ipmc.cnrs.fr (E.D.)

² Center for Research in Neurodegenerative Diseases, Department of Medicine, Toronto Western Hospital Research Institute, University Health Network, University of Toronto, Toronto, ON M5G 1L7, Canada; p.hyslop@utoronto.ca

* Correspondence: checler@ipmc.cnrs.fr; Tel.: +33-4-93953460

Abstract: The *SORL1* gene encodes LR11/SorLA, a protein that binds β -amyloid precursor protein (APP) and drives its intracellular trafficking. *SORL1* mutations, occurring frequently in a subset of familial cases of Alzheimer’s disease (AD), have been documented, but their pathogenic potential is not yet clear and questions remain concerning their putative influence on the physiopathological processing of APP. We have assessed the influence of two *SORL1* mutations that were described as likely disease-causing and that were associated with either benign (SorLA⁹²⁴) or severe (SorLA⁵¹¹) AD phenotypes. We examined the influence of wild-type and mutants SorLA in transiently transfected HEK293 cells expressing either wild-type or Swedish mutated APP on APP expression, secreted A β and sAPP α levels, intracellular A β 40 and A β 42 peptides, APP-CTFs (C99 and C83) expressions, α -, β - and γ -secretases expressions and activities as well as A β and CTFs-degrading enzymes. These paradigms were studied in control conditions or after pharmacological proteasomal modulation. We also established stably transfected CHO cells expressing wild-type SorLA and established the colocalization of APP and either wild-type or mutant SorLA. SorLA mutations partially disrupt co-localization of wild-type sorLA with APP. Overall, although we mostly confirmed previous data concerning the influence of wild-type SorLA on APP processing, we were unable to evidence significant alterations triggered by our set of SorLA mutants, whatever the cells or pharmacological conditions examined. Our study, however, does not rule out the possibility that other AD-linked *SORL1* mutations could indeed affect APP processing, and that pathogenic mutations examined in the present study could interfere with other cellular pathways/triggers in AD.

Keywords: *SORL1*; mutations; secretases; APP; A β peptides; C-terminal fragments; neprilysin; proteasome; degradation; cellular localization; transient and stable expressions



Citation: Bauer, C.; Duplan, E.; Saint-George-Hyslop, P.; Checler, F. Potentially Pathogenic *SORL1* Mutations Observed in Autosomal-Dominant Cases of Alzheimer’s Disease Do Not Modulate APP Physiopathological Processing. *Cells* **2023**, *12*, 2802. <https://doi.org/10.3390/cells12242802>

Academic Editor: Jacques P. Tremblay

Received: 29 September 2023

Revised: 24 November 2023

Accepted: 6 December 2023

Published: 8 December 2023



Copyright: © 2023 by the authors. Licensee MDPI, Basel, Switzerland. This article is an open access article distributed under the terms and conditions of the Creative Commons Attribution (CC BY) license (<https://creativecommons.org/licenses/by/4.0/>).

1. Introduction

Alzheimer’s disease (AD) is a complex pathology characterized by either early or late onsets. Most of early onset (EOAD) cases are of familial origin and follow an autosomal dominant transmission [1–3], while late onset (LOAD) cases usually referred to as sporadic AD cases have been shown to be associated with various risk factors [4,5]. The recent occurrence of genome wide association studies allowed elucidating some of these risk factors [6,7]. Indeed, cohorts built with a growing number of cases coupled to powerful bioinformatics allowed analysis of this bulk data and led to a still increasing number of gene candidates that could underlie individual susceptibility to AD pathology.

Contradicting the apparent dichotomy between familial and sporadic AD cases, *SORL1* gene has been implicated in both EOAD and LOAD. Thus, Rogueva and Colleagues [8]

first evidenced a genetic link between *SORL1* and AD. This was further corroborated by independent meta-analyses confirming the link between *SORL1* variants and sporadic AD cases [9–11]. Interestingly, exome sequencing also delineated *SORL1* mutations in both EOAD and LOAD cases [12,13].

SORL1 encodes a sortilin-related receptor with A-type repeats named SorLA (also referred to as LR11) [8]. This protein has been characterized as a neuronal sorting receptor for β -amyloid precursor protein (APP), the precursor of A β peptides that accumulate in AD-affected brains [14]. The ability of SorLA to physically interact with APP drives its lysosomal sorting and was shown to be affected by familial AD mutations [13,15]. This was reported to yield functional consequences on the levels of A β load in cells [13,16] and animals [15]. However, it appears that the phenotypic alterations on A β peptides levels as well as the nature of A β peptides modified varied according to the degree of rarity of the *SORL1* variants [16] as well as cellular and experimental settings. Indeed, unlike in the present work, no studies exhaustively examined the direct influence of SorLA mutations on other steps of the APP physiopathological maturation.

Here, we exhaustively examined the influence of two frequent *SORL1* mutations linked to either benign or severe autosomal dominant cases of AD on the amyloidogenic and non-amyloidogenic APP products, secretases expressions and activity and A β degradation processes.

2. Materials and Methods

2.1. Constructs and Site-Directed Mutagenesis

Wild-type human *SORL1* cDNA, cloned in the pcDNA3.1 (+) vector, was provided by one of us (P. St. G-H). Site-directed mutagenesis kits from Agilent (Santa Clara, CA, USA, QuikChange II) and mutagenesis primers (Eurogentec, Seraing, Belgium) were used to obtain the SorLA⁵¹¹ and SorLA⁹²⁴ mutants (Table 1). All nucleotides modifications were verified by full sequencing of the constructs.

Table 1. Point mutations in bold and corresponding mutant.

hSORL1 Point Mutation (Nucleotide)	Forward Primer	hSorLA Point Mutation (Amino Acid)
G1531C	5'-GGC-TCA-GTG- CGA -AAG-AAC-TTG-GCT-AGC-AA-3'	G511R
A2771G	5'-GAT-GTG-AAG-TGG-CCC- AGT -GGC-ATC-TCT-GTG-3'	N924S

2.2. Cell Cultures and Transfections

Human Embryonic Kidney 293 cells (HEK293) expressing wild-type APP (wt-APP) or swedish-mutated APP (swe-APP) were cultured (5% CO₂, 37 °C) in DMEM (Invitrogen, Carlsbad, CA, USA) containing Fetal Bovine Serum (FBS 10%, Sigma, St. Louis, MO, USA) and antibiotics (50 U/mL penicillin/50 μ g/mL streptomycin, Invitrogen). Wild-type or mutant *SORL1* cDNA were transiently transfected (24 h) using the jetPRIME reagent (Polyplus, Strasbourg, France) (2 μ g or 10 μ g of cDNA in 35 mm or 100 mm dishes, respectively) in control or inhibitor conditions (lactacystin, 5 μ M). In alkalizing conditions, cells were treated for 16 h at 37 °C with NH₄Cl (10 mM). Chinese Hamster Ovary cells (CHO) expressing wt-APP were obtained by stable transfection of the pcDNA4 vector [17]. Cells were maintained in DMEM containing 10% FBS, sodium hypoxanthine-thymidine supplement, and 300 μ M proline. Cells were stably transfected with 2 μ g of wild-type or mutants *SORL1* cDNA according to Lipofectamine protocols (Thermo Fisher Scientific, Waltham, MA, USA). Clones were selected with 250 μ g/mL Zeocin (Invitrogen, Carlsbad, CA, USA).

2.3. Cells Immunostaining

CHO cells grown on coverslips were fixed in paraformaldehyde 4% solution for 10 min, permeabilized with Triton-X 100 (0.1%) for 10 min, saturated in BSA (5%)/Tween20 (0.1%), and probed for 1 h with appropriate primary antibodies: β -Amyloid (clone 6E10, Sigma, St. Louis, MO, USA) mouse monoclonal (1:1000) or SorLA rabbit polyclonal (1:1000, Sigma, St. Louis, MO, USA). After washes, coverslips were incubated for 1 h with Alexa Fluor-488 and Alexa Fluor-594 conjugated antibodies (Molecular Probes, Eugene, OR, USA, 1:1000) and DAPI (1:20,000, Roche, Basel, Switzerland) staining. Finally, the sections were washed with PBS, then mounted onto glass slides and cover-slipped. The stained slices were kept at 4 °C before analysis with confocal microscopy (Zeiss LSM 780 with 63X Objective).

2.4. sAPP α Secretion and Immunoprecipitation of Total Secreted A β

Cells were grown in 6-well plates and allowed to secrete A β for 16 h in OptiMEM (1 mL, Invitrogen, Carlsbad, CA, USA) + 1% FBS (Sigma, St. Louis, MO, USA) containing phosphoramidon (10 μ M, Sigma, St. Louis, MO, USA) in order to prevent A β degradation by neprilysin as described [18]. Media were collected, completed with one tenth of 10X RIPA buffer (Tris-HCl pH 8.0 (100 mM) containing NaCl (1.5 M) and EDTA (50 mM)). sAPP α secretion was measured in 20 μ L of medium collected and deposited on an 8% Tris-Glycine gel. For A β immunoprecipitation, the remaining secretate was incubated overnight with a 100-fold dilution of 6E10 (Eurogentec, Seraing, Belgium) and protein A agarose beads (Invitrogen, Carlsbad, CA, USA). Beads were washed twice with 1X RIPA and subjected to Tris/tricine 16.5% polyacrylamide gel. Proteins were transferred onto nitrocellulose membranes and incubated overnight with the 6E10 monoclonal antibody at a 1/1000 dilution. Immunological complexes were detected with a goat anti-mouse peroxidase-conjugated antibody (1/2000 dilution). Chemiluminescence was recorded using a Luminescence Image Analyser LAS-4000 (FujiFilm, Tokyo, Japan) and quantifications were performed using the MultiGAUGE analyser software V3.0.

2.5. Sandwich ELISA of Secreted and Intracellular A β

Cells were grown in 6-well plates and allowed to secrete A β as described above. Intracellular A β peptides were recovered as described [19]. A β 40 and A β 42 were measured using human A β 40 and A β 42 ELISA kits (Invitrogen, Carlsbad, CA, USA). The minimal detectable amount of human A β 42 is <10 pg/mL and human A β 40 is <6 pg/mL.

2.6. Western Blotting

SorLA, neomycin, APP, sAPP α , CTFs and β -tubulin were separated on Tris-glycine (8%) or Tris-tricine (16.5%) gels. Proteins were transferred onto Hybond-C membranes (GE Healthcare, Boston, MA, USA) and then probed with the following antibody: anti-SorLA (antibodies-online, Aachen, Germany), anti-neomycin (Merck Millipore, Darmstadt, Germany), 22C11 (anti-N-terminal sequence of APP), 2H3 (anti-human A β targeting sequence 1–12 that reacts with the N-terminus of sAPP α but not sAPP β); BR188 (anti-C-terminal sequence of APP, provided by Dr. M. Goedert); anti-PS1-NT raised against residues 1–65 of human PS1 (kind gift from Dr. Fraser); anti-PS2-Loop raised against residues 269–394 corresponding to the from the intracellular loop region of human PS2 (provided by Dr. Thinakaran); anti-APH1aL raised against the C-terminal region of human APH1aL (kind gift from one of us, PSGH); anti-PEN2 raised against the last 24 amino acids of human PEN2 (CR8, Covance); anti-nicastrin was a goat polyclonal antibody raised against the N terminus of human nicastrin (sc-14369, Santa Cruz Biotechnology, Inc., Dallas, TX, USA); anti- β -tubulin (Sigma, St. Louis, MO, USA). Immunological complexes were revealed with either anti-mouse or anti-rabbit peroxidase antibodies (Beckman Coulter, Fullerton, CA, USA), followed by electrochemiluminescence.

2.7. *In Vitro* γ -Secretase Assay

The γ -secretase assay by means of reconstituted membranes was carried out as described previously [20]. An equal amount of membranes preparations was incubated overnight with a recombinant C100-FLAG corresponding to the β -secretase-derived APP fragment harboring a methionine residue in position 1 [20]. A β and AICD-FLAG were detected by Western blotting on a 16.5% Tris/tricine gel and revealed with either anti-A β 2H3 or anti-FLAG antibodies, respectively.

2.8. BACE1 Fluorimetric Assay

BACE1 activity was followed with (7-methoxycoumarin-4-yl)-acetyl-SEVNLD AEFRK(2,4-dinitrophenyl)-RRNH₂; 10 μ M, R&D Systems, Minneapolis, MN, USA) in absence or in the presence of β -secretase inhibitor I (50 μ M, PromoCell, Heidelberg, Germany) as described previously [21]. BACE1 activity corresponds to the β -secretase inhibitor-sensitive fluorescence recorded at 320 and 420 nm as excitation and emission wavelengths, respectively.

2.9. α Secretase Activity on Intact Cells

Plated confluent HEK293 cells were pretreated for 30 min at 37 °C with 1 mL of PBS supplemented with or without the zinc metalloprotease inhibitor *o*-phenanthroline (100 μ M), then the quenched fluorimetric α -secretase substrate JMV2770 (10 μ M, provided by Dr. Hernandez) was directly added to the cultured cells for various times as described [22]. At each incubation time period, medium (100 μ L) was collected and fluorescence was recorded in a 96-wells plates at 320 and 420 nm as excitation and emission wavelengths, respectively. After removal of the last sample, cells were resuspended in lysis buffer (10 mM Tris/HCl, pH 7.5, 150 mM NaCl, 0.5% Triton X-100, 0.5% deoxycholate, and 5 mM EDTA); protein concentrations were determined by the Bradford method [23], and all fluorimetric values were normalized according to protein contents.

2.10. Neprilysin Activity Measurements

Neprilysin (NEP) activity was followed as described previously [24]. Briefly, cell homogenate samples (50 μ g of proteins) were incubated in a final volume of 100 μ L containing NEP substrate (Suc-Ala-Ala-Phe-7AMC, 20 μ M, Sigma, St. Louis, MO, USA) in the absence or presence of the NEP inhibitor phosphoramidon (10 μ M, Sigma, St. Louis, MO, USA). NEP activity was considered as the phosphoramidon-sensitive fluorescence recorded at 390 and 460 nm as excitation and emission wavelengths.

2.11. *In Vitro* Cathepsin B Activity Assay

HEK293 cells were lysed mechanically in homogenization buffer (250 mM sucrose, 1 mM EDTA, 5 mM Hepes pH 7.4) using, firstly, a Dounce homogenizer, then a syringe. The cell suspension was centrifuged for 5 min at 850 $\times g$, then the resulting supernatant was further centrifuged for 90 min at 20,000 $\times g$. The pellet (membrane-enriched fraction) was resuspended in Tris-HCl (10 mM, pH 7.5) and all samples were adjusted to 6 μ g/ μ L before analysis. Cathepsin B activity was monitored as described [19] by incubating samples (60 μ g of protein extracts) in a final volume (100 μ L) of acetate buffer (25 mM, pH 5.5, L-cysteine HCl, 8 mM) containing cathepsin B substrate (carboxybenzoyl-Arg-Arg-7-Amido-4-methylcoumarin (100 μ M, Sigma, St. Louis, MO, USA) in the absence or presence of leupeptin (10 μ M, Sigma, St. Louis, MO, USA). Specific cathepsin B activity was considered as the leupeptin-sensitive fluorescence recorded at 320 nm (excitation) and 420 nm (emission) using a fluorescence plate reader (FLUOstar Omega, BMG Labtech, Ortenberg, Germany). Fluorescence was recorded every 5 min during 150 min and cathepsin B activity was calculated as the slope in initial velocity conditions, i.e., in the linear part of the curve corresponding to the initial 30 min.

2.12. Statistical Analysis

Statistical analyses were performed with PRISM Software V8.0.1 (Graph-Pad Software, San Diego, CA, USA) by using the unpaired Student's *t*-test for pairwise comparisons.

3. Results

Expression and fate of SorLA mutant proteins in wt-APP- and swe-APP-expressing cells.

Since SorLA protein is involved in APP lysosomal sorting [25] and because wt-APP and swe-APP traffic differently [26], we have first examined the influence of *SORL1* mutations on APP physiopathological maturation in both wt-APP- and swe-APP-expressing HEK293 cells. First, we assessed wt and mutant SorLA expressions after *SORL1* cDNA transient transfection. We show that wt, SorLA⁵¹¹ and SorLA⁹²⁴ were similarly expressed in wt- or swe-APP cells (Figure 1A, upper panel). We envisioned the possibility that the proteasome could contribute SorLA degradation. Lactacystin, a proteasome inhibitor [27] that potentiates the recovery of AD-related proteins [28,29] indeed enhances wt, SorLA⁵¹¹ and SorLA⁹²⁴ expressions in both wt- and swe-APP cells (Figure 1B).

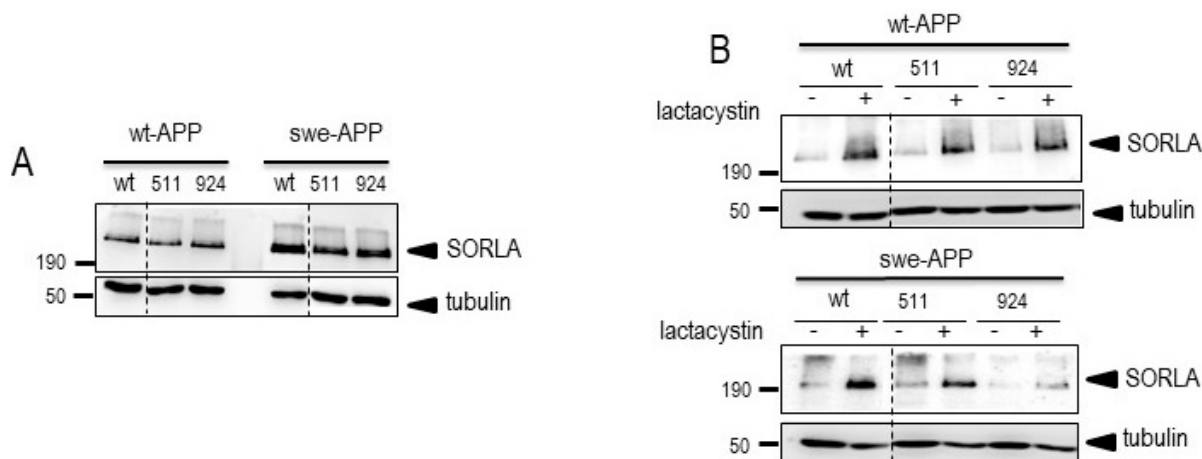


Figure 1. Wild-type and mutated SorLA expressions and fate in wt-APP- and swe-APP-expressing HEK293 cells. cDNA encoding wild-type (SorLA^{wt}), SorLA⁵¹¹ or SorLA⁹²⁴ cDNA were transiently transfected in wt-APP- or swe-APP- expressing HEK293 cells (A) in absence (–) or in the presence (+) of lactacystin (B) as described in experimental procedure. Twenty-four hours after transfection, cells were harvested then SorLA and tubulin expressions were monitored by Western blot as described in the procedures. Gels correspond to one representative blot of 2 to 5 independent analyses. All full gels are shown in a Supplementary Material.

Interestingly, as previously described [16], wt-APP expression appeared increased by wt-SorLA expression, but this augmentation was not potentiated by SorLA mutations (Figure 2A).

In order to confirm these observations, we established stable transfected CHO cells expressing either wild-type or mutated SorLA. In agreement with the above-described data, we detected clones expressing wt-SorLA, SorLA⁵¹¹ and SorLA⁹²⁴ proteins (selected clones for further analyses are indicated in red circles (Supplementary Figure S1A,B)) the expressions of which were enhanced by the proteasome inhibitor MG132 (Supplementary Figure S1C).

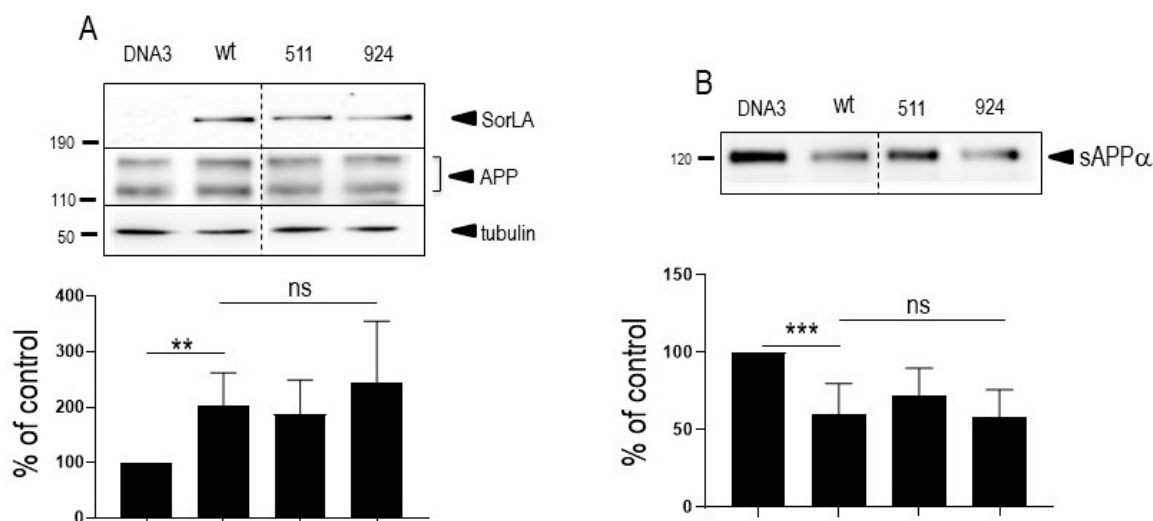


Figure 2. Influence of wild-type and mutated SorLA on endogenous wt-APP expression and secreted sAPP α . Empty pcDNA3 (DNA3), wild-type (SorLA^{wt}), SorLA⁵¹¹ or SorLA⁹²⁴ cDNA were transiently transfected in wt-APP-expressing HEK293 cells (A). Twenty-four hours after transfection, secretates were recovered then cells were harvested and sAPP α and APP expressions were monitored by Western blot as described in experimental procedures. Bars are densitometric analyses expressed as percent of control (DNA3)-transfected cells taken as 100 and are the means \pm SEM of 3 (A) or 4 (B) independent determinations. **, $p < 0.01$; ***, $p < 0.001$; ns, non-statistically significant. All full gels are shown in Supplementary Materials.

These stably transfected cells also proved useful to examine the putative co-localization of SorLA proteins with wt-APP (see expressions of wt-APP in Supplementary Figure S1A–C). Supplementary Figure S1A–C (lower panels) indicates that wt-SorLA, SorLA⁵¹¹ and SorLA⁹²⁴ were readily detectable in these cells and colocalized with wt-APP (Supplementary Figure S1A,B, see merge panels). Closer analysis of wt-APP and wt-SorLA colocalization indicates that both are readily detectable in intracellular vesicular structures, identifiable by punctiform labeling in the cell cytoplasm (Supplementary Figure S2, right panels) and that this colocalization appears to be partly disrupted when SorLA is mutated at 511 or 924 (Supplementary Figure S2, left panel). This above set of data concludes that: (1) wt, SorLA⁵¹¹ and SorLA⁹²⁴ expressions are not modulated by the nature of the APP expressed (wt- or Swe-APP) nor by the cell type and transfection procedures (transient transfection in HEK293 or stable transfection in CHO); (2) wt, SorLA⁵¹¹ and SorLA⁹²⁴ expressions are potentiated by proteasome inhibitors; (3) wt-APP and SorLA co-localize at a subcellular level and 511 and 924 SorLA mutations reduce this colocalization.

3.1. Influence of Wild-Type SorLA and Its Mutants on Endogenous APP Expression and on Its Non-Amyloidogenic Proteolysis

Since SorLA modulates APP trafficking, we first examined whether cellular expressions of wt-APP and/or swe-APP could be affected by SorLA mutations in transiently transfected HEK293 cells. We first observed a slight but statistically significant increase in endogenous wt-APP expression triggered by wt-SorLA expression (Figure 2A). These data appear similar in stably transfected cells, which display an increased wt-APP expression linked to wt-SorLA expression (Supplementary Figure S3A). However, neither endogenous APP (Figure 2A), overexpressed wt-APP (Figure 3A) nor swe-APP (Figure 3B) expressions were affected by SorLA mutations in both transient (Figures 2 and 3) and stable (Supplementary Figure S3A) transfectants.

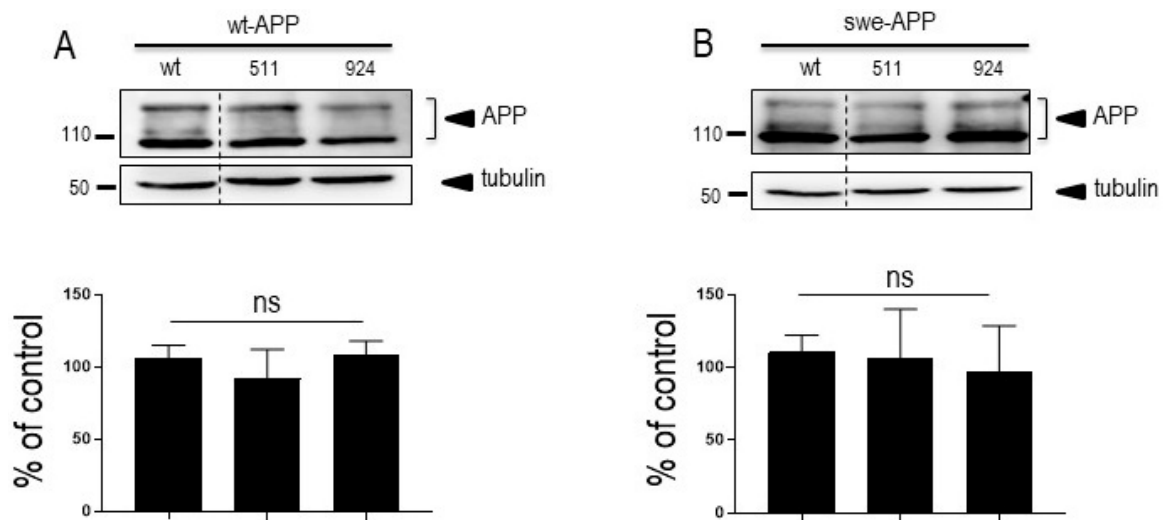


Figure 3. Influence of wild-type and mutated SorLA on wt-APP and swe-APP expressions. cDNA encoding wild-type (SorLA^{wt}), SorLA⁵¹¹ or SorLA⁹²⁴ cDNA were transiently transfected in wt-APP- (A) or swe-APP- (B) expressing HEK293 cells. Twenty-four hours after transfection, cells were harvested then APP expression was monitored by Western blot as described in experimental procedures. Bars are densitometric analyses expressed as percent of control (SorLA^{wt} cDNA transfection in corresponding cells) and are the means \pm SEM of 3 (A) or 4 (B) independent determinations. ns, non-statistically significant. All full gels are shown in Supplementary Materials.

APP undergoes both constitutive and regulated non amyloidogenic processing by α -secretase, which leads to sAPP α secretion and concomitant formation of its C-terminal counterpart C83. We show that endogenous secreted sAPP α was reduced in cells overexpressing wt-SorLA (Figure 2B). As expected, wt-APP expression increases sAPP α in stably transfected cells (compare mock and DNA3 lanes in Supplementary Figure S3B). Of note, the recovery of endogenous sAPP α (Figure 2B) or sAPP α in both stably (compare DNA3 and mutant lanes in Supplementary Figure S3B) and transiently (Figure 4A) transfected cells expressing APP were similarly reduced by wt and mutated SorLA. SorLA mutations also did not affect sAPP α recovery in swe-APP-expressing cells (Figure 4B). This set of data indicating a lack of influence of SorLA mutations on the non-amyloidogenic pathway of APP was further confirmed by direct fluorimetric measurement of α -secretase activity by recording the phenanthroline-sensitive JMV2770-hydrolyzing activity [22] on intact wt- and swe-APP plated cells. Thus, no difference in α -secretase activity in wt- and swe-APP plated cells was observed (Figure 4C,D).

3.2. Influence of Wild-Type SorLA and Its Mutants on A β Peptides and γ -Secretase Expression and Activity

We aimed at examining the influence of SorLA on A β production/recovery in our transient and stably transfected cells. We first measured total A β peptides recovery in secretates of wt-APP-expressing cells by immunoprecipitation (Supplementary Figure S4A) in the presence of the inhibitor phosphoramidon in order to prevent neprilysin-dependent degradation of A β peptides [24,30–32]. As previously reported, wt-SorLA reduces total A β , the recovery of which was similarly triggered by SorLA⁵¹¹ and SorLA¹⁴¹ (Supplementary Figure S4A). It is well known that A β is mainly a mix of A β 40 and A β 42, in which the latter accounts for about 10% of total A β and that slight modifications of A β 42/40 ratio could drive toxic phenotypes in cells [33]. Since the tiny modulation of A β 42 could have been underscored in the total A β immunoprecipitation procedure, we have delineated the respective levels of A β 40 and A β 42 by sensitive ELISA. As previously described, A β 42 levels correspond to about 10–15% of A β 40 (compare values in DNA condition in Supplementary Figure S4B,C). However, we did not observe SorLA-related modifications of A β 40 and A β 42 recoveries, except for the 924 SorLA mutant that triggers a faint increase of secreted

A β 42 (Supplementary Figure S4C) but not A β 40 (Supplementary Figure S4B). Overall, the above data were confirmed in wt-APP-expressing transient transfectants. Thus, neither total A β (Figure 5A) nor A β 40 and A β 42 (Figure 5B) measured in secretates by ELISA were affected by SorLA mutations in APP expressing cells (Figure 5A,B). Total secreted A β was also not affected by SorLA mutants in swe-APP-expressing cells (Figure 5A).

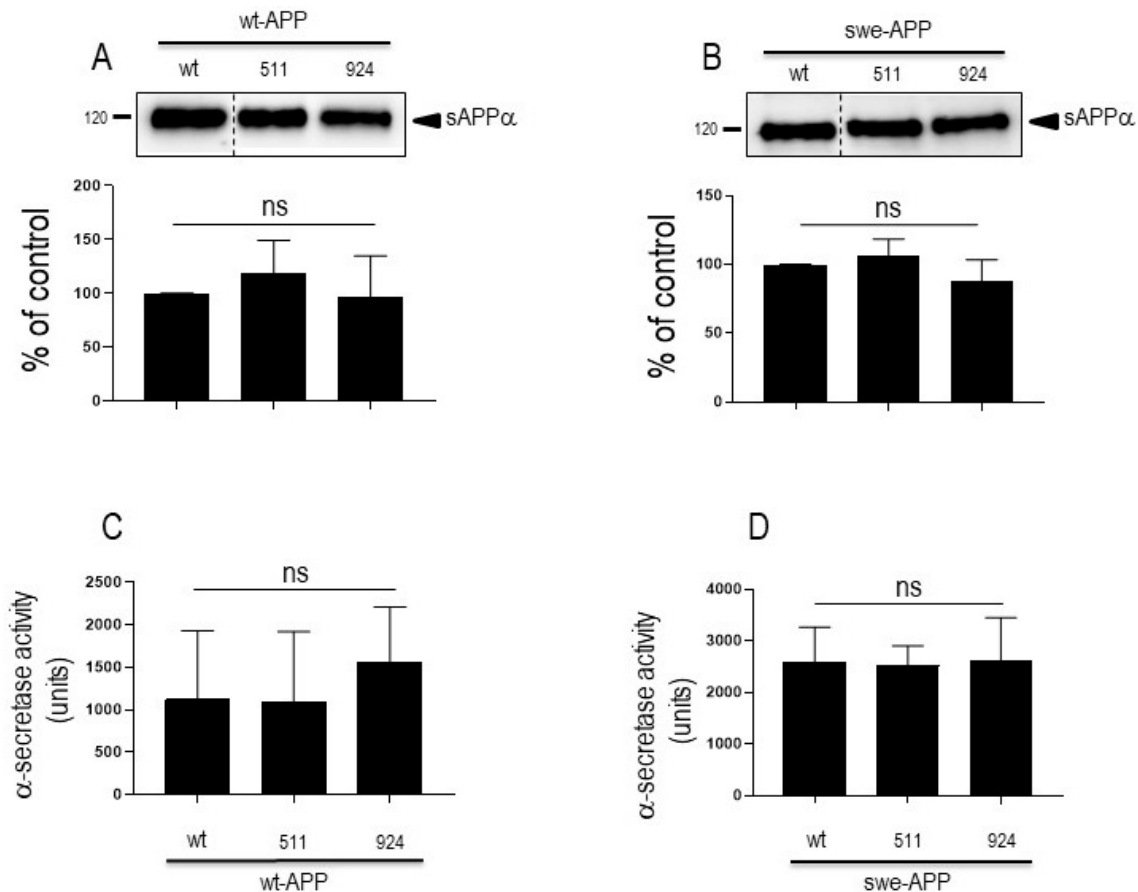


Figure 4. Influence of wild-type and mutated SorLA on secreted sAPP α and α -secretase activity. cDNA encoding wild-type (SorLA^{wt}), SorLA⁵¹¹ or SorLA⁹²⁴ cDNA were transiently transfected in wt-APP- (A,C) or swe-APP- (B,D) expressing HEK293 cells. Twenty-four hours after transfection, cells were harvested then sAPP α expression was measured in secretates (A,B) by Western blotting as described in the experimental procedures. Bars correspond to densitometric analysis of sAPP α expressed as percent of control (sAPP α in SorLA^{wt}-expressing cells) and are the means \pm SEM of 5 (A) or 4 (B) independent experiments. In C and D, α -secretase activity was fluorimetrically recorded on plated cells as described in the experimental procedure. Bars correspond to the phenanthroline-sensitive JMV2770-hydrolysing activity and are the means \pm SEM of 9 (C) and 5 (D) independent experiments. ns, non-statistically significant.

A β peptides can also aggregate and settle intracellularly [34]. Noticeably, A β 42 is particularly prone to aggregation and its intracellular proportion relative to total A β is augmented. We thus examined the levels of both intracellular A β 40 and A β 42 peptides in transiently transfected cells. As expected, intracellular A β 42 levels relative to A β 40 are drastically increased (compare black and empty bars in wt condition in Figure 5C). However, here again, wt- and mutant SorLA-expressions did not affect intracellular levels of A β 40 and A β 42, whatever the APP species examined (Figure 5C).

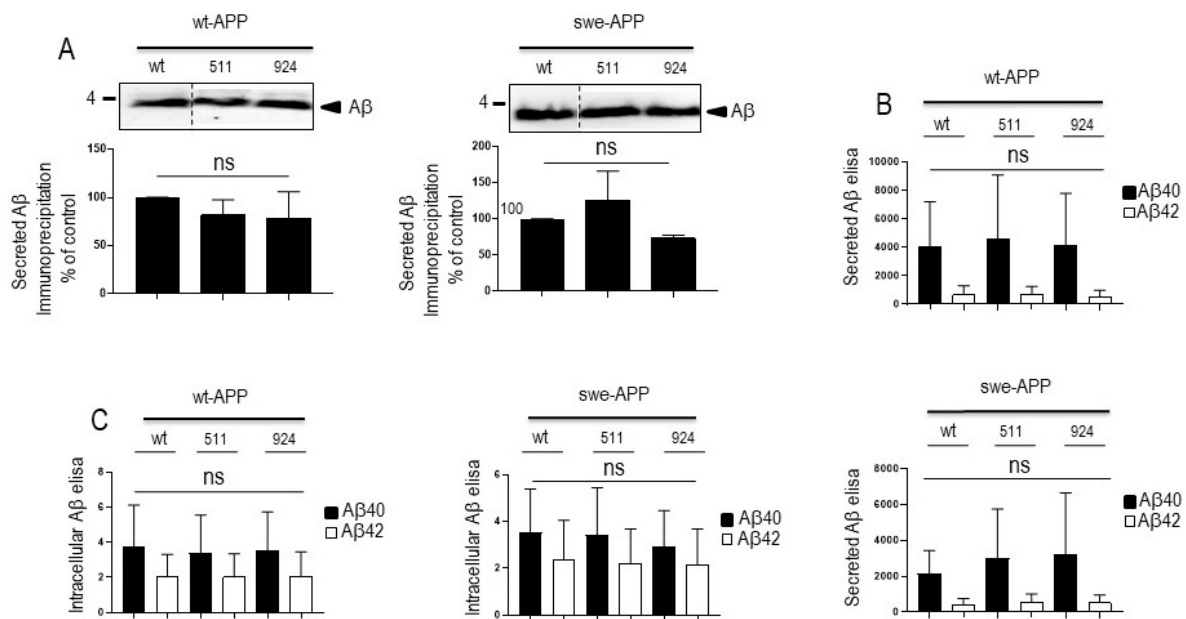


Figure 5. Influence of wild-type and mutated SorLA on secreted and intracellular A β peptides. cDNA encoding wild-type (SorLA^{wt}), SorLA⁵¹¹ or SorLA⁹²⁴ cDNA were transiently transfected in wt-APP- or swe-APP-expressing HEK293 cells (A–C). Twenty-four hours after transfection, total A β (A) recovered in medium was analyzed by immunoprecipitation (A). Bars are densitometric analyses expressed as percent of control (densitometries in SorLA^{wt}-expressing cells) and are the means \pm SEM of 3 experiments. In B and C, cells were analyzed for secreted (B) or intracellular (C) A β 40 and A β 42 (C) by ELISA as described in the experimental procedures. ELISA quantifications are the means \pm SEM of 5 independent experiments. ns, non-statistically significant. All full gels are shown in Supplementary Materials.

The last proteolytic step yielding A β peptides is accounted for by γ -secretase, a heterotetrameric complex composed of ApH1, nicastrin, Pen-2 and presenilin 1 or 2 that harbors the catalytic core [35–39]. Thus, we attempted to confirm the lack of effect of SorLA proteins on secreted and intracellular A β by examining the expression of all components of the γ -secretase complex and by measuring its catalytic activity. Figure 6A clearly shows that none of the components expression was affected by wt- of SorLA mutants, in both wt- and swe-APP-expressing cells. Finally, we have previously reported a procedure aimed at reconstituting functional γ -secretase in cell membranes and by measuring its activity by means of recombinant C100 [20]. This fragment, which corresponds to β -secretase-derived cleavage of APP (to which a N-terminal methionine has been added, see Experimental procedure), allows monitoring A β peptides and their corresponding C-terminal counterpart AICD productions upon γ -secretase cleavage only [20]. Figure 6B indicates that expressions of wt and mutated SorLA do not affect γ -secretase activity measured in swe-APP-expressing cells.

Overall, the above-described data obtained by multiple and complementary approaches consistently demonstrate that SorLA mutations do not affect secreted A β and intracellular A β 40/42, and do not modulate γ -secretase expression and activity.

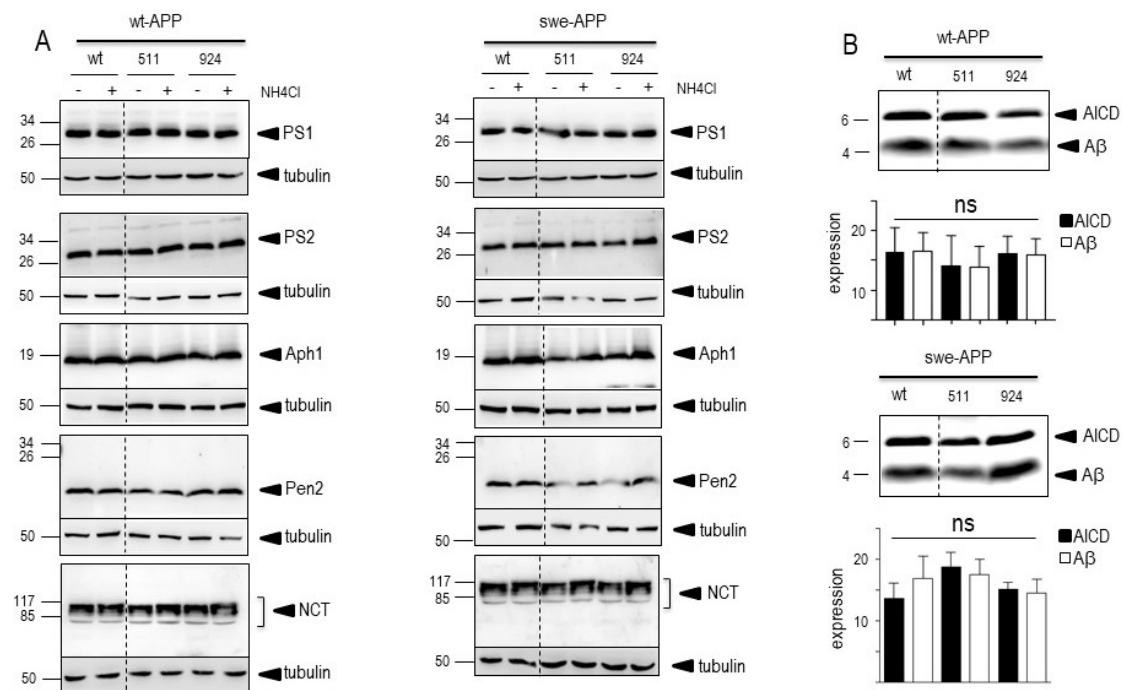


Figure 6. Influence of wild-type and mutated SorLA on γ -secretase expression and activity. cDNA encoding wild-type (SorLA^{wt}), SorLA⁵¹¹ or SorLA⁹²⁴ cDNA were transiently transfected in wt-APP- (A, left panel) or swe-APP- (A, right panel) expressing HEK293 cells, in absence (–) or in the presence (+) of NH₄Cl. Twenty-four hours after transfection, the expressions of presenilin 1 (PS1), presenilin 2 (PS2), Aph1, Pen2, nicastrin and tubulin were analyzed by Western blotting as described in the experimental procedure. In (B), in vitro γ -secretase activity was measured in reconstituted membranes prepared from cells expressing SorLA^{wt} or SorLA mutants as described in the experimental procedures. Bars are densitometric analyses of A β and AICD expressions and are the means \pm SEM of 6 independent experiments. All full gels are shown in Supplementary Materials.

3.3. Influence of Wild-Type SorLA and Its Mutants on APP C-Terminal Fragments and β -Secretase Activity

The amyloidogenic pathway occurring on APP always consists of a rate-limiting catalytic step by the β -secretase BACE1 [40] that yields a C-terminal (CTF) fragment referred to as C99. C99 can undergo a α -secretase-mediated hydrolysis generating another CTF called C83 [41–43]. Subsequently, both C99 and C83 produce the transcription factor AICD upon γ -secretase-mediated cleavage. We examined the putative influence of wt- and mutated SorLA on CTFs expressions in wt-expressing stably transfected cells. As expected, in the control condition, wt-APP increases the levels of both C83 and C99 (compare mock and DNA3 lanes in Supplementary Figure S3), but C83 expression was more abundant than C99 (Supplementary Figure S3C) in accordance with our previous observation that a significant part of C83 production was derived from C99 [41]. In these cells, wt- and mutated SorLA similarly reduce the expressions of C83 and C99 (Supplementary Figure S3C).

As expected, expressions of both CTFs were enhanced by the Swedish mutation (compare wt (–) lanes in Figure 7A,B) in agreement with previous reports on the influence of this APP mutation on β -secretase activity [44,45]. In both wt- and swe-APP-expressing cells, wt- and mutated SorLA similarly reduce the expressions of C83 and C99 (Figure 7A,B).

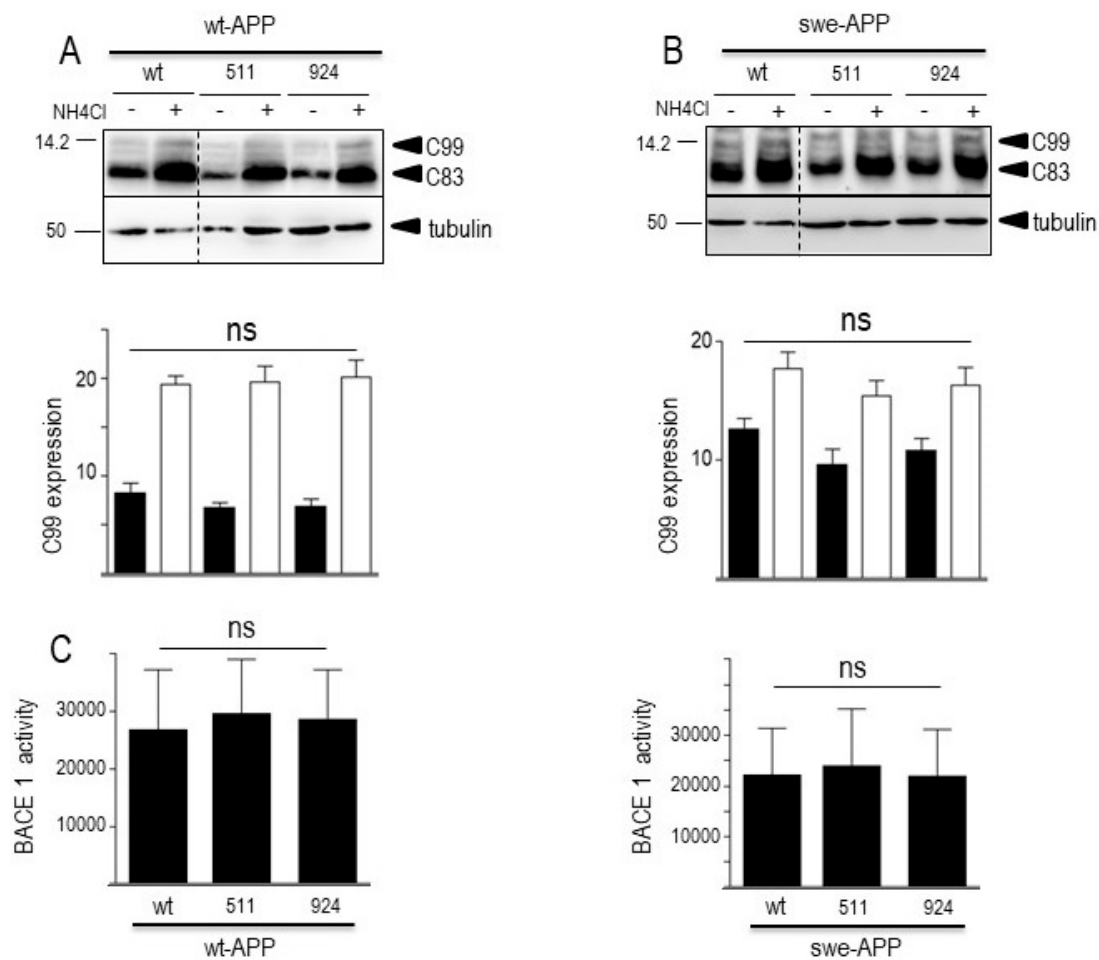


Figure 7. Influence of wild-type and mutated SorLA on CTFs expression and BACE1 activity. cDNA encoding wild-type (SorLA^{wt}), SorLA⁵¹¹ or SorLA⁹²⁴ cDNA were transiently transfected in wt-APP- (A) or swe-APP- (B) expressing HEK293 cells, in absence (–) or in the presence (+) of NH₄Cl. Twenty-four hours after transfection, the expressions of CTFs (C83 and C99) and tubulin were analyzed by Western blotting as described in the experimental procedure. Bars are densitometric analyses of C99 expression and are the means ± SEM of 7 (A) or 6 (B) independent experiments. In (C), BACE1 activity was fluorimetrically measured in cell homogenates as described in the experimental procedures. Bars represent the β -secretase inhibitor I-sensitive (7-methoxycoumarin-4-yl) acetyl-SEVNL-DAEFR K (2,4-dinitrophenyl)-RRNH₂-hydrolyzing activity and are the means ± SEM of 5 independent experiments. ns, non-statistically significant. All full gels are shown in Supplementary Materials.

A previous report also indicated that CTFs expression could be enhanced by alkalinization [46], likely through a protection against proteolysis by acidic hydrolases [19,47]. This was clearly confirmed in Figure 7A,B where NH₄Cl drastically enhanced both C99 and C83 expressions. This was apparently not due to a blockade of γ -secretase cleavage since NH₄Cl did not affect γ -secretase components expressions in both cell lines, whatever the nature of SorLA examined (Figure 6A,B).

Both A β (Figure 5) and C99 (Figure 7) productions that require BACE1-mediated APP cleavage are insensitive to SorLA mutations. This consistent set of data was further strengthened by direct monitoring of BACE1 activity by fluorimetric enzymatic assay [21]. Thus, we did not detect any modulation of BACE1 by wt- or mutated SorLA in both wt-APP- and swe-APP-expressing cells (Figure 7C).

3.4. Influence of Wild-Type SorLA and Its Mutants on Neprilysin and Cathepsin B activities

In sporadic AD, A β and CTF accumulation are not due to increased production but rather to age-related defects in their catabolic processes. Several enzymes are implicated in A β degradation, but neprilysin appears consistently proposed as the main degrading enzyme [31,48,49]. Concerning C99 and C83, we and others have documented their destruction in lysosomal compartment by acidic hydrolases, including cathepsin B [19,47]. In this context, in order to complete our global view of both maturation and degradation processes, we assessed the putative influence of wt- and mutated SorLA on neprilysin and cathepsin B activities. Figure 8 illustrates the lack of influence of SorLA mutations on neprilysin (Figure 8A) and cathepsin B (Figure 8B), activities in both wt-APP- and swe-APP-expressing cells.

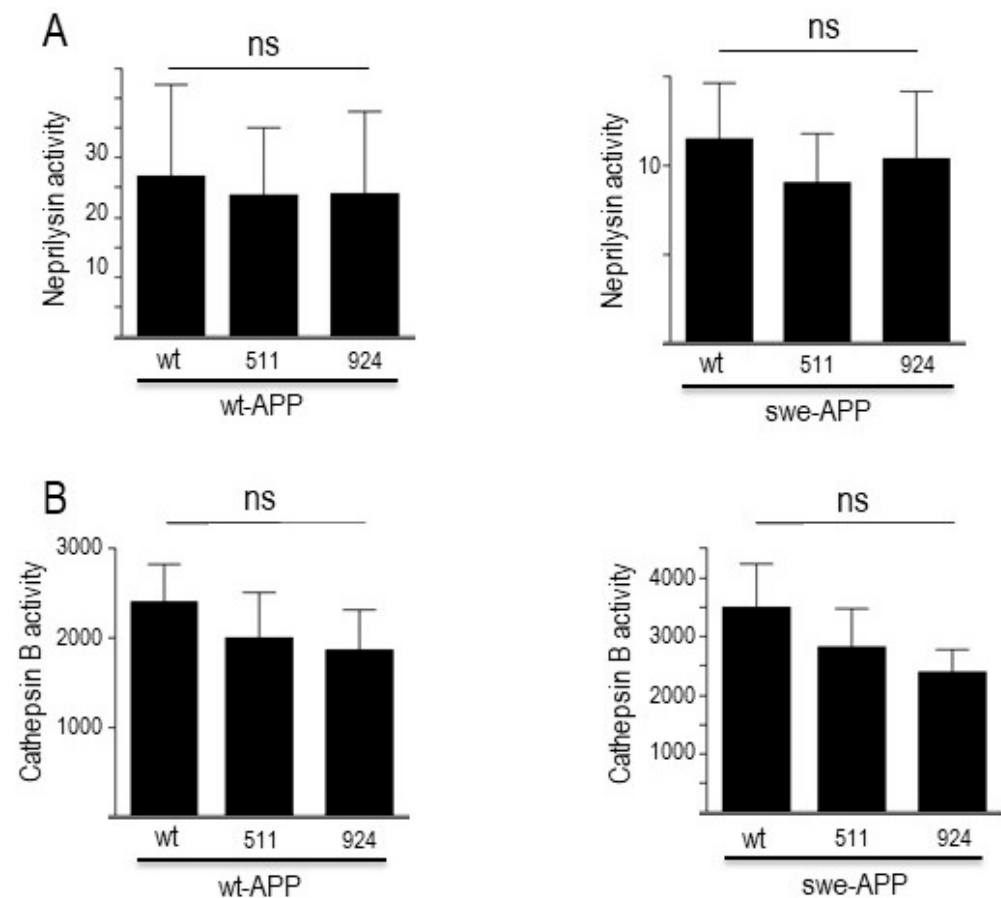


Figure 8. Influence of wild-type and mutated SorLA on neprilysin and cathepsin B activities. cDNA encoding wild-type (SorLA^{wt}), SorLA⁵¹¹ or SorLA⁹²⁴ cDNA were transiently transfected in wt-APP- or swe-APP-expressing HEK293 cells. Twenty-four hours after transfection, neprilysin (A) and cathepsin B (B) activities were fluorimetrically measured with either Suc-Ala-Ala-Phe-7AMC (in the absence or presence of the NEP inhibitor phosphoramidon) or with carboxybenzoyl-Arg-Arg-7-Amido-4-methylcoumarin (without or with leupeptin) for neprilysin and cathepsin B, respectively. Bars correspond to the inhibitor-sensitive hydrolyzing activities and are the means \pm SEM of 5 independent experiments. ns, non-statistically significant.

4. Discussion

Alzheimer's disease is a neurodegenerative pathology with complex etiology. A subset of cases with early onset and rapid progression are due to rare autosomal dominant mutations on APP and presenilins 1 and 2, while most of cases occur lately and are of sporadic origin. However, sporadic cases can be also influenced by a genetic component

since some appear linked to risk factors associated with mutations on a still growing number of genes.

The *SORL1* gene is the only gene to date that has been proposed to contribute to both EOAD and LOAD [8]. This gene encodes a protein SorLA, which binds to APP and promotes its retrieval in the Golgi complex and its retrograde transport from endosomes to the Golgi [16]. Further, SorLA is involved in the targeting of A β peptides to the lysosomal compartment [15]. Overall, this suggested that *SORL1*-associated mutations could well contribute to AD pathology by modulating APP routing and proteolytic processing. However, close examination of data precluded to draw firm conclusions concerning the mechanisms that are defective in mutated SorLA-expressing cells or animal models. Particularly, there exist discrepancies between cellular and in vivo modulation of APP expression triggered by SorLA [15]. Further, functional consequences on APP processing and more precisely on A β 40 and A β 42 recoveries appeared highly variable according to the nature of the *SORL1* mutation and A β species examined [16]. This led us to examine, in depth, the putative influence of *SORL1* mutations on the physiopathological maturation of APP as well as on the fate of various APP catabolites.

Because SorLA is involved in APP trafficking [50] and because APP routing is affected by the Swedish mutations, we first carried our study on cells expressing either wt- or swe-APP. In order to bring insights on expressions and fate of SorLA mutants, we assessed the influence of the proteasome inhibitor lactacystin [51]. This pharmacological treatment was previously shown to affect APP or secretases-related proteins [29]. We observed a potentiation of SorLA⁵¹¹ and SorLA⁹²⁴ upon proteasome inhibition in both wt- and swe-APP-expressing cells.

SorLA⁵¹¹ and SorLA⁹²⁴ expressions did not affect APP expression in both transiently or stably transfected cell models when compared to wt-SorLA. Our data envisioned the whole amount of APP because we considered that overall, this would reflect both intracellular and membrane-associated counterparts and thus, consists of a final readout of expression, traffic and clearance of APP. Our data agree with a previous study showing that *SORL1* mutants did not affect total APP expression in HEK293 cells [16]. However, it was of importance to confirm the cellular localization of wt-APP and SorLA. Our immunohistochemical analysis established first that wt-APP and wt-SorLA indeed co-localized in stably transfected CHO cells and, second, that the SorLA mutations moderately but significantly alter this co-localization.

Although wt-SorLA reduced the levels of secreted sAPP α in both transfectant models, we did not observe SorLA variants-associated modulation of sAPP α . Previous data concerning secreted α - and β -secretases-derived APP fragments led to contrasted observations. Thus, Vardarajan and coll. reported on an enhancement of sAPP β by common and rare SorLA variants with no change linked to wt-SorLA [16]. Caglayan et al. showed that in vivo expression of wt-SorLA did not nor alter sAPP α levels [15]. Conversely, Cuccaro et al. showed a drastic reduction of sAPP α triggered by wt-SorLA and an increase observed after expression of two SorLA mutants linked to EOAD [13]. This could not be accounted for by distinct cell models as both studies were carried out on HEK293 cells expressing swe-APP. This emphasizes the fact that the influence on α -secretase-mediated processing of APP could be differently affected by the nature of the SorLA mutations. In our study, to strengthen our observations, we directly measured α -secretase activity on plated cells. We confirm that α -secretase activity and C83 (the sAPP α C-terminal APP counterpart also referred to as α -CTF) levels were not modulated by SorLA⁵¹¹ and SorLA⁹²⁴ expressions.

Previous studies on the influence of SorLA mutants on A β levels also led to contrasted conclusions. For instance, Cuccaro and colleagues reported on very faint increases of secreted A β 42 triggered by two SorLA mutants to levels that remained lower or close to that recovered in mock-transfected cells [13]. Some of these mutants (SorLA T588I) even did not modify secreted levels of A β 40. Whatever the mutant studied, sAPP β levels remain similar to those recovered in mock-transfected swe-APP-expressing cells [13]. In another study, the level of secreted A β 40 was affected by rare, but not by common, SorLA variants, while secreted A β 42 was modulated by both variants [16]. These discrepant

data could be explained by the nature of the mutation examined, but also by the fact that A β secreted represents only a subset of total A β and that it is also important to assess the levels of intracellular A β . Overall, our study indicates that wt-SorLA as well as SorLA⁵¹¹ and SorLA⁹²⁴ similarly reduced both intracellular and secreted A β 40 and A β 42 in both transiently and stably transfected cells. This conclusion was corroborated by three independent lines of results: (1) β -secretase activity was not modulated by SorLA variants; (2) γ -secretase activity and expressions of its four protein components were not changed upon SorLA variant expressions; (3) the expression of C99, which is the precursor of A β , was not affected by SorLA mutations. It should be noted here that some of these data are supported by previous observations obtained with other variants. Thus, Vardarajan and colleagues did not observe any modulation of PS1 (the catalytic core of γ -secretase) levels upon expressions of variants linked to both EOAD and LOAD [16].

Finally, we analyzed the putative influence of SorLA mutants on the events taking place downstream to APP catabolites production. A β is mainly processed by neprilysin, while CTFs (C99 and C83) undergo proteolysis by acidic lysosomal proteases, including cathepsin B. As would be predictable from our above-described data, SorLA mutants did not modify these neprilysin and cathepsin B activities. Thus, neither production nor clearing mechanisms are affected by the SorLA mutations examined in our work.

5. Conclusions

Our study does not rule out the possibility that additional mutations could well influence APP physiopathological processing. However, we can conclude that our studied mutations reported to be linked to benign or severe AD cases do not trigger their putative pathogenic phenotype through modulation of APP physiopathological maturation. Again, this does not rule out the possibility that these mutations trigger pathogenic phenotypes by influencing other cellular pathways. Particularly, further study remains to be performed to assess the possible influence of these variants on Tau-related pathology or on hippocampal atrophy as has been described for a subset of *SORL1* mutants [52].

Supplementary Materials: The following supporting information can be downloaded at: <https://www.mdpi.com/article/10.3390/cells12242802/s1>, Figure S1: Expression and fate of wt-SorLA and its mutants in stably transfected CHO cells; Figure S2: Immunohistochemical analysis of the co-localization of wt-APP and wt-SorLA of SorLA mutants in CHO stably transfected cells; Figure S3: APP, sAPP α and C-terminal fragments C83 and C99 expressions in stably transfected CHO cells expressing wt-APP and wt-SorLA of SorLA mutants; Figure S4: Secreted A β peptides produced by stably transfected CHO cells expressing wt-APP and wt-SorLA of SorLA mutants.

Author Contributions: C.B. performed and analyzed the experiments, E.D. designed and characterized *SORL1* mutants, P.S.-G.-H. provided wild-type *SORL1* cDNA and corrected the manuscript, F.C. designed the study, analyzed data and wrote the manuscript. All authors have read and agreed to the published version of the manuscript.

Funding: This work has been developed and supported through the LABEX (excellence laboratory, program investment for the future) DISTALZ (Development of Innovative Strategies for a Transdisciplinary approach to Alzheimer's disease).

Institutional Review Board Statement: Not applicable.

Informed Consent Statement: Not applicable.

Data Availability Statement: Data are contained within the article and supplementary materials.

Acknowledgments: We wish to acknowledge Dr. J.F.Hernandez (UMR5247 CNRS, Montpellier, France) for providing us with JM2770. We would like to warmly thank the anonymous donor who contributed significantly with several gifts to our study.

Conflicts of Interest: The authors declare no conflict of interest.

References

1. Bertram, L.; Tanzi, R.E. The genetics of Alzheimer's disease. *Prog. Mol. Biol. Transl. Sci.* **2012**, *107*, 79–100. [[CrossRef](#)] [[PubMed](#)]
2. St George-Hyslop, P.H.; Petit, A. Molecular biology and genetics of Alzheimer's disease. *C. R. Biol.* **2005**, *328*, 119–130. [[CrossRef](#)]
3. Cacace, R.; Sleegers, K.; Van Broeckhoven, C. Molecular genetics of early-onset Alzheimer's disease revisited. *Alzheimer's Dement. J. Alzheimer's Assoc.* **2016**, *12*, 733–748. [[CrossRef](#)] [[PubMed](#)]
4. Pihlstrom, L.; Wiethoff, S.; Houlden, H. Genetics of neurodegenerative diseases: An overview. *Handb. Clin. Neurol.* **2017**, *145*, 309–323. [[CrossRef](#)] [[PubMed](#)]
5. Giri, M.; Zhang, M.; Lu, Y. Genes associated with Alzheimer's disease: An overview and current status. *Clin. Interv. Aging* **2016**, *11*, 665–681. [[CrossRef](#)]
6. Lambert, J.C.; Amouyel, P. Genetics of Alzheimer's disease: New evidences for an old hypothesis? *Curr. Opin. Genet. Dev.* **2011**, *21*, 295–301. [[CrossRef](#)] [[PubMed](#)]
7. Lambert, J.C.; Ibrahim-Verbaas, C.A.; Harold, D.; Naj, A.C.; Sims, R.; Bellenguez, C.; DeStafano, A.L.; Bis, J.C.; Beecham, G.W.; Grenier-Boley, B.; et al. Meta-analysis of 74,046 individuals identifies 11 new susceptibility loci for Alzheimer's disease. *Nat. Genet.* **2013**, *45*, 1452–1458. [[CrossRef](#)] [[PubMed](#)]
8. Rogaeva, E.; Meng, Y.; Lee, J.H.; Gu, Y.; Kawarai, T.; Zou, F.; Katayama, T.; Baldwin, C.T.; Cheng, R.; Hasegawa, H.; et al. The neuronal sortilin-related receptor SORL1 is genetically associated with Alzheimer disease. *Nat. Genet.* **2007**, *39*, 168–177. [[CrossRef](#)]
9. Jin, C.; Liu, X.; Zhang, F.; Wu, Y.; Yuan, J.; Zhu, J.; Zhang, F.; Wang, G.; Cheng, Z. An updated meta-analysis of the association between SORL1 variants and the risk for sporadic Alzheimer's disease. *J. Alzheimer's Dis.* **2013**, *37*, 429–437. [[CrossRef](#)]
10. Reitz, C.; Cheng, R.; Rogaeva, E.; Lee, J.H.; Tokuhira, S.; Zou, F.; Bettens, K.; Sleegers, K.; Tan, E.K.; Kimura, R.; et al. Meta-analysis of the association between variants in SORL1 and Alzheimer disease. *Arch. Neurol.* **2011**, *68*, 99–106. [[CrossRef](#)]
11. Wang, Z.; Lei, H.; Zheng, M.; Li, Y.; Cui, Y.; Hao, F. Meta-analysis of the Association between Alzheimer Disease and Variants in GAB2, PICALM, and SORL1. *Mol. Neurobiol.* **2016**, *53*, 6501–6510. [[CrossRef](#)]
12. Pottier, C.; Hannequin, D.; Coutant, S.; Rovelet-Lecrux, A.; Wallon, D.; Rousseau, S.; Legallic, S.; Paquet, C.; Bombois, S.; Pariente, J.; et al. High frequency of potentially pathogenic SORL1 mutations in autosomal dominant early-onset Alzheimer disease. *Mol. Psychiatry* **2012**, *17*, 875–879. [[CrossRef](#)] [[PubMed](#)]
13. Cuccaro, M.L.; Carney, R.M.; Zhang, Y.; Bohm, C.; Kunkle, B.W.; Vardarajan, B.N.; Whitehead, P.L.; Cukier, H.N.; Mayeux, R.; St George-Hyslop, P.; et al. SORL1 mutations in early- and late-onset Alzheimer disease. *Neurol. Genet.* **2016**, *2*, e116. [[CrossRef](#)] [[PubMed](#)]
14. Selkoe, D.J. Normal and abnormal biology of the β -amyloid precursor protein. *Annu. Rev. Neurosci.* **1994**, *17*, 489–517. [[CrossRef](#)] [[PubMed](#)]
15. Caglayan, S.; Takagi-Niidome, S.; Liao, F.; Carlo, A.S.; Schmidt, V.; Burgert, T.; Kitago, Y.; Fuchtbauer, E.M.; Fuchtbauer, A.; Holtzman, D.M.; et al. Lysosomal Sorting of Amyloid- β by the SORLA Receptor Is Impaired by a Familial Alzheimer's Disease Mutation. *Sci. Transl. Med.* **2014**, *6*, 223ra220. [[CrossRef](#)] [[PubMed](#)]
16. Vardarajan, B.N.; Zhang, Y.; Lee, J.H.; Cheng, R.; Bohm, C.; Ghani, M.; Reitz, C.; Reyes-Dumeyer, D.; Shen, Y.; Rogaeva, E.; et al. Coding mutations in SORL1 and Alzheimer disease. *Ann. Neurol.* **2015**, *77*, 215–227. [[CrossRef](#)] [[PubMed](#)]
17. Guillot-Sestier, M.V.; Sunyach, C.; Ferreira, S.T.; Marzolo, M.P.; Bauer, C.; Thevenet, A.; Checler, F. α -Secretase-derived fragment of cellular prion, N1, protects against monomeric and oligomeric amyloid β ($A\beta$)-associated cell death. *J. Biol. Chem.* **2012**, *287*, 5021–5032. [[CrossRef](#)]
18. Chami, L.; Buggia-Prevot, V.; Duplan, E.; Delprete, D.; Chami, M.; Peyron, J.F.; Checler, F. Nuclear factor- κ B regulates β APP and β - and γ -secretases differently at physiological and supraphysiological $A\beta$ concentrations. *J. Biol. Chem.* **2012**, *287*, 24573–24584. [[CrossRef](#)]
19. Lauritzen, I.; Pardossi-Piquard, R.; Bauer, C.; Brigham, E.; Abraham, J.D.; Ranaldi, S.; Fraser, P.; St-George-Hyslop, P.; Le Thuc, O.; Espin, V.; et al. The β -secretase-derived C-terminal fragment of β APP, C99, but not $A\beta$, is a key contributor to early intraneuronal lesions in triple-transgenic mouse hippocampus. *J. Neurosci.* **2012**, *32*, 16243–16255. [[CrossRef](#)]
20. Sevalle, J.; Amoyel, A.; Robert, P.; Fournie-Zaluski, M.C.; Roques, B.; Checler, F. Aminopeptidase A contributes to the N-terminal truncation of amyloid β -peptide. *J. Neurochem.* **2009**, *109*, 248–256. [[CrossRef](#)]
21. Andrau, D.; Dumanchin-Njock, C.; Ayral, E.; Vizzavona, J.; Farzan, M.; Boisbrun, M.; Fulcrand, P.; Hernandez, J.F.; Martinez, J.; Lefranc-Jullien, S.; et al. BACE1- and BACE2-expressing human cells: Characterization of β -amyloid precursor protein-derived catabolites, design of a novel fluorimetric assay, and identification of new in vitro inhibitors. *J. Biol. Chem.* **2003**, *278*, 25859–25866. [[CrossRef](#)] [[PubMed](#)]
22. Cisse, M.A.; Gandreuil, C.; Hernandez, J.F.; Martinez, J.; Checler, F.; Vincent, B. Design and characterization of a novel cellular prion-derived quenched fluorimetric substrate of α -secretase. *Biochem. Biophys. Res. Commun.* **2006**, *347*, 254–260. [[CrossRef](#)] [[PubMed](#)]
23. Bradford, M.M. A rapid and sensitive method for the quantitation of microgram quantities of protein utilizing the principle of protein-dye binding. *Anal. Biochem.* **1976**, *72*, 248–259. [[CrossRef](#)] [[PubMed](#)]
24. Pardossi-Piquard, R.; Petit, A.; Kawarai, T.; Sunyach, C.; Alves da Costa, C.; Vincent, B.; Ring, S.; D'Adamio, L.; Shen, J.; Muller, U.; et al. Presenilin-dependent transcriptional control of the $A\beta$ -degrading enzyme neprilysin by intracellular domains of β APP and APLP. *Neuron* **2005**, *46*, 541–554. [[CrossRef](#)] [[PubMed](#)]

25. Andersen, O.M.; Reiche, J.; Schmidt, V.; Gotthardt, M.; Spoelgen, R.; Behlke, J.; von Arnim, C.A.; Breiderhoff, T.; Jansen, P.; Wu, X.; et al. Neuronal sorting protein-related receptor sorLA/LR11 regulates processing of the amyloid precursor protein. *Proc. Natl. Acad. Sci. USA* **2005**, *102*, 13461–13466. [[CrossRef](#)] [[PubMed](#)]
26. Haass, C.; Lemere, C.A.; Capell, A.; Citron, M.; Seubert, P.; Schenk, D.; Lannfelt, L.; Selkoe, D. The Swedish mutation causes early-onset Alzheimer's disease by β -secretase cleavage within the secretory pathway. *Nat. Med.* **1995**, *1*, 1291–1296. [[CrossRef](#)] [[PubMed](#)]
27. Fenteany, G.; Schreiber, S.L. Lactacystin, proteasome function, and cell fate. *J. Biol. Chem.* **1998**, *273*, 8545–8548. [[CrossRef](#)]
28. Marambaud, P.; Ancolio, K.; Lopez-Perez, E.; Checler, F. Proteasome inhibitors prevent the degradation of familial Alzheimer's disease-linked presenilin 1 and potentiate A β 42 recovery from human cells. *Mol. Med.* **1998**, *4*, 147–157. [[CrossRef](#)]
29. Dunys, J.; Kawarai, T.; Giaime, E.; Wilk, S.; Herrant, M.; Auburger, P.; St George-Hyslop, P.; Alves da Costa, C.; Checler, F. Study on the putative contribution of caspases and the proteasome to the degradation of Aph-1a and Pen-2. *Neurodegener. Dis.* **2007**, *4*, 156–163. [[CrossRef](#)]
30. Carson, J.A.; Turner, A.J. β -Amyloid catabolism: Roles for neprilysin (NEP) and other metallopeptidases? *J. Neurochem.* **2002**, *81*, 1–8. [[CrossRef](#)]
31. Miners, J.S.; Baig, S.; Palmer, J.; Palmer, L.E.; Kehoe, P.G.; Love, S. SYMPOSIUM: Clearance of A β from the Brain in Alzheimer's Disease: A β -degrading enzymes in Alzheimer's disease. *Brain Pathol.* **2008**, *18*, 240–252. [[CrossRef](#)] [[PubMed](#)]
32. Shirotani, K.; Tsubuki, S.; Iwata, N.; Takaki, Y.; Harigaya, W.; Maruyama, K.; Kiryu-Seo, S.; Kiyama, H.; Iwata, H.; Tomita, T.; et al. Neprilysin degrades both amyloid β peptides 1–40 and 1–42 most rapidly and efficiently among thiorphan- and phosphoramidon-sensitive endopeptidases. *J. Biol. Chem.* **2001**, *276*, 21895–21901. [[CrossRef](#)] [[PubMed](#)]
33. Kuperstein, I.; Broersen, K.; Benilova, I.; Rozenski, J.; Jonckheere, W.; Debulpaep, M.; Vandersteen, A.; Segers-Nolten, I.; Van Der Werf, K.; Subramaniam, V.; et al. Neurotoxicity of Alzheimer's disease A β peptides is induced by small changes in the A β 42 to A β 40 ratio. *EMBO J.* **2010**, *29*, 3408–3420. [[CrossRef](#)]
34. Chui, D.H.; Dobo, E.; Makifuchi, T.; Akiyama, H.; Kawakatsu, S.; Petit, A.; Checler, F.; Araki, W.; Takahashi, K.; Tabira, T. Apoptotic neurons in Alzheimer's disease frequently show intracellular A β 42 labeling. *J. Alzheimers Dis.* **2001**, *3*, 231–239. [[CrossRef](#)]
35. Takasugi, N.; Tomita, T.; Hayashi, I.; Tsuruoka, M.; Niimura, M.; Takahashi, Y.; Thinakaran, G.; Iwatsubo, T. The role of presenilin cofactors in the γ -secretase complex. *Nature* **2003**, *422*, 438–441. [[CrossRef](#)] [[PubMed](#)]
36. Haass, C. Take five—BACE and the γ -secretase quartet conduct Alzheimer's amyloid β -peptide generation. *EMBO J.* **2004**, *23*, 483–488. [[CrossRef](#)]
37. De Strooper, B. Aph-1, Pen-2, and nicastrin with presenilin generate an active γ -secretase complex. *Neuron* **2003**, *38*, 9–12. [[CrossRef](#)]
38. De Strooper, B.; Saftig, P.; Craessaerts, K.; Vanderstichele, H.; Guhde, G.; Annaert, W.; Von Figura, K.; Van Leuven, F. Deficiency of presenilin-1 inhibits the normal cleavage of amyloid precursor protein. *Nature* **1998**, *391*, 387–390. [[CrossRef](#)]
39. Wolfe, M.S.; Xia, W.; Ostaszewski, B.L.; Diehl, T.S.; Kimberly, W.T.; Selkoe, D.J. Two transmembrane aspartates in presenilin-1 required for presenilin endoproteolysis and γ -secretase activity. *Nature* **1999**, *398*, 513–517. [[CrossRef](#)]
40. Cole, S.L.; Vassar, R. The Alzheimer's disease β -secretase enzyme, BACE1. *Mol. Neurodegener.* **2007**, *2*, 22. [[CrossRef](#)]
41. Flammang, B.; Pardossi-Piquard, R.; Sevalle, J.; Debayle, D.; Dabert-Gay, A.S.; Thevenet, A.; Lauritzen, I.; Checler, F. Evidence that the amyloid- β protein precursor intracellular domain, AICD, derives from β -secretase-generated C-terminal fragment. *J. Alzheimer's Dis.* **2012**, *30*, 145–153. [[CrossRef](#)]
42. Goodger, Z.V.; Rajendran, L.; Trutzel, A.; Kohli, B.M.; Nitsch, R.M.; Konietzko, U. Nuclear signaling by the APP intracellular domain occurs predominantly through the amyloidogenic processing pathway. *J. Cell Sci.* **2009**, *122*, 3703–3714. [[CrossRef](#)]
43. Belyaev, N.D.; Kellett, K.A.; Beckett, C.; Makova, N.Z.; Revett, T.J.; Nalivaeva, N.N.; Hooper, N.M.; Turner, A.J. The Transcriptionally Active Amyloid Precursor Protein (APP) Intracellular Domain Is Preferentially Produced from the 695 Isoform of APP in a β -Secretase-dependent Pathway. *J. Biol. Chem.* **2010**, *285*, 41443–41454. [[CrossRef](#)]
44. Citron, M.; Oltersdorf, T.; Haass, C.; McConlogue, L.; Hung, A.Y.; Seubert, P.; Vigo-Pelfrey, C.; Lieberburg, I.; Selkoe, D.J. Mutation of the β -amyloid precursor protein in familial Alzheimer's disease increases β -protein production. *Nature* **1992**, *360*, 672–674. [[CrossRef](#)]
45. Perez, R.G.; Squazzo, S.L.; Koo, E.H. Enhanced release of amyloid β -protein from codon 670/671 "Swedish" mutant β -amyloid precursor protein occurs in both secretory and endocytic pathways. *J. Biol. Chem.* **1996**, *271*, 9100–9107. [[CrossRef](#)] [[PubMed](#)]
46. Vingtdoux, V.; Hamdane, M.; Loyens, A.; Gele, P.; Drobeck, H.; Begard, S.; Galas, M.C.; Delacourte, A.; Beauvillain, J.C.; Buee, L.; et al. Alkalinizing drugs induce accumulation of amyloid precursor protein by-products in luminal vesicles of multivesicular bodies. *J. Biol. Chem.* **2007**, *282*, 18197–18205. [[CrossRef](#)]
47. Lauritzen, I.; Pardossi-Piquard, R.; Bourgeois, A.; Pagnotta, S.; Biferi, M.G.; Barkats, M.; Lacor, P.; Klein, W.; Bauer, C.; Checler, F. Intraneuronal aggregation of the β -CTF fragment of APP (C99) induces A β -independent lysosomal-autophagic pathology. *Acta Neuropathol.* **2016**, *132*, 257–276. [[CrossRef](#)] [[PubMed](#)]
48. Nalivaeva, N.N.; Fisk, L.R.; Belyaev, N.D.; Turner, A.J. Amyloid-degrading enzymes as therapeutic targets in Alzheimer's disease. *Curr. Alzheimer Res.* **2008**, *5*, 212–224. [[CrossRef](#)] [[PubMed](#)]
49. Hersh, L.B.; Rodgers, D.W. Neprilysin and amyloid beta peptide degradation. *Curr. Alzheimer Res.* **2008**, *5*, 225–231. [[CrossRef](#)]

50. Jacobsen, L.; Madsen, P.; Jacobsen, C.; Nielsen, M.S.; Gliemann, J.; Petersen, C.M. Activation and functional characterization of the mosaic receptor SorLA/LR11. *J. Biol. Chem.* **2001**, *276*, 22788–22796. [[CrossRef](#)]
51. Fenteany, G.; Standaert, R.; Lane, W.S.; Choi, S.; Corey, E.J.; Schreiber, S.L. Inhibition of proteasome activities and subunit-specific amino-terminal threonine modification by lactacystin. *Science* **1995**, *268*, 726–731. [[CrossRef](#)] [[PubMed](#)]
52. Louwersheimer, E.; Ramirez, A.; Cruchaga, C.; Becker, T.; Kornhuber, J.; Peters, O.; Heilmann, S.; Wiltfang, J.; Jessen, F.; Visser, P.J.; et al. The influence of genetic variants in *SORL1* gene on the manifestation of Alzheimer’s disease. *Neurobiol. Aging* **2015**, *36*, 1605.e13–1605.e20. [[CrossRef](#)] [[PubMed](#)]

Disclaimer/Publisher’s Note: The statements, opinions and data contained in all publications are solely those of the individual author(s) and contributor(s) and not of MDPI and/or the editor(s). MDPI and/or the editor(s) disclaim responsibility for any injury to people or property resulting from any ideas, methods, instructions or products referred to in the content.