

Identification of the Gene Encoding the Alternative Sigma Factor σ^B from *Listeria monocytogenes* and Its Role in Osmotolerance†

LYNNE A. BECKER, MEHMET SEVKET ÇETIN, ROBERT W. HUTKINS, AND ANDREW K. BENSON*

Department of Food Science and Technology, University of Nebraska, Lincoln, Nebraska 68583-0919

Received 4 May 1998/Accepted 6 July 1998

Listeria monocytogenes is well known for its robust physiology, which permits growth at low temperatures under conditions of high osmolarity and low pH. Although studies have provided insight into the mechanisms used by *L. monocytogenes* to allay the physiological consequences of these adverse environments, little is known about how these responses are coordinated. In the studies presented here, we have cloned the *sigB* gene and several *rsb* genes from *L. monocytogenes*, encoding homologs of the alternative sigma factor σ^B and the RsbUVWX proteins, which govern transcription of a general stress regulon in the related bacterium *Bacillus subtilis*. The *L. monocytogenes* and *B. subtilis* *sigB* and *rsb* genes are similar in sequence and physical organization; however, we observed that the activity of σ^B in *L. monocytogenes* was uniquely responsive to osmotic upshifting, temperature downshifting, and the presence of EDTA in the growth medium. The magnitude of the response was greatest after an osmotic upshift, suggesting a role for σ^B in coordinating osmotic responses in *L. monocytogenes*. A null mutation in the *sigB* gene led to substantial defects in the ability of *L. monocytogenes* to use betaine and carnitine as osmoprotectants. Subsequent measurements of betaine transport confirmed that the absence of σ^B reduced the ability of the cells to accumulate betaine. Thus, σ^B coordinates responses to a variety of physical and chemical signals, and its function facilitates the growth of *L. monocytogenes* under conditions of high osmotic strength.

Listeria monocytogenes is a ubiquitous gram-positive bacterium that occasionally causes outbreaks and sporadic cases of food-borne illness. It is estimated that more than 1,700 cases occur annually in the United States, with outcomes ranging from flu-like illness to meningitis, meningoencephalitis, septicemia, abortion, and death, particularly in pregnant women and immunocompromised individuals (24, 41).

As an intracellular parasite that is transmitted primarily by contaminated food, *L. monocytogenes* must reach and/or maintain a cell density in the food environment that is necessary for infection. This population must further mitigate the physiological consequences of passage through the gastrointestinal tract and entry into host cell phagosomes. Although genetic analysis of virulence has provided many of the details of how virulence genes allow *L. monocytogenes* to elude potentially lethal outcomes of entry into host cells (23, 40, 43), little is known about the role of adaptive physiological responses in promoting the growth and survival of this bacterium in the food, intestinal, and intracellular environments.

L. monocytogenes is well known for its robust physiological characteristics and is one of the few pathogenic bacteria capable of growth at refrigeration temperatures, at low pHs, and/or under conditions of high osmolarity (21, 22, 32, 36, 55). These characteristics play an integral role in its potential as a food-borne pathogen, since they permit the growth of *L. monocytogenes* under conditions that prohibit the growth of many commensal organisms. Physiological studies have previously demonstrated that specific transport systems which mediate

the uptake of osmoprotectants and cryoprotectants facilitate growth under these environmental conditions (9, 31, 32). A further role for adaptive physiological responses in pathogenesis has also been proposed on the basis of genetic experiments demonstrating that genes participating in acid tolerance (35) and stress-induced proteolysis (42) are necessary for full virulence in the mouse model. Thus, significant evidence is beginning to mount for a central role of adaptive physiological responses of *L. monocytogenes* in pathogenesis as well as in growth and survival in the environment.

To further our understanding of the connection between physiology and the transmission of food-borne illness, we have begun an analysis of genetic pathways that modulate adaptive responses in *L. monocytogenes*. One candidate for mediating such responses in gram-positive organisms is σ^B , a secondary subunit of RNA polymerase that is known to govern a large stress response regulon in the related bacterium *Bacillus subtilis*. The σ^B regulon of *B. subtilis* comprises at least 40 genes (52) and includes the *katE* gene, encoding a catalase (19, 20), the *opuE* gene, encoding transport machinery for osmoprotectants (53), the *clpC* gene, which is similar to stress-induced ATPase subunits of ClpP-type proteases (33), the *gtaB* gene, encoding a UDP-glucose pyrophosphorylase believed to participate in trehalose biosynthesis (46), and several genes whose functions cannot be inferred from their sequences (3, 11, 47).

The activity of σ^B is joined to several physical and chemical signals through a postranslational mechanism that partitions σ^B between inactive complexes with an anti-sigma factor protein, RsbW (for regulator of sigma B), and free σ^B , which is capable of forming holoenzyme complexes with core RNA polymerase (6). At least two independent pathways exist which can alter the affinity of RsbW for its antagonist, RsbV, or σ^B . First, it has been proposed that ATP stimulates the formation of RsbW- σ^B complexes and activates a serine kinase activity in RsbW that phosphorylates its antagonist, RsbV, into an inac-

* Corresponding author. Mailing address: Department of Food Science and Technology, 358 Food Industry Complex, University of Nebraska, Lincoln, NE 68583-0919. Phone: (402) 472-5637. Fax: (402) 472-1693. E-mail: abenson@foodsci.unl.edu.

† Journal Series paper 12219 of the Nebraska Agricultural Experimental Station.

tive state (2, 18, 58). Physical signals such as temperature, pH, and osmolarity can also invoke σ^B activity (7, 11–13, 51) by stimulating the function of the RsbV-phosphate phosphatase RsbU (29, 58). At least four other Rsb proteins (RsbR, RsbS, RsbT, and RsbX) modulate the activity of RsbU and serve as distinct points of signal input into the system (1, 29).

To examine how the σ^B regulon contributes to adaptive responses of *L. monocytogenes*, we have cloned the genes encoding homologs of σ^B and several of the Rsb proteins. In this report, we demonstrate that the *L. monocytogenes* *rsbVW-sigB-rsbX* transcription unit is structurally analogous to its counterpart in *B. subtilis* and that its activity in *L. monocytogenes* is responsive to several physical and environmental signals. Genetic and physiological studies indicate that σ^B facilitates growth under conditions of high osmolarity when betaine and carnitine are supplied as the primary osmoprotectants. Thus, the σ^B regulon in *L. monocytogenes* participates in responses to several physiological and chemical insults, and it may serve as a primary osmosensor in this organism.

MATERIALS AND METHODS

Strains and plasmids. *L. monocytogenes* Scott A was obtained from R. Hutkins (University of Nebraska), and *L. monocytogenes* LO4035 was obtained from N. Freitag (Wayne State University). *L. monocytogenes* cells were grown in brain heart infusion (BHI) (Difco, Detroit, Mich.) at 30°C unless otherwise specified. Where specified, kanamycin (30 µg/ml) or chloramphenicol (6 µg/ml) was added. *Escherichia coli* DH5 α and *E. coli* MC1061 were used as cloning hosts and were grown in Luria broth with 150 µg of ampicillin/ml or 40 µg of kanamycin/ml where appropriate.

Cloning of *sigB* from *L. monocytogenes*. Preliminary Southern blot experiments using a 540-bp *EcoRI*-*PstI* fragment of the *B. subtilis* *sigB* gene (10) as a probe indicated that a single 3.8-kb *EcoRI* fragment of the *L. monocytogenes* Scott A or LO4035 chromosome hybridized under conditions of moderate stringency (with 5 \times SSC [1 \times SSC is 0.15 M NaCl plus 0.015 M sodium citrate] at 56°C). A plasmid minilibrary was therefore constructed by cloning 3- to 4-kb *EcoRI* fragments of *L. monocytogenes* chromosomal DNA into *EcoRI*-digested pUC19. The resulting plasmid library was transformed into a DH5 α strain, and approximately 200 colonies containing plasmids with inserts were patched onto replica plates and transferred to nylon membranes. The colonies were screened by colony hybridization with the 540-bp *EcoRI*-*PstI* *B. subtilis* *sigB* probe under the same hybridization conditions as those used for the Southern blots. Two positive clones with identical restriction patterns were obtained. One clone was designated pLM413 and was used for further studies.

DNA sequence analysis. Both strands of the 3.75-kb *EcoRI* fragment of pLM413 were subjected to DNA sequence analysis on an automated sequencer (LiCor, Inc.) by primer walking. Sequence alignments were performed with the PILEUP and BESTFIT programs from the Genetics Computer Group.

Preparation and analysis of RNA. RNA samples were prepared from 200 ml of mid-logarithmic-phase *L. monocytogenes* cells (optical density at 600 nm [OD₆₀₀], ~0.4) before and 20 min after the addition of either 4% NaCl, 1 mM EDTA, 2% ethanol, 0.15% H₂O₂, or glacial acetic acid to a pH of 5.3. Additional samples were prepared after an aliquot of the cells was allowed to enter stationary phase (OD₆₀₀, ~3.0) and after mid-logarithmic-phase cells were shifted from 25 to 48°C for 20 min or to 4°C for 24 h. After treatment, the cells were harvested by centrifugation at 8,000 \times g for 5 min at 4°C, and the cell pellets were frozen at -70°C overnight. The cells were subsequently resuspended in 5 ml of buffer D (4 M guanidinium thiocyanate, 25 mM sodium citrate, 0.5% Sarkosyl, 0.1 M 2-mercaptoethanol) and passed through a French pressure cell at 1,500 lb/in². RNA was then extracted as described by Chomczynski and Sacchi (15). The final RNA pellet was dissolved in diethylpyrocarbonate-treated water, quantified spectrophotometrically, and stored frozen at -70°C. The integrity and relative concentrations of the RNA samples were also checked by agarose gel electrophoresis and ethidium bromide staining.

Primer extension analysis of *sigB* transcripts. For each reaction, 10 pmol of the oligonucleotide VPROM2 (5' CGCTGATAAGCATCGATCAC 3') was end labeled with 50 µCi of [γ -³²P]ATP. The labeled primer was then mixed with 50 µg of RNA, heated to 70°C for 10 min, chilled on ice for 30 s, and incubated at 42°C with 3 U of SUPERScript II RNase H-reverse transcriptase (Life Technologies). After 50 min of extension, the products were ethanol precipitated, washed in 70% ethanol, and dried. The primer extension products were then dissolved in 90% formamide-10 mM EDTA and loaded onto a 6% denaturing polyacrylamide gel alongside a sequencing ladder prepared by using the VPROM2 primer and the pLM413 template DNA.

Construction of the *sigB::km* strain. A null mutation in the *L. monocytogenes* *sigB* gene (*sigB::km*) was generated by cloning an *aph3'5'* gene encoding kanamycin resistance from pDG783 (26) into the unique *SlyI* site of pLM413, which

lies within the *sigB* coding region. The *aph3'5'* gene was removed from pDG783 as a *HindIII* fragment and was subsequently blunt ended with Klenow fragment prior to ligation to *SlyI*-restricted pLM413 that had also been blunt ended with Klenow fragment. The resulting plasmid was designated pLM425 and was restriction mapped to confirm insertion of the *aph3'5'* gene into the appropriate position. The entire *EcoRI* fragment of pLM425, containing the *rsbU*, *rsbV*, *rsbW*, *sigB::km*, and *rsbX* genes, was then cloned into the *EcoRI* site of the temperature-sensitive integration vector pKSV7, which carries a chloramphenicol resistance gene (44). The resulting plasmid, designated pKSV7K8, was restriction mapped to ensure its integrity.

To place the *sigB::km* allele onto the *L. monocytogenes* chromosome by allelic exchange, we used pKSV7K8 in an integration-excision procedure outlined by Smith and Youngman (44). The plasmid was introduced into *L. monocytogenes* LO4035 cells by electroporation as described elsewhere (14). After 2 h of recovery in BHI, the transformants were plated onto BHI containing 6 µg of chloramphenicol/ml and were incubated at 30°C for 36 h. Two chloramphenicol-resistant transformants were then chosen and grown for three successive generations at the nonpermissive temperature for plasmid replication (42°C) in BHI supplemented with 6 µg of chloramphenicol/ml, followed by growth for three generations in BHI alone at the permissive temperature for plasmid replication (30°C). The cultures were then plated on BHI with 30 µg of kanamycin/ml and were incubated at 42°C. Kanamycin-resistant colonies were then patched to BHI-chloramphenicol plates to screen for loss of the plasmid-linked chloramphenicol resistance determinant. Kanamycin-resistant, chloramphenicol-sensitive colonies were subsequently analyzed by Southern blot analysis to confirm that plasmid excision had occurred, leaving the *sigB::km* allele on the chromosome.

Because insertion of the kanamycin resistance cassette into *sigB* is likely to be polar on downstream *rsbX* expression, we compared the phenotype of the *sigB::km* strain to that of an *rsbX* mutant in order to determine if the polarity could contribute to the phenotypic characteristics of the *sigB::km* strain. The *rsbX* gene was inactivated by integration of a pKSV7 derivative carrying an internal fragment of the *L. monocytogenes* *rsbX* gene. Transformation of *L. monocytogenes* LO4035 with this plasmid insertional inactivates *rsbX* and subsequently gives rise to pinpoint colonies after 2 days of incubation. Transfer of the colonies to fresh medium consistently gave rise to flares of apparently faster-growing cells that maintained a large-colony phenotype upon subsequent passage. These observations are consistent with the phenotype of *rsbX* mutants of *B. subtilis*, which grow poorly, due to the derepression of σ^B activity, and which acquire suppressor mutations that give rise to cells with normal growth rates (5, 11, 50). The fact that insertion of the kanamycin resistance gene into the *sigB* gene of *L. monocytogenes* gives rise to normal-sized colonies indicates that any polar effects on *rsbX* are epistatic to inactivation of *sigB* and are therefore negligible with regard to the phenotype of the *sigB* mutant.

Growth in DM. To assess the ability of the wild-type and *sigB::km* strains to use betaine and carnitine as osmoprotectants, the cells were grown in a defined medium (DM) derived from formulations described by Pine et al. (39) and Beumer et al. (9). DM contains, per liter, 15 g of KH₂PO₄, 1 g of (NH₄)₂SO₄, 0.2 g of MgSO₄ · 7H₂O, 0.02 g of CaCl₂, 10 g of glucose, 0.088 g of ferric ammonium citrate, 0.1 g each of L-leucine, L-isoleucine, L-valine, L-methionine, and L-cysteine, 0.6 g of L-glutamine, 0.5 mg each of riboflavin and biotin, 1.0 mg of thiamine, and 0.005 mg of thioctic acid. After stock solutions of the components were combined, the pH was adjusted to 6.7 with potassium hydroxide and was filter sterilized. Cultures were grown in DM for 18 h at 30°C and were subsequently inoculated at 2% (vol/vol) in 250-ml baffled culture flasks containing DM with or without 3% NaCl, or DM with 3% NaCl that was supplemented either with 1 mM glycine betaine or with 1 mM carnitine. The cultures were incubated with shaking at 30°C, and growth was monitored by spectrophotometric measurements of OD₆₀₀ over the course of several days.

Betaine uptake. To measure the ability of LO4035 and LMA2B to accumulate betaine, log-phase cells grown in BHI at 30°C were harvested by centrifugation, washed twice, and resuspended in 50 mM potassium phosphate buffer (pH 6.8) to an OD₆₀₀ of ca. 1.0. The cells were energized by the addition of glucose (final concentration, 5 mM), and where indicated, 3% NaCl (514 mM) was also added. After 20 min of incubation at room temperature, the assays were initiated by the addition of [¹⁴C]betaine (final concentration, 1 mM; 65 µCi/mmol; American Radiolabeled Chemicals, Inc., St. Louis, Mo.). The mixtures were incubated at room temperature, and 1-ml samples were removed and centrifuged through silicon oil as described previously (16). Radioactivity was measured by scintillation counting. The results are reported as the averages of duplicate samples. Independent experiments were conducted on successive days to confirm these results. The protein concentrations of cell suspensions were derived from a standard curve relating OD to protein concentration (54).

Nucleotide sequence accession number. The sequence of the 3.75-kb *EcoRI* fragment of pLM413 has been deposited in GenBank under accession no. AF074855.

RESULTS

Cloning and sequence analysis of the *sigB* operon from *L. monocytogenes*. DNA sequence analysis of the cloned fragment

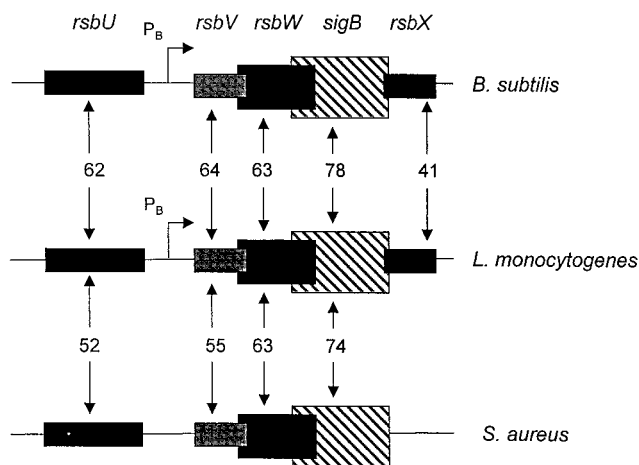


FIG. 1. Similarity of the structure and organization of RsbU, RsbV, RsbW, σ^B , and RsbX proteins with their *B. subtilis* and *S. aureus* homologs. The percent similarity scores of pairwise alignments of the primary amino acid sequences of the *L. monocytogenes* proteins with the *B. subtilis* and *S. aureus* proteins are shown between the blocks representing the respective genes. Coding regions that overlap are indicated by overlapping of the respective blocks representing each gene. The σ^B -dependent promoters (P_B) identified upstream of *rsbV* in *B. subtilis* (28) and in *L. monocytogenes* (this report) are indicated by arrows.

revealed that five putative coding regions were present, including one with homology to the 3' end of *rsbU*, as well as the entire coding regions of the *rsbV*, *rsbW*, *sigB*, and *rsbX* homologs (Fig. 1). The contiguous arrangement of these genes is similar to that observed in *B. subtilis* and *Staphylococcus aureus* (28, 34, 56, 57).

Detailed comparisons of the physical organization of the genes from *L. monocytogenes* to that of the genes in *B. subtilis* and *S. aureus* showed two highly conserved features. First, a significant spacer region of 153 bases is positioned between the 3' end of *rsbU* and the 5' end of *rsbV* in *L. monocytogenes*; although not conserved in sequence, this spacer region also exists in *B. subtilis* (59 bp) and *S. aureus* (110 bp) (28, 57). This region contains a known σ^B -dependent promoter in *B. subtilis* that serves as an autocatalytic device for amplifying mRNA encoding σ^B and the RsbVWX regulatory components in response to stress (7, 13, 28). Secondly, there appears to be translational coupling between *rsbV* and *rsbW* and between *rsbW* and *sigB*, as these coding regions overlap by at least 1 codon. The overlap is most striking between *rsbW* and *sigB* (13 codons) and appears to be an important feature of these genes, because it is conserved in *B. subtilis* (13 codons) and *S. aureus* (8 codons) (28, 34, 57). Translational coupling has been proposed for these genes (28), and experimental evidence supports this hypothesis in the case of *rsbW* and *sigB* (8). The conservation of the *rsbW-sigB* overlap further supports the importance of coupling as a device for ensuring equimolar synthesis of σ^B and its primary regulator; however, the mechanism through which the coupling is mediated through this extensive overlap remains to be determined.

Homology of the Rsb and σ^B proteins. Alignment of the predicted amino acid sequences of RsbUVWX and σ^B with their homologs from *B. subtilis* and *S. aureus* indicates that the *L. monocytogenes* homologs are more closely related to their counterparts in *B. subtilis* (Fig. 1 and 2). Overall, the putative RsbU, RsbV, RsbW, and σ^B proteins display 60 to 75% similarity (40 to 50% identity) with their *B. subtilis* and *S. aureus* homologs. In contrast, however, the RsbX protein displays only limited homology (29% identity) to its *B. subtilis* counterpart.

Multiple sequence alignments of the *L. monocytogenes* RsbV, RsbW, and σ^B proteins with their counterparts from *B. subtilis* and *S. aureus* revealed highly conserved subregions within each (Fig. 2). Alignment of the RsbU homologs predicts that our cloned fragment contains only about half of the *L. monocytogenes* *rsbU* gene (Fig. 2A). Within RsbV, we identified three subregions, designated I through III, that appear to be highly conserved (Fig. 2B). Region II includes the conserved serine residue that can be aligned with the serine residue in the homolog SpoIIAA, which is the site of phosphorylation by the SpoIIAB homolog RsbW (17, 37, 38). How domains I and III contribute to RsbV structure, function, or both remains to be determined. As with RsbV, we also observed three highly conserved subregions, designated regions I, IIa, and IIb, within the *L. monocytogenes* RsbW homolog (Fig. 2C). These regions have previously been proposed to play a role in ATP binding of the RsbW homolog SpoIIAB by virtue of their similarities to domains I and II of histidine protein kinases (37). The σ^B proteins, which demonstrated the highest identity scores, showed the highest degree of identity in regions 2.2, 2.4, and 4.2, which are believed to participate in core RNA polymerase binding and -10 and -35 recognition, respectively (27).

Stress-dependent activation of σ^B in *L. monocytogenes*. The intergenic region between *rsbU* and *rsbV* is the location of a known σ^B -dependent promoter in *B. subtilis* (28) that serves as an autocatalytic device for increasing the levels of mRNA encoding the RsbV, RsbW, RsbX, and σ^B proteins under conditions of σ^B activation (7, 13). We therefore examined this region by primer extension to determine if a σ^B -dependent promoter is similarly positioned in *L. monocytogenes* and if its activity is stress dependent. A primer (VPR0M2) that is complementary to positions +63 to +83 relative to the *rsbV* initiation codon was end labeled and used in primer extension analyses on mRNA extracted from logarithmically growing cells before and after environmental stress (4% NaCl or pH 5.3) or entrance into stationary phase. As shown in Fig. 3, no transcript from this region was detected in logarithmically growing cells; however, increasing the osmolarity of the medium, decreasing its pH, or permitting the cells to enter stationary phase led to the appearance of an extension product mapping to position 646 of the nucleotide sequence. The initiation site of this transcript lies immediately downstream of sequences that can be aligned with known σ^B -dependent promoters (Fig. 4), indicating that this promoter may be utilized by σ^B -RNA polymerase holoenzyme under stress conditions.

To confirm that the stress-induced transcript is σ^B dependent, we performed primer extension assays on RNA extracted from both the wild type, LO4035, and its isogenic derivative, LMA2B, which carries an allele of *sigB* (*sigB::km*) that has been insertional inactivated by the introduction of a kanamycin resistance gene (see Materials and Methods). As predicted, only RNA samples from the wild-type strain yielded primer extension products after osmotic upshifting, temperature upshifting, acidification, or entry into stationary phase (Fig. 3B). Thus, the stress-induced transcript relies on σ^B and appears to be a conserved autocatalytic mechanism for increasing the abundance of the *rsbV-sigB-rsbX* transcript upon the perception of stress.

Because of the autocatalytic nature of σ^B , the level of the σ^B -dependent transcript that originates upstream of *rsbV* is a convenient measure of σ^B activity in the cell. We therefore used our primer extension assay to measure the relative effects of different environmental conditions on σ^B activity in *L. monocytogenes* (Fig. 3C). As observed in the previous experiment, no transcript was detected in logarithmically growing

A

```

121          -----          FMIKVALAGM TGDGRKPSIV LESINQVAEE NINDNMTIM
LmRsbU
BsuRsbU SVPAKQMSGD YYHEVDRKE. SINIAIADVI GKIPAAALCM SMIKYADSL PETGHPFSQV LKNLIRVYEQ NVDAEMFTIM
SauRsbU SVAAQKVSQD YFNLDHNDG TMSFAVADVI CKGIPAAALM SMIKFGMDSY .GHSQLPDSG LKRLNRVVEK NINQRMVFTM

          280
LmRsbU FYGLYHEDTH LFEYCSAGHE LGLYYQHKEN SFSDLYAKGL PLGVDRNAVY RQFDKKIEVG DAIFIMSDGV TETRTRANG.F
BsuRsbU FYANYMDKH QFTYASAGHE PFTYYSQKDN TFDLEAKGL VLGISQDYDY RQFDQHLERG DMIVLFSQDV TECKTFENG.F
SauRsbU FYGLYEEMNH LLVYCSAGHE PFTYIRAEKE EFEEISYRGR VLGISSQTRY QQ.EIPIYLD DLIIILITDGV TEARNSEGTFF

          330
LmRsbU LEREELTEII AAHISLSAEK MVHAIYDQLV KMQNFELHDD FTLICIKRKT *
BsuRsbU LERPDLQKLI EEMHCSSAGE MVKNYDSLL KLQDFLODD FTLIVLRKV *
SauRsbU IDKQKLEIYI KKHKHMHPQD IVQIIEAIL KLFPNPKDD MTILIKRVN *
    
```

B

```

          I          II
1          80
LmRsbV MNISIEIKER DTDHIDIFA GEIDAYTAPK VKEALEVYQV KEG.IVLRID LTEVSYMDST GLGVVYQAFK SLRQRQSELV
BsuRsbV MNINVDVQKN END.IQVNTA GEIDVYSAPV LREKL.VPLA EGG.ADLRIC LKDVSYMDST GLGVVYQAFK MYKROQSGLK
SauRsbV MNLNIEFTTQ DK.FYEVKVG GELDVTYVPE LEEVLTFRQD DGT.RDIYVN LAVSYMDST GLGVVYQAFK ALMNDKGLI
SpoIIAA MSLGIDMNVK ES.VLCIRIT GELDHTAET LKGRVTSLE KDIRHIVLN LEDLSMOSS GLGVVYQAFK QIKQIGSEW

          110
LmRsbV LFGLSDRIFR LEFEITGLSDI IVIK.NVEGE MNGYNA*
BsuRsbV LENSERLIR LEFDITGLNDI IDISAKSEGG VQ*
SauRsbV ILGVSDRIGR LEFEITGLKOL MHNVEGTEV *
SpoIIAA VCAISPAVKR LEDMSGLEKI IRFEQSEQQR LITLGVAS*
    
```

C

```

          I
1          80
BsuRsbW MKNNADYIEM KVPAQPEYVG IIRLTLGVA SRMGTYDEI EDLKIAYSEA CTNAVQHAYK EDKN.GEVS I REGVFEDRLE
SauRsbW MQSKEDFIEM RVPASAEYSV LIRLTLGVSF SRAGATYDDI EDAKIAYSEA VTNAVKHAYK ENNVG IINI YFEILEDKIK
LmRsbW ~-~MHDKITL QLPFAKPEYVS LGRLLSLGIA SRAGFSYEAI EDLKIAYSEA ITNSVKHAFK GEDD.GEITV EYLIYEDKLE
SpoIIAB ~-~MKNEMHL EFSALSQNES FARVTVASFI AQDLPTMDEL TEIRTYVSEA VTNAIHHGY EENCEGKVIYI SVTLEDHVVT

          100          150
          IIa          IIb
BsuRsbW VIVADEGDSF DEDKQOQDL GPYPYPSHTVD QLSEGGLGLY IMETLNDVVR VQN..HSGVT VAMTRYLNGE RVDHDTTIKN YETN
SauRsbW IVISDKGSF DYETKTSKI GPYDKDENID FLREGGLGLF LIESLNDVYT VYK..ESGVT ISMTRYIKKE QVRNNGERVE IS
LmRsbW VRVSDNGSF DLETRKQEI GPYEVGEDAE MMRIGGLGLF LIETLNDVVR LYY..DEGVS VMMTRYINEK QVEENAKSIS T
SpoIIAB NIIRDEGLI DLEEARQPL FTTRKPE... LESSGMP IMENFMDDVS IDSSPEMGTI TRTLKHLKLS KALCN
    
```

D

```

1          70
LmsigB MPK VSPDKPEAKE KYIWIIPAAY ENGGQDAQYN LVWYKNLVE SIARKYSQEK SFHEDLVQVG NIGLLGAIKR
BsuSigB LIMTQ PSKTTKLTQ EVDRLISDQY TKODEQAGET LVRVYTNLVD MLAKKYSQEK SFHEDLQWVG MIGLLGAIKR
SausigB MAKE SKPANEISPE QINQWIKHQ ENKNTDAQDK LVKHVQKLE SLAYKYSQEK SHHEDLVQVG MVGLIGAINR

          2.1          2.2          150
LmsigB YDATFGKSF EFAVPTIVGE IKRFLROKTN SVHVPRRIKE LGPRIKNAVE ELTRELQSSP QISDIADFIG VTEEEVLEAM
BsuSigB YDVPVQKSF EFAIETIIGE IKRFLROKTN SVHVPRRIKE LGPRIQAVD QLTTEQORSP KVVEIAEFLD VSEEEVLETM
SausigB FDMSEFKFE AFLVPTIVGE IKRYLRDKTN SVHVPRRIKE IGPRIKRVSD ELTAELEERSP SISEIADRL VSEEEVLEAM

          2.3          2.4          3.1          230
LmsigB EMGKSYQALS VDHSEADSD GSTITLLDVV GGTDDGFERY NQRMILLEKVL PVLDEREQKI LQFTFIENRS QKETGELLDI
BsuSigB EMGKSYQALS VDHSEADSD GSTVTLLDIV GSEQDGYERV NQQLMLQSVL HVLSREKQI IDLTYIQNKS QKETGDILGI
SausigB EMGQSYNALS VDHSEADKDK GSTVTLLDIM GOODDHYDLT EKRMLLEKIL PILSDREREI IQCTFIEGLS QKETGERIGL

          3.1          3.2          4.1          4.2          250
LmsigB SQMHVSRIGR QAIKKLREAL QNEEVE*~
BsuSigB SQMHVSRIGR KAVKKLREAL IEDPSMELM*
SausigB SQMHVSRIGR TAIKKLQEAH HQ~

          4.2
    
```

E

```

1          100
LmRsbX .MNRKAVESNNLFVFRSKALQQYCGDVYVYTHEDENGFLYVLSDDGLSGLLEANRAAKATVDAIKEDIHADITDMLEKANQAVSGLRGAALAIKGDYLTK
BsuRsbX MIQVENEHIQTLVYQLNKEGKSIQGSFFMKADKELICAVADGLSGSLANESSAAIKDILVENYASDEVESIETRCNQAMKIKRGATATSLIKNFQR

          200
TLYYTQCNIRFYIMQEKDLIFPLSGSGLSRGKQYRLQSFYKPGSKFLMHSDDLVSRRVKSLESPLCVVKIGHLIERNILDIPDVTDFVMVGKFP
QFTYCSVGNVRFILHSPSGESFYPLISGLVSGKPKYKHTATYERKSKFIHTDGLNVPDIRSHLKRKQGSVEEISNSLRMYTTS.RKDDLTLYLQQLSE
    
```

FIG. 2. Multiple sequence alignments of the RsbU (A), RsbV (B), RsbW (C), σ^B (D), and RsbX (E) proteins with their homologs from *B. subtilis* (Bsu) and *S. aureus* (Sau). Lm, *L. monocytogenes*. (A through D) Alignments were derived by using the PILEUP program of the Genetics Computer Group. (B) The serine residue of SpoIIAA that is phosphorylated by SpoIIAB and is believed to be the site of RsbW-dependent phosphorylation of RsbV is indicated by an arrowhead. Highly conserved domains are shaded. (C) Alignment of the RsbW proteins and the SpoIIAB homolog from *B. subtilis*. Domains showing homology with regions I and II of the histidine protein kinase family of two-component system proteins are shaded, and residues within these domains that are identical in every homolog are boldfaced. (D) The conserved subregions of sigma factors that were identified previously by Helman and Chamberlin (27) are underlined with arrows and numbered. (E) Pairwise alignment of the *B. subtilis* and *L. monocytogenes* RsbX proteins was performed with BESTFIT. Vertical lines indicate identical residues, and the periods and colons indicate semiconservative and conservative changes, respectively.

cells; however, significant levels of the transcript were observed after cells had been exposed to 4% NaCl, 2% ethanol, acidification to a pH of 5.3, 1 mM EDTA, 0.15% H₂O₂, or a temperature upshift (from 25 to 48°C) or downshift (from 25 to

4°C). Each of these treatments led to the appearance of the σ^B -dependent transcript, indicating that σ^B activity was stimulated.

Although many of the conditions examined above are known

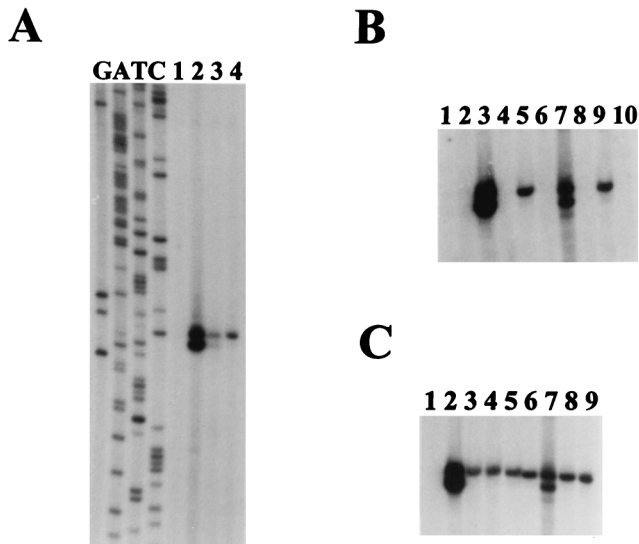


FIG. 3. Primer extension analyses of transcripts originating upstream of *rsbV* in *L. monocytogenes*. In each panel, 50 μ g of each RNA sample was used as a template for extension of the labeled VPROM2 primer. (A) RNA was derived from logarithmically growing cells before (lane 1) and after the addition of 4% NaCl (lane 2), entrance into stationary phase (lane 3), or acidification of the medium to pH 5.3 with glacial acetic acid (lane 4). The sequence ladder was derived from sequencing reactions using the VPROM2 primer. (B and C) Bands are shown at the same position relative to the sequencing ladder in panel A. (B) RNA samples were derived from logarithmically growing cells (25°C) of LO4035 (wild type) (lanes 1, 3, 5, 7, and 9) and the isogenic *sigB::km* mutant LMA2B (lanes 2, 4, 6, 8, and 10) before stress (lanes 1 and 2) and 20 min after the addition of 4% NaCl (lanes 3 and 4), acidification to pH 5.3 with glacial acetic acid (lanes 5 and 6), a temperature upshift to 48°C (lanes 7 and 8), and entrance into stationary phase (lanes 9 and 10). (C) RNA samples were derived from LO4035 (wild type) during logarithmic growth at 25°C (lane 1) and 20 min after the addition of 4% NaCl (lane 2), 2% ethanol (lane 3), 1 mM EDTA (lane 4), 0.15% H₂O₂ (lane 5), or glacial acetic acid to pH 5.3 (lane 6), a temperature upshift to 48°C (lane 7), a downshift to 4°C (lane 8), or entrance into stationary phase (lane 9).

to activate σ^B in *B. subtilis*, we noted unique aspects of the *L. monocytogenes* responses. First, based on the intensity of the labeled bands, osmotic upshifting gave rise to the highest degree of stimulation relative to the other treatments. The magnitude of this response relative to the other conditions is striking and appears to be greater than what has been observed in *B. subtilis* after a similar upshift (13). We note, however, that the dose-response curve of σ^B activity is complex and that the “doses” of each stress used in our experiments may not be optimal. Next, we observed two conditions, temperature downshifting and the addition of EDTA, which activated σ^B only in *L. monocytogenes*. Experiments with *B. subtilis* cells grown under similar conditions failed to yield significant activation of σ^B activity based on measurements of transcription from the σ^B -dependent transcriptional fusion (*ctc::lacZ*) and on measurements of σ^B by Western blotting (4).

Effects of the *sigB::km* mutation on osmotolerance in *L. monocytogenes*. Because we observed the highest level of σ^B activity after an osmotic upshift, we next examined whether the absence of *sigB* would have any effect on the ability of *L. monocytogenes* to grow under conditions of high osmotic strength. We initially evaluated the growth of LO4035 and the isogenic LMA2B derivative (*sigB::km*) in BHI after logarithmically growing cells were exposed to an osmotic upshift by the addition of 6% NaCl. As illustrated in Fig. 5A, the addition of NaCl to the cultures led to an abrupt decrease in the growth rate. Relative to the parental strain, however, the *sigB::km*

mutant showed a slightly reduced, but reproducible, rate after upshifting of the culture during the latter stages of logarithmic growth, suggesting that the absence of σ^B only slightly impaired adaptation to the osmotic upshift in this complex growth medium.

Since the growth medium used in the above experiment provides several amino acids and the quaternary ammonium compounds betaine and carnitine, which can be used by *L. monocytogenes* as osmoprotectants (9, 31, 32), we next tested the ability of the isogenic strains to grow in DM under conditions of high osmolarity when only a single osmoprotectant was provided (Fig. 5B and C). When overnight cultures were inoculated into fresh DM of low osmolarity, only a brief lag was observed. Inoculation of the same cells into DM containing 3% NaCl (514 mM), however, prevented growth of both strains during the course of the experiments. When the cells were inoculated into DM containing 3% NaCl and 1 mM betaine (Fig. 5B) or 1 mM carnitine (Fig. 5C), the wild-type strain was capable of growth after a prolonged lag period (30 h for betaine and 40 h for carnitine). In contrast, LMA2B demonstrated a substantially longer lag period in the presence of betaine (Fig. 5B) and failed to grow in the presence of carnitine within the time frame of the experiment (Fig. 5C). These results indicate that the absence of σ^B impairs the ability of *L. monocytogenes* to use betaine and carnitine as osmoprotectants, most likely due to defects in the transport of the osmoprotectants.

Betaine accumulation is defective in the *sigB::km* strain. To confirm that the absence of σ^B impairs the accumulation of betaine, we measured the ability of the isogenic strains to accumulate [¹⁴C]betaine under conditions of high and low osmolarity. Cells from both LO4035 and LMA2B were grown to mid-logarithmic phase in BHI (OD₆₀₀, ~0.4) and then were harvested and washed at room temperature to prevent temperature-dependent induction of σ^B activity. As shown in Fig. 6, the two strains accumulated similar amounts of labeled betaine when incubated in phosphate buffer alone, confirming the presence of a constitutive betaine transport system that has been described previously (49). When 3% NaCl was added to the cells, betaine accumulation in the wild-type strain LO4035 was stimulated considerably. In contrast, inactivation of the *sigB* gene in LMA2B prohibited osmotic stimulation of betaine accumulation. These results are consistent with a model in which σ^B mediates a sodium-inducible or osmotically inducible

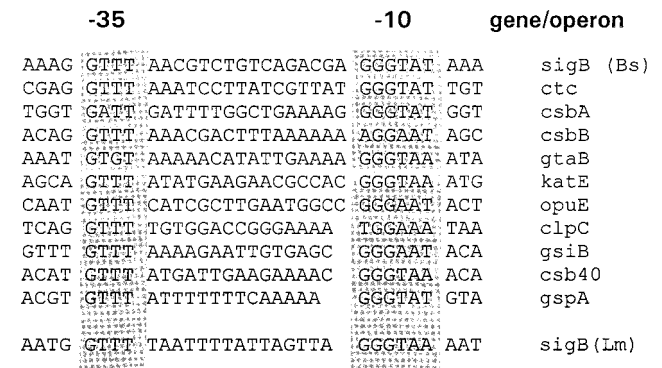


FIG. 4. Alignment of known σ^B -dependent promoters. The sequences immediately upstream of the σ^B -dependent transcription start site of the *L. monocytogenes* *rsbV* gene are aligned with known σ^B -dependent promoters from *B. subtilis*. The most highly conserved residues, centering around the -10 and -35 regions, are shaded. The alignment of *B. subtilis* promoters was derived from von Blohn et al. (53). Bs, *B. subtilis*; Lm, *L. monocytogenes*.

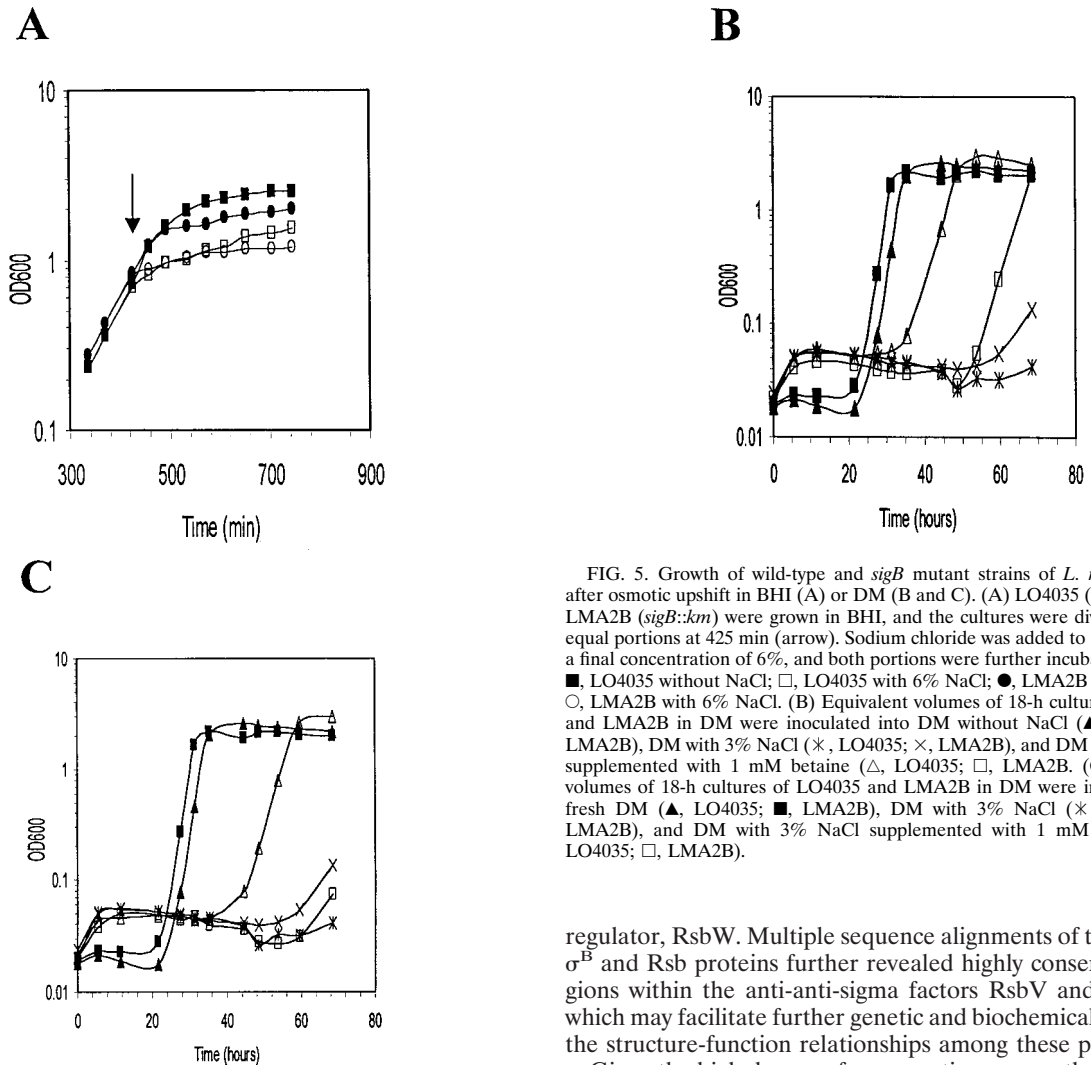


FIG. 5. Growth of wild-type and *sigB* mutant strains of *L. monocytogenes* after osmotic upshift in BHI (A) or DM (B and C). (A) LO4035 (wild type) and LMA2B (*sigB::km*) were grown in BHI, and the cultures were divided into two equal portions at 425 min (arrow). Sodium chloride was added to one portion to a final concentration of 6%, and both portions were further incubated. Symbols: ■, LO4035 without NaCl; □, LO4035 with 6% NaCl; ●, LMA2B without NaCl; ○, LMA2B with 6% NaCl. (B) Equivalent volumes of 18-h cultures of LO4035 and LMA2B in DM were inoculated into DM without NaCl (▲, LO4035; ■, LMA2B), DM with 3% NaCl (*, LO4035; ×, LMA2B), and DM with 3% NaCl supplemented with 1 mM betaine (△, LO4035; □, LMA2B). (C) Equivalent volumes of 18-h cultures of LO4035 and LMA2B in DM were inoculated into fresh DM (▲, LO4035; ■, LMA2B), DM with 3% NaCl (*, LO4035; ×, LMA2B), and DM with 3% NaCl supplemented with 1 mM carnitine (△, LO4035; □, LMA2B).

component of betaine transport. Thus, σ^B appears to play an integral role in coordinating the physiological adaptation of *L. monocytogenes* to osmotic upshifting.

DISCUSSION

The ability of *L. monocytogenes* to grow under conditions of suboptimal temperature, osmolarity, and pH may favor its growth in contaminated food products and promote survival during transit through the gastrointestinal tract and entry into host cell phagosomes. In this report, we have used genetic analyses and physiological studies to examine how *L. monocytogenes* coordinates such physiological responses through the activity of an alternative sigma subunit of RNA polymerase, σ^B .

Analysis of the physical organization of the *L. monocytogenes* *rsbU*, *rsbV*, *rsbW*, *sigB*, and *rsbX* genes demonstrated that the genes are organized in much the same manner as they are in the related gram-positive organisms *B. subtilis* and *S. aureus*, with the exception of *rsbX*, which is absent downstream in *S. aureus*. These conserved features include an extensive overlap of the *rsbW* and *sigB* coding regions, further supporting an important role for translational coupling of σ^B to its primary

regulator, RsbW. Multiple sequence alignments of the putative σ^B and Rsb proteins further revealed highly conserved subregions within the anti-anti-sigma factors RsbV and SpoIIAA, which may facilitate further genetic and biochemical analysis of the structure-function relationships among these proteins.

Given the high degree of conservation among the RsbUVW and σ^B proteins, we are intrigued by the low degree of identity between the *L. monocytogenes* and *B. subtilis* RsbX proteins. In *B. subtilis*, RsbX is the farthest-upstream member of the Rsb signal transduction cascade (29, 50, 58). This divergence may therefore reflect adaptation of *rsbX* to sensing functions that are attuned to unique aspects of the physiology and ecology of *L. monocytogenes*. We are currently identifying the other *rsb* genes in *L. monocytogenes* to determine how differences in structure might correspond to differences in function.

In addition to the divergence in the primary sequence of RsbX, we also observed unique characteristics of the physical and chemical conditions that elicit σ^B activity in *L. monocytogenes*, including responses to temperature downshifting and to the presence of EDTA, and the magnitude of the response to osmotic upshifting. Induction of σ^B activity subsequent to a temperature downshift suggests that σ^B may contribute to the unique psychrotrophic characteristics of this organism. Since betaine has been demonstrated to act as a cryoprotectant as well as an osmoprotectant in *L. monocytogenes* (31), the participation of σ^B in betaine accumulation suggests that low-temperature induction of σ^B activity may also stimulate betaine accumulation after a temperature downshift. We are currently testing this hypothesis.

Induction of σ^B activity in response to EDTA is also notable. The response may be due to decreased availability of divalent

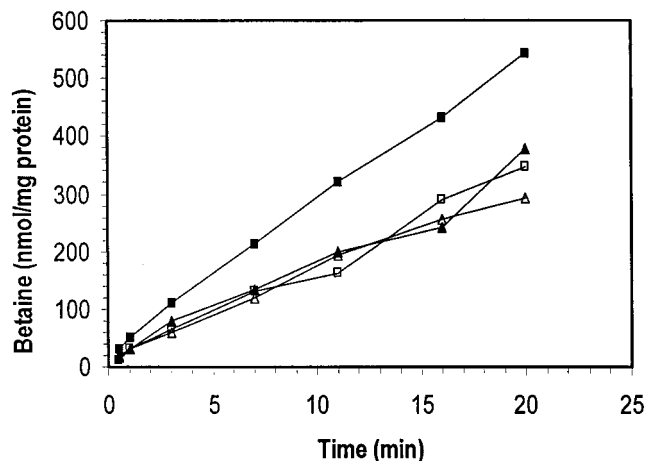


FIG. 6. Betaine accumulation in LO4035 and LMA2B. Cells in the mid-logarithmic growth phase (OD_{600} , ~0.4) were harvested, washed, and resuspended in potassium phosphate buffer. The washed cell suspension from each strain was energized by the addition of glucose and then divided into two equal volumes, and sodium chloride to a final concentration of 3% was added to one of the samples. After 20 min of induction, ^{14}C -labeled betaine was added to each sample, and aliquots were removed over time, harvested by centrifugation through oil, and counted by scintillation counting. Symbols: □, LO4035; ■, LO4035 plus 3% NaCl; ▲, LMA2B; △, LMA2B plus 3% NaCl.

cations within the cytoplasm. Alternatively, it could be an indirect response to destabilization of teichoic acids or effects on membrane proteins that require divalent ions for structure or function. Given that the Rsb cascade responds to many types of physical signals (pH, temperature, and osmolarity), it may be that compromising the integrity of the envelope is sufficient to elicit σ^B activity. In support of this idea is the fact that the *S. aureus sigB* gene was originally discovered as a transposon insertion that led to sensitivity of the cells to methicillin (57), suggesting a role for σ^B in cell wall-associated functions in this organism. We are currently determining which cation limitation invokes σ^B activity and whether it is due to its declining concentration inside or outside the cell.

Role of σ^B in osmotolerance in *L. monocytogenes*. The magnitude of σ^B induction that was observed after an osmotic upshift (Fig. 3) initially suggested that σ^B function might be important in mediating osmotolerance. Experiments with the isogenic *sigB*⁺ and *sigB* mutant strains subsequently demonstrated that the absence of σ^B impaired the ability of *L. monocytogenes* to use betaine and carnitine as osmoprotectants (Fig. 5B and C). This defect was further shown to result from the inability of the *sigB* mutant strain to stimulate betaine accumulation after an osmotic upshift (Fig. 6).

Physiological studies with *L. monocytogenes* have previously demonstrated the existence of independent systems for betaine and carnitine uptake (25, 48). Betaine is transported by a sodium-driven transporter (25) and is the principal osmoprotectant in the presence of other osmoprotectants, while carnitine transport appears to be ATP dependent and subject to inhibition by betaine (25, 48). We did not observe defects in constitutive betaine accumulation in the *sigB* mutant but instead found that this strain failed to stimulate accumulation after an osmotic upshift (Fig. 6). Previous studies have demonstrated that betaine uptake in *L. monocytogenes* is stimulated by osmotic upshifting (31). These results are consistent with σ^B mediating a sodium-inducible or osmotically inducible component of betaine transport. This function could be a consequence of σ^B directing the transcription of one or more

genes encoding a betaine transporter or, alternatively, a regulatory protein that modulates the synthesis or activity of a betaine transport system. Since betaine is the osmoprotectant of choice, when available (48), the σ^B -dependent component of betaine transport in *L. monocytogenes* may therefore be the primary system for osmotic stimulation. Consistent with this hypothesis, we observed significant induction of σ^B activity in response to osmotic upshifting.

The use of σ^B as a primary means for coordinating osmotic responses in *L. monocytogenes* is apparently unique. *B. subtilis sigB* mutants do not show obvious defects in osmotolerance (53), likely due to the existence of both multiple regulatory systems and redundant transporters in this organism. Indeed, three independent transporters can be used for proline and betaine uptake in *B. subtilis* (30, 53). Moreover, in the case of the *opuE* gene, which encodes a proline transporter, its σ^B -dependent promoter is one of two osmotically inducible promoters (53). The adoption of redundant genes encoding transport systems in this organism may have led to dissemination of the role of coordinating their expression among other regulatory systems in order to bring expression into harmony with the availability of different substrates. Given that several sophisticated adaptive responses such as sporulation and competence are also available to *B. subtilis*, the role of the σ^B regulon may have been further diminished to accommodate these pathways. Thus, in organisms, such as *L. monocytogenes*, that do not possess such sophisticated adaptive responses, σ^B may serve a primary role in coordinating responses to physical changes in the environment. Further comparative studies of the σ^B regulon from related gram-positive organisms would therefore provide important information about the role of adaptive responses in the physiology and ecology of these organisms.

ACKNOWLEDGMENTS

This work was supported by grants from Li-Cor, Inc., and from the USDA Midwest Advanced Food Manufacturing Alliance to A.K.B. L.A.B. is a recipient of the Widaman Trust Distinguished Graduate Assistant Fellowship.

We thank Abraham Oommen and Margaret Esser for performing the DNA sequence analysis and Mark Morrison and Jeff Cirillo for critical reading of the manuscript.

L. A. Becker and M. S. Çetin contributed equally to this work.

REFERENCES

1. Akbar, S., C. M. Kang, T. A. Gaidenko, and C. W. Price. 1997. Modulator protein RsbR regulates environmental signalling in the general stress pathway of *Bacillus subtilis*. *Mol. Microbiol.* **24**:567-578.
2. Alper, S., L. Duncan, and R. Losick. 1994. An adenosine nucleotide switch controlling the activity of a cell type-specific transcription factor in *Bacillus subtilis*. *Cell* **77**:195-205.
3. Antelmann, H., J. Bernhardt, R. Schmid, and M. Hecker. 1995. A gene at 333° on the *Bacillus subtilis* chromosome encodes the newly identified σ^B -dependent general stress protein GspA. *J. Bacteriol.* **177**:3540-3545.
4. Becker, L. A., and A. K. Benson. 1998. Unpublished data.
5. Benson, A. K., and W. G. Haldenwang. 1992. Characterization of a regulatory network that controls σ^B expression in *Bacillus subtilis*. *J. Bacteriol.* **174**:749-757.
6. Benson, A. K., and W. G. Haldenwang. 1993. *Bacillus subtilis* σ^B is regulated by a binding protein (RsbW) that blocks its association with core RNA polymerase. *Proc. Natl. Acad. Sci. USA* **90**:2330-2334.
7. Benson, A. K., and W. G. Haldenwang. 1993. The σ^B -dependent promoter of the *Bacillus subtilis sigB* operon is induced by heat shock. *J. Bacteriol.* **175**:1929-1935.
8. Benson, A. K., and W. G. Haldenwang. 1993. Regulation of σ^B levels and activity in *Bacillus subtilis*. *J. Bacteriol.* **175**:2347-2356.
9. Beumer, R. R., M. C. Te Giffel, L. J. Cox, F. M. Rombouts, and T. Abee. 1994. Effect of exogenous proline, betaine, and carnitine on growth of *Listeria monocytogenes* in a minimal medium. *Appl. Environ. Microbiol.* **60**:1359-1363.
10. Binne, C., M. Lampe, and R. Losick. 1986. Gene encoding the σ^{37} species of RNA polymerase σ factor from *Bacillus subtilis*. *Proc. Natl. Acad. Sci. USA* **83**:5943-5947.

11. Boylan, S. A., A. R. Redfield, and C. W. Price. 1993. Transcription factor σ^B of *Bacillus subtilis* controls a large stationary-phase regulon. *J. Bacteriol.* **175**:3957–3963.
12. Boylan, S. A., A. Rutherford, S. M. Thomas, and C. W. Price. 1992. Activation of *Bacillus subtilis* transcription factor σ^B by a regulatory pathway responsive to stationary-phase signals. *J. Bacteriol.* **174**:3695–3706.
13. Boylan, S. A., A. Rutherford, S. M. Thomas, and C. W. Price. 1993. Stress-induced activation of the σ^B transcription factor of *Bacillus subtilis*. *J. Bacteriol.* **175**:7931–7937.
14. Camilli, A., D. A. Portnoy, and P. Youngman. 1990. Insertional mutagenesis of *Listeria monocytogenes* with a novel Tn917 derivative that allows direct cloning of DNA flanking transposon insertions. *J. Bacteriol.* **172**:3738–3744.
15. Chomczynski, P., and N. Sacchi. 1987. Single-step method of RNA isolation by acid guanidinium thiocyanate-phenol-chloroform extraction. *Anal. Biochem.* **162**:156–159.
16. Christensen, D. P., and R. W. Hutkins. 1994. Glucose uptake by *Listeria monocytogenes* Scott A and inhibition by pediocin JD. *Appl. Environ. Microbiol.* **60**:3870–3873.
17. Diederich, B., J. F. Wilkinson, T. Magnin, M. Najafi, J. Errington, and M. D. Yudkin. 1994. Role of interactions between SpoIIAA and SpoIIAB in regulating cell-specific transcription factor sigma F of *Bacillus subtilis*. *Genes Dev.* **8**:2653–2663.
18. Dufour, A., and W. G. Haldenwang. 1994. Interactions between a *Bacillus subtilis* anti-sigma factor (RsbW) and its antagonist (RsbV). *J. Bacteriol.* **176**:1813–1820.
19. Engelmann, S., and M. Hecker. 1996. Impaired oxidative stress resistance of *Bacillus subtilis* *sigB* mutants and the role of *katA* and *katE*. *FEMS Microbiol. Lett.* **145**:63–69.
20. Englemann, S., C. Linder, and M. Hecker. 1995. Cloning, nucleotide sequence, and regulation of *katE* encoding a σ^B -dependent catalase in *Bacillus subtilis*. *J. Bacteriol.* **177**:5598–5605.
21. Farber, J. M., and B. E. Brown. 1990. Effect of prior heat shock on heat resistance of *Listeria monocytogenes* in meat. *Appl. Environ. Microbiol.* **56**:1584–1587.
22. Farber, J. M., and P. I. Peterkin. 1991. *Listeria monocytogenes*, a food-borne pathogen. *Microbiol. Rev.* **55**:476–511.
23. Finlay, B. B., and P. Cossart. 1997. Exploitation of mammalian host cell functions by bacterial pathogens. *Science* **276**:718–725.
24. Gellin, B., and C. Broome. 1989. Listeriosis. *JAMA* **261**:1313–1320.
25. Gerhardt, P. N., L. T. Smith, and G. M. Smith. 1996. Sodium-driven, osmotically activated glycine betaine transport in *Listeria monocytogenes* membrane vesicles. *J. Bacteriol.* **178**:6105–6109.
26. Guerout-Fleury, A.-M., K. Shazand, N. Frandsen, and P. Stragier. 1995. Antibiotic-resistance cassettes for *Bacillus subtilis*. *Gene* **167**:335–337.
27. Helman, J. D., and M. J. Chamberlin. 1988. Structure and function of bacterial sigma factors. *Annu. Rev. Biochem.* **57**:839–872.
28. Kalman, S., M. L. Duncan, S. M. Thomas, and C. W. Price. 1990. Similar organization of the *sigB* and *spoIIA* operons encoding alternate sigma factors of *Bacillus subtilis*. *J. Bacteriol.* **172**:5575–5585.
29. Kang, C. M., M. S. Brody, S. Akbar, X. Yang, and C. W. Price. 1996. Homologous pairs of regulatory proteins control activity of *Bacillus subtilis* transcription factor σ^B in response to environmental stress. *J. Bacteriol.* **178**:3846–3853.
30. Kappes, R. M., B. Kempf, and E. Bremer. 1996. Three transport systems for the osmoprotectant glycine betaine operate in *Bacillus subtilis*: characterization of OpuD. *J. Bacteriol.* **178**:5071–5079.
31. Ko, R., L. T. Smith, and G. M. Smith. 1994. Glycine betaine confers enhanced osmotolerance and cryotolerance on *Listeria monocytogenes*. *J. Bacteriol.* **176**:426–431.
32. Kroll, R. G., and P. A. Patchett. 1992. Induced acid tolerance in *Listeria monocytogenes*. *Lett. Appl. Microbiol.* **14**:224–227.
33. Krüger, E., T. Msadek, and M. Hecker. 1996. Alternate promoters direct stress-induced transcription of the *Bacillus subtilis* *clpC* operon. *Mol. Microbiol.* **20**:713–723.
34. Kullik, I., and P. Giachino. 1997. The alternative sigma factor σ^B in *Staphylococcus aureus*: regulation of the *sigB* operon in response to growth phase and heat shock. *Arch. Microbiol.* **167**:151–159.
35. Marron, L., N. Emerson, C. G. Gahan, and C. Hill. 1997. A mutant of *Listeria monocytogenes* LO28 unable to induce an acid tolerance response displays diminished virulence in a murine model. *Appl. Environ. Microbiol.* **63**:4945–4947.
36. Miller, A. J. 1992. Combined water activity and solute effects on growth and survival of *Listeria monocytogenes* Scott A. *J. Food Prot.* **55**:414–418.
37. Min, K.-T., C. M. Hilditch, B. Diederich, J. Errington, and M. D. Yudkin. 1993. σ^F , the first compartment-specific transcription factor of *Bacillus subtilis*, is regulated by an anti-sigma factor that is also a protein kinase. *Cell* **74**:735–742.
38. Najafi, S. M., A. C. Willis, and M. D. Yudkin. 1995. Site of phosphorylation of SpoIIAA, the anti-anti-sigma factor for sporulation-specific sigma F of *Bacillus subtilis*. *J. Bacteriol.* **177**:2912–2913.
39. Pine, L., G. B. Malcom, J. B. Brooks, and M. I. Daneshvar. 1989. Physiological studies on the growth and utilization of sugars by *Listeria* species. *Can. J. Microbiol.* **35**:245–254.
40. Portnoy, D. A., T. Chakraborty, W. Goebel, and P. Cossart. 1992. Molecular determinants of *Listeria monocytogenes* pathogenesis. *Infect. Immun.* **60**:1263–1267.
41. Roberts, T., and R. Pinner. 1990. Economic impact of disease caused by *Listeria monocytogenes*, p. 137–149. In A. J. Miller, J. L. Smith, and G. A. Somkuti (ed.), *Foodborne listeriosis*. Elsevier Science Publishing Co., Inc., Amsterdam, The Netherlands.
42. Rouquette, C., M. T. Ripio, E. Pellegrini, J. M. Bolla, R. I. Tascon, J. A. Vázquez-Boland, and P. Berche. 1996. Identification of a ClpC ATPase required for stress tolerance and *in vivo* survival of *Listeria monocytogenes*. *Mol. Microbiol.* **21**:977–987.
43. Sheehan, B., C. Kocks, S. Dramsi, E. Gouin, A. D. Klarsfeld, J. Mengaud, and P. Cossart. 1994. Molecular and genetic determinants of the *Listeria monocytogenes* infectious process. *Curr. Top. Microbiol. Immunol.* **192**:187–216.
44. Smith, K., and P. Youngman. 1992. Use of a new integrational vector to investigate compartment-specific expression of the *Bacillus subtilis* *spoIIIM* gene. *Biochimie* **74**:705–711.
45. Smith, L. T. 1996. Role of osmolytes in adaptation of osmotically stressed and chill-stressed *Listeria monocytogenes* grown in liquid media and on processed meat surfaces. *Appl. Environ. Microbiol.* **62**:3088–3093.
46. Varón, D., S. A. Boylan, K. Okamoto, and C. W. Price. 1993. *Bacillus subtilis* *gatB* encodes UDP-glucose pyrophosphorylase and is controlled by stationary-phase transcription factor σ^B . *J. Bacteriol.* **175**:3964–3971.
47. Varón, D., M. S. Brody, and C. W. Price. 1996. *Bacillus subtilis* operon under the dual control of the general stress transcription factor σ^B and the sporulation transcription factor σ^H . *Mol. Microbiol.* **20**:339–350.
48. Verheul, A., E. Glaasker, B. Poolman, and T. Abee. 1997. Betaine and L-carnitine transport by *Listeria monocytogenes* Scott A in response to osmotic signals. *J. Bacteriol.* **179**:6979–6985.
49. Verheul, A., F. M. Rombouts, R. R. Beumer, and T. Abee. 1995. An ATP-dependent L-carnitine transporter in *Listeria monocytogenes* is involved in osmoprotection. *J. Bacteriol.* **177**:3205–3212.
50. Voelker, U., A. Dufour, and W. G. Haldenwang. 1995. The *Bacillus subtilis* *rsbU* gene product is necessary for RsbX-dependent regulation of σ^B . *J. Bacteriol.* **177**:114–122.
51. Voelker, U., A. Voelker, B. Maul, M. Hecker, A. Dufour, and W. G. Haldenwang. 1995. Separate mechanisms activate σ^B of *Bacillus subtilis* in response to environmental and metabolic stress. *J. Bacteriol.* **177**:3771–3780.
52. Völker, U., S. Engelmann, B. Maul, S. Riethdorf, A. Völker, R. Schmid, H. Mach, and M. Hecker. 1994. Analysis of the induction of general stress proteins of *Bacillus subtilis*. *Microbiology* **140**:741–752.
53. Von Blohn, C., B. Kempf, R. M. Kappes, and E. Bremer. 1997. Osmostress response in *Bacillus subtilis*: characterization of a proline uptake system (OpuE) regulated by high osmolarity and the alternative transcription factor sigma B. *Mol. Microbiol.* **25**:175–187.
54. Waite, B. L., G. R. Siragusa, and R. W. Hutkins. 1998. Bacteriocin inhibition of two glucose transport systems in *Listeria monocytogenes*. *J. Appl. Microbiol.* **84**:715–721.
55. Wilkins, P. O., R. Bourgeois, and R. G. E. Murray. 1972. Psychrotrophic properties of *Listeria monocytogenes*. *Can. J. Microbiol.* **18**:543–551.
56. Wise, A. A., and C. W. Price. 1995. Four additional genes in the *sigB* operon of *Bacillus subtilis* that control activity of the general stress factor σ^B in response to environmental signals. *J. Bacteriol.* **177**:123–133.
57. Wu, S., H. de Lencastre, and A. Tomasz. 1996. Sigma-B, a putative operon encoding alternate sigma factor of *Staphylococcus aureus* RNA polymerase: molecular cloning and DNA sequencing. *J. Bacteriol.* **178**:6036–6042.
58. Yang, X., C. M. Kang, M. S. Brody, and C. W. Price. 1996. Opposing pairs of serine protein kinases and phosphatases transmit signals of environmental stress to activate a bacterial transcription factor. *Genes Dev.* **10**:2265–2275.