



HHS Public Access

Author manuscript

Metabolism. Author manuscript; available in PMC 2024 August 01.

Published in final edited form as:

Metabolism. 2023 August ; 145: 155591. doi:10.1016/j.metabol.2023.155591.

Fructose Induced KHK-C Can Increase ER Stress Independent of its Effect on Lipogenesis to Drive Liver Disease in Diet-Induced and Genetic Models of NAFLD

Se-Hyung Park¹, Robert N. Helsley¹, Taghreed Fadhel¹, Jennifer L.S. Willoughby², Leila Noetzi², Ho-Chou Tu², Marie H. Solheim^{3,4}, Shiho Fujisaka^{3,5}, Hui Pan⁶, Jonathan M. Dreyfuss⁶, Joanna Bons⁷, Jacob Rose⁷, Christina D. King⁷, Birgit Schilling⁷, Aldons J. Lusis⁸, Calvin Pan⁸, Manoj Gupta⁹, Rohit N. Kulkarni⁹, Kevin Fitzgerald², Philip A. Kern¹⁰, Senad Divanovic¹¹, C. Ronald Kahn³, Samir Softic^{1,3,12}

¹Department of Pediatrics, Division of Pediatric Gastroenterology, University of Kentucky College of Medicine, Lexington, KY. 40536.

²Alnylam Pharmaceuticals Inc., Cambridge, MA. 02142.

³Section on Integrative Physiology and Metabolism, Joslin Diabetes Center, Harvard Medical School, Boston, MA. 02215

⁴Department of Neuronal Control of Metabolism, Max Planck Institute for Metabolism Research, 50931 Cologne, Germany.

⁵First Department of Internal Medicine, University of Toyama, Toyama 930-0194, Japan.

⁶Bioinformatics and Biostatistics Core, Joslin Diabetes Center, Harvard Medical School, Boston, MA

⁷Proteomics and Aging Center, Buck Institute for Research on Aging, Novato, CA 94945.

⁸Department of Medicine/Division of Cardiology, Department of Human Genetics, A2-237 Center for the Health Sciences, University of California, Los Angeles, Los Angeles, CA USA.

⁹Section of Islet Cell and Regenerative Biology, Joslin Diabetes Center; Harvard Stem Cell Institute, Harvard Medical School, Boston, MA 02215

¹⁰Department of Medicine, Division of Endocrinology, University of Kentucky College of Medicine, Lexington, KY. 40536

Corresponding author: Samir Softic, MD, Assistant Professor of Pediatrics, 900 South Limestone, Wethington Rm 527, University of Kentucky, Lexington, KY 40536, Phone: (859) 218-1379; Fax: (859) 257-7799, samir.softic@uky.edu.

AUTHOR CONTRIBUTIONS

S.H.P., R.N.H., T.F., M.H.S., S.F. & S.S. conceptualized the study, performed the research, analyzed the data and wrote the manuscript; J.L.S.W., L.N., H.T. & K.F. performed the experiment in Fig 2. H.P. & J.M.D. analyzed RNAseq data and publically available biorepositories of human studies. J.B., J.R., C.D.K. & B.S. analyzed proteomics data in Fig 4. A.J.L. & C.P. provided and analyzed the data from MHPD study in Fig 7A. B. M.G. & R.N.K. provided data on db/db mice. P.A.K., S.D. & C.R.K. helped guide the study, and assisted with preparation of the manuscript. All authors read and approved the manuscript before the submission.

Publisher's Disclaimer: This is a PDF file of an unedited manuscript that has been accepted for publication. As a service to our customers we are providing this early version of the manuscript. The manuscript will undergo copyediting, typesetting, and review of the resulting proof before it is published in its final form. Please note that during the production process errors may be discovered which could affect the content, and all legal disclaimers that apply to the journal pertain.

¹¹Department of Pediatrics, University of Cincinnati College of Medicine, Division of Immunobiology, Cincinnati Children's Hospital Medical Center, Cincinnati, OH 45229.

¹²Department of Pharmacology and Nutritional Sciences, University of Kentucky College of Medicine, Lexington, KY. 40536

Abstract

Non-alcoholic fatty liver disease (NAFLD) is a liver manifestation of metabolic syndrome, and is estimated to affect one billion individuals worldwide. An increased intake of a high-fat diet (HFD) and sugar-sweetened beverages are risk-factors for NAFLD development, but how their combined intake promotes progression to a more severe form of liver injury is unknown. Here we show that fructose metabolism via ketohexokinase (KHK) C isoform leads to unresolved endoplasmic reticulum (ER) stress when coupled with a HFD intake. Conversely, a liver-specific knockdown of KHK in mice consuming fructose on a HFD is adequate to improve the NAFLD activity score and exert a profound effect on the hepatic transcriptome. Overexpression of KHK-C in cultured hepatocytes is sufficient to induce ER stress in fructose free media. Upregulation of KHK-C is also observed in mice with genetically induced obesity or metabolic dysfunction, whereas KHK knockdown in these mice improves metabolic function. Additionally, in over 100 inbred strains of male or female mice hepatic KHK expression correlates positively with adiposity, insulin resistance, and liver triglycerides. Similarly, in 241 human subjects and their controls, hepatic *Khk* expression is upregulated in early, but not late stages of NAFLD. In summary, we describe a novel role of KHK-C in triggering ER stress, which offers a mechanistic understanding of how the combined intake of fructose and a HFD propagates the development of metabolic complications.

Keywords

Sugar; Fructose; Ketohexokinase; ER stress; NAFLD

INTRODUCTION

There is a worldwide epidemic of obesity, insulin resistance, and metabolic syndrome. Non-alcoholic fatty liver disease (NAFLD) is a liver manifestation of metabolic syndrome and is estimated to affect one billion individuals worldwide (1). In the USA, NAFLD is the most common cause of chronic liver disease in children, affecting the majority of subjects with severe obesity (2) and the second most common cause of liver transplant in adults (3). In both children (4) and adults (5), NAFLD is an independent risk-factor associated with increased mortality. This disease is characterized by excessive lipid accumulation in the liver. While hepatic steatosis is a hallmark of NAFLD, lipid accumulation alone does not differentiate patients at risk of experiencing severe complications. The patients that develop liver inflammation, termed non-alcoholic steatohepatitis (NASH), are thought to be at increased risk, while those with hepatic fibrosis unequivocally have higher odds of experiencing poor outcomes. What factors mediate progression to a severe liver disease versus simple lipid deposition is the subject of active investigation.

Increased intake of dietary sugar, specifically fructose, has been associated with development of severe NAFLD. Adult subjects with NAFLD consume twice as many calories from sugar-sweetened beverages as do the subjects with non-steatotic livers (6). Moreover, increased fructose consumption is positively correlated with the severity of liver fibrosis in adults with NAFLD (7). In children, fructose consumption is an independent risk-factor for NASH (8). This is concerning as adolescents consume more sugar than any other age group. We showed that the first enzyme of fructose metabolism, ketohexokinase (KHK), is increased in liver biopsies in adolescents with NASH, as compared to obese children without fatty liver (9).

The only known function of KHK is to metabolize fructose to fructose-1 phosphate. There are two main KHK isoforms, KHK-A and KHK-C, produced by alternative splicing of a common gene (10). KHK-A is expressed ubiquitously, while KHK-C is found predominantly in the liver, kidney and intestine, and is the primary isoform responsible for fructose metabolism (11). In agreement with its only known function, KHK-C is upregulated by fructose intake. More recently, it has been found that KHK-C is also induced by hypoxia (12), as fructose produced endogenously from glucose can serve as an alternative energy source in an environment that does not support normal glucose metabolism (13).

The detrimental metabolic effects of fructose are thought to be secondary to its high lipogenic potential (14). However, fructose-induced lipogenesis is the highest on a chow diet and decreases on a HFD (9), since diets high in fat provide ample supply of lipids. In spite of strongly inducing lipogenesis on chow diet, metabolic effects of dietary fructose are best observed in the setting of combined intake with a HFD (15). HFD supports development of metabolic complications, in part, via propagation of ER stress. This is an adaptive cellular response aimed at maintaining energy homeostasis and is mediated through three pathways, including activating transcription factor 6 (ATF6), inositol-requiring transmembrane kinase – endoribonuclease 1 activating x-box binding protein 1 (IRE1a-XBP1) and protein kinase RNA-like endoplasmic reticulum kinase (PERK) (16). On the other hand, unresolved ER stress triggers a maladaptive response that supports development of metabolic complications, including a severe form of NAFLD (17).

In this study, we have investigated the combined intake of fructose-sweetened water and a HFD on the development of severe fatty liver disease. We find that fructose-induced KHK-C, via its previously unrecognized role, induces ER stress. When combined with a HFD intake this results in ineffective signal transduction via the PERK arm of ER stress to accelerate the development of glucose dysregulation, liver inflammation and fibrosis. A liver-specific knockdown of KHK is sufficient to reverse metabolic dysregulation in mice consuming fructose on a HFD, but also in mice with genetic causes of obesity or lipodystrophy, on a fructose free diet. The broad effects of KHK knockdown are likely mediated via its reduction of ER stress.

RESULTS

Consumption of fructose on a HFD leads to unresolved ER stress.

A cohort of 10-week-old mice were fed chow or HFD and given *ad libitum* access to regular water or water containing 30%(w/v) fructose for 16 weeks. Mice supplemented with fructose (Fruct) on a chow diet gained more weight ($36.0\pm 1.1\text{g}$) than the mice on a chow diet (Chow) drinking regular water ($32.7\pm 1.3\text{g}$) (Fig S1A). HFD-fed mice drinking regular water (HFD) gained more weight ($46.6\pm 1.1\text{g}$) than both chow-fed controls. However, supplementation with fructose on a HFD (HFD+F) did not result in additional weight gain ($46.9\pm 0.9\text{g}$). In agreement with weight gain, subcutaneous (SQ), visceral adipose tissue (VAT) and brown adipose tissue (BAT) were generally increased in Fruct compared to the Chow group (Fig S1B). HFD-fed mice had even higher increase in adipose tissue mass, while HFD+F-fed mice did not have further increase in adiposity, compared to the HFD group. Similarly, liver weight was increased in mice on HFD ($1.8\pm 0.2\text{g}$) compared to the Chow ($1.2\pm 0.1\text{g}$), but it was not significantly increased by addition of fructose to a HFD ($2.1\pm 0.2\text{g}$). The total caloric intake was increased in mice on all diets compared to the Chow alone, but there was no difference among the hypercaloric diets (Fig S1C). The mice consuming fructose-sweetened water had corresponding decrease in solid food intake on both chow and HFD, since 43% to 24% of their calories came from drinking fructose.

Fructose intake on a HFD accelerates liver injury in murine models of fatty liver disease (18; 19). Serum alanine aminotransferase (ALT), a marker of liver injury, was comparable in mice in Chow and Fruct groups, but was significantly higher ($p<0.01$) in mice on a HFD and addition of fructose to a HFD further elevated ALT ($p<0.0001$) (Fig 1A). Serum triglycerides were not increased by the diets (Fig S1D), while LDL cholesterol was higher in the Fruct group compared to Chow and in both HFD and HFD+F groups. VLDL and HDL cholesterol were not different (Fig S1E). Marked steatosis developed in mice on a HFD and it was exacerbated with addition of fructose, leading to more severe micro and macrovesicular steatosis (Fig 1B). Liver triglycerides were not increased in mice on Fruct, as compared to the Chow group (Fig 1C). HFD-fed mice had higher levels, while addition of fructose did not further raise hepatic triglycerides. This data agrees with our previous findings indicating that lipid composition, rather than total triglyceride accumulation, correlates with progression to a more severe form of fatty liver disease (9).

Three distinct pathways - ATF6, IRE α -XBP1 and PERK mediate endoplasmic reticulum (ER) stress. ER stress has been proposed to drive liver injury and progression to NASH (17). Western blot analysis of liver homogenates revealed that the ATF6 arm of ER stress was not increased by fructose containing diets (Fig 1D). Similarly, IRE1 α was not affected, but downstream spliced XBP1 was increased 2-fold in Fruct group compared to the Chow (Fig 1D, 1E). XBP1s was also increased to a similar level in mice on a HFD, and it was further elevated ~5-fold in HFD+F group. PERK pathway plays an important role to enhance signaling by the IRE1 α to increase Xbp1s (20). Phosphorylated PERK at Thr980 was increased ~3-fold in both Fruct and HFD groups, and it was stepwise 5.2-fold higher in HFD+F group (Fig 1D, 1E). We also assessed pPERK by IHC and it was elevated in the Fruct and HFD groups compared to the Chow, and it was the highest in the HFD+F

group (Fig S1F). Activated PERK propagates ER stress by phosphorylating eukaryotic translation initiation factor 2 α (eIF2 α). Indeed, eIF2 α was phosphorylated at Ser51 in both Fruct and HFD groups, but addition of fructose to a HFD failed to further propagate eIF2 α phosphorylation. Similarly, apoptotic marker, C/EBP homologous protein (CHOP) was increased in Fruct, but was not further significantly elevated in HFD+F group. ER chaperone, binding immunoglobulin protein (BIP) was elevated in Fruct group, but it actually decreased in HFD+F group in spite of upstream elevation in pPERK arm of ER stress consistent with ineffective UPR in this group (Figs 1D, 1E). Phosphorylated eIF2 α upregulates transcription of enzymes participating in protein folding, while at the same time it attenuates protein translation through mRNA degradation (21). Indeed, mRNA levels of protein folding chaperones *Hspa5*, *Edem1* and *Hsp90b1* were increased in Fruct group compared to the Chow, but were not further induced in HFD+F group compared to the HFD (Fig S1G). Similarly, mRNA expression of genes coding ribosomal 60S subunit, such as *Rplp0*, *Rplp1*, *Rplp2* and *Rpl5* that support protein translation, was increased in Fruct, but not in HFD+F group (Fig 1F). Conversely, the expression of genes regulating *de novo* lipogenesis (DNL) including *Acly*, *Acc1*, *Fasn* and *Scd1* were not increased in Fruct group, but their expression was increased in HFD+F (Fig 1G). Interestingly, protein levels of these same DNL enzymes were increased with fructose supplementation of both Chow and HFD (Figs 1H, S1H) suggestive of post-translational protein stabilization. The discrepancy between mRNA and protein levels may indicate that indeed increased phosphorylation of eIF2 α in Fruct group leads to selective mRNA degradation, a known function of phosphorylated eIF2 α (21). There was no mRNA decay of DNL genes in HFD+F group in line with ineffective phosphorylation of eIF2 α in the HFD+F group. In summary, both fructose and HFD induced XBP1s and PERK arms of ER stress, but when these nutrients were consumed together, this led to ineffective UPR leading to unresolved ER stress.

Unresolved ER stress in the HFD+F group prompted us to investigate the time course of dietary effects on ER stress. The three arms of ER stress response were quantified by western blot after two (Fig S2A) and ten (Fig S2B) weeks on the diets. ATF6 arm of the ER stress decreases with increasing time on the diets (Fig S2C). While there was no difference in IRE1 α over time, XBP1s also decreased with longer diet exposures. While, PERK phosphorylation increased over time, its downstream phosphorylation of eIF2 α decreased over time. Thus, all three arms of ER stress response appear to decrease with longer exposure on the diets. Nuclear translocation, rather than cytoplasmic levels is critical in ensuing a normal unfolded protein response. This is particularly true for XBP1s whose nuclear translocation is impaired in the liver of insulin resistant mice (22). Indeed, nuclear XBP1s levels were lower in HFD+F compared to the HFD group after two weeks on the diets (Fig S2D). While nuclear translocation of XBP1s increased with longer exposure on the diets, the HFD+F group still had lower levels than the HFD group even after 16 weeks on the diets (Fig S2E). These data suggest that the combined intake of fructose and HFD impairs UPR rather than the length of time on the diets.

The combined intake of fructose and HFD worsens hepatic insulin resistance, inflammation and fibrosis

ER stress can lead to metabolic dysfunction, so we measured glucose tolerance in our mice after 8 weeks on the diets. Fruct group had normal glucose tolerance, similar to the Chow (Figs S3A, S3B). HFD-fed mice did not develop glucose intolerance at this early time point. However, the combined intake of fructose and a HFD impaired glucose tolerance. Whole body insulin sensitivity was also not impaired in Fruct, as compared to the Chow group, but both HFD-fed groups developed insulin resistance (Figs S3C, S3D). However, when insulin levels were measured over time, insulin increased sooner and rose higher in HFD+F group, compared to the HFD alone (Fig S3E), even though at the end of the experiment serum insulin was not statistically different between the groups.

Glucose tolerance is a product of endogenous glucose production, predominantly made by the liver and glucose utilization by every other tissue. Insulin sensitivity is largely driven by insulin-stimulated glucose uptake in the muscle and adipose tissue. Since these tissues do not metabolize fructose, the difference between GTT and ITT could be explained by hepatic insulin resistance. Next, we assessed hepatic insulin signaling following insulin or saline injection via inferior vena cava 10 minutes before sacrifice. Compared to saline treated mice, AKT S473 phosphorylation was robustly increased in Chow group injected with insulin, documenting normal hepatic insulin signaling (Fig S3F). Fruct and HFD-fed groups had slightly lower p-AKT, whereas HFD+F group showed profound decrease in p-AKT. ERK phosphorylation increased in all four insulin-treated groups, documenting technically adequate insulin injection. The magnitude of ERK phosphorylation was lower in HFD+F group, consistent with decreased AKT phosphorylation. In line with AKT and ERK results, pan-tyrosine phosphorylation of insulin signaling molecules was decreased in Fruct and HFD groups and was the lowest in HFD+F group documenting severe hepatic insulin resistance. To further probe the mechanism of insulin resistance we quantified protein levels of several important mediators of insulin signaling. Insulin receptor (IR) was reduced in HFD and HFD+F groups compared to the Chow (Figs S3G, S3H). This is consistent with hyperinsulinemia in these mice, since insulin is known to downregulate its receptor (23). Interestingly, insulin receptor substrate 1 (IRS-1) tended to be reduced in Fruct group, but it was significantly reduced in HFD+F group, compared to the Chow. A regulatory subunit of phosphatidylinositol 3-kinase, p85 α , was not affected by the diets.

In addition to impaired insulin signaling, ER stress may propagate NAFLD progression by supporting inflammation via c-Jun NH₂-terminal kinase (JNK) pathway. Indeed, fructose supplementation of either Chow or HFD significantly amplified JNK Thr183/Tyr185 phosphorylation (Fig S4A). In agreement with activation of JNK pathway, hepatic mRNA expression of macrophage markers documented increased *Cd11c*, *F4/80*, and *Mip* in HFD+F group (Fig S4B). Moreover, mRNA expression of genes involved in fibrogenesis, such as *Tgf β* , *α Sma*, and *Colla* were significantly increased in HFD+F fed mice, compared to the Chow (Fig S4C). Sirius red stain confirmed increased collagen deposition in HFD+F-fed mice (Fig S4D). These data are in agreement with published studies showing that addition of fructose to a HFD increases liver inflammation and fibrosis (24; 25).

Knockdown of T-KHK in mice on HFD+F-diet improves metabolic dysfunction by decreasing *de novo* lipogenesis and ER stress.

Utilizing liver-specific siRNA made by Alnylam Pharmaceuticals, we knocked down (KD) total KHK (T-KHK) in the livers of male, C57BL/6J mice beginning after 12 weeks of HFD+F feeding. Following 8 weeks of bimonthly siRNA injections, mice were sacrificed after 20 weeks on the diets. Expression of *Khk-c* and *Khk-a* isoforms was elevated in HFD+F-fed mice compared to the Chow (Fig 2A). KD of T-KHK decreased both *Khk-c* and *-a* mRNA better than 95 percent. Whereas both KHK isoforms were decreased, *Khk-c* mRNA is about 30 times more abundant in the liver than *Khk-a* (Fig S5A). Similarly, mRNA expression of enzymes catalyzing the second and third steps of fructose metabolism (Fig S5B) were increased in HFD+F, compared to the Chow group (Fig 2B). T-KHK KD had no effect on the expression of these fructolytic genes, confirming that we specifically knocked down the first step of fructose metabolism. Hepatic fructose metabolism can be upregulated by endogenous fructose produced, via the polyol pathway, from glucose as a substrate (11). Aldose reductase (*Akr1b1*), which converts glucose to sorbitol, and sorbitol dehydrogenase (*Sord*), which converts sorbitol to fructose were unaffected by fructose supplementation or T-KHK KD (Fig 2C).

Body weight in HFD+F group (50.6 ± 1.3 g) was significantly higher than in the Chow group (32.1 ± 1.3 g), and liver-specific T-KHK KD decreased weight gain (46.3 ± 1.4 g) (Fig S5C). Consistent with weight, liver mass was higher in HFD+F group (2.7 ± 0.3 g) than in Chow (1.5 ± 0.1 g), and T-KHK KD lowered liver weight by 20% (2.1 ± 0.2 g) (Fig S5D). Similarly, hepatic triglycerides and cholesterol were reduced following T-KHK KD (Fig 2D). Liver histology was graded by Experimental Pathology Laboratories, Inc., an independent company hired to objectively grade liver histology. NAFLD activity score (NAS) consists of steatosis grade (0–3), inflammation (0–3), and balloon degeneration (0–2) (26). NAS was elevated in HFD+F group and it meaningfully ($p < 0.01$) improved following T-KHK KD (Fig 2E). This improvement was primarily driven by a decline in steatosis grade (Fig S5E), whereas inflammation was unchanged (Fig S5F) and none of the mice had hepatocyte ballooning. Next, we quantified serum markers of metabolic dysfunction. Total cholesterol (Fig 2F), as well as HDL and LDL cholesterol (Fig S5G), were elevated in mice fed a HFD+F diet and they markedly improved ($p < 0.001$) following KD of T-KHK. Serum markers of liver injury, ALT and AST, were also elevated in HFD+F group and they significantly declined in HFD+F/siKHK group (Fig 2G). Other markers of liver function, alkaline phosphatase and total bilirubin, were unaffected by the diets or T-KHK KD (Fig S5H). Basal glucose levels were increased in HFD+F mice and they normalized in HFD+F/siKHK group (Fig S5I). Similarly, glucose tolerance was impaired in HFD+F group, compared to the Chow, whereas T-KHK KD markedly ($p < 0.001$) improved glucose tolerance in HFD+F/siKHK mice (Figs 2H, S5J).

To interrogate the mechanism underlying improved metabolic dysfunction following T-KHK KD, we first assessed the *de novo* lipogenesis pathway. Enzymes mediating DNL, such ACLY, ACC1, FASN and SCD1 (14), were increased 5–10 fold in HFD+F-fed mice compared to the Chow (Figs 2I, S5K). These proteins decreased with T-KHK KD to the levels that were not statistically different from the Chow group. An increase in DNL proteins

correlated with higher T-KHK, which is mainly driven by an increase in KHK-C, rather than KHK-A isoform (Figs 2I, 2J, S5K, S5L). Next, we quantified proteins involved in mediating the two arms of ER stress that were altered by dietary fructose. XBP1s was increased in HFD+F-fed mice compared to the Chow, but KD of T-KHK did not affect XBP1s (Figs 2J, S5L). On the other hand, PERK arm of ER stress was increased in mice on HFD+F diet, and T-KHK siRNA treatment further increased PERK phosphorylation. Similarly, CHOP, a downstream target of activated PERK, was increased in mice on a HFD+F diet, and CHOP significantly increased following a T-KHK KD. These data suggest that both XBP1s and PERK pathways of ER stress are affected by dietary fructose, but only PERK-CHOP pathway was increased by a KD of T-KHK. In summary, liver-specific KD of T-KHK in mice consuming a HFD+F diet was associated with improved hepatic and whole body metabolic dysfunction, which was accompanied by decreased DNL and improved PERK-CHOP arm of ER stress.

Knockdown of T-KHK profoundly alters transcriptional activity in the liver

To comprehensively investigate metabolic pathways affected by T-KHK KD we performed RNAseq analysis. Principal component analysis showed that liver transcriptome of a HFD+F group was substantially different from that of the Chow group (Fig 3A). Interestingly, KD of T-KHK segregated from the other groups in the PCA plot, illustrating its transformation of the liver transcriptome (Fig 3A). This is an interesting finding since the only known function of KHK is to phosphorylate fructose. Next, we identified the most significantly altered pathways from this analysis. Consistent with a well-known function of ER stress to halt transcriptional activity, the most significantly upregulated pathway was transcriptional regulation by E2F transcription factor 6 (E2F-6) (Fig 3B). The protein encoded by E2F-6 gene contains a modular suppression domain that functions to inhibit transcription (27). Additionally, ChIP-seq from the ENCODE Transcription Factor Targets dataset identified eIF2 α as a target gene of E2F-6. Other significantly altered pathways included nuclear estrogen signaling (Estrogen Dependent Nuclear Events pathway and Extra Nuclear Estrogen Signaling pathway), as well as nucleotide recycling (Nucleotide Salvage pathway, Metabolism of Nucleotides pathway, Nucleobase Catabolism pathway and Pyrimidine Catabolism pathway). Nucleotide salvage pathways recycle nucleotides formed during degradation of RNA and DNA. Again, this is likely a consequence of increased ER stress as it promotes mRNA degradation to decrease transcription. In congruence, seven out of the ten most significantly altered pathways are involved in regulation of transcription.

Volcano plot analysis comparing HFD+F versus HFD+F/siKHK groups showed that indeed one of the most significantly downregulated genes with T-KHK KD is KHK, but also maternally expressed gene 3 (*Meg3*), RNA imprinted and accumulated in nucleus (*Rian*), and miRNA containing gene (*Mirg*) (Fig 3C). *Meg3*, *Rian* and *Mirg* are closely linked maternally expressed non-coding RNAs that function as an integral part of genome-wide regulatory network and have been implicated in ER stress (28; 29). On the other hand, some of the most significantly upregulated genes with T-KHK KD are RNA binding protein, zinc finger protein 871 (*Zfp871*), ligand dependent nuclear receptor corepressor (*Lcor*) and hepatocyte growth factor (*Hgf*), as well as many long non-coding RNAs such as *Gm45883*, *Gm2810*, *Gm12918* and *Gm15801* (Fig 3C). Narrowing down on the ER stress response,

downregulated genes with T-KHK KD include *Xbp1* and *Ern1* (aka *Ire1a*), as well as heat shock proteins *Hspd1* and *Hspa2* (Fig 3D). Upregulated genes with T-KHK KD include DNA damage inducible transcript 3 (*Ddit3*), also known as *Chop*, its target, activating transcription factor 5 (*Atf5*) and nuclear protein 1 (*Nupr1*) required for eIF2 α mediated resolution of ER stress, as well as ribosomal subunits *Rplp0* and *Rpl5*. In figure 1E we showed that upregulation of these ribosomal subunits was impaired in HFD+F-fed mice, so we verified this part of RNAseq analysis via qPCR. Consistent with our previous results, mRNA expression of *Rplp0*, *Rplp1*, *Rplp2*, *Rpl5* and *Rpl22* was not increased in HFD+F-fed mice compared to the Chow, but they were increased following T-KHK KD (Fig 3E). We also quantified DNL pathway by qPCR and it was increased in HFD+F, but not in mice treated with KHK siRNA (Fig 3F).

Heatmap analysis again showed that the most significantly upregulated genes in HFD+F-fed mice were non-coding RNAs *Mirg*, *Rian* and *Meg3*, whereas the most significantly increased genes in HFD+F/siKHK group were genes regulating transcription (*Zfp871*, *Lcor*) and long non-coding RNAs (Fig S6A). Lipogenesis pathway was also affected by T-KHK KD, so that the genes regulating fatty acid synthesis pathway such as *Mlxpl* (aka *Chrebp*), *Pklr*, *Scd1* and *Acaca* (aka *Acc1*) were downregulated, whereas genes regulating triglyceride assembly such as *Agpat1,2*, *Gpat3* and *Cidec* were upregulated with T-KHK KD (Fig S6B). In summary, KD of T-KHK had a large and unanticipated effect on global hepatic transcriptional activity, and more specifically on DNL and ER stress pathways.

Overexpression of KHK-C is sufficient to upregulate ER stress in vitro

In light of the profound effect of T-KHK KD on ER stress and thus hepatic transcriptome, we overexpressed (OE) GFP tagged (27 kDa) mouse KHK-C in human HepG2 cells cultured in standard (DMEM), fructose-free media. We (15; 30) and others (31) have previously published that HepG2 cells do not express KHK-C. KHK-C in HepG2 cells was overexpressed to the level similar to HFD+F-fed mice (Fig 4A). Remarkably, OE of KHK-C was sufficient to increase *Ddit3* and ER chaperones *Hspa5*, *Edem1* and *Hsp90b1* (Fig 4B). Furthermore, ribosomal subunits *Rplp1*, *Rplp2*, *Rpl5* and *Rpl22* were also increased simply by KHK-C OE (Fig 4C).

Next, we quantified ER stress pathway in WT and KHK-C OE HepG2 cells by western blot. The cells were treated with or without chloroquine (CQ), to prevent autophagosome-lysosome fusion, and were serum starved (SS), to further induce ER stress (Fig 4D). In WT cells, CQ treatment profoundly decreased XBP1s, confirming a link between autophagy and ER stress. Serum starvation had no effect on XBP1s in WT cells. Remarkably, OE of KHK-C increased XBP1s protein, and again, CQ decreased it, while SS had no effect. PERK phosphorylation at Thr980 was not profoundly affected by CQ or SS in WT cells. OE of KHK-C increased p-PERK compared to WT cells. CQ treatment further increased it, whereas SS, adding a second form of ER stress, increased PERK phosphorylation. Downstream eIF2 α phosphorylation was increased by CQ or SS exposure in WT cells. KHK-C OE showed increased p-eIF2 α compared to WT and it was further increased by CQ treatment. SS also increased p-eIF2 α , but to a lesser extent than CQ exposure. We could not detect CHOP in this cancer cell line, so we quantified BIP protein. CQ treatment decreased,

while SS increased BIP levels in WT cells. KHK-C OE cells had markedly elevated BIP in line with increased ER stress in these cells. Remarkably, adding a second form of ER stress in terms of SS actually decreased BIP, similar to when fructose was added to a HFD (Fig 1D). KHK-C OE HepG2 cells were cultured in fructose free media, but to ensure that KHK-C can induce ER stress independent of fructose metabolism we also OE mutant kinase dead KHK-C (KHK-C MD). Mutant kinase dead KHK-C was generated by point mutation (G527R) in ATP binding domain so that the enzyme can bind, but cannot phosphorylate fructose. Compared to GFP OE cells, OE of either WT or MD KHK-C increased PERK phosphorylation indicative of elevated ER stress (Fig S7A).

ER stress regulates autophagy (32), an intracellular degradation pathway for recycling improperly folded proteins (33). Autophagy initiation is mediated by the unc-51 like autophagy activating kinase 1 (ULK1) and is inhibited by mammalian target of rapamycin (mTOR). ULK1 was decreased, while phosphorylation of mTOR at S2448 was increased in KHK-C OE cells (Fig 4E), consistent with decreased autophagy. LC3 mediates the final step of autophagosome fusion with lysosome and consists of native LC3-I, and lipidated LC3-II, active form. CQ blocks autophagy flux enabling steady state inference. In CQ treated WT cells, the ratio of LC3 II/I was increased with SS indicative of increased autophagy. On the other hand, LC3 II/I ratio was decreased in CQ and CQ+SS treated KHK-C OE cells consistent with decreased autophagy flux. This is primarily evident by increased inactive LC3-I in KHK-C OE cells. We also calculated LC3-II degradation and synthesis ratio in by comparing CQ and CM treated cells (34). LC3-II degradation ration was lower in KHK-C OE cells (1.83) compared to WT cells (2.47), while there was no difference in LC3-II synthesis ratio between the groups. Taken together, these data indicate that increased ER stress in KHK-C OE hepatocytes leads to decreased autophagy flux, a well-known role of unfolded protein response.

Next, we asked if decreased autophagy flux is accompanied with increased ER-associated degradation of unique proteins mediating insulin signaling. WT and KHK-C OE HepG2 cells were treated with Cycloheximide (Chx) to prevent protein synthesis and treated with fructose (F) or CM for 4 or 8 hours. IRS-1 was rapidly degraded in WT cells treated with fructose and its degradation was enhanced in KHK-C OE cells (Fig S7B), in agreement with decreased IRS-1 with fructose treatment *in vivo* (Fig S3G). AKT and ERK proteins were minimally decreased after 8 hours of Chx treatment, likely due to their longer half-life, but this decrease was stronger in F-treated KHK-C OE cells. On the other hand, p85 α node of insulin signaling was unaffected by Chx treatment similar to no change in p85 α protein *in vivo* (Fig S3G). We also asked if PERK arm of ER stress can be degraded by KHK-C OE in HepG2 cells. Again PERK, p-eIF2 α and BIP were higher in KHK-C OE cells compared to WT (Fig S7C). Total PERK levels were lower in F- compared to CM-treated cells after 4h of Chx treatment in KHK-C OE, but not WT cells (Fig S7C). However, p-eIF2 α and BIP were not different in F-, compared to CM-treated cells. In summary, KHK-C OE leads to increased ER stress and ineffective PERK phosphorylation when exposed to additional cellular stress.

To comprehensively evaluate OE of KHK-C in a different cell type, we performed proteomic analysis in AML-12 mouse hepatocytes cultured in fructose-free media using

data-independent acquisitions (35; 36) on an Orbitrap Eclipse Tribrid platform. We identified and quantified 4,252 unique proteins. Only the proteins with two or more unique peptides were quantified in order to increase specificity. Four hundred and four proteins were significantly altered comparing KHK-C OE vs WT cells (q-value <0.01 and $\log_2(\text{fold change}) > 0.58$). Of these 58.9% were downregulated and 41.1% were upregulated. ConsensusPathDB functional annotation analysis revealed only three upregulated pathways, and the most significant one was ER dependent Regulation of Protein Complex Assembly (Fig 4F). The top ten downregulated pathways included processes involved in acyl-CoA, cholesterol, and lipid metabolism, consistent with metabolic dysfunction observed in the setting of ER stress (Fig 4F).

Knockdown of T-KHK in ob/ob mice improves metabolic dysfunction and ER stress, but not DNL

In the figures above, we have described a novel function of KHK-C in ER stress. Next, we tested whether T-KHK KD has an effect in mice with genetically induced obesity and ER stress, independent of dietary fructose intake. Two-month-old, chow-fed, leptin-deficient (ob/ob) mice were treated with T-KHK or luciferase control siRNA for four weeks. Weight gain in ob/ob mice was significantly greater ($12.5 \pm 0.8\text{g}$) than in heterozygote (ob/+ Het) control mice ($4.6 \pm 0.8\text{g}$) (Fig 5A). T-KHK KD significantly ($p < 0.01$) reduced weight gain in ob/ob-siKHK ($9.1 \pm 0.9\text{g}$), compared to the ob/ob-siCont group. Reduced weight gain is reflected, in part, by 20% reduction in liver weight in ob/ob-siKHK group ($4.0 \pm 0.1\text{g}$), compared to ob/ob-siCont ($3.4 \pm 0.2\text{g}$) (Fig 5B). This is accompanied by a trend ($p = 0.08$) toward reduced hepatic triglycerides, whereas hepatic cholesterol was significantly ($p < 0.01$) lower in ob/ob-siKHK group (Fig 5C). Furthermore, perigonadal VAT (Fig S8A) was lower, while kidney weight (Fig S8B) was unchanged between ob/ob-siKHK and ob/ob-siCont groups.

Next, we assessed metabolic dysfunction in these mice. Glucose tolerance was impaired in ob/ob mice compared to the heterozygote controls (Figs 5D, S8C), and T-KHK KD significantly ($p < 0.01$) improved glucose tolerance. Similarly, both ob/ob-siKHK and ob/ob-siCont mice had impaired insulin sensitivity, and T-KHK KD tended to improve insulin sensitivity (Figs 5E, S8D). Serum cholesterol was elevated in ob/ob mice and it significantly ($p < 0.01$) improved with T-KHK KD (Fig 5F). Serum ALT was also elevated in ob/ob mice, but it was unchanged after four weeks of siKHK treatment (Fig 5G). An improvement in metabolic dysfunction in ob/ob mice on fructose free diet prompted us to quantify the polyol pathway of endogenous fructose production. *Akr1b1* expression was unaffected in ob/ob mice and it did not change with T-KHK KD (Fig 5H). However, *Sord* was increased in ob/ob mice compared to controls, but it was not affected by T-KHK KD. In agreement with higher *Sord*, urinary fructose excretion was elevated in ob/ob mice (Fig 5I), consistent with increased endogenous fructose production and it was unaffected by T-KHK KD. Ob/ob mice were polyuric, due to glucosuria and produced dilute urine with low urine creatinine (Fig S8E). Urinary fructose corrected by urine creatinine was also elevated on ob/ob mice and it was unaffected by T-KHK KD (Fig S8F).

An increase in *Sord* and urinary fructose correlated with increased hepatic T-KHK (Figs 5J, S8G) and KHK-C (Figs 5K, S8H) in ob/ob mice on a fructose-free diet and a KD of T-KHK induced a complete loss of KHK in the liver. However, protein levels of KHK-C have not been significantly decreased in intestine or kidney following treatment with KHK siRNA (Fig S8I) consistent with liver specific KD. Next, we assessed DNL and ER stress pathways. Proteins mediating DNL, such as ACLY, ACC1, FASN and SCD1 were ~2 to 4-fold higher in ob/ob mice, compared to the controls (Figs 5J, S8G). Except for ACLY, KD of T-KHK had no effect on these DNL proteins. XBP1s was increased about 5-fold in ob/ob mice (Figs 5K, S8H), in line with increased ER stress in these mice (37). However, T-KHK KD did not alter XBP1s protein (Figs 5K, S8H). On the other hand, PERK Thr980 phosphorylation was markedly ($p < 0.0001$) increase following T-KHK KD in ob/ob mice. Along with increased p-PERK, CHOP was 5-fold higher in ob/ob-siKHK, compared to the ob/ob-siCont group. In summary, KHK-C was increased in ob/ob mice likely due to increased endogenous fructose production. A KD of T-KHK in ob/ob mice resulted in metabolic improvements, which was associated with an improvement in p-PERK arm of ER stress, but not in DNL pathway.

Knockdown of T-KHK in lipodystrophic mice improves metabolic dysfunction and ER stress, but not DNL

Following the exciting results in genetically obese ob/ob mice, we also confirmed increased KHK-C expression in livers of genetically obese leptin-receptor deficient db/db mice (Fig S9A). Over time db/db, but not ob/ob, mice develop progressively more severe liver injury and we observed stepwise increased KHK-C in early, but not late stages of NAFLD. Rather than studying another model of genetic obesity, next we asked if T-KHK KD has a role in lean mice with metabolic dysfunction. We previously created a model of lipodystrophy by knocking out IR specifically in fat tissue (FIRKO). These mice completely lack visceral adipose tissue, but develop severe diabetes (38) and advanced NAFLD (39) since the liver becomes a primary site of fat storage. Two-month-old, chow-fed, FIRKO (IR flox/flox, cre+) and littermate control (IR flox/flox, cre-) mice were injected with T-KHK or luciferase control siRNA for four weeks. Lipodystrophic FIRKO mice gained similar amount of weight as littermate controls over four weeks, but a KD of T-KHK in FIRKO mice resulted in lower weight gain (Fig 6A). Most of the difference in weight can be attributed to a 25% reduced liver weight (4.0 ± 0.2 g) in FIRKO-siKHK (Fig 6B), compared to FIRKO-siCont mice (5.3 ± 0.3 g). Furthermore, FIRKO-siKHK group had lower hepatic TG and cholesterol, compared to FIRKO-siCont (Fig 6C). Random fed blood glucose was higher in FIRKO mice than in littermate controls and it markedly ($p < 0.001$) improved following T-KHK KD (Fig 6D). Similarly, glucose tolerance was impaired in fasted FIRKO mice, which improved with T-KHK KD (Figs 6E, 6F). Serum TG (Fig 6G) and AST (Fig 6H) were elevated in FIRKO mice and decreased with T-KHK KD. Serum FFA and ALT were also elevated in FIRKO mice, but did not significantly improve with KD of T-KHK (Fig S9B). The polyol pathway in the liver was elevated in FIRKO mice, exemplified by increased *Akr1b1* and *Sord*, whereas T-KHK KD had no effect on these genes (Fig 6I).

Despite consuming a fructose-free diet, T-KHK (Figs 6J, S9C) and KHK-C (Fig 6K, S9D) were markedly elevated in FIRKO mice compared to the littermate controls, whereas T-KHK KD induced a complete loss of KHK. Proteins involved in DNL, such as ACLY,

ACC1, FASN and SCD1 were ~2 to 5-fold higher in FIRKO mice, but KD of T-KHK actually increased these proteins in the liver (Figs 6J, S9C). XBP1s was ~3-fold higher in FIRKO mice compared to the control, but KD of T-KHK did not alter XBP1s (Figs 6K, S9D). On the other hand, PERK phosphorylation at Thr980 was 3-fold higher in FIRKO mice following T-KHK KD. In agreement with elevated p-PERK, CHOP was significantly ($p < 0.05$) higher in FIRKO-siKHK, than in FIRKO-siCont group. In summary, KD of T-KHK in lipodystrophic FIRKO mice led to metabolic improvements, which was associated with an improvement in p-PERK arm of ER stress, but not in DNL pathway.

KHK expression correlates with obesity and metabolic dysfunction in mice and early stages of NAFLD in humans

Due to an unexpected increase in KHK in the livers of mice with genetically induced obesity or metabolic dysfunction we asked if T-KHK expression correlates with these metabolic traits in Hybrid Mouse Diversity Panel (HMDP) (40). In this study, conducted by Dr. Lusis group more than 100 inbred strains of male or female mice were fed Western diet to induce various degrees of atherosclerosis and NAFLD (40). Hepatic microarray was performed and we correlated T-KHK expression with metabolic traits. T-KHK mRNA positively correlated with adiposity ($R^2 = 0.292$), serum insulin ($R^2 = 0.261$), HOMA-IR ($R^2 = 0.267$) and hepatic triglycerides ($R^2 = 0.176$) in male mice (Fig 7A). Similarly, in female mice, T-KHK expression increased with increasing adiposity ($R^2 = 0.202$), serum insulin ($R^2 = 0.233$), HOMA-IR ($R^2 = 0.243$) and hepatic triglycerides ($R^2 = 0.216$) (Fig S10A). Next, we assess PERK arm of ER stress and found that *Eif2aka3* ($R^2 = 0.162$), *Ddit3* ($R^2 = 0.305$) as well as ER chaperons *Hspa5* ($R^2 = 0.198$) and *Hsp90b1* ($R^2 = 0.231$) correlated negatively with hepatic T-*Khk* expression in male mice (Fig S10B). This relationship was even stronger in female mice where *Eif2aka3* ($R^2 = 0.302$), *Ddit3* ($R^2 = 0.349$), *Hspa5* ($R^2 = 0.191$) and *Hsp90b1* ($R^2 = 0.138$) significantly ($5.5e-22$ for *Ddit3*) decreased with increasing T-*Khk* expression (Fig 7B). These results are in agreement with the data in Fig 1E showing that *Ddit3*, *Hspa5* and *Hsp90b1* were lower in HFD+F, compared to the Fruct group.

Since T-KHK expression correlated positively with NAFLD risk-factors in a large number of mice, next we asked if KHK expression correlates with NAFLD in human studies. Our bioinformatics group analyzed publicly available datasets from clinical studies involving patients with NAFLD. In a study by Lopez-Vicario et al. (41), T-*Khk* expression was increased in eight patients with morbid obesity and NASH compared to the controls (three cadaveric liver donors and four resection of metastasis to the liver) (Fig 7C). In a study by Arendt et al. (42), T-*Khk* mRNA was stepwise higher in 20 patients with steatosis and in 19 NASH patients, compared to 24 healthy controls (Fig 7D). In a study performed at Joslin Diabetes Center (43), hepatic *Khk* expression increased in patients with obesity and type 2 diabetes, such that the obese patients with type 2 diabetes and poor glycemic control had the highest T-*Khk* expression (Fig 7E). On the other hand, T-*Khk* expression was not further elevated in patients with advanced and fibrotic NAFLD. In a study that had more rigorous phenotyping of NAFLD (44), where the patients were divided into four groups, T-*Khk* expression was stepwise higher starting with 14 healthy controls (NAS 0), 27 obese subjects (NAS 0), and 14 patients with steatosis (NAS 1–3), but not in 18 patients with advanced NASH (NAS 5–6) (Fig S10C). In agreement with this study, a study

comparing 40 obese patients with mild NAFLD (fibrosis stage 0–1, 25% NAS 5) to 32 BMI matched patients with advanced NAFLD (fibrosis stage 3–4, 56% NAS 5), T-*Khk* expression actually decreased in the latter group (45) (Fig S10D). Consistent with decreased T-*Khk* expression in patients with advanced NAFLD, the patients with cirrhosis and/or hepatocellular carcinoma (HCC) secondary to chronic hepatitis C infection (46) had lower T-*Khk* expression than the patients with non-complicated chronic Hep C infection (Fig 7F).

In summary, *Khk* expression correlated positively with NAFLD risk-factors in over 100 inbred strains of male and female mice. Furthermore, in 241 patients with NAFLD and their controls, *Khk* expression was positively associated with obesity, metabolic dysfunction and early stages of NAFLD. However, KHK is not a marker of liver injury, as it decreased in patients with advanced NAFLD and in patients with severe liver disease secondary to hepatitis C infection.

DISCUSSION

In the present study, we have explored the effects of a combined intake of sugar and a HFD on the development of severe NAFLD. We show that both nutrients can induce ER stress, whereas their combined intake results in unresolved ER stress accompanied by severe glucose intolerance, liver inflammation and hepatic fibrosis. Knockdown of T-KHK in mice consuming fructose on a HFD results in improved metabolic dysfunction via decreasing DNL and ER stress pathways. RNAseq analysis confirmed broad effects of T-KHK KD on ER stress and the hepatic transcriptome, far beyond what could be expected from its only known function to phosphorylate the simple sugar fructose. In line with its newly uncovered role, overexpression of KHK-C *in vitro* is sufficient to induce ER stress and impair autophagy. Increased KHK is observed in mice with genetically induced obesity or metabolic dysfunction consuming a fructose-free diet due to elevated endogenous fructose production. A knockdown of T-KHK in these mice improves metabolic dysfunction and restores the PERK arm of ER stress, without decreasing lipogenic enzymes. Consistent with its role in ER stress, hepatic *Khk* expression correlates positively with adiposity, serum insulin, HOMA-IR and hepatic triglycerides in over 100 inbred strains of male or female mice. Similarly, in 241 human subjects with NAFLD and their controls, *Khk* expression was upregulated in subjects with obesity, poor glucose control and early, but not late stages of NAFLD. While the main features of fructose are thought to be secondary to its lipogenic potential, here we describe a new role of fructose-induced KHK-C on ER stress that offers an explanation of how the combined intake of sugar and a HFD accelerates the development of NAFLD and metabolic complications.

Our work illustrates that consumption of both fructose and a HFD can upregulate XBP1s and PERK arms of ER stress. However, their combined intake leads to inadequate UPR, resulting in unresolved ER stress. On the contrary, successful resolution of ER stress increases the expression of ribosomal subunits and expands ER protein folding capacity (47). Our RNAseq analysis revealed that a knockdown of T-KHK alters the ER stress pathway. In cultured hepatocytes, ER stress can simply be triggered by overexpression of KHK-C. Indeed, our proteomic analysis revealed that ER mediated Regulation of Protein Complex Assembly is the most significantly upregulated pathway in KHK-C OE cells.

While an increase in KHK-C is sufficient to upregulate ER stress, adding a second form of ER stress in terms of the combined HFD and fructose intake or serum starvation of KHK-C OE cells actually reduces BIP, a chaperone mediating resolution of ER stress. This suggests a non-linear, dose-dependent nature of ER stress, where a single dose of ER stress triggers a beneficial compensatory mechanism, whereas adding a second source of stress leads to unresolved ER strain and cellular injury. Indeed, unresolved ER stress is associated with a higher severity of NAFLD (48).

A novel role of KHK-C in mediating ER stress has not been previously described, but it is not completely unexpected. Fructose has been reported to induce ER stress (49) and conditions that induce *Khk-c* expression, namely hypoxia (12) and impaired glucose metabolism (13), are well-known triggers of ER stress. Here, we propose that dietary fructose serves as a physiologic stimulus to increase KHK-C and that elevated KHK-C then mediates ER stress leading to metabolic dysfunction. We show this to be the case for hepatic insulin resistance and steatosis. The combined intake of fructose and HFD leads to hepatic insulin resistance *in vivo* associated with a decrease in IRS-1 (50). A decrease in IRS-1 can also be triggered *in vitro* by KHK-C induced perturbation in autophagy flux. Conversely, hyperinsulinemia equally downregulates IR in both HFD and HFD+F groups (51). How KHK-C triggers ER stress is an area of future research. One hypothesis is that KHK-C drives post-translational protein modifications such as acetylation (52), leading to protein misfolding and ER stress.

Our data suggest that signal transduction via the PERK arm of ER stress is sensitive to a degree of cellular stress. Impaired phosphorylation of translation initiation factor eIF2 α is observed *in vivo* by the combined intake of fructose and HFD, as well as *in vitro* by dual OE of KHK-C and serum starvation. Phosphorylated eIF2 attenuates translation initiation and accelerates mRNA degradation (21). These effects are in agreement with our RNAseq analysis showing a profound impact of KHK KD on transcriptional regulation and nucleotide salvage pathways. Moreover, adequate eIF2 α phosphorylation has been documented to protect hepatocytes from oxidative stresses induced by fructose metabolism (53). Mice with hepatocyte specific mutation in eIF2 α , encoding phosphorylation S51A deficient protein, develop a more severe fatty liver disease when fed a high-fructose diet (53). Mechanistically, phosphorylated sugars have been proposed to occupy the catalytic site in the eIF2B α subunit to modulate eIF2 α phosphorylation (54). While eIF2 α phosphorylation protects from nutrient-induced ER (55) and oxidative stress (56; 57), paradoxically, it can also induce cell death via strong and persistent induction of CHOP (58).

CHOP is universally recognized to mediate ER stress-induced apoptosis (59). What effect this plays in the setting of fatty liver disease is a matter of controversy. Some reports suggest that CHOP induction propagates liver inflammation, fibrosis, and oncogenesis (60; 61), while others document its protective role. First, CHOP is not increased in humans with NAFLD and NASH, in spite of increased eIF2 α phosphorylation (62). Next, mice with CHOP deficiency develop more severe NAFLD with increased ER stress and hepatocyte apoptosis when fed a high fat, fructose and cholesterol diet (63). Additionally, an increase in CHOP is required to protect mice from another diet-induced liver injury, the methionine/

choline deficient model (64). In our study, PERK/CHOP pathway is impaired by combined intake of HFD+F diet and by dual KHK-C OE and serum starvation, while a knockdown of KHK upregulates PERK/CHOP pathway. In our study, an increase in CHOP following KHK KD is consistently associated with improved fatty liver disease. This is a more constant relationship than the improvement in lipogenesis induced by KHK KD. In fact, lipogenic enzymes are only decreased following T-KHK KD in mice consuming a large amount of fructose on a HFD. However, T-KHK KD does not reduce lipogenic enzymes in ob/ob or FIRKO mice on a fructose-free diet. This suggests that preventing fructose metabolism via a KD of T-KHK is required to downregulate DNL enzymes. On the other hand, KD of KHK improves metabolic derangements in ob/ob and FIRKO mice by mediating ER stress without decreasing DNL enzymes. Further, hepatic cholesterol is improved in all models following T-KHK KD, in line with ER playing an integral part in cholesterol synthesis (65).

Consistent with unresolved ER stress, a combined intake of fructose and a HFD leads to the development of liver injury characterized by increased serum ALT, inflammation and hepatic fibrosis. A recent systemic review of 3,920 rodent models of NAFLD found that a high-fat, high-fructose diet indeed most closely resembles the severe liver injury observed in patients with NAFLD (19). Previously, we (24) and others (66–68) have showed that addition of sugar to a HFD propagates development of NAFLD more than the HFD alone. This may be secondary to increased lipogenesis, triggered by fructose metabolism and upregulation of KHK-C, which propagates ER stress-induced liver injury. Indeed, hepatic *Khk* expression correlates positively with markers of metabolic dysfunction in over 100 inbred strains of male or female mice. Moreover, hepatic *Khk* expression in these mice fed a Western diet is associated with decreased expression of PERK arm of ER stress and ER chaperones needed to resolve ER stress. Thus, KHK expression initially correlates with DNL and ER stress but with combined insult, UPR response actually decreases. Non-linear, dose-dependent relationship between KHK and metabolic dysfunction is also observed in human livers. *Khk* expression is increased in early stages of NAFLD in 241 subjects with fatty liver disease and their controls. However, *Khk* expression did not correlate with more severe forms of liver injury. It appears that once liver injury sets in, ongoing upregulation of KHK is not necessary for continued liver damage. This is evident by persistently elevated XBP1s, which is not altered with a KD of T-KHK. Another possibility is that once patients develop severe liver disease their food intake decreases, which may translate into decreased KHK expression. However, in db/db mice hepatic KHK is initially elevated but then stabilizes, despite increasing severity of liver injury and ongoing obesity.

Here, we provide strong evidence that *Khk* expression correlates with multiple NAFLD risk-factors in mice and offer a mechanistic explanation underlying this interaction. Additionally, we provide, to date, the largest collection of data on *Khk* expression in human subjects with NAFLD. Prior studies have documented resolution of NAFLD in mice with genetic knockout of KHK (67; 69; 70). This provides a strong rationale for targeting KHK for treatment of NAFLD. Several KHK inhibitors have already been developed (71–74), but this study points to additional questions that remain to be answered. Since KHK is upregulated in early stages of NAFLD, the efficacy of KHK inhibitors in models of advanced NAFLD needs to be determined. Long-term consequences of elevated CHOP in regards to liver carcinogenesis are unknown. Lastly, a profound effect of KHK KD on hepatic transcriptome

calls for a more careful study of the potential side effects. A limitation of this study is that we investigated the effects of fructose in the liver, without fully assessing kidney and intestine physiology. However, tissue-specific fructose metabolism exerts distinctive roles where intestinal fructose metabolism controls sugar intake and hepatic fructose metabolism mediates the development of metabolic syndrome (75).

In conclusion, consumption of a simple sugar, fructose, on a HFD accelerates development of metabolic complications and liver injury. While the role of fructose in supporting lipogenesis is well described, we report a novel function of fructose-induced KHK-C in ER stress. This new role of KHK-C has a far-reaching impact as it profoundly affects global hepatic gene expression. Future studies are needed to broaden our understanding of this not so simple sugar metabolism.

METHODS

Animals and Diets

In accordance with NIH guidelines all animal protocols were approved by the IACUC of the University of Kentucky, Joslin Diabetes Center and Alnylam pharmaceuticals, where different experiments were performed. At Joslin Diabetes Center mice were housed at 20–22 °C on a 12 h light/dark cycle with *ad libitum* access to food and water. C57BL/6J male mice at 10 weeks of age were purchased from Jackson Laboratory and fed either chow diet (Labdiet, Mouse Diet 9F) or high fat diet (Research diets, D12492) for 16 weeks. Caloric composition of the chow diet consisted of 23% protein, 21.6% fat and 55.4% carbohydrates, while the HFD had 20% protein, 60% fat and 20% carbohydrates. Mice were provided either tap water or 30% (weight/volume) fructose in water. The animals were weighed, and their food intake was recorded once per week. GTT and ITT were performed after 8 weeks on the diets. PTT was performed at 10 weeks on the diets. Mice were sacrificed from 8 to 11 am, and one mouse from each cage, i.e. dietary group, was utilized before sacrificing the next mouse in the same cage. This was repeated until all four mice per cage were sacrificed. Male FIRKO mice were bred at Joslin Diabetes Center as previously described (39). At 2 months of age FIRKO mice (IR flox/flox, Adiponectin Cre +) were injected with KHK or luciferase (luciferase is not expressed in the mouse) control siRNA every two weeks for 4 weeks in total. Littermate IR flox/flox, Adiponectin Cre negative male mice were used as controls. Db/db mice were housed at Joslin Diabetes center and cared for by the lab members in Rohit Kulkarni lab. Db/db male mice were purchased from Jackson Laboratory at two months of age and they were fed chow diet for 4, 8 or 14 weeks to induce progressively more severe NAFLD. At Alnylam Pharmaceuticals, C57BL/6J male mice at 8–10 weeks of age were purchased from Charles River and fed either chow diet (Picolab[®] Rodent Diet 20 [5053] by LabDiet) or high fat diet (Research diets, D12492) supplemented with 30% fructose for 12 weeks. HFD+F mice were injected with KHK siRNA or PBS every two weeks for 8 weeks. The mice were sacrificed after 20 weeks on the diets. Ob/ob male mice were purchased from Jackson Laboratory at two months of age and provided regular chow diet (LabDiet 9F 5020, Cat# 0001329) at the University of Kentucky. This diet contains 0.98% sucrose. The mice were injected with KHK or luciferase control siRNA every two weeks for 4 weeks.

Glucose, pyruvate and insulin tolerance test

For glucose tolerance test (GTT), mice were fasted overnight and injected intraperitoneally (IP) with 2g glucose per kg of body mass. Blood glucose levels were measured at 0, 15, 30, 60, and 120 minutes using a glucose meter (Infinity, US Diagnostics). Pyruvate tolerance test (GTT), was performed on overnight fasted mice and IP injected with 2g of pyruvate per kg of body mass. Insulin tolerance tests (ITT) were performed in nonfasted mice by i.p. injection of 1 mU insulin per kg of body mass. Blood glucose levels were measured at indicated times.

Liver-specific KHK knockdown

Liver-specific knockdown was achieved by utilizing an siRNA conjugated to N-acetylgalactosamine (GalNAc). Alnylam Pharmaceuticals synthesized siRNA to specifically target mouse total Khk mRNA. The siRNA consists of 2 strands, guide and passenger. The guide strand carries the sequence information necessary for target-gene recognition, while the passenger strand supports loading into the RNA-induced silencing complex (RISC). siRNA has undergone chemical modifications to achieve long-lasting effect and specificity for hepatocytes. The combination of the 2'-fluoro, 2'-O-methyl and phosphorothioate modifications provides protection against exonuclease degradation, allowing for marked compound stabilization. The guide strand is conjugated to a trivalent GalNAc specifically recognized by the asialoglycoprotein receptor (ASGPR), which is highly expressed on the surface of hepatocytes, achieving hepatocyte-specific delivery and uptake. PBS (Figs 2&3) or a GalNAc conjugate siRNA targeting luciferase was used as a negative control (Figs 5&6). Mice were injected subcutaneously with 20 mg/kg of KHK, 10 mg/kg luciferase control siRNA or PBS every two weeks depending on experimental design.

Liver Histology, Sirius red and NAS scoring

Histology sections were prepared from formalin fixed paraffin embedded liver sections. H&E staining and Sirius red staining were performed by the University of Kentucky Pathology Research Core. Alnylam Pharmaceuticals Inc. completed in-house H&E staining on liver tissue from the experiment performed at their institution. Liver histology was graded by Experimental Pathology Laboratories, Inc. (EPL) to assign NALFD activity score. Our collaborators at Alnylam hired EPL to perform this work in an unbiased fashion on a fee-for-service basis.

Assays quantifying serum and liver metabolic dysfunction

Serum samples were used for the quantification of triglyceride (Pointer scientific, T7532–1L) and cholesterol (Catachem, C104–01) following manufacturer's guidelines. Plasma insulin level was quantified using ELISA kit (Crystal chem, 90080). ALT and AST level in the were measured using commercial ALT (Catachem, C164–0A), and AST (Catachem, C154–0A) kits. Urinary fructose was quantified using a fructose assay kit (BioAssay Systems, EFRU-100). Liver lipid extracts were prepared as previously described (9). Liver homogenates were then used for the quantification of triglycerides and cholesterol described above. For the data in Figure 3 serum total, HDL and LDL cholesterol, AST, ALT, alkaline phosphatase and total bilirubin were measured at Alnylam Pharmaceuticals. In brief, Whole-

venous blood was collected into serum separator tubes (BD Microtainer) and allowed to clot at room temperature for 30 min prior to centrifugation at 3000 RPM ($1489 \times g$) for 10 min at 4 °C. Serum was then aliquoted and stored at -80 °C until analyses. Serum chemistries were analyzed using the AU400 chemistry analyzer (Beckman Coulter- Brea, CA, USA), with reagents provided by Beckman Coulter, Randox, and Sekisui Diagnostics. Differences between group means were evaluated for statistical significance using one-way ANOVA in GraphPad Prism 7 consistent with methodology previous published in (76).

qPCR and mRNA quantification

mRNA was extracted by homogenizing liver tissue in trizol, treating with chloroform and participating in 70% ethanol. mRNA was purified using RNeasy Mini Kit columns (Qiagen, #74106). cDNA was made using High Capacity cDNA Revers Transcription Kit (Applied Biosystems, #4368813). qPCR was performed utilizing C1000 Thermal Cycler (BioRad, CFX384) and QuantStudio™ 7 Flex Real-Time PCR System (ThermoFisher Scientific, 4485701). Mouse and human primer sequences used are listed in the supplemental tables 1 and 2, respectively.

Protein Extraction and Immunoblot

Tissues were homogenized in RIPA buffer (EMD Millipore) with protease and phosphatase inhibitor cocktail (Bimake.com, B14002, B15002). Proteins were separated using SDS-PAGE and transferred to PVDF membrane (Millipore). Immunoblotting was achieved using the indicated antibodies listed in the supplemental table 3. Images were captured by ChemiDoc MP imaging system (BioRad, 12003154) and iBright imaging system (Thermo Fisher, CL1000). Quantification of immunoblots was performed using ImageJ.

Generation of Stable KHK-C Overexpressing Hepatocytes

Human hepatic HepG2 cells were cultured under standard conditions in 1:1 Dulbecco's Modified Eagle Medium (DMEM) and Ham's F-12 media (Corning) supplemented with 10% fetal bovine serum (FBS, Corning) and 1% penicillin-streptomycin in a 5% CO₂-humidified cell culture incubator at 37°C. Lentiviral particles were purchased from Origene (MR204149L2V) containing the mouse KHK-C sequence fused to GFP. HepG2 cells were transduced with lentivirus at a MOI of 5 and media was changed every two days thereafter (<https://star-protocols.cell.com/protocols/913>). After 5 days, cells were sorted for GFP-intensity and only individual GFP+ cells were collected in 96-well plates and propagated for an additional 2–3 weeks. Similarly GFP tagged KHK-C was overexpressed in mouse AML-12 cells. KHK-C was quantified in these clones by both QPCR and western blot. Only the highest expressing clones were used for subsequent experiments.

Cell Culture Assays

For protein stability experiments, human wild type HepG2 and KHK-C OE cells were treated in low glucose media supplemented with 25 µg/mL cycloheximide, or media containing 25 mM fructose for 4- and 8 hours prior to protein extraction. For autophagy experiments, wild type and KHK-C OE HepG2 cells were cultured in complete media (DMEM/F12 with 10% FBS and 1% P/S), media without serum (DMEM/F12 with 1% P/S),

or media supplemented with 50 μM chloroquine for 16 hours prior to protein extraction. Protein was used for subsequent western blot analysis.

Proteomic analysis and bioinformatic data processing

Cell pellets of wild type and KHK-C OE AML-12 hepatocytes, with 4 replicates each, were solubilized in 700 μL of lysis buffer containing 8 M urea, 200 mM triethylammonium bicarbonate (TEAB), pH 8, 75 mM sodium chloride, 1 μM trichostatin A, 3 mM nicotinamide, and 1x protease/phosphatase inhibitor cocktail (Thermo Fisher Scientific, Waltham, MA), and sonicated using a probe sonicator. Protein concentrations were determined using a Bicinchoninic Acid Protein (BCA) Assay (Thermo Fisher Scientific, Waltham, MA). Proteins (2.1 mg) were reduced using 20 mM dithiothreitol (DTT) in 50 mM TEAB for 30 min at 37 $^{\circ}\text{C}$, and after cooling to room temperature, alkylated with 40 mM iodoacetamide (IAA) for 30 min at room temperature in the dark. Samples were diluted 4-fold with 50 mM TEAB, pH 8, and proteins were digested overnight with a solution of sequencing-grade trypsin (Promega, San Luis Obispo, CA) in 50 mM TEAB at a 1:50 (wt:wt) enzyme:protein ratio at 37 $^{\circ}\text{C}$. This reaction was quenched with 1% formic acid (FA) and the sample was clarified by centrifugation at 2,000 x g for 10 min at room temperature. Clarified peptide samples were desalted with Oasis 10-mg Sorbent Cartridges (Waters, Milford, MA). 100 μg of each peptide elution were aliquoted, vacuum dried, and re-suspended in 0.2% FA in water at a final concentration of 1 $\mu\text{g}/\mu\text{L}$. Finally, indexed retention time standard peptides (iRT; Biognosys, Schlieren, Switzerland) (77) were spiked in the samples according to manufacturer's instructions.

LC-MS/MS analyses were performed on a Dionex UltiMate 3000 system online coupled to an Orbitrap Eclipse Tribrid mass spectrometer (both from Thermo Fisher Scientific, San Jose, CA). The solvent system consisted of 2% ACN, 0.1% FA in water (solvent A) and 98% ACN, 0.1% FA in water (solvent B). Briefly, proteolytic peptides (400 ng) were loaded onto an Acclaim PepMap 100 C18 trap column (100 μm x 20 mm and 5 μm particle size; Thermo Fisher Scientific) for 5 min at 5 $\mu\text{L}/\text{min}$ with 100% solvent A. Peptides were eluted on to an Acclaim PepMap 100 C18 analytical column (75 μm x 50 cm, 3 μm particle size; Thermo Fisher Scientific) at 0.3 $\mu\text{L}/\text{min}$ using the following gradient of solvent B: 2% for 5 min, linear from 2% to 20% in 125 min, linear from 20% to 32% in 40 min, and up to 80% in 1 min, then holding at 80% for 10 min, and equilibrating the system at 2% B for 29 min - with a total gradient length of 210 min. All samples were acquired in data-independent acquisition (DIA) mode. Full MS spectra were collected at 120,000 resolution (AGC target: 3e6 ions, maximum injection time: 60 ms, 350–1,650 m/z), and MS2 spectra at 30,000 resolution (AGC target: 3e6 ions, maximum injection time: Auto, NCE: 27, fixed first mass 200 m/z). The DIA precursor ion isolation scheme consisted of 26 variable windows covering the 350–1,650 m/z mass range with an overlap of 1 m/z.

DIA data was processed in Spectronaut (version 15.1.210713.50606) using directDIA. Data was searched against a database containing all *Mus musculus* entries extracted from SwissProt (17,090 protein entries; January 27, 2022). Trypsin/P was set as digestion enzyme and two missed cleavages were allowed. Cysteine carbamidomethylation was set as fixed modification, and methionine oxidation and protein N-terminus acetylation as variable

modifications. Data extraction parameters were set as dynamic. Identification was performed using 1% precursor and protein q-value. Quantification was based on the extracted ion chromatograms (XICs) of 3–6 MS2 fragment ions, local normalization was applied, and iRT profiling was selected. Differential expression analysis was performed using a paired t-test, and p-values were corrected for multiple testing, specifically applying group wise testing corrections using the Storey method (78). Protein groups with at least two unique peptides, q-value < 0.01 and absolute Log₂(fold-change) > 0.58 were considered to be significantly altered.

Over-representation analyses (ORA) were performed using Consensus Path DB-mouse (Release MM11, 14.10.2021) (79) to evaluate which gene ontology terms were significantly enriched. Gene ontology terms identified from the ORA were subjected to the following filters: q-value < 0.05, term category = b (biological process), and term level > 3.

Hybrid Mouse Diversity Panel

This study was performed by an independent investigator and they shared their banked data with us on 5/20/2021. In brief, over 100 inbred strains of male and female mice, from the Hybrid Mouse Diversity Panel study, were made hyperlipidemic by expressing the human ApoE-Leiden and CETP transgenes, and starting at 8-weeks of age were fed Western diet (Research Diets D10042101) for 16-weeks before sacrifice (40). Global transcript levels in aorta and liver were quantified, as well as complete metabolic profiling, including but not limited to adiposity, plasma lipid, insulin and glucose levels were measured. We correlated the expression of KHK in the liver with adiposity, insulin, HOMA-IR, and hepatic triglycerides (40). The correlation analysis was completed using the Pearson correlation coefficient.

RNA Sequence Analysis and Bioinformatics Methods

HTG EdgeSeq mRNA sequence analysis was performed by the BioPolymers Facility at Harvard Medical School. Reads were aligned to the mouse transcriptome with Kallisto and the transcript counts were converted to gene counts with tximport. One sample was supposed to be KHK-treated, but its KHK expression was as large as the non-treated, and thus this sample was removed. Genes must have at least one count per million (CPM) in at least four samples, or they are filtered out. We normalized expression with trimmed mean of M-values (TMM) and transformed to logCPM with Voom. To discover the differential genes, we use limma, an R package that powers differential expression analyses. We applied the Fry function of the Rotation Gene Set Test (Roast) method in the limma R package to perform pathway analysis. We obtained the Gene sets from the MSigDB Collections. We selected the gene sets that belong to the canonical pathways (CP) and Gene Ontology (GO). To get an overall view of the similarity and/or difference of the samples, we performed principal component analysis (PCA). In the volcano plot, the top genes with either the smallest p-values or largest logFC are labeled. In the heatmap, the same set of top genes are used, and the z-scores of the logCPM are plotted. We downloaded public datasets from the Gene Expression Omnibus (GEO) and compared between groups with limma.

Statistical Analyses

All data are presented as mean \pm SEM. The data analysis, comparing the effects of control to experimental conditions was first analyzed using one-way analysis of variance (ANOVA) with Dunnett's multiple comparisons test for comparison of the individual groups. Significant difference among control and experimental groups is noted with a number sign (#) and significant difference between the individual groups under a black line is designated by an asterisk (*). For both signs, the single symbol represents a p value of <0.05 , two symbols represent a p value of <0.01 , and three symbols denote a p value of <0.001 , and four symbols stand for a p value of <0.0001 throughout the study.

Supplementary Material

Refer to Web version on PubMed Central for supplementary material.

Conflict of Interest/Financial Disclosure Statement

Alnylam Pharmaceuticals, Inc., sponsored the research with grant funding and performed KHK knockdown experiment at their institution. JW, LN, HCT and KF are employees of Alnylam Pharmaceuticals. Experimental Pathology Laboratories, Inc., was hired by Alnylam to objectively grade liver histology. This work was also supported by NASPGHAN Foundation Young Investigator Award, Pediatric Scientist Development Program Award (HD000850) and COCVD Pilot and Feasibility Grant (GM127211) awarded to SS; K01DK128022 and UL1TR001998 to RNH; R01 DK067536 to RNK; R01DK099222, Department of Defense grant W81XWH2010392, & CCRF Endowed Scholar Award to SD and R01 DK117850, and R01 HL147883 grants to AJL. We acknowledge the support of instrumentation for the Orbitrap Eclipse Tribrid from the NCRR shared instrumentation grant 1S10 OD028654 to B.S. Rashmi Nemade, Ph.D. of BioMedText, Inc. helped edit the manuscript.

DATA AVAILABILITY

Raw data and complete MS data sets were uploaded to the Center for Computational Mass Spectrometry, the MassIVE repository at UCSD, and can be downloaded using the following link: <https://massive.ucsd.edu/ProteoSAFe/dataset.jsp?task=832a44837fba49219ebef460ef6de77c> MassIVE ID number: MSV000089043; ProteomeXchange ID: PXD032190. (Go to <https://massive.ucsd.edu/ProteoSAFe/private-dataset.jsp?task=832a44837fba49219ebef460ef6de77c> in the upper right corner: Enter Username: MSV000089043_reviewer; Password: winter In the repository entry in MassIVE click the 'Browse Dataset Files' button.) RNAseq data will be deposited in a public repository after acceptance of the manuscript for publication.

REFERENCES

1. Loomba R, Sanyal AJ: The global NAFLD epidemic. *Nat Rev Gastroenterol Hepatol* 2013;10:686–690 [PubMed: 24042449]
2. Aurelia Radulescu AJD, Killian Mary, Attia Suzanna L., Mouzaki Marialena, Fuchs George J., Kohli Rohit, Bada Henrietta, Kern Philip A., Samir Softic: Stratification by Obesity Class, Rather than Age, Can Identify a Higher Percent of Children at Risk for NAFLD and Metabolic Dysfunction. *Pediatric Obesity* 2021;
3. Nouredin M, Vipani A, Bresee C, Todo T, Kim IK, Alkhouri N, Setiawan VW, Tran T, Ayoub WS, Lu SC, Klein AS, Sundaram V, Nissen NN: NASH Leading Cause of Liver Transplant in Women: Updated Analysis of Indications For Liver Transplant and Ethnic and Gender Variances. *Am J Gastroenterol* 2018;113:1649–1659 [PubMed: 29880964]

4. Feldstein AE, Charatcharoenwitthaya P, Treeprasertsuk S, Benson JT, Enders FB, Angulo P: The natural history of non-alcoholic fatty liver disease in children: a follow-up study for up to 20 years. *Gut* 2009;58:1538–1544 [PubMed: 19625277]
5. Ekstedt M, Franzen LE, Mathiesen UL, Thorelius L, Holmqvist M, Bodemar G, Kechagias S: Long-term follow-up of patients with NAFLD and elevated liver enzymes. *Hepatology* 2006;44:865–873 [PubMed: 17006923]
6. Ouyang X, Cirillo P, Sautin Y, McCall S, Bruchette JL, Diehl AM, Johnson RJ, Abdelmalek MF: Fructose consumption as a risk factor for non-alcoholic fatty liver disease. *J Hepatol* 2008;48:993–999 [PubMed: 18395287]
7. Abdelmalek MF, Suzuki A, Guy C, Unalp-Arida A, Colvin R, Johnson RJ, Diehl AM, Nonalcoholic Steatohepatitis Clinical Research N: Increased fructose consumption is associated with fibrosis severity in patients with nonalcoholic fatty liver disease. *Hepatology* 2010;51:1961–1971 [PubMed: 20301112]
8. Mosca A, Nobili V, De Vito R, Crudele A, Scorletti E, Villani A, Alisi A, Byrne CD: Serum uric acid concentrations and fructose consumption are independently associated with NASH in children and adolescents. *J Hepatol* 2017;66:1031–1036 [PubMed: 28214020]
9. Softic S, Gupta MK, Wang GX, Fujisaka S, O’Neill BT, Rao TN, Willoughby J, Harbison C, Fitzgerald K, Ilkayeva O, Newgard CB, Cohen DE, Kahn CR: Divergent effects of glucose and fructose on hepatic lipogenesis and insulin signaling. *J Clin Invest* 2017;127:4059–4074 [PubMed: 28972537]
10. Diggle CP, Shires M, Leitch D, Brooke D, Carr IM, Markham AF, Hayward BE, Asipu A, Bonthron DT: Ketohexokinase: expression and localization of the principal fructose-metabolizing enzyme. *J Histochem Cytochem* 2009;57:763–774 [PubMed: 19365088]
11. Helsley RN, Moreau F, Gupta MK, Radulescu A, DeBosch B, Softic S: Tissue-Specific Fructose Metabolism in Obesity and Diabetes. *Curr Diab Rep* 2020;20:64 [PubMed: 33057854]
12. Mirtschink P, Krishnan J, Grimm F, Sarre A, Horl M, Kayikci M, Fankhauser N, Christinat Y, Cortijo C, Feehan O, Vukolic A, Sossalla S, Stehr SN, Ule J, Zamboni N, Pedrazzini T, Krek W: HIF-driven SF3B1 induces KHK-C to enforce fructolysis and heart disease. *Nature* 2015;522:444–449 [PubMed: 26083752]
13. Park TJ, Reznick J, Peterson BL, Blass G, Omerbasic D, Bennett NC, Kuich P, Zasada C, Browe BM, Hamann W, Applegate DT, Radke MH, Kosten T, Lutermann H, Gavaghan V, Eigenbrod O, Begay V, Amoroso VG, Govind V, Minshall RD, Smith ESJ, Larson J, Gotthardt M, Kempa S, Lewin GR: Fructose-driven glycolysis supports anoxia resistance in the naked mole-rat. *Science* 2017;356:307–311 [PubMed: 28428423]
14. Softic S, Cohen DE, Kahn CR: Role of Dietary Fructose and Hepatic De Novo Lipogenesis in Fatty Liver Disease. *Dig Dis Sci* 2016;61:1282–1293 [PubMed: 26856717]
15. Softic S, Meyer JG, Wang GX, Gupta MK, Batista TM, Lauritzen H, Fujisaka S, Serra D, Herrero L, Willoughby J, Fitzgerald K, Ilkayeva O, Newgard CB, Gibson BW, Schilling B, Cohen DE, Kahn CR: Dietary Sugars Alter Hepatic Fatty Acid Oxidation via Transcriptional and Post-translational Modifications of Mitochondrial Proteins. *Cell Metab* 2019;30:735–753 e734
16. Hetz C: The unfolded protein response: controlling cell fate decisions under ER stress and beyond. *Nat Rev Mol Cell Biol* 2012;13:89–102 [PubMed: 22251901]
17. Kim JY, Garcia-Carbonell R, Yamachika S, Zhao P, Dhar D, Loomba R, Kaufman RJ, Saltiel AR, Karin M: ER Stress Drives Lipogenesis and Steatohepatitis via Caspase-2 Activation of S1P. *Cell* 2018;175:133–145 e115
18. Jensen T, Abdelmalek MF, Sullivan S, Nadeau KJ, Green M, Roncal C, Nakagawa T, Kuwabara M, Sato Y, Kang DH, Tolani DR, Sanchez-Lozada LG, Rosen HR, Lanaspas MA, Diehl AM, Johnson RJ: Fructose and sugar: A major mediator of non-alcoholic fatty liver disease. *J Hepatol* 2018;68:1063–1075 [PubMed: 29408694]
19. Im YR, Hunter H, de Gracia Hahn D, Duret A, Cheah Q, Dong J, Fairey M, Hjalmarsson C, Li A, Lim HK, McKeown L, Mitrofan CG, Rao R, Utukuri M, Rowe IA, Mann JP: A Systematic Review of Animal Models of NAFLD Finds High-Fat, High-Fructose Diets Most Closely Resemble Human NAFLD. *Hepatology* 2021;74:1884–1901 [PubMed: 33973269]

20. Tsuru A, Imai Y, Saito M, Kohno K: Novel mechanism of enhancing IRE1alpha-XBP1 signalling via the PERK-ATF4 pathway. *Sci Rep* 2016;6:24217
21. Baird TD, Wek RC: Eukaryotic initiation factor 2 phosphorylation and translational control in metabolism. *Adv Nutr* 2012;3:307–321 [PubMed: 22585904]
22. Park SW, Zhou Y, Lee J, Lu A, Sun C, Chung J, Ueki K, Ozcan U: The regulatory subunits of PI3K, p85alpha and p85beta, interact with XBP-1 and increase its nuclear translocation. *Nat Med* 2010;16:429–437 [PubMed: 20348926]
23. Kahn CR: Role of insulin receptors in insulin-resistant states. *Metabolism* 1980;29:455–466 [PubMed: 6990180]
24. Kohli R, Kirby M, Xanthakos SA, Softic S, Feldstein AE, Saxena V, Tang PH, Miles L, Miles MV, Balistreri WF, Woods SC, Seeley RJ: High-fructose, medium chain trans fat diet induces liver fibrosis and elevates plasma coenzyme Q9 in a novel murine model of obesity and nonalcoholic steatohepatitis. *Hepatology* 2010;52:934–944 [PubMed: 20607689]
25. Creeden JF, Kipp ZA, Xu M, Flight RM, Moseley HNB, Martinez GJ, Lee WH, Alganem K, Imami AS, McMullen MR, Roychowdhury S, Nawabi AM, Hipp JA, Softic S, Weinman SA, McCullumsmith R, Nagy LE, Hinds TD, Jr.: Hepatic kinome atlas: An in-depth identification of kinase pathways in liver fibrosis of humans and rodents. *Hepatology* 2022;
26. Kleiner DE, Brunt EM, Van Natta M, Behling C, Contos MJ, Cummings OW, Ferrell LD, Liu YC, Torbenson MS, Unalp-Arida A, Yeh M, McCullough AJ, Sanyal AJ, Nonalcoholic Steatohepatitis Clinical Research N: Design and validation of a histological scoring system for nonalcoholic fatty liver disease. *Hepatology* 2005;41:1313–1321 [PubMed: 15915461]
27. Morkel M, Wenkel J, Bannister AJ, Kouzarides T, Hagemeyer C: An E2F-like repressor of transcription. *Nature* 1997;390:567–568 [PubMed: 9403682]
28. Li X, Zhao J, Geng J, Chen F, Wei Z, Liu C, Zhang X, Li Q, Zhang J, Gao L, Xie J, Xu B: Long non-coding RNA MEG3 knockdown attenuates endoplasmic reticulum stress-mediated apoptosis by targeting p53 following myocardial infarction. *J Cell Mol Med* 2019;23:8369–8380 [PubMed: 31631486]
29. Kato M, Wang M, Chen Z, Bhatt K, Oh HJ, Lanting L, Deshpande S, Jia Y, Lai JY, O'Connor CL, Wu Y, Hodgins JB, Nelson RG, Bitzer M, Natarajan R: An endoplasmic reticulum stress-regulated lncRNA hosting a microRNA megacluster induces early features of diabetic nephropathy. *Nat Commun* 2016;7:12864
30. Park SH, Helsley RN, Noetzi L, Tu HC, Wallenius K, O'Mahony G, Boucher J, Liu J, Softic S: A luminescence-based protocol for assessing fructose metabolism via quantification of ketohexokinase enzymatic activity in mouse or human hepatocytes. *STAR Protoc* 2021;2:100731
31. Liang RJ, Taylor S, Nahiyaan N, Song J, Murphy CJ, Dantas E, Cheng S, Hsu TW, Ramsamooj S, Grover R, Hwang SK, Ngo B, Cantley LC, Rhee KY, Goncalves MD: GLUT5 (SLC2A5) enables fructose-mediated proliferation independent of ketohexokinase. *Cancer Metab* 2021;9:12 [PubMed: 33762003]
32. Talloczy Z, Jiang W, Virgin HWt, Leib DA, Scheuner D, Kaufman RJ, Eskelinen EL, Levine B: Regulation of starvation- and virus-induced autophagy by the eIF2alpha kinase signaling pathway. *Proc Natl Acad Sci U S A* 2002;99:190–195 [PubMed: 11756670]
33. Rashid HO, Yadav RK, Kim HR, Chae HJ: ER stress: Autophagy induction, inhibition and selection. *Autophagy* 2015;11:1956–1977 [PubMed: 26389781]
34. Klionsky DJ, Abdel-Aziz AK, Abdelfatah S, Abdellatif M, Abdoli A, Abel S, Abeliovich H, Abildgaard MH, Abudu YP, Acevedo-Arozena A, Adamopoulos IE, : Guidelines for the use and interpretation of assays for monitoring autophagy (4th edition)(1). *Autophagy* 2021;17:1–382 [PubMed: 33634751]
35. Gillet LC, Navarro P, Tate S, Rost H, Selevsek N, Reiter L, Bonner R, Aebersold R: Targeted data extraction of the MS/MS spectra generated by data-independent acquisition: a new concept for consistent and accurate proteome analysis. *Mol Cell Proteomics* 2012;11:O111 016717
36. Collins BC, Hunter CL, Liu Y, Schilling B, Rosenberger G, Bader SL, Chan DW, Gibson BW, Gingras AC, Held JM, Hirayama-Kurogi M, Hou G, Krisp C, Larsen B, Lin L, Liu S, Molloy MP, Moritz RL, Ohtsuki S, Schlapbach R, Selevsek N, Thomas SN, Tzeng SC, Zhang H, Aebersold

- R: Multi-laboratory assessment of reproducibility, qualitative and quantitative performance of SWATH-mass spectrometry. *Nat Commun* 2017;8:291 [PubMed: 28827567]
37. Ozcan U, Yilmaz E, Ozcan L, Furuhashi M, Vaillancourt E, Smith RO, Gorgun CZ, Hotamisligil GS: Chemical chaperones reduce ER stress and restore glucose homeostasis in a mouse model of type 2 diabetes. *Science* 2006;313:1137–1140 [PubMed: 16931765]
 38. Boucher J, Softic S, El Ouaamari A, Krumpoch MT, Kleinridders A, Kulkarni RN, O'Neill BT, Kahn CR: Differential Roles of Insulin and IGF-1 Receptors in Adipose Tissue Development and Function. *Diabetes* 2016;65:2201–2213 [PubMed: 27207537]
 39. Softic S, Boucher J, Solheim MH, Fujisaka S, Haering MF, Homan EP, Winnay J, Perez-Atayde AR, Kahn CR: Lipodystrophy Due to Adipose Tissue-Specific Insulin Receptor Knockout Results in Progressive NAFLD. *Diabetes* 2016;65:2187–2200 [PubMed: 27207510]
 40. Bennett BJ, Davis RC, Civelek M, Orozco L, Wu J, Qi H, Pan C, Packard RR, Eskin E, Yan M, Kirchgessner T, Wang Z, Li X, Gregory JC, Hazen SL, Gargalovic PS, Lusis AJ: Genetic Architecture of Atherosclerosis in Mice: A Systems Genetics Analysis of Common Inbred Strains. *PLoS Genet* 2015;11:e1005711
 41. Lopez-Vicario C, Gonzalez-Periz A, Rius B, Moran-Salvador E, Garcia-Alonso V, Lozano JJ, Bataller R, Cofan M, Kang JX, Arroyo V, Claria J, Titos E: Molecular interplay between Delta5/Delta6 desaturases and long-chain fatty acids in the pathogenesis of non-alcoholic steatohepatitis. *Gut* 2014;63:344–355 [PubMed: 23492103]
 42. Arendt BM, Comelli EM, Ma DW, Lou W, Teterina A, Kim T, Fung SK, Wong DK, McGilvray I, Fischer SE, Allard JP: Altered hepatic gene expression in nonalcoholic fatty liver disease is associated with lower hepatic n-3 and n-6 polyunsaturated fatty acids. *Hepatology* 2015;61:1565–1578 [PubMed: 25581263]
 43. Pihlajamaki J, Boes T, Kim EY, Dearie F, Kim BW, Schroeder J, Mun E, Nasser I, Park PJ, Bianco AC, Goldfine AB, Patti ME: Thyroid hormone-related regulation of gene expression in human fatty liver. *J Clin Endocrinol Metab* 2009;94:3521–3529 [PubMed: 19549744]
 44. Ahrens M, Ammerpohl O, von Schonfels W, Kolarova J, Bens S, Itzel T, Teufel A, Herrmann A, Brosch M, Hinrichsen H, Erhart W, Egberts J, Sipos B, Schreiber S, Hasler R, Sticker F, Becker T, Krawczak M, Rocken C, Siebert R, Schafmayer C, Hampe J: DNA methylation analysis in nonalcoholic fatty liver disease suggests distinct disease-specific and remodeling signatures after bariatric surgery. *Cell Metab* 2013;18:296–302 [PubMed: 23931760]
 45. Moylan CA, Pang H, Dellinger A, Suzuki A, Garrett ME, Guy CD, Murphy SK, Ashley-Koch AE, Choi SS, Michelotti GA, Hampton DD, Chen Y, Tillmann HL, Hauser MA, Abdelmalek MF, Diehl AM: Hepatic gene expression profiles differentiate presymptomatic patients with mild versus severe nonalcoholic fatty liver disease. *Hepatology* 2014;59:471–482 [PubMed: 23913408]
 46. Mas VR, Maluf DG, Archer KJ, Yanek K, Kong X, Kulik L, Freise CE, Olthoff KM, Ghobrial RM, McIver P, Fisher R: Genes involved in viral carcinogenesis and tumor initiation in hepatitis C virus-induced hepatocellular carcinoma. *Mol Med* 2009;15:85–94 [PubMed: 19098997]
 47. Malhi H, Kaufman RJ: Endoplasmic reticulum stress in liver disease. *J Hepatol* 2011;54:795–809 [PubMed: 21145844]
 48. Gonzalez-Rodriguez A, Mayoral R, Agra N, Valdecantos MP, Pardo V, Miquilena-Colina ME, Vargas-Castrillon J, Lo Iacono O, Corazzari M, Fimia GM, Piacentini M, Muntane J, Bosca L, Garcia-Monzon C, Martin-Sanz P, Valverde AM: Impaired autophagic flux is associated with increased endoplasmic reticulum stress during the development of NAFLD. *Cell Death Dis* 2014;5:e1179
 49. Lee AH, Scapa EF, Cohen DE, Glimcher LH: Regulation of hepatic lipogenesis by the transcription factor XBP1. *Science* 2008;320:1492–1496 [PubMed: 18556558]
 50. Softic S, Stanhope KL, Boucher J, Divanovic S, Lanaspá MA, Johnson RJ, Kahn CR: Fructose and hepatic insulin resistance. *Crit Rev Clin Lab Sci* 2020:1–15
 51. Cen HH, Hussein B, Botezelli JD, Wang S, Zhang JA, Noursadeghi N, Jessen N, Rodrigues B, Timmons JA, Johnson JD: Human and mouse muscle transcriptomic analyses identify insulin receptor mRNA downregulation in hyperinsulinemia-associated insulin resistance. *FASEB J* 2022;36:e22088

52. Helsley RN, Park SH, Vekaria HJ, Sullivan PG, Conroy LR, Sun RC, Romero MDM, Herrero L, Bons J, King CD, Rose J, Meyer JG, Schilling B, Kahn CR, Softic S: Ketohexokinase-C regulates global protein acetylation to decrease carnitine palmitoyltransferase 1a-mediated fatty acid oxidation. *J Hepatol* 2023;
53. Choi WG, Han J, Kim JH, Kim MJ, Park JW, Song B, Cha HJ, Choi HS, Chung HT, Lee IK, Park TS, Hatzoglou M, Choi HS, Yoo HJ, Kaufman RJ, Back SH: eIF2alpha phosphorylation is required to prevent hepatocyte death and liver fibrosis in mice challenged with a high fructose diet. *Nutr Metab (Lond)* 2017;14:48 [PubMed: 28781602]
54. Hao Q, Heo JM, Nocek BP, Hicks KG, Stoll VS, Remarcik C, Hackett S, LeBon L, Jain R, Eaton D, Rutter J, Wong YL, Sidrauski C: Sugar phosphate activation of the stress sensor eIF2B. *Nat Commun* 2021;12:3440 [PubMed: 34103529]
55. Lu PD, Jousse C, Marciniak SJ, Zhang Y, Novoa I, Scheuner D, Kaufman RJ, Ron D, Harding HP: Cytoprotection by pre-emptive conditional phosphorylation of translation initiation factor 2. *EMBO J* 2004;23:169–179 [PubMed: 14713949]
56. Back SH, Scheuner D, Han J, Song B, Ribick M, Wang J, Gildersleeve RD, Pennathur S, Kaufman RJ: Translation attenuation through eIF2alpha phosphorylation prevents oxidative stress and maintains the differentiated state in beta cells. *Cell Metab* 2009;10:13–26 [PubMed: 19583950]
57. Rajesh K, Krishnamoorthy J, Kazmierczak U, Tenkerian C, Papadakis AI, Wang S, Huang S, Koromilas AE: Phosphorylation of the translation initiation factor eIF2alpha at serine 51 determines the cell fate decisions of Akt in response to oxidative stress. *Cell Death Dis* 2015;6:e1591
58. Tabas I, Ron D: Integrating the mechanisms of apoptosis induced by endoplasmic reticulum stress. *Nat Cell Biol* 2011;13:184–190 [PubMed: 21364565]
59. Yang Y, Liu L, Naik I, Braunstein Z, Zhong J, Ren B: Transcription Factor C/EBP Homologous Protein in Health and Diseases. *Front Immunol* 2017;8:1612 [PubMed: 29230213]
60. DeZwaan-McCabe D, Riordan JD, Arensdorf AM, Icardi MS, Dupuy AJ, Rutkowski DT: The stress-regulated transcription factor CHOP promotes hepatic inflammatory gene expression, fibrosis, and oncogenesis. *PLoS Genet* 2013;9:e1003937
61. Toriguchi K, Hatano E, Tanabe K, Takemoto K, Nakamura K, Koyama Y, Seo S, Taura K, Uemoto S: Attenuation of steatohepatitis, fibrosis, and carcinogenesis in mice fed a methionine-choline deficient diet by CCAAT/enhancer-binding protein homologous protein deficiency. *J Gastroenterol Hepatol* 2014;29:1109–1118 [PubMed: 24329600]
62. Puri P, Mirshahi F, Cheung O, Natarajan R, Maher JW, Kellum JM, Sanyal AJ: Activation and dysregulation of the unfolded protein response in nonalcoholic fatty liver disease. *Gastroenterology* 2008;134:568–576 [PubMed: 18082745]
63. Rahman K, Liu Y, Kumar P, Smith T, Thorn NE, Farris AB, Anania FA: C/EBP homologous protein modulates liraglutide-mediated attenuation of non-alcoholic steatohepatitis. *Lab Invest* 2016;96:895–908 [PubMed: 27239734]
64. Fuchs CD, Claudel T, Scharnagl H, Stojakovic T, Trauner M: FXR controls CHOP expression in steatohepatitis. *FEBS Lett* 2017;591:3360–3368 [PubMed: 28895119]
65. Horton JD, Goldstein JL, Brown MS: SREBPs: activators of the complete program of cholesterol and fatty acid synthesis in the liver. *J Clin Invest* 2002;109:1125–1131 [PubMed: 11994399]
66. Chiang Morales MD, Chang CY, Le VL, Huang IT, Tsai IL, Shih HJ, Huang CJ: High-Fructose/High-Fat Diet Downregulates the Hepatic Mitochondrial Oxidative Phosphorylation Pathway in Mice Compared with High-Fat Diet Alone. *Cells* 2022;11
67. Ishimoto T, Lanaspa MA, Rivard CJ, Roncal-Jimenez CA, Orlicky DJ, Cicerchi C, McMahan RH, Abdelmalek MF, Rosen HR, Jackman MR, MacLean PS, Diggie CP, Asipu A, Inaba S, Kosugi T, Sato W, Maruyama S, Sanchez-Lozada LG, Sautin YY, Hill JO, Bonthron DT, Johnson RJ: High-fat and high-sucrose (western) diet induces steatohepatitis that is dependent on fructokinase. *Hepatology* 2013;58:1632–1643 [PubMed: 23813872]
68. Tetri LH, Basaranoglu M, Brunt EM, Yerian LM, Neuschwander-Tetri BA: Severe NAFLD with hepatic necroinflammatory changes in mice fed trans fats and a high-fructose corn syrup equivalent. *Am J Physiol Gastrointest Liver Physiol* 2008;295:G987–995 [PubMed: 18772365]

69. Ishimoto T, Lanaspas MA, Le MT, Garcia GE, Diggle CP, Maclean PS, Jackman MR, Asipu A, Roncal-Jimenez CA, Kosugi T, Rivard CJ, Maruyama S, Rodriguez-Iturbe B, Sanchez-Lozada LG, Bonthron DT, Sautin YY, Johnson RJ: Opposing effects of fructokinase C and A isoforms on fructose-induced metabolic syndrome in mice. *Proc Natl Acad Sci U S A* 2012;109:4320–4325 [PubMed: 22371574]
70. Lanaspas MA, Andres-Hernando A, Orlicky DJ, Cicerchi C, Jang C, Li N, Milagres T, Kuwabara M, Wempe MF, Rabinowitz JD, Johnson RJ, Tolan DR: Ketohexokinase C blockade ameliorates fructose-induced metabolic dysfunction in fructose-sensitive mice. *J Clin Invest* 2018;128:2226–2238 [PubMed: 29533924]
71. Shepherd EL, Saborano R, Northall E, Matsuda K, Ogino H, Yashiro H, Pickens J, Feaver RE, Cole BK, Hoang SA, Lawson MJ, Olson M, Figler RA, Reardon JE, Nishigaki N, Wamhoff BR, Gunther UL, Hirschfield G, Erion DM, Lalor PF: Ketohexokinase inhibition improves NASH by reducing fructose-induced steatosis and fibrogenesis. *JHEP Rep* 2021;3:100217
72. Attia SL, Softic S, Mouzaki M: Evolving Role for Pharmacotherapy in NAFLD/NASH. *Clin Transl Sci* 2021;14:11–19 [PubMed: 32583961]
73. Maryanoff BE, O'Neill JC, McComsey DF, Yabut SC, Luci DK, Jordan AD Jr, Masucci JA, Jones WJ, Abad MC, Gibbs AC, Petrounia I: Inhibitors of Ketohexokinase: Discovery of Pyrimidinopyrimidines with Specific Substitution that Complements the ATP-Binding Site. *ACS Med Chem Lett* 2011;2:538–543 [PubMed: 24900346]
74. Huard K, Ahn K, Amor P, Beebe DA, Borzilleri KA, Chrnyk BA, Coffey SB, Cong Y, Conn EL, Culp JS, Dowling MS, Gorgoglione MF, Gutierrez JA, Knafels JD, Lachapelle EA, Pandit J, Parris KD, Perez S, Pfeifferkorn JA, Price DA, Raymer B, Ross TT, Shavnya A, Smith AC, Subashi TA, Tesz GJ, Thuma BA, Tu M, Weaver JD, Weng Y, Withka JM, Xing G, Magee TV: Discovery of Fragment-Derived Small Molecules for in Vivo Inhibition of Ketohexokinase (KHK). *J Med Chem* 2017;60:7835–7849 [PubMed: 28853885]
75. Andres-Hernando A, Orlicky DJ, Kuwabara M, Ishimoto T, Nakagawa T, Johnson RJ, Lanaspas MA: Deletion of Fructokinase in the Liver or in the Intestine Reveals Differential Effects on Sugar-Induced Metabolic Dysfunction. *Cell Metab* 2020;32:117–127 e113
76. Janas MM, Schlegel MK, Harbison CE, Yilmaz VO, Jiang Y, Parmar R, Zlatev I, Castoreno A, Xu H, Shulga-Morskaya S, Rajeev KG, Manoharan M, Keirstead ND, Maier MA, Jadhav V: Selection of GalNAc-conjugated siRNAs with limited off-target-driven rat hepatotoxicity. *Nat Commun* 2018;9:723 [PubMed: 29459660]
77. Escher C, Reiter L, MacLean B, Ossola R, Herzog F, Chilton J, MacCoss MJ, Rinner O: Using iRT, a normalized retention time for more targeted measurement of peptides. *Proteomics* 2012;12:1111–1121 [PubMed: 22577012]
78. Burger T: Gentle Introduction to the Statistical Foundations of False Discovery Rate in Quantitative Proteomics. *J Proteome Res* 2018;17:12–22 [PubMed: 29067805]
79. Kamburov A, Wierling C, Lehrach H, Herwig R: ConsensusPathDB--a database for integrating human functional interaction networks. *Nucleic Acids Res* 2009;37:D623–628 [PubMed: 18940869]

HIGHLIGHTS

1. The combined intake of fructose and a HFD results in unresolved ER stress
2. Knockdown of Kethexokinase (KHK) improves NAFLD and metabolic dysfunction
3. Overexpression of KHK-C in vitro is sufficient to induce ER stress
4. KHK is elevated in genetically obese ob/ob, db/db and lipodystrophic FIRKO mice
5. KHK is increased in over 100 inbred strains of mice on Western diet and in patients with NAFLD

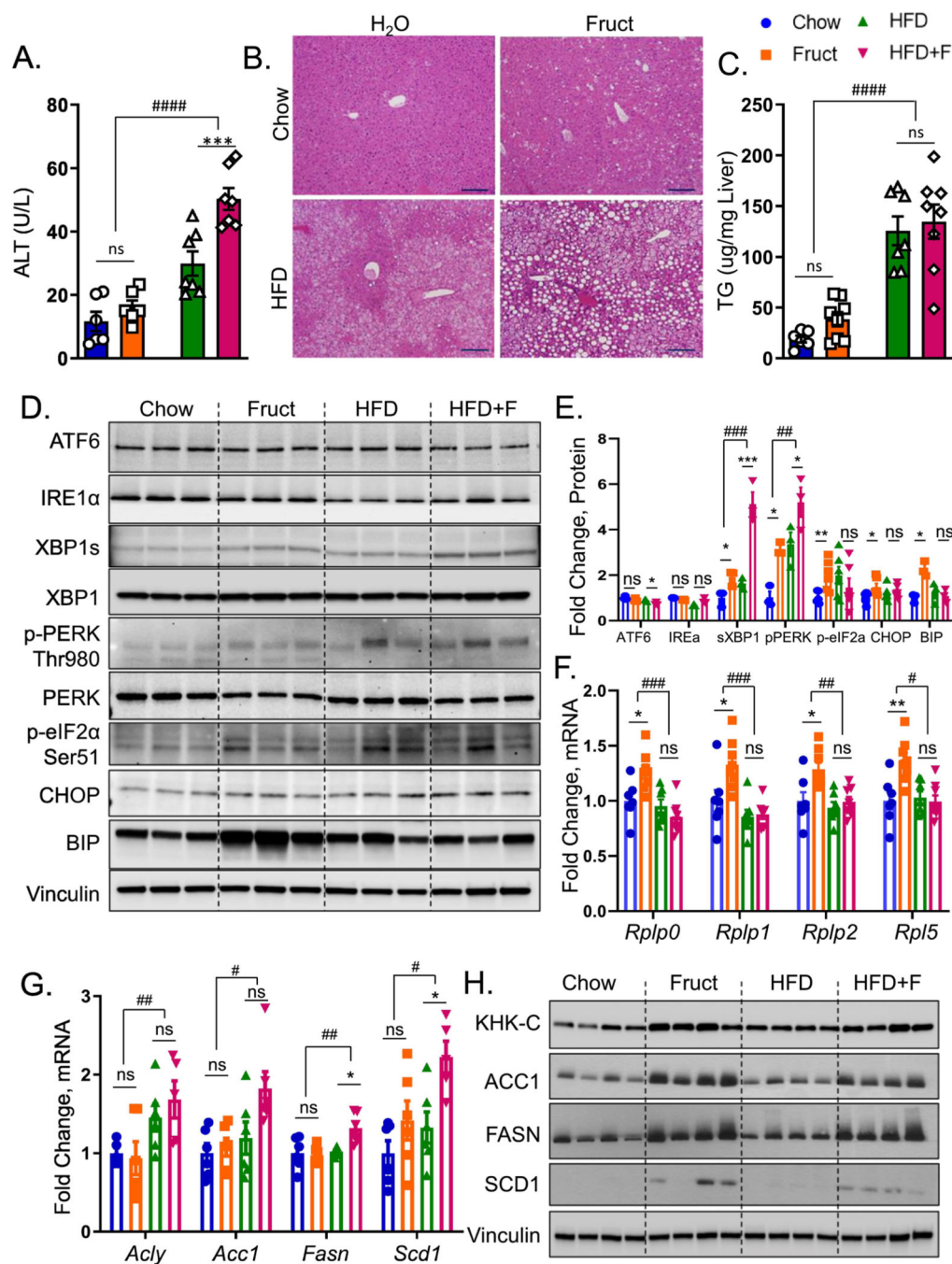


Figure 1. Intake of fructose and HFD leads to unresolved ER stress

A) Serum alanine aminotransferase (ALT) at sacrifice in male, C57BL/6J, mice drinking regular water (Chow) or 30% fructose-sweetened (Fruct) water on Chow diet or regular (HFD) or fructose water (HFD+F) on a HFD for 16 weeks. $n=6-8$ mice per group. B) Representative liver H&E histology, scale bar = 100 μm C) hepatic triglycerides from these mice. D) Western blot of (ATF6, IRE1 α , XBP1, PERK, eIF2 α , BIP, CHOP) and E) Image J quantification of their protein levels. $n=3-6$ per group. F) mRNA expression of ribosomal subunits (*Rplp0*, *Rplp1*, *Rplp2*, *Rpl5*), as well as G) mRNA and H) western blot of lipogenic

enzymes (ACLY, ACC1, FASN, SCD1) from liver homogenates of these mice. Sample number for WB is n=4 and for mRNA n=6 mice per group. Statistically significant results based on two-way ANOVA analysis are marked with # for row factor (diet), # p<0.05; ## p<0.01; ### p<0.0001, or * for column factor (fructose water), * p<0.05; ** p<0.01. All data are presented as mean \pm S.E.M.

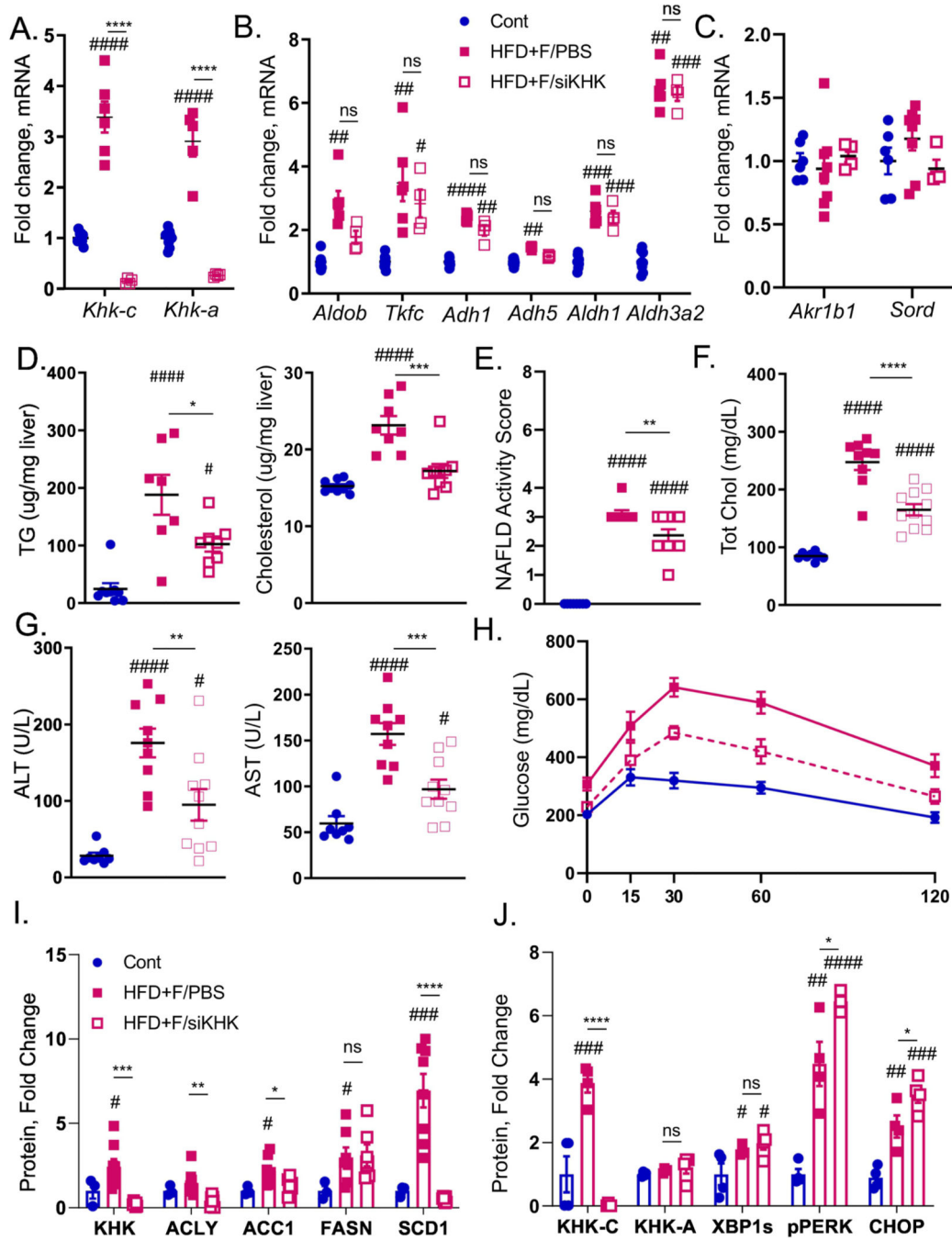


Figure 2. Ketohexokinase knockdown improves metabolic dysfunction in HFD+F-fed mice
 A) mRNA expression of genes regulating first, as well as B) second and third steps of fructose metabolism and genes responsible for C) endogenous fructose production in the livers of male, C57BL/6J mice fed chow diet on regular water (Chow), or HFD supplemented with 30% fructose and injected with PBS (HFD+F/PBS) or injected with KHK siRNA (HFD+F/siKHK) for the last 8 out of 20 weeks on the diets. Chow group for every gene was normalized to 1. Hepatic D) triglycerides (TG) and total cholesterol levels in the livers of these mice. E) NAFLD activity score based on the interpretation of liver

histology by an independent laboratory. Serum F) total cholesterol, as well as G) alanine aminotransferase (ALT) and aspartate aminotransferase (AST) obtained at sacrifice, n=8–11 mice per group. H) Glucose tolerance test in these mice performed after 18 weeks on the diet. Western blot quantification of liver KHK and proteins mediating I) *de novo* lipogenesis (ACLY, ACC1, FASN, SCD1) and J) ER stress (XBP1, PERK, CHOP) pathways. Sample number for WB is n=3–8 and for mRNA n=6 mice. Statistically significant results are marked with # using one-way ANOVA analysis, with Dunnett's multiple comparisons test to the Chow group, # p<0.05; ## p<0.01; ### p<0.001; #### p<0.0001, while * represents a post-hoc analysis between the groups under the line, *p <0.05; ** p<0.01, *** p<0.001, **** p<0.0001. All data are presented as mean ± S.E.M.

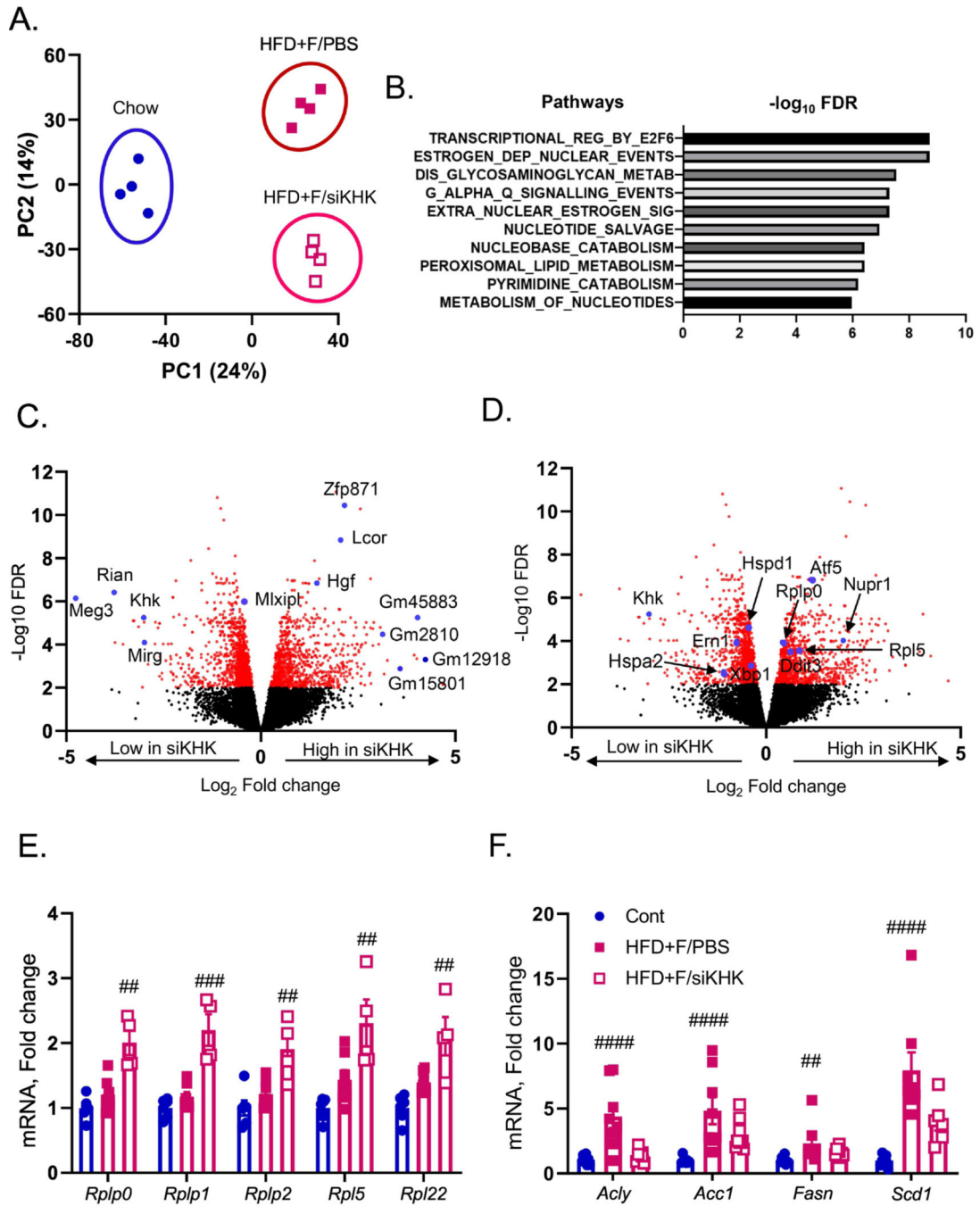


Figure 3. Knockdown of T-KHK in mice on HFD+F diet profoundly alters hepatic transcriptome
 A) Principal component analysis (PCA) of RNAseq data from the livers of mice presented in figure two. B) The most significantly altered pathways from this analysis. Volcano plot analysis in HFD+F-fed mice showing upregulated and downregulated genes with KHK knockdown (siKHK) compared to HFD+F/PBS control. Some of the most altered genes are labeled in C) and in D) are labeled the genes involved in ER stress. mRNA expression of genes regulating E) ribosomal subunits (*Rplp0*, *Rplp1*, *Rplp2*, *Rpl5*) and de novo lipogenesis (*Acly*, *Acc1*, *Fasn*, *Scd1*).

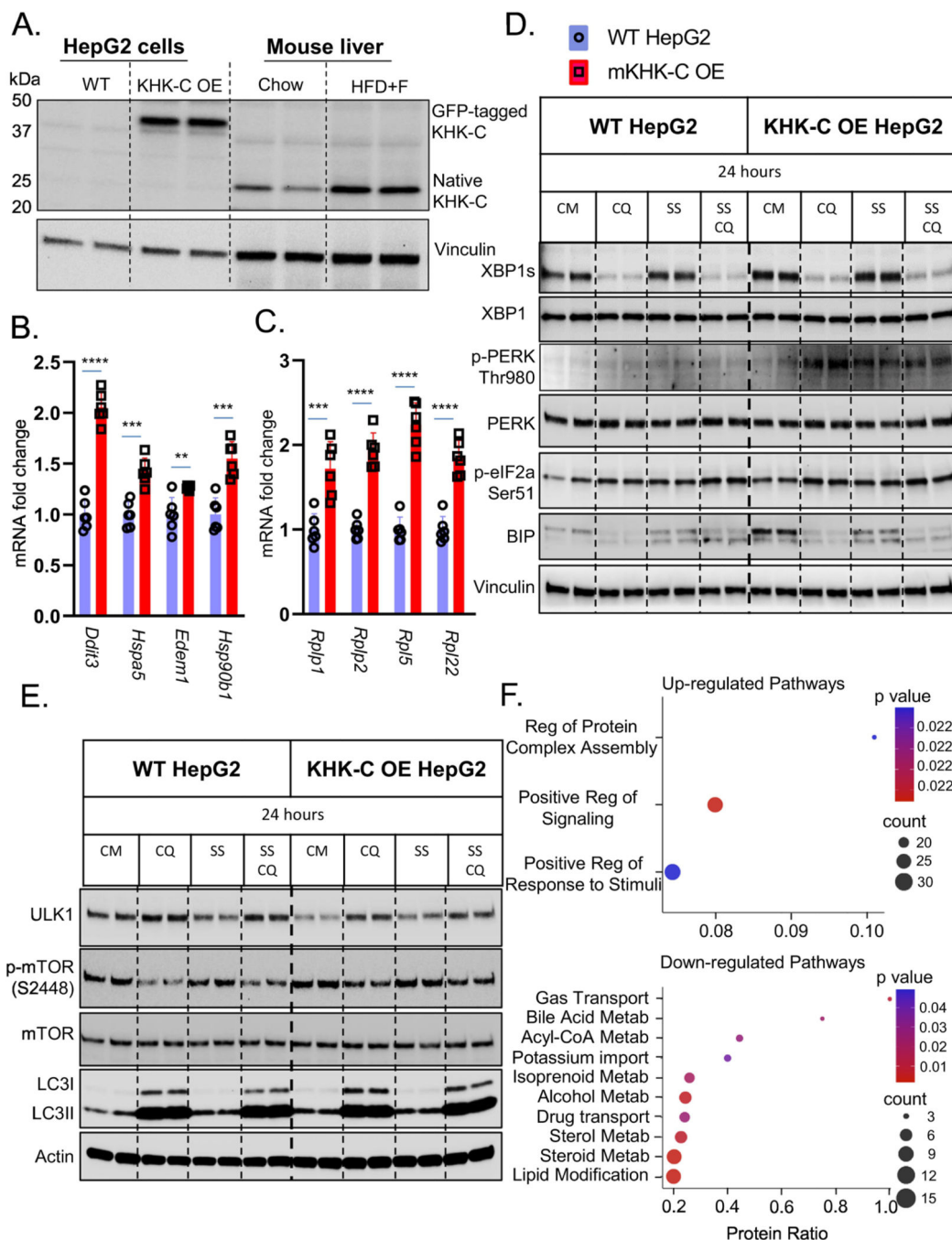


Figure 4. Overexpression of KHK-C Promotes ER Stress in vitro

Wild type (WT) HepG2 hepatocytes were engineered to overexpress (OE) mouse KHK-C (mKHK-C OE) tagged with GFP. A) Western blot for KHK-C in WT and KHK-C OE cells as compared to liver homogenates from Chow and HFD+F-fed mice from Fig1. mRNA expresses as assessed by qPCR of B) ER-stress (*Ddit3*, *Hspa5*, *Edem1*, *Hsp90b1*), C) ribosomal (*Rplp1*, *Rplp2*, *Rpl5*, *Rpl22*) genes were measured in WT HepG2 and mKHK-C OE cells, n=6 wells per group. D) WT HepG2 and mKHK-C OE hepatocytes were treated with complete media (CM), chloroquine (CQ), serum-starvation (SS), and a combination

of serum starvation and chloroquine for 24 hours. Western blot was used to analyze D) ER-stress and E) autophagy pathways. mKHK-C was also OE in AML-12 mouse hepatocytes to minimize cell specific effects. Proteomic analysis using data-independent acquisitions on an Orbitrap Eclipse Tribrid platform was performed and most significantly F) upregulated and downregulated pathways were determined using ConsensusPathDB functional annotation pathway analysis. Statistics were completed by an unpaired Student's t-test for qPCR data. ***P* 0.01; ****P* 0.001; *****P* 0.0001. All data are presented as mean ± S.E.M.

Author Manuscript

Author Manuscript

Author Manuscript

Author Manuscript

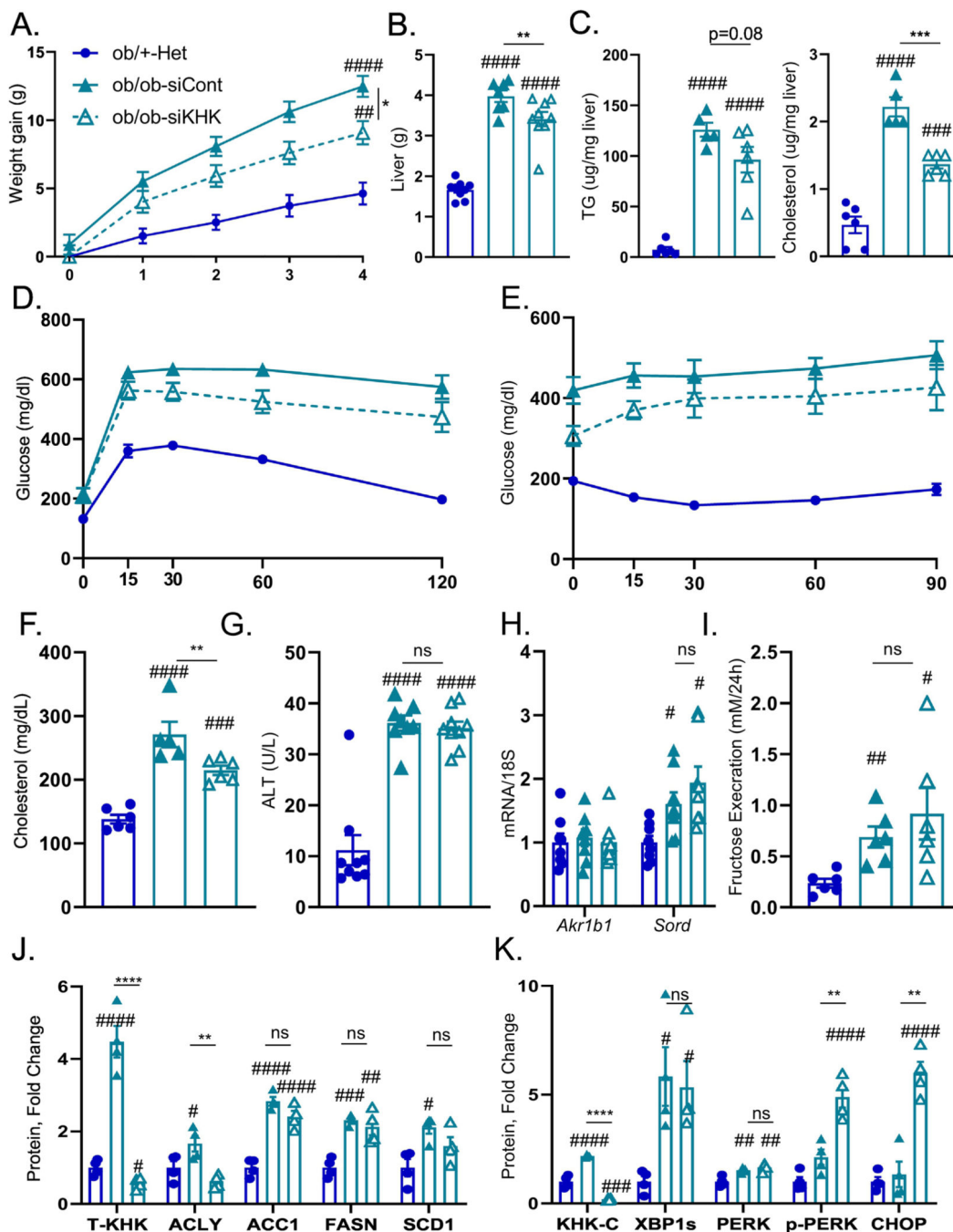


Figure 5. ER stress, but not lipogenesis, improves following T-KHK knockdown in Ob/Ob mice Weight gain A) in 2-month-old, male, heterozygote (Ob/+Het), as well as in homozygous, leptin-deficient mice (Ob/Ob-siCont) treated with luciferase control, or KHK siRNA (Ob/Ob-siKHK) for four weeks, n=6–9 mice per group. B) Liver weight, C) hepatic triglycerides (TG) and cholesterol levels in these mice. D) Glucose tolerance test in these mice performed after 2 weeks following siRNA injection. E) Insulin tolerance test in these mice performed after 3 weeks following siRNA injection. Serum F) total cholesterol, as well as G) alanine aminotransferase (ALT) obtained at sacrifice, n=6–9 mice per group. Hepatic mRNA

expression of H) genes regulating endogenous fructose production (*Akr1b1*, *Sord*). n=6 mice per group. I) Urinary fructose determined following 24h urine collection. Western blot quantification of KHK in the liver and proteins mediating J) *de novo* lipogenesis (ACLY, ACC1, FASN, SCD1) and K) ER stress (KHK-C, XBP1, PERK, CHOP) pathways. Sample number for WB is n=4. Statistically significant results are marked with # using one-way ANOVA analysis, with Dunnett's multiple comparisons test to the Chow group, # p<0.05; ## p<0.01; ### p<0.001; #### p<0.0001, while * represents a post-hoc analysis between the groups under the line, *p <0.05; ** p<0.01, *** p<0.001, **** p<0.0001. All data are presented as mean \pm S.E.M.

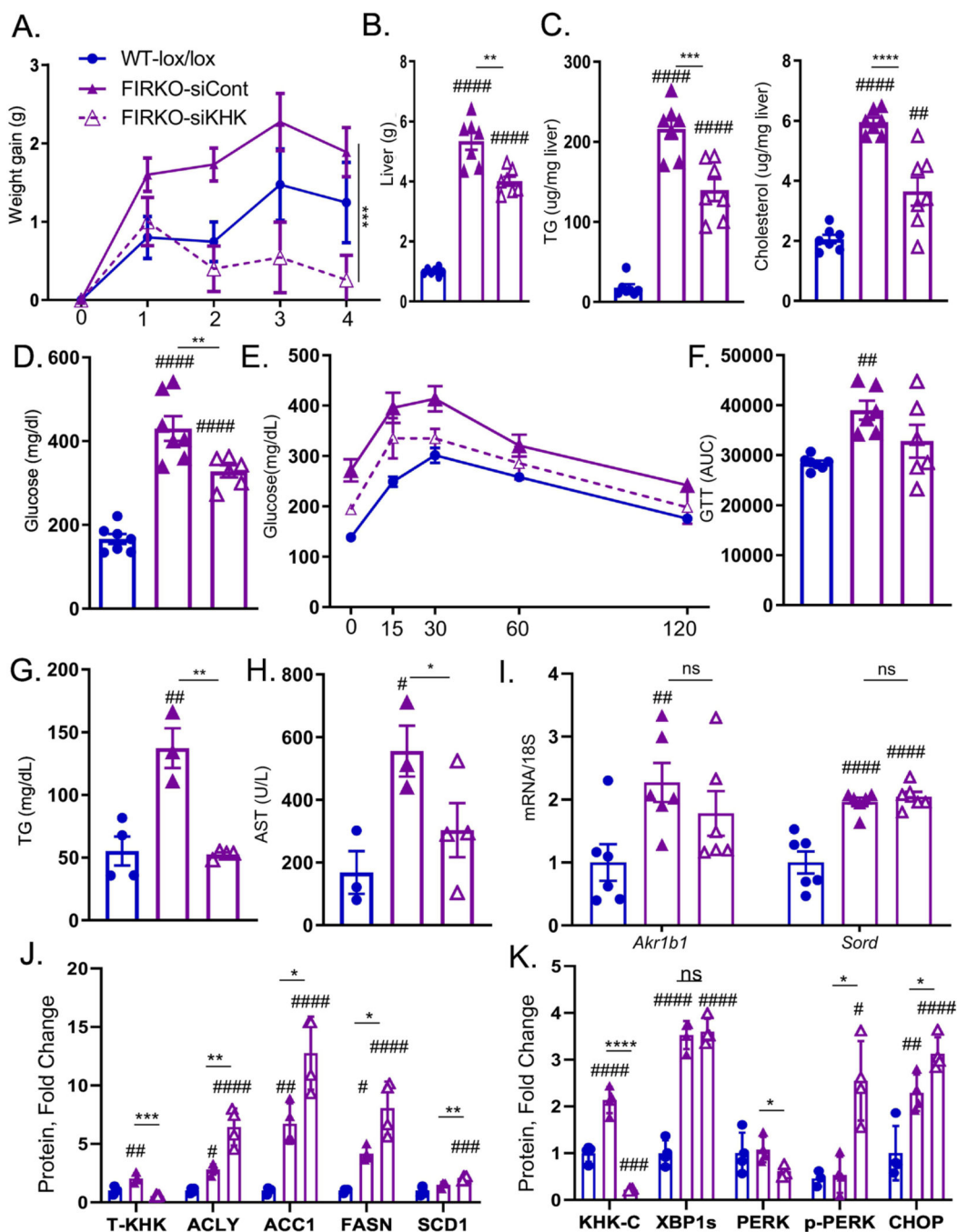


Figure 6. ER stress, but not lipogenesis, improves following T-KHK knockdown in lipodystrophic mice

Weight gain A) in 2-month-old, male, wild type, insulin receptor (IR) *Lox/Lox*, Adiponectin Cre negative (WT-*lox/lox*) littermates, as well as lipodystrophic, IR *Lox/Lox*, Adiponectin Cre positive, luciferase control injected (FIRKO-siCont) or KHK siRNA injected (FIRKO-siKHK) mice for four weeks, n=6–8 mice per group. B) Liver weight, hepatic C) triglycerides (TG) and cholesterol levels in these mice. Random fed D) blood glucose obtained at sacrifice, n=6–8 mice per group. E) Glucose tolerance test (GTT) in overnight fasted mice performed after 2 weeks following siRNA injection and F) area under curve

(AUC) from GTT analysis. Serum G) TG and H) aspartate aminotransferase (AST) at sacrifice. Hepatic mRNA expression of I) genes regulating endogenous fructose production (*Akr1b1*, *Sord*). Western blot quantification of KHK in the liver and proteins mediating J) *de novo* lipogenesis (ACLY, ACC1, FASN, SCD1) and K) ER stress (KHK-C, XBP1, PERK, CHOP) pathways. Sample number for WB is n=4 and for mRNA n=6 mice. Statistically significant results are marked with # using one-way ANOVA analysis, with Dunnett's multiple comparisons test to the Chow group, # p<0.05; ## p<0.01; ### p<0.001; #### p<0.0001, while * represents a post-hoc analysis between the groups under the line, *p <0.05; ** p<0.01, *** p<0.001, **** p<0.0001. All data are presented as mean \pm S.E.M.

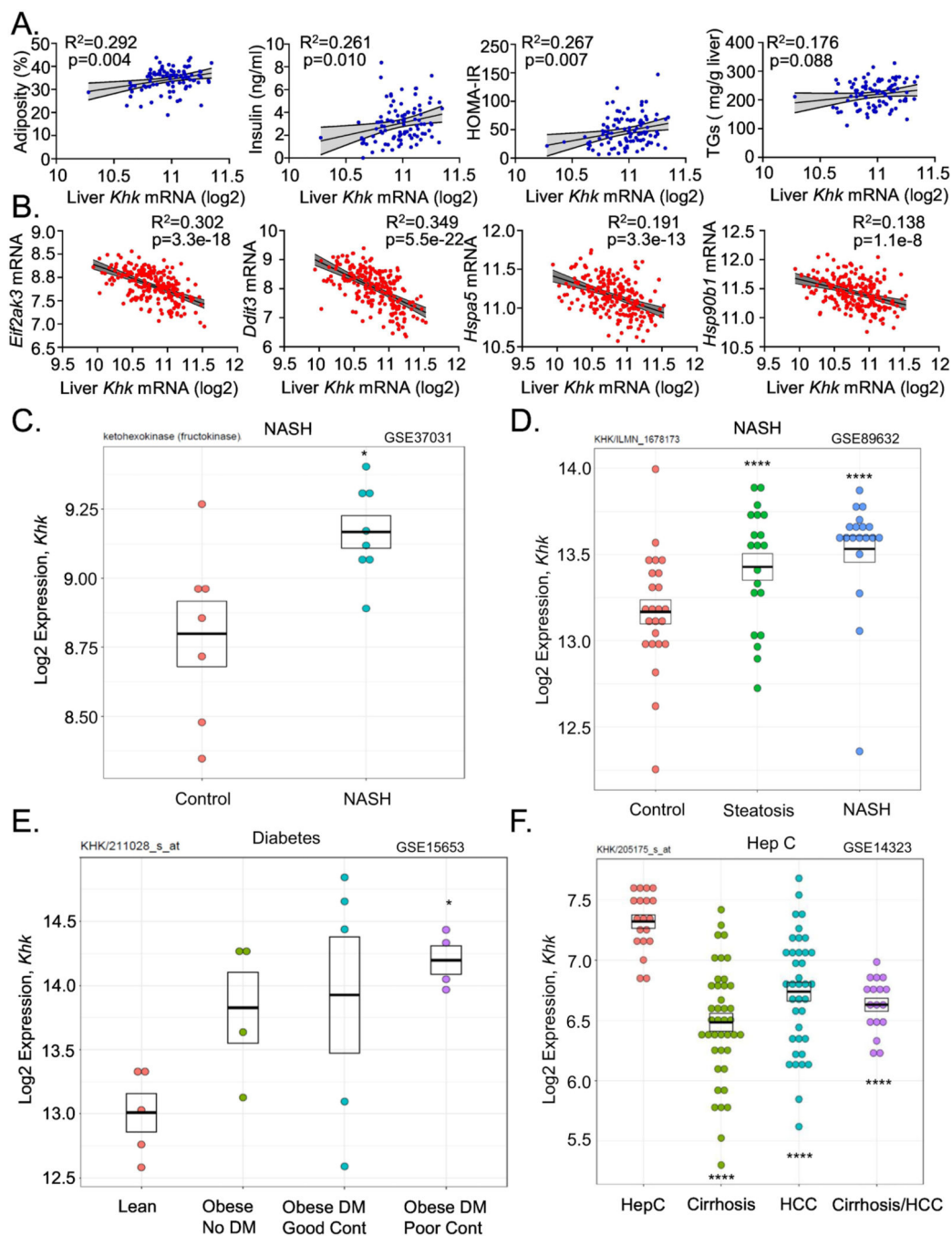


Figure 7. Hepatic ketohexokinase expression correlates positively with NAFLD and its risk-factors in mice and humans.

The correlation between A) hepatic *Khk* expression and percent adiposity, serum insulin, HOMA-IR measure of insulin resistance and liver triglycerides (TG) in over 100 inbred strains of male (blue circles) male mice from Hybrid Mouse Diversity Panel. The correlation between B) hepatic *Khk* expression and PERK arm of ER stress (*Eif2ak3*, *Ddit3*, *Hspa5*, *Hsp90b1*). The correlation was determined by Pearson correlation coefficient using GraphPad Prism 8. Hepatic KHK expression in patients with C-D) NAFLD and NASH, as well as in patients with E) diabetes and F) hepatitis C infection. Human data were randomly

searched and accessed from the studies that have deposited their data in a publicly available repository.

Author Manuscript

Author Manuscript

Author Manuscript

Author Manuscript