



# MESENCHYMAL STEM CELL THERAPY IN CATS

## Current knowledge and future potential

Jessica M Quimby and Dori L Borjesson



**Practical relevance:** Stem cell therapy is an innovative field of scientific investigation with tremendous potential for clinical application in veterinary medicine. Based on the known desirable immunomodulatory properties of mesenchymal stem cells, this therapy holds promise for the treatment of a variety of inflammatory diseases in cats.

**Aims:** This review details our current understanding of feline stem cell biology and proposed mechanism of action. Studies performed in feline clinical trials for diseases including gingivostomatitis, chronic enteropathy, asthma and kidney disease are summarized, with the goal of providing an overview of the current status of this treatment modality and its potential for the future.

MSCs have been evaluated as therapies for a number of inflammatory, degenerative and immune-mediated diseases, including feline chronic gingivostomatitis, acute and chronic kidney disease, enteropathies and asthma.

### Emergence of a new therapeutic strategy

Feline mesenchymal stem/stromal cells (MSCs) were first isolated and characterized from bone marrow (bMSCs) in 2002,<sup>1</sup> and later readily expanded from fat,<sup>2</sup> and fetal fluids and amniotic membranes.<sup>3</sup> Currently, adipose-derived MSCs (aMSCs) are most commonly used in clinical applications due to ease of attainment and their superior proliferative ability.<sup>2</sup> Feline MSCs meet the minimal defining criteria for multipotent stem cells as published over a decade ago<sup>4</sup> and ongoing research confirms that they also have similar immunomodulatory potency as more recently defined for human MSCs.<sup>5,6</sup> In addition to culture-expanded MSCs, regenerative medicine therapies include commercially available patient-side therapies such as platelet-rich plasma, bone marrow concentrate and the stromal vascular fraction (SVF) of fat.

In cats, published data are focused exclusively on the use of culture-expanded MSCs. SVF has the advantage of a fast turnaround time; however, the product is heterogeneous and includes only small numbers of stem cells relative to a culture-expanded population of aMSCs. Thus, in this review, we discuss the biology, immunology and clinical application of culture-expanded MSCs in cats.

Currently, adipose-derived MSCs are most commonly used in clinical applications due to ease of attainment and their superior proliferative ability.



JFMS Premier Reviews are invited state-of-the-art review papers on key issues in feline medicine and surgery. Written by expert international authors, these reviews are made freely available to maximise their impact.

#### Jessica M Quimby

DVM, PhD, DACVIM Internal Medicine\*  
The Ohio State University, Department of Veterinary  
Clinical Sciences, Columbus, OH 43210, USA

#### Dori L Borjesson

DVM, MPVM, PhD, ACVP (DACVP) (clinical pathology)  
University of California–Davis, Veterinary Institute  
for Regenerative Cures, and Department  
of Pathology, Microbiology and Immunology,  
Davis, CA 95616, USA

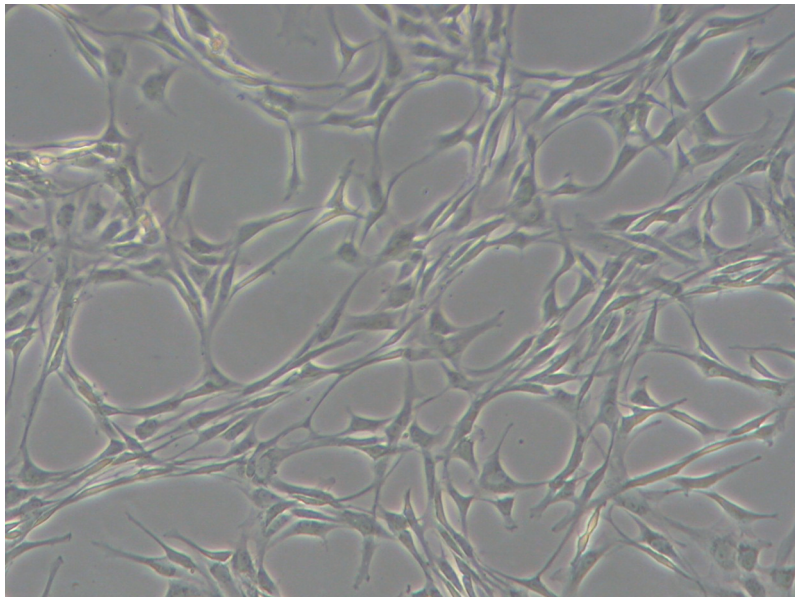
\*Corresponding author: quimby.19@osu.edu



## Feline MSC biology and immunology

Like all MSCs, feline MSCs have a fibroblast morphology in culture (Figure 1) and they express CD44 and CD105, and variably express CD90 on their surface.<sup>1,2,6</sup> MSCs do not express leukocyte antigens (CD18, CD4) or major histocompatibility complex (MHC) II.<sup>1,2,6</sup> Functionally in vitro, feline MSCs undergo trilineage differentiation, inhibit activated lymphocyte proliferation, and secrete a variety of mediators capable of modulating immune cell function.<sup>6,7</sup>

Feline MSCs are similar to simian MSCs in that 20–50% of feline MSC lines can be infected by a foamy virus.<sup>8</sup> Feline foamy virus (FFV) is a member of the Retroviridae family, is present in 20–80% of cats and is not associated with a clinical disorder.<sup>9,10</sup> FFV replication in cell lines is associated with syncytial cell formation, decreased proliferation rate and, finally, cell death.<sup>11</sup> MSC lines derived from specific pathogen-free (SPF) cats do not appear to be infected with FFV and may be a source of allogeneic MSCs for clinical application. FFV infection of MSC lines may hinder large-scale expansion of autologous MSCs for therapeutic use in feline patients.<sup>8</sup>



**Figure 1** Feline mesenchymal stem cells (MSCs) in culture are plastic-adherent and display a typical fibroblast-like appearance

### MSC mechanism of action

MSCs are thought to assist in tissue regeneration and repair through a multitude of mechanisms that include cell–cell contact, mediator secretion, production of extracellular vesicles (exosomes) and even the formation of membrane nanotubes that can transfer trophic factors (including mRNAs and miRNAs) and mitochondria to repair injured cells.<sup>12–15</sup> They secrete bioactive factors that enhance angiogenesis, reduce inflammation and modulate the immune system. In organ damage, MSCs are thought to inhibit fibrosis and recruit local stem cells, stimulating their survival, proliferation and differentiation. MSCs from all species described to date variably interact with cells of the innate and adaptive immune system, including T and B lymphocytes, natural killer (NK) cells, neutrophils, monocytes/macrophages and dendritic cells.<sup>12,16,17</sup>

### MSCs assist in tissue regeneration and repair through multiple mechanisms.

Feline MSCs largely mimic the immunomodulatory phenotype described for human, equine and canine MSCs – with a few notable differences. Numerous groups have demonstrated that feline MSCs inhibit activated T lymphocyte proliferation.<sup>6,7,18,19</sup> Feline MSCs also reduce neutrophil production of reactive oxygen species.<sup>20</sup> The interaction of feline MSCs with other cells of the innate and humoral immune systems, including dendritic cells, monocytes, eosinophils, NK cells and B lymphocytes, and the mechanisms involved have not yet been detailed but will be important areas for future studies.

To understand how feline MSCs respond to inflammatory stimuli, they have been incubated with allogeneic peripheral blood mononuclear cells (PBMCs) or stimulated with lectins (concanavalin A), interferon gamma (IFN $\gamma$ ), and/or tumor necrosis factor alpha (TNF $\alpha$ ).<sup>6,7</sup> In response to these stimuli, MSCs upregulate gene expression of immunomodulatory mediators including indoleamine 2,3-dioxygenase (IDO)1, programmed death ligand-1, interleukin (IL)-6, cyclooxygenase 2 and hepatocyte growth factor.<sup>7</sup> They also secrete IDO, prostaglandin E2 (PGE2), IL-6, vascular endothelial growth factor, IL-8 and transforming growth factor beta.<sup>6,7</sup> The inhibition of lymphocyte proliferation depends on both soluble mediators and direct contact between the aMSCs and lymphocytes; however, the actual ligands and mediators have not been determined.<sup>6</sup> In other species, IDO and PGE2 have been implicated in the initiation of lymphocyte cell cycle arrest and/or lymphocyte apoptosis.<sup>21–23</sup> Feline aMSCs potentially inhibit the pro-inflammatory cytokine TNF $\alpha$  in vitro; however, their interaction with IFN $\gamma$  is more complicated.<sup>6</sup> Feline aMSCs are able to inhibit lymphocyte proliferation and secrete immunomodulatory mediators in the presence of high concentrations of IFN $\gamma$ .<sup>6</sup>

The transcriptome of three feline aMSC lines has been defined and functional analysis of the most highly expressed genes revealed processes relating to: 1) the regulation of apoptosis; 2) cell adhesion; 3) response to oxidative stress; and 4) regulation of cell differentiation.<sup>6</sup> Together these data suggest that feline MSCs are highly similar in their functional and, notably, immunomodulatory capacities to MSCs of other species.

## MSC clinical trials for feline patients: general considerations

In developing MSC clinical trials, there are a number of factors that need to be defined and standardized, including cell type (allogeneic or autologous), cell formulation (fresh or frozen, with or without additives), cell dose, route of cell administration and number of doses given. In cats, clinical trials have been performed with both autologous and allogeneic MSCs, with varying efficacy.

✦ **Cell type** Data from clinical trials in cats with FCGS suggest that autologous MSCs may be more effective and result in more rapid clinical cure than the administration of allogeneic MSCs.<sup>18,35</sup> However, these data represent relatively low numbers of cats (seven cats for each group) and no attempts were made to optimize allogeneic cell efficacy (ie, increasing cell dose or number of doses). As described for most species, MSC numbers may decline with age, leading to an increased lag time to culture expand these cells for therapeutic purposes in geriatric

cats.<sup>19</sup> Concurrent disease states, such as uremia, may have an effect on the therapeutic capability of autologous MSCs, as previous studies have demonstrated that MSCs obtained from uremic rats exhibit reduced proliferation in culture, premature senescence and decreased capacity to induce angiogenesis.<sup>36,37</sup>

For allogeneic cell use, cells derived from tissues from young, 'donor-qualified' (full infectious disease testing) or SPF cats will be necessary for US Food and Drug Administration-compliant clinical trials.

Continued on page 211

## Clinical applications of MSCs in feline disease

Given the desirable immunomodulatory properties of MSCs, this therapy has potential for treatment of a variety of inflammatory diseases. In cats, MSCs have been evaluated as therapies for a number of inflammatory, degenerative and immune-mediated diseases including feline chronic gingivostomatitis (FCGS),<sup>18</sup> acute and chronic kidney disease

(CKD),<sup>24–28</sup> enteropathies<sup>29</sup> and asthma.<sup>30,31</sup> An overview of clinical studies is provided in Table 1. MSCs could also be explored for feline osteoarthritis and cardiomyopathy, among other diseases.<sup>32,33</sup> Additionally, many of these naturally occurring diseases have translational potential for similar diseases in people, including oral inflammatory diseases, chronic pancreatitis, idiopathic cystitis, CKD, inflammatory bowel disease, osteoarthritis, cardiomyopathy and asthma.<sup>32,34</sup>

**Table 1** Clinical applications of mesenchymal stem cells in feline disease

Disease	Study type	MSC source	Interventions	Outcome	Reference
Gingivostomatitis	Open-label, baseline-controlled clinical trial	Autologous adipose-derived	Two doses IV aMSCs 30 days apart (7 cats)	Complete remission (3 cats), substantial improvement (2 cats), no response (2 cats)	Arzi et al <sup>18</sup>
Gingivostomatitis	Open-label, baseline-controlled clinical trial	Allogeneic adipose-derived	Two doses IV aMSCs 30 days apart (7 cats)	Complete remission (2 cats), substantial improvement (2 cats), no response (3 cats)	Arzi et al <sup>8</sup>
Acute experimental asthma	Randomized, placebo-controlled study	Allogeneic adipose-derived	Five doses IV aMSCs (4 cats), with 14, 14, 14, 70 and 30 days between each respective dose, or placebo (2 cats)	Decrease in airway eosinophilia, diminished airway hyper-responsiveness, decreased airway remodeling	Trzil et al <sup>31</sup>
Chronic experimental asthma	Randomized, placebo-controlled study	Allogeneic adipose-derived	Six doses IV aMSCs (5 cats) 14 days apart or placebo (4 cats)	Decreased airway remodeling	Trzil et al <sup>30</sup>
Chronic enteropathy	Owner-blinded, randomized, placebo-controlled clinical trial	Allogeneic adipose-derived	Two doses IV aMSCs 14 days apart (7 cats) or placebo (4 cats)	Improved clinical signs in 5/7 aMSC-treated cats and 0/4 placebo cats	Webb and Webb <sup>29</sup>
CKD	Open-label, baseline-controlled clinical trial	Autologous adipose-derived or bone marrow-derived	Single unilateral intrarenal injection of aMSCs (3 cats) or bMSCs (3 cats)	Mild decrease in serum creatinine and increase in GFR in 2 cats that received aMSCs	Quimby et al <sup>24</sup>
CKD	Three open-label, baseline-controlled, pilot clinical trials	Allogeneic adipose-derived	Three doses IV aMSCs 14 days apart (16 cats)	Mild decrease in serum creatinine in 7/15 cats (1 cat excluded due to medication non-compliance) and increase in GFR in 4/16 cats. Side effects included vomiting and increased respiratory rate	Quimby et al <sup>25</sup>
CKD	Randomized, placebo-controlled clinical trial	Allogeneic adipose-derived	Three doses IV aMSCs (4 cats) 14 days apart or placebo (3 cats)	No significant improvement in creatinine or GFR	Quimby et al <sup>26</sup>
Ischemic AKI	Randomized, placebo-controlled study	Allogeneic adipose-derived or bone marrow-derived	Single dose IV aMSCs (5 cats), bMSCs (5 cats) or fibroblasts (5 cats) 1 h after unilateral ischemia	No difference in percentage of cats with AKI	Rosselli et al <sup>27</sup>
CKD	Open-label, baseline-controlled clinical trial	Allogeneic amnion-derived	Two doses IV amnion-derived MSCs 21 days apart (9 cats)	Mild decrease in serum creatinine	Vidane et al <sup>28</sup>

IV = intravenous; MSC = mesenchymal stem cell; aMSCs = adipose-derived MSCs; bMSCs = bone marrow-derived MSCs; GFR = glomerular filtration rate; AKI = acute kidney injury; CKD = chronic kidney disease

## Continued from page 210

❖ **Cell formulation** Both fresh and frozen/thawed aliquots of MSCs have been administered to cats. To date, there are no studies that have directly compared the efficacy of fresh (initial culture or culture revived) vs frozen/thawed cells; however, all studies that have reported efficacy in naturally occurring disease have used fresh cells for administration.<sup>18,28,29,35</sup>

❖ **Cell dose** MSC dose has ranged from 1 million cells/cat to 25 million cells/cat (range <1 million cells/kg to >5 million cells/kg).<sup>18</sup> Effective cell doses for enteropathy and FCGS were 2–5 million cells/kg.<sup>18,29</sup> To determine if higher doses of MSCs could safely be given to cats, one of the authors (DB)

administered 50 million MSCs to SPF cats intravenously with no adverse effects (unpublished data).

❖ **Route of administration** MSCs have primarily been administered intravenously;<sup>18,26,29,31</sup> however, other routes of administration, including intraperitoneal,<sup>38</sup> intrarenal<sup>28</sup> and retroperitoneal,<sup>39</sup> have been described and are relatively safe. The ideal route of MSC administration will need to be determined for each disease individually and will increasingly be based on safety, feasibility, mechanism of action (ie, whether the cells act locally or systemically to modify disease) and cell tracking studies

## Feline chronic gingivostomatitis

FCGS is a severe, painful, inflammatory oral disease that is often refractory to treatment and is estimated to affect 0.7–12% of cats presenting to veterinary practices.<sup>40–42</sup> Clinical signs reflect oral discomfort, including inappetence, reduced grooming, weight loss and hypersalivation. FCGS can be debilitating and may result in euthanasia of severely affected cats. There is no cure and the current standard of care consists of full or near-full mouth tooth extraction and lifelong therapy with antibiotics, steroids and analgesics.<sup>42</sup> The pathogenesis of FCGS is complex and multifactorial, and may result from alterations in microbiota, loss of self-tolerance to antigens, alterations in innate immunity or underlying viral disease.<sup>43,44</sup> Histologically, lesions in cats are characterized by lymphocyte-rich inflammation with a predominance of effector T cells and B cells.<sup>40</sup>

Given the predominance of T cell activation in FCGS and the absence of a curative therapy, aMSCs have been utilized to treat FCGS in two clinical trials because of their potent ability to downregulate T cell activation. In both clinical

Therapy for FCGS, if efficacious, appears to be curative.



trials, FCGS cats that were refractory to full mouth tooth extraction were enrolled. In addition, these cats had no known concurrent diseases (eg, feline immunodeficiency virus/feline leukemia virus negative).<sup>18,35</sup> In each trial, seven FCGS cats received two intravenous (IV) injections of  $2 \times 10^7$  aMSCs 3–4 weeks apart. In the first trial, the seven cats received autologous aMSCs;<sup>18</sup> in the second trial, the seven cats received unmatched, allogeneic aMSCs from SPF donor cats.<sup>35</sup> The outcome of these published studies, as well as other clinical trials, is summarized in the box below.

Clinical trials are ongoing and have expanded to include a multicenter investigation with a crossover design to ensure that control cats are recruited. Ongoing work includes: 1) pursuing mechanism of action and biomarker studies (focused on immunomodulation, and blood and lymph node CD4 and CD8 T cells);<sup>6</sup> 2) refining clinical trial parameters to increase the therapeutic efficacy of aMSC infusion; 3) determining whether aMSCs can be used prior to full mouth tooth extraction; and 4) enrolling cats with concurrent diseases to determine efficacy in a broader range of diseased cats.

## FCGS clinical trials – what to conclude

Overall, 35 cats with naturally occurring, refractory FCGS have been treated to date through clinical trials run at UC Davis. There have been no significant adverse events associated with aMSC infusion. The response to aMSC therapy has been remarkable (Figure 2).

Response rate for substantial improvement or complete cure after aMSC therapy was 64% (9/14 cats) for the two published studies described above, and the overall response rate is closer to 72% (unpublished data). No cats have regressed or relapsed after therapy



**Figure 2** Feline chronic gingivostomatitis (FCGS) before (a) and after (b) administration of allogeneic adipose-derived MSCs (aMSCs). This castrated adult male domestic shorthair cat had a 2 year history of FCGS that was treated with intermittent ciclosporin therapy. Full mouth tooth extractions were performed 1.5 years prior to aMSC therapy. The cat received two doses of allogeneic aMSCs and had substantial clinical improvement within 6 months of therapy. It continued to be in remission at the time of writing 1.5 years later. Courtesy of Dr Boaz Arzi

– so therapy, if efficacious, appears to be curative (some cats are >4 years out since aMSC infusion). Clinical cure is associated with histopathologic resolution of T and B cell inflammation. The data to date suggest that autologous therapy may be slightly more effective, especially for the most severely affected cats, and that improvement/cure occurs more quickly after autologous cell infusion than after allogeneic cell infusion.<sup>18,35</sup>



## Asthma

Feline asthma is a component of feline lower respiratory disease that is characterized by airway eosinophilia, airway hyper-responsiveness and remodeling. Clinical management to target inflammation and open airways consists of oral or inhaled corticosteroid and bronchodilator therapy. However, these therapies are associated with side effects and are typically lifelong, and may not result in a therapeutic response or prevent progression of disease.

The application of MSC therapy to this disease process would be ideal given the immunomodulatory capabilities demonstrated by MSCs and their passage through the lung when administered intravenously. In rodent models, improvement in airway eosinophilia, airway hyper-responsiveness and remodeling has been demonstrated following MSC therapy.<sup>30</sup> Two placebo-controlled pilot studies have evaluated aMSC therapy in cats in an experimental model of feline asthma; both involved sensitization to Bermuda grass allergen, which results in development of an asthmatic phenotype

including airway eosinophilia and airway hyper-responsiveness.<sup>30,31</sup>

The first study involved administration of allogeneic aMSCs to cats in which asthma had been induced a relatively short time period before treatment.<sup>31</sup> A total of five IV injections of allogeneic aMSCs were administered (four cats) or saline placebo (two cats). Due to difficulties with expansion of cells to obtain adequate quantities for the study, the number of cells administered varied between  $2 \times 10^6$  and  $1 \times 10^7$  per cat; initially aMSCs were from cryopreservation and subsequently they were cultured fresh from cryopreserved adipose.

The second study assessed the effects of aMSC infusion on cats that had chronic experimentally induced asthma (induced 9 months prior to study initiation).<sup>30</sup> Cats were randomized to receive a total of six IV injections of fresh allogeneic aMSCs cultured from cryopreserved adipose (five cats) at a dose of  $3.6 \times 10^6$  to  $2.5 \times 10^7$  per cat (average  $1.4 \times 10^7$  per cat) or saline placebo (four cats).

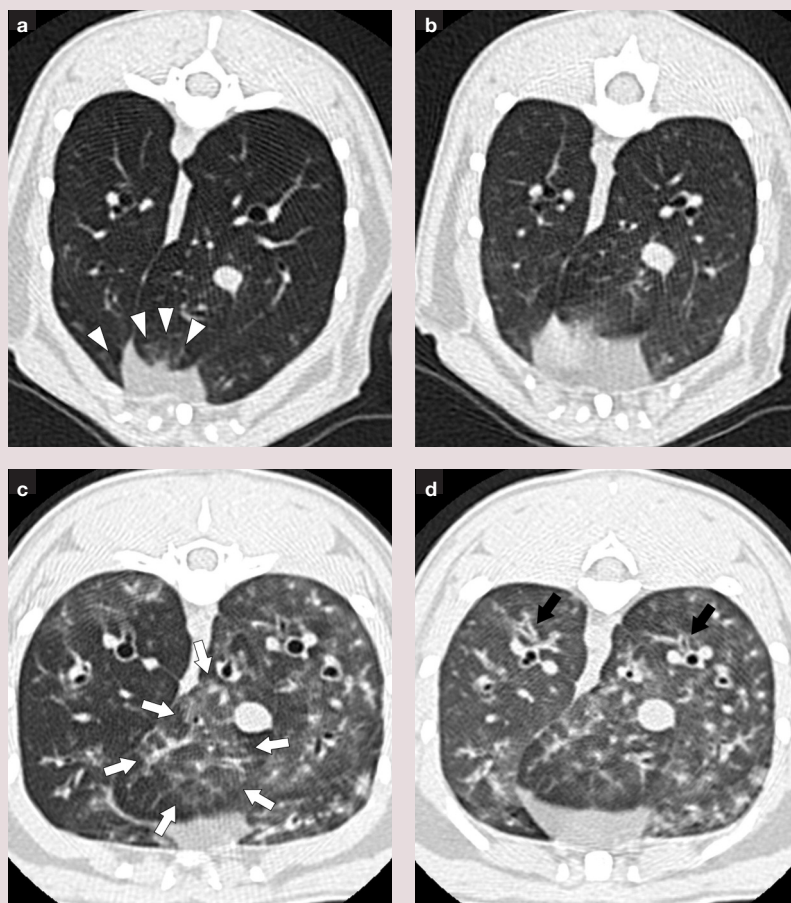
The results of these two clinical trials are described in the box below.

### Asthma clinical trials – what to conclude

**Acute induced asthma** Cats receiving aMSCs experienced a decrease in airway eosinophilia and diminished airway hyper-responsiveness at day 133 compared with placebo. Airway remodeling, as represented by lung attenuation and bronchial wall thickening scores assessed via CT imaging, was significantly decreased in aMSC-treated cats at 9 months (Figure 3).<sup>31</sup>

**Chronic induced asthma** In this chronic model, cats that received aMSCs did not experience a decrease in airway eosinophilia and diminished airway hyper-responsiveness compared with placebo. However, significantly reduced lung attenuation and bronchial wall thickening scores, assessed via CT imaging, were seen at 8 months, once again indicating a positive effect on airway remodeling.

**aMSC therapy has been shown to have a positive effect on airway remodeling in two placebo-controlled pilot studies using experimental models of feline asthma.**



**Figure 3** Thin section CT images in cats with experimentally induced asthma, where white arrows and arrowheads show areas of increased lung attenuation and black arrows indicate areas of bronchial wall thickening: (a) MSC-treated cat during inhalation; (b) MSC-treated cat during exhalation; (c) untreated cat during inhalation; (d) untreated cat during exhalation.<sup>31</sup> Airway remodeling, as represented by lung attenuation and bronchial wall thickening scores, was significantly decreased in MSC-treated cats at 9 months after five intravenous injections of allogeneic adipose-derived MSCs

### Chronic enteropathy

Chronic enteropathies such as inflammatory bowel disease are common in cats and likely result from alterations in gastrointestinal mucosal immunity and loss of tolerance to intestinal antigens.<sup>29,45</sup> Clinical management is typically lifelong and includes dietary therapy and corticosteroid administration. Patient and/or owner compliance can be a concern with chronic therapies and not all cats experience a treatment response. Therefore, alternative approaches are needed.

The efficacy of allogeneic aMSCs for the treatment of cats with clinical signs of chronic enteropathy (diarrhea and/or vomiting for >3 months) was assessed in a randomized, single-blinded, placebo-controlled clinical trial.<sup>29</sup> Two IV injections of  $2 \times 10^6$ /kg aMSCs fresh cultured from cryopreserved adipose (seven cats) or saline placebo (four cats) were administered 2 weeks apart and cats were followed for 1–2 months. Owners answered a questionnaire at the beginning and end of the study about medications, supplements, diet, appetite and clinical signs, including quantification of the frequency and consistency of diarrhea, and the presence and frequency of vomiting. A Texas A&M gastrointestinal panel (feline pancreatic lipase immunoreactivity, feline trypsin-like immunoreactivity, folate and cobalamin) was performed at the beginning of the study and 2 weeks after the second injection. No other changes in diet or medications were allowed during the study period. Results of the trial are reported in the box below.

#### Chronic enteropathy clinical trials – what to conclude

Two weeks after the second aMSC injection, no improvement was noted in the aMSC-treated group; however, improved clinical signs were observed by owners in 5/7 aMSC-treated cats at the 1–2 month follow-up. No improvement was seen in cats receiving the saline placebo at the 1–2 month follow-up. It was concluded that aMSC therapy appeared well tolerated and potentially effective for palliation of chronic enteropathy in cats, and additional study is necessary and warranted.



**Therapy with aMSCs has appeared well tolerated and potentially effective for palliation of chronic enteropathy in cats, and additional study is warranted.**

### Kidney disease

A series of pilot studies assessing the safety and efficacy of administration of MSCs for treatment of cats with CKD has been conducted.<sup>24–26</sup>

The first MSC study in cats with CKD was designed to assess the safety and feasibility of autologous intrarenal MSC therapy.<sup>24</sup> Six cats (two healthy, four with CKD) received a single unilateral intrarenal injection of autologous bMSCs or aMSCs via ultrasound guidance. Two IRIS stage 3 CKD cats that received aMSCs experienced modest improvement in glomerular filtration rate (GFR) and a mild decrease in serum creatinine concentration. Intrarenal injection of MSCs did not induce immediate or longer term adverse effects but it was concluded that the number of sedations and interventions required to implement this approach made it unattractive for clinical application. In the course of conducting this study it was also determined that expanding sufficient numbers of autologous MSCs in culture from elderly diseased patients was very difficult and time-consuming. A more recent study in which one healthy cat received an intrarenal injection of amniotic-derived allogeneic MSCs documented hematuria and significant stress as a result of the procedure, and this study also determined the technique not to be clinically feasible.<sup>28</sup>

The feasibility of IV administration of allogeneic aMSCs to cats with CKD has also been investigated.<sup>25</sup> Stable CKD cats with no concurrent illness were enrolled in a series of pilot studies and received every 2 weeks an IV infusion of allogeneic aMSCs collected and cryopreserved from healthy young SPF cats. Six cats in pilot 1 received  $2 \times 10^6$  cryopreserved aMSCs per infusion, five cats in pilot 2 received  $4 \times 10^6$  cryopreserved aMSCs per infusion, and five cats in pilot 3 received  $4 \times 10^6$  aMSCs cultured from cryopreserved adipose. Cats in pilot 1 had few adverse effects from the aMSC infusions and there was a statistically significant decrease in serum creatinine concentrations during the study period. However, the degree of decrease was judged not to represent a clinically relevant improvement.

Notably, adverse effects of aMSC infusion were observed in the majority of cats enrolled in the second pilot study following treatment with MSCs taken directly from cryopreservation. Vomiting occurred in 2/5 cats during infusion, and increased respiratory rate and effort was noted in 4/5 cats. In contrast, cats in pilot study 3 that received aMSCs cultured from cryopreserved adipose did not experience any adverse side effects. Serum creatinine concentrations, urinary cytokines and GFR did not change significantly in cats in

these latter two studies. Based on the accumulated results of the three pilot studies, it appeared that use of higher doses of aMSCs taken directly from cryopreservation was the source of the treatment-related adverse effects. The most likely explanation for this reaction is an instant blood-mediated inflammatory reaction, which results in clumping of the cells as they contact the blood and potential subsequent micropulmonary thromboembolism.<sup>46</sup>

A placebo-controlled, blinded, one-way, crossover clinical study assessing the efficacy of allogeneic MSCs expanded from cryopreserved adipose with repeated administrations has also been performed.<sup>26</sup> Four cats were randomized to receive  $2 \times 10^6$  aMSCs/kg intravenously at 2, 4 and 6 weeks and three cats were randomized to receive saline placebo. While administration of aMSCs was not associated with adverse effects, significant improvement in renal function (as determined by serum creatinine and GFR by nuclear scintigraphy) was not observed in the weeks following administration.

The IV administration of allogeneic MSCs derived from amniotic membrane has been assessed in nine cats with CKD that received two injections of  $2 \times 10^6$  MSCs 21 days apart.<sup>28</sup> One cat experienced vomiting during the first administration, but otherwise the MSCs were well tolerated. A statistically significant but mild decrease in serum creatinine was seen, with stable body weight over the course of the study. Mild improvements in proteinuria and urine specific gravity were also seen. However, studies with a control group are necessary to determine if changes are attributable to MSC therapy or normal variation in values.

Application of aMSCs for acute kidney injury (AKI) in an ischemic kidney model has also been investigated.<sup>27</sup> Adult research cats underwent unilateral renal ischemia for 60 mins. One hour after reperfusion,  $4 \times 10^6$  of one of the following cell types were administered via jugular catheter: aMSCs (five cats), bMSCs (five cats) or fibroblasts (five cats). Three historical control cats that had previously undergone ischemia as part of this model were used for comparison. No difference in the percentage of cats that developed AKI and no difference in urine specific gravity, proteinuria, GFR or histopathology were noted as a result of MSC administration in this model.<sup>27</sup>



**At this time, MSC therapy for feline CKD should be considered an experimental and unproven therapy.**

### Kidney disease clinical trials – what to conclude

None of the studies conducted in cats with CKD have been able to replicate the efficacy of MSC treatment reported in rodent models of experimentally induced CKD or AKI.<sup>47–50</sup> One explanation for differing results of MSC therapy in cats with CKD is that the chronic nature of feline CKD makes these patients fundamentally different from rodents with experimentally induced disease. In the majority of rodent studies, the MSCs are administered a short period of time after surgical manipulation (typically 5/6 nephrectomy). Most cats with CKD have a history of a progressive decline in renal function over several years. Although rodent studies illustrate the potential of MSC treatment for kidney disease, results of these models should be interpreted with caution. At this time, MSC therapy for CKD in cats should be considered an experimental and unproven therapy.

### KEY POINTS

- ✦ Although MSC therapy potentially has great applicability to feline disease, there are still many questions to be answered regarding the logistics of its use.
- ✦ The optimal route of MSC administration, the ideal source of MSCs (allogeneic vs autologous; culture-expanded vs SVF) and the impact of tissue donor status (eg, age, disease status, sex) on MSC function remain to be determined.
- ✦ Studies are currently under way investigating many of these aspects and additional information is eagerly awaited.



### Conflict of interest

The authors declared no potential conflicts of interest with respect to the research, authorship, and/or publication of this article.

### Funding

Funding for MSC studies performed by the authors was provided by the Winn Feline Foundation; the Morris Animal Foundation; Frankie's Fund for Feline Stem Cell Therapy; and by an NIH Grant (1R21DE024711-01).

## References

- Martin DR, Cox NR, Hathcock TL, et al. **Isolation and characterization of multipotential mesenchymal stem cells from feline bone marrow.** *Exp Hematol* 2002; 30: 879–886.
- Webb TL, Quimby JM and Dow SW. **In vitro comparison of feline bone marrow-derived and adipose tissue-derived mesenchymal stem cells.** *J Feline Med Surg* 2012; 14: 165–168.
- Iacono E, Cunto M, Zambelli D, et al. **Could fetal fluid and membranes be an alternative source for mesenchymal stem cells (MSCs) in the feline species? A preliminary study.** *Vet Res Commun* 2012; 36: 107–118.
- Dominici M, Le Blanc K, Mueller I, et al. **Minimal criteria for defining multipotent mesenchymal stromal cells. The International Society for Cellular Therapy position statement.** *Cytotherapy* 2006; 8: 315–317.
- Galipeau J, Krampera M, Barrett J, et al. **International Society for Cellular Therapy perspective on immune functional assays for mesenchymal stromal cells as potency release criterion for advanced phase clinical trials.** *Cytotherapy* 2016; 18: 151–159.
- Clark KC, Fierro FA, Ko EM, et al. **Human and feline adipose-derived mesenchymal stem cells have comparable phenotype, immunomodulatory functions, and transcriptome.** *Stem Cell Res Ther* 2017; 8: 69.
- Parys M, Kruger JM and Yuzbasiyan-Gurkan V. **Evaluation of immunomodulatory properties of feline mesenchymal stem cells.** *Stem Cells Dev* 2017; 26: 776–785.
- Arzi B, Kol A, Murphy B, et al. **Feline foamy virus adversely affects feline mesenchymal stem cell culture and expansion: implications for animal model development.** *Stem Cells Dev* 2015; 24: 814–823.
- Bleiholder A, Muhle M, Hechler T, et al. **Pattern of seroreactivity against feline foamy virus proteins in domestic cats from Germany.** *Vet Immunol Immunopathol* 2011; 143: 292–300.
- Winkler IG, Lochelt M and Flower RL. **Epidemiology of feline foamy virus and feline immunodeficiency virus infections in domestic and feral cats: a seroepidemiological study.** *J Clin Microbiol* 1999; 37: 2848–2851.
- Ikeda Y, Itagaki S, Tsutsui S, et al. **Replication of feline syncytial virus in feline T-lymphoblastoid cells and induction of apoptosis in the cells.** *Microbiol Immunol* 1997; 41: 431–435.
- Carrade DD and Borjesson DL. **Immunomodulation by mesenchymal stem cells in veterinary species.** *Comp Med* 2013; 63: 207–217.
- Fu Y, Karbaat L, Wu L, et al. **Trophic effects of mesenchymal stem cells in tissue regeneration.** *Tissue Eng Part B Rev* 2017; 23: 515–528.
- Glenn JD and Whartenby KA. **Mesenchymal stem cells: emerging mechanisms of immunomodulation and therapy.** *World J Stem Cells* 2014; 6: 526–539.
- Lai RC, Yeo RW and Lim SK. **Mesenchymal stem cell exosomes.** *Semin Cell Dev Biol* 2015; 40: 82–88.
- Ben-Ami E, Berrih-Aknin S and Miller A. **Mesenchymal stem cells as an immunomodulatory therapeutic strategy for autoimmune diseases.** *Autoimmun Rev* 2011; 10: 410–415.
- Le Blanc K and Davies LC. **Mesenchymal stromal cells and the innate immune response.** *Immunol Lett* 2015; 168: 140–146.
- Arzi B, Mills-Ko E, Verstraete FJ, et al. **Therapeutic efficacy of fresh, autologous mesenchymal stem cells for severe refractory gingivostomatitis in cats.** *Stem Cells Transl Med* 2016; 5: 75–86.
- Zajic LB, Webb TL, Webb P, et al. **Comparison of proliferative and immunomodulatory potential of adipose-derived mesenchymal stem cells from young and geriatric cats.** *J Feline Med Surg* 2017; 19: 1096–1102.
- Mumaw JL, Schmiedt CW, Breidling S, et al. **Feline mesenchymal stem cells and supernatant inhibit reactive oxygen species production in cultured feline neutrophils.** *Res Vet Sci* 2015; 103: 60–69.
- Carrade DD, Lame MW, Kent MS, et al. **Comparative analysis of the immunomodulatory properties of equine adult-derived mesenchymal stem cells.** *Cell Med* 2012; 4: 1–11.
- Carrade DD, Wood JA, Granick JL, et al. **Equine mesenchymal stem cells inhibit T cell proliferation through different mechanisms depending on tissue source.** *Stem Cells Dev* 2014; 23: 1258–1265.
- Meisel R, Zibert A, Laryea M, et al. **Human bone marrow stromal cells inhibit allogeneic T-cell responses by indoleamine 2,3-dioxygenase-mediated tryptophan degradation.** *Blood* 2004; 103: 4619–4621.
- Quimby JM, Webb TL, Gibbons DS, et al. **Evaluation of intrarenal mesenchymal stem cell injection for treatment of chronic kidney disease in cats: a pilot study.** *J Feline Med Surg* 2011; 13: 418–426.
- Quimby JM, Webb TL, Habenicht LM, et al. **Safety and efficacy of intravenous infusion of allogeneic cryopreserved mesenchymal stem cells for treatment of chronic kidney disease in cats: results of three sequential pilot studies.** *Stem Cell Res Ther* 2013; 4: 48.
- Quimby JM, Webb TL, Randall E, et al. **Assessment of intravenous adipose-derived allogeneic mesenchymal stem cells for the treatment of feline chronic kidney disease: a randomized, placebo-controlled clinical trial in eight cats.** *J Feline Med Surg* 2016; 18: 165–171.
- Rosselli DD, Mumaw JL, Dickerson V, et al. **Efficacy of allogeneic mesenchymal stem cell administration in a model of acute ischemic kidney injury in cats.** *Res Vet Sci* 2016; 108: 18–24.



- 28 Vidane AS, Pinheiro AO, Casals JB, et al. **Transplantation of amniotic membrane-derived multipotent cells ameliorates and delays the progression of chronic kidney disease in cats.** *Reprod Domest Anim* 2017; 52 Suppl 2: 316–326.
- 29 Webb TL and Webb CB. **Stem cell therapy in cats with chronic enteropathy: a proof-of-concept study.** *J Feline Med Surg* 2015; 17: 901–908.
- 30 Trzil JE, Masseau I, Webb TL, et al. **Long-term evaluation of mesenchymal stem cell therapy in a feline model of chronic allergic asthma.** *Clin Exp Allergy* 2014; 44: 1546–1557.
- 31 Trzil JE, Masseau I, Webb TL, et al. **Intravenous adipose-derived mesenchymal stem cell therapy for the treatment of feline asthma: a pilot study.** *J Feline Med Surg* 2016; 18: 981–990.
- 32 Hoffman AM and Dow SW. **Concise review: stem cell trials using companion animal disease models.** *Stem Cells* 2016; 34: 1709–1729.
- 33 Taghavi S, Sharp TE, 3rd, Duran JM, et al. **Autologous c-Kit<sup>+</sup> mesenchymal stem cell injections provide superior therapeutic benefit as compared to c-Kit<sup>+</sup> cardiac-derived stem cells in a feline model of isoproterenol-induced cardiomyopathy.** *Clin Transl Sci* 2015; 8: 425–431.
- 34 Kol A, Arzi B, Athanasiou KA, et al. **Companion animals: translational scientist's new best friends.** *Sci Transl Med* 2015; 7: 308ps21.
- 35 Arzi B, Clark KC, Sundaram A, et al. **Therapeutic efficacy of fresh, allogeneic mesenchymal stem cells for severe refractory feline chronic gingivostomatitis.** *Stem Cells Transl Med* 2017; 6: 1710–1722.
- 36 Klinkhammer BM, Kramann R, Mallau M, et al. **Mesenchymal stem cells from rats with chronic kidney disease exhibit premature senescence and loss of regenerative potential.** *PLoS One* 2014; 9: e92115.
- 37 Idziak M, Pedzisz P, Burdzinska A, et al. **Uremic toxins impair human bone marrow-derived mesenchymal stem cells functionality in vitro.** *Exp Toxicol Pathol* 2014; 66: 187–194.
- 38 Parys M, Nelson N, Koehl K, et al. **Safety of intraperitoneal injection of adipose tissue-derived autologous mesenchymal stem cells in cats.** *J Vet Intern Med* 2016; 30: 157–163.
- 39 Quimby JM, Webb TL, Randall E, et al. **Retroperitoneal delivery of mesenchymal stem cells for the treatment of feline chronic kidney disease.** *J Vet Intern Med* 2015; 29: 1216.
- 40 Harley R, Gruffydd-Jones TJ and Day MJ. **Immunohistochemical characterization of oral mucosal lesions in cats with chronic gingivostomatitis.** *J Comp Pathol* 2011; 144: 239–250.
- 41 Healey KA, Dawson S, Burrow R, et al. **Prevalence of feline chronic gingivostomatitis in first opinion veterinary practice.** *J Feline Med Surg* 2007; 9: 373–381.
- 42 Winer JN, Arzi B and Verstraete FJ. **Therapeutic management of feline chronic gingivostomatitis: a systematic review of the literature.** *Front Vet Sci* 2016; 3: 54.
- 43 Lommer MJ and Verstraete FJ. **Concurrent oral shedding of feline calicivirus and feline herpesvirus 1 in cats with chronic gingivostomatitis.** *Oral Microbiol Immunol* 2003; 18: 131–134.
- 44 Dowers KL, Hawley JR, Brewer MM, et al. **Association of *Bartonella* species, feline calicivirus, and feline herpesvirus 1 infection with gingivostomatitis in cats.** *J Feline Med Surg* 2010; 12: 314–321.
- 45 Janeczko S, Atwater D, Bogel E, et al. **The relationship of mucosal bacteria to duodenal histopathology, cytokine mRNA, and clinical disease activity in cats with inflammatory bowel disease.** *Vet Microbiol* 2008; 128: 178–193.
- 46 Moll G, Rasmusson-Duprez I, von Bahr L, et al. **Are therapeutic human mesenchymal stromal cells compatible with human blood?** *Stem Cells* 2012; 30: 1565–1574.
- 47 Semedo P, Correa-Costa M, Antonio Cenedeze M, et al. **Mesenchymal stem cells attenuate renal fibrosis through immune modulation and remodeling properties in a rat remnant kidney model.** *Stem Cells* 2009; 27: 3063–3073.
- 48 Villanueva S, Ewertz E, Carrion F, et al. **Mesenchymal stem cell injection ameliorates chronic renal failure in a rat model.** *Clin Sci* 2011; 121: 489–499.
- 49 Lee SR, Lee SH, Moon JY, et al. **Repeated administration of bone marrow-derived mesenchymal stem cells improved the protective effects on a remnant kidney model.** *Ren Fail* 2010; 32: 840–848.
- 50 Cavaglieri RC, Martini D, Sogayar MC, et al. **Mesenchymal stem cells delivered at the subcapsule of the kidney ameliorate renal disease in the rat remnant kidney model.** *Transplant Proc* 2009; 41: 947–951.

Available online at [jfms.com](http://jfms.com)

Reprints and permission: [sagepub.co.uk/journalsPermissions.nav](http://sagepub.co.uk/journalsPermissions.nav)  
For reuse of images only, contact the corresponding author