

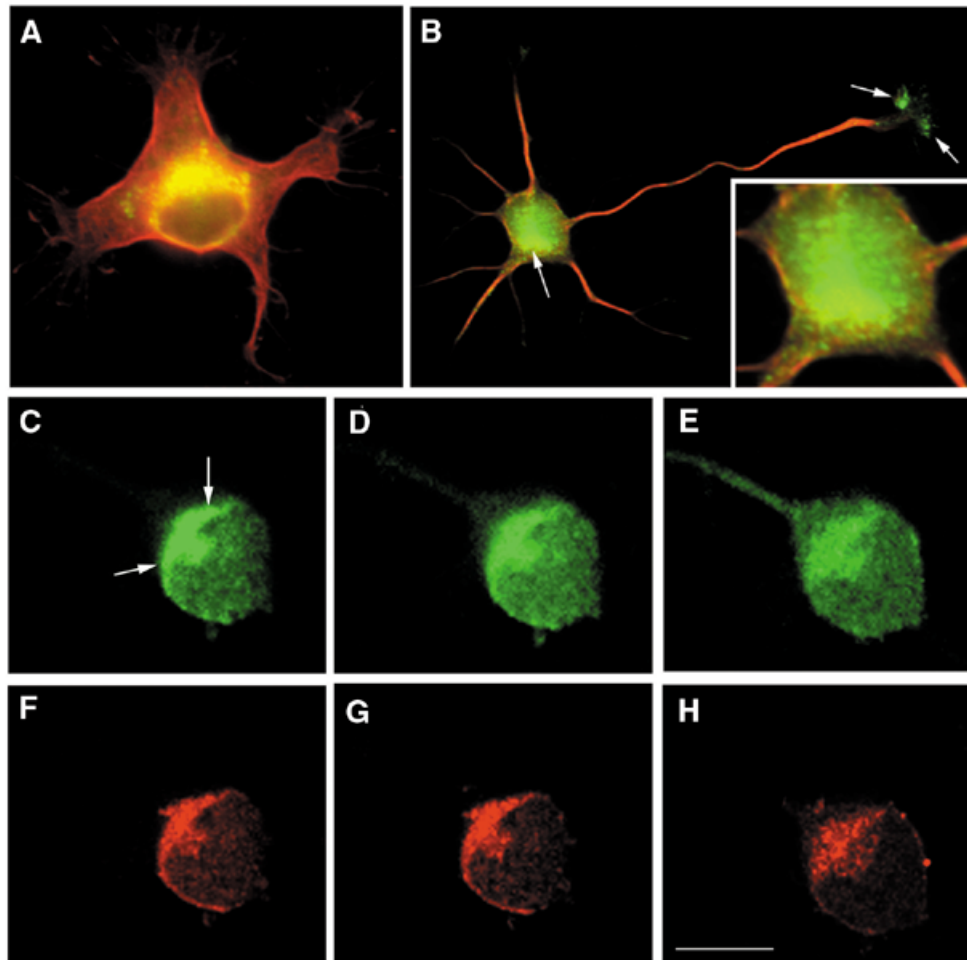
Erratum

The Cdk5-p35 kinase associates with the Golgi apparatus and regulates membrane traffic

Gabriela Paglini, Leticia Peris, Javier Diez-Guerra, Santiago Quiroga & Alfredo Cáceres

EMBO reports 2, 1139–1144, 2001

In the above scientific report, the quality and resolution of Figure 2 did not match the original figure supplied by the authors. The publisher would like to apologise for this error and any confusion caused. The correct figure is printed below.



DOI: 10.1093/embo-reports/kvf048