


## Article

# Spider–Plant Interaction: The Role of Extrafloral Nectaries in Spider Attraction and Their Influence on Plant Herbivory and Reproduction

Karoline Pádua de Oliveira Dias <sup>1,2,3</sup> and Vanessa Stefani <sup>1,2,3,\*</sup> 

<sup>1</sup> Postgraduation Program in Ecology, Conservation and Biodiversity, Federal University of Uberlândia, Uberlândia 38405-302, Brazil; karol.padua15@gmail.com

<sup>2</sup> Laboratory of Venomous Arthropods of the Cerrado, Institute of Biology, Federal University of Uberlândia, Uberlândia 38405-302, Brazil

<sup>3</sup> Laboratory of Natural History and Reproduction of Arthropods (Laboratório de História Natural e Reprodutiva de Artrópodes/LHINRA), Institute of Biology, Federal University of Uberlândia, Uberlândia 38405-302, Brazil

\* Correspondence: vastefani@ufu.br

† Master thesis supervisor.

**Abstract:** Spiders, abundant and diverse arthropods which occur in vegetation, have received little attention in studies investigating spider–plant interactions, especially in plants which have extrafloral nectaries (EFNs). This study examines whether spiders attracted to EFNs on the plant *Heteropterys pteropetala* (Malpighiaceae) function as biological protectors, mitigating leaf herbivory and positively impacting plant fitness, through manipulative experiments. Spiders are attracted to EFNs because, in addition to consuming the resource offered by these structures, they also consume the herbivores that are attracted by the nectar. At the same time, we documented the reproductive phenology of the plant studied and the abundance of spiders over time. Our results revealed that the plant’s reproductive period begins in December with the emergence of flower buds and ends in April with the production of samarids, fruits which are morphologically adapted for wind dispersal, aligning with the peak abundance of spiders. Furthermore, our results demonstrated that spiders are attracted to plants that exude EFNs, resulting in a positive impact on reducing leaf area loss but with a neutral effect on protecting reproductive structures. By revealing the protective function of spiders’ vegetative structures on plants, this research highlights the ecological importance of elucidating the dynamics between spiders and plants, contributing to a deeper understanding of ecosystems.

**Keywords:** *Heteropterys pteropetala*; biotic defence; Cerrado; plant fitness; facultative mutualism; neutral effect



**Citation:** de Oliveira Dias, K.P.; Stefani, V. Spider–Plant Interaction: The Role of Extrafloral Nectaries in Spider Attraction and Their Influence on Plant Herbivory and Reproduction. *Plants* **2024**, *13*, 368. <https://doi.org/10.3390/plants13030368>

Academic Editor: Kleber Del-Claro

Received: 21 December 2023

Revised: 11 January 2024

Accepted: 19 January 2024

Published: 26 January 2024



**Copyright:** © 2024 by the authors. Licensee MDPI, Basel, Switzerland. This article is an open access article distributed under the terms and conditions of the Creative Commons Attribution (CC BY) license (<https://creativecommons.org/licenses/by/4.0/>).

## 1. Introduction

Interactions between spiders and plants can provide evidence of the existence of facultative mutualistic relationships, influencing the structure of ecological communities and the fitness of plants [1–4]. Understanding the function of each organism in this interaction will allow for a better understanding of the evolutionary paths that lead to mutualism. Spiders are considered excellent predators, and, when they live on plants, they forage for their prey. In addition, spiders occasionally use plant resources to supplement their insect-based diet [5–8]. Among these plant-supplied foods are extrafloral nectaries (EFNs) [8,9]. Thus, spiders provide various services to plants, including protection against leaf and flower herbivores, consequently reducing leaf herbivory and/or increasing seed production [1,10–12], acting as important biological defenders [13]. Although spiders are traditionally considered predators in ecosystems, these organisms also frequently feed on the products of extrafloral nectaries [14]. Biotic defences have a mutualistic character whereby resources such as plant EFNs are exchanged for spider services and are mediated

by the interests, costs, and benefits for both groups [8]. The costs and benefits of this association can vary depending on various factors, such as the identity of the spider family [15], the season of EFN activity, and even the presence of competitors such as ants [1,2,16]. However, the relationship between spiders and plants can also be negative, as spiders consume or interfere with pollinators, leading to a reduction in plant fitness [17,18].

EFNs are nectar-producing structures not associated with pollination and found in various parts of plants, such as leaves, stems, and flower bud calyxes [19,20]. These nectaries produce a solution rich in water, sugars, amino acids, proteins, and lipids [21,22]. EFN-bearing plants are common in the Cerrado biome [23,24]. A study by Nahas et al. [14] found the presence of fructose from EFNs from eight different plant species in 39 spider species from seven families. This indicates that feeding on EFNs is advantageous for spiders, as nectar is an excellent source of energy [1,25–27].

Although spiders are among the most abundant and diverse arthropods in vegetation, studies on their interactions with plants are relatively scarce, and the literature on integrative studies on the relationship between spiders and extrafloral nectaries is still limited [28,29]. In this context, the aim of this study is to determine whether or not the presence of extrafloral nectaries on *Heteropterys pteropetala* A. Juss. (Malpighiaceae) is an attractive factor for spiders and whether these animals act as biological protectors. Our main hypothesis is that spiders are attracted to the extrafloral nectaries on this plant and, consequently, that their presence reduces leaf damage and increases the reproductive success of *H. pteropetala* (Table 1). Spiders can reduce damage to leaves and increase the reproductive success of a plant by consuming the herbivores present on it. In addition, we describe the phenology of the different reproductive phases of *H. pteropetala* and the abundance of spiders found over time.

**Table 1.** Overview of the hypotheses (H) and predictions tested in this study. EFNs<sub>inactive</sub> are the nectaries that were obstructed with enamel, while EFNs<sub>active</sub> are the nectaries without manipulation (see methodology).

Overview	Prediction	Approach	Resource
H1: EFNs attract spiders.	EFNs <sub>active</sub> plants exhibit a higher abundance of spiders compared to EFNs <sub>inactive</sub> plants.	Evaluation of spider abundance between EFNs <sub>active</sub> and EFNs <sub>inactive</sub> plants.	Figures 1 and 2 Table 2
H2: Spiders act as protectors against leaf damage.	EFNs <sub>active</sub> plants have lower herbivory rates than EFNs <sub>inactive</sub> plants.	Analysis of herbivory rates throughout the year between EFNs <sub>active</sub> and EFNs <sub>inactive</sub> plants.	Figure 3 Table 3
H3: Positive impact of spiders on plant reproductive success.	EFNs <sub>active</sub> plants show a higher reproductive rate than EFNs <sub>inactive</sub> plants.	Evaluation of the ratio between samarids/buds and samarids/flowers as well as the total seed weight and fruiting rate between EFNs <sub>active</sub> and EFNs <sub>inactive</sub> plants.	Table 4

## 2. Results

The reproductive period of the *H. pteropetala* in our study began in December 2021 with the emergence of the first floral buds and ended in May 2022 with the collection of the samarids. The reproductive peak for the floral buds in both groups (EFNs<sub>active</sub> and EFNs<sub>inactive</sub>) was in February (Rayleigh test for buds with EFNs<sub>active</sub>  $z = 0.94$ ;  $p < 0.001$ ; buds with EFNs<sub>inactive</sub>  $z = 0.91$ ;  $p < 0.001$ ) (Table 2, Figure 1a,b). The inflorescences on the plants EFNs<sub>active</sub> reached their peak in February (Rayleigh test:  $z = 0.943$ ;  $p < 0.01$ ), while the EFNs<sub>inactive</sub> plants reached their inflorescence peak in March (Rayleigh test:  $z = 0.932$ ;  $p < 0.01$ ) (Table 1, Figure 1c,d). The peak of samarid production occurred in April for both manipulations (Rayleigh test for samarids with EFNs<sub>active</sub>  $z = 0.957$ ;  $p < 0.01$ ; samarids with EFNs<sub>inactive</sub>  $z = 0.952$ ;  $p < 0.01$ ) (Table 1, Figure 1e,f). Spider abundance was

higher in January and February, with peak abundance being observed in February in both manipulations (EFNs<sub>active</sub>  $z = 0.436$ ;  $p < 0.01$ ; and EFNs<sub>inactive</sub>  $z = 0.366$ ;  $p < 0.03$ ) (Table 1, Figure 1g,h). There was an absence of spiders on the EFNs<sub>active</sub> plants in August, and the lowest abundance of spiders was also recorded in August for the EFNs<sub>inactive</sub> plants.

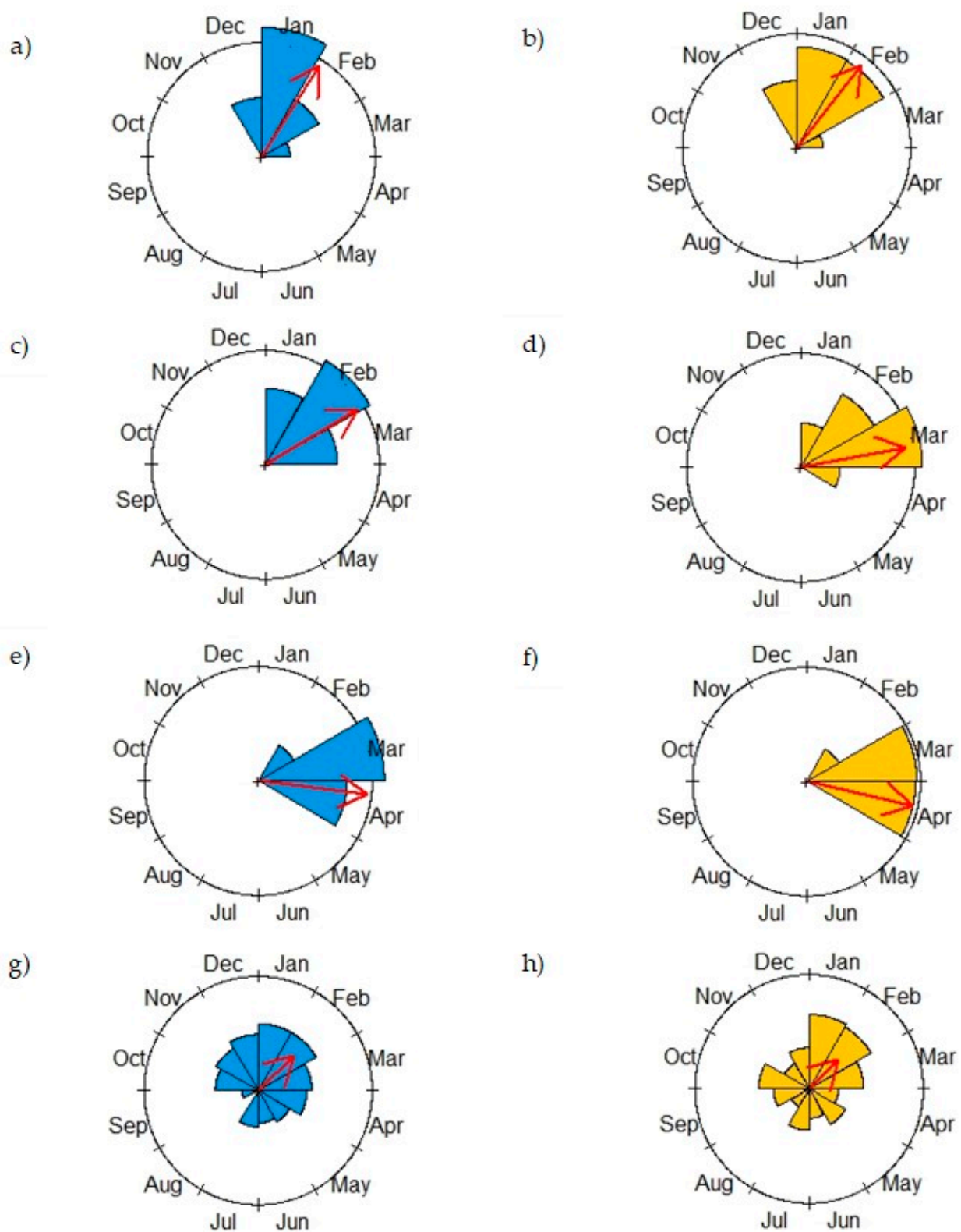
**Table 2.** Circular statistics applied to reproductive phenophases and spider abundance in *Heteropterys pteropetala* with EFNs<sub>active</sub> ( $n = 20$ ) and EFNs<sub>inactive</sub> ( $n = 20$ ) in a Cerrado area at the Ecological Reserve of Clube Caça e Pesca Itororó in Uberlândia, Minas Gerais, Brazil. The Rayleigh test was conducted with a significance level of 0.05.

	Reproductive Phenophases				Abundance			
	Floral Buttons EFNs <sub>active</sub>	Floral Buttons EFNs <sub>inactive</sub>	Flowers EFNs <sub>active</sub>	Flowers EFNs <sub>inactive</sub>	Samarids EFNs <sub>active</sub>	Samarids EFNs <sub>inactive</sub>	Spiders EFNs <sub>active</sub>	Spiders EFNs <sub>inactive</sub>
Abundance total	15,368	14,734	7183	13,140	24,105	24,620	97	60
Length of mean vector (r)	0.49	0.44	0.51	0.85	0.77	0.84	0.43	0.37
Mean vector ( $\mu$ )	32.15	34.1	59.4	71.3	97.8	102.2	42.7	41.65
Month	February	February	February	March	April	April	February	February
Rayleigh test (Z)	0.94	0.91	0.943	0.932	0.957	0.952	0.436	0.366
Rayleigh test (p)	0.001	0.001	0.001	0.001	0.001	0.001	0.01	0.03

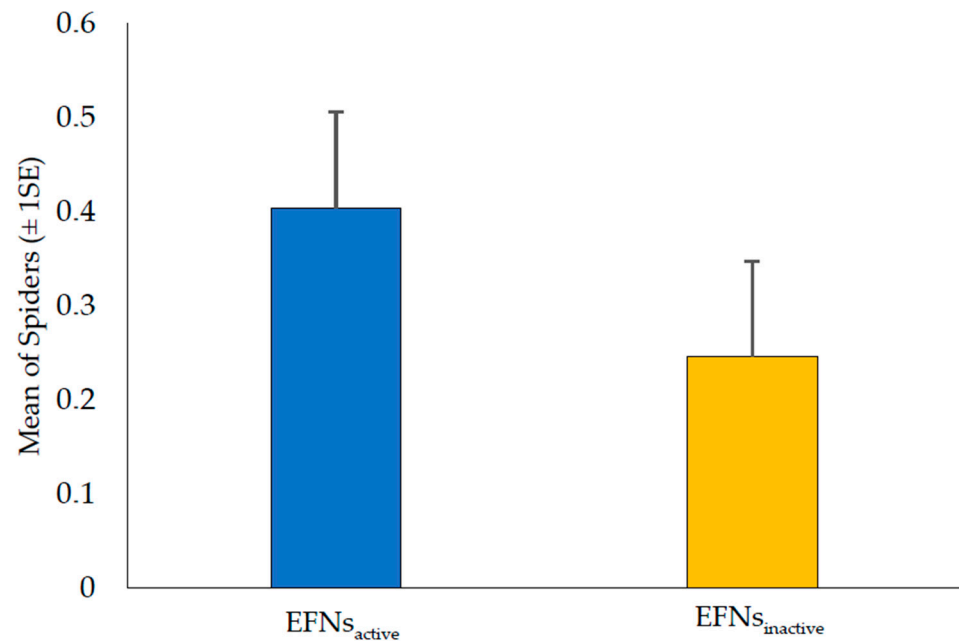
Spider abundance was higher in the EFNs<sub>active</sub> plants than in the EFNs<sub>inactive</sub> plants ( $\chi^2 = 9.0681$ ;  $df = 1$ ;  $p = 0.0026$ , Figure 2). A total of 157 spider specimens were counted, with 97 individuals found on the EFNs<sub>active</sub> plants and 60 found on the EFNs<sub>inactive</sub> plants (Table 3). The EFNs<sub>active</sub> plants had a higher number of spiders from the families Thomisidae, Araneidae, and Salticidae compared to the EFNs<sub>inactive</sub> plants (Table 3). However, only the Cheiracanthiidae family had a higher number of representatives in the EFNs<sub>inactive</sub> plants compared to the EFNs<sub>active</sub> plants (Table 3). The families Theridiidae and Oxyopidae showed no significant difference in the number of individuals between the treatment and control plants. A total of 470 insects were seen to be associated with *H. pteropetala* in both treatments, with the orders Lepidoptera (larval stage) and Hemiptera being the most abundant, especially in plants with EFNs<sub>inactive</sub> (Table A1).

**Table 3.** Abundance of spider families found in different manipulations of the plant *Heteropterys pteropetala*.

Family	Number of Individuals on Plants with EFNs <sub>active</sub>	Number of Individuals on Plants with EFNs <sub>inactive</sub>	$\chi^2$	$p$
Thomisidae	47	27	7.33	0.026
Araneidae	22	7	9.88	0.014
Salticidae	13	7	8.87	0.042
Theridiidae	9	6	2.21	0.652
Cheiracanthiidae	4	12	8.21	0.041
Oxyopidae	2	1	0.24	0.423
Total	97	60		

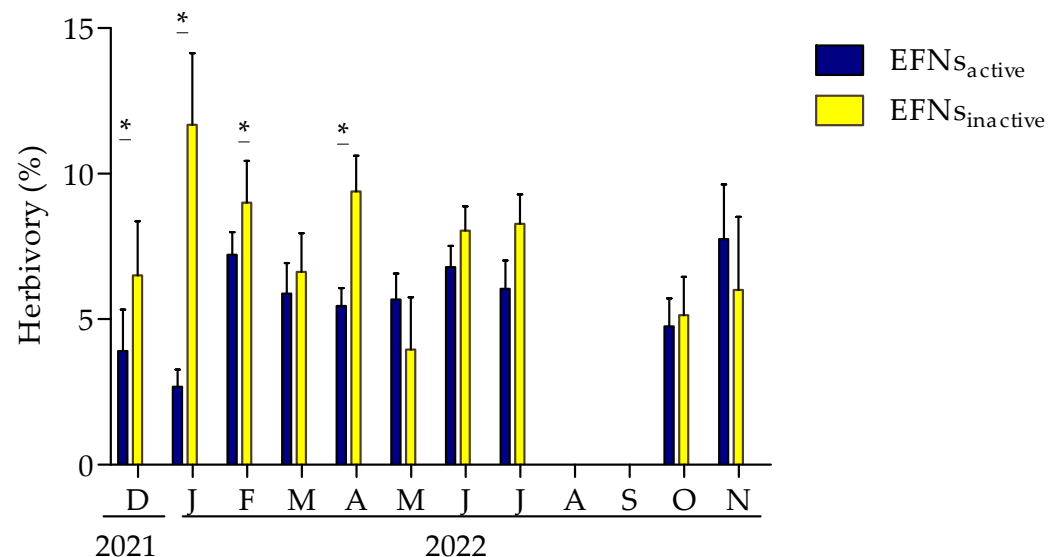


**Figure 1.** Number of reproductive structures produced by *Heteropoterys pteropetala* and spider abundance between December 2021 and January 2022 for the EFNs<sub>active</sub> (blue, left) and EFNs<sub>inactive</sub> (yellow, right) groups: (a,b) floral buds; (c,d) inflorescences; (e,f) samarids; and (g,h) spider abundance. Arrow position represents the mean vector ( $\mu$ ), and arrow length represents the length of the mean vector ( $r$ ).



**Figure 2.** Mean number of spiders ( $\pm 1$  SE/standard error) per plant of *Heteropterys pteropetala* with and without active EFNs (Extrafloral Nectaries).

The EFNs<sub>inactive</sub> plants showed less loss of leaf area ( $\chi^2 = 35.646$ ;  $df = 1$ ;  $p = 0.0019$ ) and less variation in herbivory within the manipulated groups ( $\chi^2 = 11.609$ ;  $df = 1$ ;  $p = 0.0065$ ), and this variation persisted over the months studied ( $\chi^2 = 13.206$ ;  $df = 1$ ;  $p = 0.0001$ ) compared to the EFNs<sub>inactive</sub> plants. There was also variation in the herbivory between different plant manipulations in December (2021), January, February, and April (2022) (Figure 3). In August and September, the plants were leafless, which resulted in a lack of herbivory, and they only began to sprout again in September (Figure 3). The samarid/bud ratios, samarid/flower ratios, and seed weight did not differ significantly between the EFNs<sub>active</sub> and EFNs<sub>inactive</sub> plants (Table 4).



**Figure 3.** Foliar area loss (mean  $\pm$  SE/standard error) in *Heteropterys pteropetala* from December 2021 to November 2022. The response variable was herbivory; plant type (EFNs<sub>active</sub> and EFNs<sub>inactive</sub>) was the predictor variable; months of the year and plant identification were the random variables. \* = significant difference between the manipulations (Tukey's post hoc:  $p < 0.05$ ).

**Table 4.** Productivity of *Heteropterys pteropetala* in the presence and absence of spiders indicated by the ratio of samarids/buds, samarids/flowers, and seed weight. Values represent mean  $\pm$  SE (standard error).

	EFNs <sub>active</sub>	EFNs <sub>inactive</sub>	$\chi^2$	<i>p</i>
Samarids/Buds (Gamma)	1.7 $\pm$ 0.13	2 $\pm$ 0.13	0.957	0.328
Samarids/Flowers (Gamma)	0.384 $\pm$ 0.132	0.563 $\pm$ 0.132	2.36	0.12
Seed Weight (Gaussian)	23.08 $\pm$ 2.28	26.16 $\pm$ 2.28	0.0672	0.795

### 3. Discussion

Our study suggests that spiders are attracted to plants that exude EFNs and that this attraction has a positive effect on reducing leaf area loss for *H. pteropetala* plants in the Brazilian Cerrado, confirming the first and second hypotheses. Thus, we have demonstrated that the presence of active nectaries acts as a source of attraction for spiders that can act as efficient biological protectors. In other words, the nectar produced in EFNs can complement the diet of arthropod predators [26,27] and consequently attract these organisms, leading to a reduction in herbivory [30].

In particular, we found that active EFNs more efficiently attract spiders belonging to the Thomisidae, Araneidae, and Salticidae families. Similar results were obtained by Stefani et al. [31], who, after isolating shrubs of *Palicourea rigida* Kunth (Rubiaceae) from ants and measuring the recruitment of spiders visiting post-floral nectaries, found representatives of the Thomisidae and Salticidae families to be among those most abundant. This abundance of spiders may be associated with both the attractiveness of the nectar and the absence of ants. Supposedly, the great challenge faced by different species of spiders that use EFNs as a source of complementary food is to break through the defenses promoted by ants [2,16]. The greatest abundance of spiders in our study was recorded during the reproductive period of *H. pteropetala* in both manipulations (Figure 1), although the greatest abundance was observed in the EFNs<sub>active</sub> plants (Figures 1 and 2; Table 2). This increase in abundance (in both manipulations) may have influenced neutral protection rates during this period, refuting our third hypothesis. The presence of reproductive structures, such as buds, flowers, and fruits (forming samarids), can provide spiders with a wide variety of shelters, opportunities to find conspecifics, anchoring points for webs, and opportunities to use different foraging methods, even on plants with inactive EFNs [11,32].

Of all the spider families found, the Thomisidae family was the most abundant (Table 3), found on the vegetative and reproductive parts of *H. pteropetala*. Thomisidae spiders are known to be flower spiders, as they often camouflage themselves in flower petals or structures, waiting for pollinating prey to arrive [33]. Thus, spiders from the Thomisidae family are strongly associated with the reproductive period of their host plants. Studies have shown that, when individuals from this family are present in the reproductive parts of a plant, they can have positive, neutral, or negative effects on its reproduction. For example, Romero and Vasconcellos-Neto (2003) demonstrated positive effects on the reproduction of *Trichogoniopsis adenantha* (DC) (Asteraceae) in the presence of Thomisidae spiders, as the plants with the presence of these spiders produced more seeds compared to the plants without them [34]. Neutral effects, for example, were presented by Gavini et al. (2019), who studied interactions between the flowers of *Anemone multifida* (Ranunculaceae), their floral visitors, and *Misumenops pallidus* (Thomisidae). The authors observed that the presence of spiders did not reduce the number of floral visitors or the quantity and quality of the fruit and seeds formed [12]. Finally, there is ample evidence of the negative effects that spiders have on the reproduction of their host plants. For example, in another study, the presence of Thomisidae spiders in *Leucanthemum vulgare* (Vaill.) Lam. (Asteraceae) flowers reduced the number of floral visitors and the time pollinators spent in the flowers, generating a cascade effect which resulted in a 17% reduction in fruit and seed formation [35].

Spiders from the Salticidae and Araneidae families were also more abundant on the EFNs<sub>active</sub> plants in our study. According to Jackson et al. (2001), Salticidae spiders may have the habit of feeding on nectar, indicating that nectar feeding is possibly a common behaviour in this family [27]. Orb-weaving spiders, such as Araneidae (Table 3), may also have the habit of feeding on nectar from EFNs (as well as dismantling and rebuilding their webs at regular intervals, allowing them to build their webs where resources are most abundant) [36]. For example, Nahas et al. [14] investigated the presence of fructose in the bodies of spiders that visit plants with EFNs in a neotropical savannah environment. In their study, the species *Araneus venatrix* (Araneidae), collected at night from *Qualea grandiflora* (Vochysiaceae) plants, showed the highest concentrations of fructose [14]. Thus, araneids build their webs to capture their prey on plants with EFNs and supplement their diet with nectar. The arrival of new herbivores on the plant can occur by air, meaning that the webs built on the plant capture these herbivores before they even reach the plant, reducing the damage caused by herbivory.

Unlike the other spider families found on *H. pteropetala*, the Cheiracanthiidae family was more abundant on the EFNs<sub>inactive</sub> plants than on the EFNs<sub>active</sub> plants, despite the fact that this family is known for its nectar consumption [36]. As the representatives of the Cheiracanthiidae family were adults and in the oviposition period, they were possibly found in greater numbers on the EFNs<sub>inactive</sub> plants because these locations allowed them to avoid the presence of competing spiders and probable predators of their eggs and young. In addition, spiders during egg sac care reduce their consumption of prey [37], thus affecting any positive interaction with the plant.

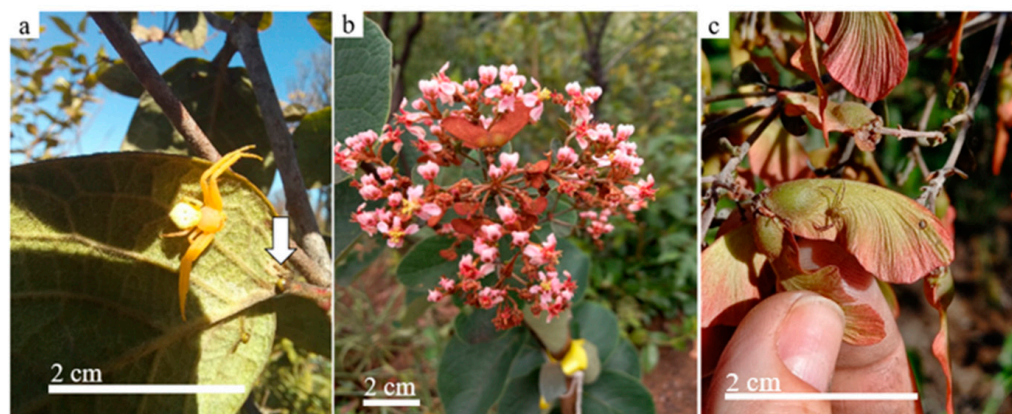
In summary, spiders are attracted to EFN nectar, confirming the existence of mutualism in the form biotic protection between spiders and *H. pteropetala*. However, the positive relationship is limited to leaf structures, while, in the reproductive parts, the association found was neutral. Thus, the predatory activity of spiders on reproductive structures suggests a commensal role in which one species (spider) benefits from the interaction, but the other (plant) is neither benefited nor harmed.

## 4. Materials and Methods

### 4.1. The Study Site and Species of Plant

This study was conducted from December 2021 to November 2022 at the Ecological Reserve of the Clube de Caça e Pesca Itororó de Uberlândia (18°59' S and 48°18' W, WGS84 Datum, ~640 ha), in the state of Minas Gerais (MG), Brazil. The reserve's vegetation comprises various savanna physiognomies, with trees reaching up to 8 m in height [38]. The mean monthly rainfall ranges between 0 and 360 mm, and the mean monthly temperature is between 20.0 and 25.5 °C, with a dry season between May and September and a rainy season between October and April [3,39].

The plant species studied, *Heteropterys pteropetala*, is a shrub approximately 2 m tall, with two extrafloral nectaries (EFNs) at the base of each leaf (Figure 4a), at the base of the pedicel of the flower buds, and on the bracts of the inflorescences [40]. The inflorescences are terminal panicles with pink flowers (Figure 4b) and are zygomorphic, with five petals and five sepals, and, at the base of each sepal, there are two elaiophores (oil glands), totalling between eight and ten glands per flower [41]. Each flower can produce up to three samarids (a fruit morphologically adapted for wind dispersal) (Figure 4c) [42]. *H. pteropetala* is dependent on cross-pollination for fruiting and is an important species for studies of ecological interactions due to the diversity in its guild of floral visitors. The presence of organisms that take part in pollen transport increases the fruiting and reproductive success of the species [42].



**Figure 4.** The studied plant, *Heteropterys pteropetala*, in the Cerrado sensu stricto at the Ecological Reserve of Clube Caça e Pesca Itororó in Uberlândia, Minas Gerais, Brazil. (a) Thomisidae spider on the abaxial surface of the leaf—note the white arrow indicating the pair of EFNs at the base of the abaxial region of the leaf. (b) Inflorescences of a studied plant. (c) Samarids with the presence of a juvenile Thomisidae spider.

#### 4.2. Experimental Design

To test hypotheses I, II, and III (see Table 1), we isolated the plant against the presence of ants. It is known that ants are also attracted to EFNs, making them important competitors for spiders. According to a study carried out by Lange et al. [16] with nine different plant species with EFNs in a neotropical savannah area, a negative spatial/temporal effect of spider abundance was observed in the presence of ants. In addition, Stefani et al. [2] observed that spider species' richness was significantly higher in the absence of ants, although the reverse was not true, possibly due to the different species composition of the ants and spiders found and, consequently, the different types of interactions between them. Thus, the absence of ants in this study was necessary so that these organisms would not influence our results. Non-toxic resin (entomological glue—Tanglefoot®) was added to the base of the trunk of all the plants to prevent ants from accessing the plant. All the structures, such as grasses, that could serve as a bridge for the ants to access the plants were removed. We then carried out two different manipulations on the *H. pteropetala* plants in a natural environment: (I) EFNs<sub>active</sub> plants were individuals with active extrafloral nectaries ( $n = 20$ ); and (II) EFNs<sub>inactive</sub> plants were individuals with inactive extrafloral nectaries ( $n = 20$ ). The plants in the EFNs<sub>inactive</sub> group underwent a process of enamelling all the nectaries, blocking them, and preventing the release of nectar—in other words, making them inactive. In the plants in the EFNs<sub>active</sub> group, glaze was also applied to the abaxial part of the leaf, next to the extrafloral nectary, allowing the normal release of nectar. Weekly inspections were carried out on all the plants to check the integrity of the nectary obstructions in the EFNs<sub>inactive</sub> plants, as well as the entomological resin at the base of the trunk in both manipulations, to prevent ant access. To describe the reproductive phenology of *H. pteropetala*, all flower buds, inflorescences, and samarids were quantified weekly during the plants' reproductive period.

To test hypothesis I, all the experimental plants were inspected weekly; the spiders found were photographed and quantified after a visual search of the entire bush. The branches were also shaken over a white tray, so that, if any animals were not found during the visual sweep, they would be on the tray for quantification. After the procedure, all the spiders were placed back on the plant.

To test hypothesis II, herbivory rates were measured monthly on five leaves of each plant in both manipulations. Initially, the five leaves of each plant were marked at the initial stage of expansion to monitor and record the loss of leaf area throughout the leaves' ontogeny, i.e., from budding to senescence. Herbivory was calculated from digital images analysed using the ImageJ software version 1.53, as performed by Calixto et al. [43].



To test hypothesis III, flower buds, flowers, and samarids were quantified weekly during the reproductive period for both manipulations. Around 30 days after flowering, the samarids were harvested, dried in the sun for a fortnight, and then weighed separately, depending on the plant manipulation, using a precision electronic analytical balance.

#### 4.3. Data Analysis

All statistical analyses were performed in R version 4.2.2 (R CoreTeam, 2022). Below, we describe the packages used in each analysis.

##### 4.3.1. Phenology of *Heteropoterys pteropetala*

The data for calculating the phenology of the *H. pteropetala* plant were observed using circular statistical analyses. These analyses served to verify the occurrence of seasonality between different reproductive phenophases (presence of floral buds, flowers, and fruits) throughout the year, as well as to analyse spider abundance on plants with and without active EFNs. For the circular analyses, we divided the 360° range into 12 groups. Each group represents a month of the year, with each month corresponding to a 30° angle and the mean vector ( $\mu$ ) being indicative of the direction (month) where the data are possibly more concentrated (reproductive phenophases and spider abundance). Subsequently, to evaluate different plant phenophases and whether spider abundance showed a non-random distribution throughout the year, we used the Rayleigh test for uniformity after confirming the normality of the circular data [44]. In the Rayleigh test,  $p$ -values below 0.05 and a mean vector length ( $r$ ) close to 1 indicated seasonality in the data, i.e., phenological activities were concentrated around a single period or mean angle [44]. The mean month for each variable was obtained by converting the angular mean of the corresponding mean months [44,45].

##### 4.3.2. Hypothesis I

We used “glmmTMB” [46] and “Dharma” [47] with a “Poisson” distribution to answer whether spiders are attracted to EFNs. We compared differences in spider abundance (response variable) between the plants with EFNs<sub>inactive</sub> and EFNs<sub>active</sub> (predictor variables), considering the months of the year and plant identification as random variables.

##### 4.3.3. Hypothesis II

To answer the hypothesis that spiders act in a mutualistic relationship as protectors, we analysed variations in herbivory (response variable) between the EFNs<sub>inactive</sub> and EFNs<sub>active</sub> plants (predictor variables), considering the months of the year and plant identification as random variables. We used GLMM (binomial distribution), with Tukey’s post hoc tests being performed between the manipulations. The GLMM was conducted with the “glmer” function from the “lme4” package [47], followed by “Dharma” [48] to fit and check the residuals. Model significance was analysed with the Wald  $\chi^2$  test through the Anova function, using the “car” package [49].

##### 4.3.4. Hypothesis III

To verify whether the presence of spiders impacted the reproductive success of the plants, we used glmmTMB with a Gamma distribution to check whether EFNs<sub>inactive</sub> and EFNs<sub>active</sub> (predictor variables) influenced the proportion between samarids/buds and samarids/flowers (response variables). Plant ID was considered a random effect [49]. To analyse if there was variation in the total weight of seeds produced between the EFNs<sub>inactive</sub> and EFNs<sub>active</sub> plants, we used glmmTMB with a Gaussian distribution with the “identity” link. Individual plant identity was considered a random factor (Table 1).

**Author Contributions:** Conceptualization, K.P.d.O.D. and V.S.; methodology, K.P.d.O.D. and V.S.; formal analysis, V.S.; writing—original draft preparation, K.P.d.O.D. and V.S.; writing—review and editing, K.P.d.O.D. and V.S.; visualization, K.P.d.O.D. and V.S.; supervision, V.S.; project administration, V.S. All authors have read and agreed to the published version of the manuscript.

**Funding:** This study was financed in part by the Conselho Nacional de Desenvolvimento Científico e Tecnológico (CNPq) with grant number 403647/2021-5 (V.S.), Coordenação de Aperfeiçoamento de Pessoal de Nível Superior—Brazil (CAPES) with grant number 88887.666322/2022-00 (K.P.O.D.).

**Data Availability Statement:** All data underlying our study was deposited in the Dryad Digital Repository <https://doi.org/10.5061/dryad.v15dv423k>.

**Acknowledgments:** We thank the Clube de Caça e Pesca Itororó de Uberlândia for having made available the reserve for the development of this study and the Universidade Federal de Uberlândia (UFU).

**Conflicts of Interest:** The authors declare no conflicts of interest.

## Appendix A

**Table A1.** Main insect orders found on *Heteropoterys pteropetala* in each of the manipulations.

Order	Number of Individuals on Plants with EFN <sub>active</sub>	Number of Individuals on Plants with EFN <sub>inactive</sub>
Hemiptera	16	64
Diptera	35	18
Lepdoptera (larval stage)	134	167
Coleoptera	10	10
Hymenoptera	4	4
Orthoptera	3	5
<b>Total</b>	<b>202</b>	<b>268</b>

## References

- Nahas, L.; Gonzaga, M.O.; Del-Claro, K. Emergent Impacts of Ant and Spider Interactions: Herbivory Reduction in a Tropical Savanna Tree. *Trop. Biol. Conserv.* **2012**, *44*, 498–505. [CrossRef]
- Stefani, V.; Pires, T.L.; Torezan-Silingardi, H.M.; Del-Claro, K. Beneficial Effects of Ants and Spiders on the Reproductive Value of *Eriotheca gracilipes* (Malvaceae) in a Tropical Savanna. *Public Libr. Sci.* **2015**, *10*, e0131843. [CrossRef] [PubMed]
- Silva, M.O.; Santos, M.P.; Sousa, A.C.; Silva, R.L.; Moura, I.A.; Silva, R.S.; Costa, K.D. Soil Quality: Biological Indicators for Sustainable Management. *Braz. J. Dev.* **2021**, *7*, 6853–6875. [CrossRef]
- Bronstein, J.L. The Gift That Keeps on Giving: Why Does Biological Diversity Accumulate Around Mutualisms? In *Plant-Animal Interactions*; Springer International Publishing: New York, NY, USA, 2021; pp. 283–306.
- Smith, R.B.; Mommsen, T.P. Pollen Feeding in an Orb-Weaving Spider. *Science* **1984**, *226*, 1330–1332. [CrossRef] [PubMed]
- Diniz, S.; Tizo-Pedroso, E.; Lange, D.; Andrade Vilela, A.; Justino, D.G.; Alves Martins, F.; Germanos, E.; Arruda, R.; Stefani, V. Might Heterostyly Underlie Spider Occurrence on Inflorescences? A Case Study of *Palicourea rigida* (Rubiaceae), a Common Shrub from Brazilian Cerrado. *Psyche* **2012**, *2012*, 791395.
- Nyffeler, M.; Olson, E.J.; Symondson, W.O. Plant-eating by spiders. *J. Arachnol.* **2016**, *44*, 15–27. [CrossRef]
- Del-Claro, K.; Stefani, V.; Nahas, L.; Torezan-Silingardi, H.M. Spiders as Plant Partners: Complementing Ant Services to Plants with Extrafloral Nectaries. In *Behaviour and Ecology of Spiders*; Springer International Publishing: New York, NY, USA, 2017; pp. 215–226.
- Cross, F.R.; Jackson, R.R. Odour-mediated response to plants by *evarcha culicivora*, a blood-feeding jumping spider from East Africa. *N. Z. J. Zool.* **2009**, *36*, 75–80. [CrossRef]
- Wise, D.H. *Spiders in Ecological Webs*; Cambridge University Press: Cambridge, UK, 1993.
- Romero, G.Q.; Souza, J.C.; Vasconcellos-Neto, J. Anti-herbivore protection by mutualistic spiders and the role of plant glandular trichomes. *Ecology* **2008**, *89*, 3105–3115. [CrossRef]
- Gavini, S.S.; Quintero, C.; Tadey, M. Ecological role of a flower-dwelling predator in a tri-trophic interaction in northwestern Patagonia. *Acta Oecologica* **2019**, *95*, 100–107. [CrossRef]
- Moura, R.F.; Colberg, E.; Alves-Silva, E.; Mendes-Silva, I.; Fagundes, R.; Stefani, V.; Del-Claro, K. Biotic Defenses Against Herbivory. In *Plant-Animal Interactions*; Springer International Publishing: New York, NY, USA, 2021; pp. 93–118.
- Nahas, L.; Gonzaga, M.O.; Del-Claro, K. Wandering and web spiders feeding on the nectar from extrafloral nectaries in neotropical savanna. *J. Zool.* **2017**, *301*, 125–132. [CrossRef]
- Whitney, K.D. Experimental Evidence That Both Parties Benefit in a Facultative Plant–Spider Mutualism. *Ecology* **2004**, *85*, 1642–1650. [CrossRef]
- Lange, D.; Calixto, E.S.; Del-Claro, K.; Stefani, V. Spatiotemporal niche-based mechanisms support a stable coexistence of ants and spiders in an extrafloral nectary-bearing plant community. *J. Anim. Ecol.* **2021**, *90*, 1570–1582. [CrossRef] [PubMed]

17. Heiling, A.M.; Herberstein, M.E. Predator-prey coevolution: Australian native bees avoid their spider predators. *Proc. R. Soc. London Ser. B Biol. Sci.* **2004**, *271*, S196–S198. [[CrossRef](#)] [[PubMed](#)]
18. Ings, T.C.; Chittka, L. Predator crypsis enhances behaviourally mediated indirect effects on plants by altering bumblebee foraging preferences. *Proc. R. Soc. London Ser. B Biol. Sci.* **2009**, *276*, 2031–2036. [[CrossRef](#)] [[PubMed](#)]
19. Machado, S.R.; Morellato, L.P.; Sajo, M.G.; Oliveira, P.S. Morphological patterns of extrafloral nectaries in woody plant species of the Brazilian cerrado. *Plant Biol.* **2008**, *10*, 660–673. [[CrossRef](#)] [[PubMed](#)]
20. Marazzi, B.; Bronstein, J.L.; Koptur, S. The diversity, ecology and evolution of extrafloral nectaries: Current perspectives and future challenges. *Ann. Bot.* **2013**, *111*, 1243–1250. [[CrossRef](#)] [[PubMed](#)]
21. Heil, M.; Koch, T.; Hilpert, A.; Fiala, B.; Boland, W.; Linsenmair, K.E. Extrafloral nectar production of the ant-associated plant, *Macaranga tanarius*, is an induced, indirect, defensive response elicited by jasmonic acid. *Proc. Natl. Acad. Sci. USA* **2001**, *98*, 1083–1088. [[CrossRef](#)]
22. Del-Claro, K.; Rico-Gray, V.; Torezan-Silingardi, H.M.; Alves-Silva, E.; Fagundes, R.; Lange, D.; Dáttilo, W.; Vilela, A.A.; Aguirre, A.; Rodriguez-Morales, D. Loss and gains in ant–plant interactions mediated by extrafloral nectar: Fidelity, cheats, and lies. *Insectes Sociaux* **2016**, *63*, 207–221. [[CrossRef](#)]
23. Oliveira, P.S.; Leitao-Filho, H.F. Extrafloral Nectaries: Their Taxonomic Distribution and Abundance in the Woody Flora of Cerrado Vegetation in Southeast Brazil. *Trop. Biol. Conserv.* **1987**, *19*, 140. [[CrossRef](#)]
24. Rico-Gray, V.; Oliveira, P.S. *The Ecology and Evolution of Ant–Plant Interactions*; University of Chicago Press: Chicago, IL, USA, 2007.
25. Taylor, R.M.; Bradley, R.A. Plant nectar increases survival, molting, and foraging in two foliage wandering spiders. *J. Arachnol.* **2009**, *37*, 232–237. [[CrossRef](#)]
26. Sanders, D. Herbivory in Spiders. In *Spider Ecophysiology*; Springer: Berlin/Heidelberg, Germany, 2013; pp. 385–391.
27. Jackson, R.R.; Pollard, S.D.; Nelson, X.J.; Edwards, G.B.; Barrion, A.T. Jumping spiders (Araneae: Salticidae) that feed on nectar. *J. Zool.* **2001**, *255*, 25–29. [[CrossRef](#)]
28. Halaj, J.; Ross, D.W.; Moldenke, A.R. Importance of habitat structure to the arthropod food-web in Douglas-fir canopies. *Oikos J.* **2000**, *90*, 139–152. [[CrossRef](#)]
29. Souza, A.L.; Martins, R.P. Foliage Density of Branches and Distribution of Plant-Dwelling Spiders. *Trop. Biol. Conserv.* **2005**, *37*, 416–420.
30. Bucher, R.; Menzel, F.; Entling, M.H. Risk of spider predation alters food web structure and reduces local herbivory in the field. *Oecologia* **2015**, *178*, 571–577. [[CrossRef](#)] [[PubMed](#)]
31. Stefani, V.; Alves, V.N.; Lange, D. Induced indirect defence in a spider–plant system mediated by pericarpial nectaries. *Austral Ecol.* **2019**, *44*, 1005–1012. [[CrossRef](#)]
32. Jiménez-Valverde, A.; Lobo, J.M. Determinants of local spider (*Araneidae* and *Thomisidae*) species richness on a regional scale: Climate and altitude vs. habitat structure. *Ecol. Entomol.* **2007**, *32*, 113–122. [[CrossRef](#)]
33. Bhaskara, R.M.; Brijesh, C.M.; Ahmed, S.; Borges, R.M. Perception of ultraviolet light by crab spiders and its role in selection of hunting sites. *J. Comp. Physiol. A* **2009**, *195*, 409–417. [[CrossRef](#)]
34. Romero, G.Q.; Vasconcelos-Neto, J. Natural history of *Misumenops argenteus* (Thomisidae): Seasonality and diet on *Trichogoniopsis adenantha* (Asteraceae). *J. Arachnol.* **2003**, *31*, 297–304. [[CrossRef](#)]
35. Suttle, K.B. Pollinators as mediators of top-down effects on plants. *Ecol. Lett.* **2003**, *6*, 688–694. [[CrossRef](#)]
36. Taylor, R.M.; Pfannenstiel, R.S. How Dietary Plant Nectar Affects the Survival, Growth, and Fecundity of a Cursorial Spider *Cheiracanthium inclusum* (Araneae: Miturgidae). *Environmetal Entomol.* **2009**, *38*, 1379–1386. [[CrossRef](#)]
37. Foelix, R.F. *Biology of Spiders*, 3rd ed.; Oxford University Press: New York, NY, USA, 2011; pp. 1–432.
38. Bacci, L.F.; Versiane, A.F.; Oliveira, A.L.; Romero, R. Melastomataceae na RPPN do Clube Caça e Pesca Itororó, Uberlândia, MG, Brasil. *Hoehnea* **2016**, *43*, 541–556. [[CrossRef](#)]
39. Silva, C.P.; Rocha, G.F.; Silva, F.A. Trabalhadores Rurais e Acesso à Renda: Estudo Sobre a Agricultura Familiar Orgânica em Pernambuco (Brasil). Meio Ambiente (Brasil). 2020. Available online: <https://meioambientebrasil.com.br/index.php/MABRA/article/view/25> (accessed on 20 November 2021).
40. Reu, W.F., Jr.; Del-Claro, K. Natural history and biology of *Chlamisus minax* Lacordaire (Chrysomelidae: Chlamisinae). *Neotrop. Entomol.* **2005**, *34*, 357–362.
41. Assunção, M.A.; Torezan-Silingardi, H.M.; Del-Claro, K. Do ant visitors to extrafloral nectaries of plants repel pollinators and cause an indirect cost of mutualism? *Flora Morphol. Distrib. Funct. Ecol. Plants* **2014**, *209*, 244–249. [[CrossRef](#)]
42. Schmidt, I.B.; Sampaio, A.B.; Borghetti, F. Efeitos da época de queima sobre a reprodução sexuada e estrutura populacional de *Heteropterys pteropetala* (Adr. Juss.), Malpighiaceae, em áreas de Cerrado sensu stricto submetidas a queimas bienais. *Acta Bot. Bras.* **2005**, *19*, 927–934. [[CrossRef](#)]
43. Calixto, E.S.; Lange, D.; Del-Claro, K. Foliar anti-herbivore defenses in *Qualea multiflora* Mart. (*Vochysiaceae*): Changing strategy according to leaf development. *Flora Morphol. Distrib. Funct. Ecol. Plants* **2015**, *212*, 19–23. [[CrossRef](#)]
44. Morellato, L.P.; Alberti, L.F.; Hudson, I.L. Applications of Circular Statistics in Plant Phenology: A Case Studies Approach. In *Phenological Research*; Springer: Dordrecht, The Netherlands, 2010; pp. 339–359.
45. Vilela, A.A.; Del Claro, V.T.; Torezan-Silingardi, H.M.; Del-Claro, K. Climate changes affecting biotic interactions, phenology, and reproductive success in a savanna community over a 10-year period. *Arthropod Plant Interact* **2018**, *12*, 215–227. [[CrossRef](#)]

46. Brooks, M.E.; Kristensen, K.; Van Benthem, K.J.; Magnusson, A.; Berg, C.W.; Nielsen, A.; Skaug, H.J.; Machler, M.; Bolker, B.M. GlimmTMB Balances Speed and Flexibility Among Packages for Zero-inflated Generalized Linear Mixed Modeling. *R J.* **2017**, *9*, 378. [[CrossRef](#)]
47. Bates, D.; Mächler, M.; Bolker, B.; Walker, S. lme4: Linear Mixed-Effects Models using ‘Eigen’ and S4 (Version 1.1-27) [R Package]. Available online: <https://cran.r-project.org/package=lme4> (accessed on 11 December 2023).
48. Hartig, F. DHARMA: Residual Diagnostics for Hierarchical (Multi-Level/Mixed) Regression Models (Version 0.4.1) [R Package]. Available online: <https://cran.r-project.org/package=DHARMA> (accessed on 11 December 2023).
49. Fox, J. *Applied Regression Analysis and Generalized Linear Models*, 3rd ed.; SAGE Publications: Thousand Oaks, CA, USA, 2015; pp. 1–816.

**Disclaimer/Publisher’s Note:** The statements, opinions and data contained in all publications are solely those of the individual author(s) and contributor(s) and not of MDPI and/or the editor(s). MDPI and/or the editor(s) disclaim responsibility for any injury to people or property resulting from any ideas, methods, instructions or products referred to in the content.