

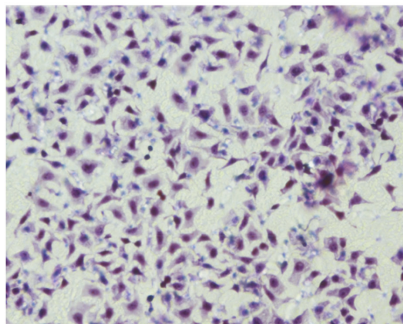
**CORRECTION**

# Correction to LncRNA TPT1-AS1 promotes tumorigenesis and metastasis in epithelial ovarian cancer by inducing TPT1 expression

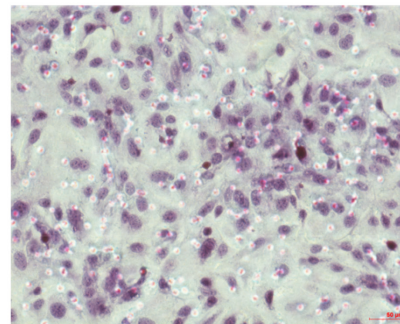
Wu W, Gao H, Li X, et al. LncRNA TPT1-AS1 promotes tumorigenesis and metastasis in epithelial ovarian cancer by inducing TPT1 expression. *Cancer Sci.* 2019;110:1587-1598.

By carefully comparing the original experimental pictures, the author found that for Figure 3B, the migration image of SKOV3 LV-TPT1-AS1 was misselected, and the correct image/Figure 3B is shown here.

The migration image of SKOV3 LV-TPT1-AS1



Wrong image



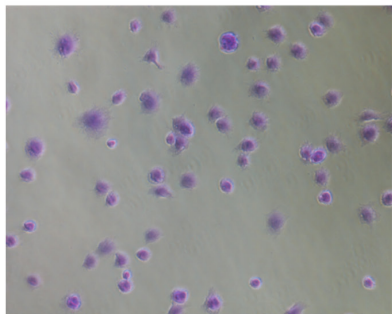
Correct image

This is an open access article under the terms of the [Creative Commons Attribution](https://creativecommons.org/licenses/by/4.0/) License, which permits use, distribution and reproduction in any medium, provided the original work is properly cited.

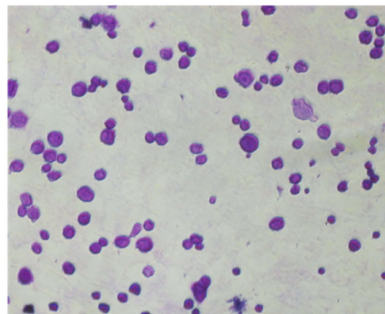
© 2023 The Authors. *Cancer Science* published by John Wiley & Sons Australia, Ltd on behalf of Japanese Cancer Association.

For Figure 5C, the adhesion images of SKOV3 LV-TPT1-AS1+siRNA-TPT1 were misselected. For Figure 5D, the migration image of ES-2 LV-TPT1-AS1+siRNA-TPT1 and invasion image of SKOV3 LV-TPT1-AS1+siRNA-CON were misused. The correct image is shown here.

The adhesion image of SKOV3 LV-TPT1-AS1+siRNA-TPT1

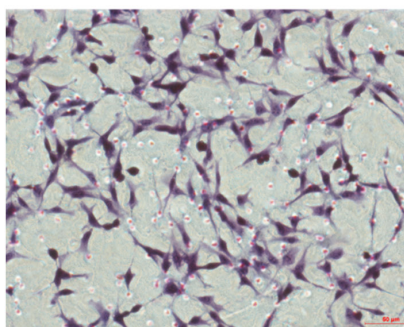


Wrong image

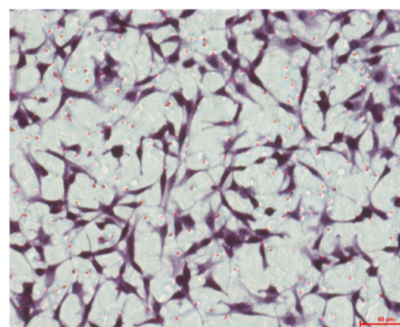


Correct image

The migration image of ES-2 LV-TPT1-AS1+siRNA-TPT1

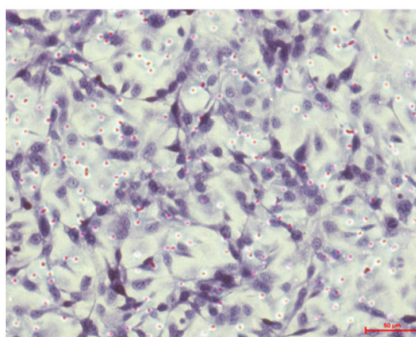


Wrong image

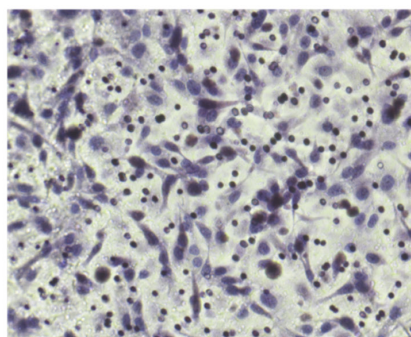


Correct image

The invasion image of SKOV3 LV-TPT1-AS1+siRNA-CON

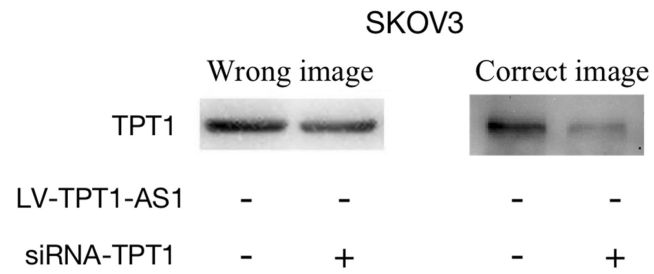


Wrong image



Correct image

Also, by carefully comparing the original experimental pictures, the author found that for Figure 5E, the TPT1 band of SKOV3 LV-CON+siRNA-TPT1 was misselected, and the correct image is shown here.



We apologize for this error.