



HHS Public Access

Author manuscript

Am J Health Promot. Author manuscript; available in PMC 2024 February 19.

Published in final edited form as:

Am J Health Promot. 2024 January ; 38(1): 126–134. doi:10.1177/08901171231210806b.

Quantifying Nature: Introducing NatureScore™ and NatureDose™ as Health Analysis and Promotion Tools

Matthew H. E. M. Browning, PhD^{1,2}, Jared R. Hanley, BA², Christopher R. Bailey, BS², Timothy Beatley, PhD³, Samantha Gailey, PhD^{4,5}, J. Aaron Hipp, PhD⁶, Lincoln R. Larson, PhD⁶, Peter James, PhD⁷, Viniece Jennings, PhD⁸, Marcia Pescador Jimenez, PhD⁹, Peter H. Kahn Jr., PhD¹⁰, Dongying Li, PhD¹¹, Aaron Reuben, PhD¹², Alessandro Rigolon, PhD¹³, Naomi A. Sachs, PhD¹⁴, Amber L. Pearson, PhD¹⁵, Christopher T. Minson, PhD^{2,16}

¹Department of Parks, Recreation and Tourism Management, Clemson University, Clemson, SC, USA

²NatureQuant™, Inc., Eugene, OR, USA

³School of Architecture, University of Virginia, Charlottesville, VA, USA

⁴Department of Forestry, Michigan State University, East Lansing, MI, USA

⁵Space, Health and Community Lab, Charles Stewart Mott Department of Public Health, Michigan State University, East Lansing, MI, USA

⁶Department of Parks, Recreation & Tourism Management, North Carolina State University, Raleigh, NC, USA

⁷Department of Environmental Health, Harvard T. H. Chan School of Public Health, Boston, MA, USA

⁸School of the Environment, Florida Agricultural and Mechanical University, Tallahassee, FL, USA

⁹Department of Epidemiology, Boston University, Boston, MA, USA

¹⁰Department of Psychology & School of Environmental and Forest Sciences, University of Washington, Seattle, WA, USA

¹¹Department of Landscape Architecture and Urban Planning, Texas A&M University, College Station, TX, USA

¹²Department of Psychology & Neuroscience, Duke University, Durham, NC, USA

¹³Department of City & Metropolitan Planning, The University of Utah, Salt Lake City, UT, USA

¹⁴Department of Plant Science and Landscape Architecture, University of Maryland, College Park, MD, USA

Corresponding Author: Christopher T. Minson, NatureQuant™, Inc., Eugene, OR, USA; Department of Human Physiology, University of Oregon, Eugene, OR, USA. minson@uoregon.edu; chris.minson@naturequant.com.

Declaration of Conflicting Interests

The author(s) declared the following potential conflicts of interest with respect to the research, authorship, and/or publication of this article: M.B., J.H., C.B., and C.M. are shareholders in NatureQuant™, which created the NatureScore™ and NatureDose™ tools highlighted in this article.

¹⁵Charles Stewart Mott Department of Public Health, Michigan State University, East Lansing, MI, USA

¹⁶Department of Human Physiology, University of Oregon, Eugene, OR, USA

The Value of Nature Exposure in the 21st Century

Humanity is undergoing a monumental shift. People have rapidly moved from a largely natural, outdoor existence to life in built, urban settings. Most places where people live and work differ dramatically from the ones we occupied for 99.9% of human history, and our current surroundings often physically separate us from the natural world. Most people—over half globally and approximately 4 in 5 in the United States—now live in urban areas,¹ where nearby nature exposure tends to be limited² and unequally distributed across socioeconomic and racial/ethnic subgroups.^{3–6} Adults in higher-income countries spend 80%–90% of their lives sedentary and indoors,^{7–9} with 6 to 8 hours or more spent each day looking at screens.^{10–12} The same is increasingly true for our developing youth,^{10,13,14} who may experience poorer health across their life span as a result.¹⁵

Over the last 30 years, physicians, scientists, and journalists have come to suspect that we are experiencing a “nature deficit disorder,” or “extinction of experience”.^{16–22} With the loss of direct exposure to nature has also come diminished knowledge of where food comes from, an inability to recognize plants and animals, fewer opportunities to experience awe (being in the presence of something vast that transcends current understandings of the world), and a failure to develop positive emotions and empathy toward other people and the non-human world.^{23–25}

In response to growing concerns about this radical shift, scientists worldwide have studied how nature exposure is associated with human health.^{26–31} The links between declining nature exposure and increasing depression, anxiety, heart disease, and premature mortality are increasingly clear.^{26,32} A large and growing body of scientific literature demonstrates that exposure to nature, broadly encompassing green spaces, trees, parks, water bodies, deserts, wilderness areas, wildlife, and more,^{30,33} is associated with measurable and meaningful benefits to dozens of facets of psychological and physical health.^{31,33–35} These benefits can follow from nature exposure in a variety of forms, from passively viewing nature from a park bench to walking along a tree-lined street or practicing shinrin-yoku (“forest bathing”)³⁶ in an urban forest. At a population level, the presence of nature has also been linked to important societal benefits, such as higher property values,³⁷ lower healthcare expenses,^{38,39} lower levels of air pollution, noise, and heat,^{40–43} as well as lower crime rates,^{44,45} enhanced social mobility,⁴⁶ more cohesive communities,^{47–50} and resilience to public health crises, such as the COVID-19 pandemic.^{50,51} These beneficial associations are believed to result from natural areas mitigating environmental hazards, restoring cognitive capacity, reducing stress reactivity, facilitating interactions with commensurate microbiota, and promoting healthy behaviors, such as physical activity and social interaction.^{30,34,52,53}

Like exercise, sleep, and a healthy diet,⁵⁴ nature exposure may well be a necessary health behavior to promote longevity, prevent disease, and enhance wellbeing.^{55–57} “Nature

prescribing” by healthcare providers, a growing movement, can serve as a tool for health promotion with minimal cost, side effects, equipment needs, or training requirements. Few medications or existing interventions can match these qualities. For instance, the American Heart Association’s “Life’s Essential 8” asserts that the following can help achieve an “ideal” cardiovascular health: a healthy diet, 150 minutes of moderate exercise or 75 minutes of vigorous exercise per week, not smoking or vaping, sleeping 7 to 9 hours each night, maintaining a healthy body mass index, and regularly checking and maintaining cholesterol, fasting blood sugar, and blood pressure levels.⁵⁴ Nature exposure might be comparable to several of these recommendations in terms of potential health benefits and come with fewer barriers to starting and maintaining a regular practice.

Assessing and Promoting Nature Exposure With Technology

Utilizing nature to promote health requires convenient and accurate technologies to quantify peoples’ daily exposure levels. Despite growing evidence of the benefits of nature exposure for our increasingly indoor and sedentary society, health practitioners have generally been slow to embrace the concept of nature-based health promotion. One reason is the lack of consensus around a standard measure of nature exposure.^{56,58} How do we know which patients lack regular nature exposure, how much “dose” to prescribe, or how to measure prescription adherence? There are many existing methods to measure nature exposure, but these require expertise, equipment, or underlying data unavailable to most patients and practitioners in the healthcare sector.⁵⁹ Reliable information is needed on both the quantity (frequency and duration) and quality (e.g., levels of “greenness,” “restorativeness,” or “naturalness”) of exposure.^{60–63} These measurement challenges make incorporating nature exposure into healthcare practice difficult.

Advancements in geospatial datasets, exposure assessment, tracking methodology, and big data/machine learning techniques provide opportunities to meet the unmet nature-exposure measurement need. NatureQuant™, a new research and technology institution, was formed with this goal in mind. It recently created 2 technologies that may help overcome existing barriers in quantifying nature exposure and, in turn, expand its use for health promotion.⁶⁴

The first technology is the NatureScore™ dataset and tool, which summarizes the environmental conditions at a given location to generate an overall “NatureScore” value, discussed below. The second technology is the “NatureDose” mobile app, which references NatureScore™ values as an individual moves through time and space to generate an overall metric of nature exposure over time (Figure 1). These technologies are beginning to help researchers refine our understanding of the benefits of nature exposure and catalyze the use of nature as a health promotion tool.^{65,66}

NatureScore™: Quantifying Nature Based on Human Health Associations

NatureScore™ is a patent-pending dataset and tool that estimates the amount and quality of nature and associated environmental conditions at any location (Figure 2) in the United States and Canada, with expansion to Europe and Australia in the near future. For any given location or spatial unit (i.e., census block or tract), NatureQuant analyzed approximately 30 data sets and processed information with up to a 10-m² granularity, ultimately returning

NatureScore™ values ranging from 0 (nature-deprived) to 100 (nature-rich) (Figure 3). These datasets cover a wide range of types of environmental determinants of health, from satellite images of vegetation to land cover and land use classifications, park areas and features, tree canopy cover estimates, air pollution, noise levels, artificial light at night values, buildings, roads, impervious surfaces, and aerial and street view images. Each dataset is weighted and summed to create an overall NatureScore™ value based on the results of machine learning models with environmental exposures as input features and geotagged health outcomes (i.e., mortality rates) as output features.

NatureScore™ is not static and rerun with regularly updated input datasets to account for changes in land cover and use (i.e., urban development or natural disasters) and output variables (i.e., incidence of various diseases and illnesses). The underlying environmental and health datasets are expected to be refined and expanded over time to allow for improved accuracy and coverage. Because of this process, NatureScore™ does not have a fixed algorithm. For example, in its current iteration, NatureScore™ examines 2010–2015 life expectancy estimates in U.S. Census tracts from the U.S. Small-Area Life Expectancy Project (USALEEP)⁶⁷ alongside Sentinel-2A-derived cloud and water-corrected NDVI values at 10-m² resolution; the European Space Agency (ESA) WorldCover land cover product at 10-m² resolution;⁶⁸ park polygons from various governmental geospatial datasets available under the Open Data Commons Open Database License; and Microsoft Maps⁶⁹ data from 2022 for nearly 130,000,000 computer-generated building footprints, among other datasets. Sixty percent of the contribution for a longevity-optimized NatureScore™ might be from vegetation indices. Another 20% might be derived from other nature-based metrics (e.g., visible greenery in street view images, park cover, blue space cover, and nature-based land covers). The remaining 20% might be derived from human modifications on the landscape (e.g., buildings, roads, and impervious surfaces). In contrast, a mental health-optimized NatureScore™ might have a lower weighting for vegetation indices and higher weighting for datasets with other natural and built features.

NatureDose™: Quantifying Nature Exposure With a Passive Smartphone App

NatureDose™ is a mobile smartphone application that passively monitors how many minutes a person spends indoors, outdoors, and outdoors in nature (Figure 4). The app uses the smartphone's sensors, geolocation from satellite-derived geographic position system (GPS) coordinates, and NatureScore™ dataset to determine where users are located, whether inside or outside, and how much nature is within a 1-km buffer.

When a user is determined to be outdoors and in a designated natural area (i.e., park, wilderness, or on a river), the app assigns full nature exposure time credit to the user. When a user is outdoors and not in a designated natural area, the app assigns only partial nature exposure time credit. Additionally, based on the accelerometer and other smartphone sensors, the app determines when users are in a car or other motorized vehicle. No NatureDose™ time credit is given when these vehicles are in motion. Other forms of transportation, like walking or bicycling, earn NatureDose™ credit. All time in nature (outside of motor vehicles) is counted toward the weekly total, including passive forms (i.e., sitting on a park bench) and active forms (e.g., walking along a tree-lined street or manual

labor outdoors). NatureDose also provides an integration for Strava, a popular geospatial exercise-tracking app, to show users the average NatureScore™ value for their recorded activity and the number of minutes earned to their NatureDose™ weekly score.

NatureDose™ also allows users to set a weekly goal (in minutes) for time spent outdoors in nature and then tracks the users' progress toward the goal. Default options are 30, 60, and 120 min/wk. (These values are derived from research on associations between nature dose levels and general health,⁷⁰ depression and blood pressure,⁷¹ stress recovery,⁷² and other forms of psychological and physiological markers of well-being.⁷³) The app can send push notifications when the goal is met and includes language on the health benefits of nature to encourage going outdoors. The complete terms of use and uses of data are available online (<https://www.naturequant.com/terms-of-use/>).

The app provides several opportunities for clinicians, researchers, and policymakers. For clinicians, the app allows users and prescribers to set and monitor goals for time in nature each week. The app also allows baseline measures of time in nature before a “nature prescription.”

For researchers, the app allows for the evaluation of baseline nature exposure levels before and after nature-based interventions and complements other common ways to estimate nature exposure for study members, such as greenness around homes, schools, and offices.^{58,59} The app determines how user reports of time in nature and perceived nature deficiencies⁷⁴ correspond to objective measures of these phenomena. The app's data on nature exposure can be richer, more nuanced, and personalized than other common techniques, such as estimating exposure around the home. Thus, the app's data can be linked to measures of objective and perceived health, enabling researchers to understand further the relationships linking nature and health. Since the app provides information on time spent outdoors in designated natural areas vs outdoors in nature-deprived areas, researchers can understand how the richness of nature enhances other health-promoting behaviors. For example, physical activity in nature-rich areas may contribute more to perceived or objective health than indoors or outdoors with poor environmental conditions (i.e., low NatureScore™ values).

The app can also advance our understanding of disparities in high-quality parks and vegetation by socioeconomic status³ or historic redlining⁴ through evidence of disparities in nature visitation rates across socioeconomic status. Understanding nature-visit disparities may enable targeted nature-based health interventions where natural spaces are accessible but usage amongst disadvantaged populations is low. This understanding can also guide decision-making around where to allocate resources to create new parks or improve or expand existing parks based on residents' nature doses.

To date, the app has been used in completed health studies in Oregon⁶⁶ and South Carolina⁶⁵ with numerous other studies underway. Studies have found that NatureDose™-measured nature exposure was associated with lowered stress levels⁶⁶ and improved positive mood states,⁶⁵ as reported in survey responses among college students. Trials where healthcare providers are “prescribing” time outdoors in nature and requesting participants monitor

exposure using the app are being conducted in Vermont,⁷⁵ Texas, and Oregon. Researchers and clinicians are also pursuing funding for studies to use the app and NatureScore™ technology to monitor participants' environmental exposures and health outcomes.

Limitations and Future Directions

NatureScore™ and NatureDose™ have several limitations and opportunities for improvement that should be considered when using them to quantify nature. While representing nature with a single metric makes NatureScore™ easy to use and interpret, this reductionist approach raises several questions. Singular metrics for complex topics like nature exposure or economic performance (i.e., gross domestic product [GDP]) are prone to miss important parameters that should be considered.^{76,77} Over-reliance on these metrics may lead to inadequately informed decisions in policy and practice.⁷⁶ Relatedly, the underlying data and algorithms in NatureScore™ are unlikely to fully represent the contextual and individual factors that determine whether a specific person benefits from nature at a specific location. NatureScore™ input datasets are correlated with health outcomes at nationwide scales. Local variations in the types of nature most strongly linked to health may vary. For instance, elements in deserts like sand or rock have less-established benefits for large populations³³ and are weighted lower in the dataset. For desert residents, however, these elements may be just as health-promoting as green vegetation, assuming they are perceived as non-threatening.^{78–80} The literature is not yet clear on the nonvisual elements of nature that may benefit human health, such as phytoncides (volatile compounds produced by certain trees), smells, natural sounds such as bird songs, and tactile stimulation.⁸¹ Most data used to calculate NatureScore™ values are based on remote sensing, street view imagery, and other visual representations of nature. Aspects associated with other sensory inputs, such as biodiversity for birdsong or forest composition for phytoncides, are not directly measured. Additionally complicating the potential health benefits of myriad types of nature is the potential for individual-level moderators, such as feelings of nature connectedness, childhood experiences, and comfort with the diurnal and seasonal variations in climate and vegetative color and features where an individual lives.

NatureQuant™ technologies also have not undergone comprehensive validation studies with existing nature exposure metrics. One exception is a nationwide, tract-level comparison of NatureScore™ with 3 commonly used nature exposure metrics.⁶ Both NatureScore™ and NDVI showed patterns of more nature in tracts with less poverty, lower shares of non-Hispanic Whites, and higher incomes. However, sociodemographic patterns for blue space cover and park cover differed dramatically from NatureScore™. There is an urgent need for studies with the general public to quantify how much “nature” is around where they live, work, learn, and travel and compare these assessments with NatureScore™ values. These data would allow a better understanding of what components of nature that NatureScore™ may represent most strongly. Another opportunity to validate NatureScore™ would be to compare its values with expert assessments of perceived neighborhood restorativeness, as done with the normalized difference vegetation index (NDVI).⁶¹ However, as discussed above, NatureScore™ is a dynamic system with updates to its dataset algorithms based on the available data and the health outcome of greatest interest. Validation studies will be

needed on NatureScore™ over time when variations on the product for specific use cases become available.

Similarly, the NatureDose™ app has not been compared to other ways of measuring dynamic exposure, such as GPS tracking, accelerometers, automated cameras, and self-report data. Its inside vs outside calculation is vulnerable to exposure misclassification since it partially relies on building footprint spatial data that can become outdated in areas of development and growth. In these circumstances, users may earn nature exposure minutes when they are outside but in areas that no longer have natural elements, or earn nature exposure minutes when they are indoors. Meanwhile, nature exposure minutes cannot be earned without the user carrying a smartphone, which is not always feasible or desired during nature-based activities. Limitations to smartphone battery life and data also extend to the app.

Technology and Nature Working Together for Health Promotion

Nature and technology are often opposing forces.^{82–86} In our modern “always connected” society, however, technology may now be useful for helping us re-engage with nature. The NatureScore™ and NatureDose™ tools have been created to help assist in that effort by attempting to quantify nature in a reliable, scalable, and accessible way. We hope that these and other similar efforts help us chart a path toward a healthier, more nature-rich future.

Acknowledgments

The authors thank Stephen van den Eeden, Howard Frumkin, Dexter Locke, and Peter Newman for their critical feedback on an early version of the paper.

Funding

The author(s) received no financial support for the research, authorship, and/or publication of this article.

References

1. United Nations. World Urbanization Prospects; 2019. <https://esa.un.org/unpd/wup/publications/files/wup2014-highlights.pdf>
2. Cox DTC, Shanahan DF, Hudson HL, Fuller RA, Gaston KJ. The impact of urbanisation on nature dose and the implications for human health. *Landsc Urban Plan.* 2018;179:72–80. doi:10.1016/j.landurbplan.2018.07.013
3. Rigolon A A complex landscape of inequity in access to urban parks: A literature review. *Landsc Urban Plan.* 2016;153:160–169. doi:10.1016/j.landurbplan.2016.05.017
4. Nardone A, Rudolph KE, Morello-Frosch R, Casey JA. Redlines and greenspace: The relationship between historical redlining and 2010 greenspace across the United States. *Environ Health Perspect.* 2021;129(1):017006–017009. doi:10.1289/ehp7495 [PubMed: 33502254]
5. Allegretto G, Kendal D, Flies EJ. A systematic review of the relationship between urban forest quality and socioeconomic status or race. *Urban For Urban Green.* 2022;74:127664. doi:10.1016/j.ufug.2022.127664
6. Klompmaker JO, Hart JE, Bailey CR, et al. Racial, ethnic, and socioeconomic disparities in multiple measures of blue and green spaces in the United States. *Environ Health Perspect.* 2023;131(1):017007. doi:10.1289/ehp11164 [PubMed: 36696102]
7. Beyer K, Szabo A, Hoormann K, Stolley M. Time spent outdoors, activity levels, and chronic disease among American adults. *J Behav Med.* 2018;41(4):494–503. doi:10.1007/s10865018-9911-1 [PubMed: 29383535]

8. Schweizer C, Edwards RD, Bayer-Oglesby L, et al. Indoor time–microenvironment–activity patterns in seven regions of Europe. *J Expo Sci Environ Epidemiol.* 2007;17(2):170–181. doi:10.1038/sj.jes.7500490 [PubMed: 16721413]
9. Klepeis NE, Nelson WC, Ott WR, et al. The National Human Activity Pattern Survey (NHAPS): A resource for assessing exposure to environmental pollutants. *J Expo Anal Environ Epidemiol.* 2001;11(3):231–252. doi:10.1038/sj.jea.7500165 [PubMed: 11477521]
10. solitaired.com. Smartphone Usage and Screen Time Statistics 2021 - Solitaired. Published 2021. <https://solitaired.com/screen-time-statistics-2021>. Accessed August 4, 2023.
11. Pandya A, Lodha P. Social connectedness, excessive screen time during COVID-19 and mental health: A review of current evidence. *Front Hum Dyn.* 2021;3:684137. doi:10.3389/fhumd.2021.684137
12. Wagner BE, Folk AL, Hahn SL, Barr-Anderson DJ, Larson N, Neumark-Sztainer D. Recreational screentime behaviors during the COVID-19 pandemic in the U.S.: A mixed-methods study among a diverse population-based sample of emerging Adults. *Int J Environ Res Public Health.* 2021;18(9):4613. doi:10.3390/ijerph18094613 [PubMed: 33925317]
13. Larson LR, Szczytko R, Bowers EP, Stephens LE, Stevenson KT, Floyd M. Outdoor time, screen time, and connection to nature: Troubling trends among rural youth? *Environ Behav.* 2018;26(3):1–26. doi:10.1177/0013916518806686
14. Tripathi M, Mishra SK. Screen time and adiposity among children and adolescents: A systematic review. *J Public Health.* 2019;37(4):436. doi:10.1007/s10389-019-01043-x
15. Marciano L, Camerini AL, Morese R. The developing brain in the digital era: A scoping review of structural and functional correlates of screen time in adolescence. *Front Psychol.* 2021; 12:671817. doi:10.3389/fpsyg.2021.671817 [PubMed: 34512437]
16. Soga M, Gaston KJ. Extinction of experience: The loss of human–nature interactions. *Front Ecol Evol.* 2016;14(2):94–101. doi:10.1002/fee.1225
17. Cazalis V, Loreau M, Barragan-Jason G. A global synthesis of trends in human experience of nature. *Front Ecol Environ.* Published online 2022. doi:10.1002/fee.2540
18. Alvarez EN, Garcia A, Le P. A review of Nature Deficit Disorder (NDD) and its disproportionate impacts on Latinx populations. *Environ Dev.* 2022;43:100732. doi:10.1016/j.envdev.2022.100732
19. Louv R *Last Child in the Woods*. Chapel Hill: Algonquin Books; 2008.
20. Pyle RM. *The Thunder Tree: Lessons from an Urban Wildland*. Boston, MA USA: Houghton Mifflin; 1993.
21. Kahn PH. Children’s affiliations with nature: Structure, development, and the problem of environmental generational amnesia. In: Kahn PH, Kellert SR, eds. *Children and Nature: Psychological, Sociocultural, and Evolutionary Investigations*. Cambridge, Mass: MIT Press; 2002:93–116.
22. Kahn PH. Environmental generational amnesia. In: Fleischner TL, ed. *Nature, Love, Medicine: Essays on Wildness and Wellness*. Salt Lake City: Torrey House Press; 2017:189–199.
23. Beery T, Olafsson AS, Gentin S, et al. Disconnection from nature: Expanding our understanding of human–nature relations. *People Nat.* Published online 2023. doi:10.1002/pan3.10451
24. Soga M, Gaston KJ. Global synthesis reveals heterogeneous changes in connection of humans to nature. *One Earth.* 2023; 6(2):131–138. doi:10.1016/j.oneear.2023.01.007
25. Keltner D *Awe: The New Science of Everyday Wonder and How It Can Transform Your Life* New York: Penguin Publishing Group; 2023. <https://www.google.com/books/edition/Awe/bpVnEAAAQBAJ?hl=en&gbpv=1&dq=info:tRW1FzL4QnsJ:scholar.google.com&pg=PA3&printsec=frontcover>. Accessed September 23, 2023.
26. Zhang J, Yu Z, Zhao B, Sun R, Vejre H. Links between greenspace and public health: A bibliometric review of global research trends and future prospects from 1901 to 2019. *Environ Res Lett.* 2020;15(6):063001–063037. doi:10.1088/1748-9326/ab7f64
27. Wang H, Xie J, Luo S, et al. Exploring the interplay between landscape planning and human well-being: A scientometric review. *Land.* 2023;12(7):1321. doi:10.3390/land12071321

28. Rodríguez-Redondo Y, Denche-Zamorano A, Muñoz-Bermejo L, et al. Bibliometric analysis of nature-based therapy research. *Healthcare*. 2023;11(9):1249. doi:10.3390/healthcare11091249 [PubMed: 37174792]
29. Farkas JZ, Hoyk E, de Morais MB, Csomós G. A systematic review of urban green space research over the last 30 years: A bibliometric analysis. *Heliyon*. 2023;9:e13406. doi:10.1016/j.heliyon.2023.e13406 [PubMed: 36816272]
30. Hartig T, Mitchell RJ, de Vries S, Frumkin H. Nature and health. *Annu Rev Public Health*. 2014;35(1):207–228. doi:10.1146/annurev-publhealth-032013-182443 [PubMed: 24387090]
31. Twohig-Bennett C, Jones A. The health benefits of the great outdoors: A systematic review and meta-analysis of greenspace exposure and health outcomes. *Environ Res*. 2018;166:628–637. doi:10.1016/j.envres.2018.06.030 [PubMed: 29982151]
32. Yang BY, Zhao T, Hu LX, et al. Greenspace and human health: An umbrella review. *Innovation*. 2021;2(4):100164. doi:10.1016/j.xinn.2021.100164 [PubMed: 34622241]
33. Li H, Browning MHEM, Rigolon A, et al. Beyond “bluespace” and “greenspace”: A narrative review of possible health benefits from exposure to other natural landscapes. *Sci Total Environ*. 2023;856(Pt 2):159292. doi:10.1016/j.scitotenv.2022.159292 [PubMed: 36208731]
34. Marselle MR, Hartig T, Cox DTC, et al. Pathways linking biodiversity to human health: A conceptual framework. *Environ Int*. 2021;150:106420. doi:10.1016/j.envint.2021.106420 [PubMed: 33556912]
35. Holland WH, Powell RB, Thomsen JM, Monz CA. A systematic review of the psychological, social, and educational outcomes associated with participation in wildland recreational activities. *J Outdoor Recreat Educ Leadersh*. 2018;10(3):197–225. doi:10.18666/jorel-2018-v10-i3-8382
36. Miyazaki Y. *Walking in the Woods: Go Back to Nature with the Japanese Way of Shinrin-Yoku*. London: Aster; 2021.
37. Holt JR, Borsuk ME. Using Zillow data to value green space amenities at the neighborhood scale. *Urban For Urban Green*. 2020;56:126794. doi:10.1016/j.ufug.2020.126794
38. Eeden SKVD, Browning MHEM, Becker DA, et al. Association between residential green cover and direct healthcare costs in Northern California: An individual level analysis of 5 million persons. *Environ Int*. 2022;163:107174. doi:10.1016/j.envint.2022.107174 [PubMed: 35306251]
39. Becker DA, Browning MHEM, Kuo M, Eeden SKVD. Is green land cover associated with less health care spending? Promising findings from county-level medicare spending in the continental United States. *Urban For Urban Green*. 2019;41:39–47. doi:10.1016/j.ufug.2019.02.012
40. Diener A, Mudu P. How can vegetation protect us from air pollution? A critical review on green spaces’ mitigation abilities for air-borne particles from a public health perspective - with implications for urban planning. *Sci Total Environ*. 2021;796: 148605. doi:10.1016/j.scitotenv.2021.148605 [PubMed: 34271387]
41. Yu Z, Yang G, Zuo S, Jrgensen G, Koga M, Vejre H. Critical review on the cooling effect of urban blue-green space: A threshold-size perspective. *Urban For Urban Green*. 2020;49: 126630. doi:10.1016/j.ufug.2020.126630
42. Renterghem TV, Forssén J, Attenborough K, Acoustics PJA. Using natural means to reduce surface transport noise during propagation outdoors. *Landsc Urban Plan*. 2015;92(C):86–101. doi:10.1016/j.apacoust.2015.01.004
43. Nieuwenhuijsen MJ. New urban models for more sustainable, liveable and healthier cities post covid19; reducing air pollution, noise and heat island effects and increasing green space and physical activity. *Environ Int*. 2021;157:106850. doi:10.1016/j.envint.2021.106850 [PubMed: 34531034]
44. Bogar S, Beyer K. Green space, violence, and crime: A systematic review. *Trauma Violence Abuse*. 2015;17:160–171. doi:10.1177/1524838015576412 [PubMed: 25824659]
45. Shepley M, Sachs N, Sadatsafavi H, Fournier C, Peditto K. The impact of green space on violent crime in urban environments: An evidence synthesis. *Int J Environ Res Public Health*. 2019;16(24):5119. doi:10.3390/ijerph16245119 [PubMed: 31847399]
46. Browning MHEM, Rigolon A. Could nature help children rise out of poverty? Green space and future earnings from a cohort in ten U.S. cities. *Environ Res*. 2019;176:108449. doi:10.1016/j.envres.2019.04.016 [PubMed: 31202477]

47. Wan C, Shen GQ, Choi S. Underlying relationships between public urban green spaces and social cohesion: A systematic literature review. *City Cult Soc.* 2021;24:100383. doi:10.1016/j.ccs.2021.100383
48. Putra IGNE, Astell-Burt T, Cliff DP, Vella SA, John EE, Feng X. The relationship between green space and prosocial behaviour among children and adolescents: A systematic review. *Front Psychol.* 2020;11:1175. doi:10.3389/fpsyg.2020.00859 [PubMed: 32754075]
49. Leavell MA, Leiferman JA, Gascon M, Braddick F, Gonzalez JC, Litt JS. Nature-based social prescribing in urban settings to improve social connectedness and mental well-being: A review. *Curr Environ Heal Rep.* 2019;6(4):297–308. doi:10.1007/s40572-019-00251-7
50. Labib SM, Browning MHEM, Rigolon A, Helbich M, James P. Nature's contributions in coping with a pandemic in the 21st century: A narrative review of evidence during COVID-19. *Sci Total Environ.* 2022;833:155095. doi:10.1016/j.scitotenv.2022.155095 [PubMed: 35395304]
51. Patwary MM, Dzhambov A, Disha AS, et al. Exposure to nature during the COVID-19 pandemic and the associated effect on mental health: A systematic review with meta-analysis. *Lancet Planet Health.* 2022;6:S20. doi:10.1016/s2542-5196(22)00282-0
52. Markevych I, Schoierer J, Hartig T, et al. Exploring pathways linking greenspace to health: Theoretical and methodological guidance. *Environ Res.* 2017;158:301–317. doi:10.1016/j.envres.2017.06.028 [PubMed: 28672128]
53. Kuo M How might contact with nature promote human health? Promising mechanisms and a possible central pathway. *Front Psychol.* 2015;6(e003094):1093. doi:10.3389/fpsyg.2015.01093 [PubMed: 26379564]
54. American Heart Association. Life's essential 8TM. <https://www.heart.org/en/healthy-living/healthy-lifestyle/lifes-essential-8>. Accessed August 20, 2023.
55. Nguyen PY, Astell-Burt T, Rahimi-Ardabili H, Feng X. Effect of nature prescriptions on cardiometabolic and mental health, and physical activity: A systematic review. *Lancet Planet Health.* 2023;7(4):e313–e328. doi:10.1016/s2542-5196(23)00025-6 [PubMed: 37019572]
56. Kondo MC, Oyekanmi KO, Gibson A, South EC, Bocarro J, Hipp JA. Nature prescriptions for health: A review of evidence and research opportunities. *Int J Environ Res Public Health.* 2020;17(12):4213. doi:10.3390/ijerph17124213 [PubMed: 32545651]
57. Astell-Burt T, Hipp JA, Gatersleben B, et al. Need and interest in nature prescriptions to protect cardiovascular and mental health: A nationally-representative study with insights for future randomised trials. *Heart Lung Circ.* Published online 2023. doi:10.1016/j.hlc.2022.11.008
58. Holland I, DeVill NV, Browning MHEM, et al. Measuring nature contact: A narrative review. *Int J Environ Res Publ Health.* 2021;18(8):4092. doi:10.3390/ijerph18084092
59. Browning MHEM, Locke D, Konijnendijk C, et al. Measuring the 3–30–300 rule to help cities meet nature access thresholds. *EcoEvoRxiv.* Published online 2023. doi:10.32942/x2f60q
60. Sullivan WC, Frumkin H, Jackson RJ, Chang CY. Gaia meets Asclepius: Creating healthy places. *Landsc Urban Plan.* 2014; 127:182–184. doi:10.1016/j.landurbplan.2014.03.005
61. Rhew IC, Stoep AV, Kearney A, Smith NL, Dunbar MD. Validation of the normalized difference vegetation index as a measure of neighborhood greenness. *Ann Epidemiol.* 2011;21(12):946–952. doi:10.1016/j.annepidem.2011.09.001 [PubMed: 21982129]
62. Rüdissler J, Tasser E, Tappeiner U. Distance to nature—a new biodiversity relevant environmental indicator set at the landscape level. *Ecol Indicat.* 2012;15(1):208–216. doi:10.1016/j.ecolind.2011.09.027
63. Nguyen PY, Astell-Burt T, Rahimi-Ardabili H, Feng X. Green space quality and health: A systematic review. *Int J Environ Res Pu.* 2021;18(21):11028. doi:10.3390/ijerph182111028
64. Astell-Burt T, Pritchard T, Francois M, et al. Nature prescriptions should address motivations and barriers to be effective, equitable, and sustainable. *Lancet Planet Health.* 2023;7(7):e542–e543. doi:10.1016/s2542-5196(23)00108-0 [PubMed: 37437995]
65. Bardhan M, Zhang K, Browning MHEM, et al. Time in nature is associated with higher levels of positive mood: Evidence from the 2023 NatureDose™ student survey. *J Environ Psychol.* Published online 2023:102083. doi:10.1016/j.jenvp.2023.102083

66. Vermeesch AL, Coro A, Mattes K, Ostendorff D, Olson ET, Garrigues L. Nature-Based feasibility intervention to influence mitigation strategies for perceived stress. *Int J Environ Res Public Health*. 2022;19:12277. [PubMed: 36231578]
67. Centers for Disease Control and Prevention. U.S. Small-Area Life Expectancy Estimates Project - USALEEP. Published 2020. <https://www.cdc.gov/nchs/nvss/usaleep/usaleep.html>. Accessed September 16, 2023.
68. Zanaga D, van de Kerchove R, Daems D, et al. ESA WorldCover 10 M 2021 V200. Published 2023. doi:10.5281/zenodo.7254221. Accessed September 25, 2023.
69. Maps Microsoft. GitHub - microsoft/USBuildingFootprints: Computer Generated Building Footprints for the United States Published 2018. <https://github.com/Microsoft/USBuildingFootprints>. Accessed September 16, 2023.
70. White MP, Alcock I, Grellier J, et al. Spending at least 120 minutes a week in nature is associated with good health and wellbeing. *Sci Rep*. 2019;9(1):7730. doi:10.1038/s41598-019-44097-3 [PubMed: 31197192]
71. Shanahan DF, Bush R, Gaston KJ, et al. Health benefits from nature experiences depend on dose. *Sci Rep*. 2016;6(1):28551. doi:10.1038/srep28551 [PubMed: 27334040]
72. Hunter MR, Gillespie BW, Chen SYP. Urban nature experiences reduce stress in the context of daily life based on salivary biomarkers. *Front Psychol*. 2019;10:722. doi:10.3389/fpsyg.2019.00722 [PubMed: 31019479]
73. Meredith GR, Rakow DA, Eldermire ERB, Madsen CG, Shelley SP, Sachs NA. Minimum time dose in nature to positively impact the mental health of college-aged students, and how to measure it: A scoping review. *Front Psychol*. 2020;10:2942. doi:10.3389/fpsyg.2019.02942 [PubMed: 31993007]
74. Dong X, Geng L. Nature deficit and mental health among adolescents: A perspectives of conservation of resources theory. *J Environ Psychol*. 2023;87:101995. doi:10.1016/j.jenvp.2023.101995
75. Price M, Hidalgo JE, Bird Y, et al. A large clinical trial to improve well-being during the transition to college using wearables: The lived experiences measured using rings study. *Contemp Clin Trials*. 2023;133:107338. doi:10.1016/j.cct.2023.107338 [PubMed: 37722484]
76. Stiglitz JE, Fitoussi JP, Durand M. Beyond GDP: Measuring What Counts for Economic and Social Performance | En | OECD. Paris: Organisation for Economic Cooperation and Development; 2018. <https://www.oecd.org/social/beyond-gdp-9789264307292-en.htm>. Accessed September 17, 2023.
77. Eisenman TS, Churkina G, Jariwala SP, et al. Urban trees, air quality, and asthma: An interdisciplinary review. *Landsc Urban Plan*. 2019;187:47–59. doi:10.1016/j.landurbplan.2019.02.010
78. Olvera-Alvarez HA, Browning MHEM, Neophytou AM, Bratman GN. Associations of residential brownness and greenness with fasting glucose in young healthy adults living in the desert. *Int J Environ Res Public Health*. 2021;18(2):520. doi:10.3390/ijerph18020520 [PubMed: 33435223]
79. Browning MHEM, Alvarez HAO. Editorial commentary: Scanning for threats and natural environments giving our reptilian brains a break. *Trends Cardiovasc Med*. 2019;30(4):247–248. doi:10.1016/j.tcm.2019.07.006 [PubMed: 31353095]
80. Yin J, Bratman GN, Browning MHEM, Spengler JD, Olvera-Alvarez HA. Stress recovery from virtual exposure to a brown (desert) environment versus a green environment. *J Environ Psychol*. 2022;81:101775. doi:10.1016/j.jenvp.2022.101775
81. Franco LS, Shanahan DF, Fuller RA. A review of the benefits of nature experiences: More than meets the eye. *Int J Environ Res Public Health*. 2017;14(8):864. doi:10.3390/ijerph14080864 [PubMed: 28763021]
82. Li J, Nassauer JI. Technology in support of nature-based solutions requires understanding everyday experiences. *Ecol Soc*. 2021;26(4). doi:10.5751/es-12838-260435
83. Kahn PH, Friedman B, Gill B, et al. A plasma display window? The shifting baseline problem in a technologically mediated natural world. *J Environ Psychol*. 2008;28(2):192–199. doi:10.1016/j.jenvp.2007.10.008

84. Kahn PH, Severson RL, Ruckert JH. The human relation with nature and technological nature. *Curr Dir Psychol Sci.* 2009; 18(1):37–42. doi:10.1111/j.1467-8721.2009.01602.x
85. Browning MHEM, Saeidi-Rizi F, McAnirlin O, Yoon H, Pei Y. The role of methodological choices in the effects of experimental exposure to simulated natural landscapes on human health and cognitive performance: A systematic review. *Environ Behav.* 2020;53(7):687–731. doi:10.1177/0013916520906481
86. Kahn PH. *Technological Nature: Adaption and the Future of Human Life.* Cambridge, Mass: MIT Press; 2011.



Figure 1. New tools to quantify nature at any location in the United States (NatureScore™, left panel) and an individual's daily or weekly exposure to nature (NatureDose™, right panel). The app provides NatureScore™ values to users within a 1-km buffer, although values can be calculated at smaller distances or averaged across spatial units (i.e., census tracts).

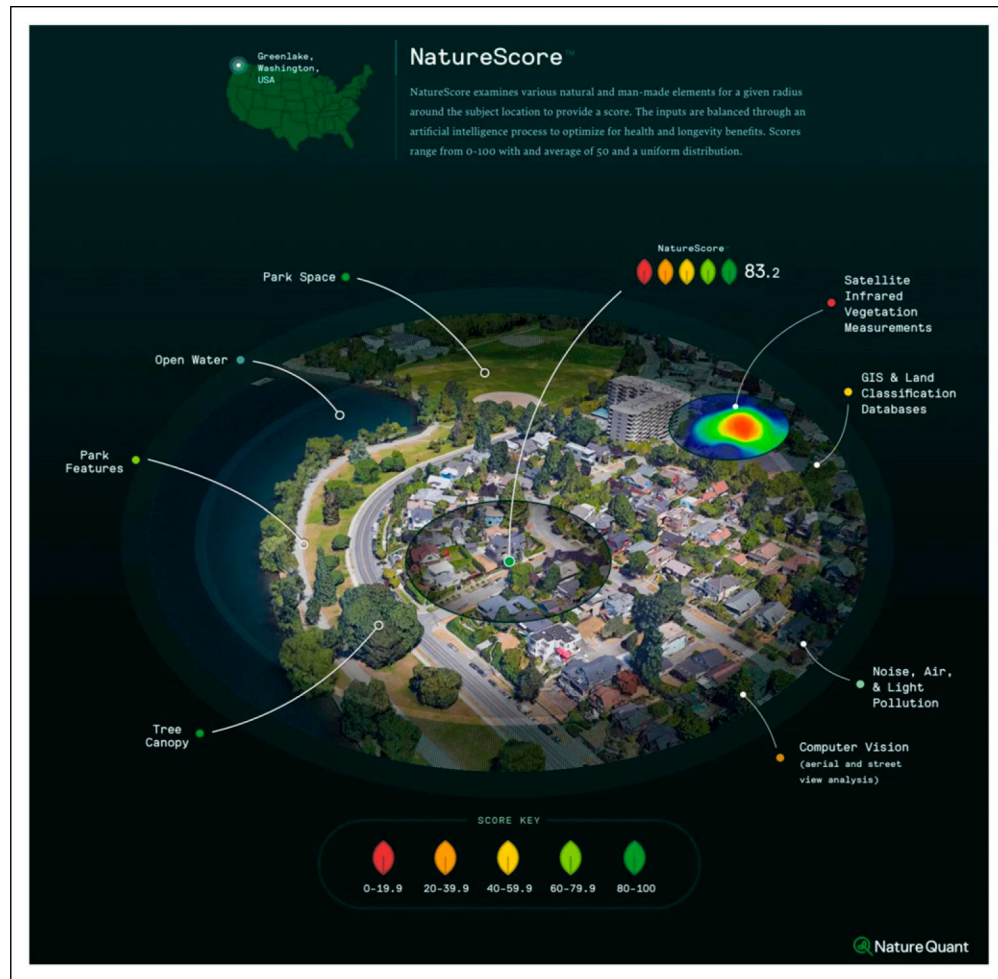


Figure 2. NatureScore™ attempts to quantify the amount and quality of nature and the environmental conditions at any location by combining over 30 environmental and human-health datasets with machine learning.

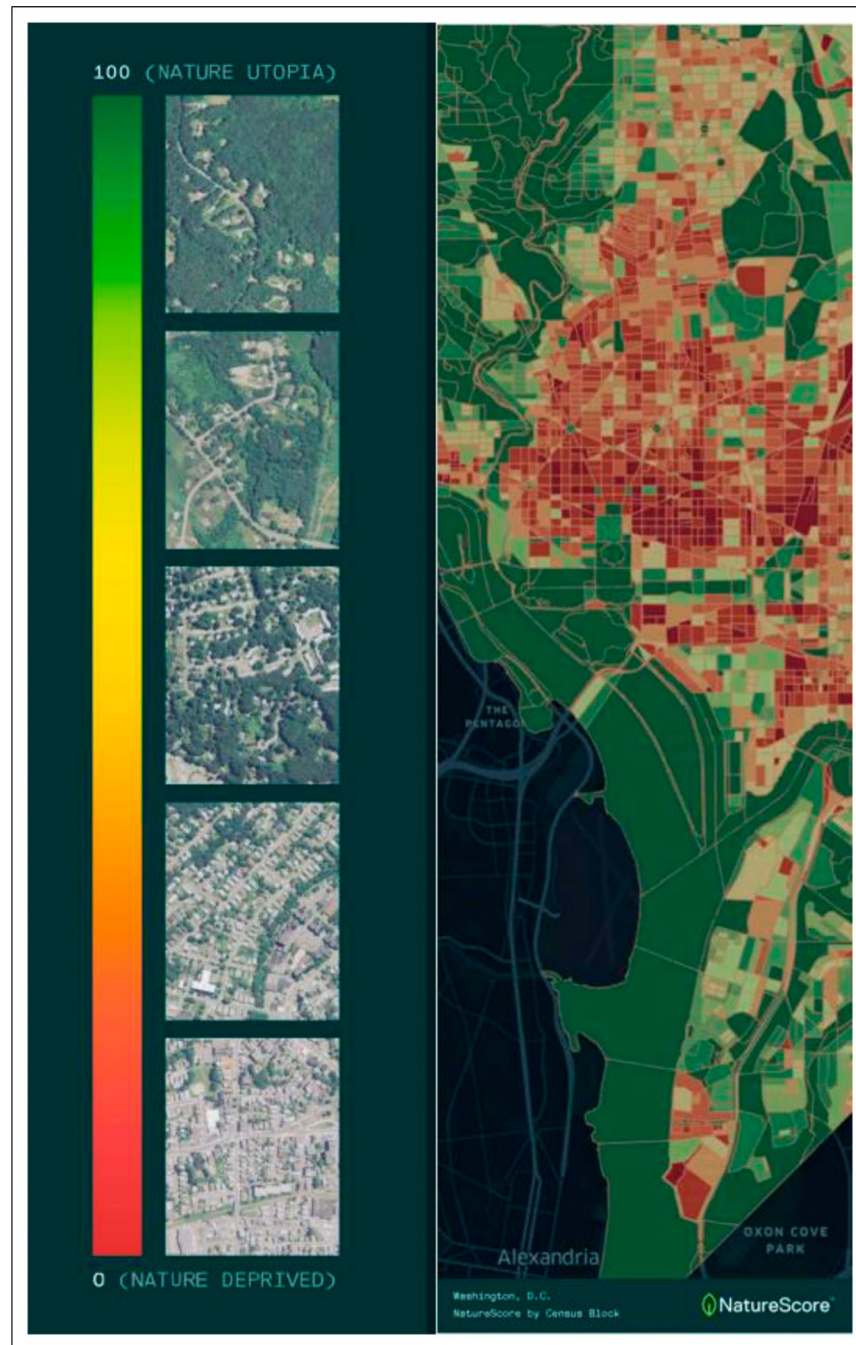


Figure 3. NatureScore™ values range from 0 (nature-deprived) to 100 (nature-rich) and can be calculated within buffers at any location (i.e., 300-m around homes) or averaged across spatial units (i.e., census tract).

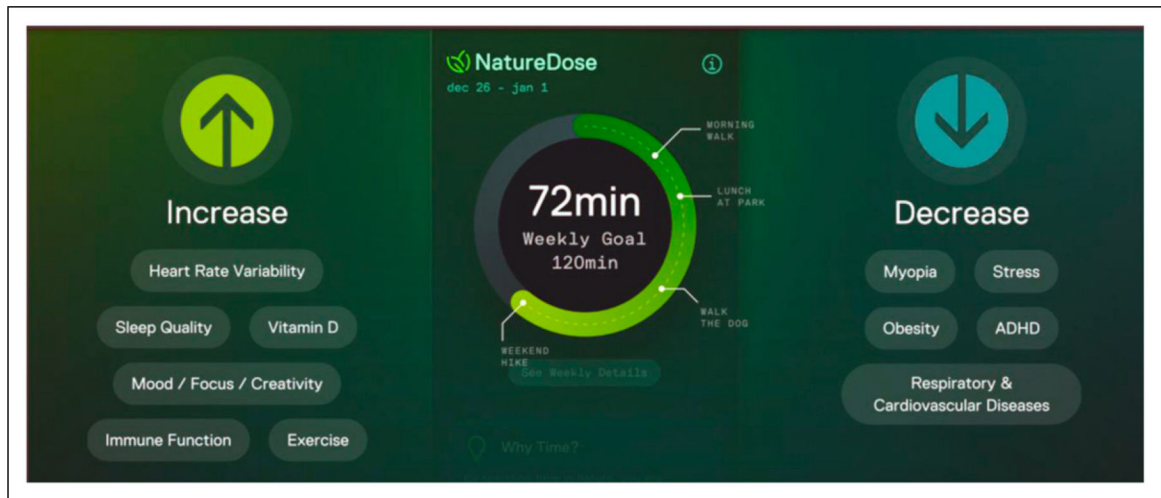


Figure 4. Screenshots from the NatureDose™ smartphone app, which attempts to monitor the number of minutes per week outdoors in nature (center panel) as well as indoors and outdoors (not in nature); the app also reports the potential health benefits of nature exposure to its users (left and right panels).