

# Author Correction: A heterotypic assembly mechanism regulates CHIP E3 ligase activity

Aniruddha Das <sup>ID</sup>, Pankaj Thapa <sup>ID</sup>, Ulises Santiago <sup>ID</sup>, Nilesh Shanmugam <sup>ID</sup>, Katarzyna Banasiak <sup>ID</sup>, Katarzyna Dązbrowska <sup>ID</sup>, Hendrik Nolte <sup>ID</sup>, Natalia A Szulc <sup>ID</sup>, Rose M Gathungu <sup>ID</sup>, Dominik Cysewski <sup>ID</sup>, Marcus Krüeger <sup>ID</sup>, Michał Dadlez <sup>ID</sup>, Marcin Nowotny <sup>ID</sup>, Carlos J Camacho <sup>ID</sup>, Thorsten Hoppe <sup>ID</sup> & Wojciech Pokrzywa <sup>ID</sup>

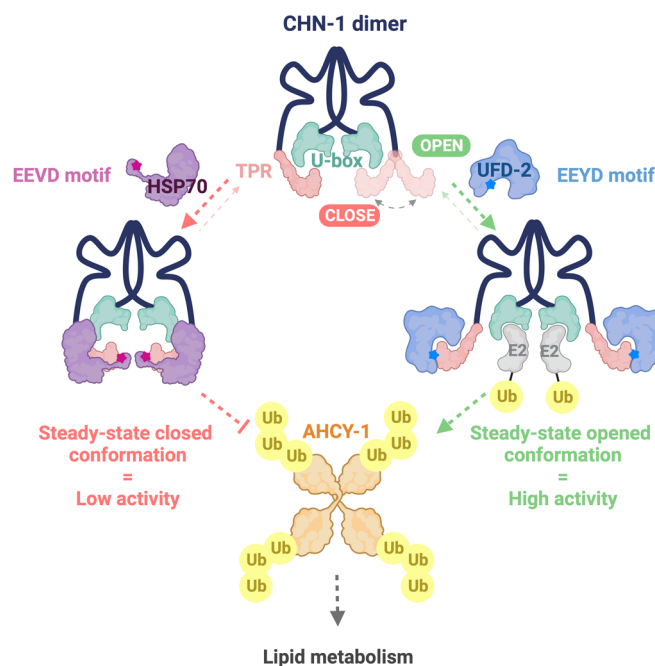
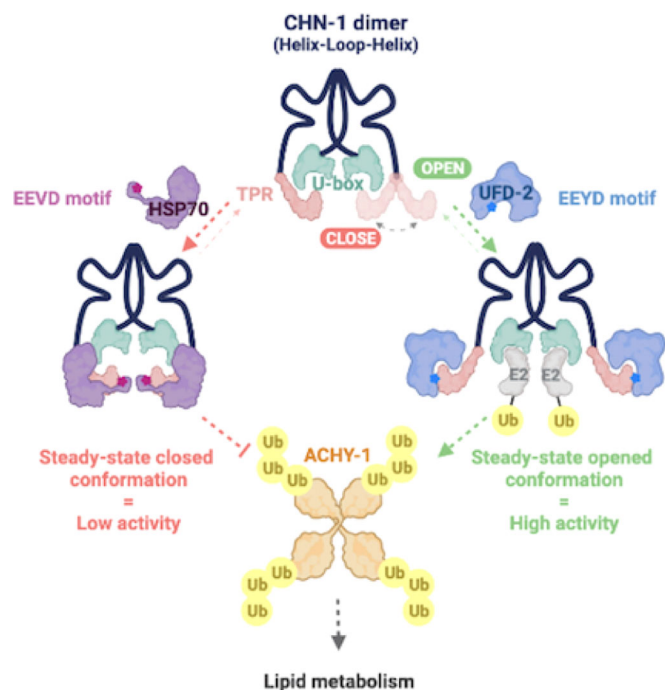
Correction to: *EMBO J* (2022) 41:e109566. <https://doi.org/10.15252/emboj.2021109566> | Published online 22 February 2024

The authors contacted the journal after becoming aware of an error in the terminology of the graphical abstract, the results section of the manuscript and within the Figure 5A figure legend.

Corrected:

The graphical abstract is corrected.

Original:



The Results section is corrected.

The Figure 5A figure legend is corrected.

Page 12, line 12 of the PDF manuscript is corrected from:  
“compared with the ACHY-1 status in wild-type animals (Fig 5C).  
As”

To (Changes in bold):  
“compared with the **AHCY-1** status in wild-type animals (Fig 5C).  
As”

Figure 5A figure legend is corrected from:

“A) Boxplot analysis showing the Z-score of normalized intensities of the 50 LC-MS/MS-identified peptides from ACHY-1 detected in N2 (wild-type), *chn-1(by155)*, *ufd-2(tm1380)*, and *chn-1(by155); ufd-2(tm1380)* mutant worms. The central band of each box is the median value, and the box defines the 25<sup>th</sup> (lower) and 75<sup>th</sup> (higher) quantile. The whiskers represent the minimum and maximum values in the data, excluding outliers. A data point is considered an outlier if the distance to the median is greater than 1.5 \* inter quantile range distance to the median.”

To (Changes in bold):

“A) Boxplot analysis showing the Z-score of normalized intensities of the 50 LC-MS/MS-identified peptides from **AHCY-1** detected in

N2 (wild-type), *chn-1(by155)*, *ufd-2(tm1380)*, and *chn-1(by155); ufd-2(tm1380)* mutant worms. The central band of each box is the median value, and the box defines the 25<sup>th</sup> (lower) and 75<sup>th</sup> (higher) quantile. The whiskers represent the minimum and maximum values in the data, excluding outliers. A data point is considered an outlier if the distance to the median is greater than 1.5 \* inter quantile range distance to the median.”

These changes do not affect the text or conclusions of the article.

**Open Access** This article is licensed under a Creative Commons Attribution 4.0 International License, which permits use, sharing, adaptation, distribution and reproduction in any medium or format, as long as you give appropriate credit to the original author(s) and the source, provide a link to the Creative Commons licence, and indicate if changes were made. The images or other third party material in this article are included in the article's Creative Commons licence, unless indicated otherwise in a credit line to the material. If material is not included in the article's Creative Commons licence and your intended use is not permitted by statutory regulation or exceeds the permitted use, you will need to obtain permission directly from the copyright holder. To view a copy of this licence, visit <http://creativecommons.org/licenses/by/4.0/>.

© The Author(s) 2024