

RESEARCH ARTICLE

Sex differences in brain atrophy in dementia with Lewy bodies

Javier Oltra^{1,2,3}  | Annegret Habich^{3,4} | Christopher G. Schwarz⁵ |
 Zuzana Nedelska⁶ | Scott A. Przybelski⁷ | Anna Inguanzo³ | Patricia Diaz-Galvan⁵ |
 Val J. Lowe⁵ | Ketil Oppedal^{8,9,10} | Maria C. Gonzalez^{8,9,10,11} | Nathalie Philippi^{12,13} |
 Frederic Blanc^{12,13} | Frederik Barkhof^{14,15} | Afina W. Lemstra^{16,17} | Jakub Hort⁶ |
 Alessandro Padovani¹⁸ | Irena Rektorova¹⁹ | Laura Bonanni²⁰ | Federico Massa²¹ |
 Milica G. Kramberger²² | John-Paul Taylor²³ | Jon G. Snædal²⁴ | Zuzana Walker^{25,26} |
 Angelo Antonini²⁷ | Thomas Dierks⁴ | Barbara Segura^{1,2,28} | Carme Junque^{1,2,28} |
 Eric Westman³ | Bradley F. Boeve²⁹ | Dag Aarsland^{8,30} | Kejal Kantarci⁵ |
 Daniel Ferreira^{3,5,31}

Correspondence

Daniel Ferreira, Division of Clinical Geriatrics,
 Center for Alzheimer Research, Department of
 Neurobiology, Care Sciences and Society,
 Karolinska Institutet, Blickagången 16, Neo
 7th floor, 141 83 Huddinge, Stockholm,
 Sweden.
 Email: daniel.ferreira.padilla@ki.se

Abstract

INTRODUCTION: Sex influences neurodegeneration, but it has been poorly investigated in dementia with Lewy bodies (DLB). We investigated sex differences in brain atrophy in DLB using magnetic resonance imaging (MRI).

METHODS: We included 436 patients from the European-DLB consortium and the Mayo Clinic. Sex differences and sex-by-age interactions were assessed through visual atrophy rating scales ($n = 327$; 73 ± 8 years, 62% males) and automated estimations of regional gray matter volume and cortical thickness ($n = 165$; 69 ± 9 years, 72% males). **RESULTS:** We found a higher likelihood of frontal atrophy and smaller volumes in six cortical regions in males and thinner olfactory cortices in females. There were significant sex-by-age interactions in volume (six regions) and cortical thickness (seven regions) across the entire cortex.

DISCUSSION: We demonstrate that males have more widespread cortical atrophy at younger ages, but differences tend to disappear with increasing age, with males and females converging around the age of 75.

Funding information: National Institutes of Health, Grant/Award Numbers: U01-NS100620, P50-AG016574, U01-AG006786, R37-AG011378, R01-AG041851, R01-AG040042, C06-RR018898, R01-NS080820; Foundation Dr Corinne Schuler; Mangurian Foundation for Lewy Body Research; Elsie and Marvin Dekelboun Family Foundation; Little Family Foundation; Robert H. and Clarice Smith and Abigail Van Buren Alzheimer's Disease Research Program; Western Norway Regional Health Authority; Swedish Foundation for Strategic Research; Swedish Research Council; Karolinska Institutet Travel grants; Center for Innovative Medicine; Swedish Brain Foundation (Hjärnfonden); Swedish Alzheimer's Foundation (Alzheimerfonden); ALF Medicine; Swedish Dementia Foundation (Demensförbundet); Foundation for Geriatric Diseases at Karolinska Institutet; Projet Hospitalier de Recherche Clinique (PHRC), Grant/Award Number: IDCRB 2012-A00992-41; Fondation Université de Strasbourg; National Institute for Health Research (NIHR); Ministry of Health of the Czech Republic, Grant/Award Number: NU20-04-00294; European Union - Next Generation EU, Grant/Award Number: LX22NPO5107 (MEYS); MEYS CR (LM2018129 Czech-Biolmaging); Spanish Ministry of Science; Innovation and Universities and co-financed by the European Social Fund, Grant/Award Number: PRE2018-086675; Charles University, Grant/Award Number: PRIMUS 22/MED/011; Western Norway Regional Health Authority by Postdoc, Grant/Award Number: 912152; Royal Society Wolfson Research Merit Award Holder; Strategic Research Program in Neuroscience at Karolinska Institutet (StratNeuro); Åke Wiberg Foundation, Hjärnfonden; Demensfonden; Birgitta och Sten Westerberg

This is an open access article under the terms of the [Creative Commons Attribution-NonCommercial](https://creativecommons.org/licenses/by-nc/4.0/) License, which permits use, distribution and reproduction in any medium, provided the original work is properly cited and is not used for commercial purposes.

© 2023 The Authors. *Alzheimer's & Dementia* published by Wiley Periodicals LLC on behalf of Alzheimer's Association.

KEYWORDS

atrophy, dementia with Lewy bodies, magnetic resonance imaging, sex differences

Highlights

- Male DLB patients had higher odds for frontal atrophy on radiological visual rating scales.
- Male DLB patients displayed a widespread pattern of cortical gray matter alterations on automated methods.
- Sex differences in gray matter measures in DLB tended to disappear with increasing age.

1 | BACKGROUND

Recently, the influence of sex and gender on neurodegenerative diseases, such as Alzheimer's disease (AD) and Parkinson's disease (PD), has been spotlighted.^{1,2} However, fewer studies have investigated sex differences in dementia with Lewy bodies (DLB), another common neurodegenerative disease.

DLB is a predominantly male disease, but the sex ratio varies across cohorts. For example, the female-to-male ratio ranges from 0.59:1 in the Swedish population to 0.81:1 and 0.88:1 in cohorts from the UK and China and 1.20:1 in the French population, with a more balanced ratio above the age of 75.³⁻⁶ Sex influences core DLB clinical features. While parkinsonism and rapid eye movement sleep behavior disorder (RBD) are more frequent in DLB males,^{7,8} visual hallucinations are more frequent in DLB females,^{9,10} with some contradictory reports.⁸

Neuropathologically, a recent study demonstrated that DLB males more frequently have "pure" Lewy body pathology.¹¹ Another report showed that DLB males tended to have Lewy body pathology confined to the brainstem and limbic system at an earlier age.¹² In contrast, DLB females tended to accumulate Lewy body pathology at older ages, with more pronounced spreading across neocortical areas, perhaps reflecting a more aggressive disease course.¹² This finding may partially explain the delay in meeting diagnostic criteria in DLB females.¹³ Furthermore, DLB females more often have co-pathologies such as AD and cerebrovascular disease (CVD) *post mortem*,¹¹ which has also been demonstrated in vivo with amyloid beta (A β) and tau cerebrospinal fluid (CSF) biomarkers.^{10,14} AD and CVD co-pathologies influence the clinical presentation of DLB by reducing the likelihood of core clinical features,¹⁵⁻¹⁷ particularly in older DLB males.¹⁸

Two recent neuroimaging studies revealed a lower dopaminergic activity in DLB females compared with DLB males and more cholinergic alterations in DLB males.^{19,20} The data on sex differences in magnetic resonance imaging (MRI) measures of neurodegeneration in DLB are limited to only two studies. A study from 2004 investigated sex differences in regional cortical gray matter (GM) volume in eight male and eight female DLB patients.²¹ DLB males had smaller GM volumes than DLB females in the right dorsal frontal and bilateral parietal cortices. In a recent multicenter study on 49 male and 37 female DLB patients

from the European DLB (E-DLB) consortium,²² we found that frontal atrophy assessed with visual ratings was associated with the male sex and older age in DLB.²³

MRI studies on DLB usually include relatively small cohorts, which makes it difficult to reach sufficient statistical power, especially for the female group, which often has smaller sample sizes. This likely explains the lack of MRI studies on sex differences in DLB. We overcame this limitation by assembling a large multicenter MRI cohort of 442 DLB patients, the largest cohort of this type in the field. Our main aim was to investigate sex differences in measures of neurodegeneration through two different methods: visual ratings of brain atrophy and automated methods for volumetric and cortical thickness measures. The reason for using two methods was to generate knowledge applicable to clinical settings (visual ratings from radiologists) and replicate and expand radiological findings using more sensitive automated techniques for regional brain atrophy, thereby generalizing findings across MRI techniques. We hypothesized that DLB males would have more frontoparietal atrophy than DLB females.^{21,23} Further, we anticipated that DLB females would have more GM atrophy in the medial temporal lobe since they more frequently have AD co-pathology than DLB males.^{11,14} We also investigated the interaction between sex and age with MRI measures, since our previous study reported on the combined effect of sex and age on frontal lobe atrophy in DLB.²³ We hypothesized that DLB patients would show a sex-by-age interaction in frontal regions. Elucidating sex differences and sex-by-age interactions will be relevant to reveal their contribution to DLB clinical heterogeneity, particularly when interpreting MRI in clinical practice.

2 | METHODS**2.1 | Participants**

This study includes patients from multiple centers from the E-DLB consortium (<https://www.e-dlb.com/>) and the Mayo Clinic in the United States.²⁴ To address our study aim, we divided the cohort into two partially independent samples. First, we assessed sex differences using visual rating scales on clinical T1-weighted MRI scans from 327 DLB

patients from 14 E-DLB centers (204 males and 123 females). Second, we assessed sex differences using research-oriented automated methods, volumetric and cortical thickness measures, on high-resolution 3D T1-weighted MRIs from 165 DLB patients (119 males and 46 females, 56 of them shared with the 327 sample) from three E-DLB centers ($n = 97$) and the Mayo Clinic cohort from Rochester, MN, USA ($n = 68$). See Supplementary Table 1 for more details about the cohorts. For the research-oriented automated methods, we also included a group of cognitively unimpaired (CU) participants matched in sex and age with the DLB patients (Supplementary Table 2).

DLB diagnosis was established following the 2005 international consensus criteria for probable DLB.²⁵ The presence of core clinical features was collected, including parkinsonism, visual hallucinations, cognitive fluctuations, and clinical history of probable RBD. Exclusion criteria were as follows: (i) presence of acute delirium, (ii) terminal illness, (iii) previous stroke, (iv) psychotic or bipolar disorder, (v) craniocerebral trauma, and (vi) recent diagnosis of significant systemic disease. Age and years of education were collected for statistical analysis, and the Mini-Mental State Examination (MMSE) was used as a measure of global cognitive performance.

AD co-pathology was assessed through positivity in $A\beta$ and tau biomarkers: E-DLB centers used CSF $A\beta$ 1-42 and phosphorylated tau biomarkers, while the Mayo Clinic used positron emission tomography (PET) Pittsburgh compound B (PiB) and Flortaucipir (18F-AV-1451). CSF and PET biomarkers were combined as done previously,¹⁴ and biomarker levels were classified as normal or abnormal based on center-specific established cutoffs, as explained in prior publications.^{14,24} Moreover, the apolipoprotein E (APOE) $\epsilon 4$ genotype was recorded and carriership was considered as one or more copies of the allele.

For white matter hyperintensity (WMH) burden as a common biomarker of cerebrovascular disease, we used both the Fazekas scale²⁶ and a semi-automated method for WMH volume estimation, which is fully described elsewhere.^{16,27}

The ethics committee of each center approved the data collection. All patients or appropriate surrogates gave written informed consent to their participation in the study.

2.2 | MRI acquisition

The MRI scans were acquired using 1.5 and 3 T scanners, including a high-resolution 3D T1-weighted magnetization prepared rapid gradient echo (MPRAGE) sequence and a fluid-attenuated inversion recovery (FLAIR) sequence, as described in more detail in previous publications.^{16,28}

2.3 | MRI visual assessment and automated preprocessing

MRI scans of the clinical cohort were rated centrally at Karolinska Institutet by a single experienced neuroradiologist, who had previ-

RESEARCH IN CONTEXT

- 1. Systematic review:** We searched PubMed and reviewed articles investigating sex differences in neurodegeneration in dementia with Lewy bodies (DLB) using structural magnetic resonance imaging (MRI) and other imaging methods, published up to March 1, 2023. We found only one previous MRI study on sex differences in gray matter atrophy using a single-center cohort.
- 2. Interpretation:** In our two large multicentric cohorts of patients with dementia with Lewy bodies, we found a higher likelihood of frontal atrophy in male patients using visual ratings and a more widespread pattern of gray matter alterations when using automated estimations. However, sex-by-age interaction analyses revealed that sex differences in DLB seem to disappear with increasing age.
- 3. Future directions:** Sex-dependent brain atrophy trajectories in DLB may be a key to future precision medicine approaches.

ously demonstrated excellent intra-rater and inter-rater reliability.²⁹ Ratings were performed fully blinded to sex, demographic, and clinical information within a period of 6 weeks. Lobar atrophy was assessed with three visual rating scales based on T1-weighted images.³⁰ Frontal lobe atrophy was assessed with the global cortical atrophy-frontal subscale (GCA-F),³¹ medial temporal lobe atrophy with the medial temporal atrophy (MTA) scale,³² and posterior cortex atrophy with the posterior atrophy (PA) scale.³³ We classified the visual ratings into normal/abnormal using established cutoffs based on normative data from 345 healthy individuals, as explained elsewhere.³⁰ In the case of the MTA scale, both age-adjusted and unadjusted scores were used, depending on the statistical analysis as explained below. Since age corrections for GCA-F and PA do not improve their diagnostic performance, unadjusted scores were used.³⁰ Procedures and methods are described in detail in previous publications.^{26,30}

Regarding the research-oriented method for automated estimation of regional volume and cortical thickness, preprocessing was performed centrally at the Mayo Clinic, as detailed previously.³⁴ Briefly, the unified segmentation algorithm in SPM12 (Wellcome Centre for Human Neuroimaging, London, UK) was used for volume estimation with the Mayo Clinic Adult Lifespan Template (MCALT, <https://www.nitrc.org/projects/mcalt/>) tissue priors and settings.³⁵ Regions of interest (ROIs) were propagated using Advanced Normalization Tools (ANTs).³⁶ Altogether, 82 cortical, 12 subcortical, and two brainstem ROIs were estimated (see ROIs in Supplementary Table 3). Next, the ANTs DiReCT parameters were used for the cortical thickness estimation of the cortical ROIs from the tissue probabilities.³⁷ Moreover, the estimated total intracranial volume was calculated from the tissue probabilities.

2.4 | Statistical analyses

All the analyses were performed using R version 4.1.0 (The R Foundation for Statistical Computing).

Differences in demographic and clinical variables and biomarkers were assessed by *t* test for continuous variables, Mann–Whitney U test for ordinal variables, and Pearson's chi-squared test or Fisher's exact test for categorical variables.

Regarding the clinical cohort, visual rating scales were analyzed using two types of binary logistic regression models for dichotomized variables as the outcome (0, normal visual rating score; 1, abnormal visual rating score). The first model tested for the effect of sex while controlling for the age effect, and the second model tested for the interaction between sex and age. For the MTA scale, age-adjusted scores were used to test for the effect of sex, and the unadjusted scores were used to test for the interaction between sex and age.

Regarding the research-oriented automated method, two series of analyses were performed separately on volume and cortical thickness estimations after controlling for the effect of confounding variables. Confounding variables were controlled for as follows. For analyses on the effect of sex, for each ROI we obtained residuals from a multiple linear regression model with age and center as predictors (Model 1), separately for volume and cortical thickness as the outcome measures. Note that modeling the effect of center also corrected for the effect of field strength (3 T vs 1.5 T). For analyses investigating the interaction between sex and age, the residuals were obtained from a model with center as the only predictor (Model 2), separately for volume and cortical thickness as the outcome measures. Estimated total intracranial volume was included as an additional predictor in Models 1 and 2 when volume was the outcome measure (but not when cortical thickness was the outcome measure). Supplementary Models 1 and 2, including MMSE as an extra predictor, were fitted for sensitivity analyses. Once confounding variables were controlled for by obtaining residuals as explained above, we conducted the main analyses consisting of a first series of one-way ANOVA models with sex as the independent variable and volume or cortical thickness measures as dependent variables, with Cohen's *d* for effect sizes, followed by a second series of multiple linear regression models with sex, age, and the interaction between sex and age as independent variables and volume or cortical thickness measures as dependent variables. For ROI analyses on volume and cortical thickness, we report uncorrected *p* values followed by false discovery rate (FDR)-adjusted *p* values within the type of measure (volume or cortical thickness) and model (one-way ANOVA or multiple linear regression) to account for multiple testing.³⁸

Additionally, we followed the main analyses with three additional one-way ANOVAs to test whether our sex findings were independent of AD co-pathology, *APOE* ϵ 4 genotype, and WMH burden as a common biomarker of cerebrovascular disease. These analyses were limited to the ROIs showing significant sex differences in the main analyses. For WMH burden and *APOE* ϵ 4 genotype, we compared DLB males and DLB females on new residuals calculated using WMH burden or *APOE* ϵ 4 genotype (separately) as extra predictors for Model 1 explained earlier. This approach was not feasible for AD co-pathology due to the

limited group size of females with a positive AD biomarker. Hence, we replicated the main one-way ANOVA in the subsample of DLB patients with AD biomarkers available ($n = 122$), and then we further replicated the analyses for the significant findings in the subsample of male and female DLB patients with a negative AD biomarker ($n = 109$). For these last one-way ANOVAs, we used the residuals from Model 1 explained earlier.

We next investigated whether the findings from the models explained above were DLB-specific or merely reflected sex differences captured in a group of CU participants. To do that, we replicated all the analyses from the research-oriented cohort showing statistically significant sex differences or sex-by-age interactions using an external sex- and age-matched sample of CU participants, across the same regional MRI data as for the DLB patients.

Finally, we investigated whether the ROIs that yielded statistically significant results between the sex comparisons and sex-by-age interaction analyses described earlier were associated with clinical measures, using Pearson and point biserial correlations. For clinical measures, we initially considered the MMSE score as a continuous variable (Pearson correlation) and the four core clinical features as dichotomous variables (point biserial correlations). For ROI measures, we used residuals from Model 1.

The significance level was set at $p \leq .05$ in all statistical models.

3 | RESULTS

3.1 | Sociodemographic and clinical characteristics

Table 1 shows that there were no statistically significant differences between probable DLB males and females in most of the demographic and clinical variables. Nonetheless, in the clinical cohort, DLB females were older than DLB males. In the research-oriented cohort, DLB males had a lower MMSE score than DLB females, and DLB males had a higher frequency of parkinsonism than DLB females. There were also statistically significant differences in the estimated total intracranial volume, with DLB females showing a smaller intracranial volume, as expected. Therefore, further volumetric analyses were controlled for the estimated total intracranial volume, as explained in the Methods section.

3.2 | Visual rating scales of lobar atrophy (clinical cohort)

We found a significant sex effect on frontal atrophy: based on normative data from healthy individuals, the odds of an abnormal score in GCA-F were statistically significantly higher for DLB males (40% had an abnormal GCA-F score) compared to DLB females (28% had an abnormal GCA-F score, p value = .004) (Table 2). Specifically, the odds that a male DLB patient would have an abnormal score in GCA-F was two times higher than for a female DLB patient (95% CI [1.28, 3.57]). For the MTA (36% abnormal in males, 41% in females) and PA (63%

TABLE 1 Demographic and clinical characteristics of probable DLB males and females.

	Clinical cohort (N = 327)				Research-oriented cohort (N = 165)			
	Males	Females	n, M/F	t stat/ χ^2 (P)	Males	Females	n, M/F	t stat/ χ^2 (P)
Age, mean (SD)	72.07 (8.21)	74.81 (8.13)	204/123	2.940 (0.004)	68.73 (8.40)	70.02 (9.03)	119/46	0.867 (0.387)
Years of education, mean (SD, range)	10.91 (4.00, 2 to 22)	10.04 (3.75, 3 to 18)	170/102	1.771 (0.078)	13.71 (4.63, 5 to 22)	13.41 (3.20, 6 to 22)	119/46	0.446 (0.656)
Disease duration (years), mean (SD)	3.23 (2.01)	3.26 (2.58)	90/27	0.070 (0.944)	5.83 (4.63)	5.02 (3.20)	97/26	0.839 (0.403)
MMSE, mean (SD)	22.58 (3.93)	21.90 (4.33)	201/121	1.451 (0.148)	22.33 (5.47)	24.44 (4.18)	119/45	2.350 (0.020)
Visual hallucinations (presence)	55.2%	64.4%	174/101	2.221 (0.136)	53.4%	58.7%	116/46	0.366 (0.545)
Cognitive fluctuations (presence)	82.7%	87.5%	110/80	0.816 (0.366)	83.9%	82.2%	112/45	0.068 (0.795)
Parkinsonism (presence)	75.3%	80.7%	166/88	0.945 (0.331)	90.6%	78.3%	117/46	4.478 (0.034)
Probable RBD (presence)	78%	50.0%	41/14	0.085 (0.052)	80.2%	71.8%	111/39	1.183 (0.277)
Fazekas scale, n 0/1/2/3	10/70/30/35	7/38/28/20	145/93	6530.0 (0.662)	4/25/10/5	1/6/4/1	44/12	249.5 (0.748)
WMH volume (cm ³), mean (SD)	N/A				16.01 (13.65)	16.39 (12.26)	119/46	0.166 (0.868)
TIV (mm ³), mean (SD)	N/A				1632.00 (134.99)	1441.99 (117.27)	119/46	8.397 (<0.001)
AD co-pathology (presence)	14.0%	15.4%	43/13	1.000 (0.603)	10.6%	10.8%	85/37	1.000 (0.598)
APOE ϵ 4 carriers (presence)	67.5%	46.2%	40/13	0.200 (0.147)	45.2%	38.6%	115/44	0.561 (0.454)

Note: Statistically significant differences are shown in bold ($P \leq 0.05$).

Abbreviations: AD, Alzheimer's disease; APOE, apolipoprotein E; F, female; M, male; MMSE, Mini-Mental State Examination; N/A, not applicable; RBD, rapid eye movement sleep behavior disorder; TIV, total intracranial volume; WMH, white matter hyperintensities.

TABLE 2 Logistic regression models of visual rating scales.

						Abnormal score, n (%)	
Model 1: Sex effects	Effect	OR	SE	95% CI	P	Males	Females
GCA-F	Sex	2.121	0.260	[1.284, 3.566]	0.004	81 (39.71%)	34 (27.64%)
MTA	Sex	0.804	0.234	[0.508, 1.273]	0.350	74 (36.27%)	51 (41.46%)
PA	Sex	1.459	0.237	[0.917, 2.325]	0.111	128 (62.75%)	68 (55.28%)
Model 2: Sex-by-age interaction						Age of abnormal score, mean (SD)	
	Effect	OR	SE	95% CI	P	Males	Females
GCA-F	Sex \times age	1.018	0.034	[0.951, 1.087]	0.590	74.68 (6.66)	77.06 (7.05)
MTA	Sex \times age	1.028	0.036	[0.956, 1.103]	0.451	73.43 (6.20)	77.11 (6.72)
PA	Sex \times age	0.977	0.029	[0.922, 1.034]	0.417	72.45 (8.48)	75.93 (8.24)

Note: Model 1 is a binary logistic regression model with visual rating scale scores as the dependent variable (normal vs abnormal) and both sex (variable of interest) and age (control variable) as the independent variables. For the MTA scale, the model included age-adjusted score as the dependent variable (normal vs abnormal) and sex (variable of interest). Model 2 is a binary logistic regression model with visual rating scale scores as the dependent variable (normal vs abnormal) and the interaction between sex and age (variable of interest), together with sex and age as the independent variables. For visual rating scales, values "0" and "1" correspond to "normal" and "abnormal" scores according to established cutoffs. For sex, values "0" and "1" correspond to male and female sex, respectively. Statistically significant effects are shown in bold ($P \leq 0.05$).

Abbreviations: GCA-F, global cortical atrophy-frontal subscale; MTA, medial temporal atrophy scale; PA, posterior atrophy scale.

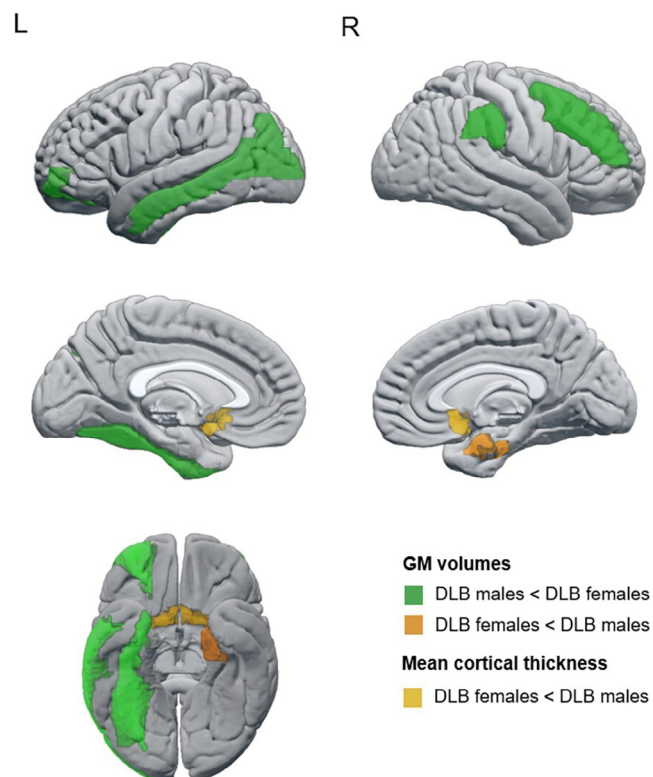


FIGURE 1 Regions showing statistically significant sex differences in automated estimations of regional atrophy in probable DLB. Regions colored in green showed a smaller GM volume in DLB males than in DLB females; regions colored in orange showed smaller/thinner estimations in DLB females than DLB males, the darker one for GM volumes and the lighter for mean cortical thickness. DLB, dementia with Lewy bodies; GM, gray matter; L, left; R, right.

abnormal in males, 55% in females), there were no statistically significant sex differences. We found no significant interaction between sex and age in any of the three scales (Table 2).

3.3 | Automated estimations of regional atrophy (research-oriented cohort)

We found statistically significant smaller GM volumes in DLB males than in DLB females in the orbital part of the middle frontal cortex, as well as in the middle frontal, fusiform, middle occipital, middle temporal, and supramarginal cortices (Figure 1, $p \leq 0.05$ in all measures; Supplementary Table 4). In contrast, DLB females had a smaller GM volume than DLB males in the right entorhinal cortex, as well as thinner olfactory cortices (Figure 1, $p \leq 0.05$; Supplementary Table 3).

We found statistically significant sex-by-age interactions in GM volume in the anterior cingulum, middle frontal, fusiform, supramarginal, and superior temporal cortices (Figure 2A; $p \leq 0.05$; Table 3). There were also statistically significant sex-by-age interactions in cortical thickness in the angular, insular, superior occipital, and superior parietal cortices as well as in the precuneus (Figure 2A; $p \leq 0.05$; Table 3). All these interactions showed that DLB males had significantly smaller GM volumes or thinner cortex than DLB females at younger

ages, but sex differences were no longer significant at older ages (Figure 2B).

The sensitivity analyses with MMSE score as an extra predictor showed that male DLB patients had smaller left middle occipital and right supramarginal volumes than female DLB patients ($p \leq 0.05$). Further, female DLB patients had smaller right entorhinal cortex volume and thinner olfactory cortices than male DLB patients ($p \leq 0.05$). All sex-by-age interactions remained significant after controlling for MMSE ($p \leq 0.05$).

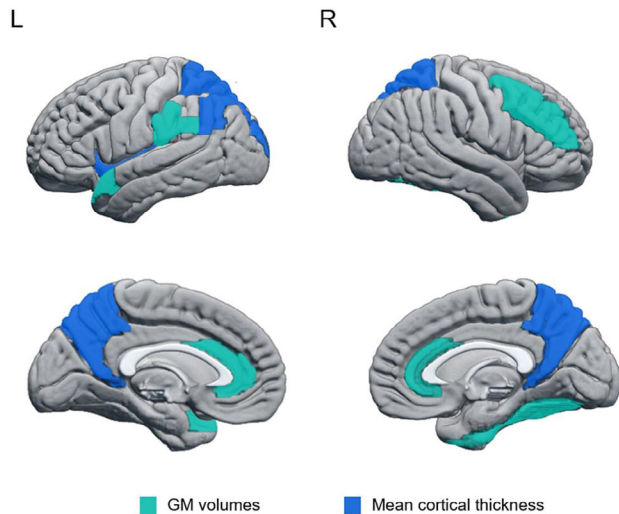
Concerning the follow-up models accounting for AD co-pathology, APOE ϵ 4 genotype, and WMH burden, all the models for sex differences remained statistically significant except for the right middle frontal cortex when accounting for APOE ϵ 4 genotype and the left fusiform cortex when accounting for WMH burden. The subanalysis for AD status reduced the sample from 165 to 122 participants due to missing data on biomarkers of AD. Hence, we first had to replicate our main analyses in the reduced cohort. These new analyses showed sex differences in four out of the nine ROIs with statistically significant sex differences in the 165 cohort, including volume of left middle temporal, right supramarginal, and right entorhinal cortices, as well as the thickness of the left olfactory cortex ($P \leq 0.05$). Starting the subanalyses from those four ROIs, when we restricted the sample to male and female DLB patients with negative AD status ($n = 109$), the sex differences remained statistically significant for the four ROIs ($p \leq 0.05$).

All significant ROIs reported in this section for sex differences and sex-by-age interactions were analyzed in the CU group to clarify whether the findings were DLB-specific or merely reflected sex differences captured in the normal population. We found that CU females had a smaller GM volume than CU males only in the right entorhinal cortex (DLB males, mean = -0.083 , SD = 0.270 ; DLB females, mean = 0.031 , SD = 0.262 ; $F = 6.112$; p value = 0.014). Otherwise, all findings reported above failed to be replicated in the CU group, suggesting that our findings are DLB-specific.

3.4 | Correlations between regional atrophy and clinical measures

To ensure a proper fitting of the models, we excluded clinical measures that had less than 12 cases per sex group. Because of the high frequency of parkinsonism, cognitive fluctuations, and probable DLB in our research-oriented cohort, we did not have enough variability to model these variables, and our correlation analyses were thus limited to the MMSE and visual hallucinations. The results showed different correlations in male and female DLB patients. In male DLB patients, we observed that a smaller volume in the left middle temporal gyrus, left anterior cingulum, and right fusiform gyrus, as well as thinner bilateral olfactory cortices, significantly correlated with lower MMSE scores ($P \leq 0.05$, Supplementary Table 5). Further, a smaller volume in the orbital part of the left middle frontal gyrus and a thinner left olfactory cortex significantly correlated with the presence of visual hallucinations ($p \leq 0.05$, Supplementary Table 5). In contrast, we found no statistically significant correlations between regional atrophy and clinical measures in female DLB patients.

Panel (A)



Panel (B)

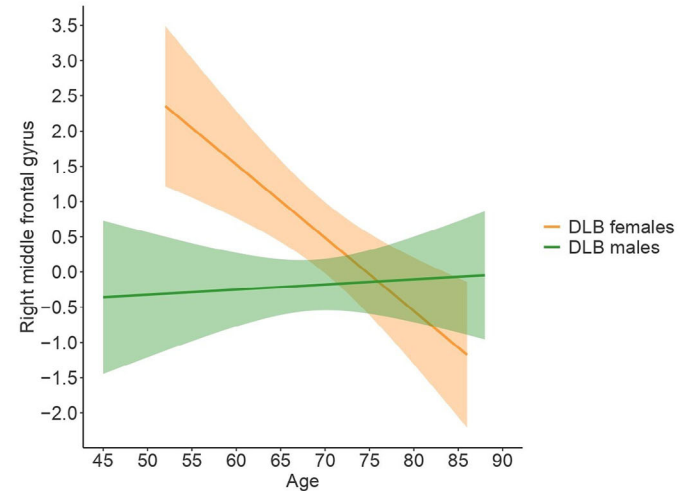


FIGURE 2 (A) Regions showing statistically significant sex-by-age interactions in automated estimations of regional atrophy in probable DLB. Regions colored in lighter blue correspond to GM volume estimations, and regions colored in darker blue correspond to mean cortical thickness estimations. (B) Significant sex-by-age interaction in right middle frontal cortex (region with highest effect size; Table 3). For all regions showing significant sex-by-age interaction, sex differences were statistically significant at younger ages and tended to be non-significant at older ages. GM, gray matter; L, left; R, right.

TABLE 3 Significant sex and age interactions in automated estimations of regional atrophy in probable DLB.

	B	SE	95% CI	P
Volumes				
Left anterior cingulum	0.023	0.011	[0.001, 0.046]	0.035
Right anterior cingulum	0.032	0.015	[0.002, 0.062]	0.037
Right middle frontal gyrus	0.111	0.038	[0.036, 0.186]	0.004
Right fusiform gyrus	0.046	0.019	[0.007, 0.084]	0.020
Left supramarginal gyrus	0.033	0.016	[0.002, 0.064]	0.039
Left superior temporal pole	0.017	0.009	[0.001, 0.035]	0.046
Mean cortical thickness				
Left angular gyrus	0.016	0.006	[0.004, 0.028]	0.008
Left insular cortex	0.012	0.006	[0.001, 0.024]	0.040
Left superior occipital gyrus	0.015	0.005	[0.005, 0.025]	0.004
Left superior parietal lobule	0.014	0.006	[0.003, 0.026]	0.015
Right superior parietal lobule	0.012	0.006	[0.001, 0.024]	0.042
Left precuneus	0.016	0.007	[0.003, 0.029]	0.017
Right precuneus	0.014	0.006	[0.001, 0.028]	0.036

Note: Multiple linear regression analysis was used with each region of interest (ROI) as the dependent variable and sex, age, and the sex-by-age interaction as independent variables.

Abbreviation: CI, confidence interval.

4 | DISCUSSION

We investigated sex differences in brain atrophy in DLB. Using visual ratings we demonstrated frontal atrophy in 40% of male and 28% of female DLB patients, medial temporal atrophy in 36% of males and 41% of females, and posterior atrophy in 63% of males and 55% of

females. These sex differences were significant for frontal atrophy. We replicated this finding in a largely independent cohort using a research-oriented method for regional atrophy, demonstrating that sex differences in DLB tend to disappear with increasing age, with atrophy levels converging in DLB males and females after the age of 75. Overall, our findings suggest more severe neurodegeneration in young DLB

males, with no significant sex differences at older ages. This regional atrophy correlated with cognitive impairment and visual hallucinations only in DLB males.

The greater frontal atrophy in DLB males replicates the finding from our previous study using visual ratings on a smaller sample.²³ When explicitly testing for sex differences in our current study, DLB males showed greater frontal atrophy than DLB females. Based on our findings, the clinician could expect that almost 40% of DLB males would display frontal atrophy, while DLB females would rarely show any frontal atrophy below the age of 75. This suggests that current cutoffs for frontal atrophy may need to be revisited for DLB by adjusting for sex and age, as was previously done for AD.³⁰ Furthermore, sex may interact with other factors, such as education and disease duration, in driving frontal atrophy.²³ These data encourage following up on sex differences in ratings of frontal atrophy. Advancing our current understanding of sex differences could optimize interpretations in clinical workups and enhance the role of structural MRI in DLB diagnostic criteria.³⁹

We replicated these clinical results in a largely independent cohort using automated estimations of volume and cortical thickness. We found a smaller GM volume in DLB males compared to DLB females in frontal, temporal, parietal, and occipital regions. In contrast, DLB females showed a smaller volume than DLB males in the right entorhinal cortex and thinner olfactory cortices. None of these differences were significant in the CU group, except for the right entorhinal cortex, indicating that our findings likely reflect disease-related sex differences. Only one previous publication explored sex differences in atrophy in DLB.²¹ The authors found a smaller GM volume in DLB males compared with DLB females in frontal and parietal regions. When we increased the sample size to 165 DLB patients, our study showed smaller GM volumes in DLB males compared to DLB females not only in frontal and parietal regions but also in temporal and occipital cortices. These findings support a cortical vulnerability in DLB males extending beyond anterior regions. While effect sizes were comparable across regions, visual ratings only captured differences in frontal lobes, while automated methods may be more sensitive to detect differences across the cortical mantle. Nonetheless, frontal regions were more represented in the findings from the automated method, which may explain the sensitivity of the GCA-F scale.

DLB females had a thinner olfactory cortex than males. Olfactory alterations can discriminate DLB from AD.⁴⁰⁻⁴² Nonetheless, previous studies reported no sex differences in odor identification in DLB.^{40,42} Investigating sex differences in olfactory identification and their brain correlates could help characterize the less investigated "olfactory bulb only" subtype of DLB.⁴³ We recently showed that the olfactory cortex is one of the regions that discriminates two DLB subtypes with widespread predominant cortical atrophy and predominant fronto-occipital atrophy.⁴⁴

We also found that DLB females had a smaller volume in the right entorhinal cortex than DLB males. Atrophy in medial temporal regions in DLB females could be explained by their higher frequency of AD co-pathology.¹¹ However, this explanation is unlikely in our cohort since we found no sex differences in AD biomarkers. Instead, our repli-

cation analyses in CU participants revealed a smaller entorhinal cortex volume in females compared with males. Previous studies reported the same result in CU participants.^{45,46} Hence, one could posit that sex differences in the entorhinal cortex in our cohort were likely not DLB-specific but rather reflected a common finding in the normal population.

We next replicated our findings restricting the sample to patients with negative AD biomarkers. We also adjusted our statistical analyses for the APOE ϵ 4 genotype due to its association with AD pathology and medial temporal atrophy. Since WMH burden correlates with GM neurodegeneration in DLB,^{16,17} we also adjusted our models for WMH. Many of the brain regions with significant sex differences survived these sensitivity analyses, suggesting that the reported sex differences were independent of these co-pathologies and APOE genotype.

An important contribution of this study is the sex-by-age interaction, particularly in the right middle frontal gyrus. We found that DLB males had similar GM volumes in the right middle frontal gyrus across ages, while DLB females showed a steeper slope with a smaller GM volume at older ages, converging with males around the age of 75. This finding expands our previous report, which showed the combined contribution of male sex and older age toward frontal atrophy.²³ In the current study, we circumscribed the influence of sex and age on a specific frontal region using a more sensitive method in a largely independent cohort. This finding reinforced the male sex contribution to frontal atrophy in DLB and included the consideration of sex differences minimizing at older ages. The observed interactions could reflect a plateau level of high atrophy in DLB males across all sampled ages since around 40% of DLB males demonstrated frontal atrophy.

We found sex-by-age interactions in the volume of other regions located in frontal, temporal, and parietal areas. In addition, the cortical thickness analyses showed significant interactions in occipital, left insular, and parietal areas. These interactions may reflect cortical atrophy beyond frontal areas initiating at early stages in DLB males. Several studies on individuals with isolated RBD, a prodromal phase of alpha-synucleinopathy, showed cortical GM loss at that early phase.⁴⁷ This finding suggests an earlier onset and flatter disease course in DLB males, as opposed to a more aggressive course upon dementia diagnosis in DLB females.¹⁰ Future longitudinal studies should confirm this hypothesis.

One might speculate that neuroprotective factors could be a reason for the steeper slope of brain atrophy in DLB females. Perhaps hormonal levels delay atrophy in females.⁴⁸ The reduction in estrogen levels after menopause and with aging may increase the vulnerability to pathology and neurodegeneration in females. In a previous study, we found superior and middle frontal gyrus preservation in females receiving menopausal hormone therapy over 7 years.⁴⁹ The maintenance of the dorsolateral prefrontal cortex correlated significantly with lower A β deposition.⁴⁹ That finding highlighted the sensitivity of frontal areas to estradiol neuroprotection. However, the exact biological mechanisms underlying sex differences in DLB are largely unknown. Our interpretation of neuroprotective factors thus remains speculative, and we encourage future studies on hormones and neurodegeneration in DLB.

We also performed sensitivity analyses adjusting for MMSE. Several sex differences remained significant, except mainly for frontal regions, which may suggest that the greatest cognitive impairment in DLB males could partly be associated with frontal atrophy. In contrast, all sex-by-age interactions remained significant.

Finally, our correlation analyses showed that, in DLB males, greater atrophy in middle temporal, olfactory, anterior cingulum, and fusiform cortices was associated with lower MMSE scores, while atrophy in middle frontal and olfactory cortices was associated with visual hallucinations. A previous study demonstrated an association between atrophy in the middle frontal cortex and visual hallucinations in DLB.⁵⁰ Our study expands that previous finding by showing that such an association is more prominent in DLB males.

A strength of this study is the validation of sex differences in clinical and research-oriented brain atrophy measures in two largely independent multicenter DLB cohorts. In addition, this is the first report on sex-by-age interactions in brain atrophy, providing findings that may have implications for clinical workup and treatment monitoring in DLB. Our automated analyses replicated the findings from visual ratings, which were assessed against normative data from 345 healthy individuals.³⁰ Our findings do not seem to reflect the sex differences reported in normal aging^{51,52} and were not replicated in a group of CU participants except for the right entorhinal cortex, which indicates that our findings are likely disease-specific. Future studies should investigate sex differences in regional atrophy using longitudinal designs. For instance, previous studies showed variation in sex differences throughout the disease course in PD.⁵³⁻⁵⁷ Another limitation of this study is that we estimated cognitive impairment with the MMSE, which is a rough measure of global cognition. Data on ethnicity and race were missing in our cohort, although we acknowledge that racial-ethnic diversity should be considered in future research on sex differences in DLB.⁵⁸

In conclusion, male DLB patients have a more widespread cortical atrophy than female DLB patients, mainly in frontal regions, which correlates with global cognitive impairment and visual hallucinations. However, these sex differences are minimized with increasing age, especially after the age of 75. These findings may have implications for the interpretation of MRI markers in clinical workup and as an endpoint in clinical trials.

AFFILIATIONS

¹Medical Psychology Unit, Department of Medicine, Institute of Neuroscience, University of Barcelona, Barcelona, Catalonia, Spain

²Institute of Biomedical Research August Pi i Sunyer (IDIBAPS), Barcelona, Catalonia, Spain

³Division of Clinical Geriatrics, Center for Alzheimer Research, Department of Neurobiology, Care Sciences and Society, Karolinska Institutet, Stockholm, Sweden

⁴University Hospital of Psychiatry and Psychotherapy Bern, University of Bern, Bern, Switzerland

⁵Department of Radiology, Mayo Clinic, Rochester, Minnesota, USA

⁶Memory Clinic, Department of Neurology, Charles University, 2nd Faculty of Medicine and Motol University Hospital, Prague, Czech Republic

⁷Department of Quantitative Health Sciences, Mayo Clinic, Rochester, Minnesota, USA

⁸Center for Age-Related Medicine, Stavanger University Hospital, Stavanger, Norway

⁹Stavanger Medical Imaging Laboratory (SMIL), Department of Radiology, Stavanger University Hospital, Stavanger, Norway

¹⁰The Norwegian Centre for Movement Disorders, Stavanger University Hospital, Stavanger, Norway

¹¹Department of Quality and Health Technology, Faculty of Health Sciences, University of Stavanger, Stavanger, Norway

¹²Geriatrics and Neurology Units, Research and Resources Memory Center (CM2R), Hôpitaux Universitaires de Strasbourg, Strasbourg, France

¹³ICube Laboratory (CNRS, UMR 7357), Strasbourg, France

¹⁴Department of Radiology & Nuclear Medicine (AMC), Amsterdam UMC, Vrije Universiteit, Amsterdam, the Netherlands

¹⁵Queen Square Institute of Neurology and Centre for Medical Image Computing (CMIC), University College London, London, UK

¹⁶Alzheimer Center Amsterdam, Neurology, Vrije Universiteit Amsterdam, Amsterdam UMC location Vumc, Amsterdam, The Netherlands

¹⁷Amsterdam Neuroscience, Neurodegeneration, Vrije Universiteit Amsterdam, Amsterdam UMC location Vumc, Amsterdam, The Netherlands

¹⁸Neurology Unit, Department of Clinical and Experimental Sciences (DSCS), University of Brescia, Brescia, Italy

¹⁹Brain and Mind Research, Central European Institute of Technology (CEITET), Masaryk University, Brno, Czech Republic

²⁰Department of Medicine and Aging Sciences University G. d'Annunzio of Chieti-Pescara Chieti, Chieti, Italy

²¹Department of Neuroscience, Rehabilitation, Ophthalmology, Genetics, Maternal and Child Health, University of Genova, Genova, Italy

²²Department of Neurology, University Medical Center, Ljubljana, Slovenia

²³Translational and Clinical Research Institute, Faculty of Medical Sciences, Newcastle University, Newcastle upon Tyne, UK

²⁴Memory Clinic, Landspítali, Reykjavik, Iceland

²⁵Division of Psychiatry, University College London, London, UK

²⁶St Margaret's Hospital, Essex Partnership University NHS Foundation Trust, Essex, UK

²⁷Parkinson and Movement Disorders Unit, Study Center on Neurodegeneration (CESNE), Padova, Italy

²⁸Network Center for Biomedical Research in Neurodegenerative Diseases (CIBERNED: CB06/05/0018-ISCI), Barcelona, Catalonia, Spain

²⁹Department of Neurology, Mayo Clinic, Rochester, USA

³⁰Department of Old Age Psychiatry, Institute of Psychiatry, Psychology & Neuroscience (IoPPN), King's College London, London, UK

³¹Facultad de Ciencias de la Salud, Universidad Fernando Pessoa Canarias, Las Palmas, España

ACKNOWLEDGMENTS

This work was supported by the National Institutes of Health (NHS) (U01-NS100620, P50-AG016574, U01-AG006786, R37-AG011378, R01-AG041851, R01-AG040042, C06-RR018898, and R01-NS080820), Foundation Dr Corinne Schuler, the Mangurian Foundation for Lewy Body Research, the Elsie and Marvin Dekelboum Family Foundation, the Little Family Foundation, the Robert H. and Clarice Smith and Abigail Van Buren Alzheimer's Disease Research Program, the Western Norway Regional Health Authority, the Swedish Foundation for Strategic Research (SSF), the Swedish Research Council (VR), Karolinska Institutet travel grants, Center for Innovative

Medicine (CIMED), the Swedish Brain Foundation (Hjärnfonden), the Swedish Alzheimer's Foundation (Alzheimerfonden), ALF Medicine, the Swedish Dementia Foundation (Demensförbundet), the Foundation for Geriatric Diseases at Karolinska Institutet, and the Projet Hospitalier de Recherche Clinique (PHRC, IDCRB 2012-A00992-41) and Fondation Université de Strasbourg. This paper represents independent research [part] funded by the National Institute for Health Research (NIHR) Biomedical Research Center at South London and Maudsley NHS Foundation Trust and King's College London to D.A. The views expressed are those of the author(s) and not necessarily those of the NHS, the NIHR, or the Department of Health and Social Care. The work was also supported by the Ministry of Health of the Czech Republic (Grant NU20-04-00294) and LX22NPO5107 (MEYS): Funded by European Union – Next Generation EU. We acknowledge the contribution of the core facility MAFIL of CEITEC supported by the MEYS CR (LM2018129 Czech-Biolmaging). J.O. was supported by a 2018 fellowship from the Spanish Ministry of Science, Innovation and Universities and co-financed by the European Social Fund (PRE2018-086675). Z.N. is supported by The Grant Agency of Charles University (Grant PRIMUS 22/MED/011). The sponsors played no role in the study design, in the collection, analysis, and interpretation of data, in the writing of the report, or in the decision to submit the article for publication. K.O. is funded by the Western Norway Regional Health Authority by Postdoc Grant 912152. D.A. is a Royal Society Wolfson Research Merit Award Holder and would like to thank the Wolfson Foundation and the Royal Society for their support. E.W. and D.F. are supported by the Swedish Foundation for Strategic Research (SSF), the Strategic Research Program in Neuroscience at Karolinska Institutet (StratNeuro), the Swedish Research Council (VR), the Åke Wiberg Foundation, Hjärnfonden, Alzheimerfonden, Demensfonden, and Birgitta och Sten Westerberg.

CONFLICT OF INTEREST STATEMENT

J.O., A.H., C.G.S., Z.N., A.I., P. D-G, S.A.P., K.O., M.C.G, N.P., F.B., A.W.L., J.H., A.P., I.R., F.M., L.B., F.M.; M.G.K., J-P T., J.S., Z.W., A.A., B.S., C.J., E.W., B.F.B., and D.F. report no disclosures relevant to the manuscript. V.J.L. consults for Bayer Schering Pharma, Piramal Life Sciences, Life Molecular Imaging, Eisai Inc., AVID Radiopharmaceuticals, and Merck Research and receives research support from GE Healthcare, Siemens Molecular Imaging, AVID Radiopharmaceuticals and the NIH (National Institute on Aging, National Cancer Institute). F.B. has served as national coordinator and principal investigator for clinical trials sponsored by Biogen, Roche, Axovant, and Eisai. B.F.B. has served as an investigator for clinical trials sponsored by Biogen and Alector. He receives royalties from the publication of a book entitled Behavioral Neurology of Dementia (Cambridge Medicine, 2017), serves on the Scientific Advisory Board of the Tau Consortium, and receives research support from NIH, the Mayo Clinic Dorothy and Harry T. Mangurian Jr. Lewy Body Dementia Program, the Little Family Foundation, and the Ted Turner and Family Foundation LBD Functional Genomics Program. D.A. has received research support and/or honoraria from AstraZeneca, H. Lundbeck, Novartis Pharmaceuticals, and GE Health and served as a paid consultant for H. Lundbeck, Eisai, and Evonik. K. K.

serves on the data safety monitoring board for Takeda Global Research and Development Center, Inc., receives research support from Avid Radiopharmaceuticals and Eli Lilly, and receives funding from NIH and Alzheimer's Drug Discovery Foundation. All authors declare no competing interests. Author disclosures are available in the [supporting information](#)

CONSENT STATEMENT

All patients or appropriate surrogates gave written informed consent to their participation in the study.

ORCID

Javier Oltra  <https://orcid.org/0000-0002-9268-4504>

REFERENCES

- Podcasy JL, Epperson CN. Considering sex and gender in Alzheimer disease and other dementias. *Dialogues Clin Neurosci*. 2016;18(4):437-446. doi:10.31887/DCNS.2016.18.4/cepperson
- Cerri S, Mus L, Blandini F. Parkinson's disease in women and men: what's the difference? *J Parkinsons Dis*. 2019;9(3):501-515. doi:10.3233/JPD-191683
- Fereshtehnejad SM, Religa D, Westman E, Aarsland D, Lökk J, Eriksdotter M. Demography, diagnostics, and medication in dementia with Lewy bodies and Parkinson's disease with dementia: data from the Swedish Dementia Quality Registry (SveDem). *Neuropsychiatr Dis Treat*. 2013;9:927-935. doi:10.2147/NDT.S45840
- Kane JPM, Surendranathan A, Bentley A, et al. Clinical prevalence of Lewy body dementia. *Alzheimer's Res Ther*. 2018;10:19. doi:10.1186/s13195-018-0350-6
- Gan J, Chen Z, Shi Z, et al. Sex differences in clinical cognitive impairment with Lewy bodies: a Chinese multicenter study. *Biol Sex Differ*. 2022;13(55). doi:10.1186/s13293-022-00464-w
- Mouton A, Blanc F, Gros A, et al. Sex ratio in dementia with Lewy bodies balanced between Alzheimer's disease and Parkinson's disease dementia: a cross-sectional study. *Alzheimer's Res Ther*. 2018;10:92. doi:10.1186/s13195-018-0417-4
- Utsumi K, Fukatsu R, Yamada R, Takamaru Y, Hara Y, Yasumura S. Characteristics of initial symptoms and symptoms at diagnosis in probable dementia with Lewy body disease: incidence of symptoms and gender differences. *Psychogeriatrics*. 2020;20(5):737-745. doi:10.1111/psyg.12586
- Bayram E, Coughlin DG, Banks SJ, Litvan I. Sex differences for phenotype in pathologically defined dementia with Lewy bodies. *J Neurol Neurosurg Psychiatry*. 2021;92(7):745-750. doi:10.1136/jnnp-2020-325668
- Chiu PY, Teng PR, Wei CY, Wang CW, Tsai CT. Gender difference in the association and presentation of visual hallucinations in dementia with Lewy bodies: a cross-sectional study. *Int J Geriatr Psychiatry*. 2018;33(1):193-199. doi:10.1002/gps.4706
- van de Beek M, Babapour Mofrad R, van Steenoven I, et al. Sex-specific associations with cerebrospinal fluid biomarkers in dementia with Lewy bodies. *Alzheimer's Res Ther*. 2020;12:44. doi:10.1186/s13195-020-00610-9
- Barnes LL, Lamar M, Schneider JA. Sex differences in mixed neuropathologies in community-dwelling older adults. *Brain Res*. 2019;1719:11-16. doi:10.1016/j.brainres.2019.05.028
- Fujimi K, Sasaki K, Noda K, et al. Clinicopathological outline of dementia with Lewy bodies applying the revised criteria: the Hisayama study. *Brain Pathol*. 2008;18(3):317-325. doi:10.1111/j.1750-3639.2008.00169.x
- Chiu SY, Wyman-Chick KA, Ferman TJ, et al. Sex differences in dementia with Lewy bodies: focused review of available evidence and future

- directions. *Parkinsonism Relat Disord.* 2023;107:105285. doi:10.1016/j.parkreldis.2023.105285
14. Ferreira D, Przybelski SA, Lesnick TG, et al. β -Amyloid and tau biomarkers and clinical phenotype in dementia with Lewy bodies. *Neurology.* 2020;95(24):e3257-e3268. doi:10.1212/WNL.00000000000010943
 15. Ghebremedhin E, Rosenberger A, Rüb U, et al. Inverse relationship between cerebrovascular lesions and severity of Lewy body pathology in patients with Lewy body diseases. *J Neuropathol Exp Neurol.* 2010;69(5):442-448. doi:10.1097/NEN.0b013e3181d88e63
 16. Ferreira D, Nedelska Z, Graff-Radford J, et al. Cerebrovascular disease, neurodegeneration, and clinical phenotype in dementia with Lewy bodies. *Neurobiol Aging.* 2021;105:252-261. doi:10.1016/j.neurobiolaging.2021.04.029
 17. Ferreira D, Przybelski SA, Lesnick TG, et al. Cross-sectional associations of β -Amyloid, tau, and cerebrovascular biomarkers with neurodegeneration in probable dementia with Lewy bodies. *Neurology.* 2023;100(8):e846-e859. doi:10.1212/WNL.0000000000201579. Published online 2022.
 18. Bayram E, Coughlin DG, Litvan I. Sex differences for clinical correlates of Alzheimer's pathology in people with Lewy body pathology. *Mov Disord.* 2022;37(7):1505-1515. doi:10.1002/mds.29044
 19. Boccalini C, Nicastro N, Peretti DE, Caminiti SP, Perani D, Garibotto V. Sex differences in dementia with Lewy bodies: an imaging study of neurotransmission pathways. *Eur J Nucl Med Mol Imaging.* 2023;50(7):2036-2046. doi:10.1007/s00259-023-06132-4
 20. Caminiti SP, Boccalini C, Nicastro N, Garibotto V, Perani D. Sex differences in brain metabolic connectivity architecture in probable dementia with Lewy bodies. *Neurobiol Aging.* 2023;126:14-24. doi:10.1016/j.neurobiolaging.2023.02.004
 21. Ballmaier M, O'Brien JT, Burton EJ, et al. Comparing gray matter loss profiles between dementia with Lewy bodies and Alzheimer's disease using cortical pattern matching: diagnosis and gender effects. *Neuroimage.* 2004;23(1):325-335. doi:10.1016/j.neuroimage.2004.04.026
 22. Oppedal K, Borda MG, Ferreira D, Westman E, Aarsland D. European DLB consortium: diagnostic and prognostic biomarkers in dementia with Lewy bodies, a multicenter international initiative. *Neurodegener Dis Manag.* 2019;9(5):247-250. doi:10.2217/nmt-2019-0016
 23. Abdelnour C, Ferreira D, Oppedal K, et al. The combined effect of amyloid- β and tau biomarkers on brain atrophy in dementia with Lewy bodies. *Neuroimage Clin.* 2020;27:102333. doi:10.1016/j.nicl.2020.102333
 24. Kantarci K, Lowe VJ, Boeve BF, et al. AV-1451 tau and β -amyloid positron emission tomography imaging in dementia with Lewy bodies. *Ann Neurol.* 2017;81(1):58-67. doi:10.1002/ana.24825
 25. McKeith IG, Dickson DW, Lowe J, et al. Diagnosis and management of dementia with Lewy bodies: third report of the DLB Consortium. *Neurology.* 2005;65(12):1863-1872. doi:10.1212/01.wnl.0000187889.17253.b1
 26. Fazekas F, Chawluk JB, Alavi A, Hurtig HI, Zimmerman RA. MR signal abnormalities at 1.5 T in Alzheimer's dementia and normal aging. *AJNR.* 1987;8(3):421-426.
 27. Kantarci K, Petersen RC, Przybelski SA, et al. Hippocampal volumes, proton magnetic resonance spectroscopy metabolites, and cerebrovascular disease in mild cognitive impairment subtypes. *Arch Neurol.* 2008;65(12):1621-1628. doi:10.1001/archneur.65.12.1621
 28. Oppedal K, Ferreira D, Cavallin L, et al. A signature pattern of cortical atrophy in dementia with Lewy bodies: a study on 333 patients from the European DLB consortium. *Alzheimers Dement.* 2019;15(3):400-409. doi:10.1016/j.jalz.2018.09.011
 29. Ferreira D, Verhagen C, Hernández-Cabrera JA, et al. Distinct subtypes of Alzheimer's disease based on patterns of brain atrophy: longitudinal trajectories and clinical applications. *Sci Rep.* 2017;7:46263. doi:10.1038/srep46263
 30. Ferreira D, Cavallin L, Larsson EM, et al. Practical cut-offs for visual rating scales of medial temporal, frontal and posterior atrophy in Alzheimer's disease and mild cognitive impairment. *J Intern Med.* 2015;278(3):277-290. doi:10.1111/joim.12358
 31. Ferreira D, Cavallin L, Granberg T, et al. Quantitative validation of a visual rating scale for frontal atrophy: associations with clinical status, APOE e4, CSF biomarkers and cognition. *Eur Radiol.* 2016;26(8):2597-2610. doi:10.1007/s00330-015-4101-9
 32. Scheltens P, Leys D, Barkhof F, et al. Atrophy of medial temporal lobes on MRI in "probable" Alzheimer's disease and normal ageing: diagnostic value and neuropsychological correlates. *J Neurol Neurosurg Psychiatry.* 1992;55(10):967-972. doi:10.1136/jnnp.55.10.967
 33. Koedam ELGE, Lehmann M, van der Flier WM, et al. Visual assessment of posterior atrophy development of a MRI rating scale. *Eur Radiol.* 2011;21(12):2618-2625. doi:10.1007/s00330-011-2205-4
 34. Schwarz CG, Gunter JL, Wiste HJ, et al. A large-scale comparison of cortical thickness and volume methods for measuring Alzheimer's disease severity. *Neuroimage Clin.* 2016;11:802-812. doi:10.1016/j.nicl.2016.05.017
 35. Schwarz CG, Gunter JL, Ward CP, et al. The mayo clinic adult lifespan template: better quantification across the lifespan. In: *Alzheimer's Association International Conference (AAIC): Poster Presentations.* 2017;13:792. doi:10.1016/j.jalz.2017.06.1071
 36. Avants BB, Epstein CL, Grossman M, Gee JC. Symmetric diffeomorphic image registration with cross-correlation: evaluating automated labeling of elderly and neurodegenerative brain. *Med Image Anal.* 2008;12(1):26-41. doi:10.1016/j.media.2007.06.004
 37. Das SR, Avants BB, Grossman M, Gee JC. Registration based cortical thickness measurement. *Neuroimage.* 2009;45(3):867-879. doi:10.1016/j.neuroimage.2008.12.016
 38. Genovese CR, Lazar NA, Nichols T. Thresholding of statistical maps in functional neuroimaging using the false discovery rate. *Neuroimage.* 2002;15(4):870-878. doi:10.1006/nimg.2001.1037
 39. Ferreira D. Structural imaging in dementia with Lewy bodies: the potential of multivariate data analysis. *Psychiatry Res Neuroimaging.* 2020;306:111180. doi:10.1016/j.pscychresns.2020.111180
 40. Williams SS, Williams J, Combrinck M, Christie S, Smith AD, McShane R. Olfactory impairment is more marked in patients with mild dementia with Lewy bodies than those with mild Alzheimer disease. *J Neurol Neurosurg Psychiatry.* 2009;80(6):667-670. doi:10.1136/jnnp.2008.155895
 41. Beach TG, Adler CH, Zhang N, et al. Severe hyposmia distinguishes neuropathologically confirmed dementia with Lewy bodies from Alzheimer's disease dementia. *PLoS One.* 2020;15(4):e0231720. doi:10.1371/journal.pone.0231720
 42. Thomas AJ, Hamilton CA, Barker S, et al. Olfactory impairment in mild cognitive impairment with Lewy bodies and Alzheimer's disease. *Int Psychogeriatr.* 2022;34(6):585-592. doi:10.1017/S1041610221001265
 43. McKeith IG, Boeve BF, Dickson DW, et al. Diagnosis and management of dementia with Lewy bodies: fourth consensus report of the DLB Consortium. *Neurology.* 2017;89(1):88-100. doi:10.1212/WNL.0000000000004058
 44. Inguanzo A, Poulakis K, Mohanty R, et al. MRI data-driven clustering reveals different subtypes of Dementia with Lewy bodies. *npj Parkinsons Dis.* 2023;9(1):5. doi:https://doi.org/10.1038/s41531-023-00448-6
 45. Garcia-Falgueras A, Junque C, Giménez M, Caldú X, Segovia S, Guillamon A. Sex differences in the human olfactory system. *Brain Res.* 2006;1116:103-111. doi:10.1016/j.brainres.2006.07.115
 46. Alotaibi MM, De Marco M, Venneri A. Sex differences in olfactory cortex neuronal loss in aging. *Front Hum Neurosci.* 2023;17:1130200. doi:10.3389/fnhum.2023.1130200
 47. Campabadal A, Segura B, Junque C, Iranzo A. Structural and functional magnetic resonance imaging in isolated REM sleep behavior disorder:

- a systematic review of studies using neuroimaging software. *Sleep Med Rev.* 2021;59:101495. doi:10.1016/j.smrv.2021.101495
48. Bustamante-Barrientos FA, Méndez-Ruette M, Ortloff A, et al. The impact of estrogen and estrogen-like molecules in neurogenesis and neurodegeneration: beneficial or harmful? *Front Cell Neurosci.* 2021;15:636176. doi:10.3389/fncel.2021.636176
 49. Kantarci K, Tosakulwong N, Lesnick TG, et al. Brain structure and cognition 3 years after the end of an early menopausal hormone therapy trial. *Neurology.* 2018;90(16):e1404-e1412. doi:10.1212/WNL.0000000000005325
 50. Pezzoli S, Cagnin A, Antonini A, Venneri A. Frontal and subcortical contribution to visual hallucinations in dementia with Lewy bodies and Parkinson's disease. *Postgrad Med.* 2019;131(7):509-522. doi:10.1080/00325481.2019.1656515
 51. Ritchie SJ, Cox SR, Shen X, et al. Sex differences in the adult human brain: evidence from 5216 UK biobank participants. *Cereb Cortex.* 2018;28(8):2959-2975. doi:10.1093/cercor/bhy109
 52. Christova P, Georgopoulos AP. Differential reduction of gray matter volume with age in 35 cortical areas in men (more) and women (less). *J Neurophysiol.* 2023;129(4):894-899. doi:10.1152/jn.00066.2023
 53. Yadav SK, Kathiresan N, Mohan S, et al. Gender-based analysis of cortical thickness and structural connectivity in Parkinson's disease. *J Neurol.* 2016;263(11):2308-2318. doi:10.1007/s00415-016-8265-2
 54. Tremblay C, Abbasi N, Zeighami Y, et al. Sex effects on brain structure in de novo Parkinson's disease: a multimodal neuroimaging study. *Brain.* 2020;143(10):3052-3066. doi:10.1093/brain/awaa234
 55. Oltra J, Uribe C, Campabadal A, et al. Sex differences in brain and cognition in de novo Parkinson's Disease. *Front Aging Neurosci.* 2021;13:791532. doi:10.3389/fnagi.2021.791532
 56. Oltra J, Segura B, Uribe C, et al. Sex differences in brain atrophy and cognitive impairment in Parkinson's disease patients with and without probable rapid eye movement sleep behavior disorder. *J Neurol.* 2022;269:1591-1599. doi:10.1007/s00415-021-10728-x
 57. Li H, Jia X, Chen M, Jia X, Yang Q. Sex differences in brain structure in de novo Parkinson's disease: a cross-sectional and longitudinal neuroimaging study. *J Parkinsons Dis.* doi:10.3233/JPD-225125. Published online 2023.
 58. Kurasz AM, Smith GE, McFarland MG, Armstrong MJ, O'Bryant S. Ethnoracial differences in Lewy body diseases with cognitive impairment. *J Alzheimer's Dis.* 2020;77(1):165-174. doi:10.3233/JAD-200395

SUPPORTING INFORMATION

Additional supporting information can be found online in the Supporting Information section at the end of this article.

How to cite this article: Oltra J, Habich A, Schwarz CG, et al. Sex differences in brain atrophy in dementia with Lewy bodies. *Alzheimer's Dement.* 2024;20:1815–1826. <https://doi.org/10.1002/alz.13571>