

# *Wolbachia* strains *wMel* and *wAlbB* differentially affect *Aedes aegypti* traits related to fecundity

Rafael Maciel-de-Freitas,<sup>1,2,3</sup> Felix G. Sauer,<sup>1</sup> Konstantin Kliemke,<sup>1</sup> Gabriela A. Garcia,<sup>2</sup> Márcio G. Pavan,<sup>2</sup> Mariana R. David,<sup>2</sup> Jonas Schmidt-Chanasit,<sup>1,4</sup> Ary Hoffmann,<sup>5</sup> Renke Lühken<sup>1</sup>

**AUTHOR AFFILIATIONS** See affiliation list on p. 16.

**ABSTRACT** Two *Wolbachia* strains, *wMel* and *wAlbB*, have been transfected into *Aedes aegypti* mosquitoes for population replacement with the aim of reducing dengue transmission. Epidemiological data from various endemic sites suggest a pronounced decrease in dengue transmission after implementing this strategy. In this study, we investigated the impact of the *Wolbachia* strains *wMel* and *wAlbB* on *Ae. aegypti* fitness in a common genetic background. We found that *Ae. aegypti* females infected with the *wMel* strain exhibited several significant differences compared with those infected with the *wAlbB* strain. Specifically, *wMel*-infected females laid significantly fewer eggs, ingested a lower amount of blood, had a reduced egg production rate, and exhibited a decreased *Wolbachia* density at a later age compared with mosquitoes infected with the *wAlbB* strain. Conversely, the *wAlbB* strain showed only mild negative effects when compared with *Wolbachia*-uninfected specimens. These differential effects on *Ae. aegypti* fitness following infection with either *wMel* or *wAlbB* may have important implications for the success of population replacement strategies in invading native *Ae. aegypti* populations in endemic settings. Further research is needed to better understand the underlying mechanisms responsible for these differences in fitness effects and their potential impact on the long-term efficacy of *Wolbachia*-based dengue control programs.

**IMPORTANCE** The transmission of arboviruses such as dengue, Zika, and chikungunya is on the rise globally. Among the most promising strategies to reduce arbovirus burden is the release of one out of two strains of *Wolbachia*-infected *Aedes aegypti*: *wMel* and *wAlbB*. One critical aspect of whether this approach will succeed involves the fitness cost of either *Wolbachia* strains on mosquito life history traits. For instance, we found that *wMel*-infected *Ae. aegypti* females laid significantly fewer eggs, ingested a lower amount of blood, had a reduced egg production rate, and exhibited a decreased *Wolbachia* density at a later age compared with mosquitoes infected with the *wAlbB* strain. Conversely, the *wAlbB* strain showed only mild negative effects when compared with *Wolbachia*-uninfected specimens. These differential effects on mosquito fitness following infection with either *wMel* or *wAlbB* may have important implications for the success of population replacement strategies in invading native *Ae. aegypti* populations.

**KEYWORDS** *Aedes aegypti*, *Wolbachia*, vectorial capacity, disease transmission, blocking, life history traits

Arthropods usually host a wide variety of microorganisms, some of which live in an intimate and long-term biological interaction with their host. The interactions between insects and viruses, bacteria, and fungi can be classified into a gradient ranging from benefits to both parties involving mutualism (1) to antagonistic interactions resulting in parasitism (2, 3), both of which are driven by evolutionary changes

**Editor** Pradip Sen, CSIR - Institute of Microbial Technology, Chandigarh, India

Address correspondence to Rafael Maciel-de-Freitas, freitas@ioc.fiocruz.br.

The authors declare no conflict of interest.

See the funding table on p. 16.

**Received** 17 January 2024

**Accepted** 11 March 2024

**Published** 14 March 2024

Copyright © 2024 Maciel-de-Freitas et al. This is an open-access article distributed under the terms of the [Creative Commons Attribution 4.0 International license](https://creativecommons.org/licenses/by/4.0/).

in the hosts and the microbes (4, 5). Microorganisms are important modulators of host phenotypes, providing heritable variation acted upon by natural selection (6). Host-parasite interactions represent one of the strongest selection pressures in nature, with considerable impact on the ecology and evolution of the microbes and thus on disease epidemiology (7). These biological interactions in a changing environment form part of a complex ecosystem shaping disease transmission.

Due to epidemiological impacts on human health, it is of paramount importance to understand host-parasite interactions within the context of vector-borne diseases. Among mosquitoes, special interest has been given to *Aedes aegypti*, the primary vector of arboviruses such as dengue (DENV), Zika (ZIKV), and chikungunya (CHIKV). DENV is organized in four distinct serotypes (DENV-1, -2, -3, and -4), with an estimated infection of 390 million people per year globally (8–10). In 2013, ZIKV rapidly disseminated from the Pacific islands to Southern America and became a global public health emergence due to its association with microcephaly in newborns (11). At least two CHIKV lineages have spread over the world (ECSA—the East-Central-South Africa and the Asian lineage), causing severe outbreaks in sites where *Ae. aegypti* was abundant (12, 13).

In the absence of widely applicable, effective vaccines for most arboviruses, mitigation efforts rely on suppressing and maintaining vector populations below a threshold at which outbreaks are unlikely to occur (14). Traditional vector control methods have had limited success in managing arbovirus outbreaks, due to factors such as widespread insecticide resistance in vector populations and the huge effort required in targeting key breeding sites in urban settings in the long term (15–17). Therefore, new strategies to supplement traditional vector control methods need to be developed to manage mosquito-borne diseases. One innovative approach currently undertaken in at least 14 countries is the release of *Ae. aegypti* carrying *Wolbachia*, an endosymbiont naturally present in around 40% of insect species but naturally absent from *Ae. aegypti* (18). *Wolbachia* can be successfully established in *Ae. aegypti* using embryo cytoplasm microinjection (19). So far, two artificially *Wolbachia*-infected strains of *Ae. aegypti* have been released in the field: *wMel* (transinfected from *Drosophila melanogaster*) and *wAlbB* (transinfected from *Ae. albopictus*). *Wolbachia* strains in *Ae. aegypti* can induce density-dependent blocking of DENV, ZIKV, and CHIKV, which is favored by the high density of this bacterium in salivary glands (20–22). The spread of *Wolbachia* in the mosquito population following release is facilitated by two attributes: maternal transmission to offspring, coupled with cytoplasmic incompatibility, wherein *Wolbachia*-infected males induce sterility in wild females, producing a frequency-dependent fitness advantage for *Wolbachia*-infected females (23, 24). So far, *wMel* or *wAlbB* strains have been released in countries such as Australia, Brazil, Indonesia, Malaysia, and Vietnam to replace natural populations highly competent to arbovirus by *Wolbachia*-infected specimens with reduced vector competence (25–28).

Although available data point to a reduction in dengue incidence due to *Wolbachia* deployment (28–30), a number of important issues remain unresolved regarding both the short- and long-term interaction between the bacterium and *Ae. aegypti* mosquitoes. For example, *Wolbachia* is known to affect invertebrate fitness and reproduction and generate several physiological changes in mosquitoes (31–34), but so far, there are limited data on how the released strains (*wMel* and *wAlbB*) affect *Ae. aegypti* reproductive strategies. Trade-offs within an organism's life history result from allocation of a fixed resource budget among growth, survival, and reproduction (35, 36). For instance, *wMel*-infected *Ae. aegypti* have a significant decrease in egg hatching, which could likely limit the spread of this strain within a native *Ae. aegypti* population (26, 37). There remains a gap in understanding whether the two *Wolbachia* strains currently deployed can impact *Ae. aegypti* reproductive tactics, particularly on genetic backgrounds from areas where the strategy is being deployed. Therefore, this study aimed to analyze the effect of *Wolbachia* infection on *Ae. aegypti* with a Brazilian genetic background for different fitness-related mosquito traits, including wing length, wing shape, blood meal size, and fecundity.

## MATERIALS AND METHODS

### Wild mosquitoes and backcrossing

We used three *Ae. aegypti* strains in this study. To represent a *Wolbachia*-uninfected field population, we sampled eggs in the neighborhood of Urca (22°56′44″S, 43°09′42″W). Previous reports highlighted that insecticide resistance in *Wolbachia*-carrying mosquitoes (wMel strain) plays a role in the bacterium being able to invade into wild *Ae. aegypti* populations. Mosquitoes from Rio de Janeiro are resistant to pyrethroids, and insecticide resistance is a widely spread phenomenon in Brazil (16, 26, 38–41), highlighting the importance of controlling the genetic background. Urca is located 12 km away from the southern geographic limit of the area in which *Wolbachia* has been released in Rio de Janeiro. Thus, *Wolbachia*-infected individuals are not expected to be present in this neighborhood (42). We sampled eggs in Urca using 60 ovitraps with wooden paddles replaced weekly for ~2 months until we obtained a minimum of 10,000 eggs to capture local genetic diversity. Eggs were hatched in plastic containers with 3 L of tap water and yeast in the week following their collection in the field. Larvae were fed daily with fish food (4.5 mg) until the pupae stage. Pupae were transferred to 30 × 30 × 30 cm cages (BugDorms, Taichung, Taiwan) to allow adult emergence and mating. Two cages with at least 500 *Ae. aegypti* females in each were established, with females blood fed twice a week to obtain eggs.

The wMel and wAlbB strains were originally created through microinjection into *Ae. aegypti* eggs of an Australian background (43, 44). By backcrossing *Ae. aegypti* females from the lines to field-collected males for five consecutive generations, we ensured that the material used in experiments has a similar genetic background to those of field mosquitoes, allowing us to isolate phenotypic effects specifically associated with *Wolbachia*. After colonies were closed, i.e., when the backcrossing was concluded, genetic variation in the colonies of *Wolbachia* lines and genetic similarity to the Urca population was maintained by ensuring that around 50% of males were from the *Wolbachia*-uninfected Urca-derived colony every two generations (26). By doing so, we refreshed the genetic background of infected colonies, ensuring that mosquitoes from the three strains have a similar genetic background. All colonies were maintained with around 500 females each in an insectary at 27 ± 2°C, 14:10 light:dark photoperiod, >60% relative humidity. For the experiments reported herein, we used eggs derived from two independent cages of each colony, i.e., in duplicate. The egg hatching and larval rearing methods were the same as stated above.

### Blood feeding

Adult mosquitoes were supplied with 8% sucrose diet *ad libitum* until 24 h before blood feeding. A total of six cages was used in this experiment, two for each mosquito strain, with males and females mixed from the two cages. Each cage had approximately 250 *Ae. aegypti* females. A blood meal was offered for one cage of each strain when *Ae. aegypti* females were approximately 1 week old (7–8 days after emergence). Females in the second cage of a strain received their first blood meal when they were 3 weeks old (21–23 days after emergence). Given what is known about *Ae. aegypti* reproductive biology, we expected that after 1 week, all females would have been inseminated. Blood feeding was carried out with expired human blood group 0 purchased as blood bags from local blood banks. The blood donor's private information is unknown, i.e., ethical approval is not required. The blood was offered with a Hemotek Membrane Feeding System (Hemotek Ltd., Blackburn, UK), and females were allowed to feed for half an hour. Visually completely engorged females were individualized in 50-mL plastic vials containing moistened cotton overlaid with filter paper as oviposition substrate on the bottom and a sugar solution 8% *ad libitum* on the top. Tubes were covered on the top with mosquito netting.

## Blood meal size and egg production

Females remained inside the vials for 1 week after blood feeding in the same insectary conditions as the colonies described above. After this period, mosquitoes were killed by freezing and stored for wing removal and *Wolbachia* quantification. Eggs laid on the filter paper were counted with the aid of a stereomicroscope at 10× magnification (Leica M205 C, Leica Microsystems, Wetzlar, Germany), recorded, and later discarded for estimating the blood meal size. We measured the blood meal size by quantifying the hematin from mosquito feces on the filter paper. The filter papers were added to a 2-mL cuvette (Sarstedt, Nümbrecht, Germany) containing 1 mL of a 1% lithium carbonate (Sigma Aldrich, Burlington, USA) solution to dilute the feces. A standard line was prepared by diluting known amounts of blood (0, 0.8, 1.6, 2.4, and 3.2  $\mu$ L) and measuring the corresponding hematin in a spectrophotometer (Thermo BioMate 3) with an absorbance at 387 nM (45–48). The standard line had an  $R^2$  of 0.9832 in a linear regression. By dividing the number of eggs laid per female by the amount of blood ingested (transformed using the standard), we were able to evaluate the individual efficiency of egg production with a known amount of blood, a ratio expressed as eggs/ $\mu$ g.

## Wing shape and length

The right and left wings of each specimen were removed and mounted under a cover slip (15 × 15 mm) with Euparal (Carl Roth, Karlsruhe, Germany). Pictures of each wing were taken with a stereomicroscope (as above) at 20× magnification. Fiji (49), a bioscience package of ImageJ (50), was used to digitize 18 landmarks. The landmark selection was in accordance with other studies using geometric morphometrics to analyze the wing shape of mosquitoes (51–53). The wing length was measured as the distance from the axillary incision to the apical margin excluding the fringe (54).

## *Wolbachia* quantification

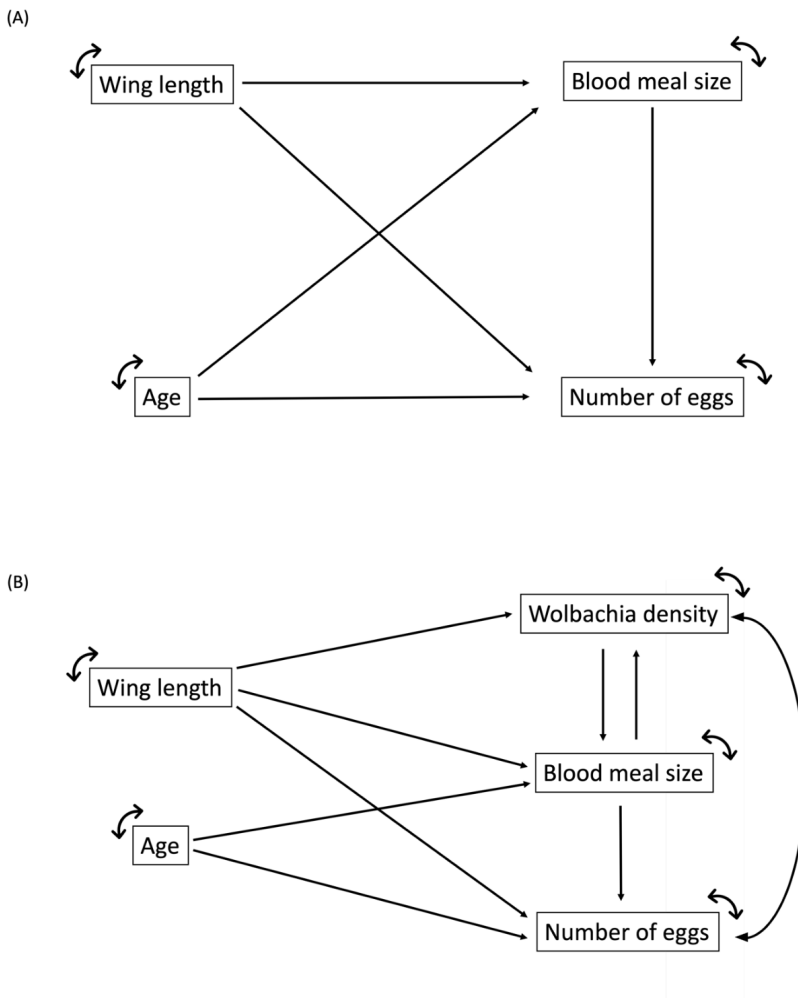
*Wolbachia* was quantified on the whole body of each specimen without the wings. *Wolbachia* DNA was extracted with a DNeasy Blood & Tissue Kits (Qiagen, Hilden, Germany), following the manufacturer's instructions and previous experiments (44, 55, 56). Detection of *Wolbachia* wMel strain was based on amplification of the WD0513 gene. The following primers were used to amplify a fragment of 110 bp: TM513-F: 5'-CAAATTGCTCTTGCTCCTGTGG-3' and TM513-R: 5'-GGGTGTTAAGCAGAGTTACGG-3', and the probe 5'-FAM-TGAAATGGAAAAATTGGCGAGGTGTAGG-3BHQ1-3'. In the same reaction, a ribosomal gene from *Ae. aegypti* (RPS17) with the length of 68 bp was amplified with the two primers: RPS17-F: 5'-TCCGTGGTATCTCCATCAAGCT-3' and RPS-R: 5'-CACTTCGGCAGTAGTTGTC-3' and the probe RPS17: 5'-HEX-CAGGAGGAGGAACGTGAGCGCAG-BHQ1-3'. The amplification was carried out on a Qiagen Rotor-Gene Q using Taqman Universal PCR Master Mix (Thermo Scientific, Waltham, USA) following the manufacturer's instructions. The relative quantification of wMel strain relative quantification was performed according to the procedure described elsewhere (55). The *Wolbachia* wAlbB strain was detected by high-resolution melting polymerase chain reaction (qPCR-HRM) (56) with 1:10 diluted DNA using the following wAlbB1-specific primers: wAlbB1-F (5'-CTTACCTCCTGCACAACAA-3') and wAlbB1-R (5'-GGATTGTCCAGTGGCCTTA-3'), as well as universal mosquito primers: mRpS6\_F (5'-AGTTGAACGTATCGTTCCCGCTAC-3') and mRpS6\_R (5'-GAAGTGACGCAGCTTGTGGTCGTCC-3'), which target the conserved region of the RpS6 gene, and *Ae. aegypti* primers aRpS6-F (5'-ATCAAGAAGCGCCGTGTCG-3') and aRpS6-R (5'-CAGGTGCAGGATCTTCATGTATTTCG-3'), which target the *Ae. aegypti*-specific polymorphisms within RpS6 and do not amplify *Ae. albopictus*. Reactions were run as 384-well plates in a LightCycler 480 II (Roche, Basel, Switzerland). qPCR-HRM was performed following the same cycling conditions as described elsewhere (28). Samples were considered positive for *Wolbachia* when the  $T_m$  for the amplicon produced by the *Ae. aegypti* primers was at least 84°C and the  $T_m$  for the *Wolbachia*-primer amplicon was around 80°C. Differences between the Crossing points ( $C_p$ ) of the *Wolbachia* and *Ae.*

*aegypti* markers were transformed by  $2^n$  to obtain approximate estimates of *Wolbachia* density. Negative and positive controls were used in all reactions as non-infected strain and lab colony samples that tested positive in previous assays (37, 57).

## Data analysis

The data set comprised six variables: number of eggs (count data); wing length, blood meal size, and *Wolbachia* density (continuous variables); age (1st or 3rd week); and strain (*Wolbachia*-uninfected, *wMel*, and *wAlbB*) as categorical variables. Variables were treated as response or explanatory variables depending on the research hypothesis tested. Depending on the normality of the response variable, comparisons within categories of interest were performed using one-way analysis of variance (ANOVA), followed by Tukey-Kramer post test, or Kruskal Wallis (KW) followed by pairwise Wilcoxon test when the null hypothesis of equal means or medians across treatments was rejected. In both cases, the Bonferroni-adjusted significance level was adopted. To verify the effects of explanatory variables on the response variables with count or continuous data, we performed Generalized Linear Model (GLM) analyses and followed a model selection approach. The GLMs were developed as follows. First, we tested the normality and homoscedasticity of variances within the count and continuous variables using the Shapiro-Wilk test. The family distribution of the response variable was assessed through the Cullen and Fray graph, and dispersion was tested using the “RT4Bio” and “fitdistrplus” packages [v1.1; (58, 59)]. The effects of *Wolbachia* density (for the *wMel* and *wAlbB* groups), blood meal size, wing length, female age, and strain on the number of eggs laid per *Ae. aegypti* female were analyzed with GLM with a negative binomial distribution. This distribution was preferred over the traditionally used Poisson distribution, because data exhibited overdispersion (i.e., variance was larger than the mean), confirmed by Pearson’s chi-squared test and dispersion statistic  $> 1$ . Blood meal size and *Wolbachia* density as response variable were analyzed by GLMs with a Gaussian distribution. The variance inflation factor of the models were accessed using the “vcd” package [v1.4–11 (60)]. Variables were removed when multicollinearity was detected, i.e., when GVIF  $> 5$ . The most informative and parsimonious model was selected through delta Akaike’s Information Criteria scores corrected for small sample sizes ( $\Delta\text{AICc}$ ). Akaike weights were used to assess the uncertainty of model selection, which quantifies the probability that the model is the best among all models built for that response variable (61, 62). For each set of models created for a given response variable, we selected the best model(s) for interpretation of its parameters if  $\Delta\text{AICc}$  was less than 2.0 (61, 62). Multicollinearity was checked again in the best model. Finally, the assumptions of the best model were examined by checking heteroscedasticity, residual dispersion, and the presence of outliers with the package “DHARMA” [v.0.4.6 (63)]. All analyses were done in the R environment (64).

Path analysis or Structural Equation Modeling (SEM) is a multivariate regression technique that allows the direction and magnitude of each of the direct effects (path coefficients) on the response variable (65) to be obtained. The main purpose of SEM is to confirm an agreement between specific causal hypotheses and empirical data, which is assessed through a goodness-of-fit statistic between the observed and expected correlations (65, 66). We established a causal relation model to assess whether *Ae. aegypti* age, wing length, blood meal size, and *Wolbachia* density (except for field strain) affect the number of eggs laid by female mosquitoes (Fig. 1). A principal component analysis (PCA) using the package “psych” in R (67) showed the data differ among the three strains, with no overlapping clusters between *Wolbachia*-infected strains and the *Wolbachia*-uninfected strain (Fig. S1). Therefore, we built a path diagram based on the SEM approach for each strain. Our global model used mosquito age as an exogenous variable and wing length, blood meal size, *Wolbachia* density (when possible), and the number of eggs as endogenous variables. Alternative path diagrams were tested by comparing coefficients of non-determination from reduced models to those of the full model using the same model selection approach described above. Total-effect



**FIG 1** Hypothesized path diagram considering *Ae. aegypti* age, wing length, blood meal size, and the number of eggs. (A) The *Wolbachia*-uninfected field strain; (B) the two strains with *Wolbachia* (*wMel* and *wAlbB* strains). The notations of the path diagram are as follows: age is an exogenous variable, whereas wing length, blood meal size, *Wolbachia* density, and the number of eggs are endogenous variables. The arrows represent the directional relationship, and circled double arrows represent the variance and the residual errors of exogenous and endogenous variables, respectively.

coefficients (the sum of the direct and indirect effects of one variable on another) were calculated for each of the endogenous variables in the path diagram. We assessed the model fit of the selected path diagram for each strain using the following model fit index: chi-square test ( $\chi^2$ ), Comparative Fit Index (CFI), Tucker-Lewis Index (TLI), Root Mean Square Error of Approximation (RMSEA), and the Standardized Root Mean Square Residual (SRMSR). All SEM analyses were done in R with the “lavaan” package [v 0.6–15 (64, 68)].

The two-dimensional landmark coordinates of the 18 vein crosses were used to analyze the wing shape of the mosquitoes. The landmark coordinates were aligned by a Generalized Procrustes Analysis using the R package geomorph (version 4.0.1) (69). The wing shape variation between specimens was visualized with a PCA. The differences in the wing shape between the three strains (*Urca*, *wMel*, and *wAlbB*) were statistically compared by a Procrustes ANOVA using the *proc.D.lm* function (with 1,000 permutations). In addition, we calculated the strain-specific morphological disparity with the “*morphol.disparity*” function. This function calculates the Procrustes variance for the three different strains using the residuals of a linear model and can, thus, provide

information about morphological diversity within the strains. The statistical significance of the calculated Procrustes variance between the three strains was checked pairwise using a randomized permutation test with 499 iterations. All wing shape analyses were conducted separately for the right and the left wing to check the consistency of the results and to avoid duplicated measurements per specimen in the same analysis (70).

## RESULTS

Only three mosquitoes died over the period that insects were monitored. Thus, we monitored the blood meal size, wing length, and number of eggs in a total of 417 *Ae. aegypti* females, 140 from the *Wolbachia*-free strain, 139 from *wMel*, and 138 from *wAlbB*. The three deaths were recorded in mosquitoes that were blood fed in their 3rd week post emergence. All three strains had 75 *Ae. aegypti* females blood feeding in their 1st week, whereas in the 3rd week, we had 65 insects from the *Wolbachia*-free strain, 64 from *wMel*, and 63 from *wAlbB*.

### Number of eggs

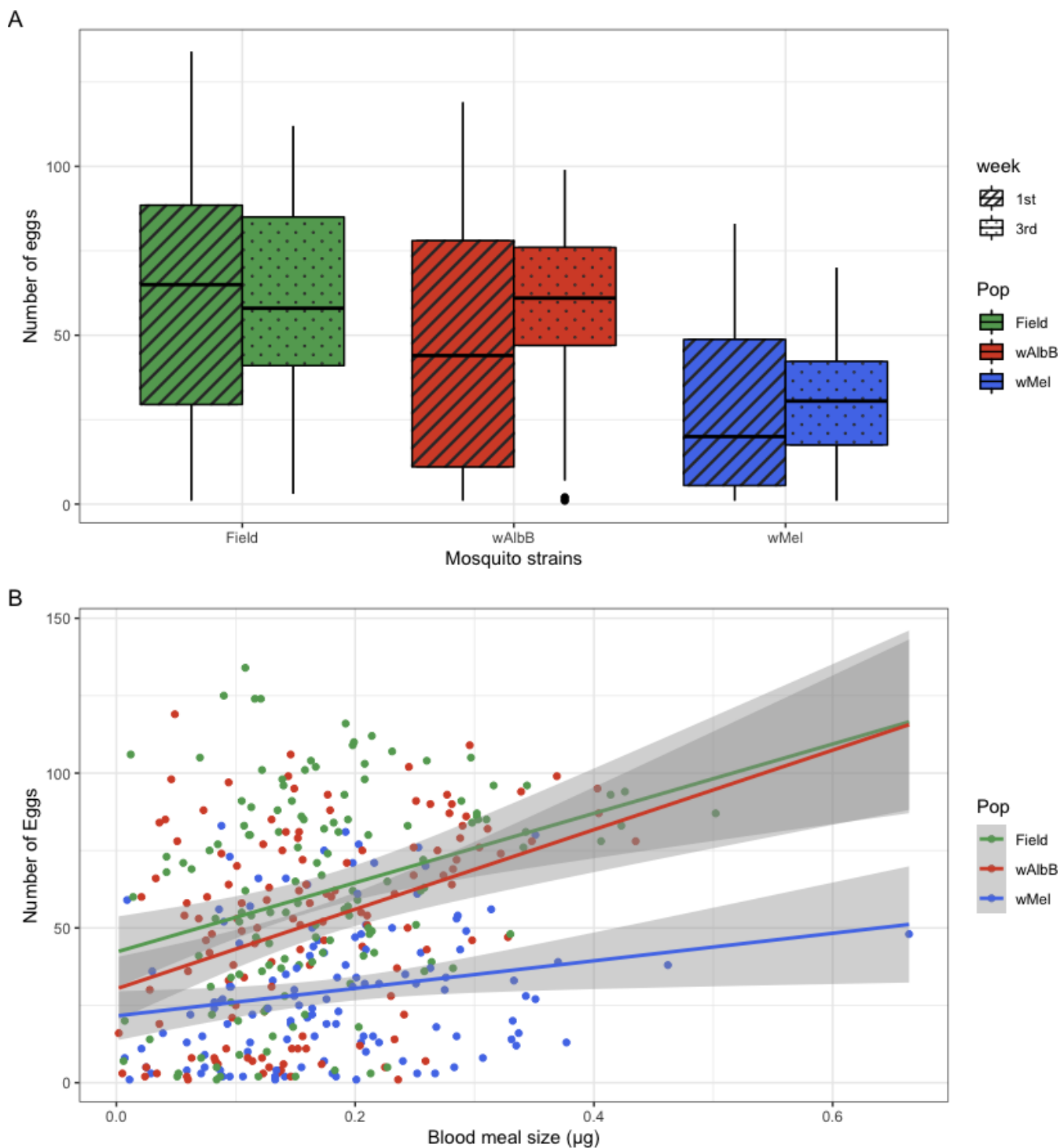
From the 417 *Ae. aegypti* females, 47 (11.2%) females had not laid any eggs 1 week after blood feeding (8 from the field, 21 from *wMel*, and 18 from *wAlbB* strain). The maximum number of eggs laid per female was 134. The number of eggs laid by *Ae. aegypti* females varied significantly among strains (KW:  $\chi^2$ : 65.56,  $df = 2$ ,  $P < 0.001$ ), but not with age (KW:  $\chi^2$ : 2.88,  $df = 1$ ,  $P = 0.089$ ) (Fig. 2A), with *Ae. aegypti* females from *wMel* laying significantly fewer eggs than the field *Wolbachia*-uninfected strain ( $P < 0.001$ ). There was no detectable difference between the number of eggs laid by *wAlbB* and the field strain ( $P = 0.21$ ).

When we used a GLM with a negative binomial distribution to examine various effects on the number of eggs laid by *Ae. aegypti* females, both infected strains had lower fecundity than the *Wolbachia*-uninfected field strain (Table 1). The blood meal size was positively associated with the number of eggs laid (Table 1). However, the strength of the association was not the same among the three strains, with *wAlbB* mosquitoes presenting a trend similar to females from the uninfected strain and *wMel* mosquitoes showing a weaker association than for the other two strains (Fig. 2B).

### Blood meal size

We estimated the blood meal size by quantifying the hematin present on the filter paper. *Aedes aegypti* females from the three strains ingested more blood when fed in the 3rd than in the 1st week (ANOVA,  $F_{1,392} = 106.6$ ,  $P < 0.001$ ) (Fig. 3A). However, the amount of blood ingested did not vary according to the strain (ANOVA,  $F_{1,391} = 1.169$ ,  $P = 0.312$ ).

The best Gaussian GLM considering blood meal size as the response variable involved no effect of the mosquito strain on the amount of blood ingested by *Ae. aegypti* females. The wing length of mosquitoes was positively correlated with blood meal size (Table 2), although the association varied among strains (Fig. 3B). It is worth noting that the *Wolbachia*-free strain ingested similar amounts of blood regardless of wing length, whereas *Wolbachia*-infected groups behaved similarly, with *wMel* and *wAlbB* females ingesting more blood when they were bigger. However, the egg production rate significantly varied among strains (KW:  $\chi^2$ : 73.71,  $df = 2$ ,  $P < 0.001$ ), with *Ae. aegypti* infected by the *wMel* strain producing less egg per blood ingested when compared with *wAlbB* and the *Wolbachia*-uninfected strain ( $P < 0.001$  for both paired comparison). The *Wolbachia*-uninfected and *wAlbB* strains had similar egg production ( $P = 0.12$ ). When combined with fecundity and blood meal size variation within age and mosquito strain, the results show that mosquitoes had similar fecundity over ages tested but ingested more blood in the 3rd week, with an overall loss in egg production relative to the amount of blood ingested (Fig. 3C). These loss effects were stronger in the *wMel* females.



**FIG 2** Fecundity of *Aedes aegypti* females from the three tested strains and its association with (A) age in weeks and (B) blood meal size. The shaded area in B represents the 95% confidence level interval for predictions from a linear model.

### *Wolbachia* density

The *Wolbachia* density was quantified through Reverse transcription-quantitative polymerase chain reaction (RT-qPCR), and wAlbB was present in higher densities in *Ae. aegypti* mosquitoes than wMel (ANOVA,  $F_{1,276} = 251.8, P < 0.001$ ) (Fig. 4A). At the later age tested, the density of wAlbB increased, but for wMel, it decreased (ANOVA,  $F_{1,276} =$



**TABLE 1** Results of the Generalized Linear Model (negative binomial) of the number of eggs laid by *Aedes aegypti* females from three different strains

Term	Estimate	SE	z-value	P value <sup>a</sup>
Strain (wAlbB)	-0.225	0.0968	2.946	0.0601
Strain (wMel)	-0.715	0.0956	-2.325	< <b>0.001</b>
Age (3rd)	-0.129	0.0879	-7.484	0.1403
Blood meal size	1.951	0.4699	-1.475	< <b>0.001</b>
Wing length	0.695	0.2417	2.877	<b>0.0040</b>

<sup>a</sup>P values under 0.05 are bold.

8.938,  $P = 0.003$ ) (Fig. 4B). The best model considering *Wolbachia* density as the response variable included an influence of mosquito strain, age, and an interaction between these two independent variables (Table 3).

### Wing size and shape

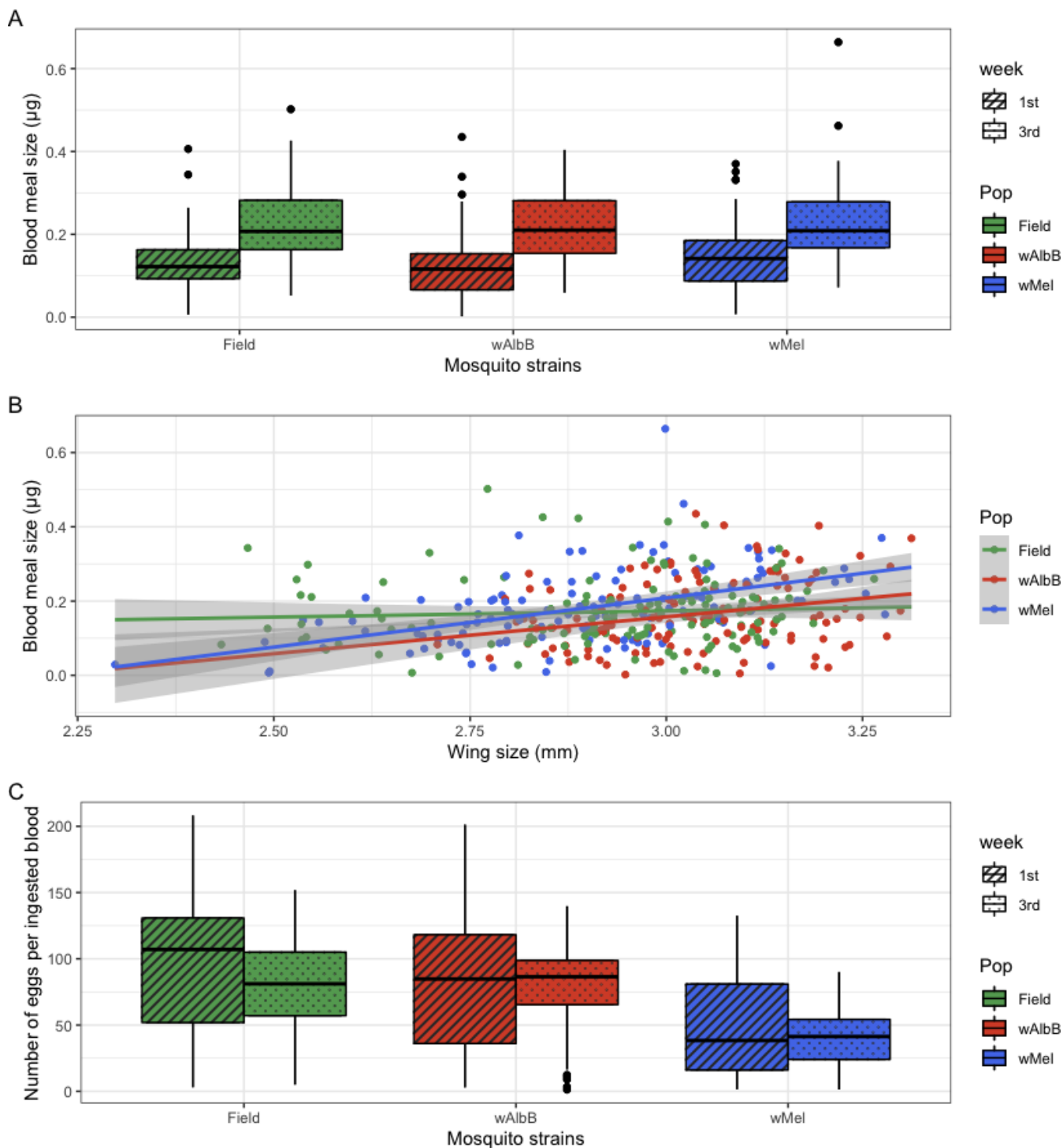
The wing size varied among strains (KW:  $\chi^2$ : 38.65,  $df = 2$ ,  $P < 0.001$ ), with wAlbB bigger than wMel ( $P < 0.001$ ) and the *Wolbachia*-uninfected strain ( $P < 0.001$ ). A marginally non-significant difference was observed between the wing length of wMel and *Wolbachia*-uninfected mosquitoes ( $P = 0.053$ ). The shape of the left wings did not differ significantly between the three strains (ANOVA,  $F_{2,316} = 1.5171$ ,  $R^2 = 0.0095$ ,  $P = 0.078$ ). In contrast, a small but significant difference was observed for the right wings of the three strains (ANOVA,  $F_{2,319} = 5.358$ ,  $R^2 = 0.0325$ ,  $P < 0.001$ ) (Fig. 5). The Procrustes variance of the right wings was 0.00125 for the *Wolbachia*-uninfected strain, 0.00123 for the wAlbB-infected strain, and 0.00126 for the wMel-infected strain. For the left wings, the Procrustes variance was 0.00122 for the field strain, 0.00119 for the wAlbB-infected strain, and 0.00119 for the wMel-infected strain. For both wing sides, pairwise comparisons of the Procrustes variance between the three strains did not reveal statistically significant differences, indicating a similar morphological diversity in the wings of the three strains (Fig. 5).

### Path analysis

The full model for each strain was classified as overidentified, i.e., with degrees of freedom  $\geq 1$  (Fig. S2). However, the path diagram of the best model differed for each strain. The best model for the *Wolbachia*-uninfected field strain was the full model, whereas for wMel and wAlbB, the best models were reduced versions of the full model, suggesting that metabolic pathways of egg production might be indirectly affected by *Wolbachia* presence (Fig. 6; Table 4). When we identified the best path models, some of the variables included in the full model were omitted for wMel and wAlbB. Fecundity in *Wolbachia*-uninfected mosquitoes was positively correlated with blood meal size and wing length but decreased with *Ae. aegypti* at an older age. By comparing the path diagrams of wMel and wAlbB mosquitoes, we observed a positive statistically significant effect of wing length and age on blood meal size for both strains but only in wMel did the blood meal size significantly affect fecundity. Unlike for uninfected specimens, females carrying either wMel or wAlbB showed a non-significant effect of wing size on fecundity. Regarding the presence of *Wolbachia*, the most evident difference between wMel and wAlbB was their effect on fecundity: a positive relation regarding wAlbB and a negative relationship for wMel. On the other hand, in both path diagrams, the effects of wing length and blood meal size on *Wolbachia* density was removed to increase model fit.

## DISCUSSION

The use of *Wolbachia* to mitigate arbovirus transmission is on the rise in the last few years, with approximately 15 countries conducting release interventions simultaneously. *Wolbachia* population replacement and suppression are influenced by the *Wolbachia*



**FIG 3** The effects of explanatory variables on the blood meal size of *Aedes aegypti* mosquitoes from three different populations. (A) Blood meal size variation according to mosquito strain, (B) effects of wing length on the amount of blood ingested by *Aedes aegypti* females, (C) egg production based on the amount of blood meal size by *Aedes aegypti* from a *Wolbachia*-uninfected field population, wAlbB, and wMel strains, expressed as egg/ $\mu\text{g}$ . The shaded area in B represents the 95% confidence level interval for predictions from a linear model.

strain considered, mosquito host factors, and environmental variables (24, 71–73). Nowadays, there are two *Wolbachia* strains transinfected into *Ae. aegypti* mosquitoes that are used for population replacement, and for both strains, data suggest a significant reduction in dengue transmission (28, 30, 74). In general, *Wolbachia* infection in

**TABLE 2** Results of the Generalized Linear Model (Gaussian) of the blood meal size of *Aedes aegypti* females from three different strains

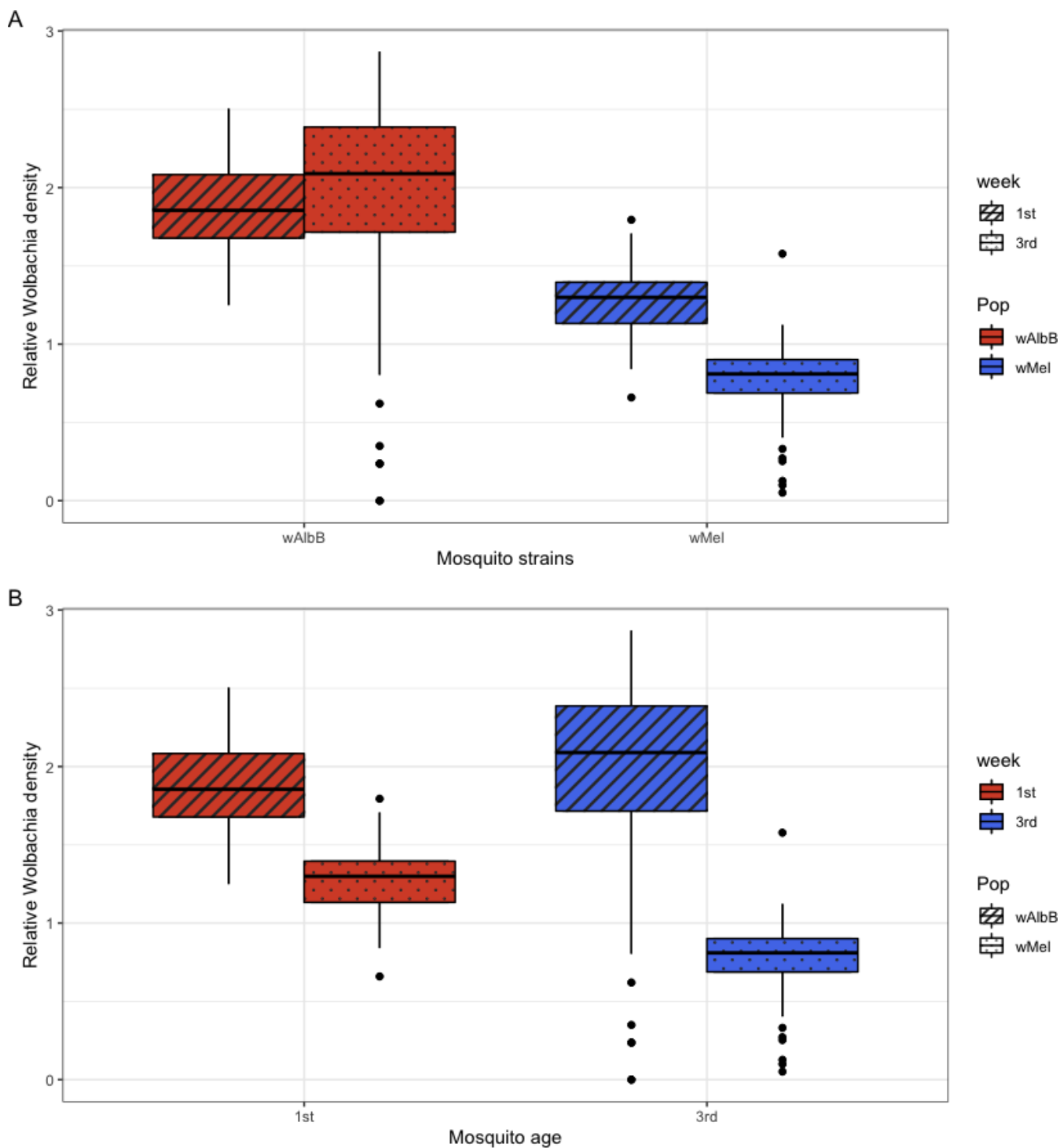
Term	Estimate	SE	t-value	P value <sup>a</sup>
Strain (wAlbB)	0.6295	0.3844	1.637	0.1023
Strain (wMel)	-0.0552	0.2857	-0.193	0.8468
Age (3rd)	0.2931	0.1459	2.009	<b>0.0452</b>
Wing	0.2087	0.0794	2.628	<b>0.0089</b>
Strain(wAlbB)*wing	-0.2142	0.1284	-1.668	0.0961
Strain(wMel)*wing	0.0384	0.0938	0.391	0.6960
Age(3rd)*wing	-0.0913	0.0499	-1.828	0.0683

<sup>a</sup>P values under 0.05 are bold.

*Ae. aegypti* causes a decrease in host fecundity and egg hatching, likely affecting the long-term *Wolbachia* stability under some specific field conditions, particularly those involving high temperatures (37, 75–77). Herein, we adopted a causal relation model followed by structural equation models to determine a path diagram determining how mosquito age, wing length, blood meal size, and *Wolbachia* density affects *Ae. aegypti* fecundity. We observed different path diagrams in the presence of wMel and wAlbB, which could potentially affect their success in invading native *Ae. aegypti* populations in endemic settings (26, 78, 79).

By testing a substantial sample size of three strains of *Ae. aegypti* (*Wolbachia*-uninfected *Ae. aegypti*, wMel-infected mosquitoes, and wAlbB-infected mosquitoes) in a Brazilian genetic background, we compared the impact of both *Wolbachia* strains on mosquito life history traits. We observed that wMel-infected mosquitoes laid significantly fewer eggs than control mosquitoes, whereas wAlbB-infected *Ae. aegypti* had a similar fecundity with control insects. There is evidence in the literature for the detrimental effects of both *Wolbachia* strains on *Ae. aegypti* fitness on host fecundity and fertility, although these effects are not always consistently observed (26, 34, 37, 75, 80, 81). The presence of *Wolbachia* may alter metabolic and physiological processes of *Ae. aegypti* leading to a trade-off impacting mosquito fecundity. For instance, the presence of wMel regulates proteins involved in reactive oxygen species production and regulates humoral immune response and antioxidant production in the ovaries and salivary glands of *Ae. aegypti* females (32, 33). On the other hand, we have not seen any effect of age on fecundity, although *Ae. aegypti* mosquitoes have a trend of reducing the number of eggs laid when aging (46, 82–84). One factor that could explain the lack of aging on the number of eggs laid in our experiment is based on the fact mosquitoes only received one single blood meal and were killed 1 week after for egg counting. Many adult mosquito females will take multiple blood meals during their lifespan, resulting in regular exposure to toxins and blood-meal induced oxidative stress through the secretion of proteolytic enzymes and peritrophic matrix components from midgut epithelial cells, uptake of amino acids, oligopeptides, and lipids through membrane-bound transporter proteins (85–87). Thus, blood feeding-induced mortality in mosquitoes is well characterized, and these mortality/feeding effects need to be considered when testing mosquito lifespan impacts.

Blood meal size, or the amount of blood taken in by female mosquitoes, is believed to regulate several aspects of their biology including host-seeking behavior and fecundity. An intriguing pattern observed for all the three strains is that *Ae. aegypti* females took in larger blood meals when they were 21–23 days old. The effects of aging on *Ae. aegypti* blood meal size have been explored in at least two studies, and in both of them, the amount of blood ingested over time remained stable (46, 88). A strain infected by *Wolbachia* wMelPop had decreased blood-feeding success, i.e., increased the number of attempted bites and reduced the blood meal size. Furthermore, a behavior termed as “bendy proboscis” was observed in wMelPop-infected mosquitoes after aging, highlighting potential negative effects of aging on mosquito traits (88). By analyzing the number of eggs produced per microliter of ingested blood (in a ratio expressed as eggs/μg),



**FIG 4** The effects of explanatory variables on *Wolbachia* density considering (A) mosquito populations and (B) mosquito age.

mosquitoes with either *wMel* or *wAlbB* exhibited reduced egg production compared with *Wolbachia*-uninfected mosquitoes, with a strong effect for *wMel* and weak effect for *wAlbB* particularly at 3 weeks. Taking the fecundity and blood meal data together, the loss in egg production in older *Wolbachia* mosquitoes seems to be mostly due to an increase in blood meal size rather than a decrease in fecundity, since the number of eggs laid was not affected by mosquito age. One important limitation of our study is that aging and senescence are continuous variables and our aging observations were

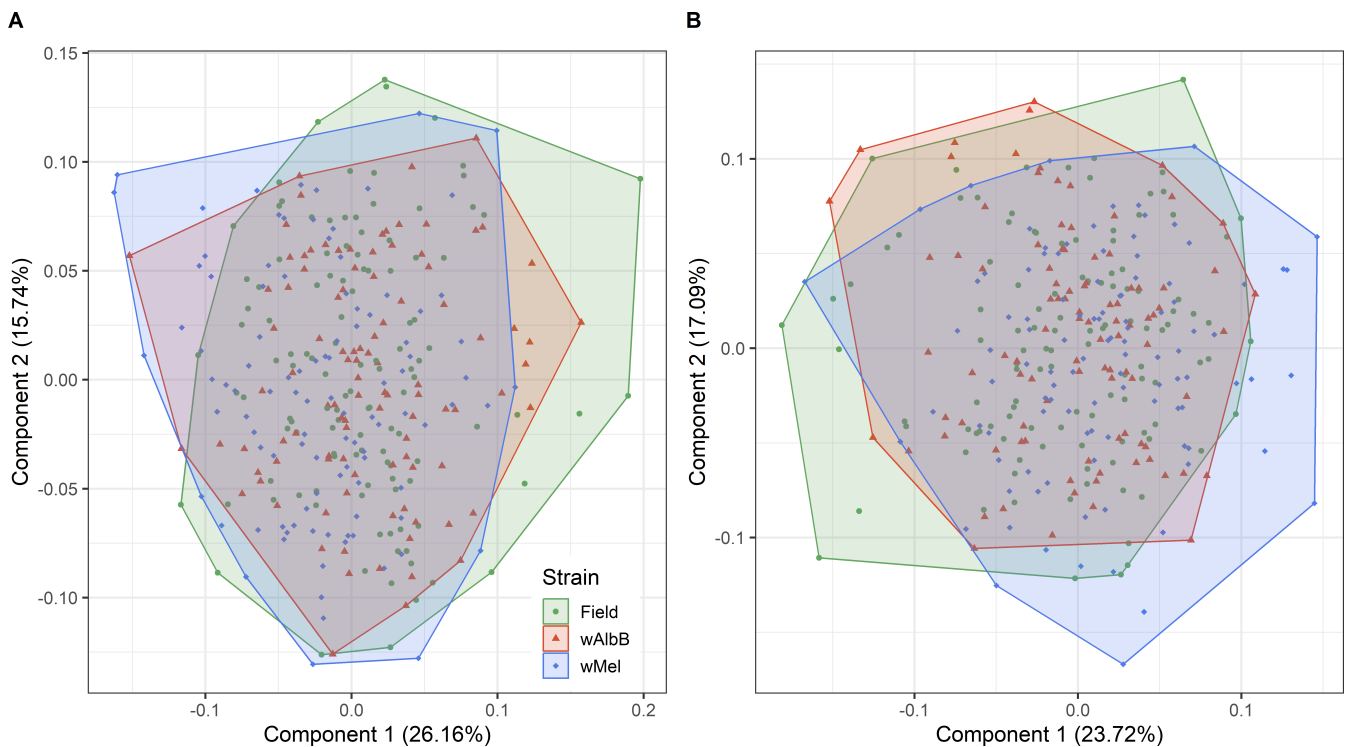
**TABLE 3** Results of the Generalized Linear Model (Gaussian) of the *Wolbachia* density of *Aedes aegypti* females from two different strains (wMel and wAlbB)

Term	Estimate	SE	t-value	P value <sup>a</sup>
Strain (wMel)	-4.5889	2.0129	-2.280	<b>0.0234</b>
Age (3rd)	0.1437	0.0826	1.739	0.0832
Wing length	-1.1810	0.5569	-2.121	<b>0.0349</b>
Blood meal size	-19.471	9.5248	-2.044	<b>0.0419</b>
Strain(wMel)*age (3rd)	-0.6838	0.1161	-5.890	<b>&lt; 0.001</b>
Strain(wMel)*wing	1.3145	0.6765	1.943	0.0531
Strain(wMel)*blood meal size	19.276	11.3378	1.700	0.0903
wing*blood meal size	6.3156	3.0957	2.040	<b>0.0424</b>
Strain(wMel)*wing*blood meal size	-6.1904	3.7341	-1.658	0.0986

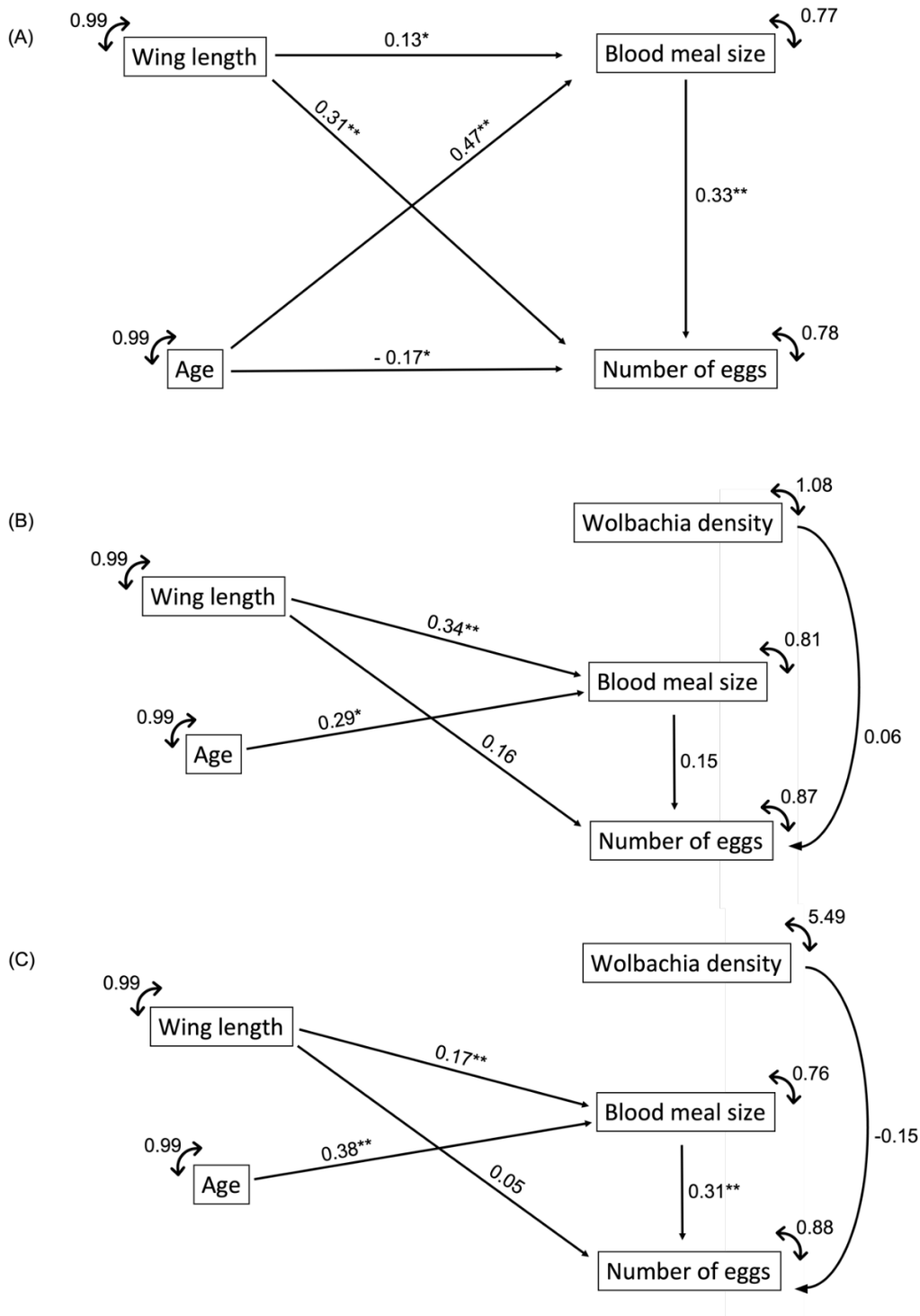
<sup>a</sup>P values under 0.05 are bold.

based on only two points of this continuous distribution, when *Ae. aegypti* females were 7–8 or 21–23 days old. One additional limitation that must be addressed refers to the reduced number of replicates adopted in this experiment. We used eggs derived from two independent cages of each colony. Increasing the number of replicates allows increasing confidence and credibility of the results by reducing the chances of false positives, sampling bias, or measurement error. Thus, our data should be viewed with caution and extrapolations to field must be avoided.

A previous study demonstrated that wing shape can quickly change over just a few generations in *Ae. aegypti*, suggesting microevolutionary adaption (53). Changes in wing shape can be influenced by various environmental and genetic factors (89). For instance, Jaramillo et al. (90) founded that the wing shape of female *Ae. aegypti* was correlated with insecticide resistance levels, which was in turn associated with reduced fecundity and survival. In our study, *Wolbachia* infections had little influence on wing shape variation. In addition, we observed no influence on morphological diversity, i.e.,



**FIG 5** Principal component analysis showing the wing shape variation of the specimens in the left wings (A) and right wings (B). Green points indicate the specimens from the field population. Red triangles indicate the wAlbB-infected population, and blue squares indicate the wMel-infected population.



**FIG 6** Best model path diagrams for (A) *Wolbachia*-uninfected field population, (B) *wAlbB*, and (C) *wMel*. Numbers over the arrows are the path coefficients and their statistical significance is indicated as follows: \* $P < 0.05$  and \*\* $P < 0.01$ .

Procrustes variance within the strains. Thus, the wing shape analyses did not indicate a difference in phenotypic variation due to the *Wolbachia* infection. The extent of *Wolbachia*-mediated virus blocking is heterogeneous (91, 92) and depends on factors such as virus serotype, host genetic background, and rearing conditions and the method of infection. Thus, methodological differences between studies may produce different

**TABLE 4** Model fit of full (initial model) and the simplified best path model determining the number of eggs of *Aedes aegypti* females carrying one of the two *Wolbachia* strains (*wMel* or *wAlbB*) or in the absence of this bacterium<sup>a</sup>

Population	Structural equation model	df	$\chi^2$	CFI	TLI	RMSEA	SRMSR	AIC	$\Delta$ AIC
Field (full = best model)	EGG ~ AGE + WNG + BLD, BLD ~ AGE + WNG, AGE ~ AGE, WNG ~ WNG, BLD ~ BLD, EGG ~ EGG	1	0.143	0.981	0.88	0.093	0.048	1,446.97	-
<i>wMel</i> (full model)	EGG ~ AGE + WNG + BLD + WB, BLD ~ AGE + WNG + WB, WB ~ WNG + BLD, AGE ~ AGE, BLD ~ BLD, EGG ~ EGG, WB ~ WB	1	<0.001	0.877	0.23	0.395	0.144	1,530.97	-
<i>wMel</i> (best model)	EGG ~ WNG + BLD + WB, BLD ~ AGE + WNG, BLD ~ BLD, EGG ~ EGG	2	0.065	0.922	0.726	0.122	0.034	624.57	906.4
<i>wAlbB</i> (full model)	EGG ~ AGE + WNG + BLD + WB, BLD ~ AGE + WNG + WB, WB ~ WNG + BLD, AGE ~ AGE, BLD ~ BLD, EGG ~ EGG, WB ~ WB	1	<0.001	0.669	0.238	0.399	0.112	1,636.52	-
<i>wAlbB</i> (best model)	EGG ~ WNG + BLD + WB, BLD ~ AGE + WNG, BLD ~ BLD, EGG ~ EGG	2	0.494	0.988	0.954	<0.001	0.024	632.06	1,004.46

<sup>a</sup>EGG, number of eggs; AGE, age of mosquito when blood fed; WNG, wing length; BLD, blood meal size; WB, *Wolbachia* density;  $\chi^2$ , chi-square; CFI, Comparative Fit Index; TLI, Tucker-Lewis Index; RMSEA, Root Mean Square Error of Approximation; SRMSR, Standardized Root Mean Square Residual; AIC, Akaike Information Criteria;  $\Delta$ AIC, difference in AIC between the full and best models.

outcomes (27, 55, 93–95). Virus blocking has been positively linked to *Wolbachia* density, with a higher blocking phenotype being verified in specimens with a high density of this bacterium (96). Therefore, a critical trait for the long-term applicability and stability of *Wolbachia* in mitigating arbovirus transmission is its density under natural conditions, especially under fluctuating temperatures (77, 94, 97, 98). Recent data regarding the effects of *Wolbachia* in reducing DENV and CHIKV transmission in Rio de Janeiro revealed a strong seasonal effect on *Wolbachia* introgression in a native population, with a lower frequency of *Wolbachia*-infected mosquitoes during the warmer months (74). However, no information was available for the *Wolbachia* density over the study period. Field data gathered in Cairns, Australia, show the detrimental effects of high temperatures on the stability of *Wolbachia* and its *Ae. aegypti* interaction, affecting maternal transmission, cytoplasmic incompatibility, and likely the potential of *Wolbachia* to mitigate arbovirus transmission (94). Thus, the mosquito-*Wolbachia* density association under a gradient of temperature regimes needs to be carefully investigated for both strains to understand the likely long-term stability of *Wolbachia* as a disease control tool.

Path analysis has been used in ecological studies to describe a myriad of relationships among traits by estimating the reciprocal magnitude of direct and indirect effects (path coefficients) on the response variable (35, 66, 99–101). By combining path analysis and model selection approaches, we explored multiple direct and indirect paths that connect variables involved in blood ingestion and mosquito fecundity for *Ae. aegypti* females transinfected with either *wMel* or *wAlbB* and uninfected individuals. The best model for the *Wolbachia*-uninfected strain was the full model, whereas reduced models presented better fit for both *Wolbachia*-infected strains. The best model selected for each strain, additionally to resulting in a lower AIC, also provided the best fit according to conventional cutoffs for the model fit indices, enhancing our confidence to interpret model parameter estimates (102). Overall, the relationships revealed by the path analysis were in accordance with generalized linear models. The most intriguing conclusion is that the presence of *Wolbachia* promotes a reshaping of trait pathways regardless of the strain. Noteworthy was the fact the blood meal size, wing length, the number of eggs have no effect on the *Wolbachia* density, a trend observable for both the *wMel* and *wAlbB* strains. *Wolbachia* is known to affect the reproductive traits of their hosts (31), leading to several physiological and behavioral changes in mosquito biology. Considering both *wMel* and *wAlbB* strains have been released in several dengue endemic areas of the globe and the well-known fitness costs associated with *Wolbachia* in terms of mosquito fecundity and egg fertility (37, 75), other traits involved in the *Ae. aegypti*-*Wolbachia* interaction could be investigated to better comprehend invasion patterns in endemic settings. For example, it remains unknown to what extension the loss observed in egg fertility and

changes in the direct and indirect pathways between fitness traits as reported here through path diagrams can affect the long-term stability of invasions. Determining a path network that includes the infection with an arbovirus like DENV will add new insights into this symbiotic interaction.

In conclusion, our study provides insights into the effects of *Wolbachia* strains *wMel* and *wAlbB* on various life history traits of *Ae. aegypti* mosquitoes with a controlled genetic background. We observed differential effects on fecundity, blood meal size, and wing shape, which may have implications for the ease with which *Wolbachia* invasion happens in endemic settings (26, 78). For example, a reduction in fecundity of *wMel*-infected *Ae. aegypti* and a lower production of eggs with a set amount of ingested blood relative to uninfected individuals could slow invasion into native populations. Furthermore, due to egg hatching issues, the native *Wolbachia*-free population can produce a larger egg bank in dry months that synchronously hatch when wet summer conditions start, whereas the eggs from *Wolbachia*-infected eggs (particularly those infected by *wAlbB*) can lose their viability a few weeks after being laid in natural breeding sites (103–105). The interaction between *Wolbachia* and *Ae. aegypti* is complex and influenced by multiple factors, including environmental conditions and mosquito age. To enhance the long-term stability of *Wolbachia* as a tool for mitigating arbovirus transmission, further research is needed to explore additional traits and the influence of virus infections on *Wolbachia*-host interactions. Understanding the intricacies of these interactions will undoubtedly aid in the design and implementation of effective strategies for controlling vector-borne diseases.

## ACKNOWLEDGMENTS

We appreciate the efforts of Marcelo Celestino, Mauro Muniz, Unchana Lange, and Anucha Panyiam in providing technical support.

This work was supported by the Deutsche Forschungsgemeinschaft (DFG) (grant number MA 9541/1-1), the Federal Ministry of Education and Research of Germany (BMBF) (grant number NEED 01KI2022), and Fundação Carlos Chagas Filho de Amparo à Pesquisa no Estado do Rio de Janeiro (grant number E-14/2019). The funders had no role in study design, data collection and analysis, decision to publish, or preparation of the manuscript.

## AUTHOR AFFILIATIONS

<sup>1</sup>Bernhard Nocht Institute for Tropical Medicine, Hamburg, Germany

<sup>2</sup>Laboratório de Mosquitos Transmissores de Hematozoários, Instituto Oswaldo Cruz, Fiocruz, Rio de Janeiro, Brazil

<sup>3</sup>Instituto Nacional de Ciência e Tecnologia em Entomologia Médica, Universidade Federal do Rio de Janeiro, Rio de Janeiro, Brazil

<sup>4</sup>Faculty of Mathematics, Informatics and Natural Sciences, University of Hamburg, Hamburg, Germany

<sup>5</sup>Pest and Environmental Adaptation Research Group, School of BioSciences, Bio21 Institute, The University of Melbourne, Melbourne, Australia

## AUTHOR ORCIDs

Rafael Maciel-de-Freitas  <http://orcid.org/0000-0002-2198-6492>

Ary Hoffmann  <http://orcid.org/0000-0001-9497-7645>

## FUNDING

Funder	Grant(s)	Author(s)
Deutsche Forschungsgemeinschaft (DFG)	MA 9541/1-1	Rafael Maciel-de-Freitas



Funder	Grant(s)	Author(s)
Bundesministerium für Bildung und Forschung (BMBF)	NEED 01KI2022	Felix G. Sauer Konstantin Kliemke Renke Lühken
Fundação Carlos Chagas Filho de Amparo à Pesquisa do Estado do Rio de Janeiro (FAPERJ)	E-14/2019	Rafael Maciel-de-Freitas

## AUTHOR CONTRIBUTIONS

Rafael Maciel-de-Freitas, Conceptualization, Formal analysis, Funding acquisition, Investigation, Methodology, Resources, Validation, Writing – original draft, Writing – review and editing | Felix G. Sauer, Conceptualization, Methodology, Writing – original draft, Writing – review and editing | Konstantin Kliemke, Formal analysis, Methodology, Visualization, Writing – original draft, Writing – review and editing | Gabriela A. Garcia, Conceptualization, Methodology, Writing – original draft, Writing – review and editing | Márcio G. Pavan, Conceptualization, Methodology, Writing – original draft, Writing – review and editing | Mariana R. David, Conceptualization, Formal analysis, Methodology, Writing – original draft, Writing – review and editing | Jonas Schmidt-Chanasit, Conceptualization, Funding acquisition, Investigation, Writing – original draft, Writing – review and editing | Ary Hoffmann, Methodology, Resources, Writing – original draft, Writing – review and editing | Renke Lühken, Conceptualization, Formal analysis, Funding acquisition, Writing – original draft, Writing – review and editing

## ADDITIONAL FILES

The following material is available [online](#).

### Supplemental Material

**Supplemental material (Spectrum00128-24-s0001.pdf).** Figures S1 and S2.

## REFERENCES

- Gorton AJ, Heath KD, Pilet-Nayel M-L, Baranger A, Stinchcombe JR. 2012. Mapping the genetic basis of symbiotic variation in legume-rhizobium interactions in *Medicago truncatula*. G3 (Bethesda) 2:1291–1303. <https://doi.org/10.1534/g3.112.003269>
- Lambrechts L, Fellous S, Koella JC. 2006. Coevolutionary interactions between host and parasite genotypes. Trends Parasitol 22:12–16. <https://doi.org/10.1016/j.pt.2005.11.008>
- Schmid-Hempel P, Ebert D. 2003. On the evolutionary ecology of specific immune defence. Trends Ecol Evol 18:27–32. [https://doi.org/10.1016/S0169-5347\(02\)00013-7](https://doi.org/10.1016/S0169-5347(02)00013-7)
- Agrawal A, Lively CM. 2002. Infection genetics: gene-for-gene versus matching-alleles models and all points in between. Evol Ecol Res 4:79–90.
- Hamilton WD, Axelrod R, Tanese R. 1990. Sexual reproduction as an adaptation to resist parasites (a review). Proc Natl Acad Sci U S A 87:3566–3573. <https://doi.org/10.1073/pnas.87.9.3566>
- Brinker P, Fontaine MC, Beukeboom LW, Falcao Salles J. 2019. Host, symbionts, and the microbiome: the missing tripartite interaction. Trends Microbiol 27:480–488. <https://doi.org/10.1016/j.tim.2019.02.002>
- Bose J, Schulte RD. 2014. Testing GxG interactions between coinfecting microbial parasite genotypes within hosts. Front Genet 5:124. <https://doi.org/10.3389/fgene.2014.00124>
- Holmes EC, Burch SS. 2000. The causes and consequences of genetic variation in dengue virus. Trends Microbiol 8:74–77. [https://doi.org/10.1016/S0966-842x\(99\)01669-8](https://doi.org/10.1016/S0966-842x(99)01669-8)
- Rico-Hesse R. 2003. Microevolution and virulence of dengue viruses, p 315–341. In *Advances in virus research*
- Bhatt S, Gething PW, Brady OJ, Messina JP, Farlow AW, Moyes CL, Drake JM, Brownstein JS, Hoen AG, Sankoh O, Myers MF, George DB, Jaenisch T, Wint GRW, Simmons CP, Scott TW, Farrar JJ, Hay SI. 2013. The global distribution and burden of dengue. Nature 496:504–507. <https://doi.org/10.1038/nature12060>
- Barreto ML, Barral-Netto M, Stabeli R, Almeida-Filho N, Vasconcelos PFC, Teixeira M, Buss P, Gadelha PE. 2016. Zika virus and microcephaly in Brazil: a scientific agenda. Lancet 387:919–921. [https://doi.org/10.1016/S0140-6736\(16\)00545-6](https://doi.org/10.1016/S0140-6736(16)00545-6)
- Rezza G, Nicoletti L, Angelini R, Romi R, Finarelli AC, Panning M, Cordioli P, Fortuna C, Boros S, Magurano F, Silvi G, Angelini P, Dottori M, Ciufolini MG, Majori GC, Cassone A, CHIKV study group. 2007. Infection with chikungunya virus in Italy: an outbreak in a temperate region. Lancet 370:1840–1846. [https://doi.org/10.1016/S0140-6736\(07\)61779-6](https://doi.org/10.1016/S0140-6736(07)61779-6)
- Nunes MRT, Faria NR, de Vasconcelos JM, Golding N, Kraemer MUG, de Oliveira LF, Azevedo R do S da S, da Silva DEA, da Silva EVP, da Silva SP, Carvalho VL, Coelho GE, Cruz ACR, Rodrigues SG, Vianez J da S, Nunes BT, Cardoso JF, Tesh RB, Hay SI, Pybus OG, Vasconcelos P da C. 2015. Emergence and potential for spread of chikungunya virus in Brazil. BMC Med 13:102. <https://doi.org/10.1186/s12916-015-0348-x>
- Focks DA, Brenner RJ, Hayes J, Daniels E. 2000. Transmission thresholds for dengue in terms of *Aedes aegypti* pupae per person with discussion of their utility in source reduction efforts. Am J Trop Med Hyg 62:11–18.
- Maciel-de-Freitas R, Avendanho FC, Santos R, Sylvestre G, Araújo SC, Lima JBP, Martins AJ, Coelho GE, Valle D. 2014. Undesirable consequences of insecticide resistance following *Aedes aegypti* control activities due to a dengue outbreak. PLoS One 9:e92424. <https://doi.org/10.1371/journal.pone.0092424>
- Garcia G de A, David MR, Martins A de J, Maciel-de-Freitas R, Lins JGB, Araújo SC, Lima JBP, Valle D. 2018. The impact of insecticide applications on the dynamics of resistance: the case of four *Aedes aegypti* populations from different Brazilian regions. PLoS Negl Trop Dis 12:e0006227. <https://doi.org/10.1371/journal.pntd.0006227>

17. Moyes CL, Vontas J, Martins AJ, Ng LC, Koou SY, Dusfour I, Raghavendra K, Pinto J, Corbel V, David J-P, Weetman D. 2017. Contemporary status of insecticide resistance in the major *Aedes* vectors of arboviruses infecting humans. *PLoS Negl Trop Dis* 11:e0005625. <https://doi.org/10.1371/journal.pntd.0005625>
18. Zug R, Hammerstein P. 2012. Still a host of hosts for *Wolbachia*: analysis of recent data suggests that 40% of terrestrial Arthropod species are infected. *PLoS One* 7:e38544. <https://doi.org/10.1371/journal.pone.0038544>
19. McMeniman CJ, Lane RV, Cass BN, Fong AWC, Sidhu M, Wang Y-F, O'Neill SL. 2009. Stable introduction of a life-shortening *Wolbachia* infection into the mosquito *Aedes aegypti*. *Science* 323:141–144. <https://doi.org/10.1126/science.1165326>
20. Dutra HLC, Rocha MN, Dias FBS, Mansur SB, Caragata EP, Moreira LA. 2016. *Wolbachia* blocks currently circulating Zika virus isolates in Brazilian *Aedes aegypti* mosquitoes. *Cell Host Microbe* 19:771–774. <https://doi.org/10.1016/j.chom.2016.04.021>
21. Moreira LA, Iturbe-Ormaetxe I, Jeffery JA, Lu G, Pyke AT, Hedges LM, Rocha BC, Hall-Mendelin S, Day A, Riegler M, Hugo LE, Johnson KN, Kay BH, McGraw EA, van den Hurk AF, Ryan PA, O'Neill SL. 2009. A *Wolbachia* symbiont in *Aedes aegypti* limits infection with dengue, chikungunya, and *Plasmodium*. *Cell* 139:1268–1278. <https://doi.org/10.1016/j.cell.2009.11.042>
22. Aliota MT, Walker EC, Uribe Yepes A, Velez ID, Christensen BM, Osorio JE. 2016. The wMel strain of *Wolbachia* reduces transmission of chikungunya virus in *Aedes aegypti*. *PLoS Negl Trop Dis* 10:e0004677. <https://doi.org/10.1371/journal.pntd.0004677>
23. Turelli M. 1994. Evolution of incompatibility-inducing microbes and their hosts. *Evolution* 48:1500. <https://doi.org/10.2307/2410244>
24. Ross PA, Turelli M, Hoffmann AA. 2019. Evolutionary ecology of *Wolbachia* releases for disease control. *Annu Rev Genet* 53:93–116. <https://doi.org/10.1146/annurev-genet-112618-043609>
25. Ferguson NM, Kien DTH, Clapham H, Aguas R, Trung VT, Chau TNB, Popovici J, Ryan PA, O'Neill SL, McGraw EA, Long VT, Dui LT, Nguyen HL, Chau NVV, Wills B, Simmons CP. 2015. Modeling the impact on virus transmission of *Wolbachia*-mediated blocking of dengue virus infection of *Aedes aegypti*. *Sci Transl Med* 7:279ra37. <https://doi.org/10.1126/scitranslmed.3010370>
26. Garcia G de A, Sylvestre G, Aguiar R, da Costa GB, Martins AJ, Lima JBP, Petersen MT, Lourenço-de-Oliveira R, Shadbolt MF, Rašić G, Hoffmann AA, Villela DAM, Dias FBS, Dong Y, O'Neill SL, Moreira LA, Maciel-de-Freitas R. 2019. Matching the genetics of released and local *Aedes aegypti* populations is critical to assure *Wolbachia* invasion. *PLoS Negl Trop Dis* 13:e0007023. <https://doi.org/10.1371/journal.pntd.0007023>
27. King JG, Souto-Maior C, Sartori LM, Maciel-de-Freitas R, Gomes MGM. 2018. Variation in *Wolbachia* effects on *Aedes* mosquitoes as a determinant of invasiveness and vectorial capacity. *Nat Commun* 9:1483. <https://doi.org/10.1038/s41467-018-03981-8>
28. Nazni WA, Hoffmann AA, NoorAfizah A, Cheong YL, Mancini MV, Golding N, Kamarul GMR, Arif MAK, Thohir H, NurSyamimi H, et al. 2019. Establishment of *Wolbachia* strain wAlbB in Malaysian populations of *Aedes aegypti* for dengue control. *Curr Biol* 29:4241–4248. <https://doi.org/10.1016/j.cub.2019.11.007>
29. O'Neill SL, Ryan PA, Turley AP, Wilson G, Retzki K, Iturbe-Ormaetxe I, Dong Y, Kenny N, Paton CJ, Ritchie SA, Brown-Kenyon J, Stanford D, Wittmeier N, Anders KL, Simmons CP. 2018. Scaled deployment of *Wolbachia* to protect the community from dengue and other *Aedes* transmitted arboviruses. *Gates Open Res* 2:36. <https://doi.org/10.12688/gatesopenres.12844.2>
30. Utarini A, Indriani C, Ahmad RA, Tantowijoyo W, Arguni E, Ansari MR, Supriyati E, Wardana DS, Meitika Y, Ernesia I, Nurhayati I, Prabowo E, Andari B, Green BR, Hodgson L, Cutcher Z, Rancés E, Ryan PA, O'Neill SL, Dufault SM, Tanamas SK, Jewell NP, Anders KL, Simmons CP. 2021. Efficacy of *Wolbachia*-infected mosquito deployments for the control of dengue. *N Engl J Med* 384:2177–2186. <https://doi.org/10.1056/NEJMoa2030243>
31. Werren JH, Baldo L, Clark ME. 2008. *Wolbachia*: master manipulators of invertebrate biology. *Nat Rev Microbiol* 6:741–751. <https://doi.org/10.1038/nrmicro1969>
32. Ramos LFC, Martins M, Murillo JR, Domont GB, de Oliveira DMP, Nogueira FCS, Maciel-de-Freitas R, Junqueira M. 2022. Interspecies isobaric labeling-based quantitative proteomics reveals protein changes in the ovary of *Aedes aegypti* coinfecting with ZIKV and *Wolbachia*. *Front Cell Infect Microbiol* 12:1–16. <https://doi.org/10.3389/fcimb.2022.900608>
33. Martins M, Ramos LFC, Murillo JR, Torres A, de Carvalho SS, Domont GB, de Oliveira DMP, Mesquita RD, Nogueira FCS, Maciel-de-Freitas R, Junqueira M. 2021. Comprehensive quantitative proteome analysis of *Aedes aegypti* identifies proteins and pathways involved in *Wolbachia pipientis* and Zika virus interference phenomenon. *Front Physiol* 12:1–19. <https://doi.org/10.3389/fphys.2021.642237>
34. Ross PA, Hoffmann AA. 2022. Fitness costs of *Wolbachia* shift in locally adapted *Aedes aegypti* mosquitoes. *Environ Microbiol* 24:5749–5759. <https://doi.org/10.1111/1462-2920.16235>
35. Frankino WA, Juliano SA. 1999. Costs of reproduction and geographic variation in the reproductive tactics of the mosquito *Aedes triseriatus*. *Oecologia* 120:59–68. <https://doi.org/10.1007/s004420050833>
36. Schwartz A, Koella JC. 2001. Trade-offs, conflicts of interest and manipulation in *Plasmodium*–mosquito interactions. *Trends Parasitol* 17:189–194. [https://doi.org/10.1016/s1471-4922\(00\)01945-0](https://doi.org/10.1016/s1471-4922(00)01945-0)
37. Petersen MT, Couto-Lima D, Garcia GA, Pavan MG, David MR, Maciel-de-Freitas R. 2023. Dengue exposure and *Wolbachia* wMel strain affects the fertility of quiescent eggs of *Aedes aegypti*. *Viruses* 15:952. <https://doi.org/10.3390/v15040952>
38. David MR, Garcia GA, Valle D, Maciel-de-Freitas R. 2018. Insecticide resistance and fitness: the case of four *Aedes aegypti* populations from different Brazilian regions. *Biomed Res Int* 2018:6257860. <https://doi.org/10.1155/2018/6257860>
39. Pavan MG, Garcia GA, David MR, Maciel-de-Freitas R. 2023. The double-edged sword effect of expanding *Wolbachia* deployment in Dengue endemic settings. *Lancet Reg Health - Am* 27:100610. <https://doi.org/10.1016/j.lana.2023.100610>
40. Brito LP, Carrara L, de Freitas RM, Lima JBP, Martins AJ. 2018. Levels of resistance to pyrethroid among distinct *kdr* alleles in *Aedes aegypti* laboratory lines and frequency of *kdr* alleles in 27 natural populations from Rio de Janeiro, Brazil. *Biomed Res Int* 2018:2410819. <https://doi.org/10.1155/2018/2410819>
41. Maciel-de-Freitas R. 2023. Listen to the shopkeeper. *Elife* 12:10–12. <https://doi.org/10.7554/eLife.87366>
42. Gesto JSM, Pinto SB, Dias FBS, Peixoto J, Costa G, Kutcher S, Montgomery J, Green BR, Anders KL, Ryan PA, Simmons CP, O'Neill SL, Moreira LA. 2021. Large-scale deployment and establishment of *Wolbachia* into the *Aedes aegypti* population in Rio de Janeiro, Brazil. *Front Microbiol* 12:711107. <https://doi.org/10.3389/fmicb.2021.711107>
43. Walker T, Johnson PH, Moreira LA, Iturbe-Ormaetxe I, Frentiu FD, McMeniman CJ, Leong YS, Dong Y, Axford J, Kriesner P, Lloyd AL, Ritchie SA, O'Neill SL, Hoffmann AA. 2011. The wMel *Wolbachia* strain blocks dengue and invades caged *Aedes aegypti* populations. *Nature* 476:450–453. <https://doi.org/10.1038/nature10355>
44. Ross PA, Gu X, Robinson KL, Yang Q, Cottingham E, Zhang Y, Yeap HL, Xu X, Endersby-Harshman NM, Hoffmann AA. 2021. A wAlbB *Wolbachia* transinfection displays stable phenotypic effects across divergent *Aedes aegypti* mosquito backgrounds. *Appl Environ Microbiol* 87:e0126421. <https://doi.org/10.1128/AEM.01264-21>
45. Benkova I, Volf P. 2007. Effect of temperature on metabolism of *Phlebotomus papatasi* (Diptera: Phlebotomidae). *J Med Entomol* 44:150–154. <https://doi.org/10.1093/jmedent/41.5.150>
46. Petersen MT, Silveira ID da, Tátilla-Ferreira A, David MR, Chouin-Carneiro T, Van den Wouwer L, Maes L, Maciel-de-Freitas R. 2018. The impact of the age of first blood meal and Zika virus infection on *Aedes aegypti* egg production and longevity. *PLoS One* 13:e0200766. <https://doi.org/10.1371/journal.pone.0200766>
47. Hauser G, Thiévent K, Koella JC. 2019. The ability of *Anopheles gambiae* mosquitoes to bite through a permethrin-treated net and the consequences for their fitness. *Sci Rep* 9:8141. <https://doi.org/10.1038/s41598-019-44679-1>
48. Briegel H. 1980. Determination of uric acid and hematin in a single sample of excreta from blood-fed insects. *Experientia* 36:1428–1428. <https://doi.org/10.1007/BF01960142>
49. Schindelin J, Arganda-Carreras I, Frise E, Kaynig V, Longair M, Pietzsch T, Preibisch S, Rueden C, Saalfeld S, Schmid B, Tinevez J-Y, White DJ,

- Hartenstein V, Eliceiri K, Tomancak P, Cardona A. 2012. Fiji: an open-source platform for biological-image analysis. *Nat Methods* 9:676–682. <https://doi.org/10.1038/nmeth.2019>
50. Schneider CA, Rasband WS, Eliceiri KW. 2012. NIH Image to ImageJ: 25 years of image analysis. *Nat Methods* 9:671–675. <https://doi.org/10.1038/nmeth.2089>
  51. Wilke ABB, Christe R de O, Multini LC, Vidal PO, Wilk-da-Silva R, de Carvalho GC, Marrelli MT. 2016. Morphometric wing characters as a tool for mosquito identification. *PLoS ONE* 11:e0161643. <https://doi.org/10.1371/journal.pone.0161643>
  52. Sauer FG, Jaworski L, Erdbeer L, Heitmann A, Schmidt-Chanasit J, Kiel E, Lühken R. 2020. Geometric morphometric wing analysis represents a robust tool to identify female mosquitoes (Diptera: Culicidae) in Germany. *Sci Rep* 10:17613. <https://doi.org/10.1038/s41598-020-72873-z>
  53. Louise C, Vidal PO, Suesdek L. 2015. Microevolution of *Aedes aegypti*. *PLoS One* 10:e0137851. <https://doi.org/10.1371/journal.pone.0137851>
  54. Harbach RE, Knight KL. 1980. Taxonomist's glossary of mosquito anatomy, p 1–54. Plexus Publications Co.
  55. Souto-Maior C, Sylvestre G, Braga Stehling Dias F, Gomes MGM, Maciel-de-Freitas R. 2018. Model-based inference from multiple dose, time course data reveals *Wolbachia* effects on infection profiles of type 1 dengue virus in *Aedes aegypti*. *PLoS Negl Trop Dis* 12:e0006339. <https://doi.org/10.1371/journal.pntd.0006339>
  56. Lee SF, White VL, Weeks AR, Hoffmann AA, Endersby NM. 2012. High-throughput PCR assays to monitor *Wolbachia* infection in the dengue mosquito (*Aedes aegypti*) and *Drosophila simulans*. *Appl Environ Microbiol* 78:4740–4743. <https://doi.org/10.1128/AEM.00069-12>
  57. de Oliveira S, Villela DAM, Dias FBS, Moreira LA, Maciel de Freitas R. 2017. How does competition among wild type mosquitoes influence the performance of *Aedes aegypti* and dissemination of *Wolbachia pipientis*? *PLoS Negl Trop Dis* 11:e0005947. <https://doi.org/10.1371/journal.pntd.0005947>
  58. Reis R, Oliveira M de, Borges GRA. 2015. R tools for biologists (RT4Bio)
  59. Delignette-Muller ML, Dutang C. 2015. fitdistrplus: an R package for fitting distributions. *J Stat Softw* 64:1–34. <https://doi.org/10.18637/jss.v064.i04>
  60. Meyer D, Zeileis A, Hornik K. 2020. vcd: visualizing categorical data
  61. Burnham KP, Anderson DR, Huyvaert KP. 2011. AIC model selection and multimodel inference in behavioral ecology: some background, observations, and comparisons. *Behav Ecol Sociobiol* 65:23–35. <https://doi.org/10.1007/s00265-010-1029-6>
  62. Burnham KP, Anderson DR. 2015. Model selection and multimodel inference: a practical information-theoretic approach. 2nd ed. Springer, New York.
  63. Hartig F. 2002. DHARMA: residual diagnostics for hierarchical (multi-level / mixed) regression models
  64. R Development Core Team. 2020. R: a language and environment for statistical computing. R Foundation for Statistical Computing.
  65. Mitchell RJ. 2020. Path analysis: pollination, p 445. In *Design and analysis of ecological experiments*. Chapman and Hall/CRC.
  66. Carbone LM, Aguilar R. 2021. Abiotic and biotic interactions as drivers of plant reproduction in response to fire frequency. *Arthropod Plant Interact* 15:83–94. <https://doi.org/10.1007/s11829-020-09792-3>
  67. Revelle W. 2023. psych: procedures for psychological, psychometric, and personality research
  68. Rosseel Y. 2012. lavaan: an R package for structural equation modeling. *J Stat Softw* 48:1–36. <https://doi.org/10.18637/jss.v048.i02>
  69. Adams D, Collyer M, Kaliontzopoulou A, Baken E. 2023. Geometric morphometric analyses of 2D and 3D landmark data
  70. Lorenz C, Almeida F, Almeida-Lopes F, Louise C, Pereira SN, Petersen V, Vidal PO, Virginio F, Suesdek L. 2017. Geometric morphometrics in mosquitoes: what has been measured? *Infect Genet Evol* 54:205–215. <https://doi.org/10.1016/j.meegid.2017.06.029>
  71. Garcia GA, Hoffmann AA, Maciel-de-Freitas R, Villela DAM. 2020. *Aedes aegypti* insecticide resistance underlies the success (and failure) of *Wolbachia* population replacement. *Sci Rep* 10:63. <https://doi.org/10.1038/s41598-019-56766-4>
  72. Ryan PA, Turley AP, Wilson G, Hurst TP, Retzki K, Brown-Kenyon J, Hodgson L, Kenny N, Cook H, Montgomery BL, Paton CJ, Ritchie SA, Hoffmann AA, Jewell NP, Tanamas SK, Anders KL, Simmons CP, O'Neill SL. 2019. Establishment of *WMel Wolbachia* in *Aedes aegypti* mosquitoes and reduction of local dengue transmission in Cairns and surrounding locations in northern Queensland, Australia. *Gates Open Res* 3:1547. <https://doi.org/10.12688/gatesopenres.13061.2>
  73. Nguyen TH, Nguyen HL, Nguyen TY, Vu SN, Tran ND, Le TN, Vien QM, Bui TC, Le HT, Kutcher S, et al. 2015. Field evaluation of the establishment potential of *wmel* *Wolbachia* in Australia and Vietnam for dengue control. *Parasit Vectors* 8:563. <https://doi.org/10.1186/s13071-015-1174-x>
  74. Ribeiro Dos Santos G, Durovni B, Saraceni V, Souza Riback TI, Pinto SB, Anders KL, Moreira LA, Salje H. 2022. Estimating the effect of the *wMel* release programme on the incidence of dengue and chikungunya in Rio de Janeiro: a spatiotemporal modelling study. *Lancet Infect Dis* 22:1587–1595. [https://doi.org/10.1016/S1473-3099\(22\)00436-4](https://doi.org/10.1016/S1473-3099(22)00436-4)
  75. Lau M-J, Ross PA, Hoffmann AA. 2021. Infertility and fecundity loss of *Wolbachia*-infected *Aedes aegypti* hatched from quiescent eggs is expected to alter invasion dynamics. *PLoS Negl Trop Dis* 15:e0009179. <https://doi.org/10.1371/journal.pntd.0009179>
  76. Dutra HLC, Lopes da Silva V, da Rocha Fernandes M, Logullo C, Maciel-de-Freitas R, Moreira LA. 2016. The influence of larval competition on Brazilian *Wolbachia*-infected *Aedes aegypti* mosquitoes. *Parasit Vectors* 9:282. <https://doi.org/10.1186/s13071-016-1559-5>
  77. Foo I-H, Hoffmann AA, Ross PA. 2019. Cross-generational effects of heat stress on fitness and *Wolbachia* density in *Aedes aegypti* mosquitoes. *Trop Med Infect Dis* 4:13. <https://doi.org/10.3390/tropicalmed4010013>
  78. Ross PA, Elfekih S, Collier S, Klein MJ, Lee SS, Dunn M, Jackson S, Zhang Y, Axford JK, Gu X, Home JL, Nassar MS, Paradkar PN, Tawfik EA, Jiggins FM, Almalik AM, Al-Fageeh MB, Hoffmann AA. 2023. Developing *Wolbachia*-based disease interventions for an extreme environment. *PLoS Pathog* 19:e1011117. <https://doi.org/10.1371/journal.ppat.1011117>
  79. Maciel-de-Freitas R, Aguiar R, Bruno RV, Guimarães MC, Lourenço-de-Oliveira R, Sorgine MHF, Struchiner CJ, Valle D, O'Neill SL, Moreira LA. 2012. Why do we need alternative tools to control mosquito-borne diseases in Latin America? *Mem Inst Oswaldo Cruz* 107:828–829. <https://doi.org/10.1590/s0074-02762012000600021>
  80. Axford JK, Ross PA, Yeap HL, Callahan AG, Hoffmann AA. 2016. Fitness of *wAlbB Wolbachia* infection in *Aedes aegypti*: parameter estimates in an outcrossed background and potential for population invasion. *Am J Trop Med Hyg* 94:507–516. <https://doi.org/10.4269/ajtmh.15-0608>
  81. Fraser JE, De Bruyne JT, Iturbe-Ormaetxe I, Stepnell J, Burns RL, Flores HA, O'Neill SL. 2017. Novel *Wolbachia*-transinfected *Aedes aegypti* mosquitoes possess diverse fitness and vector competence phenotypes. *PLoS Pathog* 13:e1006751. <https://doi.org/10.1371/journal.ppat.1006751>
  82. Javed N, Bhatti A, Paradkar PN. 2021. Advances in understanding vector behavioural traits after infection. *Pathogens* 10:1376. <https://doi.org/10.3390/pathogens10111376>
  83. da Silveira ID, Petersen MT, Sylvestre G, Garcia GA, David MR, Pavan MG, Maciel-de-Freitas R. 2018. Zika virus infection produces a reduction on *Aedes aegypti* lifespan but no effects on mosquito fecundity and oviposition success. *Front Microbiol* 9:3011. <https://doi.org/10.3389/fmicb.2018.03011>
  84. Maciel-de-Freitas R, Koella JC, Lourenço-de-Oliveira R. 2011. Lower survival rate, longevity and fecundity of *Aedes aegypti* (Diptera: Culicidae) females orally challenged with dengue virus serotype 2. *Trans R Soc Trop Med Hyg* 105:452–458. <https://doi.org/10.1016/j.trstmh.2011.05.006>
  85. Isoe J, Collins J, Badgandi H, Day WA, Miesfeld RL. 2011. Defects in coatamer protein I (COPI) transport cause blood feeding-induced mortality in yellow fever mosquitoes. *Proc Natl Acad Sci U S A* 108:E211–E217. <https://doi.org/10.1073/pnas.1102637108>
  86. Day JF, Edman JD, Scott TW. 1994. Reproductive fitness and survivorship of *Aedes aegypti* (Diptera: Culicidae) maintained on blood, with field observations from Thailand. *J Med Entomol* 31:611–617. <https://doi.org/10.1093/jmedent/31.4.611>
  87. Oliver SV, Brooke BD. 2014. The effect of multiple blood-feeding on the longevity and insecticide resistant phenotype in the major malaria vector *Anopheles arabiensis* (Diptera: Culicidae). *Parasit Vectors* 7:390. <https://doi.org/10.1186/1756-3305-7-390>

88. Turley AP, Moreira LA, O'Neill SL, McGraw EA. 2009. *Wolbachia* infection reduces blood-feeding success in the dengue fever mosquito, *Aedes aegypti*. *PLoS Negl Trop Dis* 3:e516. <https://doi.org/10.1371/journal.pntd.0000516>
89. Dujardin J-P. 2008. Morphometrics applied to medical entomology. *Infect Genet Evol* 8:875–890. <https://doi.org/10.1016/j.meegid.2008.07.011>
90. Jaramillo-O N, Fonseca-González I, Chaverra-Rodríguez D. 2014. Geometric morphometrics of nine field isolates of *Aedes aegypti* with different resistance levels to lambda-cyhalothrin and relative fitness of one artificially selected for resistance. *PLoS One* 9:e96379. <https://doi.org/10.1371/journal.pone.0096379>
91. Carrington LB, Tran BCN, Le NTH, Luong TTH, Nguyen TT, Nguyen PT, Nguyen CVV, Nguyen HTC, Vu TT, Vo LT, Le DT, Vu NT, Nguyen GT, Luu HQ, Dang AD, Hurst TP, O'Neill SL, Tran VT, Kien DTH, Nguyen NM, Wolbers M, Wills B, Simmons CP. 2018. Field- and clinically derived estimates of *Wolbachia*-mediated blocking of dengue virus transmission potential in *Aedes aegypti* mosquitoes. *Proc Natl Acad Sci U S A* 115:361–366. <https://doi.org/10.1073/pnas.1715788115>
92. Caragata EP, Rocha MN, Pereira TN, Mansur SB, Dutra HLC, Moreira LA. 2019. Pathogen blocking in *Wolbachia*-infected *Aedes aegypti* is not affected by Zika and dengue virus co-infection. *PLoS Negl Trop Dis* 13:e0007443. <https://doi.org/10.1371/journal.pntd.0007443>
93. Wilson AJ, Harrup LE. 2018. Reproducibility and relevance in insect-arthovirus infection studies. *Curr Opin Insect Sci* 28:105–112. <https://doi.org/10.1016/j.cois.2018.05.007>
94. Ross PA, Ritchie SA, Axford JK, Hoffmann AA. 2019. Loss of cytoplasmic incompatibility in *Wolbachia*-infected *Aedes aegypti* under field conditions. *PLoS Negl Trop Dis* 13:e0007357. <https://doi.org/10.1371/journal.pntd.0007357>
95. Dodson BL, Andrews ES, Turell MJ, Rasgon JL. 2017. *Wolbachia* effects on rift valley fever virus infection in *Culex tarsalis* mosquitoes. *PLoS Negl Trop Dis* 11:e0006050. <https://doi.org/10.1371/journal.pntd.0006050>
96. Martinez J, Longdon B, Bauer S, Chan Y-S, Miller WJ, Bourtzis K, Teixeira L, Jiggins FM. 2014. Symbionts commonly provide broad spectrum resistance to viruses in insects: a comparative analysis of *Wolbachia* strains. *PLoS Pathog* 10:e1004369. <https://doi.org/10.1371/journal.ppat.1004369>
97. Ulrich JN, Beier JC, Devine GJ, Hugo LE. 2016. Heat sensitivity of wMel *Wolbachia* during *Aedes aegypti* development. *PLoS Negl Trop Dis* 10:e0004873. <https://doi.org/10.1371/journal.pntd.0004873>
98. Ross PA, Wiwatanaratnabutr I, Axford JK, White VL, Endersby-Harshman NM, Hoffmann AA. 2017. *Wolbachia* infections in *Aedes aegypti* differ markedly in their response to cyclical heat stress. *PLoS Pathog* 13:e1006006. <https://doi.org/10.1371/journal.ppat.1006006>
99. Feriche M, Reguera S, Santos X, Mociño-Deloya E, Setser K, Pleguezuelos JM. 2016. Female reproduction in *Thamnophis scaliger*: the significance of parturition timing. *J Herpetol* 50:209–215. <https://doi.org/10.1670/15-005>
100. Cohen C, Einav M, Hawlena H. 2015. Path analyses of cross-sectional and longitudinal data suggest that variability in natural communities of blood-associated parasites is derived from host characteristics and not interspecific interactions. *Parasit Vectors* 8:429. <https://doi.org/10.1186/s13071-015-1029-5>
101. Messika I, Garrido M, Kedem H, China V, Gavish Y, Dong Q, Fuqua C, Clay K, Hawlena H. 2017. From endosymbionts to host communities: factors determining the reproductive success of arthropod vectors. *Oecologia* 184:859–871. <https://doi.org/10.1007/s00442-017-3906-4>
102. Beaujean AA. 2014. Latent variable modeling using R. Routledge. <https://www.taylorfrancis.com/books/9781317970736>.
103. Maciel-de-Freitas R, Marques WA, Peres RC, Cunha SP, de Oliveira RL. 2007. Variation in *Aedes aegypti*(Diptera: Culicidae) container productivity in a slum and a suburban district of Rio de Janeiro during dry and wet seasons. *Mem Inst Oswaldo Cruz* 102:489–496. <https://doi.org/10.1590/s0074-02762007005000056>
104. Carbajo AE, Cardo MV, Guimarey PC, Lizuain AA, Buyayisqui MP, Varela T, Utgés ME, Giovacchini CM, Santini MS. 2018. Is autumn the key for dengue epidemics in non endemic regions? The case of Argentina. *PeerJ* 6:e5196. <https://doi.org/10.7717/peerj.5196>
105. Ritchie SA, Townsend M, Paton CJ, Callahan AG, Hoffmann AA. 2015. Application of wMelPop *Wolbachia* strain to crash local populations of *Aedes aegypti*. *PLoS Negl Trop Dis* 9:e0003930. <https://doi.org/10.1371/journal.pntd.0003930>