



Author Correction: Individualized interactomes for network-based precision medicine in hypertrophic cardiomyopathy with implications for other clinical pathophenotypes

Correction to: *Nature Communications*
<https://doi.org/10.1038/s41467-021-21146-y>,
 published online 08 February 2021

<https://doi.org/10.1038/s41467-024-45814-x>

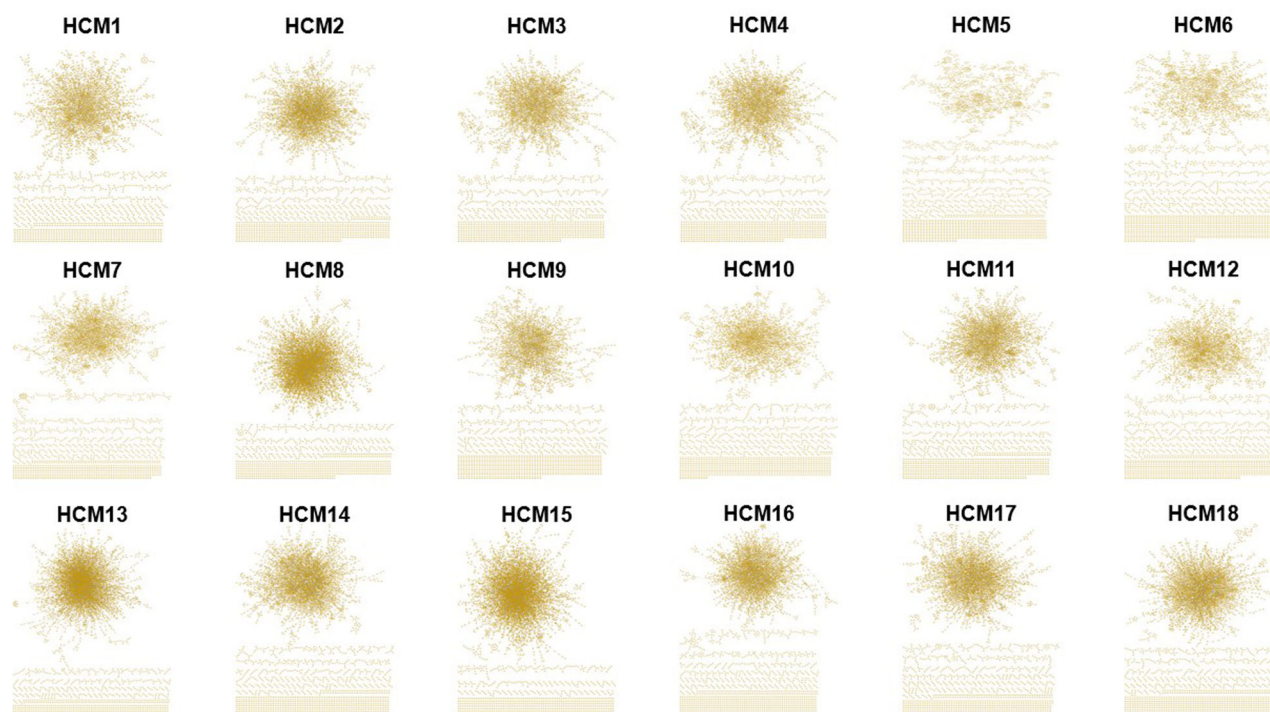
Published online: 08 April 2024



Bradley A. Maron , Rui-Sheng Wang, Sergei Shevtsov, Stavros G. Drakos, Elena Arons, Omar Wever-Pinzon, Gordon S. Huggins, Andriy O. Samokhin, William M. Oldham , Yasmine Aguib , Magdi H. Yacoub, Ethan J. Rowin, Barry J. Maron, Martin S. Maron & Joseph Loscalzo

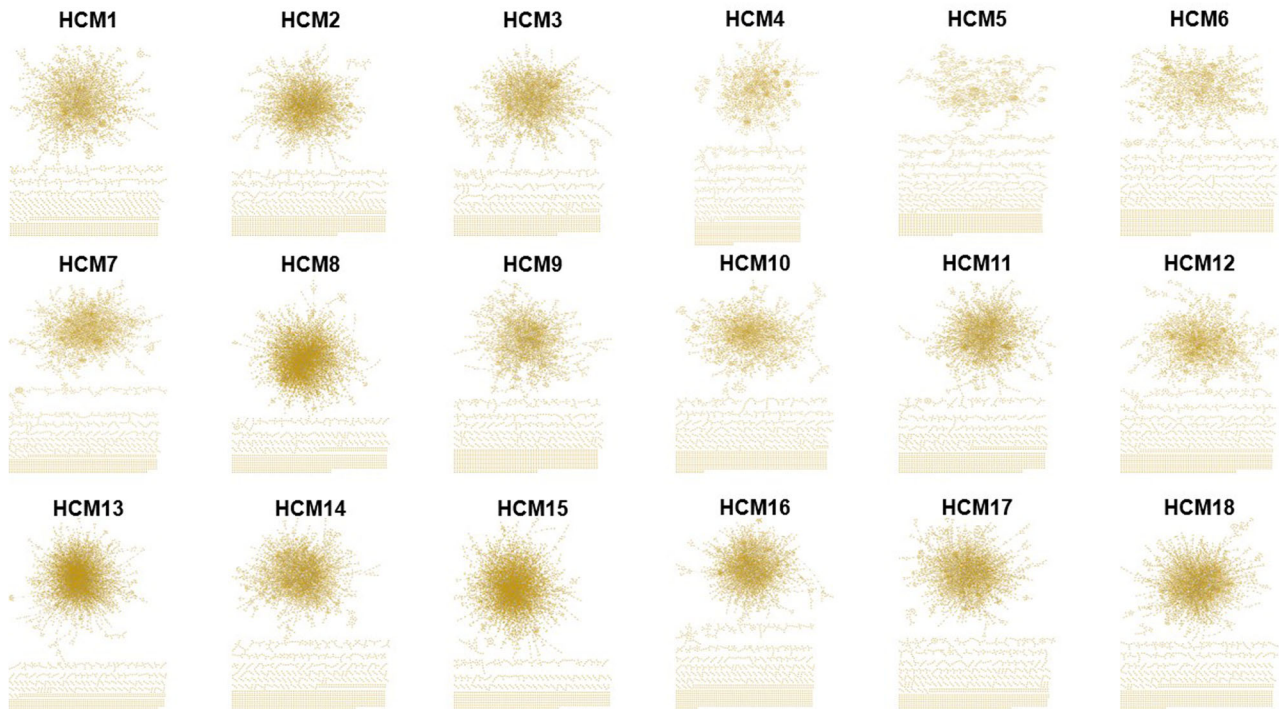
The original version of this Article contained errors in Figure 2 and Figure 3. In figure 2, the network for HCM patient 4 was erroneously duplicated from HCM patient 3.

The incorrect version of Figure 2 is:



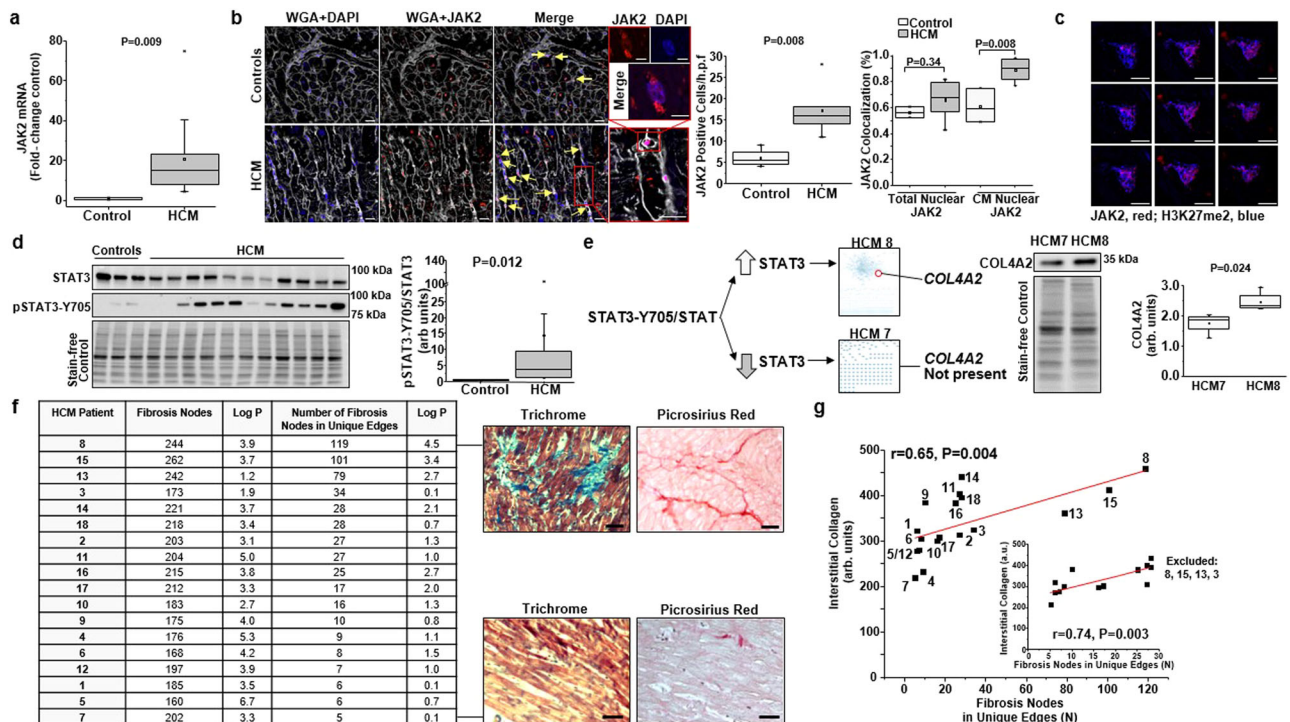
Corrections & amendments

The correct version of Figure 2 is:

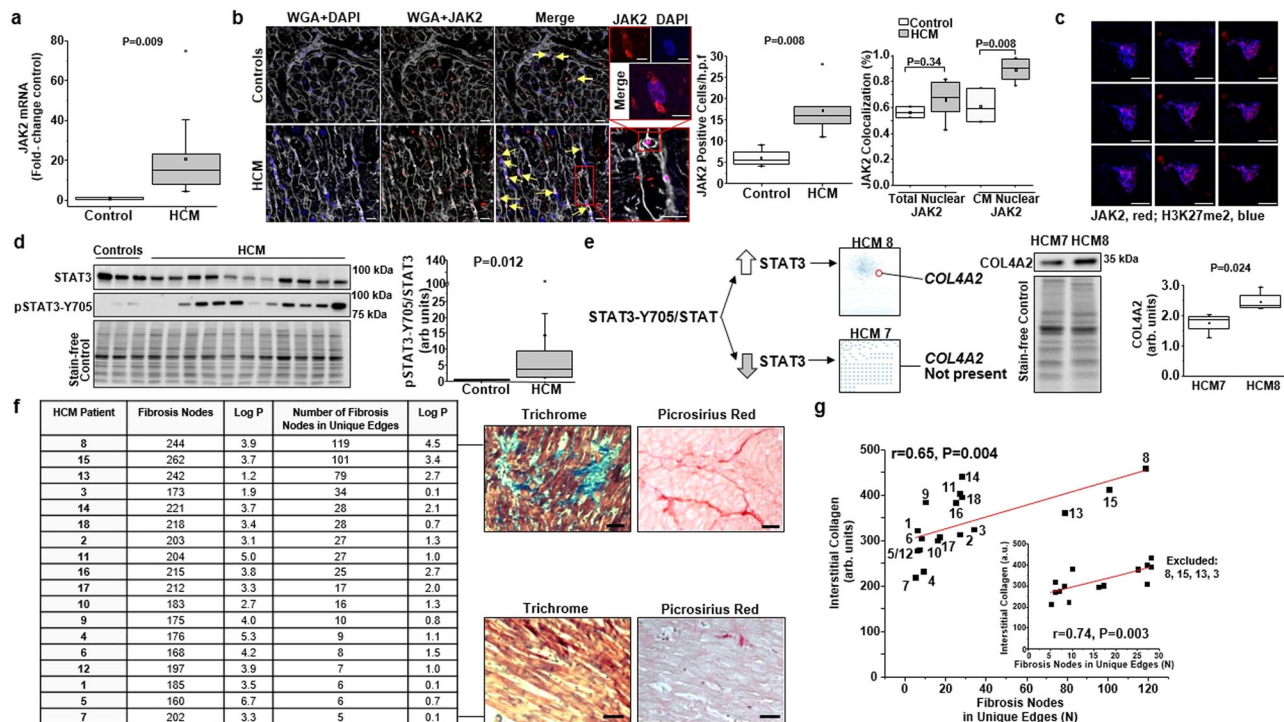


In Figure 3G, the HCM 4 data point was inadvertently omitted when transposing the linear regression curve inset from one file format to the finalized final format.

The incorrect version of Figure 3G is:



The correct version of Figure 3G is:



In addition, in the Supplementary Methods section of the Supplementary Information, the size of the consolidated human interactome was incorrectly reported. The incorrect sentence was 'This new version of the consolidated human interactome has 15,849 proteins and 188,973 interactions and displays a scale-free topology (Supplementary Fig. 7)'. The correct sentence reads: 'This new version of the consolidated human interactome has 15,489 proteins and 188,973 interactions and displays a scale-free topology (Supplementary Fig. 7)'. These errors have been corrected in the HTML and PDF versions of the Article, and the HTML has been updated to include a corrected version of the Supplementary information.

These errors have been corrected in the HTML and PDF versions of the Article, and the HTML has been updated to include a corrected version of the Supplementary information.

Open Access This article is licensed under a Creative Commons Attribution 4.0 International License, which permits use, sharing, adaptation, distribution and reproduction in any medium or format, as long as you give appropriate credit to the original author(s) and the source, provide a link to the Creative Commons license, and indicate if changes were made. The images or other third party material in this article are included in the article's Creative Commons license, unless indicated otherwise in a credit line to the material. If material is not included in the article's Creative Commons license and your intended use is not permitted by statutory regulation or exceeds the permitted use, you will need to obtain permission directly from the copyright holder. To view a copy of this license, visit <http://creativecommons.org/licenses/by/4.0/>.

This is a U.S. government work and not under copyright protection in the U.S.; foreign copyright protection may apply 2024

