

Taxa-specific activity loss and mortality patterns in freshwater trematode cercariae under subarctic conditions

Research Article

Cite this article: Born-Torrijos A, van Beest GS, Vyhliđalov T, Knudsen R, Kristoffersen R, Amundsen P-A, Thieltges DW, Soldnov M (2022). Taxa-specific activity loss and mortality patterns in freshwater trematode cercariae under subarctic conditions. *Parasitology* **149**, 457–468. <https://doi.org/10.1017/S0031182021002006>

Received: 8 July 2021

Revised: 24 September 2021

Accepted: 2 November 2021









First published online: 11 November 2021

Key words:

High latitude regions; larval stages; life cycle; parasite; transmission strategies

Author for correspondence:

Miroslava Soldnov,
E-mail: soldanova@paru.cas.cz

Ana Born-Torrijos¹ , Gabrielle S. van Beest^{1,2} , Tereza Vyhliđalov³ ,
Rune Knudsen⁴ , Roar Kristoffersen⁴ , Per-Arne Amundsen⁴ ,
David W. Thieltges⁵  and Miroslava Soldnov¹ 

¹Institute of Parasitology, Biology Centre, Czech Academy of Sciences, 37005 esk Budjovice, Czech Republic; ²Cavanilles Institute for Biodiversity and Evolutionary Biology, Science Park, University of Valencia, P.O. Box 22085, 46071 Valencia, Spain; ³Faculty of Science, University of South Bohemia in esk Budjovice, Branišovsk 31, 37005 esk Budjovice, Czech Republic; ⁴Department of Arctic and Marine Biology, Faculty of Biosciences, Fisheries and Economics, UiT The Arctic University of Norway, N9037 Troms, Norway and ⁵Department of Coastal Systems, NIOZ Royal Netherlands Institute for Sea Research, P.O. Box 59, 1790, AB Den Burg, Texel, The Netherlands

Abstract

Cercarial activity and survival are crucial traits for the transmission of trematodes. Temperature is particularly important, as faster depletion of limited cercarial energy reserves occurs at high temperatures. Seasonal climate conditions in high latitude regions may be challenging to complete trematode life cycle during the 6-month ice-free period, but temperature effects on the activity and survival of freshwater cercariae have not been previously identified. After experimentally simulating natural subarctic conditions during warmer and colder months (13 and 6C), a statistical approach identifying changes in the tendency of cercarial activity loss and mortality data was used to detect differences in three trematode genera, represented by four taxa (*Diplostomum* spp., *Apatemon* spp., small- and large-sized *Plagiorchis* spp.). A strong temperature-dependent response was identified in both activity loss and mortality in all taxa, with *Diplostomum* spp. cercariae showing the most gradual changes compared to other taxa. Furthermore, whilst activity loss and mortality dynamics could not be divided into ‘fish- vs invertebrate-infecting cercariae’ groups, the detected taxa-specific responses in relation to life-history traits indicate the swimming behaviour of cercariae and energy allocation among larvae individuals as the main drivers. Cercariae exploit the short transmission window that allows a stable continuance of trematodes’ life cycles in high-latitude freshwater ecosystems.

Introduction

Many parasite taxa such as trematodes have complex life cycles that involve several developmental stages and subsequent hosts (Galaktionov and Dobrovolskij, 2003). The transmission of trematodes from their first intermediate molluscan hosts to the next invertebrate or vertebrate hosts is typically undertaken by free-living larval stages (cercariae). These cercariae are non-feeding motile stages that need to effectively disperse, localize and infect the next suitable host during their short lifespan (typically 24–72 h; Combes *et al.*, 1994; Morley, 2012). Depending on host type and environmental conditions, transmission strategies involving a great variety of morphological and behavioural features (body size and structure, emergence patterns, swimming activity or vertical distribution in the water column) have evolved making trematodes successful in completing their life cycle (Combes *et al.*, 1994; Morley, 2012).

Cercarial lifespan is generally species-specific, with cercarial activity and survival continuously decreasing over time. The active period of cercariae usually represents the functional lifespan, when infectivity is maximal within a few hours post-emergence from the molluscan host (Ginetsinskaya, 1988; Karvonen *et al.*, 2003). When activity starts to decrease with cercarial ageing, survival starts to decrease as well so that a reduction of longevity is usually linked to a reduction of the active infective period (Lowenberger and Rau, 1994; Pechenik and Fried, 1995). Both cercarial activity and survival are crucial traits for the transmission success, being influenced by several mutually interacting factors under changing environmental conditions (Evans, 1985; Rea and Irwin, 1995; McCarthy, 1999a; Pietrock and Marcogliese, 2003; Thieltges *et al.*, 2008; Koprivnikar *et al.*, 2010; Studer *et al.*, 2010). Temperature is a particularly important factor (e.g. Lawson and Wilson, 1980; Evans, 1985; Rea and Irwin, 1995; McCarthy, 1999b; Mouritsen, 2002), as the depletion of the limited cercarial glycogen energy reserves (Anderson and Whitfield, 1975; Ginetsinskaya, 1988) occurs at higher rates at elevated temperatures, usually resulting in a decrease of cercarial activity and survival (Pechenik and Fried, 1995; McCarthy, 1999b; Karvonen *et al.*, 2003; Thieltges and Rick, 2006; Studer *et al.*, 2010; Studer and Poulin, 2013). However, constant cercarial activity and survival over a larger range of temperatures, as well as increased activity at warmer conditions, have also previously been reported (e.g. Koprivnikar *et al.*, 2010; Morley, 2011; Selbach and Poulin, 2020).

While extensive literature exists on the effects of temperature on the activity and survival of cercariae in temperate regions (e.g. Fingerut *et al.*, 2003; Thieltges and Rick, 2006; Studer and Poulin, 2013; Selbach and Poulin, 2020), research from high latitudes (>60°N) is so far limited to marine snail-trematode systems (Prokofiev, 1999, 2001). At subarctic and arctic latitudes, the seasonal climate may be challenging for lacustrine trematodes to complete their life cycle during the short ice-free period (<6 months). It has been proposed that trematode taxa can have different survival adaptations to the thermal range experienced in their aquatic habitats, depending on particular geographical environmental conditions (Morley, 2011; Studer and Poulin, 2014). There may also be temperature adaptations in trematode transmission strategies such as cercarial activity and survival to the highly seasonal and cold environments at high latitudes. However, whilst cercarial emergence patterns at low temperatures have been investigated in both temperate and high latitude regions (e.g. 4–20°C, Lyholt and Buchmann, 1996; 4–18°C, Brassard *et al.*, 1982; 6–27°C, Prokofiev *et al.*, 2016; 8°C, Nikolaev *et al.*, 2020), temperature effects on the activity and survival of freshwater cercariae under these conditions still remain to be identified. Investigating general patterns of these important aspects of cercarial biology in relation to seasonal conditions is essential for a better understanding of trematode population and transmission dynamics at high latitudes. Furthermore, this knowledge will be pivotal evaluating the implications of global warming on parasite transmission in colder northern latitudes that are considered most vulnerable to climate change (Kutz *et al.*, 2009; Mas-Coma *et al.*, 2009).

In this study, a series of laboratory experiments simulating natural subarctic conditions in warmer and colder months (two temperature scenarios) were conducted to characterize cercarial activity and survival of different trematode taxa parasitizing a freshwater snail species, the lymnaeid *Radix balthica* (Soldánová *et al.*, 2017). We used a statistical approach standardly applied in other research areas different to parasitology such as ichthyology and clinical fields (e.g. Ganna *et al.*, 2013; Halttunen *et al.*, 2017, but see van Beest *et al.*, 2019), where activity loss and mortality of cercariae are analysed as a proxy for activity and survival. We further detected different time sections that represent a change in the tendency of data, expecting the first time section to represent the most infective period of the cercariae. We investigated four trematode taxa that differ in terms of morphology, life history and transmission strategy with the aim (1) to quantify the effect of the two temperature scenarios on cercarial activity loss and mortality in the different trematode taxa, and (2) to compare cercarial activity loss and mortality among the four trematode taxa and to relate them to specific morphology and behaviour of the cercariae. We hypothesized that cercarial activity loss and mortality are strongly temperature-dependent, likely showing reduced activity loss and higher mortality at higher temperature. Furthermore, we expect that taxa-specific responses will be related to different life-history traits and transmission strategies to localize and infect their next target hosts, with fish-infecting cercariae (as opposed to invertebrate-infecting) showing a faster increase in activity loss and mortality due to the costly swimming activity.

Materials and methods

Parasite and host material

Radix balthica snails were collected by hand from the littoral zone of the subarctic lake Takvatn, northern Norway (69°07'N, 19°05'E) during August and October 2018. Snails were individually incubated in beakers containing 30 mL of lake water under a light source for 24 h, and emerging cercariae were identified *in vivo*

according to previous research (Soldánová *et al.*, 2017). Three genera, represented by four trematode taxa, exhibiting different cercarial morphological features, emergence and swimming behaviours, were selected for experimental trials of cercarial activity loss and mortality, including *Diplostomum* spp. (Diplostomidae; total length: ~690 µm), *Apatemon* spp. (Strigeidae; ~530 µm) and *Plagiorchis* spp. (Plagiorchiidae), in which two taxa were distinguished as small-sized *Plagiorchis* spp. (~380 µm) and large-sized *Plagiorchis* spp. (~630 µm) due to overlapping morphological features within this genus, encompassing seven species/lineages in subarctic areas (Soldánová *et al.*, 2017; Kudlai *et al.*, 2021). These genera utilize a three-host life cycle involving bird definitive hosts, but two types of second intermediate hosts, with cercariae either infecting fish (*Diplostomum* spp. and *Apatemon* spp.) or benthic amphipods or aquatic insects (*Plagiorchis* spp.) (Fig. 1). *Diplostomum* spp. and *Apatemon* spp. have furcocercous cercariae (i.e. bifurcated tail) that display vertical distribution within the water column and intermittent swimming periods, with *Apatemon* resting for much shorter periods. Furthermore, while *Diplostomum* spp. shows a positive photo-orientation, *Apatemon* shows negative phototaxy (Bell, 1996; Haas *et al.*, 2008). Benthic monocercous xiphidiocercariae (i.e. body with stylet and simple tail) exhibit negative phototaxy and geotaxy, swimming close to the bottom with a continuous and rather slow movement (Lowenberger and Rau, 1994). Cercariae of *Diplostomum* spp. show diurnal emergence, whereas *Apatemon* and *Plagiorchis* show nocturnal emergence (Bell, 1996; McCarthy, 1999a; Karvonen *et al.*, 2004; Haas *et al.*, 2008, but see diurnal-emerging *Plagiorchis* species in Gorman, 1980). All snails infected with one of the model trematodes were maintained at experimental temperatures, replacing daily the filtered lake water and regularly fed with lettuce (*Lactuca sativa*).

Experimental design

To record cercarial activity loss and mortality of the four trematode taxa, laboratory-controlled experiments simulating field water temperature and photoperiod conditions in lake Takvatn were conducted. These scenarios represented subarctic warmer (August; 13°C and 20:4 h light:dark photoperiod) and colder (October; 6°C and 10:14 h) months from the ice-free period, based on data recorded in the field by data loggers (Onset HOBO UA-002-64 Pendant 64 K). A pool of live and active cercariae of the same age (<2 h) was collected from different snail individuals to account for potential variability, using the same group of snails throughout the experiments for each temperature setting/field collection. Cercariae were pipetted into six-well plates, placing approximately five cercariae into 6 mL of filtered lake water (i.e. ~30 cercariae per plate). Plates were then placed in climatic rooms (13 and 6°C) adjusted to reflect natural conditions including sunrise and sunset. Different number of plates with incubated cercariae for each trematode taxon and temperature were used, depending on the availability of infected snails, with a minimum of 200 monitored cercariae for most of the trials (Supplementary Table S1). Once the experiment started, cercarial activity loss and mortality were visually checked and recorded under the stereo microscope after 4 h, and thereafter every 2 h until cercarial death. Live cercariae were classified as active (swimming cercariae) or not active (cercariae barely swimming or crawling, showing erratic movements and spontaneous spasms). Furthermore, cercariae were considered dead when not showing any spasmodic movements and not responding to mechanical stimuli with a fine needle (Koprivnikar *et al.*, 2010; van Beest *et al.*, 2019).

To minimize snail mortality in captivity and ensure a sufficient amount of cercariae for experiments, two climatic rooms were used indistinctly for each temperature scenario (13 and 6°C).

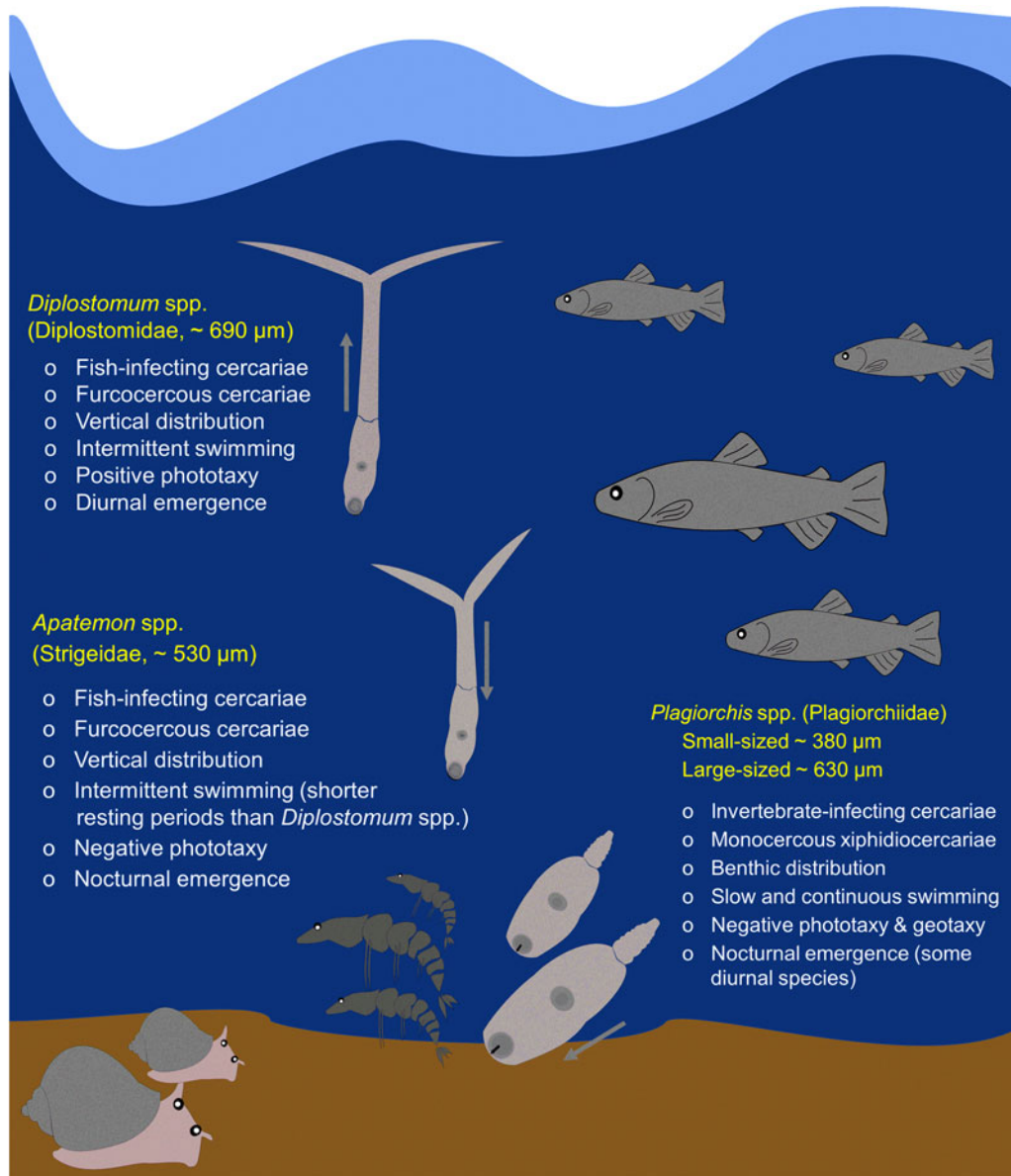


Fig. 1. Summary of the life-history traits and transmission strategies (i.e. next target hosts, morphological features, distribution in the water column, swimming behaviours and emergence patterns) of cercariae of the three genera selected for the present study, represented by four trematode taxa: *Diplostomum* spp., *Apatemon* spp., small- and large-sized *Plagiorchis* spp. (see Materials and methods for references). Arrows indicate the direction of phototaxy. The size of cercariae is in proportion to their original size.

To be able to do this, a possible confounding effect of climatic rooms on activity loss and mortality of small-sized *Plagiorchis* spp. was tested prior to experiments with other trematodes by running trials before and after inverting the temperature in both rooms. Results of a regression Weibull model (package *survival*, using *survreg*; Therneau, 2020) revealed differences in both activity loss and mortality of cercariae between some individual plates within the same room (RWM, $P < 0.05$) and no significant differences between some individual plates from different rooms (RWM, $P > 0.05$). Furthermore, activity and survival curves followed the same dynamics in both rooms, suggesting that the observed differences are related to the individual plates and therefore not affected by the climatic rooms themselves.

Statistical analysis

To assess the variation in activity loss and mortality rates of cercariae as well as to investigate differences between temperatures and cercariae of different trematode taxa, data were first

transformed into individual observations for each cercaria. Data were tested by a Cox proportional hazards regression model (survival::CoxPH, Therneau, 2020). This type of analysis aims to model time to event data, considering death as the event. In this study, we also considered the death of a cercaria as the event to monitor the end of its survival, whereas for activity analyses, we considered the loss of activity of a cercaria as the event to monitor the end of its activity. Therefore, the statistical analyses investigate differences in cercarial activity loss and mortality, as proxies for cercarial activity and survival (i.e. increased activity loss implies lower activity, whereas increased mortality implies lower survival). Similarly, activity loss or mortality represents the probability of cercariae being not active or dead at a given time point, i.e. increased activity loss at higher temperature implies an increased probability of cercariae not being active at that temperature. When analysing the data, if they did not show a constant proportional hazard between levels (using survival::cox.zph, validated at $P > 0.05$), step functions were used, creating time sections based on the model's residual plots (using survival::survSplit). Different time sections

imply a change in the tendency of the data, i.e. when the activity loss or mortality pattern of cercariae changes over time, this is detected and data are split into different sections. Thus, the number of time sections depends on the used dataset, i.e. selected trematode taxa and temperature. This newly applied analytical approach including time sections helps to uncover changes in the activity loss and mortality patterns of cercariae that otherwise would remain overlooked if considering only the total duration of the active periods (e.g. potential periods when the majority of cercariae are active and thus potentially infective).

First, the effect of temperature on cercarial activity loss and mortality was evaluated for each trematode separately (*Diplostomum* spp., *Apatemon* spp., and small- and large-sized *Plagiorchis* spp.), using CoxPH analyses with temperature as a factor (6 vs 13°C, using 6°C as the baseline to which 13°C is compared), and plates as random effect. When experiments could not be run simultaneously due to insufficient amount of cercariae of the same age, the trial was also included as a random effect (i.e. *Diplostomum* spp., small-sized *Plagiorchis* spp.). Second, the activity loss and mortality among cercariae taxa at the same temperature (either 6 or 13°C) were compared. CoxPH analyses were used for each temperature separately with trematode as a factor (*Diplostomum* spp. vs *Apatemon* spp. vs small-sized *Plagiorchis* spp. vs large-sized *Plagiorchis* spp., each used in different analyses as the baseline to which one of the other taxa is compared), and plates and trial as random effects. Survival function curves were created using the Kaplan–Meier estimator (survival::survfit). Censored data (i.e. when a cercaria survives or remains active unexpectedly longer than the experimental period) were included in statistical analyses according to Crawley (2013) for *Diplostomum* spp. and *Apatemon* spp. All analyses were performed in R (R Core Team, 2017; version 3.0.1).

Results

Our analyses revealed significant differences in cercarial activity loss and mortality of the four trematode taxa belonging to three genera in relation to temperature (6 and 13°C). Depending on the trematode identity and/or temperature combination, our results suggested different time sections according to the proportionality of the Hazard Ratio, implying a change in the activity loss (section 'i' in all Tables) or mortality (section 'ii' in all Tables) of cercariae (see below). A temperature-dependent response was detected for most of the taxa and, when comparing different trematodes, differences were larger between *Diplostomum* spp. and the other three taxa.

Effect of temperature on cercarial activity loss and mortality within trematode taxa

Differences in activity loss rates between temperatures were similar in all trematode taxa, showing *Diplostomum* spp. the most pronounced difference in the last time section (Table 1i). As for mortality rates, cercariae of *Diplostomum* spp. and large-sized *Plagiorchis* spp. showed the smallest differences between temperatures, whereas differences in mortality of *Apatemon* spp., and especially small-sized *Plagiorchis* spp., were substantial (Table 1ii).

The activity loss rate of *Diplostomum* spp. cercariae was divided into three time sections, showing a 2-fold lower activity loss at 13°C compared to 6°C during the first 9 h of cercarial age (i.e. higher activity, Table 1i). Thereafter cercariae showed higher activity loss at 13°C during the next two time sections. In contrast, mortality was higher at 13°C compared to 6°C during the two detected time sections (1- and 2-fold increased mortality, respectively; Table 1ii). Cercariae of *Apatemon* spp. showed a decreased activity loss and an 8-fold higher mortality at 13°C, both within the single

measured time section (Table 1). Cercarial activity loss patterns of both morphotypes of *Plagiorchis* spp. were similar to some degree, each being split into three time sections. Small-sized *Plagiorchis* spp. showed a 4-fold higher activity loss at 13°C compared to 6°C during the first 15 h, which later changed, showing a 2-fold decreased activity loss within the following two sections (Table 1i). The activity loss of large-sized *Plagiorchis* spp. cercariae remained comparable between temperatures during the first two time sections and differed significantly only in the last section with a 3-fold decreased activity loss after 44 h at 13°C compared to 6°C. Higher mortality of small-sized *Plagiorchis* spp. was detected at 13°C along their whole lifespan, thus detecting a single time section (12-fold increased mortality, Table 1ii). Cercarial mortality of large-sized *Plagiorchis* spp. split into two time sections, first with 2-fold higher, and second with 3-fold lower mortality at 13°C. This indicates that although large-sized *Plagiorchis* spp. cercariae suffer from higher mortality at 13°C at the beginning of their lifespan within the first 44 h, they die at a slower rate during the remaining life period.

Differences among trematode taxa in cercarial activity loss and mortality during warm subarctic conditions

Activity loss rates of all trematode pairwise combinations were divided into three time sections and mortality rates into two time sections (Table 2). Differences in both activity loss and mortality at 13°C were stronger when comparing the cercariae of *Diplostomum* spp. with the three other trematode taxa, following similar patterns in corresponding time sections with *Apatemon* spp., and small- and large-sized *Plagiorchis* spp. That is, a significantly decreased activity loss was recorded during the first 16 h (2- to 19-fold across compared trematode, Table 2i), followed by increased activity loss in the second and third time sections when comparing small-sized *Plagiorchis* spp. and especially *Apatemon* spp. to *Diplostomum* spp. (8- to 72-fold increased activity loss). The activity loss of large-sized *Plagiorchis* spp. and *Diplostomum* spp. did not differ in the second time section, but showed a significant 6-fold increased activity loss of large-sized *Plagiorchis* spp. in the third section (Table 2i). Mortality of *Diplostomum* spp. at 13°C was significantly higher during the first 27 h compared to the three other trematode taxa (9- to 20-fold lower mortality of compared taxa), thereafter decreasing *Diplostomum* spp.' mortality in the second time sections (14- to 39-fold higher mortality of compared taxa, Table 2ii).

Activity loss and mortality of *Apatemon* spp. cercariae were different when compared to small- and large-sized *Plagiorchis* spp. While in the first 16 h small-sized *Plagiorchis* spp. showed a 7-fold activity loss increase compared to *Apatemon* spp., the second time section was comparable between both taxa, whereas in the third section both *Plagiorchis* morphotypes showed a decreased activity loss compared to *Apatemon* spp. (12- to 16-fold across *Plagiorchis* spp.). Comparable mortality rates were found between *Apatemon* spp. and both *Plagiorchis* morphotypes during the first 27 h, whereas small-sized *Plagiorchis* spp. showed a 3-fold higher mortality than *Apatemon* spp. in the second time section (Table 2ii).

The activity loss patterns of both *Plagiorchis* morphotypes were similar except for the first 16 h, when large-sized *Plagiorchis* spp. showed an 8-fold lower activity loss than small-sized *Plagiorchis* spp. (Table 2i). Mortality of both small- and large-sized *Plagiorchis* at 13°C was similar at both time sections.

Differences among trematode taxa in cercarial activity loss and mortality during cold subarctic conditions

Both activity loss and mortality rates of all trematode pairwise combinations were divided into three time sections (Table 3).

Table 1. Evaluation of the differences in (i) activity loss and (ii) mortality of cercariae of four trematode taxa between temperatures (6 vs 13°C)

Trematode taxa (<i>N</i> , number cercariae)	(i) Activity loss						(ii) Mortality					
	Time section	exp ^(β) ^a	se(β) ^b	z-value ^c	<i>P</i> value	Interpretation of activity loss	Time section	exp ^(β)	se(β)	z-value	<i>P</i> value	Interpretation of mortality
<i>Diplostomum</i> spp. 6°C, <i>N</i> = 415 13°C, <i>N</i> = 298	0–9 h	0.581	0.137	−3.973	<0.001	1.72 times ▼	0–22 h	1.354	0.1015	2.985	0.003	1.35 times ▲
	9–22 h	2.764	0.207	4.916	<0.001	2.76 times ▲	22–76 h	1.673	0.2398	2.145	0.032	1.67 times ▲
	22–76 h	5.3506	0.307	5.459	<0.001	5.35 times ▲						
<i>Apatemon</i> spp. 6°C, <i>N</i> = 215 13°C, <i>N</i> = 214	0–38 h	0.669	0.113	−3.558	<0.001	1.49 times ▼	0–68 h	7.888	0.1462	14.120	<0.001	7.89 times ▲
Small-sized <i>Plagiorchis</i> spp. 6°C, <i>N</i> = 426 13°C, <i>N</i> = 423	0–15 h	3.649	0.119	10.923	<0.001	3.65 times ▲	0–72 h	11.668	0.120	20.470	<0.001	11.67 times ▲
	15–20 h	0.505	0.177	−3.851	<0.001	1.98 times ▼						
	20–48 h	0.594	0.262	−1.990	0.047	1.68 times ▼						
Large-sized <i>Plagiorchis</i> spp. 6°C, <i>N</i> = 62 13°C, <i>N</i> = 65	0–33 h	1.510	0.373	1.105	0.269		0–44 h	1.641	0.2492	1.988	0.047	1.64 times ▲
	33–44 h	0.762	0.468	−0.582	0.561		44–86 h	0.347	0.3986	−2.653	0.008	2.88 times ▼
	44–70 h	0.299	0.564	−2.142	0.032	3.35 times ▼						

Results evaluating (i) Cox proportional hazards regression (CoxPH) [time active cercariae – temperature + plate (random) + trial (random)], and (ii) Cox proportional hazards regression (CoxPH) [time live cercariae – temperature + plate (random) + trial (random)]. If step function was required to accomplish the model assumptions, selected time sections are indicated in the table. The interpretation of results, comparing 6°C to 13°C, uses arrows to indicate a higher (▲) or lower (▼) activity loss or mortality of cercariae at 13°C. Statistically significant results (at $\alpha=0.05$) are indicated in bold.

^aHazard ratio (exponentiated coefficients). The hazard rate of cercariae at 6°C in both models (i, ii) is 1, to which the other levels are compared. If exp^(β) < 1, activity loss or mortality risk is reduced for the trematode taxa at 13°C.

^bStandard error of coefficients.

^cTest criterion value.

Table 2. Evaluation of the differences in (i) activity loss and (ii) mortality among cercariae of different trematode taxa at 13°C

Trematode taxa (N, number cercariae)	(i) Activity loss						(ii) Mortality					
	Reference vs compared	Time section	exp ^(β) ^a	se(β) ^b	z-value ^c	P value	Interpretation of activity loss	Time section	exp ^(β)	se(β)	z-value	P value
<i>Diplostomum</i> spp. – <i>Apatemon</i> spp. N = 298 – N = 215	0–16 h	0.067	0.190	–14.297	<0.001	15.04 times ▼	0–27 h	0.10	0.175	–13.448	<0.001	10.47 times ▼
	16–27 h	13.333	0.343	7.552	<0.001	13.33 times ▲	27–54 h	14.714	0.316	8.509	<0.001	14.71 times ▲
	27–52 h	71.751	0.667	6.406	<0.001	71.75 times ▲						
<i>Diplostomum</i> spp. – small-sized <i>Plagiorchis</i> spp. N = 298 – N = 423	0–16 h	0.432	0.112	–7.500	<0.001	2.31 times ▼	0–27 h	0.111	0.134	–16.375	<0.001	9.02 times ▼
	16–27 h	7.756	0.212	9.665	<0.001	7.75 times ▲	27–54 h	38.964	0.264	13.897	<0.001	38.96 times ▲
	27–52 h	4.420	0.413	3.599	<0.001	4.42 times ▲						
<i>Diplostomum</i> spp. – large-sized <i>Plagiorchis</i> spp. N = 298 – N = 65	0–16 h	0.053	0.596	–4.934	<0.001	18.96 times ▼	0–27 h	0.049	0.473	–6.371	<0.001	20.31 times ▼
	16–27 h	2.683	0.774	1.274	0.203		27–86 h	17.487	0.564	5.072	<0.001	17.49 times ▲
	27–70 h	5.768	0.696	2.519	0.012	5.77 times ▲						
<i>Apatemon</i> spp. – small-sized <i>Plagiorchis</i> spp. N = 215 – N = 423	0–16 h	6.499	0.168	11.130	<0.001	6.51 times ▲	0–27 h	1.161	0.140	1.064	0.288	
	16–27 h	0.582	0.334	–1.620	0.105		27–48 h	2.648	0.231	4.213	<0.001	2.65 times ▲
	27–38 h	0.0616	0.772	–3.612	<0.001	16.23 times ▼						
<i>Apatemon</i> spp. – large-sized <i>Plagiorchis</i> spp. N = 215 – N = 65	0–16 h	0.793	0.619	–0.374	0.708		0–27 h	0.515	0.497	–1.334	0.182	
	16–27 h	0.201	0.829	–1.935	0.053		27–86 h	1.188	0.573	0.301	0.763	
	27–70 h	0.080	0.960	–2.627	0.009	12.44 times ▼						
Small-sized <i>Plagiorchis</i> spp. – large-sized <i>Plagiorchis</i> spp. N = 423 – N = 65	0–16 h	0.122	0.598	–3.516	<0.001	8.19 times ▼	0–27 h	0.444	0.483	–1.682	0.093	
	16–27 h	0.346	0.766	–1.386	0.166		27–86 h	0.449	0.531	–1.510	0.131	
	27–70 h	1.305	0.720	0.370	0.712							

Results evaluating (i) Cox proportional hazards regression (CoxPH) [time active cercariae at 13°C – trematode taxa + plate (random) + trial (random)], and (ii) Cox proportional hazards regression (CoxPH) [time live cercariae at 13°C – trematode taxa + plate (random) + trial (random)]. If step function is required to accomplish the model assumptions, time sections are indicated in the table. The interpretation of results, comparing the different taxa of cercariae at 13°C, use arrows to indicate a higher (▲) or lower (▼) activity loss or mortality of the compared trematode taxa (right place in first column). Statistically significant results (at $\alpha = 0.05$) are indicated in bold.

^aHazard ratio (exponentiated coefficients). The hazard rate (exp^(β)) of cercariae of each taxon (located in left side of first column) in both models (i, ii) is 1, to which the other taxa are compared. If exp^(β) < 1, activity loss or mortality is reduced for the compared trematode taxa (right place in first column).

^bStandard error of coefficients.

^cTest criterion value.

Table 3. Evaluation of the differences in (i) activity loss and (ii) mortality among cercariae of different trematode taxa at 6°C

Trematode taxa (N, number cercariae)	(i) Activity loss						(ii) Mortality					
	Reference vs compared	Time section	exp ^(β) ^a	se(β) ^b	z-value ^c	P value	Interpretation of activity loss	Time section	exp ^(β)	se(β)	z-value	P value
<i>Diplostomum</i> spp. – <i>Apatemon</i> spp. N = 415 – N = 215	0–13 h	0.281	0.209	–6.078	<0.001	3.56 times ▼	0–26 h	0.098	0.242	–9.594	<0.001	10.23 times ▼
	13–22 h	10.729	0.273	8.708	<0.001	10.73 times ▲	26–44 h	5.927	0.299	5.955	<0.001	5.92 times ▲
	22–76 h	57.114	0.307	13.196	<0.001	57.11 times ▲	44–76 h	21.123	0.316	9.643	<0.001	21.12 times ▲
<i>Diplostomum</i> spp. – small-sized <i>Plagiorchis</i> spp. N = 415 – N = 426	0–13 h	0.060	0.227	–12.395	<0.001	16.69 times ▼	0–26 h	0.069	0.187	–14.307	<0.001	14.56 times ▼
	13–22 h	29.135	0.269	12.560	<0.001	29.13 times ▲	26–44 h	26.774	0.239	13.739	<0.001	26.77 times ▲
	22–76 h	46.31	0.276	13.875	<0.001	46.31 times ▲	44–76 h	52.312	0.326	12.138	<0.001	52.31 times ▲
<i>Diplostomum</i> spp. – large-sized <i>Plagiorchis</i> spp. N = 415 – N = 62	0–13 h	0.023	1.016	–3.711	<0.001	43.37 times ▼	0–26 h	0.026	0.723	–5.024	<0.001	37.76 times ▼
	13–22 h	2.353	1.250	0.684	0.494		26–44 h	67.352	0.776	5.427	<0.001	67.35 times ▲
	22–76 h	40.694	1.045	3.547	<0.001	40.69 times ▲	44–78 h	211.540	0.800	6.691	<0.001	211.54 times ▲
<i>Apatemon</i> spp. – small-sized <i>Plagiorchis</i> spp. N = 215 – N = 426	0–13 h	0.213	0.296	–5.225	<0.001	4.69 times ▼	0–26 h	0.703	0.293	–1.204	0.229	
	13–22 h	2.716	0.333	3.001	0.003	2.72 times ▲	26–44 h	4.5174	0.328	4.600	<0.001	4.52 times ▲
	22–48 h	0.811	0.353	–0.594	0.552		44–72 h	2.4766	0.405	2.240	0.025	2.48 times ▲
<i>Apatemon</i> spp. – large-sized <i>Plagiorchis</i> spp. N = 215 – N = 62	0–13 h	0.082	1.037	–2.412	0.016	12.20 times ▼	0–26 h	0.271	0.762	–1.714	0.087	
	13–22 h	0.219	1.272	–1.193	0.233		26–44 h	11.364	0.815	2.983	0.003	11.36 times ▲
	22–64 h	0.713	1.079	–0.314	0.753		44–78 h	10.015	0.843	2.733	0.006	10.01 times ▲
Small-sized <i>Plagiorchis</i> spp. – large-sized <i>Plagiorchis</i> spp. N = 426 – N = 62	0–13 h	0.385	1.037	–0.921	0.357		0–26 h	0.386	0.741	–1.285	0.199	
	13–22 h	0.081	1.264	–1.991	0.047	12.38 times ▼	26–44 h	2.516	0.783	1.177	0.239	
	22–64 h	0.879	1.064	–0.121	0.903		44–78 h	4.048	0.788	1.774	0.076	

Results evaluating (i) Cox proportional hazards regression (CoxPH) [time active cercariae at 6°C – trematode taxa + plate (random) + trial (random)], and (ii) Cox proportional hazards regression (CoxPH) [time live cercariae at 6°C – trematode taxa + plate (random) + trial (random)]. If step function is required to accomplish the model assumptions, time sections are indicated in the table. The interpretation of results, comparing the different taxa of cercariae at 6°C, use arrows to indicate a higher (▲) or lower (▼) activity loss or mortality of the compared trematode taxa (right place in first column). Statistically significant results (at $\alpha = 0.05$) are indicated in bold.

^aHazard ratio (exponentiated coefficients). The hazard rate (exp^(β)) of cercariae of each taxon (located in left side of first column) in both models (i, ii) is 1, to which the other taxa are compared. If exp^(β) < 1, activity loss or mortality is reduced for the compared trematode taxa (right place in first column).

^bStandard error of coefficients.

^cTest criterion value.

Statistically significant differences in activity loss and mortality at 6°C were most pronounced when comparing *Diplostomum* spp. with the three other taxa, especially in comparison with large-sized *Plagiorchis* spp. (Table 3, Fig. 2). Cercarial activity loss of *Diplostomum* spp. followed a similar pattern when compared to the other trematode taxa, all the latter showing lower activity loss during the first 13 h (4- to 43-fold across trematode taxa), followed by increased activity loss compared to *Diplostomum* spp. in the second time section, and especially pronounced in the third time section (41- to 57-fold across trematode taxa). The only exception was the comparable activity loss rates between *Diplostomum* spp. and large-sized *Plagiorchis* spp. during the second time section (Table 3i). As for mortality, *Apatemon* spp., small- and large-sized *Plagiorchis* spp. showed lower mortality than *Diplostomum* spp. cercariae during the first time section within 26 h (i.e. 10- to 38-fold), and thereafter showed higher mortality with different change rates depending on the compared trematode taxa and time section (Table 3), the differences being especially strong when compared to large-sized *Plagiorchis* spp.

The activity loss of *Apatemon* spp. cercariae was significantly higher in the first time section when compared to both small- and large-sized *Plagiorchis* spp., the latter showing a 5- to 12-fold decreased activity loss compared to *Apatemon* spp. during the first 13 h (Table 3i). Thereafter, a significant change in terms of *Apatemon* spp. decreased activity loss was detected only in the second time section compared to small-sized *Plagiorchis* spp. Similar mortality rates of *Apatemon* spp. cercariae and both morphotypes of *Plagiorchis* were found in the first time sections, but differed significantly after 26 h, showing that both *Plagiorchis* spp. increased their mortality during the next two time sections (2- to 11-fold, Table 3ii). These differences were more pronounced in comparison to large-sized *Plagiorchis* spp.

The two *Plagiorchis* morphotypes were the most similar in both activity loss and mortality, showing significant differences only in their activity loss rates in the second section, as a 12-fold lower activity loss of large-sized *Plagiorchis* spp. was found compared to small-sized *Plagiorchis* spp. (Table 3i).

Discussion

Our results demonstrate the first hypothesis that cercarial activity loss and mortality of the four studied trematode taxa from a subarctic freshwater lake are overall strongly temperature-dependent by showing lower activity loss during the first hours of cercarial lifespan and higher mortality at higher temperature for most of the taxa. The lack of a common pattern in terms of similar changes in activity loss and mortality in relation to temperature variation makes it clear that taxa-specific responses exist at each temperature, suggesting an adaptation of trematodes to the short transmission window under the cold and highly seasonal subarctic conditions by having behaviours that allow active periods during the cercarial lifespan to maximize the transmission rates to their next intermediate hosts. Differences were larger between *Diplostomum* spp. and the other three trematode taxa, not supporting our second hypothesis about the division of activity loss and mortality dynamics into 'fish- vs invertebrate-infecting cercariae' groups, as among the fish-infecting cercariae of *Diplostomum* spp., as opposed to *Apatemon* spp., exhibited a faster increase in activity loss and mortality during the first hours of their lifespan. Besides, our statistical approach allowed to identify changes in the dynamics of cercarial activity loss and mortality data, thereby recognizing specific time sections. The first time section likely represents the functional lifespan/infective period that cercariae have to infect the next suitable hosts, as shown for numerous species for which the infectivity represents 20–50% of the survival time

(Evans and Gordon, 1983; Evans, 1985; Lowenberger and Rau, 1994; Pechenik and Fried, 1995; McCarthy, 1999b; Karvonen *et al.*, 2003; Thieltges and Rick, 2006). Overall, this study highlights that new knowledge on parasite transmission strategies related to the activity loss and mortality of cercariae is highly valuable to understand the ecological dynamics of lacustrine trematodes in high latitude areas.

The strongly temperature-dependent cercarial activity loss and mortality of the studied trematodes, showing taxa-specific responses, is a phenomenon commonly reported in both freshwater and marine trematodes (Poulin, 2006; Thieltges *et al.*, 2008; Morley, 2011). Whilst the life-expectancy of subarctic cercariae was comparable to that reported for other trematodes at a similar temperature range (e.g. 3–15°C; Lo and Lee, 1996; Lyholt and Buchmann, 1996; McCarthy, 1999b; Prokofiev, 1999, 2001; Thieltges and Rick, 2006), it was longer than under warmer conditions (e.g. >15°C; Pechenik and Fried, 1995; Bell, 1996; Mouritsen, 2002; Muñoz-Antolí *et al.*, 2002; Karvonen *et al.*, 2003; Koprivnikar *et al.*, 2010; Studer and Poulin, 2013). Nevertheless, both cercarial activity loss and mortality seem to follow similar trends as taxa inhabiting warmer areas in terms of a generally increased mortality at higher temperatures (with exception of the large-sized *Plagiorchis* spp. at an advanced age).

Diplostomum spp. cercariae remained active during their early life period at 13°C, thus showing a vigorous swimming behaviour during their most infective period. Thereafter they underwent a loss of activity that drove them to a more passive period until their death. Furthermore, whilst a higher mortality rate of *Diplostomum* spp. was detected at 13°C, the difference in mortality between the two temperatures was less pronounced than observed for the other taxa, pointing to a higher stability in survival of this trematode across temperatures as suggested for other species (e.g. Koprivnikar *et al.*, 2010; Morley, 2011; Selbach and Poulin, 2020). *Apatemon* spp. exhibited lower activity loss during its whole lifespan and higher mortality at 13°C, which suggests that despite a lower mortality at 6°C, the activity loss hinders the infection success of cercariae in the subsequent hosts during colder months. Cercariae of both trematodes thus seem to take advantage of the summer months to infect their next intermediate fish hosts. This has been previously described to occur in eye fluke cercariae, which, even though successfully infecting their fish hosts at 7–15°C, were 4–5 times more infective at the warmest temperatures (Lyholt and Buchmann, 1996). Additionally, the cercarial output and transmission of eye flukes to fish in high latitude regions occurs from June to September, peaking in August (e.g. Brassard *et al.*, 1982; Hakalahti *et al.*, 2006). Furthermore, an increase in cercarial productivity to compensate increased mortality at high temperatures has been observed in warmer latitude areas, possibly affecting transmission from the molluscan host (16–20°C, Selbach and Poulin, 2020). Once active infective stages are released from molluscan host, the naturally spatio-temporal heterogeneity in cercarial and host densities might lead to variable encounter rates (Combes *et al.*, 1994; Thieltges and Reise, 2007). To maximize the number of infections, the total time that a group of cercariae remains active (and thus the energy allocation among them) might be different depending on their infection strategy. A random glycogen allocation would allow variable survival periods among cercariae when next hosts availability is unpredictable, resulting in a certain proportion of stages to remain active seeking for potential hosts while others remain latent/quiescent (Fenton and Hudson, 2002). The gradual increase in the activity loss and mortality of *Diplostomum* spp. in our study, similar to that of *Diplostomum spathaceum* at 20°C (Karvonen *et al.*, 2003), implies a homogeneous glycogen allocation between cercariae. Karvonen *et al.* (2003) suggested that since contact between infective stages and fish hosts is likely to be

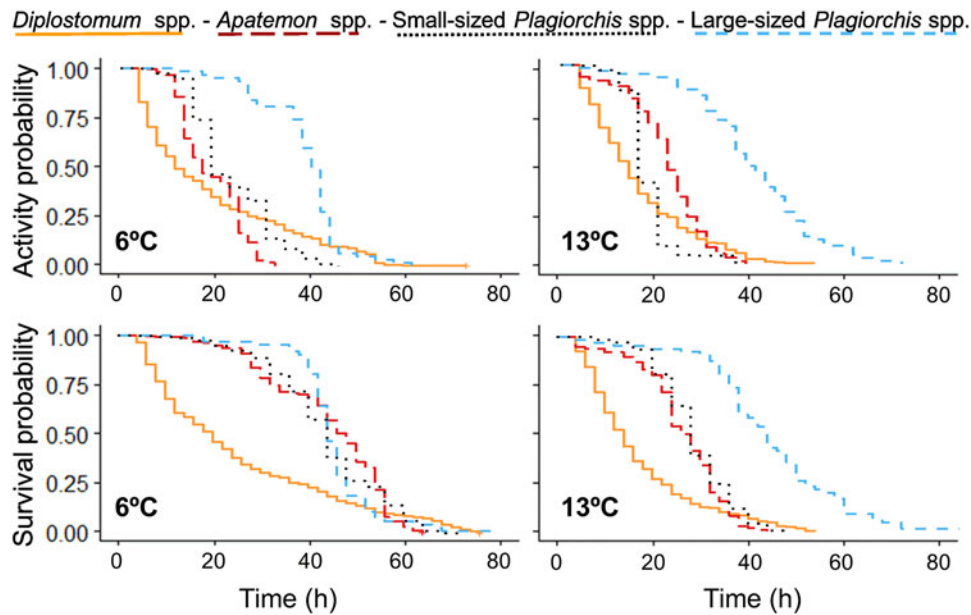


Fig. 2. Kaplan-Meier activity (top) and survival (bottom) curves for cercariae of four trematode taxa (*Diplostomum* spp., *Apatemon* spp., small- and large-sized *Plagiorchis* spp., differentiated by colours) incubated at 6 and 13°C. Censored data included in the statistical analyses are indicated by a cross at the end of the curve.

highly aggregated in both time and space due to fish shoaling behaviour, other aspects different to glycogen allocation, such as cercarial seasonal emergence, might be playing a role in cercarial active periods and longevity. Data on the emergence of cercariae would help to explore the existence of seasonal transmission windows in high-latitude areas, if increased emergence, activity and survival of cercariae happen to co-occur under warm or cold subarctic conditions.

Small-sized *Plagiorchis* spp. showed higher mortality at 13°C, however a large percentage of cercariae losing their activity during the first hours. This indicates that these individuals enter a passive stage very soon. The remaining active cercariae are likely those that will later successfully infect their next intermediate invertebrate hosts, as described for other trematodes (Lawson and Wilson, 1980), suggesting an unequal allocation of the energy reserves exploited during the summer months. Nevertheless, their activity loss was lower at the lower temperature, suggesting that this *Plagiorchis* morphotype might be overall more active at colder temperatures or in microhabitats with a more stable temperature, such as the bottom of the water column close to the benthic surface, where *Plagiorchis* spp. are usually distributed (Lowenberger and Rau, 1994).

Cercariae of large-sized *Plagiorchis* spp. exhibited similar activity loss and mortality patterns at both temperatures. The higher mortality during the first half of their lifespan at 13°C, followed by a later decreased activity loss and mortality, suggests that a higher number of cercariae remain alive and active for longer periods during warmer months. This is in accordance with the findings of Lo and Lee (1996), who showed that some species of cercariae do not follow the general trend of decreased survival at increased temperatures, thus pointing towards mortality as a consequence of the ageing process rather than the temperature itself. The steep changes in cercarial activity and survival curves of large-sized *Plagiorchis* spp., especially at 6°C, likely suggest an unequal allocation of the energy reserves among the group of cercariae. This may allow some to remain actively host seeking for a longer time, possibly as an adaptation to an unpredictable availability of their next invertebrate hosts (Fenton and Hudson, 2002).

The trematode taxa studied here overall showed a temperature-dependent response well adapted to subarctic conditions, allowing them to complete the life cycle even at low temperatures and thus

taking advantage of the transmission window during the 6-month ice-free period. The limited energy reserves, mainly concentrated in the main organ of propulsion (i.e. the tail; Lawson and Wilson, 1980), are likely depleted faster at increased temperatures, and thus is the activity. Hence, this supports the activity/survival trade-off (i.e. the longer active periods, the lower survival) suggested for other trematode species as well (Lawson and Wilson, 1980; Rea and Irwin, 1995; McCarthy, 1999b; Mouritsen, 2002) with the exception of small-sized *Plagiorchis* spp. during their most infective period.

Regarding the differences in cercarial activity loss and mortality among trematode taxa at warm and cold subarctic conditions, the differences between *Diplostomum* spp. and the other three trematode taxa remained similar at both temperatures. The changes in *Diplostomum* spp. activity and survival curves were overall more gradually occurring over time compared to other taxa (see Fig. 2).

The swimming behaviour of the furcocercariae of *Diplostomum* spp. was very different to that of bottom-dwelling monocercous cercariae of *Plagiorchis* spp. Therefore, the differences in activity loss and mortality rates may seem obvious, as both cercarial types follow different transmission strategies to locate and invade their next intermediate hosts (i.e. fish vs invertebrates, respectively; Lowenberger and Rau, 1994; Bell, 1996; Haas *et al.*, 2008; Soldánová *et al.*, 2017; see Fig. 1). However, *Diplostomum* spp. and *Apatemon* spp. furcocercariae share similar behaviour, alternating between resting and swimming periods that boost the cercariae into the water column, with *Diplostomum* spp. mostly occupying upper water column positions (Bell, 1996; Haas *et al.*, 2008). The unforeseen results showing differences in activity loss and mortality of both fish-infecting furcocercariae with much more gradual changes observed for *Diplostomum* spp. cercariae, lead to the assumption that variations in the relative duration of the active swimming and resting periods might be responsible for the inter-taxa differences among these two taxa. A reduction in the duration of active periods with cercarial age (while not active periods increase) has been previously reported, but exceptions have been also described (Chapman, 1974; Whitfield *et al.*, 1977; Rea and Irwin, 1995). The longer resting periods of *Diplostomum* spp. may allow a more constant utilization of energy reserves per time unit, thus maximizing their active

stage until their death. This would allow a gradual successful infection of fish over time, which might contribute to the higher infection intensity of *Diplostomum* spp. in sticklebacks from Takvatn compared to that of *Apatemon* spp. (mean intensity 30.4 vs 3.0, respectively; Born-Torrijos *et al.*, 2021). Additionally, the more gradual changes in activity loss and mortality increase of *Diplostomum* spp. compared to remaining taxa may reflect a dispersal advantage helping to disseminate cercariae and avoiding subsequent heavy parasite-related mortality in next intermediate hosts, as described for various trematode species (e.g. Evans and Gordon, 1983; Lowenberger and Rau, 1994).

Apatemon spp. and *Plagiorchis* spp. showed more similar activity loss and mortality rates among them, being the minor differences in their patterns likely due to their different swimming behaviour (i.e. intermittent swimming with brief resting periods of *Apatemon* spp. vs continuous and slow bottom-dwelling of *Plagiorchis* spp.), given that (i) furcocercariae swim faster than mono-tailed cercariae, and (ii) fish-infecting cercariae swim faster than those infecting invertebrates (Selbach and Poulin, 2018; Morley, 2020). The amount of glycogen reserves is also different between actively swimming and immobile cercariae (Ginetsinskaya, 1988). Whilst *Plagiorchis* spp. cercariae are not immobile, their displacement speed is much lower (Dixon, 1984; Lowenberger and Rau, 1994; Morley, 2020). This, together with their ability to modulate their swimming speed in close vicinity of their next intermediate hosts to facilitate infection (Morley, 2020), could result in lower energetic requirements.

The lack of the effect of cercarial body size on the response of individuals to temperature changes (Morley, 2011) could explain our observation that the two *Plagiorchis* spp. morphotypes showed similar activity loss and mortality patterns, despite the only negligible differences in activity loss rates in certain time sections. This could suggest that both morphotypes deplete their energy reserves in a similar way, independently of their size. The overall longer cercarial lifespan and active period of large-sized *Plagiorchis* spp., already reported for *Plagiorchis* species (10 days at 4°C and 90 h at 16°C, being infective during 38 and 18 h, respectively, Blankespoor, 1977), could thus simply reflect its larger size and likely larger energy resources, rather than the way it handles the energy. Nevertheless, it cannot be ruled out that the lack of large differences in activity loss and mortality patterns between *Plargiochis* morphotypes could be related to the existence of several lineages within each morphotype in high latitude areas (Soldánová *et al.*, 2017; Kudlai *et al.*, 2021), as different lineages could utilize divergent life cycles and transmission strategies, and thus activity loss and mortality patterns.

It is speculative whether the time of emergence might also play a role in cercarial mortality, as some cercariae emerge and actively search for their next intermediate hosts during specific times of the day to enhance the contact (Combes *et al.*, 1994). However, although cercariae of the studied genera have been frequently reported as diurnal- (*Diplostomum* spp., Haas *et al.*, 2008) or nocturnal-emerging (*Apatemon* spp., Bell, 1996; *Plagiorchis* spp., Lowenberger and Rau, 1994; but see diurnal-emerging *Plagiorchis* species in Gorman, 1980), trematodes in high latitude conditions could be highly adapted, similarly to marine species (Prokofiev *et al.*, 2016), by showing different emergence patterns to optimize their transmission to next suitable hosts. The interpretation of cercarial activity loss and mortality in combination with emergence data will enable to better understand the transmission dynamics of lacustrine trematodes in subarctic areas.

Conclusion

Our study shows highly dynamic temperature-dependent activity loss and mortality patterns of trematode transmission stages in

subarctic lakes that are likely playing a crucial role in shaping the parasite communities in these systems. Suggestively, these temperature-dependent responses represent adaptations to the short transmission window that allows a stable continuance of trematodes' life cycles during ice-free periods in high-latitude ecosystems. Whilst activity loss and mortality dynamics could not be divided into 'fish- vs invertebrate-infecting cercariae' groups, there is a taxa-specific response to temperature in relation to life-history traits, with swimming behaviour and energy allocation among cercariae likely being the main drivers of activity loss and mortality dynamics also in subarctic conditions. Since trematode population dynamics are influenced by both cercarial production, emergence and survival (Combes and Theron, 1981), further studies on cercarial emergence are needed to allow a more general understanding of the transmission ecology of trematode populations in high-latitude ecosystems, which are considered most vulnerable to climate change. Although further experimental infection studies should be performed to confirm the first sections as the most infective, the suggestion of those periods through the establishment of different time sections is an advantage of the presented activity and survival analyses.

Supplementary material. The supplementary material for this article can be found at <https://doi.org/10.1017/S0031182021002006>

Data. Data are available from the figshare repository (<https://doi.org/10.6084/m9.figshare.17091161.v1>, Born-Torrijos *et al.*, 2021).

Acknowledgements. We are grateful to Laina Dalsbø, Karin Strand Johannessen, Eirik Haugstvedt Henriksen (UiT The Arctic University of Norway), Hynek Mazanec (Biology Centre, Czech Academy of Sciences; University of South Bohemia in České Budějovice, Czech Republic) and Iveta Sekerášová (Charles University in Prague, Czech Republic) for their assistance during field sampling and experiments.

Author contributions.

A.B.-T. and M.S. conceived the ideas and designed methodology. A.B.-T., G.S.B., T.V., R.Kn., R.Kr., P.-A.A. and M.S. participated in samplings. A.B.-T., G.S.B., T.V. and M.S. performed the experimental work. A.B.-T. and G.S.B. statistically analysed the data. A.B.-T. wrote the first draft of the manuscript. All authors contributed critically to the drafts and gave final approval for the publication.

Financial support. Financial support was provided by Czech Science Foundation (A.B.-T., G.S.B., T.V., M.S., grant number 17-20936Y); and UiT The Arctic University of Norway and the Research Council of Norway (R.Kn., R.Kr., P.-A.A., grant number 213610).

Conflict of interest. None.

Ethical standards. Not applicable.

References

- Anderson RM and Whitfield PJ (1975) Survival characteristics of the free-living cercarial population of the ectoparasitic digenean *Transversotrema patialense* (Soparker, 1924). *Parasitology* **70**, 295–310
- Bell AS (1996) *Studies on the Biosystematics and Biology of Strigeids (Digenea) Parasitic in Freshwater Fish* (PhD thesis). University of Stirling, Scotland.
- Blankespoor HD (1977) Notes on the biology of *Plagiorchis noblei* Park, 1936 (Trematoda: Plachiorchiidae). *Proceedings of the Helminthological Society of Washington* **44**, 44–50.
- Born-Torrijos A, van Beest GS, Vyhldalová T, Knudsen R, Kristoffersen R, Amundsen PA, Thielges DW and Soldánová M (2021) Born-Torrijos *et al.* Data survival and activity analyses. figshare. Dataset. <https://doi.org/10.6084/m9.figshare.17091161.v1>
- Born-Torrijos A, Paterson R, van Beest GS, Vyhldalová T, Henriksen EH, Knudsen R, Kristoffersen R, Amundsen P-A and Soldánová M (2021) Cercarial behaviour alters the consumer functional response of three-spined sticklebacks. *Journal of Animal Ecology* **90**, 978–988.
- Brassard P, Curtis MA and Rau ME (1982) Seasonality of *Diplostomum spathaceum* (Trematoda: Strigeidae) transmission to brook trout

- (*Salvelinus fontinalis*) in northern Quebec, Canada. *Canadian Journal of Zoology* **60**, 2258–2263.
- Chapman HD** (1974) The behaviour of the cercariae of *Cryptocotyle lingua*. *Zeitschrift für Parasitenkunde* **44**, 211–226.
- Combes C and Theron A** (1981) Les densités cercariennes. *Memoires du Museum National d'Histoire Naturelle, Serie A, Zoologie* **119**, 186–196.
- Combes C, Fournier A, Mone H and Theron A** (1994) Behaviours in trematode cercariae that enhance parasite transmission: patterns and processes. *Parasitology* **109**, S3–S13.
- Crawley MJ** (2013) Survival analysis. In John Wiley & Sons Ltd (eds), *The R Book*. Chichester, UK: John Wiley & Sons Ltd, pp. 883–893.
- Dixon MD** (1984) *Strategies of Host Location Employed by Larval Trematodes* (PhD thesis), University of York, UK.
- Evans NA** (1985) The influence of environmental temperature upon transmission of the cercariae of *Echinostoma lei* (Digenea: Echinostomatidae). *Parasitology* **90**, 269–275.
- Evans NA and Gordon DM** (1983) Experimental studies on the transmission dynamics of cercariae of *Echinoparyphium recurvatum* (Digenea: Echinostomatidae). *Parasitology* **87**, 167–174.
- Fenton A and Hudson PJ** (2002) Optimal infection strategies: should macro-parasites hedge their bets? *Oikos* **96**, 92–101.
- Fingerut JT, Zimmer CA and Zimmer RK** (2003) Patterns and processes of larval emergence in an estuarine parasite system. *Biology Bulletin* **205**, 110–120.
- Galaktionov KV and Dobrovolskij AA** (2003) *The Biology and Evolution of Trematodes: An Essay on the Biology, Morphology, Life Cycles, Transmissions, and Evolution of Digenetic Trematodes*. Boston, Dordrecht & London: Kluwer Academic.
- Ganna A, Rivadeneira F, Hofman A, Uitterlinden AG, Magnusson PKE, Pedersen NL, Ingelsson E and Tiemeier H** (2013) Genetic determinants of mortality. Can findings from genome-wide association studies explain variation in human mortality? *Human Genetics* **132**, 553–561.
- Ginetsinskaya TA** (1988) *Trematodes, Their Life Cycles, Biology and Evolution*. New Delhi: Amerind.
- Gorman AM** (1980) *Studies on the Biology of Plagiatorchis elegans (Rudolphi, 1802), (Trematoda: Digenea) in its Mammalian and Molluscan-Hosts* (PhD thesis), University of Leeds, UK.
- Haas W, Beran B and Loy C** (2008) Selection of the hosts' habitat by cercariae: from laboratory to the field. *Journal of Parasitology* **94**, 1233–1238.
- Hakalahti T, Karvonen A and Valtonen ET** (2006) Climate warming and disease risks in temperate regions – *Argulus coregoni* and *Diplostomum spathaceum* as case studies. *Journal of Helminthology* **80**, 93–98.
- Halttunen E, Gjelland K-Ø, Hamel S, Serra-Llinares RM, Nilsen R, Arechavala-Lopez P, Skarðhamar J, Johnsen IA, Asplin L, Karlsen Ø, Bjørn P-A and Finstad B** (2017) Sea trout adapt their migratory behaviour in response to high salmon lice concentrations. *Journal of Fish Diseases* **41**, 953–967.
- Karvonen A, Paukku S, Valtonen ET and Hudson PJ** (2003) Transmission, infectivity and survival of *Diplostomum spathaceum* cercariae. *Parasitology* **127**, 217–224.
- Karvonen A, Kirsi S, Hudson PJ and Valtonen ET** (2004) Patterns of cercarial production from *Diplostomum spathaceum*: terminal investment or bet hedging? *Parasitology* **129**, 87–92.
- Koprivnikar J, Lim D, Fu C and Brack SHM** (2010) Effects of temperature, salinity, and pH on the survival and activity of marine cercariae. *Parasitology Research* **106**, 1167–1177.
- Kudlai O, Pantoja C, O'Dwyer K, Jouet D, Skirnisson K and Faltýnková A** (2021) Diversity of *Plagiatorchis* (Trematoda: Digenea) in high latitudes: species composition and snail host spectrum revealed by integrative taxonomy. *Journal of Zoological Systematics and Evolutionary Research* **59**, 937–962.
- Kutz SJ, Jenkins EJ, Veitch AM, Ducrocq J, Polley L, Elkin B and Lair S** (2009) The Arctic as a model for anticipating, preventing, and mitigating climate change impacts on host-parasite interactions. *Veterinary Parasitology* **163**, 217–228.
- Lawson JR and Wilson RA** (1980) The survival of the cercariae of *Schistosoma mansoni* in relation to water temperature and glycogen utilization. *Parasitology* **81**, 337–348.
- Lo CT and Lee KM** (1996) Pattern of emergence and the effects of temperature and light on the emergence and survival of heterophyid cercariae (*Centrocestus formosanus* and *Haplorchis pumilio*). *Journal of Parasitology* **82**, 347–350.
- Lowenberger CA and Rau ME** (1994) *Plagiatorchis elegans*: emergence, longevity and infectivity of cercariae, and host behavioural modifications during cercarial emergence. *Parasitology* **109**, 65–72.
- Lyholt HCK and Buchmann K** (1996) *Diplostomum spathaceum*: effects of temperature and light on cercarial shedding and infection of rainbow trout. *Diseases of Aquatic Organisms* **25**, 169–173.
- Mas-Coma S, Valero MA and Bargues MD** (2009) Climate change effects on trematodiasis, with emphasis on zoonotic fascioliasis and schistosomiasis. *Veterinary Parasitology* **163**, 264–280.
- McCarthy AM** (1999a) Photoperiodic cercarial emergence patterns of the digeneans *Echinoparyphium recurvatum* and *Plagiatorchis* sp. from a mixed infection in *Lymnaea peregra*. *Journal of Helminthology* **73**, 59–62.
- McCarthy AM** (1999b) The influence of temperature on the survival and infectivity of the cercariae of *Echinoparyphium recurvatum* (Digenea: Echinostomatidae). *Parasitology* **118**, 383–388.
- Morley NJ** (2011) Thermodynamics of cercarial survival and metabolism in a changing climate. *Parasitology* **138**, 1442–1452.
- Morley NJ** (2012) Cercariae (Platyhelminthes: Trematoda) as neglected components of zooplankton communities in freshwater habitats. *Hydrobiologia* **691**, 7–19.
- Morley NJ** (2020) Cercarial swimming performance and its potential role as a key variable of trematode transmission. *Parasitology* **147**, 1369–1374.
- Mouritsen KN** (2002) The *Hydrobia ulvae*–*Maritrema subdolum* association: influence of temperature, salinity, light, water-pressure and secondary host exudates on cercarial emergence and longevity. *Journal of Helminthology* **76**, 341–347.
- Muñoz-Antolí C, Trellis M, Espert A, Toledo R and Esteban JG** (2002) Survival and infectivity of *Echinostoma friedi* (Trematoda: Echinostomatidae) miracidia and cercariae under experimental conditions. *Helminthologia* **39**, 149–154.
- Nikolaev KE, Levakin IA and Galaktionov KV** (2020) Seasonal dynamics of trematode infection in the first and the second intermediate hosts: a long-term study at the subarctic marine intertidal. *Journal of Sea Research* **164**, 101931.
- Pechenik JA and Fried B** (1995) Effect of temperature on survival and infectivity of *Echinostoma trivolvis* cercariae: a test of the energy limitation hypothesis. *Parasitology* **111**, 373–378.
- Pietrock M and Marcogliese DJ** (2003) Free-living endohelminth stages: at the mercy of environmental conditions. *Trends in Parasitology* **19**, 293–299.
- Poulin R** (2006) Global warming and temperature-mediated increases in cercarial emergence in trematode parasites. *Parasitology* **132**, 143–151.
- Prokofiev VV** (1999) Influence of temperature and salinity on a life span of cercariae of marine littoral trematodes *Cryptocotyle* sp. (Heterophyidae), *Levinseniella brachysoma* and *Maritrema subdolum* (Microphallidae). *Parazitologiya* **33**, 520–526 (in Russian).
- Prokofiev VV** (2001) Influence of temperature and salinity on a life span of cercariae of marine littoral trematodes *Podocotyle atomon* (Opocoealidae) and *Renicola thaidus* (Renicolidae). *Parazitologiya* **35**, 69–76 (in Russian).
- Prokofiev VV, Galaktionov KV and Levakin IA** (2016) Patterns of parasite transmission in polar seas: daily rhythms of cercarial emergence from intertidal snails. *Journal of Sea Research* **113**, 85–98.
- R Core Team** (2017) *R: A Language and Environment for Statistical Computing*. Vienna, Austria: R Foundation for Statistical Computing. Available at <https://www.r-project.org/>.
- Rea JG and Irwin SWB** (1995) The effects of age, temperature and shadow stimuli on activity patterns of the cercariae of *Cryptocotyle lingua* (Digenea: Heterophyidae). *Parasitology* **111**, 95–101.
- Selbach C and Poulin R** (2018) Parasites in space and time: a novel method to assess and illustrate host-searching behaviour of trematode cercariae. *Parasitology* **145**, 1469–1474.
- Selbach C and Poulin R** (2020) Some like it hotter: trematode transmission under changing temperature conditions. *Oecologia* **194**, 745–755.
- Soldánová M, Georgieva S, Roháčková J, Knudsen R, Kuhn JA, Henriksen EH, Siwertsson A, Shaw JC, Kuris AM, Amundsen P-A, Scholz T, Laffey KD and Kostadinova A** (2017) Molecular analyses reveal high species diversity of trematodes in a sub-Arctic lake. *International Journal for Parasitology* **47**, 327–345.
- Studer A and Poulin R** (2013) Cercarial survival in an intertidal trematode: a multifactorial experiment with temperature, salinity and ultraviolet radiation. *Parasitology Research* **112**, 243–249.
- Studer A and Poulin R** (2014) Analysis of trait mean and variability versus temperature in trematode cercariae: is there scope for adaptation to global warming? *International Journal for Parasitology* **44**, 403–413.

- Studer A, Thieltges DW and Poulin R** (2010) Parasites and global warming: net effects of temperature on an intertidal host–parasite system. *Marine Ecology Progress Series* **415**, 11–22.
- Therneau T** (2020) A package for survival analysis in R. R package version 3.1-11. Available at <https://CRAN.R-project.org/package=survival>.
- Thieltges DW and Reise K** (2007) Spatial heterogeneity in parasite infections at different spatial scales in an intertidal bivalve. *Oecologia* **150**, 569–581.
- Thieltges DW and Rick J** (2006) Effect of temperature on emergence, survival and infectivity of cercariae of the marine trematode *Renicola roscovita* (Digenea: Rencolidae). *Diseases of Aquatic Organisms* **73**, 63–68.
- Thieltges DW, Jensen KT and Poulin R** (2008) The role of biotic factors in the transmission of free-living endohelminth stages. *Parasitology* **135**, 407–426.
- van Beest GS, Villar-Torres M, Raga JA, Montero FE and Born-Torrijos A** (2019). In vivo fluorescent cercariae reveal the entry portals of *Cardiocephaloides longicollis* (Rudolphi, 1819) Dubois, 1982 (Strigeidae) into the gilthead seabream *Sparus aurata* L. *Parasites & Vectors* **12**, 92.
- Whitfield PJ, Anderson RM and Bundy DAP** (1977) Experimental investigations on the cercariae of an ectoparasitic digenean *Transversotrema patialense*: general activity patterns. *Parasitology* **75**, 7–30.