



Spatial and Temporal Control of Murine Melanoma Initiation from Mutant Melanocyte Stem Cells

Hyeongsun Moon^{*,1}, Leanne R. Donahue^{*,1}, Dahihm Kim¹, Luye An¹, Andrew C. White¹

¹Department of Biomedical Sciences, Cornell University

Abstract

Cutaneous melanoma is well known as the most aggressive skin cancer. Although the risk factors and major genetic alterations continue to be documented with increasing depth, the incidence rate of cutaneous melanoma has shown a rapid and continuous increase during recent decades. In order to find effective preventative methods, it is important to understand the early steps of melanoma initiation in the skin. Previous data has demonstrated that follicular melanocyte stem cells (MCSCs) in the adult skin tissues can act as melanoma cells of origin when expressing oncogenic mutations and genetic alterations. Tumorigenesis arising from melanoma-prone MCSCs can be induced when MCSCs transition from a quiescent to active state. This transition in melanoma-prone MCSCs can be promoted by the modulation of either hair follicle stem cells' activity state or through extrinsic environmental factors such as ultraviolet-B (UV-B). These factors can be artificially manipulated in the laboratory by chemical depilation, which causes transition of hair follicle stem cells and MCSCs from a quiescent to active state, and by UV-B exposure using a benchtop light. These methods provide successful spatial and temporal control of cutaneous melanoma initiation in the murine dorsal skin. Therefore, these *in vivo* model systems will be valuable to define the early steps of cutaneous melanoma initiation and could be used to test potential methods for tumor prevention.

Keywords

Cancer Research; Issue 148; cutaneous melanoma; cancer; skin; melanocyte stem cells; hair follicle stem cells; depilation; ultraviolet-B

Introduction

Melanoma, the malignant form of melanocytic tumors, is the most aggressive cancer in the skin with cutaneous melanoma responsible for the majority of skin cancer deaths¹. In the United States, melanoma is commonly diagnosed; it is projected to be the 5th to 6th most common cancer type among the estimated new cancer cases in 2018². Furthermore,

Correspondence to: Andrew C. White at acw93@cornell.edu.

*These authors contributed equally

Video Link

The video component of this article can be found at <https://www.jove.com/video/59666/>

Disclosures

The authors declare no conflict of interest.

while overall cancer incidences have shown the trend of gradual reduction in recent decades, cutaneous melanoma incidence rates during the last few decades demonstrate a continuous and rapid increase in both genders².

To combat cutaneous melanoma more efficiently, it is important to clearly understand the early events of melanoma development from their cells of origin to better identify clinically effective preventative methods. It is now known that adult stem cells can significantly contribute to tumor formation as the cellular origins of cancers in many different types of organs including skin tissues^{3,4,5}. Similarly, adult melanocyte stem cells (MCSCs) in the murine dorsal skin can work as melanoma cells of origin upon aberrant activation of the *Ras/Raf* and *Akt* pathways⁶. However, these oncogenic mutations alone are not able to efficiently induce tumor formation from quiescent MCSCs. Melanocytic tumors eventually develop when MCSCs become active during natural hair cycling. However, in this protocol, we will describe methods to artificially induce cellular activation of tumor-prone MCSCs, thus facilitating precise control of melanoma initiation^{6,7}.

Through the methods described here, spatial and temporal control of cutaneous melanoma initiation from tumor-prone MCSCs expressing oncogenic *Braf*^{V600E} together with loss of *Pten* expression can be successfully performed, as we have previously reported⁶. This method incorporates previous findings that demonstrate hair follicle stem cell activation through depilation as well as how exposure of murine skin to UV-B can facilitate activation of MCSCs resident to the hair follicle and translocation of this cellular subpopulation to the interfollicular epidermis^{6,8,9,10}. These in vivo model systems can provide valuable information regarding how physiological and environmental changes can alter the cellular status of melanoma-prone MCSCs, which in turn can induce significant initiation of melanoma in the skin.

Protocol

All animal procedures are performed in accordance with Cornell University Institutional Animal Care and Use Committee (IACUC).

1. Preparation

1. Collect tail clips from 12 day postnatal mice and digest in 400 μ L of 0.05 N NaOH at 95 °C for 1 h. Vortex and add 32 μ L of 1 M Tris-HCl, pH 7. Genotype mice according to PCR protocols provided through the Jackson Laboratory and identify mice with genotype of interest⁶.
 - *Tyr-CreER* – hemizygous (+/*CreER*)
 - *LSL-Braf*^{V600E} – heterozygous (+/*LSL-V600E*)
 - *Pten* – homozygous flox (*flox/flox*)
 - *LSL-tdTomato* – hemizygous (+/*LSL-tdTomato*)

NOTE: Primer sequences are provided in Table of Materials.

2. Use a hair clipper (electric trimmer) to shave the dorsal skin 2 to 3 days before all experiments described below, and when mice are approximately 7 weeks of age. Take care not to damage the thin mouse skin using the electric trimmer as any injury may elicit a wound healing response which will activate hair follicle stem cells, including MCSCs.
3. Determine if the hair cycle is in telogen and whether the skin is wounded during the waiting period. If the skin shows any sign of injury, the mouse should not be used for these procedures.

NOTE: Although the hair cycle may slightly differ between genetic backgrounds, at this age the hair cycle in the dorsal skin is usually in the telogen state¹¹. The *Tyr-CreER* transgene will target MCSCs in telogen skin, and the subsequent genetic alterations will be permanently expressed in all lineages of the MCSC, including differentiated melanocytes and melanocytic tumors.

2. Tamoxifen Treatment for Cre-Lox genetic Recombination

1. Preparation of tamoxifen for intraperitoneal injection (IP) or topical administration for systemic or localized genetic recombination

NOTE: In order for tamoxifen to induce recombination, it must first be metabolized by the liver to 4-hydroxytamoxifen (4-OHT), which can bind to and activate the *CreER*. Topical application of tamoxifen will not be metabolized in this way and 4-OHT must directly be used. Only one method of tamoxifen delivery is required for sufficient recombination.

1. Tamoxifen: Prepare tamoxifen at a concentration of 10 mg mL⁻¹ dissolved in corn oil. To aid in the dissolution of the drug into solution, add up to 10% total volume of 100% molecular grade ethanol to the drug in powder form, vortex for 3 min and then add remaining volume of corn oil. Continue to vortex until crystalline material is no longer apparent in solution. Tamoxifen solution can be sterilized by passing through a 0.2 µm filter. Proceed to step 2.2.1 for treatment.
2. 4-OHT: Prepare a stock solution of hydroxytamoxifen up to 3 mg mL⁻¹ in 100% ethanol. Then, a working solution can be applied as much as needed to cover the skin area of interest (generally a single application).

NOTE: A stock solution of hydroxytamoxifen can be dissolved in 100% ethanol for a final concentration of 5 mM. Then, to prepare a working solution, 5 µL of 4OH-tamoxifen stock solution can be diluted into 15 µL of 100% ethanol. For 4 mm² area, 1 to 3 µL of working solution can be topically applied.

2. Treating mice with tamoxifen either systemically or topically
 1. For systemic treatment, administer 2 mg of tamoxifen via IP injection once daily for 3 days using a 26 G needle.

NOTE: Using this model, approximately $93\% \pm 4\%$ of quiescent MCSCs are labeled with tdTomato⁶.

2. For regional activation, perform one topical treatment with 4-OHT. Cover the skin area of interest with the working solution. The amount of working solution can be determined by the size of region of interest as described in step 2.1.2.
3. At 48 h following the last dose of tamoxifen, proceed to step 3 for chemical depilation induced tumor initiation or to step 4 for UV-B induced tumor initiation

3. Chemical Depilation

1. Equip a mouse treatment room containing an isoflurane system with the following required materials: hair removal cream, cottons swabs, paper cloth, and water.
2. Place the mouse into the induction chamber and anesthetize with 3.5 to 4.5% isoflurane and 1 L/min oxygen.
3. Once the respiratory rate has stabilized, confirm that the mouse is in the proper plane of anesthesia by performing a toe pinch and transfer the mouse to the main tube maintaining anesthesia with 1 to 1.5% isoflurane and 1 L/min oxygen. Apply eye ointment to keep the eyes from drying while under anesthesia.
4. Use a cotton swab to apply a thin layer of hair removal cream to the shaved region of the mouse skin.
5. Once the cream has been evenly applied, use clean cotton swabs to begin removal. The total time that the cream is in contact with the skin should not exceed 1 min.
6. Gently wipe the skin with a damp paper cloth and ensure that any residual cream has been removed.

NOTE: Hair removal cream can cause irritation to the skin if it is not completely removed. Some mice, such as those on a C57BL/6 background, can be prone to developing dermatitis¹². Although rare, some animals will develop dermatitis within 24 h after hair removal cream application or mechanical depilation. Make sure to check the mice the day after treatment to look for any signs of regional skin irritation.

7. Discard the removed hair shafts and any materials used into a biohazard bin.
8. Place the mouse into an empty, clean mouse cage until the anesthesia has worn off.
9. Return the mice to their cages.

4. UV-B Irradiation

1. Equip a mouse treatment room containing an isoflurane system with the following required materials: UV-B light system, UV-B light meter, protective

covering for the mouse, additional UV-B protective PPE for researcher, and a timer.

2. Mice should be irradiated at the UV-B dose of interest (i.e., 0–180 mJ/cm²). Use the UV-B light meter to determine the appropriate length of time to irradiate the mice.

NOTE: mW/cm² × time = dose

3. Anesthetize the mouse with isoflurane. While in the induction chamber, use 3.5 to 4.5% isoflurane and 1 L/min oxygen.
4. Once the mouse is stabilized, confirm anesthesia effects with a toe pinch and transfer the mouse to the main anesthesia tube located in UV chamber. Apply eye ointment to prevent the eyes from drying while under anesthesia. Maintain anesthesia with 1 to 1.5% isoflurane and 1 L/min oxygen.
5. Cover the dorsal skin with UV-B protective material so that only the desired region will be exposed.

NOTE: At this time, appropriate PPE should be utilized. The length of time needed to irradiate the mouse is dependent on the intensity of the light bulb used, but anesthesia may need to be monitored if the required time exceeds 30 s.

6. Cover the UV chamber using UV-resistant lid or any other suitable materials.
7. Turn on the UV-B lamp and irradiate the mouse for the time determined by researchers for the specific aim.
8. Turn off the UV system and isoflurane, then place the mouse to an empty mouse cage until the anesthesia has worn off.
9. Return the mice to their cages.

5. Tissue Processing

1. Skin isolation

1. Obtain the following prior to starting: necropsy instruments, filter paper and paper towels.
2. Euthanize the mice according to IACUC approved protocols, and confirm death prior to proceeding.
3. Using a hair clipper, shave any hair from the dorsal skin area. Lightly brush the area with a lint free tissue to clear the area.
4. Make a small incision with sharp scissors just above the base of the tail.
5. Insert large blunt scissors into the incision and separate the subdermal connective tissues.
6. Carefully isolate the skin region of interest by cutting with sharp scissors along the edge of the tissue.

7. Place the skin tissue onto a clean paper towel and use dull forceps to stretch the skin so that it adheres to the towel and is taught. This step serves to provide additional support for the tissue so that it can be manipulated and processed while maintaining its shape.

NOTE: Be careful to only handle the outside regions of the skin tissue, as the forceps may cause damage to the skin which can be seen histologically.

2. Tissue fixation

1. Fold a piece of filter paper in half and label appropriately. Place the skin along with paper towel backing into the folded paper immediately adjacent to the crease, ensuring that the sample is smooth and not folded or crumpled. Seal the filter paper by stapling the open sides, and then trim so that the remaining paper can be used for future samples.

NOTE: This step is performed so that the skin retains its shape during fixation.

2. Fully submerge the tissue sample in 10% neutral buffered formalin for 3 to 5 h at room temperature or overnight at 4 °C.
3. Following fixation, remove the samples from formalin, wash in deionized water (2x, 5 min each) and proceed to make tissue blocks. Carefully remove any residual material from the skin tissue (i.e., residual paper).

3. Making frozen tissue blocks (Figure 1)

1. Trim the edges of the skin sample so that they are not jagged and then make 3 sagittal cuts. The width of these strips should not be more than the height of the cryomold (5 mm). Next, make transverse cuts to have pieces of skin which are not longer than the width of the cryomold (20 mm) and can be embedded. Repeat with the remaining half of dorsal skin, or save the tissue for other uses (alternately, save half prior to fixation).

NOTE: It's important to keep skin pieces in proper orientation.

2. Orient the cryomold ($25 \times 20 \times 5 \text{ mm}^3$) in a portrait orientation and place 4 to 5 pieces of skin on top of the OCT. Once all pieces are in place, use 2 pairs of fine forceps to bring the long edge of skin to the bottom of the cryomold. Skin should now be standing up in the OCT perpendicular to the base of the mold. Take care to minimize formation of air pockets within the OCT during this step (Figure 1).
3. Fill the mold with OCT to the second lip, and place on the flat surface of dry ice. Use forceps to adjust any skin pieces that may have shifted during transfer as the block begins to freeze. Once the bottom layer is solidified, manipulation of tissues will be impossible.
4. Cut 8–10 μm slides for analysis.

4. Making Formalin Fixed Paraffin Embedded (FFPE) tissue blocks

1. Place 2 pieces of fixed skin into a labeled cassette and dehydrate in increasing concentrations of ethanol (75% ethanol for 30 min, 85% for 30 min, 90% for 30 min, 95% for 30 min, 100% for 2× 30 min, Xylene or xylene substitute for 2× 30 min). Incubate with Paraffin at 58–60°, first for 30 min, and then overnight.
2. Embed the tissue in a 24 × 24 mm² stainless steel tissue mold with liquid paraffin and solidify at –5 °C. The tissue orientation should be similar to that of frozen tissue blocks so that longitudinal sections across multiple hair follicles can be visualized (Figure 1).
3. Once the paraffin has solidified, remove the mold and cut into 5–10 μm sections for analysis.

Representative Results

Cutaneous melanoma initiation induced by chemical depilation

The procedure of chemical depilation is depicted in Figure 2. When mice are 7-weeks postnatal, their dorsal skin is in telogen. During telogen, hair follicle stem cells and MCSCs are known to be in a quiescent, resting state. The skin should show no significant hair growth after shaving. On the other hand, chemical depilation can induce hair follicle stem cell activation, which in turn shows significant hair growth from the region of interest (Figure 2). Similarly, tumor-prone MCSCs expressing oncogenic mutations also need to be active for accelerated tumor formation. Chemical depilation can significantly induce the activation of both hair follicle stem cell and MCSCs. Melanoma-prone MCSCs in an active state can form tumors, and microscopic melanoma initiation can be observed within 2 weeks after chemical depilation using the lineage tracing allele *LSL-tdTomato* (Figure 3).

Cutaneous melanoma initiation induced by UV-B irradiation

Similar to chemical depilation, UV-B can induce tumor initiation from quiescent tumor-prone MCSCs (Figure 4). While the murine skin containing tumor-prone MCSCs in a quiescent state shows no significant tumor initiation and lack of significant pigmentation, the dorsal skin exposed to UV-B (twice, 180 mJ/cm²) shows black pigmented early melanocytic tumors which are macroscopically evident (Figure 4A, B). While UV-B can significantly induce macroscopically evident tumor initiation within 2 weeks, the application of sunscreen can protect UV-B-mediated melanoma initiation in the skin, similar to a UV-resistant cloth (Figure 4C, D).

Importantly, UV-B induces the direct translocation of MCSCs from their follicular stem cell niche to the interfollicular epidermis. Furthermore, UV-B can induce MCSC-originating cutaneous melanoma formation throughout the interfollicular epidermis, and the microscopic phenotype can be observed by the lineage tracing marker, tdTomato (Figure 5). As these tumor cells are malignant, they grow rapidly and invasively (Figure 5). Similar to the dorsal skin, UV-B-induced melanoma initiation can be notably observed in other skin areas, such as the ear skin (Figure 6). Compared to the control skin covered by UV-resistant

cloth, the ear skin exposed to UV-B demonstrates higher pigmentation due to a higher burden of melanoma initiation (Figure 6).

Discussion

Hallmark genetic alterations frequently found in cutaneous melanoma tumors have been well described¹³. The most dominant driver mutation is *Braf*^{V600E}, and a genetically engineered mouse model for *Braf*^{V600E}-mediated melanoma was generated by the Bosenberg group¹⁴ and deposited in the Jackson Laboratory. Using this mouse model, our recent study demonstrated the requirement of cellular activation of tumor-prone MCSCs for the significant initiation of *Braf*^{V600E}-mediated melanoma in the dorsal skin⁶.

Depilation is known to be an effective method to induce murine hair follicle stem cell activation on the dorsal skin^{6,10}. Murine MCSCs are located within the hair follicles, and furthermore, the cellular status of follicular MCSCs is synchronized with the state of hair follicle stem cells⁸. Artificial modulation of hair follicle stem cells can alter MCSC status, thus depilation can directly activate both melanocyte and hair follicle stem cells. This activation method for MCSCs can be applied for tumor-prone MCSCs to examine early steps of cutaneous melanoma initiation in genetically engineered melanoma mouse models. Through a chemical depilation method, melanoma formation in the region of interest in the murine dorsal skin can be directly initiated. Depilation can be performed by various methods such as waxing or plucking, both of which are types of mechanical hair removal where hair shafts are extracted from the hair follicle. However, these mechanical depilation methods can be imprecise with respect to a specific region of interest. On the other hand, a chemical depilation method using hair removal cream is simple to perform and allows for precise application with reliable activation of the hair cycle, and may be less harsh on the skin than mechanical removal.

Among various risk factors, UV-B is the most well-known risk factor in cutaneous melanoma¹⁵. UV-B irradiation is known to induce the direct migration of follicular MCSCs into the interfollicular epidermis⁹. Furthermore, UV-B is a strong environmental stressor which can significantly induce melanoma initiation from tumor-prone MCSCs⁶. In the experimental protocol described above, a small region of interest on the murine dorsal skin can be exposed to UV-B light while the use of a UV resistant cloth easily protects the rest of the mouse from unwanted exposure. This treatment can be performed while the mouse is under anesthesia. Importantly, the migration of MCSCs and formation of MCSC-originating melanoma following UV-B exposure are UV-B-dose dependent⁶. Therefore, to have successful results, it is important to regularly check the intensity of light bulb using a UV-B meter and adjust the exposure time and distance between the skin and light bulbs as needed. As is generally known, the skin can burn in response to a high dose of UV-B light, but weak UV-B exposure is also detrimental to the experiment as it will be insufficient to induce MCSC-originating melanoma.

The protocol described here primarily focuses on the environmental risk factor, UV-B, in the dorsal skin. However, the experimental protocol above can be applied to different aims. For instance, the protocol can be modified with light bulbs of differing spectrums to determine

the effect of alternative light sources or wavelengths of UV, such as UV-A. This protocol primarily targeted the dorsal skin as it is accessible and the status of MCSCs is well defined. However, it can also be altered to target UV light exposure to appendages such as the ear, tail or palm skin, including foot pads. As an example, in Figure 6, it is possible to examine possible difference in early melanocytic tumor formation at alternative tissue sites. However, unlike the dorsal skin, the status of MCSCs in these sites are less well defined; hence, the potential spontaneous activation of MCSCs leading to random occurrences of melanoma formation should be considered. Therefore, compared to the protocol in the dorsal skin, alternative approaches will require an increased number of experiments to obtain accurate experimental results.

Furthermore, while the current protocol primarily demonstrates *Braf*^{V600E}-mediated melanoma initiation, our previous study also reported similar early melanoma formation with an oncogenic *Ras/Pten* combination, using the *LSL-Kras*^{G12D} genetic allele⁶. However, other driver mutations such as mutant *Nras* genes can also be considered with the experimental system described here to understand early melanoma initiation driven by other oncogenic combinations.

Taken together, described here is an in vivo model system which allows for the examination of early cutaneous melanoma initiation in genetically engineered mice. These murine models provide the methods for temporal and spatial control of melanoma initiation from mutant MCSCs in the skin. These protocols provide a novel paradigm to study the mechanisms of early melanoma initiation from tumor-prone MCSCs as well as a platform to determine the physiological and environmental stressors that can contribute to melanoma initiation. This level of spatiotemporal control can also provide a tool for more precise melanoma induction to test drug efficacy in preventing melanoma formation, as well as tumor growth.

Acknowledgments

This work was supported by the Office of the Assistant Secretary of Defense for Health Affairs, through the Peer Reviewed Cancer Research Program under award W81XWH-16-1-0272. Opinions, interpretations, conclusions, and recommendations are those of the authors and are not necessarily endorsed by the Department of Defense. This work was also supported by a seed grant from the Cornell Stem Cell Program to A.C. White. H. Moon was supported by the Cornell Center for Vertebrate Genomics Scholar Program.

References

1. Wernli KJ, Henrikson NB, Morrison CC, Nguyen M, Pocobelli G, & Blasi PR Screening for skin cancer in adults: updated evidence report and systematic review for the US preventive services task force. *The Journal of the American Medical Association*. 316 (4), 436–447 (2016). [PubMed: 27458949]
2. Siegel RL, Miller KD, & Jemal A Cancer statistics, 2018. *CA: A Cancer Journal for Clinicians*. 68 (1), 7–30 (2018). [PubMed: 29313949]
3. White AC, & Lowry WE Refining the role for adult stem cells as cancer cells of origin. *Trends in Cell Biology*. 25 (1), 11–20 (2015). [PubMed: 25242116]
4. Moon H, Donahue LR, & White AC Understanding cancer cells of origin in cutaneous tumors. *Cancer Stem Cells*. , 263–284 (2016).
5. Blanpain C Tracing the cellular origin of cancer. *Nature Cell Biology*. 15 (2), 126–134 (2013). [PubMed: 23334500]

6. Moon H, Donahue LR, et al. Melanocyte stem cell activation and translocation initiate cutaneous melanoma in response to UV exposure. *Cell Stem Cell*. 21 (5), 665–678.e6 (2017). [PubMed: 29033353]
7. Moon H, & White AC A path from melanocyte stem cells to cutaneous melanoma illuminated by UVB. *Molecular & Cellular Oncology*. 5 (2), e1409864 (2018). [PubMed: 29487896]
8. Rabbani P, Takeo M, et al. Coordinated activation of Wnt in epithelial and melanocyte stem cells initiates pigmented hair regeneration. *Cell*. 145 (6), 941–955 (2011). [PubMed: 21663796]
9. Chou WC, Takeo M, et al. Direct migration of follicular melanocyte stem cells to the epidermis after wounding or UVB irradiation is dependent on Mc1r signaling. *Nature Medicine*. 19 (7), 924–929 (2013).
10. Keyes BE, Segal JP, et al. Nfatc1 orchestrates aging in hair follicle stem cells. *Proceedings of the National Academy of Sciences of the United States of America*. 110 (51), E4950–9 (2013). [PubMed: 24282298]
11. Müller-Röver S, Handjiski B, et al. A comprehensive guide for the accurate classification of murine hair follicles in distinct hair cycle stages. *The Journal of Investigative Dermatology*. 117 (1), 3–15 (2001). [PubMed: 11442744]
12. Kastenmayer RJ, Fain MA, & Perdue KA A retrospective study of idiopathic ulcerative dermatitis in mice with a C57BL/6 background. *Journal of the American Association for Laboratory Animal Science : JAALAS*. 45 (6), 8–12 (2006).
13. Vultur A, & Herlyn M SnapShot: melanoma. *Cancer Cell*. 23 (5), 706–706.e1 (2013). [PubMed: 23680152]
14. Dankort D, Curley DP, et al. Braf(V600E) cooperates with Pten loss to induce metastatic melanoma. *Nature Genetics*. 41 (5), 544–552 (2009). [PubMed: 19282848]
15. Viros A, Sanchez-Laorden B, et al. Ultraviolet radiation accelerates BRAF-driven melanomagenesis by targeting TP53. *Nature*. 511 (7510), 478–482 (2014). [PubMed: 24919155]

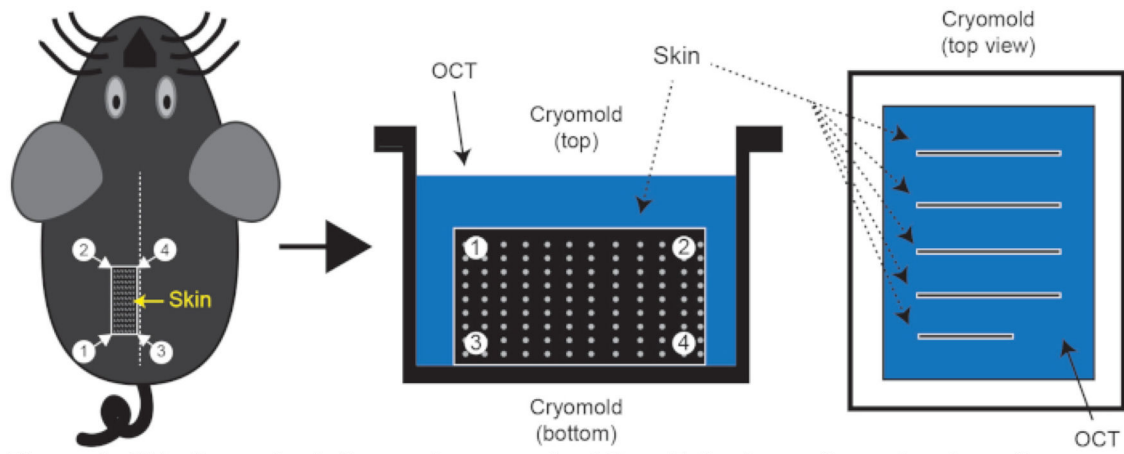


Figure 1: Skin tissue isolation and cryo-embedding.

Following euthanasia, shave the mouse dorsal skin region of interest and embed skin in cryomold containing OCT. The dotted line on the mouse represents the midline. Typically, 3 or 4 pieces of skin can be isolated with line segment 3–4 along the midline; one such piece is indicated by rectangle 1/2/3/4. These skin pieces should be embedded in the OCT as shown in the figure.

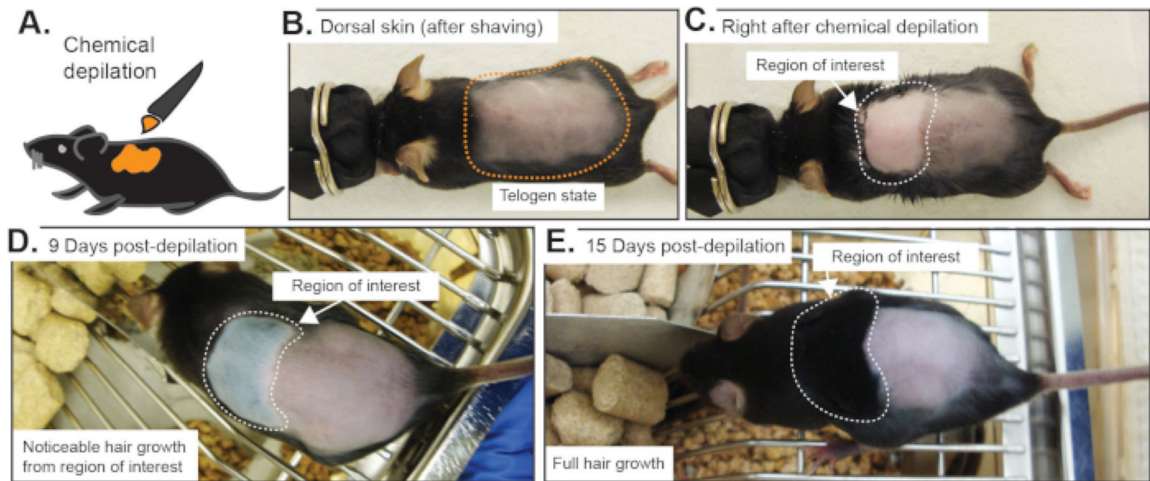


Figure 2: Macroscopic phenotypes after chemical depilation.

(A) Diagram of chemical depilation. (B) After shaving, the hair cycle was confirmed to be in telogen. (C) Chemical depilation was performed to remove hair shafts from the hair follicles, which can activate both hair follicle and melanocyte stem cells. (D) Around a week later, early hair growth will be easily noticeable. (E) Then, significant hair growth can be observed over time.

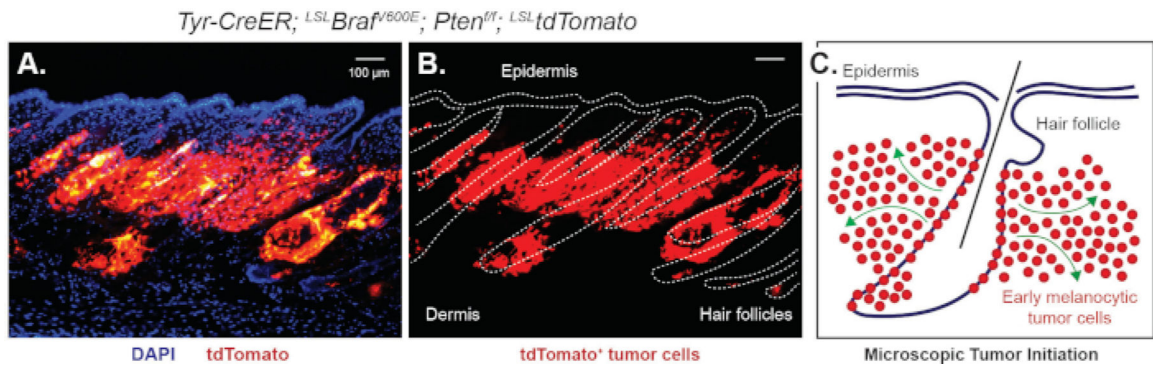


Figure 3: Microscopic observation of melanoma initiation controlled by chemical depilation. Chemical depilation can significantly induce the activation of quiescent tumor-prone MCSCs. Then, microscopic tumor initiation demonstrated by the lineage tracing marker tdTomato can be observed within 2 weeks. This figure demonstrates the microscopic phenotype 16 days post 3 days tamoxifen by IP injection followed by chemical depilation using different visualizations of the same field of view. **(A)** tdTomato⁺ tumor cells originating from the hair follicle merged with Dapi nuclear counter stain. **(B)** Hair follicles and interfollicular epidermis are outlined in white. **(C)** A schematic showing how tdTomato⁺ tumor cells invade into the dermis from the hair follicle, modified from Moon, H. et al.⁶.

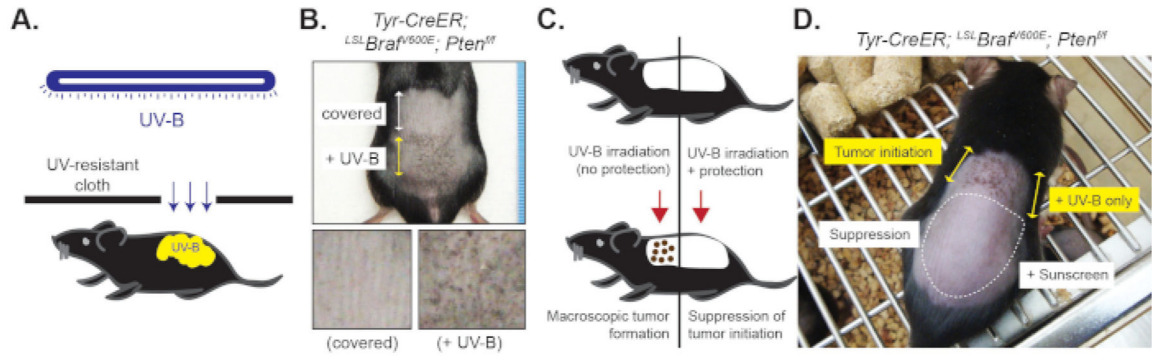


Figure 4: Macrocscopic phenotype of cutaneous melanoma induced by UV-B irradiation. Mice were treated by tamoxifen for 3 days (day 1 to 3) followed by 2 UV-B exposures (day 4 and 6). **(A)** Diagram of UV-B irradiation on the dorsal skin containing mutant MCSCs. **(B)** Macroscopic phenotype between control and UV-B exposed dorsal skin. Significant black pigmentation related to melanocytic tumor formation can be observed within 2 weeks after the second UV-B irradiation. **(C)** Diagram of sunscreen application. **(D)** While UV-B can significantly induce tumor initiation from mutant MCSCs, application of sunscreen showed significantly suppressed UV-B-mediated tumor initiation (16 days post the second UV-B irradiation).

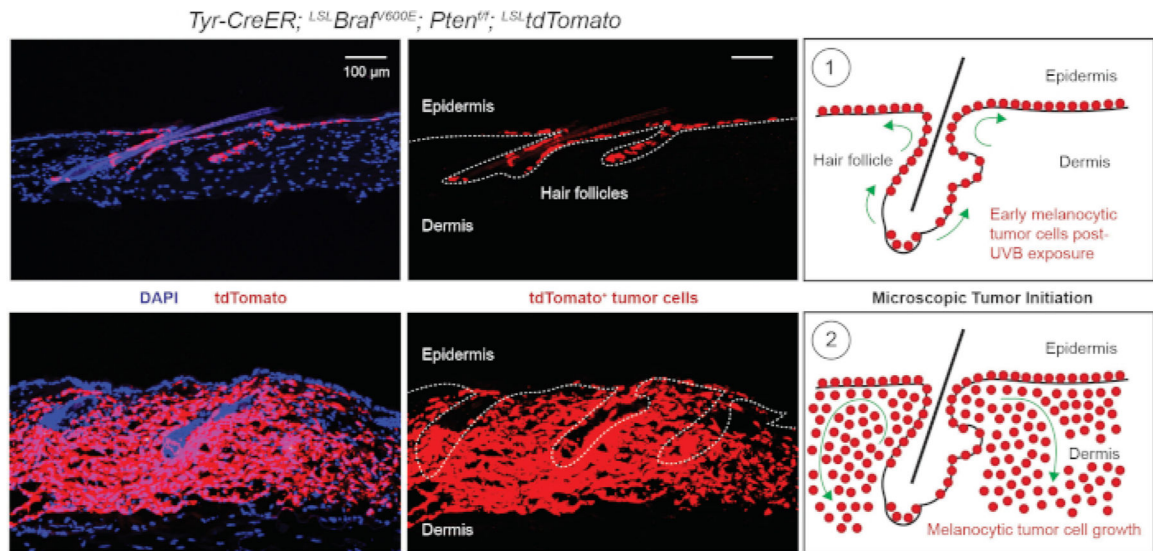


Figure 5: Microscopic observation of UV-B-induced cutaneous melanoma.

Mice were treated with tamoxifen by IP injection for 3 days (day 1 to 3) followed by 2 UV-B exposures (day 4 and 5). **(A-C)** Early tumor initiation throughout the interfollicular epidermis demonstrated by lineage tracing tdTomato can be shown at day 17. **(A)** tdTomato⁺ tumor cells are shown migrating from the hair follicle into the interfollicular epidermis. Dapi is used as a nuclear counter stain. **(B)** Dapi staining is removed and dotted line indicates location of the hair follicles and interfollicular epidermis. **(C)** Schematic indicating tdTomato⁺ cell migration from the hair germ to the interfollicular epidermis following UV-B exposure. Modified from Moon et al.⁶. **(D-F)** Then, tumor cells grow rapidly and invade the dermal tissues below (day 25). **(D)** tdTomato⁺ tumor cells have continued to proliferate and invade into the dermal tissues. Dapi is used as a nuclear counter stain. **(E)** Dapi staining is removed and dotted line indicates the location of the hair follicles and interfollicular epidermis. **(F)** Schematic indicating tdTomato⁺ cell invasion into the dermis and melanocytic tumor growth. Modified from Moon et al.⁶.

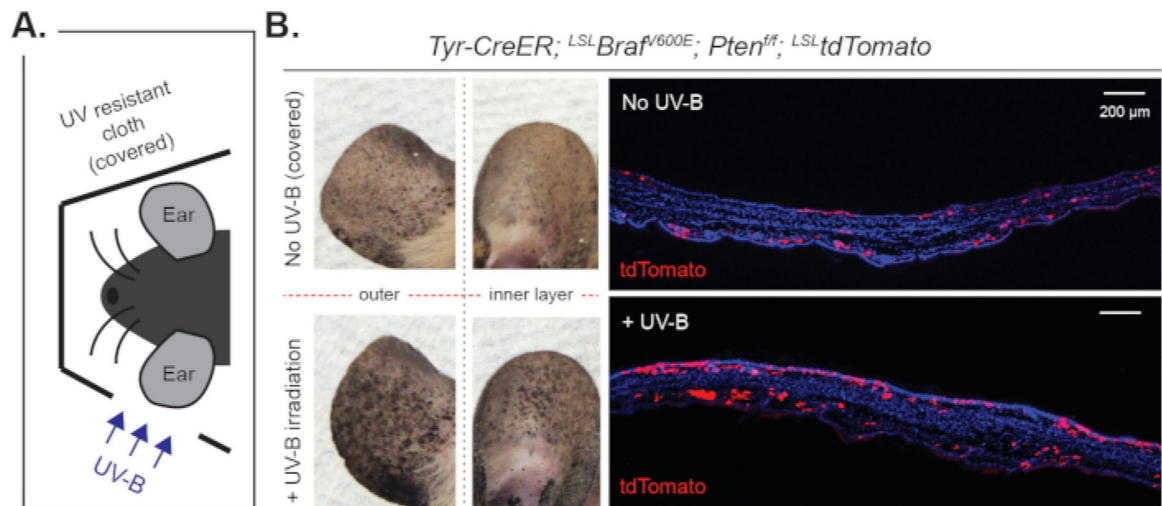


Figure 6: Macroscopic and microscopic observation of UV-B-induced melanoma in ear skin. (A) Experimental scheme. Mice were treated by tamoxifen for 3 days (day 1 to 3) followed by 3 exposures to UV-B irradiation (day 4, 6 and 8). (B) Significantly increased melanoma initiation by UV-B irradiation was observed macroscopically as well as microscopically at day 28.

Table of Materials

Name	Company	Catalog Number	Comments
Tamoxifen	Sigma	T5648-1G	For systemic injection
Tamoxifen	Cayman Chemical	13258	For systemic injection
Corn oil	Sigma	45-C8267-2.5L-EA	
4OH-tamoxifen	Sigma	H7904-25MG	For topical treatment
26 G 1/2" needles	various		Veterinary grade
1 mL syringe	various		Veterinary grade
Pet hair trimmer	Wahl	09990-502	
Hair removal cream	Nair	n/a	Available at most drug stores
Cotton swabs	various		
Ultraviolet light bulb	UVP	95-0042-08	model XX-15M midrange UV lamp
200 proof ethanol	various		pure ethanol
Histoplast PE	Fisher Scientific	22900700	paraffin pellets
Neutral Buffered Formalin, 10%	Sigma	HT501128-4L	
Clear-Rite 3	Thermo Scientific	6901	xylene substitute
O.C.T. Compound	Thermo	23730571	
Tissue Cassette	Sakura	89199-430	for FFPE processing
Cryomolds	Sakura	4557	25 x 20 mm
FFPE metal mold	Leica	3803082	24 mm x 24 mm
Isoflurane	various		Veterinary grade
Anesthesia inhalation system	various		Veterinary grade
Fine scissor	FST	14085-09	Straight, sharp/sharp
Fine scissor	FST	14558-09	Straight, sharp/sharp
Metzenbaum	FST	14018-13	Straight, blunt/blunt
Forcep	FST	11252-00	Dumont #5
Forcep	FST	11018-12	Micro-Adson
Tyr-CreER; LSL-BrafV600E; Pten-f/f	Jackson Labs	13590	
LSL-tdTomato	Jackson Labs	007914	ai14
Cre-1		n/a	GCATTACCGGTCGATGCAACGAGTGATGAG
Cre-2		n/a	GAGTGAACGAACCTGGTCGAAATCAGTGCG
Braf-V600E-1		n/a	TGAGTATTTTGTGGCAACTGC
Braf-V600E-2		n/a	CTCTGCTGGGAAAGCGGC
Kras-G12D-1		n/a	AGCTAGCCACCATGGCTTGAGTAAGTCTGCA
Kras-G12D-2		n/a	CCTTTACAAGCGCACGCAGACT GTAGA
Pten-1		n/a	ACTCAAGGCAGGGATGAGC
Pten-2		n/a	AATCTAGGGCCTCTTGTGCC
Pten-3		n/a	GCTTGATATCGAATTCCTGCAGC
tdTomato-1		n/a	AAGGGAGCTGCAGTGGAGTA

Name	Company	Catalog Number	Comments
tdTomato-2		n/a	CCGAAAATCTGTGGGAAGTC
tdTomato-3		n/a	GGCATTAAAGCAGCGTATCC
tdTomato-4		n/a	CTGTTCTGTACGGCATGG

Author Manuscript

Author Manuscript

Author Manuscript

Author Manuscript