

CORRECTION **OPEN**

Check for updates

Publisher Correction: A 39 kb structural variant causing Lynch syndrome detected by optical genome mapping and nanopore sequencing

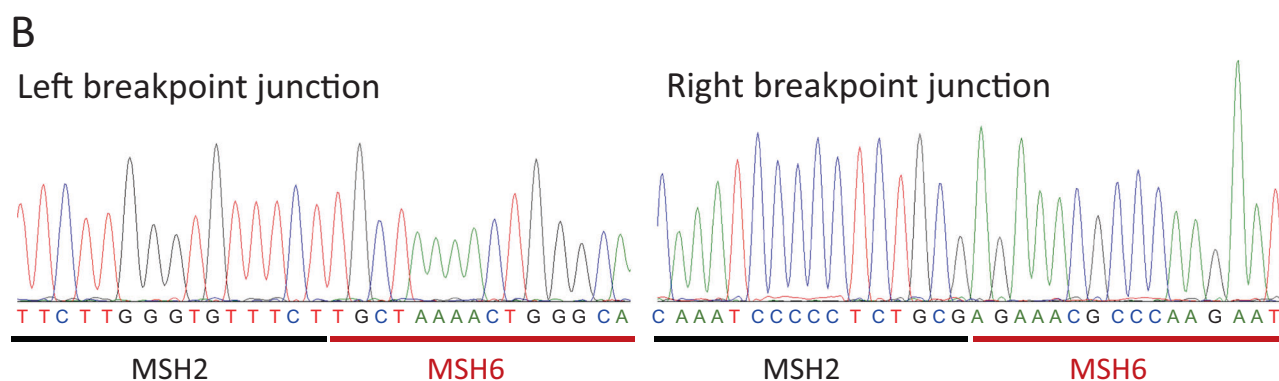
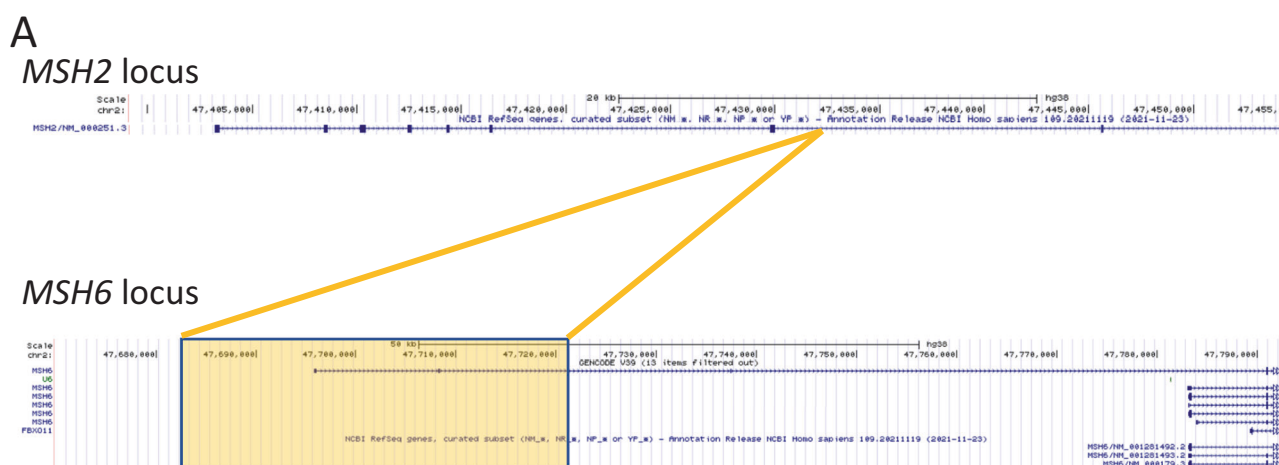
Pål Marius Bjørnstad , Ragnhild Aaløkken, June Åsheim, Arvind Y. M. Sundaram, Caroline N. Felde, G. Henriette Østby, Marianne Dalland , Wenche Sjursen, Christian Carrizosa, Magnus D. Vigeland, Hanne S. Sorte, Ying Sheng, Sarah L. Ariansen, Eli Marie Grindedal and Gregor D. Gilfillan

© The Author(s) 2023

European Journal of Human Genetics (2024) 32:601–602; <https://doi.org/10.1038/s41431-023-01519-1>

Correction to: *European Journal of Human Genetics* <https://doi.org/10.1038/s41431-023-01494-7>, published online 29 November 2023

In this article, the wrong figure appeared as Fig. 3B due to typesetting mistake.; the Fig. 3 should have appeared as shown below.



The original article has been corrected.



Open Access This article is licensed under a Creative Commons Attribution 4.0 International License, which permits use, sharing, adaptation, distribution and reproduction in any medium or format, as long as you give appropriate credit to the original author(s) and the source, provide a link to the Creative Commons license, and indicate if changes were made. The images or other third party

material in this article are included in the article's Creative Commons license, unless indicated otherwise in a credit line to the material. If material is not included in the article's Creative Commons license and your intended use is not permitted by statutory regulation or exceeds the permitted use, you will need to obtain permission directly from the copyright holder. To view a copy of this license, visit <http://creativecommons.org/licenses/by/4.0/>.

© The Author(s) 2023