

Case Report

Mitochondrial DNA Missense Mutations ChrMT: 8981A > G and ChrMT: 6268C > T Identified in a Caucasian Female with Myalgic Encephalomyelitis/Chronic Fatigue Syndrome (ME/CFS) Triggered by the Epstein–Barr Virus

Gaoyan G. Tang-Siegel ¹, David W. Maughan,¹ Milah B. Frownfelter,² and Alan R. Light³

¹Department of Molecular Physiology and Biophysics, College of Medicine, University of Vermont, Burlington, VT, USA

²Seattle Medical Associates, 1124 Columbia St. Suite 620, Seattle, WA, USA

³Department of Anesthesiology, University of Utah, Salt Lake City, UT, USA

Correspondence should be addressed to Gaoyan G. Tang-Siegel; gaoyan.tang-siegel@uvm.edu

Received 19 January 2024; Revised 23 April 2024; Accepted 25 April 2024; Published 9 May 2024

Academic Editor: Sofia Priyadarsani Das

Copyright © 2024 Gaoyan G. Tang-Siegel et al. This is an open access article distributed under the Creative Commons Attribution License, which permits unrestricted use, distribution, and reproduction in any medium, provided the original work is properly cited.

Myalgic encephalomyelitis/chronic fatigue syndrome (ME/CFS) is a multisystem disabling disease with unclear etiology and pathophysiology, whose typical symptoms include prolonged debilitating recovery from fatigue or postexertional malaise (PEM). Disrupted production of adenosine triphosphate (ATP), the intracellular energy that fuels cellular activity, is a cause for fatigue. Here, we present a long-term case of ME/CFS: a 75-year-old Caucasian female patient, whose symptoms of ME/CFS were clearly triggered by an acute infection of the Epstein–Barr virus 24 years ago (mononucleosis). Before then, the patient was a healthy professional woman. A recent DNA sequence analysis identified missense variants of mitochondrial respiratory chain enzymes, including *ATP6* (ChrMT: 8981A > G; Q152R) and *Cox1* (ChrMT: 6268C > T; A122V). Protein subunits ATP6 and Cox1 are encoded by mitochondrial DNA outside of the nucleus: the *Cox1* gene encodes subunit 1 of complex IV (CIV: cytochrome c oxidase) and the *ATP6* gene encodes subunit A of complex V (CV: ATP synthase). CIV and CV are the last two of five essential enzymes that perform the mitochondrial electron transport respiratory chain reaction to generate ATP. Further analysis of the blood sample using transmission electron microscopy demonstrated abnormal, circulating, extracellular mitochondria. These results indicate that the patient had dysfunctional mitochondria, which may contribute directly to her major symptoms, including PEM and neurological and cognitive changes. Furthermore, the identified variants of ATP6 (ChrMT: 8981A > G; Q152R) and Cox1 (ChrMT: 6268C > T; A122V), functioning at a later stage of mitochondrial ATP production, may play a role in the abnormality of the patient's mitochondria and the development of her ME/CFS symptoms.

1. Introduction

Myalgic encephalomyelitis (ME)/chronic fatigue syndrome (CFS) is a multisystemic disease [1, 2], which often severely disables the patient. ME/CFS affects millions of Americans, including many patients who have not been diagnosed and therefore have not received proper care, due to a lack of standard diagnostic tools and treatments and, primarily, a lack of understanding of the disease. The disease was identified in different age groups, which could be triggered

by either a noticeable infection [3–6] or a noninfectious event, which includes trauma [7] or a pre-existing chronic condition, e.g., vasculitis [8]. The illness is typically characterized by slow recovery from fatigue physically and mentally, with additional broad symptoms including pain, sleep disturbance, neurological and cognitive changes, motor impairment, and altered immune and autonomic responses (dysautonomia). Among them, postexertional malaise (PEM) and memory/concentration problems (brain fog) are the primary debilitating symptoms [2].

Despite diverse triggers, ME/CFS appears to be triggered in most cases after a noticeable infection that was caused by a bacterium, a fungus, or more commonly a virus, including the highly disseminated Epstein–Barr virus (EBV) [3] and severe acute respiratory syndrome coronavirus 2 (SARS-CoV-2), which caused a devastating global pandemic [9]. The subsequent 35 million Americans suffering long coronavirus disease 19 (Long COVID,) and similar symptoms [5, 6] shared with ME/CFS lend strong support to the hypothesis that ME/CFS is a postinfection syndrome, at least, in certain patient groups, and viral infections are the important triggers.

ME/CFS is featured with prolonged debilitating recovery from fatigue or PEM, as well as neurological disorders including dysautonomia, all of which are consistent with disruption of adenosine triphosphate (ATP) production. Blunted ATP production suggests dysfunctional mitochondria, as mitochondria are the intracellular organelles that produce most of our ATP through aerobic respiration. Mitochondria employ five critical respiratory chain enzymes (or complexes) for driving electron transportation to create a proton gradient for ATP production: complex I (CI, NADH: ubiquinone oxidoreductase), complex II (CII, succinate dehydrogenase), complex III (CIII, ubiquinol-cytochrome c oxidoreductase), complex IV (CIV, cytochrome c oxidase), and complex V (CV, ATP synthase) [10].

These complexes are mainly encoded by mitochondrial chromosome DNA (ChrMT DNA, or mtDNA), which is circular DNA of ~16,569 kbp, existing outside of the nucleus (Figure 1(a)). The ChrMT encodes 13 proteins [11], including *ND1-ND6* and *ND4L* that encode subunits of CI; *cox1-cox3* that encode subunits of CIV; *ATP6* and *ATP8* that encode subunits of CV; and *cyt b* that encodes CIII (Figure 1(b)). Unlike nuclear chromosomes following parental inheritance, mitochondrial chromosomes are hereditary following the maternal inheritance pattern. In addition, ChrMT is the location for oxidative phosphorylation (OXPHOS) to generate ATP, and consequently, the ChrMT DNA is 10–20 times more susceptible to oxidative damage and has been observed with high mutation rates [12]. The high mutation rate is due to (1) the abundance of reactive oxygen species (ROS) or free electrons generated through OXPHOS during ATP biosynthesis in the mitochondria [13] and (2) relatively less efficient mtDNA repair mechanisms compared with robust nuclear DNA damage repairs [12, 14].

Here, we present a female case of ME/CFS, with two identified variants of the ChrMT DNA-encoded proteins. Additional transmission electron microscopy (TEM) examination revealed abnormal extracellular mitochondria in the blood circulation. The evidence demonstrated in this case report lends strong support to the hypothesis that genetic and/or epigenetic mitochondrial abnormalities and dysfunction fundamentally contribute to the illness of ME/CFS.

2. Case Presentation

We present a 75-year-old Caucasian female patient with ME/CFS, who was diagnosed after an acute EBV infection (mononucleosis) at the age of 51. In December of 1999, she developed an acute flu-like illness: sore throat and fever for

10 days. Since then, the patient has experienced a sequence of global exacerbated illness followed by partial recovery, but never fully recovered. She presented mainly neurological and cognitive impairment, including fatigue, severe PEM, severe dysautonomia, unrefreshing sleep, widespread aches and tenderness, sporadic dizziness with vertigo, severe orthostatic intolerance, and brain fog. After meeting with a few specialists, she was finally diagnosed with ME/CFS, based on the Fukuda criteria (CDC 1994 criteria) [1] in 2004, by a neuroscience professor and ME/CFS specialist, Dr. Benjamin H. Natelson, at the University of Medicine and Dentistry of New Jersey.

At the visit, the physical examination and laboratory tests showed normal. The vital signs were normal in the supine position. However, when the patient changed from the supine position to the standing position, her end-tidal CO₂ (ETCO₂) fell to 30 mmHg (normal range: 35–45 mmHg). In addition, her symptoms became worse when she voluntarily hyperventilated in 10 breaths.

In 2017, the patient visited a different ME/CFS specialist, Dr. Lucinda Bateman, in the Bateman Horne Center, Salt Lake City, UT, who made the same diagnosis based on the 2015 criteria of the Institute of Medicine (IOM, or National Academic of Medicine, NAM) [2]. In addition, the patient's symptoms of unrefreshing sleep, cognitive impairment, and severe orthostatic intolerance with 70% drop in pulse pressure from 44 mmHg to 13 mmHg in a 10-minute standing measurement, demonstrated by using the National Aeronautics and Space Administration Lean Test (NLT) [15], also made her meet the Canadian Consensus Criteria () as a ME/CFS patient.

Prior to her bout of EBV infection in 1999, the patient was a healthy, professional woman. After acquiring the infection, the patient has suffered from ME/CFS with severe dysautonomia, cognitive impairment, and widespread pain. The patient also maintained relatively high titers of EBV antibodies, including anticapsid antigen (anti-VCA) IgM/IgG and anti-early antigen (EA) IgG, despite the fact that she has been taking antiviral drugs, including valacyclovir and valganciclovir for long periods. The elevated anti-VCA and anti-EA antibodies indicated an acute phase of EBV infections, suggesting repeated re-infections (or lytic infections) of EBV, during multiple episodes of her “crash” times. A very recent blood test was performed in June 2023, which demonstrated anti-VCA IgG > 600.0 (standard range 0.0–17.9) and anti-EA IgG > 103.0 U/mL (standard range 0.0–8.9 U/mL).

The elevated anti-EBV antibodies of the patient, however, did not meet the diagnostic criteria for chronic active Epstein–Barr virus (CAEBV) disease, which requires extremely high antibody detection, including anti-EA IgG ≥ 160 U/mL [16]. In addition to antibody titers, simultaneous quantitative PCR analyses of her blood samples at the same time indicated relatively low viral DNA loads and her most current laboratory tests (June 2023) showed 248 IU/mL, significantly lower than 10,000 IU/mL, the diagnostic criteria for CAEBV [16]. Furthermore, the patient did not present any common symptoms of CAEBV, which are normally indicators of uncontrolled viral infiltrations of

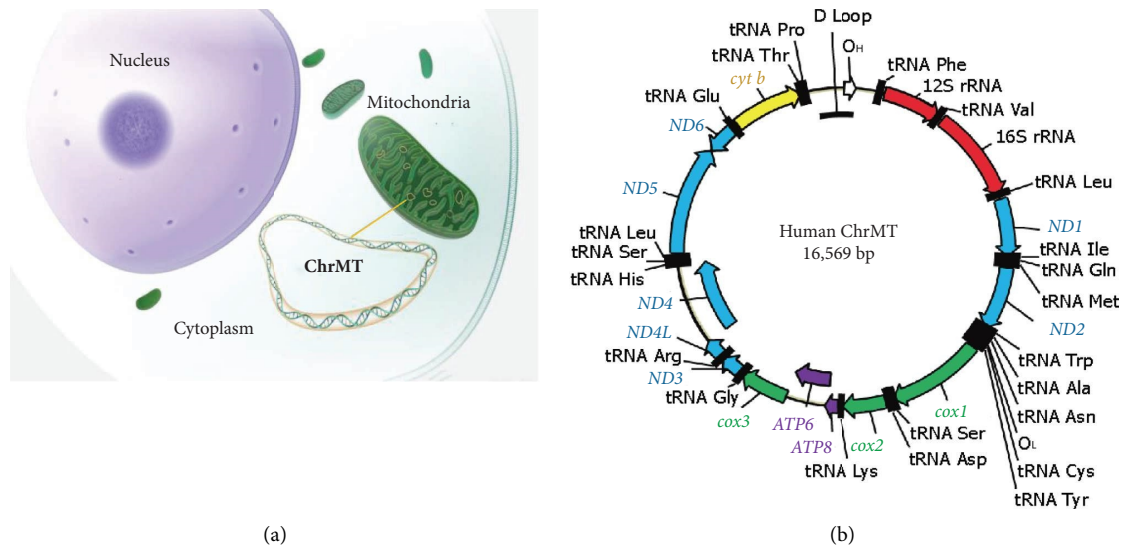


FIGURE 1: Chromosomes of mitochondria (ChrMT). Mitochondria in the cytoplasm of cells contain their own circular dsDNA (ChrMT). (a) ChrMT located outside of the nucleus. Offspring inherit ChrMT from their mothers. (b) Map of human ChrMT, derived from Shokolenko et al. [11]. *ND1-ND6* and *ND4L* encode subunits of CI; *Cox1-Cox3* encode subunits of CIV; *ATP6* and *ATP8* encode subunits of CV; and *cyt b* encodes CIII. The ChrMT encodes 13 proteins, composed of complexes of CI, CIV, CV, and CIII.

multiple organs, such as lymphadenopathy, splenomegaly, hepatitis, and pancytopenia [16, 17], except for a fever at the time when she was initially diagnosed with infectious mononucleosis in 1999.

Further ChrMT DNA sequencing analysis was performed in September 2023. Whole blood was collected using BD vacutainer tubes with K2 EDTA. The blood sample was centrifuged at $1,200 \times g$ for 10 min within 24 hours of collection. The middle puffy layer of cells, containing white blood cells (WBCs) and platelets, which appeared after the initial centrifugation, was used for cellular ChrMT DNA isolation. The top layer of plasma collected was then centrifuged at $2,000 \times g$ for 10 min to remove any contaminated cells [18]. After this second centrifugation, the top layer of plasma was collected and further centrifuged at $16,000 \times g$, 4°C , for 30 min to pellet extracellular mitochondria for ChrMT DNA isolation and TEM analyses.

The DNA of plasma or cells was first isolated using the QIAamp DNA Kit (Qiagen, Germantown, MD) separately. Briefly, a pellet of the cells or plasma was resuspended in $180 \mu\text{L}$ buffer ATL, mixed with Proteinase K, and incubated at 56°C overnight with occasional vortexing. The digested samples were added to $200 \mu\text{L}$ buffer AL, incubated at 70°C for 10 min, and continued with the standard protocol using spin columns to isolate DNA. The isolated DNA was used for further selective purification and enrichment of mitochondrial ChrMT DNA using a REPLI-g Mitochondrial DNA Kit (Qiagen, Germantown, MD), based on the recommendation of the manufacturer. Briefly, the isolated DNA sample, from either the cells or the plasma pellet, was added to the REPLI-g reaction buffer mixed with REPLI-g human mitochondrial primers, preincubated at 75°C for 5 min, followed by adding DNA polymerase, incubating at 33°C for 8 hours, and then inactivation of the enzyme at 65°C for 3 min [19, 20]. The ChrMT DNA was isolated from the

cells (including WBCs/platelets) and the plasma (Figure 2) and stored at -80°C before the sequencing analysis.

Sequencing analysis was performed using primers, and the amplified fragments were cloned into TOPO vectors (Invitrogen, Waltham, MA) for Sanger sequencing. An amplicon of 3,006 base pairs containing the *cox1* gene was generated using the primer set of 3734_For: 5'-aagtcaccctagccatcattcta-3' and 6739_Rev: 5'-gatatcatagctcagaccatacc-3' [21]. Another fragment of 2,710-base-pair amplicon containing the *ATP6* gene was generated using the primer set of 6511_For: 5'-ctgctggcatcactatactacta-3' and 9220_Rev: 5'-gattgggtgggtcattatgtgttg-3'. [21] The isolated ChrMT DNA from either the plasma or cells revealed variants of ChrMT, including *ATP6* (ChrMT: 8981A > G; Q152R) and *Cox1* (ChrMT: 6268C > T; A122V). Sequencing was performed by Eurofins Genomics (Louisville, KY).

The mitochondria isolated from the patient's plasma were further analyzed using methylamine tungstate (Nano-W, Nanoprobes, Yaphank, NY) negatively stained, whole-mount TEM [22, 23]. Mitochondria were identified with altered shapes, including irregular shapes (Figure 3), and different sizes, ranging from 400 nm to over $1 \mu\text{m}$. Some mitochondria appeared to "protrude" vesicle-like structures (approximately 100 nm in diameter) from the membrane (Figure 3).

3. Discussion

The 75-year-old female patient presented in this study is a long-term ME/CFS patient, who was diagnosed with ME/CFS two decades ago after an acute infection with EBV. Over the past 20 years, she has maintained relatively high levels of anti-VCA IgG and anti-EA IgG, as well as positive detection of viral replication, suggesting repeated, lytic viral infections, despite the fact that she was taking antiviral drugs.

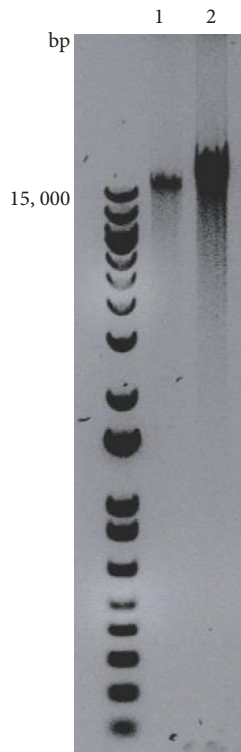


FIGURE 2: Mitochondrial chromosome DNA (ChrMT DNA) purification from the long-term ME/CFS female patient. 1. Extracellular ChrMT DNA isolated from the plasma; 2. cellular ChrMT DNA isolated from WBCs and platelets.

However, her antibody titers and levels of viral loads were lower than the diagnostic criteria for CAEBV [16]. The absence of common symptoms that indicate uncontrolled viral infections of multiple organs further eliminated the possibility of CAEBV [16, 17]. The elevated antibody titers and the presence of viral DNA in the blood could be also due to the viral genome-encoded virologs, which are identified from EBV, interfering with the host's apoptosis and elimination of infected cells [24, 25].

The dsDNA EBV is a highly disseminated virus with over 95% positive serological detection, even in those under the age of 25 [26], but in this patient, her first devastating acute infection was identified when she was 51. The EBV infects and replicates in the oral epithelial cells and B lymphocytes [27], transmitted among individuals through saliva [28, 29]. The infected B lymphocytes become the major viral reservoirs and play important roles in viral life-long persistence in infected hosts. EBV infections not only lead to benign mononucleosis [30] but also cause malignancy, including the well-recognized nasopharyngeal carcinoma [31] and Burkitt lymphoma [32, 33]. Strikingly, EBV DNA replication has been found to be significantly more active in ME/CFS patients than in healthy individuals [3], including the current patient. This female patient showed significantly high anti-EA IgG antibody production (the titer was 6–10 times higher than the normal detection range, including the latest two tests in the past year), concomitant with her typical ME/CFS symptoms.

The ChrMT DNA and protein sequence analysis revealed at least two variants, including ATP6 (ChrMT: 8981A > G Q152R) and Cox1 (ChrMT: 6268C > T A122V). Further analyses of these variants based on the structural location of the mutation within the protein [34] and physiochemical comparison of the mutated amino acids are illustrated in Figure 4. The Q152R mutation of the ATP6 protein unit is located in one of six transmembrane helical structure motifs: 6–26, 68–88, 97–117, 138–158 (as labelled in green in Figure 4(a)), 164–184, and 189–209 (). The structural analysis of complex V subunit A (encoded by the ATP6 gene, Figure 4(a)) indicated that the mutation from “Gln” to “Arg” is located in a critical helical structure of the protein unit. The amino acid “Arg” presents different physiochemistry compared with “Gln,” including volumes, chemical features, charges, and whether they are donors or acceptors (Figure 4). These physiochemical alterations may eventually lead to structural and/or functional changes. However, the mutation of ChrMT:6268C > T; Cox1: A122V is located in a topological domain of complex IV subunit 1 (encoded by the *cox1* gene, Figure 4(b);). Except for different volumes for amino acids “Ala” and “Val,” the similar physiochemical features shared by these two amino acids (Figure 4) suggest that the A122V mutation alone is less likely to cause structural and/or functional changes (Figure 4(b)), which, however, requires further investigation, as the Cox1 structure gene mutation is extremely rare [35].

Notably, pathogenic ATP6 variants, e.g., ChrMT: 8993T > G, have been linked to mitochondrial and neurological disorders [36]. Multiple pathogenic ATP6 mutations have been identified up to December 2023, based on the database searching using (Table 1). However, up to December 2023, none of the Cox1 variants have been reported, based on the database searching using . Not only Cox1 but also mutations that occurred in Cox structural genes, encoded by either mtDNA or nuclear DNA, are extremely rare [35]; a few identified Cox deficiency syndromes are due to mutations in the assembly factors [35]. However, different Cox1 deficiency model systems, established using animals including *Saccharomyces cerevisiae*, *Drosophila melanogaster*, and *Mus musculus*, have demonstrated diverse phenotypes, including Leber hereditary optic neuropathy (LHON), acquired idiopathic sideroblastic anemia (AISA), ataxia, hypotonia, and epilepsy [37].

To our knowledge, the ChrMT: 6268C > T; Cox1: A122V variant, which we identified here, is the first reported mutation of the *cox1* gene. Nevertheless, complex CIV achieves its function in the electron transport chain (ETC) by forming supercomplexes (CICIII₂CIV and CIII₂CIV) with complexes CI and/or CIII [10], suggesting that dysfunctional CIV will also affect the functions of upstream enzyme complexes, which was supported by an *in vitro* model [38]. Therefore, mutations that occurred in complexes CIV and CV, which are functioning at the later stage of the ETC, will have more progressive effects on ATP production and mitochondrial functions. We proposed that the mutations we have identified and characterized here may have potentially predisposed this patient to develop abnormal mitochondria, as

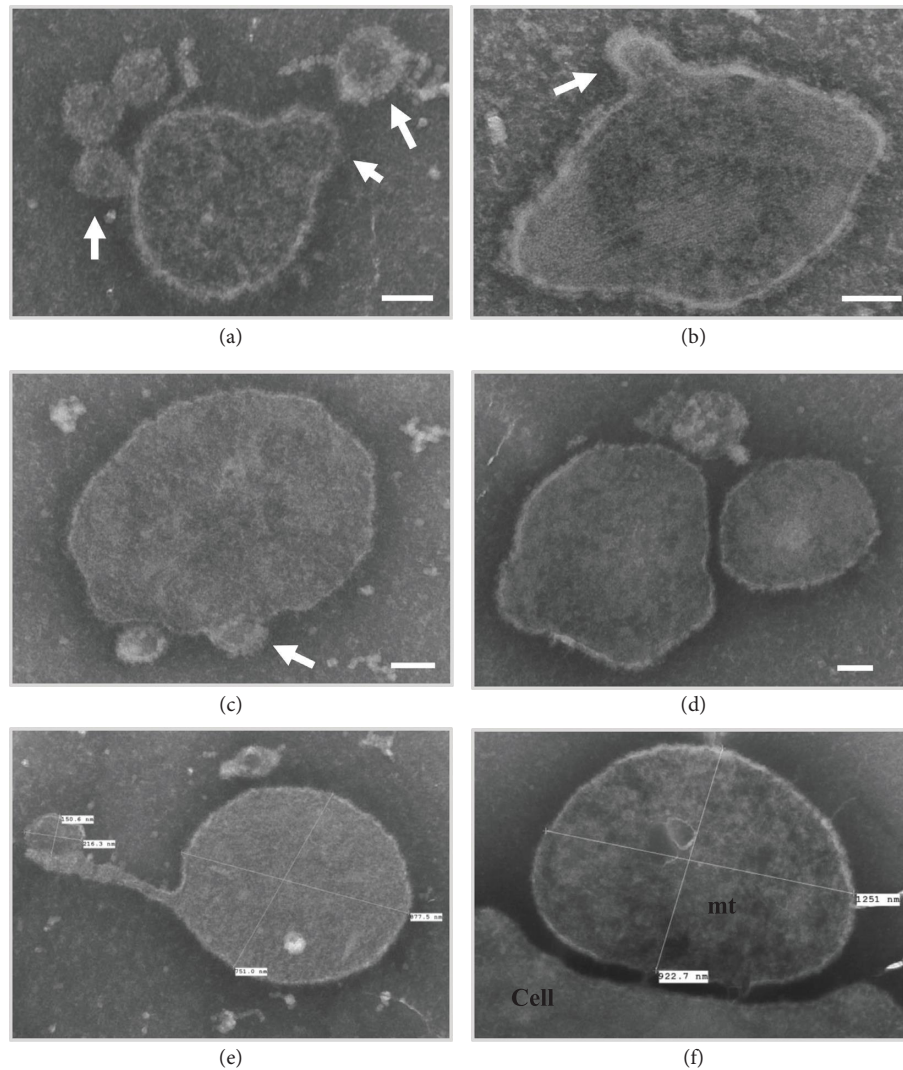


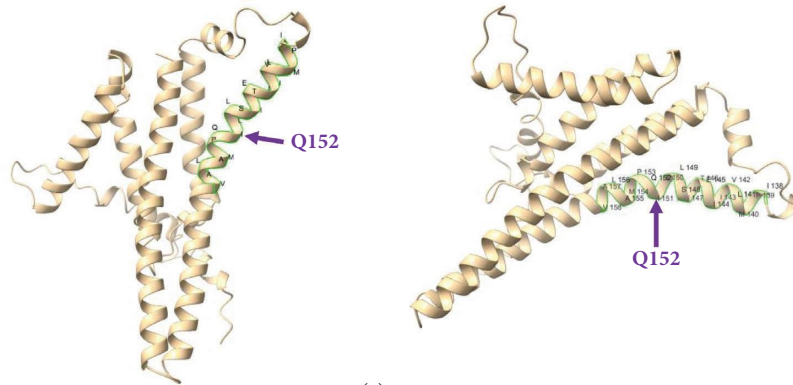
FIGURE 3: Methylamine tungstate, negatively stained, whole-mount TEM analysis of mitochondria (mt) isolated from the patient's plasma. Mitochondria with different shapes and sizes, ranging from ~ 400 nm (Panel (a)) to over $1 \mu\text{m}$ (Panel (f)), were identified. Some mitochondria are attached to “vesicle-like” structures protruding from the membrane (~ 100 nm in diameter), pointed by white arrows in Panels (a–c). Scale bar: 100 nm.

observed, which could have contributed to her major symptoms of ME/CFS: debilitating PEM and neurological and cognitive alterations.

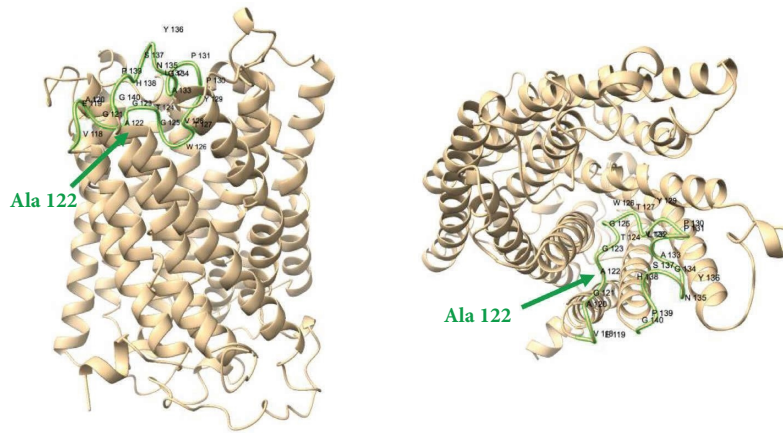
Interestingly, an extensive study performed by Billing-Ross et al. investigated the correlation between ChrMT DNA variants and ME/CFS based on 193 cases *versus* 196 control individuals and indicated that ME/CFS patients with certain mitochondrial haplogroups or point mutations at certain positions (ChrMT:150, ChrMT:930, ChrMT:1719, ChrMT:3010, ChrMT:5147, ChrMT:16093, ChrMT:16223, and ChrMT:16519) are more likely to develop certain symptoms [39]. However, the ChrMT:8981 and ChrMT:6268 mutations, which we identified in this patient, were not on their list. Furthermore, the study performed by Billing-Ross et al. did not identify any ChrMT variants, which would potentially increase the susceptibility of an individual to develop ME/CFS [39]. Given these findings, we hypothesize that the point mutations of ChrMT identified in this patient might occur later in her life

randomly, due to accumulated mitochondrial stress, including viral exposure and infection. Consistently, there are studies convincing a strong correlation between ME/CFS and mitochondrial dysfunction [40, 41].

Together with the evidence of low viral replications identified from the blood sampled at different times over a two-decade period in this ME/CFS patient, our data suggest that the ChrMT mutations identified in this patient may have initially predisposed her to an enhanced vulnerability to the consequences of viral exposure, which eventually led to her susceptibility to developing her major symptoms of ME/CFS, including brain fog and PEM. The accumulated evidence suggests that a consequently combined effect of malfunctioning mitochondria and compromised immunity promoted the development of severe ME/CFS in this patient, although we do not know at this time whether the mutations were carried from the patient's mother or mutations occurred after her birth.



(a)



(b)

Comparison of physiochemical features of mutated amid acids						
Mutations	Hydropathy	Volume	Chemical	Charge	Polarity	Hydrogen donor or acceptor atom
Q152R						
Gln	Hydrophilic	Medium	Amide	Uncharged	Polar	Donor & acceptor
Arg	Hydrophilic	Large	Basic	Positive charged	Polar	Donor
A122V						
Ala	Hydrophobic	Very Small	Aliphatic	Uncharged	Nonpolar	None
Val	Hydrophobic	Medium	Aliphatic	Uncharged	Nonpolar	None

FIGURE 4: Structural localization of identified ChrMT DNA mutations in proteins and analyses of physiochemical features of mutated amino acids. (a) Complex V subunit A and ChrMT: 8981A > G (ATP6: Q152R, pointed by purple arrows). The mutation is located in one transmembrane helical structure (138–158, highlighted in green). The mutation from Gln to Arg changes certain physiochemical features. (b) Complex IV subunit 1 and ChrMT: 6268C > T (Cox1: A122V, pointed by green arrows). The mutation from Ala to Val is located in a topological domain (118–140, highlighted in green) and appears to cause less consequence on the protein structure and/or function. Structure predictions were prepared using AlphaFold [34].

As we mentioned above, the abundance of ROS in the mitochondria [13] and nonequivalent DNA repair mechanisms [12, 14] cause ChrMT DNA to be over 10 times more susceptible to oxidative damage and DNA mutation than nuclear DNA [12]. It is possible that the ChrMT DNA mutations occurred after the patient's life-time exposure to viruses. Viruses tend to hijack host cells and reprogram energy production [24, 25, 42]. However, the patient experienced her most prominent neurological and cognitive

changes later in her life, including severe dysautonomia, unrefreshing sleep, sporadic dizziness with vertigo, severe orthostatic intolerance, and brain fog. The timing and severity of her symptoms were not limited to her immune cells, if the mutations did occur later in her life, which suggests that ChrMT DNA sequencing analyses of family members of the patient would be an important further step to understand the individual and combined role of viral infections, mitochondrial ChrMT DNA mutations, and mitochondrial

TABLE 1: Identified pathogenic *ATP6* variants.

Variation location	Genes	Conditions	Clinical significance (last reviewed)	Review status
NC_012920.1 (MT-ATP6): m.8783G > A	MT-ATP6	Leigh syndrome, Leber optic atrophy	Pathogenic/likely pathogenic (May 4, 2022)	Criteria provided, multiple submitters, no conflicts
NC_012920.1 (MT-ATP6): m.8993_8994inv	MT-ATP6	NARP syndrome	Pathogenic (October 17, 2019)	Criteria provided, single submitter
NC_012920.1: m.8993T > C	MT-ATP6	Mitochondrial disease	Pathogenic (February 17, 2021)	Reviewed by an expert panel FDA-recognized database
NC_012920.1: m.8993T > G	MT-ATP6	Mitochondrial disease	Pathogenic (March 22, 2021)	Reviewed by an expert panel FDA-recognized database
NC_012920.1: m.9176T > C	MT-ATP6	Mitochondrial disease	Pathogenic (June 30, 2022)	Reviewed by an expert panel FDA-recognized database
NC_012920.1: m.9185T > C	MT-ATP6	Mitochondrial disease	Pathogenic (June 30, 2022)	Reviewed by an expert panel FDA-recognized database

*Based on the searching results of the database:in December 2023.

malfunition in the development of postinfection syndromes with profound disabling fatigue featured in the typical case of ME/CFS reported here.

Circulating mitochondria in the blood have been the subjects of recent investigations [18, 43]; some focused on their possible contributions to diseases [44], and others focused on their potential uses as biomarkers [45]. Although double-membrane mitochondria are organelles of our cells, evolutionarily, these power plants of eukaryotic cells are considered to be originally derived from aerobic prokaryotes [25, 46]. This endosymbiotic theory [46] has been favored and supported by similarities shared with Gram-negative bacteria, which also have outer and inner membranes, as well as some similar membrane-anchored proteins [47–49].

In this case of ME/CFS, we observed that free, extracellular mitochondria appeared to “protrude” or “secrete” vesicle-like structures (Figure 3), like those secreted from Gram-negative bacteria in stressful conditions. Recently, the essential roles that mitochondria may play during the viral invasion of the host have been recognized [25]. It is likely that the abnormal appearance of the free mitochondria we observed in this patient is a consequence of malfunctional mitochondria responding to viral exposures. The causes and sequelae of large numbers of extracellular, abnormal mitochondria in the blood circulation of this ME/CFS patient, and of other patients with ME/CFS-like, postinfection syndromes, require further investigations.

Mitochondria are also important antiviral responders in host immunity and are exposed to unique *in vivo* environments, which were demonstrated by increasing evidence [25]. Due to the important roles that mitochondria play against viral infections, viruses also change to adapt themselves better *in vivo*, by generating large populations of viral genome-encoded virologs [50], which include mimicking the host’s enzymes and interfering with the mitochondrial tricarboxylic acid (TCA) cycle and ETC reaction of host cells to inhibit the apoptosis of infected cells. The presence of virologs will further increase viral persistence and the stress and vulnerability of the mitochondria during viral infections [24, 25].

In summary, the ME/CFS case presented here suggests that dysfunctional mitochondria predispose individuals to develop ME/CFS after viral infections. Mitochondrion-associated predispositions that promote patients to develop ME/CFS could be either (1) gene variants inherited at the time of birth, (2) epigenetic modifications, or (3) DNA mutations that occurred after viral exposures and/or infections. This conclusive hypothesis is supported by the fact that mitochondrial DNA is both highly susceptible to oxidative damage and mutates at a higher rate than nuclear DNA.

Data Availability

All the important data are included in this article, and extra information may be provided upon request.

Additional Points

Key Clinical Message. ME/CFS is a multisystem disabling disease with unclear etiology and population selection

mechanisms. Viral infections are known to be important triggers in certain patient groups. We report one female case, triggered by an infection of the Epstein–Barr virus, which was identified with mitochondrial DNA variants that were potentially linked to her illness.

Consent

A written informed consent was obtained from the patient to publish this case report in accordance with the patient consent policy of the journal. The medical consent form was presented and signed by the patient.

Conflicts of Interest

The authors declare that there are no conflicts of interest.

Authors’ Contributions

Gaoyan G. Tang-Sigel, PhD, MDS, generated the concept, analyzed samples, and wrote the manuscript. David W. Maughan, PhD, contributed to the initial concept, coordinated with the patient, and edited the final manuscript. Milah B. Frownfelter, MD, monitored the patient’s health, provided patient medical information, and commented on the manuscript. Alan R. Light, PhD, conducted the initial RNA-Seq analysis and commented on the manuscript.

Acknowledgments

The authors would like to thank Dr. Douglas Taatjes and Mr. Brad Vietje from the Microscopy Image Center, College of Medicine, University of Vermont, who provided technical support with the TEM analyses, as well as Mr. Alex Kochis and the KOVO Foundation for providing financial support. The authors also would like to thank Dr. Kathleen C. Light from the Department of Anesthesiology, University of Utah, for her participation in the initial RNA-Seq analysis of the patient and her comments on the manuscript. This study was supported by the University of Vermont Chronic Fatigue Syndrome Foundation and the Northern New England Clinical and Translational Research/Technology Development Initiative (NNE-CTR/TDI, awarded to Dr. Tang-Siegel; prime sponsor of NNE-CTR/TDI: U54GM115516 from the National Institutes of Health (NIH) for the NNE-CTR network).

References

- [1] K. Fukuda, S. E. Straus, I. Hickie, M. C. Sharpe, J. G. Dobbins, and A. Komaroff, “The chronic fatigue syndrome: a comprehensive approach to its definition and study,” *Annals of Internal Medicine*, vol. 121, no. 12, pp. 953–959, 1994.
- [2] “Committee on the diagnostic criteria for myalgic encephalomyelitis/chronic fatigue syndrome board on the health of select populations Institute of medicine,” in *Beyond Myalgic Encephalomyelitis/Chronic Fatigue Syndrome: Redefining an Illness*, National Academies Press, Washington DC, USA, 2015.
- [3] E. Shikova, V. Reshkova, A. Kumanova et al., “Cytomegalovirus, Epstein-Barr virus, and human herpesvirus-6

- infections in patients with myalgic encephalomyelitis/chronic fatigue syndrome,” *Journal of Medical Virology*, vol. 92, no. 12, pp. 3682–3688, 2020.
- [4] G. P. Chrousos and G. Kaltsas, “Post-SARS sickness syndrome manifestations and endocrinopathy: how, why, and so what?” *Clinical Endocrinology*, vol. 63, no. 4, pp. 363–365, 2005.
 - [5] M. Merad, C. A. Blish, F. Sallusto, and A. Iwasaki, “The immunology and immunopathology of COVID-19,” *Science*, vol. 375, no. 6585, pp. 1122–1127, 2022.
 - [6] L. Premraj, N. V. Kannapadi, J. Briggs et al., “Mid and long-term neurological and neuropsychiatric manifestations of post-COVID-19 syndrome: a meta-analysis,” *Journal of the Neurological Sciences*, vol. 434, Article ID 120162, 2022.
 - [7] J. P. O’Callaghan and D. B. Miller, “Neuroinflammation disorders exacerbated by environmental stressors,” *Metabolism*, vol. 100, Article ID 153951, 2019.
 - [8] C. van Eeden, N. Mohazab, D. Redmond et al., “Myalgic encephalomyelitis/chronic fatigue syndrome (ME/CFS) and fibromyalgia: PR3-versus MPO-ANCA-associated vasculitis, an exploratory cross-sectional study,” *The Lancet Regional Health Americas*, vol. 20, Article ID 100460, 2023.
 - [9] P. Zhou, X. L. Yang, X. G. Wang et al., “A pneumonia outbreak associated with a new coronavirus of probable bat origin,” *Nature*, vol. 579, no. 7798, pp. 270–273, 2020.
 - [10] I. Vercellino and L. A. Sazanov, “The assembly, regulation and function of the mitochondrial respiratory chain,” *Nature Reviews Molecular Cell Biology*, vol. 23, no. 2, pp. 141–161, 2022.
 - [11] I. N. Shokolenko, G. L. Wilson, and M. F. Alexeyev, “Aging: a mitochondrial DNA perspective, critical analysis and an update,” *World Journal of Experimental Medicine*, vol. 4, no. 4, pp. 46–57, 2014.
 - [12] C. Richter, J. W. Park, and B. N. Ames, “Normal oxidative damage to mitochondrial and nuclear DNA is extensive,” *Proceedings of the National Academy of Sciences of the U S A*, vol. 85, no. 17, pp. 6465–6467, 1988.
 - [13] E. Cadenas and K. J. Davies, “Mitochondrial free radical generation, oxidative stress, and aging” This article is dedicated to the memory of our dear friend, colleague, and mentor Lars Ernster (1920–1998), in gratitude for all he gave to us,” *Free Radical Biology and Medicine*, vol. 29, no. 3-4, pp. 222–230, 2000.
 - [14] A. Prakash and S. Doublé, “Base excision repair in the mitochondria,” *Journal of Cellular Biochemistry*, vol. 116, no. 8, pp. 1490–1499, 2015.
 - [15] S. D. Vernon, S. Funk, L. Bateman et al., “Orthostatic challenge causes distinctive symptomatic, hemodynamic and cognitive responses in Long COVID and Myalgic Encephalomyelitis/Chronic Fatigue Syndrome,” *Frontiers of Medicine*, vol. 9, Article ID 917019, 2022.
 - [16] J. I. Kawada, Y. Ito, K. Ohshima et al., “Updated guidelines for chronic active Epstein-Barr virus disease,” *International Journal of Hematology*, vol. 118, no. 5, pp. 568–576, 2023.
 - [17] H. Kimura and J. I. Cohen, “Chronic active Epstein-Barr virus disease,” *Frontiers in Immunology*, vol. 8, p. 1867, 2017.
 - [18] Z. Al Amir Dache, A. Otandault, R. Tanos et al., “Blood contains circulating cell-free respiratory competent mitochondria,” *The FASEB Journal*, vol. 34, no. 3, pp. 3616–3630, 2020.
 - [19] M. Saleh Jaweesh, M. E. Hammadeh, F. W. Dahadhah, M. S. Al Zoubi, and H. Amor, “Association between the single nucleotide variants of the mitochondrial cytochrome B gene (MT-CYB) and the male infertility,” *Molecular Biology Reports*, vol. 49, no. 5, pp. 3609–3616, 2022.
 - [20] S. Dasgupta, R. Koch, W. H. Westra et al., “Mitochondrial DNA mutation in normal margins and tumors of recurrent head and neck squamous cell carcinoma patients,” *Cancer Prevention Research*, vol. 3, no. 9, pp. 1205–1211, 2010.
 - [21] A. Ramos, C. Santos, L. Alvarez, R. Nogués, and M. P. Aluja, “Human mitochondrial DNA complete amplification and sequencing: a new validated primer set that prevents nuclear DNA sequences of mitochondrial origin co-amplification,” *Electrophoresis*, vol. 30, no. 9, pp. 1587–1593, 2009.
 - [22] G. G. Tang-Siegel, “Human serum mediated bacteriophage life cycle switch in *Aggregatibacter actinomycetemcomitans* is linked to pyruvate dehydrogenase complex,” *Life*, vol. 13, no. 2, p. 436, 2023.
 - [23] G. G. Tang-Siegel, C. Chen, and K. P. Mintz, “Increased sensitivity of *Aggregatibacter actinomycetemcomitans* to human serum is mediated by induction of a bacteriophage,” *Molecular Oral Microbiology*, vol. 38, no. 1, pp. 58–70, 2023.
 - [24] M. Kvensakul, S. Caria, and M. G. Hinds, “The Bcl-2 family in host-virus interactions,” *Viruses*, vol. 9, no. 10, p. 290, 2017.
 - [25] M. Sorouri, T. Chang, and D. C. Hancks, “Mitochondria and viral infection: advances and emerging battlefronts,” *mBio*, vol. 13, no. 1, Article ID e0209621, 2022.
 - [26] A. Nowalk and M. Green, “Epstein-Barr virus,” *Microbiology Spectrum*, vol. 4, no. 3, 2016.
 - [27] C. Münz, “Latency and lytic replication in Epstein-Barr virus-associated oncogenesis,” *Nature Reviews Microbiology*, vol. 17, no. 11, pp. 691–700, 2019.
 - [28] G. Houen and N. H. Trier, “Epstein-Barr virus and systemic autoimmune diseases,” *Frontiers in Immunology*, vol. 11, Article ID 587380, 2020.
 - [29] B. J. H. Ward, D. L. Schaal, E. H. Nkadi, and R. S. Scott, “EBV association with lymphomas and carcinomas in the oral compartment,” *Viruses*, vol. 14, no. 12, p. 2700, 2022.
 - [30] K. Luzuriaga and J. L. Sullivan, “Infectious mononucleosis,” *New England Journal of Medicine*, vol. 362, no. 21, pp. 1993–2000, 2010.
 - [31] M. L. K. Chua, J. T. S. Wee, E. P. Hui, and A. T. C. Chan, “Nasopharyngeal carcinoma,” *The Lancet*, vol. 387, no. 10022, pp. 1012–1024, 2016.
 - [32] M. A. Epstein, B. G. Achong, and Y. M. Barr, “Virus particles in cultured lymphoblasts from Burkitt’s lymphoma,” *The Lancet*, vol. 283, no. 7335, pp. 702–703, 1964.
 - [33] L. Fitzsimmons and G. L. Kelly, “EBV and apoptosis: the viral master regulator of cell fate?” *Viruses*, vol. 9, no. 11, p. 339, 2017.
 - [34] J. Jumper, R. Evans, A. Pritzel et al., “Highly accurate protein structure prediction with AlphaFold,” *Nature*, vol. 596, no. 7873, pp. 583–589, 2021.
 - [35] M. Zeviani and C. Viscomi, “Mitochondrial neurodegeneration,” *Cells*, vol. 11, no. 4, p. 637, 2022.
 - [36] R. D. Ganetzky, C. Stendel, E. M. McCormick et al., “MT-ATP6 mitochondrial disease variants: phenotypic and biochemical features analysis in 218 published cases and cohort of 14 new cases,” *Human Mutation*, vol. 40, no. 5, pp. 499–515, 2019.
 - [37] M. Brischigliaro and M. Zeviani, “Cytochrome c oxidase deficiency,” *Biochimica et Biophysica Acta (BBA) Bioenergetics*, vol. 1862, no. 1, Article ID 148335, 2021.
 - [38] I. P. Hargreaves, A. J. Duncan, L. Wu, A. Agrawal, J. M. Land, and S. J. Heales, “Inhibition of mitochondrial complex IV leads to secondary loss complex II-III activity: implications for the pathogenesis and treatment of mitochondrial encephalomyopathies,” *Mitochondrion*, vol. 7, no. 4, pp. 284–287, 2007.

- [39] P. Billing-Ross, A. Germain, K. Ye, A. Keinan, Z. Gu, and M. R. Hanson, "Mitochondrial DNA variants correlate with symptoms in myalgic encephalomyelitis/chronic fatigue syndrome," *Journal of Translational Medicine*, vol. 14, no. 1, p. 19, 2016.
- [40] J. Castro-Marrero, M. D. Cordero, N. Sáez-Francas et al., "Could mitochondrial dysfunction be a differentiating marker between chronic fatigue syndrome and fibromyalgia?" *Antioxidants and Redox Signaling*, vol. 19, no. 15, pp. 1855–1860, 2013.
- [41] D. Missailidis, S. J. Annesley, C. Y. Allan et al., "An isolated complex V inefficiency and dysregulated mitochondrial function in immortalized lymphocytes from ME/CFS patients," *International Journal of Molecular Sciences*, vol. 21, no. 3, p. 1074, 2020.
- [42] N. Purandare, E. Ghosalkar, L. I. Grossman, and S. Aras, "Mitochondrial oxidative phosphorylation in viral infections," *Viruses*, vol. 15, no. 12, p. 2380, 2023.
- [43] X. Song, W. Hu, H. Yu et al., "Existence of circulating mitochondria in human and animal peripheral blood," *International Journal of Molecular Sciences*, vol. 21, no. 6, p. 2122, 2020.
- [44] L. H. Boudreau, A. C. Duchez, N. Cloutier et al., "Platelets release mitochondria serving as substrate for bactericidal group IIA-secreted phospholipase A2 to promote inflammation," *Blood*, vol. 124, no. 14, pp. 2173–2183, 2014.
- [45] L. Rochette, E. Rigal, G. Dogon et al., "Mitochondrial-derived peptides: new markers for cardiometabolic dysfunction," *Archives of Cardiovascular Diseases*, vol. 115, no. 1, pp. 48–56, 2022.
- [46] C. Ku, S. Nelson-Sathi, M. Roettger et al., "Endosymbiotic origin and differential loss of eukaryotic genes," *Nature*, vol. 524, no. 7566, pp. 427–432, 2015.
- [47] B. E. Dunn, R. M. Roop, C. C. Sung, S. A. Sharma, G. I. Perez-Perez, and M. J. Blaser, "Identification and purification of a cpn60 heat shock protein homolog from *Helicobacter pylori*," *Infection and Immunity*, vol. 60, no. 5, pp. 1946–1951, 1992.
- [48] R. S. Gupta, "Evolution of the chaperonin families (Hsp60, Hsp10 and Tcp-1) of proteins and the origin of eukaryotic cells," *Molecular Microbiology*, vol. 15, no. 1, pp. 1–11, 1995.
- [49] T. Szoke, A. Nussbaum-Shochat, and O. Amster-Choder, "Evolutionarily conserved mechanism for membrane recognition from bacteria to mitochondria," *FEBS Letters*, vol. 595, no. 22, pp. 2805–2815, 2021.
- [50] M. Moniruzzaman, M. P. Erazo Garcia, R. Farzad et al., "Virologs, viral mimicry, and virocell metabolism: the expanding scale of cellular functions encoded in the complex genomes of giant viruses," *FEMS Microbiology Reviews*, vol. 47, no. 5, p. 053, 2023.