

Non-invasive spinal cord electrical stimulation for arm and hand function in chronic tetraplegia: a safety and efficacy trial

Received: 1 December 2023

Accepted: 22 March 2024

Published online: 20 May 2024

 Check for updates

Chet Moritz^{1,26}, Edelle C. Field-Fote^{2,26}, Candace Tefertiller^{3,26}, Ilse van Nes⁴, Randy Trumbower^{5,6}, Sukhvinder Kalsi-Ryan⁷, Mariel Purcell⁸, Thomas W. J. Janssen^{9,10}, Andrei Krassioukov¹¹, Leslie R. Morse¹², Kristin D. Zhao¹³, James Guest^{14,15}, Ralph J. Marino¹⁶, Lynda M. Murray^{17,18}, Jill M. Wecht¹⁸, Markus Rieger¹⁹, Jared Pradarelli¹⁹, Amanda Turner¹⁹, Jessica D'Amico^{19,20,21}, Jordan W. Squair^{22,23,24,25} & Gregoire Courtine^{22,23,24,25} ✉

Cervical spinal cord injury (SCI) leads to permanent impairment of arm and hand functions. Here we conducted a prospective, single-arm, multicenter, open-label, non-significant risk trial that evaluated the safety and efficacy of ARC^{EX} Therapy to improve arm and hand functions in people with chronic SCI. ARC^{EX} Therapy involves the delivery of externally applied electrical stimulation over the cervical spinal cord during structured rehabilitation. The primary endpoints were safety and efficacy as measured by whether the majority of participants exhibited significant improvement in both strength and functional performance in response to ARC^{EX} Therapy compared to the end of an equivalent period of rehabilitation alone. Sixty participants completed the protocol. No serious adverse events related to ARC^{EX} Therapy were reported, and the primary effectiveness endpoint was met. Seventy-two percent of participants demonstrated improvements greater than the minimally important difference criteria for both strength and functional domains. Secondary endpoint analysis revealed significant improvements in fingertip pinch force, hand prehension and strength, upper extremity motor and sensory abilities and self-reported increases in quality of life. These results demonstrate the safety and efficacy of ARC^{EX} Therapy to improve hand and arm functions in people living with cervical SCI. ClinicalTrials.gov identifier: [NCT04697472](https://clinicaltrials.gov/ct2/show/study/NCT04697472).

Spinal cord injury (SCI) disrupts the bidirectional communication between the regions of the brain and spinal cord that produce and regulate essential neurological functions^{1–6}. When the SCI occurs in the cervical segments, the consequence is often irreversible impairment of arm and hand functions.

Preclinical studies demonstrated that electrical stimulation of the spinal cord restores impaired neurological functions when

the stimulation is applied over the spinal segments that contain the neurons involved in the control of these functions^{7–17}. Case studies leveraged this principle in humans with SCI, reporting immediate improvements in a range of neurological functions in response to electrical stimulation of the spinal cord, including standing and walking^{8,18–24}, muscle spasms^{25,26}, hemodynamic regulation^{12,19,27}, lower urinary tract control^{28–30} and the function of the arms and hands^{31–36}.

A full list of affiliations appears at the end of the paper. ✉ e-mail: gregoire.courtine@epfl.ch

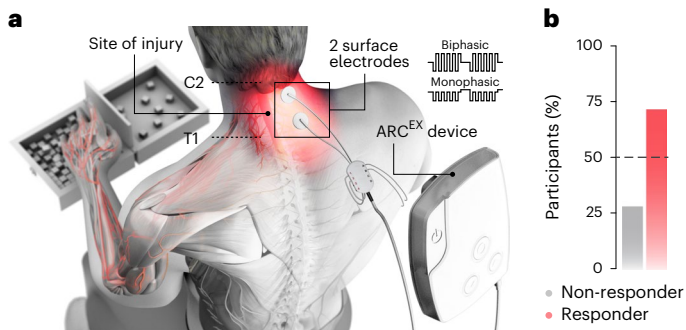


Fig. 1 | Overview and efficacy of ARC^{EX} Therapy. **a**, ARC^{EX} Therapy consists of delivering externally applied electrical stimulation to the cervical spinal cord during structured rehabilitation. The stimulating electrodes are located above and below the injury. **b**, The primary effectiveness endpoint tested the hypothesis that the majority of the participants would demonstrate significant improvements in selected strength and functional performance domains from the end of the rehabilitation-alone period to the end of the ARC^{EX} Therapy period.

Moreover, the long-term application of electrical stimulation to the spinal cord during rehabilitation led to neurological improvements that persisted in the absence of stimulation^{8,24,33,34,37}. Similar improvements have been observed in people with stroke³⁸. Evidence suggests that these neurological improvements are due to the growth of residual white matter tracts onto specific neuronal populations that are engaged by afferent pathways recruited by electrical stimulation and that reorganize in response to rehabilitation^{7,8,10,39–41}.

Stimulation of the spinal cord can be achieved using non-invasive methodology whereby electrical current is delivered to the spinal cord through surface electrodes, so as to modulate neuronal subpopulations within the targeted spinal segments through the recruitment of afferent fibers where they enter in the spinal cord^{32,34,42}. The ARC^{EX} device has been engineered for the delivery of such stimulation and is under investigation for the improvement of arm and hand functions after chronic cervical SCI (Fig. 1a). We conducted a pivotal trial (Up-LIFT) to assess the safety of ARC^{EX} Therapy to modulate the activity of the cervical spinal cord and the effectiveness of ARC^{EX} Therapy to improve arm and hand functions compared to rehabilitation alone. Here we report the results of this prospective, single-arm, multicenter, open-label, non-significant risk trial (Fig. 1b).

Results

Patient disposition

From 14 January to 24 December 2021, a total of 65 participants underwent screening and were enrolled in the Up-LIFT trial (Fig. 2). By the end of June 2022, 60 participants had completed the entire protocol and assessments. One participant withdrew from the study before any study procedures; two withdrew during the rehabilitation-alone period for personal reasons unrelated to the study; and two withdrew during the ARC^{EX} Therapy period, one due to protocol non-adherence and one for personal reasons. The clinical database was locked for analysis in July 2022. The 60 participants who completed the protocol had each undergone at least 24 sessions during each of the rehabilitation-alone (mean, 25 sessions) and ARC^{EX} Therapy (mean, 25 sessions) periods. During ARC^{EX} Therapy sessions, stimulation was delivered at 30 Hz with a 10-kHz carrier frequency overlay, which consisted of 10 pulses with a 10-kHz frequency and 100- μ s pulse width (Fig. 1a and Extended Data Fig. 1). The 60 participants were included in the final primary effectiveness endpoint analysis. The demographic and baseline clinical characteristics of the 60 participants are reported in Table 1. Demographic representation within the clinical trial population was in line with the general population of people living with cervical SCI⁴³. The Up-LIFT trial was fully enrolled within 1 year, and follow-up assessments



Fig. 2 | Screening and treatment exposure during the Up-LIFT trial. The Up-LIFT trial was a prospective, single-arm, multicenter, non-significant risk trial designed to evaluate the safety and efficacy of ARC^{EX} Therapy to improve arm and hand functions in people with chronic cervical SCI. Participants were screened and enrolled after a baseline assessment. They then underwent a period of rehabilitation alone followed by ARC^{EX} Therapy for the same period of time. Participants were considered to have completed the trial after finishing all sessions of rehabilitation alone, ARC^{EX} Therapy and all study assessments.

were completed according to the trial design, despite constraints on clinic and hospital services related to the coronavirus disease 2019 (COVID-19) pandemic.

Primary outcomes

Of the 60 participants included in the primary effectiveness endpoint analysis, 43 (72%) met or exceeded the minimally important difference (MID) criteria for at least one outcome of the strength domain (International Standards for Neurological Classification of Spinal Cord Injury-Upper Extremity Measurement Scale (ISNCSCI-UEMS), Graded Redefined Assessment of Strength, Sensibility and Prehension (GRASSP)-Strength, grasp force or pinch force) and at least one outcome of the functional performance domain (Capabilities of Upper Extremity Test (CUE-T) score or GRASSP-Prehension Performance), while 54 participants (90%) met the MID criteria for at least one strength or functional outcome (Fig. 1b, Table 2 and Extended Data Figs. 2–4).

Secondary outcomes

Secondary effectiveness endpoints included the superiority of responder rates after ARC^{EX} Therapy compared to rehabilitation alone as well as the changes in single outcomes between enrollment and the end of the rehabilitation-alone period versus between enrollment and the end of the ARC^{EX} Therapy period.

Table 1 | Characteristics of the participants at baseline^a

Characteristic	Safety population (n=64)	Modified intention-to-treat population (n=60)
Age (years)	46.5±15.5	47.2±15.5
Age at time of injury (years)	40.6±16.1	41.1±16.2
Sex, n (%)		
Female	11 (17.2)	10 (16.7)
Male	53 (82.8)	50 (83.3)
Race, n (%) ^b		
Asian	3 (4.7)	3 (5.0)
Asian-White	1 (1.6)	1 (1.7)
Black or African American	1 (1.6)	1 (1.7)
Other	2 (3.1)	1 (1.7)
White	57 (89.1)	54 (90.0)
Ethnicity, n (%)		
Hispanic or Latino	4 (6.3)	3 (5.0)
Non-Hispanic or Latino	60 (93.8)	57 (95.0)
AIS, n (%)		
B	10 (15.6)	9 (15.0)
C	30 (46.9)	28 (46.7)
D	24 (37.5)	23 (38.3)
Cause of injury, n (%)		
Fall	16 (25.0)	15 (25.0)
Other	3 (4.7)	2 (3.3)
Recreation	14 (21.9)	14 (23.3)
Sport	17 (26.6)	17 (28.3)
Vehicular	14 (21.9)	12 (20.0)
Time since injury (years)	5.9±7.3	6.1±7.5
Chronicity, n (%)		
1-5 years	44 (68.8)	41 (68.3)
5-10 years	12 (18.8)	11 (18.3)
>10 years	8 (12.5)	8 (13.3)
Neurological level, n (%)		
C2	9 (14.1)	9 (15.0)
C3	4 (6.3)	3 (5.0)
C4	18 (28.1)	16 (26.7)
C5	13 (20.3)	13 (21.7)
C6	13 (20.3)	13 (21.7)
C7	6 (9.4)	6 (10.0)
C8	1 (1.6)	0

^a Plus-minus values are means±s.d. The modified intention-to-treat population included all participants who underwent at least 24 sessions (minimum 12 sessions per month) during the rehabilitation-alone period and at least 24 sessions during the ARC^{EX} Therapy period. ^b Race was reported by the participants.

Structured rehabilitation is a methodology that can mediate improvement in arm and hand functions for people with chronic tetraplegia⁴⁴⁻⁴⁶. These improvements, however, are generally confined to functional domains, and bona fide changes in the underlying neurological status are not expected. Accordingly, we found that 63% of the participants met the MID responder criteria for improvements in arm and hand functions in response to the 2-month period of rehabilitation

Table 2 | Effectiveness endpoints (modified intention-to-treat population)^a

Endpoints	Value	P value
Primary endpoint^b		
Strength responder, n (%)	52 (86.7)	
Function responder, n (%)	45 (75.0)	
Responder, n (%)	43 (71.7)	< 0.001
Secondary responder analysis endpoint^c		
ARC ^{EX} non-responder, n (%)		
Rehabilitation responder	4 (6.7)	
Rehabilitation non-responder	6 (10.0)	
ARC ^{EX} responder, n (%)		
Rehabilitation responder	34 (56.7)	
Rehabilitation non-responder	16 (26.7)	0.012
	Change from end of rehabilitation alone to end of ARC^{EX} Therapy	P value
Secondary hierarchical endpoint^d		
Pinch force	4.8±16.1	0.002*
GRASSP-Prehension Performance	1.6±2.9	<0.001
GRASSP-Strength	2.8±5.4	<0.001*
UEMS	2.2±3.2	<0.001*
TSS	9.6±15.1	<0.001
EQ-5D-5L	1.7±14.1	0.028*
SCIM III total score	0.5±4.2	0.101*
WHOQOL-Physical Domain	1.6±8.0	-
WHOQOL-Psychological Domain	-0.4±9.4	-
WHOQOL-Social Relationships	1.5±10.3	-
WHOQOL-Environment	-0.4±7.5	-

^a Plus-minus values are means±s.d. The modified intention-to-treat population included all participants who underwent at least 24 sessions (minimum 12 sessions per month) during the rehabilitation-alone period and at least 24 sessions during the ARC^{EX} Therapy period.

^b The primary effectiveness endpoint tested the hypothesis that more than 50% of participants would meet responder criteria for both strength and function. This hypothesis was evaluated using a one-sided exact binomial test. ^c Superiority of ARC^{EX} Therapy compared to rehabilitation alone was tested by comparing the proportion of participants who converted into responders from enrollment to the end of the rehabilitation-alone period with the proportion of participants who converted from enrollment to the end of the ARC^{EX} Therapy period. This secondary endpoint was tested using McNemar's test. ^d Changes in individual outcomes were assessed from enrollment to the end of ARC^{EX} Therapy compared to changes from enrollment to the end of rehabilitation alone using a one-sided paired t-test or a paired Wilcoxon rank-sum test if data were not normal. The order of the secondary endpoints according to the hierarchical analysis plan is also provided in the Supplementary Information. The hierarchy failed at the seventh endpoint (Spinal Cord Independence Measure, Version III (SCIM III) total score). Dashes indicate P values that are not provided due to failure of the hierarchical testing of results. * indicates a parametric test.

alone. This response rate was inferior to the response rate after the ARC^{EX} Therapy period ($P = 0.012$, McNemar's test). As anticipated, most of the gain occurred during the first month of rehabilitation alone and primarily involved expected improvements in functional domains. Indeed, participants did not show significant improvements in standard neurological assessments, including upper limb motor and sensory scores, in response to rehabilitation alone (Fig. 3 and Extended Data Table 1). Moreover, analysis of all the individual outcomes between the first and second month of rehabilitation alone revealed an absence of significant improvement, indicating that a number of participants showed initial improvements but reached a rapid plateau that occurred before the onset of ARC^{EX} Therapy (Fig. 3 and Extended Data Fig. 5). These improvements were in stark contrast

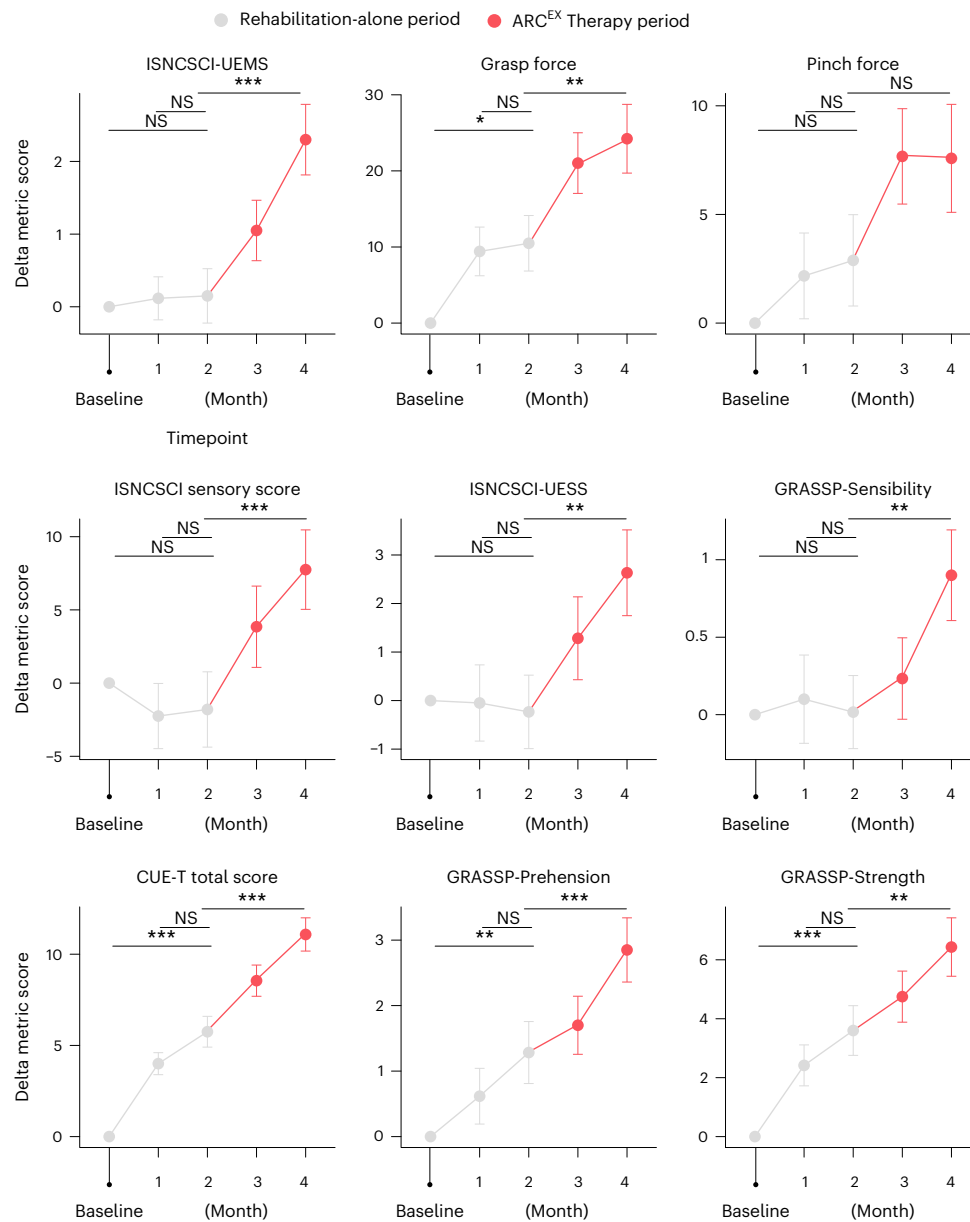


Fig. 3 | Effect of ARC^{EX} Therapy on force, sensory and functional performance. Improvements in outcomes of strength and functional performance domains during the rehabilitation-alone period and during the ARC^{EX} Therapy period. These results suggest that a longer period of ARC^{EX} Therapy may promote

additional benefits. Red color indicates the period of ARC^{EX} Therapy. Statistics represent one-way repeated-measures ANOVA with Tukey's HSD post hoc testing. * $P < 0.05$, ** $P < 0.01$ and *** $P < 0.001$. NS, not significant.

to those observed after ARC^{EX} Therapy, wherein significant improvements in functional domains and neurological status, including both upper limb motor and sensory scores, were observed throughout the period with ARC^{EX} Therapy (Fig. 3, Table 2, Extended Data Figs. 5 and 6, Extended Data Table 2 and Supplementary Data 1).

Table 2 and Fig. 3 report the improvements across individual outcomes that were measured monthly for each of the hierarchical secondary effectiveness endpoints and additional strength, function and sensory outcomes obtained for all the participants who completed the Up-LIFT trial. These comparisons revealed significant improvements over the course of ARC^{EX} Therapy in pinch force (mean difference = 4.8 N; 90% confidence interval (CI) = 1.25–8.44 N; $P = 0.002$), GRASSP-Prehension Performance score (mean difference = 1.6; 90% CI = 0.9–2.2; $P < 0.001$), GRASSP-Strength score (mean difference = 2.8; 90% CI = 1.6–3.9; $P < 0.001$) and ISNCSCI-UEMS (mean difference = 2.2; 90% CI = 1.5–2.8; $P < 0.001$). In addition to strength and functional

performance domains, a significant increase in ISNCSCI total sensory score (TSS) (mean difference = 9.6; 90% CI = 6.3–12.8; $P < 0.001$) was detected in response to ARC^{EX} Therapy compared to rehabilitation alone. Additionally, exploratory statistical comparisons quantifying the magnitude of improvements obtained after rehabilitation alone compared to those obtained after an equivalent period of ARC^{EX} Therapy revealed the superiority of ARC^{EX} Therapy (Fig. 3 and Extended Data Fig. 6).

Improvements in strength, functional performance and sensory scores were associated with self-reported improvements in EuroQol five-dimensional five-level (EQ-5D-5L) scores (mean difference = 1.7; 90% CI = -1.3 to 4.8; $P < 0.028$; Table 2) in response to ARC^{EX} Therapy compared to rehabilitation alone. Improvements in independence, as measured with the SCIM III, failed to meet significance in the hierarchical statistical analysis. Due to the hierarchical statistical plan, changes in quality of life measured with the Abbreviated World

Table 3 | Overview of adverse events (safety population)^a

Event	Before rehabilitation	Rehabilitation alone	ARC ^{EX} Therapy	Any time
Any adverse event	3 (4.7)	44 (68.8)	34 (53.1)	50 (78.1)
Any serious adverse event	1 (1.6)	1 (1.6)	1 (1.6)	3 (4.7)
Adverse event related to device	–	–	17 (26.6)	17 (26.6)
Serious adverse event related to device	–	–	0 (0.0)	0 (0.0)
Adverse event related to study procedures	0 (0.0)	8 (12.5)	13 (20.3)	18 (28.1)
Adverse event leading to discontinuation	0 (0.0)	0 (0.0)	0 (0.0)	0 (0.0)
Total number of adverse events	5	105	128	238

^a Data shown are the number of participants (percent). The safety population included participants (n=64) exposed to any study procedure.

Health Organization Quality of Life (WHOQOL-BREF) questionnaire were not tested, yet 52 (87%) of participants reported improvements in at least one WHOQOL-BREF subscore or the EQ-5D-5L questionnaire (Table 2 and Extended Data Table 3).

Safety

No serious adverse events were reported that were related to either ARC^{EX} Therapy or study procedures in any of the 64 participants who were exposed to any procedures of the Up-LIFT trial (Table 3). A total of 238 adverse events occurred throughout the duration of the study (Table 3, Extended Data Table 3 and Supplementary Data 2). These adverse events were reported in 50 of the 64 individuals who were exposed to any aspect of the Up-LIFT trial procedures. Three of these 238 adverse events were considered serious due to hospitalization associated with the event yet were unrelated to ARC^{EX} Therapy or study procedures. They included constipation, urinary tract infections and bladder stone. Forty-four non-serious adverse events were related to ARC^{EX} Therapy and were reported in 17 of the 64 participants (Table 3). One of these 44 events was a severe adverse event, which was reported in one participant and was related to the occurrence of severe muscle spasms during one rehabilitation session within the ARC^{EX} Therapy period, but it was unrelated to ARC^{EX} Therapy because the stimulation was not turned on when these spasms occurred. There were no unexpected adverse events.

Exploratory outcomes

Extended Data Tables 1, 2 and 4 report the changes in single outcomes for each of the pre-specified exploratory endpoints for all the participants who completed the Up-LIFT trial, as outlined in the statistical plan. Among numerous significant improvements in exploratory outcomes, we observed a significant decrease in the frequency of muscle spasms, as measured with the Penn Spasm Frequency Scale (PSFS) (mean difference = -0.2; 90% CI = -0.4 to 0.1; *P* = 0.009), improvement in sleep quality (Medical Outcomes Study (MOS) Sleep Scale) (mean difference = -4.33; 90% CI = -8.0 to -0.7; *P* = 0.025) and shortness of breath (Sleep Problems Index I (mean difference = -2.3; 90% CI = -4.5 to 0.2; *P* = 0.04)) and a reduction in pain (Numerical Rating Scale (NRS) of pain, mean difference = -0.2; 90% CI = -0.6 to 0.1; *P* = 0.04). Indeed, 51 participants (85%) reported improvements in at least one MOS Sleep Scale subscore.

Post hoc analyses

We conducted a post hoc analysis based on logistic regression odds ratios to assess the minimal value at enrollment for each strength,

functional performance and sensory scores associated with the likelihood of responding to ARC^{EX} Therapy (Extended Data Fig. 7). This analysis revealed cutoffs for ISNCSCI-UEMS (cutoff = 25), pinch force (cutoff = 25 N), grasp force (cutoff = 100 N), CUE-T (cutoff = 40), ISNCSCI sensory score (cutoff = 120), ISNCSCI upper extremity sensory score (cutoff = 40) and GRASSP-Sensibility score (cutoff = 15). We also found that participants improved more in the box and block test following the period of ARC^{EX} compared to rehabilitation alone (*P* < 0.001).

Discussion

ARC^{EX} Therapy was found to be safe and effective in 72% of participants to mediate improvements of strength and function in the hands and arms that were associated with meaningful quality of life improvements for people living with chronic cervical SCI. These results met our pre-specified criteria, because we hypothesized that the percentage of participants responding to ARC^{EX} Therapy would exceed 50%.

We found that ARC^{EX} Therapy not only mediated significant improvements in outcomes related to upper extremity strength and functional performance domains but also improved the recovery of sensory function, as measured with the ISNCSCI TSS and the GRASSP-Sensibility score. Participants also reported a decrease in the frequency and severity of muscle spasms, improved sleep quality and reduced pain. These improvements translated into significant increases in overall well-being, measured with the EQ-5D-5L, as well as outcomes assessing level of independence during activities of daily living, such as improved self-care components relying on arm and hand functions.

ARC^{EX} Therapy mediated improvements in upper limb functions that exceeded those achieved with rehabilitation alone. Although participants in the Up-LIFT trial demonstrated some improvement in measures of arm and hand functions after a period of rehabilitation alone, their neurological status improved only when delivering ARC^{EX} Therapy. Indeed, all the clinical quantifications of upper extremity motor and sensory scores improved only after ARC^{EX} Therapy. Based on the design of the trial, however, one cannot exclude the possibility that the period of rehabilitation alone improved the potential for participants to respond subsequently to ARC^{EX} Therapy. Future preclinical and clinical studies will have to uncover the mechanisms that govern the relationship between the neurological status of the participant and the responses to ARC^{EX} Therapy or rehabilitation alone as well as their interactions. Finally, we also identified the minimal values of strength, functional and sensory domains at enrollment that can guide rehabilitation and neurological specialists in the selection of patients who would optimally benefit from ARC^{EX} Therapy.

The safety profile of ARC^{EX} Therapy was thoroughly established in the Up-LIFT trial. The incidence and nature of adverse events reported in the trial were consistent with published reports on people living with chronic cervical SCI^{47,48}. The absence of any device-related serious adverse events establishes that ARC^{EX} Therapy meets the pre-specified primary and secondary safety endpoints.

The design and planning of this clinical trial was conducted with several considerations and potential limitations. Current standard of care for every patient with tetraplegia consists of a period of rehabilitation that is initiated after discharge from neurointensive care and typically lasts for a few months. Although the delivery of rehabilitation is supported by decades of research studies and clinical practice, the impact of rehabilitation on neurological status is expected to be limited and, in general, confined to functional improvements as opposed to improvement of the underlying neurological status⁴⁹. Because of this limited effect, rehabilitation is generally not prescribed to patients once they have reached the chronic phase of tetraplegia⁵⁰. Furthermore, neurological recovery in patients with tetraplegia is known to be as variable as the morphology and location of spinal cord damage, even among those with similar neurological classifications⁵¹. Consequently, the limited impact of rehabilitation alone on neurological recovery,

coupled with the inherent variation in function of people with tetraplegia, did not support a standard randomized controlled trial design.

In the context of trials involving neuromodulation therapies, where the patients can physically feel the stimulation, consultations with the study investigators exposed four compelling reasons for an open-label design. First, the feasibility of blinding becomes challenging, if not impossible, when the treatment requires the participants to perceive the electrical fields produced by the neuromodulation therapies^{52–56}. This robust perception elicited by treatments such as ARC^{EX} Therapy is in stark contrast to neuromodulation treatments for which there is no explicit sensation, wherein sham stimulation is generally standard practice in clinical trial design^{57–59}. ARC^{EX} Therapy involves electrical fields that are perceived by patients, leading to immediate improvements in manual dexterity that support enhanced participation in rehabilitation^{33,34}. If the stimulation is turned off, patients instantly notice the absence of stimulation and the lack of facilitated movement. On the other hand, because the amplitude of stimulation is the primary parameter that determines the facilitation of movement, there are few alternative parameters of stimulation that could be manipulated to elicit a perception of the stimulation by the patient without facilitating movement to some extent. Second, ethical considerations were raised about the role of sham stimulation, because subjecting participants to potential risks and discomfort without any expected benefit was deemed not appropriate for the population of people with tetraplegia for whom there are no available treatments. Therefore, it was not realistic or appropriate to design a relevant sham stimulation. Third, the sequential trial design enabled strong participant engagement, compliance and low attrition. Individuals with tetraplegia typically experience difficulties participating in trials with repeated sessions at rehabilitation centers. Fourth, this design provided the opportunity to gather valuable data on the participants' subjective experiences, including sensation of stimulation and any side effects.

We also considered a randomized cross-over design, where the order of rehabilitation alone and rehabilitation augmented by ARC^{EX} Therapy was randomized for each participant. In this design, however, any data collected after rehabilitation augmented by ARC^{EX} Therapy are likely to be affected by the lasting benefits of this treatment. Indeed, sustained neurological improvements have been reported to last for at least 3–6 months after ARC^{EX} Therapy^{8,24,33,34,60}, even after cessation of the treatment.

The additional limitations of the Up-LIFT trial primarily concern the time at which ARC^{EX} Therapy was initiated and the duration over which ARC^{EX} Therapy was delivered to the participants. Indeed, formal monthly assessments of all 60 participants revealed that, after 2 months of ARC^{EX} Therapy, the participants had not reached a plateau in their functional recovery. This absence of plateau suggests that extending the duration of ARC^{EX} Therapy beyond the arbitrary 2 months pre-specified in the Up-LIFT trial may not only mediate further improvements in strength, functional performance and sensation in people responding to ARC^{EX} Therapy but may also enable participants who did not respond to ARC^{EX} Therapy to meet the pre-established responder criteria if provided with sufficient exposure to the therapy. Second, all the recruited participants had experienced an SCI at least 1 year but up to 34 years before their enrollment in the Up-LIFT trial. Pre-clinical studies have shown that a window of opportunity for enhanced reorganization of residual neuronal pathways opens shortly after an SCI and that this reorganization augments neurological recovery. This window closes approximately 1 year after injury in humans⁶¹. Therefore, ARC^{EX} Therapy may not only accelerate the recovery of arm and hand functions but may also augment the extent of neurological improvements when delivered in the early phase after SCI. Although these possibilities were not explored in the Up-LIFT trial, post-market analyses and post-market clinical studies will enable the opportunity to address these hypotheses. Finally, future investigations involving

both preclinical models and follow-up clinical studies must explore the mechanisms responsible for the immediate and long-term improvement of arm and hand functions in response to ARC^{EX} Therapy and how the stimulation interacts with structured rehabilitation. These studies will support the optimization of ARC^{EX} Therapy and will guide the design of trials exploring the application of ARC^{EX} Therapy to improve additional neurological functions in people living with SCI.

The Up-LIFT trial demonstrates the safety and efficacy of ARC^{EX} Therapy for the improvement of hand and arm functions in people living with chronic cervical SCI. If approved by regulatory authorities, ARC^{EX} Therapy will serve as a new treatment with established safety and efficacy to improve the neurological recovery of hand and arm functions. Based on the impact of spinal cord stimulation on the recovery of movement after stroke³⁸ and Parkinson's disease⁶², we anticipate that ARC^{EX} Therapy could also play a role in augmenting the recovery of people suffering from a range of neurological disorders.

Online content

Any methods, additional references, Nature Portfolio reporting summaries, source data, extended data, supplementary information, acknowledgements, peer review information; details of author contributions and competing interests; and statements of data and code availability are available at <https://doi.org/10.1038/s41591-024-02940-9>.

References

- Anderson, M. A. et al. Natural and targeted circuit reorganization after spinal cord injury. *Nat. Neurosci.* **25**, 1584–1596 (2022).
- Courtine, G. & Sofroniew, M. V. Spinal cord repair: advances in biology and technology. *Nat. Med.* **25**, 898–908 (2019).
- Wilson, J., Hashimoto, R., Dettori, J. & Fehlings, M. Spinal cord injury and quality of life: a systematic review of outcome measures. *Evid. Based Spine Care* **2**, 37–44 (2011).
- Kokotilo, K. J., Eng, J. J. & Curt, A. Reorganization and preservation of motor control of the brain in spinal cord injury: a systematic review. *J. Neurotrauma* **26**, 2113–2126 (2009).
- Gomes-Osman, J., Cortes, M., Guest, J. & Pascual-Leone, A. A systematic review of experimental strategies aimed at improving motor function after acute and chronic. *J. Neurotrauma* **33**, 425–438 (2016).
- Munce, S. E. P. et al. Impact of quality improvement strategies on the quality of life and well-being of individuals with spinal cord injury: a systematic review protocol. *Syst. Rev.* **2**, 14 (2013).
- Asboth, L. et al. Cortico-reticulo-spinal circuit reorganization enables functional recovery after severe spinal cord contusion. *Nat. Neurosci.* **21**, 576–588 (2018).
- Kathe, C. et al. The neurons that restore walking after paralysis. *Nature* **611**, 540–547 (2022).
- Wenger, N. et al. Spatiotemporal neuromodulation therapies engaging muscle synergies improve motor control after spinal cord injury. *Nat. Med.* **22**, 138–145 (2016).
- van den Brand, R. et al. Restoring voluntary control of locomotion after paralyzing spinal cord injury. *Science* **336**, 1182–1185 (2012).
- Capogrosso, M. et al. A brain–spine interface alleviating gait deficits after spinal cord injury in primates. *Nature* **539**, 284–288 (2016).
- Squair, J. W. et al. Neuroprosthetic baroreflex controls haemodynamics after spinal cord injury. *Nature* **590**, 308–314 (2021).
- Lavrov, I. et al. Epidural stimulation induced modulation of spinal locomotor networks in adult spinal rats. *J. Neurosci.* **28**, 6022–6029 (2008).
- Squair, J. W. et al. Implanted system for orthostatic hypotension in multiple-system atrophy. *N. Engl. J. Med.* **386**, 1339–1344 (2022).

15. Alam, M. et al. Electrical neuromodulation of the cervical spinal cord facilitates forelimb skilled function recovery in spinal cord injured rats. *Exp. Neurol.* **291**, 141–150 (2017).
16. Shah, P. et al. Unique spatiotemporal neuromodulation of the lumbosacral circuitry shapes locomotor success after spinal cord injury. *J. Neurotrauma* **33**, 1709–1723 (2016).
17. Barra, B. et al. Epidural electrical stimulation of the cervical dorsal roots restores voluntary upper limb control in paralyzed monkeys. *Nat. Neurosci.* **25**, 924–934 (2022).
18. Harkema, S. et al. Effect of epidural stimulation of the lumbosacral spinal cord on voluntary movement, standing, and assisted stepping after motor complete paraplegia: a case study. *Lancet* **377**, 1938–1947 (2011).
19. Harkema, S. J. et al. Epidural spinal cord stimulation training and sustained recovery of cardiovascular function in individuals with chronic cervical spinal cord injury. *JAMA Neurol.* **75**, 1569–1571 (2018).
20. Angeli, C. A. et al. Recovery of over-ground walking after chronic motor complete spinal cord injury. *N. Engl. J. Med.* **379**, 1244–1250 (2018).
21. Gill, M. L. et al. Neuromodulation of lumbosacral spinal networks enables independent stepping after complete paraplegia. *Nat. Med.* **24**, 1677–1682 (2018).
22. Darrow, D. et al. Epidural spinal cord stimulation facilitates immediate restoration of dormant motor and autonomic supraspinal pathways after chronic neurologically complete spinal cord injury. *J. Neurotrauma* **36**, 2325–2336 (2019).
23. Rowald, A. et al. Activity-dependent spinal cord neuromodulation rapidly restores trunk and leg motor functions after complete paralysis. *Nat. Med.* **28**, 260–271 (2022).
24. Wagner, F. B. et al. Targeted neurotechnology restores walking in humans with spinal cord injury. *Nature* **563**, 65–71 (2018).
25. Hofstoetter, U. S. et al. Modification of spasticity by transcutaneous spinal cord stimulation in individuals with incomplete spinal cord injury. *J. Spinal Cord Med.* **37**, 202–211 (2014).
26. Hofstoetter, U. S. et al. Transcutaneous spinal cord stimulation induces temporary attenuation of spasticity in individuals with spinal cord injury. *J. Neurotrauma* **37**, 481–493 (2020).
27. Phillips, A. A. et al. An autonomic neuroprosthesis: noninvasive electrical spinal cord stimulation restores autonomic cardiovascular function in individuals with spinal cord injury. *J. Neurotrauma* **35**, 446–451 (2018).
28. Kreydin, E. et al. Transcutaneous electrical spinal cord neuromodulator (TESCoN) improves symptoms of overactive bladder. *Front. Syst. Neurosci.* **14**, 1 (2020).
29. Gad, P. N., Kreydin, E., Zhong, H., Latack, K. & Edgerton, V. R. Non-invasive neuromodulation of spinal cord restores lower urinary tract function after paralysis. *Front. Neurosci.* **12**, 432 (2018).
30. Herrity, A. N., Williams, C. S., Angeli, C. A., Harkema, S. J. & Hubscher, C. H. Lumbosacral spinal cord epidural stimulation improves voiding function after human spinal cord injury. *Sci. Rep.* **8**, 8688 (2018).
31. Lu, D. C. et al. Engaging cervical spinal cord networks to reenable volitional control of hand function in tetraplegic patients. *Neurorehabil. Neural Repair* **30**, 951–962 (2016).
32. Gad, P. et al. Non-invasive activation of cervical spinal networks after severe paralysis. *J. Neurotrauma* **35**, 2145–2158 (2018).
33. Inanici, F., Brighton, L. N., Samejima, S., Hofstetter, C. P. & Moritz, C. T. Transcutaneous spinal cord stimulation restores hand and arm function after spinal cord injury. *IEEE Trans. Neural Syst. Rehabil. Eng.* **29**, 310–319 (2021).
34. Inanici, F. et al. Transcutaneous electrical spinal stimulation promotes long-term recovery of upper extremity function in chronic tetraplegia. *IEEE Trans. Neural Syst. Rehabil. Eng.* **26**, 1272–1278 (2018).
35. Sharma, P. et al. Multi-site spinal cord transcutaneous stimulation facilitates upper limb sensory and motor recovery in severe cervical spinal cord injury: a case study. *J. Clin. Med.* **12**, 4416 (2023).
36. Benavides, F. D. et al. Cortical and subcortical effects of transcutaneous spinal cord stimulation in humans with tetraplegia. *J. Neurosci.* **40**, 2633–2643 (2020).
37. Rejc, E., Angeli, C. A., Atkinson, D. & Harkema, S. J. Motor recovery after activity-based training with spinal cord epidural stimulation in a chronic motor complete paraplegic. *Sci. Rep.* **7**, 13476 (2017).
38. Powell, M. P. et al. Epidural stimulation of the cervical spinal cord for post-stroke upper-limb paresis. *Nat. Med.* **29**, 689–699 (2023).
39. Hoffman, L. R. & Field-Fote, E. C. Functional and corticomotor changes in individuals with tetraplegia following unimanual or bimanual massed practice training with somatosensory stimulation: a pilot study. *J. Neurol. Phys. Ther.* **34**, 193–201 (2010).
40. Kumru, H. et al. Transcutaneous electrical neuromodulation of the cervical spinal cord depends both on the stimulation intensity and the degree of voluntary activity for training. a pilot study. *J. Clin. Med.* **10**, 3278 (2021).
41. Jo, H. J. & Perez, M. A. Corticospinal-motor neuronal plasticity promotes exercise-mediated recovery in humans with spinal cord injury. *Brain* **143**, 1368–1382 (2020).
42. Courtine, G., Harkema, S. J., Dy, C. J., Gerasimenko, Y. P. & Dyhre-Poulsen, P. Modulation of multisegmental monosynaptic responses in a variety of leg muscles during walking and running in humans. *J. Physiol.* **582**, 1125–1139 (2007).
43. National Spinal Cord Injury Statistical Center. Traumatic Spinal Cord Injury Facts and Figures at a Glance. <https://msktc.org/sites/default/files/SCI-Facts-Figs-2022-Eng-508.pdf> (2022).
44. Gomes-Osman, J., Tibbett, J. A., Poe, B. P. & Field-Fote, E. C. Priming for improved hand strength in persons with chronic tetraplegia: a comparison of priming-augmented functional task practice, priming alone, and conventional exercise training. *Front. Neurol.* **7**, 242 (2017).
45. Hoffman, L. & Field-Fote, E. Effects of practice combined with somatosensory or motor stimulation on hand function in persons with spinal cord injury. *Top. Spinal Cord. Inj. Rehabil.* **19**, 288–299 (2013).
46. Beekhuizen, K. S. & Field-Fote, E. C. Sensory stimulation augments the effects of massed practice training in persons with tetraplegia. *Arch. Phys. Med. Rehabil.* **89**, 602–608 (2008).
47. Diong, J. et al. Incidence and predictors of contracture after spinal cord injury—a prospective cohort study. *Spinal Cord* **50**, 579–584 (2012).
48. Garcia-Arguello, L. Y. et al. Infections in the spinal cord-injured population: a systematic review. *Spinal Cord* **55**, 526–534 (2017).
49. Waters, R. L., Adkins, R. H., Yakura, J. S. & Sie, I. Motor and sensory recovery following incomplete tetraplegia. *Arch. Phys. Med. Rehabil.* **75**, 306–311 (1994).
50. Mateo, S., Marco, J. D., Cucherat, M., Gueyffier, F. & Rode, G. Inconclusive efficacy of intervention on upper-limb function after tetraplegia: a systematic review and meta-analysis. *Ann. Phys. Rehabil. Med.* **63**, 230–240 (2020).
51. Kalsi-Ryan, S. et al. Outcome of the upper limb in cervical spinal cord injury: profiles of recovery and insights for clinical studies. *J. Spinal Cord Med.* **37**, 503–510 (2014).
52. Strollo, P. J. et al. Upper-airway stimulation for obstructive sleep apnea. *N. Engl. J. Med.* **370**, 139–149 (2014).
53. Anand, A. et al. Ketamine versus ECT for nonpsychotic treatment-resistant major depression. *N. Engl. J. Med.* **388**, 2315–2325 (2023).
54. Pluymaekers, N. A. H. A. et al. Early or delayed cardioversion in recent-onset atrial fibrillation. *N. Engl. J. Med.* **380**, 1499–1508 (2019).

55. Blumberger, D. M. et al. Effectiveness of theta burst versus high-frequency repetitive transcranial magnetic stimulation in patients with depression (THREE-D): a randomised non-inferiority trial. *Lancet* **391**, 1683–1692 (2018).
56. Amundsen, C. L. et al. OnabotulinumtoxinA vs sacral neuromodulation on refractory urgency urinary incontinence in women: a randomized clinical trial. *JAMA* **316**, 1366–1374 (2016).
57. Martínez-Fernández, R. et al. Randomized trial of focused ultrasound subthalamotomy for Parkinson's disease. *N. Engl. J. Med.* **383**, 2501–2513 (2020).
58. Kupsch, A. et al. Pallidal deep-brain stimulation in primary generalized or segmental dystonia. *N. Engl. J. Med.* **355**, 1978–1990 (2006).
59. Mallet, L. et al. Subthalamic nucleus stimulation in severe obsessive–compulsive disorder. *N. Engl. J. Med.* **359**, 2121–2134 (2008).
60. Rowald, A. et al. Recovery of trunk and leg motor functions within one day after chronic complete paralysis. *Nat. Med.* (in the press).
61. Lammertse, D. et al. Guidelines for the conduct of clinical trials for spinal cord injury as developed by the ICCP panel: clinical trial design. *Spinal Cord* **45**, 232–242 (2007).
62. Milekovic, T. et al. A spinal cord neuroprosthesis for locomotor deficits due to Parkinson's disease. *Nat. Med.* **29**, 2854–2865 (2023).

Publisher's note Springer Nature remains neutral with regard to jurisdictional claims in published maps and institutional affiliations.

Open Access This article is licensed under a Creative Commons Attribution 4.0 International License, which permits use, sharing, adaptation, distribution and reproduction in any medium or format, as long as you give appropriate credit to the original author(s) and the source, provide a link to the Creative Commons licence, and indicate if changes were made. The images or other third party material in this article are included in the article's Creative Commons licence, unless indicated otherwise in a credit line to the material. If material is not included in the article's Creative Commons licence and your intended use is not permitted by statutory regulation or exceeds the permitted use, you will need to obtain permission directly from the copyright holder. To view a copy of this licence, visit <http://creativecommons.org/licenses/by/4.0/>.

© The Author(s) 2024

¹Departments of Rehabilitation Medicine, Electrical & Computer Engineering, Physiology & Biophysics and Center for Neurotechnology, University of Washington, Seattle, WA, USA. ²Shepherd Center, Crawford Research Institute and Department of Rehabilitation Medicine, Emory University School of Medicine, Atlanta, GA, USA. ³Department of Physical Therapy, Craig Hospital, Englewood, CO, USA. ⁴Sint Maartenskliniek, Revalidatiegeneeskunde, Nijmegen, The Netherlands. ⁵Department of Physical Medicine and Rehabilitation, Harvard Medical School, Boston, MA, USA. ⁶Spaulding Rehabilitation Hospital, Charlestown, MA, USA. ⁷KITE Research Institute|Toronto Rehab, University Health Network, Toronto, Ontario, Canada. ⁸Scottish Centre for Innovation in Spinal Cord Injury, Queen Elizabeth National Spinal Injuries Unit, Queen Elizabeth University Hospital, Glasgow, UK. ⁹Amsterdam Rehabilitation Research Center | Reade, Amsterdam, The Netherlands. ¹⁰Faculty of Behavioral and Movement Sciences, Vrije Universiteit Amsterdam, Amsterdam Movement Sciences, Amsterdam, The Netherlands. ¹¹ICORD and Division of Physical Medicine and Rehabilitation, University of British Columbia, Vancouver, British Columbia, Canada. ¹²Department of Rehabilitation Medicine, University of Minnesota School of Medicine, Minneapolis, MN, USA. ¹³Department of Physical Medicine and Rehabilitation, Rehabilitation Medicine Research Center, Mayo Clinic, Rochester, MN, USA. ¹⁴Department of Neurological Surgery, Miller School of Medicine, University of Miami, Miami, FL, USA. ¹⁵Miami Project to Cure Paralysis, Miami, FL, USA. ¹⁶Thomas Jefferson University Hospital, Philadelphia, PA, USA. ¹⁷Departments of Rehabilitation and Human Performance and Medicine, James J. Peters VA Medical Center, Icahn School of Medicine at Mount Sinai, New York, NY, USA. ¹⁸Department of Research and Development, James J. Peters VA Medical Center, Icahn School of Medicine at Mount Sinai, New York, NY, USA. ¹⁹ONWARD Medical, Lausanne, Switzerland. ²⁰Glenrose Rehabilitation Hospital, Alberta Health Services, Edmonton, Alberta, Canada. ²¹Department of Medicine, University of Alberta, Edmonton, Alberta, Canada. ²²NeuroX Institute and Brain Mind Institute, School of Life Sciences, Swiss Federal Institute of Technology (EPFL), Geneva, Switzerland. ²³Department of Clinical Neuroscience, Lausanne University Hospital (CHUV) and University of Lausanne (UNIL), Lausanne, Switzerland. ²⁴Defitech Center for Interventional Neurotherapies (NeuroRestore), EPFL/CHUV/UNIL, Lausanne, Switzerland. ²⁵NeuroRestore, NeuroX Institute, School of Life Sciences, Swiss Federal Institute of Technology (EPFL), Lausanne, Switzerland. ²⁶These authors contributed equally: Chet Moritz, Edelle C. Field-Fote, Candace Tefertiller. ✉e-mail: gregoire.courtine@epfl.ch

Methods

Trial oversight

We conducted this trial according to the principles of the Declaration of Helsinki and Good Clinical Practice guidelines. The trial was conducted at 14 sites located in the United States, Canada, United Kingdom and The Netherlands. The trial and recruitment materials were approved by institutional review boards or ethics committees at each trial site as well as central approval from the Advarra institutional review board. An independent Data Safety Monitoring Board regularly reviewed the ongoing trial and could advise the sponsor to stop the trial for safety. The trial was sponsored by ONWARD Medical, which managed the trial through contract research organizations, provided the ARC^{EX} devices and provided field support for study investigators. Statistical analysis was performed by an independent statistician. All participants provided written informed consent.

Participants

The trial included adult participants aged 22–75 years who had sustained a traumatic, non-progressive cervical (C2–C8) SCI more than 12 months before their enrollment. Only participants with American Spinal Injury Association (ASIA) Impairment Scale (AIS) classification⁶³ B, C or D who presented with a GRASSP-Prehension Performance⁶⁴ score greater than or equal to 10 or a GRASSP-Strength⁶⁴ score greater than or equal to 30 were considered for enrollment. The participants who were prescribed anti-spasticity medications had to reduce their total baclofen dose to less than 30 mg per day before enrollment if needed and remain on stable medications throughout the study. All participants were capable of providing written informed consent.

Inclusion criteria specifically included:

1. At least 22 years of age and no older than 75 years at the time of enrollment
2. Non-progressive cervical SCI from C2–C8 inclusive
3. AIS classification B, C or D
4. Indicated for upper extremity training procedures by the participant's treating physician, occupational therapist or physical therapist
5. GRASSP-Prehension score ≥ 10 or GRASSP-Strength score ≥ 30
6. Minimum 12 months after injury
7. If prescribed anti-spasticity or pain medications, must be at stable dose for at least 4 weeks before commencing study procedures
8. Capable of providing informed consent

Exclusion criteria specifically included:

1. Has uncontrolled cardiopulmonary disease or cardiac symptoms as determined by the investigator
2. Has any unstable or significant medical condition that is likely to interfere with study procedures or likely to confound study endpoint evaluations, such as severe neuropathic pain, depression, mood disorders or other cognitive disorders
3. Has been diagnosed with autonomic dysreflexia that is severe, unstable and uncontrolled
4. Requires ventilator support
5. Has an autoimmune etiology of spinal cord dysfunction/injury
6. History of additional neurologic disease, such as stroke, multiple sclerosis and traumatic brain injury

Trial design

The Up-LIFT trial was designed by the sponsor (ONWARD Medical) and the investigators as a prospective, single-arm, sequential treatment, multicenter, open-label, non-significant risk trial to evaluate the safety and efficacy of ARC^{EX} Therapy to improve the recovery of arm and hand functions in people with chronic cervical SCI. This design enabled participants to serve as their own controls, which is the most appropriate

design to control for the large variation among participants in baseline impairment, potential for responsiveness and optimal stimulation dose. As an added benefit, this design enabled a comparison of the influence of ARC^{EX} augmented rehabilitation to rehabilitation alone within the same participants. There was no concurrent control group. This trial design has a long history of application in pivotal multicenter trials involving neuromodulation therapies^{52–56} and was established after extensive interactions with the FDA that involved careful consideration of alternative designs, including randomized control designs and cross-over designs. The full pre-registered clinical protocol is provided in the Supplementary Information.

The results of this prospective, single-arm, sequential treatment, multicenter, open-label, non-significant risk trial represent the collective efforts from 14 neurorehabilitation centers in North America and Europe that are led by clinicians and researchers with extensive experience in rehabilitation medicine for people with SCI. All sites received training on all protocols, which were standardized across the centers.

All participants enrolled in the clinical trial underwent an intensive, standardized in-clinic rehabilitation program⁴⁴ over a period of 2 months (Fig. 2). After this period, participants continued the same rehabilitation program with the addition of ARC^{EX} Therapy for two additional months. ARC^{EX} Therapy was applied during the entire session of rehabilitation to facilitate movement. Throughout the study, participants completed a minimum of 12 and a maximum of 20 in-clinic rehabilitation sessions per month. All performance metrics were assessed at enrollment and every month until completion of the study (Fig. 2). All assessments were performed in the absence of stimulation and are detailed in the protocol available online.

ARC^{EX} Therapy was delivered with a research version of the ARC^{EX} device, termed the LIFT device. The device includes two surface electrodes that were positioned in between the vertebral processes located generally one vertebral segment rostral and one vertebral segment caudal to the site of injury. Two large return electrodes were positioned over the iliac crests or clavicles. Stimulation was delivered at 30 Hz with a 10-kHz carrier frequency overlay, which consisted of 10 pulses with a 10-kHz frequency and 100- μ s pulse width⁶⁵ (Fig. 1a and Extended Data Fig. 1). The amplitude of stimulation was configured based on motor thresholds, absence of induced movements and patient comfort (Supplementary Information). This principle resulted in a broad distribution of stimulation amplitudes that was expected based on the diversity of body habitus of the participants enrolled in the study (Extended Data Fig. 1). All stimulation parameters and electrode locations are reported in Extended Data Fig. 1.

Endpoints

The primary effectiveness endpoint tested the hypothesis that most of the participants would demonstrate significant improvements in both strength and functional performance domains from the end of the rehabilitation-alone period to the end of the ARC^{EX} Therapy period. Participants were considered responders if they met MID criteria determined with Cohen's effect size method⁶⁶ for at least one outcome in each of the strength and functional performance domains. Outcomes related to the strength domain included the ISNCSCI-UEMS⁶⁷ (MID = 2-point improvement), the GRASSP-Strength score⁶⁴ (MID = 4-point improvement), pinch force (MID = greater than or equal to 2.4-N improvement) and grasp force (MID = greater than or equal to 6-N improvement). Outcomes related to the functional domain included the GRASSP-Prehension Performance score⁶⁴ (MID = 2-point improvement) and the CUE-T⁶⁸ (MID = 4-point improvement). The primary safety endpoint for the Up-LIFT trial was the incidence of serious adverse events related to the use of ARC^{EX} Therapy.

Secondary effectiveness endpoints included the superiority of responder rates after completion of ARC^{EX} Therapy compared to during the rehabilitation-alone period as well as changes in single outcomes between enrollment and the end of the rehabilitation-alone

period compared to between enrollment and the end of the ARC^{EX} Therapy period. These secondary effectiveness endpoints were hierarchically ordered a priori in the following sequence: pinch force, GRASSP-Prehension Performance score⁶⁴, GRASSP-Strength score⁶⁴, ISNCSCI-UEMS⁶⁷, ISNCSCI TSS⁶⁷, EQ-5D-5L score⁶⁹, SCIM III⁷⁰ and WHOQOL-BREF score⁷¹. The secondary safety endpoint was the incidence of all adverse events and serious adverse events in the trial.

Exploratory endpoints included additional outcomes that measured changes in the quality of life and the long-term consequences of SCI. These outcomes included the NRS for pain, the International Spinal Cord Injury Pain Data Set (ISCIPDS)⁷², the MOS Sleep Scale⁷³, a subset of scores within the SCIM III⁷⁰, the GRASSP-Sensibility score⁶⁴, the PSFS⁷⁴, subset scores within the EQ-5D-5L⁶⁹ and the WHOQOL-BREF⁷¹, the International Standards to document remaining Autonomic Function after Spinal Cord Injury (ISAFSCI)⁷⁵, the Patient Health Questionnaire-9 (PHQ-9)⁷⁶ and the Global Impression of Change (Clinician and Patient)⁷⁷. The functional profile of responders versus non-responders was also explored.

Statistical analyses

A statistical plan was discussed and agreed upon with the FDA. The pre-registered statistical plan is provided in the Supplementary Information. A sample of 65 participants was calculated assuming a minimum power of 80%, a two-sided type I error of 10%, a responder rate of 67%, a performance goal of 50% and a 25% drop-out rate. All effectiveness endpoints were assessed within pre-specified modified intention-to-treat populations, wherein only participants who underwent at least 24 sessions (average of 12 sessions per month) during the rehabilitation-alone period and at least 24 sessions during the ARC^{EX} Therapy period were included in the analysis. This minimum number of exposures to both interventions was required to perform comparisons between the outcomes of the rehabilitation-alone and ARC^{EX} Therapy periods. All participants exposed to a study procedure were included in the safety analysis population.

The primary effectiveness endpoint was evaluated using a one-sided exact binomial test to address the hypothesis that the proportion of responders exceeded 50%. Secondary effectiveness endpoints assessed the superiority of improvements after ARC^{EX} Therapy when compared to rehabilitation alone. The superiority of responder rates in response to ARC^{EX} Therapy compared to rehabilitation alone was assessed using McNemar's test. Identified secondary effectiveness outcomes were then assessed in hierarchical descending order, whereby downstream hypotheses were considered non-significant as soon as an endpoint was not met. Each secondary effectiveness outcome was tested with a paired one-sided *t*-test or a Wilcoxon signed-rank test, as appropriate, with a type I error rate of 5%. Across each secondary effectiveness outcome within the hierarchy, the change from enrollment to rehabilitation alone was compared to the change from enrollment to completion of ARC^{EX} Therapy. Descriptive statistics on additional outcomes in the primary and secondary endpoints were also conducted.

Exploratory endpoints were tested with a paired one-sided *t*-test or a Wilcoxon signed-rank test, as appropriate, with a type I error rate of 5%. Additional post hoc analyses included the identification of initial baseline characteristics that best predicted responder status as well as time-course effects for each of the primary and secondary outcome measures, tested with a repeated-measures ANOVA and post hoc testing using Tukey's honest significant difference (HSD) method and a mixed model analysis of box and block scores, comparing rehabilitation alone to ARC^{EX} Therapy. The former analysis included sequential logistic regression models, whereby participants were binarized into two groups: above or below a single numerical threshold^{78,79}. Odds ratios were then calculated, which reflected the odds of being a responder based on sequential thresholds for each outcome measure tested in the primary and secondary endpoints. The sequential models were

halted when the odds ratio crossed 1, indicating a threshold above which participants demonstrated a positive likelihood of responding to ARC^{EX} Therapy. The latter analysis was completed as a one-way ANOVA with Tukey's HSD post hoc testing for each outcome measure. Analyses were performed with SAS software, version 9.4 (SAS Institute). Details are provided in the Supplementary Information.

Reporting summary

Further information on research design is available in the Nature Portfolio Reporting Summary linked to this article.

References

- Kirshblum, S. & Waring, W. Updates for the International Standards for Neurological Classification of Spinal Cord Injury. *Phys. Med. Rehabil. Clin. North Am.* **25**, 505–517 (2014).
- Kalsi-Ryan, S. et al. The graded redefined assessment of strength sensibility and prehension: reliability and validity. *J. Neurotrauma* **29**, 905–914 (2012).
- Gerasimenko, Y. et al. Transcutaneous electrical spinal-cord stimulation in humans. *Ann. Phys. Rehabil. Med.* **58**, 225–231 (2015).
- Selya, A. S., Rose, J. S., Dierker, L. C., Hedeker, D. & Mermelstein, R. J. A practical guide to calculating Cohen's f^2 , a measure of local effect size, from PROC MIXED. *Front. Psychol.* **3**, 111 (2012).
- Kirshblum, S. C. et al. Reference for the 2011 revision of the International Standards for Neurological Classification of Spinal Cord Injury. *J. Spinal Cord Med.* **34**, 547–554 (2011).
- Marino, R. J., Kern, S. B., Leiby, B., Schmidt-Read, M. & Mulcahey, M. J. Reliability and validity of the capabilities of upper extremity test (CUE-T) in subjects with chronic spinal cord injury. *J. Spinal Cord Med.* **38**, 498–504 (2015).
- Herdman, M. et al. Development and preliminary testing of the new five-level version of EQ-5D (EQ-5D-5L). *Qual. Life Res.* **20**, 1727–36 (2011).
- Catz, A., Itzkovich, M., Agranov, E., Ring, H. & Tamir, A. SCIM—spinal cord independence measure: a new disability scale for patients with spinal cord lesions. *Spinal Cord* **35**, 850–856 (1997).
- Jang, Y., Hsieh, C.-L., Wang, Y.-H. & Wu, Y.-H. A validity study of the WHOQOL-BREF assessment in persons with traumatic spinal cord injury. *Arch. Phys. Med. Rehabil.* **85**, 1890–1895 (2004).
- Widerström-Noga, E. et al. The international spinal cord injury pain basic data set. *Spinal Cord* **46**, 818–823 (2008).
- Measuring Functioning and Well-Being: The Medical Outcomes Study Approach* (eds Stewart, A. & Ware, J.) (RAND, 1992); <https://doi.org/10.7249/CB361>
- Mills, P. B., Vakil, A. P., Phillips, C., Kei, L. & Kwon, B. K. Intra-rater and inter-rater reliability of the Penn Spasm Frequency Scale in people with chronic traumatic spinal cord injury. *Spinal Cord* **56**, 569–574 (2018).
- Contributors et al. International standards to document remaining autonomic function after spinal cord injury. *J. Spinal Cord Med.* **35**, 201–210 (2012).
- Kroenke, K., Spitzer, R. L. & Williams, J. B. W. The PHQ-9: validity of a brief depression severity measure. *J. Gen. Intern. Med.* **16**, 606–613 (2001).
- Kamper, S. J., Maher, C. G. & Mackay, G. Global rating of change scales: a review of strengths and weaknesses and considerations for design. *J. Man. Manip. Ther.* **17**, 163–170 (2009).
- Squair, J. W. et al. Empirical targets for acute hemodynamic management of individuals with spinal cord injury. *Neurology* **93**, e1205–e1211 (2019).
- Squair, J. W. et al. Spinal cord perfusion pressure predicts neurologic recovery in acute spinal cord injury. *Neurology* **89**, 1660–1667 (2017).

Acknowledgements

This study was supported by ONWARD Medical. We are grateful to J. Ravier for the illustrations.

Author contributions

C.M., E.C.F.-F., C.T., J.D'.A., G.C. and J.W.S. contributed to the analyses and/or design of the study. All study investigators contributed to acquisition or interpretation of the data. G.C. and J.W.S. wrote the paper, in collaboration with all authors and the sponsor. All authors edited the paper.

Funding

Open access funding provided by EPFL Lausanne.

Competing interests

The Up-LIFT study investigators hold various patents in relation with the present work, act as consultants to ONWARD Medical and may be minority shareholders of ONWARD Medical.

Additional information

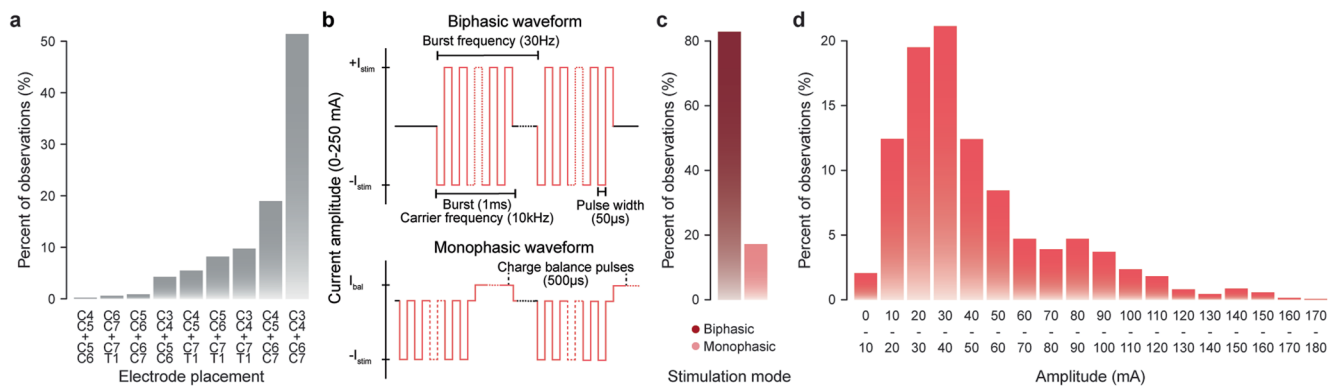
Extended data is available for this paper at <https://doi.org/10.1038/s41591-024-02940-9>.

Supplementary information The online version contains supplementary material available at <https://doi.org/10.1038/s41591-024-02940-9>.

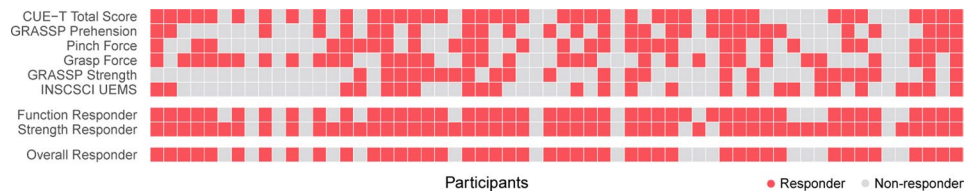
Correspondence and requests for materials should be addressed to Gregoire Courtine.

Peer review information *Nature Medicine* thanks Nataša Kežar and the other, anonymous, reviewer(s) for their contribution to the peer review of this work. Primary Handling Editor: Jerome Staal, in collaboration with the *Nature Medicine* team.

Reprints and permissions information is available at www.nature.com/reprints.

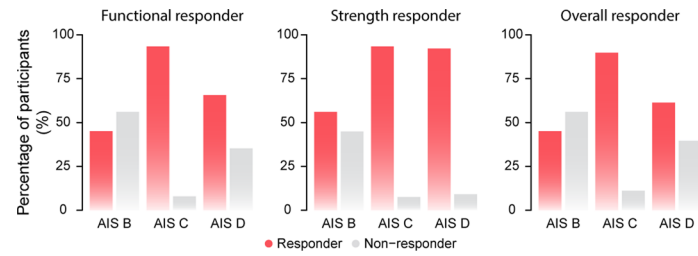


Extended Data Fig. 1 | Location and stimulation parameters across study participants and sessions. a, Location of the two cathodes with respect to spinal segments. **b**, Profile of electrical stimulation waveforms. **c**, Percent of sessions with monophasic versus biphasic stimulation models. **d**, Range of amplitudes delivered during ARCEX Therapy.

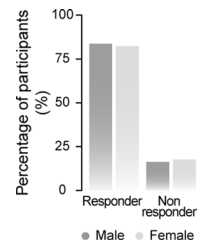


Extended Data Fig. 2 | Responder status for each outcome of the strength and functional domains. Participants were considered responders for each outcome (top panel) if they met the minimally important difference (MID), which was calculated as the change in score between the beginning of the ARC^{EX} Therapy period and the end of the ARC^{EX} Therapy period. The beginning of the ARC^{EX} Therapy period coincides with the end of the rehabilitation alone period. Outcomes related to the functional domain included the Capabilities of Upper Extremity Test⁶⁸ (CUE-T; MID = 4-point improvement) and the GRASSP Prehension Performance score⁶⁴ (MID = 2-point improvement). Outcomes related to the strength domain included the Pinch force (MID = greater than

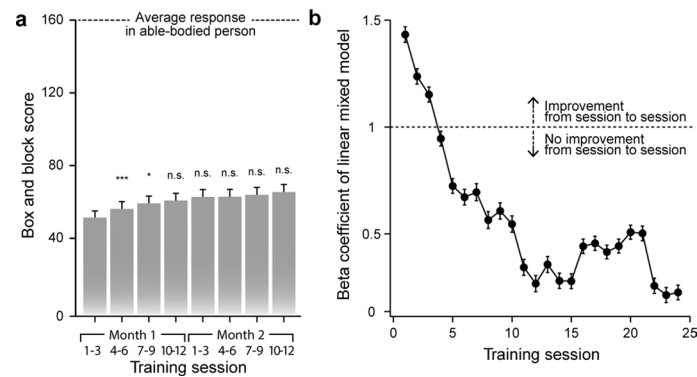
or equal to 2.4N improvement), Grasp force (MID = greater than or equal to 6N improvement), the GRASSP Strength score⁶⁴ (GRASSP-Strength; MID = 4-point improvement), and the International Standards for Neurological Classification of Spinal Cord Injury Upper Extremity Motor Score⁶⁷ (INSCSCI-UEMS; MID = 2-point improvement). To be classified as a 'Function Responder' or 'Strength Responder' participants must have met the MID criteria for at least one outcome in each domain. To be considered an 'Overall Responder', participants must have been classified as both a 'Function Responder' and a 'Strength Responder'. Color indicates responder status for each row.



Extended Data Fig. 3 | Influence of injury severity. The percentage of participants classified as responders versus non-responders are classified based on their American Spinal Injury Association Impairment Scale (AIS) at enrollment.

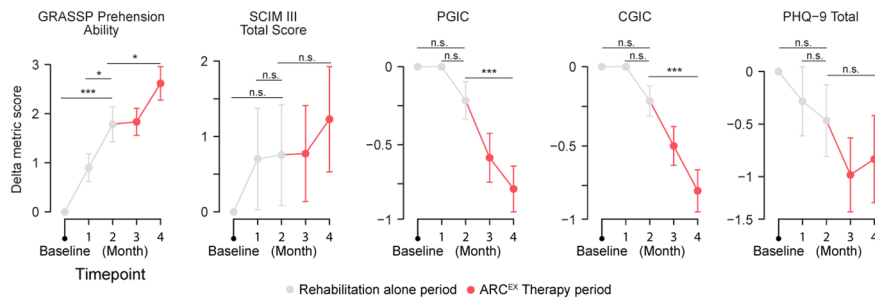


Extended Data Fig. 4 | Influence of sex. The percentage of participants classified as responders versus non-responders are classified by sex.



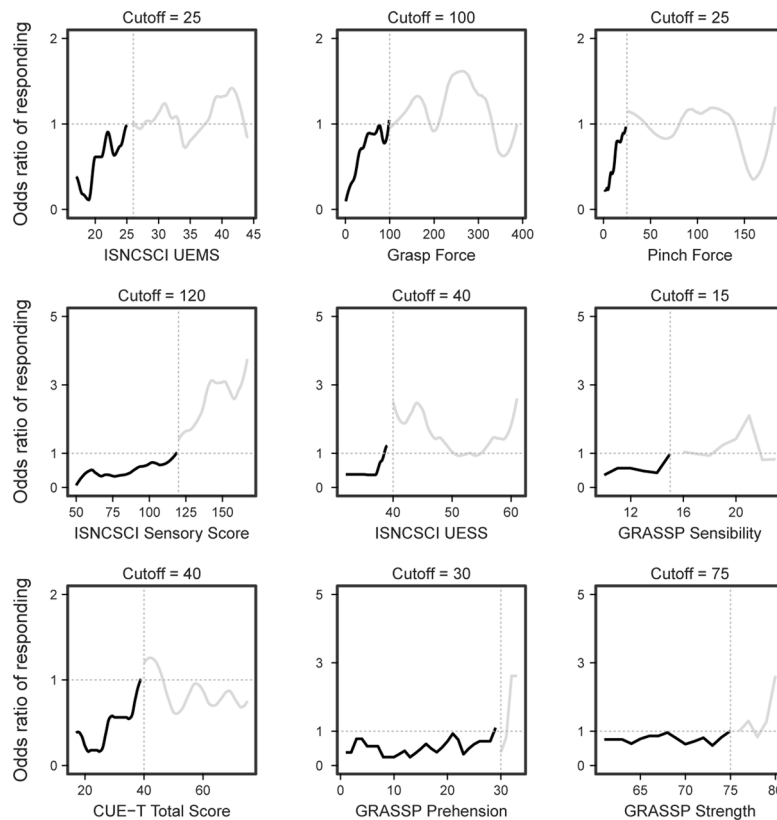
Extended Data Fig. 5 | Improvements of hand and arm functions plateau in response to intense rehabilitation well before the end of the rehabilitation alone period. **a**, During each training session, the participant completed the box and block test. These systematic quantifications allowed to monitor improvements in this task over the rehabilitation alone period. During the first three weeks of the rehabilitation alone period, we detected a significant increase in the scores in the box and block test, normalized to the baseline score at enrollment for each participant. No statistically significant improvement of scores was detected during the following 5 weeks of the rehabilitation alone period. Statistics refers to a repeated measures one-way ANOVA with post hoc testing using the Tukey HSD method. * indicates $p < 0.05$. ** indicates $p < 0.01$. *** indicates $p < 0.001$. n.s. indicates non-significant. Bar graph indicates mean and standard error of the mean for each time point. Statistics provided in

Supplementary Data 3. **b**, A rolling linear regression coefficient was calculated from the score of each box and block test for each participant using a mixed model linear regression. The dotted line coincides with a coefficient of one, above which improvements remain linear. Dot represents the coefficient of the linear model at each timepoint, and the whiskers represent the standard error of the mean on this model. The linear relationship between training sessions and improvements of scores in the box and block test vanished after three weeks (12 sessions) of rehabilitation alone, wherein the coefficient approached 0. Together these findings reveal the occurrence of a plateau in the improvement of arm and hand functions after three weeks of rehabilitation alone. Since participants performed the box and block test during each session, the initial improvement observed may be partially attributed to increased familiarity with the test through repeated practice.



Extended Data Fig. 6 | Effect of ARC^{EX} Therapy on additional secondary outcomes. Improvements in secondary outcome domains during the rehabilitation alone period, and during the ARC^{EX} Therapy period. Lower values of PGIC, CGIC and PHQ-9 represent improved quality of life. These results suggest that a longer period of ARC^{EX} Therapy may promote additional benefits.

Red color indicates the period of ARC^{EX} Therapy. Statistics represent one-way repeated measures ANOVA with Tukey HSD post-hoc testing. * = $p < 0.05$. ** = $p < 0.01$. *** = $p < 0.001$. Line graphs represent the mean and standard error of the mean for each outcome measure. Statistics provided in Supplementary Data 3.



Extended Data Fig. 7 | Identification of initial baseline characteristics that best predicted responder status. This analysis included sequential logistic regression models whereby participants were binarized into two groups: above or below a single numerical threshold^{78,79}. Odds ratios were then calculated, which reflected the odds of being a responder based on sequential thresholds for each outcome measure included in the primary and secondary effectiveness end

points. The sequential models were halted when the odds ratio crossed 1 (black traces), indicating a threshold above which participants demonstrated positive odds of responding to ARC^{EX} Therapy. This analysis revealed cutoffs for ISNCSCI-UEMS (cutoff = 25), Grasp force (cutoff = 100N), Pinch force (cutoff = 25N), CUE-T (cutoff = 40), ISNCSCI Sensory Score (cutoff = 120), ISNCSCI Upper Extremity Sensory Score (cutoff = 40), and GRASSP-Sensibility score (cutoff = 15).

Extended Data Table 1 | Patient-reported surveys related to quality of life, activities of daily living and impressions of change (modified intention-to-treat population)

	Rehabilitation Alone Δ Baseline		ARC ^{EX} Therapy Δ Baseline		ARC ^{EX} Difference Δ month 4- month 2	
	<i>Mean ± SD</i>	<i>p-value</i>	<i>Mean ± SD</i>	<i>p-value</i>	<i>Mean ± SD</i>	<i>p-value</i>
SCIM III Self-Care Subscore (0-20)	0.3 ± 2.2	0.253	0.6 ± 2.4	0.056	0.3 ± 1.1	0.007
SCIM III Upper Extremity Items (0-13)	0.2 ± 1.6	0.292	0.4 ± 1.6	0.029	0.3 ± 0.9	0.03
Patient Global Impression of Change (PGIC)	4.0 ± 1.1		3.4 ± 1.2		-0.6 ± 1.1	< 0.001
Clinician Global Impression of Change (CGIC)	4.2 ± 0.7		3.7 ± 1.1		-0.6 ± 0.9	<0.001
Patient Health Questionnaire-9	-0.5 ± 2.6	0.144	-0.8 ± 3.2	0.019	-0.4 ± 2.9	0.164

Plus-minus values are means ± SD. The modified intention-to-treat population included all participants who underwent at least 24 sessions (minimum 12 sessions per month) during the rehabilitation alone period and at least 24 sessions during the ARC^{EX} Therapy period (minimum 12 sessions per month). One-sided paired t-tests or Wilcoxon signed ranks tests were performed for each comparison, as appropriate (Rehabilitation alone: baseline to month 2; ARC^{EX} Therapy: baseline to month 4; and ARC^{EX} difference: month 2 to month 4).

Extended Data Table 2 | Additional domains within primary and secondary endpoints (modified intention-to-treat population)

	Rehabilitation Alone Δ Baseline		ARC ^{EX} Therapy Δ Baseline		ARC ^{EX} Difference Δ month 4- month 2	
	Mean ± SD	p-value	Mean ± SD	p-value	Mean ± SD	p-value
Pinch Force*	2.6 ± 16.7	0.351	7.3 ± 19.6	0.008	4.8 ± 16.1	0.002
Grasp Force*	10.5 ± 28.3	0.003	24.2 ± 35.0	< 0.001	13.7 ± 27.4	< 0.001
GRASSP Strength*	3.6 ± 6.6	< 0.001	6.4 ± 7.7	< 0.001	2.8 ± 5.4	< 0.001
Upper Extremity Motor Score* (UEMS)	0.2 ± 2.9	0.292	2.3 ± 3.8	< 0.001	2.2 ± 3.2	< 0.001
GRASSP Prehension Performance*	1.3 ± 3.7	0.004	2.9 ± 3.8	< 0.001	1.6 ± 2.9	< 0.001
CUE-T*	5.8 ± 6.5	< 0.001	11.1 ± 7.1	< 0.001	5.3 ± 5.3	< 0.001
Total Sensory Score (TSS) [†]	-1.8 ± 19.9	0.757	7.8 ± 21.0	0.003	9.6 ± 15.1	< 0.001
Upper Extremity Sensory Score	-0.2 ± 5.9	0.620	2.6 ± 6.8	0.002	2.9 ± 4.8	< 0.001
GRASSP Prehension Ability	1.8 ± 2.8	< 0.001	2.6 ± 2.6	< 0.001	0.8 ± 2.3	0.003
GRASSP Sensibility	0.0 ± 1.8	0.313	0.9 ± 2.3	0.002	0.9 ± 2.4	0.003

Plus-minus values are means ± SD. The modified intention-to-treat population included all participants who underwent at least 24 sessions (minimum 12 sessions per month) during the rehabilitation alone period and at least 24 sessions during the ARC^{EX} Therapy period (minimum 12 sessions per month). One-sided paired t-tests or Wilcoxon signed ranks tests were performed for each comparison, as appropriate (Rehabilitation alone: baseline to month 2; ARC^{EX} Therapy: baseline to month 4; and ARC^{EX} difference: month 2 to month 4). * included in primary efficacy outcome. † included in secondary efficacy outcomes.

Extended Data Table 3 | Detailed listing of adverse events (safety population)*

Events (MedDRA 23.0 SOC Preferred Term)	Prior to rehabilitation	Rehabilitation alone	ARC ^{EX} Therapy	Anytime
Eye disorders	0	1	0	1
Eye pain	0	1	0	1
Gastrointestinal disorders	0	11	8	19
Haemorrhoids	0	0	1	1
Inguinal hernia	0	1	0	1
Vomiting	0	1	0	1
Dyspepsia	0	2	0	2
Abdominal pain upper	0	1	2	3
Nausea	0	2	1	3
Toothache	0	1	2	3
Constipation	0	3	2	5
General disorders administration site conditions	0	3	10	13
Asthenia	0	0	1	1
Inflammation	0	0	1	1
Malaise	0	0	1	1
Medical device site reaction	0	0	1	1
Peripheral swelling	0	0	1	1
Pyrexia	0	0	1	1
Pain	0	0	2	2
Fatigue	0	3	2	5
Hepatobiliary disorders	0	1	0	1
Cholelithiasis	0	1	0	1
Immune system disorders	0	0	1	1
Drug hypersensitivity	0	0	1	1
Infections and Infestations	3	22	18	43
Infection	0	0	1	1
Lower respiratory tract infection	0	1	0	1
Onchomycosis	0	1	0	1
Respiratory tract infection	0	1	0	1
Tooth infection	0	0	1	1
COVID-19	0	2	6	8
Cystitis	0	3	1	4
Urinary tract infection	3	14	9	26
Ear and labyrinth disorders	0	0	1	1
Ear infection, ear pain	0	0	1	1
Injury, poisoning and procedural complications	2	18	13	33
Exposure to SARS-Co-V-2	0	0	1	1
Scratch	0	1	0	1
Spinal column injury	0	0	1	1
Thermal burn	0	1	0	1
Tooth injury	0	1	0	1

Extended Data Table 3 (continued) | Detailed listing of adverse events (safety population)*

Wound	0	0	1	1
Limb injury	0	2	0	2
Buttock injury	0	1	2	3
Contusion	0	2	1	3
Autonomic dysreflexia	0	0	4	4
Skin abrasion	0	3	1	4
Skin laceration	1	3	0	4
Fall	1	4	2	7
Investigations	0	2	2	4
Blood pressure decreased	0	1	0	1
Blood pressure increased	0	0	1	1
Heart rate increased	0	1	0	1
Respiratory rate increased	0	0	1	1
Metabolism and nutrient disorders	0	0	3	3
Decreased appetite	0	0	1	1
Dehydration	0	0	1	1
Gout	0	0	1	1
Musculoskeletal and connective tissue disorders	0	21	23	44
Arthralgia	0	1	0	1
Joint stiffness	0	0	1	1
Musculoskeletal chest pain	0	1	0	1
Musculoskeletal stiffness	0	1	2	3
Myalgia; musculoskeletal stiffness	0	0	1	1
Back pain	0	3	1	4
Neck pain	0	1	4	5
Myalgia	0	2	4	6
Pain in extremity	0	3	3	6
Muscle spasms	0	3	4	7
Muscle spasms; pain	0	2	0	2
Musculoskeletal pain	0	4	3	7
Nervous system disorders	0	5	13	18
Burning sensation	0	0	1	1
Poor quality sleep	0	0	1	1
Sensory loss	0	1	0	1
Sensory overload	0	0	1	1
Neuralgia	0	1	1	2
Paraesthesia	0	0	2	2
Headache	0	1	2	3
Dizziness	0	2	5	7
Psychiatric disorders	0	2	1	3
Attention deficit hyperactivity disorder	0	0	1	1
Depressed mood	0	1	0	1
Emotional distress	0	1	0	1
Renal and urinary disorders	0	3	12	15
Bladder pain	0	0	1	1
Incontinence	0	2	0	2

Extended Data Table 3 (continued) | Detailed listing of adverse events (safety population)*

Nephrolithiasis	0	0	2	2
Urinary incontinence	0	0	2	2
Urinary tract disorder	0	0	2	2
Bladder spasm	0	1	5	6
Respiratory, thoracic and mediastinal disorders	0	1	1	2
Cough	0	1	1	2
Skin and subcutaneous tissue disorders	0	8	10	18
Eczema	0	1	0	1
Nail cuticle fissure	0	1	0	1
Scab	0	0	1	1
Skin hyperpigmentation	0	1	0	1
Skin irritation	0	0	1	1
Decubitus ulcer	0	1	1	2
Blister	0	3	0	3
Erythema	0	1	3	4
Hyperhidrosis	0	0	4	4
Surgical and medical procedures	0	1	2	3
Wedge resection toenail	0	1	0	1
Cataract operation	0	0	2	2
Vascular disorders	0	6	10	16
Deep vein thrombosis	0	0	1	1
Pallor	0	0	1	1
Hypotension	0	2	1	3
Orthostatic hypotension	0	2	1	3
Hypertension	0	2	6	8

Extended Data Table 4 | Spinal cord injury sequelae (modified intention-to-treat population)

	Rehabilitation Alone Δ Baseline		ARC ^{EX} Therapy Δ Baseline		ARC ^{EX} Difference Δ month 4- month 2	
	Mean ± SD	p-value	Mean ± SD	p-value	Mean ± SD	p-value
Spasticity						
Penn Spasm Frequency Scale (Frequency)	-0.1 ± 0.8	0.21	-0.3 ± 0.9	0.009	-0.2 ± 0.7	0.011
Penn Spasm Frequency Scale (Severity)	-0.1 ± 0.5	0.15	-0.2 ± 0.7	0.04	-0.1 ± 0.6	0.11
Pain						
NRS Pain within last 24 hours	-0.1 ± 1.5	0.353	-0.3 ± 1.6	0.073	-0.2 ± 1.6	0.04
ISCIPDS – Sleep Interference within last week	-0.4 ± 2.6	0.104	-0.9 ± 2.6	0.002	-0.6 ± 2.3	0.06
Sleep – MOS Scale						
Shortness of Breath/Headache	-1.0 ± 12.5	0.311	-5.3 ± 18.7	0.017	-4.3 ± 16.9	0.03
Snoring	-6.8 ± 20.6	0.002	-10.5 ± 24.7	<0.001	-3.7 ± 20.1	0.09
Sleep Disturbance	-1.3 ± 15.5	0.264	-3.3 ± 16.4	0.034	-2.1 ± 13.4	0.12
Sleep Problems Index I	-0.3 ± 9.9	0.398	-2.7 ± 12.4	0.051	-2.3 ± 10.1	0.04
Sleep Problems Index II	-0.9 ± 9.9	0.135	-2.8 ± 12.7	0.047	-1.9 ± 9.6	0.07

Plus-minus values are means ± SD. The modified intention-to-treat population included all participants who underwent at least 24 sessions (minimum 12 sessions per month) during the rehabilitation alone period and at least 24 sessions during the ARC^{EX} Therapy period (minimum 12 sessions per month). One-sided paired t-tests or Wilcoxon signed ranks tests were performed for each comparison, as appropriate (Rehabilitation alone: baseline to month 2; ARC^{EX} Therapy: baseline to month 4; and ARC^{EX} difference: month 2 to month 4). Decreases in these outcomes represent improvements.

Corresponding author(s): Gregoire Courtine

Last updated by author(s): Mar 25, 2024

Reporting Summary

Nature Portfolio wishes to improve the reproducibility of the work that we publish. This form provides structure for consistency and transparency in reporting. For further information on Nature Portfolio policies, see our [Editorial Policies](#) and the [Editorial Policy Checklist](#).

Statistics

For all statistical analyses, confirm that the following items are present in the figure legend, table legend, main text, or Methods section.

n/a Confirmed

- The exact sample size (n) for each experimental group/condition, given as a discrete number and unit of measurement
- A statement on whether measurements were taken from distinct samples or whether the same sample was measured repeatedly
- The statistical test(s) used AND whether they are one- or two-sided
Only common tests should be described solely by name; describe more complex techniques in the Methods section.
- A description of all covariates tested
- A description of any assumptions or corrections, such as tests of normality and adjustment for multiple comparisons
- A full description of the statistical parameters including central tendency (e.g. means) or other basic estimates (e.g. regression coefficient) AND variation (e.g. standard deviation) or associated estimates of uncertainty (e.g. confidence intervals)
- For null hypothesis testing, the test statistic (e.g. F , t , r) with confidence intervals, effect sizes, degrees of freedom and P value noted
Give P values as exact values whenever suitable.
- For Bayesian analysis, information on the choice of priors and Markov chain Monte Carlo settings
- For hierarchical and complex designs, identification of the appropriate level for tests and full reporting of outcomes
- Estimates of effect sizes (e.g. Cohen's d , Pearson's r), indicating how they were calculated

Our web collection on [statistics for biologists](#) contains articles on many of the points above.

Software and code

Policy information about [availability of computer code](#)

Data collection

The trial was conducted at 14 sites located in the United States, Canada, United Kingdom, and the Netherlands. The trial and recruitment materials were approved by institutional review boards or ethics committees at each trial site, as well as central approval from Advarra institutional review board. An independent Data Safety Monitoring Board (DSMB) regularly reviewed the ongoing trial and could advise the sponsor to stop the trial for safety. The trial was sponsored by Onward Medical, which managed the trial through Contract Research Organizations, provided the ARCEX devices, and provided field support for study investigators. Statistical analysis was performed by an independent statistician. All participants provided written informed consent.

Data analysis

Analyses were performed with the use of SAS software, version 9.4 (SAS Institute). Details are provided in the Supplementary Appendix.

For manuscripts utilizing custom algorithms or software that are central to the research but not yet described in published literature, software must be made available to editors and reviewers. We strongly encourage code deposition in a community repository (e.g. GitHub). See the Nature Portfolio [guidelines for submitting code & software](#) for further information.

Data

Policy information about [availability of data](#)

All manuscripts must include a [data availability statement](#). This statement should provide the following information, where applicable:

- Accession codes, unique identifiers, or web links for publicly available datasets
- A description of any restrictions on data availability
- For clinical datasets or third party data, please ensure that the statement adheres to our [policy](#)

Data that supports the findings will be made available upon reasonable request to the corresponding authors and in Supplementary Data 1.

Research involving human participants, their data, or biological material

Policy information about studies with [human participants or human data](#). See also policy information about [sex, gender \(identity/presentation\), and sexual orientation](#) and [race, ethnicity and racism](#).

Reporting on sex and gender	All demographic information is provided in demographic tables.
Reporting on race, ethnicity, or other socially relevant groupings	Not relevant.
Population characteristics	No covariates were included in the pre-registered statistical analysis.
Recruitment	The trial was conducted at 14 sites located in the United States, Canada, United Kingdom, and the Netherlands. The trial and recruitment materials were approved by institutional review boards or ethics committees at each trial site, as well as central approval from Advarra institutional review board. An independent Data Safety Monitoring Board (DSMB) regularly reviewed the ongoing trial and could advise the sponsor to stop the trial for safety. The trial was sponsored by Onward Medical, which managed the trial through Contract Research Organizations, provided the ARCEX devices, and provided field support for study investigators. Statistical analysis was performed by an independent statistician. All participants provided written informed consent. Each site was responsible for their own recruitment activities. Templates for recruitment (online/paper) were provided to the sites by Onward. All recruitment activities were approved by the local IRBs/ethics committees.
Ethics oversight	The trial and recruitment materials were approved by institutional review boards or ethics committees at each trial site, as well as central approval from Advarra institutional review board.

Note that full information on the approval of the study protocol must also be provided in the manuscript.

Field-specific reporting

Please select the one below that is the best fit for your research. If you are not sure, read the appropriate sections before making your selection.

Life sciences Behavioural & social sciences Ecological, evolutionary & environmental sciences

For a reference copy of the document with all sections, see [nature.com/documents/nr-reporting-summary-flat.pdf](https://www.nature.com/documents/nr-reporting-summary-flat.pdf)

Life sciences study design

All studies must disclose on these points even when the disclosure is negative.

Sample size	A statistical plan was discussed and agreed upon with the FDA. The pre-registered statistical plan is provided in Supplementary Information. A sample of 65 participants was calculated assuming a minimum power of 80%, a two-sided type I error of 10%, a responder rate of 67%, a performance goal of 50%, and a 25% drop out rate. All effectiveness end points were assessed within prespecified modified-intent-to-treat populations, wherein only participants that underwent at least 24 sessions (average of 12 sessions per month) during the rehabilitation alone period and at least 24 sessions during the ARCEX Therapy period were included in the analysis. This minimum number of exposures to both interventions was required to perform comparisons between the outcomes of the rehabilitation alone and ARCEX Therapy periods. All participants exposed to a study procedure were included in the safety analysis population.
Data exclusions	From January 14 to December 24, 2021, a total of 65 participants underwent screening, and were enrolled in the Up-LIFT trial (Fig. 2). Sixty participants had completed the entire protocol and assessments by the end of June, 2022. One participant withdrew from the study prior to any study procedures, two withdrew during the rehabilitation alone period for personal reasons unrelated to the study, and two withdrew during the ARCEX Therapy period, one due to protocol non-adherence and one for personal reasons.
Replication	The nature of this safety and efficacy trial did not require replication.
Randomization	No randomization was performed.
Blinding	All statistical analysis was performed by an independent blinded statistician.

Reporting for specific materials, systems and methods

We require information from authors about some types of materials, experimental systems and methods used in many studies. Here, indicate whether each material, system or method listed is relevant to your study. If you are not sure if a list item applies to your research, read the appropriate section before selecting a response.

Materials & experimental systems

n/a	Involvement	Material/System
<input checked="" type="checkbox"/>	<input type="checkbox"/>	Antibodies
<input checked="" type="checkbox"/>	<input type="checkbox"/>	Eukaryotic cell lines
<input checked="" type="checkbox"/>	<input type="checkbox"/>	Palaeontology and archaeology
<input checked="" type="checkbox"/>	<input type="checkbox"/>	Animals and other organisms
<input type="checkbox"/>	<input checked="" type="checkbox"/>	Clinical data
<input checked="" type="checkbox"/>	<input type="checkbox"/>	Dual use research of concern
<input checked="" type="checkbox"/>	<input type="checkbox"/>	Plants

Methods

n/a	Involvement	Method
<input checked="" type="checkbox"/>	<input type="checkbox"/>	ChIP-seq
<input checked="" type="checkbox"/>	<input type="checkbox"/>	Flow cytometry
<input checked="" type="checkbox"/>	<input type="checkbox"/>	MRI-based neuroimaging

Clinical data

Policy information about [clinical studies](#)

All manuscripts should comply with the ICMJE [guidelines for publication of clinical research](#) and a completed [CONSORT checklist](#) must be included with all submissions.

Clinical trial registration	NCT04697472
Study protocol	Supplementary Appendix.
Data collection	From January 14 to December 24, 2021, a total of 65 participants underwent screening, and were enrolled in the Up-LIFT trial (Fig. 2). Sixty participants had completed the entire protocol and assessments by the end of June, 2022. One participant withdrew from the study prior to any study procedures, two withdrew during the rehabilitation alone period for personal reasons unrelated to the study, and two withdrew during the ARCEX Therapy period, one due to protocol non-adherence and one for personal reasons. All clinical sites are listed in the study protocol.
Outcomes	<p>The primary effectiveness end point tested the hypothesis that the majority of the participants would demonstrate significant improvements in both strength and functional performance domains from the end of the rehabilitation alone period to the end of the ARCEX Therapy period. Participants were considered responders if they met minimally important difference (MID) criteria determined with Cohen's effect size method 66 for at least one outcome in each of the strength and functional performance domains. Outcomes related to the strength domain included the International Standards for Neurological Classification of Spinal Cord Injury Upper Extremity Motor Score 67 (ISNCSCI-UEMS; MID = 2-point improvement), the GRASSP Strength score 64 (GRASSP-Strength; MID = 4-point improvement), Pinch force (MID = greater than or equal to 2.4N improvement), and Grasp force (MID = greater than or equal to 6N improvement). Outcomes related to the functional domain included the GRASSP Prehension Performance score 64 (MID = 2-point improvement) and the Capabilities of Upper Extremity Test 68 (CUE-T; MID = 4-point improvement). The primary safety end point for the Up-LIFT trial was the incidence of serious adverse events (SAEs) related to the use of ARCEX Therapy.</p> <p>Secondary effectiveness end points included the superiority of responder rates following completion of ARCEX Therapy compared to during the rehabilitation alone period, as well as changes in single outcomes between enrollment and the end of the rehabilitation alone period compared to between enrollment and the end of the ARCEX Therapy period. These secondary effectiveness end points were hierarchically ordered a priori in the following sequence: Pinch force, GRASSP-Prehension Performance score 64, GRASSP-Strength score 64, ISNCSCI-UEMS 67, ISNCSCI Total sensory score 67, the EuroQol five-dimensional five-level (EQ-5D-5L) score 69, Spinal Cord Independence Measure (SCIM III) 70, and the Abbreviated World Health Organization Quality of Life questionnaire (WHOQOL-Bref) score 71. The secondary safety end point was the incidence of all adverse events (AEs) and SAEs in the trial. Exploratory end points included additional outcomes that measured changes in the quality of life and the long-term consequences of SCI. These outcomes included the Numerical Rating Scale (NRS) for pain, the International Spinal Cord Injury Pain Data Set (ISCI-PDS) 72, the Medical Outcomes Study (MOS) Sleep Scale 73, a subset of scores within the Spinal Cord Independence Measure (SCIM III) 70, the GRASSP Sensibility Score 64, the Penn Spasm Frequency Scale (PSFS) 74, subset scores within the EuroQol 5 Dimension 5 Level Questionnaire (EQ-5D-5L) 69 and the WHOQOL-BREF 71, the International Standards to document remaining Autonomic Function after Spinal Cord Injury (ISAFSCI) 75, the Patient Health Questionnaire (PHQ-9) 76, and the Global Impression of Change (Clinician and Patient) 77. The functional profile of responders versus non-responders was also explored.</p>

Plants

Seed stocks

Report on the source of all seed stocks or other plant material used. If applicable, state the seed stock centre and catalogue number. If plant specimens were collected from the field, describe the collection location, date and sampling procedures.

Novel plant genotypes

Describe the methods by which all novel plant genotypes were produced. This includes those generated by transgenic approaches, gene editing, chemical/radiation-based mutagenesis and hybridization. For transgenic lines, describe the transformation method, the number of independent lines analyzed and the generation upon which experiments were performed. For gene-edited lines, describe the editor used, the endogenous sequence targeted for editing, the targeting guide RNA sequence (if applicable) and how the editor was applied.

Authentication

Describe any authentication procedures for each seed stock used or novel genotype generated. Describe any experiments used to assess the effect of a mutation and, where applicable, how potential secondary effects (e.g. second site T-DNA insertions, mosaicism, off-target gene editing) were examined.