



Epidemiology and Real-World Treatment of Incident Diffuse Large B-cell Lymphoma (DLBCL): A German Claims Data Analysis

Scarlette Pacis · Anna Bolzani · Alexander Heuck · Klaus Gossens ·
Mathias Kruse · Björn Fritz · Ulf Maywald · Thomas Wilke ·
Christian Kunz

Received: September 29, 2023 / Accepted: January 26, 2024 / Published online: February 20, 2024
© The Author(s) 2024

ABSTRACT

Introduction: The objective of this study was to investigate the prevalence, incidence, and treatment patterns (treatment regimens, switches, duration) for diffuse large B-cell lymphoma (DLBCL) in a real-world setting.

Methods: This was a retrospective German claims data analysis of patients with DLBCL diagnosed between January 1, 2012, and December 31, 2020. The prevalence and cumulative incidence of DLBCL were found for 2019/2020. Line of treatment (LOT) and treatment setting from first DLBCL diagnosis to end

of follow-up were described. Kaplan–Meier overall survival (OS) estimates since DLBCL diagnosis and start of treatment lines were calculated.

Results: Overall, 2633 incident DLBCL cases were identified (median age 75 years, 51% male). Of these, 2119 patients received at least one DLBCL-related treatment (LOT1), and 1567 patients died during follow-up. In 2019/2020, the prevalence and cumulative incidence of DLBCL was 34.8/36.7 per 100,000 patients and 14.0/12.7 per 100,000 patients, respectively. For LOT1, 1922 patients were given a chemotherapy-based regimen (1530 with CD20 antibodies). A total of 403 patients were administered a second line (LOT2), of which 183 patients received a CD20 antibody-containing chemotherapy regimen and 100 patients received stem cell transplantation or chimeric antigen receptor (CAR)-T therapy. Of the 136 LOT3+ treatments, 74 were chemotherapy regimens (54 with CD20 antibodies) and 18 were kinase inhibitors. The median time between treatment lines was less than 6 months. Among patients with at least LOT2, approximately 50% received more than one LOT during the first year after diagnosis. Approximately 25% of treated patients died within 6 months of treatment initiation. Of the 2633 included patients, the median OS from diagnosis was 31.0 months (treated patients: 46.8 months, untreated patients: 3.0 months).

Supplementary Information The online version contains supplementary material available at <https://doi.org/10.1007/s40487-024-00265-8>.

S. Pacis (✉) · A. Bolzani
Cytel Inc., Potsdamer Strasse 58, 10785 Berlin,
Germany
e-mail: scarlette.pacis@cytel.com

A. Heuck · K. Gossens · M. Kruse · B. Fritz
AbbVie Deutschland GmbH and Co. KG,
Wiesbaden, Germany

U. Maywald
AOK PLUS, Dresden, Germany

T. Wilke
Institut für Pharmakoökonomie und
Arzneimittellogistik e.V. (IPAM), Wismar, Germany

C. Kunz
Westpfalz Klinikum, Westpfalz, Germany

Conclusions: Despite advances in the field, high unmet medical need in DLBCL remains. The treatment landscape is very heterogeneous, particularly in second- or later-line treatments, with few patients receiving potentially curative treatment beyond the first line. Treatment for DLBCL, particularly for transplant-ineligible patients, remains challenging.

Keywords: Diffuse large B-cell lymphoma; DLBCL; Overall survival; Treatment lines; Treatment patterns

Key Summary Points

Why carry out this study?

Diffuse large B-cell lymphoma (DLBCL) represents the most common subtype of non-Hodgkin lymphoma and accounts for approximately one third of all non-Hodgkin lymphoma cases.

Approximately 30–40% of patients with DLBCL are either refractory to initial treatment or relapse, and prognosis after treatment failure is usually poor.

The objective of this study was to investigate the prevalence, incidence, and treatment patterns (treatment regimens, switches, duration) for DLBCL in a real-world setting.

What was learned from the study?

Of the 2633 incident cases of DLBCL identified, 2119 patients received at least one DLBCL-related line of treatment (LOT1), and 25% of patients died within 6 months of treatment initiation.

The treatment landscape is very heterogeneous, particularly in second- or later-line treatments, with few patients receiving potentially curative treatment beyond the first line.

INTRODUCTION

Diffuse large B-cell lymphoma (DLBCL) represents the most common subtype of non-Hodgkin lymphoma and accounts for approximately one third of all non-Hodgkin lymphoma cases [1–3]. Worldwide incidence of DLBCL ranges from 2.3 to 13.8 cases per 100,000 person-years [4], with the incidence in Germany estimated at approximately 7 cases per 100,000 person-years [5]. Recent German prevalence data are unavailable, and the 10-year prevalence in Western Europe is roughly estimated at 45 per 100,000 patients [6]. With an average age at diagnosis of 65 to 70 years [3], the prevalence and incidence of DLBCL are expected to increase in the coming years due to the underlying aging of the population in this region [6].

Due to its aggressive nature, characterized by fast-growing tumors in lymph nodes or extranodal sites [7], the median survival rate of DLBCL is less than 1 year if untreated [2, 8]. Despite this, DLBCL is a potentially curable disease for patients who receive timely and appropriate treatment [9]. The majority of patients are treated with chemotherapy regimens [10], with R-CHOP (rituximab, cyclophosphamide, doxorubicin, vincristine, and prednisone) as the current standard of care [11]. Most patients respond well to frontline R-CHOP treatment; long-term follow-up after R-CHOP administration has shown a median overall survival of approximately 8–10 years [12, 13].

However, results on the effectiveness of R-CHOP are often obtained from selected clinical trial populations that may have limited generalizability for the targeted population [14]. Approximately 30–40% of all patients are either refractory to initial treatment or relapse [15], most within 2 years of initial symptoms [16]. Prognosis after treatment failure is usually poor, with only a minority of patients being cured and a median overall survival (OS) of 6–9 months [17]. OS continues to decrease with later treatment lines [18]. The landscape for later-line treatments is heterogeneous, with no real standard of care for patients unable to receive potentially curative stem cell transplantation (SCT) [19]. As SCT is recommended

only for selected patients who are eligible for high-dose chemotherapy [20], approximately 60% of patients are transplant ineligible [21]. Similarly, not all patients are eligible for potentially curative chimeric antigen receptor (CAR)-T cell therapy [22], presenting a therapeutic challenge for remaining patients with DLBCL. The treatment landscape for DLBCL is rapidly evolving, marked by the emergence of novel therapeutic options such as kinase inhibitors [23] and bispecific antibodies [24].

Information on the epidemiology of the disease [4, 6] and treatment regimens used in real-world settings [17, 25, 26] are limited. Therefore, this study complements the existing body of real-world evidence and investigates the prevalence, incidence, and current treatment patterns (treatment regimens, switches, and duration) for DLBCL in a real-world setting based on a patient population identified in a large German claims dataset.

METHODS

Data Source and Study Population

This retrospective claims data analysis used an anonymized dataset provided by the regional German statutory health insurance fund AOK PLUS, which covers 3.6 million people insured in Germany (regions of Saxony and Thuringia) [27]. In Germany, statutory health insurance is mandatory for individuals whose annual income is below a fixed limit, which applies to around 90% of the German population [28, 29]. Individuals with higher incomes may be privately insured.

The dataset included demographics (age, sex, date of death), Charlson Comorbidity Index score (CCI; adapted for International Classification of Diseases, 10th Revision [ICD-10] codes) [30], outpatient treatment (visits to general practitioners and specialists, diagnosis codes), inpatient treatment (hospitalizations, operational and procedure [OPS] codes, diagnosis codes), and outpatient medication prescriptions (anatomic therapeutic classification [ATC] codes for medication identification, date of prescription, daily defined dose). Clinical

trial data were not included in the dataset. Due to the non-interventional, retrospective nature of the analyzed data and because our analysis involved an anonymized dataset, neither ethical review nor informed consent of the patients was required according to German national legislation (§ 75 SGB X). As the responsible authority, the involved sickness fund (AOK PLUS) approved the use of the data for the purpose of this study.

The study period covered January 1, 2010, to December 31, 2021, with an inclusion period from January 1, 2012, to December 31, 2020. Patients with DLBCL with at least one inpatient and/or two confirmed consecutive outpatient specialist codes for DLBCL (ICD-10 German Modification [GM]: C83.3) and minimum age of 18 years at first confirmed DLBCL diagnosis (index date) were included. To limit the analysis to incident cases of DLBCL, patients who were either not continuously insured in the 2 years before the inclusion period or had any diagnosis code for DLBCL in this time were excluded. End of follow-up was defined as end of the study, loss to follow-up due to end of insurance, or death, whichever came first.

Treatment Algorithm

To identify lines of treatment (LOTs) [25, 26, 31], a treatment algorithm was developed based on recent guidelines for the treatment of DLBCL [32] and input from a clinical expert. The start of the first-line therapy (LOT1) was the first date on which the patient received a DLBCL-related treatment in the inpatient or outpatient setting. The Supplementary Data lists all treatments of interest, the corresponding ATC/OPS codes (Supplementary Table S1), and the treatment algorithm in detail (Supplementary Table S2).

Treatment patterns were observed from index date to end of follow-up. All ATC or OPS codes within 30 days were assigned to one LOT. Treatment regimens consisting of only supportive care agents (prednisone, prednisolone, dexamethasone, mesna, and/or darbepoetin) were not considered a separate LOT. The end of an outpatient LOT was defined as the

prescription of a new ATC code not included in the previous regimen or as a treatment discontinuation (a gap of at least 60 days after end of supply; end of the LOT was defined as the end of supply). Days of supply were based on the daily defined dose of the agent [27]. For treatment discontinuation, all agents of the regimen had to be discontinued, except for supportive care agents and monotherapy rituximab or lenalidomide. The end of an inpatient LOT was defined as a new OPS code (except for radiation) or treatment discontinuation of more than 6 months (the date of the last OPS code was considered the end of the LOT). Treatments received after the second-line treatment (LOT2) were combined and reported as LOT3+. Considerations for SCT and CAR-T-cell therapies are described in Supplementary Table S2.

Treatment Categories

Both inpatient and outpatient treatment regimens were categorized into eight treatment categories which fall into three broader categories: chemotherapy regimens (chemotherapy + CD20 antibodies, chemotherapy), non-chemotherapy regimens (CD20 antibodies, immunomodulators, kinase inhibitors, mechanistic target of rapamycin [mTOR]/proteasome inhibitors), and other treatments (SCT/CAR-T, radiation). Treatment categories were reported according to treatment setting: outpatient (outpatient only or inpatient/outpatient) and inpatient only.

All regimens under each treatment category are described in Supplementary Table S3. The category “chemotherapy + CD20 antibodies” included R-CHOP (rituximab, cyclophosphamide, doxorubicin, vincristine, prednisolone), BR (bendamustine, rituximab), Pola-BR (polatuzumab vedotin, bendamustine, rituximab), R-GemOx (rituximab, gemcitabine, oxaliplatin), inpatient chemotherapy with rituximab, or similar combinations. The category “chemotherapy” included regimens without CD20 antibodies, including CHOP (cyclophosphamide, doxorubicin, vincristine, prednisolone) and outpatient prescriptions of chemotherapy agents. Non-chemotherapy

regimens included regimens with and without CD20 antibodies. The radiation category referred to radiation alone, although patients may have received radiation in addition to treatments in other categories.

Statistical Analysis

Baseline characteristics were calculated for the entire cohort and compared between patients who did or did not receive any DLBCL treatment using nonparametric tests (chi-square, Mann–Whitney *U*). Treatment and treatment duration were reported using descriptive statistics. Prevalence (number of patients with DLBCL diagnosis divided by number of patients aged 18+ and continuously insured) and cumulative incidence (number of new DLBCL diagnoses divided by number of patients aged 18+ and continuously insured) were calculated for 2019/2020. Sex- and age-adjusted prevalence and cumulative incidence were derived by calculating the sex- and age-specific number of DLBCL cases per 100,000 in the AOK PLUS dataset, then standardizing these figures using demographic weights from the German Federal Office of Statistics (DESTATIS) to reflect the national population structure. OS was calculated using Kaplan–Meier methodology, including the proportion of patients alive after 6/12/36 months following the index date and median OS (95% confidence interval [CI]), censoring at end of follow-up. OS after the index date was also determined for patients who did or did not receive any DLBCL treatment. For patients who received DLBCL treatment, OS was calculated after start of LOT1 and LOT2.

Results for treatment categories with < 10 patients were not reported to preserve the anonymity of patients. Treatment duration could only be calculated for LOTs in the outpatient setting (date of first prescription/admission date to run-out date of last prescription/admission date).

Software used for data analysis included Microsoft Office Excel for Microsoft 365, RStudio version 4.2, and Stata Statistical Software version 17.

RESULTS

Baseline Characteristics and Follow-Up

A total of 2633 patients with incident cases of DLBCL meeting the inclusion/exclusion criteria were identified between January 1, 2012, and December 31, 2020. The number of incident cases per year was consistent throughout the inclusion period (293 ± 13 patients per calendar year, Supplementary Table S4). The median age was 75 years, median Charlson Comorbidity Index (CCI) score was 8, and 51% of patients were male (Table 1). The median follow-up duration was 21 months, with 59.5% of patients dying during follow-up.

At least one DLBCL-related treatment was received by 2119 (80.5%) of patients. Compared to patients without treatment, patients who received treatments were younger (median age 74 years vs. 80 years, $p < 0.001$), had longer follow-up duration (median duration 26.6 months vs. 2.9 months, $p < 0.001$), and had a lower percentage of deaths during follow-up (54.9% vs 78.6%, $p < 0.001$). At index, untreated patients more commonly had chronic kidney disease ($p < 0.001$) and atrial fibrillation/flutter ($p < 0.001$).

Prevalence and Cumulative Incidence

The prevalence of DLBCL was 34.8 per 100,000 patients in 2019 and 36.7 per 100,000 patients in 2020. The cumulative incidence was 14.0 and 12.7 per 100,000 patients in 2019 and 2020, respectively. Age- and sex-adjusted prevalence and cumulative incidence in 2019/2020 were lower than crude estimates (prevalence: 30.9/33.3 per 100,000 patients, cumulative incidence: 12.3/11.3 per 100,000 patients).

Treatment Patterns

First Treatment Line

A total of 2119 patients were administered at least one line of treatment (Table 2). Most patients were given a chemotherapy-based regimen ($n = 1922$; 90.7%), with 1530 (79.6%) and 392 (20.4%) patients receiving chemotherapy

with/without CD20 antibodies, respectively. Detailed prescription data could only be observed for patients receiving treatment in the outpatient setting ($n = 1099$). Of the patients with treatment in the outpatient setting, 509 (46.3%) and 90 (8.2%) patients were given R-CHOP (or similar) and BR, respectively. All other CD20 antibody-containing chemotherapy regimens were received by < 10 patients (Supplementary Table S5). Among non-chemotherapy regimens, 116 patients were given CD20 antibodies and 51 patients received only radiotherapy.

Second Treatment Line

Of the 2119 patients with LOT1, a second-line treatment was initiated in 403 (19.0%) patients (Table 2). Most patients received a chemotherapy-based regimen ($n = 225$, 55.8%), of which the vast majority ($n = 183$ patients) received a CD20 antibody-containing chemotherapy regimen. Among patients receiving treatment in the outpatient setting ($n = 196$), BR was given to 42 (21.4%), R-CHOP to 23 (11.7%), Pola-BR to 12 (6.1%), and R-GemOx to 10 (5.1%) patients.

Out of 69 (17.1%) patients given non-chemotherapy regimens, 42 patients received only CD20 antibodies and 18 received a kinase inhibitor. SCT or CAR-T was performed for 100 (24.8%) patients (82% autologous SCT; 18% allogeneic SCT, unspecified SCT, or CAR-T).

Further Treatment Lines

Among the 403 patients with LOT2, 106 (26.3%) patients were given at least a third-line treatment. There were 30 LOT4-LOT7 treatment lines for a total of 136 LOT3+ treatments (Table 2).

A chemotherapy regimen was used for 74 (54.4%) treatments (54 [39.7%] with and only 20 [14.7%] without CD20 antibodies). Regarding treatments in the outpatient setting ($n = 87$), 16 (18.3%) of the prescribed chemotherapy regimens were BR or R-GemOx. Due to the small sample size, individual chemotherapy regimens without CD20 could not be evaluated. Of the 45 (33.1%) non-chemotherapy treatment lines, 18 were a kinase inhibitor.

Table 1 Baseline characteristics and follow-up duration

	All patients (<i>n</i> = 2633)	Patients with DLBCL treatment (<i>n</i> = 2119)	Patients with no DLBCL treatment (<i>n</i> = 514)	<i>p</i> value
<i>Baseline characteristics</i>				
Age, median (mean SD) at index date	75 (72.1 13.1)	74 (71.1 12.9)	80 (76.5 13.2)	< 0.001
< 65 years, <i>n</i> (%)	639 (24.3)	556 (26.2)	83 (16.1)	< 0.001
65 to 74, <i>n</i> (%)	627 (23.8)	546 (25.8)	81 (15.8)	–
75 to 84, <i>n</i> (%)	1015 (38.5)	809 (38.2)	206 (40.1)	–
85+	352 (13.4)	208 (9.8)	144 (28.0)	–
Sex, male, <i>n</i> (%)	1343 (51.0)	1082 (51.1)	261 (50.8)	0.908
CCI, median (mean SD) at index date <i>n</i> (%)	8 (8.3 4.1)	8 (8.6 4.1)	7 (7.1 3.7)	< 0.001
Top comorbidities at index date (ICD-10-GM), <i>n</i> (%)				
Primary hypertension (I10)	1332 (50.6)	1068 (50.4)	264 (51.36)	0.696
Diabetes mellitus type 2 (E11)	624 (23.7)	486 (22.9)	138 (26.8)	0.061
Fluid/electrolyte/acid–base imbalance (E87)	604 (22.9)	473 (22.3)	131 (25.4)	0.126
Chronic kidney disease (N18)	393 (14.9)	281 (13.3)	112 (21.7)	< 0.001
Atrial fibrillation/flutter (I48)	374 (14.2)	274 (12.9)	100 (19.5)	< 0.001
<i>Follow-up</i>				
Duration of follow-up in months, median (mean SD)	21.0 (33.9 33.8)	26.6 (37.2 33.5)	2.9 (20.3 31.5)	< 0.001
< 6 months, <i>n</i> (%)	726 (27.6)	422 (19.9)	304 (59.1)	< 0.001
6 to < 12 months, <i>n</i> (%)	277 (10.5)	237 (11.2)	40 (7.8)	–
12 to < 24 months, <i>n</i> (%)	396 (15.0)	361 (17.0)	35 (6.8)	–
24 to < 48 months, <i>n</i> (%)	445 (16.9)	400 (18.9)	45 (8.8)	–
48+ months, <i>n</i> (%)	789 (30.0)	699 (33.0)	90 (17.5)	–
Reason for loss to follow-up, <i>n</i> (%)				
Death	1567 (59.5)	1163 (54.9)	404 (78.6)	< 0.001
End of study	1051 (40.0)	943 (44.5)	108 (21.0)	–
End of insurance	15 (0.5)	13 (0.6)	2 (0.3)	–

CCI Charlson Comorbidity Index, DLBCL diffuse large B-cell lymphoma, ICD-10-GM International Classification of Diseases 10th Revision German Modification, SD standard deviation

Table 2 Treatment categories and treatment duration (LOT1-LOT3+) in patients with DLBCL

Treatment categories, <i>n</i> (%)	LOT1		LOT2		LOT3+				
	All <i>n</i> = 2119	Outpatient ^a <i>n</i> = 1099	Inpatient only <i>n</i> = 1020	All <i>n</i> = 403	Outpatient ^a <i>n</i> = 196	Inpatient only <i>n</i> = 207	All <i>n</i> = 136	Outpatient ^a <i>n</i> = 87	Inpatient only <i>n</i> = 49
Chemotherapy regimens	1922 (90.7)	1012 (92.1)	910 (89.2)	225 (55.8)	124 (63.3)	101 (48.8)	74 (54.4)	48 (55.2)	(~55.0) ^c
Chemotherapy + CD20 antibodies ^b	1530 (72.2)	966 (87.9)	564 (55.3)	183 (45.4)	99 (50.5)	84 (40.6)	54 (39.7)	35 (40.2)	(~40.0) ^c
Chemotherapy ^c	392 (18.5)	46 (4.2)	346 (33.9)	42 (10.4)	25 (12.8)	(~8.0) ^c	20 (14.7)	13 (14.9)	< 10
Non-chemotherapy regimens	137 (6.5)	86 (7.8)	51 (5.0)	69 (17.1)	59 (30.1)	10 (4.8)	45 (33.1)	36 (41.4)	< 10
CD20 antibodies	116 (5.5)	76 (6.9)	40 (3.9)	42 (10.4)	(~18.0) ⁵	< 10	14 (10.3)	< 10	< 10
Immunomodulators ^d	12 (0.6)	< 10	(~1.0) ^e	< 10	< 10	< 10	12 (8.8)	< 10	< 10
Kinase inhibitors ^d	< 10	< 10	-	18 (4.5)	18 (9.2)	-	18 (13.2)	18 (20.7)	-
mTOR/proteasome inhibitor ^d	< 10	< 10	< 10	< 10	< 10	< 10	< 10	< 10	< 10
SCT or CAR-T	< 10	-	< 10	100 (24.8)	13 (6.6)	87 (42.0)	< 10	< 10	< 10
Radiation	51 (2.4)	-	51 (5.0)	< 10	< 10	< 10	< 10	-	< 10
Treatment duration, median (IQR)	-	183.0 (142.3–235.0)	-	-	132.0 (60.0–273.3)	-	-	115.0 (57.5–227.0)	-

CAR-T chimeric antigen receptor T cells, IQR interquartile range, LOT line of treatment, mTOR mechanistic target of rapamycin, SCT stem cell transplantation

^aTreatment lines in outpatient settings (outpatient only, inpatient/outpatient) were combined, as detailed prescription data could only be observed for patients receiving treatment in the outpatient setting. Treatment categories separated by outpatient only and inpatient/outpatient data are shown in Supplementary Table S5

^bIncludes regimens of CD20 antibodies + inpatient chemotherapy, CD20 antibodies + chemotherapy agents, R-CHOP, BR, Pola-BR, R-GemOx, or similar treatment

^cIncludes regimens of inpatient chemotherapy, chemotherapy agents, demethylation agents, alkylating agents, CHOP, or similar treatment

^dIncludes regimens with and without CD20 antibodies

^eValues approximated to preserve patient anonymity

Treatment Switches

Treatment progression is depicted in Fig. 1. Patients that received a second-line treatment and were given chemotherapy containing CD20 antibodies in LOT1 ($n = 277$) commonly switched to SCT ($n = 76$; 27.4%), CD20 antibodies alone ($n = 25$; 9.0%), or chemotherapy without CD20 antibodies ($n = 24$; 8.7%). Patients who underwent LOT2 and were given chemotherapy without CD20 antibodies in LOT1 ($n = 82$) frequently switched to chemotherapy containing CD20 antibodies ($n = 35$; 42.7%) and SCT ($n = 19$; 23.2%). Of the patients administered CD20 antibodies alone in LOT1 and received a second line ($n = 28$), 15 (53.6%) patients were given chemotherapy containing CD20 antibodies in LOT2. Treatment switches from LOT2 to LOT3 could not be reported due to small sample size.

Treatment Duration and Number of Treatment Lines Within 1–5 Years of Follow-Up

The median treatment duration for outpatient treatments was longer for LOT1 ($n = 1099$; 183 days) than for LOT2 ($n = 196$; 132 days) and LOT3+ ($n = 87$; 115 days) (Table 2). Treatment durations by treatment category and including monotherapy rituximab/lenalidomide following treatment line are described in Supplementary Table S6.

The median (IQR) time between treatment lines was less than 6 months (LOT1 to LOT2: 131 [1–466] days; LOT2 to LOT3: 127.5 [39–341] days). Out of all treated patients ($n = 2119$), the vast majority of patients (98.7%) received a treatment within 1 year of diagnosis (Fig. 2). Among patients with at least LOT2 or LOT3, approximately 50% of patients received more than one line of treatment during the first year after diagnosis (\geq LOT2: 46.9%; \geq LOT3: 51.9%). For patients with at least three treatment lines ($n = 106$), 18.9% were already given a third line during the first year after diagnosis, and within 5 years of follow-up, the vast majority of patients (83.0%) received their third treatment line.

Survival of Patients with DLBCL

Of the 2633 patients with DLBCL included in the study, the percentage of patients alive at 6/12/36 months after diagnosis was 72.4%/61.9%/37.3%, respectively, and the median OS from index date was 31.0 months (95% CI 26.5–37.5). The median OS from the index date was considerably shorter among patients who did not receive treatment (3.0 months [95% CI 2.1–4.1], $n = 514$) than among treated patients (46.8 months [95% CI 40.6–54.7], $n = 2119$) (Fig. 3).

Based on Kaplan–Meier estimates of treated patients ($n = 2119$), 21% and 28% of treated patients died within 6 months of treatment initiation of LOT1 and LOT2, respectively. The percentage of patients alive at 6/12/36 months after start of LOT1 was 78.9%/67.8%/40.7%. The median OS from start of LOT1 ($n = 2119$) was 45.9 months (95% CI 40.0–54.1) (Supplementary Figure S1). Among patients who received a second-line treatment ($n = 403$), 72.0%/57.1%/24.6% were alive at 6/12/36 months, respectively, after start of LOT2, and median OS from start of LOT2 was 20.9 months (95% CI 17.9–26.3) (Supplementary Figure S2).

DISCUSSION

German claims data were analyzed to estimate the prevalence and cumulative incidence of DLBCL and characterize real-world treatment patterns, including identification of treatment lines, different regimens, and treatment duration. The included patient population ($n = 2633$) was older (median age 75 years), highly comorbid (median CCI 8), and included a large proportion of untreated patients (19.5%). This is comparable to other real-world studies of DLBCL incidence in patient populations [26, 31], although this population differs greatly from patients included in clinical trials, which tend to exclude patients with a poor prognosis [14].

The prevalence and cumulative incidence of DLBCL were calculated for the most recently available year within the inclusion period (2020) and the previous year (2019). Prevalence

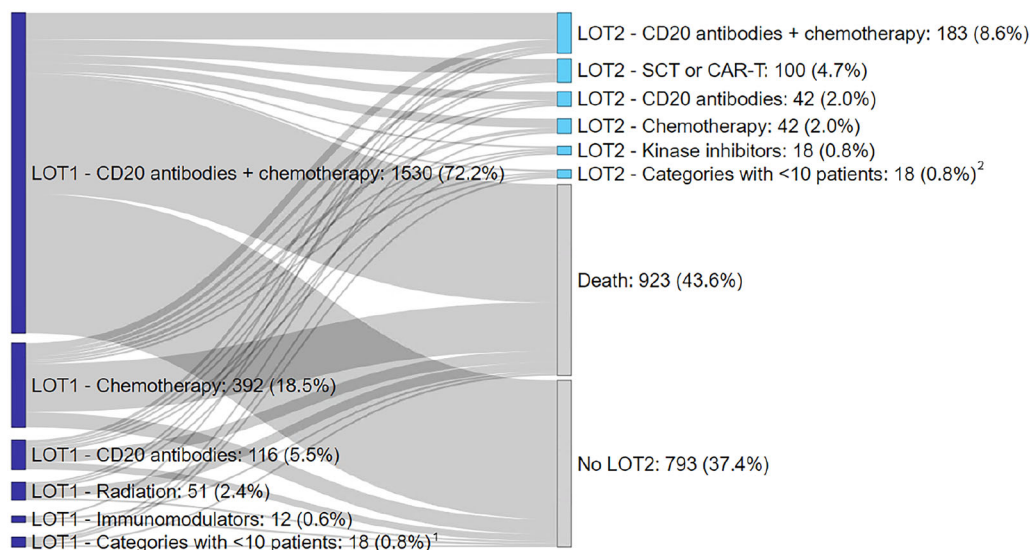


Fig. 1 Sankey diagram of patient progression from LOT1 to LOT2 in DLBCL. ¹Categories with < 10 patients in LOT1 were immunomodulators, kinase inhibitors, mTOR/proteasome inhibitors, SCT/CAR-T. ²Categories

with < 10 patients in LOT2 were immunomodulators, mTOR/proteasome inhibitors, and radiation. Abbreviations: *CAR-T* chimeric antigen receptor T cells, *LOT* line of treatment, *SCT* stem cell transplantation

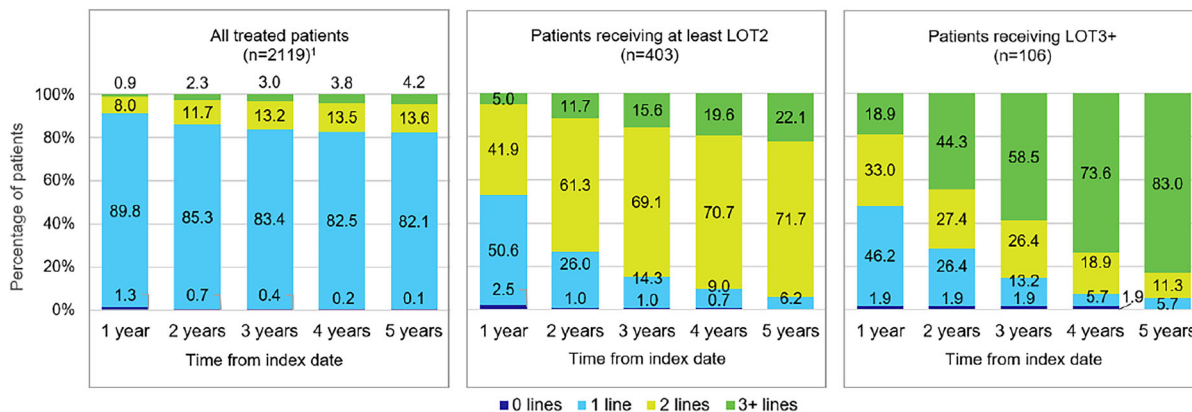


Fig. 2 Number of treatment lines received by patients during follow-up. Figure shows the percentage of patients receiving 0, 1, 2, or 3+ treatment lines within 1–5 years after index date (first DLBCL diagnosis) among all treated patients, patients receiving at least LOT2, and patients

receiving LOT3+ . ¹Among all treated patients ($n = 2119$), 1716 (81.0%) received only 1 line, 403 (19.0%) received at least 2 lines, and 106 (5.0%) received 3+ lines. Abbreviations: *LOT* line of treatment

in 2019/2020 was 34.8/36.7 per 100,000 patients (age- and sex-adjusted: 30.9/33.3 per 100,000), and the annual cumulative incidence of DLBCL was 14.0/12.7 per 100,000 patients in 2019/2020 (age- and sex-adjusted: 12.3/11.3 per 100,000).

Limited data on DLBCL prevalence are currently available, with only rough 10-year prevalence estimates provided by Kanas et al. (≈ 45 per 100,000 patients) [6]. Our findings for annual prevalence were in line with these data and contribute to the sparse knowledge in this field.

Cumulative incidence of DLBCL in our study was higher than the incidence rate estimates in Germany (7 cases per 100,000 person-years) [5], but in line with worldwide reports of incidence rates (2.3 to 13.8 cases per 100,000 person-years) [4]. This larger estimate was observed despite our conservative approach of including only patients with inpatient diagnoses or two confirmed consecutive outpatient specialist codes. The higher cumulative incidence found in our dataset could reflect an aging population, as the incidence of DLBCL is estimated to increase in the upcoming years [6]. The decline observed in cumulative incidence in 2020 may be a result of fewer diagnoses due to the COVID-19 pandemic [33]. However, a previous study using the AOK PLUS dataset found that the number of cancer diagnoses in 2020 did not differ significantly from 2019 [34].

The study revealed a large proportion of patient mortality ($\approx 60\%$), highlighting the high medical need among patients with DLBCL. This is in part due to the approximately 20% of

the included population who did not receive any DLBCL treatment during follow-up. This finding is in line with Borchmann et al., a study that used a different German claims dataset to examine survival outcomes of patients with DLBCL and which also found that 20% of included patients did not receive a DLBCL treatment regimen [25]. A study using US insurance data also described that approximately 25% of patients with DLBCL receive no treatment [35].

In this study, untreated patients had poor prognosis, with median OS of 3 months, which may be due to the significantly older population among untreated patients. Untreated patients may have had more advanced-stage disease [36] or poor performance status [37], which could not be ascertained in the data. Approximately 25% of untreated patients were still alive over 4 years after initial diagnosis, although the median survival rate of untreated DLBCL is reported as less than 1 year [2, 8]. Some patients categorized as untreated may have been treated

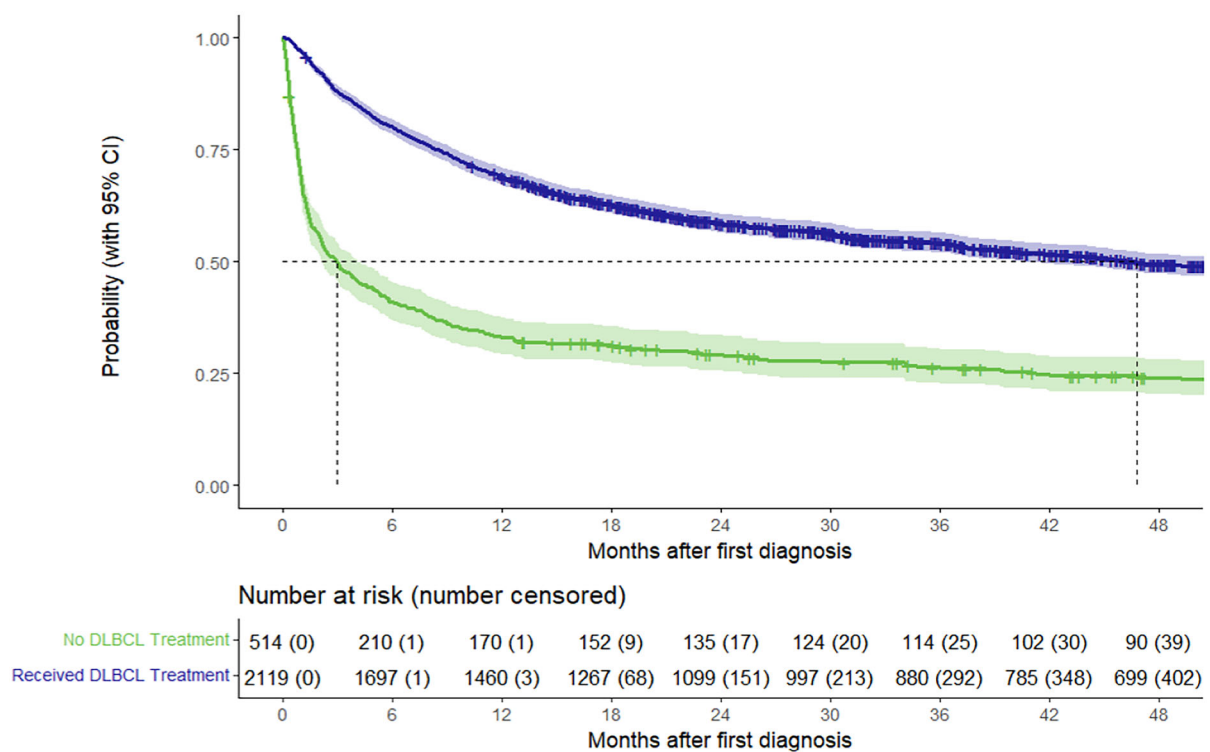


Fig. 3 Kaplan–Meier OS analysis after index date of treated patients ($n = 2119$) and untreated patients ($n = 514$). Abbreviations: *CI* confidence interval, *DLBCL* diffuse large B-cell lymphoma

through clinical trials, which could not be captured in our data. However, clinical trial recruitment in Germany is low compared to other European countries—only 500 patients per million inhabitants (0.5%) take part in clinical trials [38]. Due to our methodology for including patients, we also cannot rule out the possibility of false DLBCL diagnoses. Our Kaplan–Meier survival curves shown in Fig. 2 are comparable to Daneels et al., a study using Belgian health insurance data to describe first- and second-line treatments for DLBCL, which also showed poor survival outcomes for patients who did not receive chemo/radiotherapy in the first line [26].

Patient mortality was also common among treated patients, with approximately 25% of patients dying within 6 months of initiation of therapy (21.0% and 28.0% after start of LOT1 and LOT2). Patient mortality within 12 months after start of LOT1 or LOT2 was 32.2% and 42.9%, respectively. This underscores the aggressive course of the disease, despite the array of currently available treatment regimens for DLBCL. Median survival after the start of therapy among patients who received a second line or further (20.9 months, $n = 403$) was shorter compared to all treated patients (45.9 months, $n = 2119$). This is consistent with literature stating that prognosis after treatment failure is usually poor [17].

Among the 2119 patients who did receive DLBCL treatment, the vast majority (90.7%) were administered a chemotherapy regimen as a first-line therapy, mostly containing CD20 antibodies. The general guidelines for front-line DLBCL treatment recommend treatment with R-CHOP [39], and this regimen was also the most frequently identified chemotherapy combination (46.3% of outpatient treatments). Approximately 20% ($n = 392$) of chemotherapy patients did not receive CD20 antibodies. However, most of these patients ($n = 346$; 88.2%) received first-line treatment in the inpatient setting only, where chemotherapy treatments are identified only by OPS code. OPS codes for chemotherapy do not contain information about respective agents. We cannot rule out the possibility that in some cases, combination treatments such as R-CHOP were coded

as chemotherapy in the inpatient setting, without the separate OPS code for rituximab (OPS 6-001.h, 6-001.j). Additionally, our results are consistent with Borchmann et al., which also found that approximately 20% of patients received regimens without rituximab in the first line [25]. Approximately 5% of all treated patients were given CD20 antibodies as monotherapy in the first-line treatment. As incident DLBCL is more commonly treated in combination with chemotherapy, patients who received monotherapy may have been older and presented with more comorbidities and therefore were unable to tolerate a full chemotherapy regimen [40]. Few patients (2.4%) received radiation therapy alone, likely as a treatment for localized disease [41].

We identified 403 patients (19%) that were administered a second-line treatment. This result was slightly higher than that of Daneels et al., which found that 16% of patients had refractory/relapsed disease, defined as second-line regimens within 2 years of diagnosis [26]. However, our study was able to capture second lines of treatment beyond 2 years of diagnosis, which may explain the higher percentages of identified patients. Reviews of DLBCL indicate that refractory/relapsed disease can occur in 30–40% of patients after initial treatment [15]. However, only 19% of patients in our study received LOT2 treatment, suggesting that a large proportion of refractory/relapsed patients get no second-line treatment due to death or ineligibility. Therefore, the actual proportion of refractory/relapsed patients in our sample may be higher than our findings.

Treatments received by patients in the second line were varied. In our study, SCT or CAR-T was performed as a second line for approximately one quarter of patients ($n = 100$; 24.8%), of which 82 patients were given autologous SCT. This is consistent with Harrysson et al., a Swedish medical chart review study, which found that approximately 22% of patients with a second line underwent SCT [17]. The overall low number of SCT treatments in our study also aligns with the study by Borchmann et al., which reported a very similar proportion of patients who underwent SCT. This implies that although SCT is a standard of care among

transplant-eligible refractory/relapsed patients [20], many patients are unfit for SCT due to older age or a high number of comorbidities [19].

Additionally, despite CAR-T cell therapy being touted as an alternative to SCT for older and less fit patients [22], we observed very few patients receiving this treatment. CAR-T therapies axicabtagene ciloleucel (axi-cel) and tisagenlecleucel (tisa-cel) were first approved in Europe in 2018, which may explain the sparsity of this treatment in our dataset [42]. Lisocabtagene maraleucel (liso-cel) was not approved until 2022 [43], which is beyond the time frame of our analysis. Additionally, access to CAR-T after initial approval may have been constrained due to restrictive patient selection and limited numbers of CAR-T centers [42]. Our findings are in line with the number of CAR-T treatments performed in Germany [44] and the low numbers observed in Harrysson et al. [17].

The majority of patients (55.8%) were given chemotherapy regimens in the second line, with most patients in this category receiving chemotherapy containing CD20 antibodies. Daneels et al. also found that the majority of second-line regimens contained rituximab and chemotherapy, predominantly platinum-based [26]. Transplant-ineligible patients have historically been given chemoimmunotherapy regimens such as R-GemOx and BR with palliative intent, although these therapies often do not result in long-lasting remission [45]. Among LOT2 outpatient treatments ($n = 196$), only approximately one quarter (26.5%) of the regimens consisted of R-GemOx or BR, highlighting the heterogeneous treatment landscape and lack of a standardized approach among patients unfit for transplantation. With the addition of more market-authorized regimens such as Pola-BR (2020) and Tafa-Len (tafasitamab and Lenalidomide 2021) [46, 47], the variety of treatment options for DLBCL continues to grow.

Third-line or further treatments were also highly heterogeneous. The most frequent type of LOT3+ treatment was chemotherapy (54.4%), with a very low proportion of patients treated with chemotherapy without CD20 antibodies. This is in line with current

guidelines, which recommend combination therapies, usually including a CD20 antibody [48]. Non-chemotherapy regimens comprising one third of the LOT3+ treatments and kinase inhibitors such as ibrutinib were administered in 13% of treatments. There is recent evidence that ibrutinib monotherapy may be used to effectively treat refractory/relapsed DLBCL with low toxicity [23]. The relatively frequent usage of non-chemotherapy regimens and newer treatment options in a real-world setting reflects the rapidly evolving treatment landscape of DLBCL and underlines the need to address treatment challenges among transplant-ineligible refractory/relapsed patients.

We observed that a large proportion of patients received treatment in inpatient settings only, although DLBCL is described as more commonly administered in the outpatient setting [49]. A study using US inpatient data found that chemotherapy was administered in approximately 30% of hospitalizations for DLBCL and more commonly for younger patients with fewer chronic conditions [49]. To our knowledge, no existing studies address the proportion of inpatient treatment for DLBCL within the context of Germany or Europe. Additional research is necessary to investigate reasons for the high proportion of inpatient treatment among these patients. We found that the proportion of patients receiving inpatient-only treatment decreased for LOT3+ treatments (36.0%) compared to LOT1 (48.1%) and LOT2 (51.4%). This may be because our study could not capture treatment in clinical trials, which occur more frequently in the hospital setting. However, as claims data do not contain information on the medical records of patients, it is difficult to interpret this finding.

Consistent with the literature, our study found that patients that were refractory or relapsed did so within a short period of time after DLBCL diagnosis [16, 17]. Although the dataset contained no information about symptom onset, we found that among patients with at least a second line, approximately 50% of patients received LOT2 treatment within 1 year after diagnosis. For patients with at least three treatment lines, 18.9% were already given a third line during the first year of follow-up. This

number increased to 48.5% by 3 years of follow-up and 83.0% by 5 years of follow-up. This rapid progression between lines of therapy highlights the unmet need among refractory/relapsed patients. It is possible that the relatively short median time between treatment lines is due to our treatment line algorithm, which was used due to the lack of clinical information in claims data. However, our algorithm is consistent with methods used for other real-world studies [25, 26]. Short times between treatment lines may be indicative of refractory rather than relapsed disease. For example, Daneels et al. define refractory disease as the initiation of a second-line regimen within 12 weeks from the end of first-line therapy, whereas relapsed disease is defined as a second-line regimen beginning beyond 12 weeks of the end of the first-line therapy [26].

The main strength of this claims data analysis is the ability to capture incident cases irrespective of patient characteristics, such as age and comorbidities, and willingness to participate in clinical or observational studies, therefore contributing to high external validity. Additionally, we included patients who did not receive any DLBCL treatment, to avoid selection bias in excluding untreated patients. Our study also allowed for a long observation period, with up to 10 years of follow-up for patients with a first DLBCL diagnosis in 2012. The dataset covered both inpatient and outpatient treatment, and subsequently provides full coverage over all sectors of healthcare in Germany and information about the treatment setting of patients with DLBCL. Lastly, information from real-world clinical practice is limited (to our knowledge, there is no registry for patients with DLBCL in Germany), and therefore claims data analysis provides insight into this patient population. Our study contributes to the current body of real-world evidence on the epidemiology and treatment approaches for DLBCL.

We also acknowledge some intrinsic limitations, particularly related to the use of a retrospective anonymous claims dataset. The dataset did not include clinical details, such as stage of DLBCL at diagnosis or disease progression, as data are primarily used for reimbursement purposes. Treatment lines were identified indirectly

via the specified algorithm, as we could not confirm the refractory/relapsed status of patients. Formally, we cannot rule out the possibility of false diagnosis, although we implemented a conservative approach to only include patients with inpatient diagnoses or two confirmed consecutive outpatient specialist codes. Our analysis also does not differentiate between subtypes of DLBCL, such as primary central nervous system lymphoma or post-transplant lymphoproliferative disease, which may be captured under the same ICD-10-GM code as DLBCL. Regional bias may be present, as AOK PLUS only insures patients from two German states (Saxony/Thuringia). However, in accordance with the German legal framework, health service reimbursement rules are identical across Germany, and previous studies have found no major regional differences in health care structures between Saxony/Thuringia and other German states [27].

A large number of treatment regimens were observed, and to protect patient anonymity, treatment categories were necessary to summarize the data. However, this subsequently led to loss of information. Additionally, detailed prescription data were only observed for treatments in the outpatient setting (outpatient only or inpatient/outpatient treatments). In the inpatient sector, chemotherapy treatments could be identified by OPS code, but the data did not contain information about the respective agents. Therefore, we could not ascertain the specific type of chemotherapy regimens received during inpatient treatment.

Our study also does not reflect all potential medical interventions applied to patients, such as participation in clinical trials which do not qualify for medical claims. Finally, due to the long study period, innovative therapies from recent years may be underrepresented compared to treatments that have been established for a longer time.

CONCLUSION

Despite advances in the field, high unmet medical need in DLBCL remains. A large proportion of patients do not receive systemic

treatment for DLBCL and subsequently have exceptionally poor survival outcomes. Patient mortality over the course of the analysis was high, even among treated patients. Approximately 25% of patients died within 6 months of start of therapy, independent of treatment line, highlighting the aggressive disease course despite currently available treatment options. Additionally, rapid progression between lines of therapies was observed among refractory/relapsed patients, with approximately 50% of patients receiving at least a second line within 1 year after diagnosis.

The treatment landscape is very heterogeneous, particularly in second- or later-line treatments, with few patients receiving potentially curative treatment beyond the first line. SCT or CAR-T was performed for only one quarter of refractory/relapsed patients, and the number of observations of CAR-T was especially limited. In later-line treatments, a larger proportion of non-chemotherapy regimens and newer treatment options was observed. Treatment for DLBCL, particularly for transplant-ineligible patients, remains a challenge for medical practitioners. However, the treatment landscape in DLBCL is evolving quickly, and our study provides timely insights into the current state of DLBCL management and patient outcomes. It can help to identify areas that need further exploration in DLBCL treatment strategies. As the field continues to advance, it will be interesting to observe how novel therapies such as CAR-T cells or bispecific antibodies will impact clinical practice in DLBCL in the coming years.

Author Contribution. All named authors meet the International Committee of Medical Journal Editors (ICMJE) criteria for authorship and have given their approval for this version to be published. Scarlette Pacis, Anna Bolzani, Alexander Heuck, Klaus Gossens, Mathias Kruse, Ulf Maywald, Thomas Wilke, and Christian Kunz were involved in the conceptualization and the design of the study and interpretation of the data. Scarlette Pacis and Anna Bolzani analyzed the data and drafted the manuscript. All authors critically reviewed the

article and made substantial contributions to the finalization of the manuscript, especially including the discussion section, and have given their final approval of the version to be submitted.

Funding. Data collection, statistical analysis and medical writing support were provided by Cytel, Inc. (Berlin, Germany), which was funded by AbbVie Deutschland GmbH & Co. KG (Wiesbaden, Germany). The journal's Rapid Service fee was also funded by AbbVie Deutschland GmbH & Co. KG.

Data Availability. The data used in this study are abstracted from anonymized, individual patient records and are not publicly available due to contractual agreements with the sickness fund (AOK PLUS).

Declarations

Conflict of Interest. Scarlette Pacis and Anna Bolzani are employees of Cytel. Alexander Heuck, Klaus Gossens, Mathias Kruse and Björn Fritz are AbbVie employees and may own AbbVie stock. Ulf Maywald has no potential conflict of interest, except those potentially related to his employer, AOK PLUS. Thomas Wilke is an employee of IPAM and he has received honoraria from several pharmaceutical/consultancy companies including Abbvie. Christian Kunz works at the Westpfalz-Klinikum GmbH, MVZ Kaiserslautern and declared no potential conflict of interest.

Ethical Approval. Due to the non-interventional, retrospective nature of the analyzed data and because our analysis involved an anonymized dataset, neither ethical review nor informed consent of the patients was required according to German national legislation (§ 75 SGB X). As the responsible authority, the involved sickness fund (AOK PLUS) approved the use of the data for the purpose of this study.

Open Access. This article is licensed under a Creative Commons Attribution-NonCommercial 4.0 International License, which permits any non-commercial use, sharing, adaptation,

distribution and reproduction in any medium or format, as long as you give appropriate credit to the original author(s) and the source, provide a link to the Creative Commons licence, and indicate if changes were made. The images or other third party material in this article are included in the article's Creative Commons licence, unless indicated otherwise in a credit line to the material. If material is not included in the article's Creative Commons licence and your intended use is not permitted by statutory regulation or exceeds the permitted use, you will need to obtain permission directly from the copyright holder. To view a copy of this licence, visit <http://creativecommons.org/licenses/by-nc/4.0/>.

REFERENCES

- Danese MD, Griffiths RI, Gleeson ML, Dalvi T, Li J, Mikhael JR, et al. Second-line therapy in diffuse large B-cell lymphoma (DLBCL): treatment patterns and outcomes in older patients receiving outpatient chemotherapy. *Leuk Lymphoma*. 2017;58(5):1094–104.
- Flowers CR, Sinha R, Vose JM. Improving outcomes for patients with diffuse large B-cell lymphoma. *CA Cancer J Clin*. 2010;60(6):393–408.
- Mayerhoff L, Lehne M, Hickstein L, Salimullah T, Prieur S, Thomas SK, et al. Cost associated with hematopoietic stem cell transplantation: a retrospective claims data analysis in Germany. *J Comp Eff Res*. 2019;8(2):121–31.
- Garg M, Takyar J, Dhawan A, Saggu G, Agrawal N, Hall A, et al. Diffuse large B-cell lymphoma (DLBCL): a structured literature review of the epidemiology, treatment guidelines, and real-world treatment patterns. *Abstract Blood*. 2022;140(Supplement 1):12106–7.
- Skalt D, Moertl B, von Bergwelt-Baildon M, Schmidt C, Schoel W, Bücklein V, et al. Budget impact analysis of CAR T-cell therapy for adult patients with relapsed or refractory diffuse large b-cell lymphoma in Germany. *Hemasphere*. 2022;6(7): e736.
- Kanas G, Ge W, Quek RG, Keeven K, Nersesyan K, Aranson JE. Epidemiology of diffuse large B-cell lymphoma (DLBCL) and follicular lymphoma (FL) in the United States and Western Europe: population-level projections for 2020–2025. *Leuk Lymphoma*. 2022;63(1):54–63.
- Kubuschok B, Held G, Pfreundschuh M. Management of diffuse large B-cell lymphoma (DLBCL). *Cancer Treat Res*. 2015;165:271–88.
- Adiyaman SC, Alacacioğlu İ, Danyeli AE, Türkyılmaz D, Sevindik ÖG, Demirkan F, et al. Prognostic factors in elderly patients with diffuse large B-cell lymphoma and their treatment results. *Turk J Haematol*. 2019;36(2):81–7.
- Poletto S, Novo M, Paruzzo L, Frascione PMM, Vitolo U. Treatment strategies for patients with diffuse large B-cell lymphoma. *Cancer Treat Rev*. 2022;110: 102443.
- Major A, Smith SM. DA-R-EPOCH vs R-CHOP in DLBCL: how do we choose? *Clin Adv Hematol Oncol*. 2021;19(11):698–709.
- Wang L, Li L-r, Young KH. New agents and regimens for diffuse large B cell lymphoma. *J Hematol Oncol*. 2020;13(1):175.
- Coiffier B, Thieblemont C, Van Den Neste E, Lepage G, Plantier I, Castaigne S, et al. Long-term outcome of patients in the LNH-98.5 trial, the first randomized study comparing rituximab-CHOP to standard CHOP chemotherapy in DLBCL patients: a study by the Groupe d'Etudes des Lymphomes de l'Adulte. *Blood*. 2010;116(12):2040–205.
- Horvat M, Zadnik V, Južnič Šetina T, Boltežar L, Pahole Goličnik J, Novaković S, et al. Diffuse large B-cell lymphoma: 10 years' real-world clinical experience with rituximab plus cyclophosphamide, doxorubicin, vincristine and prednisolone. *Oncol Lett*. 2018;15(3):3602–9.
- Harkins RA, Patel SP, Lee MJ, Switchenko JM, Ansell SM, Bartlett NL, et al. Improving eligibility criteria for first-line trials for patients with DLBCL using a US-based Delphi-method survey. *Blood Adv*. 2022;6(9):2745–56.
- Sawalha Y. Relapsed/refractory diffuse large B-cell lymphoma: a look at the approved and emerging therapies. *J Pers Med*. 2021;11(12):1345.
- Gisselbrecht C, Van Den Neste E. How I manage patients with relapsed/refractory diffuse large B cell lymphoma. *Br J Haematol*. 2018;182(5):633–43.
- Harrysson S, Eloranta S, Ekberg S, Enblad G, El-Galaly TC, Sander B, et al. Outcomes of relapsed/refractory diffuse large B-cell lymphoma and influence of chimaeric antigen receptor T trial eligibility criteria in second line—a population-based study of 736 patients. *Br J Haematol*. 2022;198(2):267–77.
- Klink AJ, Nabhan C, Lee CH, Laney J, Yang Y, Purdum AG, et al. Real-world management and outcomes of patients with relapsed/refractory diffuse

- large B-cell lymphoma treated in the United States. *J Clin Pathways*. 2020;6(1):44–53.
19. Raut LS, Chakrabarti PP. Management of relapsed-refractory diffuse large B cell lymphoma. *South Asian J Cancer*. 2014;3(1):66–70.
 20. Lekakis LJ, Moskowitz CH. The role of autologous stem cell transplantation in the treatment of diffuse large B-cell lymphoma in the era of CAR-T cell therapy. *Hemisphere*. 2019;3(6): e295.
 21. Sarkozy C, Sehn LH. Management of relapsed/refractory DLBCL. *Best Pract Res Clin Haematol*. 2018;31(3):209–16.
 22. Vic S, Lemoine J, Armand P, Lemonnier F, Houot R. Transplant-ineligible but chimeric antigen receptor T-cells eligible: a real and relevant population. *Eur J Cancer*. 2022;175:246–53.
 23. Graf SA, Cassaday RD, Morris K, Voutsinas JM, Wu QV, Behnia S, et al. Ibrutinib monotherapy in relapsed or refractory, transformed diffuse large B-cell lymphoma. *Clin Lymphoma Myeloma Leuk*. 2021;21(3):176–81.
 24. Hutchings M. The evolving therapy of DLBCL: bispecific antibodies. *Hematol Oncol*. 2023;41(S1): 107–11.
 25. Borchmann P, Heger JM, Mahlich J, Papadimitriou MS, Riou S, Werner B. Survival outcomes of patients newly diagnosed with diffuse large B-cell lymphoma: real-world evidence from a German claims database. *J Cancer Res Clin Oncol*. 2023;149(10): 7091–101.
 26. Daneels W, Roskamp M, Macq G, Saadoon EI, De Geyndt A, Offner F, et al. Real-world estimation of first- and second-line treatments for diffuse large B-cell lymphoma using health insurance data: a Belgian population-based study. *Front Oncol*. 2022;12: 824704.
 27. Müller S, Brandes A, Knierim J, Novakovic M, Wilke T, Maywald U, et al. Epidemiology, diagnostics, and treatment of narcolepsy in Germany: the DORMIO study. *J Sleep Med*. 2021;18(2):88–99.
 28. Pflichtversicherungsgrenze Versicherungspflichtgrenze GKV PKV. <https://www.versicherungspflichtgrenzen.de/html/pflichtversicherungsgrenzen.html>. Accessed 09 Jan 2024
 29. GKV Spitzenverband. Statutory health insurance. https://www.gkv-spitzenverband.de/english/statutory_health_insurance/statutory_health_insurance.jsp. Accessed 09 Jan 2024
 30. Chae JW, Song CS, Kim H, Lee KB, Seo BS, Kim DI. Prediction of mortality in patients undergoing maintenance hemodialysis by Charlson Comorbidity Index using ICD-10 database. *Nephron Clin Pract*. 2011;117(4):c379–84.
 31. Yang X, Laliberté F, Germain G, Raut M, Duh MS, Sen SS, et al. Real-world characteristics, treatment patterns, health care resource use, and costs of patients with diffuse large B-cell lymphoma in the U.S *Oncologist*. 2021;26(5):e817–26.
 32. Lenz G, Chapuy B, Glaß B, Keil F, Klapper W, Nickelsen M, et al (2021). Diffuses großzelliges B-Zell-Lymphom. <https://www.onkopedia.com/de/onkopedia/guidelines/diffuses-grosszelliges-b-zell-lymphom/@guideline/html/index.html>. Accessed 13 Feb 2023
 33. Jacob L, Kalder M, Kostev K. Decrease in the number of patients diagnosed with cancer during the COVID-19 pandemic in Germany. *J Cancer Res Clin Oncol*. 2022;148(11):3117–23.
 34. Mevius A, Müller S, Wilke T, Maywald U. The impact of COVID-19 pandemic on the detection and management of cancer: a German claims data analysis abstract EPH144. *Value Health*. 2022. <https://doi.org/10.1016/j.jval.2022.09.1065>.
 35. Diamond A, Bensken WP, Vu L, Koroukian SM, Caimi PF. Outcomes and characteristics of untreated diffuse large B-cell lymphoma (DLBCL) patients: a SEER-medicare database analysis. *Blood*. 2022;140(Supplement 1):10979–80.
 36. Susanibar-Adaniya S, Barta SK. 2021 Update on Diffuse large B cell lymphoma: a review of current data and potential applications on risk stratification and management. *Am J Hematol*. 2021;96(5): 617–29.
 37. Smith A, Crouch S, Howell D, Burton C, Patmore R, Roman E. Impact of age and socioeconomic status on treatment and survival from aggressive lymphoma: a UK population-based study of diffuse large B-cell lymphoma. *Cancer Epidemiol*. 2015;39(6):1103–12.
 38. VFA. Klinische Studien: Langsam, bürokratisch. <https://www.vfa.de/de/arzneimittel-forschung/klinische-studien/klinische-studien-langsam-buerokratisch>. Accessed 09 Feb 2024
 39. Pfreundschuh M, Trümper L, Österborg A, Pettengell R, Trneny M, Imrie K, et al. CHOP-like chemotherapy plus rituximab versus CHOP-like chemotherapy alone in young patients with good-prognosis diffuse large-B-cell lymphoma: a randomised controlled trial by the MabThera International Trial (MInT) Group. *Lancet Oncol*. 2006;7(5): 379–91.

40. Morrison VA, Shou Y, Bell JA, Hamilton L, Ogbonaya A, Raju A, et al. Evaluation of treatment patterns and survival among patients with diffuse large B-cell lymphoma in the USA. *Future Oncol.* 2019;15(9):1021–34.
41. Jones G, Plataras JP, Ng AK, Kelsey CR. The evolving role of radiation therapy in DLBCL: from early-stage to refractory disease. *Oncology (Williston Park).* 2022;36(12):718–27.
42. Hopfinger G, Rupp B, Greil R. Barriers to patient access of CAR T cell therapies in Austria. *memo Magaz Eur Med Oncol.* 2023;16(1):79–90.
43. EMA (2022) Breyanzi. <https://www.ema.europa.eu/en/medicines/human/EPAR/breyanzi>. Accessed 13 Mar 2023
44. DRST (2022) Deutsches Register für Stammzelltransplantationen Jahresberichte. <https://www.drst.de/drst/download.html>. Accessed 13 Mar 2023
45. Frontzek F, Karsten I, Schmitz N, Lenz G. Current options and future perspectives in the treatment of patients with relapsed/refractory diffuse large B-cell lymphoma. *Ther Adv Hematol.* 2022;13:20406207221103320.
46. EMA (2020) Polivy. <https://www.ema.europa.eu/en/medicines/human/EPAR/polivy>. Accessed 13 Apr 2023
47. EMA (2021) Minjuvi. <https://www.ema.europa.eu/en/medicines/human/EPAR/minjuvi>. Accessed 13 Apr 2023
48. Onkologie L (2022) Diagnostik, Therapie und Nachsorge für erwachsene Patient*innen mit einem diffusen großzelligen BZell-Lymphom und verwandten Entitäten. https://www.leitlinienprogramm-onkologie.de/fileadmin/user_upload/Downloads/Leitlinien/DLBCL/Version_1/LL_DLBCL_Langversion_1.0.pdf. Accessed 25 Apr 2023
49. Kumar AJ, Henzer T, Rodday AM, Parsons SK. Chemotherapy is administered to a minority of hospitalized patients with diffuse large B-cell lymphoma and is associated with less likelihood of death during hospitalization. *Cancer Epidemiol.* 2018;53:137–40.