



<https://doi.org/10.1038/s42003-024-06424-x>

# Author Correction: Contribution of host species and pathogen clade to snake fungal disease hotspots in Europe

Check for updates

Gaëlle Blanvillain , Jeffrey M. Lorch, Nicolas Joudrier, Stanislaw Bury, Thibault Cuenot , Michael Franzen, Fernando Martínez-Freiria , Gaëtan Guiller, Bálint Halpern, Aleksandra Kolanek, Katarzyna Kurek, Olivier Lourdais, Alix Michon, Radka Musilová, Silke Schweiger, Barbara Szulc, Sylvain Ursenbacher, Oleksandr Zinenko & Joseph R. Hoyt

Correction to: *Communications Biology* <https://doi.org/10.1038/s42003-024-06092-x>, published online 10 April 2024

The original version of the article contained errors in the maps presented in Figs. 1 and 4. These have now been corrected in the PDF and HTML versions of the Article.

Original figure:

Figure 1

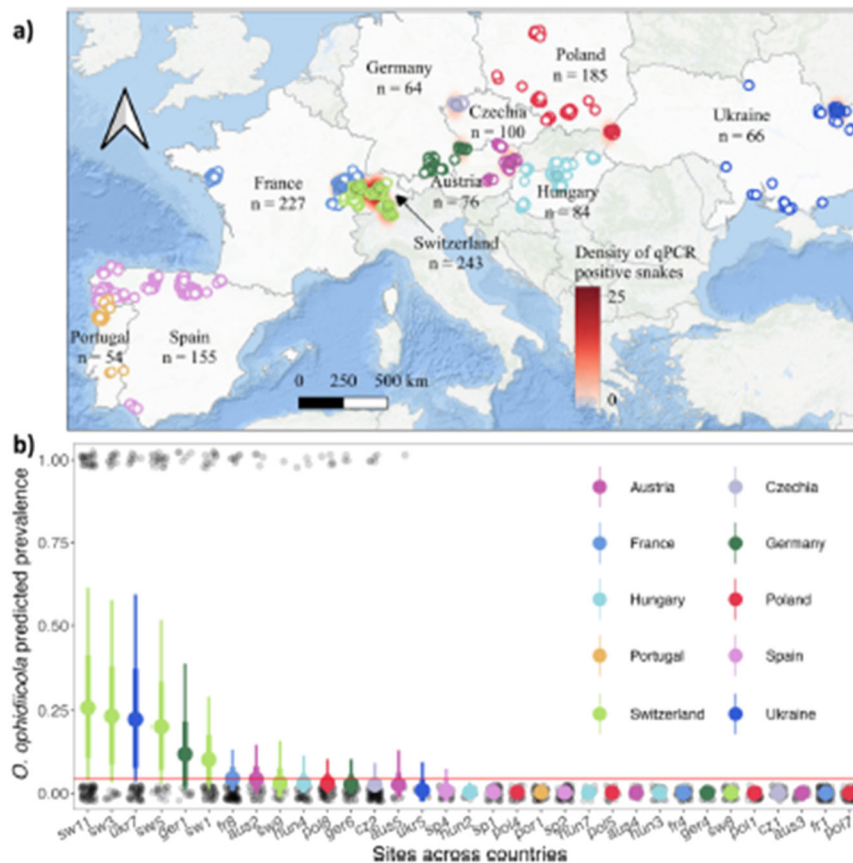
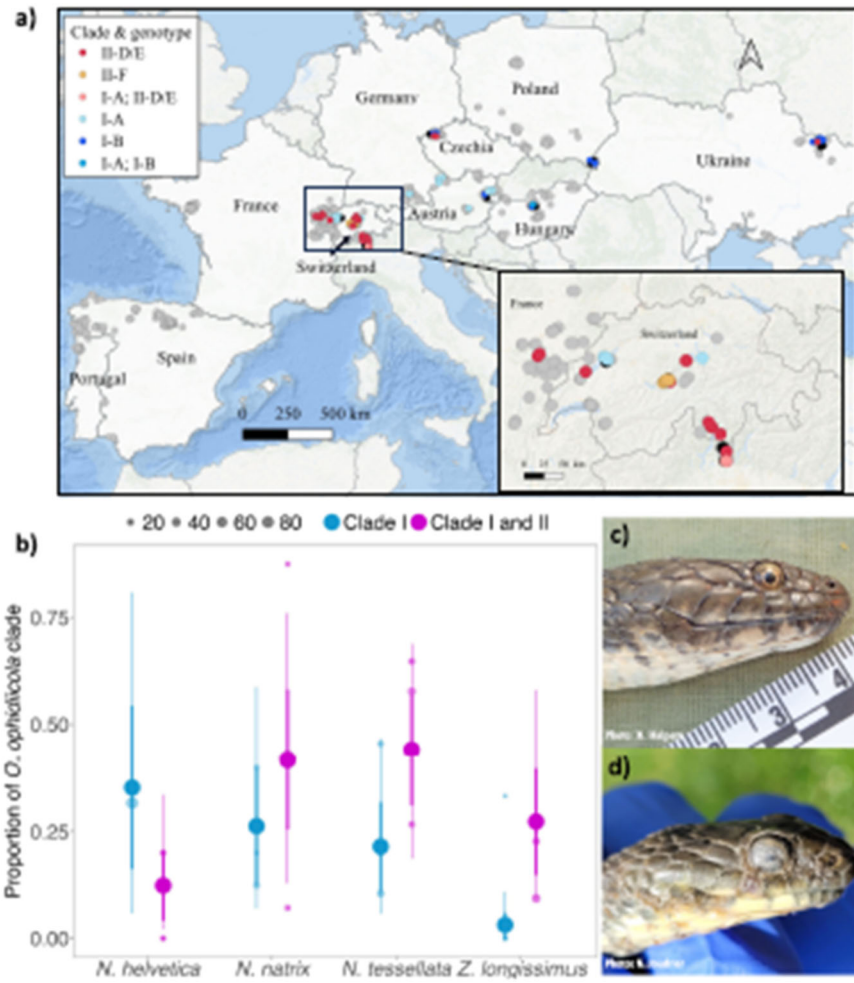


Figure 4



Corrected figure:  
Figure 1

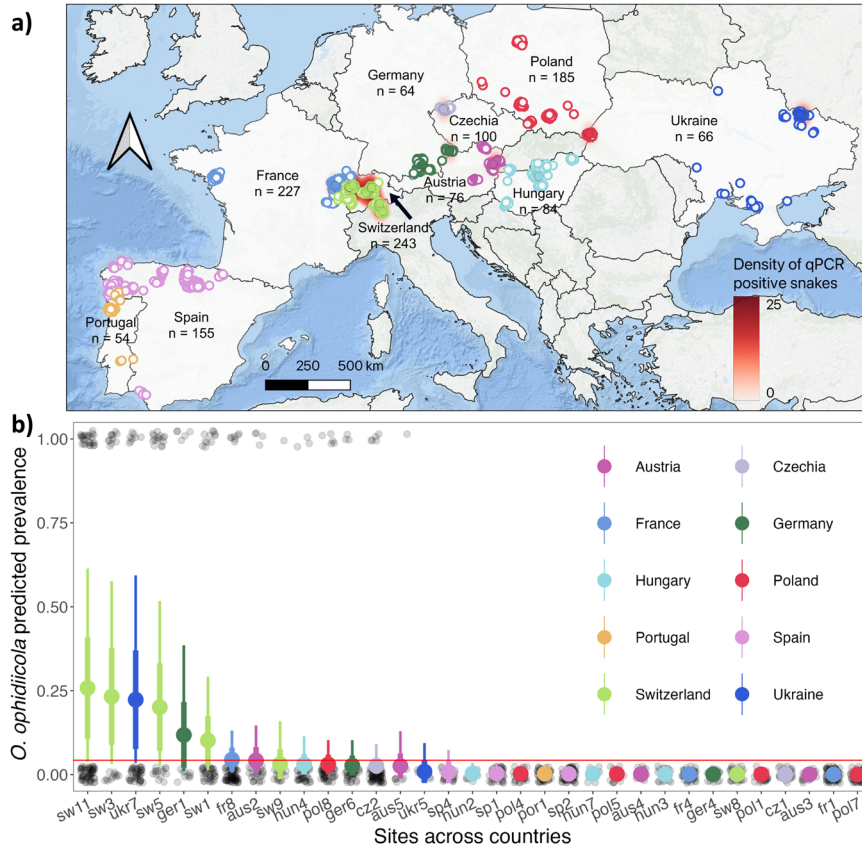
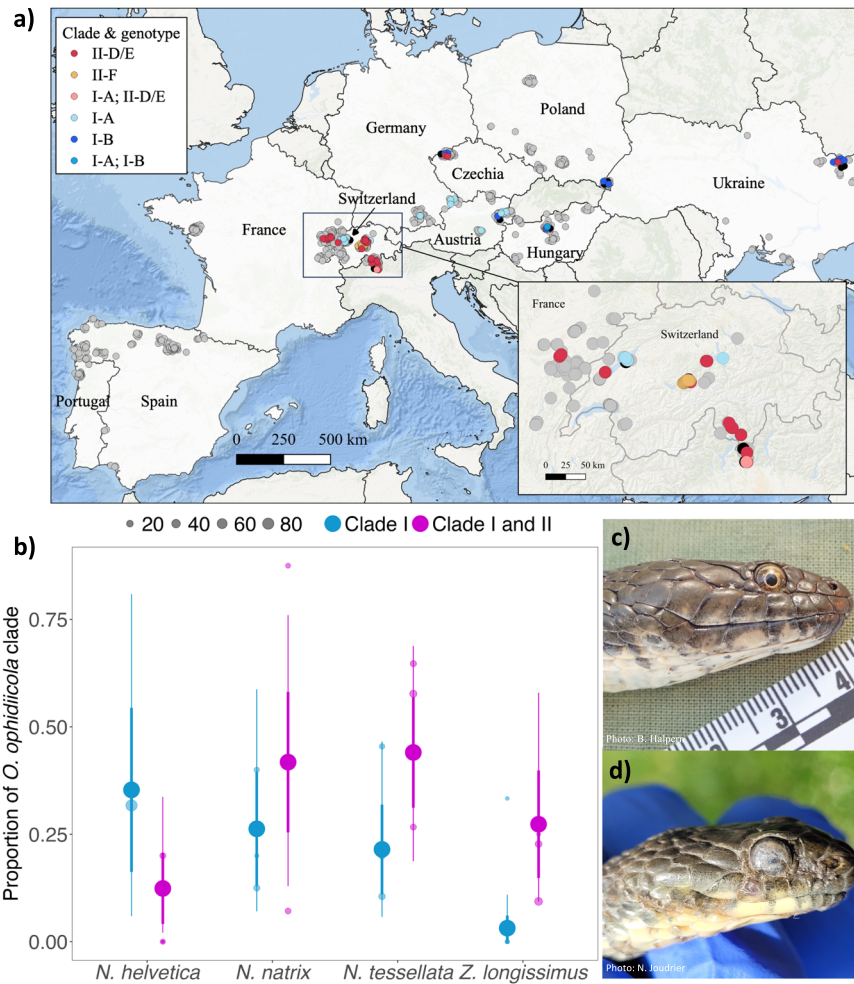


Figure 4



Published online: 25 June 2024

**Open Access** This article is licensed under a Creative Commons Attribution 4.0 International License, which permits use, sharing, adaptation, distribution and reproduction in any medium or format, as long as you give appropriate credit to the original author(s) and the source, provide a link to the Creative Commons licence, and indicate if changes were made. The images or other third party material in this article are included in the article's Creative Commons licence, unless indicated otherwise in a credit line to the material. If material is not included in the article's Creative Commons licence and your intended use is not permitted by statutory regulation or exceeds the permitted use, you will need to obtain permission directly from the copyright holder. To view a copy of this licence, visit <http://creativecommons.org/licenses/by/4.0/>.

© The Author(s) 2024