

## Corrigendum to—“Identifying local foci of tuberculosis transmission in Moldova using a spatial multinomial logistic regression model” [eBioMedicine 102(2024) 105085]



Yu Lan,<sup>a</sup> Valeriu Crudu,<sup>c</sup> Nelly Ciobanu,<sup>c</sup> Alexandru Codreanu,<sup>c</sup> Melanie H. Chitwood,<sup>a</sup> Benjamin Sobkowiak,<sup>a</sup> Joshua L. Warren,<sup>b,d</sup> and Ted Cohen<sup>a,d,\*</sup>

<sup>a</sup>Department of Epidemiology of Microbial Diseases, Yale School of Public Health, New Haven, CT, USA

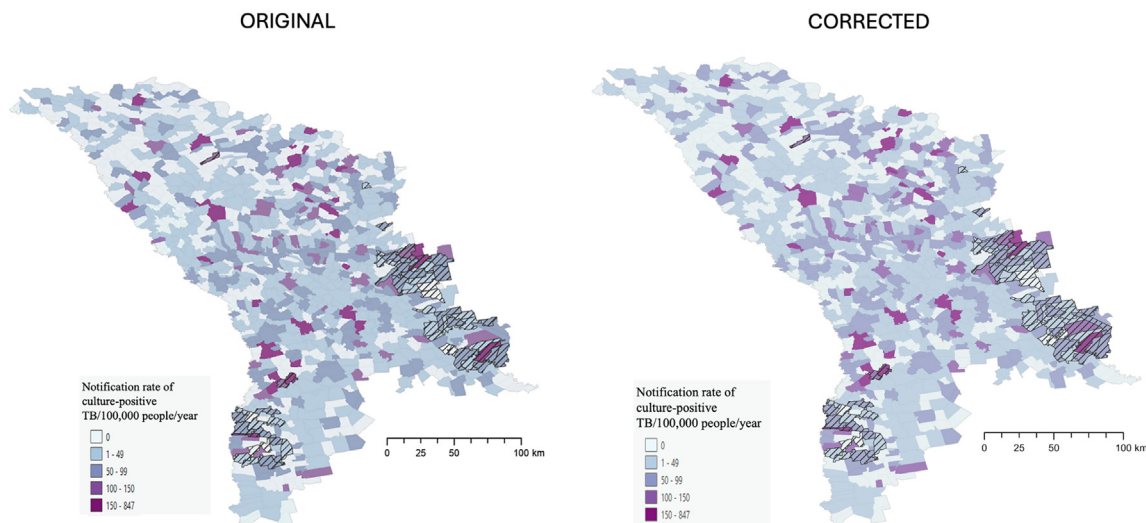
<sup>b</sup>Department of Biostatistics, Yale School of Public Health, New Haven, CT, USA

<sup>c</sup>Phthisiopneumology Institute, Chisinau, Republic of Moldova

The originally submitted version of this article has an error in Fig. 4 which showed the relationship between transmission foci and TB notification rates. Fig. 4 was intended to highlight all transmission foci from the five transmission networks shown from the panel A of Figure 2. The authors mistakenly did not include the localities in which transmission network #120 was focused.

In the corrected version of Fig. 4 we have also included localities in which transmission network #120 was concentrated. The purpose of this figure was to document that areas of high notification rate are not necessarily areas with focal transmission of specific *M. tb* strains (and vice versa); this conclusion is not changed by this correction.

eBioMedicine  
2024;105: 105225  
Published Online xxx  
<https://doi.org/10.1016/j.ebiom.2024.105225>



**Fig. 4:** Localities with high TB notification rates are not necessarily areas where focal transmission was detected. Notification rate of culture-positive TB/100,000/year for 2018–2019 overlaid with highlighted transmission foci (hatch filled) at the locality level demonstrating that many localities with high notification rates were not areas identified as foci of local transmission.

DOI of original article: <https://doi.org/10.1016/j.ebiom.2024.105085>

\*Corresponding author. Department of Epidemiology of Microbial Diseases, Yale School of Public Health, New Haven, CT, USA.

E-mail address: [theodore.cohen@yale.edu](mailto:theodore.cohen@yale.edu) (T. Cohen).

© 2024 The Author(s). Published by Elsevier B.V. All rights are reserved, including those for text and data mining, AI training, and similar technologies.

<sup>d</sup>Co-senior.