



RESEARCH ARTICLE

REVISED Proteomics analysis of carcinogenesis in a rat model of mammary cancer induced by DMBA (7,12-dimethylbenz[a]anthracene) [version 2; peer review: 3 approved]

Dyah Ayu Oktavianie Ardhiana Pratama ¹, Anggun Nur Cahyati², Ulayatul Kustiati ^{3,4}, Andreas Bandang Hardian¹, Fajar Shodiq Permata⁵

¹Laboratory of Veterinary Pathology, Faculty of Veterinary Medicine, Universitas Brawijaya, Malang, East Java, 65143, Indonesia

²Study Program of Veterinary Medicine, Faculty of Veterinary Medicine, Universitas Brawijaya, Malang, East Java, 65143, Indonesia

³Laboratory of Veterinary Pharmacology, Faculty of Veterinary Medicine, Universitas Brawijaya, Malang, East Java, 65143, Indonesia

⁴Faculty of Veterinary Medicine, Universitas Gadjah Mada, Yogyakarta, Special Region of Yogyakarta, Indonesia

⁵Laboratory of Veterinary Anatomy, Histology and Embryology, Faculty of Veterinary Medicine, Universitas Brawijaya, Malang, East Java, 65143, Indonesia

V2 First published: 06 Jun 2023, 12:606
<https://doi.org/10.12688/f1000research.132524.1>

Latest published: 05 Aug 2024, 12:606
<https://doi.org/10.12688/f1000research.132524.2>

Abstract

Background: Mammary cancer, called breast cancer in humans, results from the abnormal growth of cells in the mammary glands that attack the surrounding tissue. The process of carcinogenesis at the molecular level can be monitored through the production of proteins as biomarkers for carcinogenesis. 7,12-Dimethylbenz[a]anthracene (DMBA) is a known carcinogenic compound. This study aimed to analyze the proteomic profile as critical data regarding DMBA-induced carcinogenesis in Sprague–Dawley rats.

Methods: Experimental animals were divided into two groups: a treatment group given DMBA at a dose of 10 mg/kg (intramammary) at intervals of 48 hours for a total of 10 doses, and a negative control group that was not given any treatment. Measurement of the total protein concentration was carried out using a spectrophotometer, and the data were analyzed using a t-test, while the characterization of protein profiles was carried out based on molecular weight data using SDS–PAGE. Mammary gland histopathology was evaluated by hematoxylin and eosin (H&E) staining.

Results: The results showed a significant ($p < 0.05$) increase of 27% in

Open Peer Review

Approval Status

	1	2	3
version 2 (revision) 05 Aug 2024			
version 1 06 Jun 2023	 view	 view	 view

version 2

(revision)

05 Aug 2024

version 1

06 Jun 2023



view



view



view

1. **Muhammad Luqman Nordin** , Universiti Malaysia Kelantan, Kota Bharu, Malaysia
2. **Hevi Wihadmadyatami** , Universitas Gadjah Mada, Yogyakarta, Indonesia
3. **Jasni Bin Sabri**, Universiti Malaysia Kelantan, Pengkalan Chepa, Malaysia
Universitas Brawijaya, Malang, Indonesia

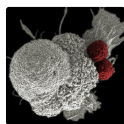
Any reports and responses or comments on the article can be found at the end of the article.

the total protein concentration in the rat mammary cancer model. The results of proteomic characterization showed a protein profile containing proteins of 187, 169, 68, 64, 53, 41, 24, 18, and 14 kDa, which were suspected to be HER-2, Nischarin, COX-2, Albumine, Vimentin, ACTB, TNF, p16, and fatty acid binding protein 3 (FABP3), respectively. Histopathology of the mammary glands showed an irregular and indistinct arrangement of the alveoli and extensive epithelial cell proliferation from the surface to the lumen of the mammary ducts, and the mammary stroma showed the formation of new epithelial cells, which were cancer cells that spread to surrounding tissue.

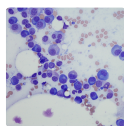
Conclusions: The proteomic profile was strongly associated with morphological alterations in mammary carcinogenesis in a rat model of DMBA-induced mammary cancer.

Keywords

Mammary cancer, DMBA, proteomic, protein profile, histopathology alteration



This article is included in the **Oncology** gateway.



This article is included in the **Cell & Molecular Biology** gateway.

Corresponding author: Dyah Ayu Oktavianie Ardhiana Pratama (dyah_ayu@ub.ac.id)

Author roles: **Pratama DAOA:** Conceptualization, Formal Analysis, Funding Acquisition, Resources, Supervision, Validation, Writing – Original Draft Preparation, Writing – Review & Editing; **Cahyati AN:** Data Curation, Investigation, Methodology, Project Administration, Visualization, Writing – Original Draft Preparation; **Kustiati U:** Data Curation, Writing – Review & Editing; **Hardian AB:** Data Curation, Formal Analysis, Investigation, Methodology, Resources, Supervision, Writing – Review & Editing; **Permata FS:** Data Curation, Formal Analysis, Resources, Supervision, Writing – Review & Editing

Competing interests: No competing interests were disclosed.

Grant information: This work was supported by the DPP/SPP Research Grant from the Faculty of Veterinary Medicine, Universitas Brawijaya (grant number 1273/UN 10.F13.06 /PN/2020) to Dyah Ayu Oktavianie Ardhiana Pratama. *The funders had no role in study design, data collection and analysis, decision to publish, or preparation of the manuscript.*

Copyright: © 2024 Pratama DAOA *et al.* This is an open access article distributed under the terms of the [Creative Commons Attribution License](#), which permits unrestricted use, distribution, and reproduction in any medium, provided the original work is properly cited.

How to cite this article: Pratama DAOA, Cahyati AN, Kustiati U *et al.* **Proteomics analysis of carcinogenesis in a rat model of mammary cancer induced by DMBA (7,12-dimethylbenz[a]anthracene) [version 2; peer review: 3 approved]** F1000Research 2024, 12:606 <https://doi.org/10.12688/f1000research.132524.2>

First published: 06 Jun 2023, 12:606 <https://doi.org/10.12688/f1000research.132524.1>

REVISED Amendments from Version 1

The article has been improved in the introduction, more detailed material and methods, and equipped with picture and description of mammary cancer development in rats.

Any further responses from the reviewers can be found at the end of the article

Introduction

Mammary cancer, called breast cancer in humans, results from the uncontrolled growth of cells in the mammary glands, the glandular ducts extending from the lobule to the nipple, and the surrounding connective tissue. Mammary cancer can spread outside the mammary gland through blood vessels and lymph vessels.¹ The incidence of mammary cancer is high in animals, with incidence rates of between 41 and 53% in female dogs and approximately 86% in female cats.² The uncontrolled spread of cancer cells, or metastasis, can lead to death.³ According to global cancer data, breast cancer is the most commonly diagnosed cancer and the fifth leading cause of death in women.⁴ Mammary gland development and carcinogenesis are thought to include several variables, including molecular and cellular mechanisms. Mammary cancers in animals share clinical, histological, and molecular characteristics with human breast cancers. For this reason, studies on animal models of mammary cancer are highly relevant to correlate prognosis and therapeutic value prior to inclusion in clinical trials.⁵ 7,12-Dimethylbenz[a]anthracene (DMBA) is a carcinogenic substance with cytotoxic, mutagenic, immunosuppressive, and carcinogenic properties.⁶ DNA mutations were previously analyzed *in vitro* and *in vivo* in DMBA-induced mice. This analysis showed that 99% of DNA is depurinated by one-electron oxidation and that the 12-methyl of DMBA binds to the N-7 of adenine or guanine at an adenine:guanine ratio of 1:4. This binding forms a carcinogen-DNA adduct that affects DNA replication, thereby affecting the expression of the encoded protein.⁷

DNA damage caused by carcinogens leads to uncontrolled gene mutations that result in protein changes and dysregulated cell proliferation, triggering the overgrowth of cancer cells.⁸ Proteins are functional components of cells that regulate all cellular activities. Therefore, changes in protein expression in human breast cancer tissue play an important role in carcinogenesis. Malignant transformation at the molecular level can be detected through the excessive production of proteins encoded by oncogenes, namely, genes that stimulate cell growth and differentiation. Breast cancer refers to a group of neoplastic diseases with high intratumoral and intertumoral heterogeneity. Proteomic characterization of breast cancer has been used to understand molecular abnormalities, especially based on the signature of cancer-associated proteins (CAPs), a distinct group of potential cancer-associated biomarkers. Downregulation or upregulation of protein expression may contribute to the dysregulation of cellular functions, leading to tumor development and effects on patient survival.⁹ For example, TNF- α , after binding to TNFR1 on the plasma membrane, activates NF- κ B to promote the survival of tumor cells. Poor patient survival is associated with higher expression of TNF- α because TNF- α is a proinflammatory cytokine whose expression increases during tumor progression.¹⁰ Overexpression of HER-2 in breast cancer can regulate antiapoptotic signals.⁹

Based on this background, advances in understanding the molecular pathophysiology of breast cancer growth have led to the identification of new pathway-specific targeted medicines. With these powerful therapies, treatment strategies are becoming more patient-tailored and molecular-based. This study aimed to characterize the proteomic profile associated with histopathological changes in mammary cancer and can be considered a preliminary study identifying the molecular weights of the proteins expressed in mammary cancer tissue. In addition, the difference between the protein concentration in mammary cancer tissue and that in normal tissue was determined.

Methods**Research design**

This study used rats as experimental animals obtained from and treated at Universitas Brawijaya. Rats were housed and maintained in a temperature-controlled room with a temperature of 21°C, a relative humidity of 45–65% and a 12 h/12 h light/dark cycle, with one week of acclimatization. Rats were provided food and water *ad libitum* during the treatment. Researchers and laboratory staff conducted observations twice a day. The experimental animals selected were 18 female Sprague–Dawley rats (*Rattus norvegicus*), 10 weeks old, weighing 150–170 gr. The sample size was calculated using Federer's formula:

$$(T - 1)(N - 1) > 15$$

T = number of groups

N = number of samples.

This study was performed in accordance with the Animal Research: Reporting of *In Vivo* Experiments (ARRIVE) guidelines.³⁵ All treatments were carried out using the Three Rs principle based on the ARRIVE guidelines. The research was conducted in the laboratory of experimental animals, Faculty of Veterinary Medicine and Biosciences Laboratory, Universitas Brawijaya. Experimental animals were grouped into the control and treatment groups in a completely randomized design (CRD). GraphPad Prism (RRID:SCR_002798) version 8.0 was used to generate the CRD so that all samples received the same treatment. In this study, the number of necessary experimental animals was calculated using Federer's formula to reduce the number of animals used. In this study, we only used healthy animals, both physically and physiologically, so animals that did not meet this requirement were excluded from the experiment.

Ethical statement

We followed the standard ethical guidelines for animal care and use in this study. Moreover, all of the experimental protocols were approved by the Research Ethics Committee of the Universitas Brawijaya, Indonesia (Ethical Clearance No. 079-KEP-UB, approved on July 8th, 2021). The natural habits of the animals were considered, and we placed the animals under appropriate conditions as described above so that any harm, including pain and distress, to those animals was minimized.

Blinding

In this study, researchers and laboratory staff were blinded to the identification numbers of the rats before their assignment to the control or treatment group in this study and remained blinded to those numbers throughout the study. The distribution of animals into the control and treatment groups was carried out using a CRD by laboratory staff who did not otherwise participate in this study to ensure there was no trend in group assignment and to prevent false-positive results.

Animal model procedures

DMBA (Sigma D3254) was dissolved in corn oil and normal saline (NS) at a DMBA:corn oil/NS ratio of 3:1. Tumorigenesis was induced in each rat in the treatment group by intramammary injection of DMBA at a dose of 10 mg/kg body weight (BW) in a 1 ml volume per rat, with 0.5 ml injected into the right and 0.5 ml injected into the left flank. Ten rounds of induction were conducted at 48-hour intervals. The tumors in rats in the treatment group were palpated 1-2 times a week after DMBA injection. The size of visible tumors did not exceed 40 mm, and the formation of only one tumor was induced, based on the guidelines of the Institutional Animal Care and Use Committee (IACUC). The rats in the control group did not receive any injection into the mammary glands. All rats were sacrificed by cervical dislocation, and the nodule that had formed was then excised from each rat in the treatment group, while the mammary gland was excised from each rat in the negative control group. The samples obtained were subjected to hematoxylin and eosin staining to describe the mammary gland structure, and proteomic profiling was carried out using SDS-PAGE (Mini-PROTEAN[®] Tetra Vertical Electrophoresis Cell). This study directly compared protein profiles and mammary gland tissues between normal rats and rats induced with DMBA.

Histopathological examination

Formalin-fixed samples were gradually dehydrated in increasing ethanol concentrations and then cleared in xylene. Then, samples were embedded in paraffin and cut into five-micrometer sections using a rotary microtome. A standard hematoxylin and eosin (H&E) (Leica Biosystem) procedure was used to stain the sections, and images of the slides were acquired under a light microscope.

Protein extraction

All samples were ground to homogeneity using a mortar. Then, 1.5 ml of PBST-PMSF was added to the extract. The suspension was sonicated for 20 minutes and then centrifuged at 6,000 rpm and 25°C for 15 minutes. The supernatant was transferred into a new 500 µl microtube, homogenized by adding absolute ethanol at an ethanol:suspension ratio of 1:1, and stored overnight in the freezer. Next, the sample was centrifuged at 10,000 rpm and 4°C for 15 minutes. The absolute ethanol was discarded, and the extract was air-dried until the odor of ethanol was no longer detectable and was then homogenized by adding 100 µl of Tris-HCl (pH 6.8). The extracts were stored at -20°C.

NanoDrop spectrophotometry

Protein extraction was followed by NanoDrop spectrophotometry (Thermo Scientific) to measure the concentration and purity of the proteins in the sample. The NanoDrop instrument determines the protein concentration by measuring the absorbance of the sample at 280 nm. Protein concentrations were quantified by comparing the protein concentrations in the control and treatment groups as percentages.

SDS-PAGE

SDS-PAGE was conducted according to the Mini-PROTEAN[®] Tetra Cell (Bio-Rad Laboratories Inc. #cat number 1658005, Berkeley, California) instruction manual. The concentrations of the extracted total protein samples were

equalized to the lowest concentration in any sample, i.e., 21.14 mg/ml, and proteins were then denatured by the addition of Reducing Sample Buffer (SDS, Tris-HCl (pH 6.8), 100% glycerol, mercaptoethanol, and bromophenol blue) at a 1:1 ratio. The samples were then heated at 95°C for 5 minutes. A 12.5% resolving gel and a 3% stacking gel were used. The gel was mounted on the clamping frame and the frame was lowered into the mini tank; then, running buffer was added to the inner compartment of the clamping frame until the compartment was full. Samples that had been heated with RSB were then loaded into each well at a volume of 20 µl, and one well was filled with protein marker. Electrophoresis was performed at 100 V until the tracking dye reached a level of 0.5 cm above the bottom of the resolving gel. The staining process began with the removal of the gel from the plate, and the gel was then placed in a container containing Coomassie blue stain. The gel was incubated with shaking for 10 minutes so that the dye was evenly distributed, and color removal of the remaining dye was performed by overnight incubation with a mixture of methanol, glacial acetic acid, and H₂O in a shaker.

Statistical analysis

The concentrations determined for the control and treatment groups were analyzed with **IBM SPSS Statistics** (RRID: SCR_016479) version 26 using the Shapiro–Wilk normality test and Levene’s test for homogeneity with a significance level of 0.05 ($\alpha = 0.05$). Then, an independent samples t-test was conducted to analyze the difference in concentration between the groups. Two tests were performed with two replicates each. We visualized the bands on the SDS–PAGE gels and predicted the name of the protein corresponding to each band based on calculation of its molecular weight.

Results

Mammary cancer development on the Rat’s mammary gland

Both physical and histopathological examinations revealed the development of mammary cancer due to DMBA induction in the rat’s mammary glands. Nodule examination of the rats’ mammary glands determines the development of mammary cancer. A nodule is a solid, compacted clot that is immovable or stationary. Nodes can be defined as malignant tissue that arises from abnormal proliferation and differentiation of cells (Madewell et al., 2012). Nodes form as a result of the rapid growth of cancer cells in the breast tissue. According to this remark, the nodules discovered in this investigation represent a type of breast cancer. Based on physical examination, the nodules appear on all the mammary glands, with diameter around 2–3 cm (Figure 4).

Total protein concentration

The results of analysis of the average total protein concentrations in the two groups using an independent samples t-test are presented in Table 1.³⁴

Significance analysis using the independent samples t-test showed a Sig (2-tailed) value of 0.006. These results indicated that the two groups had significantly different mean protein concentrations ($p < 0.05$). The total protein concentration in the treatment group was increased by 27% compared to that in the negative control group.

Visualization of the protein profile in mammary glands

The visualization of the protein profile in rat mammary gland tissue samples determined using 12.5% SDS–PAGE is presented in Figure 1. The observable protein bands on the SDS–PAGE gel can describe the state of the carcinogenic process in the rat mammary gland. In addition to the appearance of a protein band, the thickness of the protein band indicates the concentration of the protein. The classification of proteins expressed in rat mammary gland tissue, as determined by electrophoresis, is shown in Table 2.

Histopathological examination

The development of DMBA-induced tumors in the mammary glands of rats in the mammary cancer model was observed through H&E staining. The histology of the mammary glands under normal conditions (control group) in this study showed that the alveoli exhibited a rounded structure with a surface lined with epithelial cells, myoepithelial cells, and basal membranes. The mammary ducts were empty and lined with cuboidal epithelial cells. The stroma comprises

Table 1. Total protein concentrations in the animal model. DMBA, 7,12-dimethylbenz [a]anthracene.

Group	Total protein concentration (mg/ml) ± SD	Improvement compared to control	Sig. (2-tailed)
Control	31.15 ± 7.40		0.006
DMBA-treated	39.65 ± 3.11	27%	

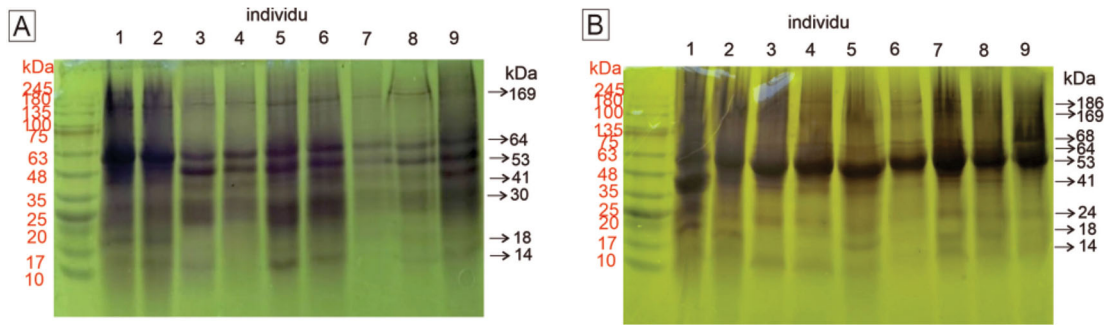


Figure 1. Visualization of the protein profiles of mammary gland samples by SDS-PAGE (12.5%). A. Control group. By gel electrophoresis, seven bands at 14, 18, 30, 41, 53, 64, and 269 kDa were observed in the control group. B. Nine bands at 14, 18, 24, 42, 53, 64, 68, 169, and 186 kDa were observed in the treatment group. Between the control and treatment groups, we observed three different bands. The proteins are described in Table 2. The molecular weights of the proteins in the molecular marker are shown in red, and the molecular weights of proteins in the samples are shown in black.

Table 2. Classification of proteins expressed in rat mammary tissue as visualized by SDS-PAGE. DMBA, 7,12-dimethylbenz [a]anthracene; FABP3, fatty acid binding protein 3.

Protein band	Molecular weight (kDa)		Presumptive protein identification & molecular weight (kDa)	Protein classification
	Control group	DMBA-treated group		
1	-	187	HER-2 (187) Nischarin (166)	Protooncogene-encoded protein
2	169	169		Tumor suppressor protein
3	-	68-71	COX-2 (68)	Inflammatory mediator
4	64	64	Albumine (65)	Plasma protein
5	53-55	53-55	Vimentin (53)	Filament protein
6	41-43	41-43	β -Actin (41)	Filament protein
7	30	-	Prohibitin (29)	Tumor suppressor protein
8	-	22-26	TNF- α (25)	Inflammatory mediator
9	18	18-20	p16 (17)	Tumor suppressor protein
10	13-14	11-14	FABP3 (14)	Tumor suppressor protein

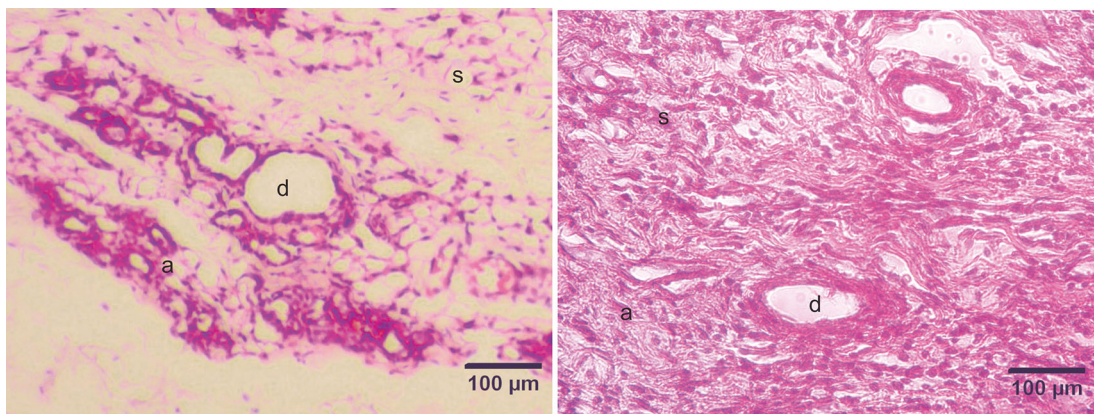


Figure 2. Micrograph of the mammary stroma in mammary tissue from control group rats and DMBA treatment group rats, with hematoxylin and eosin staining. A. Control group. B. Treatment group. The mammary stroma showed the formation of new epithelial cells that were cancer cells and spread to surrounding tissues and hyperplasia with mitotic fibrocytes in the dermis. (a) alveoli; (d) ducts; (s) stroma. Scale bar, 100 μ m. DMBA, 7,12-dimethylbenz [a]anthracene.

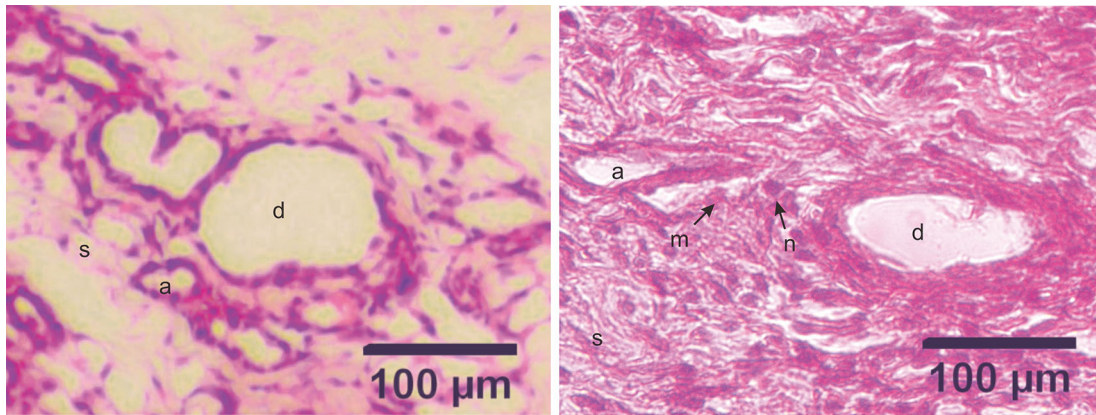


Figure 3. Micrograph of alveoli and mammary ducts in mammary tissue from control group rats and DMBA treatment group rats, with hematoxylin and eosin staining. A. Control group. The alveoli contain irregular and cuboid cells with no hyperchromatic nuclei. B. Treatment group. The alveoli in the treatment group showed an irregular and indistinct arrangement. The epithelial cells were not cuboidal and contained hyperchromatic nuclei. The mammary ducts were filled with proliferating epithelial cells from the surface of the ducts to the lumen of the ducts. (a) alveoli; (d) ducts; (s) stroma; (m) malignant cells (the cells appeared larger); (n) nuclei (hyperchromatic with a large size). Scale bar, 100 µm. DMBA, 7,12-dimethylbenz[a]anthracene.



Figure 4. Mammary cancer development on the rat's mammary gland. The rat's mammary gland showed a formation of solid nodules, compacted clot and immovable, which represent the development of mammary cancer.

connective and fat tissue (Figure 2). Histopathological examination of the mammary glands of rats in the model of DMBA-induced mammary cancer (treatment group) showed an irregular and indistinct arrangement of the alveoli. The epithelial cells were not cuboidal and contained hyperchromatic nuclei. The mammary ducts were filled with proliferating epithelial cells from the surface of the ducts to the lumen of the ducts. The mammary stroma showed the formation of new epithelial cells that were cancer cells and spread to surrounding tissues (Figure 3).

Discussion

In the present study, mammary cancer development in DMBA-induced rats was confirmed by proteomic analysis and histopathological examination of the mammary glands of rats. The total protein concentration in the DMBA-treated rats was increased by 27% compared to that in the control group. This finding is also consistent with a previous study, in which the total Albumin and globulin concentration in a group of female patients with breast cancer had an average value of 7.63 ± 0.14 g/dl and was higher than those in the control group and in the group of healthy women, in which the mean value was 6.14 ± 1.84 g/dl.¹¹ In this study, the difference between the protein concentration in the control group and the DMBA-treated group of rats was thought to be related to proto-oncogenes that play a role in promoting and increasing cell growth and division, which can become activated if there is an alteration or mutation. The increased appearance of oncoprotein bands is a characteristic related to excessive oncoprotein expression in cells. There is an increase in the production of mRNA transcripts of oncogenes and in the number of copies of oncogenes.¹² The carcinogenesis process at the molecular level can be detected by the excessive production of oncoproteins. Activation of oncogenes stimulates faulty production of growth factor receptors, indicating continued growth in the absence of external stimuli. Uncontrolled cell division without cell maturation causes impaired cell differentiation.¹³ At a later stage, impaired cell differentiation causes malignant transformation of cells. In this study, exposure to DMBA as a carcinogenic agent caused changes in the nucleotide sequence of proto-oncogene DNA, resulting in changes in gene expression.¹⁴

Proteomic profiling was performed using SDS–PAGE to visualize changes in gene expression in DMBA-treated rats. The observable protein profile can describe the state of carcinogenesis in rat mammary gland tissue. In addition to the appearance of a protein band, the thickness of the protein band indicates the protein concentration. According to the results of this study, a protein with a molecular weight of 187 kDa was expressed in the DMBA-treated group but not in the control group. This protein is suspected to be the HER-2 protein, which has a molecular weight of 185 kDa (<https://www.uniprot.org/uniprotkb/Q00316/entry>).¹⁵ HER-2 is a proto-oncogene that controls the growth and development of mammary epithelial cells. In mammary carcinomas in rats, there is amplification of this gene such that the cell division rate is doubled and cell growth increases.¹⁶ DNA damage due to DMBA exposure results in a single-amino acid mutation by substituting a valine residue in the transmembrane domain with glutamic acid.¹⁷ This substitution induces dimerization of the HER-2 oncoprotein in the cell membrane, with results similar to the induction of activation by growth factors so that activation continues even in the absence of external growth stimuli.¹⁸ Overexpression of the HER-2 gene occurs in approximately 15–30% of breast cancers and correlates with cell proliferation.¹⁹ This finding relates to the histopathological appearance shown in **Figure 1B**, which was characterized by cell proliferation in the alveoli and from the surface to the lumen of the mammary ducts.

A protein band with a molecular weight of 169 kDa was visible in all tissues, in both the negative control and DMBA-treated groups, and there was no difference in the protein band thickness between the two groups. The corresponding protein was considered to be Nischarin, with a molecular weight of 166 kDa (<https://www.uniprot.org/uniprotkb/A0A8I5ZTG9/entry>). Nischarin is an integrin-binding protein known to be a novel tumor suppressor and to play a critical role in mammary cancer cell migration and invasion in rats.²⁰ Research conducted by Chang *et al.*²¹ showed that increased Nischarin expression in tumor cells reduces the invasive and migratory abilities of cancer cells. Analysis of a total of 962 patients with breast cancer revealed that 0.3% of invasive carcinomas showed loss of Nischarin expression and that 0.7% of invasive carcinomas expressed mutated Nischarin.²²

A protein band with a molecular weight of 68 kDa was observed in all mammary gland samples of DMBA-treated rats and was not observed in samples from negative control rats. The corresponding protein was suspected to be the COX-2 protein, with a molecular weight of 69 kDa (<https://www.uniprot.org/uniprotkb/Q8CIP1/entry>). COX-2 plays a role in the conversion of arachidonic acid to prostaglandins. COX-2 induces angiogenesis through three products, thromboxane A₂, prostacyclin, and prostaglandin E₂, which stimulate vascular endothelial growth factor (VEGF) production in angiogenesis. COX-2 upregulation is observed in 40% of patients with invasive breast carcinoma and correlates with poor prognosis. COX-2 upregulation promotes tumor formation and progression to metastasis, in addition to increases in angiogenesis, cell migration, and invasion.²³ This finding can be related to the histopathological image shown in **Figure 3B**, which shows the formation of new epithelial cells in the mammary stroma that were cancer cells spreading to the surrounding tissues.

A protein band with a molecular weight of 64 kDa was observed in all mammary cancer tissues and all normal tissues, but there was a difference in the appearance of the bands formed. The band visualized in the negative control sample was thicker than the band visualized in the treatment group sample. This indicates a reduction in the concentration of the protein in the treatment group sample. The corresponding protein was thought to be Albumine, with a molecular weight of 65 kDa (<https://www.uniprot.org/uniprotkb/A0A0G2JSH5/entry>). Cancer and lack of nutrition are among the causes of a decreased Albumine level. Cancer cells proliferate over an indefinite period of time, and the number continues to

increase. Under these conditions, cancer cells and normal cells compete for nutrients. Cancer cells require all available nutrients, resulting in the death of normal cells due to a lack of nutrients.

A protein band with a molecular weight of 53 kDa was observed in all negative and DMBA-treated samples. There was a thickening of the band in all treatment group samples. The corresponding protein was suspected to be Vimentin, which has a molecular weight of 53 kDa (<https://www.uniprot.org/uniprotkb/P31000/entry>). Vimentin is a protein that forms intermediate filaments, which are components of the cytoskeleton, and is expressed in cells that are embryonically derived from the mesenchyme and in epithelial cells.²⁴ Vimentin is used as a marker of mesenchymal cells or cells undergoing epithelial-to-mesenchymal transition (EMT) during normal and metastatic development.²⁵

In both groups, a 41 kDa protein band was visible, but in the DMBA-treated group, the band was thickened. This protein was predicted to be actin (ACTB), which has a molecular weight of 41 kDa (<https://www.uniprot.org/uniprotkb/Q9JLX9/entry>). ACTB plays important roles in cell migration and division. Analysis of ACTB expression based on The Cancer Genome Atlas (TCGA) database showed abnormal expression of ACTB in breast cancer cases with mutation or amplification of ACTB. That study also showed that ACTB expression in invasive breast carcinoma tissue was higher than that in normal tissue and that there was a relationship between high ACTB expression and poor prognosis in breast cancer.²⁶

Negative control samples showed a protein band with a molecular weight of 30 kDa that was not observed in DMBA-treated samples. The corresponding protein was thought to be prohibitin, which weighs 29 kDa (<https://www.uniprot.org/uniprotkb/Q5XIH7/entry>). Prohibitin can inhibit cell proliferation by inducing blockade of the S/G2 transition and promoting apoptosis.²⁷ A study conducted by Najm *et al.*²⁸ in cancers showed a missense mutation located in the sequence of the prohibitin gene encoding the Rb-binding domain, causing the production of abnormal protein products and loss of activity.

The protein band with a molecular weight of 24 kDa was observed only in the DMBA-treated group. The corresponding protein was predicted to be TNF- α , with a molecular weight of 25 kDa (<https://www.uniprot.org/uniprotkb/P16599/entry>). In a mammary cancer model, rats with mammary cancer showed greater proinflammatory cytokine secretion than normal rats. This is thought to be due to an enhanced immune response associated with increased immune cell activity due to the presence of antigens. Cancer cells express antigens in the form of mutated genes or overexpressed normal proteins. These antigens are recognized by the immune system to elicit an immune response.²⁹

The protein band showing a molecular weight of 18 kDa was observed in all treatment group samples except for K3 and K4. This protein was considered to be p16 in the INK4 family, with a molecular weight of 17 kDa (<https://www.uniprot.org/uniprotkb/Q9R0Z3/entry>). The INK family is a family of cyclin-dependent kinase inhibitors that can inhibit Cdk activity by forming a stable complex with Cdk proteins, thereby preventing Cdk proteins from binding to cyclin D during the cell cycle. Deregulation of the cell cycle is a crucial feature of carcinogenesis. P16 is one of the proteins involved in the cell cycle. The expression of p16 in cancer can constitutively inactivate the tumor suppressor retinoblastoma (Rb). The change in p16 expression leads to gene downregulation and promotes the formation of epithelial cancers.³⁰ In this study, seven treatment group samples expressed the p16 protein, while the other two did not, a phenomenon thought to indicate the heterogeneity of this type of cancer. An association with p16 overexpression was found for breast cancer, and p16 expression was found to be a prognostic indicator in breast cancer.³⁰ In both of these cases, the luminal A subtype showed lower p16 expression than the other subtypes. In contrast, the triple-negative subtype showed higher p16 expression than the other subtypes. Some cancers occur due to the complete loss or malfunction of tumor suppressor genes. According to Musyarifah *et al.*,³¹ positive p16 expression is more likely to be present in cancers with higher stages and higher histopathological degrees.

Regarding the protein band showing a molecular weight of 14 kDa, observed in the negative and treatment groups, the corresponding protein was suspected to be fatty acid binding protein 3 (FABP3), with a molecular weight of 14 kDa (<https://www.uniprot.org/uniprotkb/A0A8I6A2E9/entry>). FABP3 plays roles in fatty acid transport, cell growth, and gene transcription. In cancer, this protein acts as a tumor suppressor.³² Reduced FABP3 expression in breast cancer cells was confirmed to occur by hypermethylation of the FABP3 promoter.³³ Hypermethylation is an increase in methylation in DNA that should not be methylated. Inhibition of transcription due to DNA methylation in the promoter prevents the gene from being expressed. Research on the molecular characteristics of mammary cancer as markers of cancer incidence has provided new information regarding the molecular heterogeneity of tumors. Molecular characterization has revolutionized mammary cancer research and the choice of therapy. Because mammary cancer in animals or breast cancer in humans is a disease with a high mortality rate, consideration of molecular profiling is anticipated to be very important in the selection of treatment options and development of new drugs.

Conclusions

The total protein concentration in the mammary tissues of rats with DMBA-induced mammary cancer was significantly increased by 27%. The proteins determined by SDS–PAGE to be expressed in mammary tissues in the rat model of DMBA-induced mammary cancer were thought to be HER-2, Nischarin, COX-2, Albumine, Vimentin, Actin, TNF- α , p16, and FABP3. DMBA induction can activate the expression of mammary cancer marker proteins, such as HER-2 and COX-2, and reduce the expression of the prohibitin protein, which plays a role in mammary carcinogenesis. The protein profile of mammary tissue was associated with its histopathological appearance, which showed an irregular and indistinct arrangement of the alveoli, proliferation of mammary duct epithelial cells, and the formation of new epithelial cells in the mammary stroma. In this study, we found that proteins with altered expression in cancer can be markers of tumorigenesis, diagnostic and prognostic markers, and therapeutic targets. This study discusses protein expression in an animal model of DMBA-induced mammary cancer. We found several potential protein biomarkers related to breast cancer development pathways. We hope these findings will encourage further clinical validation studies and provide insights and directions for future research.

Data availability

Underlying data

Zenodo: The Role of Proteomics Analysis in Carcinogenesis in a Rat Mammary Cancer Model Induced by DMBA (7,12-dimethylbenz(α)anthracene). <https://doi.org/10.5281/zenodo.7796773>.³⁴

This project contains the following underlying data:

- Protein Molecular Weight.xlsx
- Protein Nanodrop Spectrophotometer.xlsx

Reporting guidelines

Zenodo: ARRIVE checklist for ‘The role of proteomics analysis in carcinogenesis in a rat mammary cancer model induced by DMBA (7,12-Dimethylbenz[a]anthracene)’. <https://doi.org/10.5281/zenodo.7839767>.³⁵

Data are available under the terms of the [Creative Commons Attribution 4.0 International license](https://creativecommons.org/licenses/by/4.0/) (CC-BY 4.0).

Acknowledgments

The authors would like to thank the Faculty of Veterinary Medicine, Universitas Brawijaya, for awarding the research grant. The authors also thank the Laboratory of Veterinary Pathology and the Animal Disease Diagnostic (ADD) Laboratory, Faculty of Veterinary Medicine, Universitas Brawijaya, for facilitating this research project.

References

1. Fernandez-Martinez A, Krop IE, Hillman DW, *et al.*: **Survival, pathologic response, and genomics in CALGB 40601 (Alliance), a neoadjuvant Phase III trial of paclitaxel-trastuzumab with or without lapatinib in HER2-positive breast cancer.** *J. Clin. Oncol.* 2020; **38**(35): 4184–4193. [PubMed Abstract](#) | [Publisher Full Text](#) | [Free Full Text](#)
2. Badowska-Kozakiewicz AM, Ferguson NL, Bell J, *et al.*: **Prevalence and Etiology of the Most Common Malignant Tumours in Dogs and Cats.** *Bulg. J. Vet. Med.* 2006; **9**(2): 85–98.
3. Dobson JM: **Breed-Predispositions to Cancer in Pedigree Dogs.** *ISRN Vet. Sci.* 2013; **2013**: 1–23. [Publisher Full Text](#)
4. Chhikara BS, Parang K: **Global Cancer Statistics 2022: the trends projection analysis.** *Chem. Biol. Lett.* 2023; **10**(1): 1–16.
5. Nordin ML, Osman AY, Shaari R, *et al.*: **Recent overview of mammary cancer in dogs and cats: Classification, risk factors and future perspectives for treatment.** *IOSR J. Agric. Vet. Sci.* 2017; **10**(8): 64–69.
6. Pugalendhi P, Manoharan S, Suresh K, *et al.*: **Dimethylbenz [a] Anthracene (Dmba) Induced Mammary Carcinogenesis in Sprague-Dawley Rats.** *Afr. J. Tradit. Complement. Altern. Med.* 2011; **8**(2): 12.
7. Abba MC, Zhong Y, Lee J, *et al.*: **DMBA induced mouse mammary tumors display high incidence of activating Pik3caH1047 and loss of function Pten mutations.** *Oncotarget.* 2016; **7**(39): 64289–64299. [PubMed Abstract](#) | [Publisher Full Text](#) | [Free Full Text](#)
8. Morihito RVSA, Chungdinata SE, Nazareth TA, *et al.*: **Identifikasi Perubahan Struktur Dna Terhadap Pembentukan Sel Kanker Menggunakan Dekomposisi Graf.** *J. Ilm. Sains.* 2017; **17**(2): 153. [Publisher Full Text](#)
9. Neagu AN, Jayathirtha M, Whitham D, *et al.*: **Proteomics-Based Identification of Dysregulated Proteins in Breast Cancer.** *Proteomes.* 2022; **10**(4): 1–28. [PubMed Abstract](#) | [Publisher Full Text](#) | [Free Full Text](#)
10. Peng F, Liao M, Qin R, *et al.*: **Regulated cell death (RCD) in cancer: key pathways and targeted therapies.** *Signal Transduct. Target. Ther.* 2022; **7**(1): 286. [PubMed Abstract](#) | [Publisher Full Text](#) | [Free Full Text](#)
11. Al-Muhtaseb SI: **Serum and saliva protein levels in females with breast cancer.** *Oncol. Lett.* 2014; **8**(6): 2752–2756. [PubMed Abstract](#) | [Publisher Full Text](#) | [Free Full Text](#)
12. Ahmadi SE, Rahimi S, Zarandi B, *et al.*: **MYC: a multipurpose oncogene with prognostic and therapeutic implications in**

- blood malignancies. *J. Hematol. Oncol.* 2021; Vol. **14**(1): 121. BioMed Central.
[PubMed Abstract](#) | [Publisher Full Text](#) | [Free Full Text](#)**
13. Hanahan D: **Hallmarks of Cancer: New Dimensions.** *Cancer Discov.* 2022; **12**(1): 31–46.
[PubMed Abstract](#) | [Publisher Full Text](#)
14. Tomesz A, Szabo L, Molnar R, *et al.*: **Effect of 7,12-Dimethylbenz (a) anthracene on the Expression of miR-330, miR-29a, miR-9-1, miR-9-3 and the mTORC1 Gene in CBA/Ca Mice.** *In Vivo.* 2020; **34**(5): 2337–2343.
[PubMed Abstract](#) | [Publisher Full Text](#) | [Free Full Text](#)
15. Matic S, Quagliano E, Arata L, *et al.*: **The rat ErbB2 tyrosine kinase receptor produced in plants is immunogenic in mice and confers protective immunity against ErbB2+ mammary cancer.** *Plant Biotechnol. J.* 2016; **14**(1): 153–159.
[PubMed Abstract](#) | [Publisher Full Text](#)
16. Feng Y, Spezia M, Huang S, *et al.*: **Breast cancer development and progression: Risk factors, cancer stem cells, signaling pathways, genomics, and molecular pathogenesis.** *Genes Dis.* 2018; **5**(2): 77–106.
[PubMed Abstract](#) | [Publisher Full Text](#) | [Free Full Text](#)
17. Hamza AA, Khasawneh MA, Elwy HM, *et al.*: **Salvadora persica attenuates DMBA-induced mammary cancer through downregulation oxidative stress, estrogen receptor expression and proliferation and augmenting apoptosis.** *Biomed. Pharmacother.* 2022; **147**: 112666.
[PubMed Abstract](#) | [Publisher Full Text](#)
18. Zhang Y, Zhang Q, Cao Z, *et al.*: **HOXD3 Plays a Critical Role in Breast Cancer Stemness and Drug Resistance.** *Cell. Physiol. Biochem.* 2018; **46**(4): 1737–1747.
[PubMed Abstract](#) | [Publisher Full Text](#)
19. Iqbal N, Iqbal N: **Human Epidermal Growth Factor Receptor 2 (HER2) in Cancers: Overexpression and Therapeutic Implications.** *Mol. Biol. Int.* 2014; **2014**: 1–9.
[PubMed Abstract](#) | [Publisher Full Text](#) | [Free Full Text](#)
20. Cai YJ, Ma B, Wang ML, *et al.*: **Impact of Nischarin on EMT regulators in breast cancer cell lines.** *Oncol. Lett.* 2020; **20**(6): 1–8.
[PubMed Abstract](#) | [Publisher Full Text](#) | [Free Full Text](#)
21. Chang C, Wei W, Han D, *et al.*: **Expression of Nischarin negatively correlates with estrogen receptor and alters apoptosis, migration and invasion in human breast cancer.** *Biochem. Biophys. Res. Commun.* 2017; **484**(3): 536–542.
[PubMed Abstract](#) | [Publisher Full Text](#)
22. Maziveyi M, Alahari SK: **Breast cancer tumor suppressors: A special emphasis on novel protein nischarin.** *Cancer Res.* 2015; **75**(20): 4252–4259.
[PubMed Abstract](#) | [Publisher Full Text](#)
23. Esbona K, Inman D, Saha S, *et al.*: **COX-2 modulates mammary tumor progression in response to collagen density.** *Breast Cancer Res.* 2016; **18**(1): 15–35.
[PubMed Abstract](#) | [Publisher Full Text](#) | [Free Full Text](#)
24. Pandita V, Ajila V, Babu GS, *et al.*: **Vimentin and its role as a biomarker in health and disease.** *Gulhane Med. J.* 2021; **63**(4): 232–237.
[Publisher Full Text](#)
25. Ramos I, Stamatakis K, Oeste CL, *et al.*: **Vimentin as a multifaceted player and potential therapeutic target in viral infections.** *Int. J. Mol. Sci.* 2020; **21**(13): 1–27.
[PubMed Abstract](#) | [Publisher Full Text](#) | [Free Full Text](#)
26. Gu Y, Tang S, Wang Z, *et al.*: **A pan-cancer analysis of the prognostic and immunological role of β -actin (ACTB) in human cancers.** *Bioengineered.* 2021; **12**(1): 6166–6185.
[PubMed Abstract](#) | [Publisher Full Text](#) | [Free Full Text](#)
27. Liu P, Xu Y, Zhang W, *et al.*: **Prohibitin promotes androgen receptor activation in ER-positive breast cancer.** *Cell Cycle.* 2017; **16**(8): 776–784.
[PubMed Abstract](#) | [Publisher Full Text](#) | [Free Full Text](#)
28. Najm M, Sadaf A, Akhtar N, *et al.*: **Prohibitin gene regulation in cancer and its possible therapeutic potential.** *J. Curr. Oncol.* 2021; **4**(1): 35.
[Publisher Full Text](#)
29. Criscitiello C: **Tumor-associated antigens in breast cancer.** *Breast Care.* 2012; **7**(4): 262–266.
[PubMed Abstract](#) | [Publisher Full Text](#) | [Free Full Text](#)
30. Salih MM, Higgo AA, Eed EM: **Prognostic Significance of p16 Protein Expression in Breast Cancer.** *In Vivo.* 2022; **36**(1): 336–340.
[PubMed Abstract](#) | [Publisher Full Text](#) | [Free Full Text](#)
31. Musyarifah Z, Agus S, Yenita Y, *et al.*: **Hubungan Ekspresi Protein 16 (p16) dengan Derajat Histopatologik dan Invasi Perineural pada Karsinoma Sel Skuamosa Kepala dan Leher.** *Jurnal Kesehatan Andalas.* 2020; **9**(3): 282.
[Publisher Full Text](#)
32. Tang Z, Shen Q, Xie H, *et al.*: **Elevated expression of FABP3 and FABP4 cooperatively correlates with poor prognosis in non-small cell lung cancer (NSCLC).** *Oncotarget.* 2016; **7**(29): 46253–46262.
[PubMed Abstract](#) | [Publisher Full Text](#) | [Free Full Text](#)
33. Lopes-Coelho F, André S, Félix A, *et al.*: **Breast cancer metabolic cross-talk: Fibroblasts are hubs and breast cancer cells are gatherers of lipids.** *Mol. Cell. Endocrinol.* 2018; **462**: 93–106.
[PubMed Abstract](#) | [Publisher Full Text](#)
34. Pratama DA, Cahyati AN, Permata FS, *et al.*: **The Role of Proteomics Analysis in Carcinogenesis in a Rat Mammary Cancer Model Induced by DMBA (7,12-dimethylbenz(a)anthracene).** [Dataset]. *Zenodo.* 2023.
[Publisher Full Text](#)
35. Pratama DA, Cahyati AN, Permata FS, *et al.*: **ARRIVE checklist for The role of proteomics analysis in carcinogenesis in a rat mammary cancer model induced by DMBA (7,12-Dimethylbenz [a] anthracene).** [Dataset]. *Zenodo.* 2023.
[Publisher Full Text](#)

Open Peer Review

Current Peer Review Status:   

Version 1

Reviewer Report 05 August 2024

<https://doi.org/10.5256/f1000research.145453.r305378>

© 2024 Sabri J. This is an open access peer review report distributed under the terms of the [Creative Commons Attribution License](#), which permits unrestricted use, distribution, and reproduction in any medium, provided the original work is properly cited.



Jasni Bin Sabri

¹ Universiti Malaysia Kelantan, Pengkalan Chepa, Kelantan, Malaysia

² Faculty of Veterinary Medicine, Universitas Brawijaya, Malang, East Java, Indonesia

³ Universiti Malaysia Kelantan, Pengkalan Chepa, Kelantan, Malaysia

⁴ Faculty of Veterinary Medicine, Universitas Brawijaya, Malang, East Java, Indonesia

This is a very good study and has present and future worldwide applications for cancer prognosis and diagnosis that can assist decision making for cancer patient management.

I have a few comments that can be useful to improve the article;

1. The title is good. However, an alternative title is applicable and can be more meaningful as suggested below: " Proteomic Analysis of Mammary Cancer Cells Carcinogenesis Induced by DMBA (7,12-dimethylbenc[a] in Sprague-Dawley Rats"

Since there are many species of rats, specifically indicating the types of rats used in this study in the title is reasonable. Different rats may respond differently to research methodology and the related materials used.

2. Abstract

a) Background

Line 2, the word "attack" is less scientific and do not much reflect a pathology term (layman). It is better to change it to "infiltrate"...to better define the usual cellular feature of neoplastic cancer growth.

b) Methods: I believe there is no evaluation conducted on histopathological examination (no lesion scoring). The histopathology is only descriptive to support and validate that the proteomic analysis is associated with the tumor successfully induced in the rats.

Therefore the word "evaluated" (last line) should be replaced with " examined".

c) Results: Line 6: the words ".....from the surface to the lumen of mammary duct,...." is unclear. Is this referring to epithelial cells lining the duct that proliferated from the basement membrane (or from the epithelial lining to the basement membrane), to the surface, that is towards the

lumen of the duct? The sentence need to be reconstructed for clarity.

3. Introduction: Sentence No 2, Line 3, "to spread outside the mammary gland": It is better to change these words to "can spread to other organs and tissues". I believe these words are more clearer and meaningful.

3. Histopathology Image (Figure 2)

a) The two images need to be labelled; Which one is A and which one is B? Left or Right? This will help any reader of this article to easily and correctly refer and relate between the details of both images.

b) There is also no cellular description for the image of the control group rat. Since the images of both groups of rats are shown, the description of both, is necessary.

c) The word "hyperplasia" is not accurate for cellular description for tumor (neoplasia). The word hyperplasia is mitosis (cellular division) of normal cells that the body cell proliferation signaling system can control. In contrary, for neoplasia, it is an uncontrolled cellular proliferation associated with carcinogens that stimulates the cellular growth. However, I believed, the hyperplasia in the figure is referring to the fibrocytes. It is also important to describe the mitotic index (high or low) of the mammary cancer cells in this study.

d) The cellular description for the rat in the treatment group can be improved. Importantly, to include the description that strongly suggests the cellular features of malignant neoplasia (cancer), such as pleomorphism (variation in cell sizes and shapes), the mitotic index (high or low) etc. If for instance, neoplastic cells are seen present in the lumen of blood vessels and/or lymphatic vessels (tumor emboli), it would be better because this validate the tumor is malignant, knowing that, only malignant tumors can spread to other body sites (ie: an indication of not a benign tumor). However, seeing these evidences, are of rare occasion and can be exhaustive. Other supportive cellular features of malignancy (pleomorphism, high mitotic index etc.), are acceptable.

d) Figure 3: Which one is the control and Treated group? The left or right image? Labeling is required.

The legend for Figure 3 needs a more clearer description.

For B, the treated group rat, if the cells are not cuboidal? What are the changes in shape when neoplastic? Describe the changes.

This is my opinion for the description of the duct in B as follows;

The duct in the treated group rat is thickened and appeared eosinophilic with less discernable nuclei. The thickened duct shows reduction in size of its lumen.

The duct in the control rat is single layered with visible nuclei of the epithelial cells lining the duct.

e) Conclusion

Second sentence, line 3; The words ".....were thought to be...." can be replaced with better words like, " suggestive of " or "likely".

This conclusion is based on molecular weight data analyses between the protein profiles (proteomic) of the current work and referring to previous studies.

Is the work clearly and accurately presented and does it cite the current literature?

Partly

Is the study design appropriate and is the work technically sound?

Yes

Are sufficient details of methods and analysis provided to allow replication by others?

Yes

If applicable, is the statistical analysis and its interpretation appropriate?

Yes

Are all the source data underlying the results available to ensure full reproducibility?

Yes

Are the conclusions drawn adequately supported by the results?

Yes

Competing Interests: No competing interests were disclosed.

Reviewer Expertise: Pathology: Pathogenesis, Histopathology and Ultrastructural Pathology.

I confirm that I have read this submission and believe that I have an appropriate level of expertise to confirm that it is of an acceptable scientific standard.

Reviewer Report 26 July 2024

<https://doi.org/10.5256/f1000research.145453.r181616>

© 2024 Wihadmadyatami H. This is an open access peer review report distributed under the terms of the [Creative Commons Attribution License](#), which permits unrestricted use, distribution, and reproduction in any medium, provided the original work is properly cited.



Hevi Wihadmadyatami 

¹ Department of Anatomy, Faculty of Veterinary Medicine, Universitas Gadjah Mada, Yogyakarta, Indonesia

² Department of Anatomy, Faculty of Veterinary Medicine, Universitas Gadjah Mada, Yogyakarta, Indonesia

Introduction: Please make a stronger background on the importance of the detection of the cancer biomarker or proteomics analysis on the rat model.

Material and method: Please complete all the data of the reagent which is used on the experiment.

Results: Please provide a more clean version on the part of molecular weight of figure 1, so the

reader can read clearly the molecular weight of each protein which is expressed on the mammary tissue gland.

Is the work clearly and accurately presented and does it cite the current literature?

Yes

Is the study design appropriate and is the work technically sound?

Yes

Are sufficient details of methods and analysis provided to allow replication by others?

Yes

If applicable, is the statistical analysis and its interpretation appropriate?

Yes

Are all the source data underlying the results available to ensure full reproducibility?

Yes

Are the conclusions drawn adequately supported by the results?

Yes

Competing Interests: No competing interests were disclosed.

Reviewer Expertise: Cell biology, cancer mechanism, neurodegeneration, histology

I confirm that I have read this submission and believe that I have an appropriate level of expertise to confirm that it is of an acceptable scientific standard.

Author Response 29 Jul 2024

Dyah Ayu Pratama

Dear Reviewer,

I appreciate and am thankful for your positive comments and suggestions.

As your suggestion on introduction section, I have highlight the importance of this research especially related with proteomic analysis of cancer biomarkers on cancer detection and prediction, as well in the development of cancer therapy.

I have also complete the data of reagent which is used in this research.

Competing Interests: No competing interests were disclosed.

Reviewer Report 26 July 2024

<https://doi.org/10.5256/f1000research.145453.r181612>

© 2024 Luqman Nordin M. This is an open access peer review report distributed under the terms of the [Creative Commons Attribution License](#), which permits unrestricted use, distribution, and reproduction in any medium, provided the original work is properly cited.



Muhammad Luqman Nordin 

¹ Department of Veterinary Clinical Studies, Faculty of Veterinary Medicine, Universiti Malaysia Kelantan, Kota Bharu, Malaysia

² Department of Veterinary Clinical Studies, Faculty of Veterinary Medicine, Universiti Malaysia Kelantan, Kota Bharu, Malaysia

Overall, this article is good and contributes to the novelty and very valuable knowledge especially with regards to mammary carcinoma in animals. As the prevalence of cancer is increasing among animals, this study provides a high level of academic and scientific writing.

Minor comment: it would be better if you can provide a picture of mammary cancer development on rats. The mammary cancer results from the uncontrolled growth of cells in the mammary glands, the glandular ducts extending from the lobule to the nipple, and the surrounding connective tissue. Normally, there will be masses present at the nipple/mammary area.

Is the work clearly and accurately presented and does it cite the current literature?

Yes

Is the study design appropriate and is the work technically sound?

Yes

Are sufficient details of methods and analysis provided to allow replication by others?

Yes

If applicable, is the statistical analysis and its interpretation appropriate?

Yes

Are all the source data underlying the results available to ensure full reproducibility?

Yes

Are the conclusions drawn adequately supported by the results?

Yes

Competing Interests: No competing interests were disclosed.

Reviewer Expertise: veterinary oncology, pharmacology, toxicology and pharmaceuticals (vaccine and drugs delivery technology).

I confirm that I have read this submission and believe that I have an appropriate level of expertise to confirm that it is of an acceptable scientific standard.

Author Response 29 Jul 2024

Dyah Ayu Pratama

Dear Reviewer,

Thank you very much for your positive comments and suggestions. Related with your suggestion to provide a description of mammary cancer development on rats, I have supplemented with an explanation of the development of mammary cancer in rats as a result of DMBA induction.

Competing Interests: No competing interests were disclosed.

The benefits of publishing with F1000Research:

- Your article is published within days, with no editorial bias
- You can publish traditional articles, null/negative results, case reports, data notes and more
- The peer review process is transparent and collaborative
- Your article is indexed in PubMed after passing peer review
- Dedicated customer support at every stage

For pre-submission enquiries, contact research@f1000.com

F1000Research