


CORRECTION

Open Access



# Correction: HDGFL2 cryptic proteins report presence of TDP-43 pathology in neurodegenerative diseases

Anna Calliari<sup>1†</sup>, Lillian M. Daugherty<sup>1†</sup>, Ellen A. Albagli<sup>1</sup>, Paula Castellanos Otero<sup>1</sup>, Mei Yue<sup>1</sup>, Karen Jansen-West<sup>1</sup>, Naeyma N. Islam<sup>1</sup>, Thomas Caulfield<sup>1</sup>, Bailey Rawlinson<sup>1</sup>, Michael DeTure<sup>1,2</sup>, Casey Cook<sup>1,2</sup>, Neill R. Graff-Radford<sup>3</sup>, Gregory S. Day<sup>3</sup>, Bradley F. Boeve<sup>4</sup>, David S. Knopman<sup>4</sup>, Ronald C. Petersen<sup>4</sup>, Keith A. Josephs<sup>4</sup>, Björn Oskarsson<sup>3</sup>, Aaron D. Gitler<sup>5</sup>, Dennis W. Dickson<sup>1,2</sup>, Tania F. Gendron<sup>1,2</sup>, Mercedes Prudencio<sup>1,2</sup>, Michael E. Ward<sup>6,7\*</sup>, Yong-Jie Zhang<sup>1,2\*</sup> and Leonard Petrucelli<sup>1,2\*</sup> 

**Correction: *Molecular Neurodegeneration* (2024) 19:29**  
<https://doi.org/10.1186/s13024-024-00718-8>

The original article contains an error in Figure 1A.

The corrected figure amends the statistical significance annotation of ‘ns’ to ‘\*’ and can be viewed ahead.

---

<sup>†</sup> Anna Calliari and Lillian M. Daugherty contributed equally to this work.

The online version of the original article can be found at <https://doi.org/10.1186/s13024-024-00718-8>.

\*Correspondence:

Michael E. Ward  
wardme@nih.gov

Yong-Jie Zhang  
zhang.yongjie@mayo.edu

Leonard Petrucelli  
petrucelli.leonard@mayo.edu

<sup>1</sup>Department of Neuroscience, Mayo Clinic, Jacksonville, FL, USA

<sup>2</sup>Neurobiology of Disease Graduate Program, Mayo Graduate School, Mayo Clinic College of Medicine, Rochester, MN, USA

<sup>3</sup>Department of Neurology, Mayo Clinic, Jacksonville, FL, USA

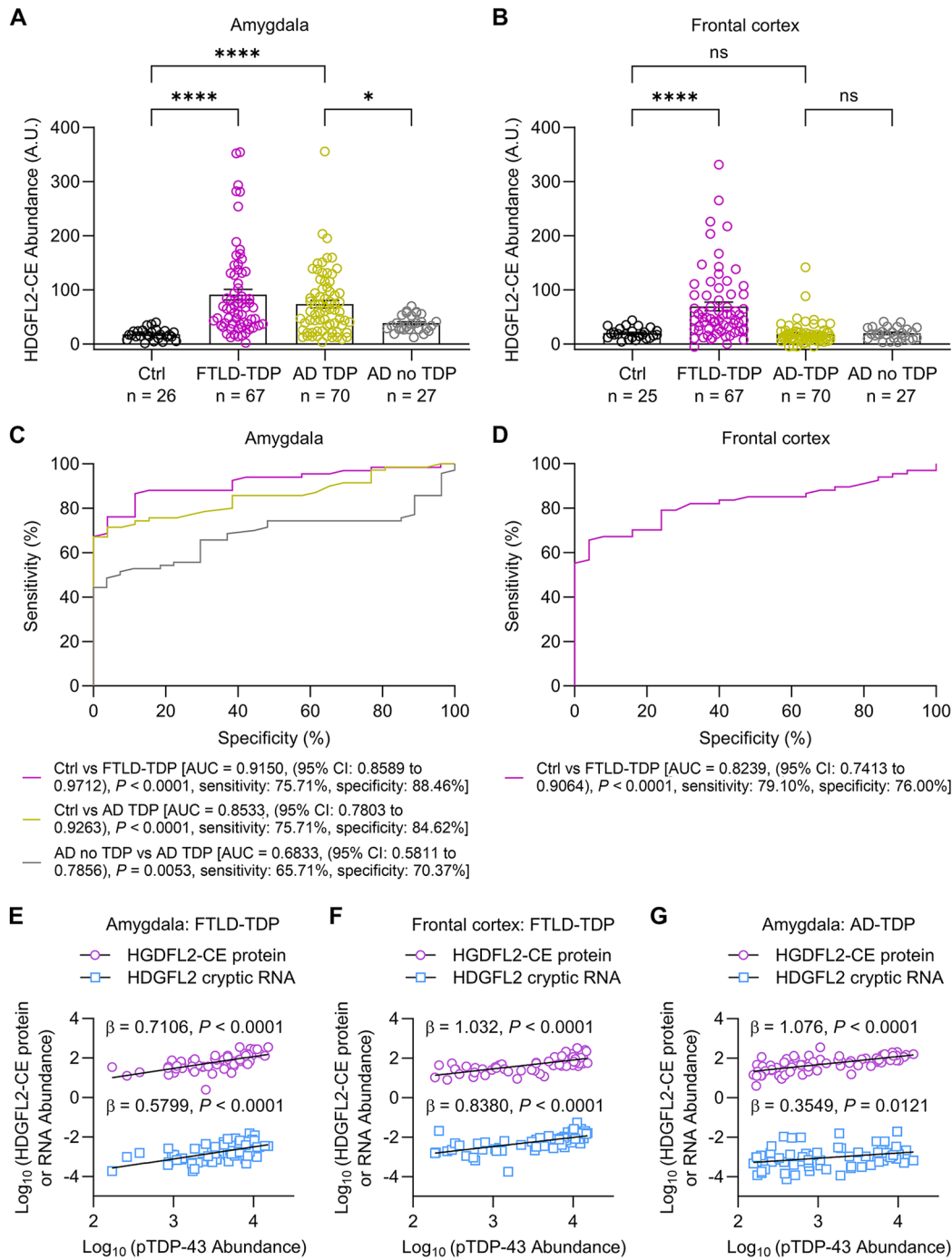
<sup>4</sup>Department of Neurology, Mayo Clinic, Rochester, MN, USA

<sup>5</sup>Department of Genetics, Stanford University School of Medicine, Stanford, CA, USA

<sup>6</sup>National Institute of Neurological Disorders and Stroke, National Institutes of Health, Bethesda, MD, USA

<sup>7</sup>Center for Alzheimer’s and Related Dementias, National Institute on Aging and National Institute of Neurological Disorders and Stroke, National Institutes of Health, Bethesda, MD, USA





Published online: 27 July 2024

**Publisher's Note**

Springer Nature remains neutral with regard to jurisdictional claims in published maps and institutional affiliations.